

## Creocean South Africa EBS N2 - February

Latitude: 31.29 S Longitude: 13.95 E

### Weather Days

Wave Height > 6.0 ft Mean: 22.3 days Range: 20.3 - 24.2 days p50:27.5 days p75:26 days p90:25 days

Wave Height > 7.0 ft Mean: 17.5 days Range: 14.7 - 20.3 days p50:25 days p75:22.5 days p90:21 days

Wave Height > 8.0 ft Mean: 12.6 days Range: 9.4 - 15.7 days p50:20.5 days p75:17.5 days p90:16 days

Wind Speed > 10.0 knots Mean: 24.7 days Range: 22.7 - 26.8 days p50:25.5 days p75:23.5 days p90:22.5 days

Wind Speed > 15.0 knots Mean: 16.2 days Range: 13.0 - 19.4 days p50:17 days p75:14.5 days p90:12 days

Wind Speed > 20.0 knots Mean: 6.6 days Range: 4.1 - 9.1 days p50:6 days p75:5 days p90:4 days

### Working Window

Wave Height < 6.0 ft  
A 1 day or longer window will statistically occur 1.1 times per month  
A 2 day or longer window will statistically occur 0.3 times per month  
A 3 day or longer window will statistically occur 0.0 times per month

Wave Height < 7.0 ft  
A 1 day or longer window will statistically occur 1.9 times per month  
A 2 day or longer window will statistically occur 0.7 times per month  
A 3 day or longer window will statistically occur 0.3 times per month

Wave Height < 8.0 ft  
A 1 day or longer window will statistically occur 3.5 times per month  
A 2 day or longer window will statistically occur 1.5 times per month  
A 3 day or longer window will statistically occur 0.8 times per month

### Waves

Mean Height: 8 - 10 ft

The wave heights will occasionally reach 16 - 18 ft, but rarely higher.

Mean Period: 10 - 12 sec

The wave periods will occasionally reach 18 - 20 sec, but rarely longer.

Principle Direction, from: SW

WindSea/Swell: 12% / 88%

### Winds

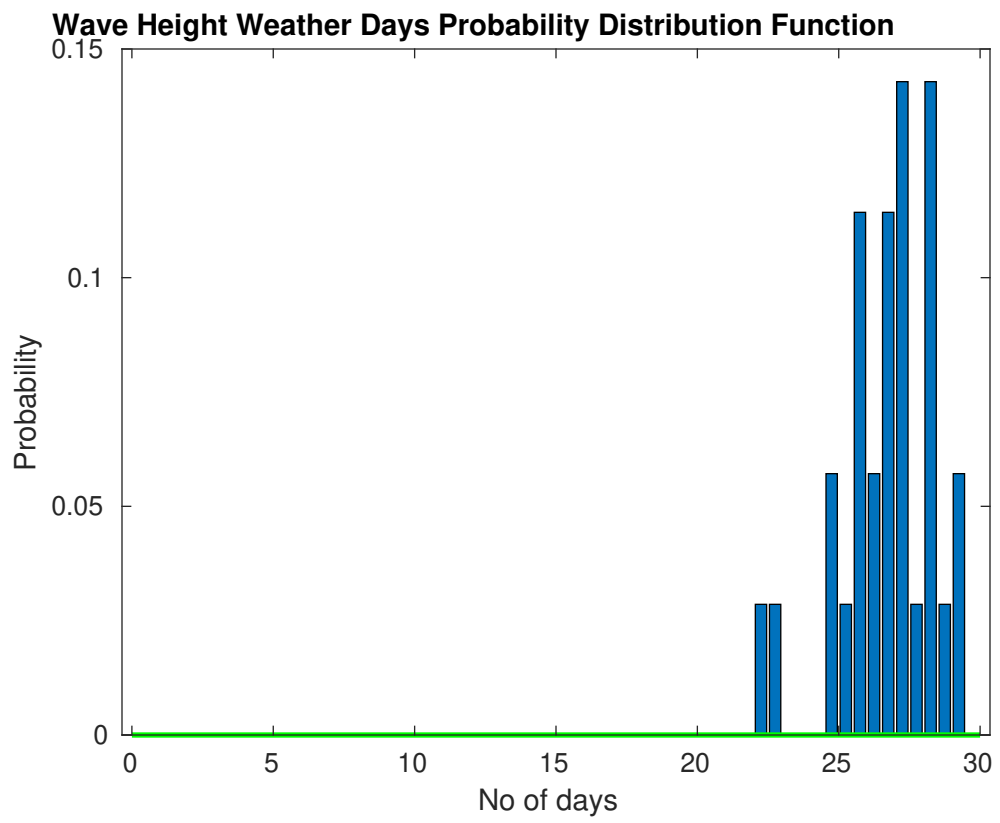
Mean Speed: 15 - 20 kts

The winds will occasionally reach 25 - 30 kts, but rarely greater.

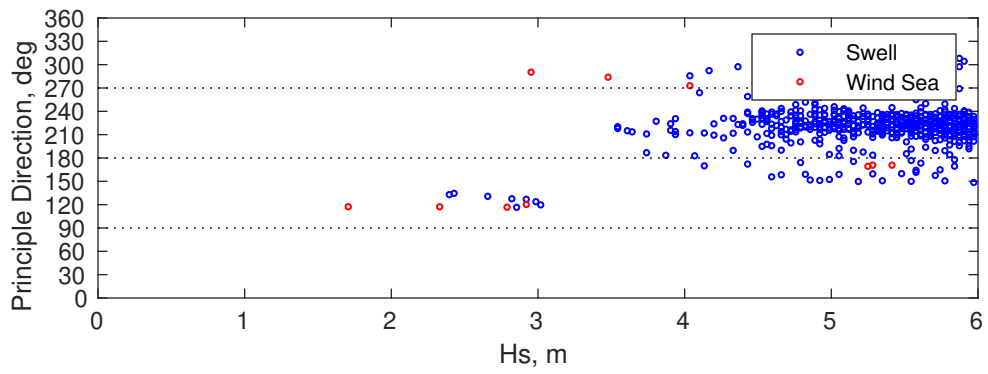
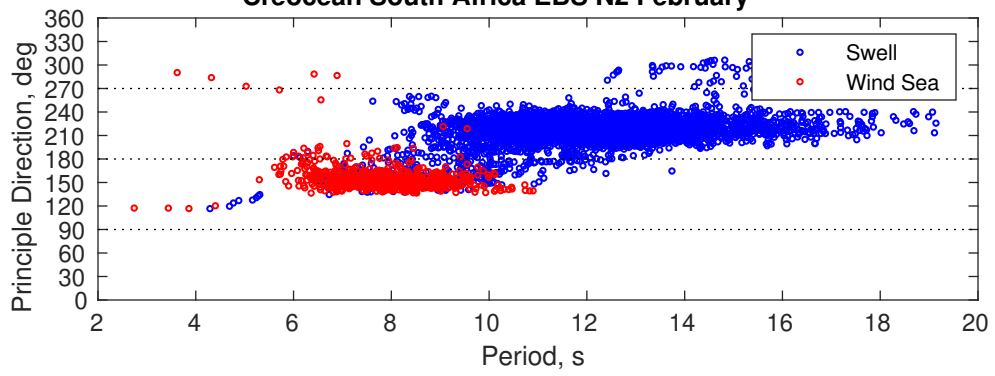
Principle Direction, from: SSE

### Severe Storms

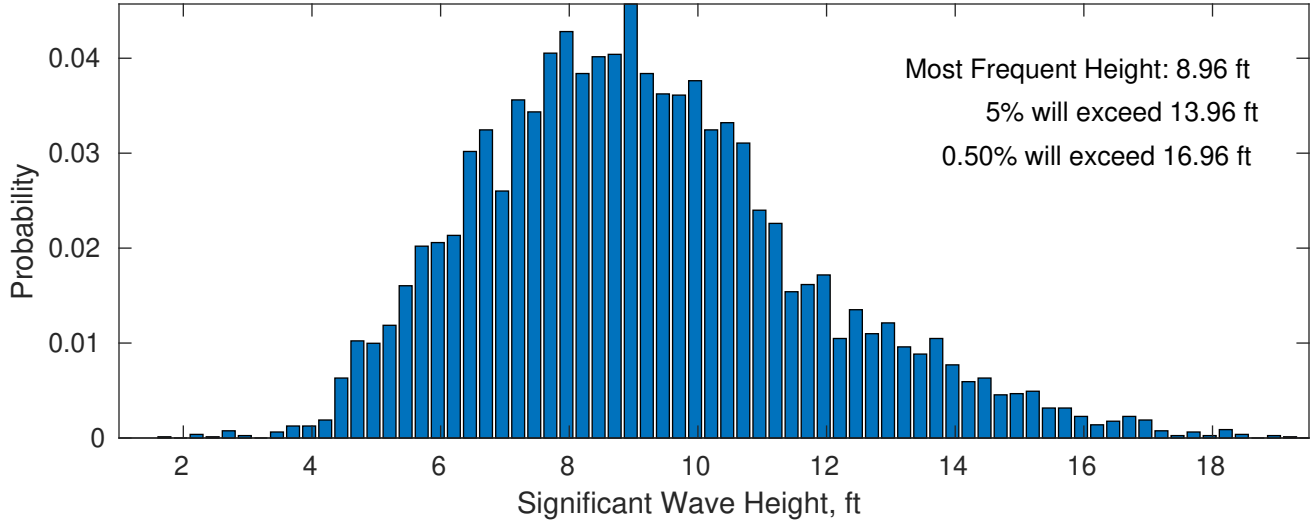
Severe storms with gale force winds and extreme waves are not expected during this month.



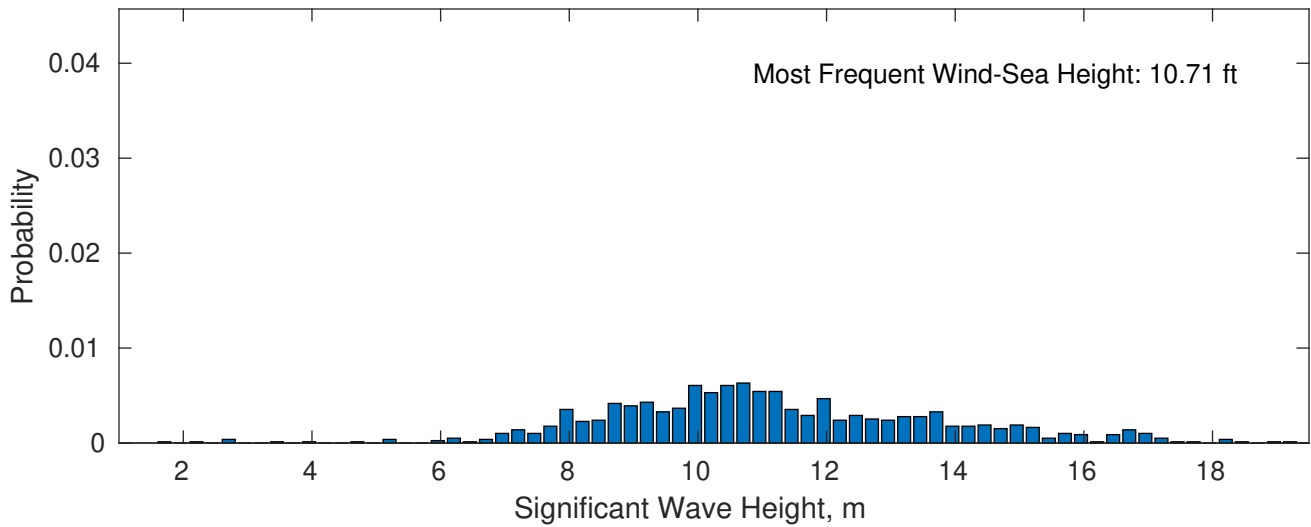
**Creocean South Africa EBS N2 February**



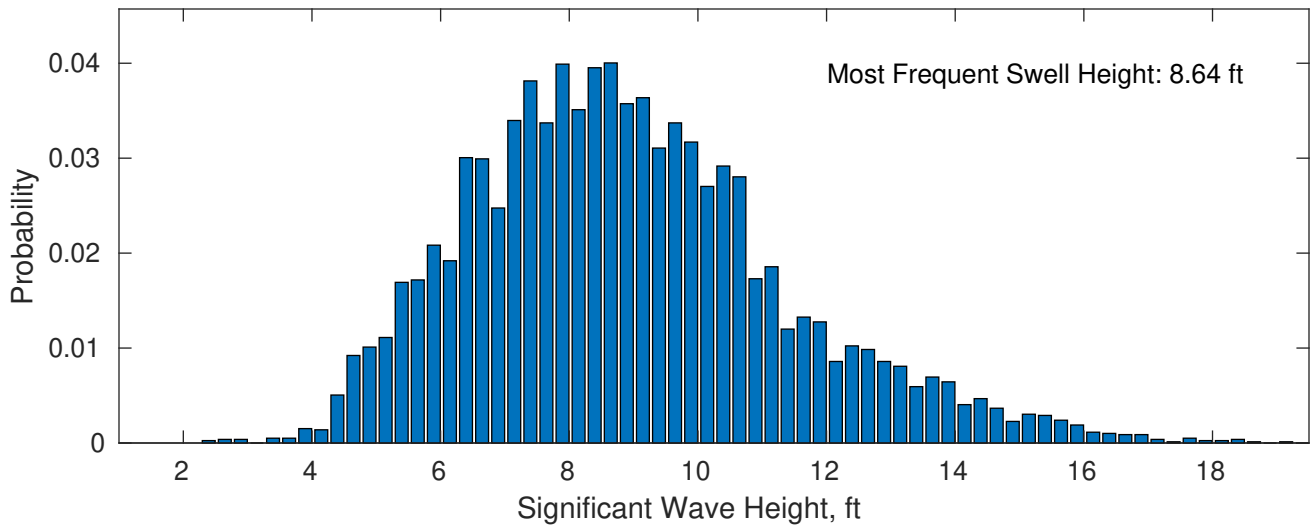
**February Wave Height PDF: 1979 - 2015**



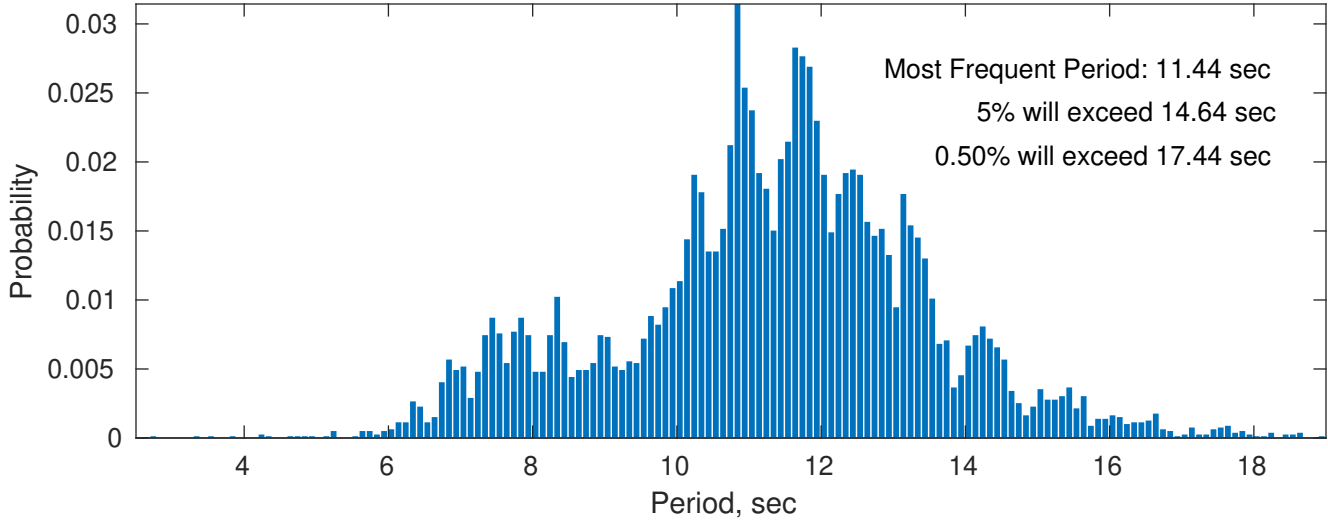
**Wind-Sea: 11.81%**



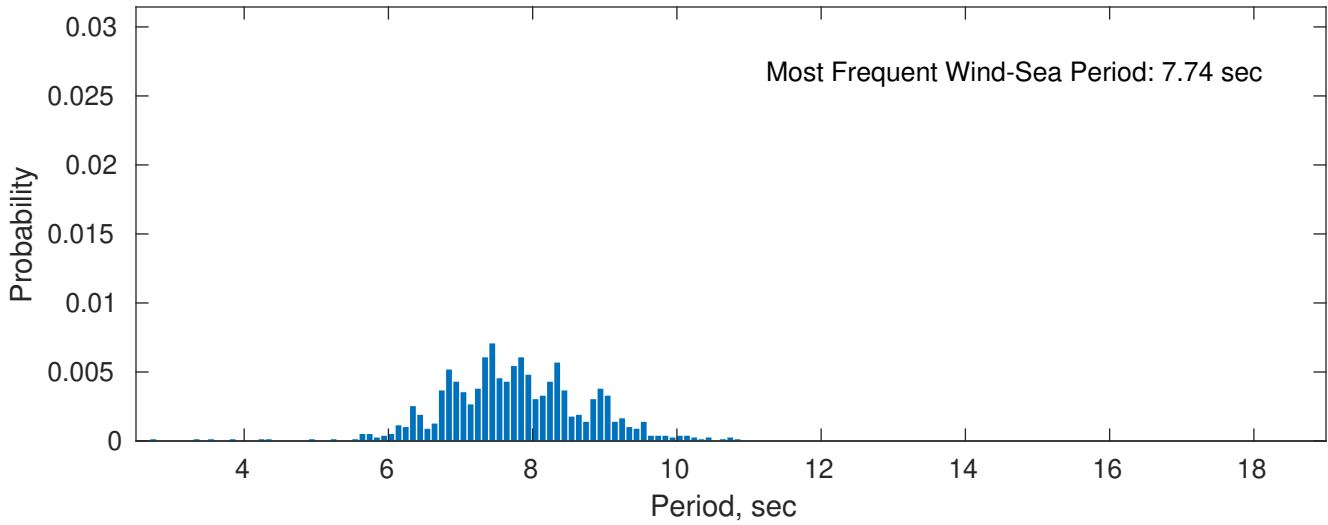
**Swell: 88.19%**



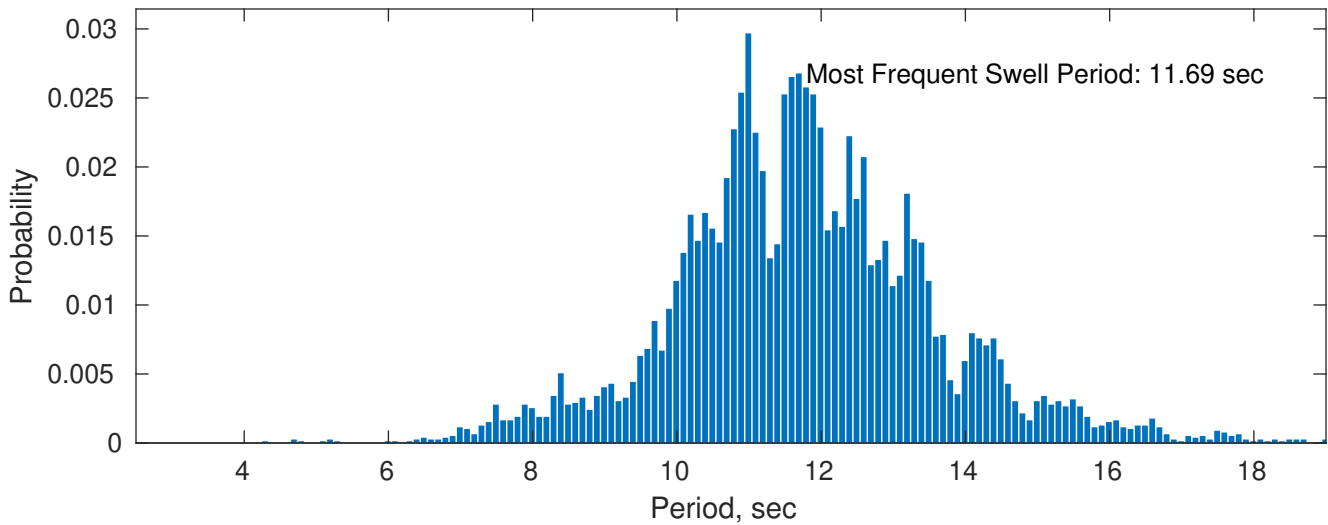
### February Peak Wave Period PDF: 1979 - 2015



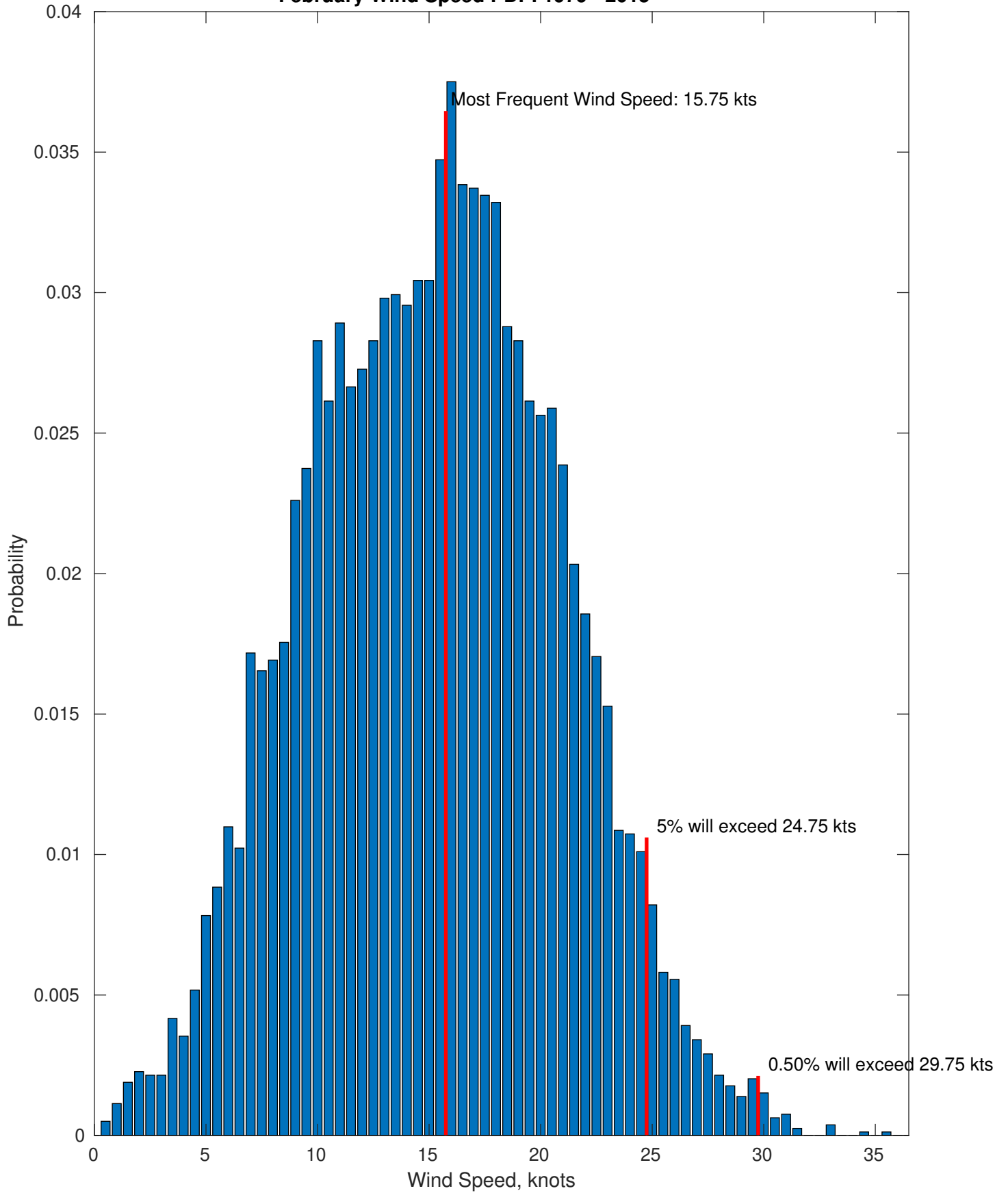
### Wind-Sea: 11.81%



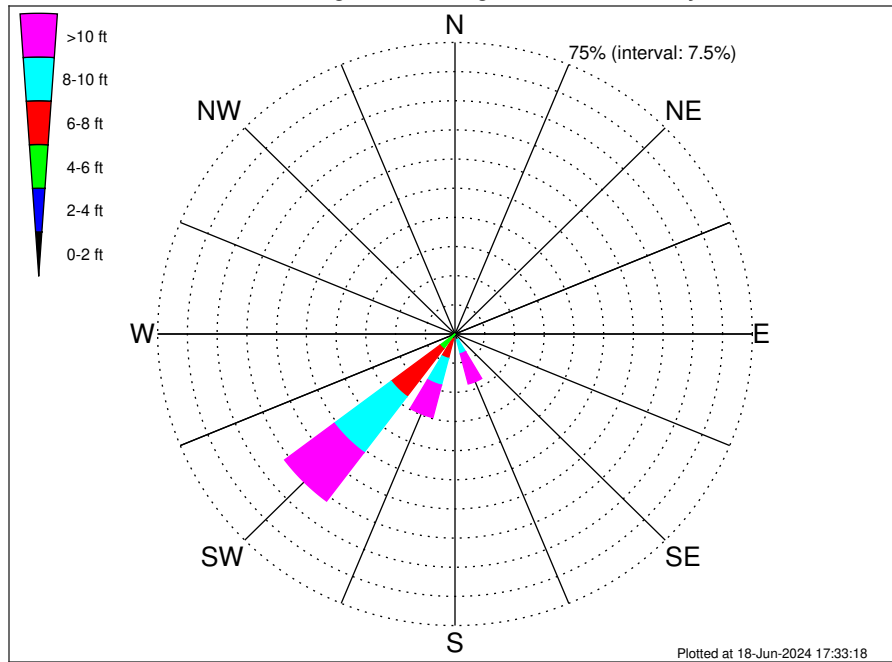
### Swell: 88.19%



February Wind Speed PDF: 1979 - 2015



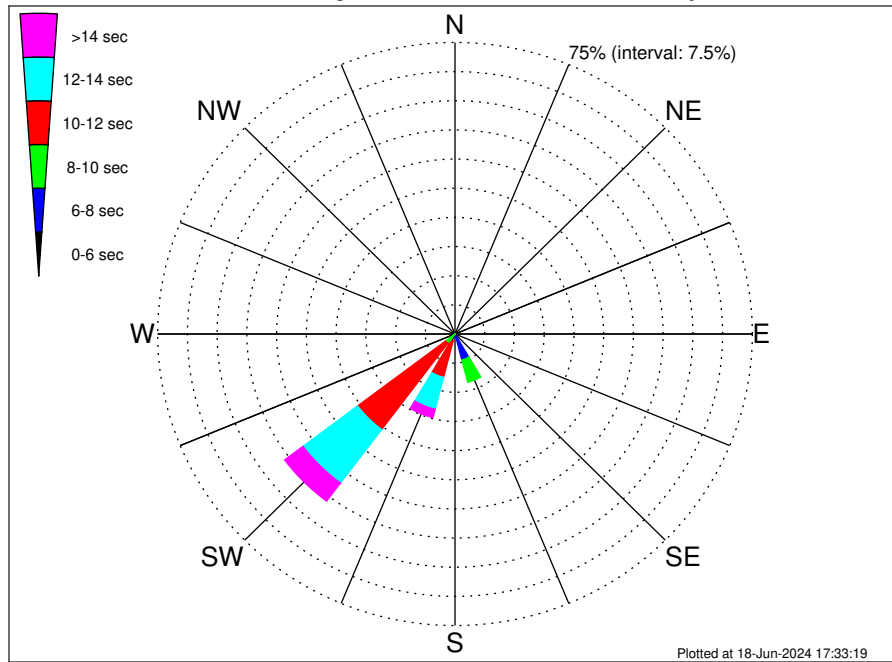
**Creocean South Africa EBS N2 Climatological WaveHeight Rose for February: 1979 - 2015**



**Joint Frequency Distribution Table**

	N	NNE	NE	ENE	E	ESE	SE	SSE	S	SSW	SW	WSW	W	WNW	NW	NNW	Total
calm	•	•	•	•	•	•	•	•	•	•	•	•	•	•	•	•	•
1 - 2 ft	•	•	•	•	•	0.01	•	•	•	•	•	•	•	•	•	•	0.01
2 - 4 ft	•	•	•	•	•	0.06	0.08	•	0.03	0.05	0.10	•	•	0.03	•	•	0.34
4 - 6 ft	•	•	•	•	•	•	•	0.24	0.29	1.34	4.66	0.81	0.15	0.21	0.28	•	7.98
6 - 8 ft	•	•	•	•	•	•	0.18	1.36	0.80	5.11	15.42	1.10	0.05	0.23	0.14	•	24.38
8 - 10 ft	•	•	•	•	•	•	0.86	3.66	0.91	7.11	17.99	1.19	0.06	0.06	0.03	•	31.87
10 - 12 ft	•	•	•	•	•	•	0.82	4.42	0.54	5.28	9.52	0.37	•	•	•	•	20.95
12 - 14 ft	•	•	•	•	•	•	0.38	2.26	0.18	2.30	3.93	0.16	•	•	•	•	9.21
14 - 16 ft	•	•	•	•	•	•	0.33	0.95	0.09	0.82	1.76	0.05	•	•	•	•	3.99
16 - 18 ft	•	•	•	•	•	•	0.10	0.37	0.01	0.15	0.43	•	•	•	•	•	1.06
> 18 ft	•	•	•	•	•	•	0.06	0.03	•	0.06	0.01	0.04	•	•	•	•	0.20
Total	•	•	•	•	•	0.08	2.80	13.28	2.84	22.23	53.82	3.71	0.27	0.53	0.44	•	100.00

**Creocean South Africa EBS N2 Climatological WavePeriod Rose for February: 1979 - 2015**

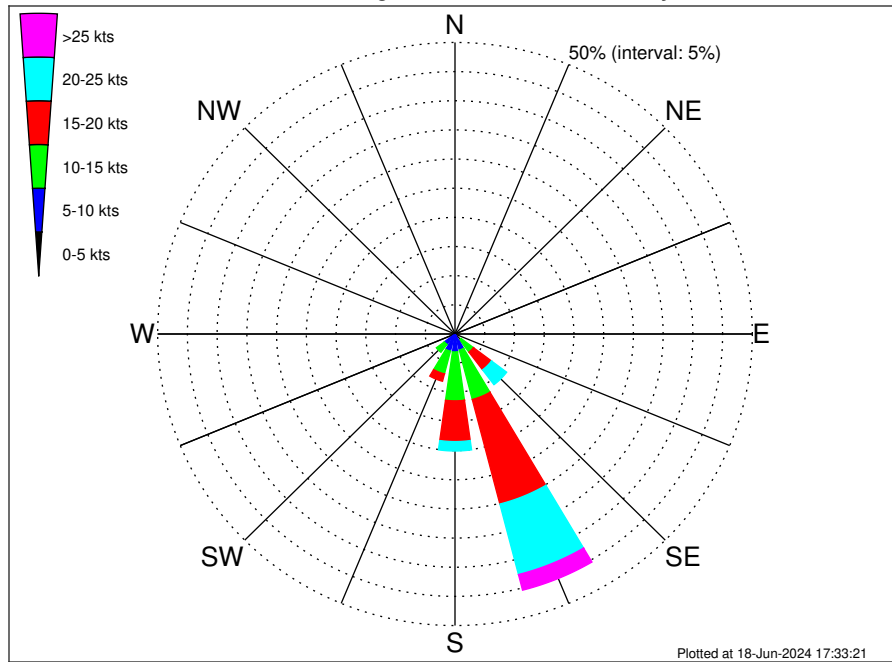


**Joint Frequency Distribution Table**

	N	NNE	NE	ENE	E	ESE	SE	SSE	S	SSW	SW	WSW	W	WNW	NW	NNW	Total
calm	•	•	•	•	•	•	•	•	•	•	•	•	•	•	•	•	•
1 - 2 sec	•	•	•	•	•	•	•	•	•	•	•	•	•	•	•	•	•
2 - 4 sec	•	•	•	•	•	0.04	•	•	•	•	•	•	•	0.01	•	•	0.05
4 - 6 sec	•	•	•	•	•	0.04	0.09	0.08	0.10	•	•	•	0.03	0.01	•	•	0.34
6 - 8 sec	•	•	•	•	•	•	1.28	6.82	0.57	0.10	•	0.03	•	0.03	•	•	8.81
8 - 10 sec	•	•	•	•	•	•	1.30	5.92	0.91	1.77	2.99	0.37	0.05	•	•	•	13.31
10 - 12 sec	•	•	•	•	•	•	0.14	0.43	1.04	9.65	27.77	1.44	•	•	•	•	40.46
12 - 14 sec	•	•	•	•	•	•	•	0.04	0.23	8.50	17.26	1.15	0.04	0.18	•	•	27.39
14 - 16 sec	•	•	•	•	•	•	•	•	•	1.81	4.89	0.49	0.15	0.27	0.18	•	7.78
18 - 20 sec	•	•	•	•	•	•	•	•	•	0.38	0.81	0.19	•	0.04	0.21	•	1.63
22 - 24 sec	•	•	•	•	•	•	•	•	•	0.03	0.10	0.05	•	•	0.05	•	0.23
Total	•	•	•	•	•	0.08	2.80	13.28	2.84	22.23	53.82	3.71	0.27	0.53	0.44	•	100.00



**Creocean South Africa EBS N2 Climatological Wind Rose for February: 1979 - 2015**



**Joint Frequency Distribution Table**

	N	NNE	NE	ENE	E	ESE	SE	SSE	S	SSW	SW	WSW	W	WNW	NW	NNW	Total
calm	•	•	•	•	0.01	0.01	•	•	0.01	•	•	•	0.01	•	•	•	0.05
0 - 5 kts	0.05	0.04	0.05	0.05	0.09	0.10	0.19	0.23	0.20	0.25	0.34	0.25	0.15	0.14	0.06	0.05	2.25
5 - 10 kts	0.03	0.04	•	0.04	0.08	0.24	1.09	2.63	2.87	2.80	1.91	1.22	1.15	0.59	0.38	0.19	15.24
10 - 15 kts	0.03	0.03	0.01	0.01	0.05	0.20	2.61	8.74	8.38	4.02	1.68	0.98	0.76	0.72	0.24	0.06	28.53
15 - 20 kts	•	•	•	•	•	0.13	3.80	18.53	6.98	1.30	0.39	0.29	0.18	0.18	0.23	0.01	32.01
20 - 25 kts	•	•	•	•	•	0.06	3.19	12.49	1.62	0.19	0.05	0.03	0.04	0.08	0.08	0.01	17.83
25 - 30 kts	•	•	•	•	•	0.04	1.12	2.49	0.06	•	•	•	•	•	•	•	3.71
30 - 35 kts	•	•	•	•	•	•	0.09	0.28	•	•	•	•	•	•	•	•	0.37
35 - 40 kts	•	•	•	•	•	•	•	0.01	•	•	•	•	•	•	•	•	0.01
40 - 45 kts	•	•	•	•	•	•	•	•	•	•	•	•	•	•	•	•	•
45 - 50 kts	•	•	•	•	•	•	•	•	•	•	•	•	•	•	•	•	•
Total	0.10	0.10	0.06	0.10	0.23	0.78	12.10	45.38	20.13	8.56	4.37	2.78	2.29	1.70	0.98	0.33	100.00