

Creocean South Africa EBS N2 - March

Latitude: 31.29 S Longitude: 13.95 E

Weather Days

Wave Height > 6.0 ft Mean: 20.6 days Range: 18.7 - 22.5 days p50:27 days p75:25.5 days p90:25 days

Wave Height > 7.0 ft Mean: 16.1 days Range: 13.5 - 18.7 days p50:24 days p75:22 days p90:20.5 days

Wave Height > 8.0 ft Mean: 12.1 days Range: 8.9 - 15.3 days p50:19 days p75:17 days p90:15.5 days

Wind Speed > 10.0 knots Mean: 24.2 days Range: 21.3 - 27.2 days p50:25 days p75:22.5 days p90:21.5 days

Wind Speed > 15.0 knots Mean: 15.5 days Range: 12.4 - 18.6 days p50:15.5 days p75:14 days p90:12.5 days

Wind Speed > 20.0 knots Mean: 6.6 days Range: 4.2 - 9.0 days p50:6.5 days p75:5.5 days p90:4 days

Working Window

Wave Height < 6.0 ft
A 1 day or longer window will statistically occur 1.3 times per month
A 2 day or longer window will statistically occur 0.5 times per month
A 3 day or longer window will statistically occur 0.2 times per month

Wave Height < 7.0 ft
A 1 day or longer window will statistically occur 2.5 times per month
A 2 day or longer window will statistically occur 1.2 times per month
A 3 day or longer window will statistically occur 0.5 times per month

Wave Height < 8.0 ft
A 1 day or longer window will statistically occur 3.6 times per month
A 2 day or longer window will statistically occur 2.4 times per month
A 3 day or longer window will statistically occur 1.2 times per month

Waves

Mean Height: 8 - 10 ft

The wave heights will occasionally reach > 18 ft, but rarely higher.

Mean Period: 10 - 12 sec

The wave periods will occasionally reach 18 - 20 sec, but rarely longer.

Principle Direction, from: SW

WindSea/Swell: 10% / 90%

Winds

Mean Speed: 15 - 20 kts

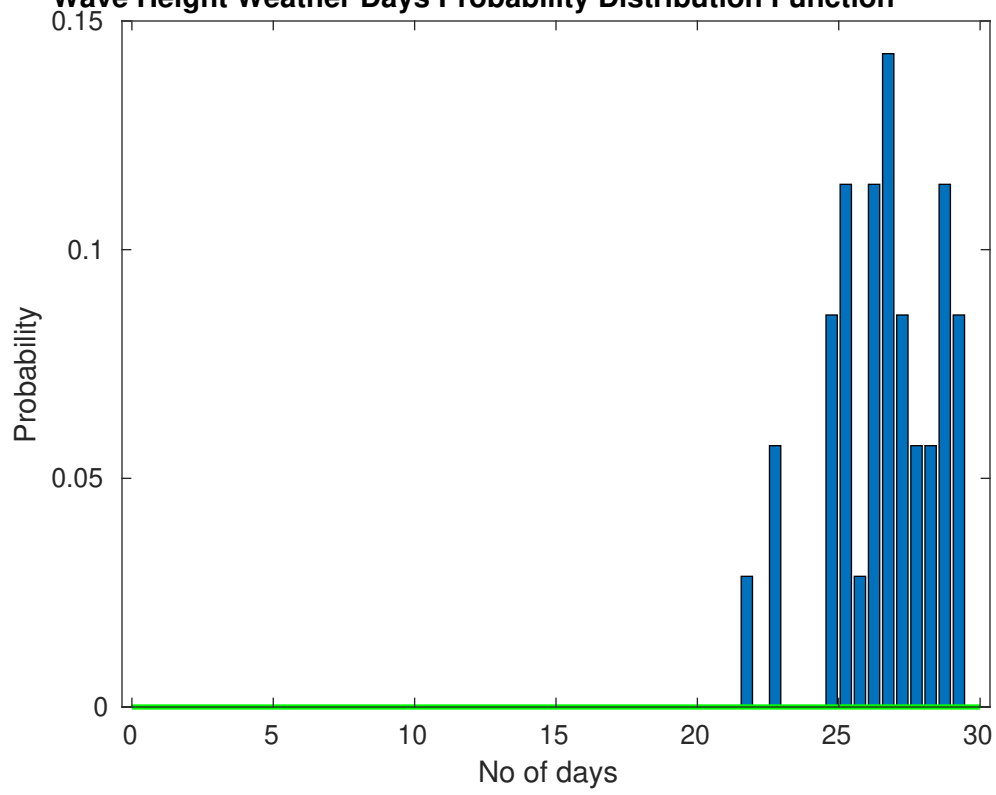
The winds will occasionally reach 25 - 30 kts, but rarely greater.

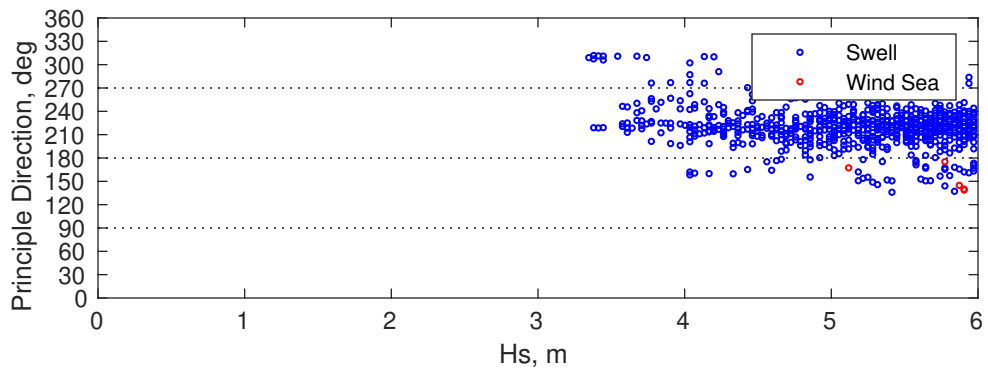
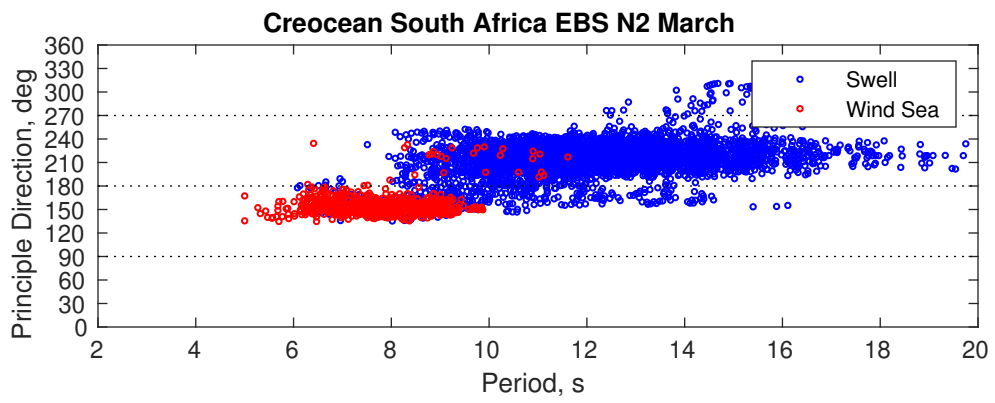
Principle Direction, from: SSE

Severe Storms

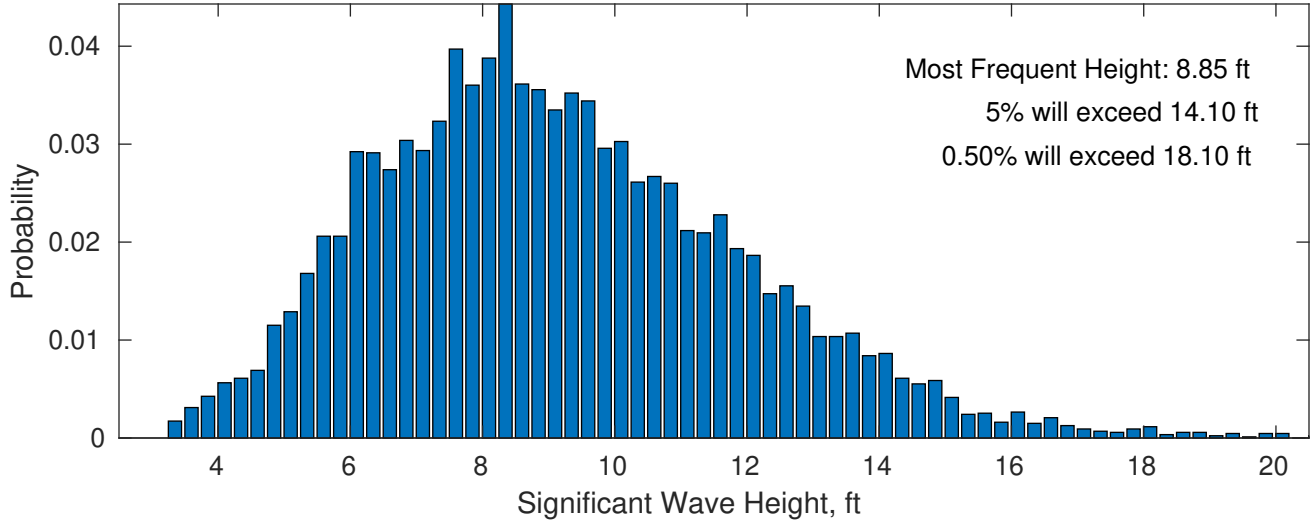
Severe storms with gale force winds and extreme waves are not expected during this month.

Wave Height Weather Days Probability Distribution Function

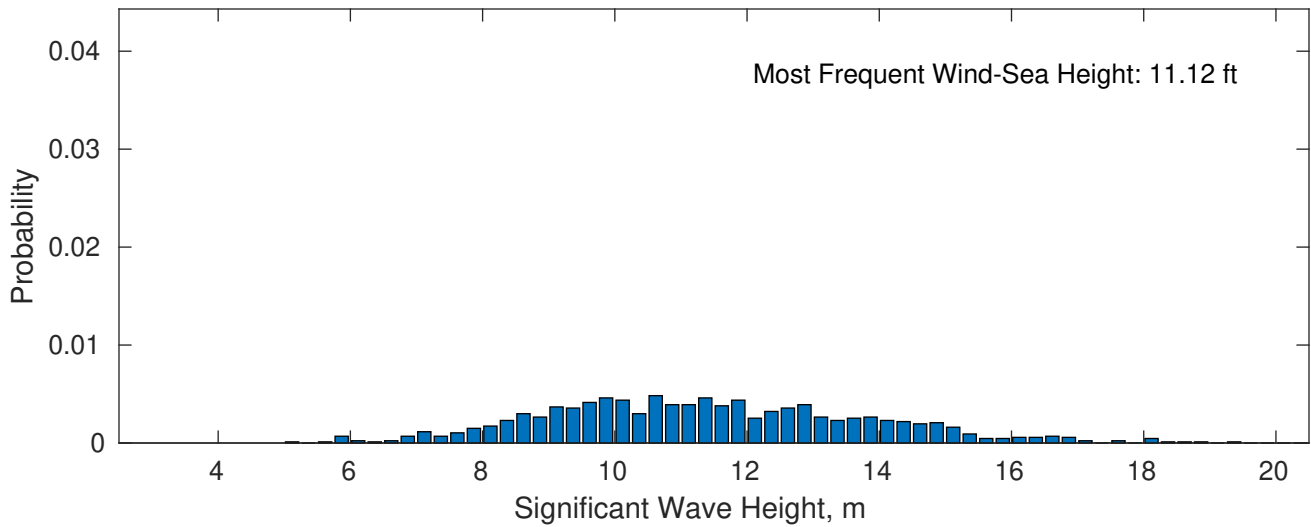




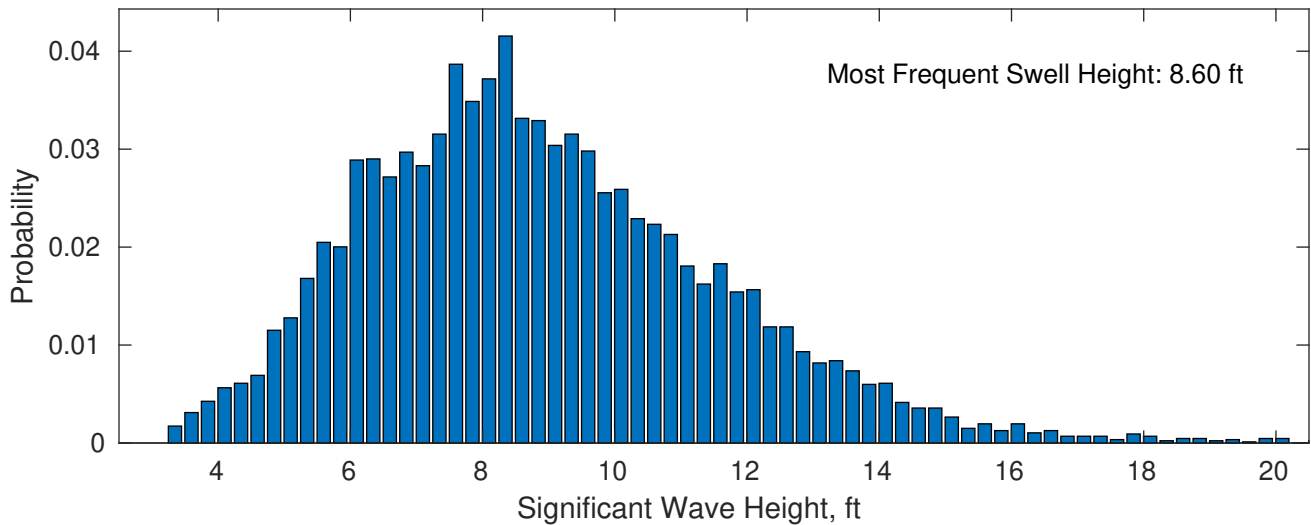
March Wave Height PDF: 1979 - 2015



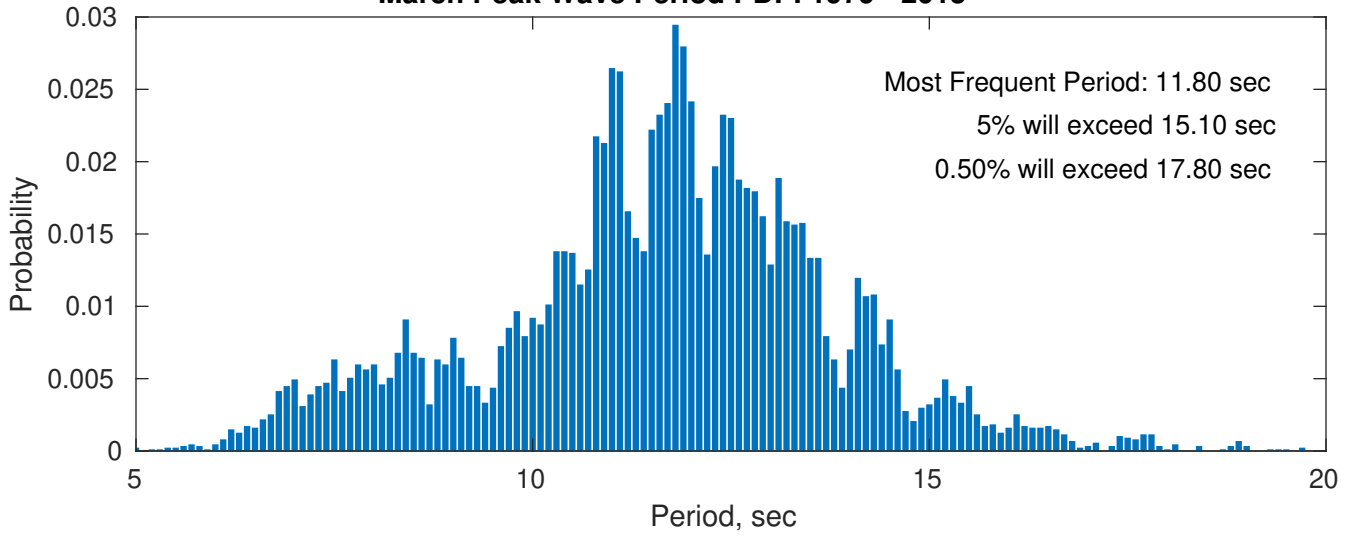
Wind-Sea: 10.42%



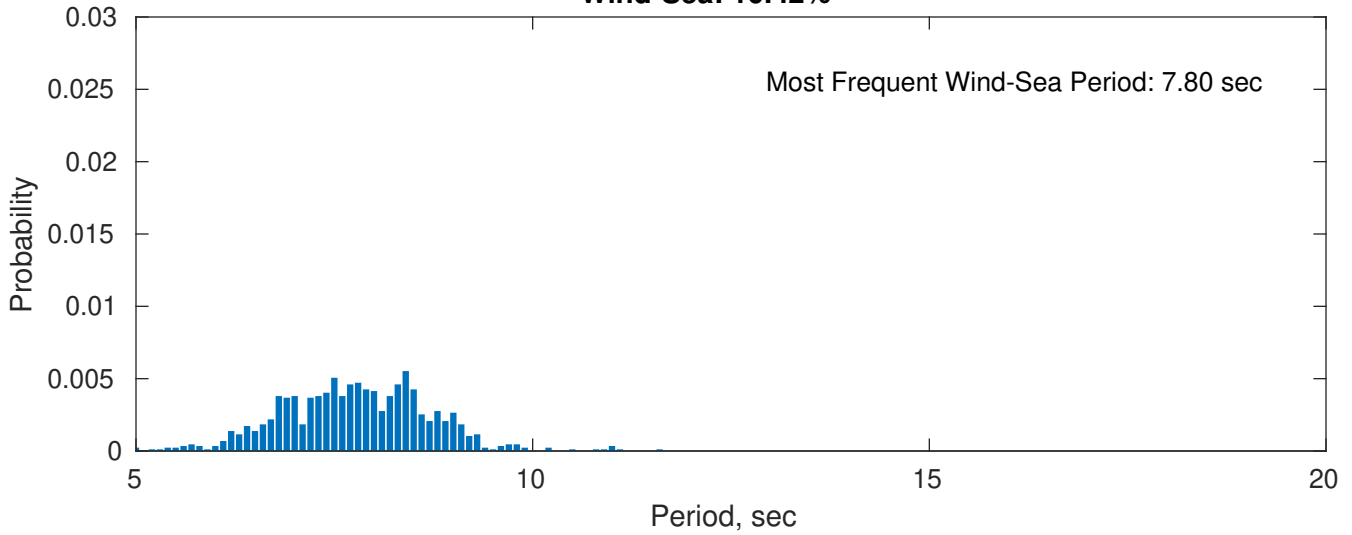
Swell: 89.58%



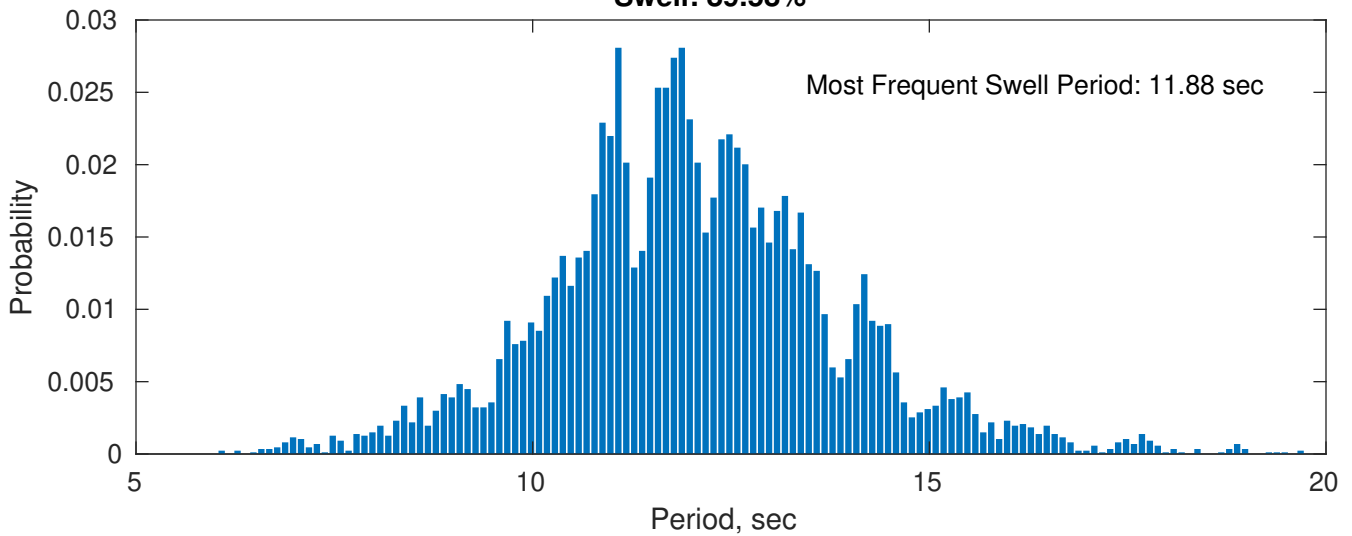
March Peak Wave Period PDF: 1979 - 2015



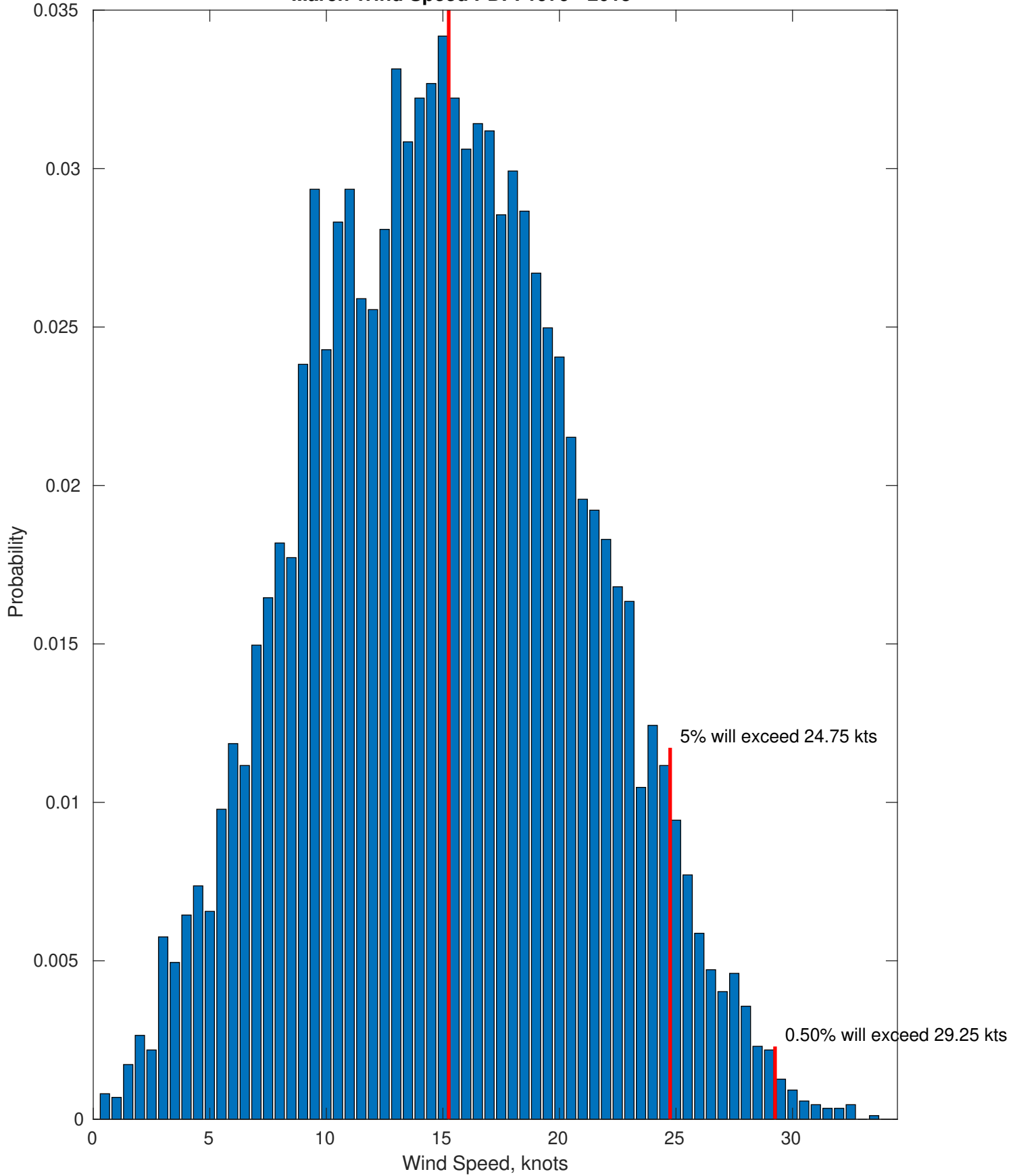
Wind-Sea: 10.42%



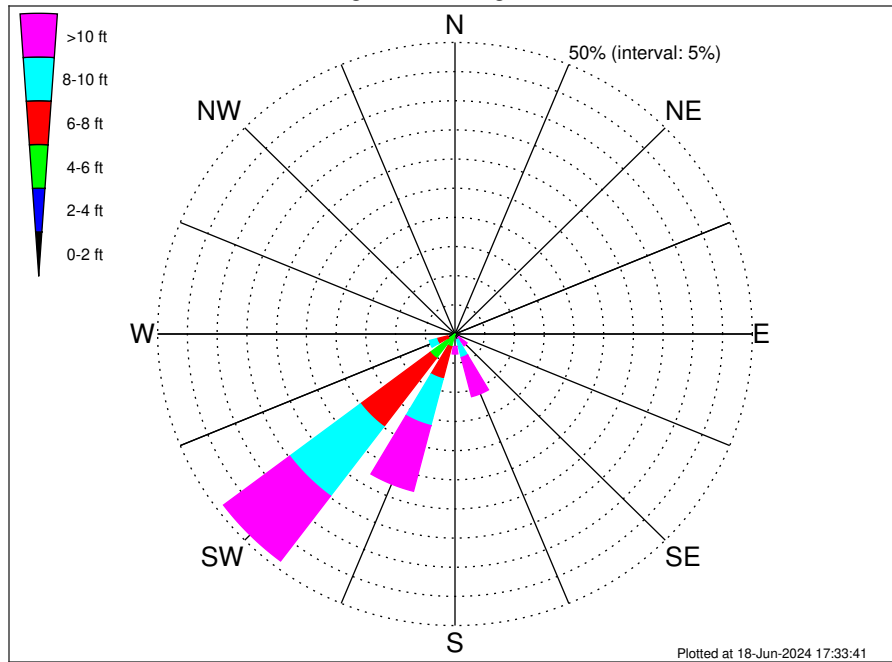
Swell: 89.58%



Most Frequent Wind Speed: 15.25 kts
March Wind Speed PDF: 1979 - 2015



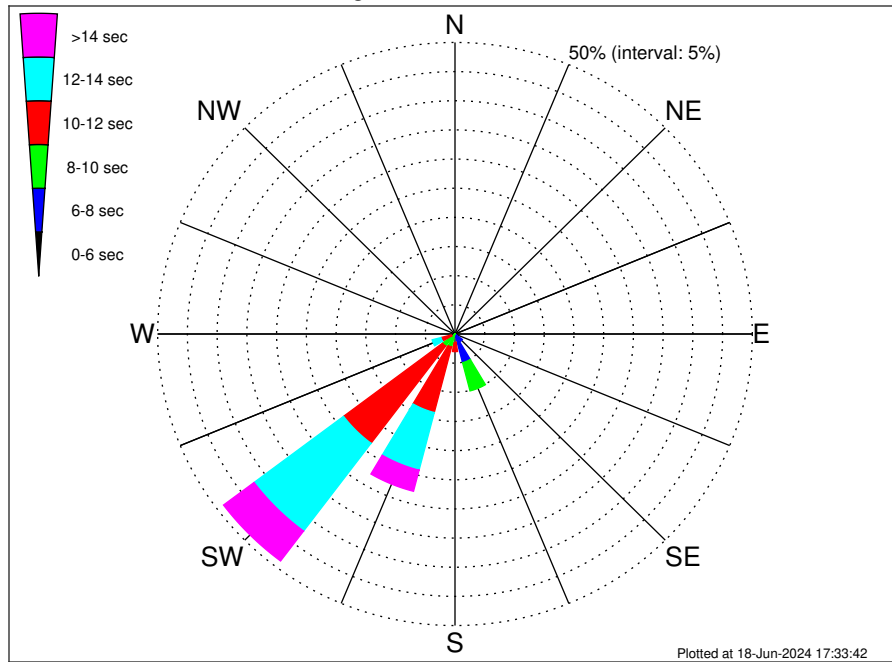
Creocean South Africa EBS N2 Climatological WaveHeight Rose for March: 1979 - 2015



Joint Frequency Distribution Table

	N	NNE	NE	ENE	E	ESE	SE	SSE	S	SSW	SW	WSW	W	WNW	NW	NNW	Total
calm	•	•	•	•	•	•	•	•	•	•	•	•	•	•	•	•	•
1 - 2 ft	•	•	•	•	•	•	•	•	•	•	•	•	•	•	•	•	•
2 - 4 ft	•	•	•	•	•	•	•	•	•	0.06	0.24	0.17	0.02	•	0.12	•	0.61
4 - 6 ft	•	•	•	•	•	•	0.08	0.37	0.39	2.20	4.98	1.09	0.20	0.14	0.14	•	9.59
6 - 8 ft	•	•	•	•	•	•	0.23	0.70	0.91	5.70	14.67	1.92	0.13	0.08	0.25	•	24.59
8 - 10 ft	•	•	•	•	•	•	0.49	3.10	0.85	8.27	14.92	1.28	•	0.01	0.12	•	29.04
10 - 12 ft	•	•	•	•	•	•	0.89	3.43	0.61	6.35	8.21	0.35	•	•	0.05	•	19.88
12 - 14 ft	•	•	•	•	•	•	0.52	2.16	0.43	3.43	3.95	0.13	•	•	•	•	10.61
14 - 16 ft	•	•	•	•	•	•	0.22	1.14	0.21	1.13	1.15	0.13	•	•	•	•	3.97
16 - 18 ft	•	•	•	•	•	•	0.12	0.17	0.03	0.30	0.46	•	•	•	•	•	1.08
> 18 ft	•	•	•	•	•	•	•	0.03	0.01	0.43	0.16	•	•	•	•	•	0.63
Total	•	•	•	•	•	•	2.54	11.11	3.44	27.86	48.74	5.06	0.35	0.23	0.67	•	100.00

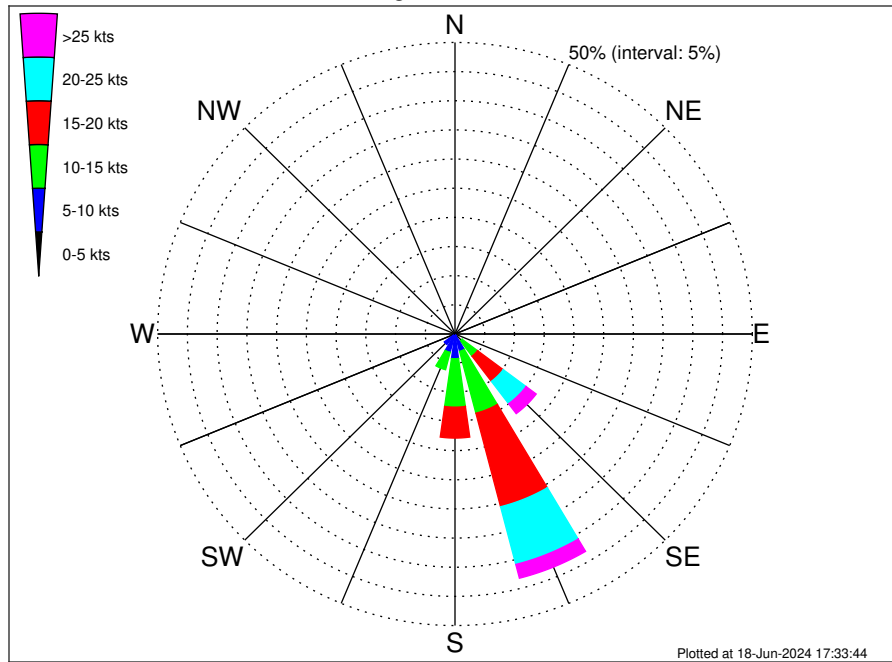
Creocean South Africa EBS N2 Climatological WavePeriod Rose for March: 1979 - 2015



Joint Frequency Distribution Table

	N	NNE	NE	ENE	E	ESE	SE	SSE	S	SSW	SW	WSW	W	WNW	NW	NNW	Total
calm	•	•	•	•	•	•	•	•	•	•	•	•	•	•	•	•	•
1 - 2 sec	•	•	•	•	•	•	•	•	•	•	•	•	•	•	•	•	•
2 - 4 sec	•	•	•	•	•	•	•	•	•	•	•	•	•	•	•	•	•
4 - 6 sec	•	•	•	•	•	•	0.12	0.10	•	•	•	•	•	•	•	•	0.22
6 - 8 sec	•	•	•	•	•	•	1.44	4.97	0.52	•	0.03	•	•	•	•	•	6.96
8 - 10 sec	•	•	•	•	•	•	0.99	5.01	0.93	2.30	2.59	0.63	•	•	•	•	12.45
10 - 12 sec	•	•	•	•	•	•	•	0.49	1.58	11.61	20.84	1.81	•	•	•	•	36.33
12 - 14 sec	•	•	•	•	•	•	•	0.37	0.35	10.21	18.85	1.53	0.15	0.03	•	•	31.49
14 - 16 sec	•	•	•	•	•	•	•	0.15	0.07	3.14	5.20	0.96	0.16	0.14	0.25	•	10.07
18 - 20 sec	•	•	•	•	•	•	•	0.01	•	0.51	0.99	0.13	0.03	0.06	0.37	•	2.09
22 - 24 sec	•	•	•	•	•	•	•	•	•	0.09	0.23	0.01	•	•	0.05	•	0.38
Total	•	•	•	•	•	•	2.54	11.11	3.44	27.86	48.74	5.06	0.35	0.23	0.67	•	100.00

Crocean South Africa EBS N2 Climatological Wind Rose for March: 1979 - 2015



Joint Frequency Distribution Table

	N	NNE	NE	ENE	E	ESE	SE	SSE	S	SSW	SW	WSW	W	WNW	NW	NNW	Total
calm	•	0.01	0.01	0.02	•	•	•	•	0.01	•	0.01	•	0.01	•	•	•	0.08
0 - 5 kts	0.08	0.02	0.12	0.08	0.13	0.14	0.26	0.24	0.39	0.33	0.32	0.28	0.26	0.18	0.20	0.14	3.18
5 - 10 kts	0.06	0.07	0.06	•	0.09	0.35	1.23	2.83	3.84	2.92	1.92	1.24	0.75	0.36	0.09	0.17	15.99
10 - 15 kts	0.03	0.01	•	0.01	0.05	0.24	3.26	10.96	8.30	3.07	1.04	0.85	0.49	0.38	0.23	0.12	29.04
15 - 20 kts	0.01	•	•	•	•	0.21	5.41	16.57	5.31	1.01	0.35	0.28	0.24	0.25	0.20	0.01	29.84
20 - 25 kts	•	•	•	•	•	0.17	4.82	10.22	1.10	0.28	0.15	0.12	0.03	0.03	0.05	0.01	16.99
25 - 30 kts	•	•	•	•	•	0.01	1.88	2.37	0.14	0.02	0.03	0.07	0.02	0.02	•	•	4.57
30 - 35 kts	•	•	•	•	•	•	0.24	0.07	•	•	0.01	•	•	•	•	•	0.32
35 - 40 kts	•	•	•	•	•	•	•	•	•	•	•	•	•	•	•	•	•
40 - 45 kts	•	•	•	•	•	•	•	•	•	•	•	•	•	•	•	•	•
45 - 50 kts	•	•	•	•	•	•	•	•	•	•	•	•	•	•	•	•	•
Total	0.18	0.12	0.18	0.12	0.26	1.12	17.10	43.26	19.09	7.64	3.83	2.83	1.82	1.23	0.76	0.45	100.00