

Even Keel Wind Project - February

Latitude: 35.53 N Longitude: 121.68 W

Weather Days

Wave Height > 6.0 ft Mean: 18.5 days Range: 15.8 - 21.3 days p50:27.5 days p75:25 days p90:22.5 days

Wave Height > 7.0 ft Mean: 14.6 days Range: 10.4 - 18.7 days p50:25 days p75:20.5 days p90:18 days

Wave Height > 8.0 ft Mean: 10.9 days Range: 5.3 - 16.5 days p50:21 days p75:16.5 days p90:13.5 days

Wind Speed > 10.0 knots Mean: 16.2 days Range: 13.3 - 19.2 days p50:16 days p75:14.5 days p90:13.5 days

Wind Speed > 15.0 knots Mean: 6.8 days Range: 4.4 - 9.3 days p50:7 days p75:5.5 days p90:5 days

Wind Speed > 20.0 knots Mean: 2.0 days Range: 0.7 - 3.2 days p50:2.5 days p75:1 days p90:1 days

Working Window

Wave Height < 6.0 ft
A 1 day or longer window will statistically occur 1.1 times per month
A 2 day or longer window will statistically occur 0.5 times per month
A 3 day or longer window will statistically occur 0.1 times per month

Wave Height < 7.0 ft
A 1 day or longer window will statistically occur 1.9 times per month
A 2 day or longer window will statistically occur 0.9 times per month
A 3 day or longer window will statistically occur 0.5 times per month

Wave Height < 8.0 ft
A 1 day or longer window will statistically occur 2.5 times per month
A 2 day or longer window will statistically occur 1.5 times per month
A 3 day or longer window will statistically occur 0.9 times per month

Waves

Mean Height: 8 - 10 ft

The wave heights will occasionally reach > 18 ft, but rarely higher.

Mean Period: 12 - 14 sec

The wave periods will occasionally reach 22 - 24 sec, but rarely longer.

Principle Direction, from: WNW

WindSea/Swell: 1% / 99%

Winds

Mean Speed: 10 - 15 kts

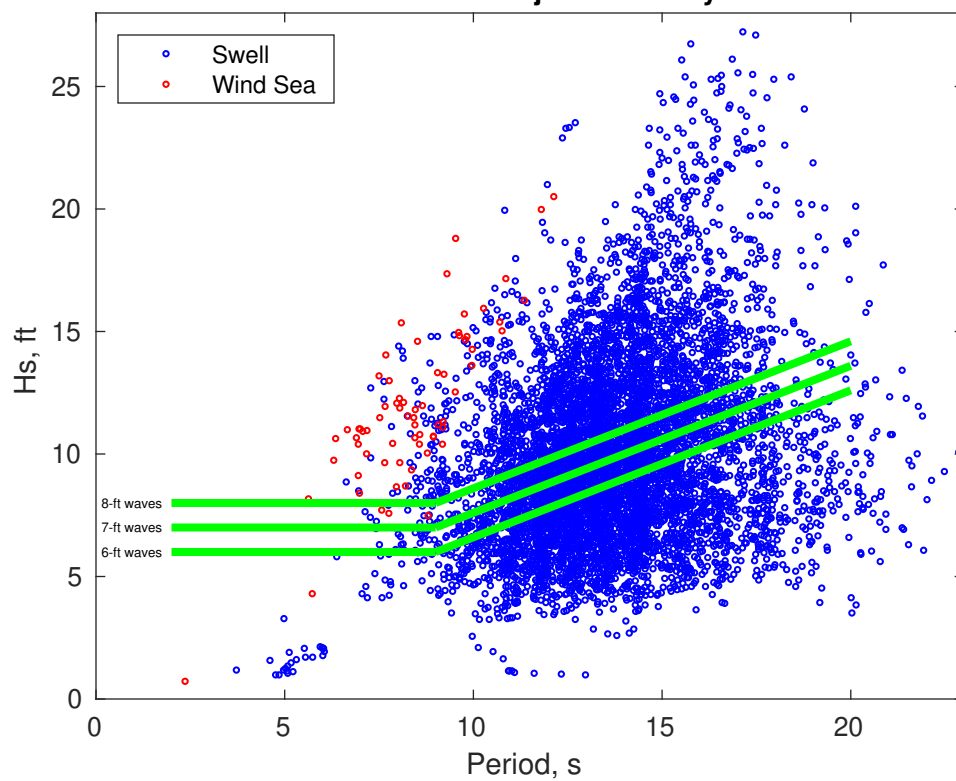
The winds will occasionally reach 25 - 30 kts, but rarely greater.

Principle Direction, from: NNW

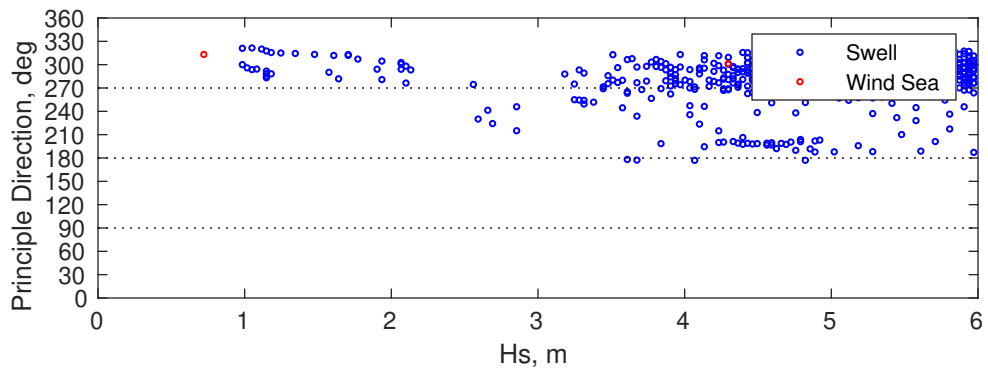
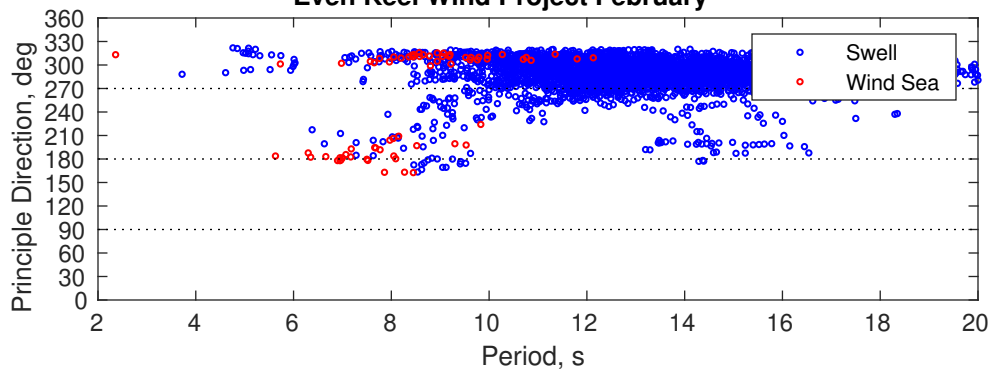
Severe Storms

Severe storms with gale force winds and extreme waves are not expected during this month.

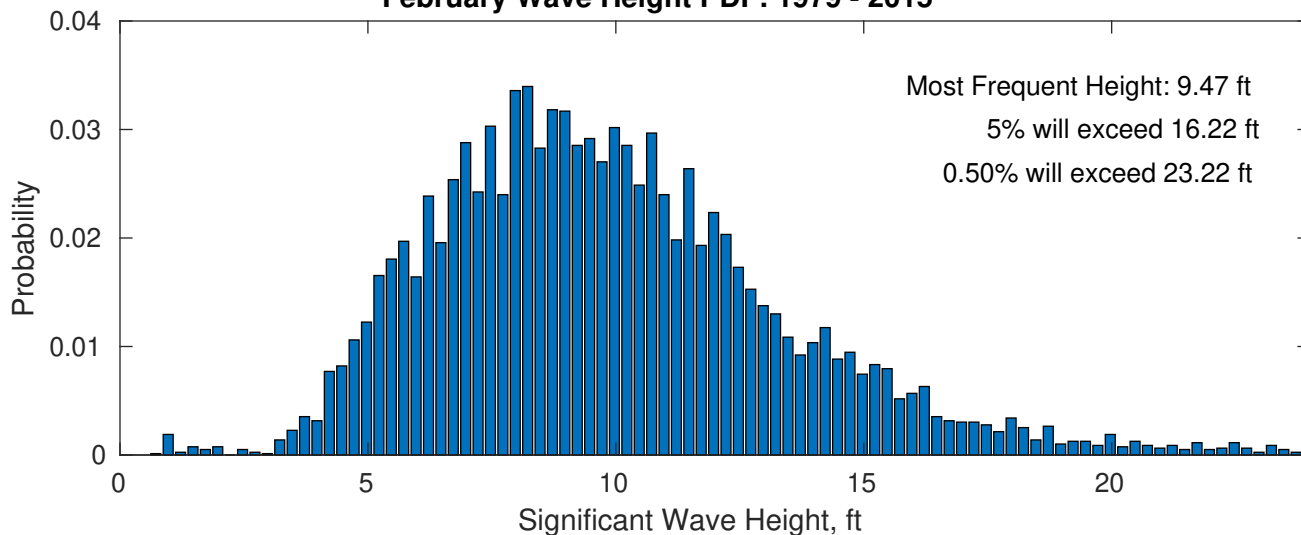
Even Keel Wind Project February



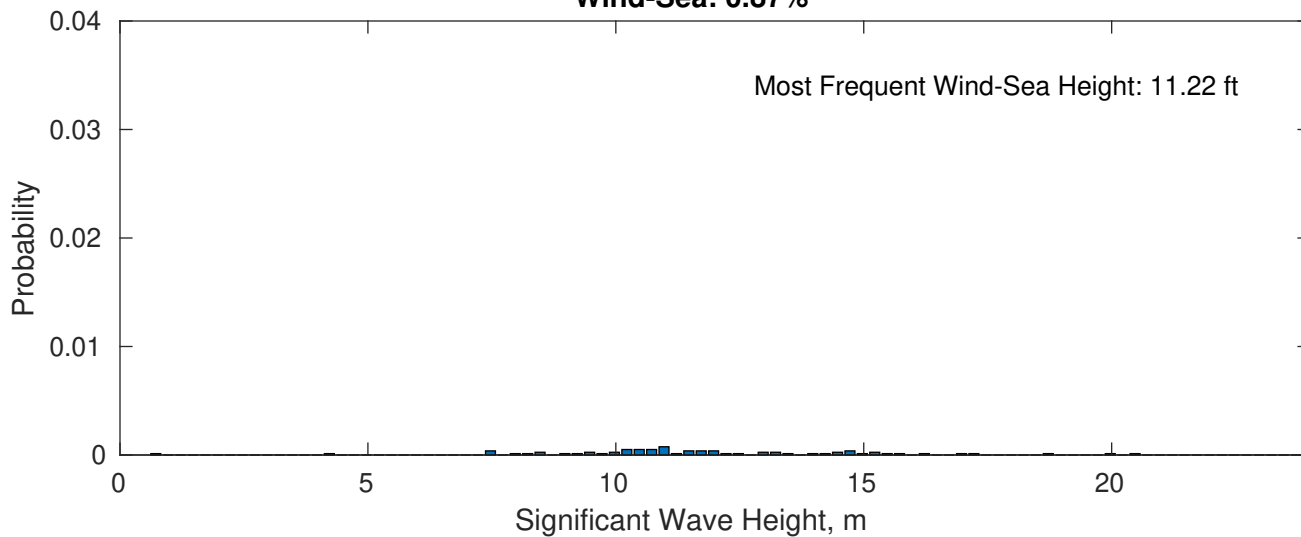
Even Keel Wind Project February



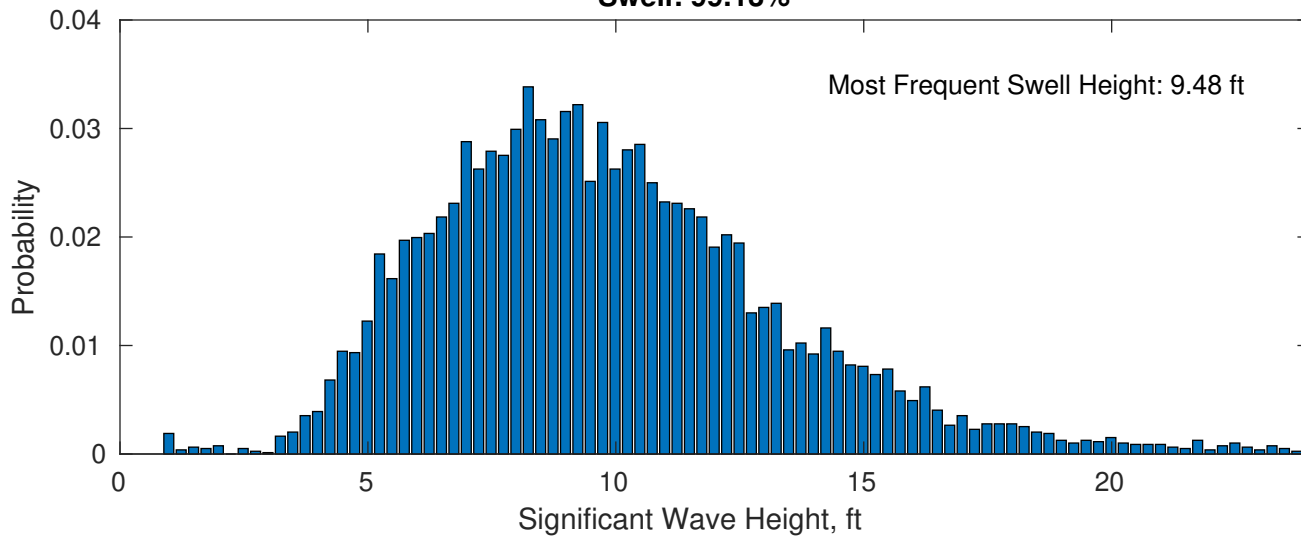
February Wave Height PDF: 1979 - 2015



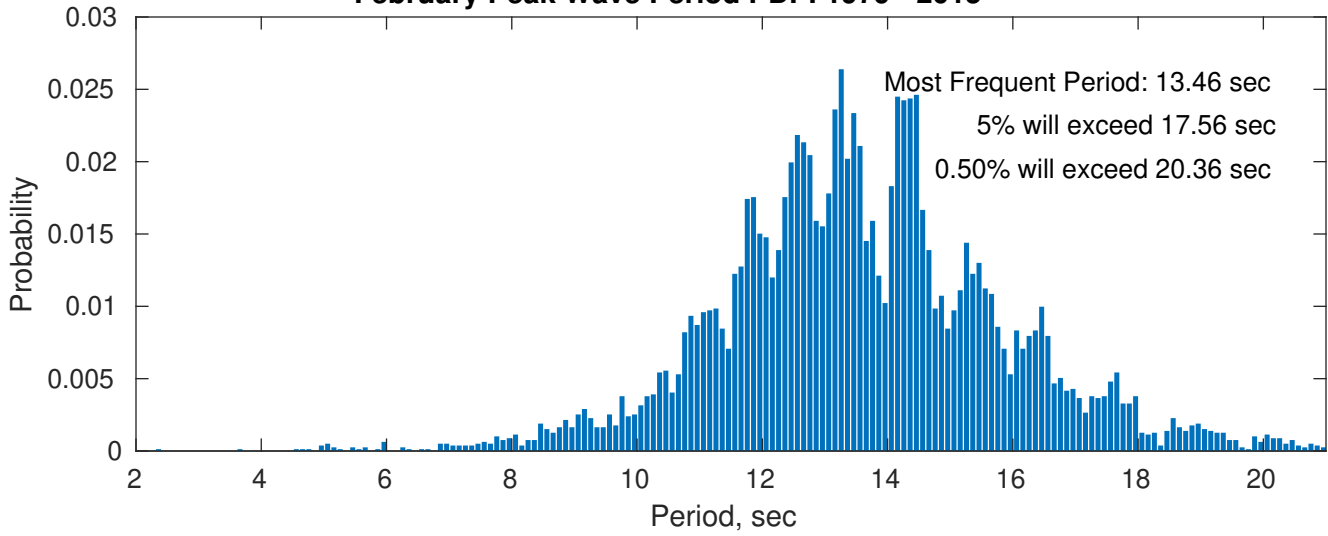
Wind-Sea: 0.87%



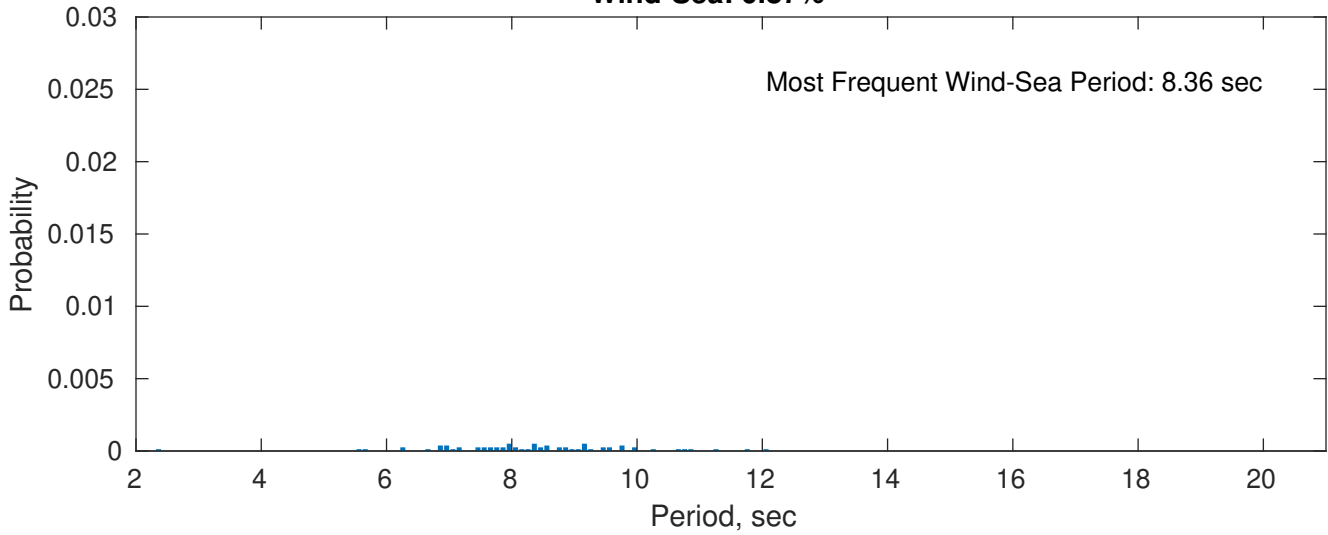
Swell: 99.13%



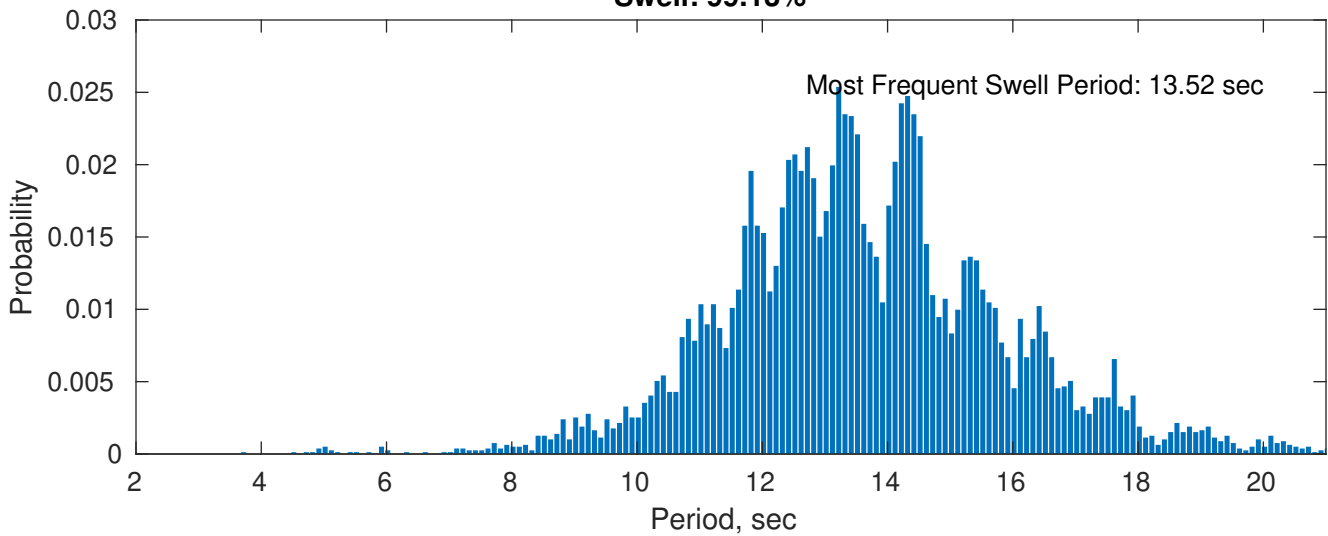
February Peak Wave Period PDF: 1979 - 2015



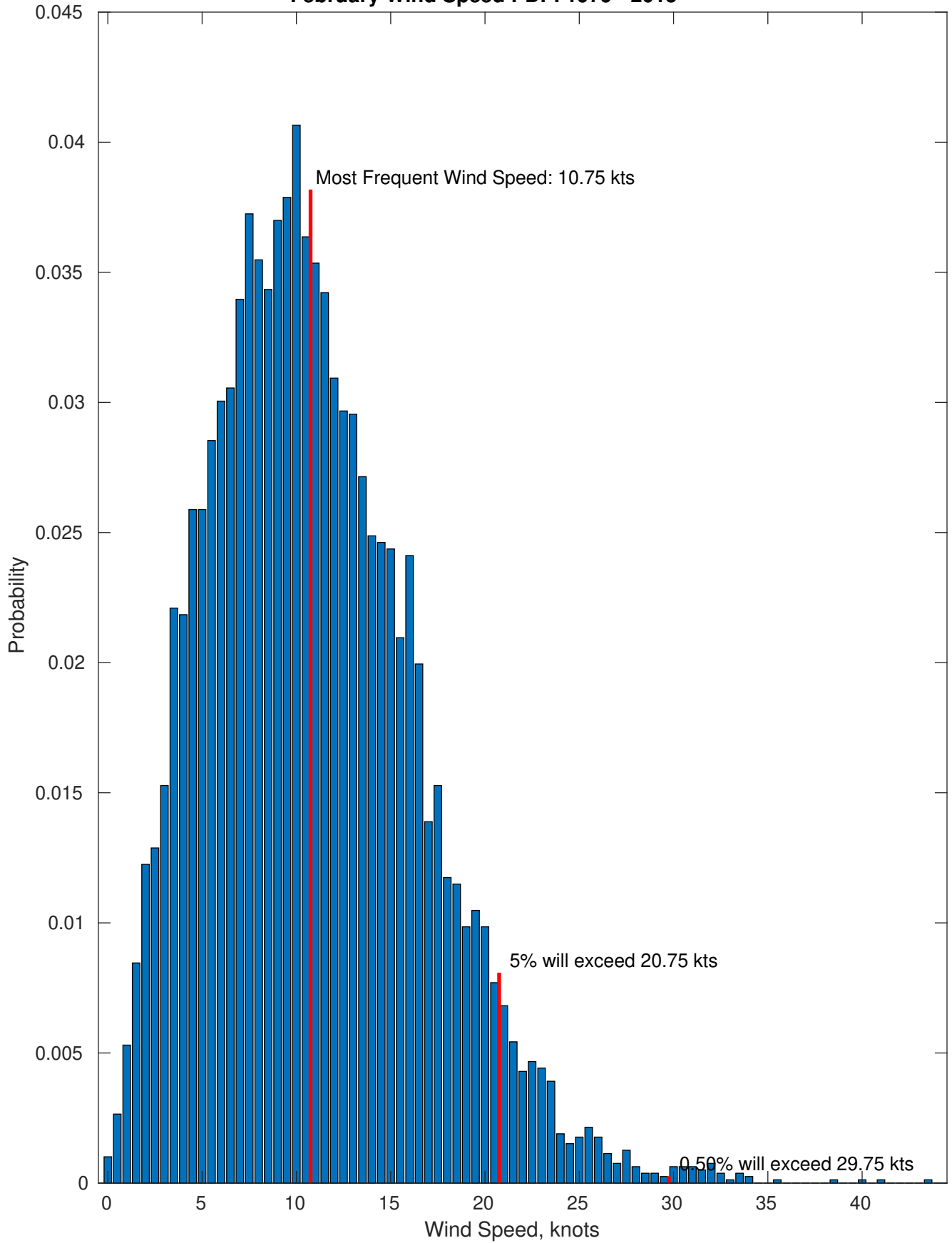
Wind-Sea: 0.87%



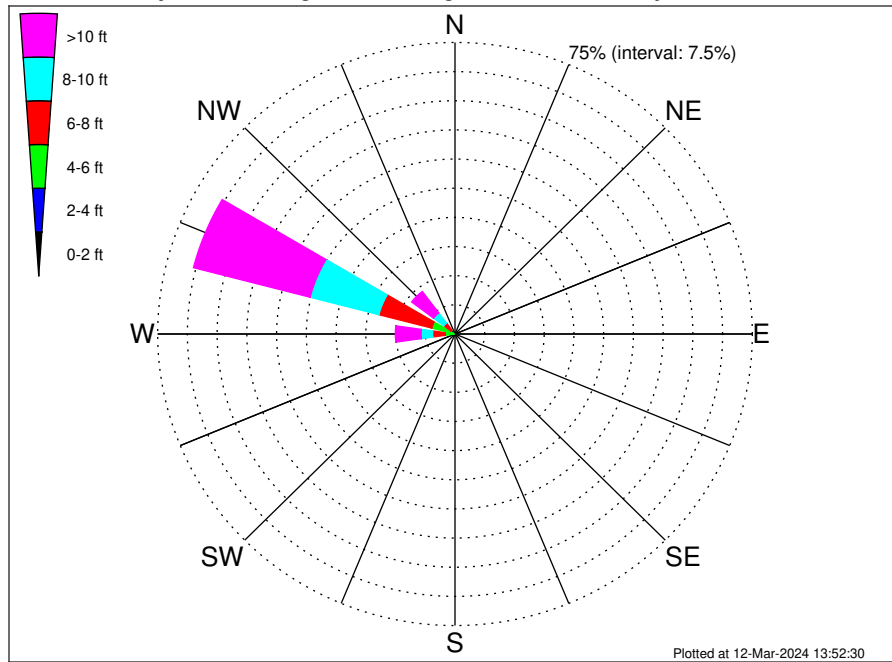
Swell: 99.13%



February Wind Speed PDF: 1979 - 2015



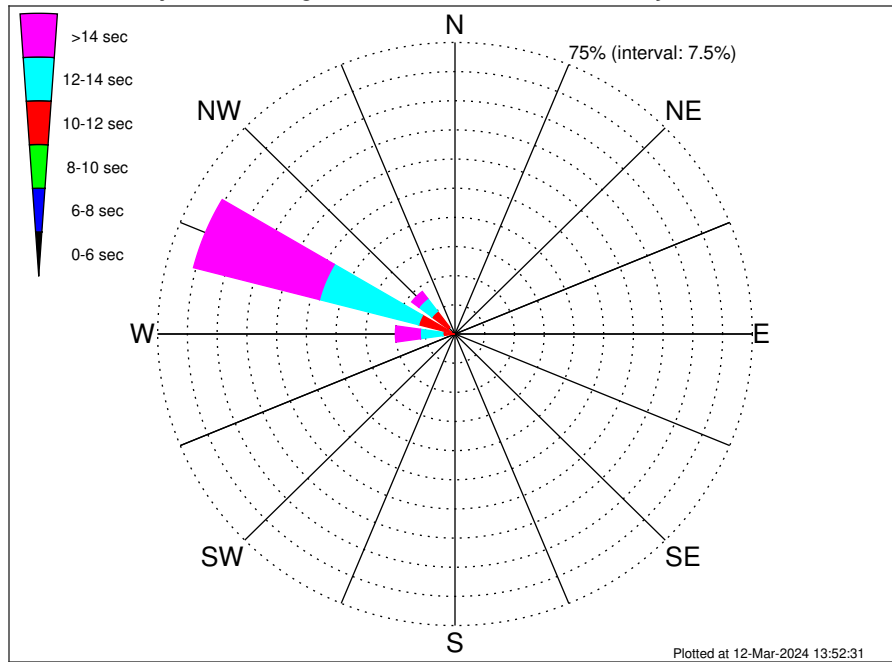
Even Keel Wind Project Climatological WaveHeight Rose for February: 1979 - 2015



Joint Frequency Distribution Table

	N	NNE	NE	ENE	E	ESE	SE	SSE	S	SSW	SW	WSW	W	WNW	NW	NNW	Total
calm	•	•	•	•	•	•	•	•	•	•	•	•	•	0.01	0.04	•	0.05
1 - 2 ft	•	•	•	•	•	•	•	•	•	•	•	•	0.01	0.14	0.15	•	0.30
2 - 4 ft	•	•	•	•	•	•	•	•	0.03	0.01	0.05	0.11	0.28	0.32	0.09	•	0.88
4 - 6 ft	•	•	•	•	•	•	•	•	0.10	0.35	0.09	0.24	2.21	5.61	1.02	•	9.62
6 - 8 ft	•	•	•	•	•	•	•	•	0.13	0.01	0.05	0.28	3.14	13.76	2.23	•	19.61
8 - 10 ft	•	•	•	•	•	•	•	0.03	0.10	0.04	•	0.16	2.93	17.92	3.24	•	24.42
10 - 12 ft	•	•	•	•	•	•	•	0.04	0.13	0.05	0.08	0.28	1.96	14.91	2.78	•	20.21
12 - 14 ft	•	•	•	•	•	•	•	•	0.03	0.10	0.05	0.11	1.86	8.02	1.84	•	12.01
14 - 16 ft	•	•	•	•	•	•	•	•	0.01	0.08	0.06	0.10	1.07	4.26	1.33	•	6.91
16 - 18 ft	•	•	•	•	•	•	•	•	•	0.01	0.03	0.04	0.52	1.67	0.69	•	2.95
> 18 ft	•	•	•	•	•	•	•	•	•	0.01	0.01	0.11	1.07	1.54	0.28	•	3.03
Total	•	•	•	•	•	•	•	0.06	0.52	0.67	0.42	1.44	15.05	68.14	13.70	•	100.00

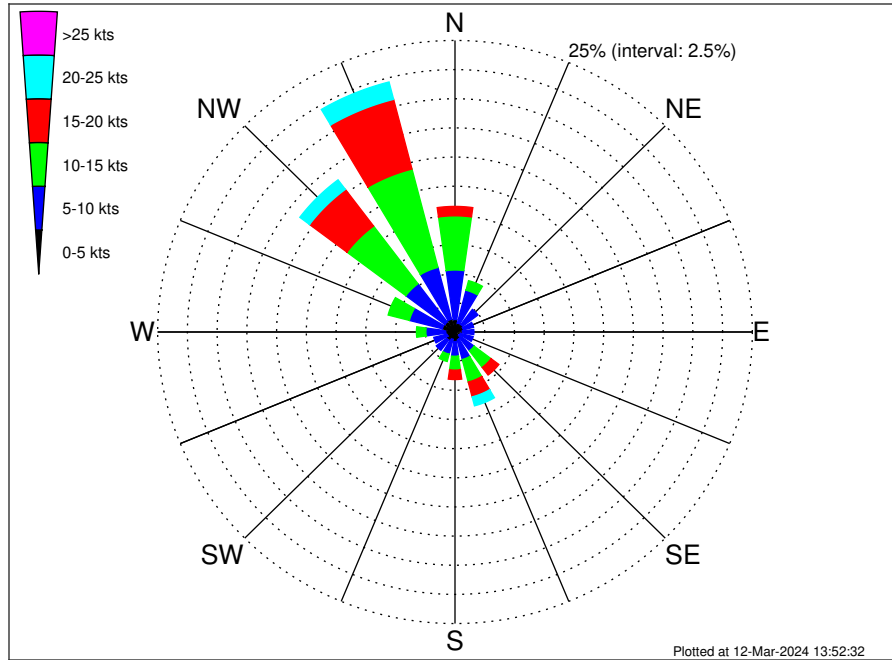
Even Keel Wind Project Climatological WavePeriod Rose for February: 1979 - 2015



Joint Frequency Distribution Table

	N	NNE	NE	ENE	E	ESE	SE	SSE	S	SSW	SW	WSW	W	WNW	NW	NNW	Total
calm	•	•	•	•	•	•	•	•	•	•	•	•	•	•	•	•	•
1 - 2 sec	•	•	•	•	•	•	•	•	•	•	•	•	•	•	•	•	•
2 - 4 sec	•	•	•	•	•	•	•	•	•	•	•	•	•	0.01	0.01	•	0.03
4 - 6 sec	•	•	•	•	•	•	•	•	0.01	•	•	•	•	0.09	0.15	•	0.25
6 - 8 sec	•	•	•	•	•	•	•	0.01	0.18	0.13	0.01	0.01	0.01	0.09	0.29	•	0.73
8 - 10 sec	•	•	•	•	•	•	•	0.05	0.19	0.18	0.16	0.30	0.27	0.86	1.69	•	3.70
10 - 12 sec	•	•	•	•	•	•	•	•	•	•	0.08	0.59	2.80	8.45	5.16	•	17.08
12 - 14 sec	•	•	•	•	•	•	•	•	•	0.10	0.03	0.27	5.69	25.82	4.12	•	36.02
14 - 16 sec	•	•	•	•	•	•	•	•	0.13	0.19	0.13	0.18	4.20	21.67	1.76	•	28.24
18 - 20 sec	•	•	•	•	•	•	•	•	0.01	0.05	0.01	0.06	1.77	8.28	0.40	•	10.59
22 - 24 sec	•	•	•	•	•	•	•	•	•	0.03	•	0.03	0.30	2.88	0.11	•	3.35
Total	•	•	•	•	•	•	•	0.06	0.52	0.67	0.42	1.44	15.05	68.14	13.70	•	100.00

Even Keel Wind Project Climatological Wind Rose for February: 1979 - 2015



Joint Frequency Distribution Table

	N	NNE	NE	ENE	E	ESE	SE	SSE	S	SSW	SW	WSW	W	WNW	NW	NNW	Total
calm	0.01	0.04	0.04	0.04	0.03	•	•	0.03	0.01	0.03	0.01	0.01	0.05	0.03	0.01	0.04	0.37
0 - 5 kts	1.06	0.76	0.77	0.69	0.61	0.48	0.43	0.66	0.81	0.63	0.86	0.68	0.73	1.07	1.06	1.10	12.40
5 - 10 kts	4.24	2.90	1.62	0.88	0.96	1.10	1.59	1.76	1.26	1.31	1.10	1.15	1.67	2.87	4.10	4.58	33.09
10 - 15 kts	4.65	0.85	0.40	0.48	0.24	0.44	1.78	1.99	1.19	0.64	0.61	0.52	0.80	1.84	6.20	8.71	31.34
15 - 20 kts	0.81	0.04	0.01	0.01	0.14	0.11	0.82	1.31	0.81	0.54	0.39	0.30	0.30	0.49	3.94	6.17	16.21
20 - 25 kts	0.08	•	•	•	•	0.05	0.57	0.80	0.35	0.23	0.09	0.05	0.10	0.18	1.02	1.54	5.05
25 - 30 kts	•	•	•	•	•	0.01	0.16	0.29	0.10	0.03	0.01	0.01	•	0.01	0.23	0.19	1.05
30 - 35 kts	•	•	•	•	•	•	0.14	0.24	0.04	0.01	•	•	•	•	•	•	0.43
35 - 40 kts	•	•	•	•	•	•	0.01	0.01	•	•	•	•	•	•	•	•	0.03
40 - 45 kts	•	•	•	•	•	•	•	0.04	•	•	•	•	•	•	•	•	0.04
45 - 50 kts	•	•	•	•	•	•	•	•	•	•	•	•	•	•	•	•	•
Total	10.85	4.58	2.84	2.11	1.97	2.20	5.51	7.12	4.57	3.42	3.07	2.73	3.65	6.49	16.57	22.34	100.00