

## Even Keel Wind Project - June

Latitude: 35.53 N Longitude: 121.68 W

### Weather Days

Wave Height > 6.0 ft Mean: 17.7 days Range: 13.6 - 21.8 days p50:24 days p75:21 days p90:17.5 days

Wave Height > 7.0 ft Mean: 13.7 days Range: 9.4 - 17.9 days p50:18 days p75:15 days p90:11 days

Wave Height > 8.0 ft Mean: 9.3 days Range: 5.1 - 13.5 days p50:12 days p75:7.5 days p90:7 days

Wind Speed > 10.0 knots Mean: 22.7 days Range: 19.4 - 26.1 days p50:23.5 days p75:20.5 days p90:18.5 days

Wind Speed > 15.0 knots Mean: 15.9 days Range: 11.7 - 20.0 days p50:16.5 days p75:14 days p90:9 days

Wind Speed > 20.0 knots Mean: 6.6 days Range: 3.9 - 9.2 days p50:7.5 days p75:5.5 days p90:3 days

### Working Window

Wave Height < 6.0 ft  
A 1 day or longer window will statistically occur 2.1 times per month  
A 2 day or longer window will statistically occur 1.1 times per month  
A 3 day or longer window will statistically occur 0.7 times per month

Wave Height < 7.0 ft  
A 1 day or longer window will statistically occur 3.2 times per month  
A 2 day or longer window will statistically occur 2.1 times per month  
A 3 day or longer window will statistically occur 1.3 times per month

Wave Height < 8.0 ft  
A 1 day or longer window will statistically occur 4.2 times per month  
A 2 day or longer window will statistically occur 2.7 times per month  
A 3 day or longer window will statistically occur 2.0 times per month

### Waves

Mean Height: 6 - 8 ft

The wave heights will occasionally reach 12 - 14 ft, but rarely higher.

Mean Period: 8 - 10 sec

The wave periods will occasionally reach 22 - 24 sec, but rarely longer.

Principle Direction, from: NW

WindSea/Swell: 17% / 83%

### Winds

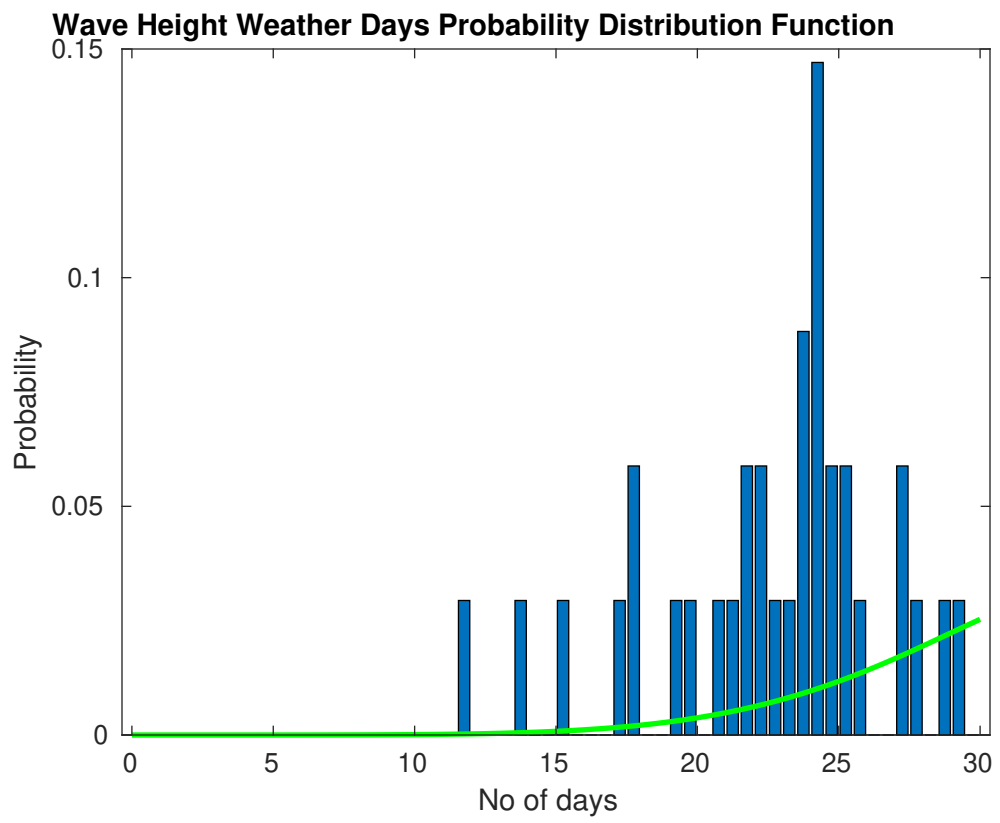
Mean Speed: 15 - 20 kts

The winds will occasionally reach 25 - 30 kts, but rarely greater.

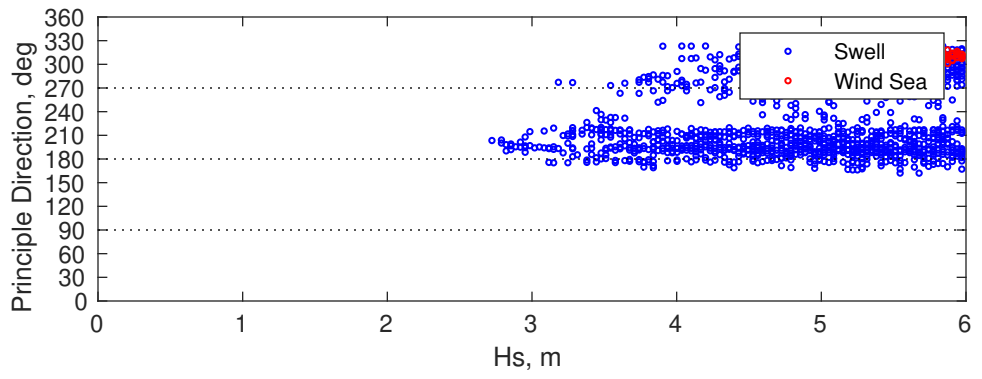
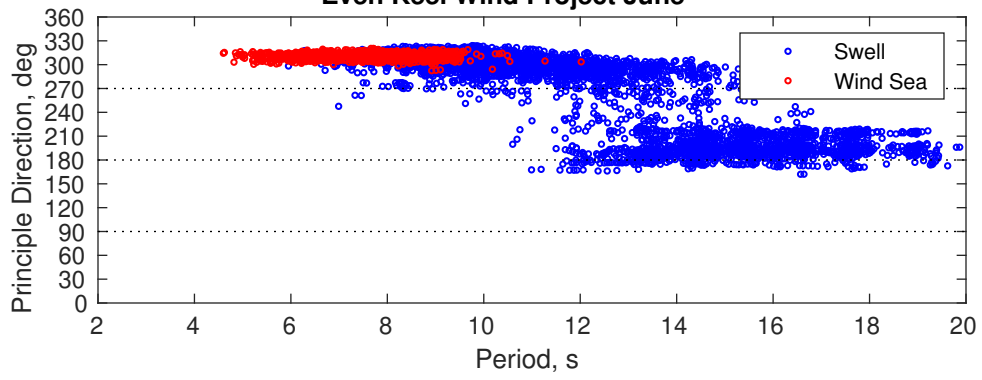
Principle Direction, from: NW

### Severe Storms

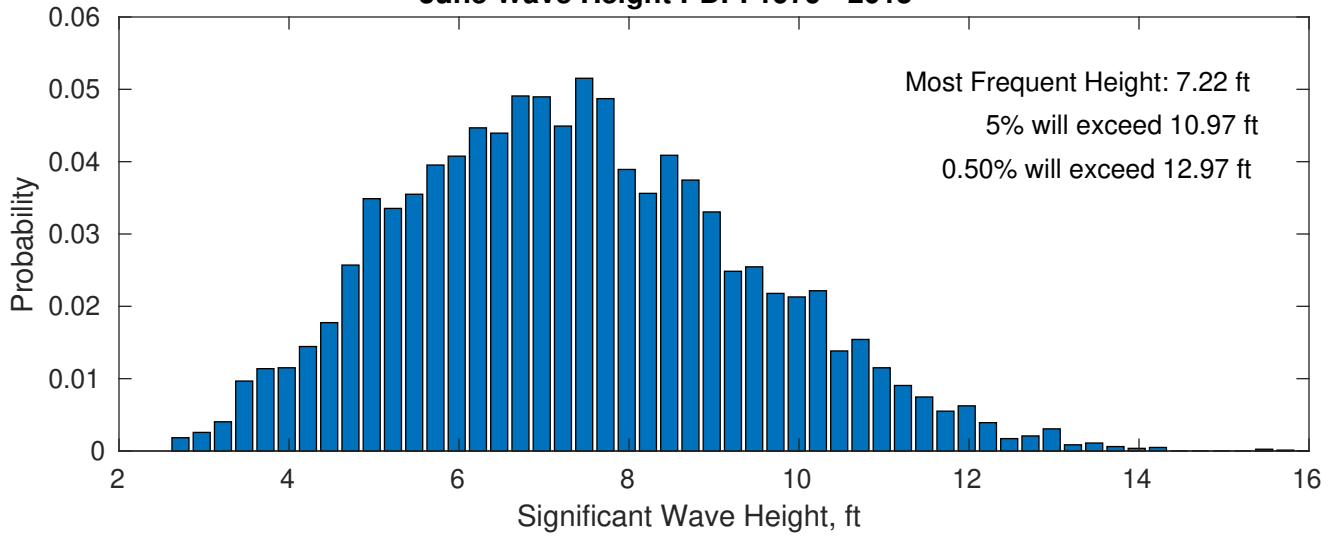
Severe storms with gale force winds and extreme waves are not expected during this month.



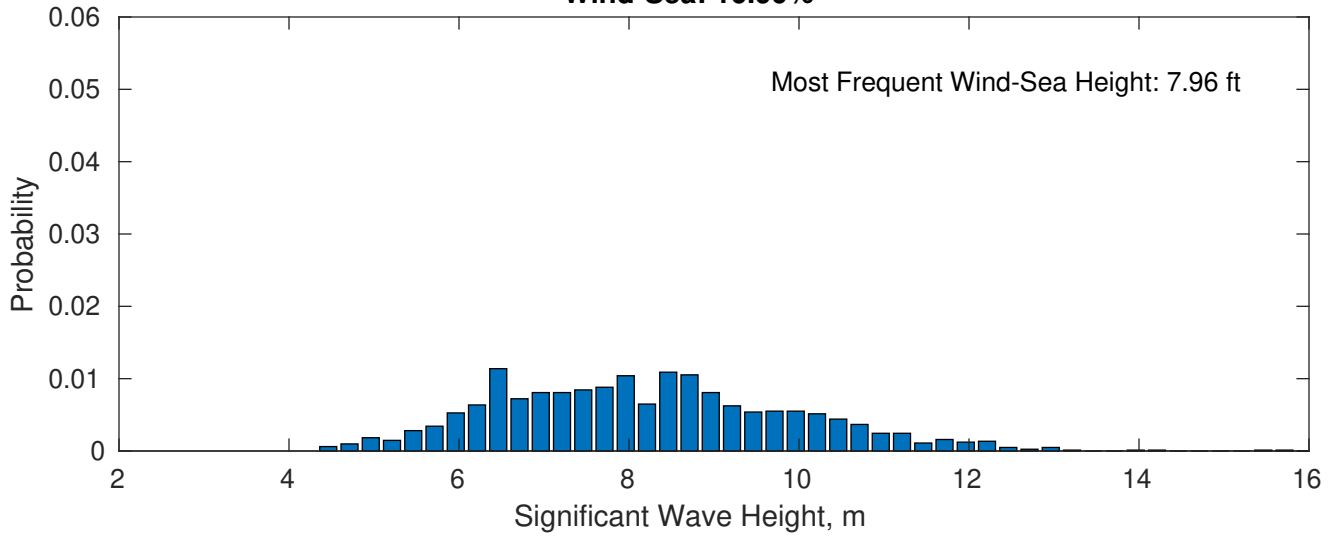
### Even Keel Wind Project June



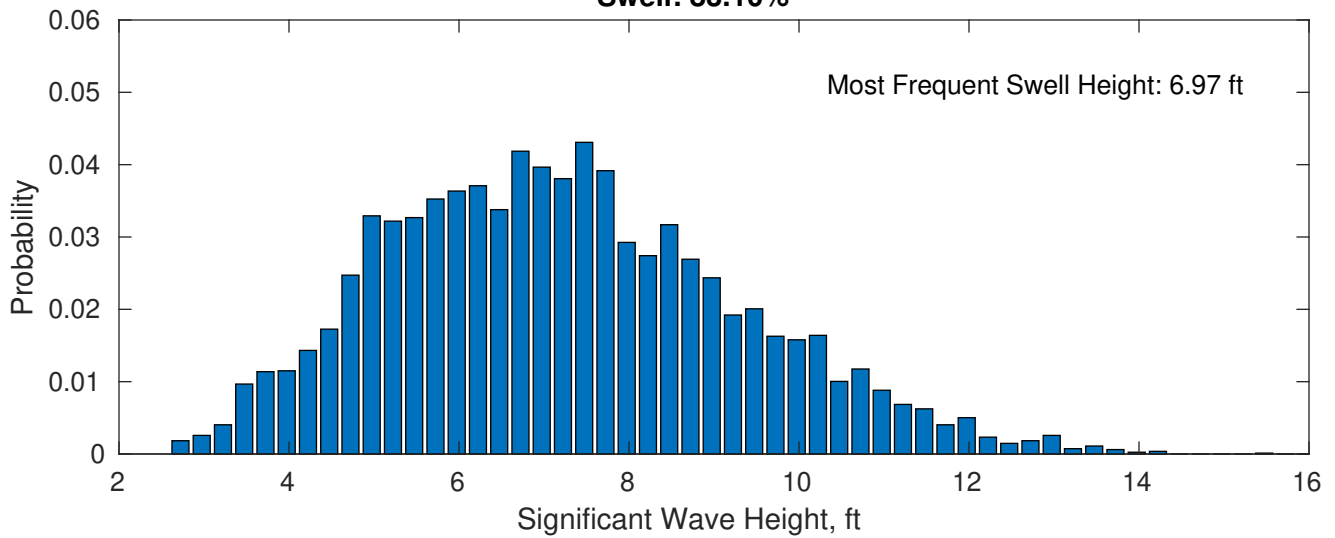
**June Wave Height PDF: 1979 - 2015**



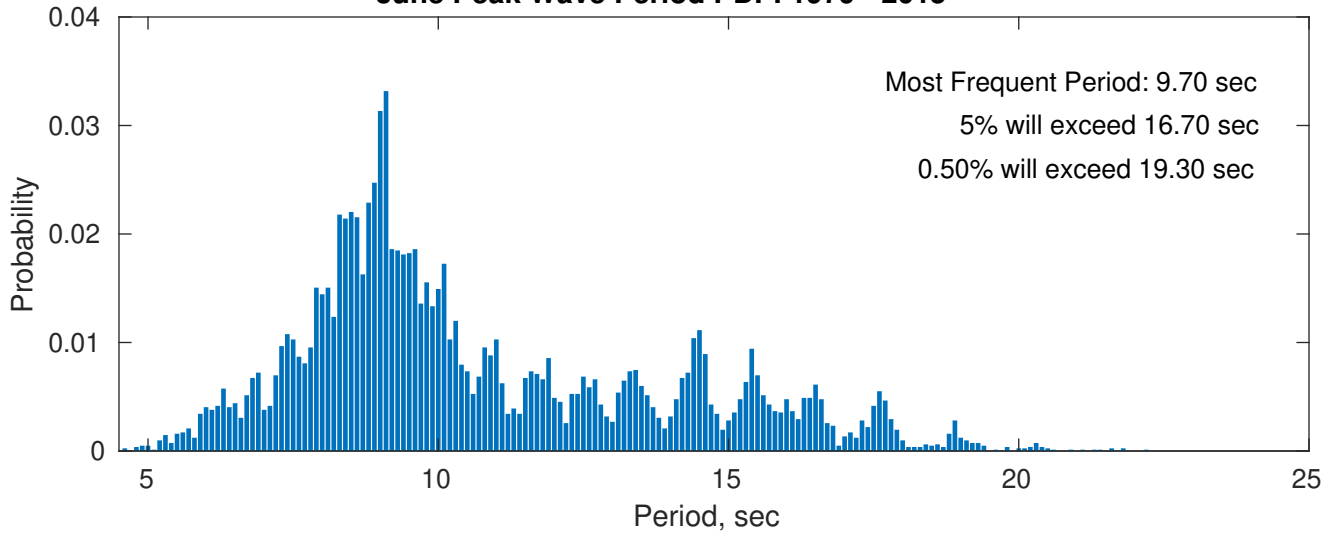
**Wind-Sea: 16.90%**



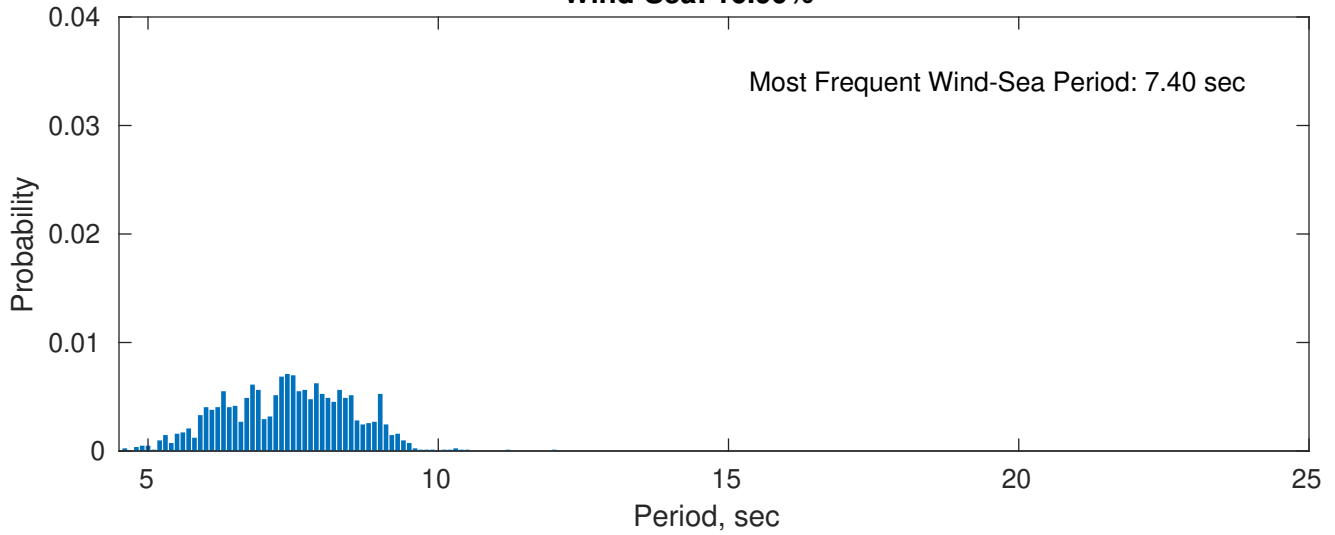
**Swell: 83.10%**



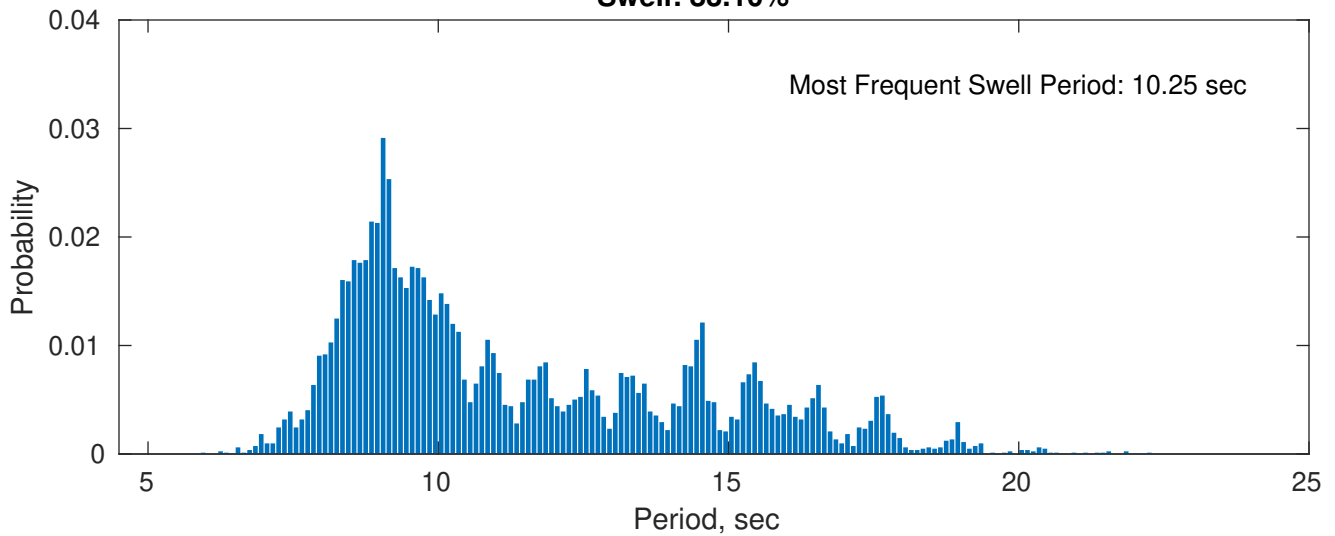
**June Peak Wave Period PDF: 1979 - 2015**



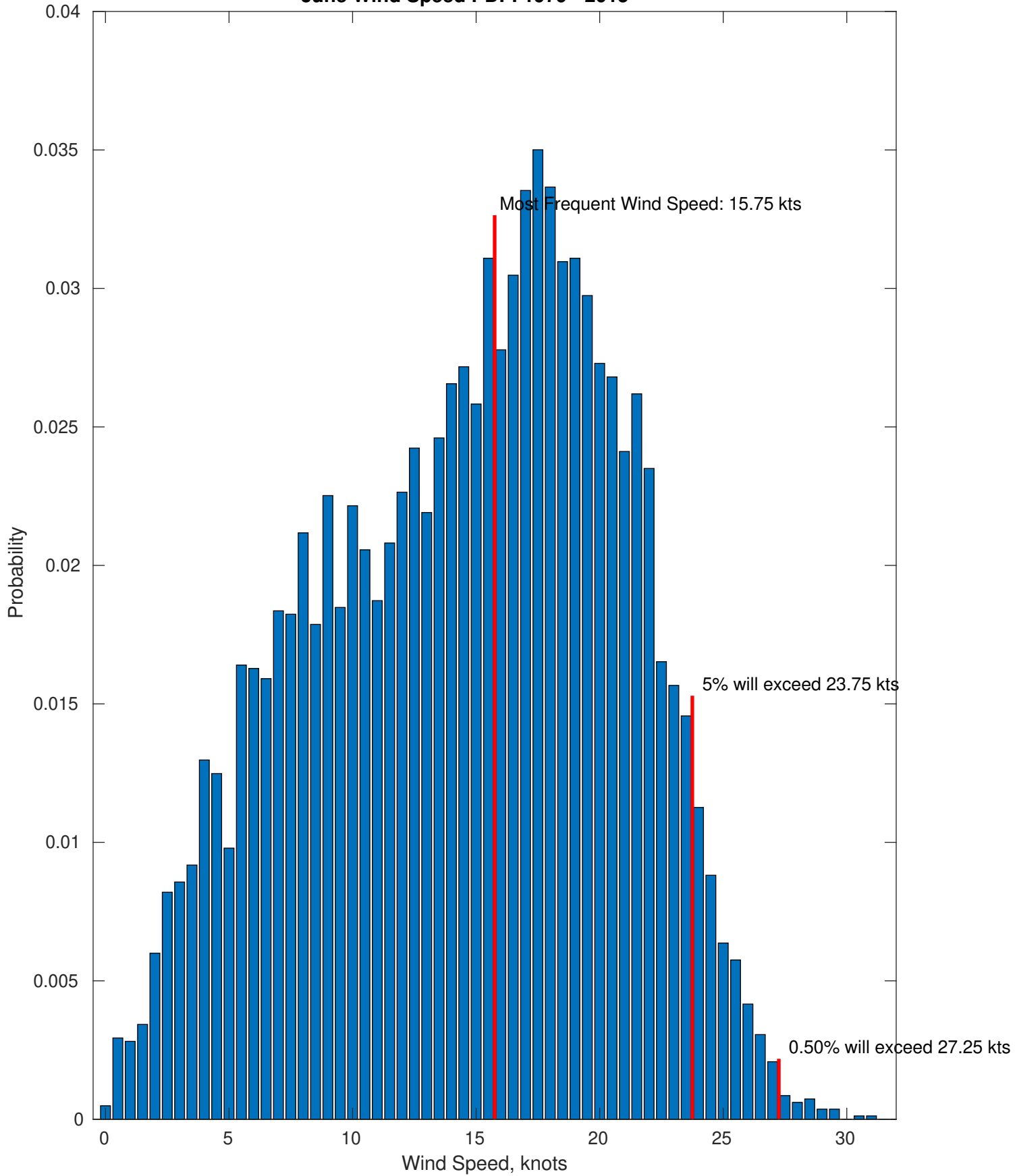
**Wind-Sea: 16.90%**



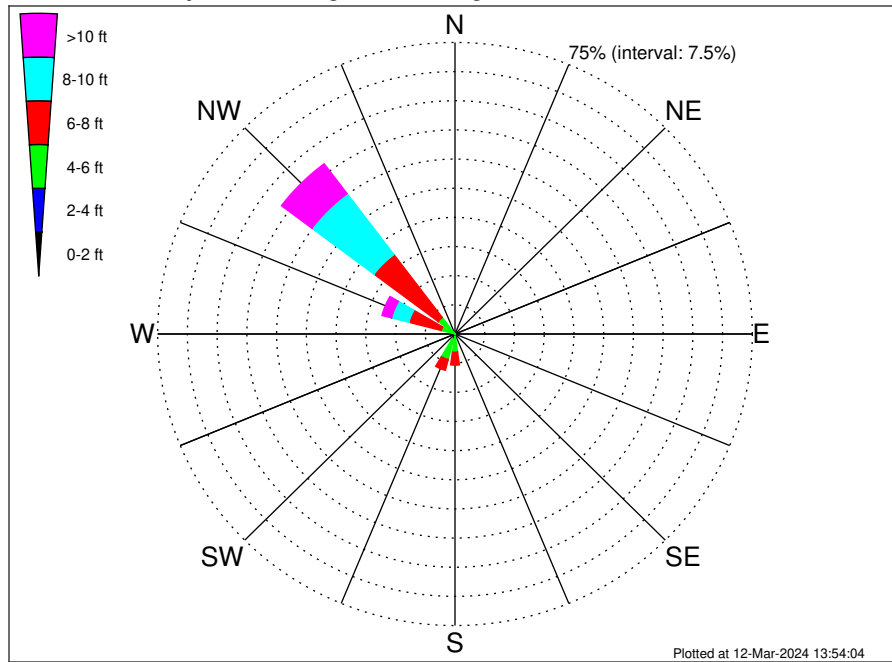
**Swell: 83.10%**



June Wind Speed PDF: 1979 - 2015



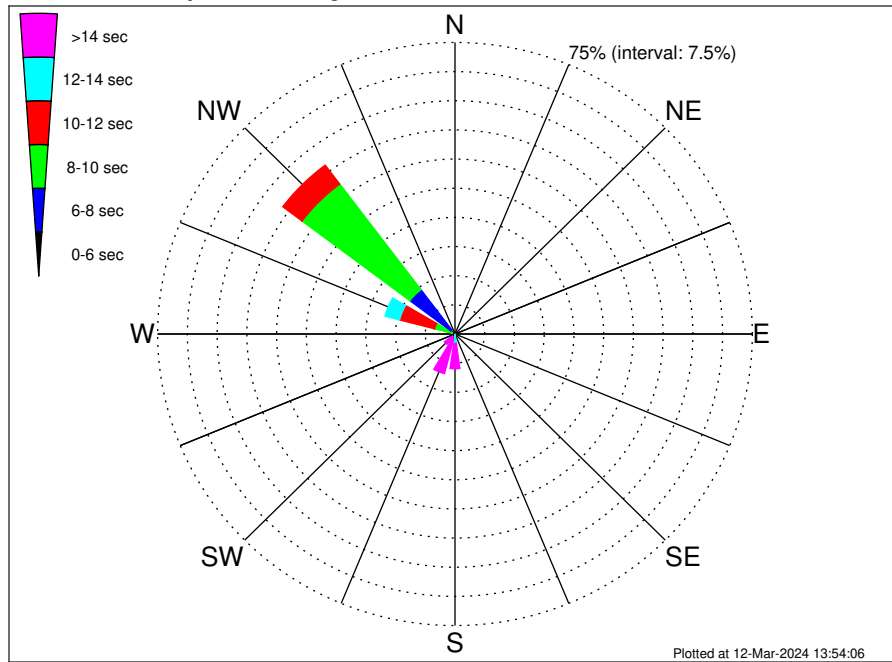
Even Keel Wind Project Climatological WaveHeight Rose for June: 1979 - 2015



Joint Frequency Distribution Table

	N	NNE	NE	ENE	E	ESE	SE	SSE	S	SSW	SW	WSW	W	WNW	NW	NNW	Total
calm	•	•	•	•	•	•	•	•	•	•	•	•	•	•	•	•	•
1 - 2 ft	•	•	•	•	•	•	•	•	•	•	•	•	•	•	•	•	•
2 - 4 ft	•	•	•	•	•	•	•	•	0.61	1.44	0.54	0.05	0.20	0.10	0.01	•	2.95
4 - 6 ft	•	•	•	•	•	•	•	0.11	4.08	5.32	1.68	0.31	1.04	3.46	5.29	•	21.29
6 - 8 ft	•	•	•	•	•	•	•	0.05	3.33	2.88	0.98	0.26	1.03	8.46	20.28	•	37.26
8 - 10 ft	•	•	•	•	•	•	•	•	0.80	0.84	0.12	0.09	0.20	4.50	19.62	•	26.17
10 - 12 ft	•	•	•	•	•	•	•	•	0.13	0.05	•	•	0.01	2.14	8.00	•	10.34
12 - 14 ft	•	•	•	•	•	•	•	•	•	•	•	•	•	0.35	1.52	•	1.87
14 - 16 ft	•	•	•	•	•	•	•	•	•	•	•	•	•	0.01	0.11	•	0.12
16 - 18 ft	•	•	•	•	•	•	•	•	•	•	•	•	•	•	•	•	•
> 18 ft	•	•	•	•	•	•	•	•	•	•	•	•	•	•	•	•	•
Total	•	•	•	•	•	•	•	0.16	8.95	10.54	3.32	0.70	2.47	19.03	54.83	•	100.00

Even Keel Wind Project Climatological WavePeriod Rose for June: 1979 - 2015

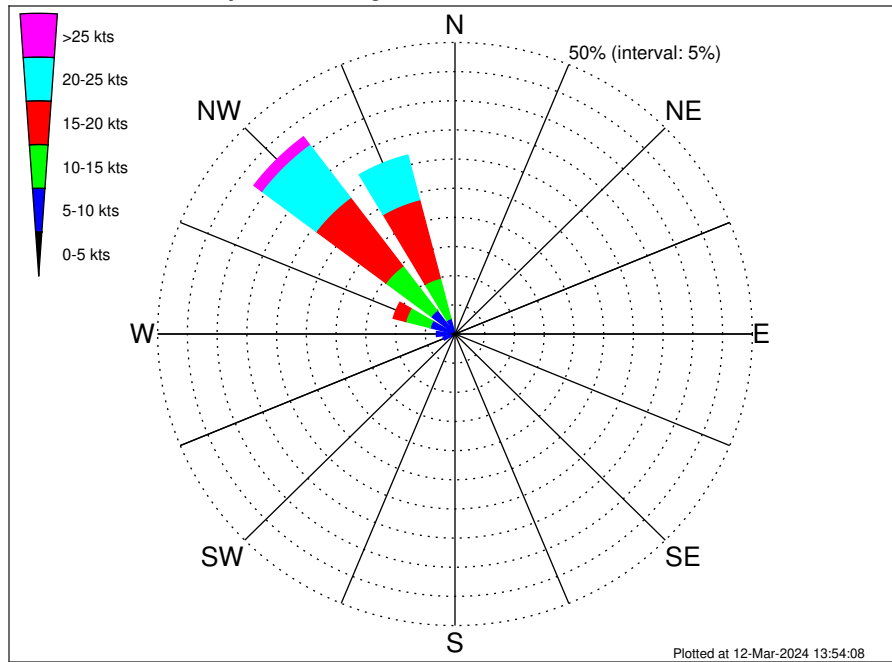


Joint Frequency Distribution Table

	N	NNE	NE	ENE	E	ESE	SE	SSE	S	SSW	SW	WSW	W	WNW	NW	NNW	Total
calm	•	•	•	•	•	•	•	•	•	•	•	•	•	•	•	•	•
1 - 2 sec	•	•	•	•	•	•	•	•	•	•	•	•	•	•	•	•	•
2 - 4 sec	•	•	•	•	•	•	•	•	•	•	•	•	•	•	•	•	•
4 - 6 sec	•	•	•	•	•	•	•	•	•	•	•	•	•	0.16	1.36	•	1.52
6 - 8 sec	•	•	•	•	•	•	•	•	•	•	•	0.01	0.06	0.65	12.90	•	13.62
8 - 10 sec	•	•	•	•	•	•	•	•	•	•	•	0.02	0.50	4.54	34.05	•	39.12
10 - 12 sec	•	•	•	•	•	•	•	0.07	0.11	0.16	0.12	0.09	0.61	9.11	6.08	•	16.35
12 - 14 sec	•	•	•	•	•	•	•	0.06	2.35	1.30	0.73	0.26	0.98	3.78	0.42	•	9.88
14 - 16 sec	•	•	•	•	•	•	•	•	3.59	5.28	1.10	0.26	0.31	0.73	0.02	•	11.29
18 - 20 sec	•	•	•	•	•	•	•	0.02	2.26	3.08	1.06	0.06	0.01	0.06	•	•	6.57
22 - 24 sec	•	•	•	•	•	•	•	•	0.64	0.72	0.29	•	•	•	•	•	1.65
Total	•	•	•	•	•	•	•	0.16	8.95	10.54	3.32	0.70	2.47	19.03	54.83	•	100.00



Even Keel Wind Project Climatological Wind Rose for June: 1979 - 2015



Joint Frequency Distribution Table

	N	NNE	NE	ENE	E	ESE	SE	SSE	S	SSW	SW	WSW	W	WNW	NW	NNW	Total
calm	0.02	•	0.01	0.01	0.01	0.04	0.01	0.04	0.01	0.01	•	0.04	0.06	•	•	0.07	0.34
0 - 5 kts	0.24	0.09	0.09	0.01	0.07	0.12	0.32	0.54	0.42	0.48	0.58	0.65	0.95	0.77	0.53	0.51	6.36
5 - 10 kts	0.43	0.10	0.01	•	0.04	0.09	0.47	0.64	0.53	0.71	0.81	1.37	2.12	3.56	4.50	2.14	17.50
10 - 15 kts	0.44	•	•	•	•	0.04	0.16	0.23	0.18	0.05	0.04	0.10	0.75	4.25	9.55	7.16	22.94
15 - 20 kts	0.12	•	•	•	•	•	0.01	0.04	•	•	•	•	•	2.15	14.69	13.90	30.92
20 - 25 kts	•	•	•	•	•	•	0.01	0.01	•	•	•	•	•	0.11	11.43	7.91	19.47
25 - 30 kts	•	•	•	•	•	•	•	0.01	•	•	•	•	•	•	1.62	0.81	2.44
30 - 35 kts	•	•	•	•	•	•	•	•	•	•	•	•	•	•	0.02	•	0.02
35 - 40 kts	•	•	•	•	•	•	•	•	•	•	•	•	•	•	•	•	•
40 - 45 kts	•	•	•	•	•	•	•	•	•	•	•	•	•	•	•	•	•
45 - 50 kts	•	•	•	•	•	•	•	•	•	•	•	•	•	•	•	•	•
Total	1.26	0.18	0.11	0.02	0.12	0.28	0.98	1.51	1.14	1.25	1.42	2.15	3.88	10.84	42.34	32.51	100.00