

Even Keel Wind Project - March

Latitude: 35.53 N Longitude: 121.68 W

Weather Days

Wave Height > 6.0 ft Mean: 19.6 days Range: 16.7 - 22.5 days p50:27.5 days p75:25.5 days p90:22.5 days

Wave Height > 7.0 ft Mean: 15.6 days Range: 11.5 - 19.6 days p50:24.5 days p75:22 days p90:18 days

Wave Height > 8.0 ft Mean: 11.4 days Range: 6.5 - 16.2 days p50:21 days p75:18.5 days p90:14 days

Wind Speed > 10.0 knots Mean: 18.9 days Range: 15.7 - 22.0 days p50:19 days p75:17 days p90:15 days

Wind Speed > 15.0 knots Mean: 9.6 days Range: 6.3 - 13.0 days p50:10 days p75:7.5 days p90:6 days

Wind Speed > 20.0 knots Mean: 3.1 days Range: 1.5 - 4.7 days p50:3 days p75:2 days p90:1.5 days

Working Window

Wave Height < 6.0 ft
A 1 day or longer window will statistically occur 1.3 times per month
A 2 day or longer window will statistically occur 0.4 times per month
A 3 day or longer window will statistically occur 0.3 times per month

Wave Height < 7.0 ft
A 1 day or longer window will statistically occur 2.1 times per month
A 2 day or longer window will statistically occur 1.0 times per month
A 3 day or longer window will statistically occur 0.5 times per month

Wave Height < 8.0 ft
A 1 day or longer window will statistically occur 3.1 times per month
A 2 day or longer window will statistically occur 1.7 times per month
A 3 day or longer window will statistically occur 0.9 times per month

Waves

Mean Height: 8 - 10 ft

The wave heights will occasionally reach > 18 ft, but rarely higher.

Mean Period: 12 - 14 sec

The wave periods will occasionally reach 22 - 24 sec, but rarely longer.

Principle Direction, from: WNW

WindSea/Swell: 1% / 99%

Winds

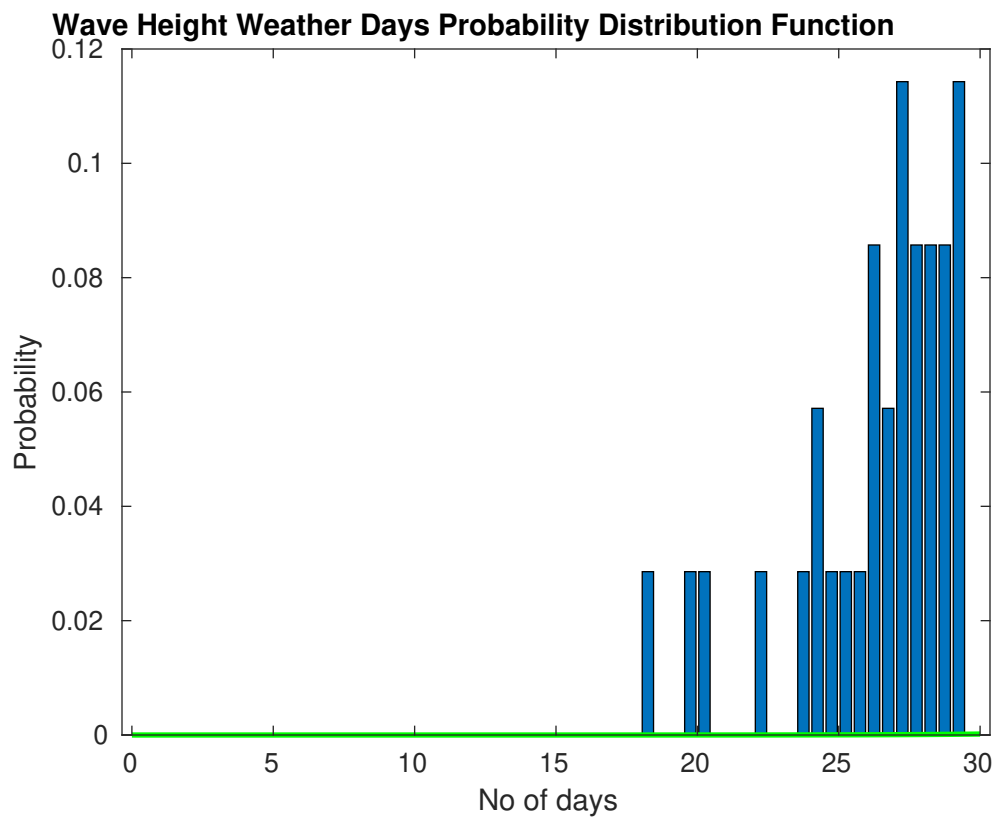
Mean Speed: 10 - 15 kts

The winds will occasionally reach 25 - 30 kts, but rarely greater.

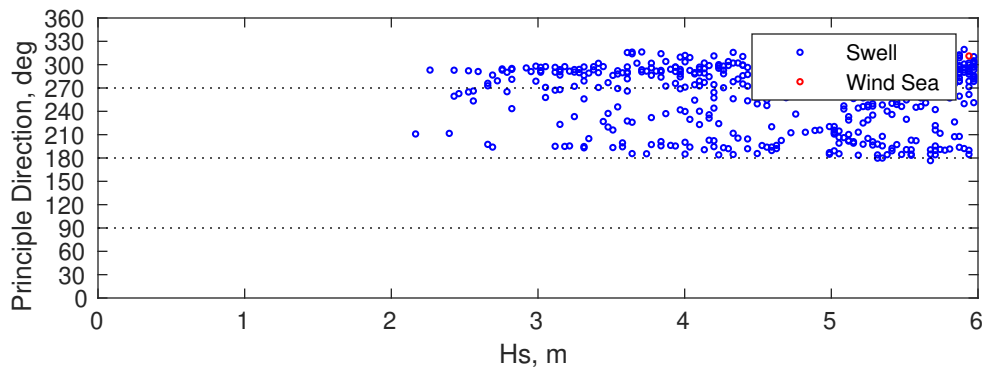
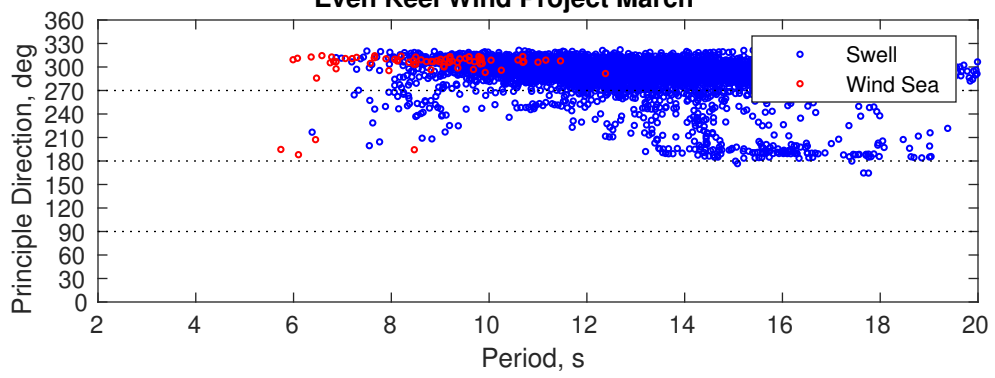
Principle Direction, from: NNW

Severe Storms

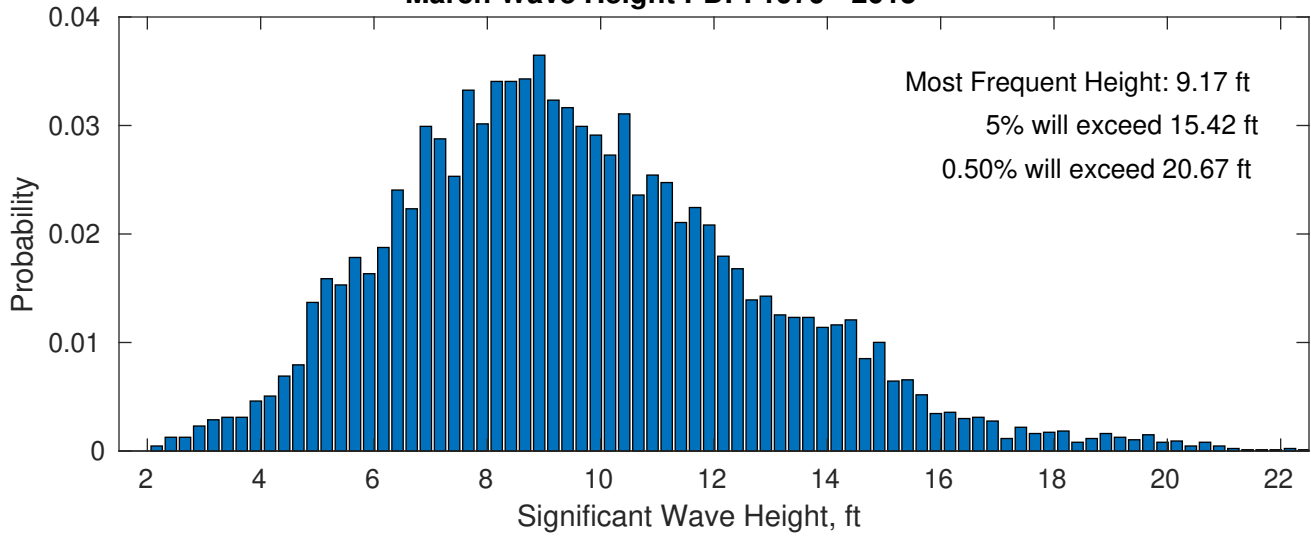
Severe storms with gale force winds and extreme waves are not expected during this month.



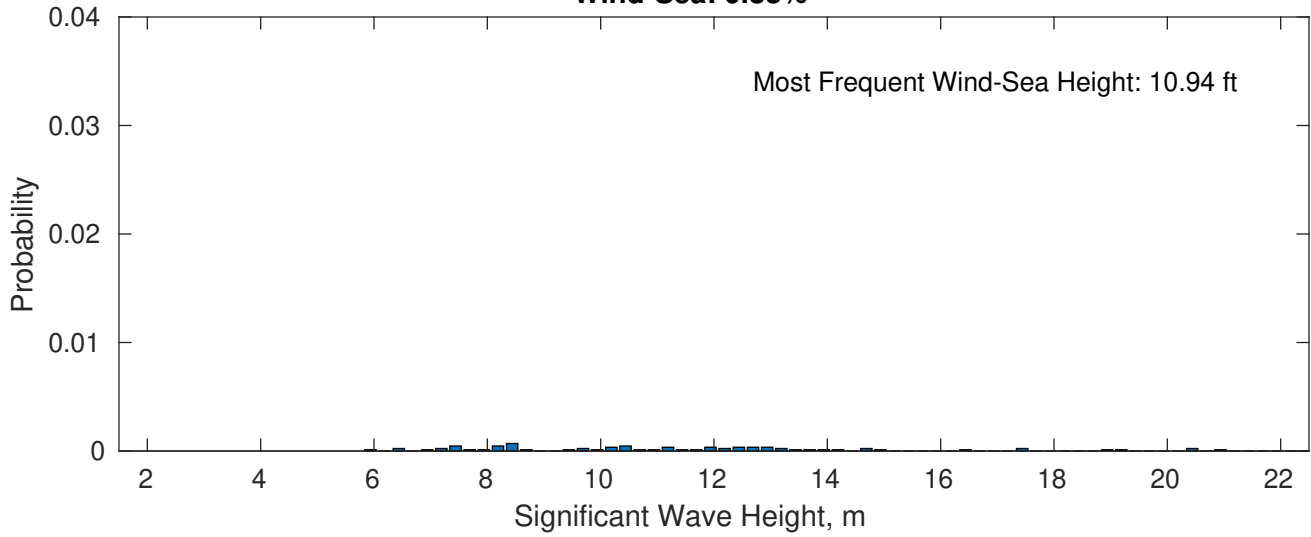
Even Keel Wind Project March



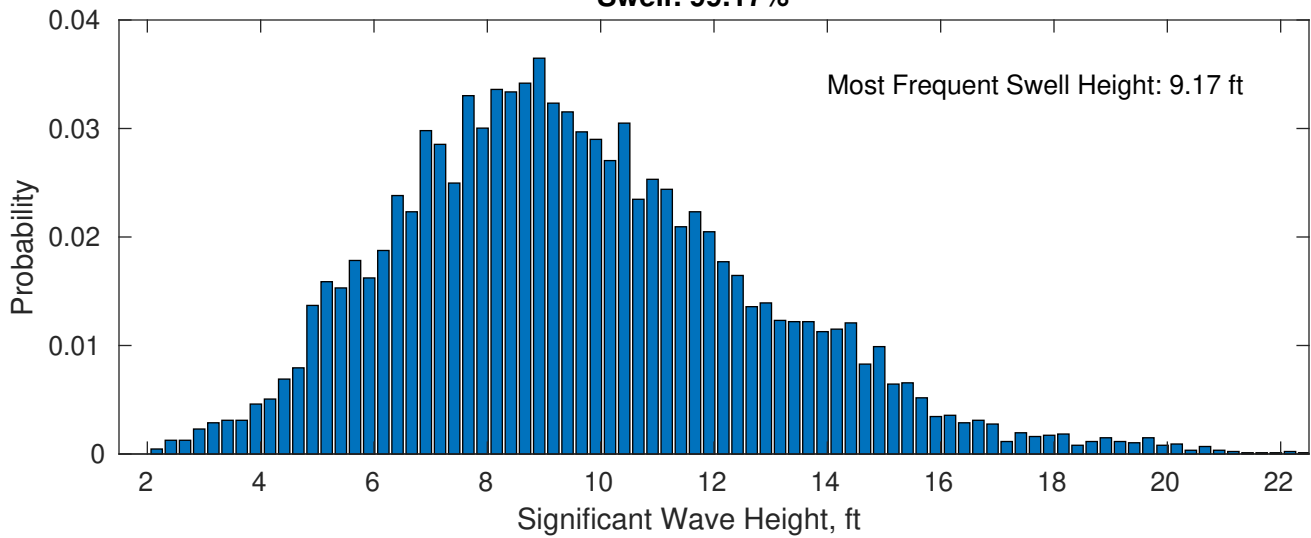
March Wave Height PDF: 1979 - 2015



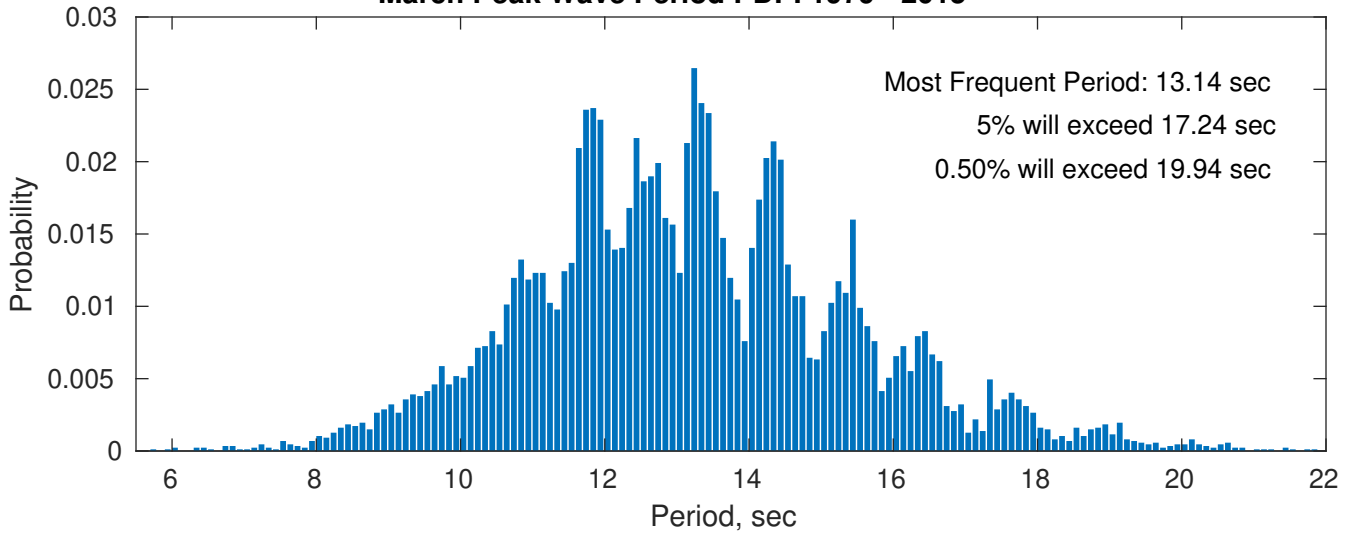
Wind-Sea: 0.83%



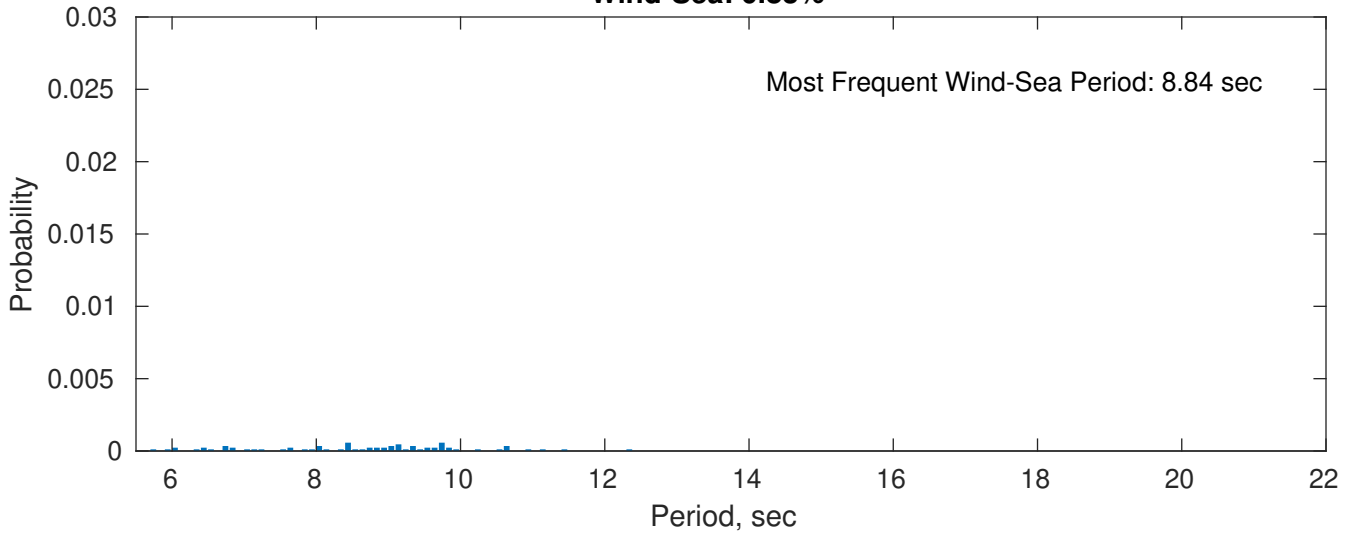
Swell: 99.17%



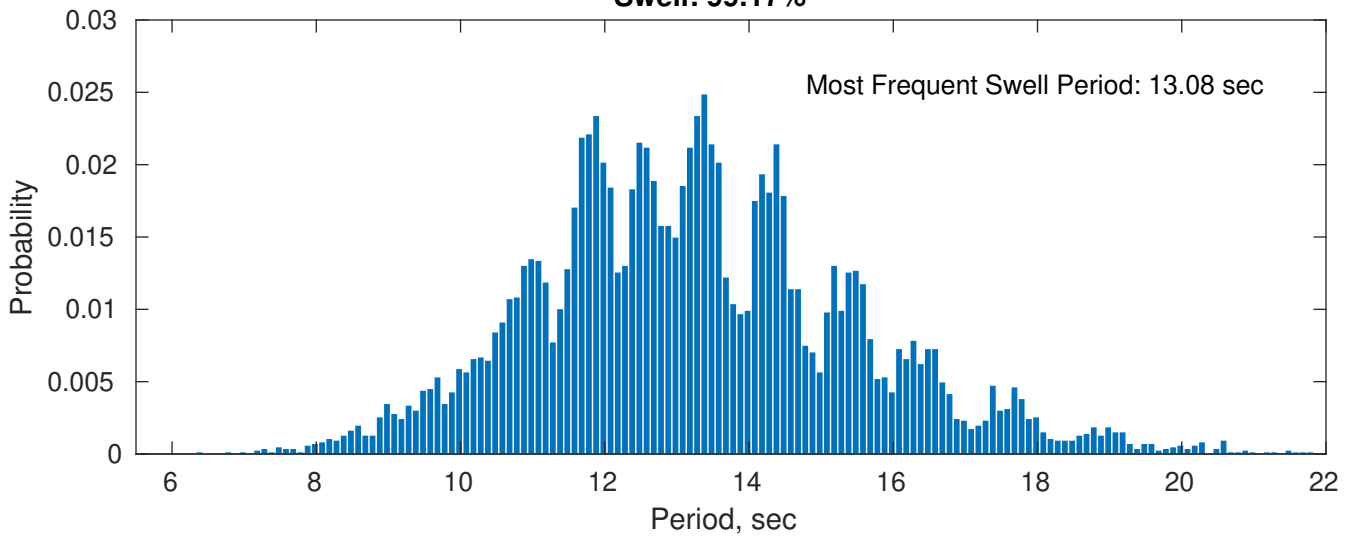
March Peak Wave Period PDF: 1979 - 2015



Wind-Sea: 0.83%

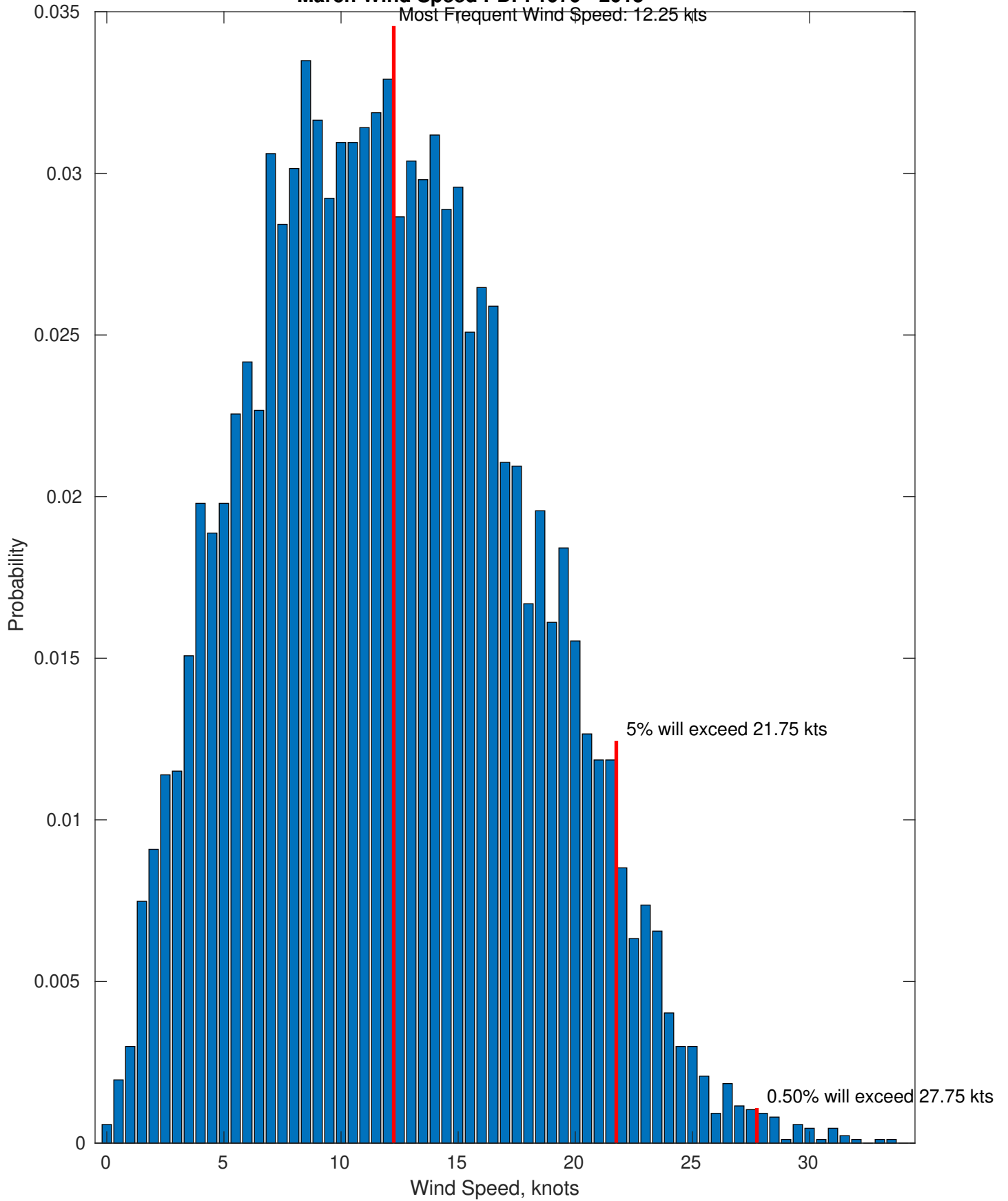


Swell: 99.17%

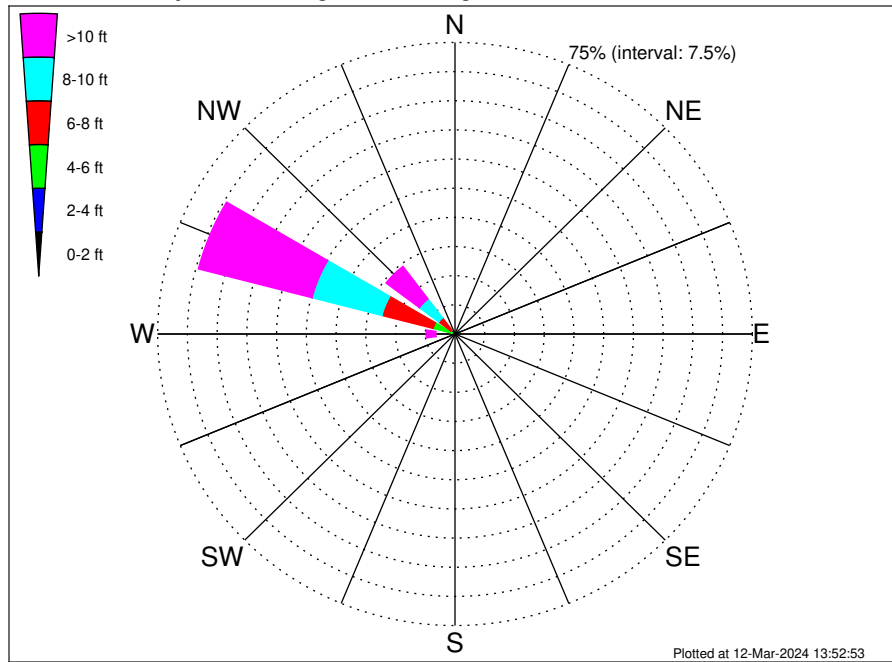


March Wind Speed PDF: 1979 - 2015

Most Frequent Wind Speed: 12.25 kts



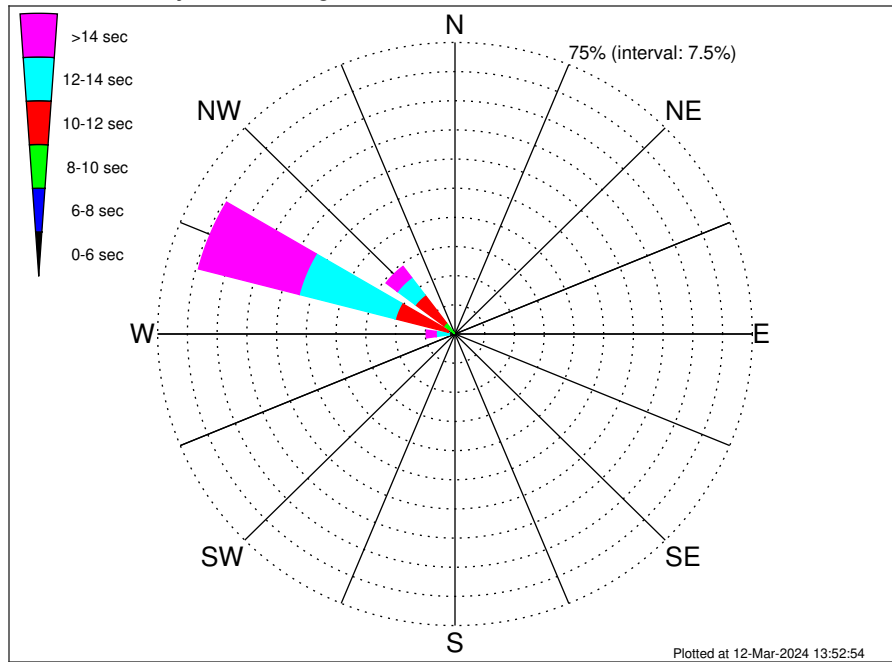
Even Keel Wind Project Climatological WaveHeight Rose for March: 1979 - 2015



Joint Frequency Distribution Table

	N	NNE	NE	ENE	E	ESE	SE	SSE	S	SSW	SW	WSW	W	WNW	NW	NNW	Total
calm	•	•	•	•	•	•	•	•	•	•	•	•	•	•	•	•	•
1 - 2 ft	•	•	•	•	•	•	•	•	•	•	•	•	•	•	•	•	•
2 - 4 ft	•	•	•	•	•	•	•	•	0.02	0.24	0.09	0.09	0.25	0.78	0.09	•	1.58
4 - 6 ft	•	•	•	•	•	•	•	•	0.36	0.55	0.28	0.46	1.29	4.90	1.25	•	9.09
6 - 8 ft	•	•	•	•	•	•	•	0.02	0.43	0.17	0.20	0.43	1.85	13.36	3.82	•	20.28
8 - 10 ft	•	•	•	•	•	•	•	•	0.02	0.08	0.03	0.33	1.44	18.19	6.10	•	26.20
10 - 12 ft	•	•	•	•	•	•	•	•	•	•	0.01	0.13	0.66	14.42	4.88	•	20.09
12 - 14 ft	•	•	•	•	•	•	•	•	•	0.01	0.03	•	0.46	8.25	3.22	•	11.98
14 - 16 ft	•	•	•	•	•	•	•	•	•	0.02	0.01	0.01	0.60	4.61	1.68	•	6.94
16 - 18 ft	•	•	•	•	•	•	•	•	•	•	•	0.01	0.17	1.42	0.46	•	2.06
> 18 ft	•	•	•	•	•	•	•	•	•	•	•	0.03	0.55	0.92	0.28	•	1.78
Total	•	•	•	•	•	•	•	0.02	0.83	1.08	0.66	1.50	7.27	66.86	21.78	•	100.00

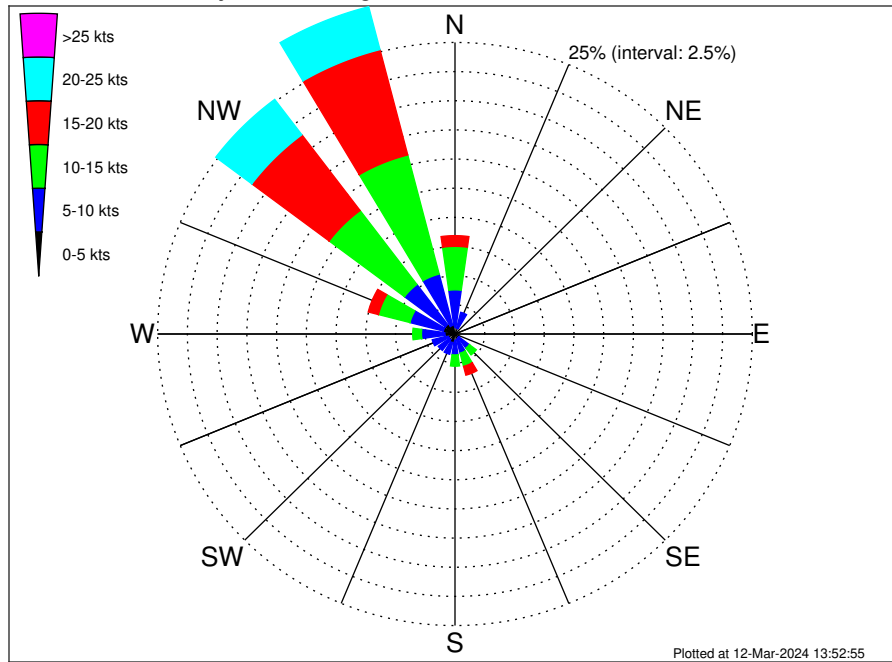
Even Keel Wind Project Climatological WavePeriod Rose for March: 1979 - 2015



Joint Frequency Distribution Table

	N	NNE	NE	ENE	E	ESE	SE	SSE	S	SSW	SW	WSW	W	WNW	NW	NNW	Total
calm	•	•	•	•	•	•	•	•	•	•	•	•	•	•	•	•	•
1 - 2 sec	•	•	•	•	•	•	•	•	•	•	•	•	•	•	•	•	•
2 - 4 sec	•	•	•	•	•	•	•	•	•	•	•	•	•	•	•	•	•
4 - 6 sec	•	•	•	•	•	•	•	•	•	0.01	•	•	•	•	0.01	•	0.02
6 - 8 sec	•	•	•	•	•	•	•	•	0.01	0.03	0.02	0.03	0.03	0.09	0.28	•	0.51
8 - 10 sec	•	•	•	•	•	•	•	•	•	0.03	0.03	0.25	0.35	1.73	3.26	•	5.65
10 - 12 sec	•	•	•	•	•	•	•	•	•	•	0.05	0.35	1.14	13.73	8.99	•	24.25
12 - 14 sec	•	•	•	•	•	•	•	•	0.06	0.21	0.18	0.39	3.25	25.07	5.65	•	34.81
14 - 16 sec	•	•	•	•	•	•	•	•	0.30	0.51	0.31	0.32	1.68	17.46	2.72	•	23.29
18 - 20 sec	•	•	•	•	•	•	•	0.02	0.40	0.22	0.03	0.15	0.64	6.70	0.70	•	8.87
22 - 24 sec	•	•	•	•	•	•	•	•	0.06	0.07	0.02	•	0.18	2.08	0.18	•	2.60
Total	•	•	•	•	•	•	•	0.02	0.83	1.08	0.66	1.50	7.27	66.86	21.78	•	100.00

Even Keel Wind Project Climatological Wind Rose for March: 1979 - 2015



Joint Frequency Distribution Table

	N	NNE	NE	ENE	E	ESE	SE	SSE	S	SSW	SW	WSW	W	WNW	NW	NNW	Total
calm	0.01	0.01	0.02	0.02	0.01	0.01	0.02	0.01	0.02	0.01	0.01	0.01	0.02	0.02	•	0.02	0.25
0 - 5 kts	0.59	0.49	0.39	0.38	0.38	0.53	0.37	0.46	0.53	0.75	0.60	0.59	0.83	0.99	1.01	0.74	9.62
5 - 10 kts	3.19	1.42	0.49	0.41	0.40	0.48	1.13	1.22	1.24	1.04	1.15	1.38	1.97	2.90	4.30	4.55	27.27
10 - 15 kts	3.73	0.30	0.12	0.09	0.07	0.14	0.72	1.17	0.97	0.60	0.40	0.43	0.74	2.74	7.94	10.55	30.70
15 - 20 kts	0.92	0.01	•	•	0.05	0.05	0.30	0.78	0.55	0.29	0.13	0.25	0.30	0.89	8.14	9.33	21.98
20 - 25 kts	0.03	•	•	•	•	•	0.18	0.35	0.25	0.14	0.08	0.01	0.03	0.09	3.80	3.80	8.77
25 - 30 kts	•	•	•	•	•	•	0.09	0.12	0.09	0.01	•	•	•	0.01	0.51	0.41	1.24
30 - 35 kts	•	•	•	•	•	•	0.02	0.10	0.02	•	•	•	•	•	0.01	•	0.16
35 - 40 kts	•	•	•	•	•	•	•	•	•	•	•	•	•	•	•	•	•
40 - 45 kts	•	•	•	•	•	•	•	•	•	•	•	•	•	•	•	•	•
45 - 50 kts	•	•	•	•	•	•	•	•	•	•	•	•	•	•	•	•	•
Total	8.47	2.23	1.02	0.91	0.91	1.21	2.84	4.21	3.68	2.83	2.37	2.67	3.89	7.64	25.71	29.40	100.00