

## Even Keel Wind Project - May

Latitude: 35.53 N Longitude: 121.68 W

### Weather Days

Wave Height > 6.0 ft Mean: 16.7 days Range: 12.5 - 20.9 days p50:23.5 days p75:21 days p90:17 days

Wave Height > 7.0 ft Mean: 12.9 days Range: 8.3 - 17.5 days p50:18.5 days p75:14.5 days p90:11.5 days

Wave Height > 8.0 ft Mean: 9.0 days Range: 4.9 - 13.0 days p50:12.5 days p75:10.5 days p90:8 days

Wind Speed > 10.0 knots Mean: 23.7 days Range: 20.9 - 26.6 days p50:24.5 days p75:22.5 days p90:20 days

Wind Speed > 15.0 knots Mean: 15.9 days Range: 12.4 - 19.4 days p50:17 days p75:13.5 days p90:11.5 days

Wind Speed > 20.0 knots Mean: 6.5 days Range: 3.4 - 9.6 days p50:6.5 days p75:3.5 days p90:3.5 days

### Working Window

Wave Height < 6.0 ft  
A 1 day or longer window will statistically occur 2.2 times per month  
A 2 day or longer window will statistically occur 0.9 times per month  
A 3 day or longer window will statistically occur 0.5 times per month

Wave Height < 7.0 ft  
A 1 day or longer window will statistically occur 3.7 times per month  
A 2 day or longer window will statistically occur 2.0 times per month  
A 3 day or longer window will statistically occur 1.3 times per month

Wave Height < 8.0 ft  
A 1 day or longer window will statistically occur 4.5 times per month  
A 2 day or longer window will statistically occur 3.1 times per month  
A 3 day or longer window will statistically occur 2.1 times per month

### Waves

Mean Height: 6 - 8 ft

The wave heights will occasionally reach 14 - 16 ft, but rarely higher.

Mean Period: 10 - 12 sec

The wave periods will occasionally reach 22 - 24 sec, but rarely longer.

Principle Direction, from: NW

WindSea/Swell: 13% / 87%

### Winds

Mean Speed: 15 - 20 kts

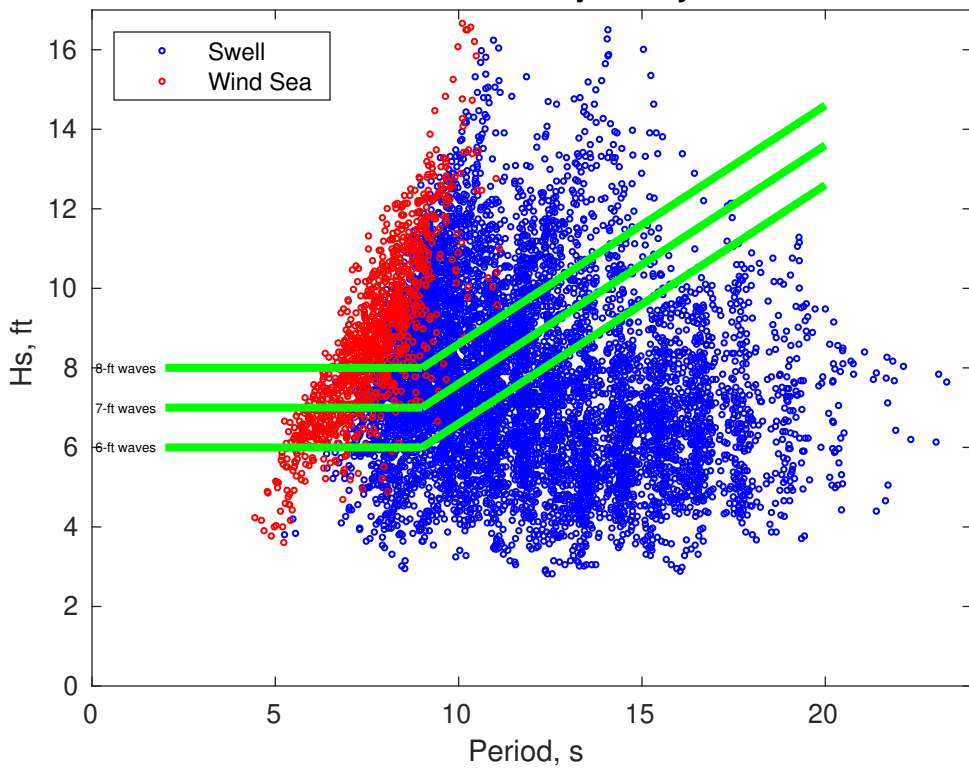
The winds will occasionally reach 25 - 30 kts, but rarely greater.

Principle Direction, from: NW

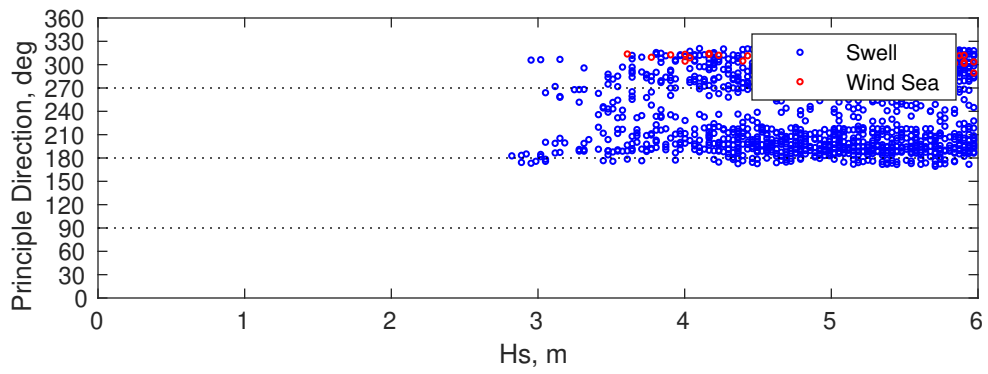
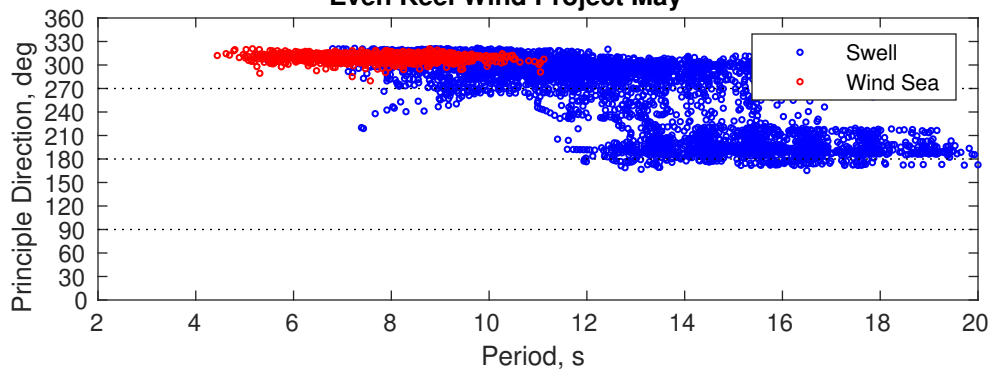
### Severe Storms

Severe storms with gale force winds and extreme waves are not expected during this month.

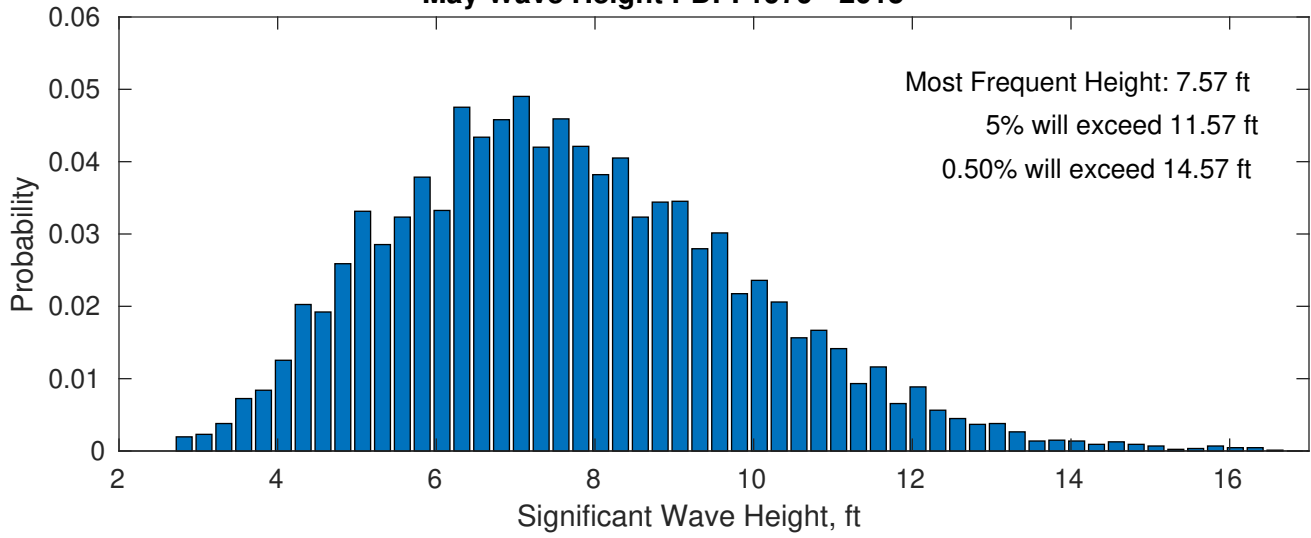
### Even Keel Wind Project May



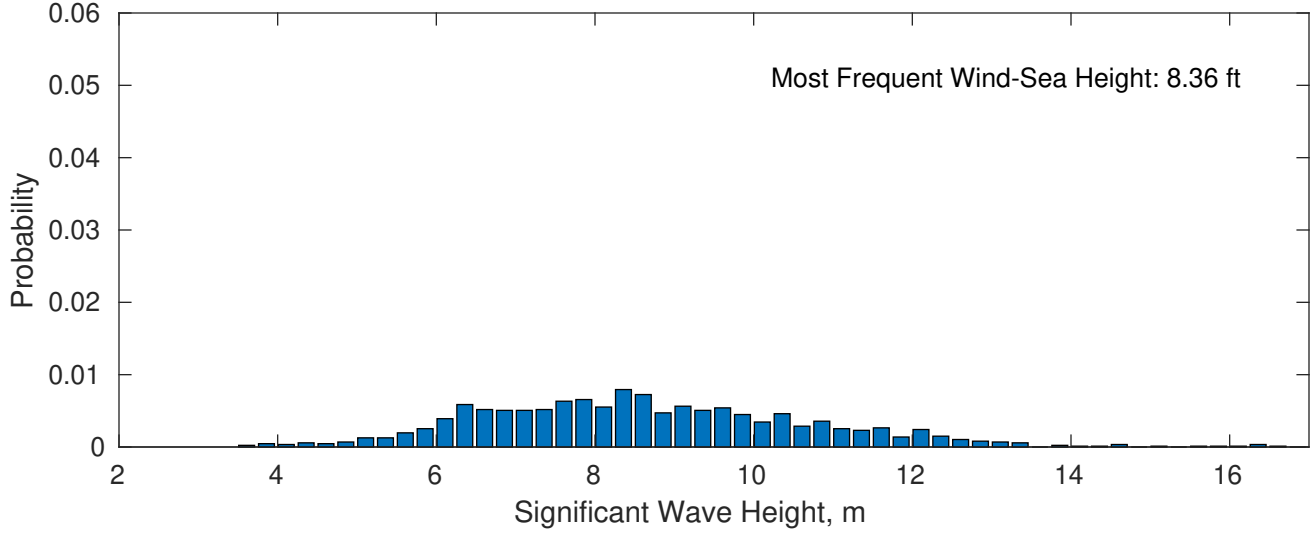
### Even Keel Wind Project May



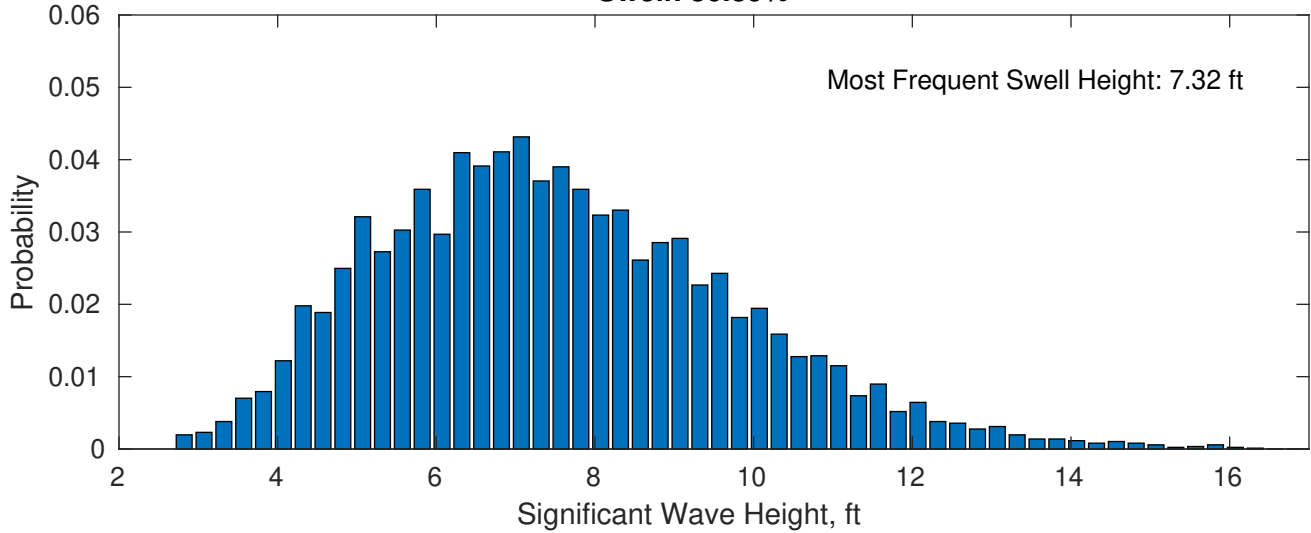
**May Wave Height PDF: 1979 - 2015**



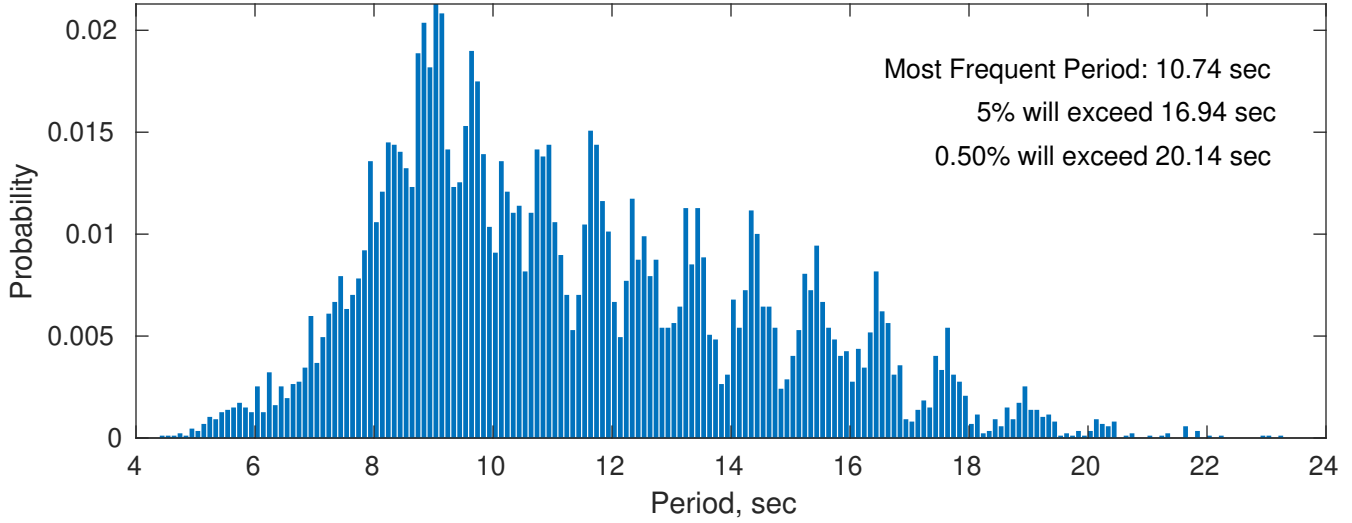
**Wind-Sea: 13.11%**



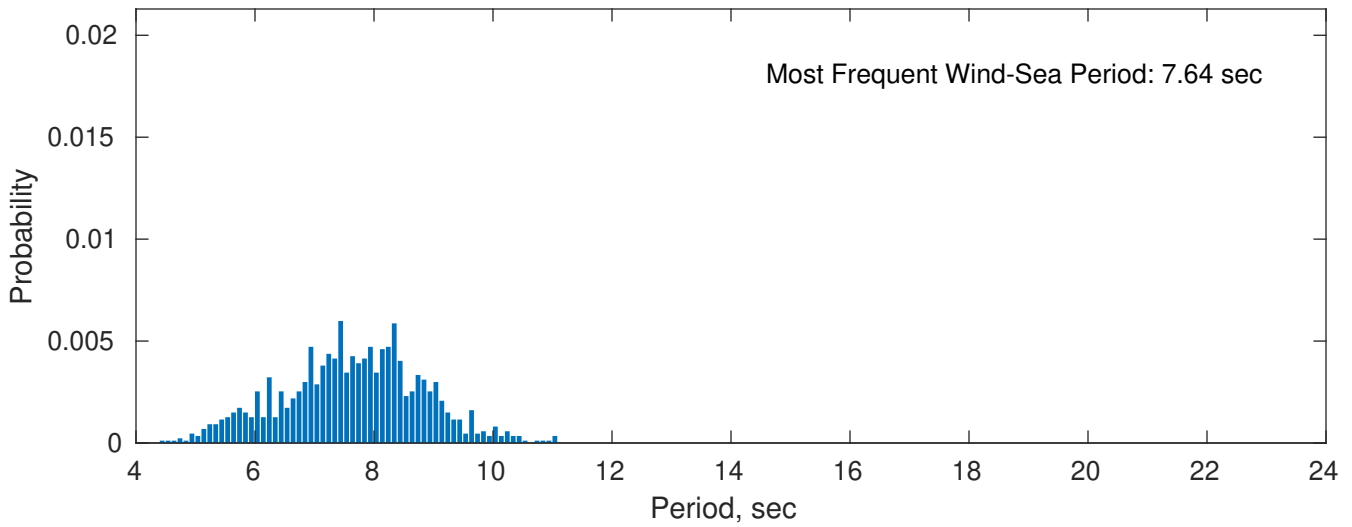
**Swell: 86.89%**



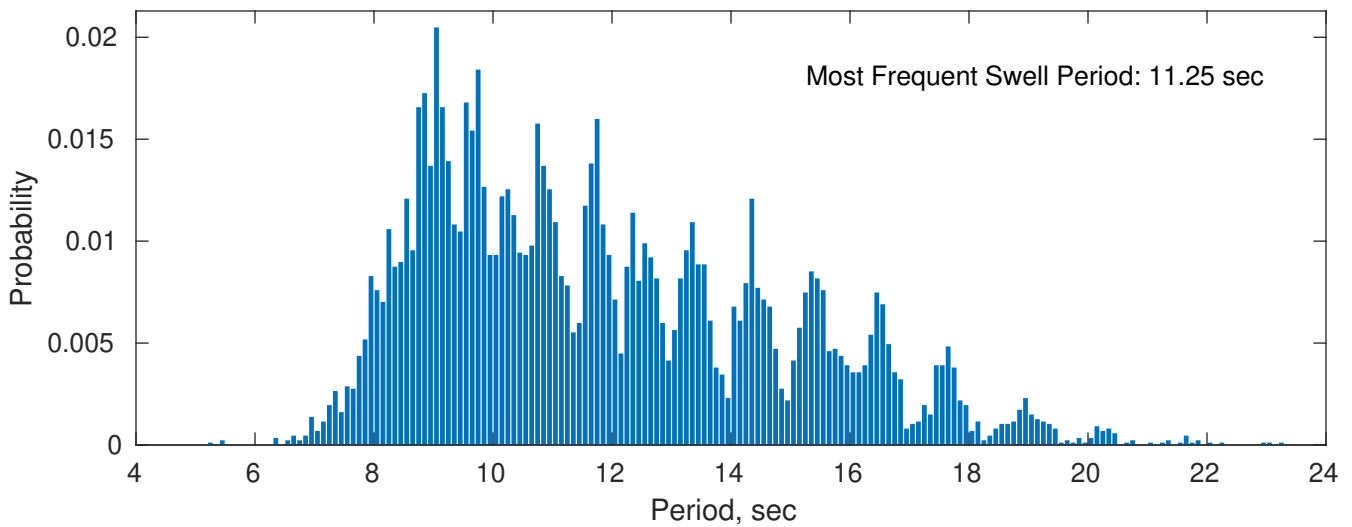
**May Peak Wave Period PDF: 1979 - 2015**



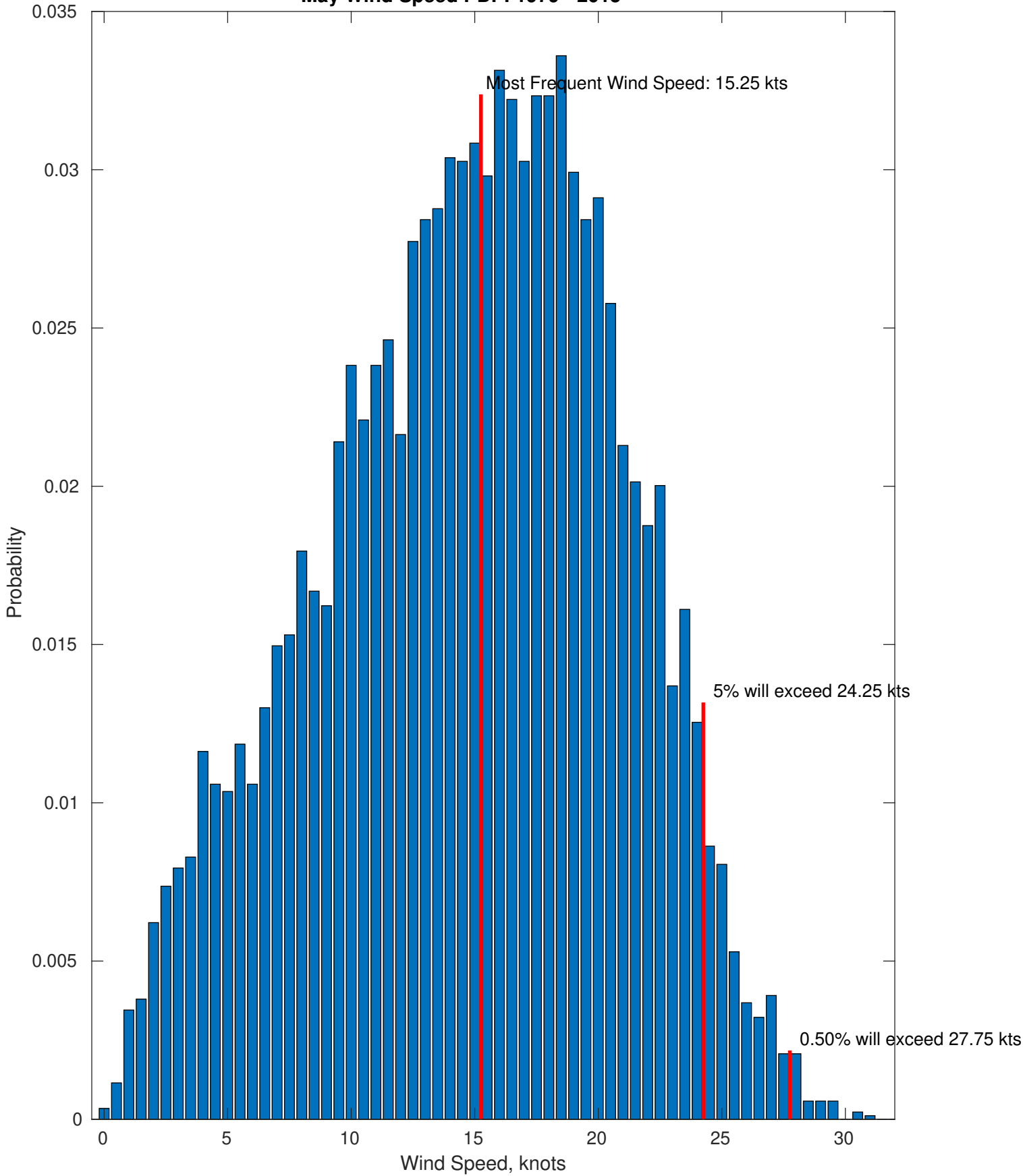
**Wind-Sea: 13.11%**



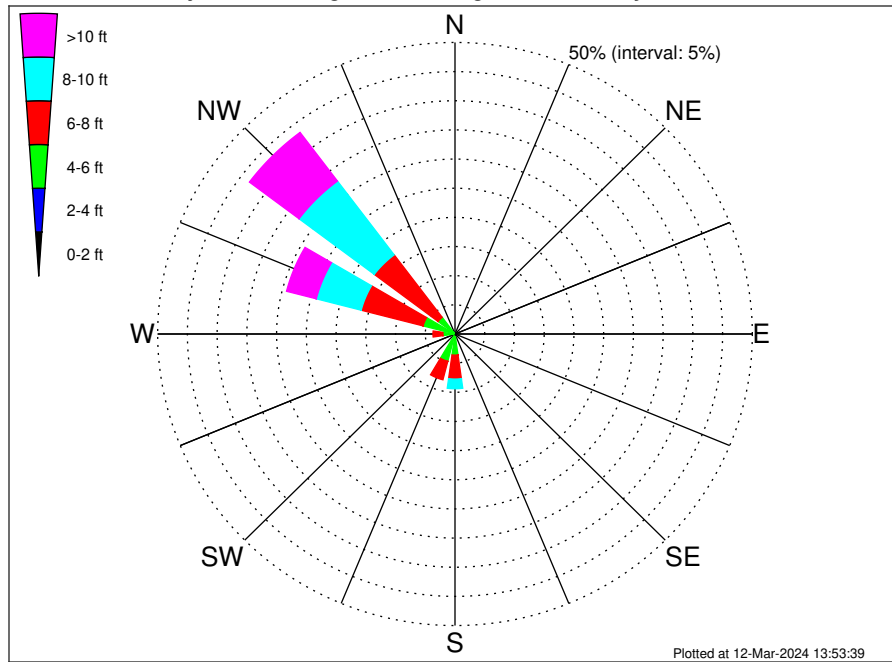
**Swell: 86.89%**



May Wind Speed PDF: 1979 - 2015



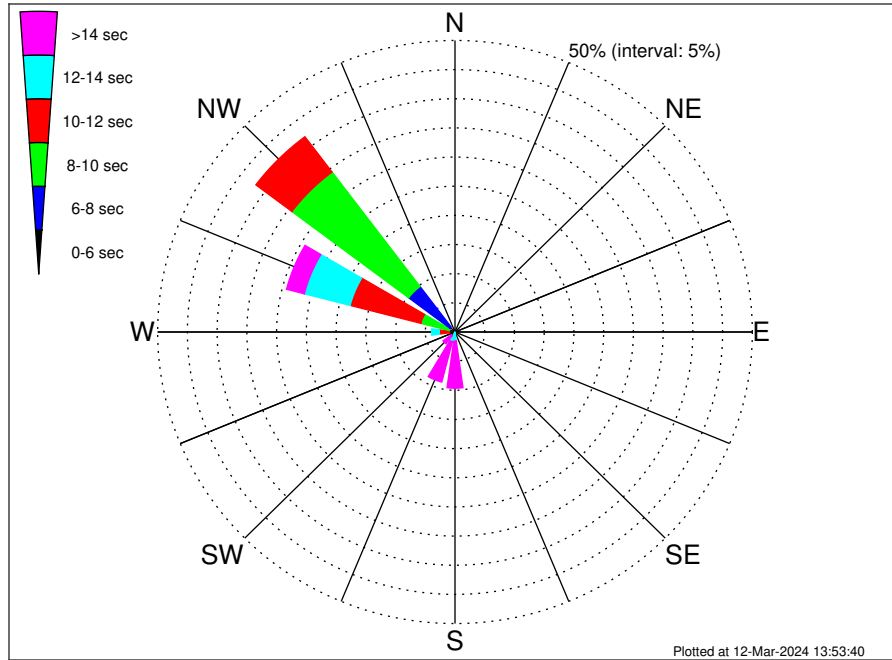
Even Keel Wind Project Climatological WaveHeight Rose for May: 1979 - 2015



Joint Frequency Distribution Table

	N	NNE	NE	ENE	E	ESE	SE	SSE	S	SSW	SW	WSW	W	WNW	NW	NNW	Total
calm	•	•	•	•	•	•	•	•	•	•	•	•	•	•	•	•	•
1 - 2 ft	•	•	•	•	•	•	•	•	•	•	•	•	•	•	•	•	•
2 - 4 ft	•	•	•	•	•	•	•	•	0.49	0.40	0.22	0.16	0.23	0.29	0.23	•	2.03
4 - 6 ft	•	•	•	•	•	•	•	•	3.13	4.43	1.19	0.61	1.81	5.25	3.35	•	19.76
6 - 8 ft	•	•	•	•	•	•	•	0.02	4.11	3.28	1.00	0.66	1.67	10.76	13.42	•	34.91
8 - 10 ft	•	•	•	•	•	•	•	•	1.66	0.59	0.10	0.17	0.79	7.80	15.85	•	26.96
10 - 12 ft	•	•	•	•	•	•	•	•	0.23	0.16	0.01	0.02	0.21	3.79	7.78	•	12.20
12 - 14 ft	•	•	•	•	•	•	•	•	0.02	0.01	•	•	0.06	1.27	2.03	•	3.38
14 - 16 ft	•	•	•	•	•	•	•	•	•	•	•	•	•	0.12	0.52	•	0.63
16 - 18 ft	•	•	•	•	•	•	•	•	•	•	•	•	•	•	0.13	•	0.13
> 18 ft	•	•	•	•	•	•	•	•	•	•	•	•	•	•	•	•	•
Total	•	•	•	•	•	•	•	0.02	9.64	8.87	2.52	1.62	4.76	29.26	43.29	•	100.00

Even Keel Wind Project Climatological WavePeriod Rose for May: 1979 - 2015

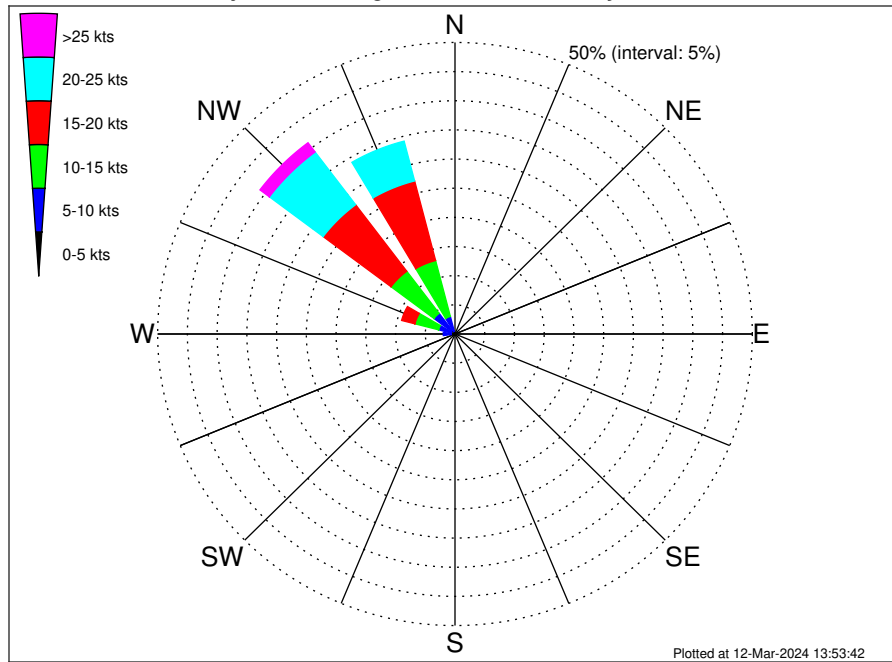


Joint Frequency Distribution Table

	N	NNE	NE	ENE	E	ESE	SE	SSE	S	SSW	SW	WSW	W	WNW	NW	NNW	Total
calm	•	•	•	•	•	•	•	•	•	•	•	•	•	•	•	•	•
1 - 2 sec	•	•	•	•	•	•	•	•	•	•	•	•	•	•	•	•	•
2 - 4 sec	•	•	•	•	•	•	•	•	•	•	•	•	•	•	•	•	•
4 - 6 sec	•	•	•	•	•	•	•	•	•	•	•	•	•	0.13	1.07	•	1.20
6 - 8 sec	•	•	•	•	•	•	•	•	•	•	0.02	0.02	0.03	0.92	8.70	•	9.70
8 - 10 sec	•	•	•	•	•	•	•	•	•	•	•	0.17	0.92	4.89	24.58	•	30.56
10 - 12 sec	•	•	•	•	•	•	•	•	0.08	0.09	0.13	0.28	1.68	12.28	7.58	•	22.12
12 - 14 sec	•	•	•	•	•	•	•	0.01	1.48	1.63	0.66	0.67	1.30	7.96	1.00	•	14.72
14 - 16 sec	•	•	•	•	•	•	•	•	3.71	3.86	0.86	0.44	0.71	2.38	0.26	•	12.22
18 - 20 sec	•	•	•	•	•	•	•	0.01	3.10	2.45	0.74	0.05	0.12	0.59	0.07	•	7.11
22 - 24 sec	•	•	•	•	•	•	•	•	1.28	0.84	0.12	•	•	0.12	0.02	•	2.37
Total	•	•	•	•	•	•	•	0.02	9.64	8.87	2.52	1.62	4.76	29.26	43.29	•	100.00



Even Keel Wind Project Climatological Wind Rose for May: 1979 - 2015



Joint Frequency Distribution Table

	N	NNE	NE	ENE	E	ESE	SE	SSE	S	SSW	SW	WSW	W	WNW	NW	NNW	Total
calm	0.02	0.02	•	•	•	•	•	•	0.02	0.01	0.01	0.02	0.01	•	0.01	0.01	0.15
0 - 5 kts	0.22	0.20	0.08	0.03	0.13	0.17	0.24	0.44	0.46	0.45	0.47	0.40	0.63	0.67	0.85	0.48	5.93
5 - 10 kts	0.62	0.16	0.05	0.02	0.13	0.20	0.60	0.64	0.55	0.69	0.64	0.83	1.33	2.19	3.57	2.61	14.83
10 - 15 kts	0.76	•	•	•	0.02	0.09	0.28	0.39	0.26	0.20	0.13	0.18	0.78	4.11	9.04	9.91	26.16
15 - 20 kts	0.21	•	•	•	•	0.03	0.13	0.10	0.05	0.01	•	•	0.06	2.31	14.29	14.10	31.29
20 - 25 kts	0.02	•	•	•	•	0.02	0.01	0.01	0.01	•	•	•	0.01	0.14	11.32	7.05	18.61
25 - 30 kts	•	•	•	•	•	•	•	•	•	•	•	•	•	•	1.97	1.04	3.00
30 - 35 kts	•	•	•	•	•	•	•	•	•	•	•	•	•	•	0.01	0.02	0.03
35 - 40 kts	•	•	•	•	•	•	•	•	•	•	•	•	•	•	•	•	•
40 - 45 kts	•	•	•	•	•	•	•	•	•	•	•	•	•	•	•	•	•
45 - 50 kts	•	•	•	•	•	•	•	•	•	•	•	•	•	•	•	•	•
Total	1.85	0.38	0.13	0.06	0.28	0.52	1.25	1.59	1.36	1.36	1.25	1.44	2.83	9.41	41.07	35.22	100.00