

Flower Gardens NMS - July

Weather Days

Wave Height > 6.0 ft Mean: 0.9 days Range: 0.0 - 2.2 days

Wave Height > 7.0 ft Mean: 0.6 days Range: 0.0 - 1.4 days

Wave Height > 8.0 ft Mean: 0.4 days Range: 0.0 - 1.1 days

Working Window Probability

Wave Height < 6.0 ft 3 days or longer: 84%

5 days or longer: 73%

7 days or longer: 66%

Wave Height < 7.0 ft 3 days or longer: 92%

5 days or longer: 79%

7 days or longer: 77%

Wave Height < 8.0 ft 3 days or longer: 91%

5 days or longer: 81%

7 days or longer: 79%

Waves

Mean Height: 2 - 4 ft

The wave heights will occasionally reach 8 - 10 ft, but rarely higher.

Mean Period: 4 - 6 sec

The wave periods will occasionally reach 10 - 12 sec, but rarely longer.

Principle Direction, from: SE

WindSea/Swell: 18% / 82%

Winds

Mean Speed: 5 - 10 kts

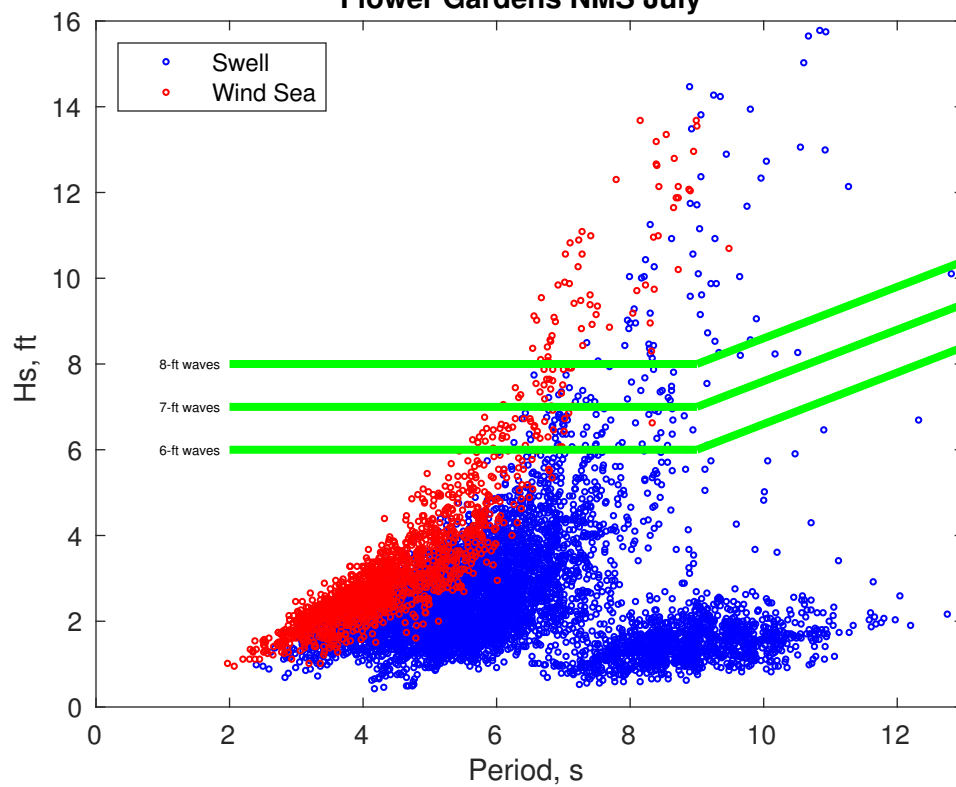
The winds will occasionally reach 20 - 25 kts, but rarely greater.

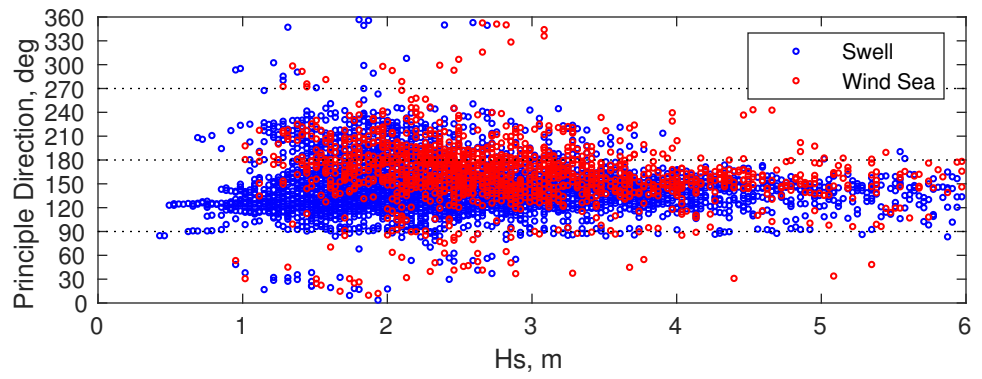
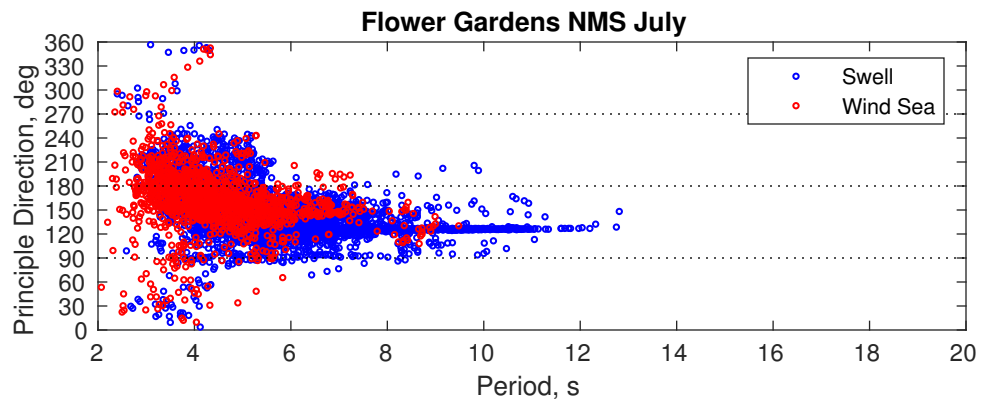
Principle Direction, from: SSE

Severe Storms

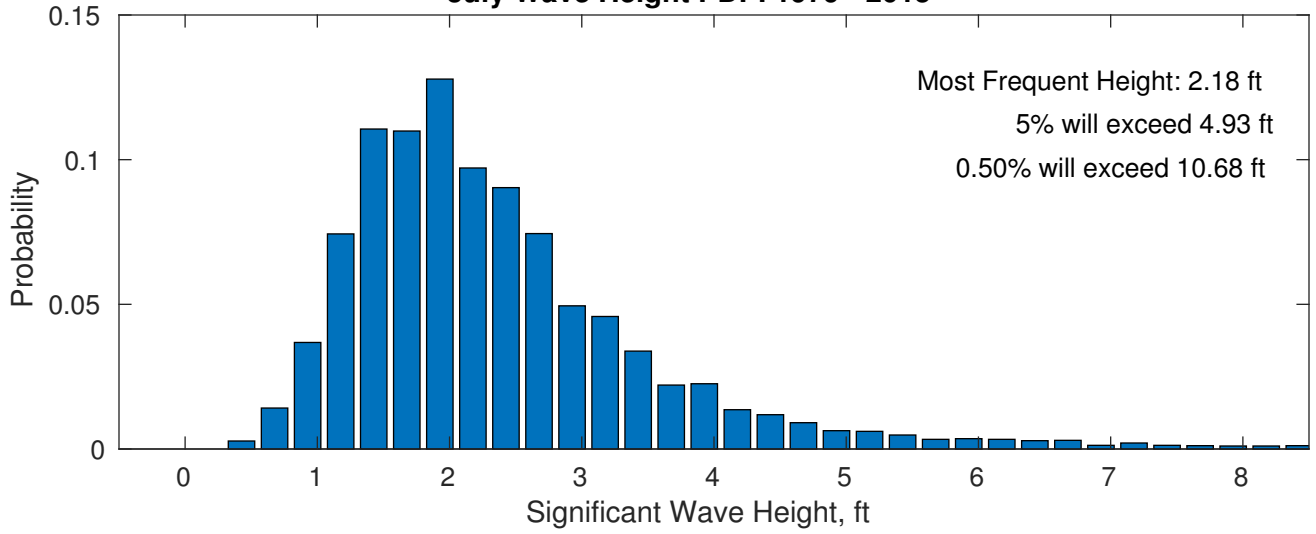
Severe storms with gale force winds and extreme waves are not expected.

Flower Gardens NMS July

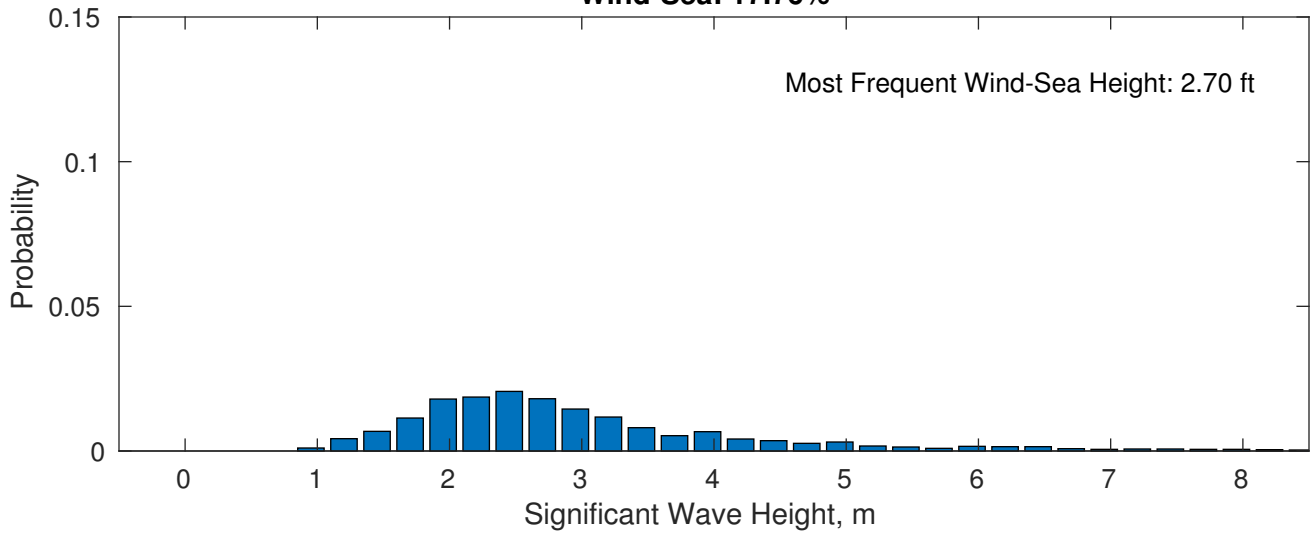




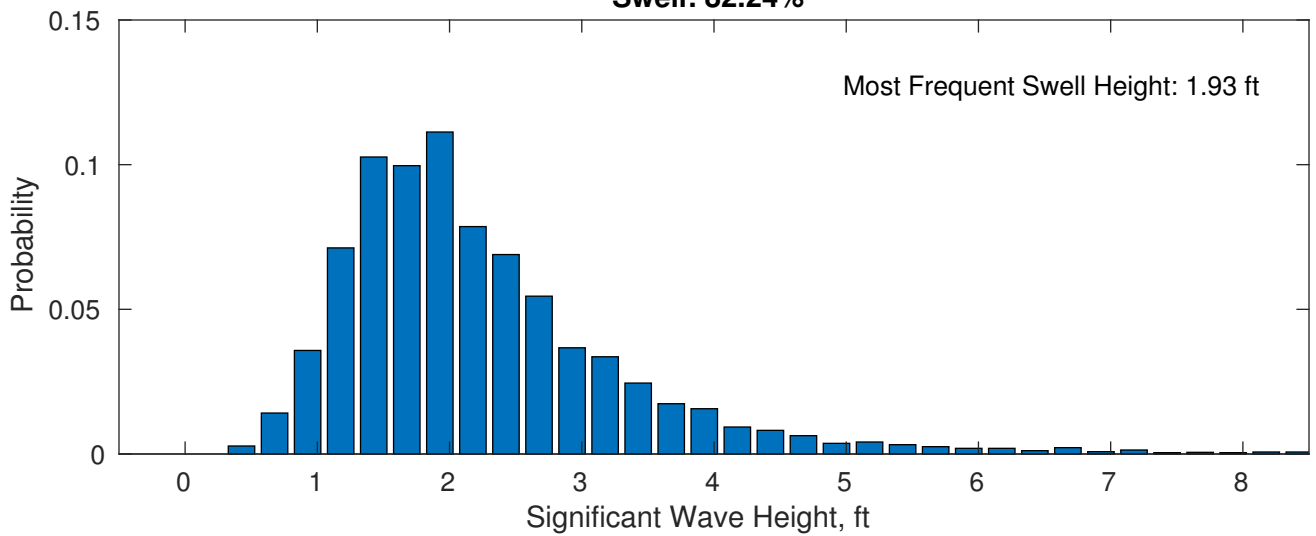
July Wave Height PDF: 1979 - 2015



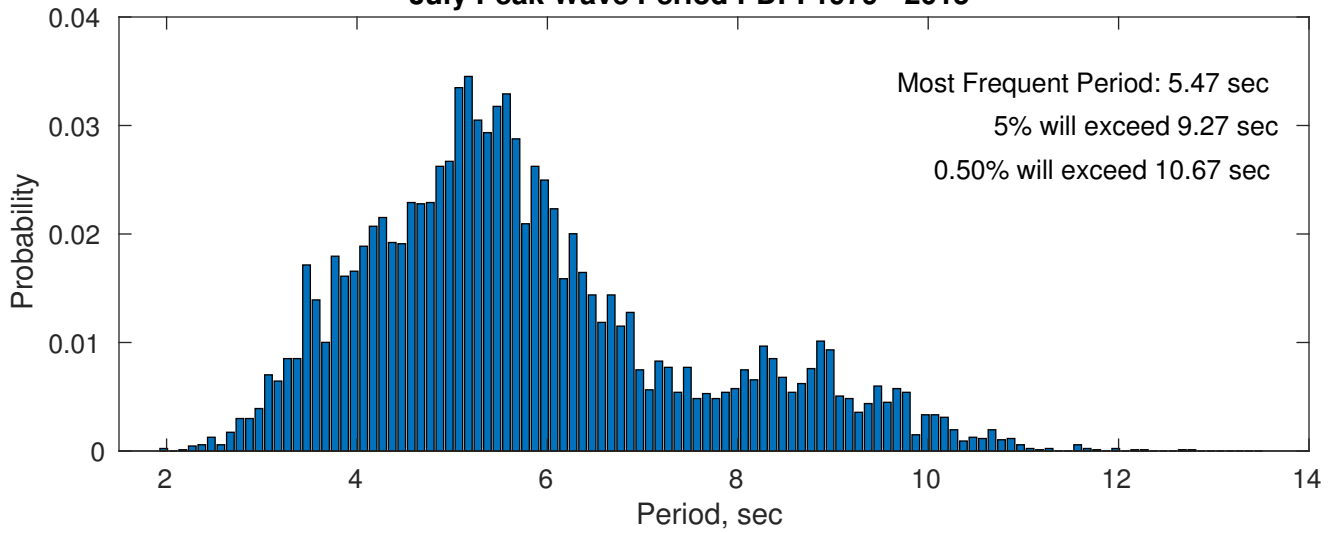
Wind-Sea: 17.76%



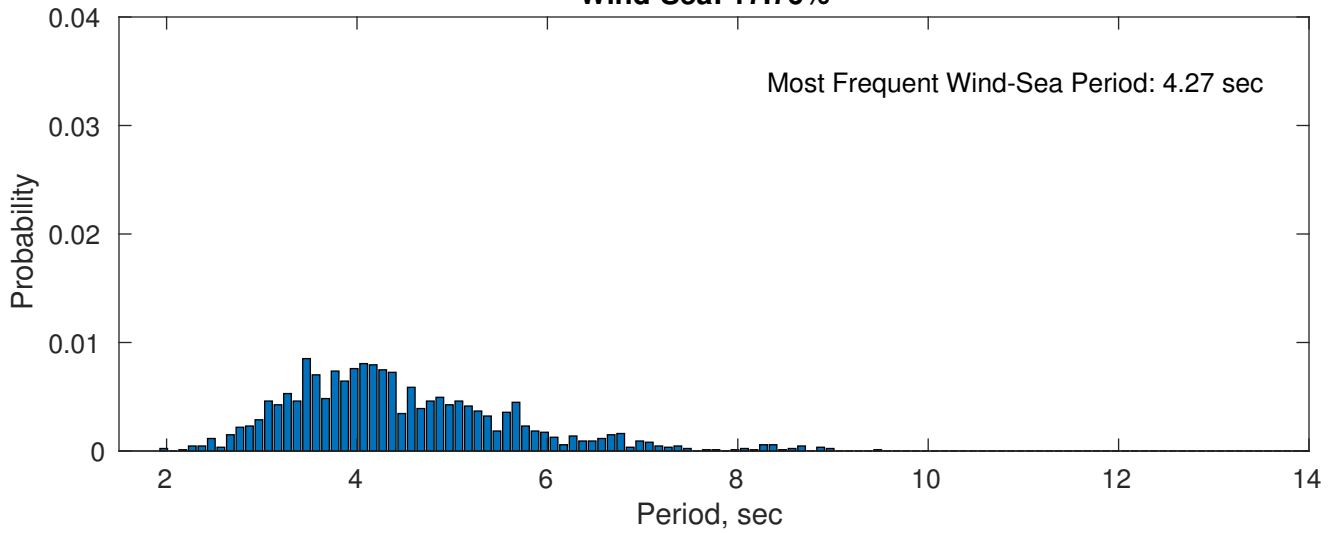
Swell: 82.24%



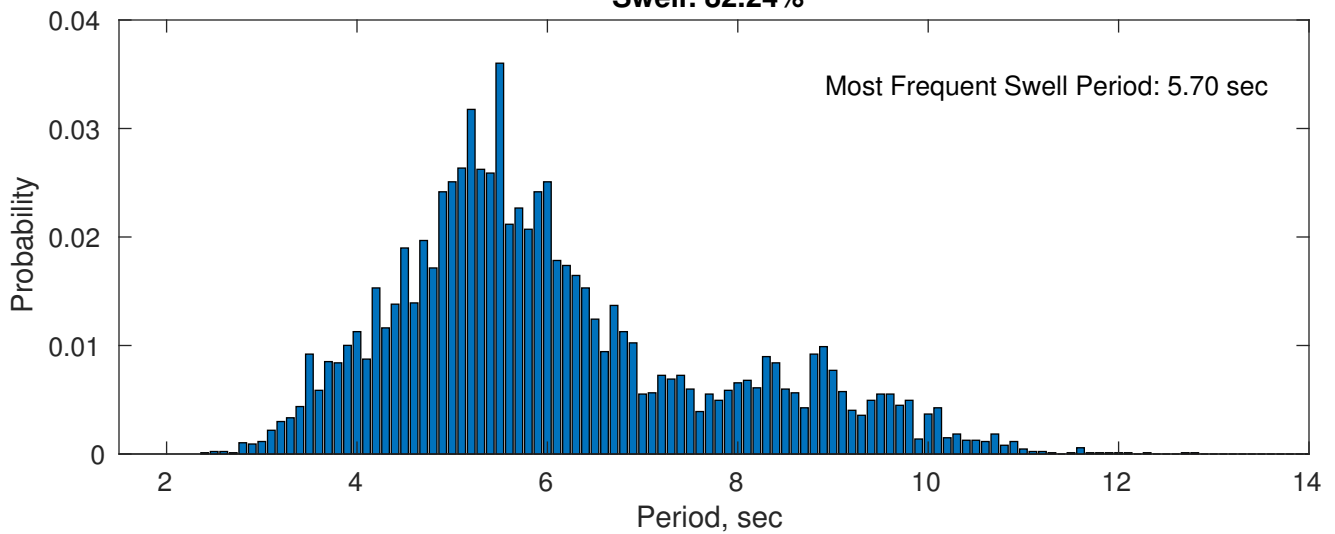
July Peak Wave Period PDF: 1979 - 2015



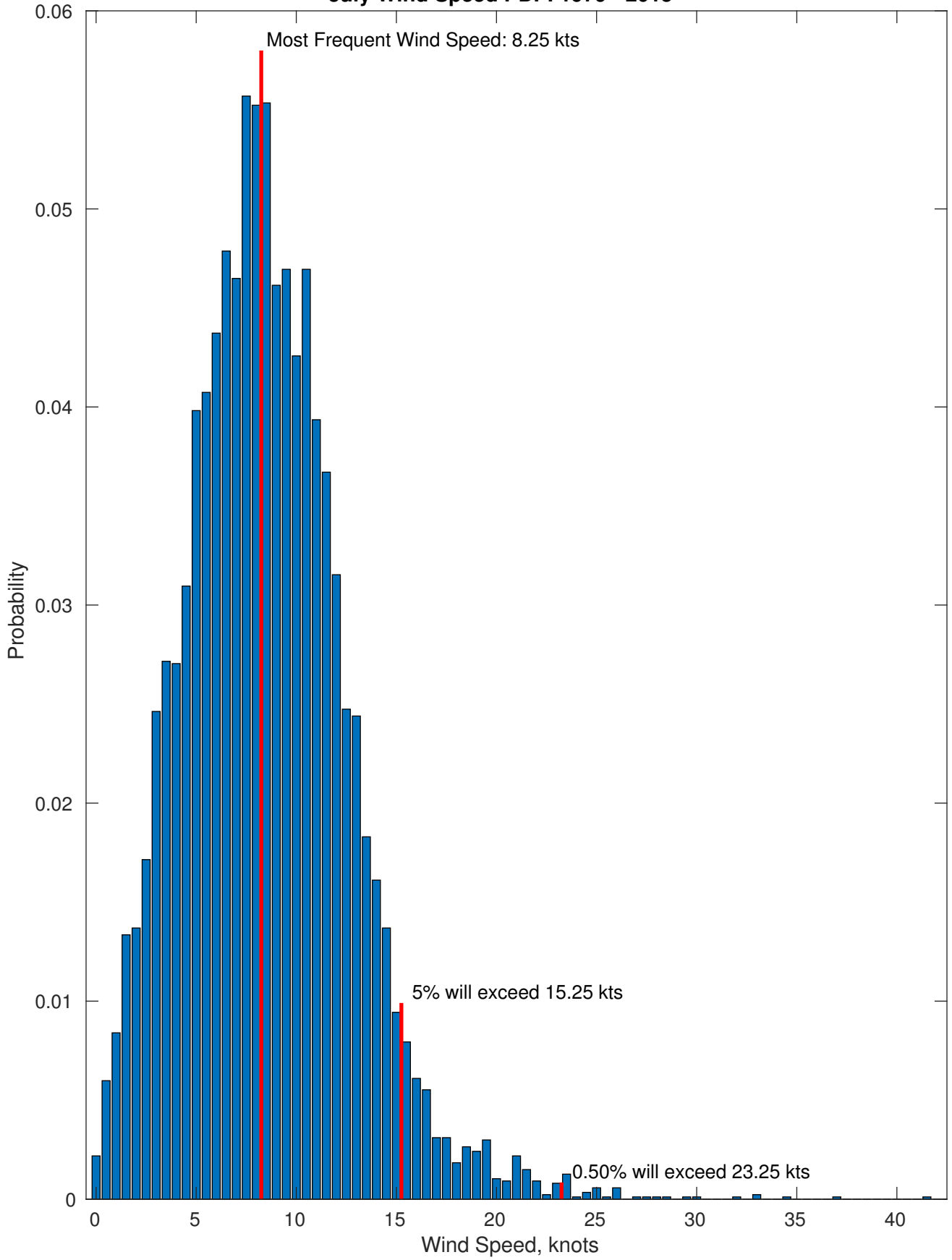
Wind-Sea: 17.76%



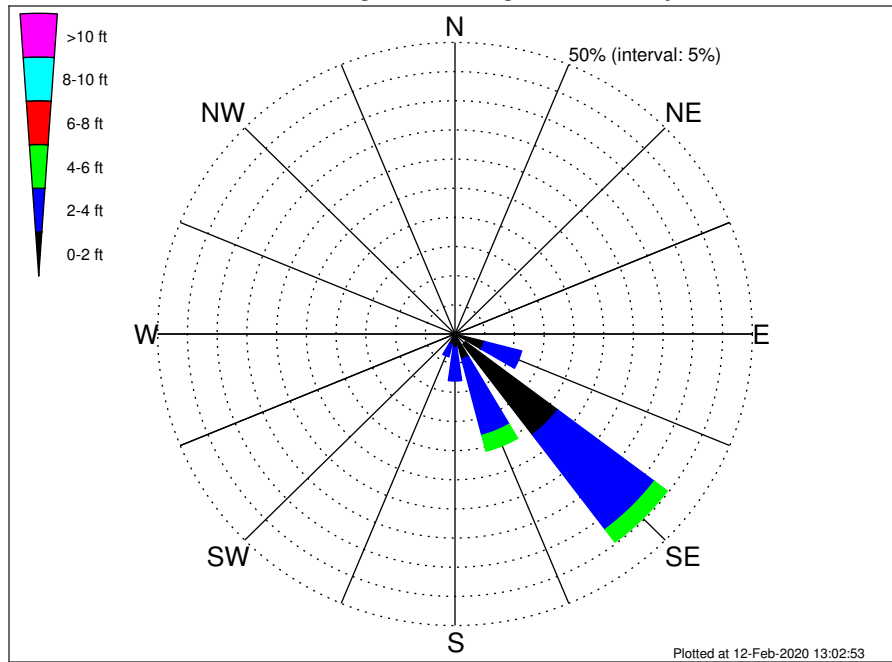
Swell: 82.24%



July Wind Speed PDF: 1979 - 2015



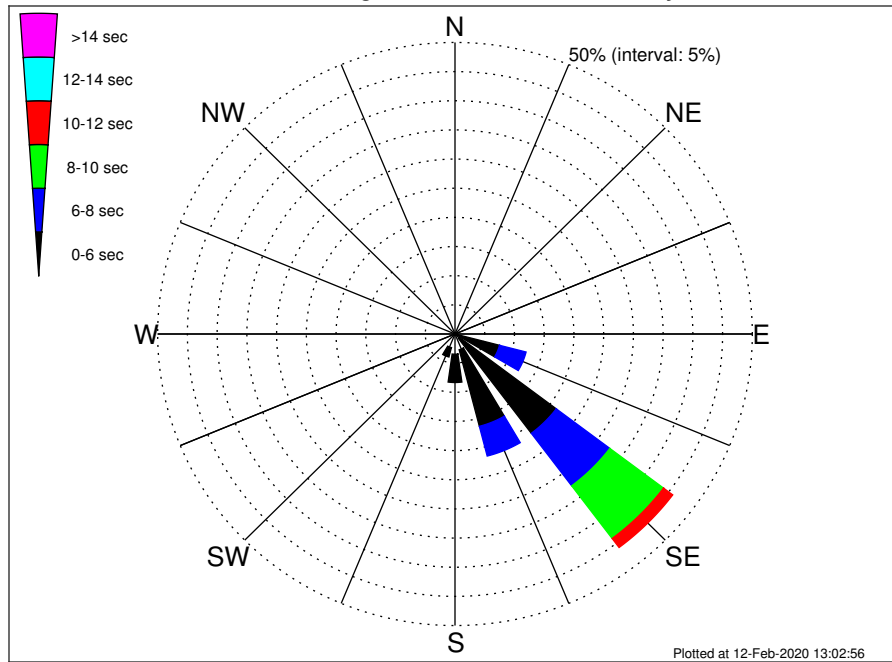
Flower Gardens NMS Climatological WaveHeight Rose for July: 1979 - 2015



Joint Frequency Distribution Table

	N	NNE	NE	ENE	E	ESE	SE	SSE	S	SSW	SW	WSW	W	WNW	NW	NNW	Total
calm	•	•	0.02	•	0.10	0.29	2.20	0.01	•	0.05	0.02	•	•	0.02	•	•	2.72
1 - 2 ft	0.07	0.26	0.05	0.02	0.53	4.80	19.44	4.42	2.32	1.82	1.17	0.20	0.09	0.10	•	0.01	35.30
2 - 4 ft	0.07	0.03	0.23	0.15	1.20	6.49	20.33	13.52	5.74	2.17	1.15	0.32	0.02	0.03	0.03	0.03	51.54
4 - 6 ft	•	0.01	0.02	•	0.30	0.94	2.74	2.81	0.36	0.03	•	0.03	•	•	•	•	7.25
6 - 8 ft	•	•	•	0.05	0.05	0.18	0.74	0.63	0.08	0.05	•	•	•	•	•	•	1.77
8 - 10 ft	•	•	•	•	0.03	0.03	0.21	0.32	0.05	0.07	•	•	•	•	•	•	0.71
10 - 12 ft	•	•	•	•	•	0.06	0.14	0.09	0.03	0.02	•	•	•	•	•	•	0.35
12 - 14 ft	•	•	•	•	•	0.07	0.10	0.10	•	•	•	•	•	•	•	•	0.28
14 - 16 ft	•	•	•	•	•	0.03	•	0.05	•	•	•	•	•	•	•	•	0.08
16 - 18 ft	•	•	•	•	•	•	•	•	•	•	•	•	•	•	•	•	•
> 18 ft	•	•	•	•	•	•	•	•	•	•	•	•	•	•	•	•	•
Total	0.14	0.31	0.32	0.22	2.21	12.90	45.89	21.96	8.58	4.21	2.35	0.55	0.12	0.16	0.03	0.05	100.00

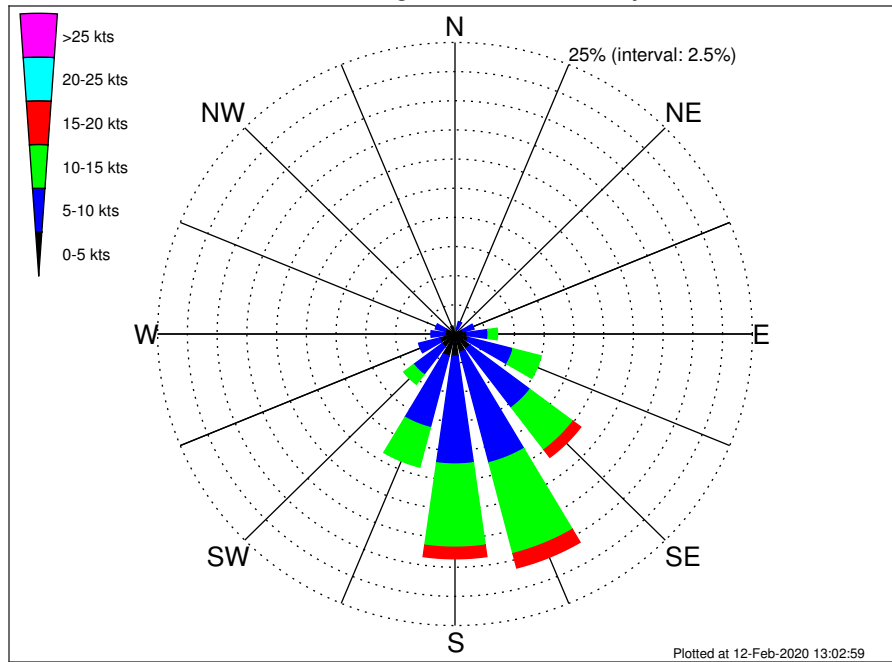
Flower Gardens NMS Climatological WavePeriod Rose for July: 1979 - 2015



Joint Frequency Distribution Table

	N	NNE	NE	ENE	E	ESE	SE	SSE	S	SSW	SW	WSW	W	WNW	NW	NNW	Total
calm	•	•	•	•	•	•	•	•	•	•	•	•	•	•	•	•	•
1 - 2 sec	•	0.01	•	•	•	•	•	•	•	•	•	•	•	•	•	•	0.01
2 - 4 sec	0.05	0.28	0.22	0.10	0.33	0.29	0.96	2.78	3.46	2.42	1.19	0.30	0.12	0.16	0.03	0.02	12.70
4 - 6 sec	0.09	0.02	0.10	0.08	1.24	7.45	20.37	13.57	4.86	1.66	1.16	0.25	•	•	•	0.02	50.87
6 - 8 sec	•	•	•	0.03	0.45	4.61	11.28	5.27	0.26	0.08	•	•	•	•	•	•	21.99
8 - 10 sec	•	•	•	•	0.17	0.51	11.31	0.26	•	0.06	•	•	•	•	•	•	12.31
10 - 12 sec	•	•	•	•	0.01	0.05	1.93	0.06	•	•	•	•	•	•	•	•	2.05
12 - 14 sec	•	•	•	•	•	•	0.05	0.01	•	•	•	•	•	•	•	•	0.06
14 - 16 sec	•	•	•	•	•	•	•	•	•	•	•	•	•	•	•	•	•
18 - 20 sec	•	•	•	•	•	•	•	•	•	•	•	•	•	•	•	•	•
22 - 24 sec	•	•	•	•	•	•	•	•	•	•	•	•	•	•	•	•	•
Total	0.14	0.31	0.32	0.22	2.21	12.90	45.89	21.96	8.58	4.21	2.35	0.55	0.12	0.16	0.03	0.05	100.00

Flower Gardens NMS Climatological Wind Rose for July: 1979 - 2015



Joint Frequency Distribution Table

	N	NNE	NE	ENE	E	ESE	SE	SSE	S	SSW	SW	WSW	W	WNW	NW	NNW	Total
calm	0.05	0.02	0.08	0.07	0.07	0.05	0.07	0.03	0.05	0.06	0.05	0.05	0.05	0.07	0.01	0.06	0.82
0 - 5 kts	0.46	0.44	0.44	0.67	0.94	1.12	1.50	1.58	1.84	1.89	1.31	1.29	0.78	0.78	0.55	0.66	16.24
5 - 10 kts	0.45	0.64	0.62	0.92	1.77	3.89	6.33	9.79	9.26	6.34	2.99	1.83	1.20	0.86	0.48	0.41	47.80
10 - 15 kts	0.12	0.16	0.28	0.44	0.79	2.44	4.53	8.04	7.13	3.51	1.05	0.39	0.28	0.10	0.08	0.09	29.44
15 - 20 kts	•	0.05	0.08	0.10	0.21	0.53	0.82	1.28	0.99	0.33	0.06	0.05	0.02	•	•	•	4.51
20 - 25 kts	•	0.01	0.03	0.03	0.08	0.13	0.17	0.20	0.17	0.08	0.01	0.01	•	•	•	•	0.93
25 - 30 kts	•	•	•	•	•	0.06	0.02	0.02	0.03	0.05	•	•	•	•	•	•	0.18
30 - 35 kts	•	•	0.03	0.01	•	•	•	0.01	•	•	•	•	•	•	•	•	0.06
35 - 40 kts	•	•	•	•	•	•	0.01	•	•	•	•	•	•	•	•	•	0.01
40 - 45 kts	•	•	•	•	•	•	0.01	•	•	•	•	•	•	•	•	•	0.01
45 - 50 kts	•	•	•	•	•	•	•	•	•	•	•	•	•	•	•	•	•
Total	1.07	1.32	1.57	2.24	3.87	8.20	13.46	20.96	19.48	12.26	5.47	3.61	2.32	1.82	1.13	1.22	100.00