

GeoPartners Suriname Multibeam Survey - October

Latitude: 8.00 N Longitude: 54.50 W

Weather Days

Wave Height > 6.0 ft Mean: 3.7 days Range: 0.3 - 7.2 days p50:6.5 days p75:4 days p90:2.5 days

Wave Height > 7.0 ft Mean: 1.0 days Range: 0.0 - 2.6 days p50:2 days p75:1 days p90:1 days

Wave Height > 8.0 ft Mean: 0.3 days Range: 0.0 - 0.9 days p50:30 days p75:1 days p90:0.5 days

Wind Speed > 10.0 knots Mean: 23.7 days Range: 20.3 - 27.1 days p50:24.5 days p75:22 days p90:18.5 days

Wind Speed > 15.0 knots Mean: 4.4 days Range: 2.2 - 6.5 days p50:4.5 days p75:3 days p90:2 days

Wind Speed > 20.0 knots Mean: 0.1 days Range: 0.0 - 0.3 days p50:0.5 days p75:0.5 days p90:0.5 days

Working Window

Wave Height < 6.0 ft
A 1 day or longer window will statistically occur 3.5 times per month
A 2 day or longer window will statistically occur 3.0 times per month
A 3 day or longer window will statistically occur 2.5 times per month

Wave Height < 7.0 ft
A 1 day or longer window will statistically occur 2.1 times per month
A 2 day or longer window will statistically occur 2.0 times per month
A 3 day or longer window will statistically occur 1.9 times per month

Wave Height < 8.0 ft
A 1 day or longer window will statistically occur 1.5 times per month
A 2 day or longer window will statistically occur 1.4 times per month
A 3 day or longer window will statistically occur 1.3 times per month

Waves

Mean Height: 4 - 6 ft

The wave heights will occasionally reach 8 - 10 ft, but rarely higher.

Mean Period: 8 - 10 sec

The wave periods will occasionally reach 18 - 20 sec, but rarely longer.

Principle Direction, from: ENE

WindSea/Swell: 3% / 97%

Winds

Mean Speed: 10 - 15 kts

The winds will occasionally reach 15 - 20 kts, but rarely greater.

Principle Direction, from: E

Currents

Mean Speed: 0.50-0.75 kts

The currents will occasionally reach 1.75-2.00 kts, but rarely greater.

Principle Direction, to: W

Weather Days

Current Speed > 1.0 knots Mean: 9.4 days Range: 1.4 - 17.4 days p50:10 days p75:4 days p90:2 days

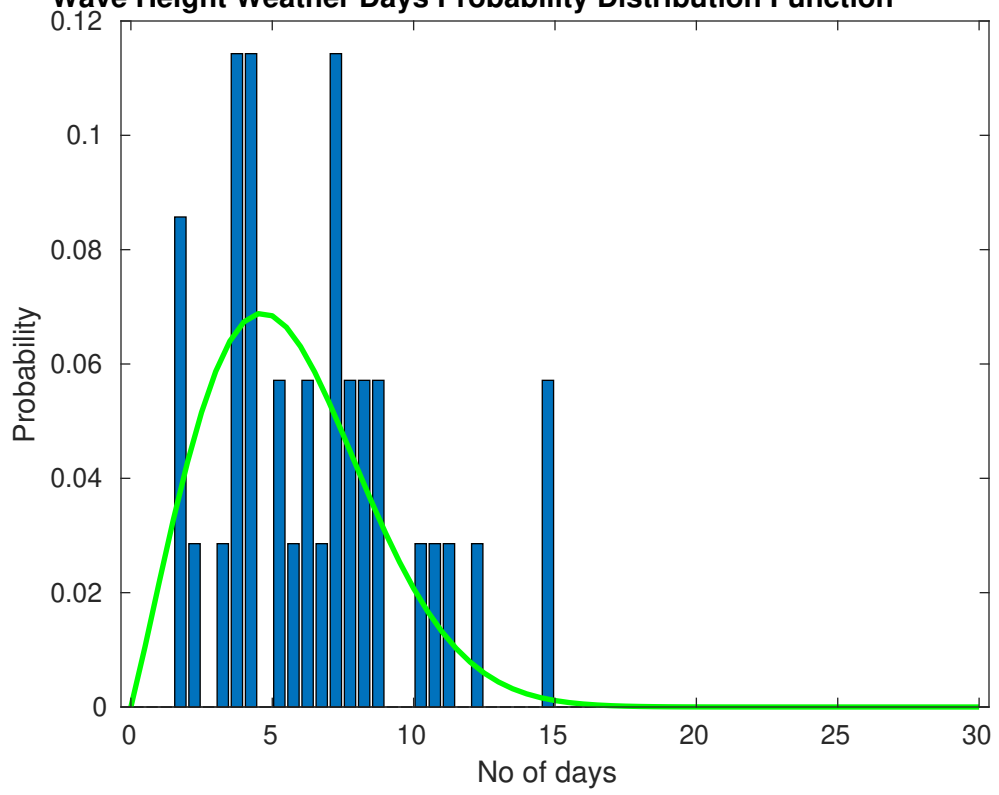
Current Speed > 1.5 knots Mean: 3.6 days Range: 0.0 - 9.6 days p50:2 days p75:1 days p90:1 days

Current Speed > 2.0 knots Mean: 1.2 days Range: 0.0 - 3.7 days p50:1 days p75:1 days p90:1 days

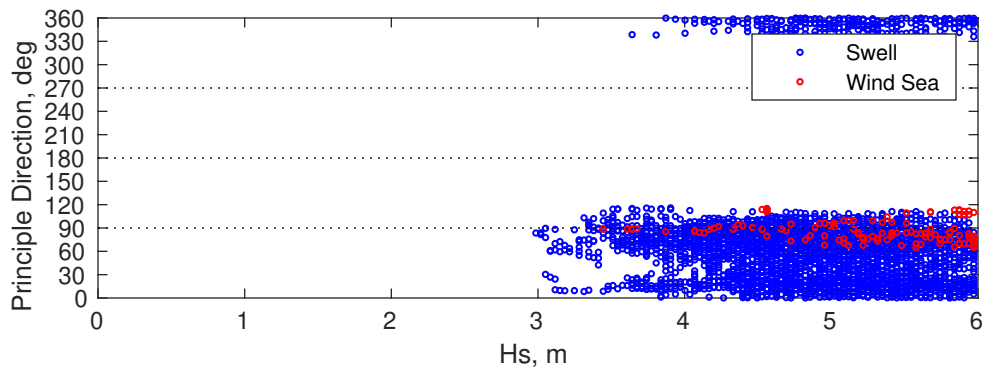
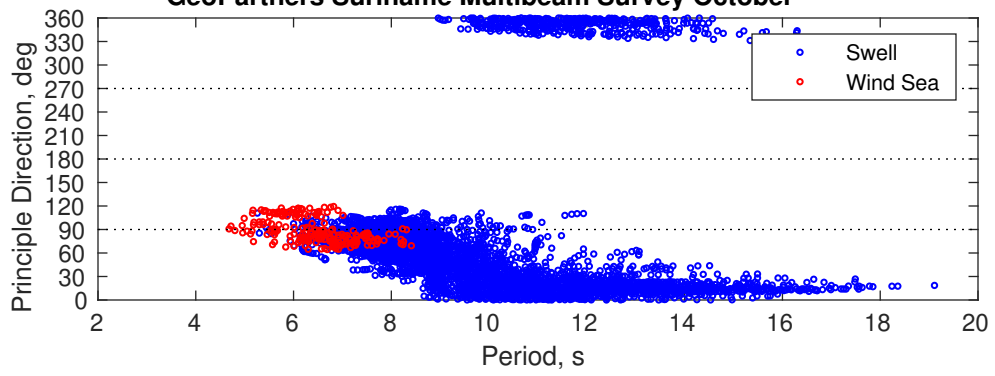
Severe Storms

Severe storms with gale force winds and extreme waves are not expected during this month.

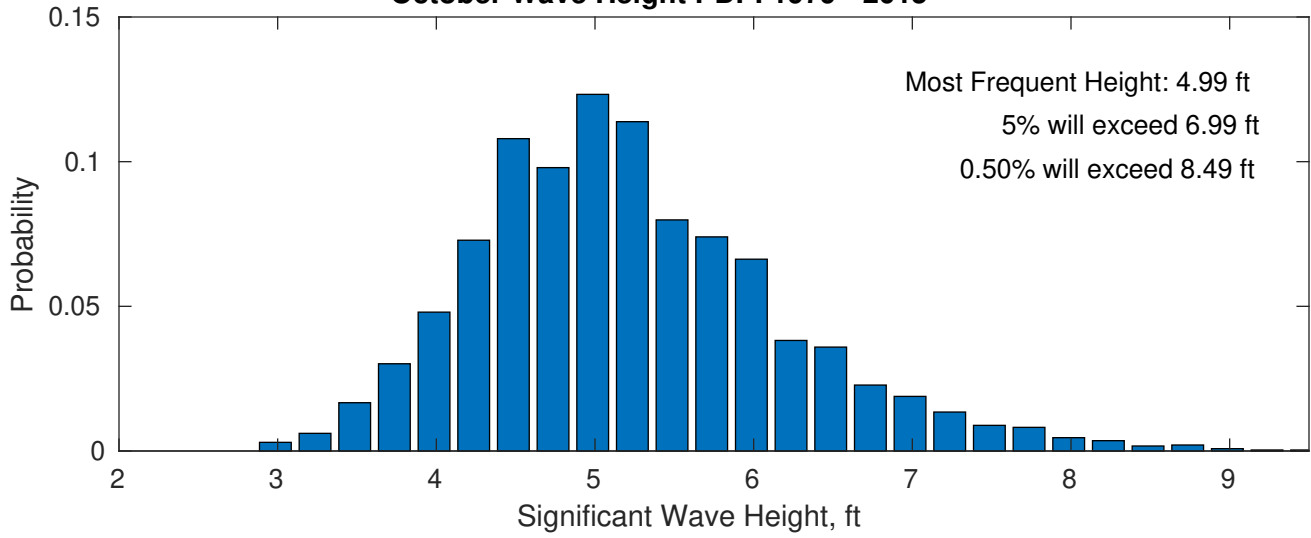
Wave Height Weather Days Probability Distribution Function



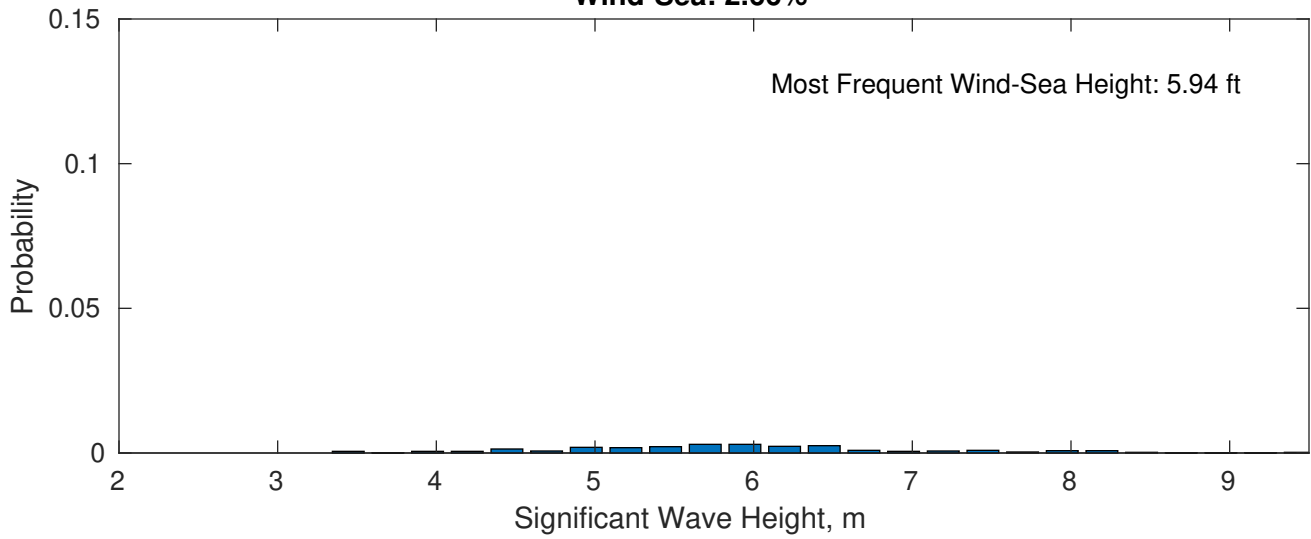
GeoPartners Suriname Multibeam Survey October



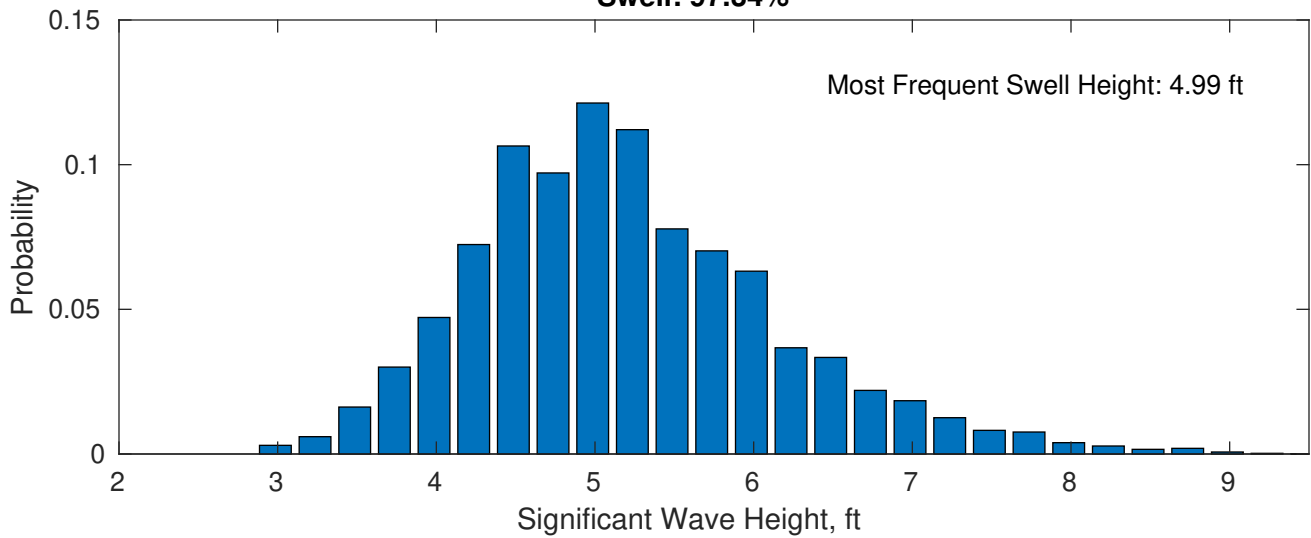
October Wave Height PDF: 1979 - 2015



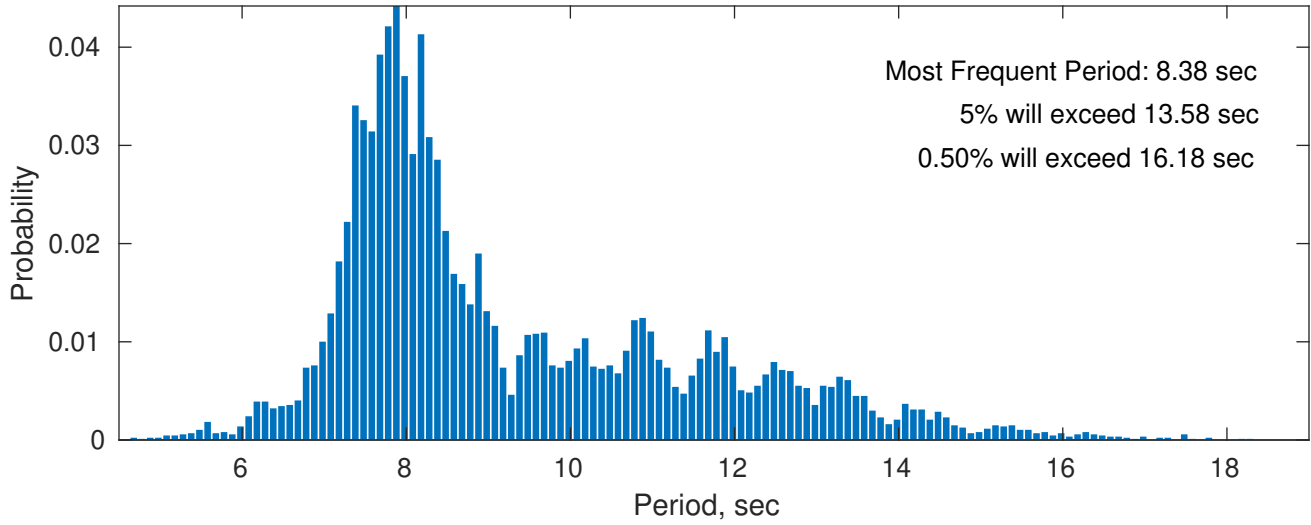
Wind-Sea: 2.66%



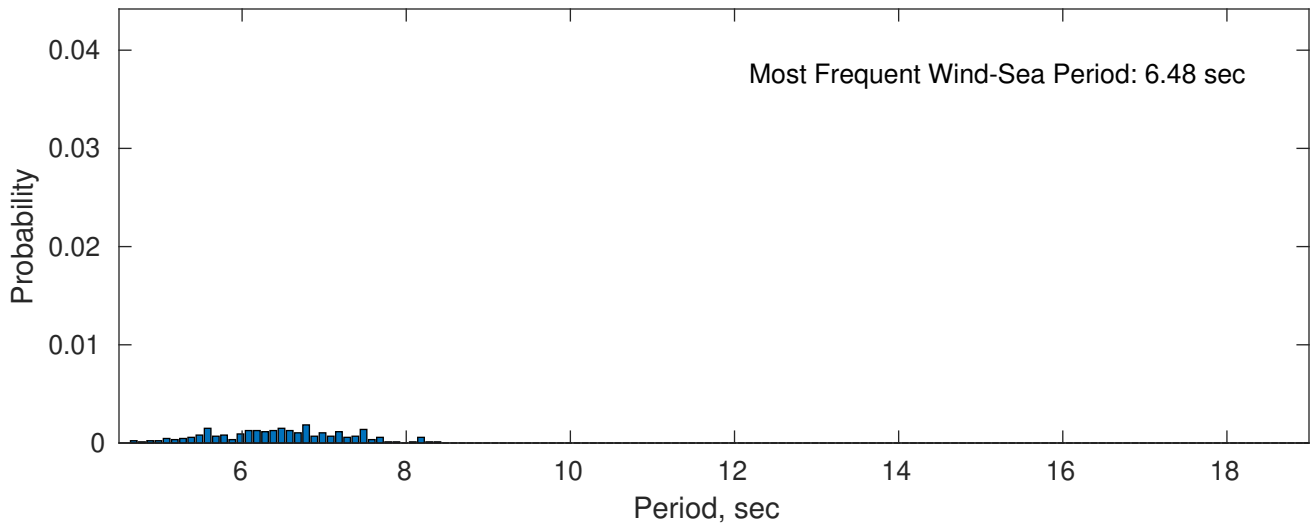
Swell: 97.34%



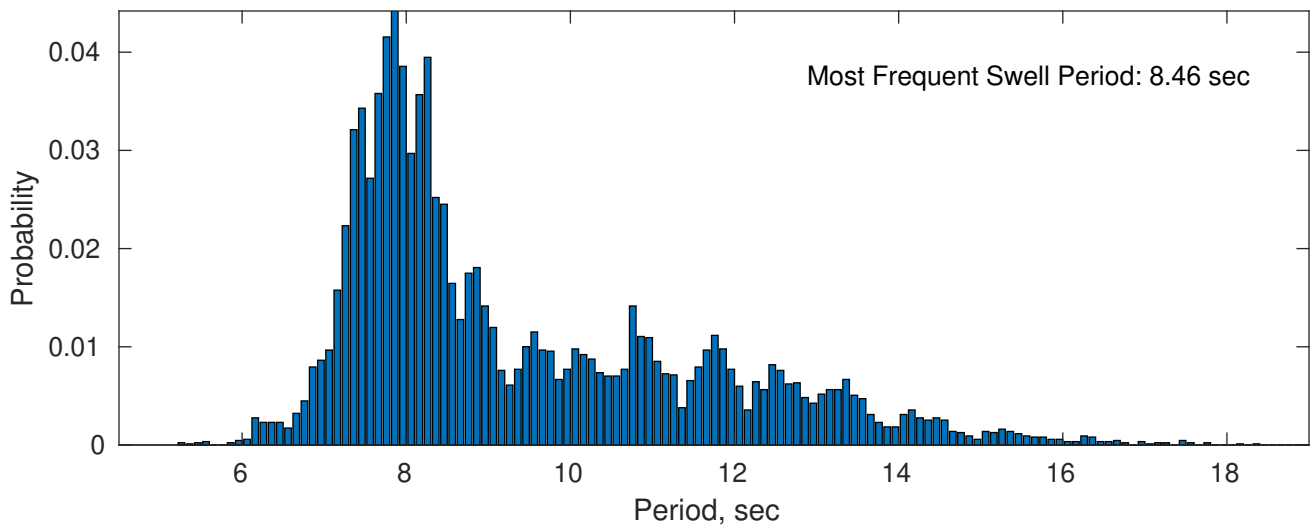
October Peak Wave Period PDF: 1979 - 2015



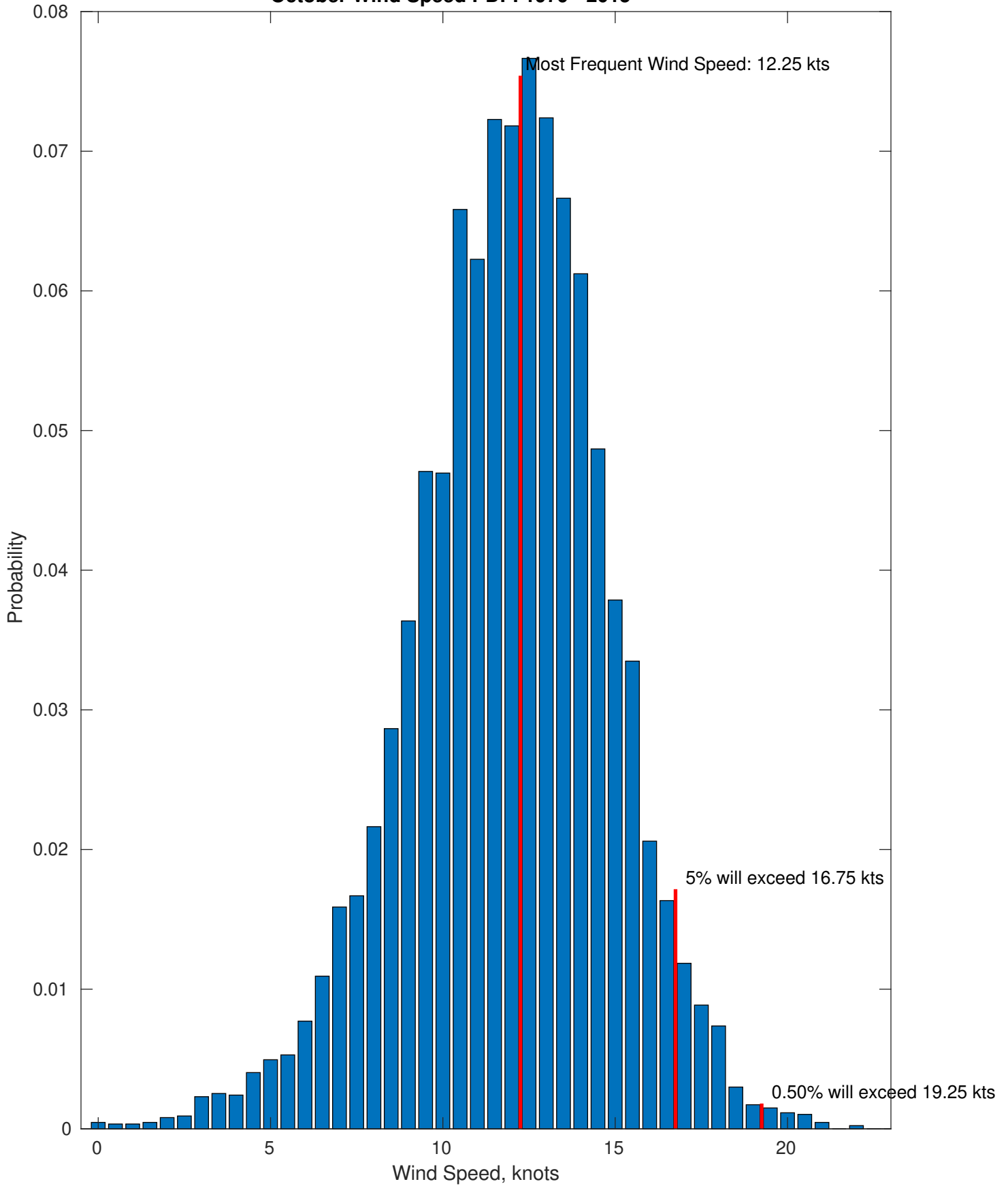
Wind-Sea: 2.66%



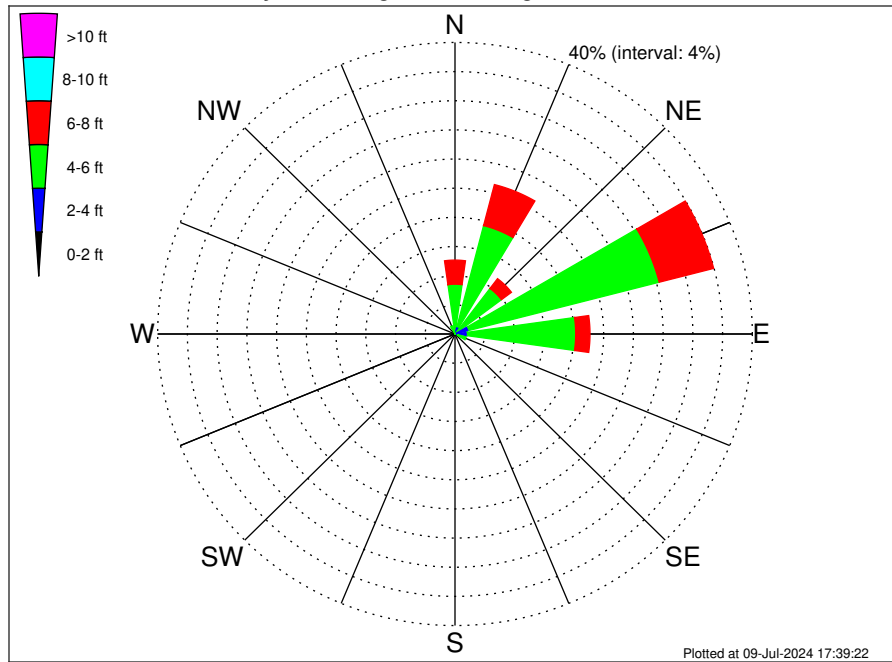
Swell: 97.34%



October Wind Speed PDF: 1979 - 2015



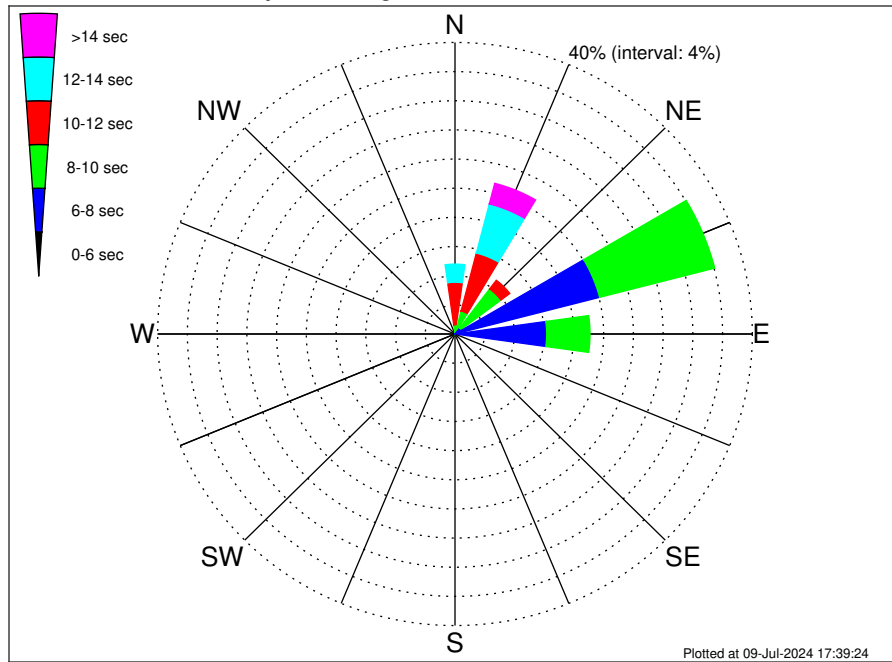
GeoPartners Suriname Multibeam Survey Climatological WaveHeight Rose for October: 1979 - 2015



Joint Frequency Distribution Table

	N	NNE	NE	ENE	E	ESE	SE	SSE	S	SSW	SW	WSW	W	WNW	NW	NNW	Total
calm
1 - 2 ft
2 - 4 ft	0.20	1.06	0.31	1.96	1.68	0.37	0.02	5.59
4 - 6 ft	6.64	14.31	7.52	26.42	14.56	1.19	1.14	71.77
6 - 8 ft	3.30	5.81	1.68	7.56	1.92	0.41	0.56	21.26
8 - 10 ft	0.17	0.17	0.07	0.60	0.22	0.01	0.10	1.35
10 - 12 ft	.	.	.	0.03	0.03
12 - 14 ft
14 - 16 ft
16 - 18 ft
> 18 ft
Total	10.31	21.35	9.58	36.57	18.38	1.98	1.83	100.00

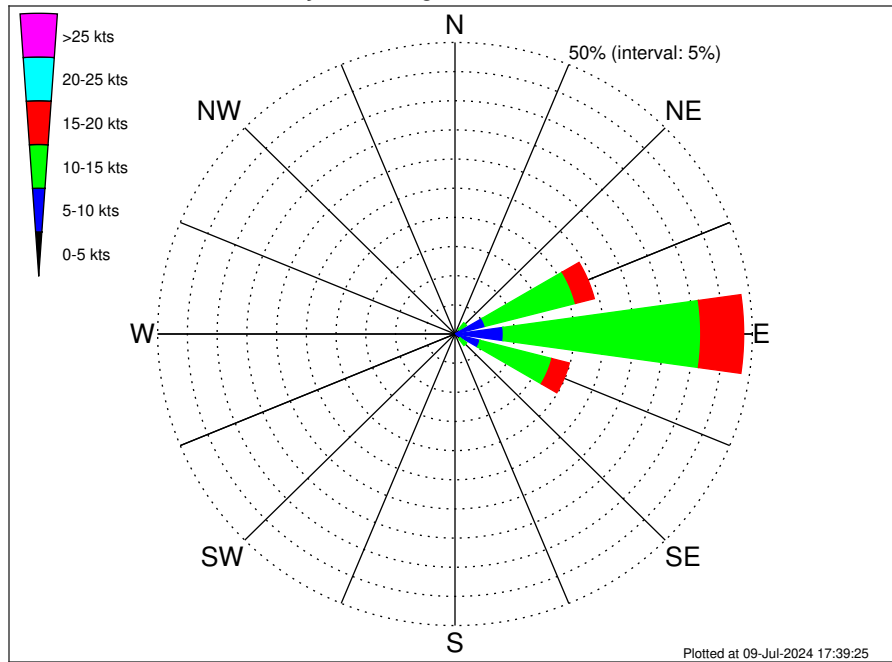
GeoPartners Suriname Multibeam Survey Climatological WavePeriod Rose for October: 1979 - 2015



Joint Frequency Distribution Table

	N	NNE	NE	ENE	E	ESE	SE	SSE	S	SSW	SW	WSW	W	WNW	NW	NNW	Total
calm
1 - 2 sec
2 - 4 sec
4 - 6 sec	.	.	.	0.07	0.43	0.33	0.83
6 - 8 sec	.	0.02	1.02	20.03	11.91	0.89	33.87
8 - 10 sec	1.27	3.23	6.72	16.00	5.82	0.58	0.09	33.71
10 - 12 sec	5.83	8.22	1.48	0.39	0.22	0.18	0.99	17.32
12 - 14 sec	2.49	6.96	0.31	0.09	0.54	10.39
14 - 16 sec	0.71	2.30	0.03	0.18	3.23
18 - 20 sec	0.01	0.58	0.02	0.61
22 - 24 sec	.	0.03	0.03
Total	10.31	21.35	9.58	36.57	18.38	1.98	1.83	100.00

GeoPartners Suriname Multibeam Survey Climatological Wind Rose for October: 1979 - 2015



Joint Frequency Distribution Table

	N	NNE	NE	ENE	E	ESE	SE	SSE	S	SSW	SW	WSW	W	WNW	NW	NNW	Total
calm	•	0.01	•	•	•	0.01	•	•	0.03	•	•	0.01	•	0.01	•	•	0.08
0 - 5 kts	0.09	0.07	0.09	0.14	0.39	0.32	0.12	0.02	0.06	0.01	•	0.01	•	•	0.01	0.05	1.38
5 - 10 kts	0.09	0.24	0.89	5.11	7.75	4.03	0.96	0.22	0.07	0.05	0.05	0.01	•	•	0.02	0.05	19.52
10 - 15 kts	0.01	0.08	1.45	15.67	33.19	12.48	1.40	0.09	0.02	0.06	•	•	•	•	•	0.01	64.47
15 - 20 kts	•	0.01	0.14	3.28	7.22	3.03	0.54	0.03	0.01	•	•	•	•	•	•	•	14.26
20 - 25 kts	•	•	•	0.03	0.10	0.09	0.06	•	•	•	•	•	•	•	•	•	0.29
25 - 30 kts	•	•	•	•	•	•	•	•	•	•	•	•	•	•	•	•	•
30 - 35 kts	•	•	•	•	•	•	•	•	•	•	•	•	•	•	•	•	•
35 - 40 kts	•	•	•	•	•	•	•	•	•	•	•	•	•	•	•	•	•
40 - 45 kts	•	•	•	•	•	•	•	•	•	•	•	•	•	•	•	•	•
45 - 50 kts	•	•	•	•	•	•	•	•	•	•	•	•	•	•	•	•	•
Total	0.20	0.41	2.57	24.24	48.65	19.96	3.07	0.37	0.20	0.12	0.05	0.03	•	0.01	0.03	0.10	100.00