

GeoPartners Suriname Multibeam Survey - September

Latitude: 8.00 N Longitude: 54.50 W

Weather Days

Wave Height > 6.0 ft Mean: 1.5 days Range: 0.0 - 4.0 days p50:3.5 days p75:1.5 days p90:0.5 days

Wave Height > 7.0 ft Mean: 0.2 days Range: 0.0 - 1.0 days p50:30 days p75:1 days p90:0.5 days

Wave Height > 8.0 ft Mean: 0.1 days Range: 0.0 - 0.4 days p50:30 days p75:30 days p90:30 days

Wind Speed > 10.0 knots Mean: 20.5 days Range: 16.8 - 24.1 days p50:21.5 days p75:18.5 days p90:16.5 days

Wind Speed > 15.0 knots Mean: 2.9 days Range: 1.0 - 4.8 days p50:3 days p75:1.5 days p90:1 days

Wind Speed > 20.0 knots Mean: 0.0 days Range: 0.0 - 0.1 days p50:0.5 days p75:0.5 days p90:0.5 days

Working Window

Wave Height < 6.0 ft
A 1 day or longer window will statistically occur 2.5 times per month
A 2 day or longer window will statistically occur 2.2 times per month
A 3 day or longer window will statistically occur 2.1 times per month

Wave Height < 7.0 ft
A 1 day or longer window will statistically occur 1.5 times per month
A 2 day or longer window will statistically occur 1.4 times per month
A 3 day or longer window will statistically occur 1.3 times per month

Wave Height < 8.0 ft
A 1 day or longer window will statistically occur 1.1 times per month
A 2 day or longer window will statistically occur 1.1 times per month
A 3 day or longer window will statistically occur 1.1 times per month

Waves

Mean Height: 4 - 6 ft

The wave heights will occasionally reach 6 - 8 ft, but rarely higher.

Mean Period: 8 - 10 sec

The wave periods will occasionally reach 14 - 16 sec, but rarely longer.

Principle Direction, from: ENE

WindSea/Swell: 2% / 98%

Winds

Mean Speed: 10 - 15 kts

The winds will occasionally reach 15 - 20 kts, but rarely greater.

Principle Direction, from: E

Currents

Mean Speed: 0.50-0.75 kts

The currents will occasionally reach 2.25-2.50 kts, but rarely greater.

Principle Direction, to: NW

Weather Days

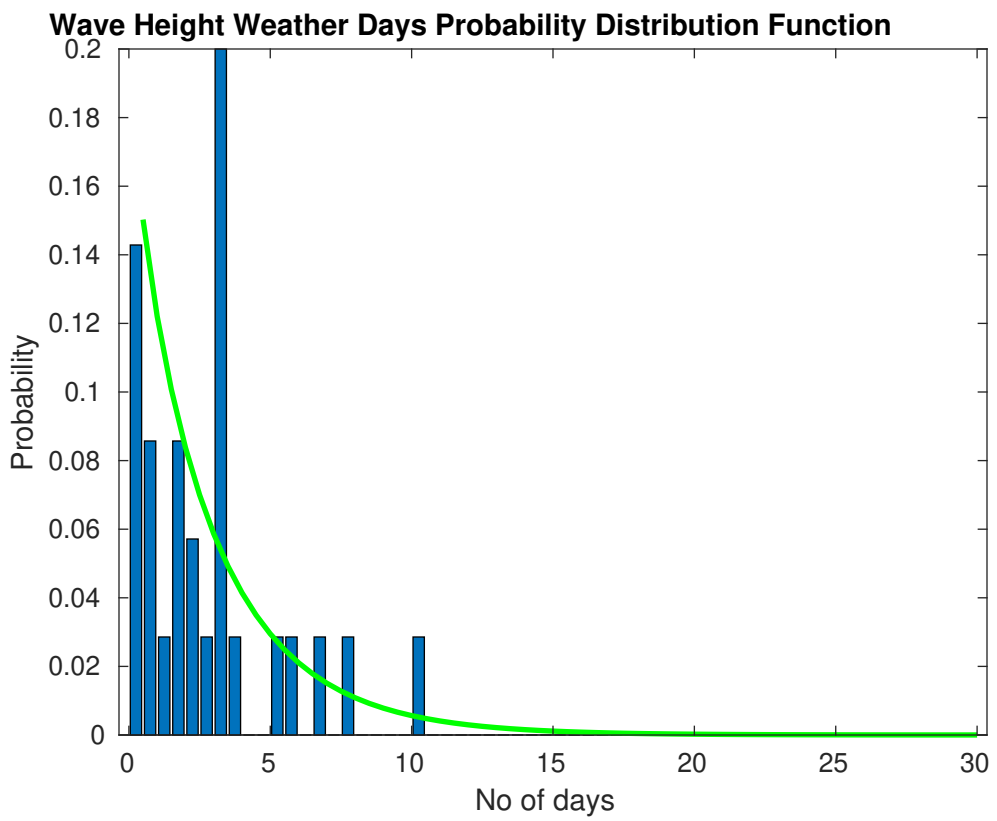
Current Speed > 1.0 knots Mean: 11.2 days Range: 2.2 - 20.2 days p50:11 days p75:3 days p90:2 days

Current Speed > 1.5 knots Mean: 6.0 days Range: 0.0 - 12.3 days p50:5 days p75:1 days p90:1 days

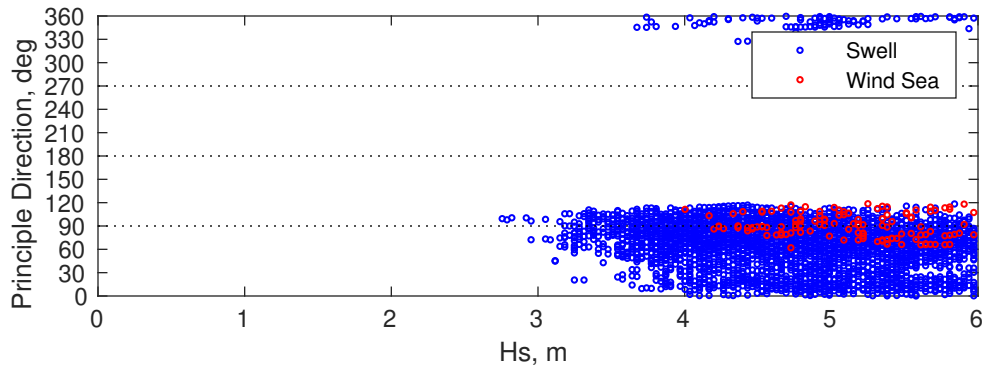
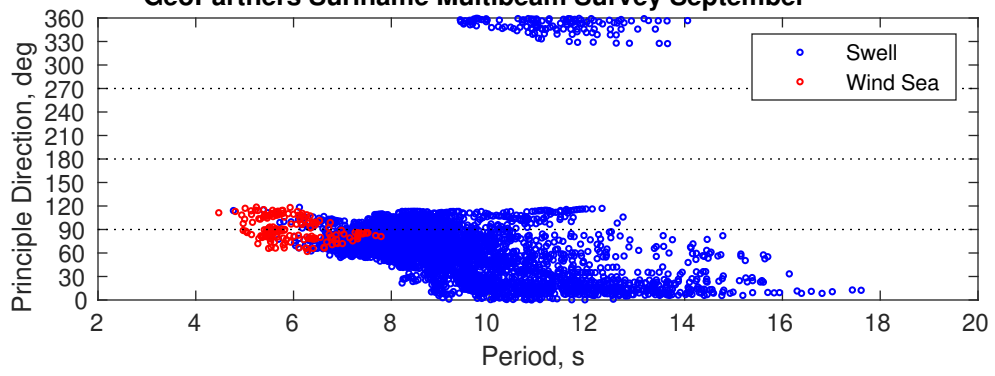
Current Speed > 2.0 knots Mean: 3.0 days Range: 0.0 - 6.8 days p50:3 days p75:1 days p90:1 days

Severe Storms

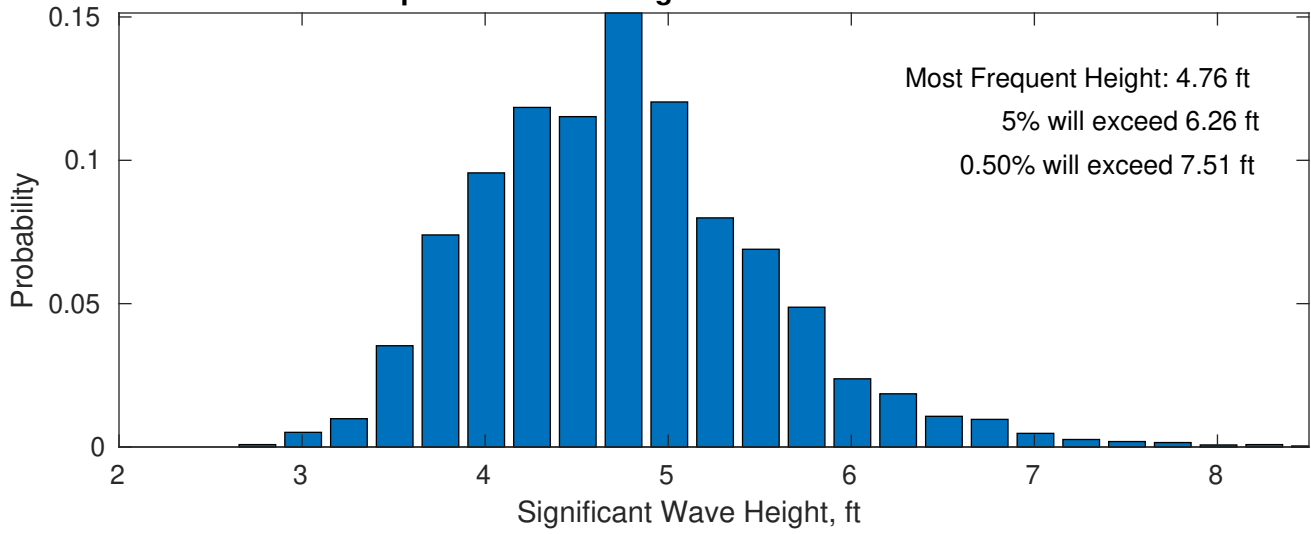
Severe storms with gale force winds and extreme waves are not expected during this month.



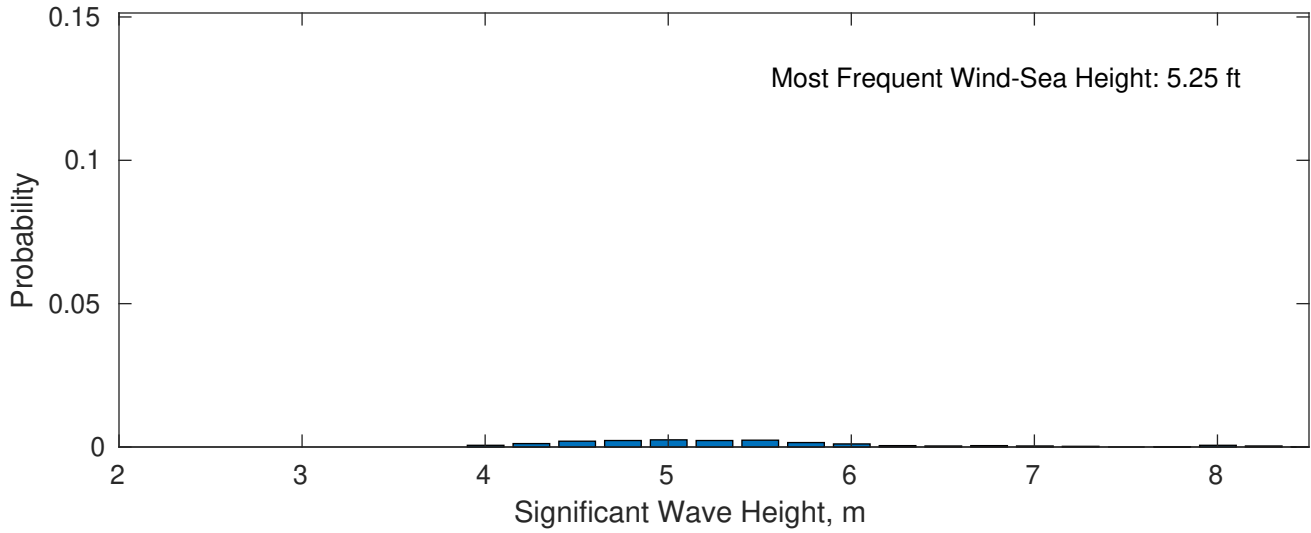
GeoPartners Suriname Multibeam Survey September



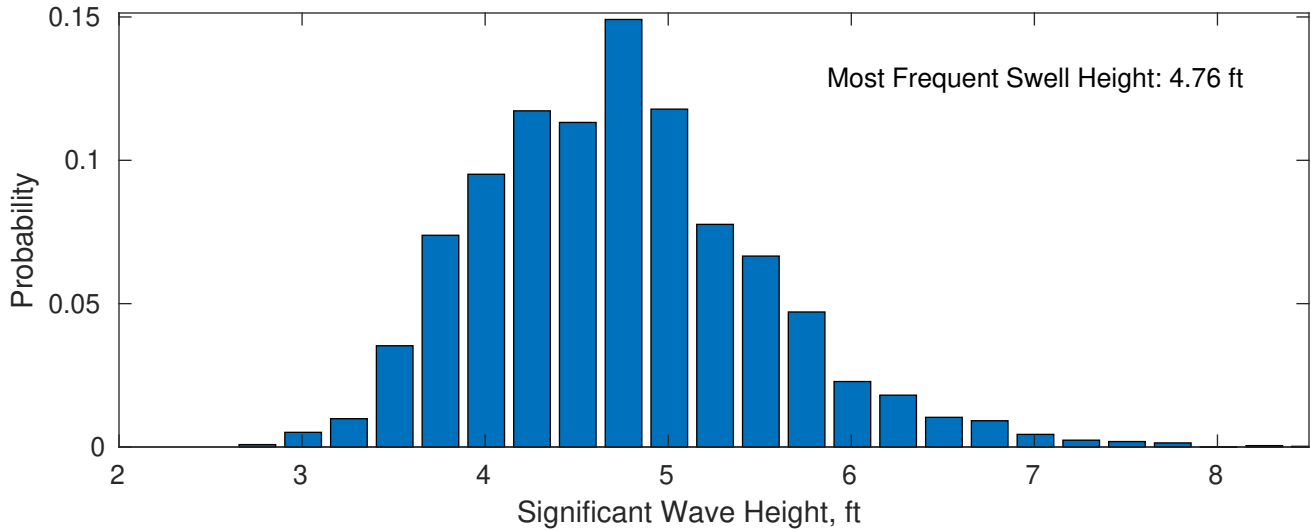
September Wave Height PDF: 1979 - 2015



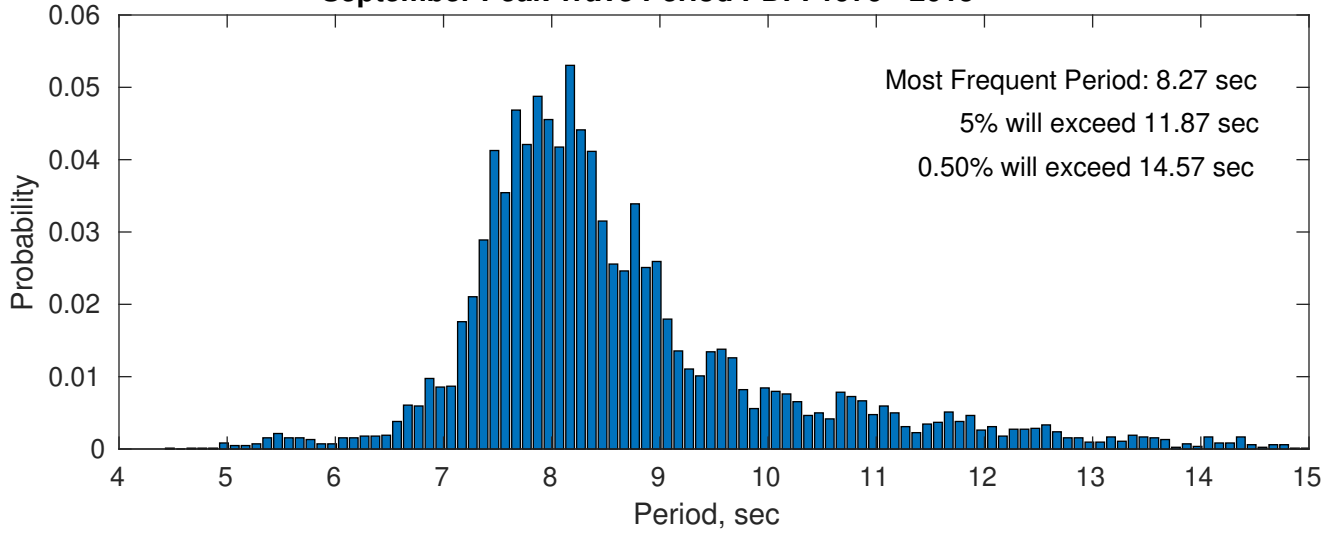
Wind-Sea: 1.89%



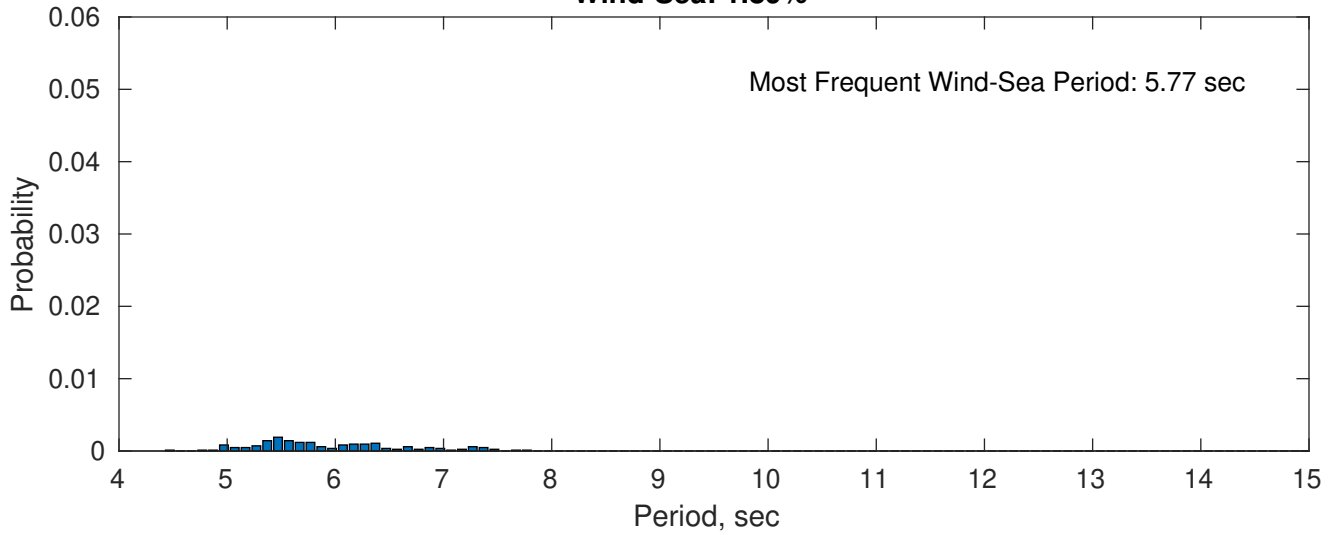
Swell: 98.11%



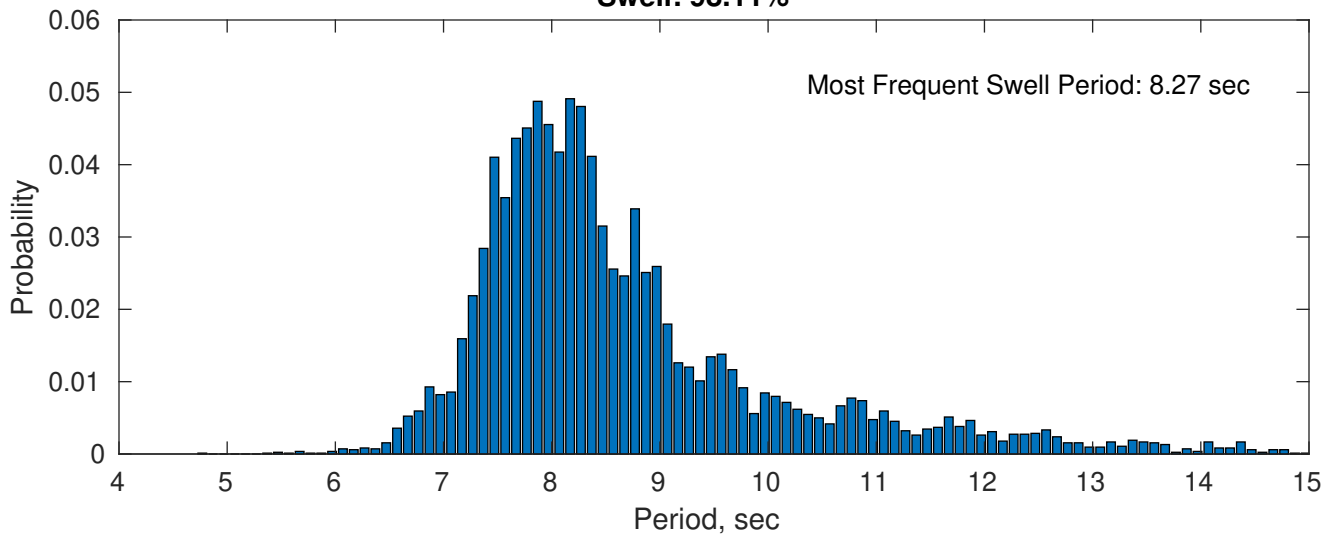
September Peak Wave Period PDF: 1979 - 2015



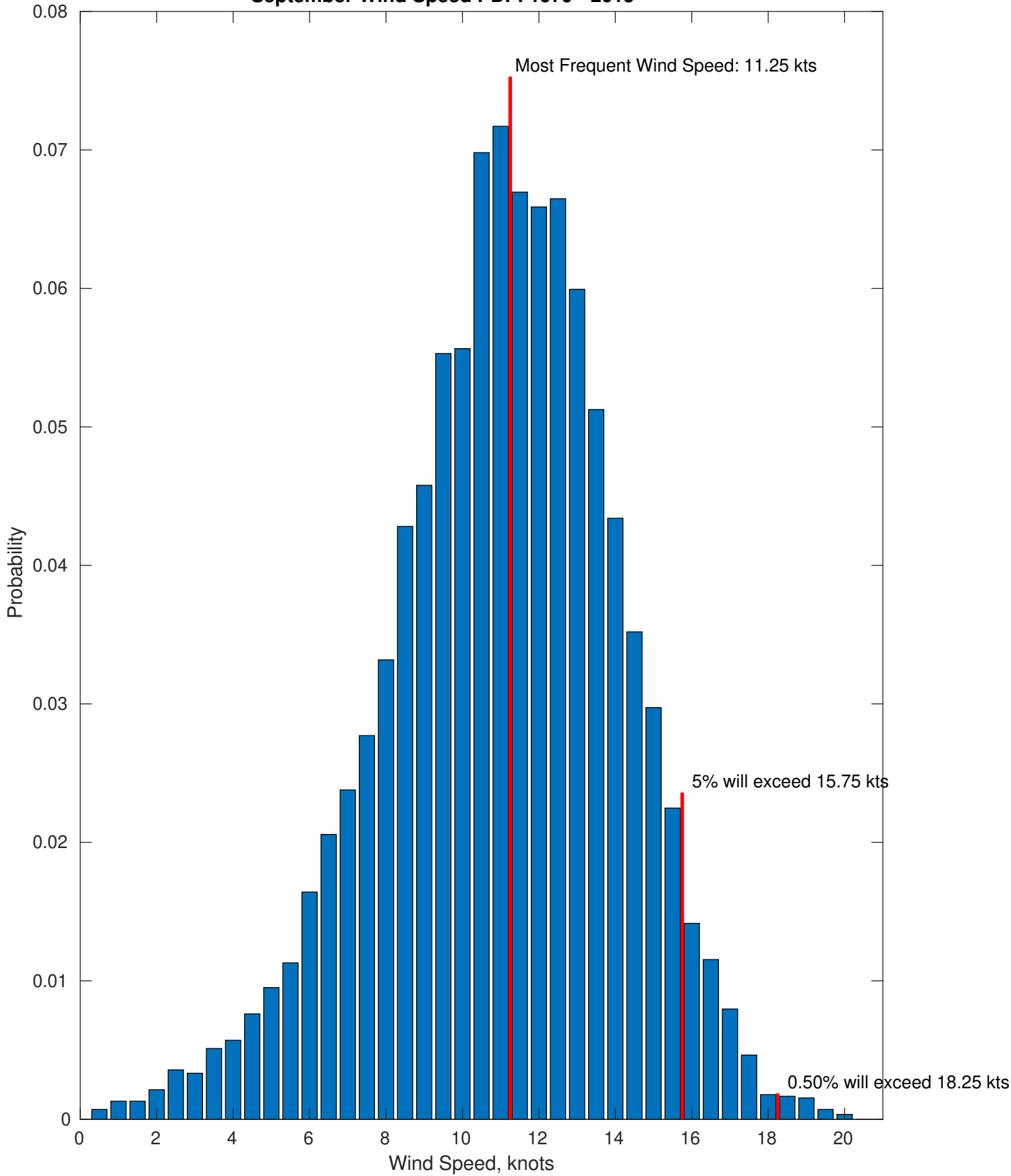
Wind-Sea: 1.89%



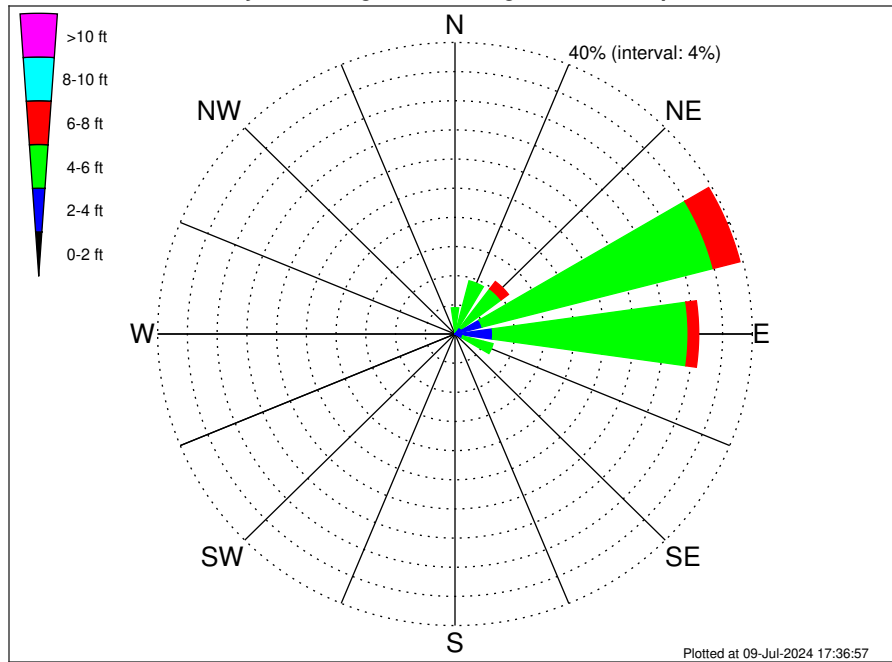
Swell: 98.11%



September Wind Speed PDF: 1979 - 2015



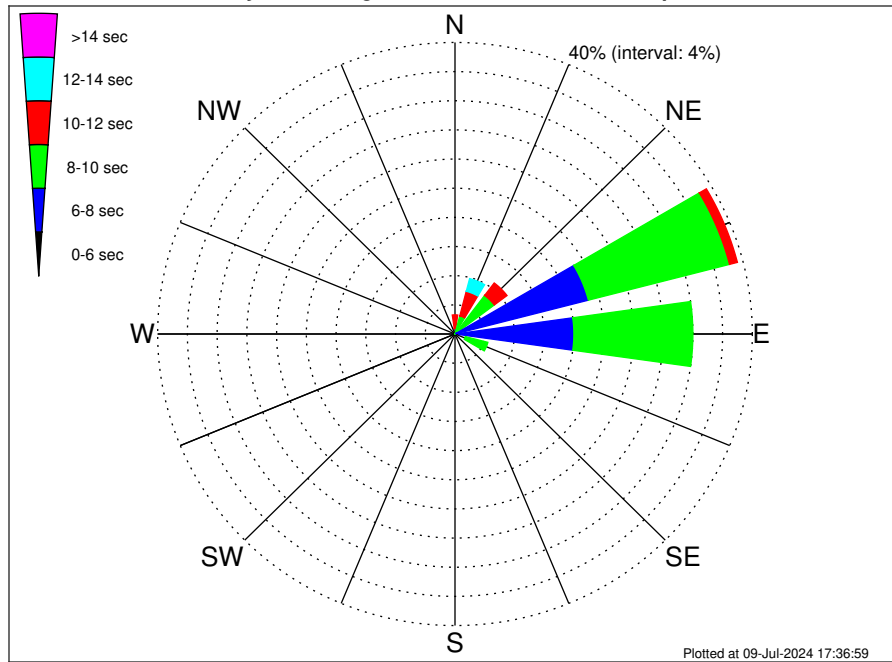
GeoPartners Suriname Multibeam Survey Climatological WaveHeight Rose for September: 1979 - 2015



Joint Frequency Distribution Table

	N	NNE	NE	ENE	E	ESE	SE	SSE	S	SSW	SW	WSW	W	WNW	NW	NNW	Total
calm	•	•	•	•	•	•	•	•	•	•	•	•	•	•	•	•	•
1 - 2 ft	•	•	•	•	•	•	•	•	•	•	•	•	•	•	•	•	•
2 - 4 ft	0.07	0.40	1.09	3.76	5.08	1.06	•	•	•	•	•	•	•	•	•	0.05	11.51
4 - 6 ft	3.54	7.14	6.67	32.13	26.28	4.23	•	•	•	•	•	•	•	•	•	0.38	80.38
6 - 8 ft	0.31	0.80	1.25	3.71	1.43	0.17	•	•	•	•	•	•	•	•	•	0.17	7.82
8 - 10 ft	•	•	0.13	0.01	0.11	•	•	•	•	•	•	•	•	•	•	•	0.25
10 - 12 ft	•	•	0.04	•	•	•	•	•	•	•	•	•	•	•	•	•	0.04
12 - 14 ft	•	•	•	•	•	•	•	•	•	•	•	•	•	•	•	•	•
14 - 16 ft	•	•	•	•	•	•	•	•	•	•	•	•	•	•	•	•	•
16 - 18 ft	•	•	•	•	•	•	•	•	•	•	•	•	•	•	•	•	•
> 18 ft	•	•	•	•	•	•	•	•	•	•	•	•	•	•	•	•	•
Total	3.92	8.34	9.18	39.61	32.89	5.46	•	•	•	•	•	•	•	•	•	0.59	100.00

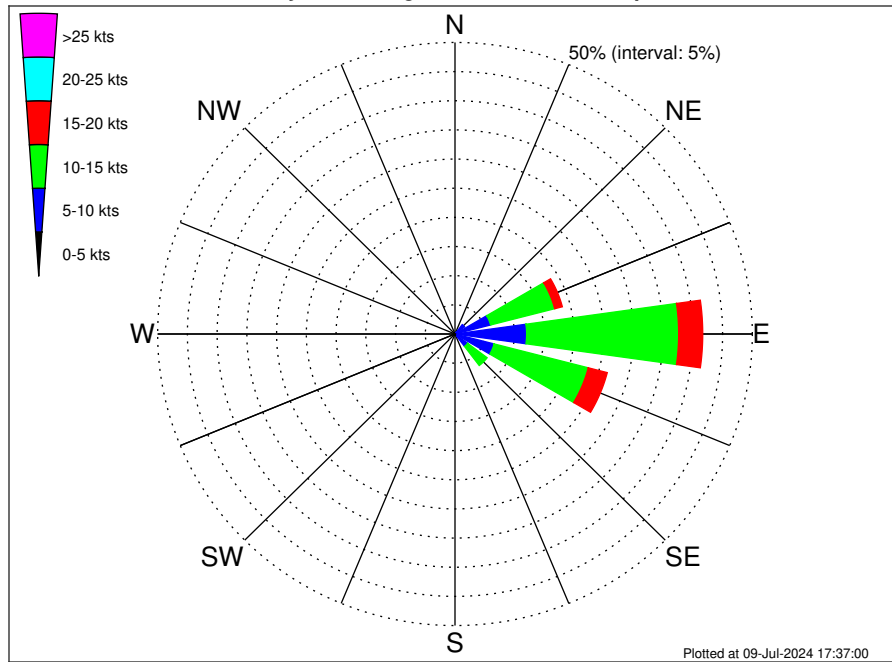
GeoPartners Suriname Multibeam Survey Climatological WavePeriod Rose for September: 1979 - 2015



Joint Frequency Distribution Table

	N	NNE	NE	ENE	E	ESE	SE	SSE	S	SSW	SW	WSW	W	WNW	NW	NNW	Total
calm
1 - 2 sec
2 - 4 sec
4 - 6 sec	.	.	.	0.18	0.54	0.48	1.19
6 - 8 sec	.	.	0.49	18.36	15.46	0.98	35.28
8 - 10 sec	0.77	2.57	6.14	19.61	16.01	3.12	48.21
10 - 12 sec	1.86	3.48	2.14	1.09	0.80	0.86	0.43	10.66
12 - 14 sec	0.99	1.80	0.26	0.21	0.08	0.04	0.17	3.54
14 - 16 sec	0.26	0.44	0.15	0.15	0.01	1.02
18 - 20 sec	0.05	0.05	0.10
22 - 24 sec
Total	3.92	8.34	9.18	39.61	32.89	5.46	0.59	100.00

GeoPartners Suriname Multibeam Survey Climatological Wind Rose for September: 1979 - 2015



Joint Frequency Distribution Table

	N	NNE	NE	ENE	E	ESE	SE	SSE	S	SSW	SW	WSW	W	WNW	NW	NNW	Total
calm	•	0.01	•	•	•	•	•	0.02	0.01	0.01	•	•	•	0.01	•	•	0.07
0 - 5 kts	0.05	0.14	0.31	0.49	0.59	0.39	0.49	0.25	0.10	0.04	0.04	0.06	0.01	0.01	0.01	0.04	3.01
5 - 10 kts	0.02	0.26	1.71	5.70	11.45	6.40	2.18	0.52	0.17	0.07	0.07	0.01	0.02	0.02	0.01	0.01	28.64
10 - 15 kts	•	•	0.90	11.13	25.57	16.36	4.10	0.48	0.07	0.01	•	•	•	•	•	•	58.63
15 - 20 kts	•	•	0.06	1.33	4.04	3.29	0.81	0.08	•	•	•	•	•	•	•	•	9.62
20 - 25 kts	•	•	•	0.04	•	•	•	•	•	•	•	•	•	•	•	•	0.04
25 - 30 kts	•	•	•	•	•	•	•	•	•	•	•	•	•	•	•	•	•
30 - 35 kts	•	•	•	•	•	•	•	•	•	•	•	•	•	•	•	•	•
35 - 40 kts	•	•	•	•	•	•	•	•	•	•	•	•	•	•	•	•	•
40 - 45 kts	•	•	•	•	•	•	•	•	•	•	•	•	•	•	•	•	•
45 - 50 kts	•	•	•	•	•	•	•	•	•	•	•	•	•	•	•	•	•
Total	0.07	0.42	2.98	18.68	41.66	26.45	7.58	1.36	0.34	0.13	0.11	0.07	0.04	0.05	0.02	0.05	100.00