

Klamath Slide - February

Latitude: 41.53 N Longitude: 124.25 W

Weather Days

Wave Height > 6.0 ft Mean: 16.2 days Range: 12.1 - 20.3 days p50:26.5 days p75:23.5 days p90:19 days

Wave Height > 7.0 ft Mean: 12.5 days Range: 7.5 - 17.5 days p50:21.5 days p75:17.5 days p90:15.5 days

Wave Height > 8.0 ft Mean: 9.3 days Range: 3.3 - 15.3 days p50:18 days p75:14.5 days p90:11.5 days

Wind Speed > 15.0 knots Mean: 5.3 days Range: 2.0 - 8.7 days p50:4.5 days p75:3 days p90:1.5 days

Wind Speed > 20.0 knots Mean: 1.9 days Range: 0.1 - 3.6 days p50:1.5 days p75:0.5 days p90:0.5 days

Wind Speed > 25.0 knots Mean: 0.4 days Range: 0.0 - 1.1 days p50:0.5 days p75:0.5 days p90:0.5 days

Working Window

Wave Height < 6.0 ft
A 1 day or longer window will statistically occur 1.2 times per month
A 2 day or longer window will statistically occur 0.6 times per month
A 3 day or longer window will statistically occur 0.3 times per month

Wave Height < 7.0 ft
A 1 day or longer window will statistically occur 1.9 times per month
A 2 day or longer window will statistically occur 1.0 times per month
A 3 day or longer window will statistically occur 0.6 times per month

Wave Height < 8.0 ft
A 1 day or longer window will statistically occur 2.5 times per month
A 2 day or longer window will statistically occur 1.3 times per month
A 3 day or longer window will statistically occur 0.9 times per month

Waves

Mean Height: 8 - 10 ft

The wave heights will occasionally reach > 18 ft, but rarely higher.

Mean Period: 12 - 14 sec

The wave periods will occasionally reach 22 - 24 sec, but rarely longer.

Principle Direction, from: W

WindSea/Swell: 0% / 100%

Winds

Mean Speed: 5 - 10 kts

The winds will occasionally reach 25 - 30 kts, but rarely greater.

Principle Direction, from: S

Currents

Mean Speed: 0.25-0.50 kts

The currents will occasionally reach 1.50-1.75 kts, but rarely greater.

Principle Direction, to: N

Weather Days

Current Speed > 1.0 knots Mean: 2.4 days Range: 0.0 - 5.7 days p50:2 days p75:1 days p90:1 days

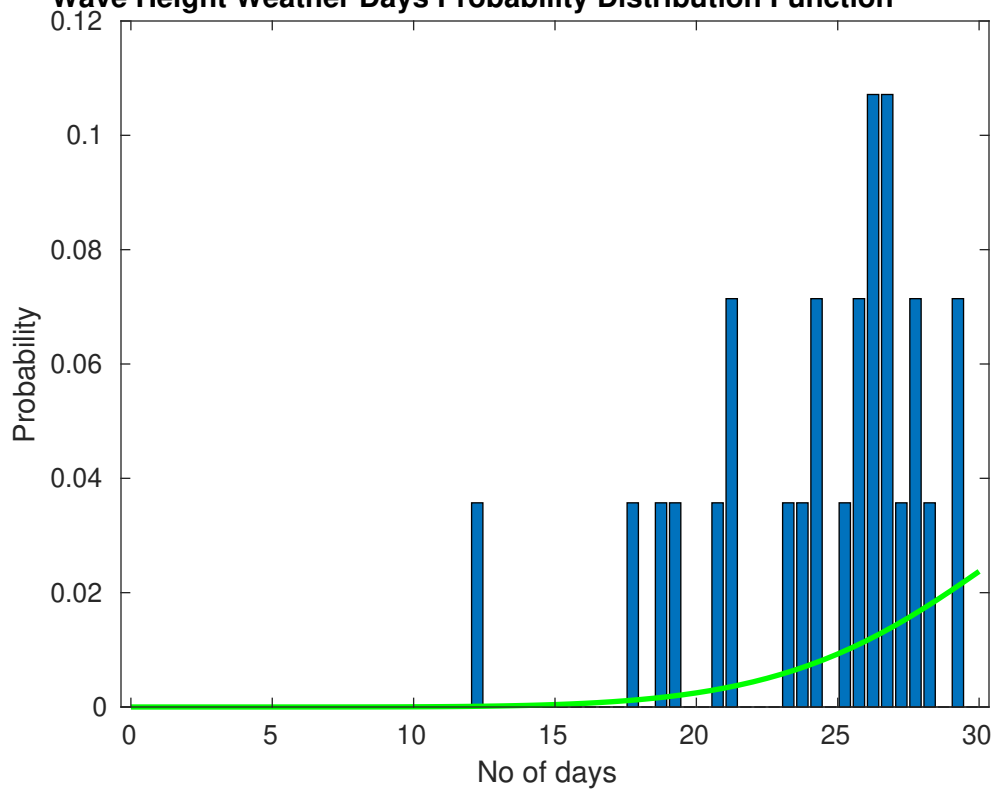
Current Speed > 1.5 knots Mean: 0.6 days Range: 0.0 - 1.6 days p50:1 days p75:1 days p90:1 days

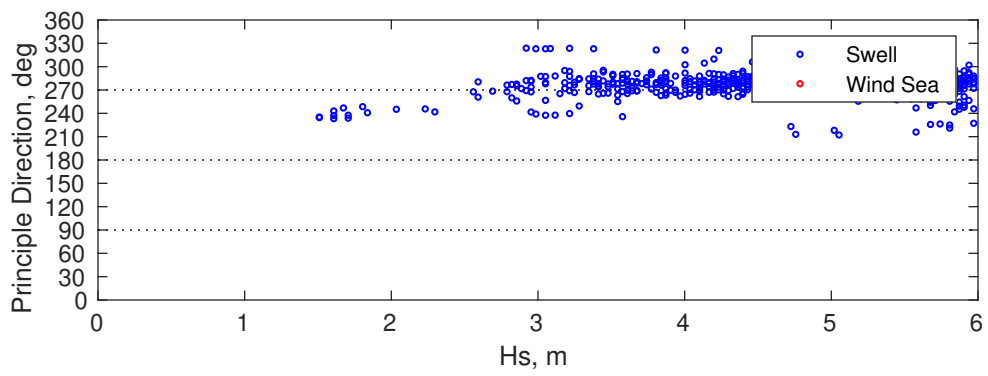
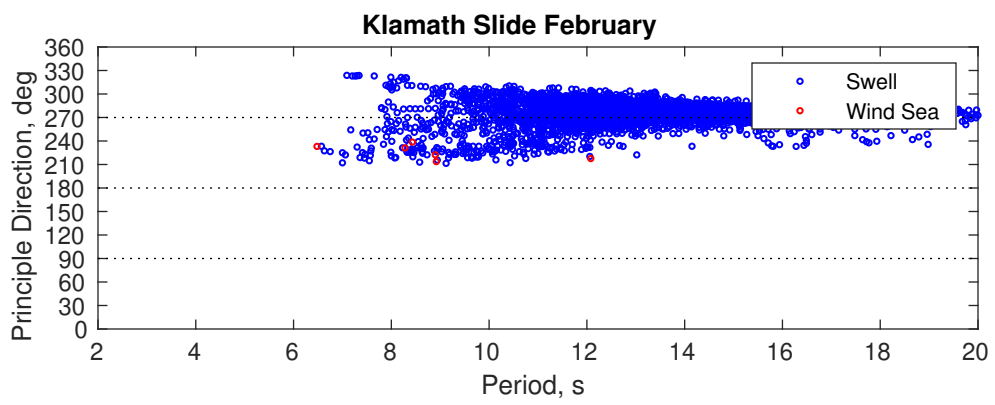
Current Speed > 2.0 knots Mean: 0.1 days Range: 0.0 - 0.3 days p50:1 days p75:1 days p90:1 days

Severe Storms

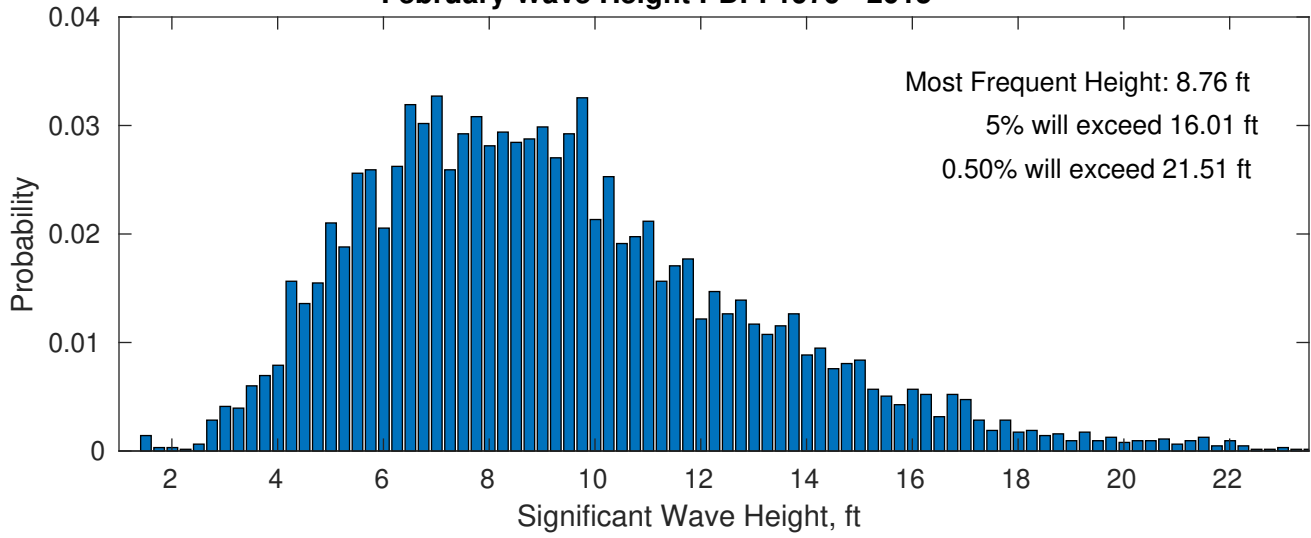
Severe storms with gale force winds and extreme waves are not expected during this month.

Wave Height Weather Days Probability Distribution Function

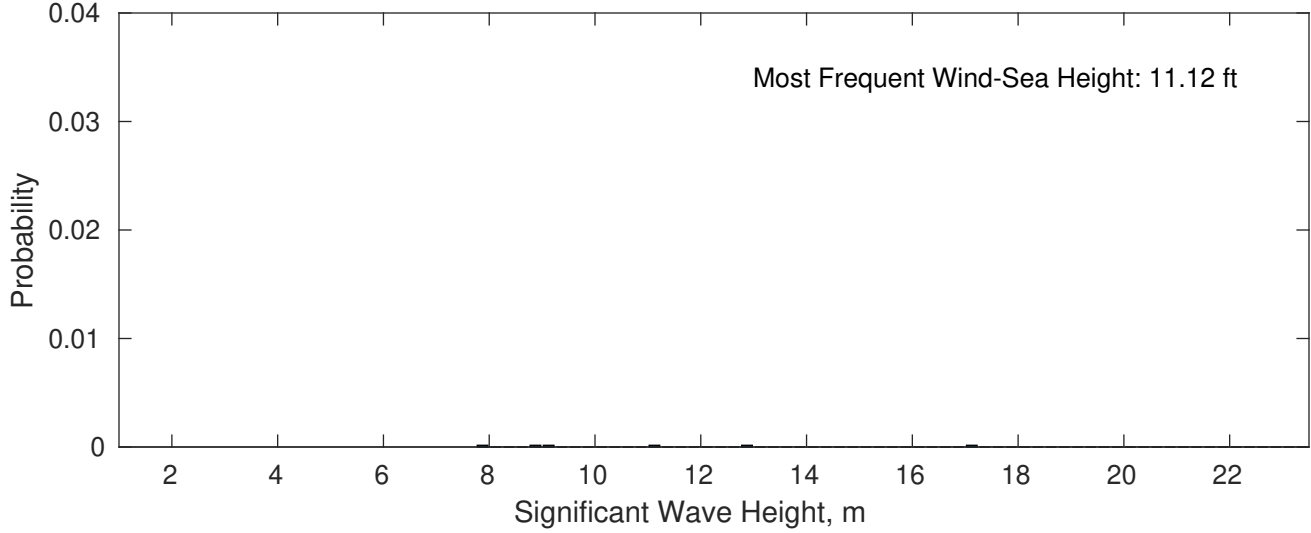




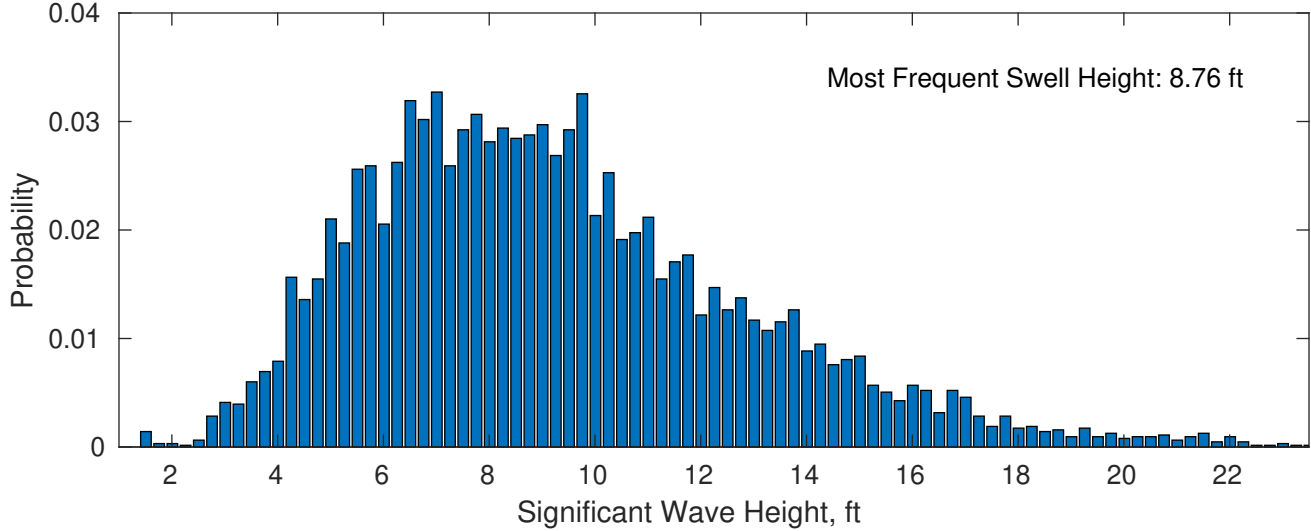
February Wave Height PDF: 1979 - 2015



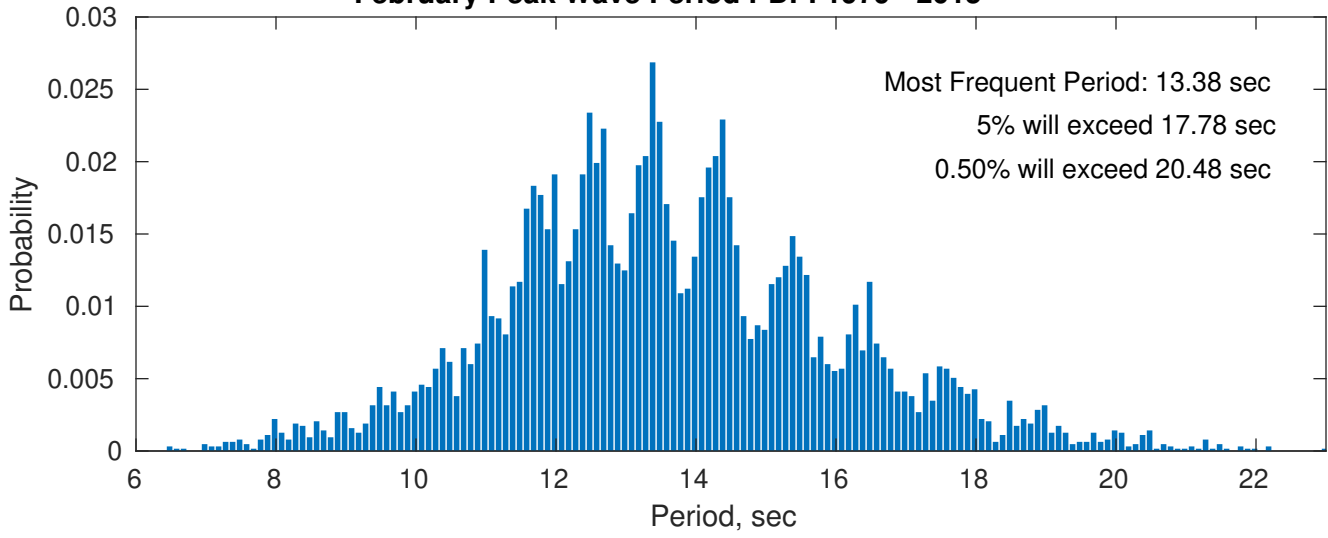
Wind-Sea: 0.09%



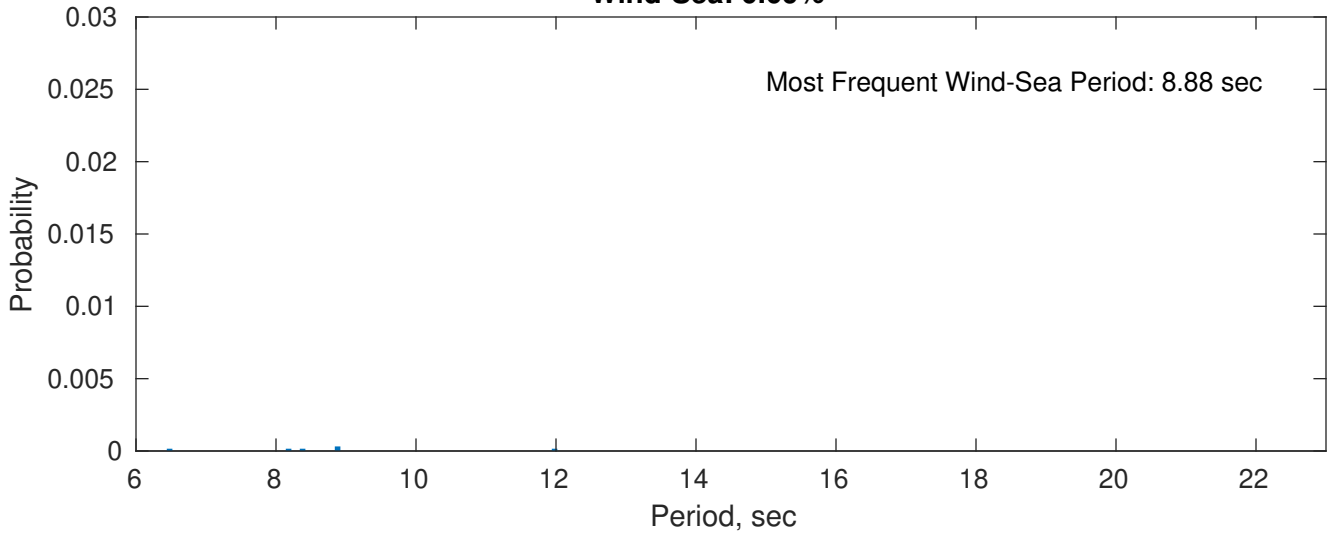
Swell: 99.91%



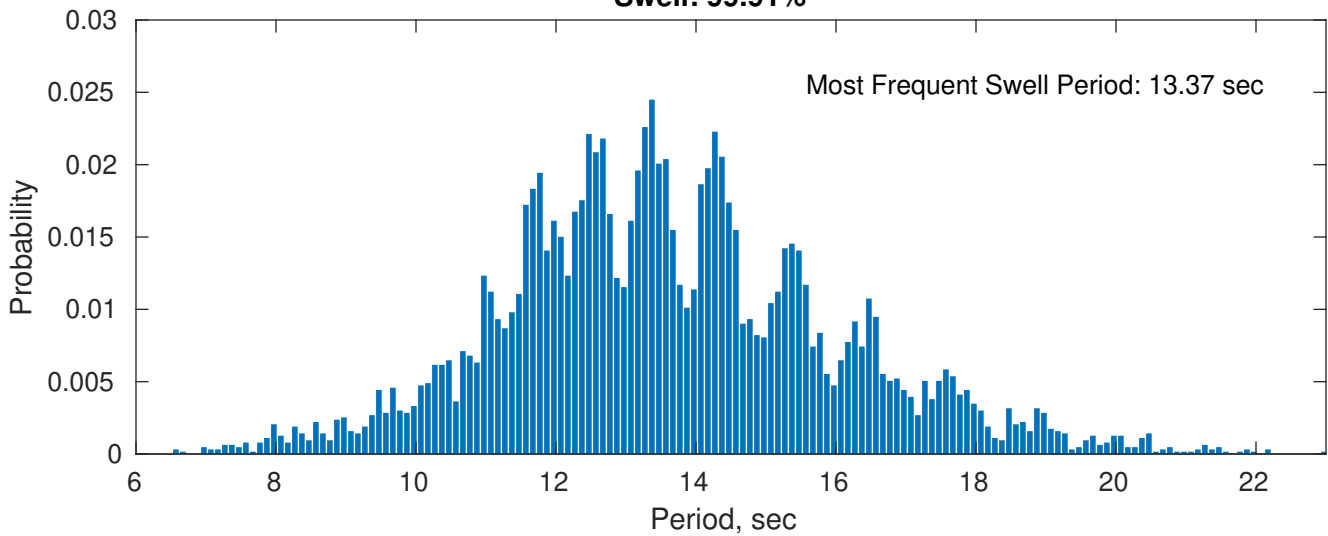
February Peak Wave Period PDF: 1979 - 2015



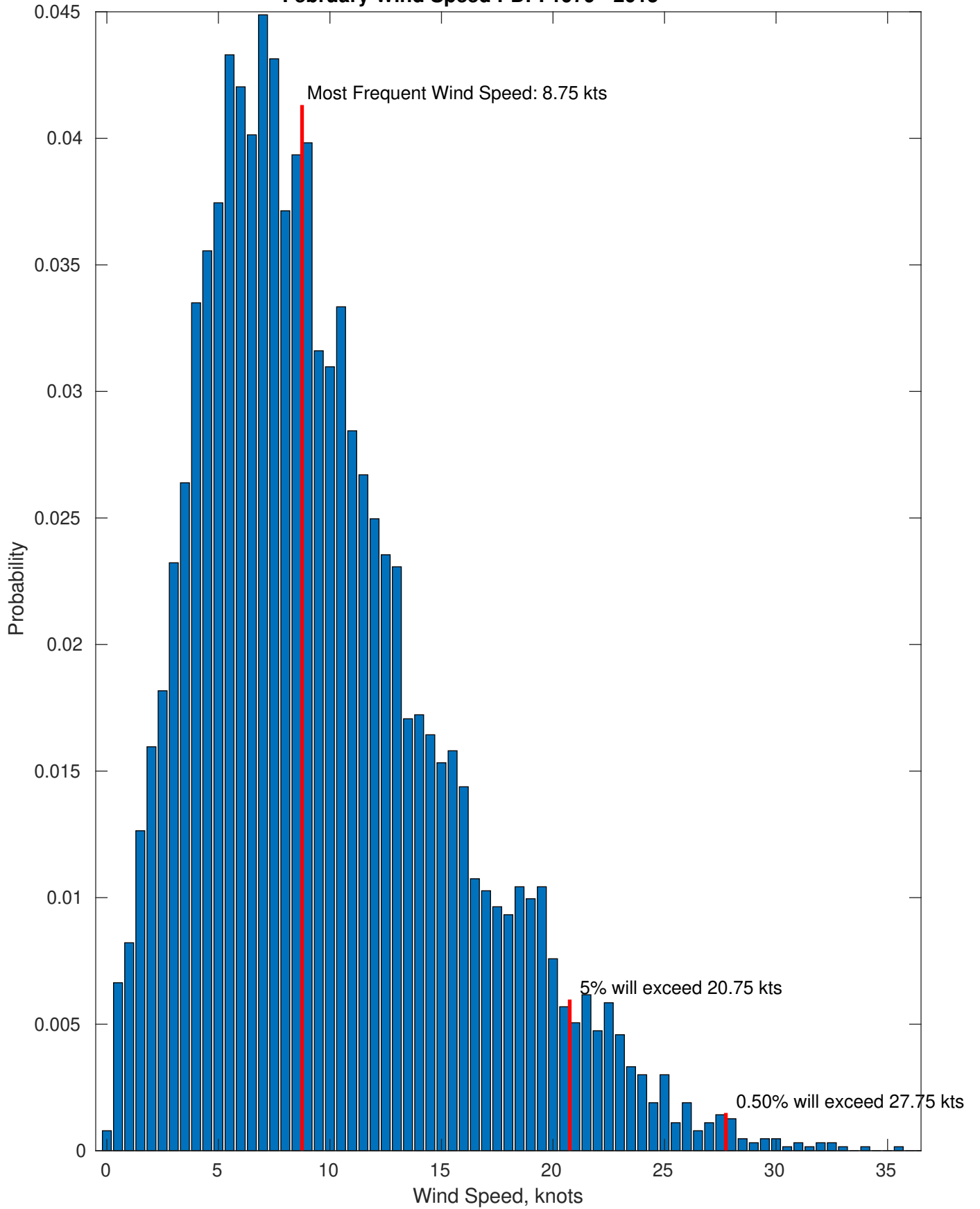
Wind-Sea: 0.09%



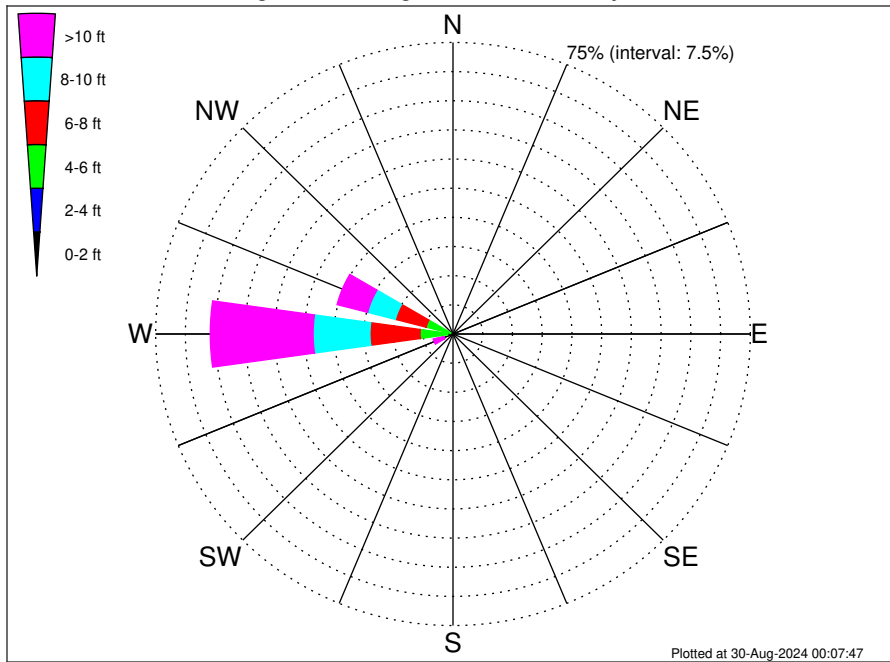
Swell: 99.91%



February Wind Speed PDF: 1979 - 2015



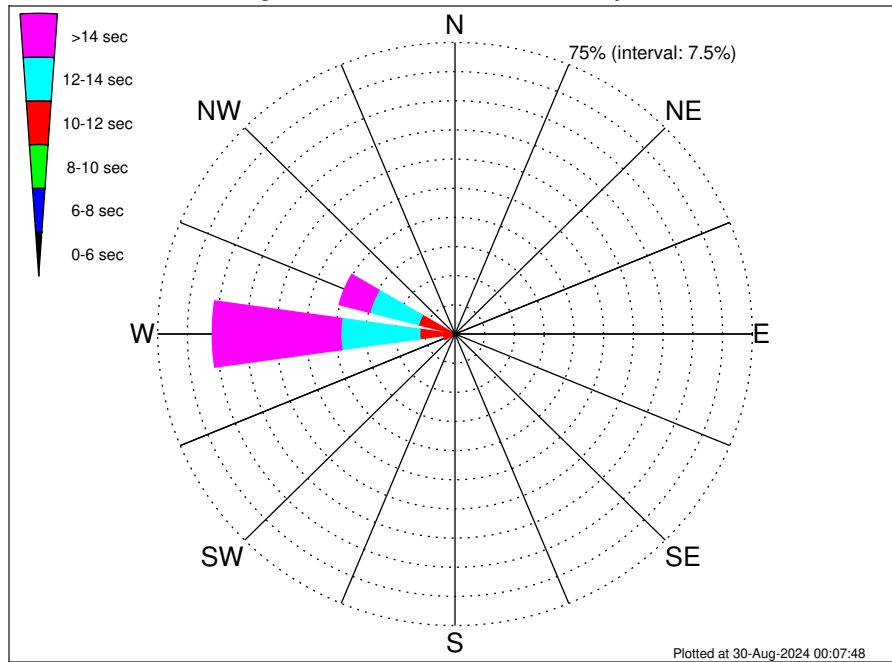
Klamath Slide Climatological WaveHeight Rose for February: 1979 - 2015



Joint Frequency Distribution Table

	N	NNE	NE	ENE	E	ESE	SE	SSE	S	SSW	SW	WSW	W	WNW	NW	NNW	Total
calm	•	•	•	•	•	•	•	•	•	•	•	•	•	•	•	•	•
1 - 2 ft	•	•	•	•	•	•	•	•	•	•	0.08	0.09	•	•	•	•	0.17
2 - 4 ft	•	•	•	•	•	•	•	•	•	•	0.02	0.19	1.37	0.65	0.11	•	2.34
4 - 6 ft	•	•	•	•	•	•	•	•	•	0.03	0.13	0.28	6.94	6.37	0.49	•	14.24
6 - 8 ft	•	•	•	•	•	•	•	•	•	0.05	1.01	0.76	12.64	8.01	0.17	•	22.65
8 - 10 ft	•	•	•	•	•	•	•	•	•	•	0.62	1.11	14.33	7.22	0.09	•	23.37
10 - 12 ft	•	•	•	•	•	•	•	•	•	•	0.38	1.06	10.45	3.87	0.06	•	15.82
12 - 14 ft	•	•	•	•	•	•	•	•	•	•	0.13	0.65	7.16	2.20	•	•	10.13
14 - 16 ft	•	•	•	•	•	•	•	•	•	•	0.02	0.58	4.17	1.12	•	•	5.89
16 - 18 ft	•	•	•	•	•	•	•	•	•	•	0.05	0.16	2.40	0.55	•	•	3.16
> 18 ft	•	•	•	•	•	•	•	•	•	•	•	0.27	1.75	0.21	•	•	2.23
Total	•	•	•	•	•	•	•	•	•	0.08	2.42	5.15	61.22	30.20	0.93	•	100.00

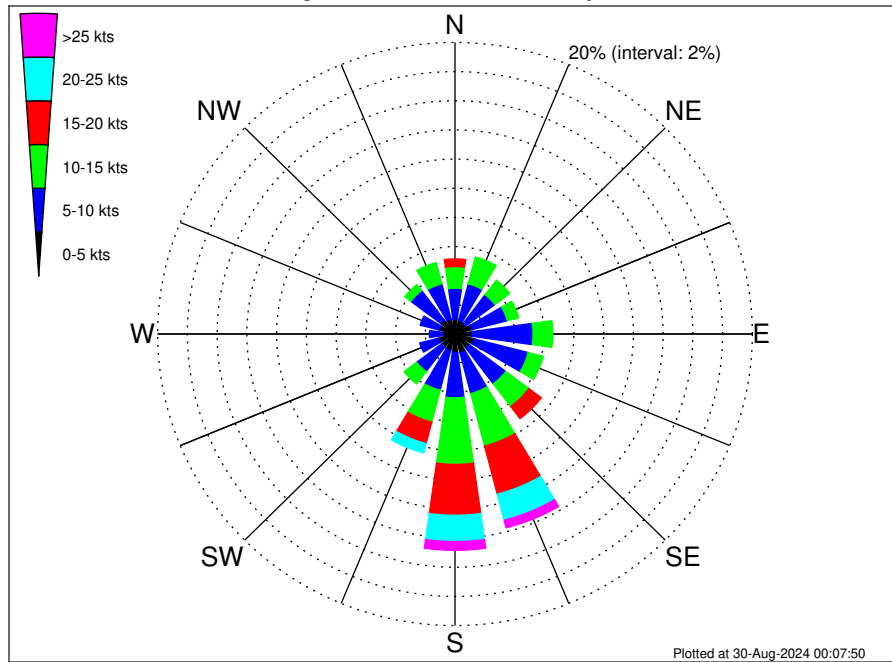
Klamath Slide Climatological WavePeriod Rose for February: 1979 - 2015



Joint Frequency Distribution Table

	N	NNE	NE	ENE	E	ESE	SE	SSE	S	SSW	SW	WSW	W	WNW	NW	NNW	Total
calm	•	•	•	•	•	•	•	•	•	•	•	•	•	•	•	•	•
1 - 2 sec	•	•	•	•	•	•	•	•	•	•	•	•	•	•	•	•	•
2 - 4 sec	•	•	•	•	•	•	•	•	•	•	•	•	•	•	•	•	•
4 - 6 sec	•	•	•	•	•	•	•	•	•	•	•	•	•	•	•	•	•
6 - 8 sec	•	•	•	•	•	•	•	•	•	0.02	0.28	0.14	0.06	0.05	0.17	•	0.73
8 - 10 sec	•	•	•	•	•	•	•	•	•	0.05	1.01	0.70	0.96	1.22	0.47	•	4.41
10 - 12 sec	•	•	•	•	•	•	•	•	•	0.02	0.88	2.07	7.87	8.25	0.21	•	19.30
12 - 14 sec	•	•	•	•	•	•	•	•	•	•	0.13	1.25	19.93	12.69	0.08	•	34.07
14 - 16 sec	•	•	•	•	•	•	•	•	•	•	0.06	0.51	18.77	6.15	•	•	25.49
18 - 20 sec	•	•	•	•	•	•	•	•	•	•	0.03	0.38	9.50	1.69	•	•	11.60
22 - 24 sec	•	•	•	•	•	•	•	•	•	•	0.02	0.11	4.12	0.16	•	•	4.41
Total	•	•	•	•	•	•	•	•	•	0.08	2.42	5.15	61.22	30.20	0.93	•	100.00

Klamath Slide Climatological Wind Rose for February: 1979 - 2015



Joint Frequency Distribution Table

	N	NNE	NE	ENE	E	ESE	SE	SSE	S	SSW	SW	WSW	W	WNW	NW	NNW	Total
calm	0.08	0.09	0.03	0.03	0.08	0.06	0.03	0.06	0.06	0.02	0.03	0.03	0.05	0.05	•	0.03	0.74
0 - 5 kts	0.96	0.88	0.88	1.17	1.07	1.30	1.19	1.28	1.20	1.17	1.11	1.12	0.79	1.04	1.19	1.01	17.37
5 - 10 kts	2.10	2.58	2.45	2.43	4.09	3.73	3.07	2.88	3.11	2.80	2.09	1.30	0.88	1.33	2.54	2.51	39.89
10 - 15 kts	1.49	1.90	1.25	0.79	1.33	1.04	1.94	3.71	4.57	2.26	1.06	0.41	0.30	0.13	0.51	1.50	24.18
15 - 20 kts	0.52	0.30	0.02	•	0.05	0.09	1.04	3.41	3.49	1.52	0.44	0.21	0.06	•	0.05	0.43	11.63
20 - 25 kts	0.03	•	•	•	•	0.03	0.22	1.85	1.80	0.66	0.13	0.02	•	•	•	0.05	4.79
25 - 30 kts	•	•	•	•	•	•	•	0.47	0.49	0.14	0.08	•	•	•	•	•	1.19
30 - 35 kts	•	•	•	•	•	•	•	0.06	0.11	0.03	•	•	•	•	•	•	0.21
35 - 40 kts	•	•	•	•	•	•	•	•	•	0.02	•	•	•	•	•	•	0.02
40 - 45 kts	•	•	•	•	•	•	•	•	•	•	•	•	•	•	•	•	•
45 - 50 kts	•	•	•	•	•	•	•	•	•	•	•	•	•	•	•	•	•
Total	5.18	5.75	4.63	4.42	6.62	6.26	7.49	13.73	14.84	8.61	4.93	3.08	2.09	2.54	4.28	5.53	100.00