

Klamath Slide - January

Latitude: 41.53 N Longitude: 124.25 W

Weather Days

Wave Height > 6.0 ft Mean: 16.8 days Range: 13.0 - 20.6 days p50:25.5 days p75:21.5 days p90:18.5 days

Wave Height > 7.0 ft Mean: 13.3 days Range: 9.0 - 17.7 days p50:22.5 days p75:17.5 days p90:15 days

Wave Height > 8.0 ft Mean: 10.3 days Range: 5.6 - 15.0 days p50:19 days p75:14.5 days p90:11.5 days

Wind Speed > 15.0 knots Mean: 5.0 days Range: 2.0 - 8.0 days p50:5 days p75:3 days p90:1 days

Wind Speed > 20.0 knots Mean: 1.9 days Range: 0.5 - 3.3 days p50:2 days p75:1 days p90:0.5 days

Wind Speed > 25.0 knots Mean: 0.5 days Range: 0.0 - 1.0 days p50:0.5 days p75:0.5 days p90:0.5 days

Working Window

Wave Height < 6.0 ft
A 1 day or longer window will statistically occur 1.3 times per month
A 2 day or longer window will statistically occur 0.7 times per month
A 3 day or longer window will statistically occur 0.3 times per month

Wave Height < 7.0 ft
A 1 day or longer window will statistically occur 1.9 times per month
A 2 day or longer window will statistically occur 1.0 times per month
A 3 day or longer window will statistically occur 0.6 times per month

Wave Height < 8.0 ft
A 1 day or longer window will statistically occur 2.7 times per month
A 2 day or longer window will statistically occur 1.5 times per month
A 3 day or longer window will statistically occur 0.9 times per month

Waves

Mean Height: 8 - 10 ft

The wave heights will occasionally reach > 18 ft, but rarely higher.

Mean Period: 12 - 14 sec

The wave periods will occasionally reach 22 - 24 sec, but rarely longer.

Principle Direction, from: W

WindSea/Swell: 0% / 100%

Winds

Mean Speed: 5 - 10 kts

The winds will occasionally reach 25 - 30 kts, but rarely greater.

Principle Direction, from: SSE

Currents

Mean Speed: 0.25-0.50 kts

The currents will occasionally reach 1.50-1.75 kts, but rarely greater.

Principle Direction, to: N

Weather Days

Current Speed > 1.0 knots Mean: 3.0 days Range: 0.0 - 5.9 days p50:3 days p75:2 days p90:1 days

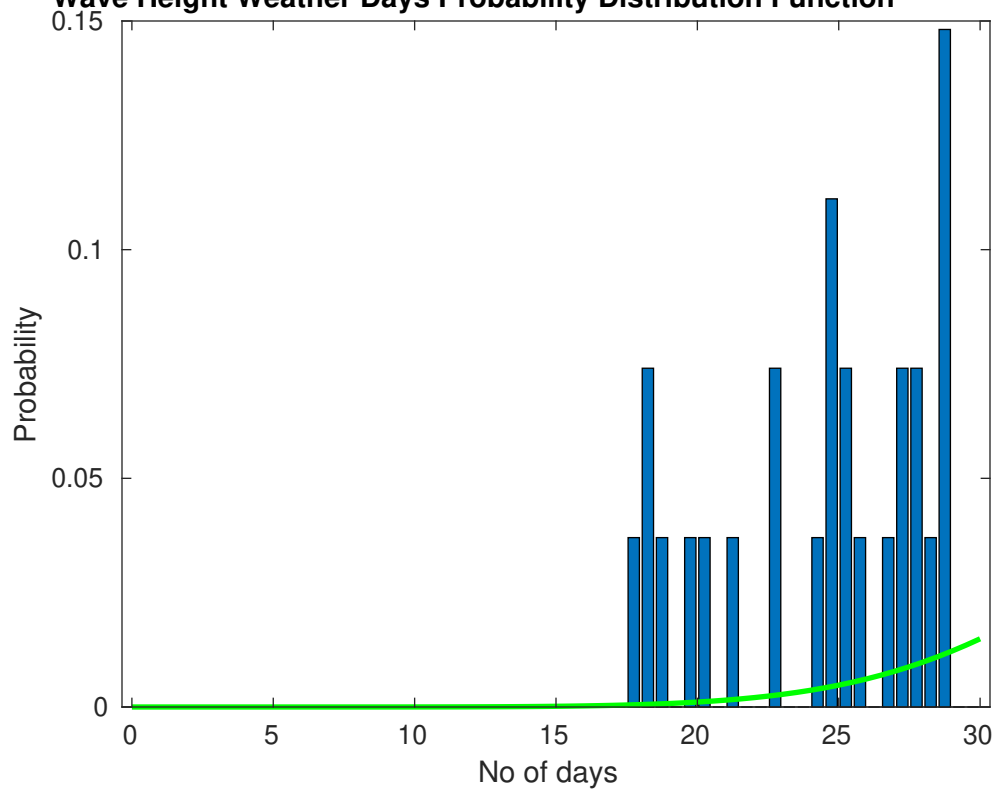
Current Speed > 1.5 knots Mean: 0.9 days Range: 0.0 - 2.2 days p50:2 days p75:1 days p90:1 days

Current Speed > 2.0 knots Mean: 0.2 days Range: 0.0 - 0.6 days p50:1 days p75:1 days p90:1 days

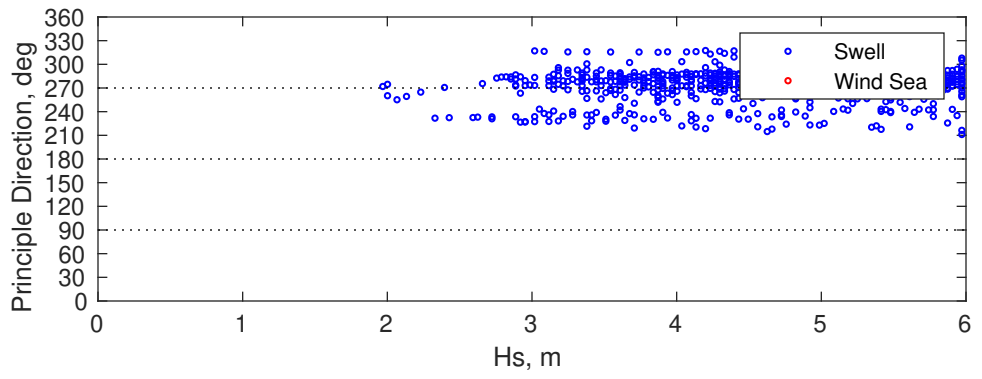
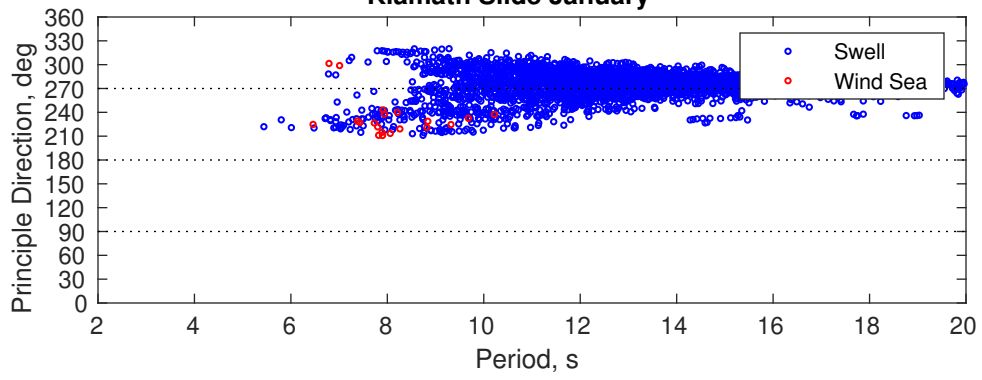
Severe Storms

Severe storms with gale force winds and extreme waves are not expected during this month.

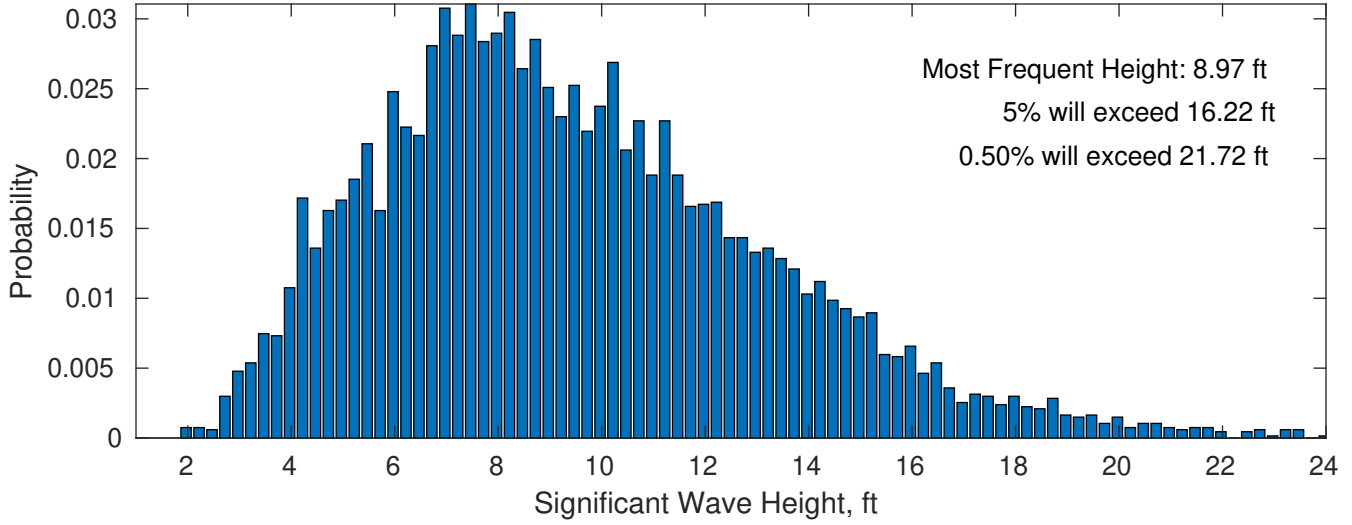
Wave Height Weather Days Probability Distribution Function



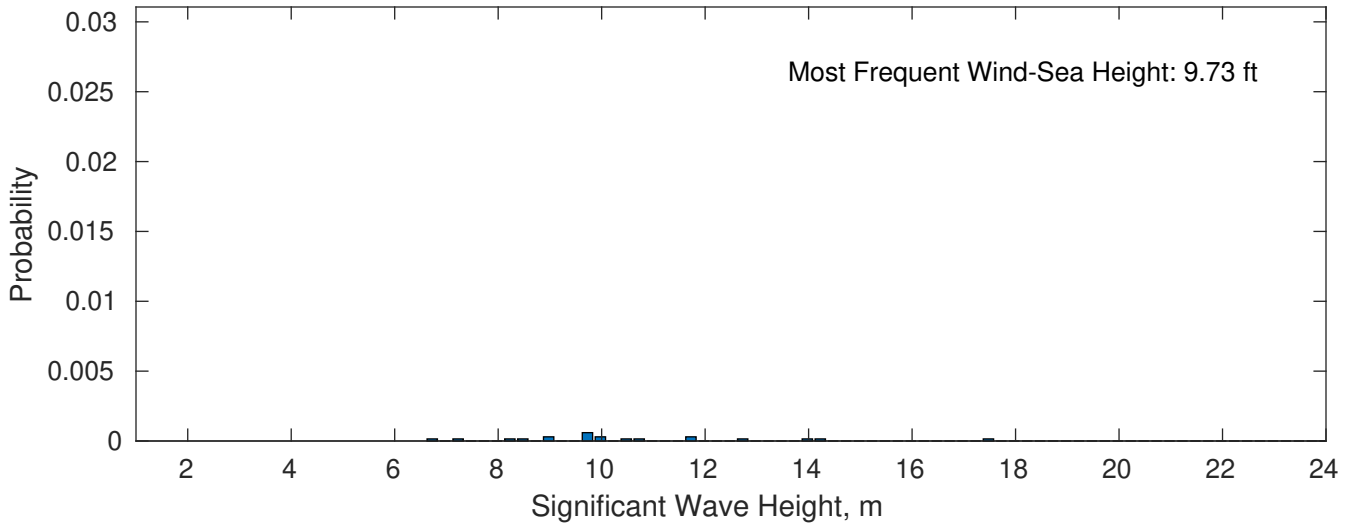
Klamath Slide January



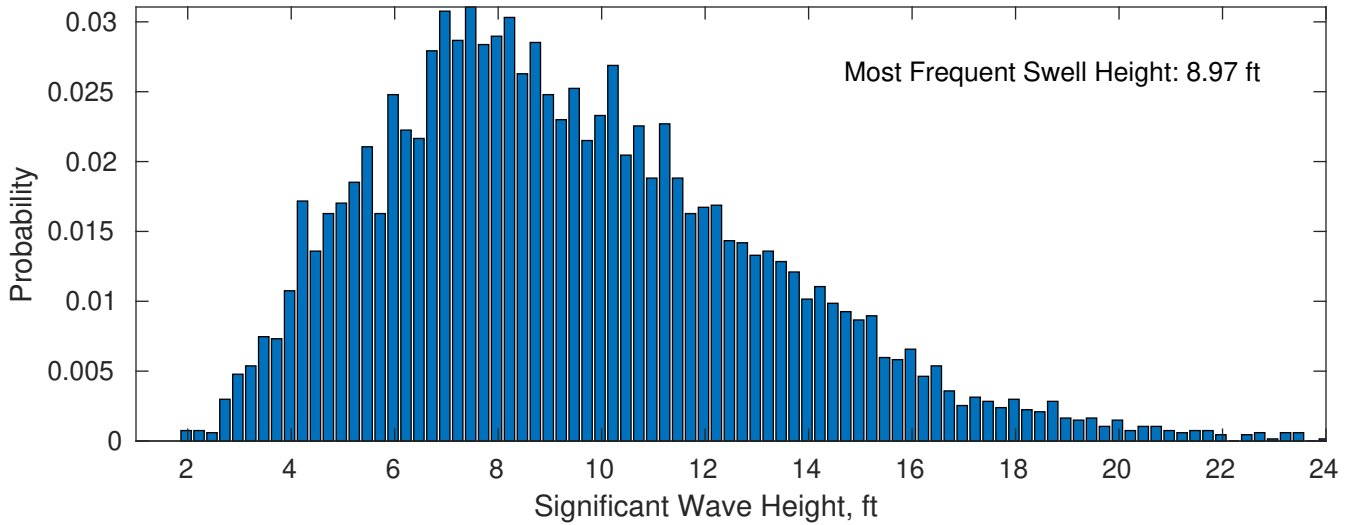
January Wave Height PDF: 1979 - 2015



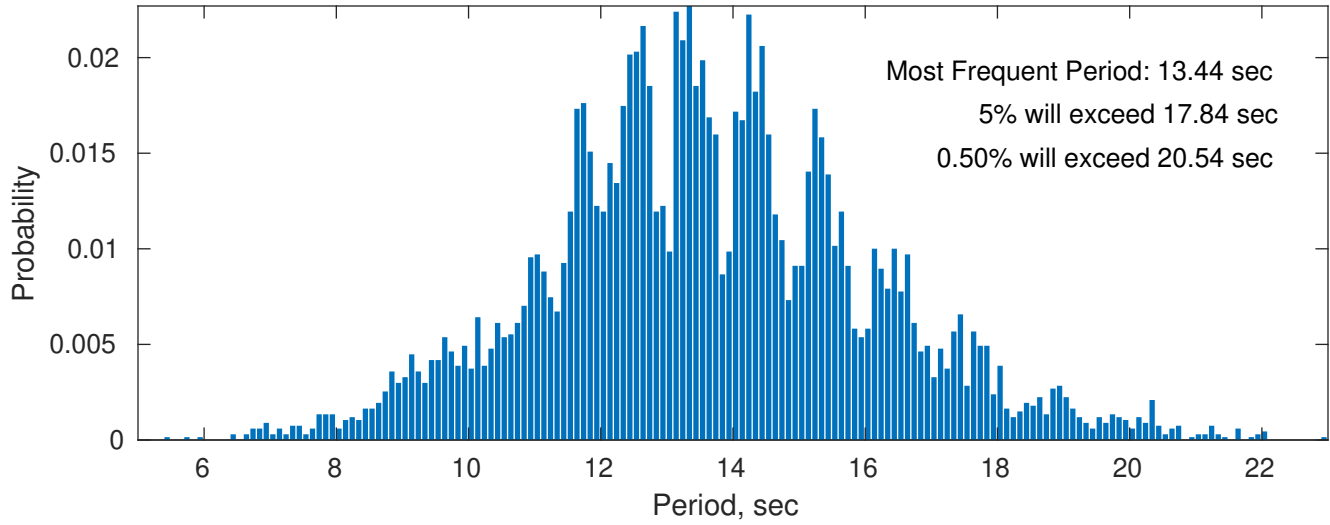
Wind-Sea: 0.30%



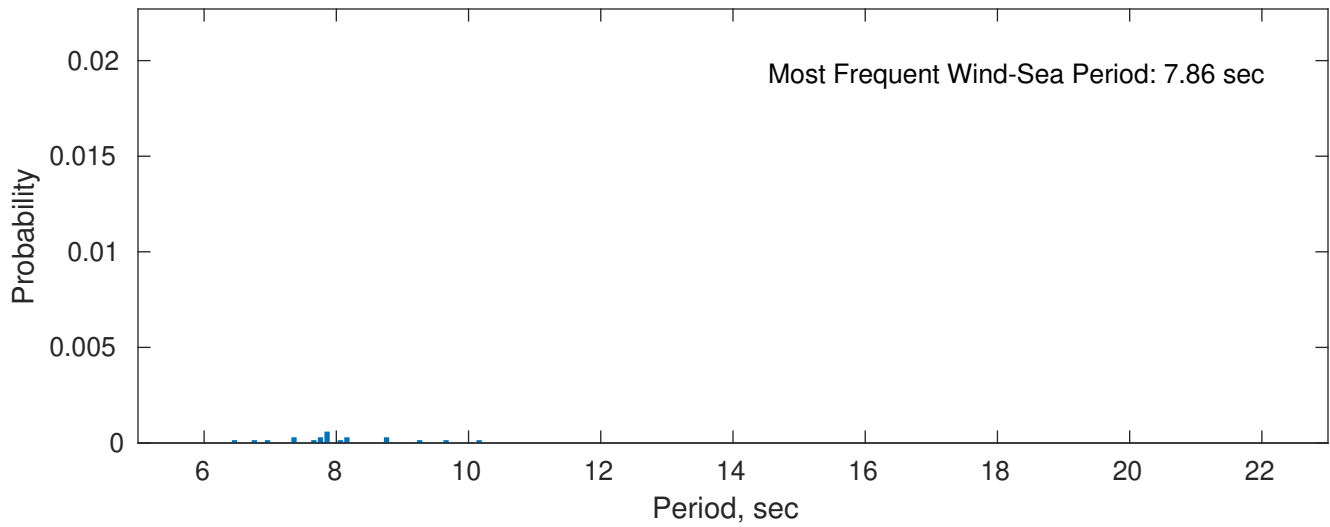
Swell: 99.70%



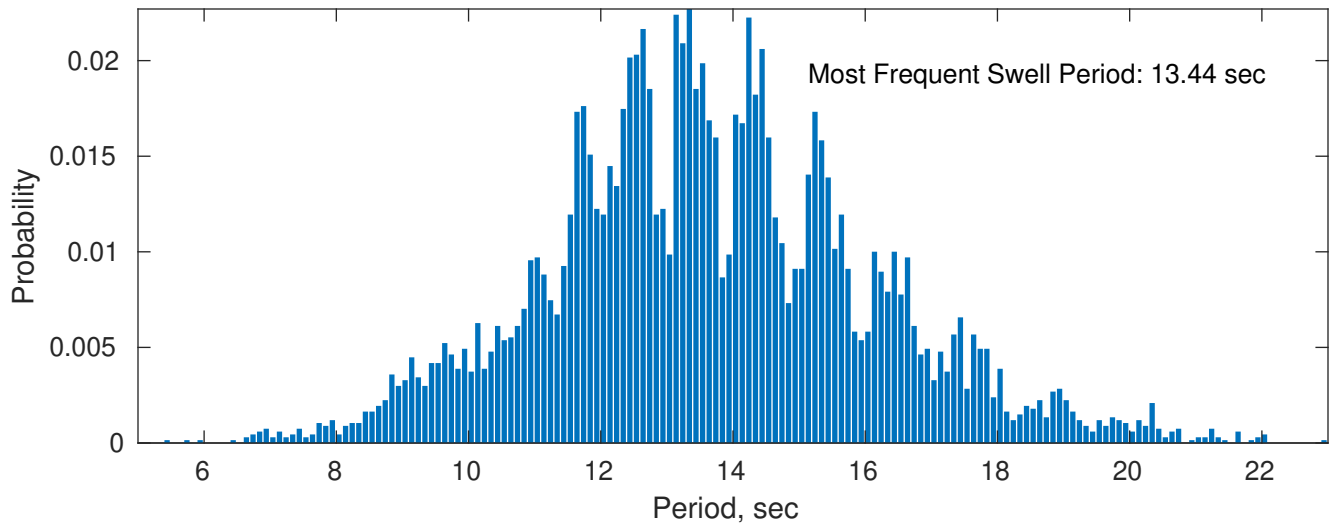
January Peak Wave Period PDF: 1979 - 2015



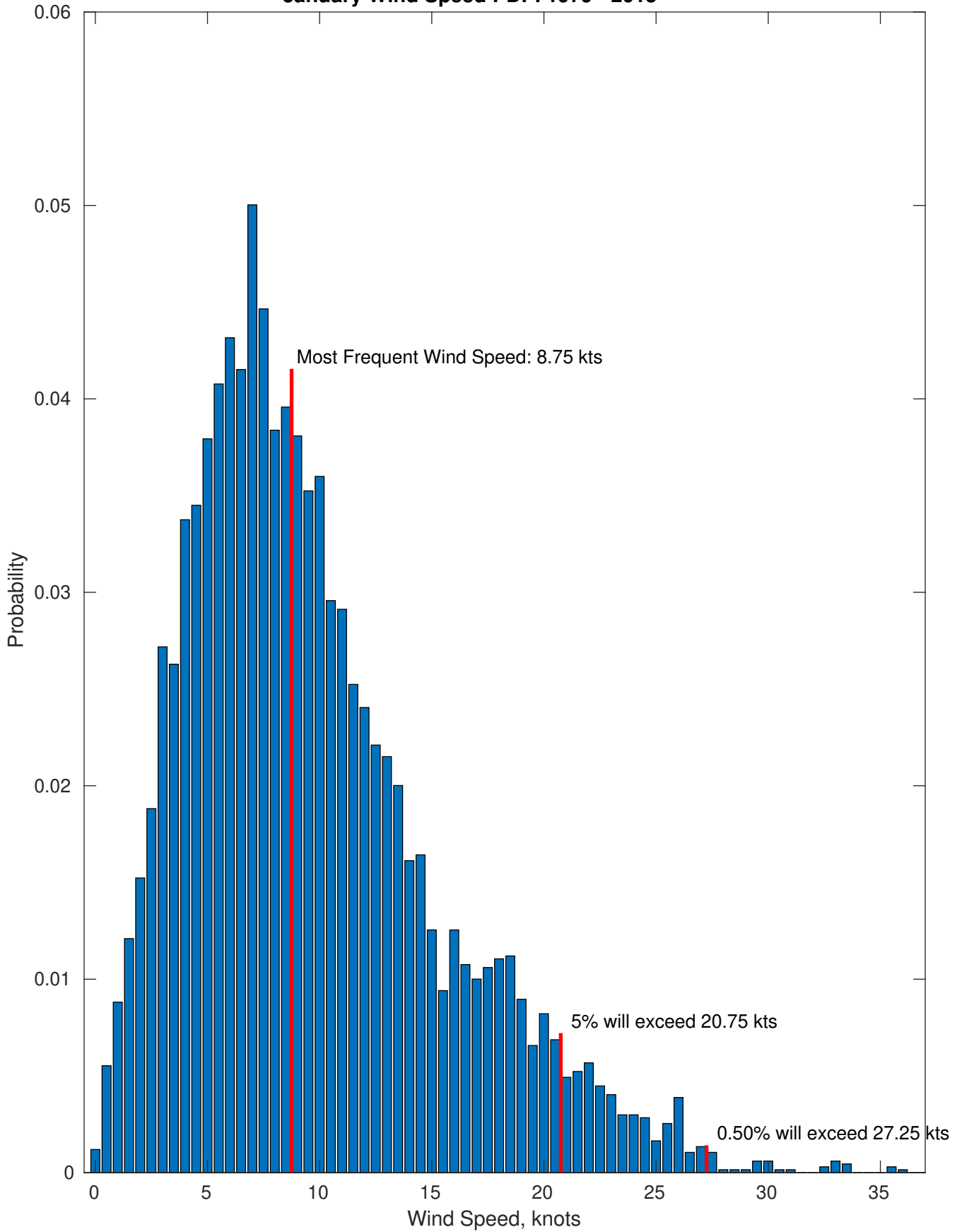
Wind-Sea: 0.30%



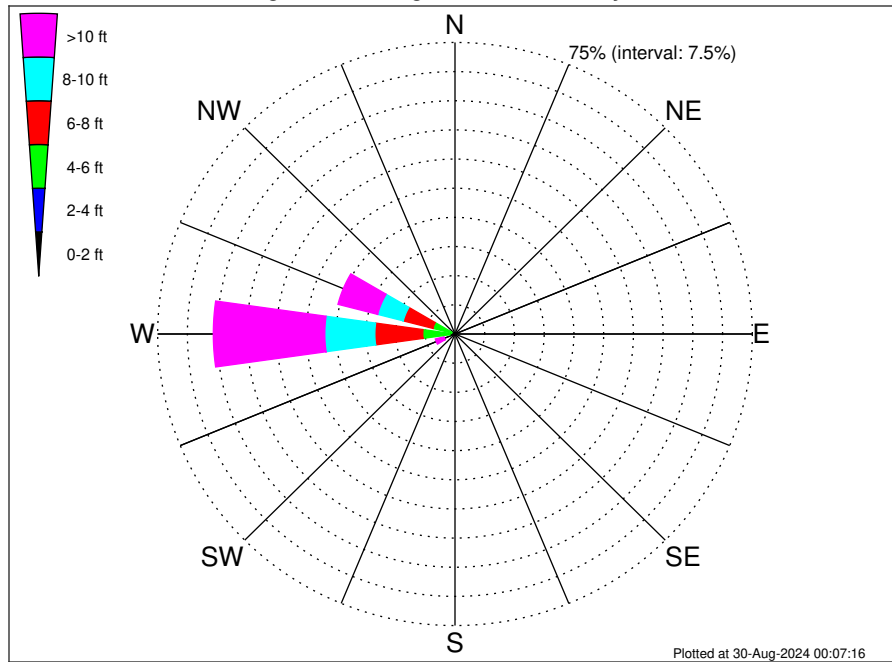
Swell: 99.70%



January Wind Speed PDF: 1979 - 2015



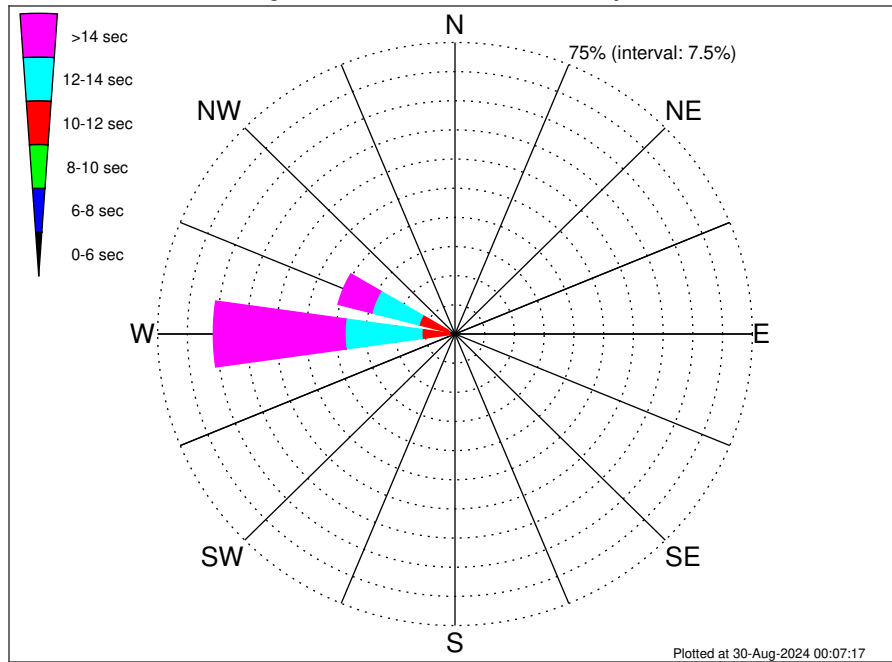
Klamath Slide Climatological WaveHeight Rose for January: 1979 - 2015



Joint Frequency Distribution Table

	N	NNE	NE	ENE	E	ESE	SE	SSE	S	SSW	SW	WSW	W	WNW	NW	NNW	Total
calm	•	•	•	•	•	•	•	•	•	•	•	•	•	•	•	•	•
1 - 2 ft	•	•	•	•	•	•	•	•	•	•	•	•	0.01	•	•	•	0.01
2 - 4 ft	•	•	•	•	•	•	•	•	•	•	0.48	0.27	1.33	0.90	0.13	•	3.11
4 - 6 ft	•	•	•	•	•	•	•	•	•	0.01	0.42	0.66	6.80	4.88	0.60	•	13.37
6 - 8 ft	•	•	•	•	•	•	•	•	•	•	0.64	0.91	12.08	7.71	0.21	•	21.55
8 - 10 ft	•	•	•	•	•	•	•	•	•	0.04	0.39	1.05	12.62	6.68	0.07	•	20.85
10 - 12 ft	•	•	•	•	•	•	•	•	•	0.01	0.21	0.81	10.53	5.41	0.01	•	16.98
12 - 14 ft	•	•	•	•	•	•	•	•	•	•	0.07	0.61	7.59	3.08	0.01	•	11.36
14 - 16 ft	•	•	•	•	•	•	•	•	•	•	0.04	0.39	5.30	1.30	•	•	7.03
16 - 18 ft	•	•	•	•	•	•	•	•	•	•	0.04	0.25	2.27	0.42	•	•	2.99
> 18 ft	•	•	•	•	•	•	•	•	•	•	•	0.18	2.43	0.13	•	•	2.75
Total	•	•	•	•	•	•	•	•	•	0.07	2.30	5.12	60.96	30.50	1.05	•	100.00

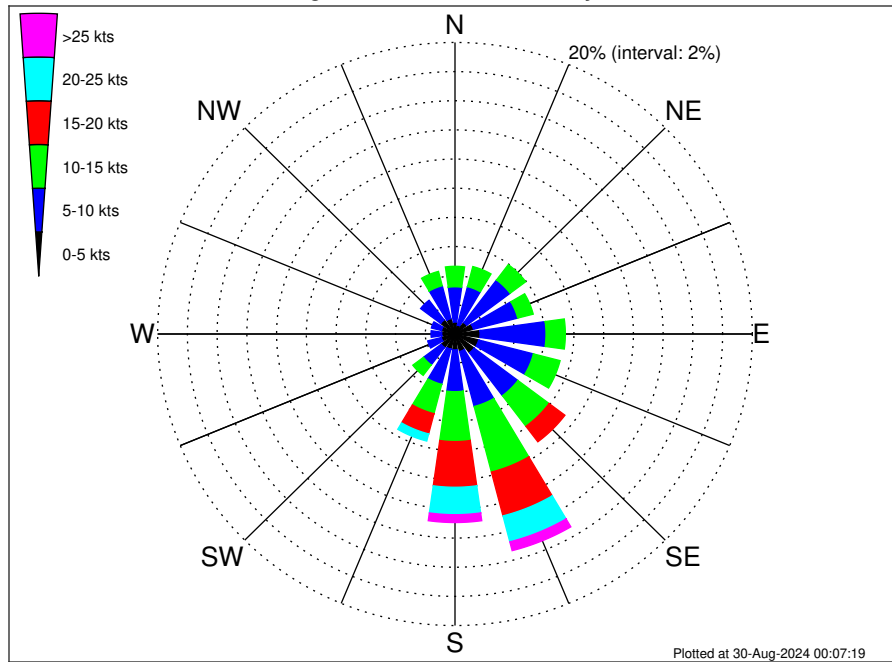
Klamath Slide Climatological WavePeriod Rose for January: 1979 - 2015



Joint Frequency Distribution Table

	N	NNE	NE	ENE	E	ESE	SE	SSE	S	SSW	SW	WSW	W	WNW	NW	NNW	Total
calm	•	•	•	•	•	•	•	•	•	•	•	•	•	•	•	•	•
1 - 2 sec	•	•	•	•	•	•	•	•	•	•	•	•	•	•	•	•	•
2 - 4 sec	•	•	•	•	•	•	•	•	•	•	•	•	•	•	•	•	•
4 - 6 sec	•	•	•	•	•	•	•	•	•	•	0.03	•	•	•	•	•	0.03
6 - 8 sec	•	•	•	•	•	•	•	•	•	0.03	0.60	0.16	0.03	0.07	0.09	•	0.99
8 - 10 sec	•	•	•	•	•	•	•	•	•	0.04	0.75	1.33	1.30	1.72	0.61	•	5.75
10 - 12 sec	•	•	•	•	•	•	•	•	•	•	0.51	1.79	7.03	7.59	0.33	•	17.25
12 - 14 sec	•	•	•	•	•	•	•	•	•	•	0.01	1.25	19.40	12.31	0.01	•	32.99
14 - 16 sec	•	•	•	•	•	•	•	•	•	•	0.31	0.36	18.77	6.91	•	•	26.36
18 - 20 sec	•	•	•	•	•	•	•	•	•	•	0.04	0.19	10.23	1.72	•	•	12.19
22 - 24 sec	•	•	•	•	•	•	•	•	•	•	0.04	0.03	4.20	0.18	•	•	4.45
Total	•	•	•	•	•	•	•	•	•	0.07	2.30	5.12	60.96	30.50	1.05	•	100.00

Klamath Slide Climatological Wind Rose for January: 1979 - 2015



Joint Frequency Distribution Table

	N	NNE	NE	ENE	E	ESE	SE	SSE	S	SSW	SW	WSW	W	WNW	NW	NNW	Total
calm	0.03	•	0.06	0.04	0.01	0.07	0.04	•	0.09	0.04	0.04	0.04	0.03	0.06	0.04	0.04	0.67
0 - 5 kts	0.79	0.64	0.93	1.24	1.67	1.57	1.57	1.24	1.00	1.03	1.12	0.91	0.87	0.88	1.16	1.05	17.67
5 - 10 kts	2.42	2.72	3.66	3.08	4.44	3.81	3.69	3.90	2.87	2.49	1.49	0.94	0.72	0.70	1.69	2.33	40.93
10 - 15 kts	1.40	1.42	1.31	1.08	1.30	1.85	2.63	4.64	3.42	2.08	0.90	0.37	0.19	0.15	0.25	1.02	24.01
15 - 20 kts	0.13	0.06	•	•	0.07	0.22	1.33	3.11	3.14	1.43	0.42	0.15	0.07	0.06	0.04	0.12	10.36
20 - 25 kts	•	•	•	•	•	0.01	0.24	1.84	1.88	0.51	0.16	0.10	0.03	•	0.03	0.01	4.82
25 - 30 kts	•	•	•	•	•	•	0.03	0.49	0.43	0.24	0.04	0.01	•	•	•	•	1.25
30 - 35 kts	•	•	•	•	•	•	0.01	0.10	0.09	0.01	•	•	•	•	•	•	0.22
35 - 40 kts	•	•	•	•	•	•	•	0.03	0.01	•	•	•	•	•	•	•	0.04
40 - 45 kts	•	•	•	•	•	•	•	•	•	•	•	•	•	•	•	•	•
45 - 50 kts	•	•	•	•	•	•	•	•	•	•	•	•	•	•	•	•	•
Total	4.78	4.84	5.96	5.44	7.50	7.54	9.54	15.35	12.93	7.84	4.18	2.54	1.91	1.85	3.23	4.57	100.00