

## Klamath Slide - May

Latitude: 41.53 N Longitude: 124.25 W

### Weather Days

Wave Height > 6.0 ft Mean: 6.5 days Range: 1.8 - 11.1 days p50:11.5 days p75:7 days p90:5.5 days  
Wave Height > 7.0 ft Mean: 3.0 days Range: 0.0 - 6.5 days p50:5.5 days p75:3.5 days p90:1.5 days  
Wave Height > 8.0 ft Mean: 1.4 days Range: 0.0 - 3.6 days p50:4 days p75:2 days p90:0.5 days  
  
Wind Speed > 15.0 knots Mean: 3.1 days Range: 1.3 - 4.9 days p50:3 days p75:2.5 days p90:0.5 days  
Wind Speed > 20.0 knots Mean: 0.3 days Range: 0.0 - 0.6 days p50:0.5 days p75:0.5 days p90:0.5 days  
Wind Speed > 25.0 knots Mean: 0.0 days Range: 0.0 - 0.1 days p50:0.5 days p75:0.5 days p90:0.5 days

### Working Window

Wave Height < 6.0 ft	A 1 day or longer window will statistically occur 3.7 times per month A 2 day or longer window will statistically occur 2.5 times per month A 3 day or longer window will statistically occur 1.8 times per month
Wave Height < 7.0 ft	A 1 day or longer window will statistically occur 3.3 times per month A 2 day or longer window will statistically occur 2.5 times per month A 3 day or longer window will statistically occur 2.1 times per month
Wave Height < 8.0 ft	A 1 day or longer window will statistically occur 2.5 times per month A 2 day or longer window will statistically occur 2.0 times per month A 3 day or longer window will statistically occur 1.8 times per month

### Waves

Mean Height: 4 - 6 ft  
The wave heights will occasionally reach 12 - 14 ft, but rarely higher.  
Mean Period: 10 - 12 sec  
The wave periods will occasionally reach 22 - 24 sec, but rarely longer.  
Principle Direction, from: WNW  
WindSea/Swell: 1% / 99%

### Winds

Mean Speed: 5 - 10 kts  
The winds will occasionally reach 20 - 25 kts, but rarely greater.  
Principle Direction, from: NNW

### Currents

Mean Speed: 0.25-0.50 kts  
The currents will occasionally reach 1.00-1.25 kts, but rarely greater.  
Principle Direction, to: S

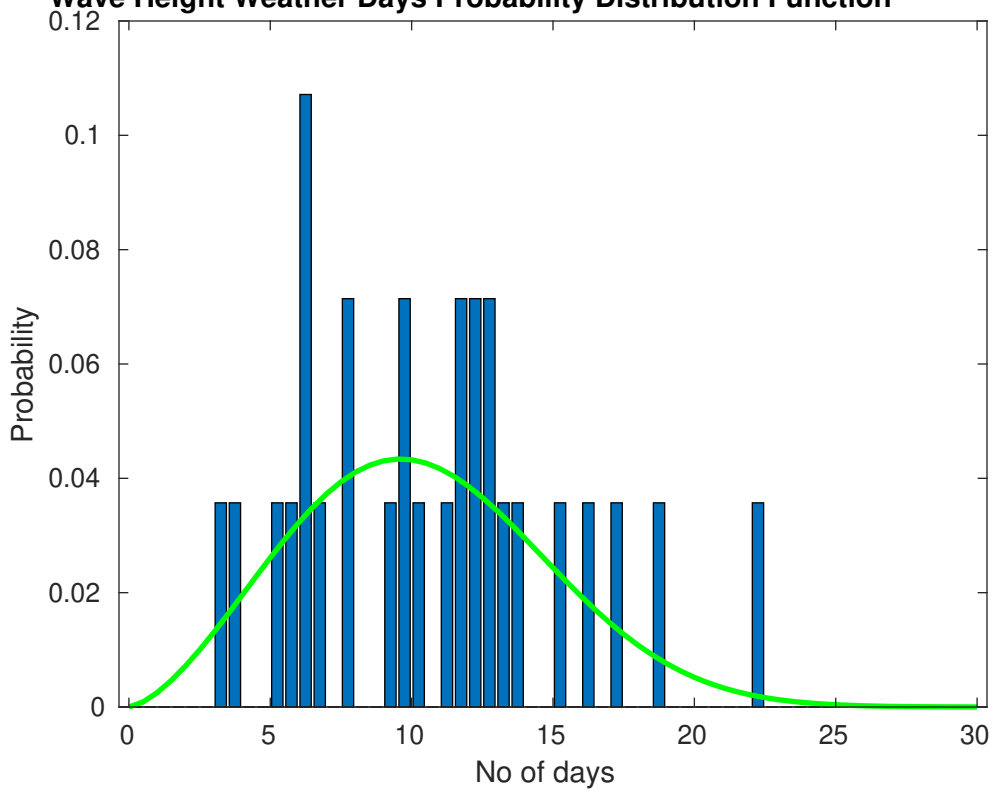
#### Weather Days

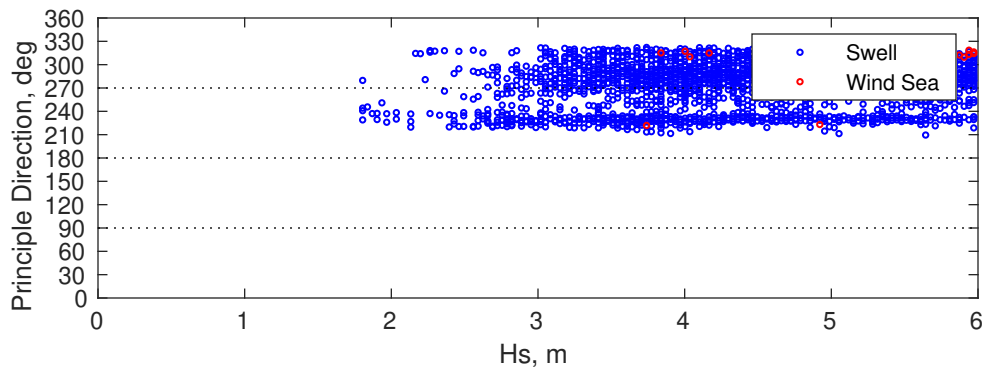
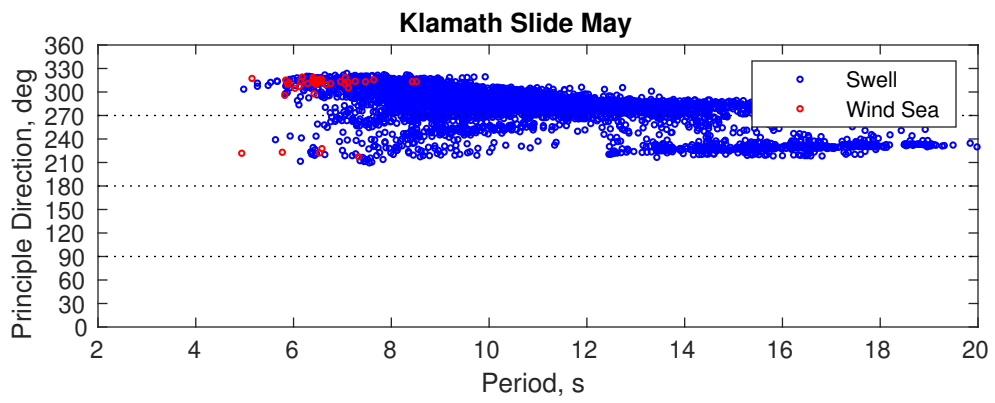
Current Speed > 1.0 knots Mean: 6.8 days Range: 1.7 - 11.9 days p50:6 days p75:4 days p90:2 days  
Current Speed > 1.5 knots Mean: 0.5 days Range: 0.0 - 1.1 days p50:1 days p75:1 days p90:1 days  
Current Speed > 2.0 knots Mean: 0.0 days Range: 0.0 - 0.0 days p50:1 days p75:1 days p90:1 days

### Severe Storms

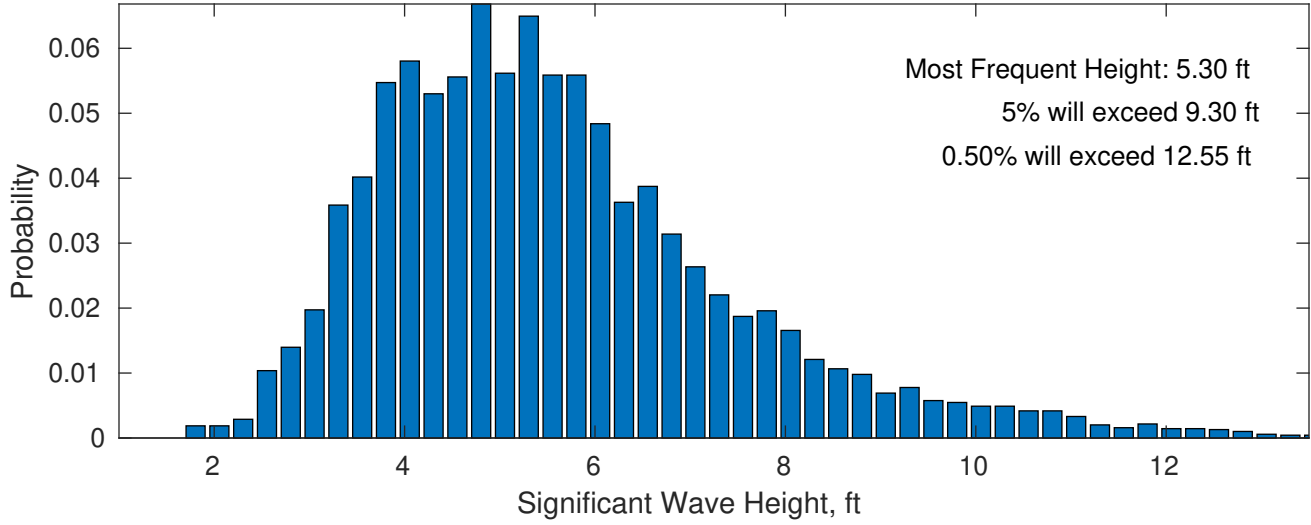
Severe storms with gale force winds and extreme waves are not expected during this month.

**Wave Height Weather Days Probability Distribution Function**

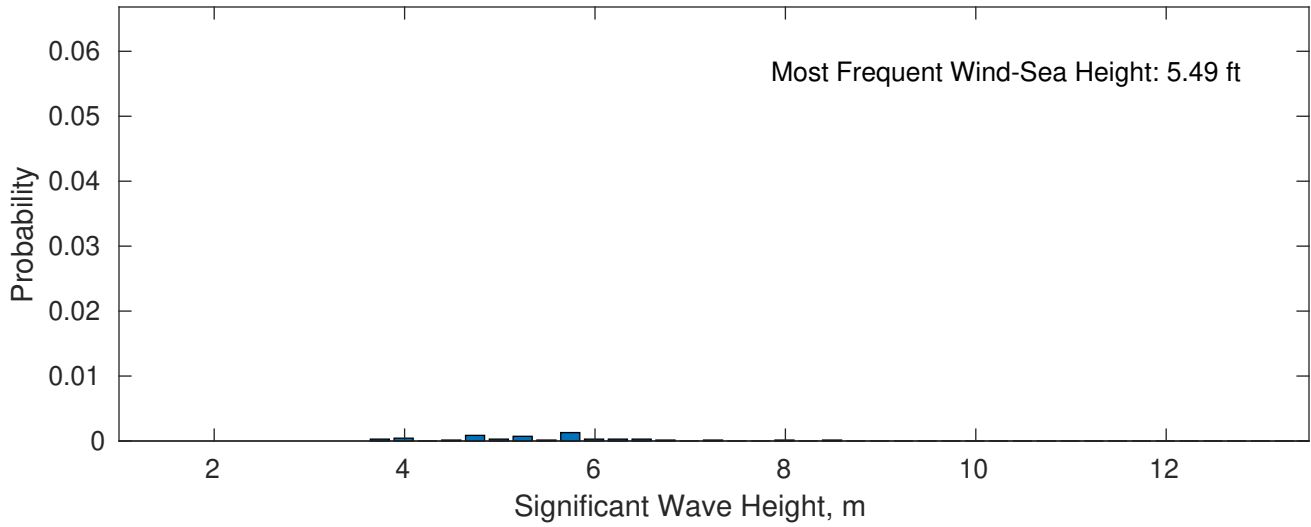




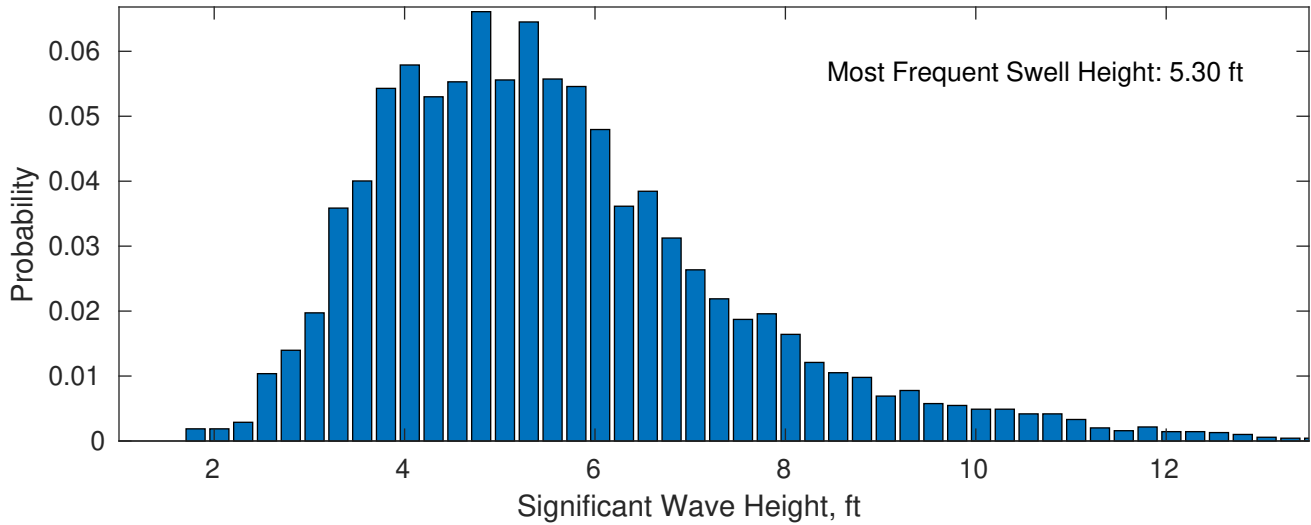
**May Wave Height PDF: 1979 - 2015**



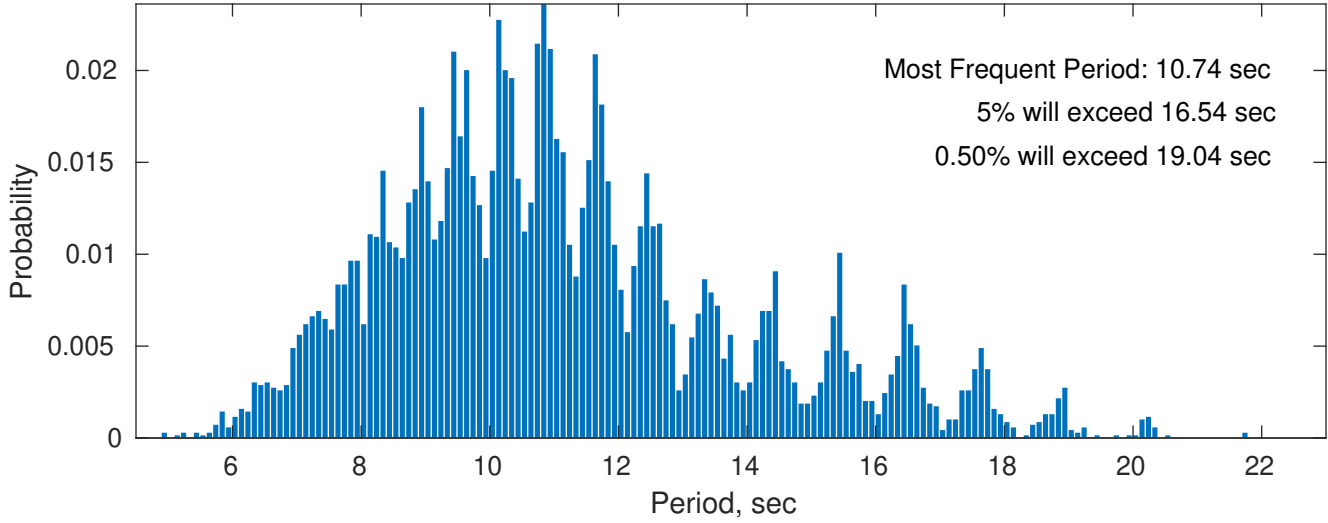
**Wind-Sea: 0.56%**



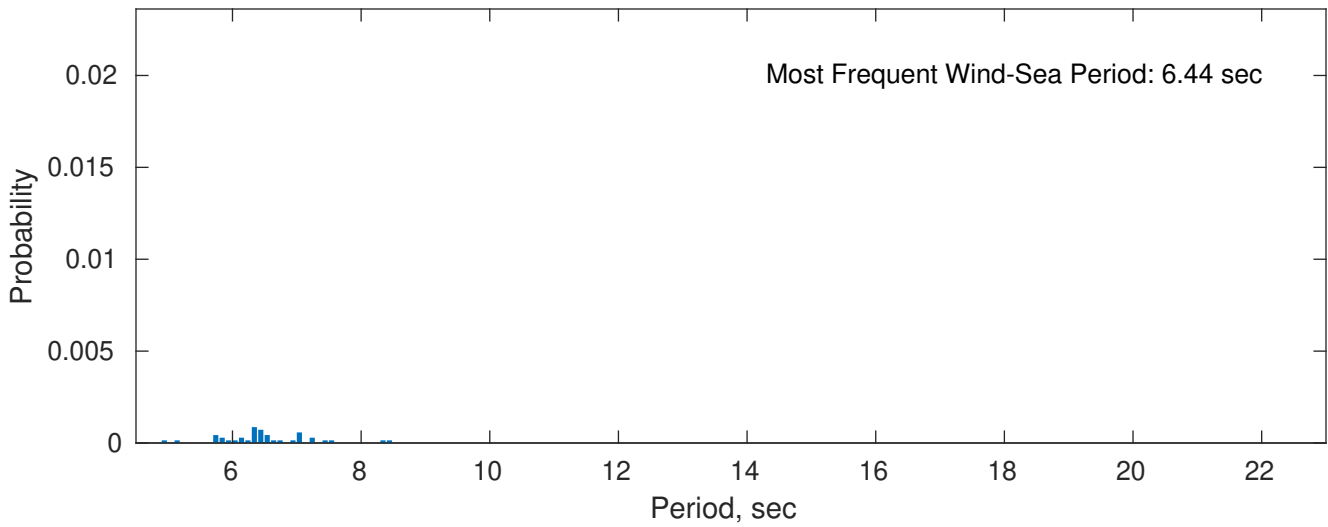
**Swell: 99.44%**



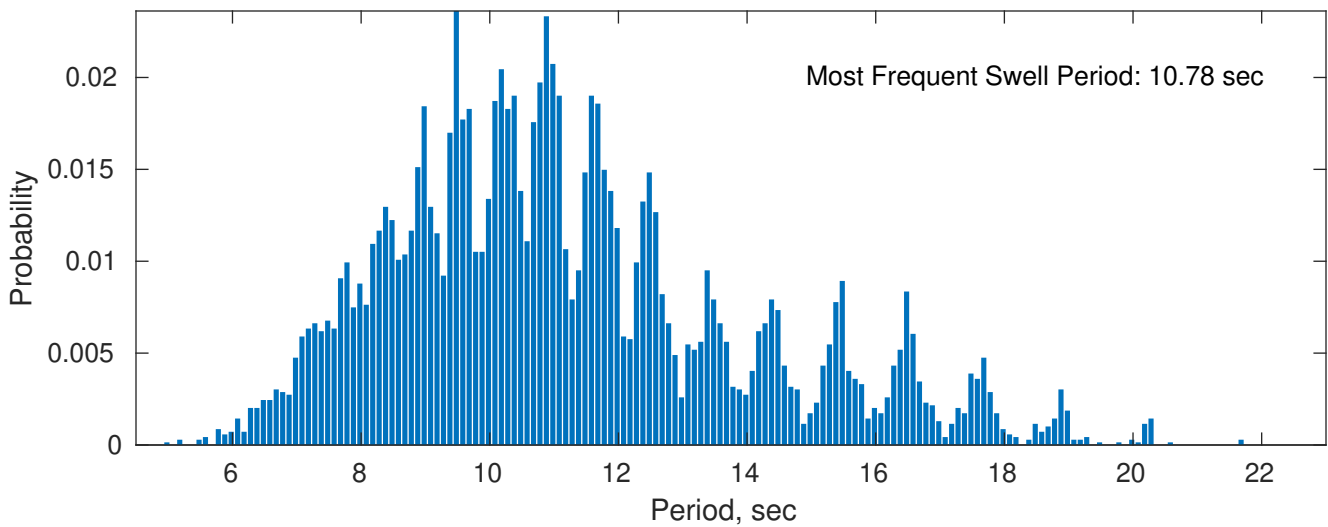
**May Peak Wave Period PDF: 1979 - 2015**



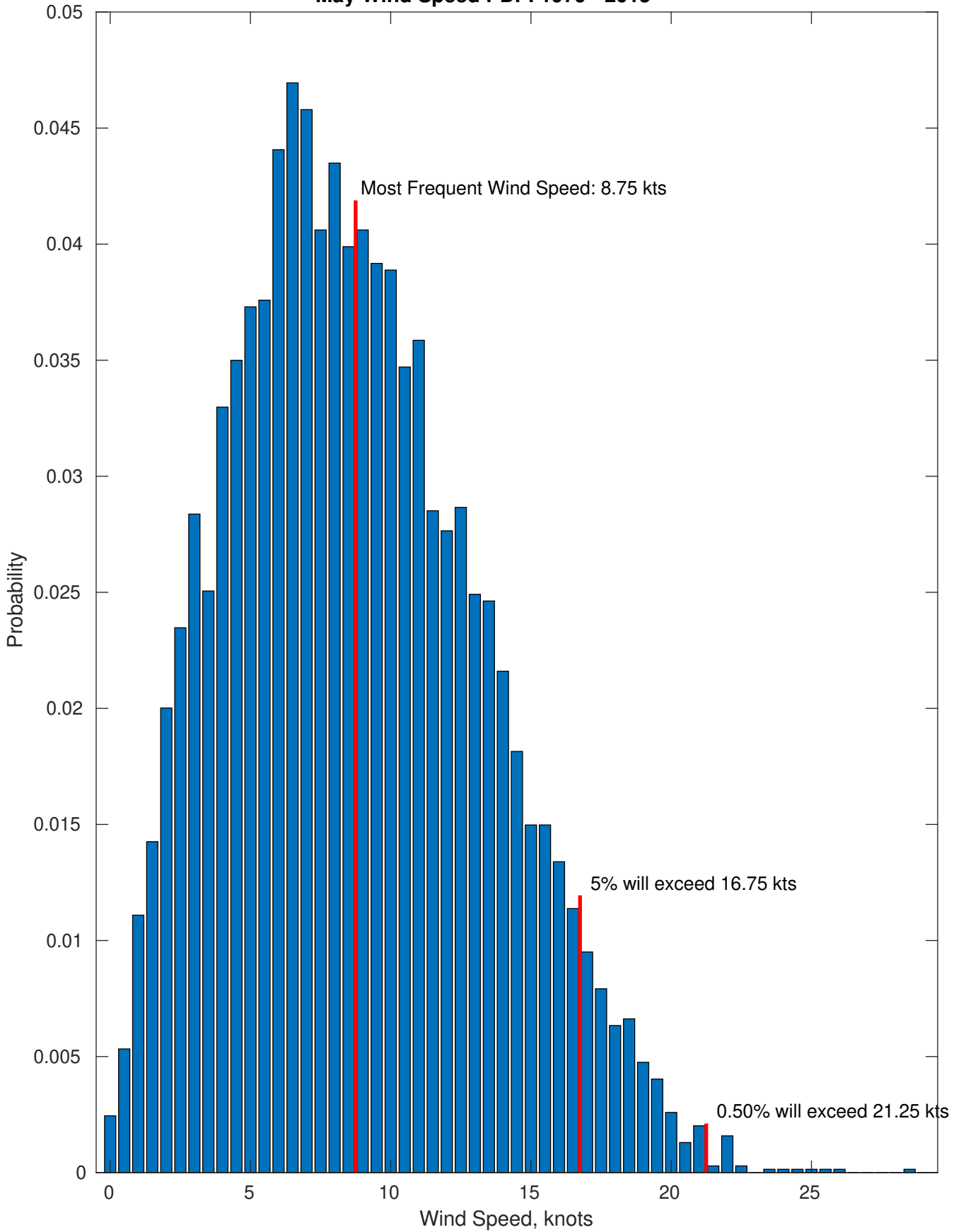
**Wind-Sea: 0.56%**



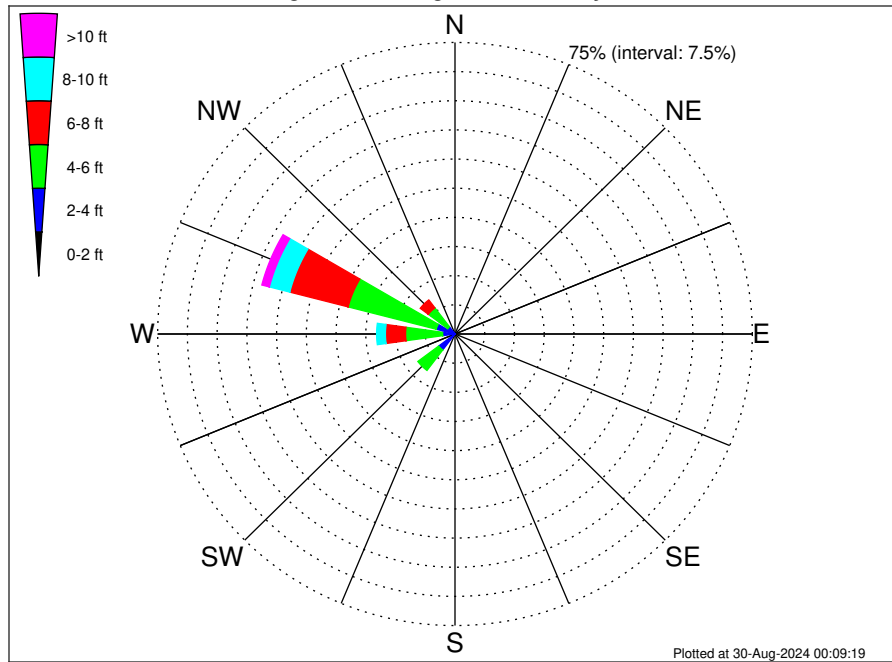
**Swell: 99.44%**



May Wind Speed PDF: 1979 - 2015



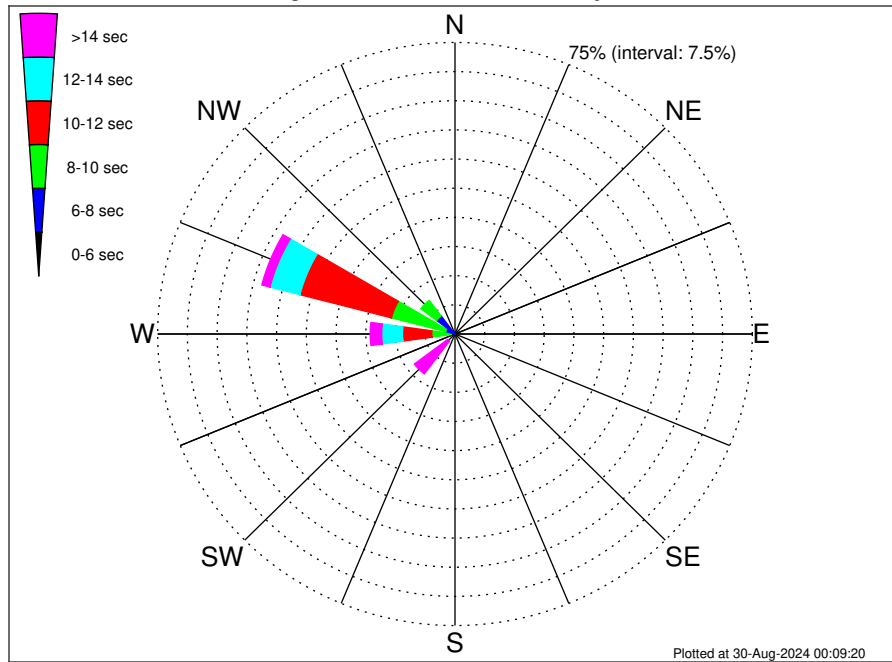
Klamath Slide Climatological WaveHeight Rose for May: 1979 - 2015



Joint Frequency Distribution Table

	N	NNE	NE	ENE	E	ESE	SE	SSE	S	SSW	SW	WSW	W	WNW	NW	NNW	Total
calm	•	•	•	•	•	•	•	•	•	•	•	•	•	•	•	•	•
1 - 2 ft	•	•	•	•	•	•	•	•	•	•	0.04	0.10	0.01	•	•	•	0.16
2 - 4 ft	•	•	•	•	•	•	•	•	•	0.04	5.11	1.05	3.12	4.90	2.33	•	16.56
4 - 6 ft	•	•	•	•	•	•	•	•	•	0.03	6.58	1.79	9.33	22.96	6.09	•	46.77
6 - 8 ft	•	•	•	•	•	•	•	•	•	0.03	0.98	1.08	5.08	15.21	2.55	•	24.93
8 - 10 ft	•	•	•	•	•	•	•	•	•	•	0.13	0.14	2.22	5.31	0.12	•	7.92
10 - 12 ft	•	•	•	•	•	•	•	•	•	•	•	0.04	0.91	1.80	0.01	•	2.76
12 - 14 ft	•	•	•	•	•	•	•	•	•	•	•	0.01	0.58	0.16	•	•	0.75
14 - 16 ft	•	•	•	•	•	•	•	•	•	•	•	•	0.14	•	•	•	0.14
16 - 18 ft	•	•	•	•	•	•	•	•	•	•	•	•	•	•	•	•	•
> 18 ft	•	•	•	•	•	•	•	•	•	•	•	•	•	•	•	•	•
Total	•	•	•	•	•	•	•	•	•	0.10	12.85	4.22	21.40	50.33	11.10	•	100.00

Klamath Slide Climatological WavePeriod Rose for May: 1979 - 2015

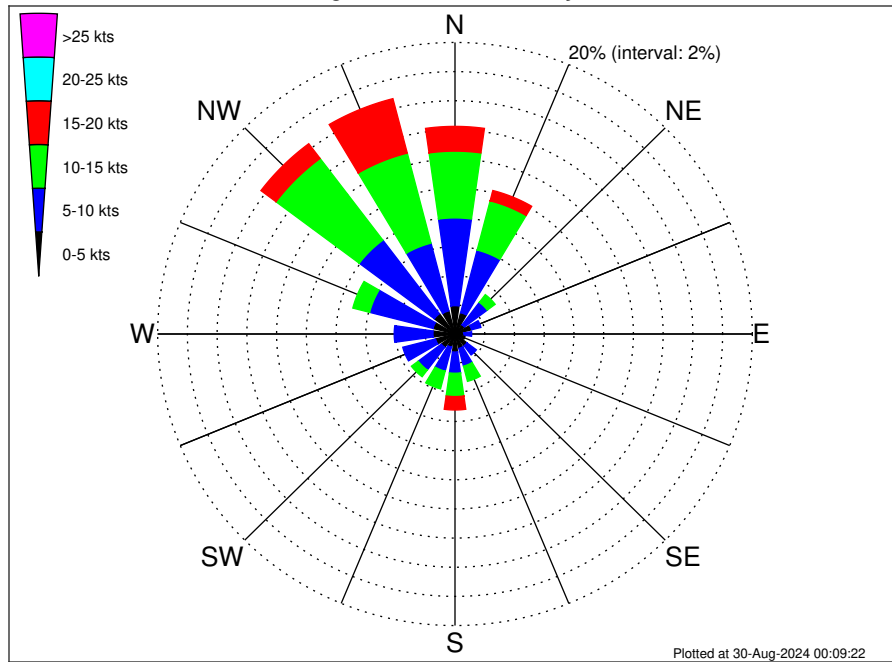


Joint Frequency Distribution Table

	N	NNE	NE	ENE	E	ESE	SE	SSE	S	SSW	SW	WSW	W	WNW	NW	NNW	Total
calm	•	•	•	•	•	•	•	•	•	•	•	•	•	•	•	•	•
1 - 2 sec	•	•	•	•	•	•	•	•	•	•	•	•	•	•	•	•	•
2 - 4 sec	•	•	•	•	•	•	•	•	•	•	•	•	•	•	•	•	•
4 - 6 sec	•	•	•	•	•	•	•	•	•	•	0.03	0.03	•	0.06	0.27	•	0.39
6 - 8 sec	•	•	•	•	•	•	•	•	•	0.10	0.46	0.33	0.94	2.39	5.54	•	9.76
8 - 10 sec	•	•	•	•	•	•	•	•	•	•	0.55	1.51	4.93	14.11	4.98	•	26.08
10 - 12 sec	•	•	•	•	•	•	•	•	•	•	0.12	0.84	7.37	23.85	0.29	•	32.46
12 - 14 sec	•	•	•	•	•	•	•	•	•	•	1.21	0.36	5.26	7.81	0.01	•	14.65
14 - 16 sec	•	•	•	•	•	•	•	•	•	•	4.61	0.58	2.06	1.74	•	•	8.99
18 - 20 sec	•	•	•	•	•	•	•	•	•	•	4.62	0.42	0.69	0.35	•	•	6.08
22 - 24 sec	•	•	•	•	•	•	•	•	•	•	1.25	0.16	0.16	0.03	•	•	1.60
Total	•	•	•	•	•	•	•	•	•	0.10	12.85	4.22	21.40	50.33	11.10	•	100.00



Klamath Slide Climatological Wind Rose for May: 1979 - 2015



Joint Frequency Distribution Table

	N	NNE	NE	ENE	E	ESE	SE	SSE	S	SSW	SW	WSW	W	WNW	NW	NNW	Total
calm	0.04	0.06	0.04	0.04	0.04	0.06	0.07	0.04	0.01	0.04	0.07	0.06	0.03	0.04	0.04	0.07	0.78
0 - 5 kts	1.90	1.45	0.75	1.11	0.56	0.63	0.94	0.98	1.22	0.89	1.08	1.30	1.45	1.48	1.70	1.57	19.02
5 - 10 kts	6.02	4.44	1.93	0.65	0.52	0.45	0.79	1.25	1.45	1.70	1.94	2.28	2.61	4.41	6.32	4.80	41.55
10 - 15 kts	4.58	3.49	0.66	0.10	0.03	0.06	0.09	1.08	1.60	1.25	0.58	0.23	0.06	1.17	7.01	6.38	28.36
15 - 20 kts	1.70	0.73	0.01	.	.	.	.	0.39	0.92	0.46	0.03	.	0.01	.	1.27	3.86	9.39
20 - 25 kts	0.13	.	.	.	.	.	.	0.10	0.12	0.04	0.01	.	.	.	0.01	0.43	0.85
25 - 30 kts	.	.	.	.	.	.	.	0.03	0.03	.	.	.	.	.	.	.	0.06
30 - 35 kts	.	.	.	.	.	.	.	.	.	.	.	.	.	.	.	.	.
35 - 40 kts	.	.	.	.	.	.	.	.	.	.	.	.	.	.	.	.	.
40 - 45 kts	.	.	.	.	.	.	.	.	.	.	.	.	.	.	.	.	.
45 - 50 kts	.	.	.	.	.	.	.	.	.	.	.	.	.	.	.	.	.
Total	14.37	10.17	3.40	1.90	1.15	1.20	1.89	3.87	5.36	4.39	3.72	3.86	4.16	7.10	16.36	17.11	100.00