

OCS A-0501 North - April

Weather Days

Wave Height > 5.0 ft Mean: 11.6 days Range: 7.7 - 15.5 days p50: 12 days p90: 19 days

Wave Height > 6.0 ft Mean: 8.0 days Range: 4.8 - 11.2 days p50: 8 days p90: 14 days

Wave Height > 7.0 ft Mean: 5.3 days Range: 2.9 - 7.8 days p50: 6 days p90: 10 days

Working Window Probability

Wave Height < 5.0 ft 3 days or longer: 43%

5 days or longer: 10%

7 days or longer: 4%

Wave Height < 6.0 ft 3 days or longer: 55%

5 days or longer: 21%

7 days or longer: 11%

Wave Height < 7.0 ft 3 days or longer: 68%

5 days or longer: 33%

7 days or longer: 20%

Waves

Mean Height: 4 - 6 ft

The wave heights will occasionally reach 12 - 14 ft, but rarely higher.

Mean Period: 6 - 8 sec

The wave periods will occasionally reach 12 - 14 sec, but rarely longer.

Principle Direction, from: SSW

WindSea/Swell: 29% / 71%

Winds

Mean Speed: 10 - 15 kts

The winds will occasionally reach 35 - 40 kts, but rarely greater.

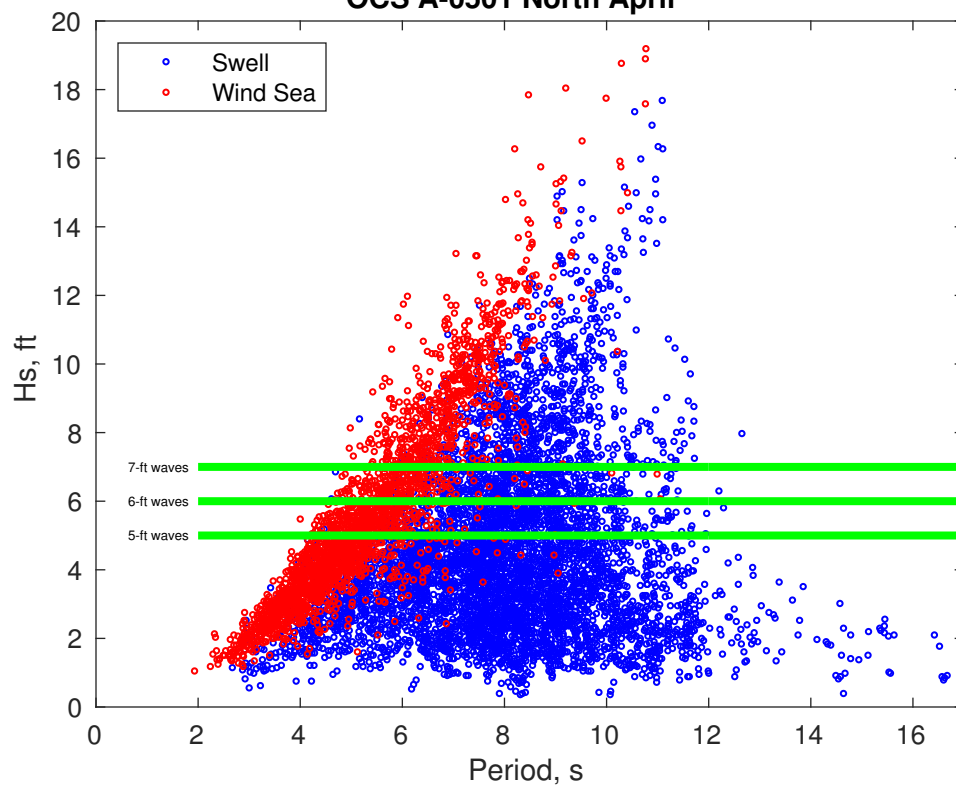
Principle Direction, from: SW

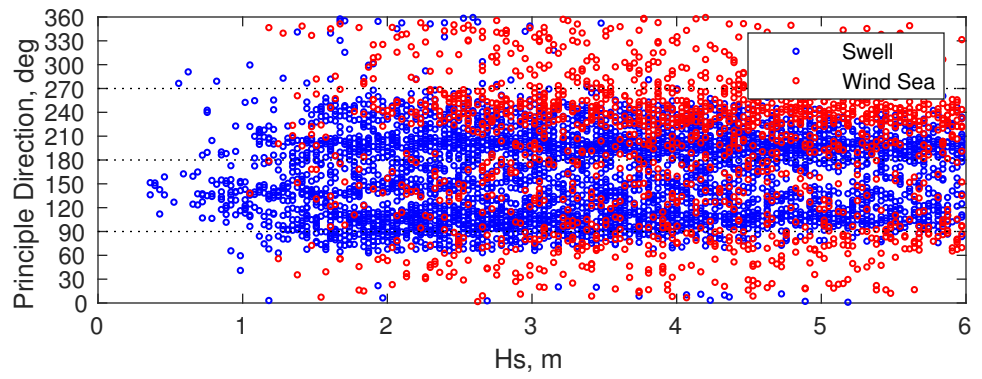
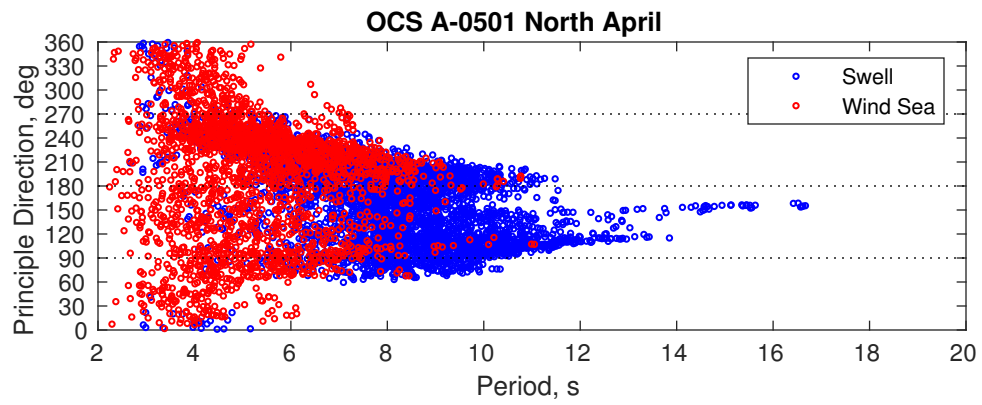
Severe Storms

There is a 43 % chance of a storm with winds peaking above 34 kts.

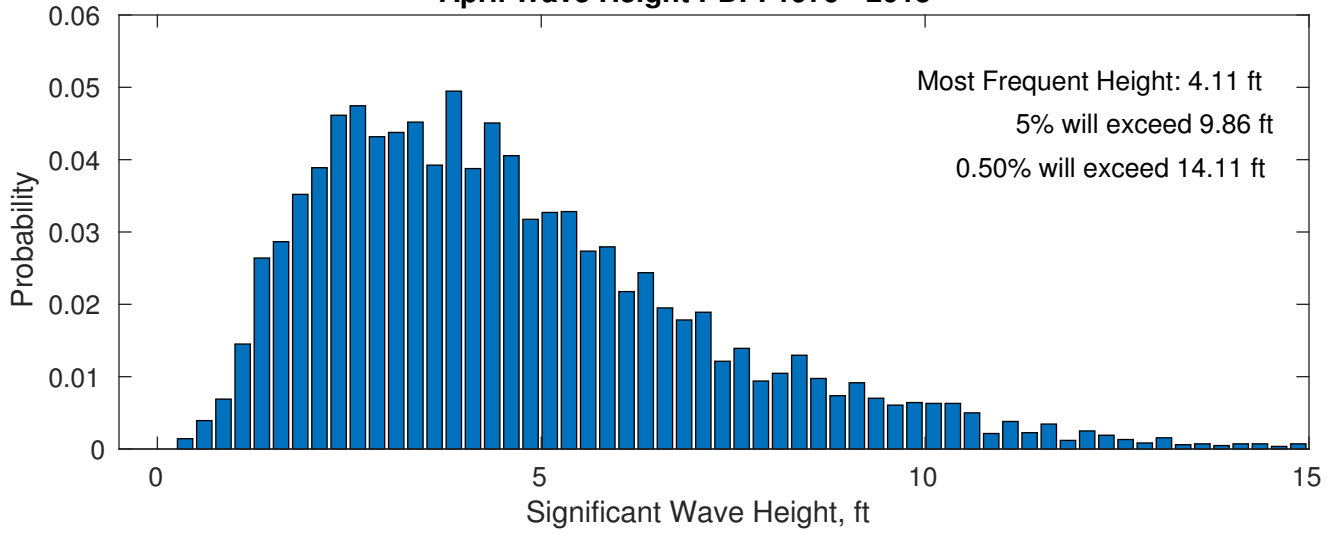
There is a 43 % chance of a storm with waves peaking at 4m (13 ft) or greater.

OCS A-0501 North April

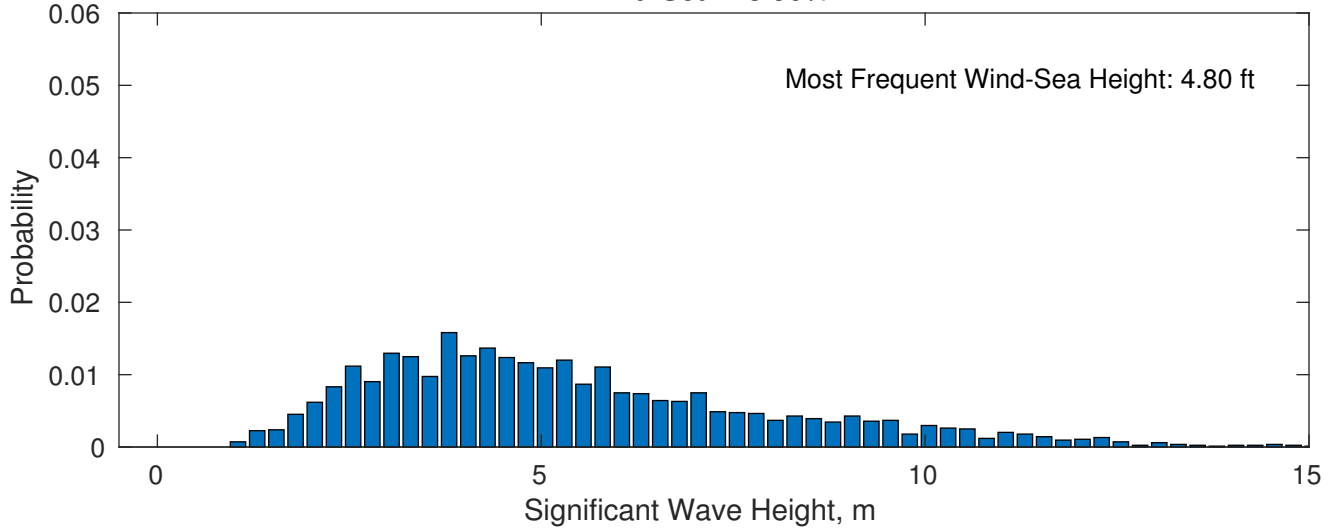




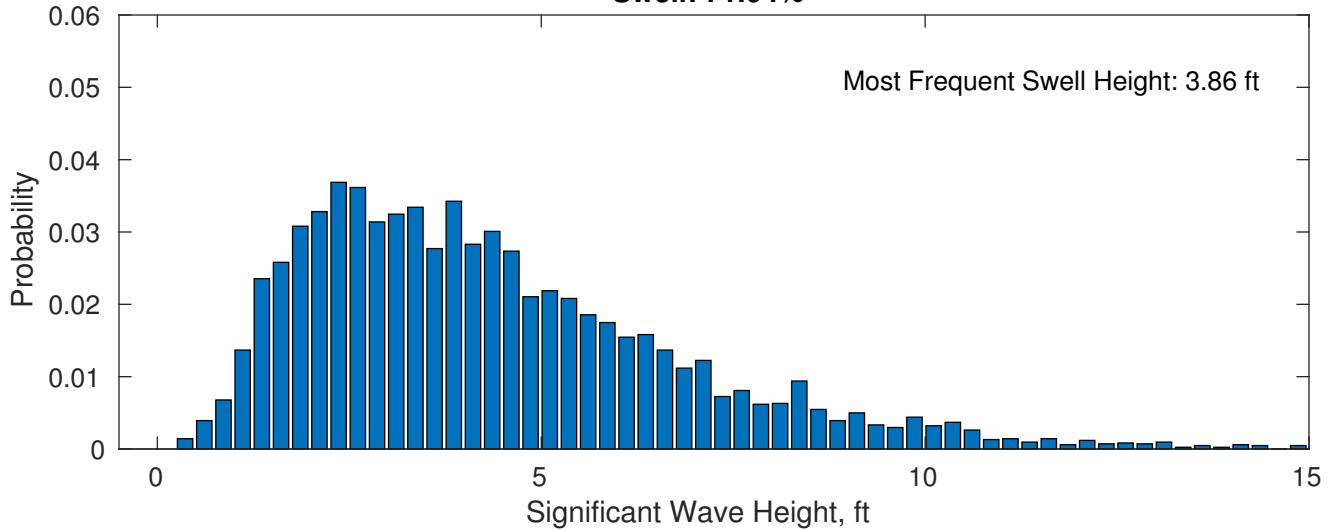
April Wave Height PDF: 1979 - 2015



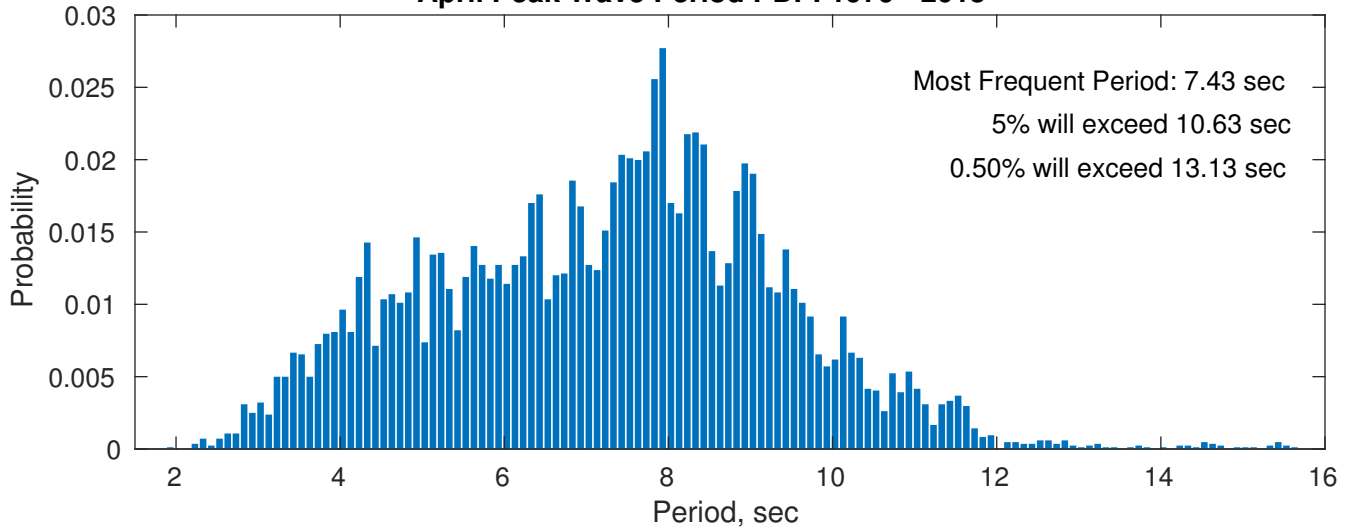
Wind-Sea: 28.96%



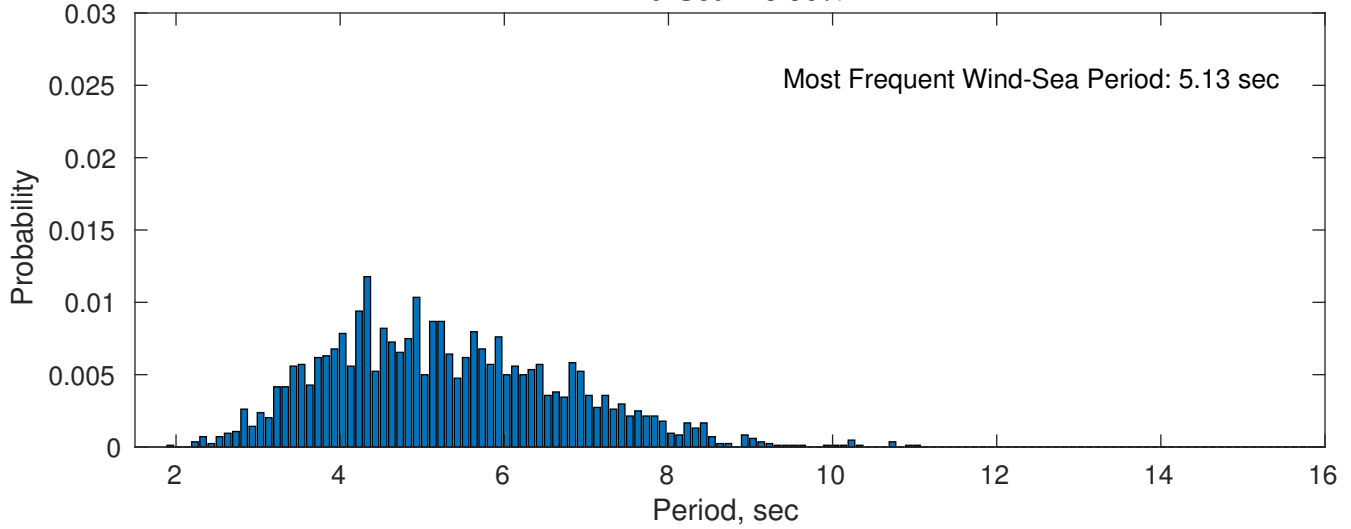
Swell: 71.04%



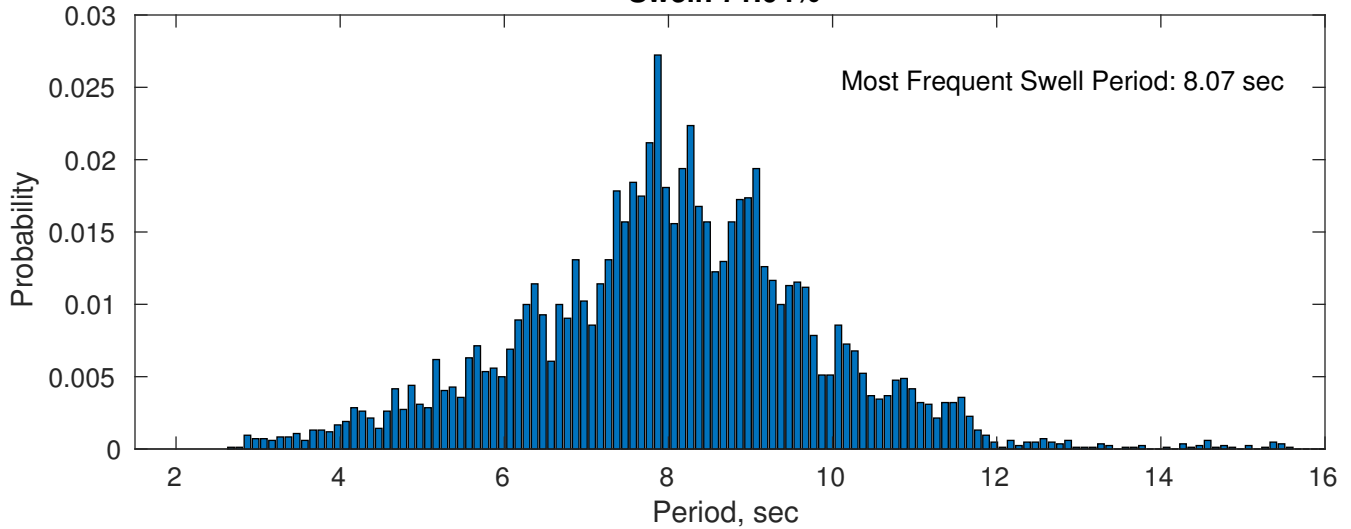
April Peak Wave Period PDF: 1979 - 2015



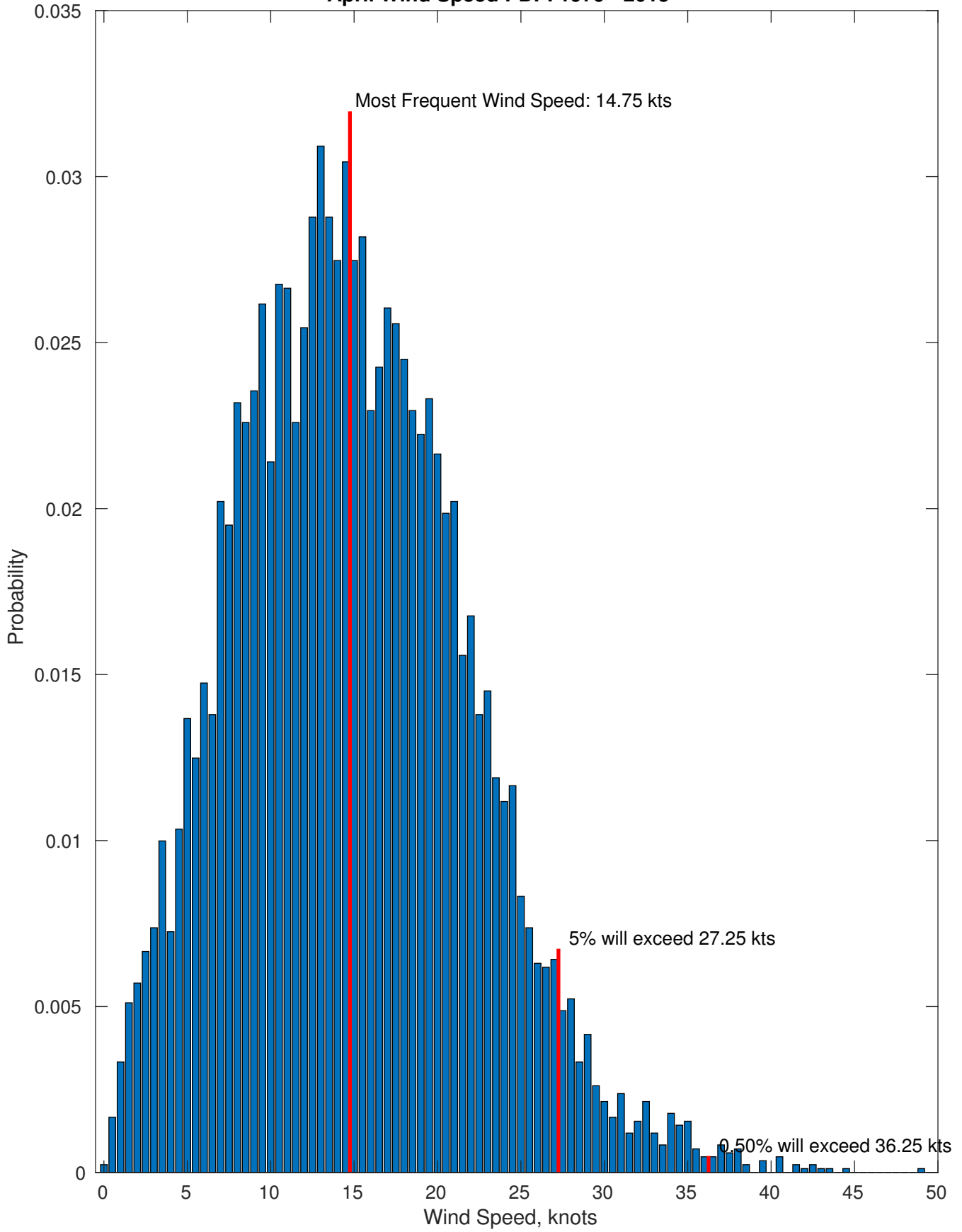
Wind-Sea: 28.96%



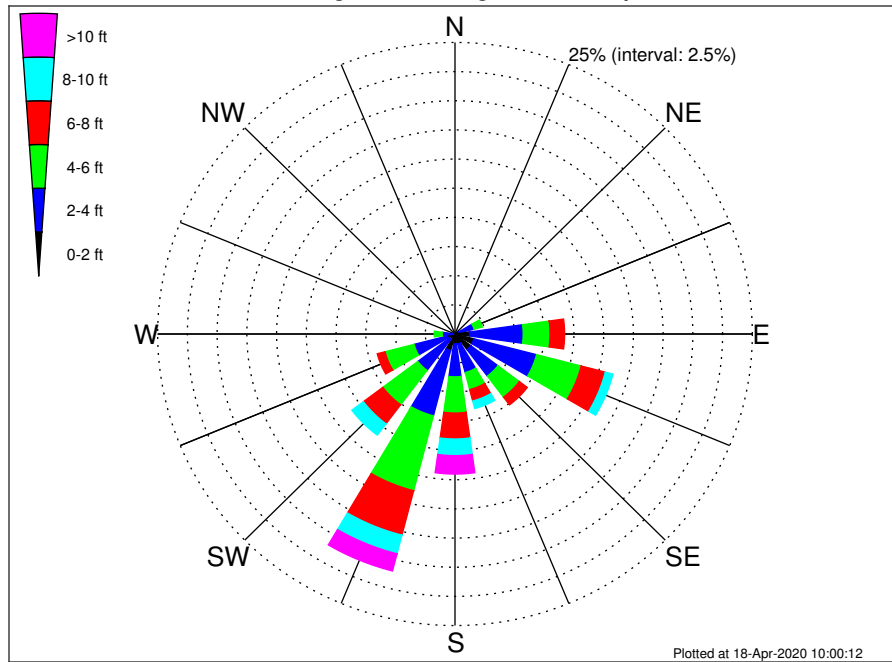
Swell: 71.04%



April Wind Speed PDF: 1979 - 2015



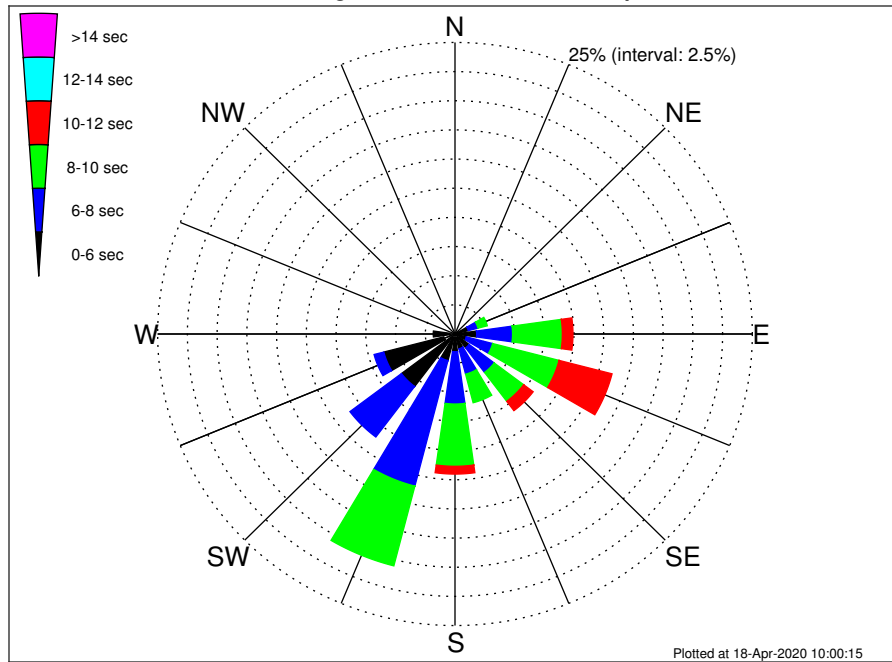
OCS A-0501 North Climatological WaveHeight Rose for April: 1979 - 2015



Joint Frequency Distribution Table

	N	NNE	NE	ENE	E	ESE	SE	SSE	S	SSW	SW	WSW	W	WNW	NW	NNW	Total
calm	•	•	0.01	0.04	•	0.14	0.32	0.20	0.10	0.01	0.01	0.02	0.02	0.01	•	•	0.89
1 - 2 ft	0.10	0.04	0.08	0.34	1.22	1.49	1.34	0.69	0.76	1.46	0.54	0.63	0.11	0.13	0.06	0.11	9.10
2 - 4 ft	0.29	0.25	0.40	1.27	4.51	5.46	2.85	2.52	2.82	5.77	3.37	2.90	0.94	0.44	0.31	0.57	34.67
4 - 6 ft	0.18	0.26	0.24	0.71	2.26	3.88	2.26	1.51	3.10	6.64	3.69	2.52	0.68	0.27	0.26	0.19	28.65
6 - 8 ft	0.04	0.05	0.06	0.34	1.22	2.09	0.83	1.01	2.22	3.94	2.05	0.68	0.10	0.02	0.04	0.05	14.73
8 - 10 ft	0.02	0.05	0.02	0.07	0.52	0.67	0.49	0.67	1.43	1.65	1.21	0.19	0.10	•	•	0.01	7.10
10 - 12 ft	•	0.05	•	0.06	0.18	0.24	0.19	0.15	0.82	0.96	0.40	0.08	0.11	0.01	0.01	0.01	3.28
12 - 14 ft	•	•	•	0.01	•	0.01	0.05	0.08	0.49	0.34	0.02	•	•	•	•	•	1.01
14 - 16 ft	•	•	•	•	•	•	0.01	0.04	0.19	0.17	•	•	•	•	•	•	0.40
16 - 18 ft	•	•	•	•	•	•	0.01	0.01	0.07	0.02	•	•	•	•	•	•	0.12
> 18 ft	•	•	•	•	•	•	•	0.01	0.01	0.02	•	•	•	•	•	•	0.05
Total	0.62	0.69	0.82	2.85	9.92	13.97	8.36	6.90	12.01	20.99	11.29	7.03	2.05	0.89	0.68	0.94	100.00

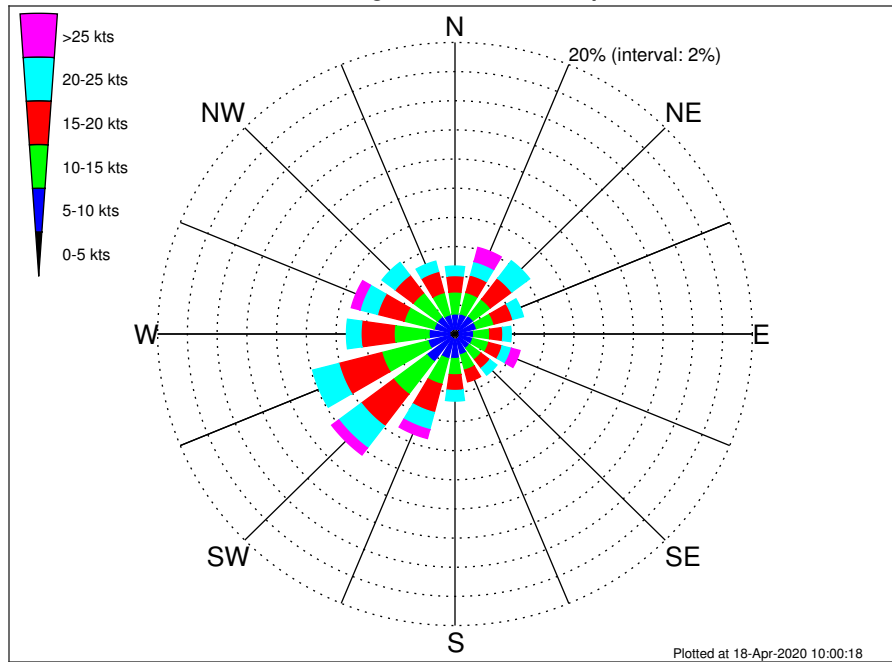
OCS A-0501 North Climatological WavePeriod Rose for April: 1979 - 2015



Joint Frequency Distribution Table

	N	NNE	NE	ENE	E	ESE	SE	SSE	S	SSW	SW	WSW	W	WNW	NW	NNW	Total
calm	•	•	•	•	•	•	•	•	•	•	•	•	•	•	•	•	•
1 - 2 sec	•	•	•	•	•	•	0.01	•	•	•	•	•	•	•	•	•	0.01
2 - 4 sec	0.42	0.30	0.46	0.24	0.21	0.20	0.43	0.39	0.34	0.32	0.39	0.98	0.44	0.39	0.31	0.67	6.49
4 - 6 sec	0.20	0.36	0.36	0.92	1.61	0.78	1.05	0.92	1.18	2.03	5.24	5.21	1.39	0.49	0.36	0.27	22.36
6 - 8 sec	•	0.04	•	0.84	3.02	2.28	2.64	2.25	4.48	11.12	5.42	0.84	0.21	0.01	0.01	•	33.18
8 - 10 sec	•	•	•	0.81	4.19	5.77	3.10	2.53	5.34	7.06	0.23	•	•	•	•	•	29.03
10 - 12 sec	•	•	•	0.05	0.89	4.60	1.00	0.32	0.67	0.45	•	•	•	•	•	•	7.98
12 - 14 sec	•	•	•	•	•	0.33	0.13	0.10	•	•	•	•	•	•	•	•	0.56
14 - 16 sec	•	•	•	•	•	•	•	0.32	•	•	•	•	•	•	•	•	0.32
18 - 20 sec	•	•	•	•	•	•	•	0.07	•	•	•	•	•	•	•	•	0.07
22 - 24 sec	•	•	•	•	•	•	•	•	•	•	•	•	•	•	•	•	•
Total	0.62	0.69	0.82	2.85	9.92	13.97	8.36	6.90	12.01	20.99	11.29	7.03	2.05	0.89	0.68	0.94	100.00

OCS A-0501 North Climatological Wind Rose for April: 1979 - 2015



Joint Frequency Distribution Table

	N	NNE	NE	ENE	E	ESE	SE	SSE	S	SSW	SW	WSW	W	WNW	NW	NNW	Total
calm	0.02	0.02	•	0.02	•	0.04	•	•	0.02	•	0.01	0.01	0.01	•	0.01	0.01	0.19
0 - 5 kts	0.33	0.33	0.44	0.30	0.30	0.29	0.36	0.37	0.38	0.34	0.33	0.36	0.36	0.39	0.36	0.34	5.58
5 - 10 kts	1.02	1.08	1.09	1.18	0.96	0.92	0.86	1.11	1.28	1.40	2.02	1.51	1.38	1.06	1.11	1.01	18.99
10 - 15 kts	1.51	1.51	1.44	1.21	1.08	1.11	0.98	1.08	1.12	1.82	2.81	3.21	2.35	2.08	2.05	1.57	26.92
15 - 20 kts	1.12	1.22	1.81	1.31	0.88	0.94	0.75	0.83	1.07	2.00	2.72	2.98	2.22	1.86	1.53	1.50	24.75
20 - 25 kts	0.65	0.96	1.51	0.74	0.56	0.64	0.59	0.39	0.73	1.21	1.89	1.82	0.98	1.21	1.09	0.73	15.71
25 - 30 kts	0.31	0.59	0.27	0.30	0.15	0.38	0.30	0.34	0.31	0.49	0.57	0.36	0.24	0.38	0.26	0.23	5.48
30 - 35 kts	0.08	0.26	0.11	0.15	0.04	0.17	0.13	0.10	0.06	0.13	0.04	0.04	0.07	0.14	0.05	0.07	1.63
35 - 40 kts	0.05	0.08	0.01	0.04	0.01	0.04	0.06	0.04	0.01	0.01	•	•	0.06	0.08	0.10	0.01	0.59
40 - 45 kts	0.04	0.06	0.01	•	•	0.01	0.01	•	•	•	•	•	•	•	0.01	•	0.14
45 - 50 kts	•	•	•	•	•	•	•	•	•	•	•	•	•	•	•	0.01	0.01
Total	5.14	6.14	6.70	5.24	3.98	4.52	4.03	4.26	4.98	7.41	10.39	10.29	7.67	7.21	6.56	5.48	100.00