

OCS A-0501 North - August

Weather Days

Wave Height > 5.0 ft Mean: 4.7 days Range: 2.3 - 7.0 days p50: 4 days p90: 9 days

Wave Height > 6.0 ft Mean: 2.6 days Range: 0.9 - 4.2 days p50: 3 days p90: 6 days

Wave Height > 7.0 ft Mean: 1.3 days Range: 0.2 - 2.4 days p50: 1 days p90: 4 days

Working Window Probability

Wave Height < 5.0 ft 3 days or longer: 73%

5 days or longer: 40%

7 days or longer: 25%

Wave Height < 6.0 ft 3 days or longer: 72%

5 days or longer: 50%

7 days or longer: 37%

Wave Height < 7.0 ft 3 days or longer: 80%

5 days or longer: 67%

7 days or longer: 56%

Waves

Mean Height: 2 - 4 ft

The wave heights will occasionally reach 10 - 12 ft, but rarely higher.

Mean Period: 6 - 8 sec

The wave periods will occasionally reach 14 - 16 sec, but rarely longer.

Principle Direction, from: SE

WindSea/Swell: 20% / 80%

Winds

Mean Speed: 10 - 15 kts

The winds will occasionally reach 25 - 30 kts, but rarely greater.

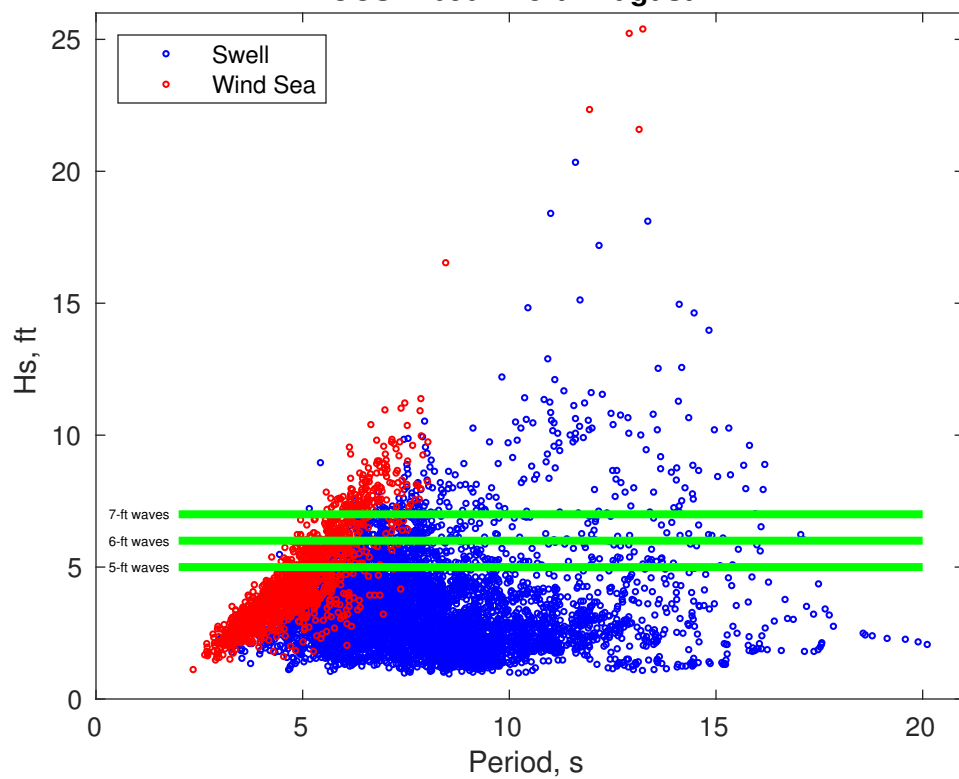
Principle Direction, from: SW

Severe Storms

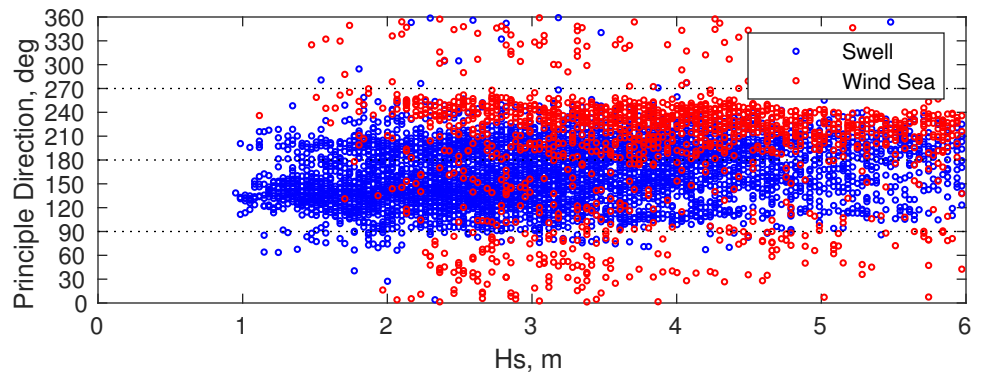
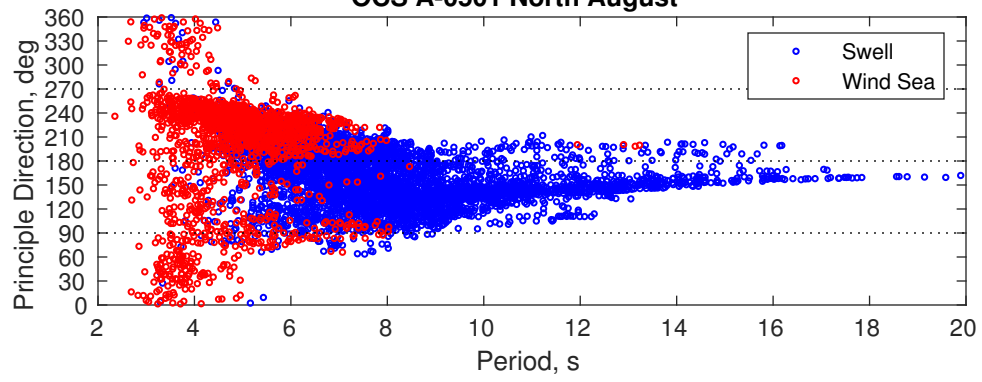
There is a 9 % chance of a storm with winds peaking above 34 kts.

There is a 6 % chance of a storm with waves peaking at 4m (13 ft) or greater.

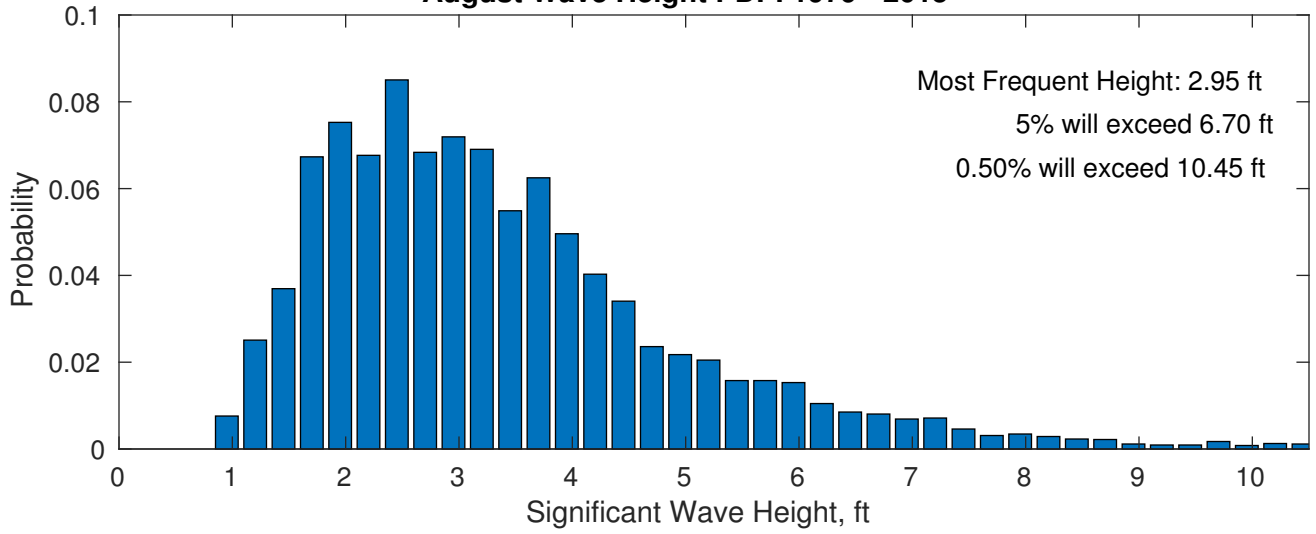
OCS A-0501 North August



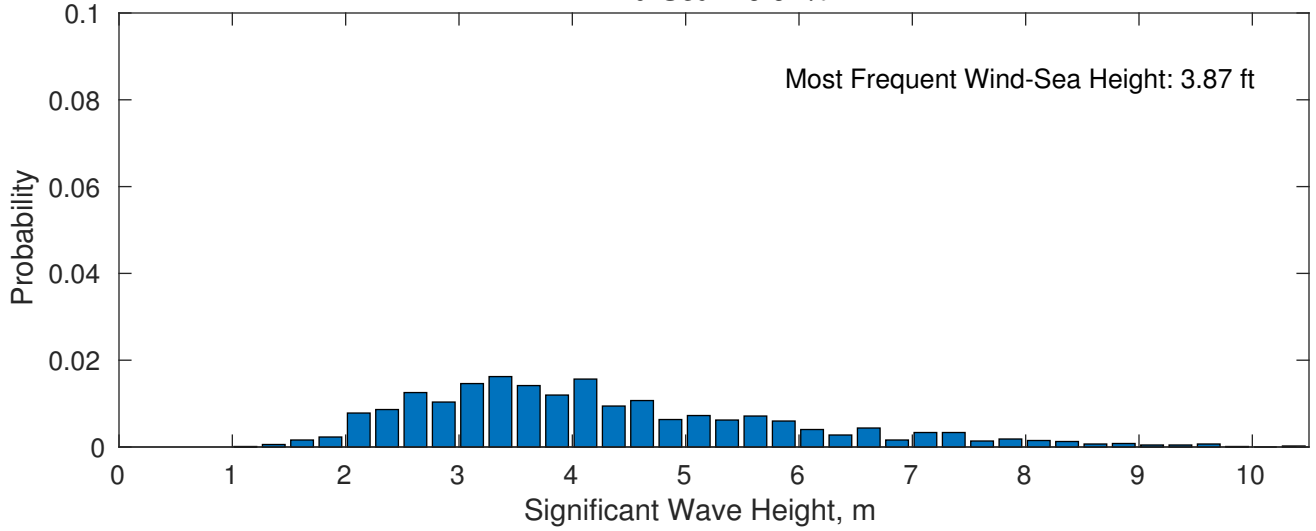
OCS A-0501 North August



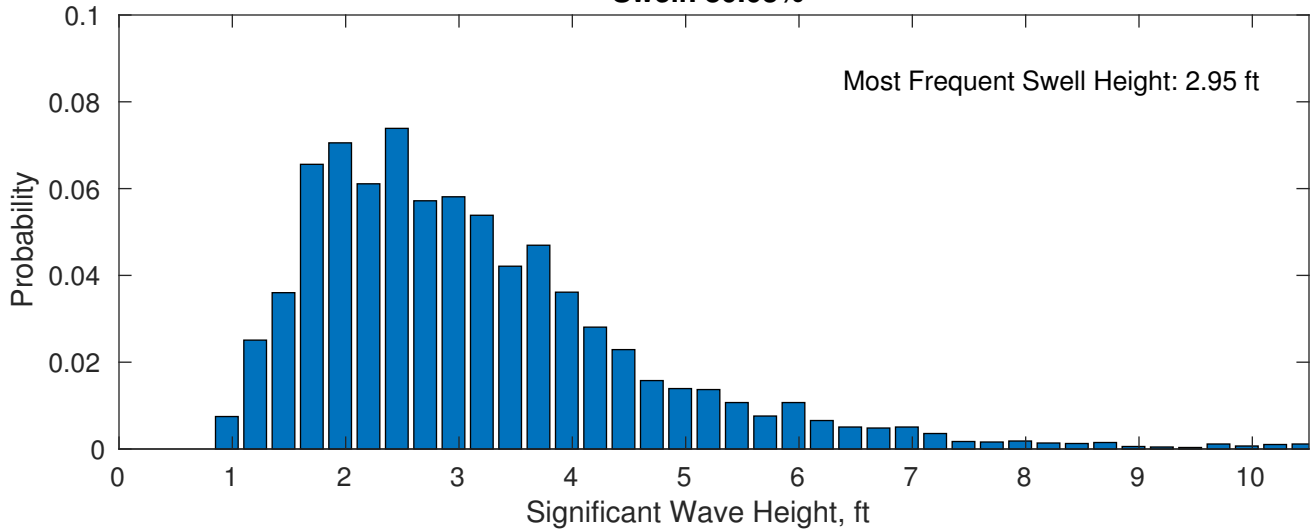
August Wave Height PDF: 1979 - 2015



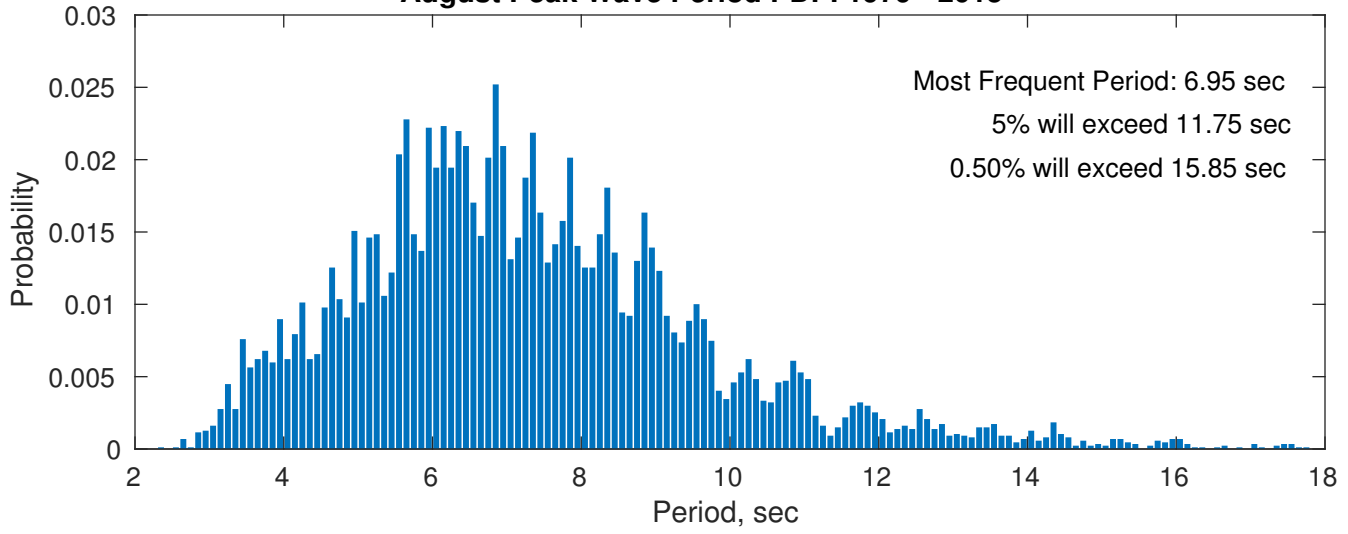
Wind-Sea: 19.97%



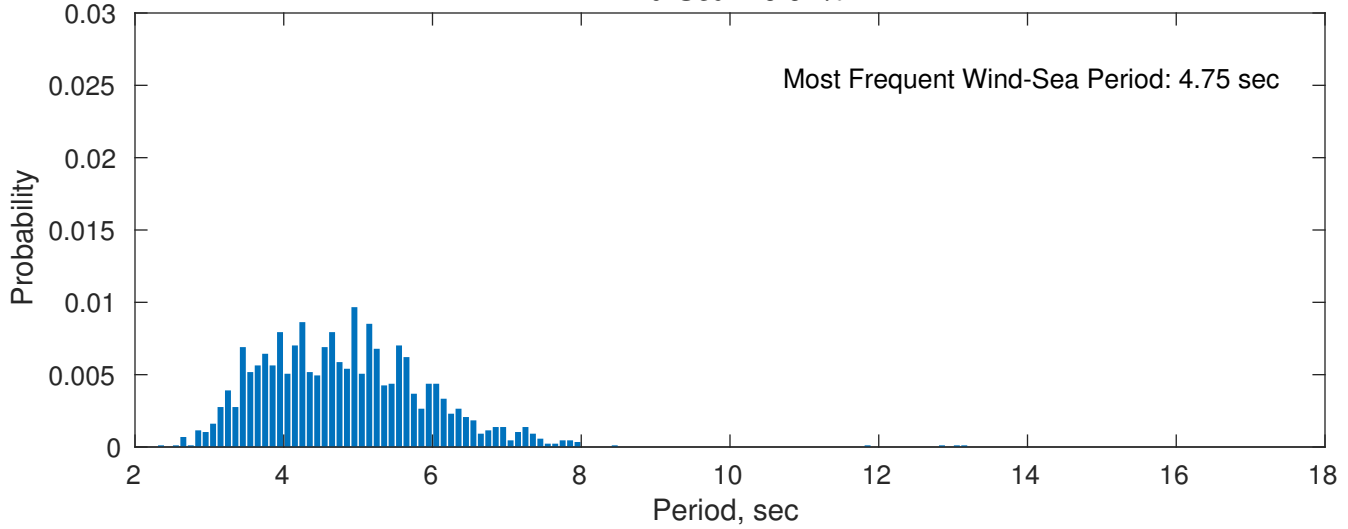
Swell: 80.03%



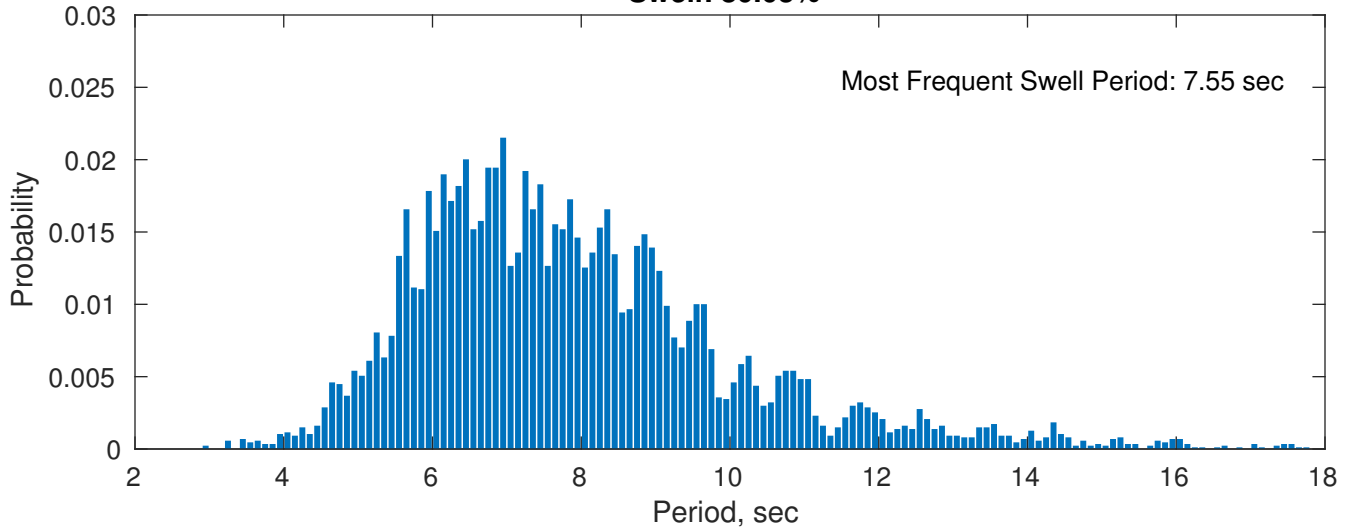
August Peak Wave Period PDF: 1979 - 2015



Wind-Sea: 19.97%

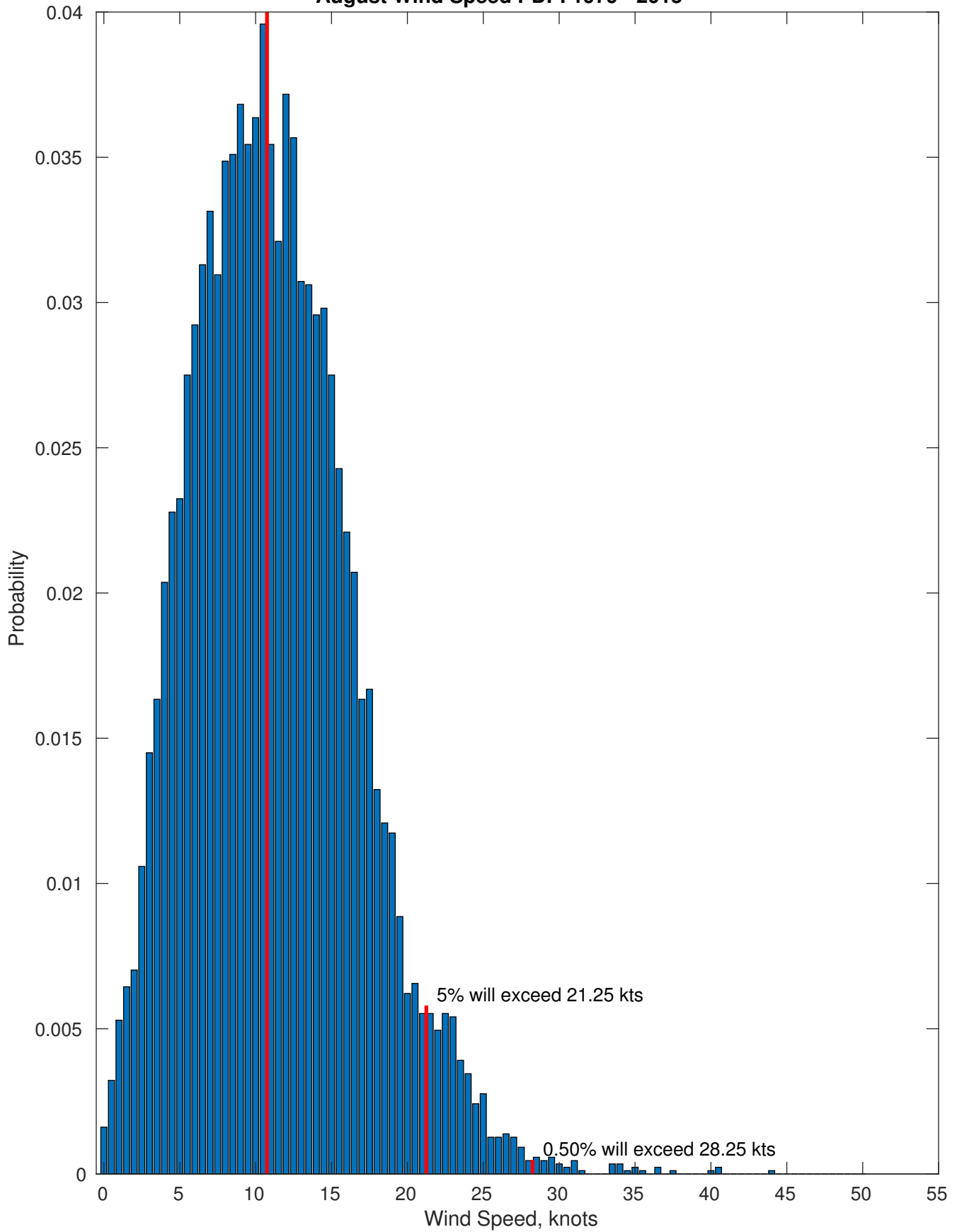


Swell: 80.03%

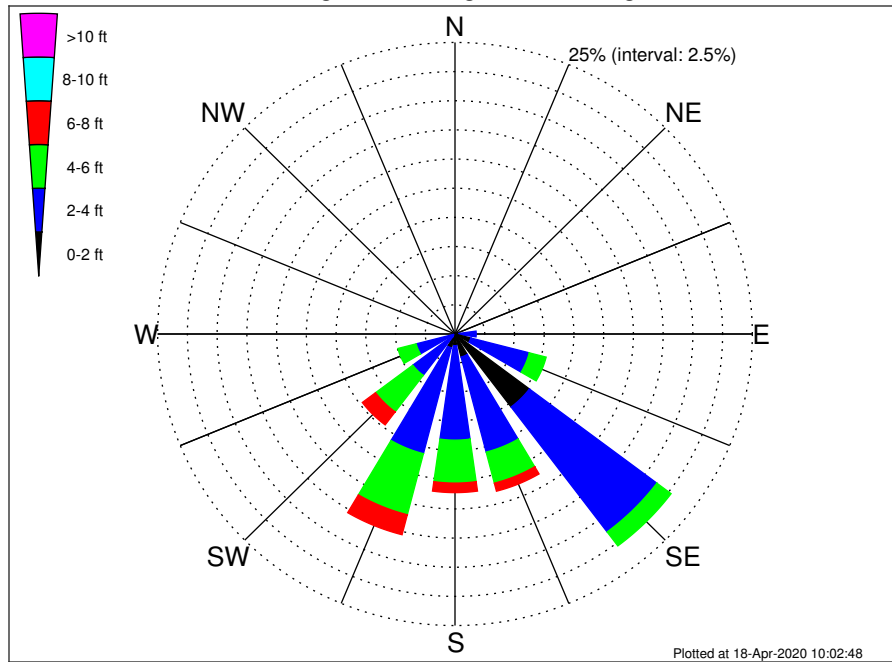


Most Frequent Wind Speed: 10.75 kts

August Wind Speed PDF: 1979 - 2015



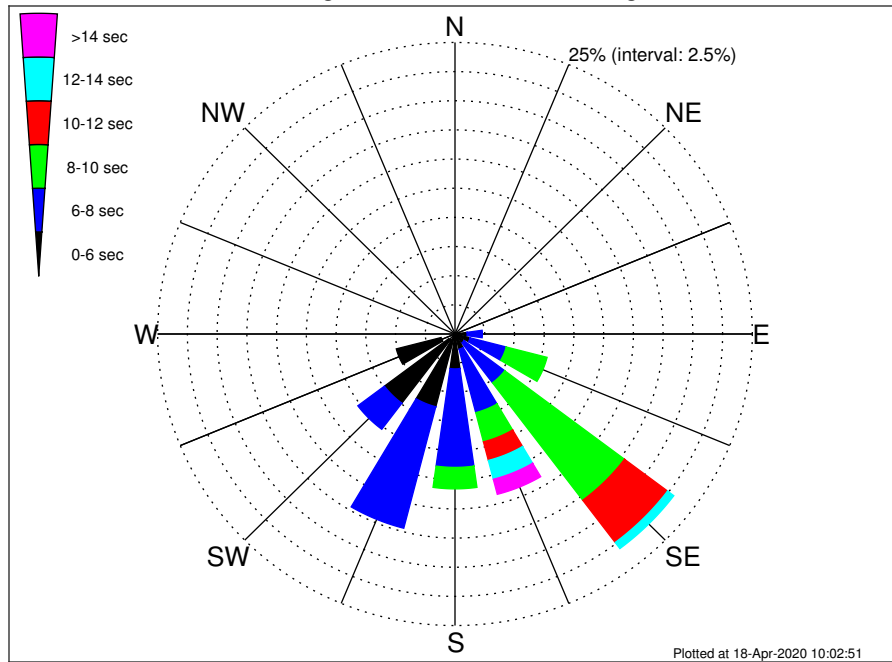
OCS A-0501 North Climatological WaveHeight Rose for August: 1979 - 2015



Joint Frequency Distribution Table

	N	NNE	NE	ENE	E	ESE	SE	SSE	S	SSW	SW	WSW	W	WNW	NW	NNW	Total
calm	•	•	•	•	•	0.01	0.05	•	•	0.01	•	•	•	•	•	•	0.07
1 - 2 ft	0.01	0.01	0.01	0.13	0.36	1.36	7.79	2.04	1.00	1.21	0.28	0.14	0.08	0.02	0.01	0.02	14.46
2 - 4 ft	0.25	0.30	0.44	0.44	1.43	5.09	13.42	8.42	8.10	9.38	4.17	3.23	0.17	0.07	0.21	0.23	55.34
4 - 6 ft	0.06	0.03	0.15	0.24	0.53	1.46	1.50	2.75	3.68	5.41	3.92	1.59	0.13	0.03	0.03	0.07	21.59
6 - 8 ft	0.02	0.02	•	0.02	0.39	0.52	0.26	0.71	0.82	1.77	1.39	0.31	0.05	0.01	•	•	6.31
8 - 10 ft	0.01	•	•	•	0.15	0.09	0.01	0.10	0.29	0.37	0.46	0.01	•	•	•	•	1.50
10 - 12 ft	•	•	•	•	•	•	0.01	0.14	0.17	0.16	0.03	•	•	•	•	•	0.52
12 - 14 ft	•	•	•	•	•	•	•	0.02	•	0.05	•	•	•	•	•	•	0.07
14 - 16 ft	•	•	•	•	•	•	•	0.01	•	0.03	•	•	•	•	•	•	0.05
16 - 18 ft	•	•	•	•	•	•	•	•	0.01	0.01	•	•	•	•	•	•	0.02
> 18 ft	•	•	•	•	•	•	•	•	•	0.08	•	•	•	•	•	•	0.08
Total	0.36	0.37	0.60	0.83	2.85	8.53	23.04	14.20	14.07	18.48	10.25	5.28	0.43	0.14	0.25	0.32	100.00

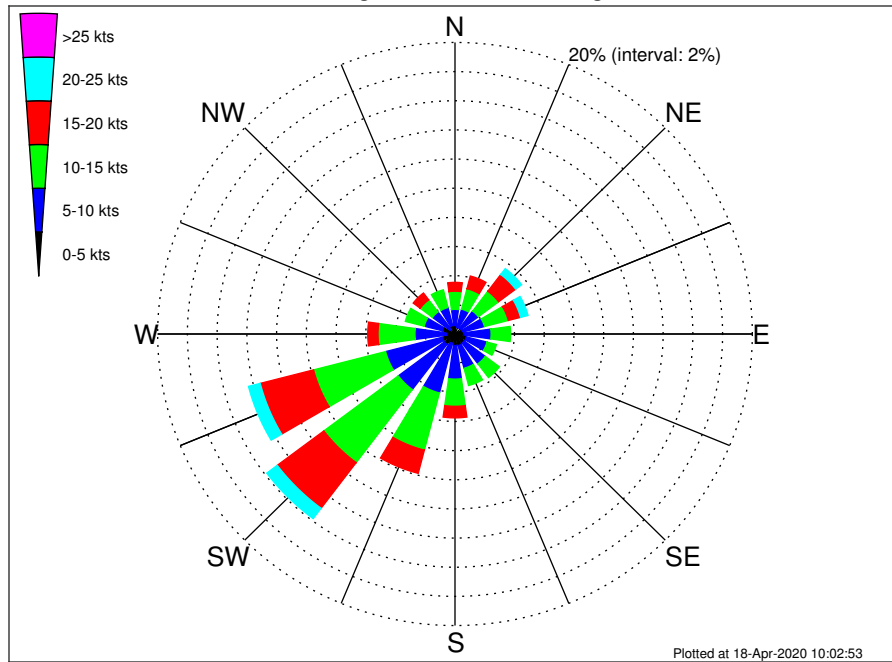
OCS A-0501 North Climatological WavePeriod Rose for August: 1979 - 2015



Joint Frequency Distribution Table

	N	NNE	NE	ENE	E	ESE	SE	SSE	S	SSW	SW	WSW	W	WNW	NW	NNW	Total
calm	•	•	•	•	•	•	•	•	•	•	•	•	•	•	•	•	•
1 - 2 sec	•	•	•	•	•	•	•	•	•	•	•	•	•	•	•	•	•
2 - 4 sec	0.25	0.32	0.43	0.28	0.17	0.22	0.24	0.24	0.17	0.24	0.64	1.21	0.18	0.08	0.21	0.26	5.16
4 - 6 sec	0.10	0.05	0.17	0.31	0.85	1.09	0.71	1.10	2.82	6.20	6.79	3.89	0.22	0.06	0.05	0.06	24.48
6 - 8 sec	•	•	•	0.23	1.28	3.14	4.28	5.62	8.45	10.76	2.80	0.18	0.02	•	•	•	36.75
8 - 10 sec	•	•	•	0.01	0.54	3.54	12.61	2.59	1.84	0.62	0.02	•	•	•	•	•	21.78
10 - 12 sec	•	•	•	•	0.01	0.49	4.53	1.65	0.41	0.36	•	•	•	•	•	•	7.46
12 - 14 sec	•	•	•	•	•	0.03	0.66	1.67	0.20	0.15	•	•	•	•	•	•	2.70
14 - 16 sec	•	•	•	•	•	•	•	0.96	0.16	0.13	•	•	•	•	•	•	1.24
18 - 20 sec	•	•	•	•	•	•	•	0.30	0.02	0.02	•	•	•	•	•	•	0.35
22 - 24 sec	•	•	•	•	•	•	•	0.08	•	•	•	•	•	•	•	•	0.08
Total	0.36	0.37	0.60	0.83	2.85	8.53	23.04	14.20	14.07	18.48	10.25	5.28	0.43	0.14	0.25	0.32	100.00

OCS A-0501 North Climatological Wind Rose for August: 1979 - 2015



Joint Frequency Distribution Table

	N	NNE	NE	ENE	E	ESE	SE	SSE	S	SSW	SW	WSW	W	WNW	NW	NNW	Total
calm	0.05	0.01	0.02	0.01	0.07	0.02	0.05	0.01	0.02	0.03	0.03	0.03	0.02	0.02	0.01	0.06	0.48
0 - 5 kts	0.54	0.46	0.47	0.52	0.54	0.77	0.74	0.81	0.77	0.63	0.86	0.86	0.54	0.86	0.41	0.54	10.33
5 - 10 kts	1.10	1.29	1.47	1.52	1.82	1.43	1.77	1.61	2.30	3.51	3.88	3.92	2.13	1.25	1.47	1.28	31.76
10 - 15 kts	1.24	1.45	1.70	1.66	1.31	0.66	1.19	1.22	1.86	4.05	6.27	5.01	2.49	1.31	1.04	1.25	33.71
15 - 20 kts	0.61	0.90	1.44	0.85	0.40	0.29	0.31	0.32	0.79	1.65	3.92	3.71	0.69	0.43	0.59	0.46	17.35
20 - 25 kts	0.12	0.46	0.51	0.52	0.15	0.16	0.10	0.17	0.20	0.48	0.89	0.82	0.07	0.05	0.08	0.18	4.95
25 - 30 kts	0.03	0.13	0.26	0.09	0.09	0.03	0.08	0.03	0.01	0.01	0.13	0.06	0.01	0.07	0.03	0.01	1.09
30 - 35 kts	0.03	0.01	0.05	0.02	.	.	0.05	.	0.01	.	0.01	.	0.01	.	.	.	0.20
35 - 40 kts	.	.	0.02	.	.	0.02	.	.	0.01	.	.	.	0.01	.	.	.	0.07
40 - 45 kts	.	0.01	0.01	0.01	0.01	0.05
45 - 50 kts	0.01	0.01
Total	3.73	4.72	5.95	5.19	4.38	3.38	4.28	4.19	6.00	10.38	16.00	14.42	5.97	3.99	3.64	3.79	100.00