

## OCS A-0501 North - June

### Weather Days

Wave Height > 5.0 ft Mean: 6.2 days Range: 3.3 - 9.1 days p50: 6 days p90: 13 days

Wave Height > 6.0 ft Mean: 3.1 days Range: 1.0 - 5.2 days p50: 3 days p90: 9 days

Wave Height > 7.0 ft Mean: 1.5 days Range: 0.2 - 2.8 days p50: 2 days p90: 5 days

### Working Window Probability

Wave Height < 5.0 ft 3 days or longer: 58%

5 days or longer: 23%

7 days or longer: 12%

Wave Height < 6.0 ft 3 days or longer: 71%

5 days or longer: 44%

7 days or longer: 32%

Wave Height < 7.0 ft 3 days or longer: 76%

5 days or longer: 50%

7 days or longer: 43%

### Waves

Mean Height: 2 - 4 ft

The wave heights will occasionally reach 8 - 10 ft, but rarely higher.

Mean Period: 6 - 8 sec

The wave periods will occasionally reach 14 - 16 sec, but rarely longer.

Principle Direction, from: SSW

WindSea/Swell: 25% / 75%

### Winds

Mean Speed: 10 - 15 kts

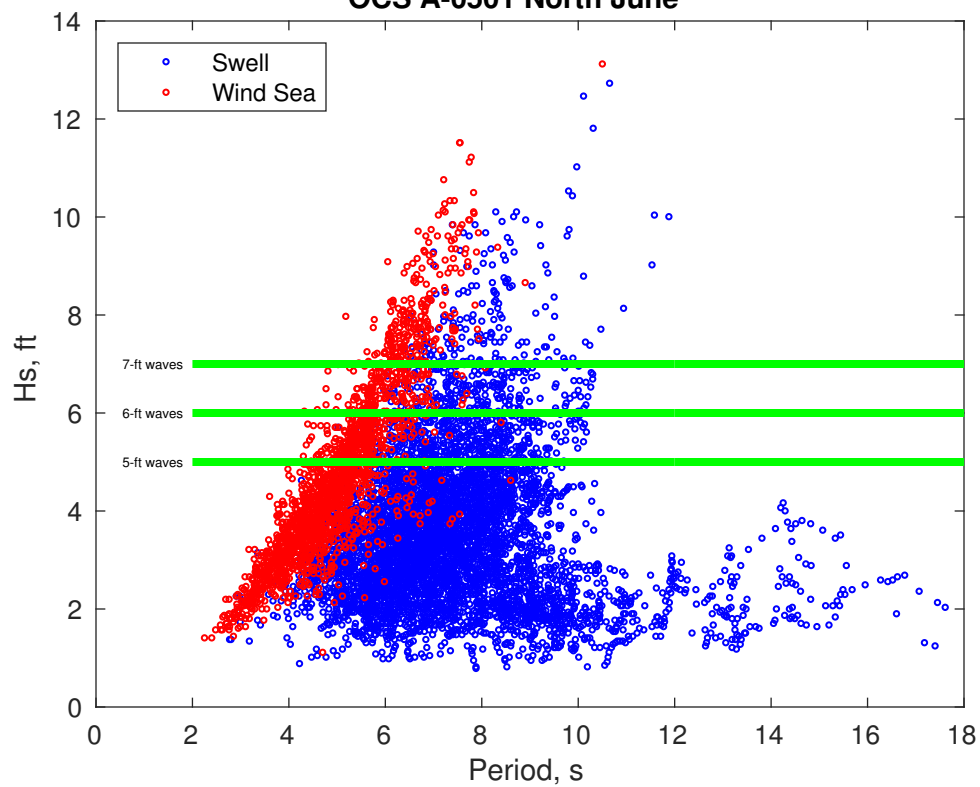
The winds will occasionally reach 25 - 30 kts, but rarely greater.

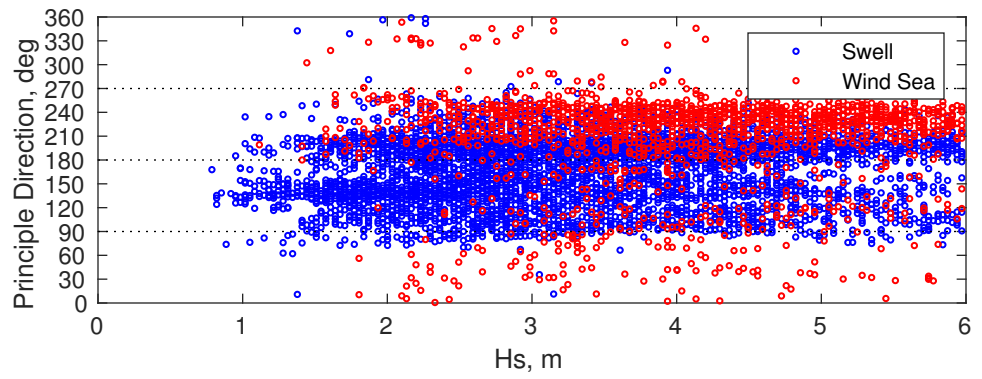
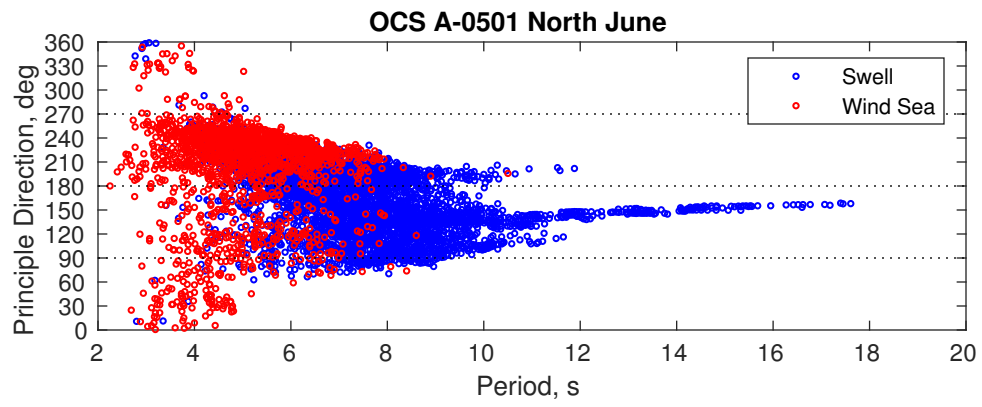
Principle Direction, from: SW

### Severe Storms

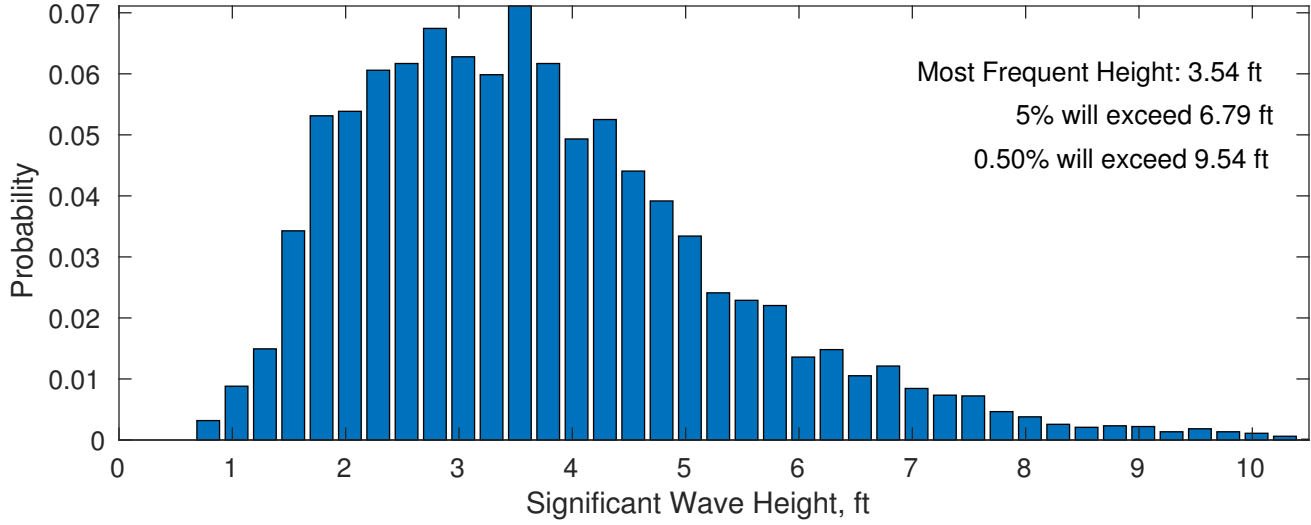
Severe storms with gale force winds and extreme waves are not expected.

### OCS A-0501 North June

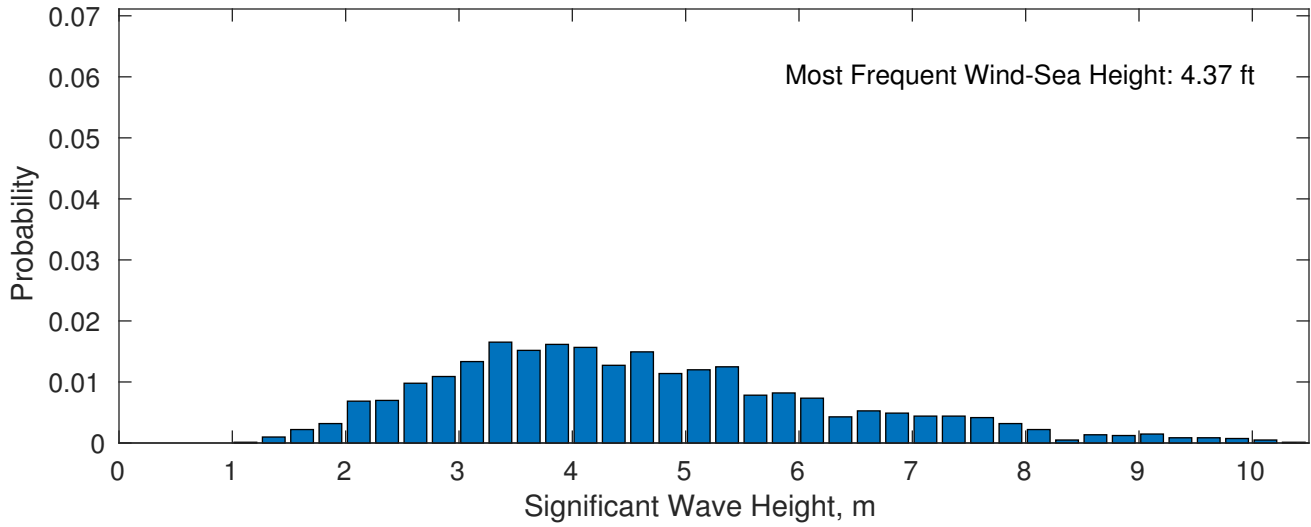




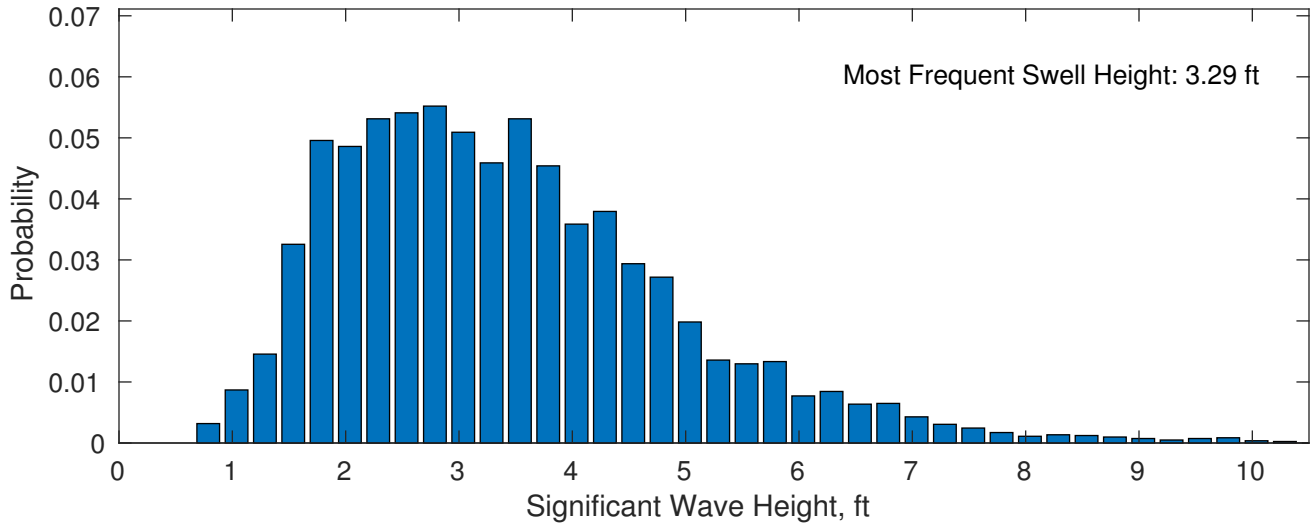
**June Wave Height PDF: 1979 - 2015**



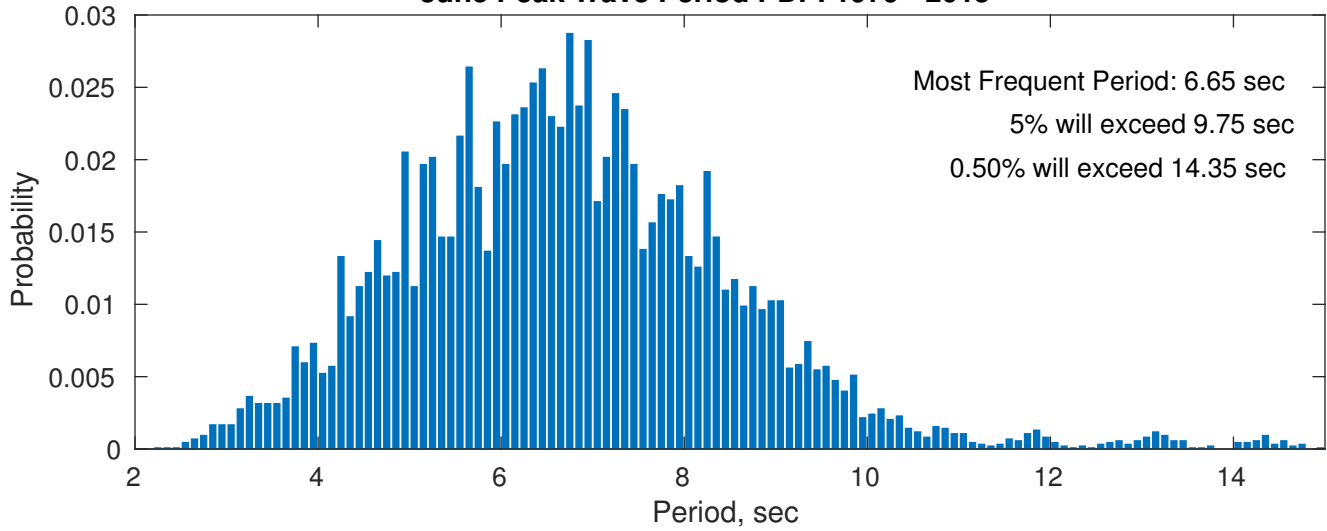
**Wind-Sea: 24.59%**



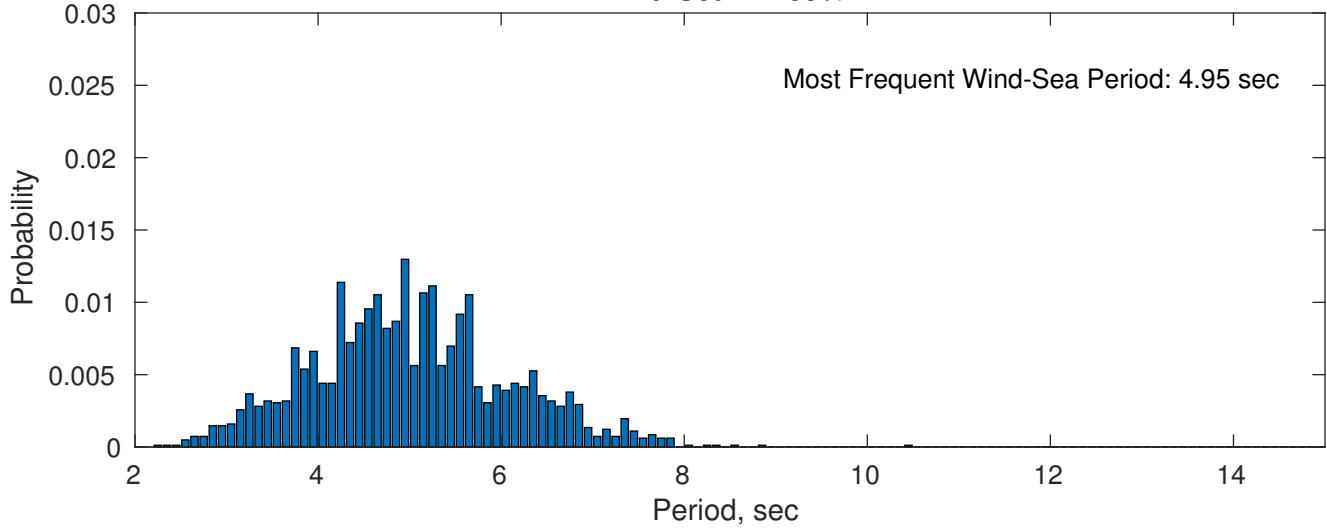
**Swell: 75.41%**



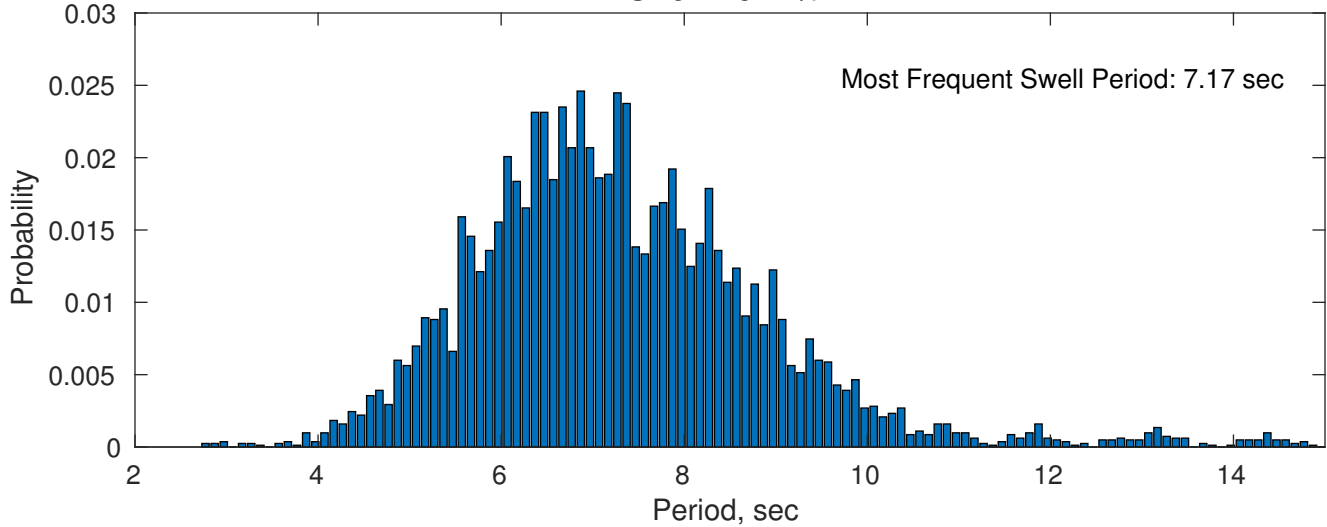
**June Peak Wave Period PDF: 1979 - 2015**



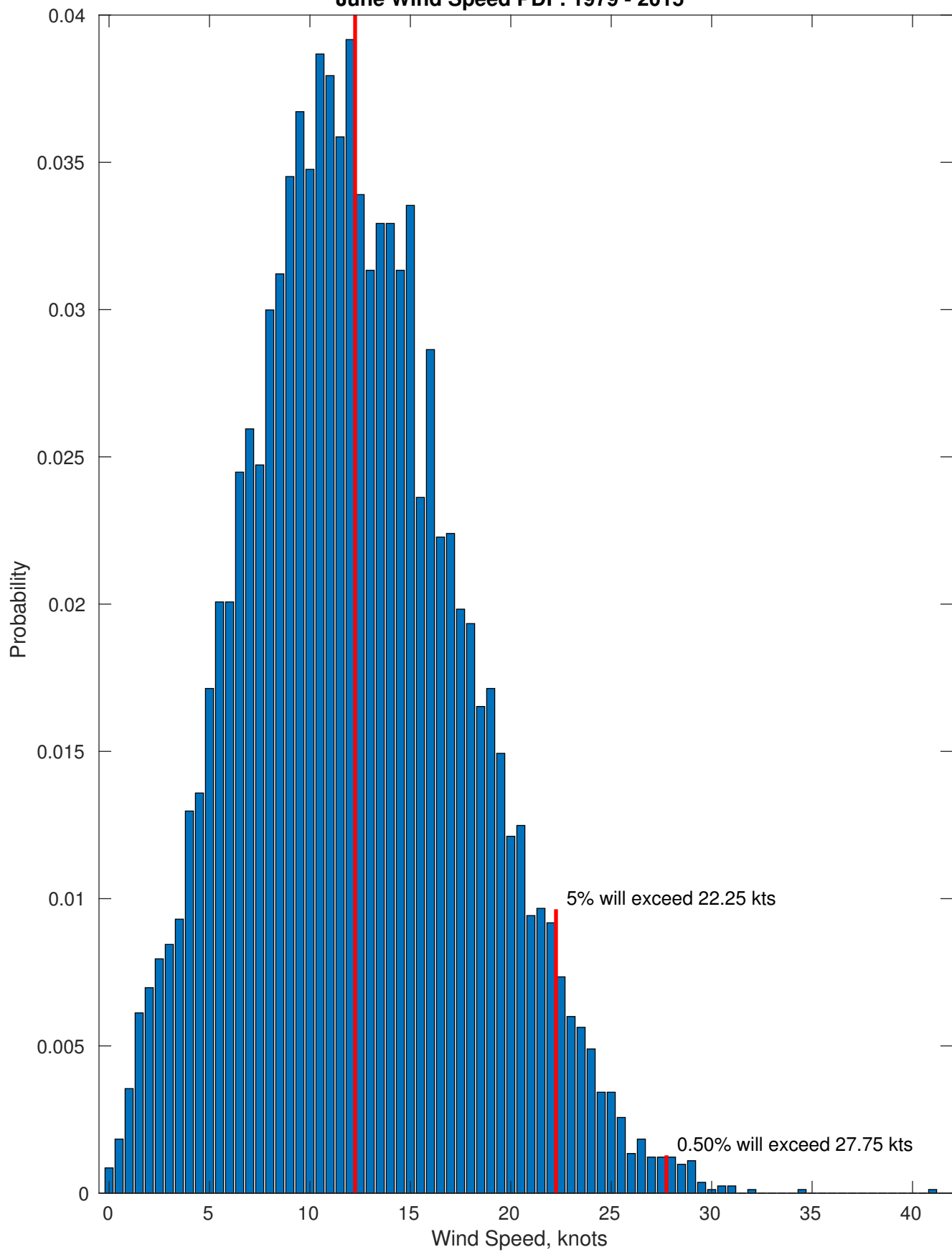
**Wind-Sea: 24.59%**



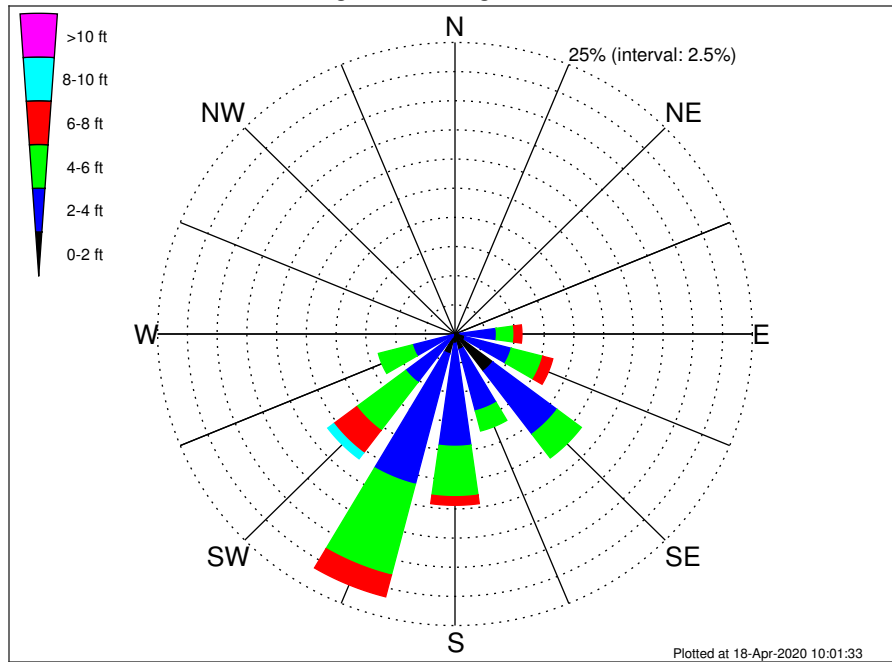
**Swell: 75.41%**



Most Frequent Wind Speed: 12.25 kts  
**June Wind Speed PDF: 1979 - 2015**



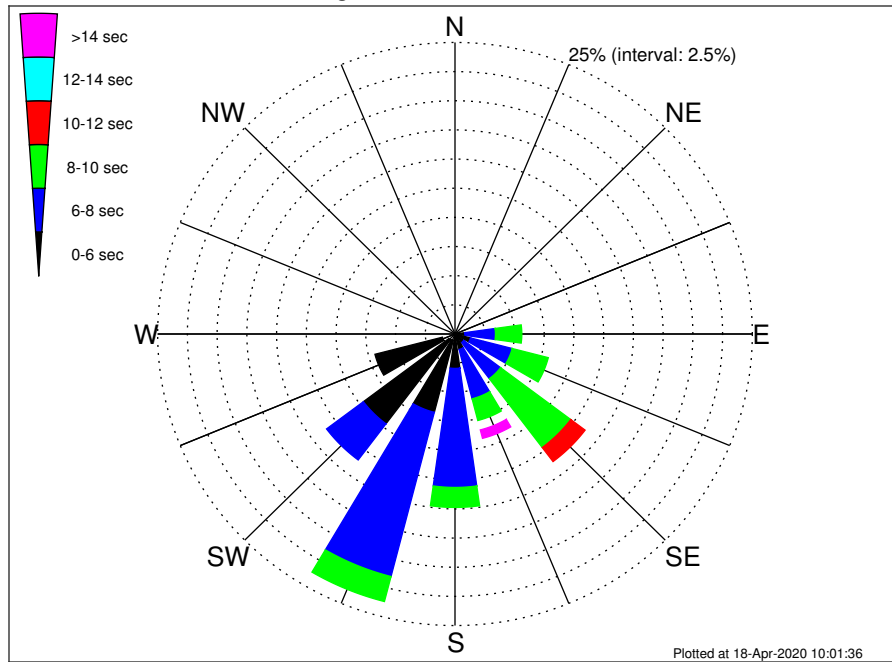
OCS A-0501 North Climatological WaveHeight Rose for June: 1979 - 2015



Joint Frequency Distribution Table

	N	NNE	NE	ENE	E	ESE	SE	SSE	S	SSW	SW	WSW	W	WNW	NW	NNW	Total
calm	•	•	•	0.01	•	•	0.12	0.02	0.04	•	•	•	•	•	•	•	0.20
1 - 2 ft	0.04	•	0.01	0.11	0.44	0.88	3.86	1.35	0.77	1.75	0.31	0.16	0.07	0.01	0.01	0.04	9.80
2 - 4 ft	0.13	0.21	0.20	0.39	3.05	4.01	6.78	5.45	8.82	11.57	4.88	3.54	0.40	0.09	0.04	0.17	49.73
4 - 6 ft	0.05	0.12	0.21	0.18	1.48	2.73	2.55	1.77	4.32	8.04	5.17	2.96	0.18	0.04	0.01	0.02	29.84
6 - 8 ft	•	0.05	0.02	0.10	0.66	0.87	0.60	0.42	0.73	1.92	2.41	0.53	•	•	0.01	•	8.32
8 - 10 ft	•	•	•	0.01	0.01	0.11	0.11	0.22	0.21	0.45	0.64	0.02	•	•	•	•	1.79
10 - 12 ft	•	•	•	•	•	0.04	0.01	0.01	0.02	0.06	0.13	•	•	•	•	•	0.28
12 - 14 ft	•	•	•	•	•	•	•	•	0.01	0.02	•	•	•	•	•	•	0.04
14 - 16 ft	•	•	•	•	•	•	•	•	•	•	•	•	•	•	•	•	•
16 - 18 ft	•	•	•	•	•	•	•	•	•	•	•	•	•	•	•	•	•
> 18 ft	•	•	•	•	•	•	•	•	•	•	•	•	•	•	•	•	•
Total	0.22	0.38	0.44	0.81	5.64	8.64	14.03	9.24	14.93	23.82	13.54	7.21	0.66	0.13	0.07	0.23	100.00

OCS A-0501 North Climatological WavePeriod Rose for June: 1979 - 2015

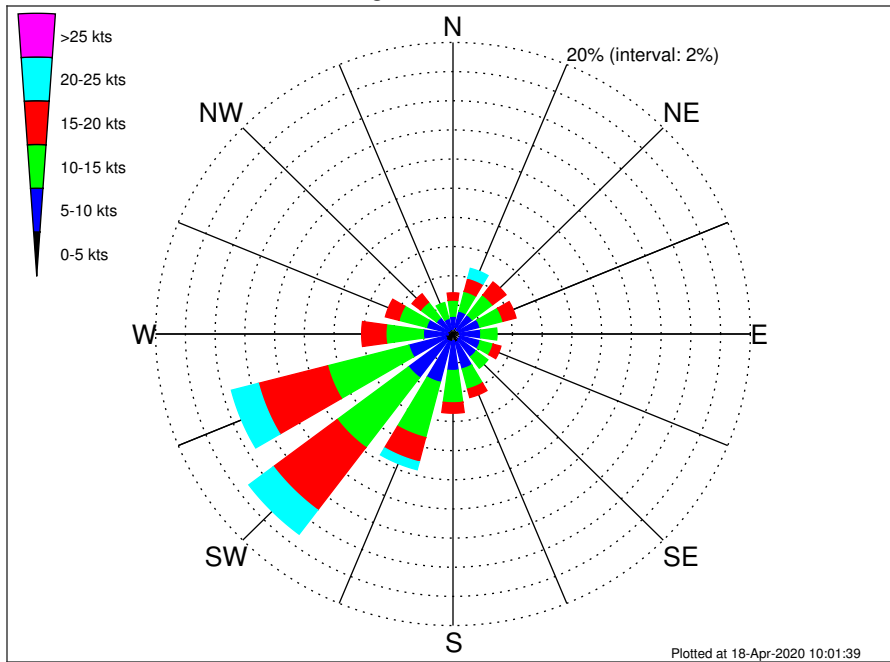


Joint Frequency Distribution Table

	N	NNE	NE	ENE	E	ESE	SE	SSE	S	SSW	SW	WSW	W	WNW	NW	NNW	Total
calm	•	•	•	•	•	•	•	•	•	•	•	•	•	•	•	•	•
1 - 2 sec	•	•	•	•	•	•	•	•	•	•	•	•	•	•	•	•	•
2 - 4 sec	0.21	0.22	0.23	0.15	0.12	0.16	0.09	0.16	0.23	0.56	0.64	1.09	0.20	0.09	0.06	0.23	4.43
4 - 6 sec	0.01	0.16	0.21	0.37	0.71	1.19	0.83	1.21	2.72	6.38	9.01	5.86	0.47	0.05	0.01	•	29.18
6 - 8 sec	•	•	•	0.27	2.57	3.62	3.88	4.37	10.21	14.54	3.88	0.26	•	•	•	•	43.60
8 - 10 sec	•	•	•	0.02	2.22	3.13	7.39	1.92	1.71	2.22	0.01	•	•	•	•	•	18.63
10 - 12 sec	•	•	•	•	0.02	0.54	1.51	0.29	0.06	0.12	•	•	•	•	•	•	2.55
12 - 14 sec	•	•	•	•	•	•	0.33	0.54	•	•	•	•	•	•	•	•	0.87
14 - 16 sec	•	•	•	•	•	•	•	0.61	•	•	•	•	•	•	•	•	0.61
18 - 20 sec	•	•	•	•	•	•	•	0.13	•	•	•	•	•	•	•	•	0.13
22 - 24 sec	•	•	•	•	•	•	•	•	•	•	•	•	•	•	•	•	•
Total	0.22	0.38	0.44	0.81	5.64	8.64	14.03	9.24	14.93	23.82	13.54	7.21	0.66	0.13	0.07	0.23	100.00



OCS A-0501 North Climatological Wind Rose for June: 1979 - 2015



Joint Frequency Distribution Table

	N	NNE	NE	ENE	E	ESE	SE	SSE	S	SSW	SW	WSW	W	WNW	NW	NNW	Total
calm	•	0.01	•	•	0.04	0.02	0.01	0.01	0.05	0.02	0.01	0.01	0.01	0.04	0.01	0.01	0.27
0 - 5 kts	0.34	0.49	0.35	0.43	0.42	0.49	0.48	0.58	0.42	0.51	0.56	0.50	0.33	0.38	0.29	0.32	6.89
5 - 10 kts	0.88	1.13	1.27	1.44	1.42	1.38	1.47	1.88	2.04	2.89	3.17	2.56	1.65	1.43	1.09	0.77	26.49
10 - 15 kts	1.10	1.40	1.71	1.60	1.09	0.89	0.98	1.43	2.22	3.92	6.01	5.64	2.52	1.91	1.33	1.13	34.88
15 - 20 kts	0.50	0.94	1.13	0.91	0.47	0.54	0.43	0.60	0.71	1.73	5.37	4.81	1.63	0.94	0.72	0.40	21.82
20 - 25 kts	0.11	0.69	0.44	0.23	0.20	0.22	0.23	0.22	0.28	0.55	2.07	1.87	0.31	0.26	0.17	0.17	8.02
25 - 30 kts	0.11	0.27	0.21	0.09	0.11	0.06	0.06	0.06	0.04	0.06	0.21	0.15	0.02	0.02	0.02	0.04	1.53
30 - 35 kts	0.01	0.01	0.01	•	0.01	0.01	•	•	•	0.01	•	0.01	•	•	•	•	0.09
35 - 40 kts	•	•	•	•	•	•	•	•	•	•	•	•	•	•	•	•	•
40 - 45 kts	•	•	0.01	•	•	•	•	•	•	•	•	•	•	•	•	•	0.01
45 - 50 kts	•	•	•	•	•	•	•	•	•	•	•	•	•	•	•	•	•
Total	3.06	4.93	5.14	4.70	3.75	3.62	3.66	4.79	5.75	9.69	17.41	15.56	6.47	4.98	3.65	2.84	100.00