

## OCS A-0501 North - May

### Weather Days

Wave Height > 5.0 ft Mean: 8.1 days Range: 5.1 - 11.1 days p50: 8 days p90: 15 days

Wave Height > 6.0 ft Mean: 4.7 days Range: 2.5 - 7.0 days p50: 5 days p90: 10 days

Wave Height > 7.0 ft Mean: 2.7 days Range: 1.0 - 4.3 days p50: 3 days p90: 7 days

### Working Window Probability

Wave Height < 5.0 ft 3 days or longer: 58%

5 days or longer: 20%

7 days or longer: 9%

Wave Height < 6.0 ft 3 days or longer: 65%

5 days or longer: 34%

7 days or longer: 22%

Wave Height < 7.0 ft 3 days or longer: 80%

5 days or longer: 53%

7 days or longer: 38%

### Waves

Mean Height: 2 - 4 ft

The wave heights will occasionally reach 10 - 12 ft, but rarely higher.

Mean Period: 6 - 8 sec

The wave periods will occasionally reach 10 - 12 sec, but rarely longer.

Principle Direction, from: SSW

WindSea/Swell: 25% / 75%

### Winds

Mean Speed: 10 - 15 kts

The winds will occasionally reach 30 - 35 kts, but rarely greater.

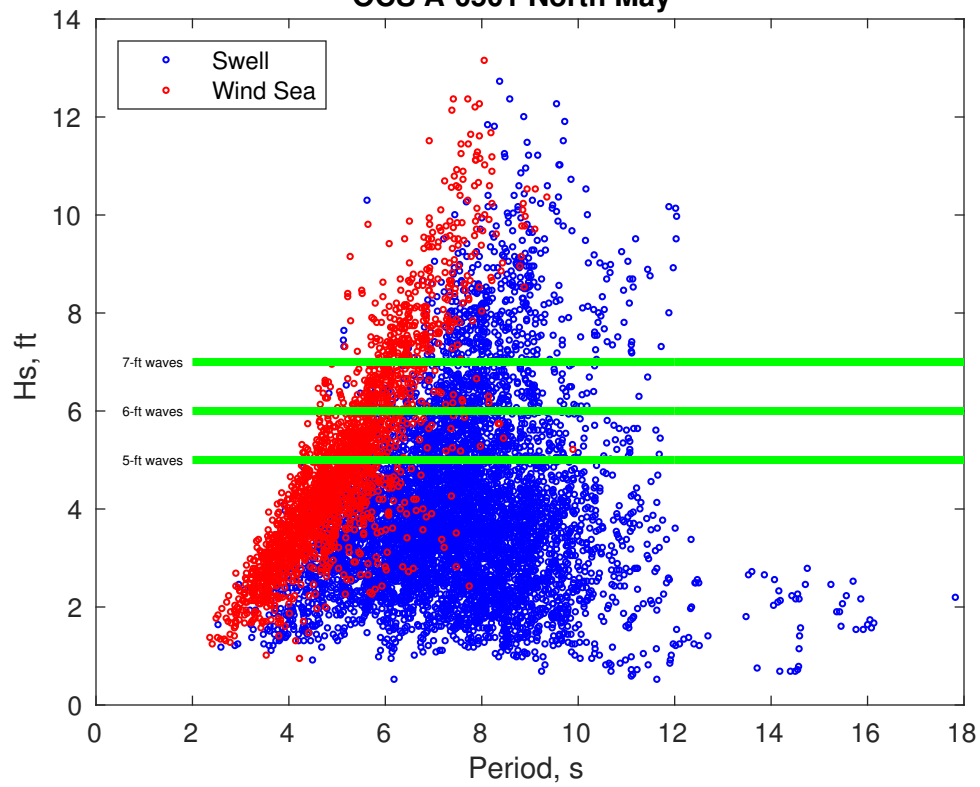
Principle Direction, from: WSW

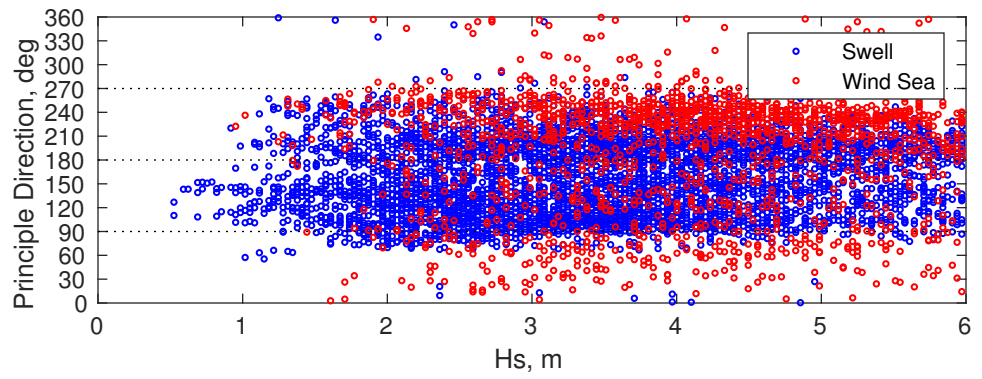
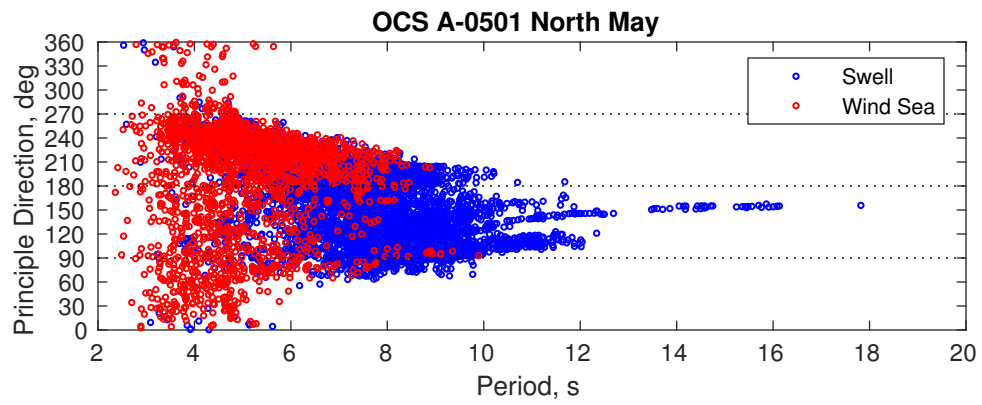
### Severe Storms

There is a 6 % chance of a storm with winds peaking above 34 kts.

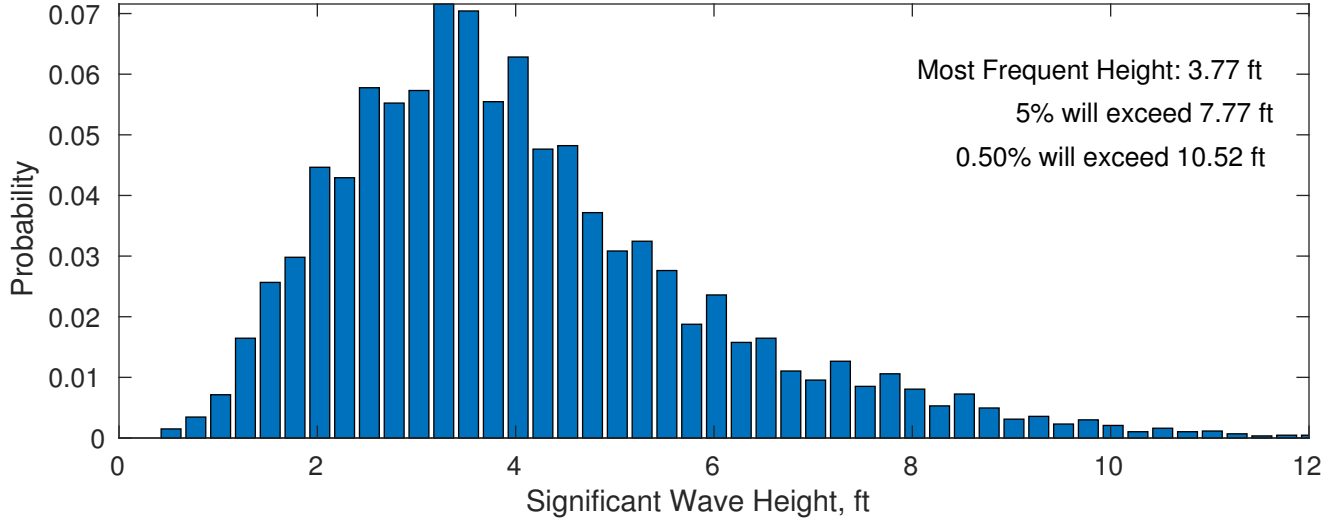
There is little chance of a storm with waves peaking at 4m (13 ft) or greater.

### OCS A-0501 North May

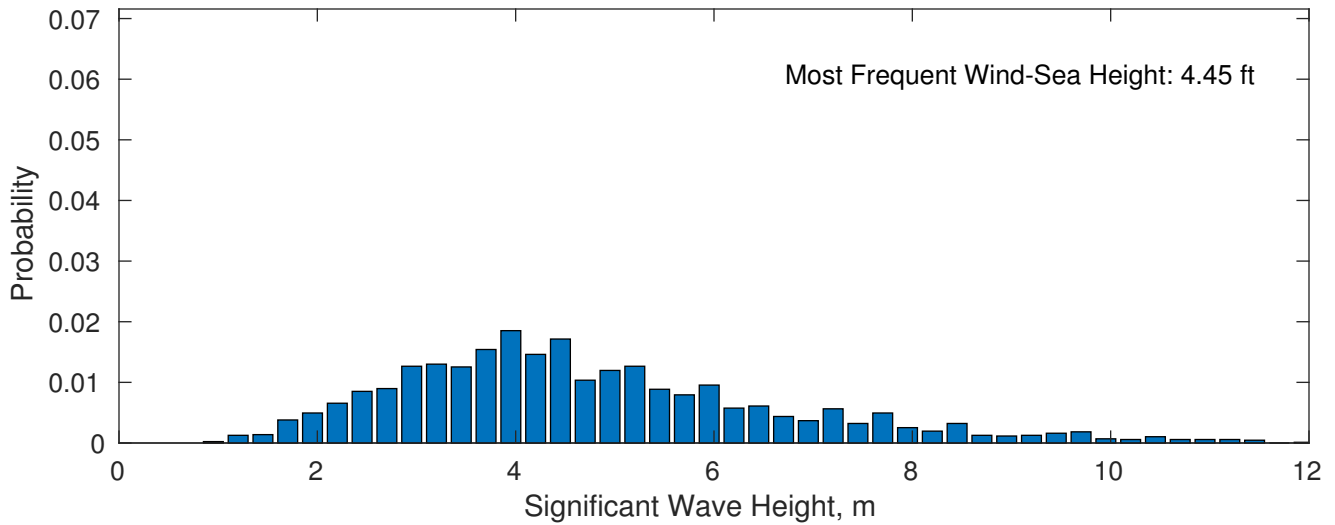




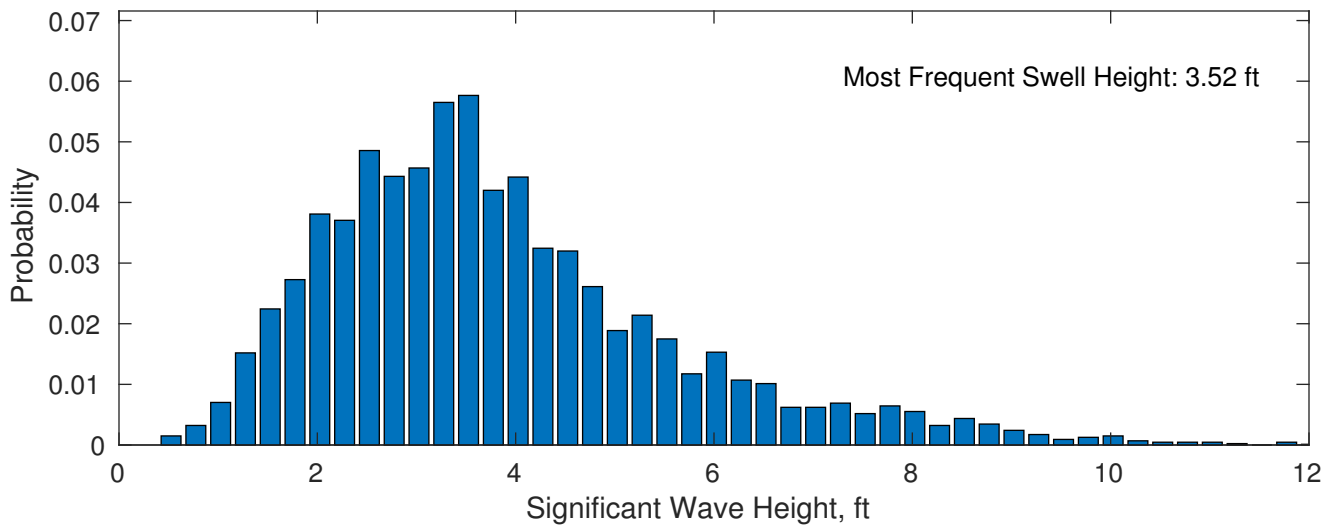
**May Wave Height PDF: 1979 - 2015**



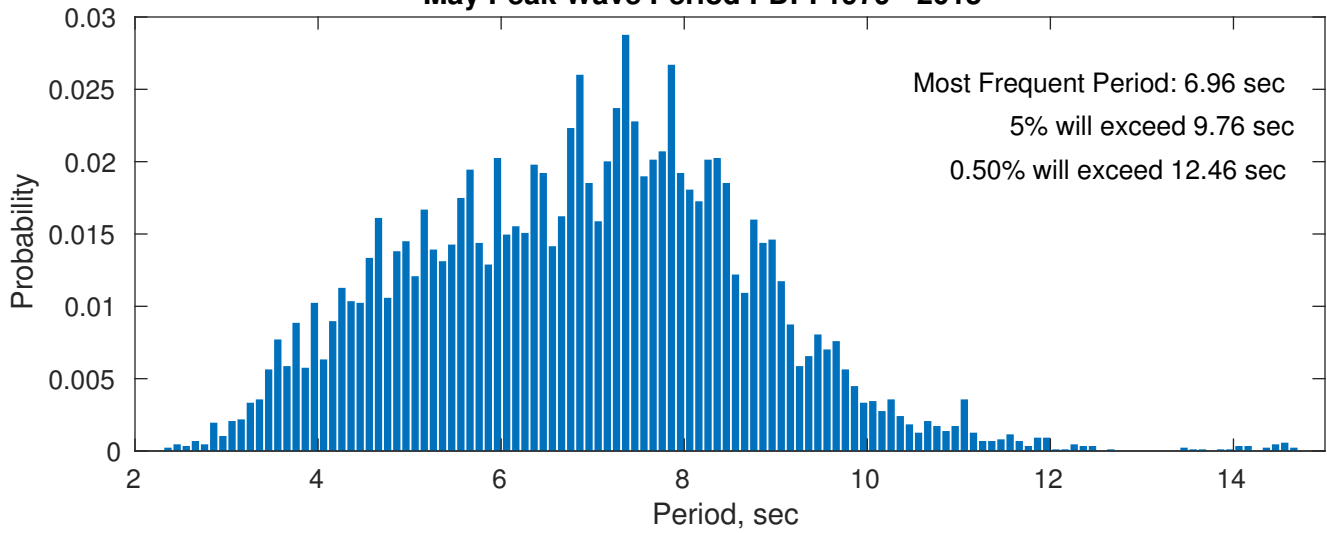
**Wind-Sea: 25.47%**



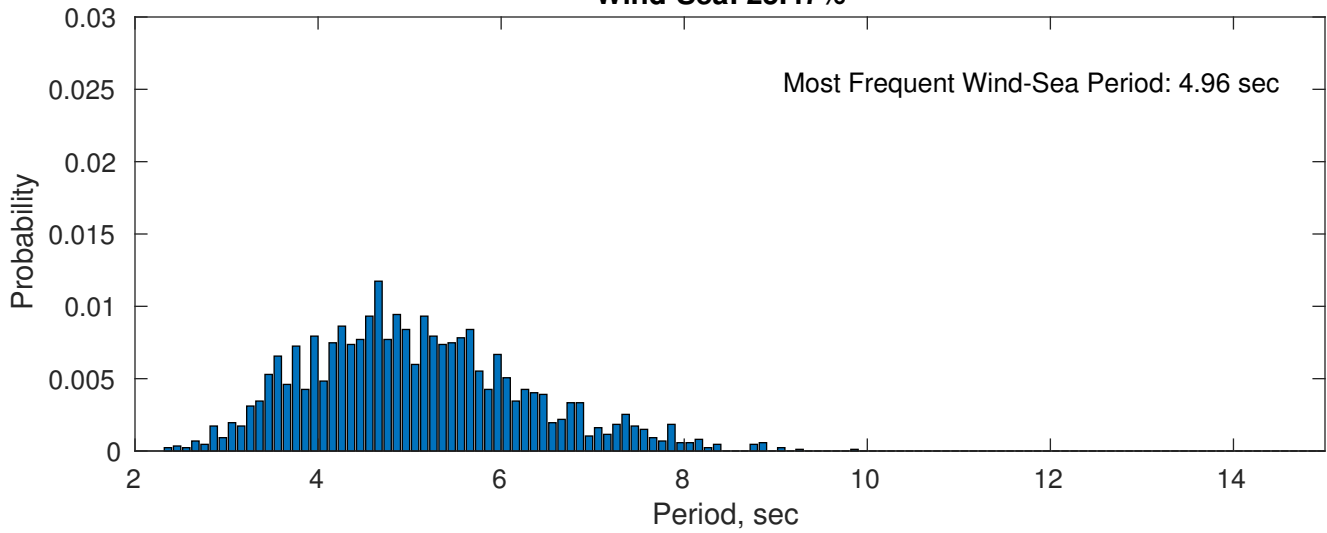
**Swell: 74.53%**



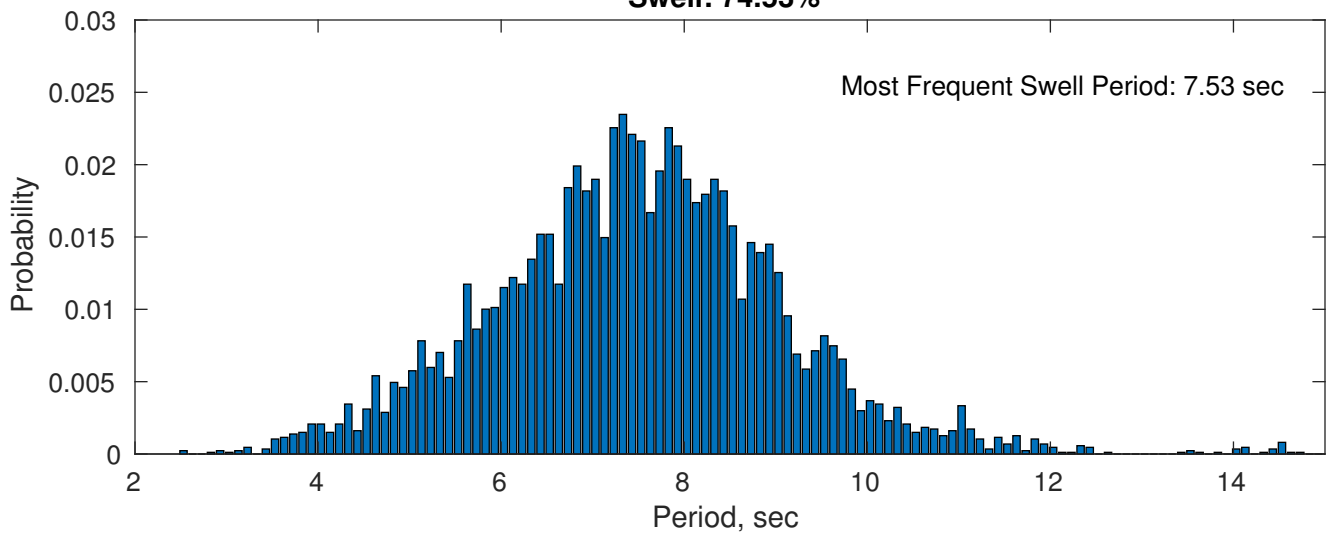
### May Peak Wave Period PDF: 1979 - 2015



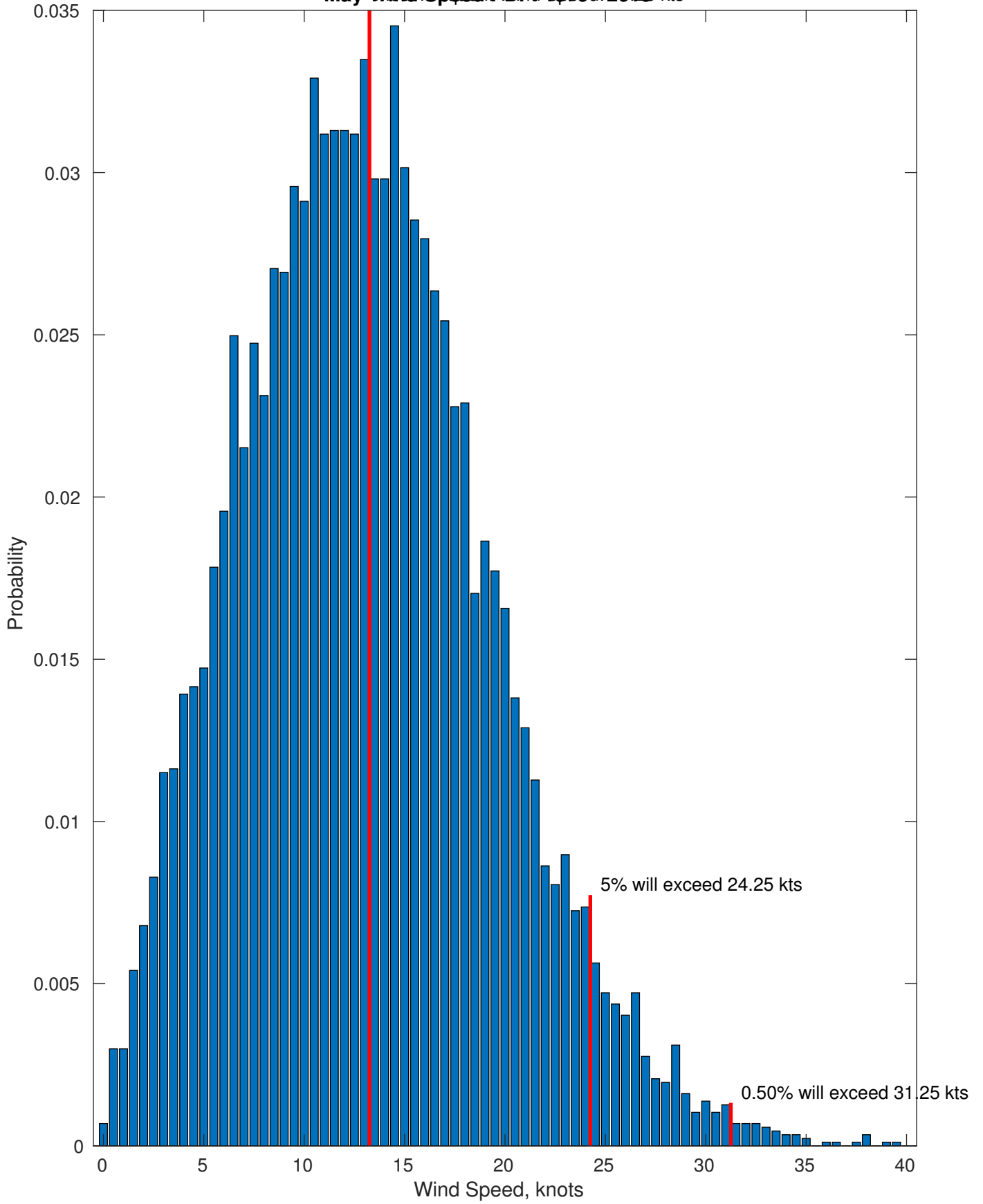
### Wind-Sea: 25.47%



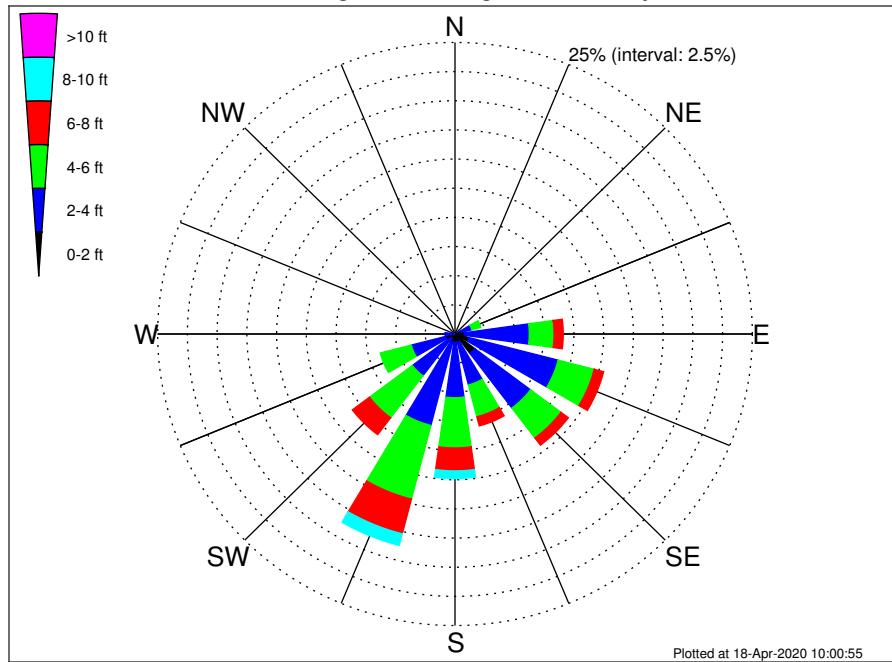
### Swell: 74.53%



May Wind Speed PDF 1979-2015 kts



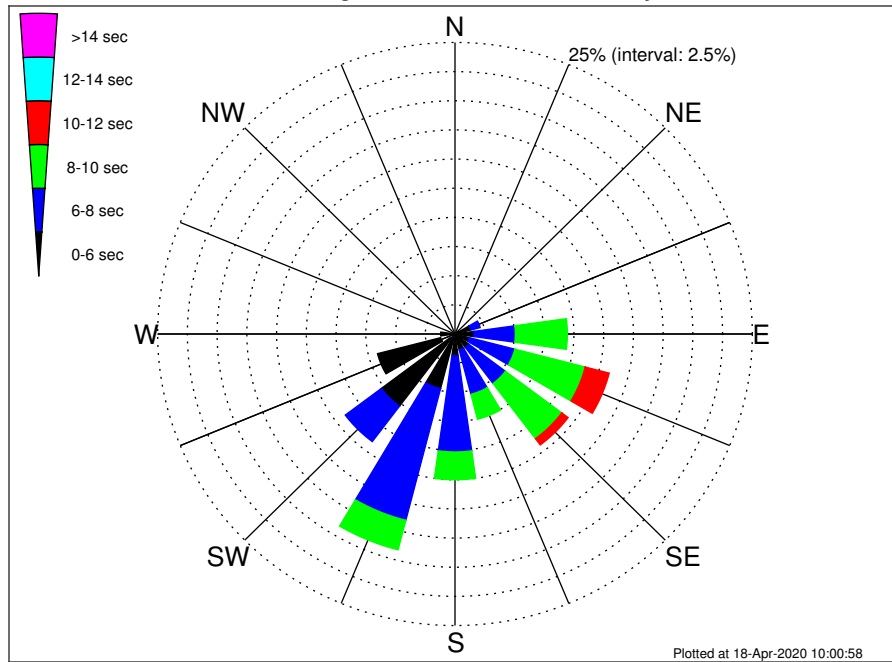
OCS A-0501 North Climatological WaveHeight Rose for May: 1979 - 2015



Joint Frequency Distribution Table

	N	NNE	NE	ENE	E	ESE	SE	SSE	S	SSW	SW	WSW	W	WNW	NW	NNW	Total
calm	•	•	•	•	•	0.13	0.16	0.08	0.01	0.01	0.02	•	•	•	•	•	0.41
1 - 2 ft	0.06	0.01	0.02	0.20	0.79	1.10	1.92	0.67	0.70	0.72	0.41	0.81	0.07	•	•	0.01	7.50
2 - 4 ft	0.16	0.33	0.33	1.27	5.45	7.73	5.87	3.76	4.75	7.36	4.05	2.99	0.77	0.20	0.10	0.08	45.22
4 - 6 ft	0.10	0.16	0.25	0.77	2.08	3.13	3.21	2.82	4.30	6.52	4.51	2.69	0.35	0.03	0.06	0.06	31.06
6 - 8 ft	0.06	0.16	0.06	0.16	0.77	0.82	0.77	0.81	1.97	3.07	1.81	0.53	0.02	•	•	•	11.00
8 - 10 ft	0.05	•	0.02	0.05	0.43	0.53	0.07	0.33	0.66	1.02	0.60	0.07	•	•	•	•	3.82
10 - 12 ft	0.01	•	•	•	0.08	0.02	0.03	•	0.13	0.37	0.22	•	•	•	•	•	0.86
12 - 14 ft	•	•	•	•	•	•	•	•	0.01	0.08	0.02	•	•	•	•	•	0.12
14 - 16 ft	•	•	•	•	•	•	•	•	•	•	•	•	•	•	•	•	•
16 - 18 ft	•	•	•	•	•	•	•	•	•	•	•	•	•	•	•	•	•
> 18 ft	•	•	•	•	•	•	•	•	•	•	•	•	•	•	•	•	•
Total	0.44	0.67	0.69	2.44	9.61	13.46	12.04	8.47	12.53	19.17	11.65	7.09	1.21	0.23	0.16	0.15	100.00

OCS A-0501 North Climatological WavePeriod Rose for May: 1979 - 2015

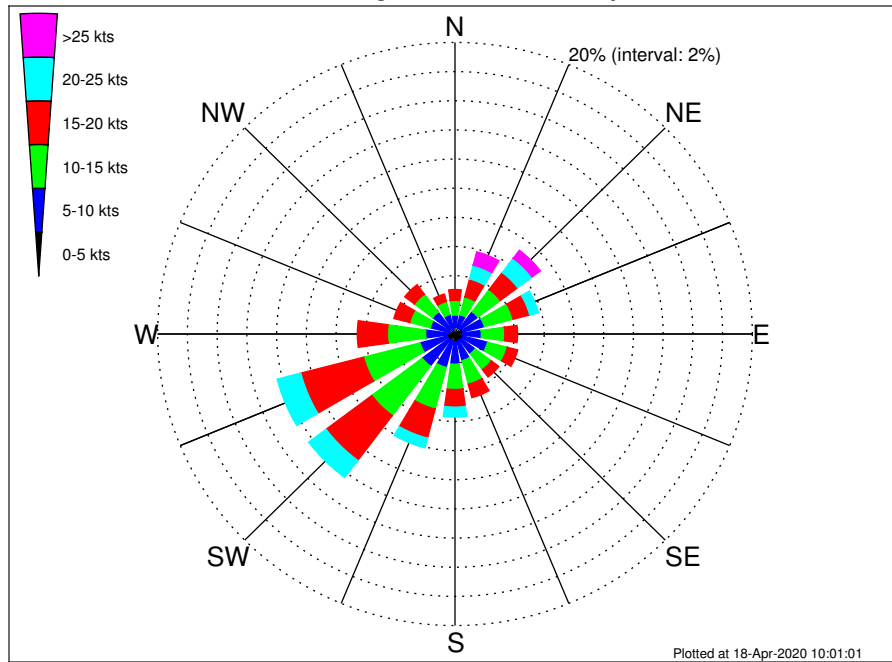


Joint Frequency Distribution Table

	N	NNE	NE	ENE	E	ESE	SE	SSE	S	SSW	SW	WSW	W	WNW	NW	NNW	Total
calm	•	•	•	•	•	•	•	•	•	•	•	•	•	•	•	•	•
1 - 2 sec	•	•	•	•	•	•	•	•	•	•	•	•	•	•	•	•	•
2 - 4 sec	0.23	0.36	0.29	0.33	0.39	0.30	0.22	0.29	0.26	0.32	0.52	1.24	0.41	0.09	0.09	0.10	5.45
4 - 6 sec	0.21	0.31	0.39	1.04	1.21	0.96	1.23	1.13	1.61	4.52	7.24	5.49	0.79	0.14	0.07	0.05	26.38
6 - 8 sec	•	•	0.01	0.82	3.48	3.95	3.87	3.92	8.24	11.66	3.80	0.36	•	•	•	•	40.09
8 - 10 sec	•	•	•	0.25	4.37	6.11	5.93	2.21	2.38	2.61	0.09	•	•	•	•	•	23.96
10 - 12 sec	•	•	•	•	0.16	2.08	0.67	0.44	0.03	0.06	•	•	•	•	•	•	3.44
12 - 14 sec	•	•	•	•	•	0.07	0.13	0.08	•	•	•	•	•	•	•	•	0.28
14 - 16 sec	•	•	•	•	•	•	•	0.36	•	•	•	•	•	•	•	•	0.36
18 - 20 sec	•	•	•	•	•	•	•	0.05	•	•	•	•	•	•	•	•	0.05
22 - 24 sec	•	•	•	•	•	•	•	•	•	•	•	•	•	•	•	•	•
Total	0.44	0.67	0.69	2.44	9.61	13.46	12.04	8.47	12.53	19.17	11.65	7.09	1.21	0.23	0.16	0.15	100.00



OCS A-0501 North Climatological Wind Rose for May: 1979 - 2015



Joint Frequency Distribution Table

	N	NNE	NE	ENE	E	ESE	SE	SSE	S	SSW	SW	WSW	W	WNW	NW	NNW	Total
calm	•	0.02	0.01	0.02	0.06	0.06	0.01	•	•	0.02	0.03	0.01	0.03	0.02	0.02	0.03	0.37
0 - 5 kts	0.45	0.45	0.45	0.55	0.48	0.51	0.51	0.51	0.53	0.45	0.52	0.52	0.48	0.35	0.45	0.28	7.47
5 - 10 kts	0.85	0.89	1.46	1.46	1.23	1.70	1.19	1.38	1.54	1.90	2.21	1.90	1.46	1.36	1.40	1.07	23.00
10 - 15 kts	1.01	1.27	1.90	2.00	1.58	1.37	1.36	1.67	1.74	2.95	4.25	3.92	2.57	1.43	1.54	0.92	31.46
15 - 20 kts	0.74	1.28	1.46	1.15	0.86	0.72	0.63	0.96	1.21	2.06	3.86	4.36	2.03	1.09	0.82	0.53	23.75
20 - 25 kts	0.35	0.98	1.22	0.61	0.24	0.28	0.17	0.41	0.68	0.69	1.46	1.65	0.43	0.46	0.30	0.13	10.05
25 - 30 kts	0.16	0.63	0.58	0.17	0.08	0.06	0.07	0.06	0.13	0.29	0.29	0.32	0.06	0.07	0.05	0.03	3.04
30 - 35 kts	0.16	0.26	0.09	0.03	•	0.02	•	0.01	0.02	0.03	0.02	0.02	0.02	0.03	•	•	0.75
35 - 40 kts	0.03	0.05	0.02	0.01	•	•	•	•	•	•	•	•	•	•	•	•	0.12
40 - 45 kts	•	•	•	•	•	•	•	•	•	•	•	•	•	•	•	•	•
45 - 50 kts	•	•	•	•	•	•	•	•	•	•	•	•	•	•	•	•	•
Total	3.75	5.82	7.19	6.02	4.53	4.72	3.94	4.99	5.85	8.39	12.64	12.70	7.08	4.81	4.58	2.99	100.00