

## OCS A-0501 North - November

### Weather Days

Wave Height > 5.0 ft Mean: 13.3 days Range: 10.9 - 15.7 days p50: 14 days p90: 18 days

Wave Height > 6.0 ft Mean: 9.1 days Range: 6.7 - 11.6 days p50: 10 days p90: 14 days

Wave Height > 7.0 ft Mean: 6.3 days Range: 4.0 - 8.7 days p50: 7 days p90: 10 days

### Working Window Probability

Wave Height < 5.0 ft 3 days or longer: 34%

5 days or longer: 4%

7 days or longer: 2%

Wave Height < 6.0 ft 3 days or longer: 49%

5 days or longer: 13%

7 days or longer: 6%

Wave Height < 7.0 ft 3 days or longer: 63%

5 days or longer: 26%

7 days or longer: 14%

### Waves

Mean Height: 4 - 6 ft

The wave heights will occasionally reach 14 - 16 ft, but rarely higher.

Mean Period: 6 - 8 sec

The wave periods will occasionally reach 12 - 14 sec, but rarely longer.

Principle Direction, from: SW

WindSea/Swell: 40% / 60%

### Winds

Mean Speed: 15 - 20 kts

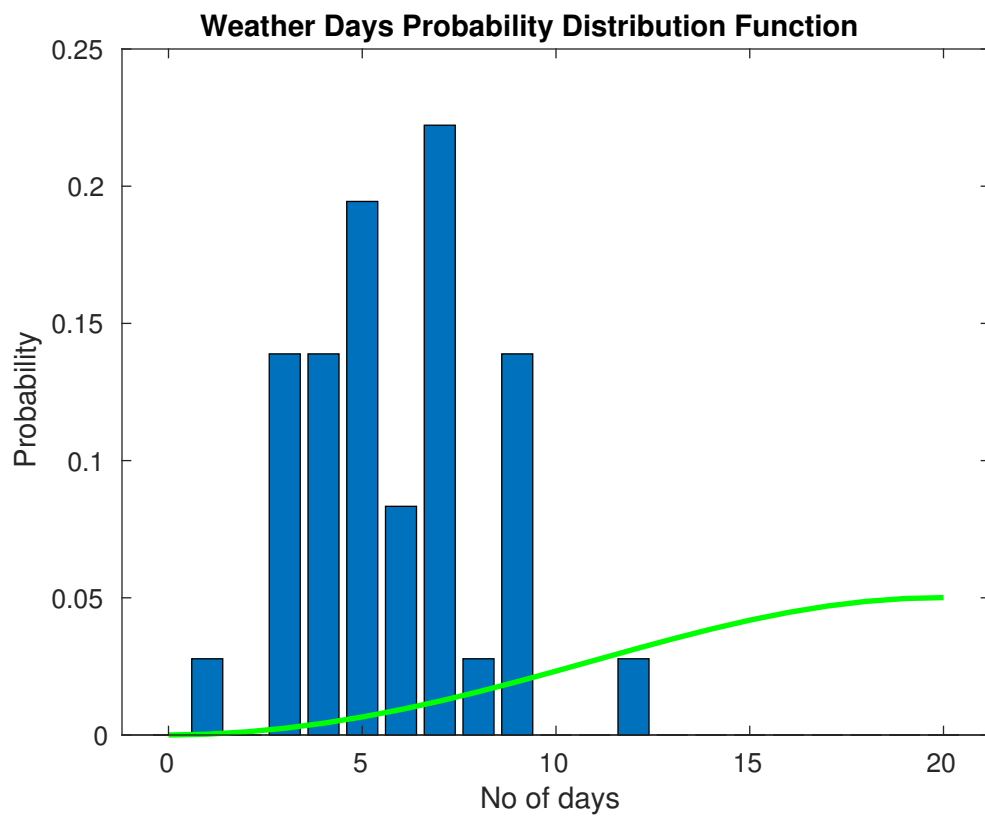
The winds will occasionally reach 35 - 40 kts, but rarely greater.

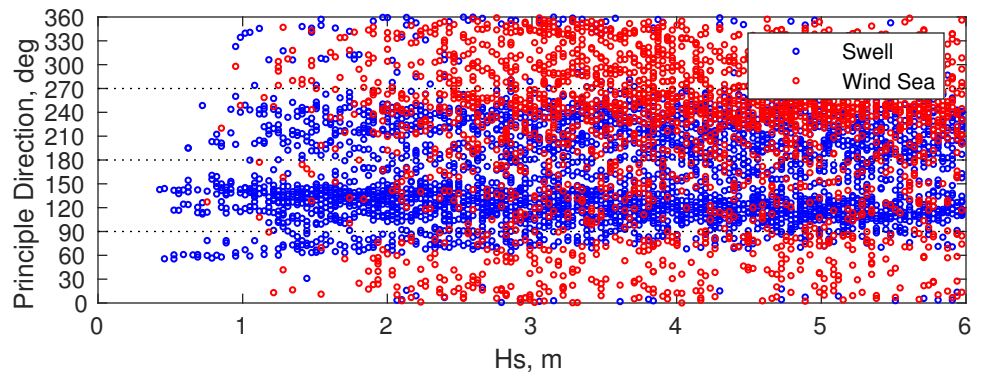
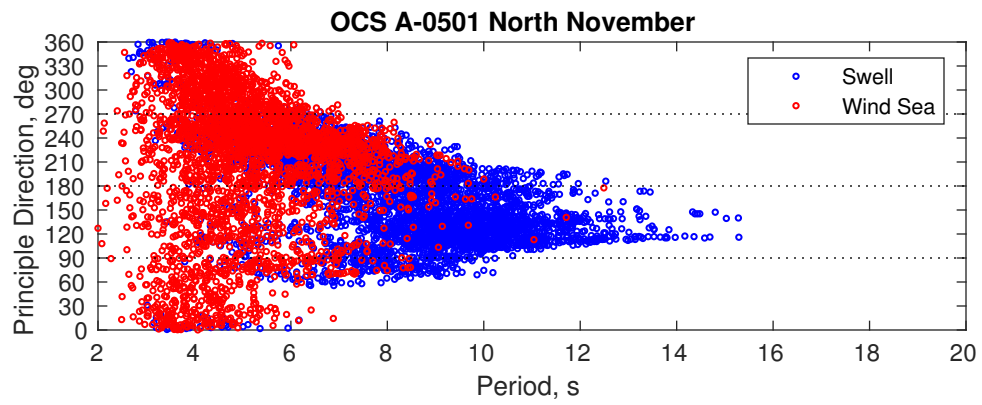
Principle Direction, from: NW

### Severe Storms

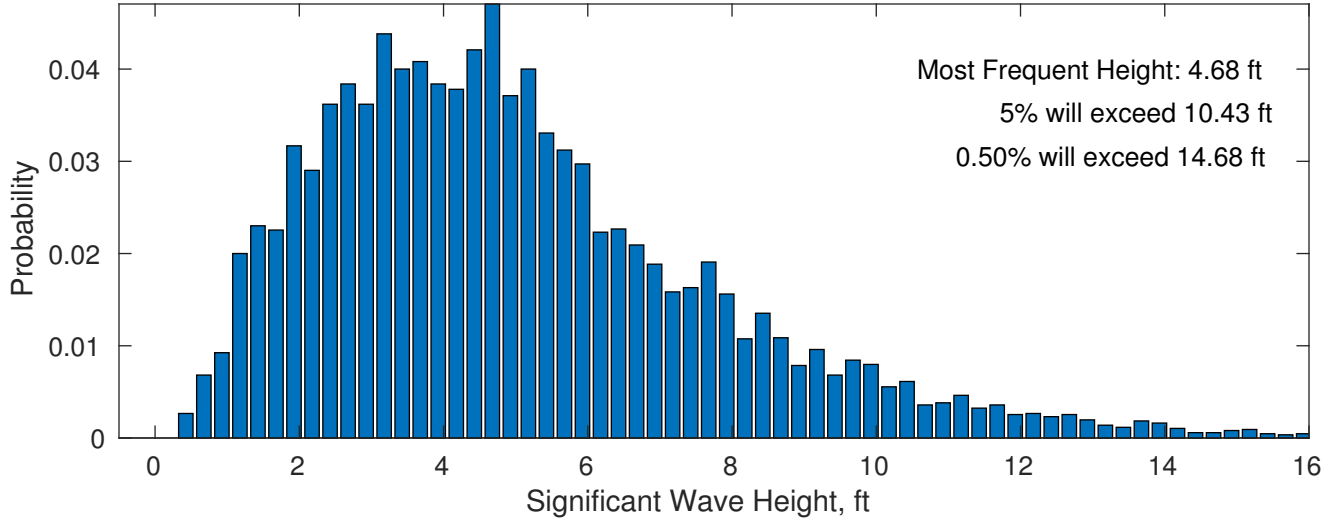
There is a 75 % chance of a storm with winds peaking above 34 kts.

There is a 72 % chance of a storm with waves peaking at 4m (13 ft) or greater.

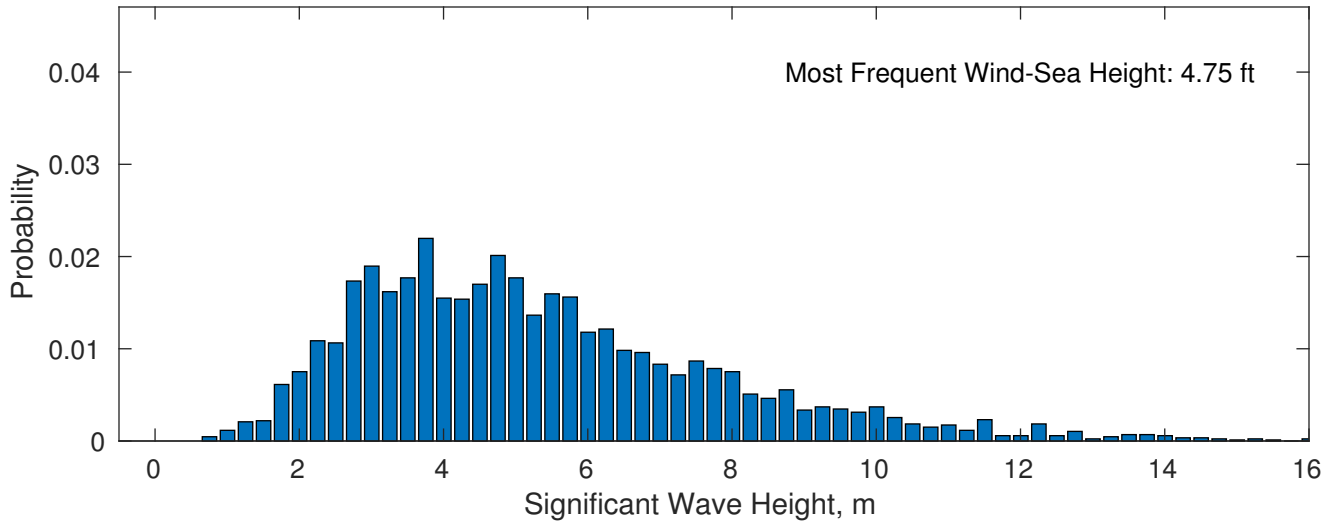




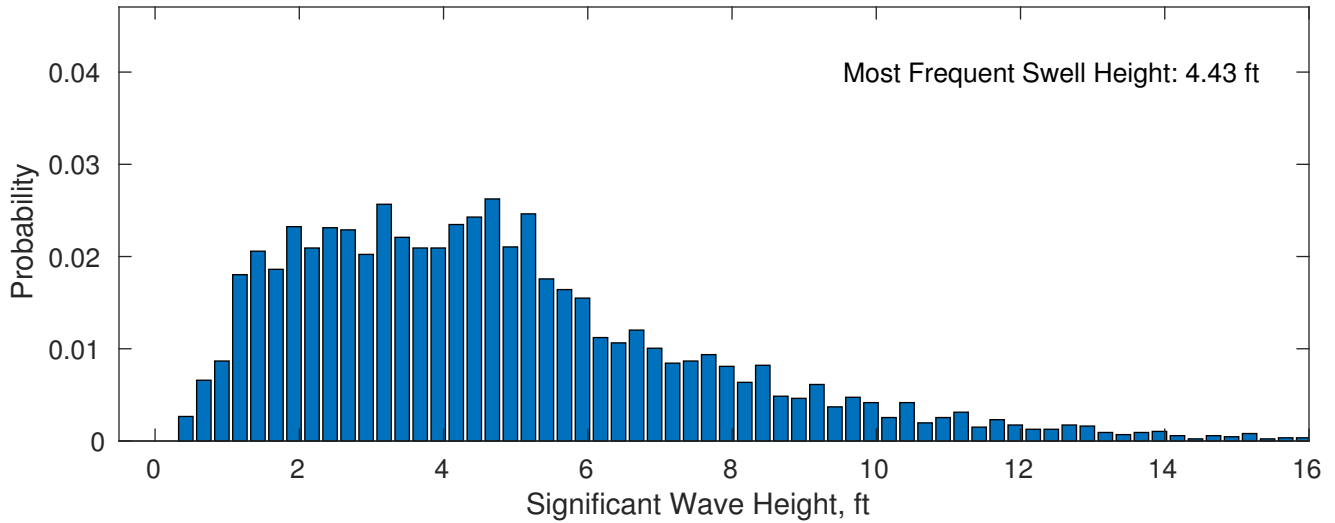
**November Wave Height PDF: 1979 - 2015**



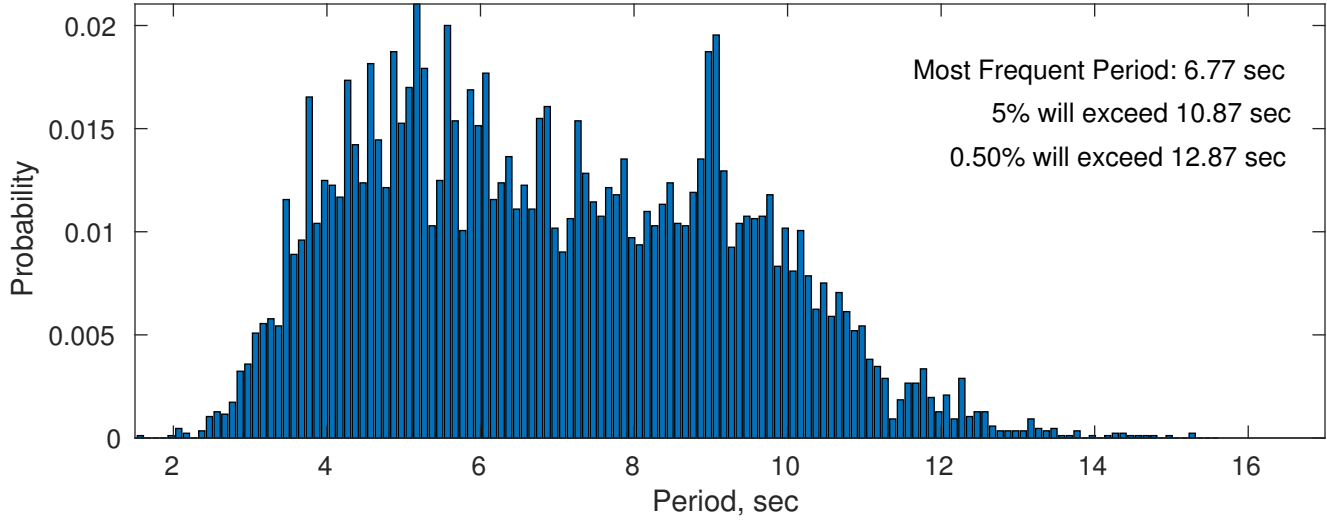
**Wind-Sea: 40.09%**



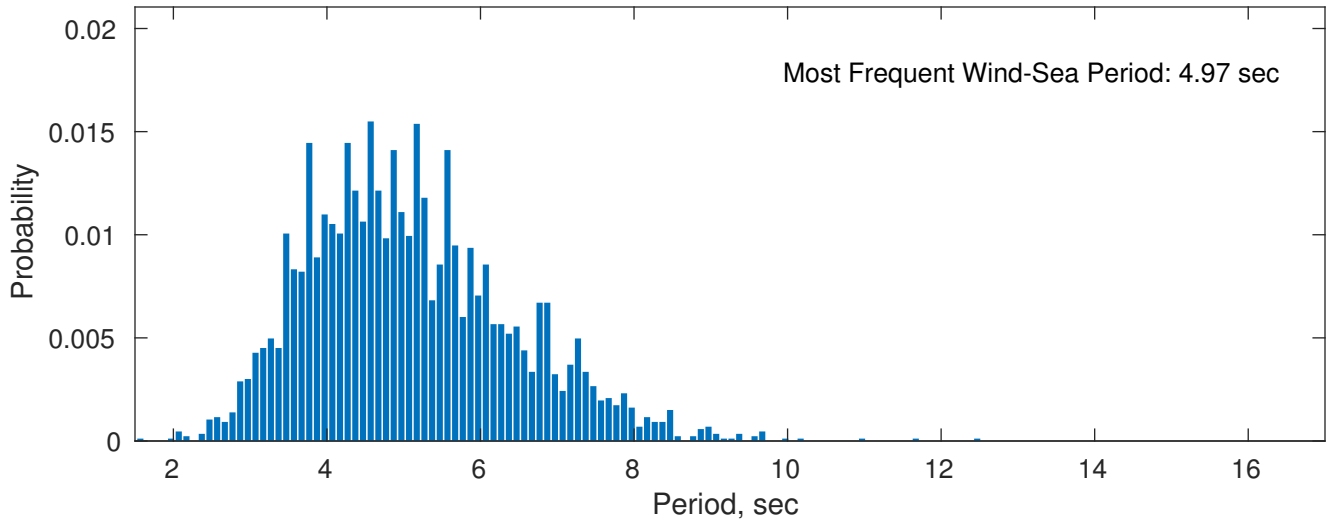
**Swell: 59.91%**



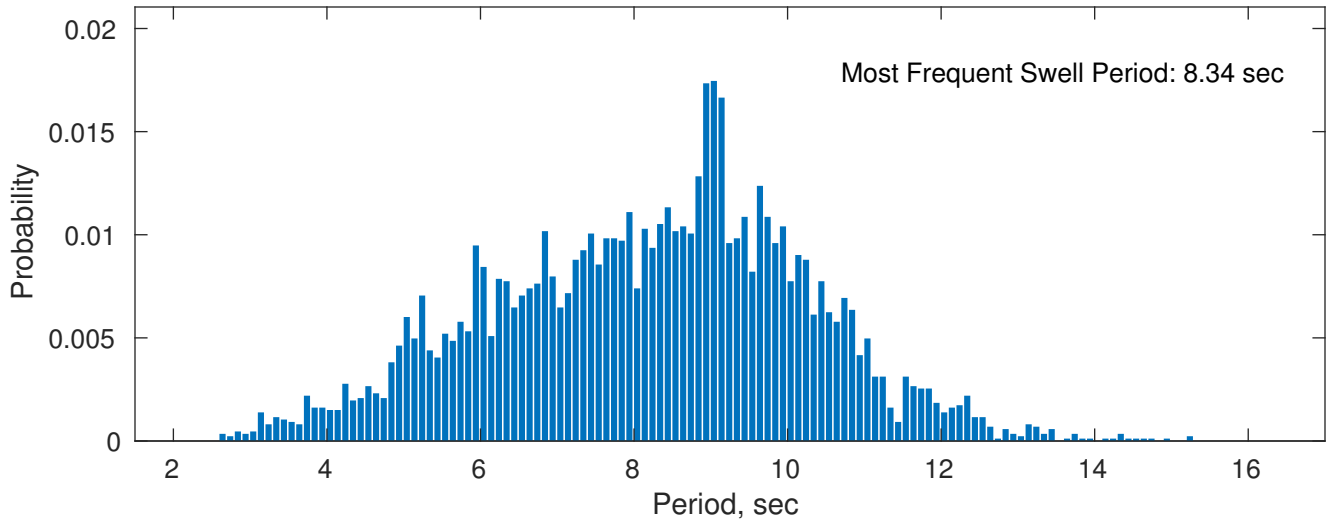
**November Peak Wave Period PDF: 1979 - 2015**



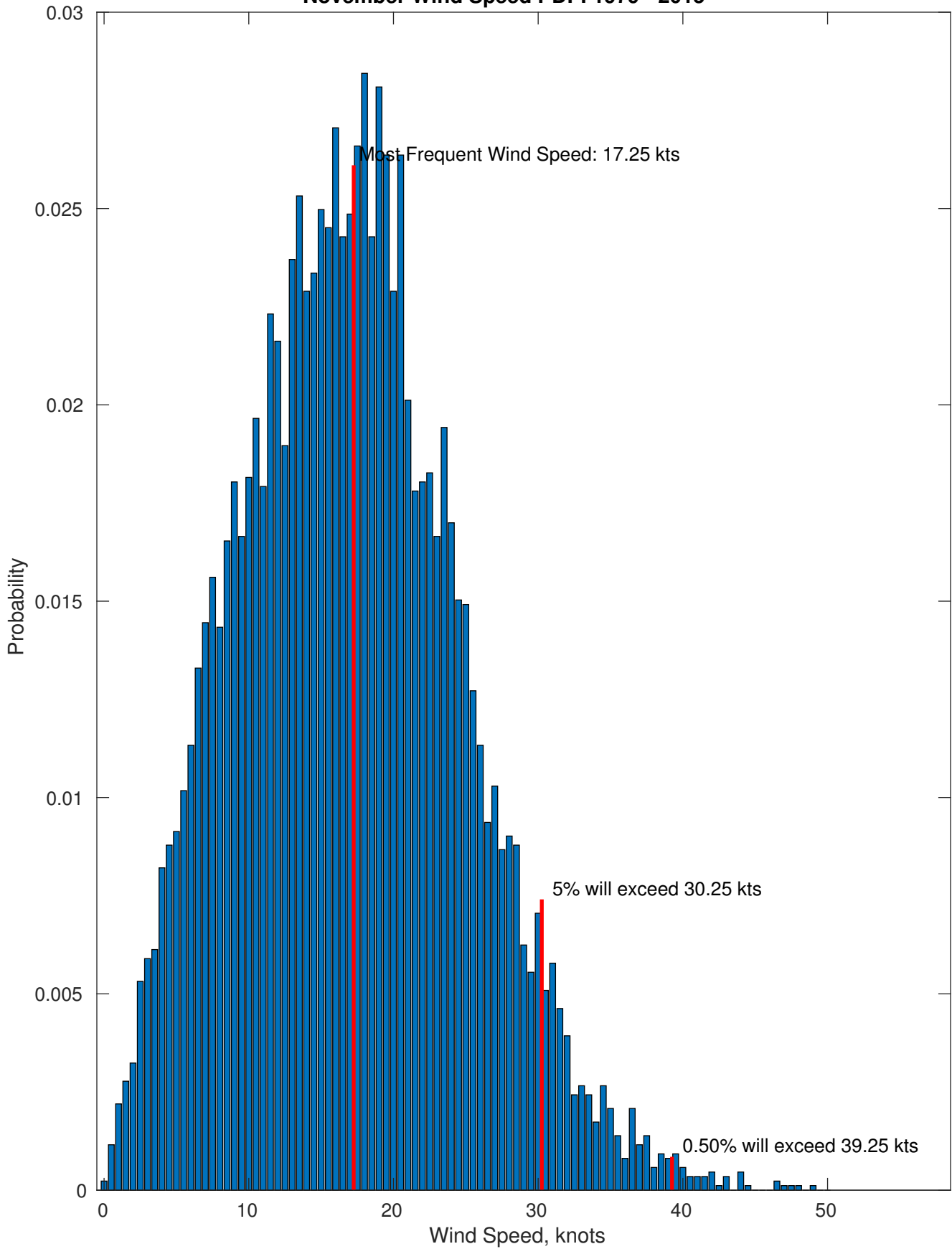
**Wind-Sea: 40.09%**



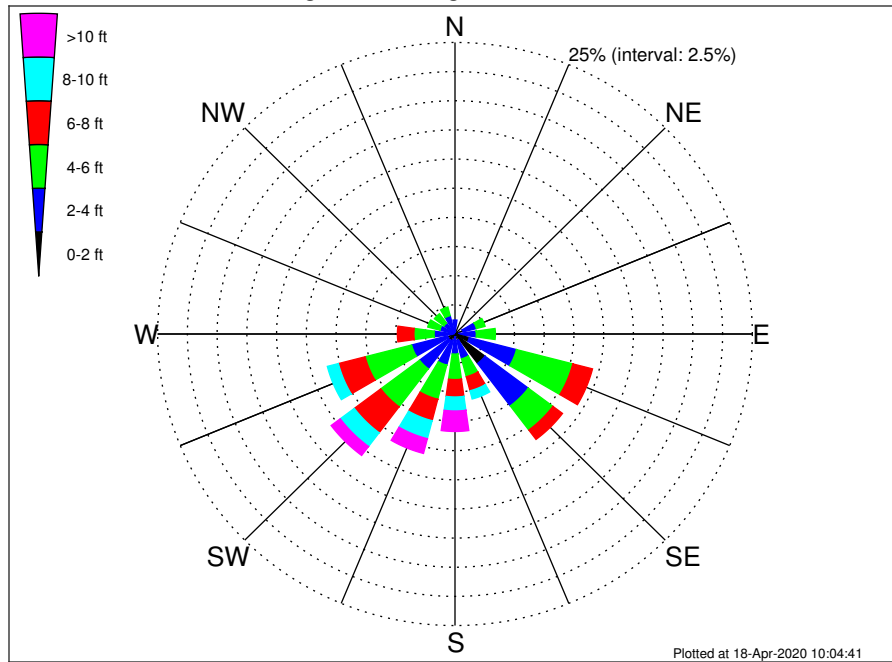
**Swell: 59.91%**



November Wind Speed PDF: 1979 - 2015



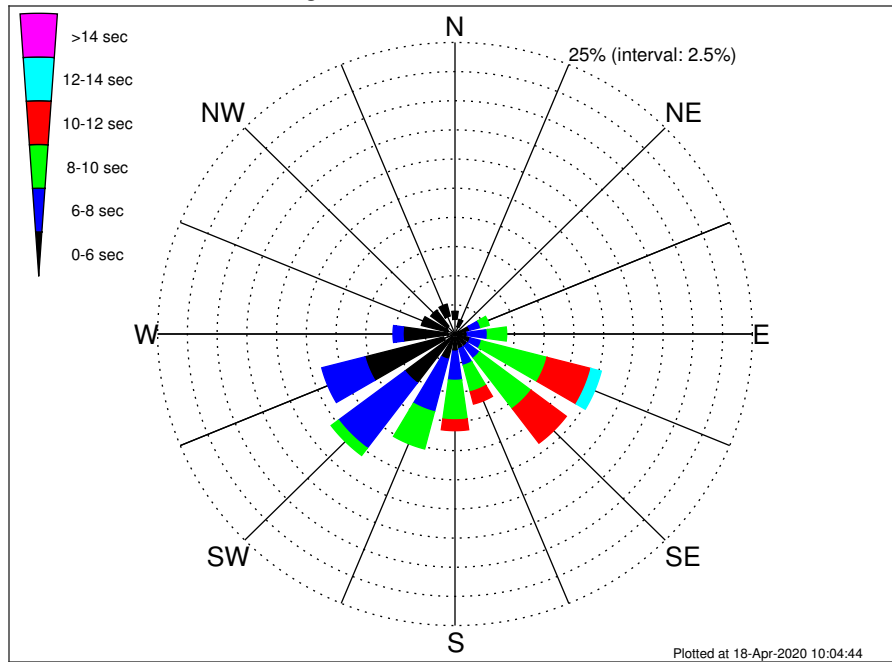
OCS A-0501 North Climatological WaveHeight Rose for November: 1979 - 2015



Joint Frequency Distribution Table

	N	NNE	NE	ENE	E	ESE	SE	SSE	S	SSW	SW	WSW	W	WNW	NW	NNW	Total
calm	•	•	0.02	0.16	•	0.22	0.38	0.12	•	0.09	0.02	0.05	0.01	0.01	0.01	0.01	1.11
1 - 2 ft	0.06	0.09	0.07	0.54	0.34	1.03	2.77	0.46	0.23	0.46	0.64	0.60	0.21	0.09	0.21	0.18	7.99
2 - 4 ft	1.14	0.58	0.36	1.16	1.46	4.09	4.57	1.62	1.49	2.20	3.08	3.12	1.54	1.21	0.95	1.43	29.99
4 - 6 ft	0.47	0.34	0.37	0.75	1.61	4.89	2.59	1.58	2.19	3.03	4.08	4.04	1.70	1.05	1.01	0.76	30.45
6 - 8 ft	0.21	0.21	0.07	0.21	0.52	1.71	1.01	1.25	1.49	1.90	2.79	2.32	1.39	0.53	0.32	0.20	16.12
8 - 10 ft	0.05	0.07	0.01	0.14	0.39	0.60	0.42	0.73	1.20	1.60	1.48	0.96	0.32	0.08	0.07	0.02	8.14
10 - 12 ft	0.03	0.03	•	0.02	0.07	0.15	0.22	0.34	0.91	0.86	0.61	0.40	0.05	0.01	•	0.03	3.75
12 - 14 ft	•	•	•	•	0.01	0.05	0.13	0.14	0.61	0.29	0.21	0.17	0.01	•	•	•	1.62
14 - 16 ft	•	0.01	•	•	0.06	0.02	0.10	0.03	0.16	0.10	0.10	•	•	•	•	•	0.60
16 - 18 ft	•	0.01	•	•	•	•	•	0.05	0.03	0.05	0.03	•	•	•	•	•	0.17
> 18 ft	•	•	•	•	•	•	•	0.01	0.03	0.01	•	•	•	•	•	•	0.06
Total	1.97	1.34	0.90	2.98	4.45	12.76	12.19	6.32	8.36	10.58	13.04	11.67	5.23	2.99	2.57	2.65	100.00

OCS A-0501 North Climatological WavePeriod Rose for November: 1979 - 2015

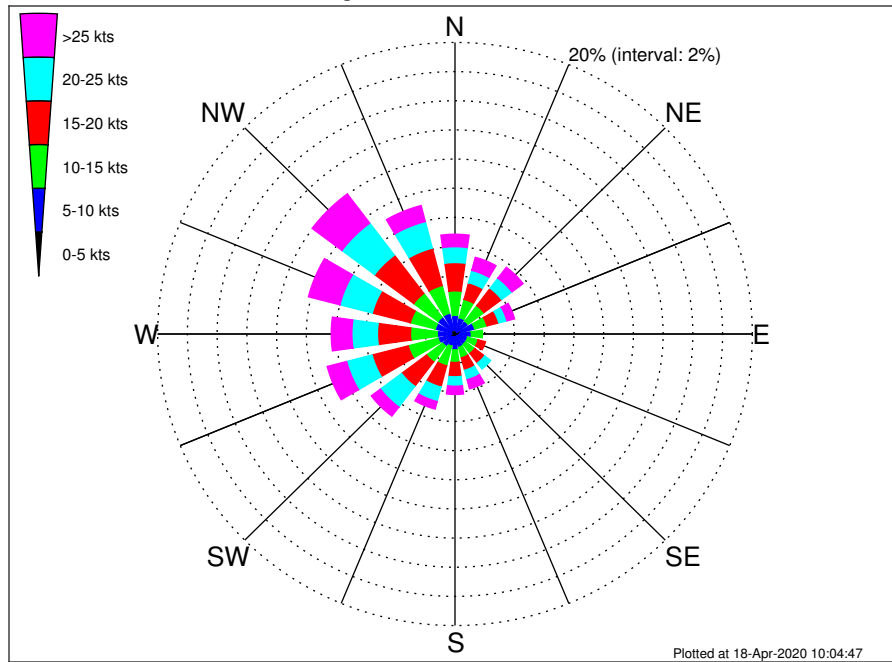


Joint Frequency Distribution Table

	N	NNE	NE	ENE	E	ESE	SE	SSE	S	SSW	SW	WSW	W	WNW	NW	NNW	Total
calm	•	•	•	•	•	•	•	•	•	•	•	•	•	•	•	•	•
1 - 2 sec	•	•	•	•	•	•	0.01	•	•	•	0.01	•	•	•	•	•	0.02
2 - 4 sec	1.26	0.65	0.40	0.39	0.28	0.25	0.36	0.36	0.30	0.40	0.35	0.99	0.59	0.65	0.84	1.60	9.68
4 - 6 sec	0.69	0.65	0.47	0.89	0.76	1.08	0.91	0.94	1.18	1.84	4.91	6.83	3.78	2.28	1.71	1.05	29.98
6 - 8 sec	0.01	0.05	0.02	0.95	1.69	0.97	1.29	1.48	2.50	4.65	7.00	3.75	0.84	0.07	0.01	•	25.27
8 - 10 sec	•	•	•	0.74	1.62	5.70	5.43	2.35	3.39	3.30	0.77	0.09	0.01	•	•	•	23.40
10 - 12 sec	•	•	•	0.01	0.10	3.82	3.71	1.09	0.92	0.39	•	•	•	•	•	•	10.05
12 - 14 sec	•	•	•	•	•	0.89	0.40	0.09	0.07	•	•	•	•	•	•	•	1.46
14 - 16 sec	•	•	•	•	•	0.06	0.06	0.02	•	•	•	•	•	•	•	•	0.14
18 - 20 sec	•	•	•	•	•	•	•	•	•	•	•	•	•	•	•	•	•
22 - 24 sec	•	•	•	•	•	•	•	•	•	•	•	•	•	•	•	•	•
Total	1.97	1.34	0.90	2.98	4.45	12.76	12.19	6.32	8.36	10.58	13.04	11.67	5.23	2.99	2.57	2.65	100.00



OCS A-0501 North Climatological Wind Rose for November: 1979 - 2015



Joint Frequency Distribution Table

	N	NNE	NE	ENE	E	ESE	SE	SSE	S	SSW	SW	WSW	W	WNW	NW	NNW	Total
calm	0.01	0.02	•	0.01	0.01	•	0.01	0.02	0.01	•	•	•	0.02	0.01	•	•	0.14
0 - 5 kts	0.29	0.21	0.18	0.42	0.32	0.27	0.16	0.25	0.21	0.22	0.28	0.35	0.21	0.29	0.32	0.28	4.25
5 - 10 kts	0.98	0.92	0.91	0.94	0.76	0.61	0.72	0.67	0.87	0.65	0.76	0.83	0.96	1.06	1.11	1.19	13.96
10 - 15 kts	1.68	1.29	1.34	0.86	0.75	0.73	0.77	0.74	0.87	1.39	1.35	2.07	1.80	1.73	2.05	1.97	21.39
15 - 20 kts	1.94	1.18	1.49	0.82	0.38	0.51	0.83	0.88	0.98	1.50	2.10	2.51	2.22	2.65	3.30	2.65	25.95
20 - 25 kts	1.09	0.88	0.87	0.57	0.31	0.43	0.51	0.67	0.65	1.03	1.78	1.77	1.72	2.25	2.75	1.88	19.16
25 - 30 kts	0.53	0.46	0.54	0.35	0.09	0.13	0.22	0.39	0.36	0.38	0.54	0.91	0.89	1.13	1.87	0.88	9.69
30 - 35 kts	0.17	0.31	0.28	0.15	0.05	0.12	0.12	0.18	0.15	0.13	0.20	0.35	0.27	0.66	0.53	0.18	3.84
35 - 40 kts	0.10	0.09	0.06	0.03	0.05	0.03	•	0.05	0.06	0.02	0.03	0.09	0.16	0.30	0.08	0.05	1.21
40 - 45 kts	0.02	•	0.03	•	0.01	0.01	•	0.02	•	•	•	•	0.07	0.09	0.02	0.02	0.31
45 - 50 kts	0.02	0.06	0.02	•	•	•	•	•	•	•	•	•	•	•	•	•	0.10
Total	6.84	5.43	5.73	4.14	2.74	2.83	3.34	3.88	4.15	5.32	7.05	8.88	8.32	10.19	12.04	9.10	100.00