

OCS A-0501 North - October

Weather Days

Wave Height > 5.0 ft Mean: 10.1 days Range: 7.2 - 13.0 days p50: 11 days p90: 14 days

Wave Height > 6.0 ft Mean: 6.5 days Range: 4.0 - 8.9 days p50: 7 days p90: 12 days

Wave Height > 7.0 ft Mean: 4.2 days Range: 2.2 - 6.3 days p50: 4 days p90: 8 days

Working Window Probability

Wave Height < 5.0 ft 3 days or longer: 44%

5 days or longer: 11%

7 days or longer: 6%

Wave Height < 6.0 ft 3 days or longer: 58%

5 days or longer: 24%

7 days or longer: 13%

Wave Height < 7.0 ft 3 days or longer: 71%

5 days or longer: 39%

7 days or longer: 27%

Waves

Mean Height: 4 - 6 ft

The wave heights will occasionally reach 12 - 14 ft, but rarely higher.

Mean Period: 6 - 8 sec

The wave periods will occasionally reach 12 - 14 sec, but rarely longer.

Principle Direction, from: ESE

WindSea/Swell: 34% / 66%

Winds

Mean Speed: 10 - 15 kts

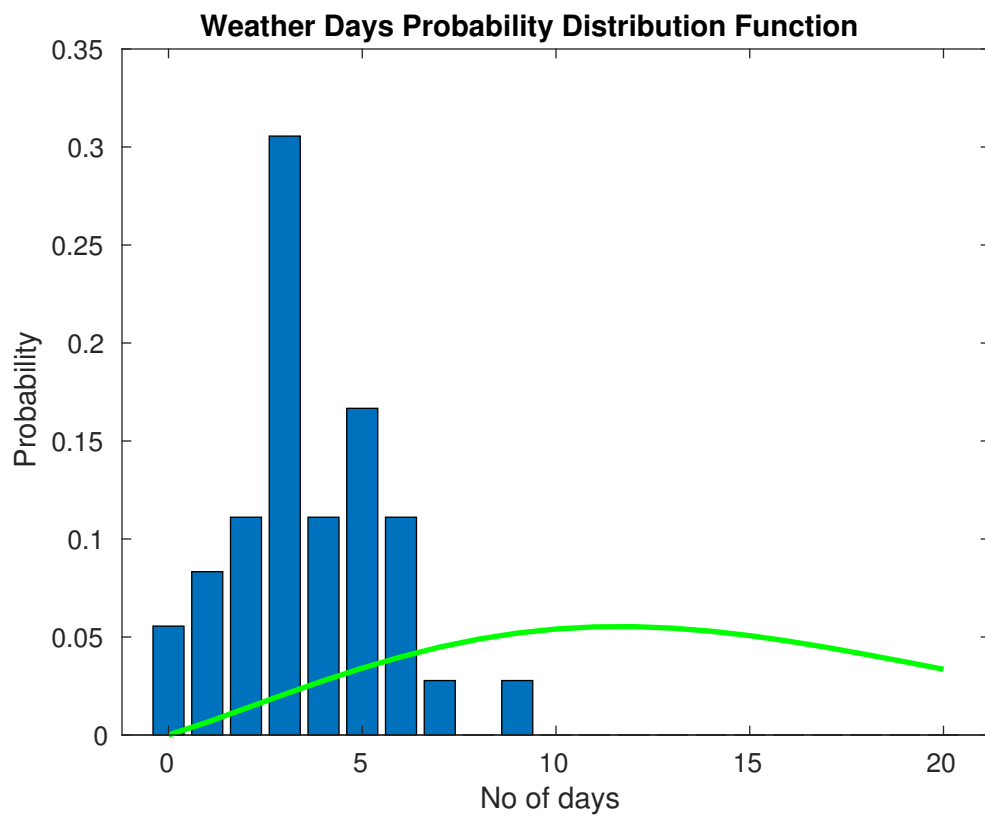
The winds will occasionally reach 35 - 40 kts, but rarely greater.

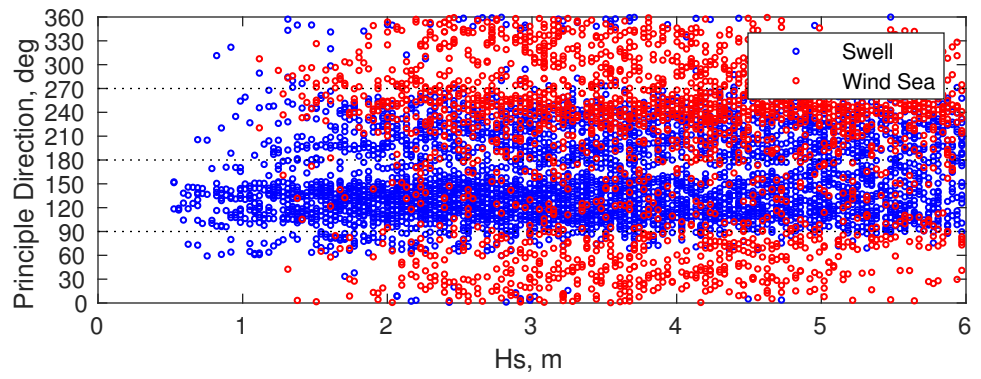
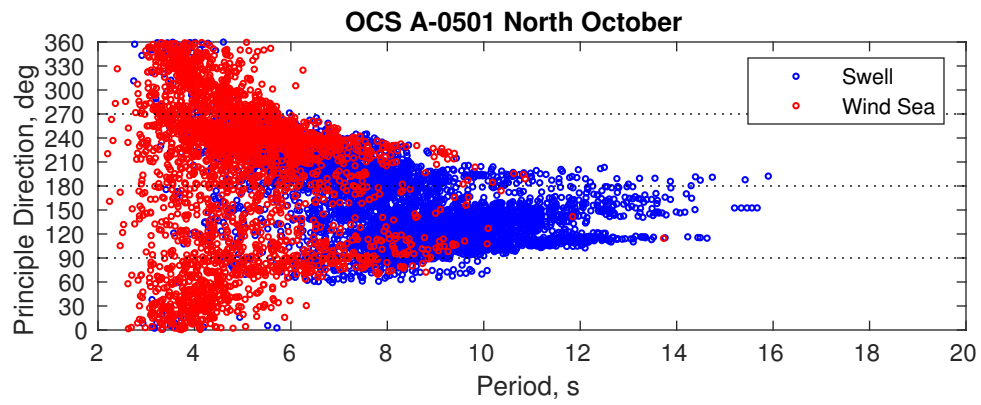
Principle Direction, from: WSW

Severe Storms

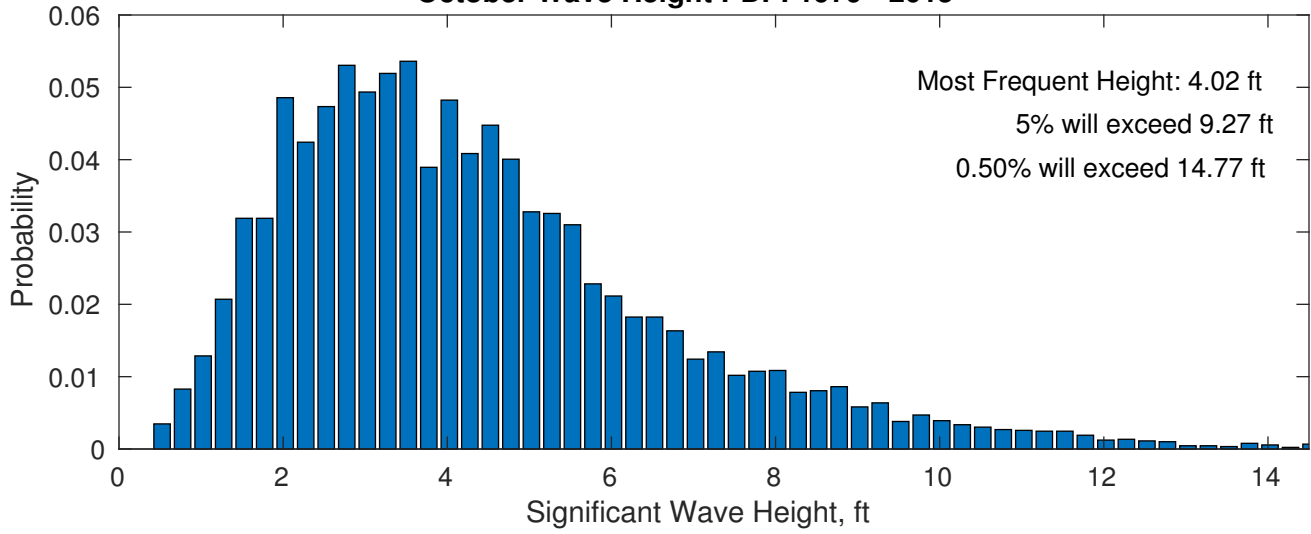
There is a 44 % chance of a storm with winds peaking above 34 kts.

There is a 33 % chance of a storm with waves peaking at 4m (13 ft) or greater.

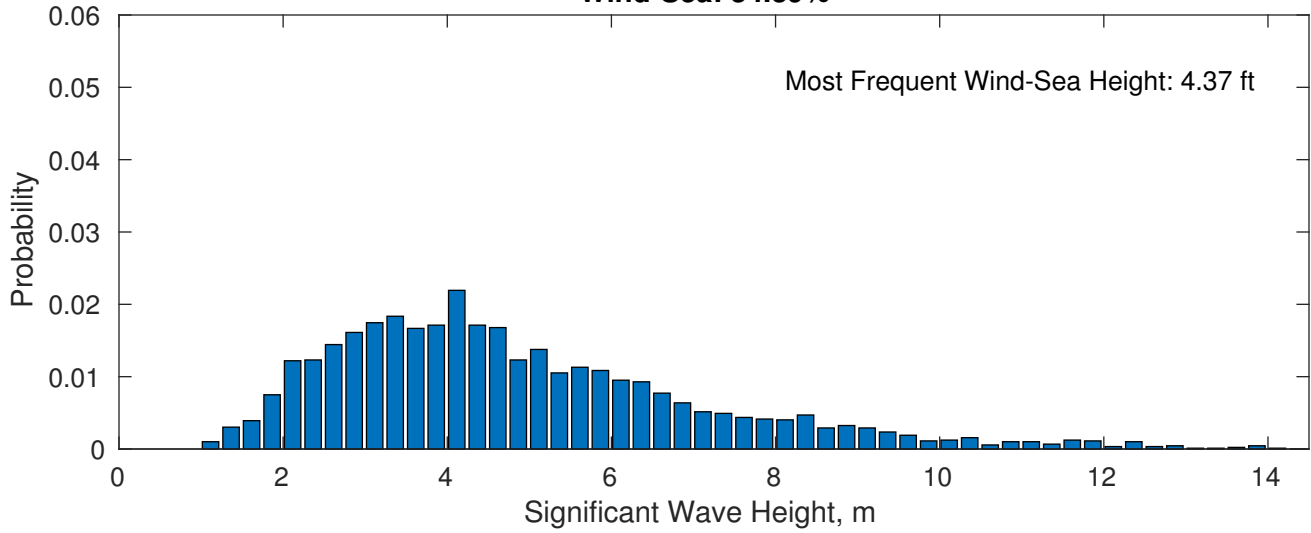




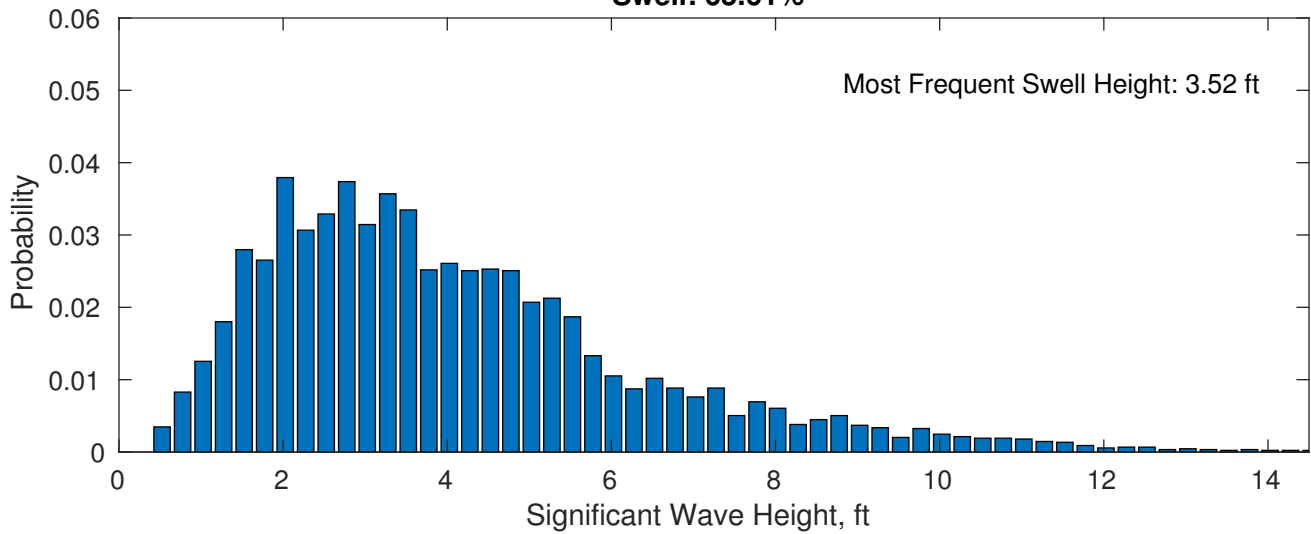
October Wave Height PDF: 1979 - 2015



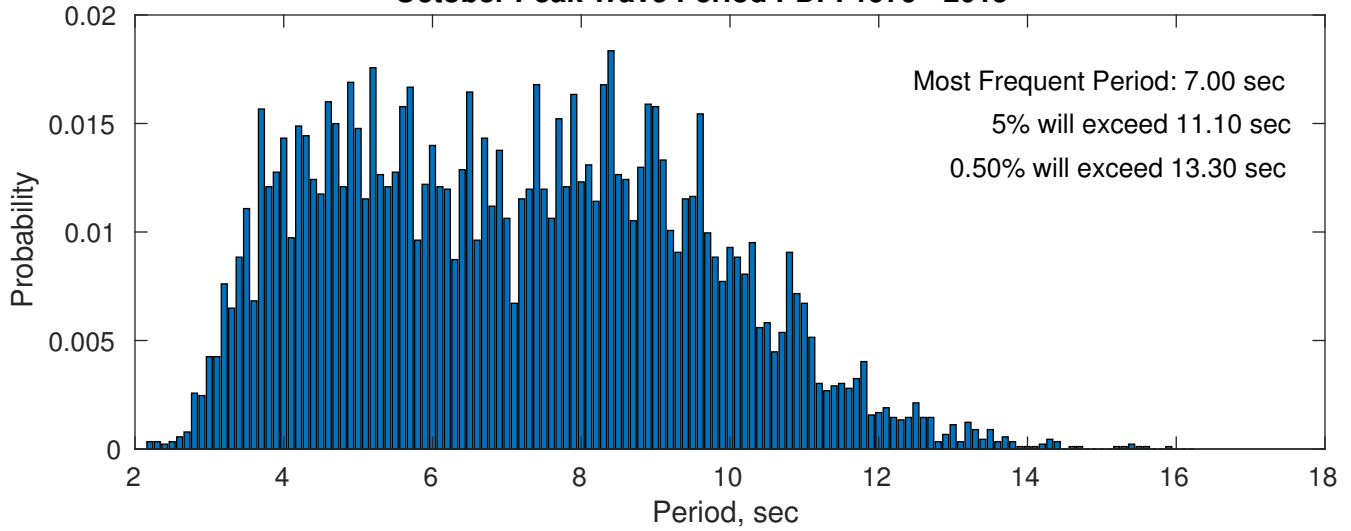
Wind-Sea: 34.39%



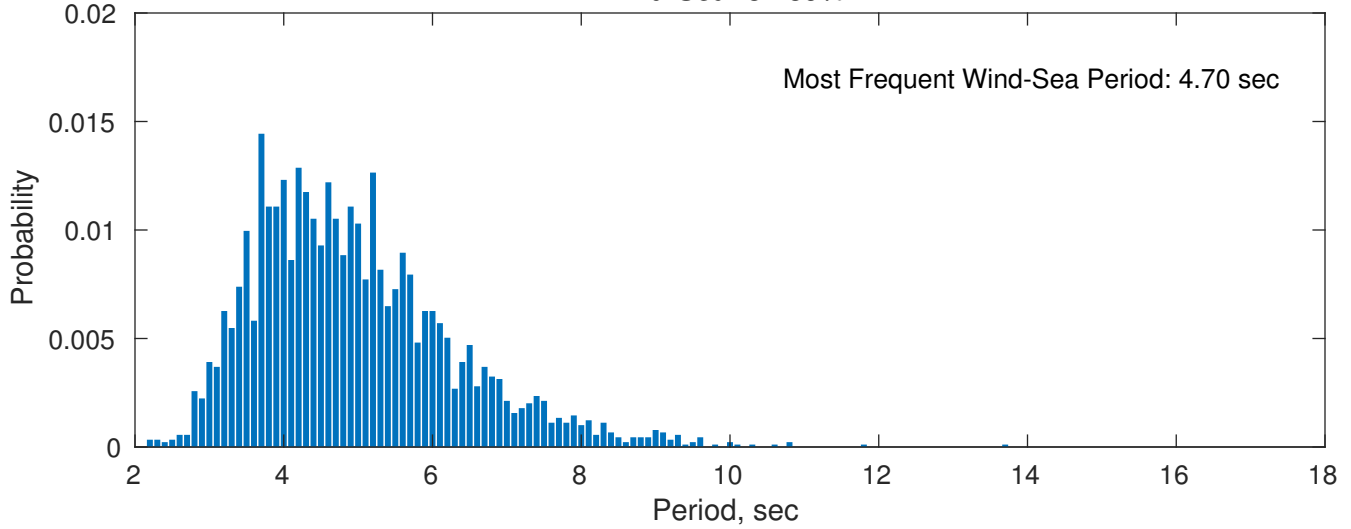
Swell: 65.61%



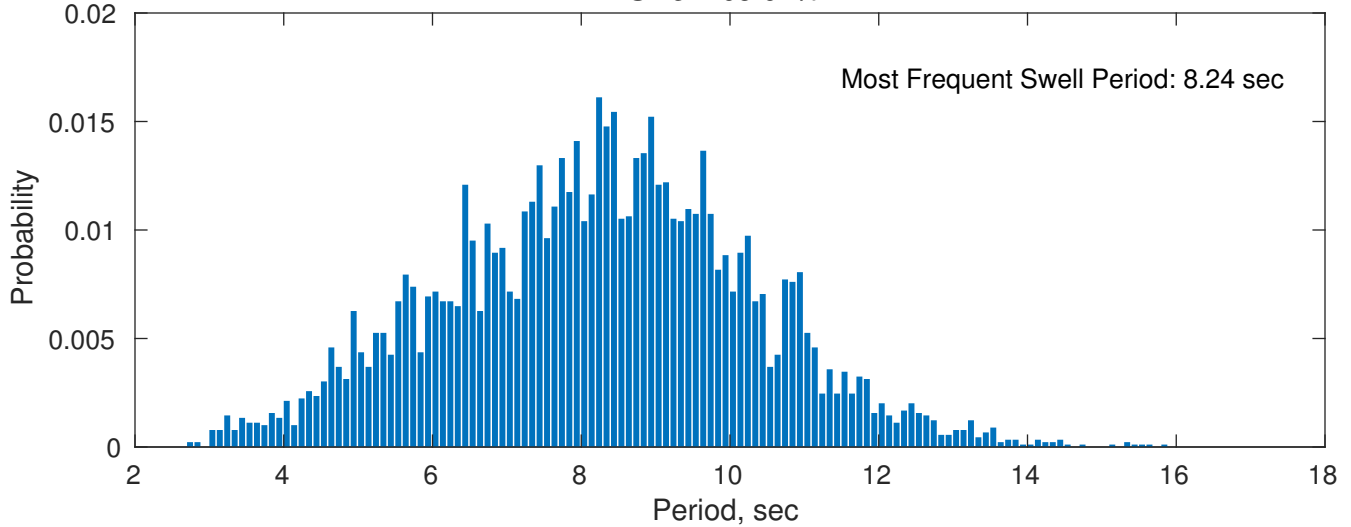
October Peak Wave Period PDF: 1979 - 2015



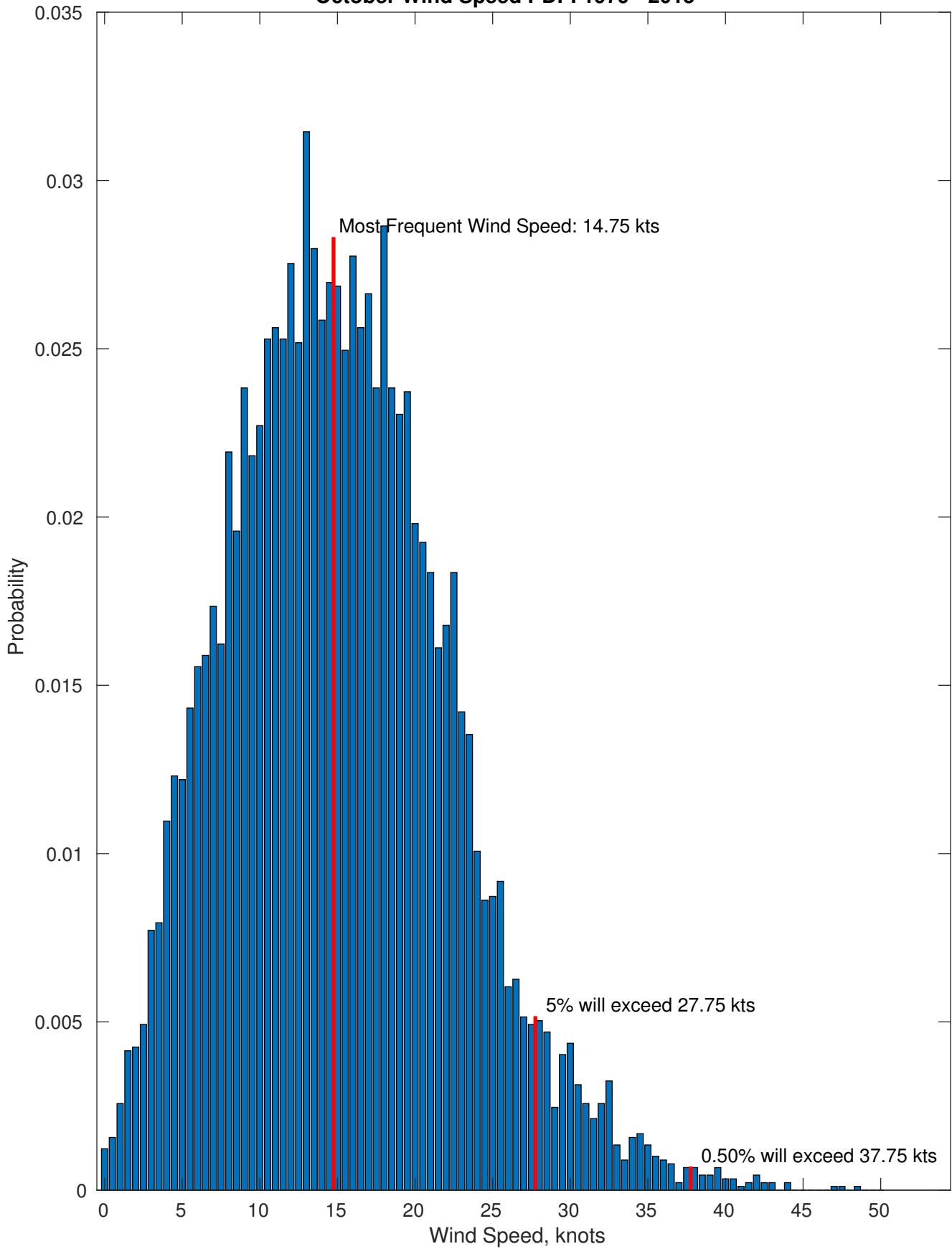
Wind-Sea: 34.39%



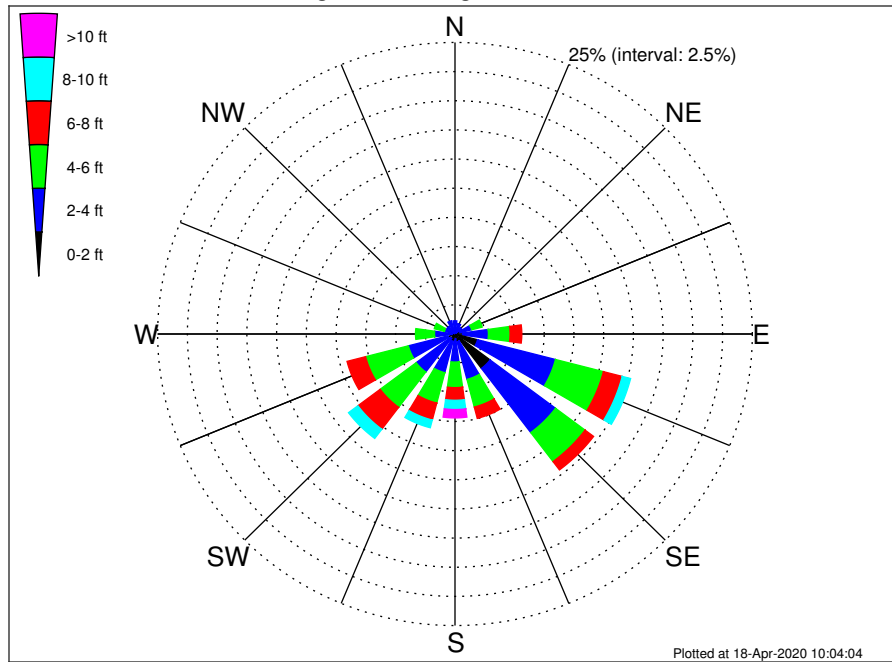
Swell: 65.61%



October Wind Speed PDF: 1979 - 2015



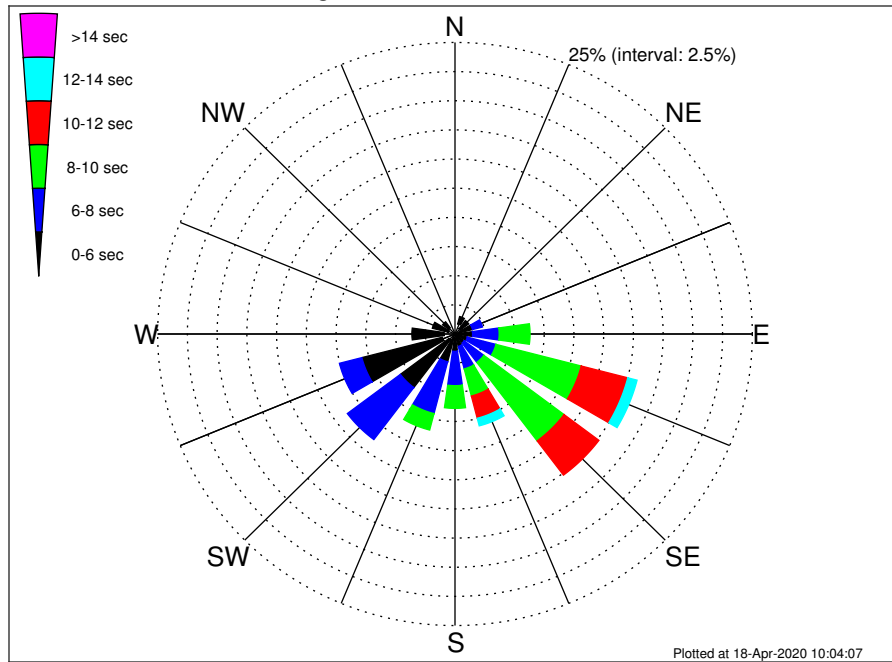
OCS A-0501 North Climatological WaveHeight Rose for October: 1979 - 2015



Joint Frequency Distribution Table

	N	NNE	NE	ENE	E	ESE	SE	SSE	S	SSW	SW	WSW	W	WNW	NW	NNW	Total
calm	•	•	•	0.06	0.10	0.29	0.49	0.04	0.06	0.02	0.02	0.01	•	•	0.02	•	1.12
1 - 2 ft	0.09	0.07	0.02	0.38	0.54	1.67	3.20	0.64	0.37	0.63	0.46	0.60	0.27	0.21	0.06	0.06	9.25
2 - 4 ft	1.04	0.86	0.68	1.01	2.17	6.77	6.89	3.33	1.98	2.78	3.60	3.44	1.45	0.71	0.75	1.12	38.59
4 - 6 ft	0.24	0.46	0.58	0.92	1.82	4.16	3.11	2.45	2.19	2.70	3.79	3.72	1.60	0.88	0.40	0.43	29.45
6 - 8 ft	0.07	0.07	0.10	0.20	0.98	1.63	0.90	1.01	1.09	1.50	2.35	1.61	0.39	0.17	0.08	0.11	12.25
8 - 10 ft	0.04	0.08	0.06	0.16	0.60	0.73	0.37	0.49	0.79	0.68	0.98	0.62	0.06	•	0.01	0.03	5.71
10 - 12 ft	0.01	0.02	•	0.02	0.24	0.32	0.25	0.18	0.43	0.35	0.40	0.04	•	•	0.01	•	2.27
12 - 14 ft	•	•	•	•	0.04	0.18	0.10	0.07	0.15	0.04	0.10	•	•	•	•	•	0.68
14 - 16 ft	•	•	•	•	0.03	0.06	0.03	•	0.07	0.12	0.09	•	•	•	•	•	0.40
16 - 18 ft	•	•	•	•	0.01	0.03	0.01	0.01	0.04	0.08	0.01	•	•	•	•	•	0.20
> 18 ft	•	•	•	•	•	0.01	0.01	0.01	0.03	•	•	•	•	•	•	•	0.07
Total	1.49	1.56	1.44	2.74	6.55	15.86	15.36	8.24	7.20	8.90	11.82	10.04	3.77	1.97	1.33	1.75	100.00

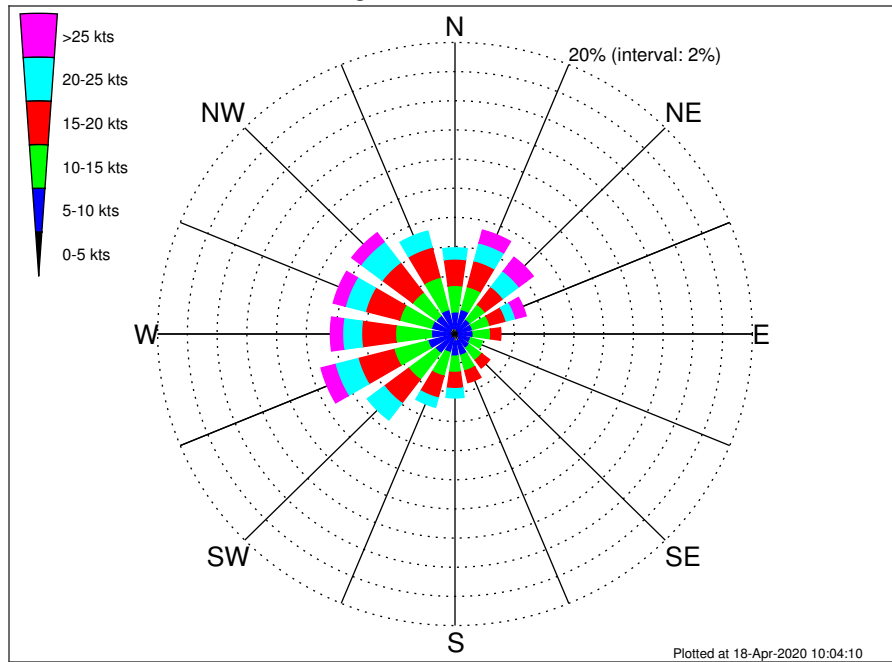
OCS A-0501 North Climatological WavePeriod Rose for October: 1979 - 2015



Joint Frequency Distribution Table

	N	NNE	NE	ENE	E	ESE	SE	SSE	S	SSW	SW	WSW	W	WNW	NW	NNW	Total
calm	•	•	•	•	•	•	•	•	•	•	•	•	•	•	•	•	•
1 - 2 sec	•	•	•	•	•	•	•	•	•	•	•	•	•	•	•	•	•
2 - 4 sec	1.12	0.91	0.56	0.44	0.28	0.22	0.28	0.24	0.38	0.29	0.63	1.10	0.92	0.57	0.66	1.16	9.75
4 - 6 sec	0.37	0.64	0.88	1.09	1.20	0.85	0.69	0.86	1.11	2.17	5.13	6.99	2.71	1.40	0.65	0.58	27.32
6 - 8 sec	•	0.01	•	0.86	2.24	2.48	2.07	1.99	2.94	4.59	5.58	1.95	0.15	•	0.02	•	24.89
8 - 10 sec	•	•	•	0.35	2.60	7.41	8.44	2.41	1.95	1.45	0.48	•	•	•	•	•	25.08
10 - 12 sec	•	•	•	0.01	0.24	4.04	3.67	1.97	0.47	0.35	•	•	•	•	•	•	10.74
12 - 14 sec	•	•	•	•	•	0.81	0.21	0.67	0.29	0.02	•	•	•	•	•	•	2.00
14 - 16 sec	•	•	•	•	•	0.04	•	0.10	0.06	0.02	•	•	•	•	•	•	0.22
18 - 20 sec	•	•	•	•	•	•	•	•	•	•	•	•	•	•	•	•	•
22 - 24 sec	•	•	•	•	•	•	•	•	•	•	•	•	•	•	•	•	•
Total	1.49	1.56	1.44	2.74	6.55	15.86	15.36	8.24	7.20	8.90	11.82	10.04	3.77	1.97	1.33	1.75	100.00

OCS A-0501 North Climatological Wind Rose for October: 1979 - 2015



Joint Frequency Distribution Table

	N	NNE	NE	ENE	E	ESE	SE	SSE	S	SSW	SW	WSW	W	WNW	NW	NNW	Total
calm	0.01	•	0.01	•	0.01	0.02	0.01	0.03	0.02	0.04	0.01	0.03	0.01	0.01	0.02	0.02	0.28
0 - 5 kts	0.37	0.37	0.27	0.27	0.28	0.22	0.38	0.48	0.47	0.27	0.41	0.27	0.30	0.34	0.37	0.41	5.48
5 - 10 kts	1.14	1.37	0.97	0.95	0.94	0.84	0.81	1.00	1.03	1.00	1.22	1.58	1.28	1.29	1.19	1.29	17.87
10 - 15 kts	1.81	1.62	1.28	1.20	1.18	0.82	1.05	1.10	1.12	1.68	2.26	2.36	2.42	2.22	1.99	2.29	26.39
15 - 20 kts	1.81	1.84	1.52	1.13	0.68	0.45	0.67	0.84	1.11	1.54	2.05	2.50	2.28	2.37	2.56	2.14	25.49
20 - 25 kts	0.76	1.26	1.34	0.67	0.41	0.40	0.27	0.45	0.64	0.66	1.43	1.60	1.28	1.40	1.79	1.14	15.51
25 - 30 kts	0.24	0.40	0.57	0.40	0.15	0.09	0.10	0.16	0.20	0.24	0.31	0.72	0.49	0.59	0.68	0.31	5.65
30 - 35 kts	0.08	0.31	0.47	0.25	0.12	0.03	0.06	0.04	0.04	0.02	0.10	0.16	0.26	0.25	0.09	0.07	2.35
35 - 40 kts	0.04	0.12	0.15	0.03	0.02	0.03	0.03	0.03	0.02	0.01	0.03	0.10	0.07	•	•	0.01	0.72
40 - 45 kts	0.03	0.04	0.01	0.02	0.03	0.02	•	0.01	•	0.01	•	•	•	•	•	0.02	0.21
45 - 50 kts	•	0.02	•	0.02	•	•	•	•	•	•	•	•	•	•	•	•	0.04
Total	6.30	7.36	6.59	4.95	3.83	2.93	3.38	4.14	4.66	5.47	7.83	9.31	8.38	8.46	8.70	7.71	100.00