

## OCS A-0501 North - September

### Weather Days

Wave Height > 5.0 ft Mean: 7.2 days Range: 4.7 - 9.6 days p50: 7 days p90: 12 days

Wave Height > 6.0 ft Mean: 4.0 days Range: 2.2 - 5.8 days p50: 4 days p90: 8 days

Wave Height > 7.0 ft Mean: 2.3 days Range: 1.0 - 3.6 days p50: 2 days p90: 4 days

### Working Window Probability

Wave Height < 5.0 ft 3 days or longer: 61%

5 days or longer: 21%

7 days or longer: 11%

Wave Height < 6.0 ft 3 days or longer: 73%

5 days or longer: 40%

7 days or longer: 26%

Wave Height < 7.0 ft 3 days or longer: 80%

5 days or longer: 52%

7 days or longer: 42%

### Waves

Mean Height: 2 - 4 ft

The wave heights will occasionally reach 10 - 12 ft, but rarely higher.

Mean Period: 6 - 8 sec

The wave periods will occasionally reach 14 - 16 sec, but rarely longer.

Principle Direction, from: SE

WindSea/Swell: 23% / 77%

### Winds

Mean Speed: 10 - 15 kts

The winds will occasionally reach 30 - 35 kts, but rarely greater.

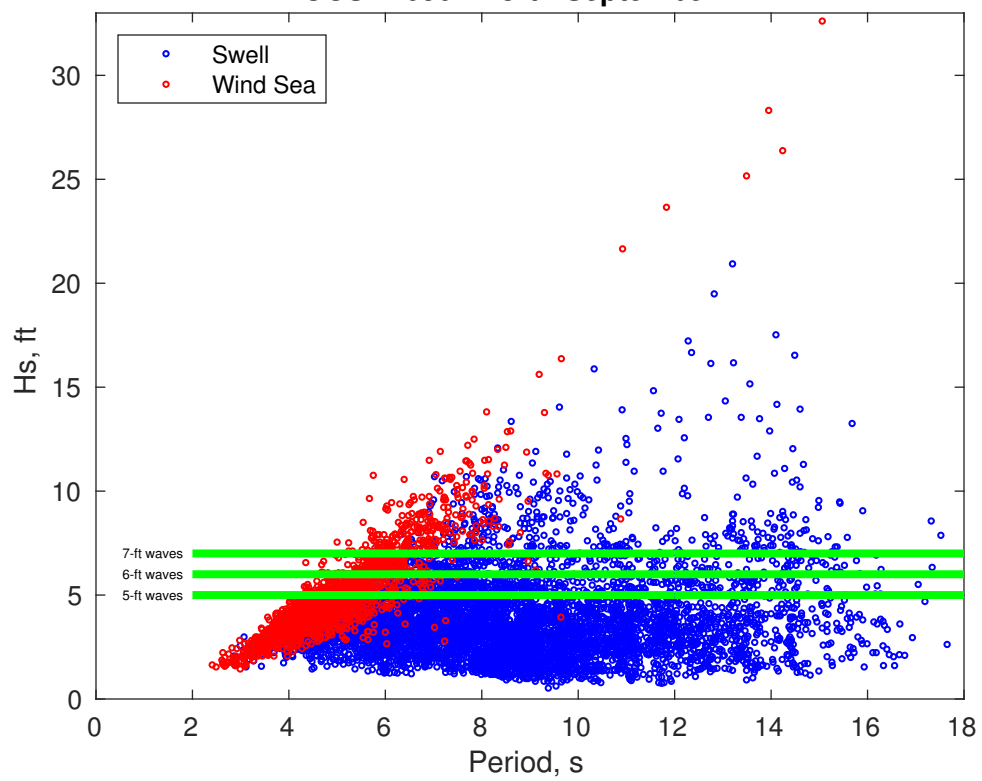
Principle Direction, from: SW

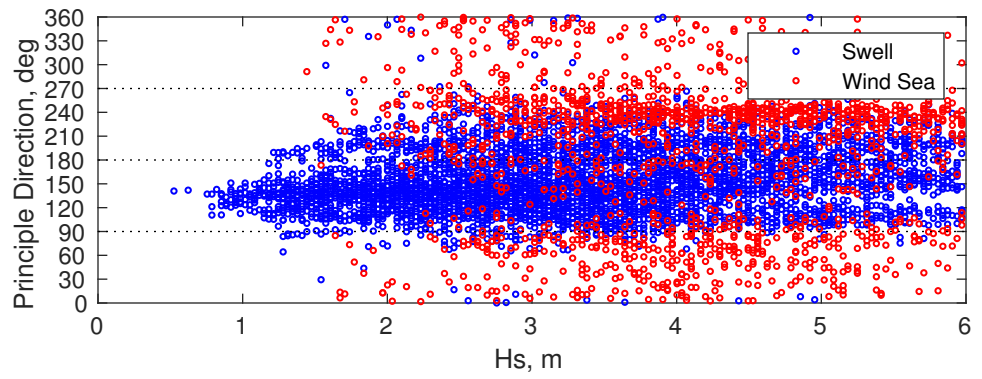
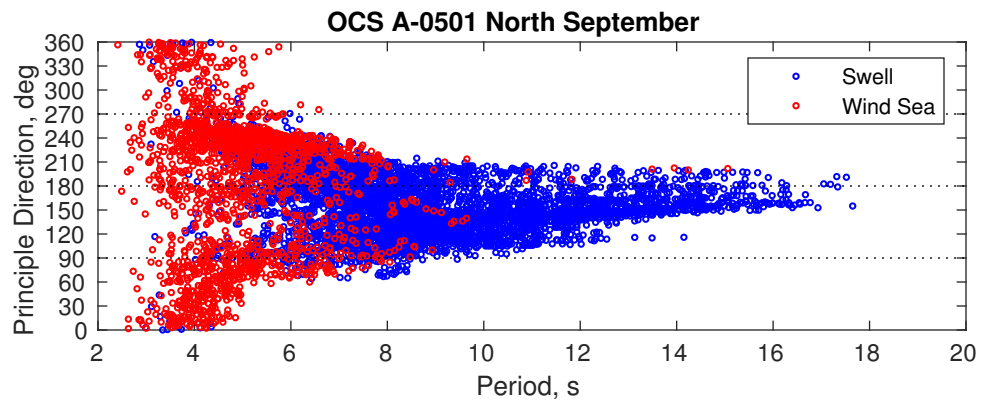
### Severe Storms

There is a 14 % chance of a storm with winds peaking above 34 kts.

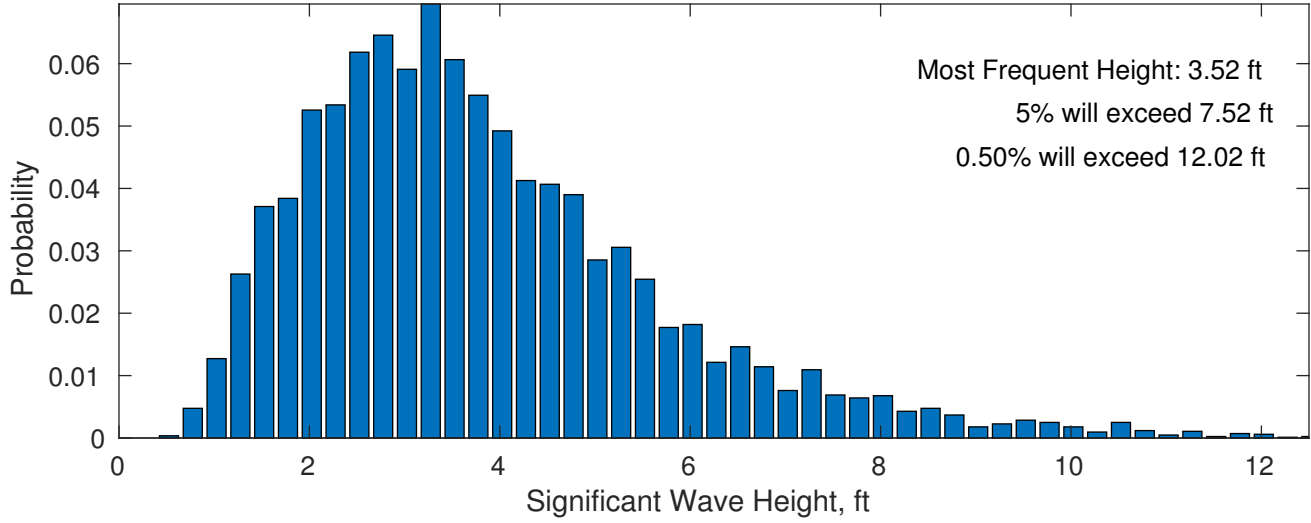
There is a 17 % chance of a storm with waves peaking at 4m (13 ft) or greater.

### OCS A-0501 North September

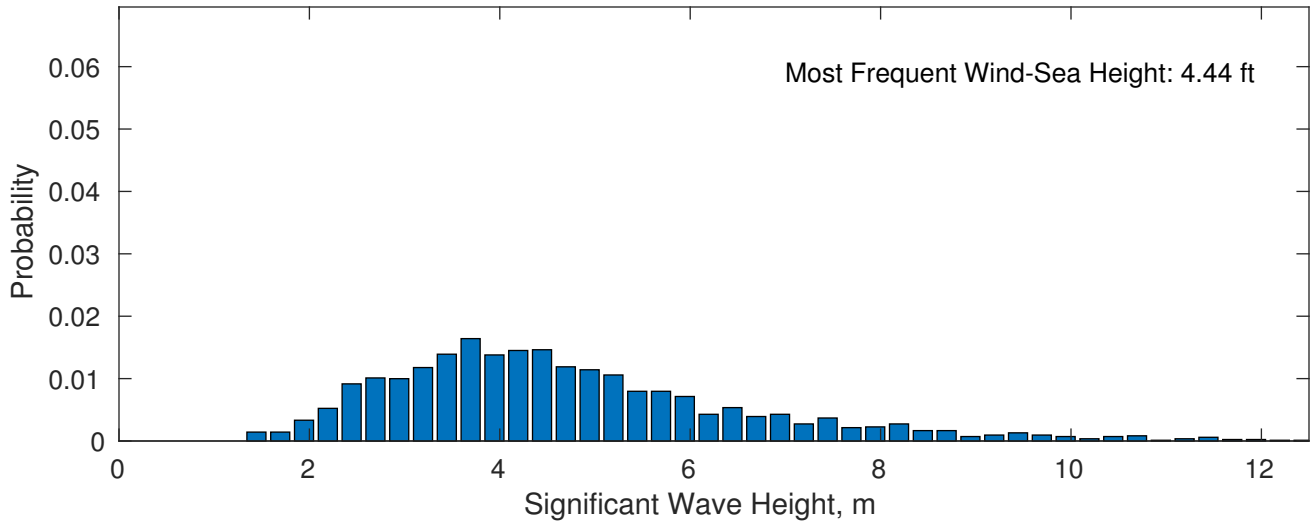




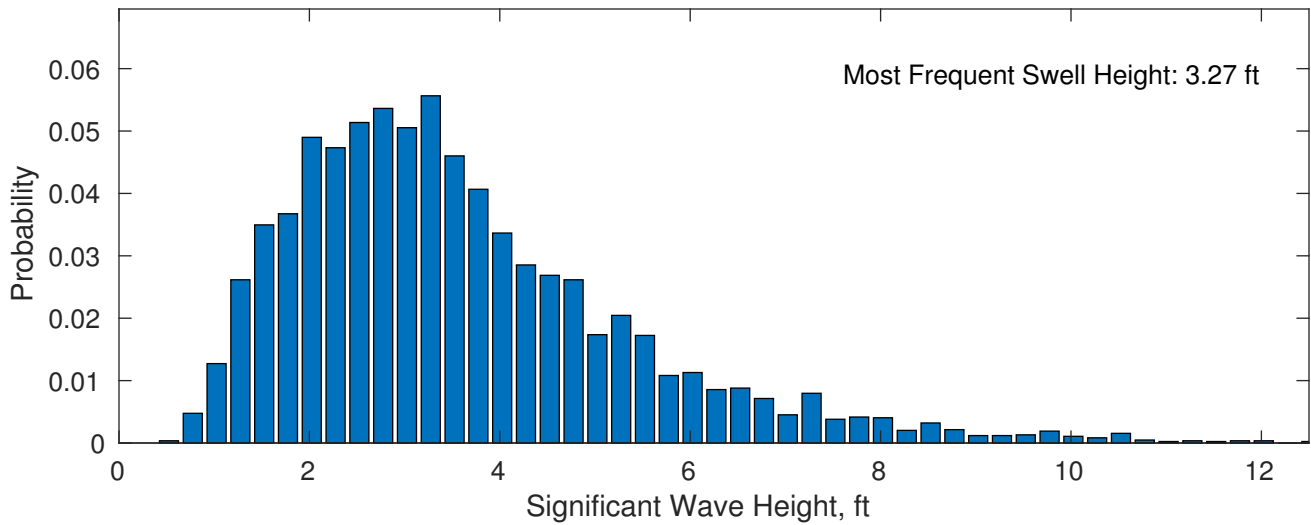
### September Wave Height PDF: 1979 - 2015



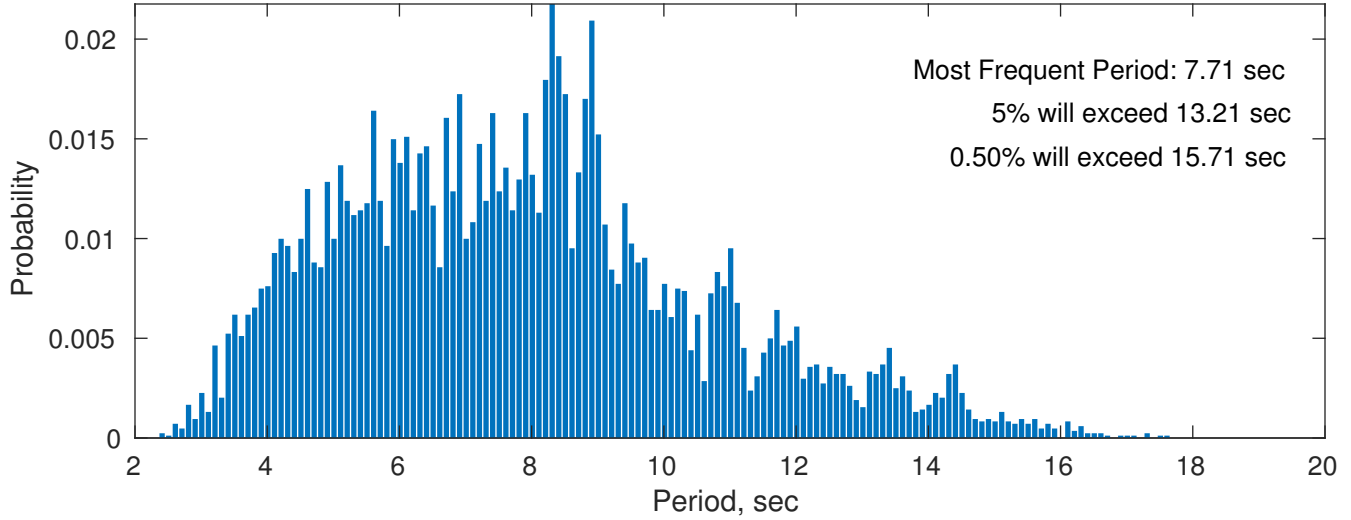
### Wind-Sea: 22.71%



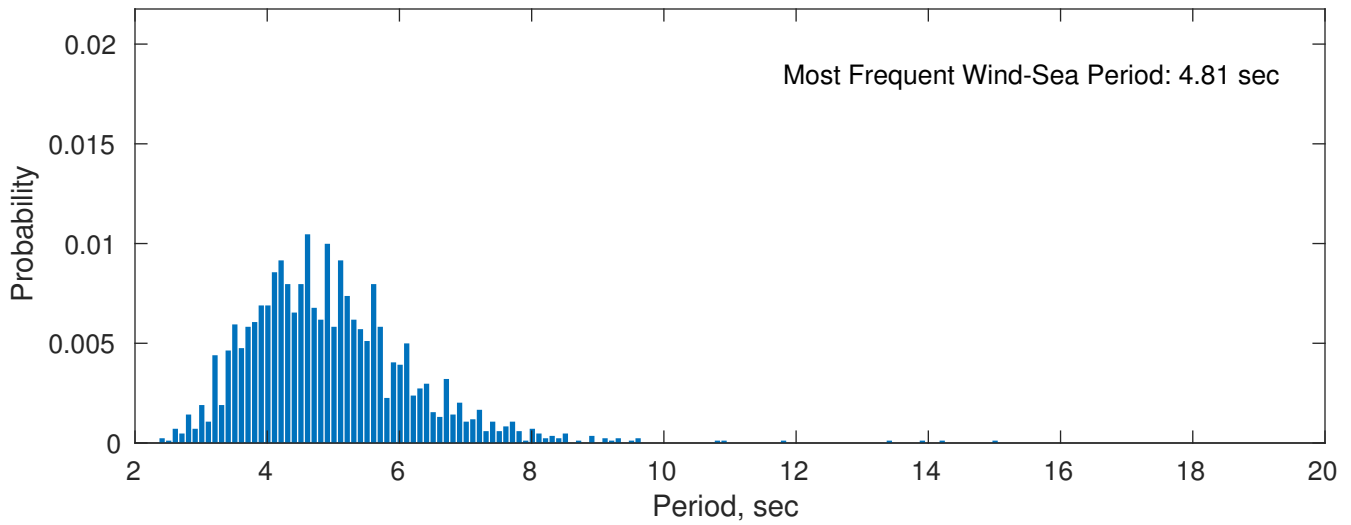
### Swell: 77.29%



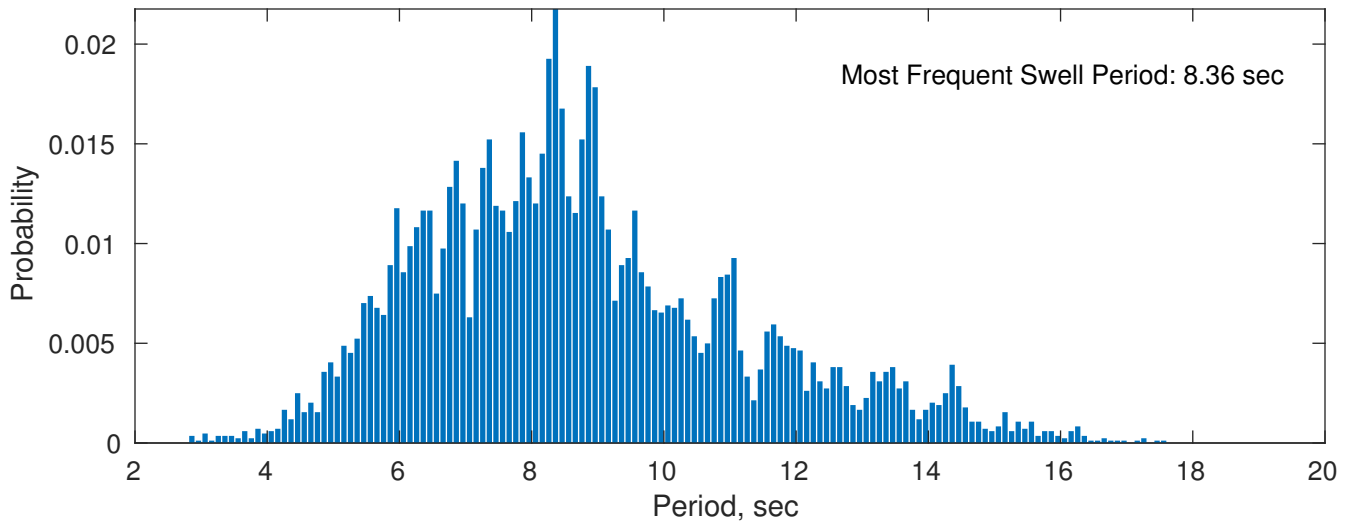
**September Peak Wave Period PDF: 1979 - 2015**



**Wind-Sea: 22.71%**

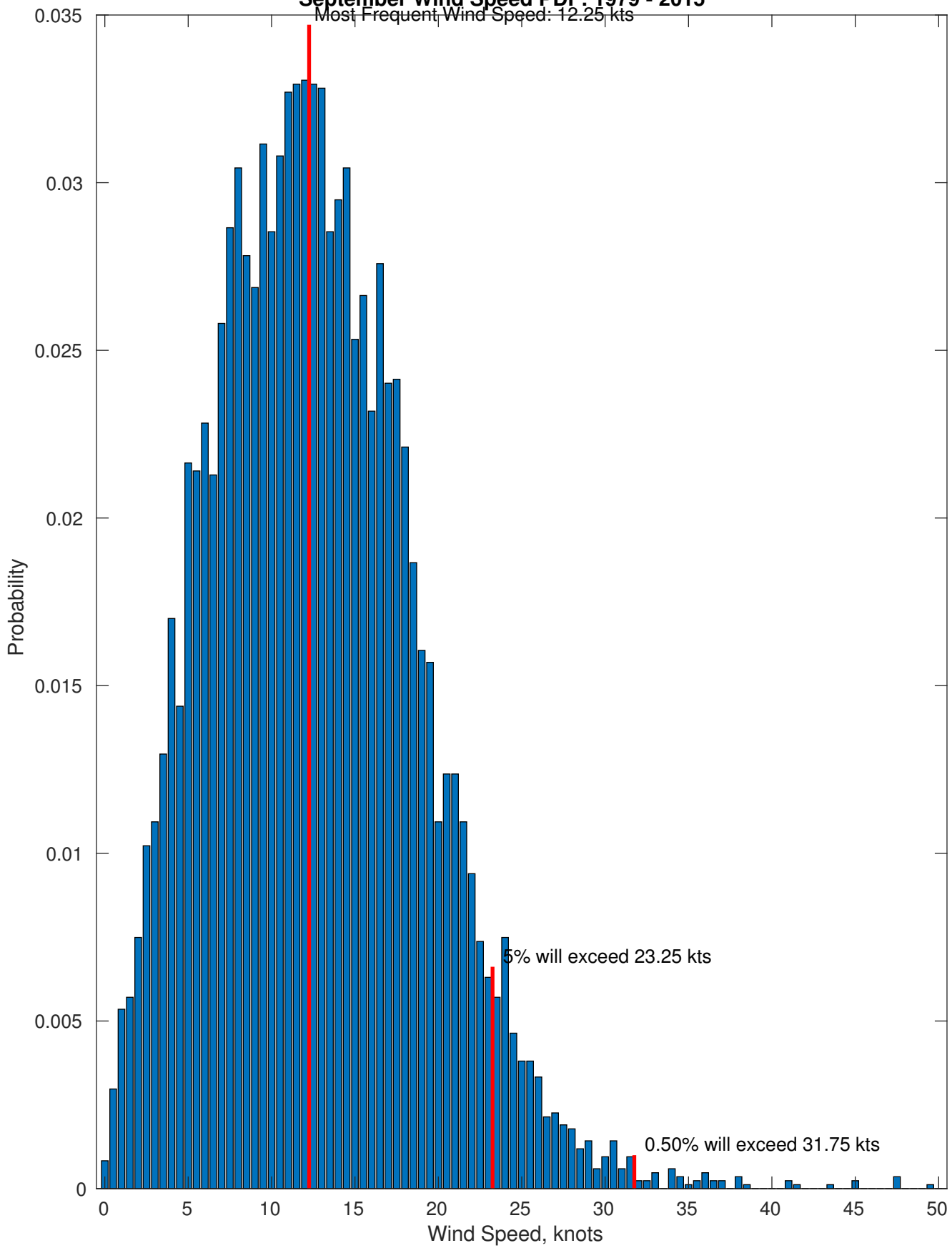


**Swell: 77.29%**

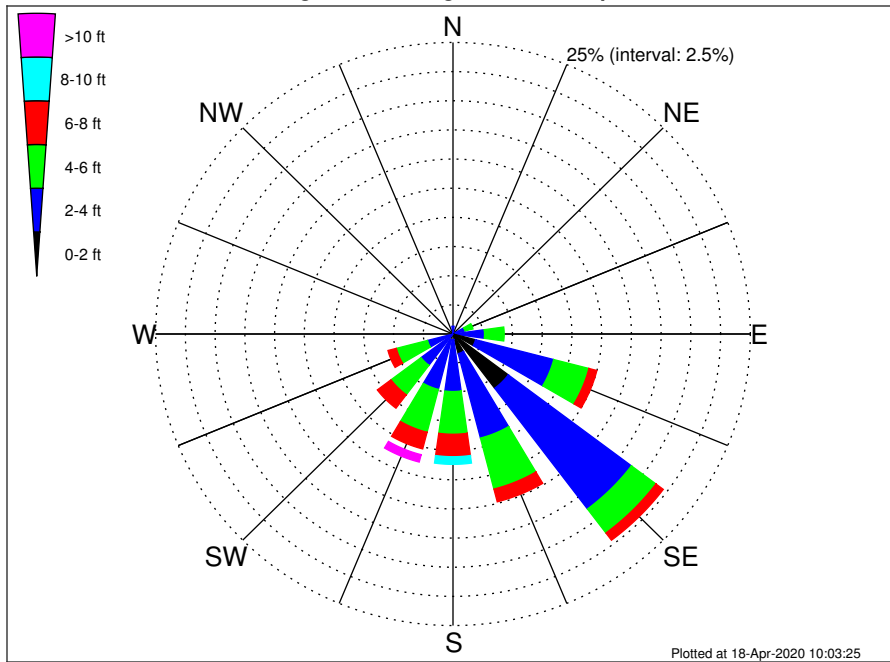


### September Wind Speed PDF: 1979 - 2015

Most Frequent Wind Speed: 12.25 kts



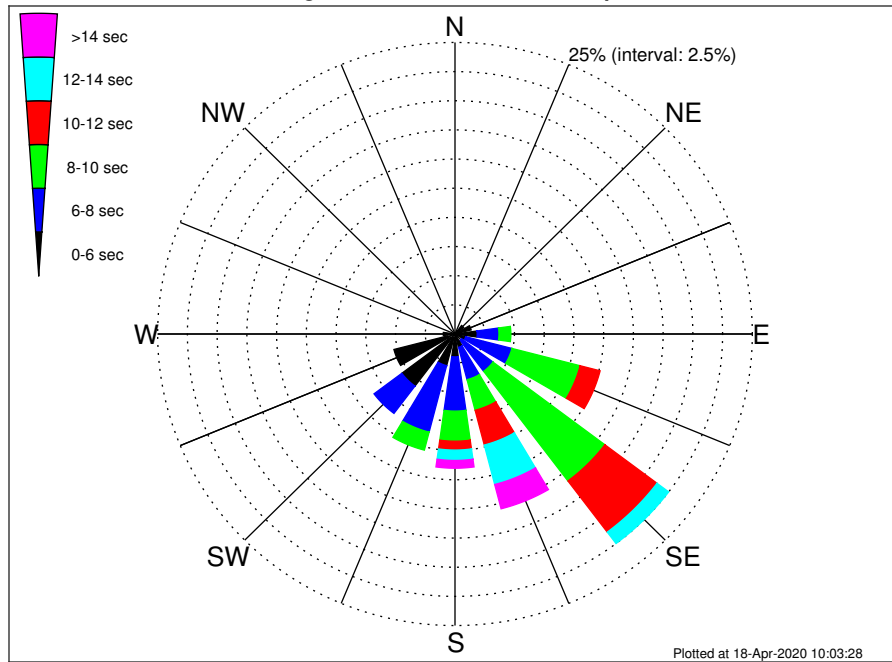
OCS A-0501 North Climatological WaveHeight Rose for September: 1979 - 2015



Joint Frequency Distribution Table

	N	NNE	NE	ENE	E	ESE	SE	SSE	S	SSW	SW	WSW	W	WNW	NW	NNW	Total
calm	•	•	•	•	•	0.10	0.32	0.01	•	•	•	•	•	•	•	•	0.43
1 - 2 ft	0.04	0.06	0.04	0.06	0.27	1.87	5.51	1.72	0.48	0.50	0.18	0.04	0.02	0.02	•	0.07	10.87
2 - 4 ft	0.63	0.38	0.33	0.99	2.38	6.79	12.96	7.48	4.46	4.41	3.19	2.18	0.62	0.30	0.17	0.39	47.65
4 - 6 ft	0.29	0.36	0.55	0.69	1.65	3.06	2.58	4.52	3.66	3.79	3.16	2.71	0.21	0.17	0.11	0.19	27.69
6 - 8 ft	0.01	0.06	•	0.20	0.25	0.69	0.77	1.13	1.93	1.47	1.44	0.73	0.14	0.02	0.02	0.07	8.94
8 - 10 ft	•	•	•	0.07	0.17	0.25	0.21	0.45	0.65	0.51	0.49	0.12	0.01	•	•	0.01	2.95
10 - 12 ft	0.01	•	•	0.02	0.04	0.02	0.14	0.07	0.21	0.33	0.07	•	•	•	•	•	0.93
12 - 14 ft	•	•	•	•	•	•	•	0.07	0.06	0.14	0.01	•	•	•	•	•	0.29
14 - 16 ft	•	•	•	•	•	•	•	•	0.04	0.05	•	•	•	•	•	•	0.08
16 - 18 ft	•	•	•	•	•	•	•	0.02	0.01	0.05	•	•	•	•	•	•	0.08
> 18 ft	•	•	•	•	•	•	•	•	0.01	0.08	•	•	•	•	•	•	0.10
Total	0.98	0.86	0.92	2.03	4.76	12.77	22.50	15.48	11.51	11.34	8.54	5.77	1.01	0.51	0.30	0.74	100.00

OCS A-0501 North Climatological WavePeriod Rose for September: 1979 - 2015

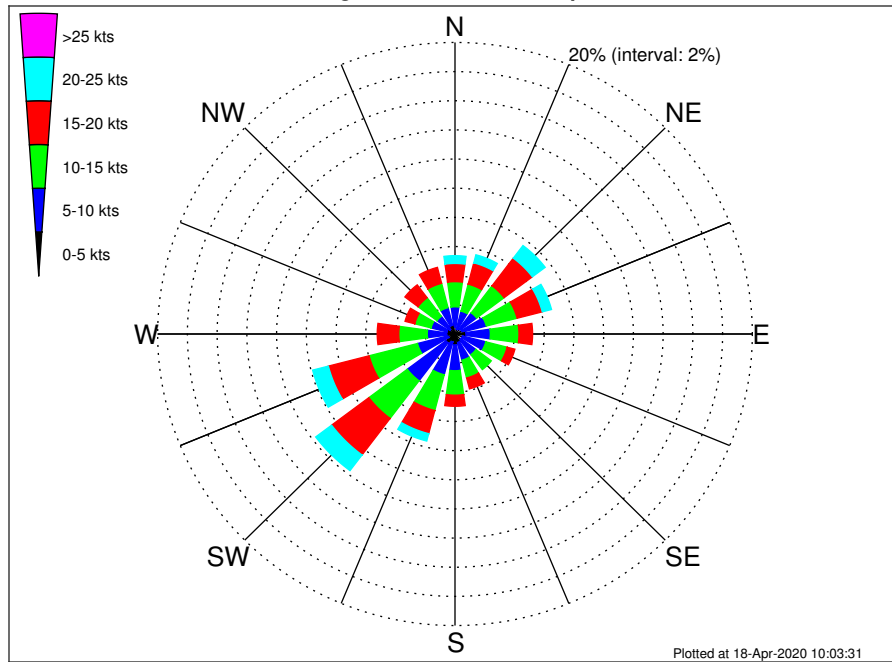


Joint Frequency Distribution Table

	N	NNE	NE	ENE	E	ESE	SE	SSE	S	SSW	SW	WSW	W	WNW	NW	NNW	Total
calm	•	•	•	•	•	•	•	•	•	•	•	•	•	•	•	•	•
1 - 2 sec	•	•	•	•	•	•	•	•	•	•	•	•	•	•	•	•	•
2 - 4 sec	0.71	0.43	0.29	0.34	0.20	0.11	0.07	0.15	0.32	0.32	0.43	0.62	0.23	0.19	0.13	0.46	5.01
4 - 6 sec	0.26	0.43	0.63	1.06	1.66	0.82	0.62	1.02	1.64	2.49	5.17	4.68	0.76	0.31	0.17	0.27	22.00
6 - 8 sec	•	•	•	0.52	1.83	4.02	3.32	2.87	4.65	5.89	2.93	0.46	0.02	0.01	•	•	26.52
8 - 10 sec	•	•	•	0.11	1.00	5.92	11.77	2.71	2.58	1.59	0.01	•	•	•	•	•	25.70
10 - 12 sec	•	•	•	•	0.06	1.74	5.49	3.08	0.76	0.58	•	•	•	•	•	•	11.71
12 - 14 sec	•	•	•	•	•	0.15	1.22	3.50	0.89	0.24	•	•	•	•	•	•	6.00
14 - 16 sec	•	•	•	•	•	0.01	•	1.95	0.54	0.23	•	•	•	•	•	•	2.72
18 - 20 sec	•	•	•	•	•	•	•	0.20	0.13	0.01	•	•	•	•	•	•	0.34
22 - 24 sec	•	•	•	•	•	•	•	•	•	•	•	•	•	•	•	•	•
Total	0.98	0.86	0.92	2.03	4.76	12.77	22.50	15.48	11.51	11.34	8.54	5.77	1.01	0.51	0.30	0.74	100.00



OCS A-0501 North Climatological Wind Rose for September: 1979 - 2015



Joint Frequency Distribution Table

	N	NNE	NE	ENE	E	ESE	SE	SSE	S	SSW	SW	WSW	W	WNW	NW	NNW	Total
calm	0.04	•	0.01	0.02	0.04	0.02	0.01	0.04	0.05	0.05	0.02	0.04	0.04	0.01	•	•	0.38
0 - 5 kts	0.44	0.33	0.42	0.48	0.70	0.50	0.49	0.57	0.70	0.51	0.74	0.43	0.52	0.55	0.42	0.62	8.41
5 - 10 kts	1.39	1.28	1.39	1.68	1.64	1.62	1.27	1.25	1.77	2.33	3.26	2.14	1.31	1.11	1.11	1.25	25.79
10 - 15 kts	1.72	1.91	2.32	2.14	1.93	1.49	1.28	1.26	1.68	2.53	3.23	3.37	1.91	1.13	1.59	1.72	31.22
15 - 20 kts	1.25	1.51	2.38	1.75	0.92	0.54	0.50	0.77	0.76	1.64	3.14	2.83	1.45	0.68	1.11	1.13	22.34
20 - 25 kts	0.54	0.57	1.08	0.64	0.45	0.12	0.14	0.30	0.33	0.52	1.34	1.09	0.38	0.36	0.46	0.42	8.75
25 - 30 kts	0.17	0.26	0.21	0.19	0.10	0.10	0.07	0.04	0.10	0.14	0.18	0.23	0.06	0.11	0.15	0.13	2.22
30 - 35 kts	0.01	0.04	0.15	0.02	0.01	0.02	0.02	0.04	0.02	0.06	0.02	0.04	•	0.02	0.02	0.07	0.58
35 - 40 kts	•	0.02	0.01	0.01	•	•	0.01	0.02	0.02	•	0.01	•	0.02	•	0.02	0.01	0.18
40 - 45 kts	0.01	•	0.01	•	•	•	•	•	0.01	•	0.01	•	•	•	•	•	0.05
45 - 50 kts	0.01	0.02	•	•	•	•	•	•	0.01	0.02	•	•	•	•	•	•	0.07
Total	5.58	5.96	7.99	6.93	5.78	4.40	3.80	4.28	5.46	7.81	11.96	10.15	5.70	3.96	4.89	5.35	100.00