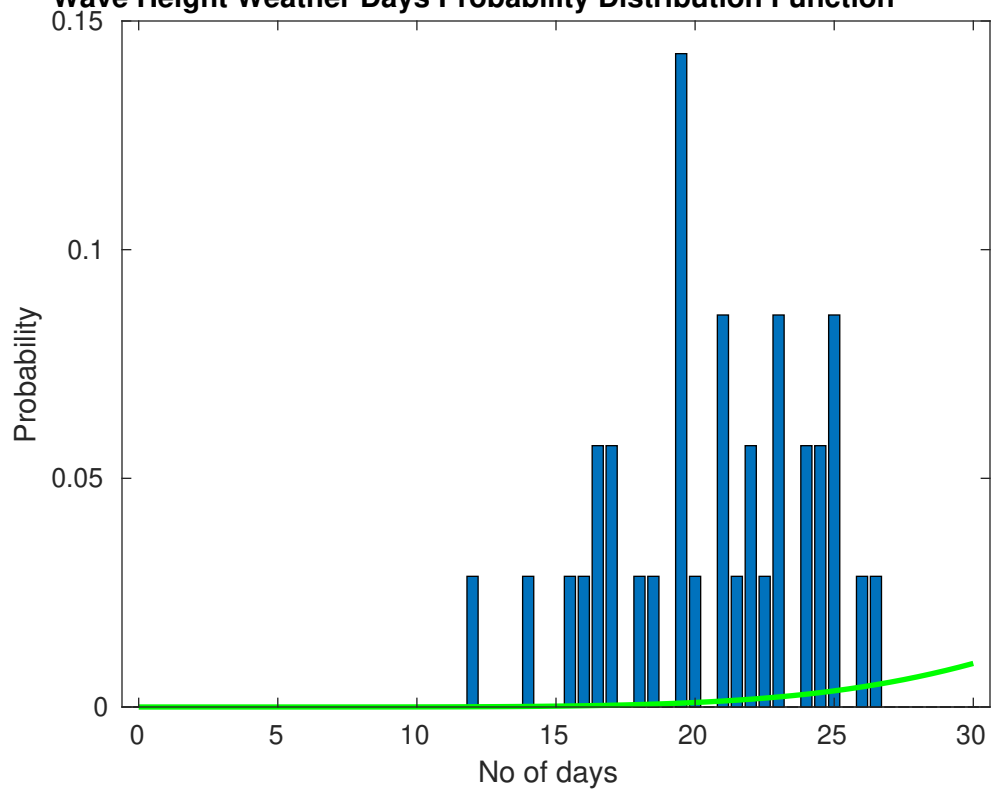
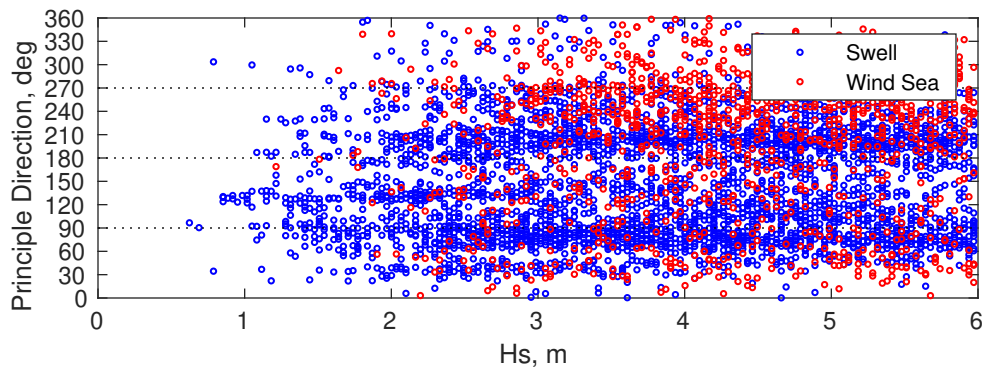
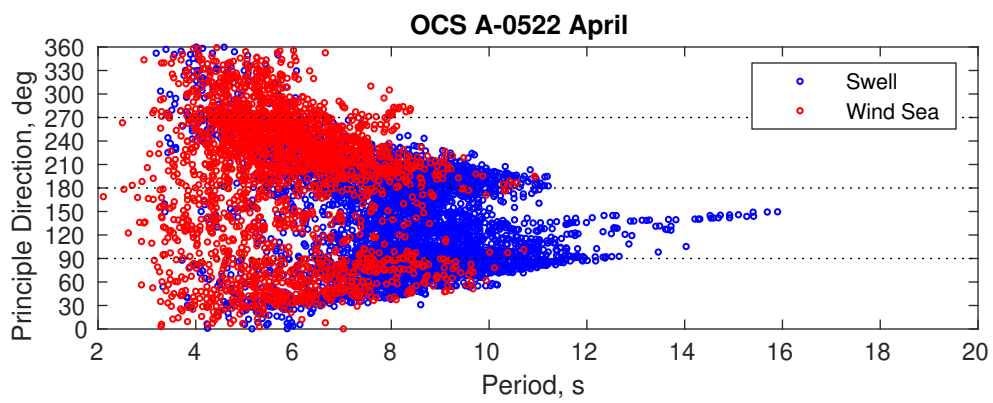
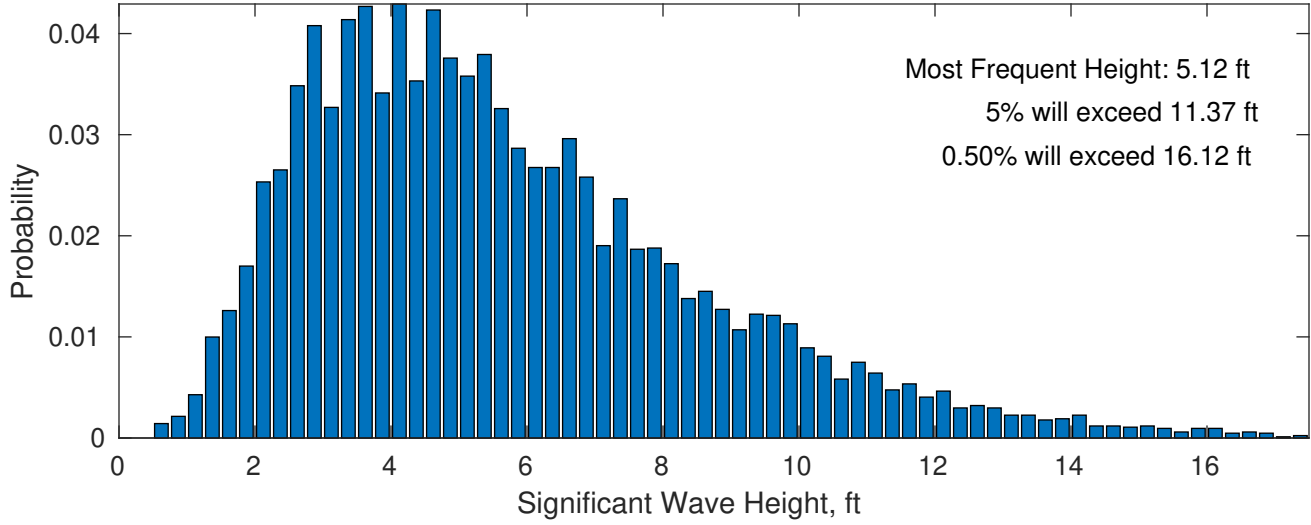


Wave Height Weather Days Probability Distribution Function

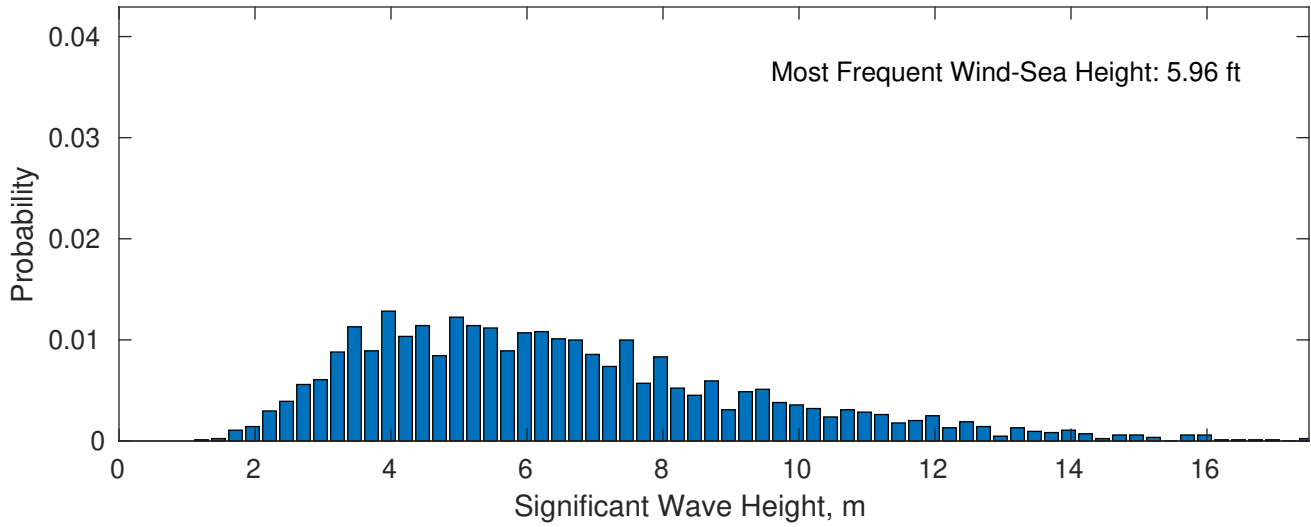




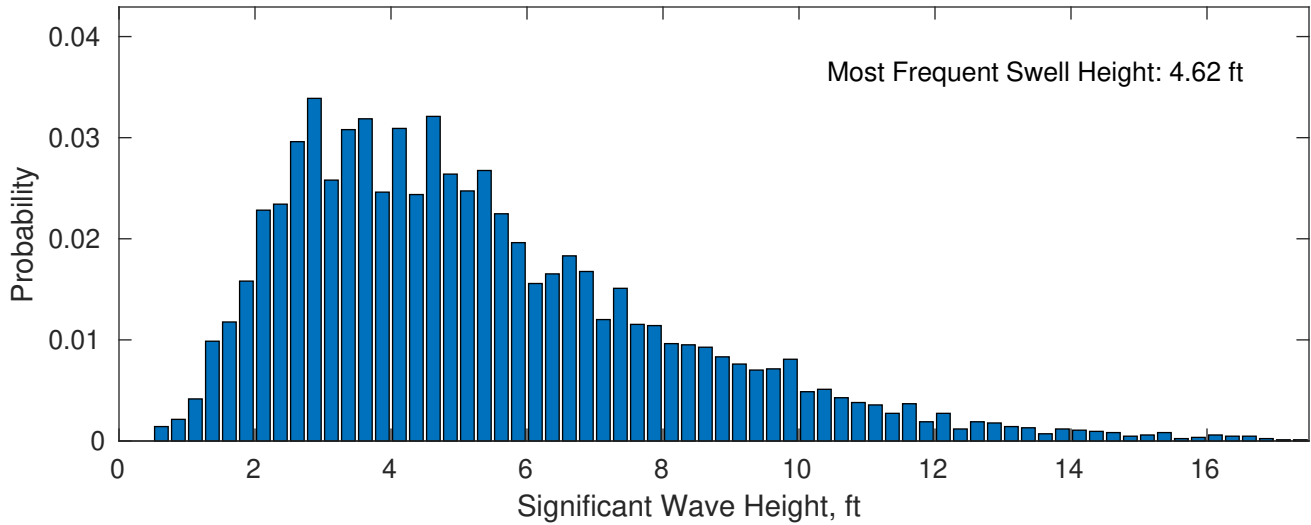
April Wave Height PDF: 1979 - 2015



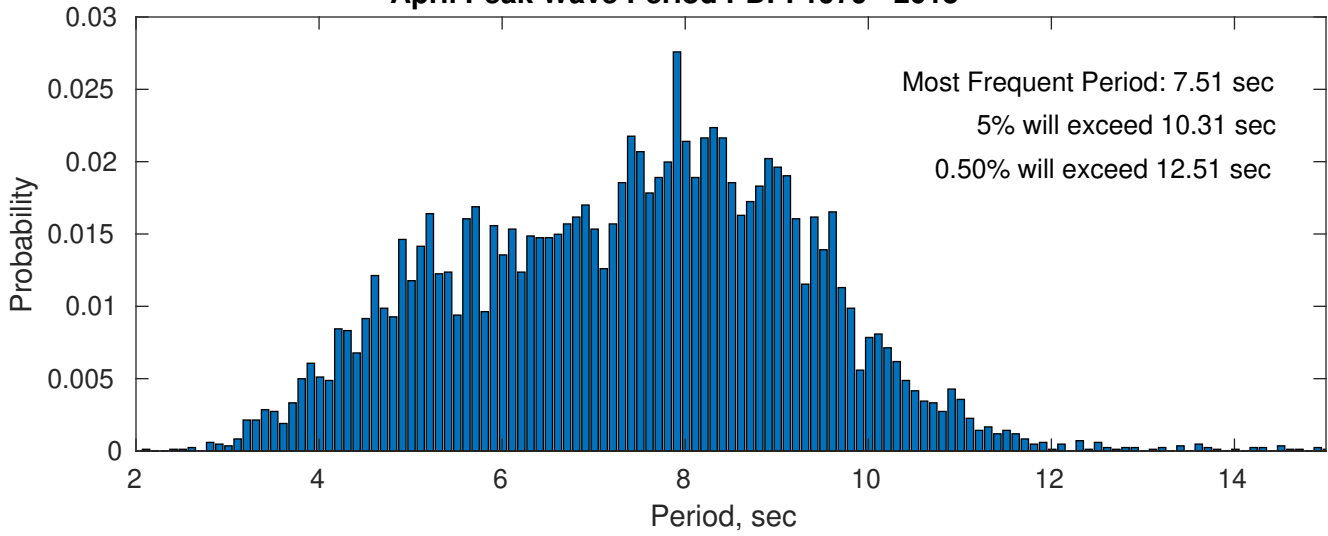
Wind-Sea: 29.01%



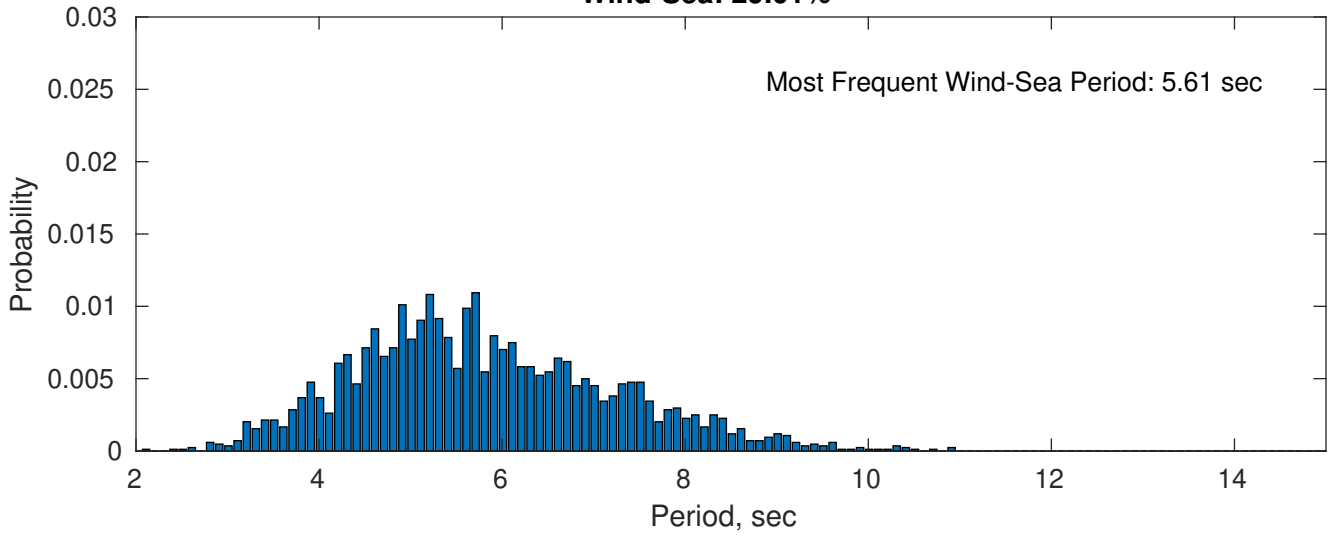
Swell: 70.99%



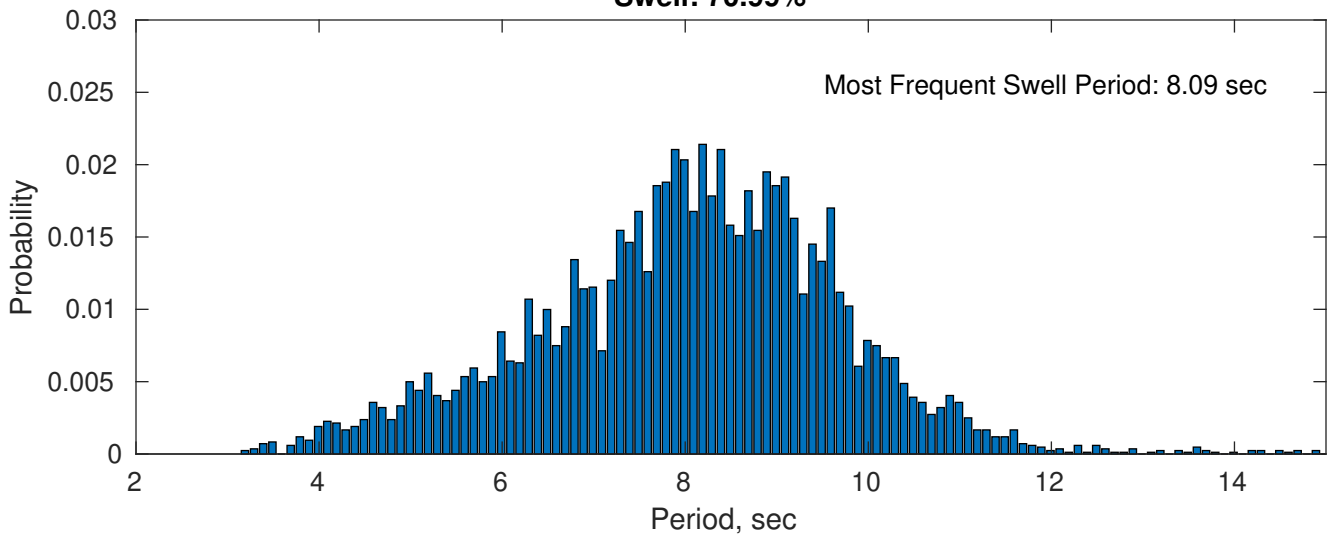
April Peak Wave Period PDF: 1979 - 2015



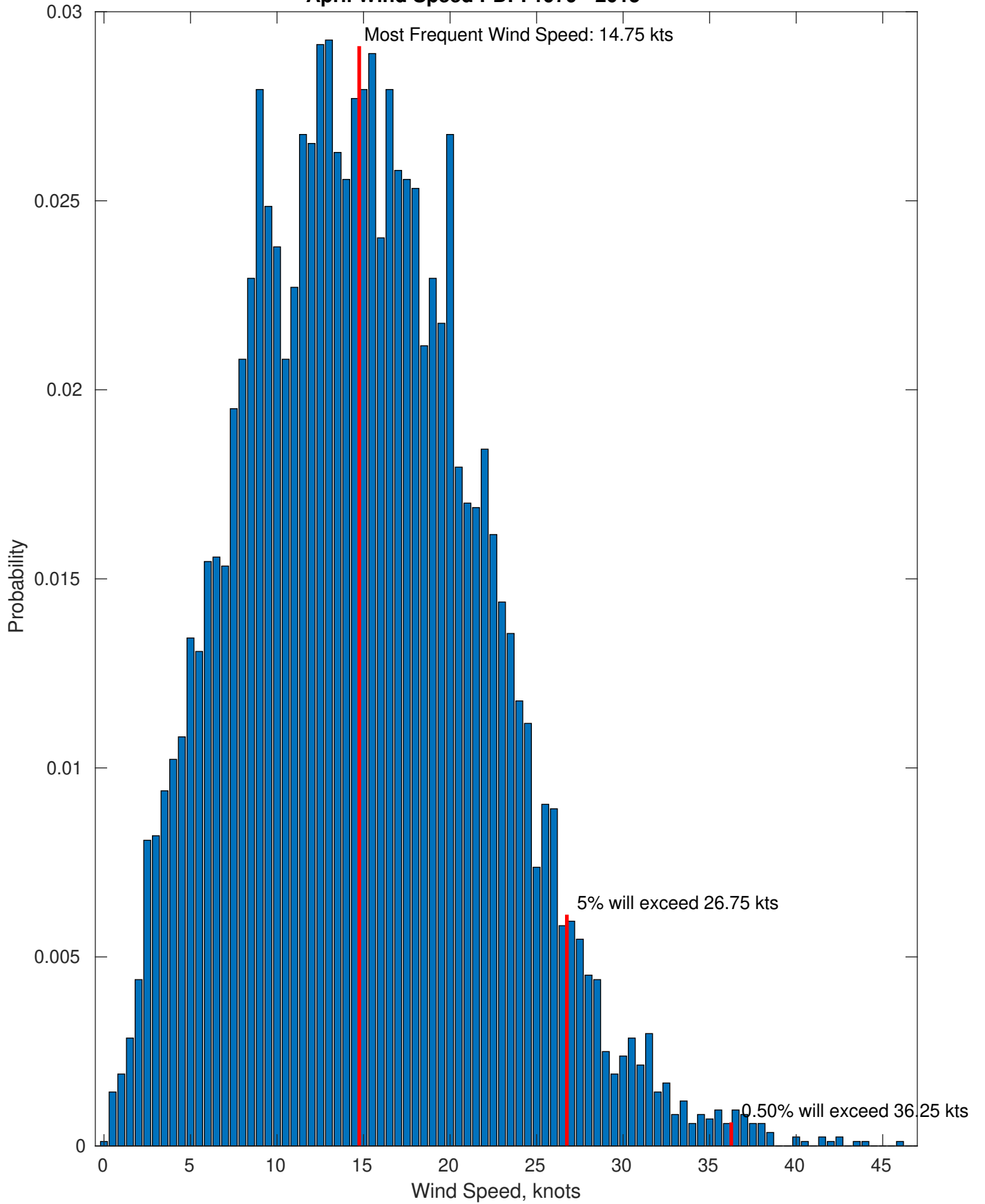
Wind-Sea: 29.01%



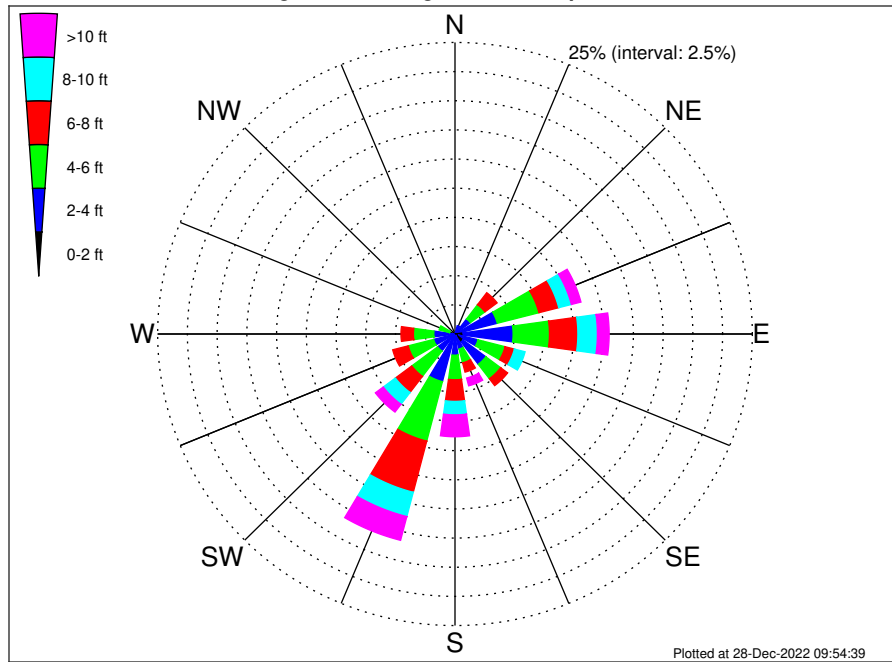
Swell: 70.99%



April Wind Speed PDF: 1979 - 2015



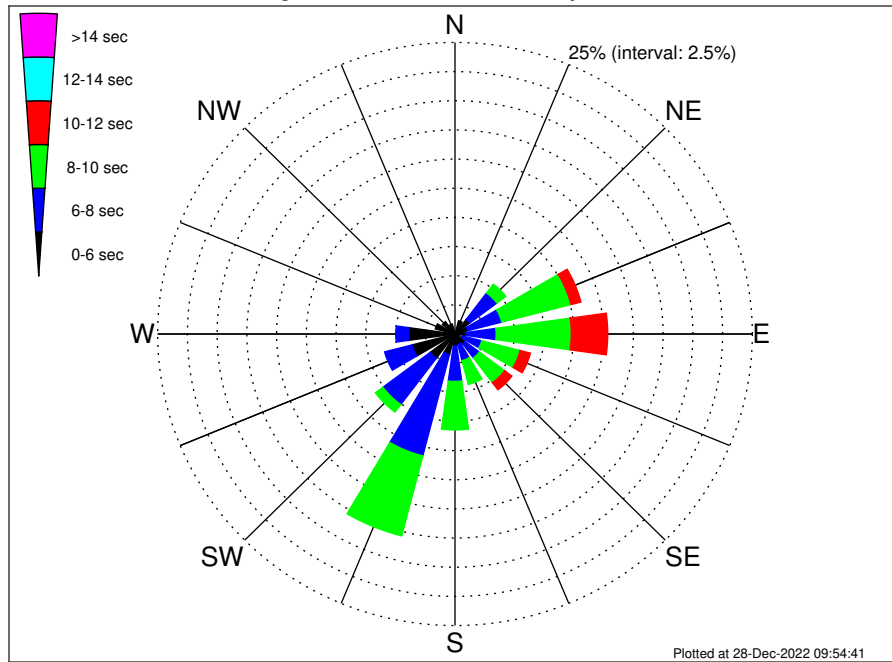
OCS A-0522 Climatological WaveHeight Rose for April: 1979 - 2015



Joint Frequency Distribution Table

	N	NNE	NE	ENE	E	ESE	SE	SSE	S	SSW	SW	WSW	W	WNW	NW	NNW	Total
calm	•	•	0.01	•	0.02	0.01	0.14	•	•	•	•	•	•	0.01	•	•	0.20
1 - 2 ft	0.02	0.10	0.14	0.33	0.67	0.30	0.70	0.14	0.34	0.27	0.13	0.08	0.15	0.06	0.01	0.01	3.47
2 - 4 ft	0.29	0.64	1.46	3.34	4.20	1.69	2.40	1.19	1.47	3.95	1.70	1.77	1.63	0.40	0.37	0.37	26.87
4 - 6 ft	0.11	0.39	1.53	3.61	3.06	2.35	1.56	1.22	2.10	5.27	2.72	2.21	1.71	0.90	0.59	0.30	29.66
6 - 8 ft	0.11	0.27	1.28	1.72	2.39	0.81	0.74	0.82	1.85	4.53	1.72	1.34	1.05	0.42	0.33	0.20	19.60
8 - 10 ft	0.02	0.06	0.46	1.09	1.64	0.93	0.59	0.52	1.15	2.15	1.27	0.56	0.24	0.06	0.06	0.05	10.87
10 - 12 ft	0.02	0.01	0.26	0.55	0.61	0.49	0.19	0.40	0.87	1.17	0.56	0.14	0.11	0.06	0.01	0.01	5.46
12 - 14 ft	0.01	•	0.15	0.15	0.30	0.05	0.05	0.19	0.48	0.57	0.21	0.06	0.12	•	•	•	2.34
14 - 16 ft	•	•	•	0.08	0.07	•	0.02	0.06	0.32	0.21	0.06	•	0.05	0.07	0.02	•	0.98
16 - 18 ft	•	•	0.06	0.05	0.01	•	0.02	0.04	0.13	0.10	•	•	•	•	•	•	0.40
> 18 ft	•	•	•	•	•	•	0.01	•	0.08	0.06	•	•	•	•	•	•	0.15
Total	0.58	1.47	5.37	10.94	12.96	6.62	6.43	4.59	8.81	18.28	8.38	6.17	5.05	1.99	1.40	0.94	100.00

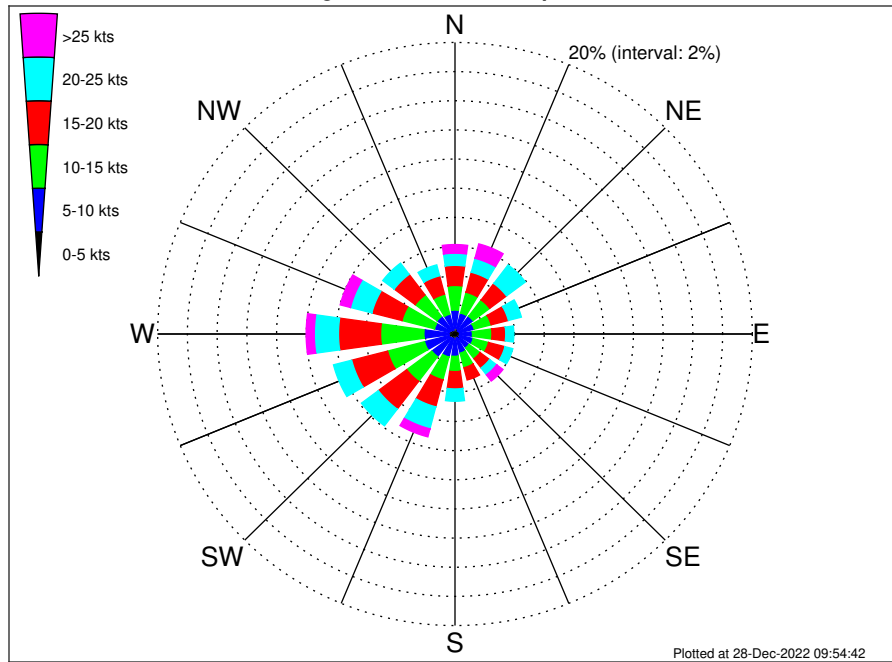
OCS A-0522 Climatological WavePeriod Rose for April: 1979 - 2015



Joint Frequency Distribution Table

	N	NNE	NE	ENE	E	ESE	SE	SSE	S	SSW	SW	WSW	W	WNW	NW	NNW	Total
calm	•	•	•	•	•	•	•	•	•	•	•	•	•	•	•	•	•
1 - 2 sec	•	•	•	•	•	•	•	•	•	•	•	•	•	•	•	•	•
2 - 4 sec	0.13	0.15	0.18	0.14	0.17	0.13	0.30	0.21	0.14	0.15	0.23	0.15	0.30	0.17	0.12	0.15	2.83
4 - 6 sec	0.40	1.02	1.38	0.98	0.74	0.51	0.77	0.73	0.89	1.68	2.39	3.58	3.64	1.55	1.21	0.74	22.20
6 - 8 sec	0.05	0.29	2.85	2.95	2.56	1.69	1.50	1.41	3.03	8.97	4.97	2.38	1.05	0.21	0.07	0.05	34.02
8 - 10 sec	•	0.01	0.94	6.00	6.31	3.33	2.66	2.12	4.16	7.09	0.80	0.06	0.07	0.06	•	•	33.61
10 - 12 sec	•	•	0.02	0.87	3.07	0.89	0.76	0.08	0.58	0.39	•	•	•	•	•	•	6.67
12 - 14 sec	•	•	•	•	0.12	0.06	0.26	•	•	•	•	•	•	•	•	•	0.44
14 - 16 sec	•	•	•	•	•	0.01	0.18	0.04	•	•	•	•	•	•	•	•	0.23
18 - 20 sec	•	•	•	•	•	•	•	•	•	•	•	•	•	•	•	•	•
22 - 24 sec	•	•	•	•	•	•	•	•	•	•	•	•	•	•	•	•	•
Total	0.58	1.47	5.37	10.94	12.96	6.62	6.43	4.59	8.81	18.28	8.38	6.17	5.05	1.99	1.40	0.94	100.00

OCS A-0522 Climatological Wind Rose for April: 1979 - 2015



Joint Frequency Distribution Table

	N	NNE	NE	ENE	E	ESE	SE	SSE	S	SSW	SW	WSW	W	WNW	NW	NNW	Total
calm	0.01	0.01	0.01	0.01	0.02	•	•	•	0.01	0.05	•	0.01	0.01	•	•	•	0.15
0 - 5 kts	0.40	0.37	0.27	0.30	0.33	0.31	0.39	0.30	0.42	0.27	0.37	0.42	0.40	0.42	0.34	0.27	5.59
5 - 10 kts	1.22	1.11	1.24	1.02	0.82	0.96	0.80	1.06	1.11	1.31	1.58	1.69	1.68	1.01	1.17	1.13	18.89
10 - 15 kts	1.69	1.47	1.40	1.18	1.31	1.06	0.93	1.03	1.05	1.62	2.12	2.57	2.91	2.26	1.84	1.41	25.85
15 - 20 kts	1.38	1.41	1.41	1.20	0.93	1.14	0.80	0.87	1.19	1.91	2.39	2.50	2.83	2.09	1.77	1.31	25.14
20 - 25 kts	0.83	0.99	1.59	0.90	0.55	0.55	0.59	0.46	0.84	1.56	1.43	1.26	1.63	1.49	0.96	0.77	16.41
25 - 30 kts	0.38	0.65	0.34	0.29	0.11	0.34	0.33	0.31	0.40	0.46	0.33	0.23	0.39	0.48	0.26	0.27	5.59
30 - 35 kts	0.13	0.23	0.13	0.11	0.04	0.08	0.17	0.10	0.08	0.10	0.05	0.05	0.10	0.14	0.11	0.10	1.69
35 - 40 kts	0.04	0.11	0.02	0.02	•	0.02	0.02	0.02	0.01	0.01	•	•	0.06	0.10	0.11	0.01	0.56
40 - 45 kts	0.05	0.04	•	0.01	•	•	•	•	•	•	•	•	•	•	0.02	•	0.12
45 - 50 kts	•	•	•	•	•	•	0.01	•	•	•	•	•	•	•	•	•	0.01
Total	6.14	6.39	6.43	5.04	4.10	4.47	4.04	4.15	5.11	7.29	8.26	8.72	10.01	7.98	6.59	5.28	100.00