

OCS A-0522 - December

Latitude: 40.67 N Longitude: 70.26 W

Weather Days

Wave Height > 4.0 ft Mean: 21.5 days Range: 19.5 - 23.5 days p50:22.5 days p75:20 days p90:19.5 days
Wave Height > 5.0 ft Mean: 17.5 days Range: 15.2 - 19.7 days p50:18.5 days p75:16.5 days p90:15.5 days
Wave Height > 6.0 ft Mean: 13.6 days Range: 11.2 - 16.0 days p50:14.5 days p75:13 days p90:11 days

Wind Speed > 20.0 knots Mean: 11.8 days Range: 9.3 - 14.3 days p50:12 days p75:10 days p90:8.5 days
Wind Speed > 25.0 knots Mean: 5.9 days Range: 3.9 - 7.9 days p50:6.5 days p75:5 days p90:3.5 days
Wind Speed > 30.0 knots Mean: 2.5 days Range: 1.1 - 3.9 days p50:2.5 days p75:1.5 days p90:1 days

Working Window Probability

Wave Height < 4.0 ft	3 days or longer: 8%
	5 days or longer: 0%
	7 days or longer: 0%
Wave Height < 5.0 ft	3 days or longer: 15%
	5 days or longer: 1%
	7 days or longer: 0%
Wave Height < 6.0 ft	3 days or longer: 27%
	5 days or longer: 2%
	7 days or longer: 0%

Waves

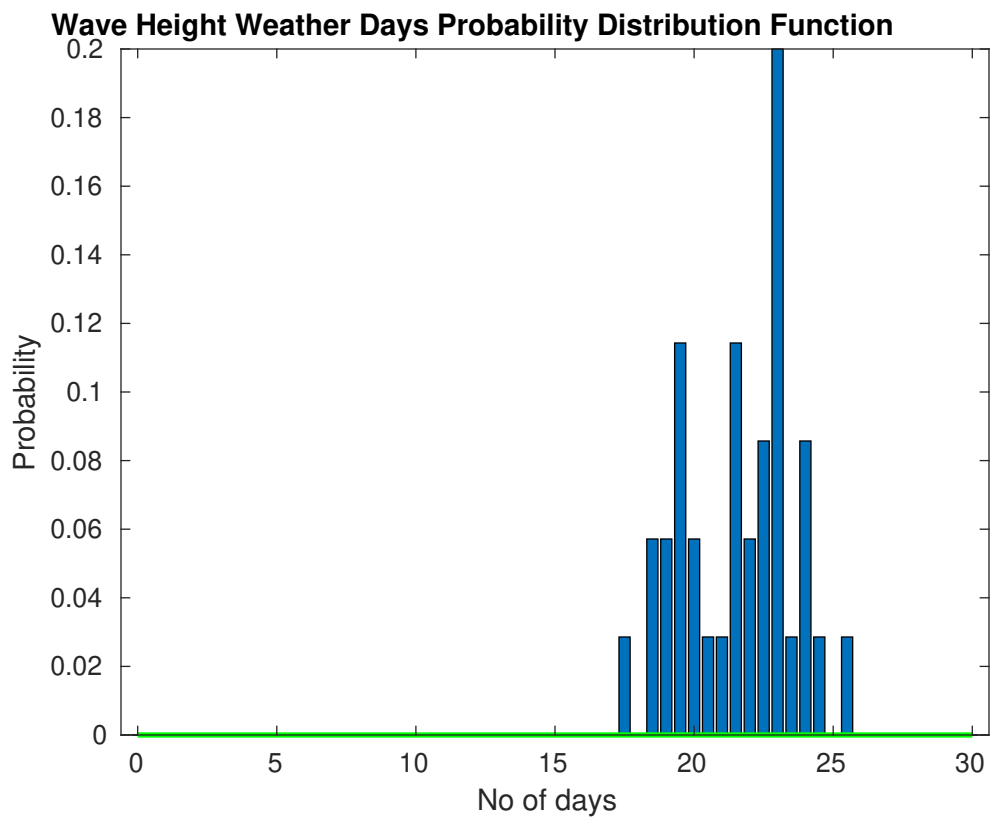
Mean Height: 4 - 6 ft
The wave heights will occasionally reach 14 - 16 ft, but rarely higher.
Mean Period: 6 - 8 sec
The wave periods will occasionally reach 12 - 14 sec, but rarely longer.
Principle Direction, from: WSW
WindSea/Swell: 43% / 57%

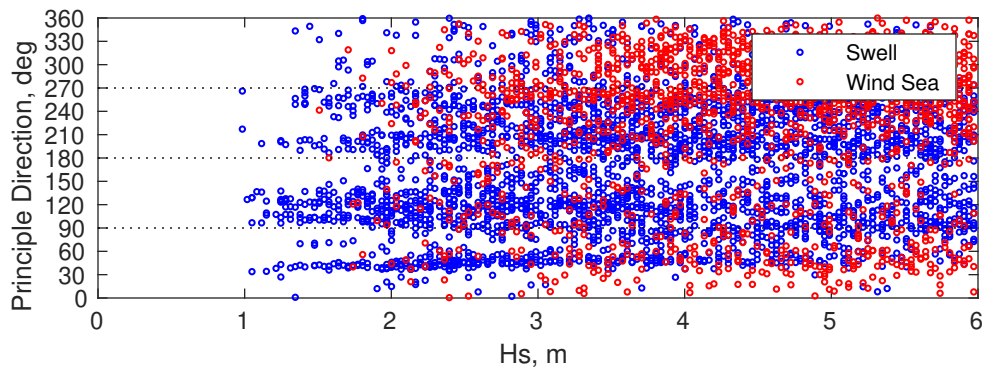
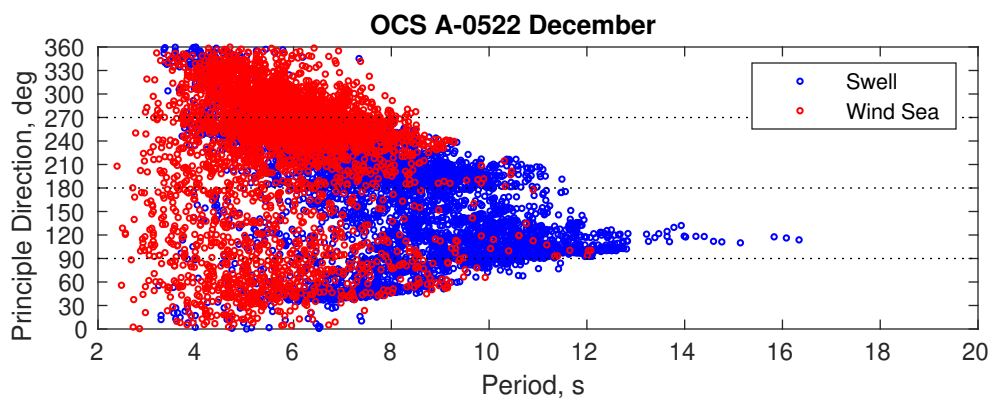
Winds

Mean Speed: 15 - 20 kts
The winds will occasionally reach 40 - 45 kts, but rarely greater.
Principle Direction, from: NW

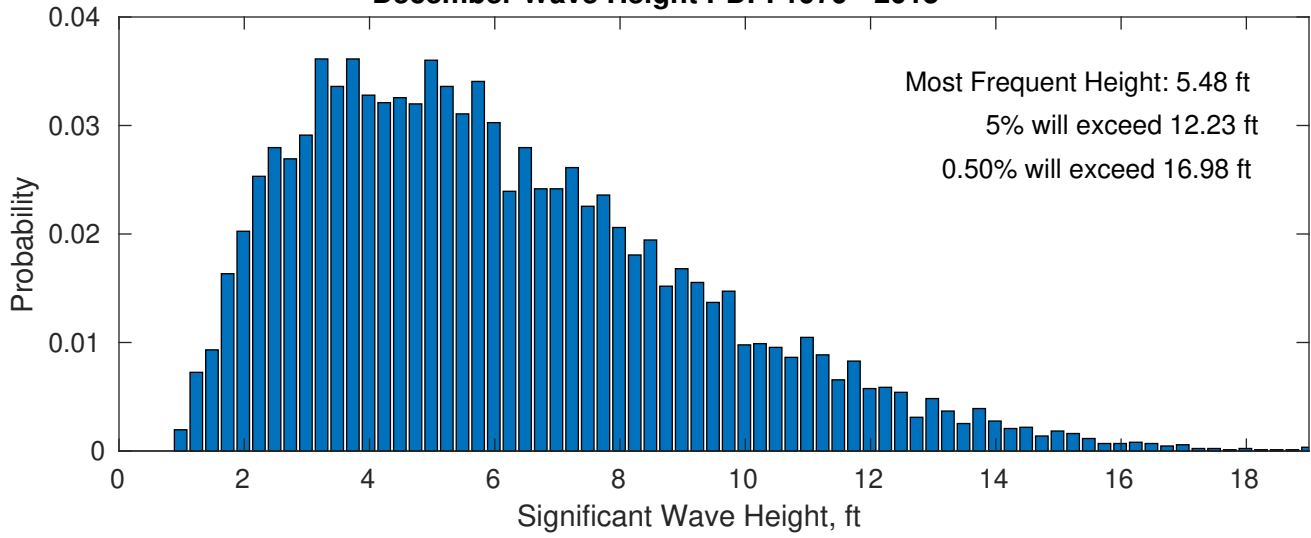
Severe Storms

There is a 132 % chance of a storm occurring in the month with winds peaking above 34 kts.
There is a 132 % chance of a storm occurring in the month with waves peaking at 4m (13 ft) or greater.

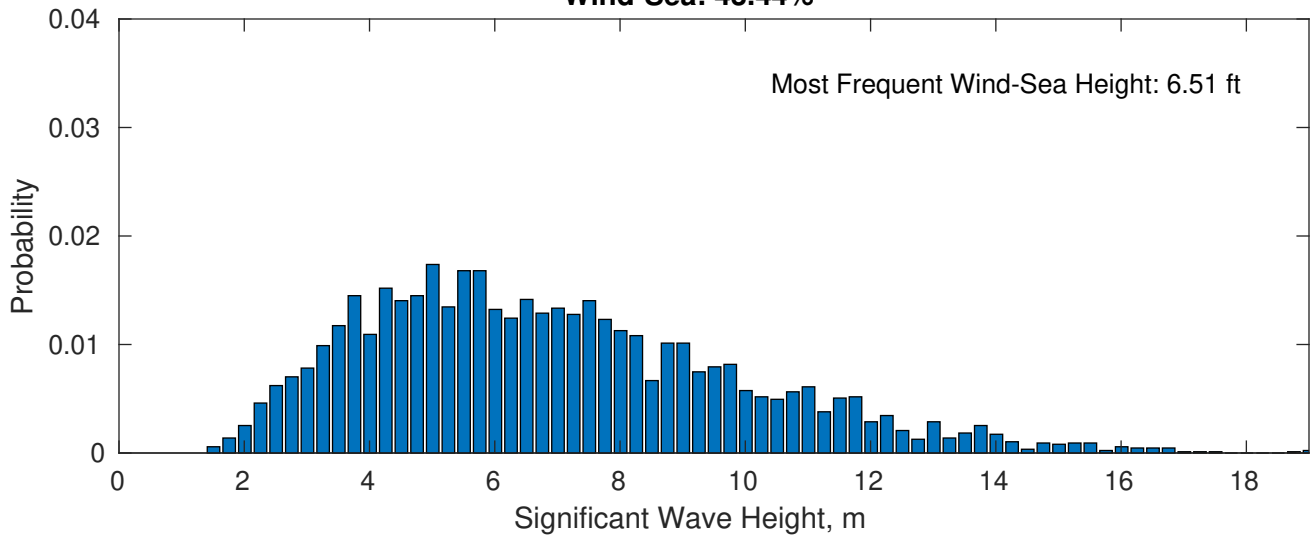




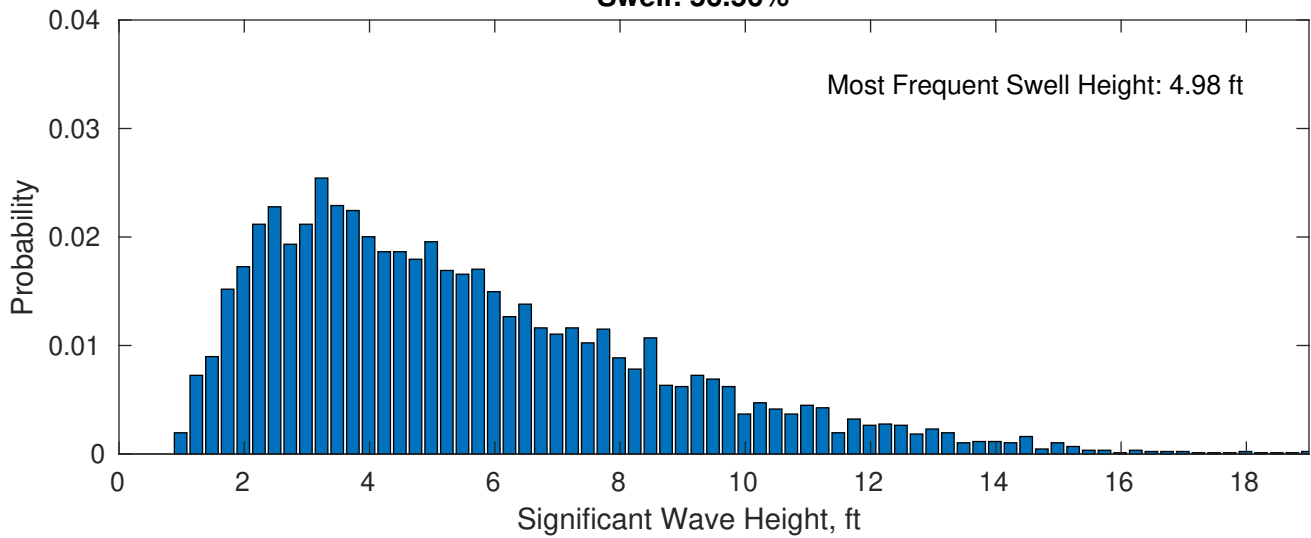
December Wave Height PDF: 1979 - 2015



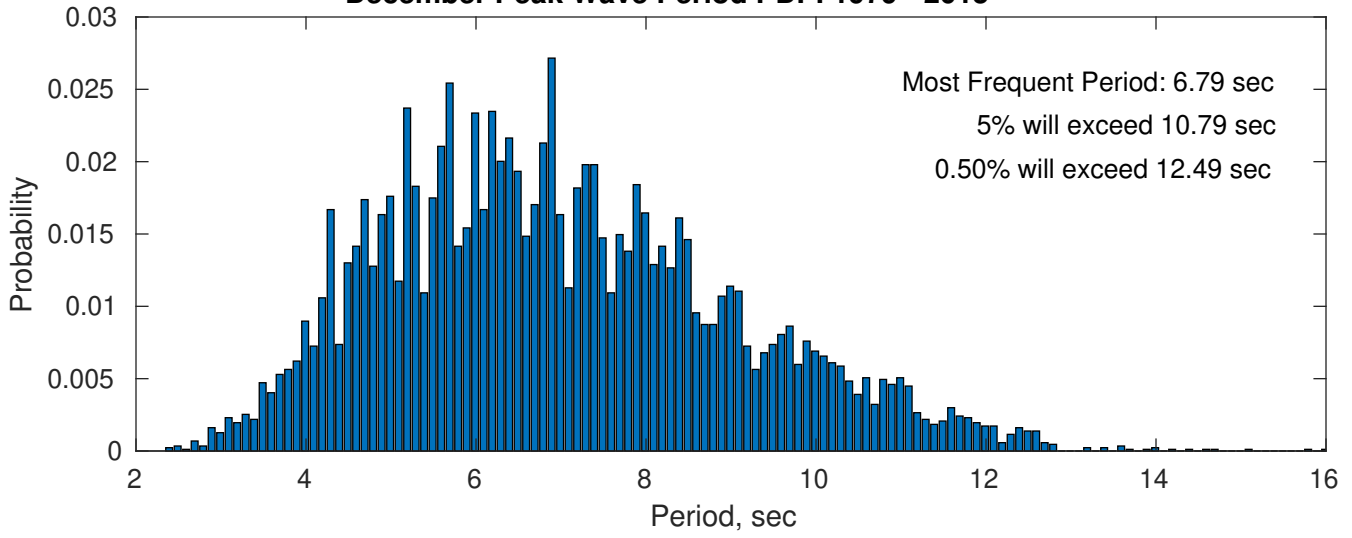
Wind-Sea: 43.44%



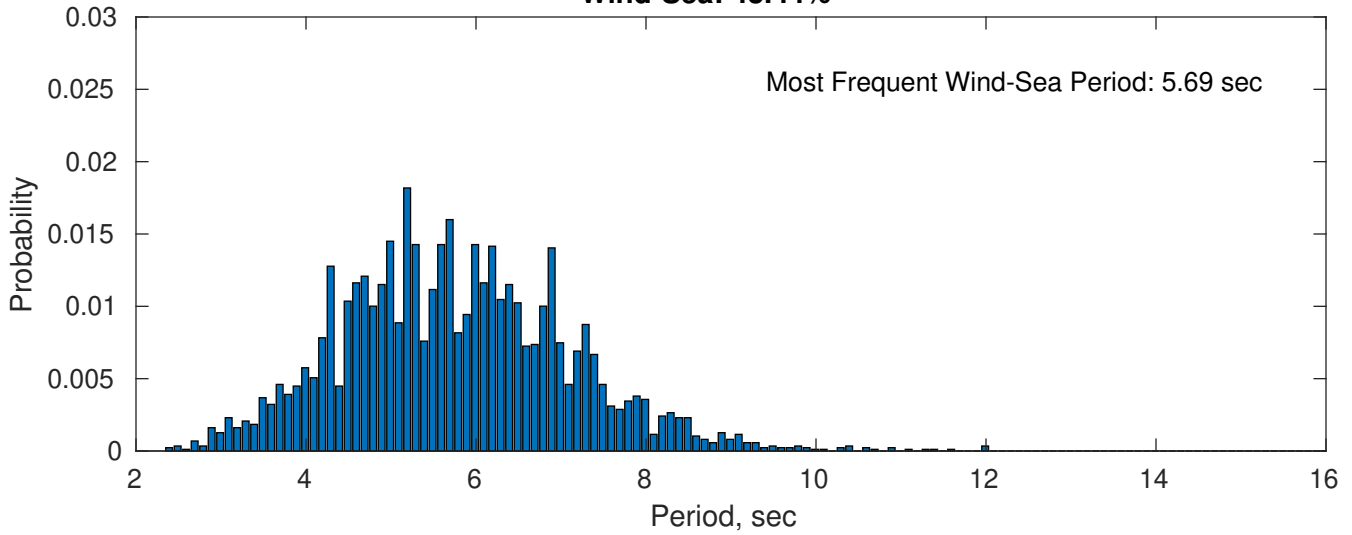
Swell: 56.56%



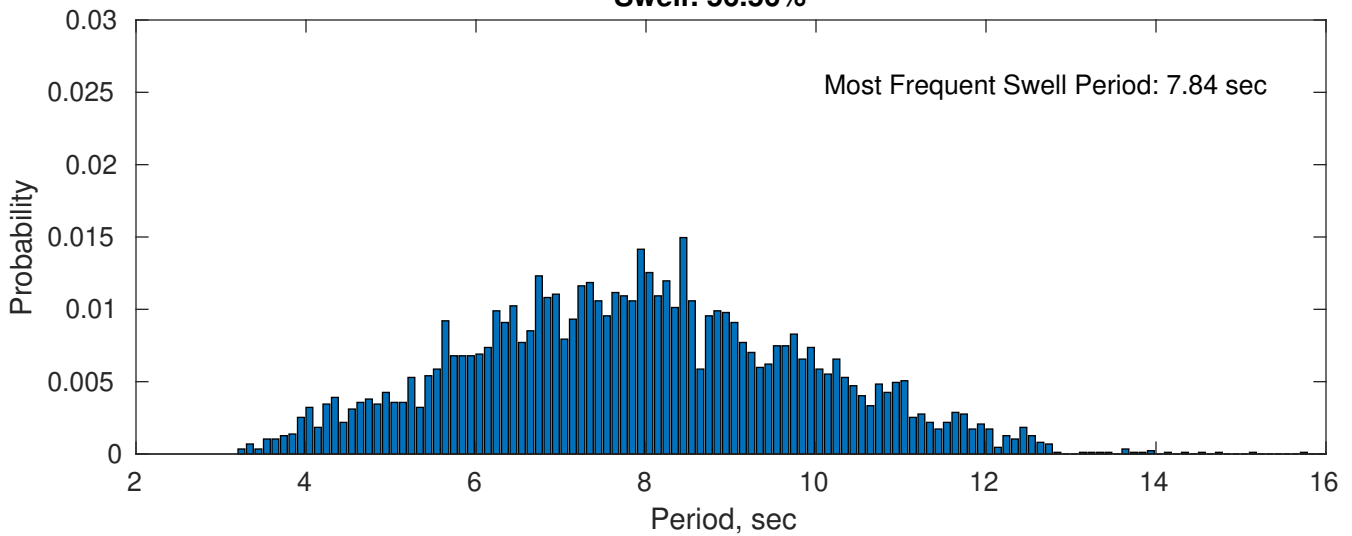
December Peak Wave Period PDF: 1979 - 2015



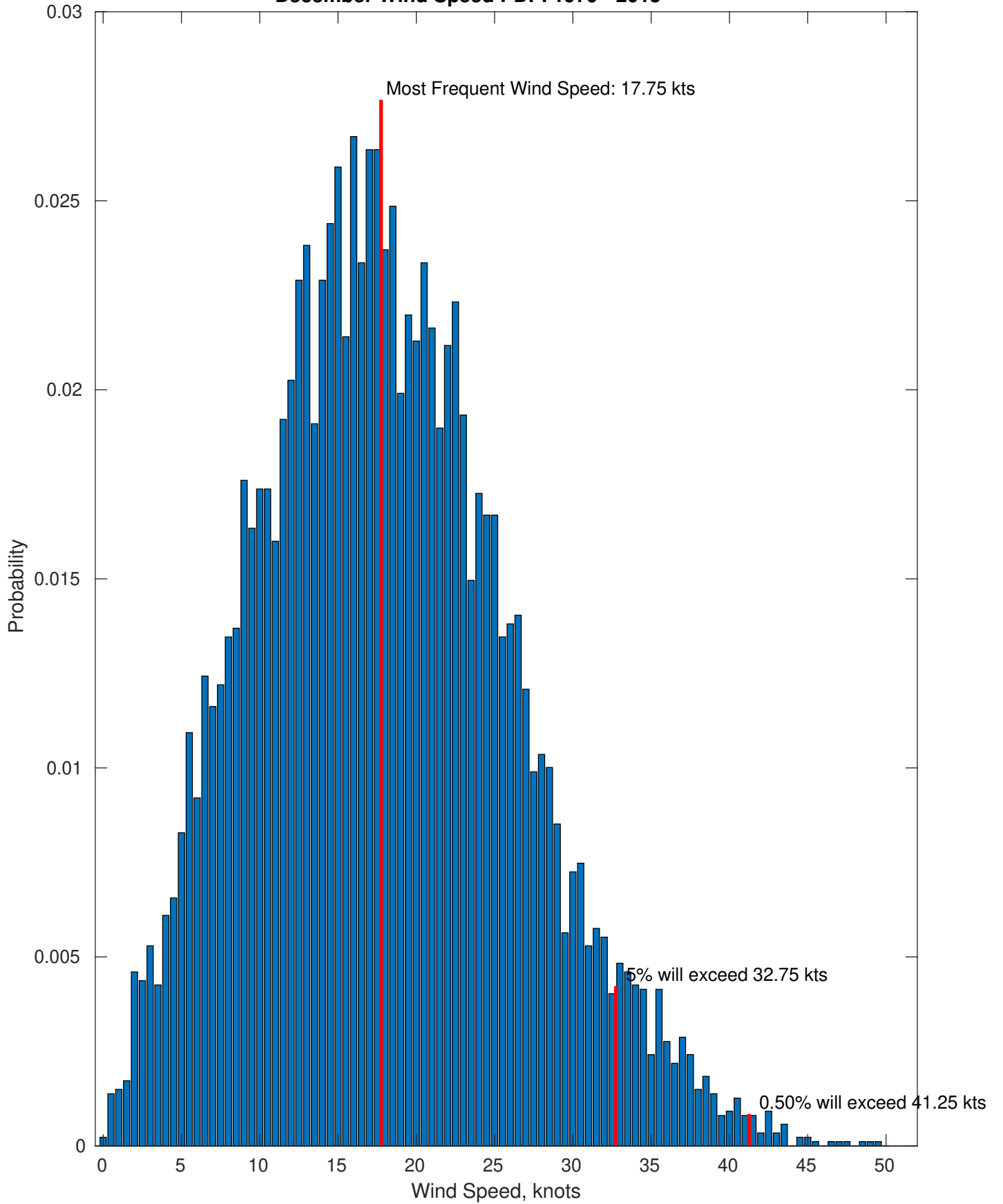
Wind-Sea: 43.44%



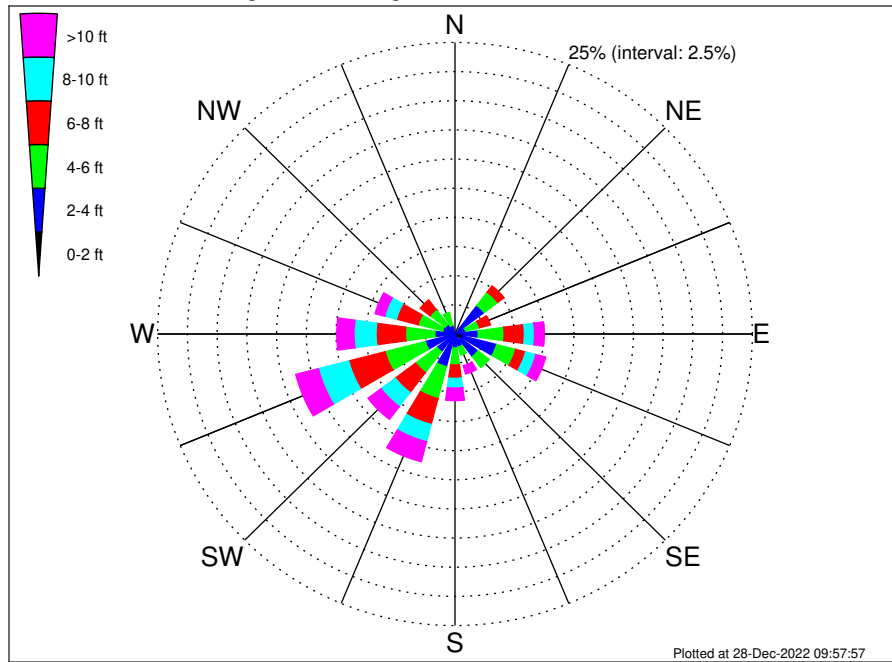
Swell: 56.56%



December Wind Speed PDF: 1979 - 2015



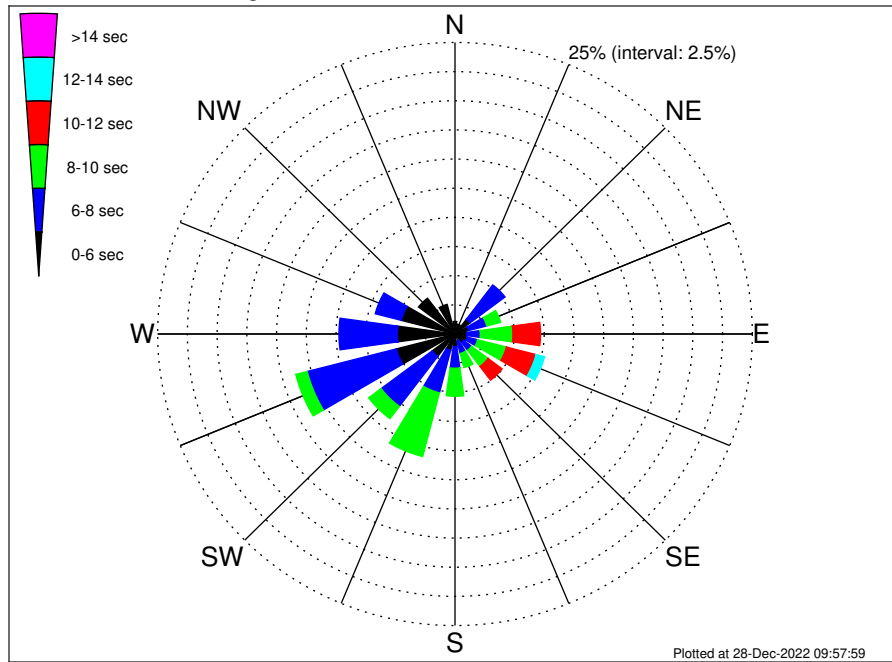
OCS A-0522 Climatological WaveHeight Rose for December: 1979 - 2015



Joint Frequency Distribution Table

	N	NNE	NE	ENE	E	ESE	SE	SSE	S	SSW	SW	WSW	W	WNW	NW	NNW	Total
calm	•	•	•	•	•	•	•	•	•	•	0.01	•	0.01	•	•	•	0.02
1 - 2 ft	0.05	0.03	0.46	0.09	0.31	0.68	0.58	0.07	0.17	0.37	0.05	0.30	0.16	0.05	0.06	0.05	3.46
2 - 4 ft	0.43	0.26	2.60	0.84	1.65	2.93	1.84	1.07	1.02	2.53	1.84	2.28	1.52	1.04	0.96	0.74	23.54
4 - 6 ft	0.32	0.38	1.44	1.20	2.17	1.66	1.19	0.72	1.46	2.82	2.24	3.49	2.47	2.12	1.61	1.13	26.42
6 - 8 ft	0.21	0.16	0.67	0.94	1.70	0.86	0.61	0.47	1.15	2.29	2.14	3.16	2.47	1.89	1.04	0.51	20.28
8 - 10 ft	0.09	0.10	0.20	0.47	0.85	0.90	0.36	0.46	0.83	1.53	1.51	2.64	1.85	1.02	0.39	0.21	13.41
10 - 12 ft	0.06	0.03	0.23	0.25	0.37	0.48	0.20	0.22	0.49	1.01	0.83	1.15	1.01	0.63	0.10	0.13	7.20
12 - 14 ft	0.07	0.05	0.14	0.13	0.24	0.18	0.14	0.32	0.31	0.46	0.28	0.58	0.32	0.17	0.09	0.03	3.51
14 - 16 ft	•	•	0.01	0.09	0.05	0.09	0.06	0.17	0.17	0.20	0.15	0.18	0.12	0.02	0.03	0.02	1.37
16 - 18 ft	•	•	•	0.01	0.07	•	0.03	0.01	0.06	0.05	0.07	0.06	•	•	0.01	0.01	0.38
> 18 ft	•	•	•	0.01	0.10	0.09	0.02	0.02	0.05	0.06	0.05	•	•	•	•	•	0.40
Total	1.22	1.02	5.74	4.04	7.51	7.88	5.02	3.54	5.72	11.31	9.16	13.83	9.94	6.94	4.29	2.82	100.00

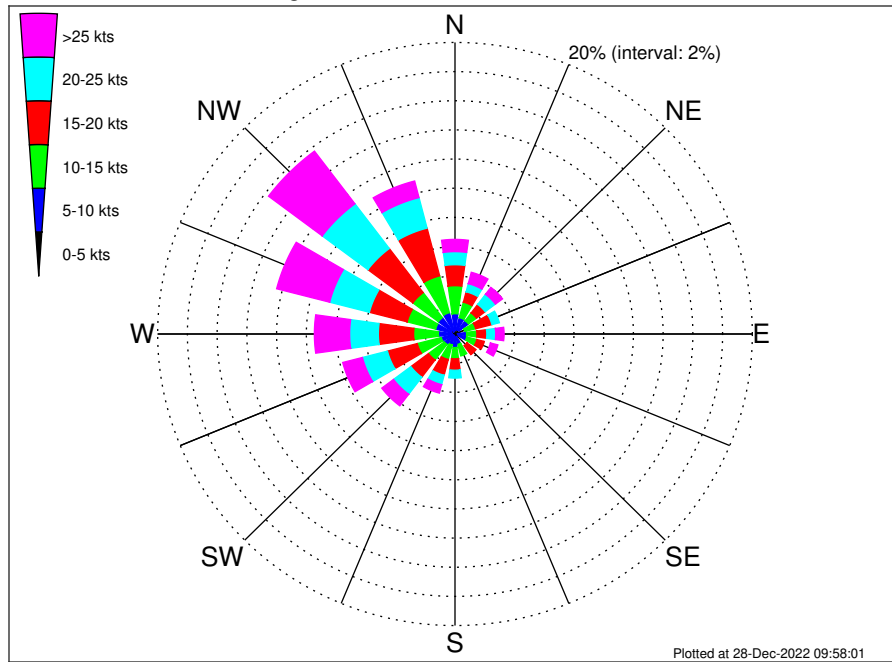
OCS A-0522 Climatological WavePeriod Rose for December: 1979 - 2015



Joint Frequency Distribution Table

	N	NNE	NE	ENE	E	ESE	SE	SSE	S	SSW	SW	WSW	W	WNW	NW	NNW	Total
calm	•	•	•	•	•	•	•	•	•	•	•	•	•	•	•	•	•
1 - 2 sec	•	•	•	•	•	•	•	•	•	•	•	•	•	•	•	•	•
2 - 4 sec	0.32	0.22	0.20	0.14	0.32	0.28	0.22	0.18	0.26	0.25	0.25	0.25	0.38	0.22	0.24	0.38	4.12
4 - 6 sec	0.76	0.64	1.39	1.05	0.67	0.77	0.70	0.44	0.82	1.20	2.15	4.84	4.46	4.44	3.60	2.24	30.18
6 - 8 sec	0.14	0.16	3.68	1.58	1.14	0.92	0.83	1.10	1.85	3.76	5.37	7.74	4.91	2.27	0.45	0.20	36.11
8 - 10 sec	•	•	0.47	1.20	2.74	2.50	1.74	1.25	2.41	5.64	1.31	0.99	0.18	0.01	•	•	20.44
10 - 12 sec	•	•	•	0.08	2.32	2.58	1.47	0.56	0.38	0.46	0.07	•	•	•	•	•	7.93
12 - 14 sec	•	•	•	•	0.32	0.74	0.06	•	•	•	•	•	•	•	•	•	1.12
14 - 16 sec	•	•	•	•	•	0.08	•	•	•	•	•	•	•	•	•	•	0.08
18 - 20 sec	•	•	•	•	•	0.02	•	•	•	•	•	•	•	•	•	•	0.02
22 - 24 sec	•	•	•	•	•	•	•	•	•	•	•	•	•	•	•	•	•
Total	1.22	1.02	5.74	4.04	7.51	7.88	5.02	3.54	5.72	11.31	9.16	13.83	9.94	6.94	4.29	2.82	100.00

OCS A-0522 Climatological Wind Rose for December: 1979 - 2015



Joint Frequency Distribution Table

	N	NNE	NE	ENE	E	ESE	SE	SSE	S	SSW	SW	WSW	W	WNW	NW	NNW	Total
calm	•	0.01	0.06	•	•	0.01	•	0.01	•	0.02	•	0.02	•	•	0.02	•	0.16
0 - 5 kts	0.25	0.30	0.28	0.21	0.17	0.25	0.15	0.20	0.28	0.13	0.12	0.21	0.20	0.26	0.28	0.17	3.44
5 - 10 kts	1.14	0.85	0.81	0.47	0.61	0.55	0.39	0.53	0.66	0.62	0.78	0.72	0.92	1.08	1.10	1.33	12.58
10 - 15 kts	1.92	1.09	0.67	0.76	0.69	0.70	0.46	0.82	0.77	1.04	1.33	1.67	1.67	1.98	2.15	2.61	20.33
15 - 20 kts	1.44	0.74	0.74	1.13	0.67	0.52	0.77	0.44	0.78	1.12	1.48	2.07	2.37	2.62	3.79	3.38	24.05
20 - 25 kts	0.90	0.58	0.86	0.52	0.60	0.43	0.35	0.37	0.54	0.67	1.46	1.74	1.93	2.76	3.84	2.16	19.70
25 - 30 kts	0.43	0.36	0.30	0.22	0.24	0.31	0.22	0.25	0.25	0.41	0.75	0.90	1.48	2.15	2.46	0.71	11.45
30 - 35 kts	0.14	0.26	0.12	0.06	0.17	0.14	0.14	0.09	0.09	0.14	0.17	0.28	0.67	1.05	1.43	0.38	5.32
35 - 40 kts	0.23	0.15	0.10	0.06	0.06	0.05	0.09	0.06	0.09	0.03	0.05	0.12	0.20	0.44	0.49	0.02	2.23
40 - 45 kts	0.03	0.03	0.06	0.03	0.06	0.02	0.02	0.01	•	0.01	0.02	0.06	0.02	0.05	0.14	0.05	0.62
45 - 50 kts	0.01	•	0.02	0.01	0.03	•	•	•	•	•	•	0.02	•	•	•	0.01	0.12
Total	6.49	4.37	4.00	3.46	3.30	2.98	2.59	2.77	3.46	4.19	6.17	7.80	9.46	12.39	15.71	10.84	100.00