

OCS A-0522 - February

Latitude: 40.67 N Longitude: 70.26 W

Weather Days

Wave Height > 4.0 ft Mean: 21.4 days Range: 19.1 - 23.8 days p50:22.5 days p75:20.5 days p90:19 days

Wave Height > 5.0 ft Mean: 17.3 days Range: 14.7 - 19.9 days p50:18 days p75:16.5 days p90:14.5 days

Wave Height > 6.0 ft Mean: 13.2 days Range: 10.3 - 16.2 days p50:14 days p75:12 days p90:9 days

Wind Speed > 20.0 knots Mean: 11.4 days Range: 9.1 - 13.7 days p50:11.5 days p75:10 days p90:8.5 days

Wind Speed > 25.0 knots Mean: 5.4 days Range: 3.6 - 7.2 days p50:5 days p75:4.5 days p90:3 days

Wind Speed > 30.0 knots Mean: 1.8 days Range: 0.9 - 2.8 days p50:2 days p75:1.5 days p90:1 days

Working Window Probability

Wave Height < 4.0 ft 3 days or longer: 8%
 5 days or longer: 0%
 7 days or longer: 0%

Wave Height < 5.0 ft 3 days or longer: 18%
 5 days or longer: 0%
 7 days or longer: 0%

Wave Height < 6.0 ft 3 days or longer: 30%
 5 days or longer: 3%
 7 days or longer: 1%

Waves

Mean Height: 4 - 6 ft

The wave heights will occasionally reach 16 - 18 ft, but rarely higher.

Mean Period: 6 - 8 sec

The wave periods will occasionally reach 12 - 14 sec, but rarely longer.

Principle Direction, from: WSW

WindSea/Swell: 43% / 57%

Winds

Mean Speed: 15 - 20 kts

The winds will occasionally reach 35 - 40 kts, but rarely greater.

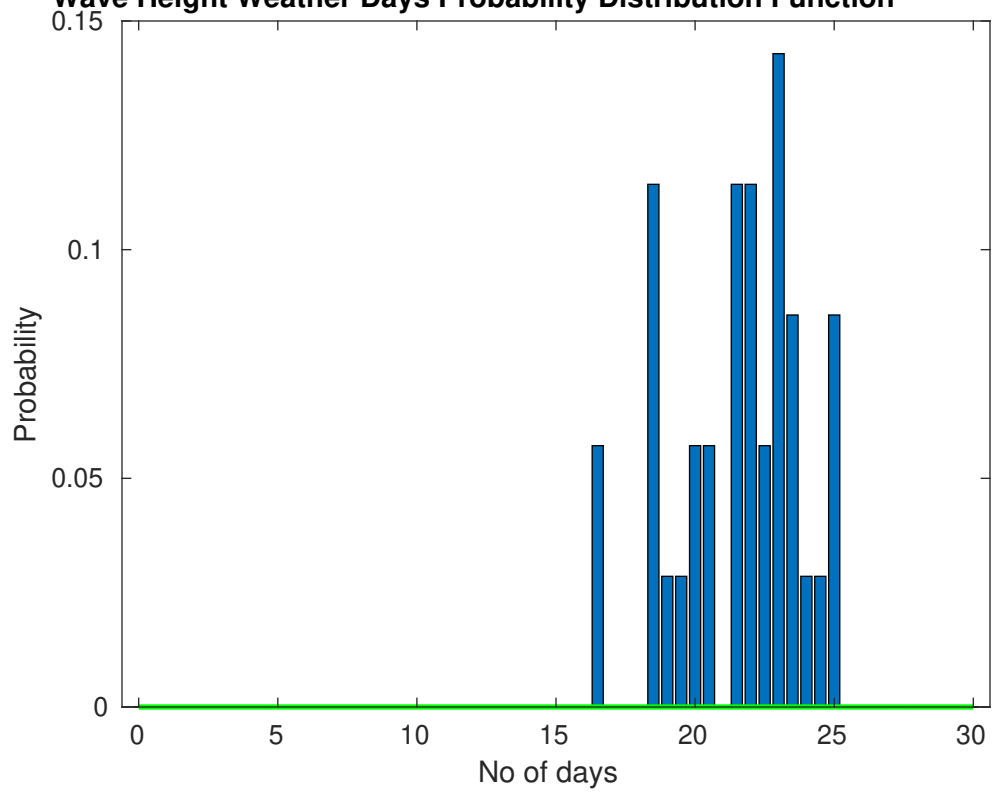
Principle Direction, from: NW

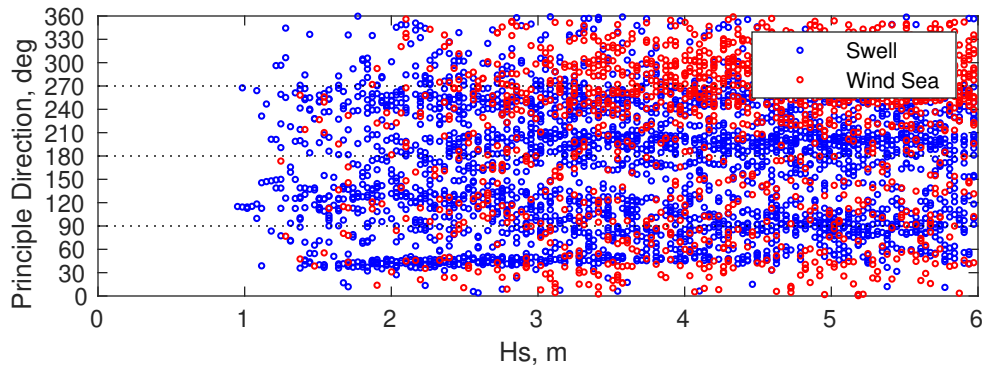
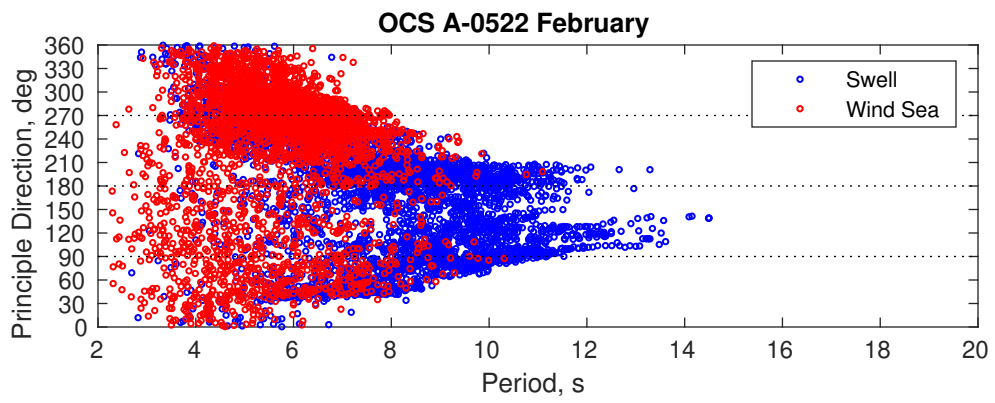
Severe Storms

There is a 89 % chance of a storm occurring in the month with winds peaking above 34 kts.

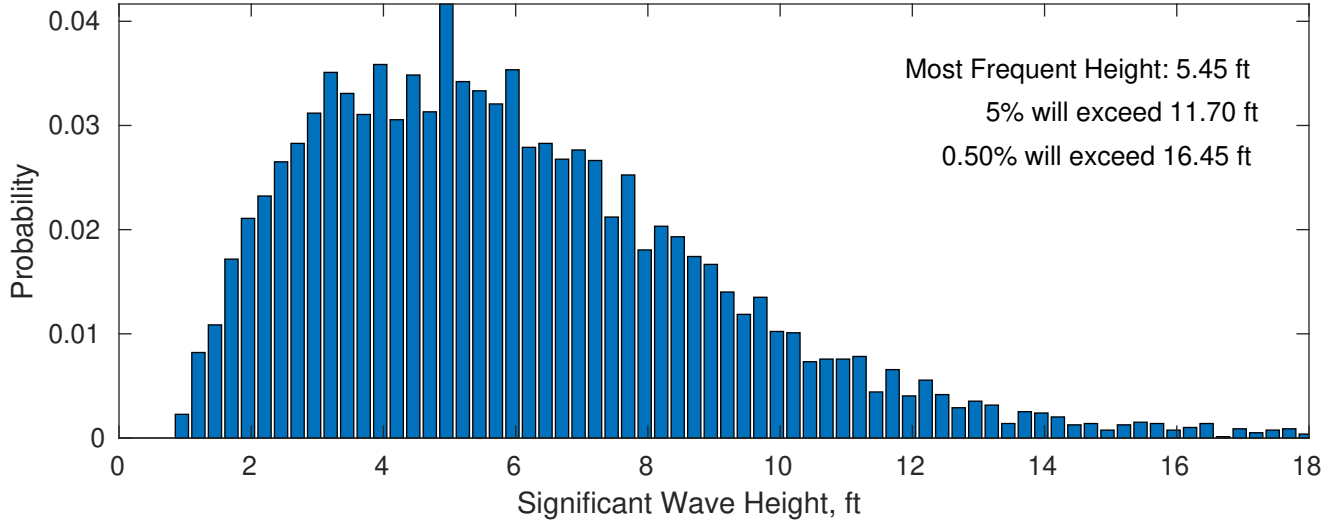
There is a 103 % chance of a storm occurring in the month with waves peaking at 4m (13 ft) or greater.

Wave Height Weather Days Probability Distribution Function

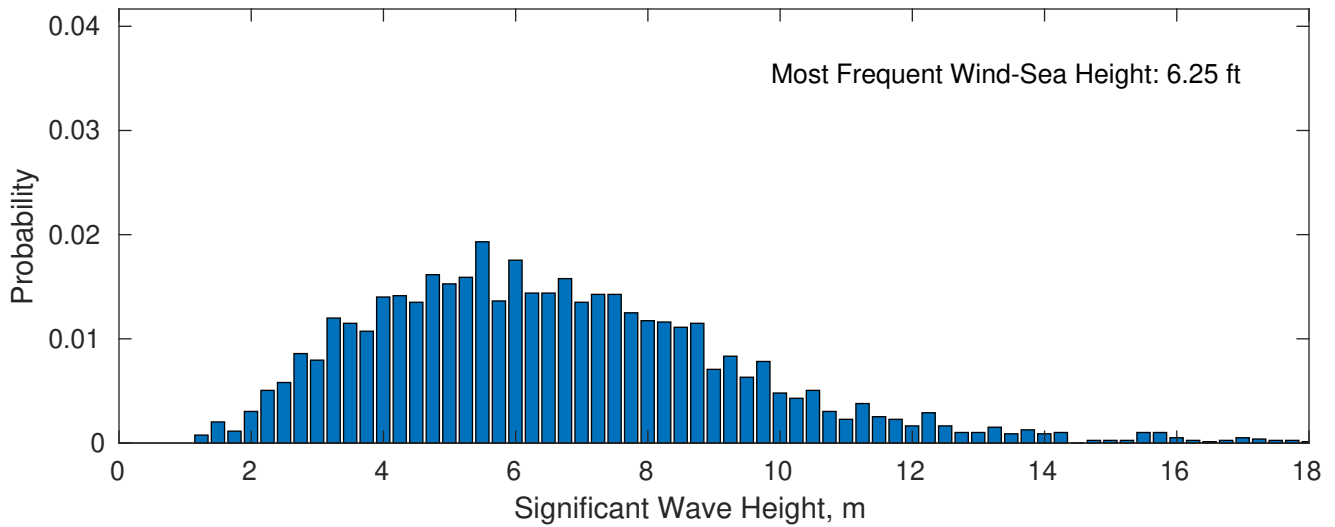




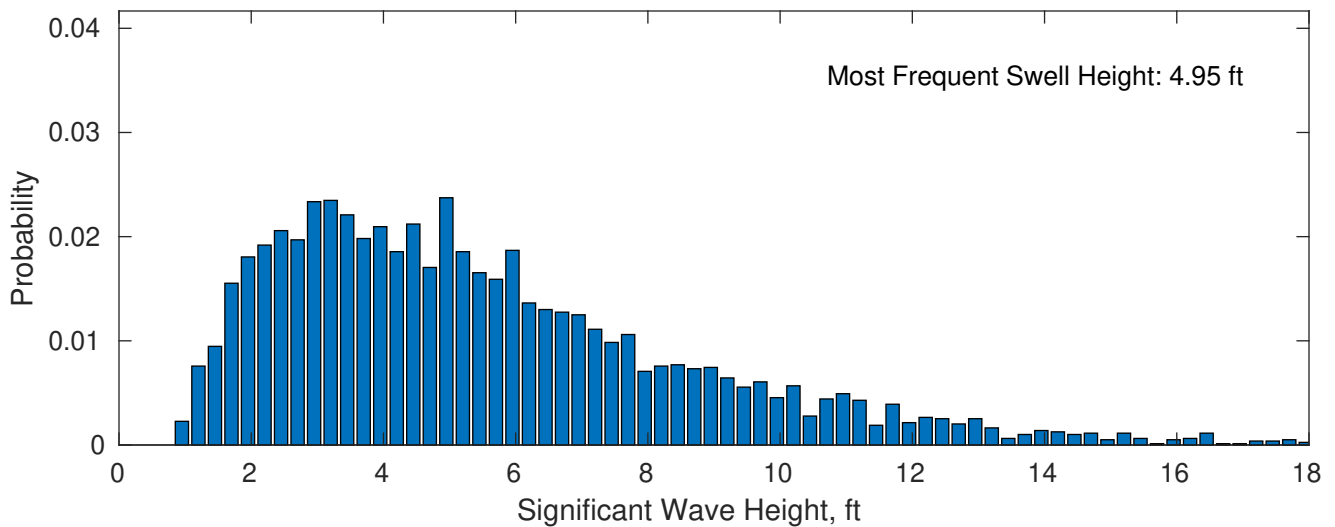
February Wave Height PDF: 1979 - 2015



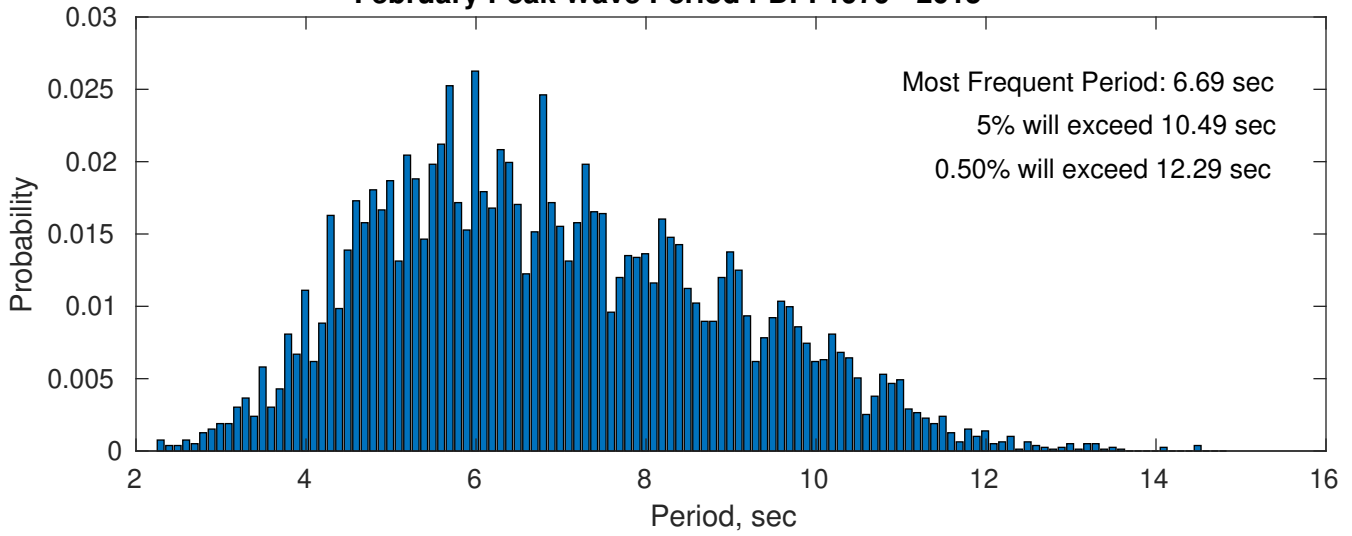
Wind-Sea: 42.99%



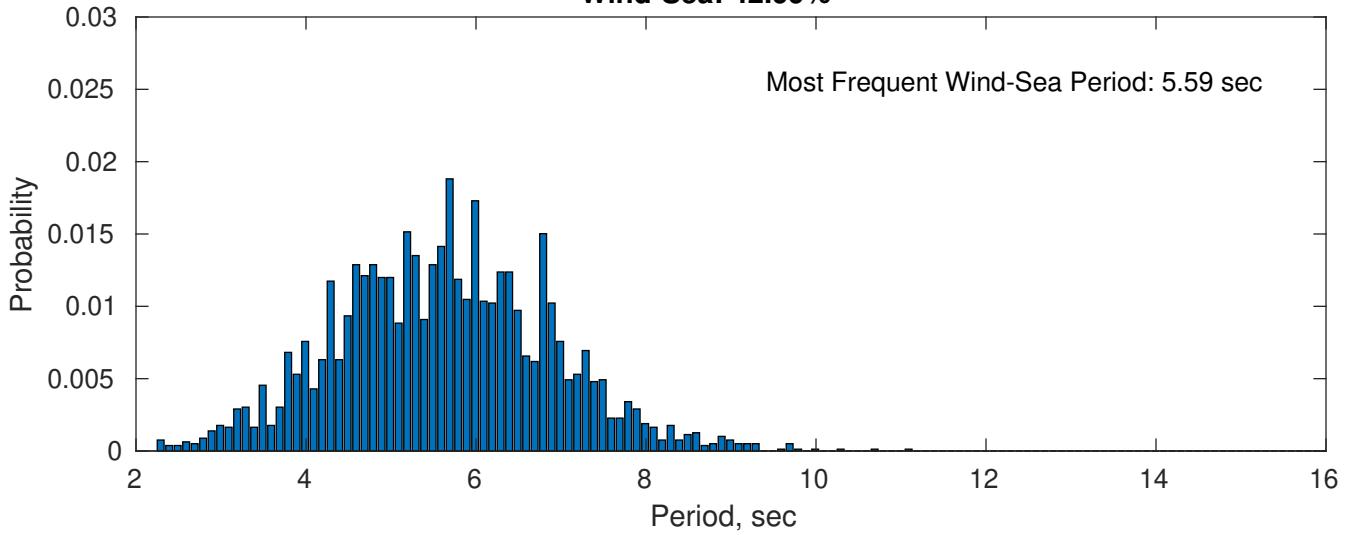
Swell: 57.01%



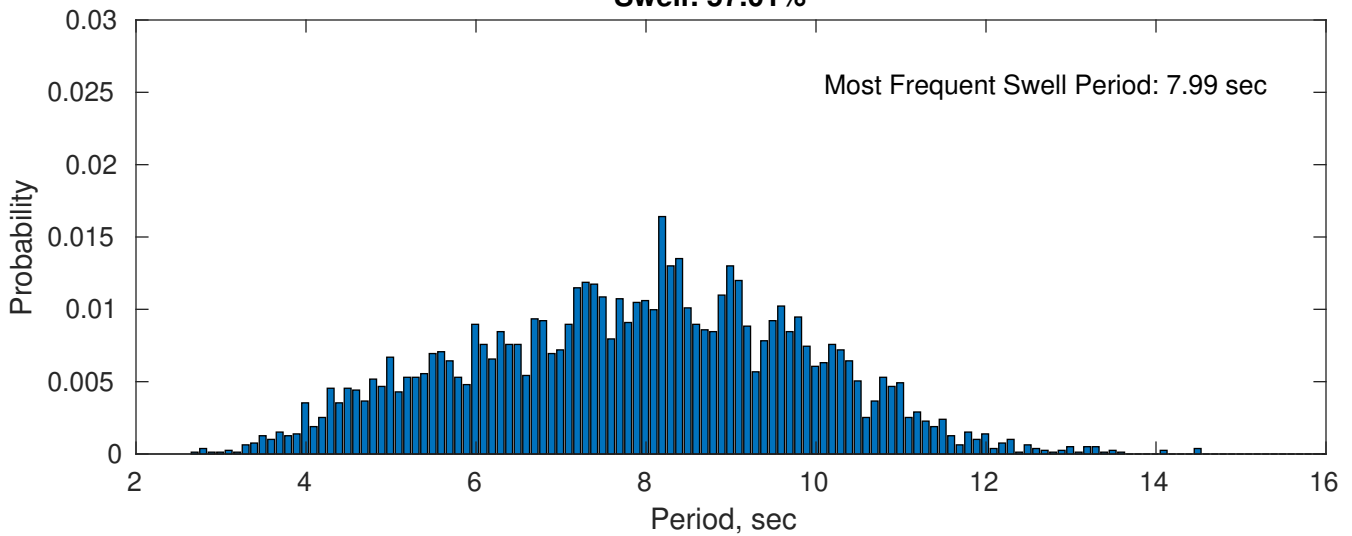
February Peak Wave Period PDF: 1979 - 2015



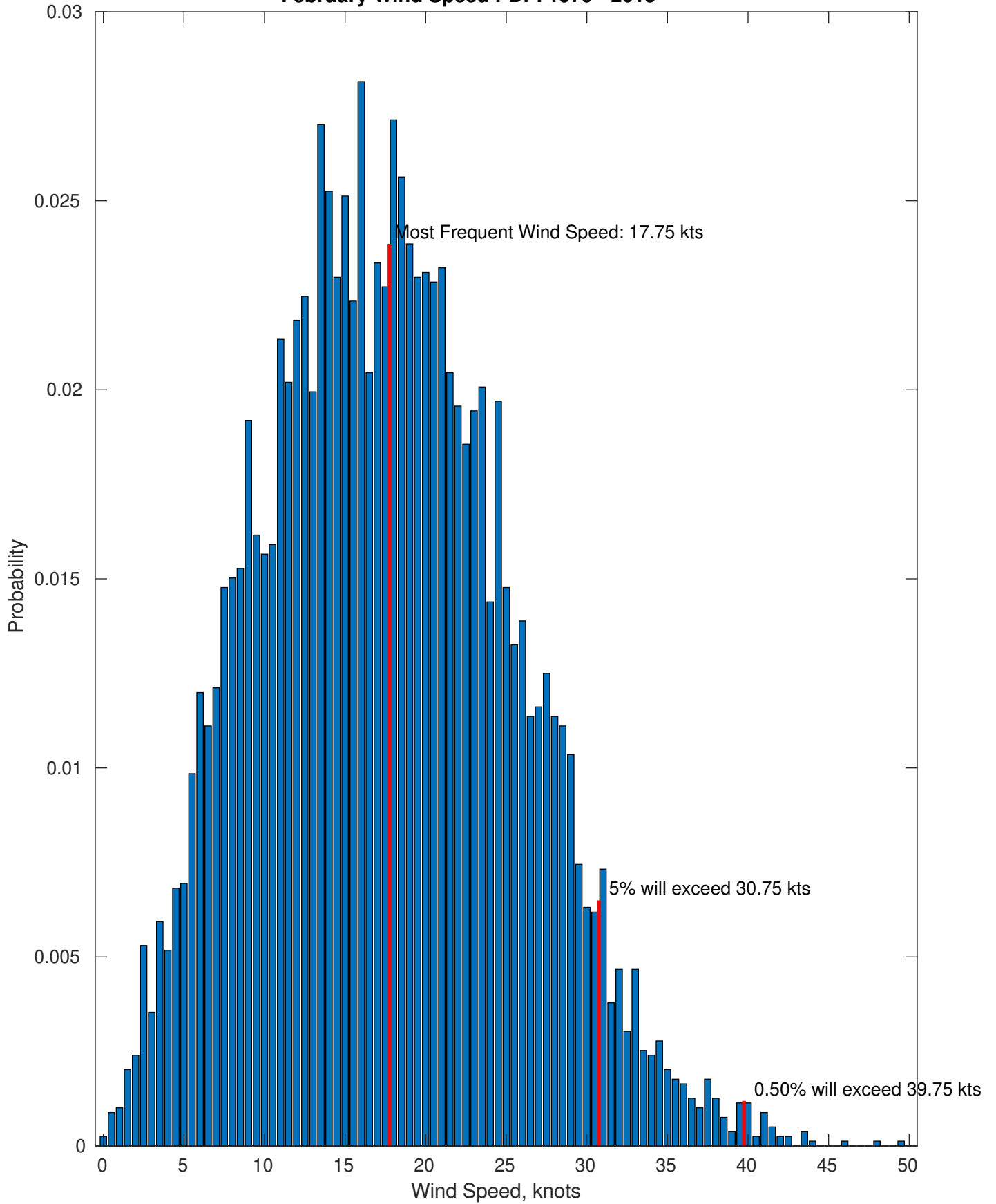
Wind-Sea: 42.99%



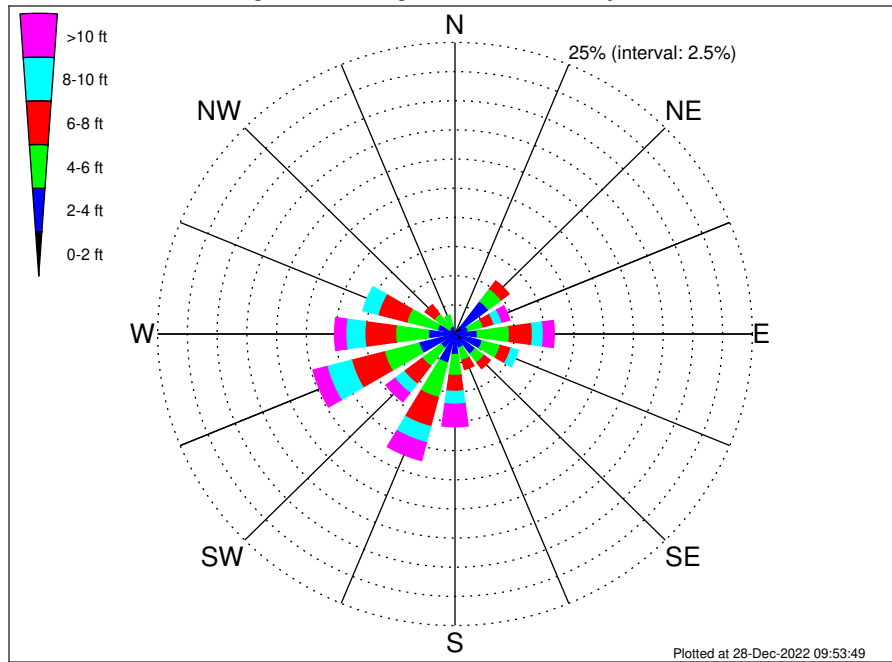
Swell: 57.01%



February Wind Speed PDF: 1979 - 2015



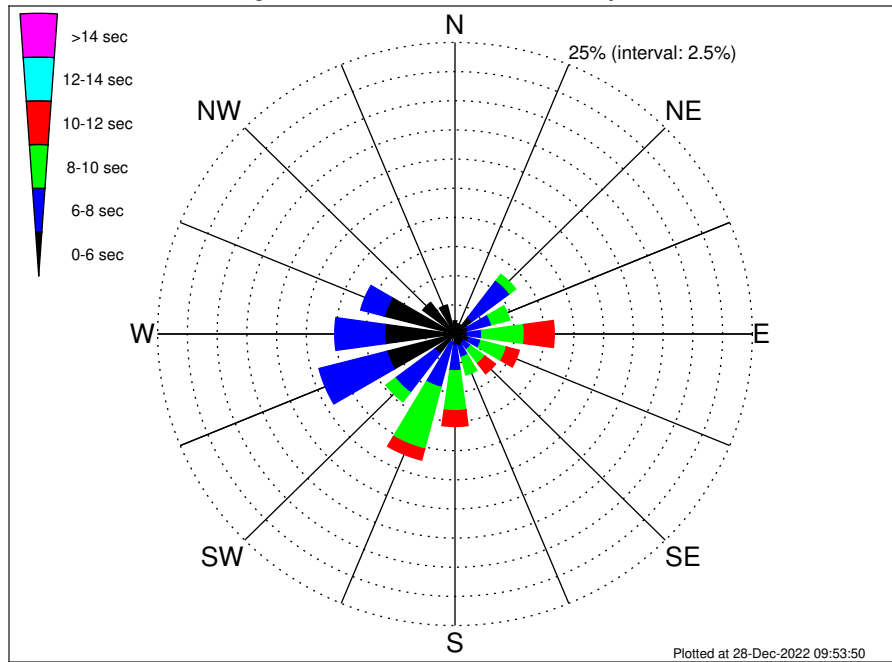
OCS A-0522 Climatological WaveHeight Rose for February: 1979 - 2015



Joint Frequency Distribution Table

	N	NNE	NE	ENE	E	ESE	SE	SSE	S	SSW	SW	WSW	W	WNW	NW	NNW	Total
calm	•	•	•	•	•	0.03	•	•	•	•	•	•	0.01	•	•	•	0.04
1 - 2 ft	0.01	0.05	0.69	0.19	0.21	0.43	0.68	0.20	0.16	0.23	0.20	0.48	0.27	0.13	0.04	0.05	4.03
2 - 4 ft	0.39	0.44	2.82	0.96	1.67	1.91	1.44	1.04	1.60	2.32	1.28	2.65	1.96	1.40	0.57	0.64	23.08
4 - 6 ft	0.45	0.28	1.35	1.30	2.70	1.58	0.95	1.10	1.79	3.07	1.97	3.00	2.76	2.66	1.57	0.97	27.51
6 - 8 ft	0.20	0.14	0.83	0.93	1.93	0.92	0.64	0.81	1.36	2.59	1.89	2.85	2.59	2.50	0.97	0.58	21.75
8 - 10 ft	0.09	0.04	0.44	0.69	0.92	0.63	0.38	0.43	1.10	1.41	0.98	2.13	1.60	1.30	0.50	0.38	13.04
10 - 12 ft	0.04	0.04	0.13	0.40	0.39	0.42	0.15	0.20	1.05	0.83	0.56	0.73	0.69	0.20	0.13	0.04	6.00
12 - 14 ft	0.01	0.01	0.10	0.15	0.21	0.06	0.18	0.13	0.49	0.39	0.27	0.40	0.19	•	0.04	0.03	2.66
14 - 16 ft	•	•	0.01	0.10	0.15	0.05	0.05	0.19	0.24	0.19	0.09	0.06	0.04	•	•	0.01	1.19
16 - 18 ft	•	•	0.03	0.03	0.15	0.06	0.03	0.03	0.10	0.15	0.04	0.01	0.01	•	•	•	0.63
> 18 ft	•	•	•	•	•	•	•	•	0.05	0.03	•	•	•	•	•	•	0.08
Total	1.20	1.00	6.40	4.76	8.34	6.09	4.49	4.12	7.95	11.21	7.27	12.33	10.12	8.19	3.81	2.70	100.00

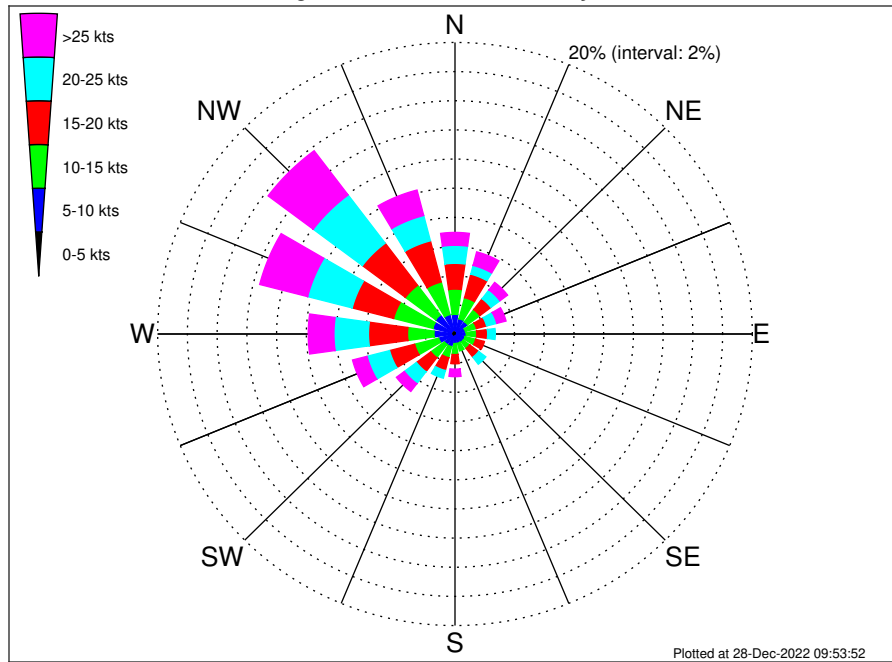
OCS A-0522 Climatological WavePeriod Rose for February: 1979 - 2015



Joint Frequency Distribution Table

	N	NNE	NE	ENE	E	ESE	SE	SSE	S	SSW	SW	WSW	W	WNW	NW	NNW	Total
calm	•	•	•	•	•	•	•	•	•	•	•	•	•	•	•	•	•
1 - 2 sec	•	•	•	•	•	•	•	•	•	•	•	•	•	•	•	•	•
2 - 4 sec	0.33	0.25	0.35	0.18	0.34	0.42	0.21	0.34	0.27	0.23	0.28	0.20	0.44	0.32	0.21	0.44	4.81
4 - 6 sec	0.81	0.66	1.44	0.97	0.68	0.80	0.72	0.74	0.71	0.50	1.84	5.71	5.47	5.82	3.18	2.13	32.18
6 - 8 sec	0.06	0.09	3.96	2.03	1.22	1.04	0.71	0.97	2.18	3.99	4.15	5.91	4.20	2.06	0.42	0.13	33.13
8 - 10 sec	•	•	0.64	1.58	3.59	2.22	1.51	1.57	3.42	5.47	1.00	0.52	0.01	•	•	•	21.53
10 - 12 sec	•	•	•	•	2.51	1.11	1.11	0.49	1.35	0.98	•	•	•	•	•	•	7.56
12 - 14 sec	•	•	•	•	•	0.50	0.16	•	0.03	0.04	•	•	•	•	•	•	0.73
14 - 16 sec	•	•	•	•	•	•	0.06	•	•	•	•	•	•	•	•	•	0.06
18 - 20 sec	•	•	•	•	•	•	•	•	•	•	•	•	•	•	•	•	•
22 - 24 sec	•	•	•	•	•	•	•	•	•	•	•	•	•	•	•	•	•
Total	1.20	1.00	6.40	4.76	8.34	6.09	4.49	4.12	7.95	11.21	7.27	12.33	10.12	8.19	3.81	2.70	100.00

OCS A-0522 Climatological Wind Rose for February: 1979 - 2015



Joint Frequency Distribution Table

	N	NNE	NE	ENE	E	ESE	SE	SSE	S	SSW	SW	WSW	W	WNW	NW	NNW	Total
calm	0.01	0.01	•	•	•	0.01	•	•	•	•	0.03	•	0.03	0.03	•	0.11	
0 - 5 kts	0.27	0.18	0.25	0.14	0.15	0.11	0.16	0.11	0.15	0.21	0.21	0.20	0.28	0.25	0.24	0.29	3.22
5 - 10 kts	1.07	0.90	0.81	0.58	0.61	0.58	0.53	0.54	0.50	0.68	0.68	0.91	1.14	1.26	1.36	1.09	13.24
10 - 15 kts	1.73	1.49	1.04	0.77	0.71	0.73	0.54	0.54	0.76	0.78	1.14	1.67	1.78	2.73	2.55	2.31	21.26
15 - 20 kts	1.77	1.67	0.93	0.71	0.73	0.61	0.76	0.47	0.63	0.91	1.21	1.74	2.63	2.88	3.62	2.92	24.18
20 - 25 kts	1.24	0.62	0.76	0.71	0.52	0.44	0.61	0.40	0.37	0.54	1.02	1.57	2.32	3.09	4.14	1.79	20.14
25 - 30 kts	0.45	0.47	0.30	0.34	0.24	0.15	0.23	0.21	0.30	0.32	0.52	0.78	1.11	2.07	2.90	1.36	11.77
30 - 35 kts	0.28	0.28	0.20	0.11	0.14	0.14	0.08	0.09	0.16	0.11	0.13	0.20	0.47	0.92	0.76	0.30	4.37
35 - 40 kts	0.06	0.15	0.09	0.18	0.03	0.08	0.01	•	0.04	0.01	0.03	0.03	0.10	0.28	0.13	0.10	1.30
40 - 45 kts	0.06	0.05	0.05	0.01	0.01	0.01	•	•	0.01	•	•	•	0.05	0.06	0.01	0.04	0.38
45 - 50 kts	0.03	0.01	•	•	•	•	•	•	•	•	•	•	•	•	•	•	0.04
Total	6.97	5.82	4.43	3.55	3.13	2.87	2.92	2.37	2.93	3.57	4.94	7.12	9.87	13.57	15.74	10.20	100.00