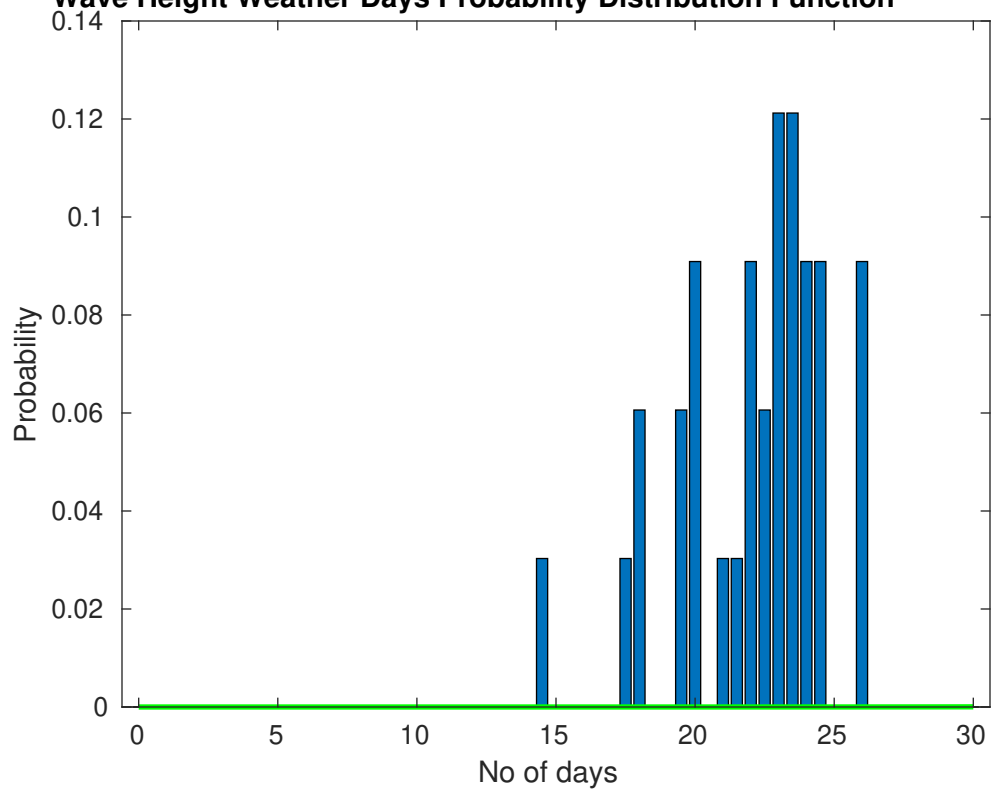
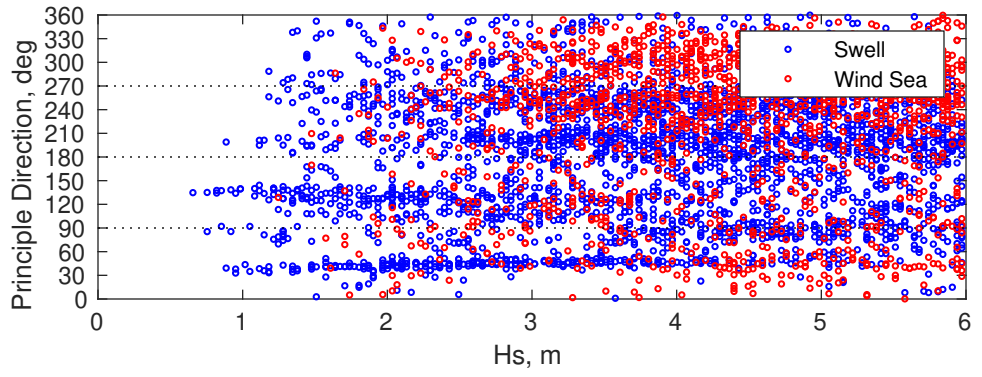
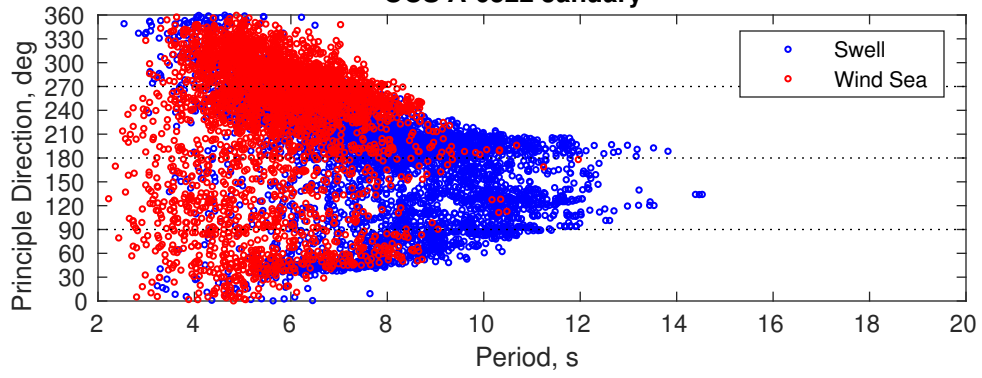




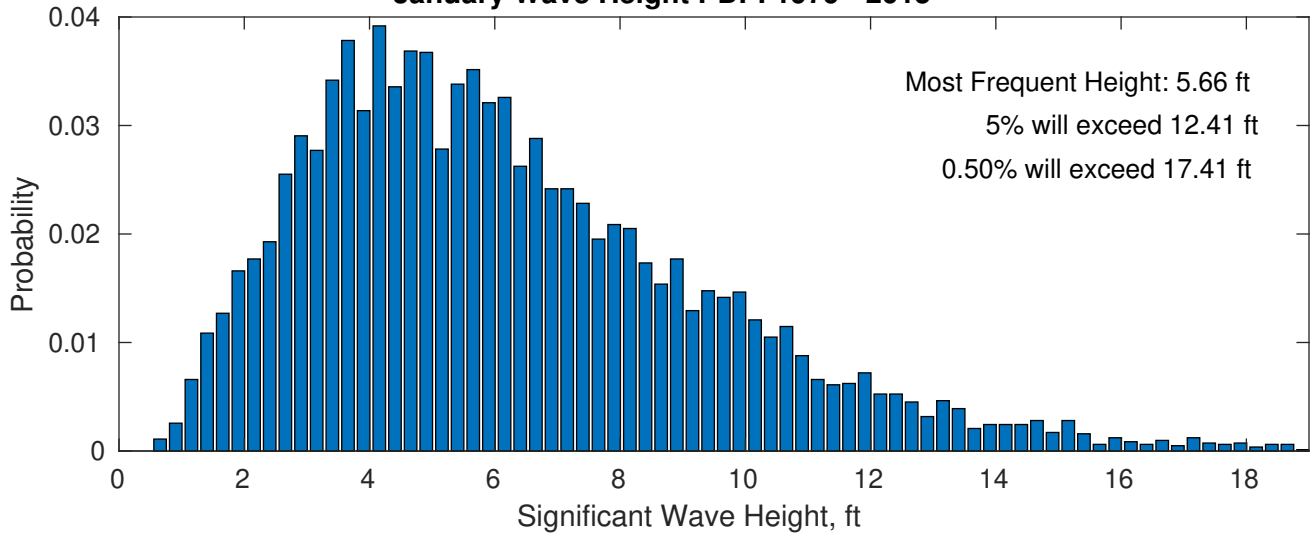
**Wave Height Weather Days Probability Distribution Function**



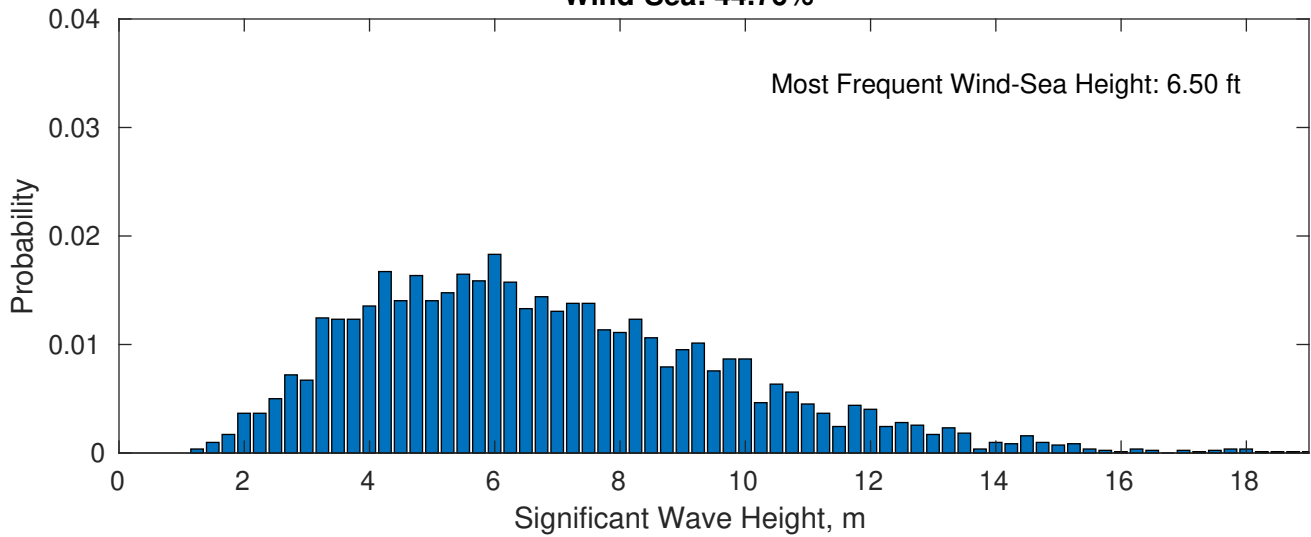
OCS A-0522 January



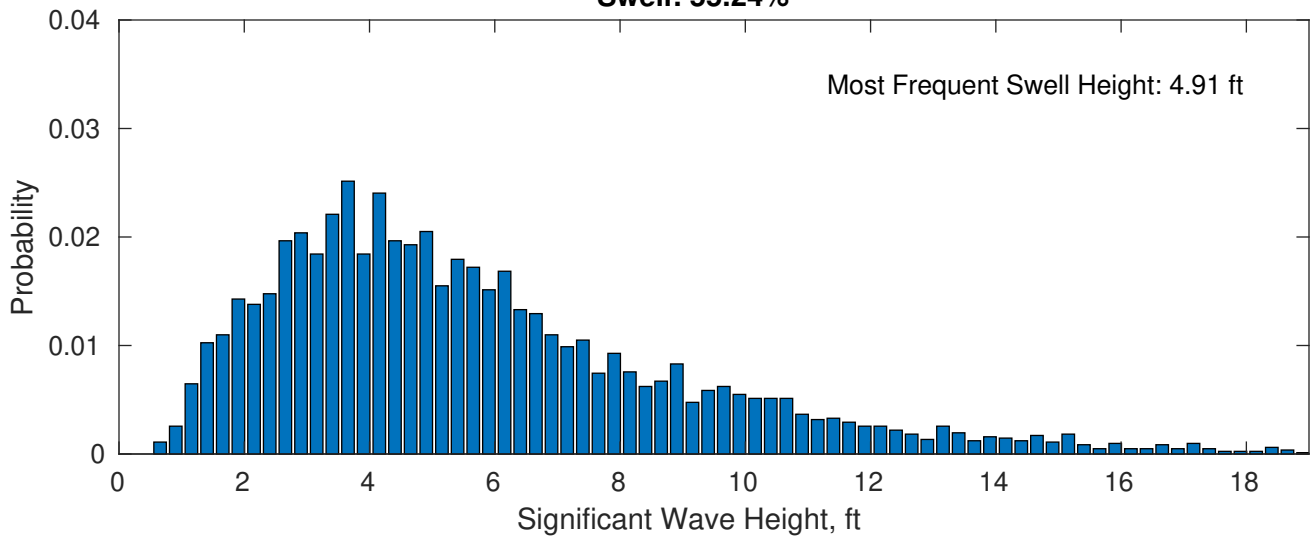
**January Wave Height PDF: 1979 - 2015**



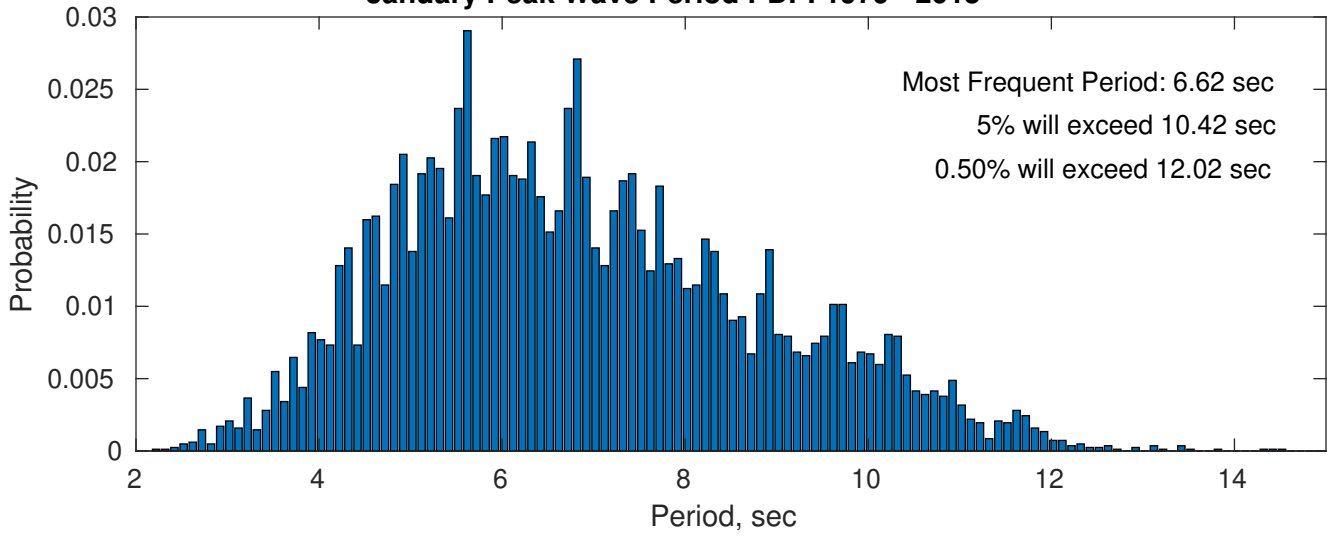
**Wind-Sea: 44.76%**



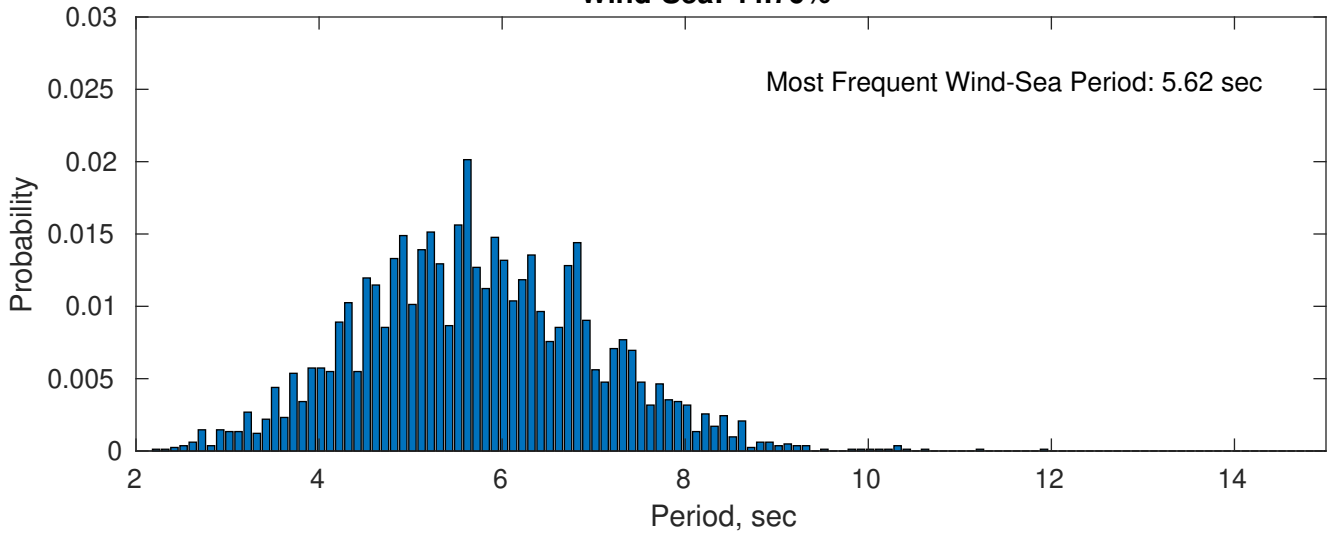
**Swell: 55.24%**



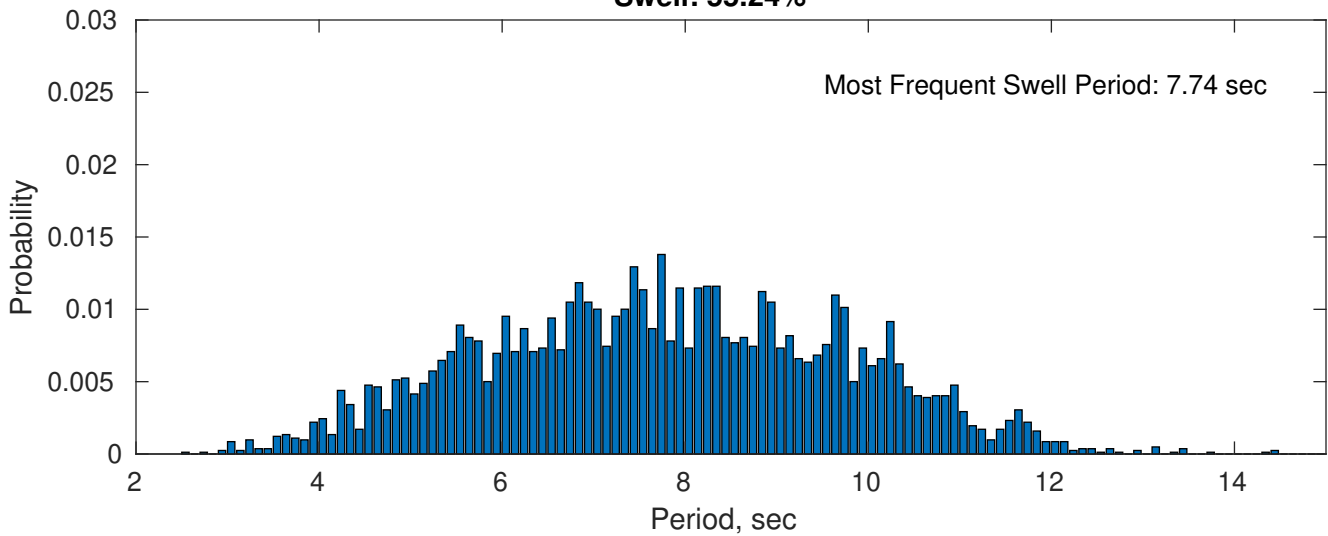
**January Peak Wave Period PDF: 1979 - 2015**



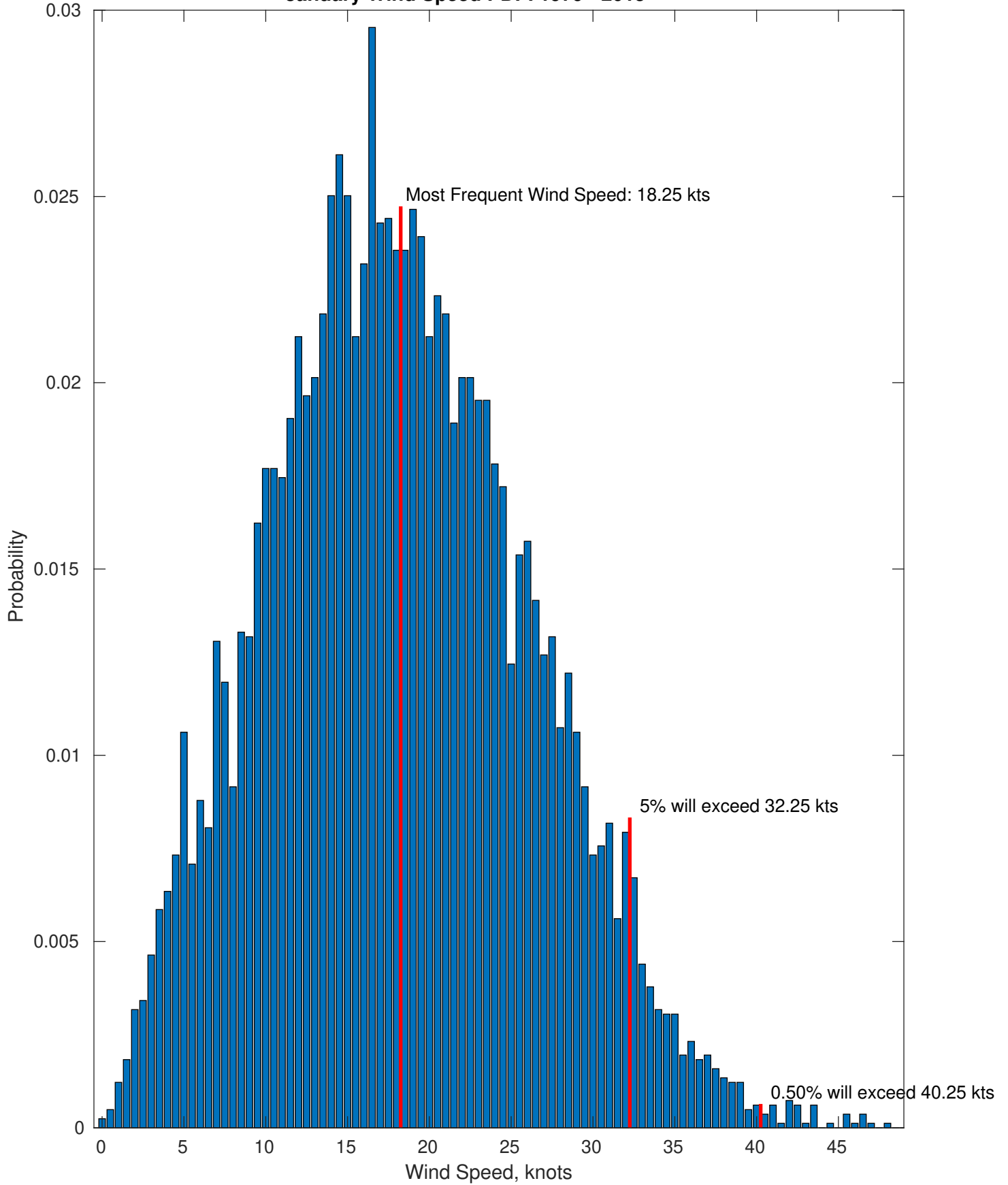
**Wind-Sea: 44.76%**



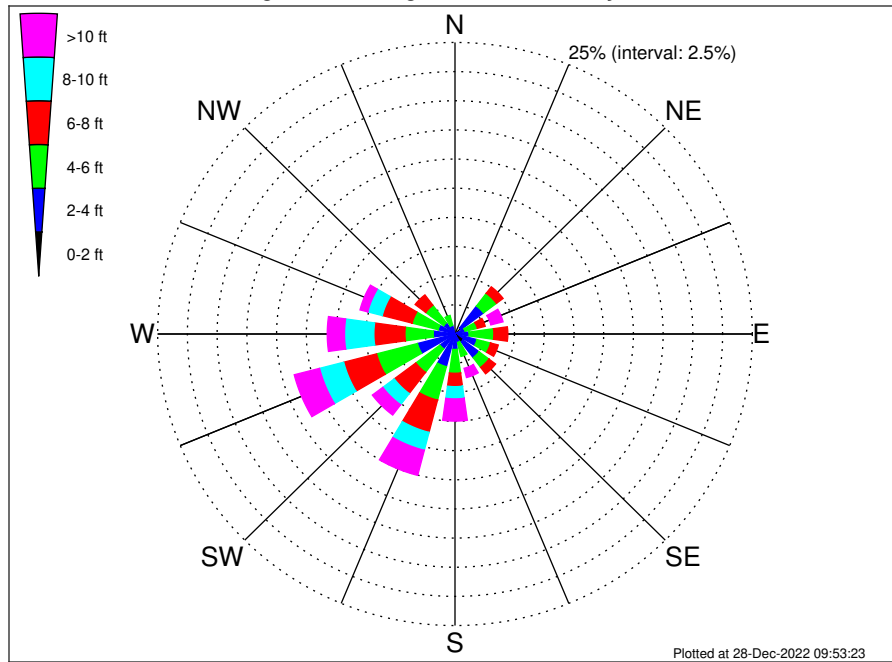
**Swell: 55.24%**



January Wind Speed PDF: 1979 - 2015



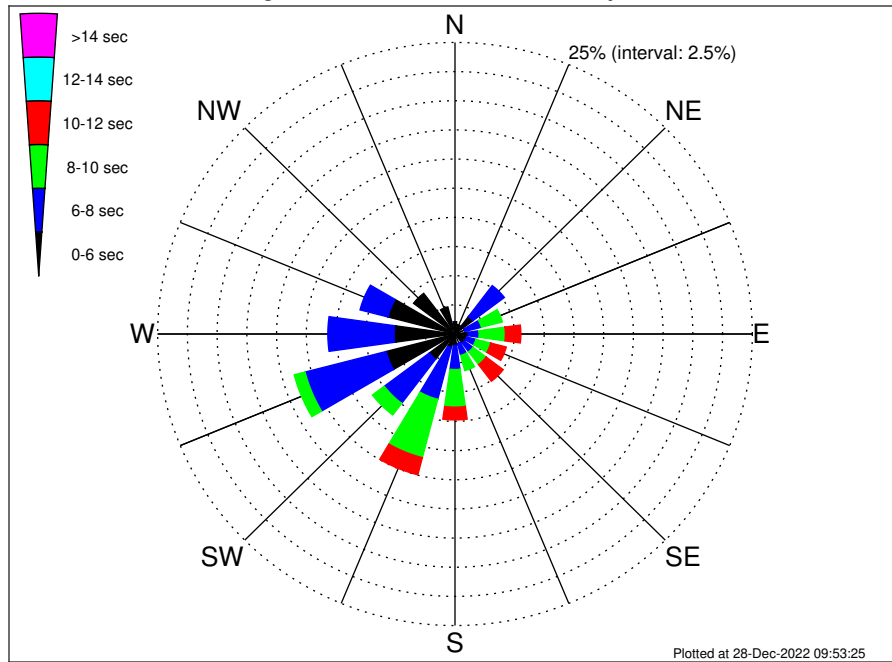
OCS A-0522 Climatological WaveHeight Rose for January: 1979 - 2015



Joint Frequency Distribution Table

	N	NNE	NE	ENE	E	ESE	SE	SSE	S	SSW	SW	WSW	W	WNW	NW	NNW	Total
calm	•	0.01	0.02	•	0.04	•	0.11	•	•	0.01	•	•	•	•	•	•	0.20
1 - 2 ft	0.07	0.10	0.61	0.11	0.18	0.29	0.73	0.11	0.09	0.34	0.12	0.32	0.22	0.10	0.07	0.12	3.59
2 - 4 ft	0.32	0.13	2.37	0.77	0.96	1.62	1.70	0.65	1.24	2.54	1.46	2.94	1.61	1.37	1.12	0.65	21.46
4 - 6 ft	0.41	0.41	1.37	1.06	2.09	1.17	1.04	1.23	2.04	2.97	2.54	3.55	2.38	2.26	1.89	0.88	27.29
6 - 8 ft	0.27	0.21	0.70	0.68	1.17	0.67	0.70	0.57	1.15	2.86	2.27	2.86	2.61	2.60	1.11	0.54	20.96
8 - 10 ft	0.04	0.05	0.31	0.49	0.55	0.54	0.48	0.48	1.05	1.59	1.21	2.10	2.47	1.26	0.32	0.26	13.16
10 - 12 ft	0.01	0.01	0.15	0.52	0.28	0.20	0.26	0.35	0.68	0.93	0.68	1.37	1.05	0.51	0.23	0.04	7.27
12 - 14 ft	•	•	0.07	0.23	0.20	0.04	0.07	0.23	0.45	0.68	0.27	0.62	0.33	0.16	0.07	0.02	3.45
14 - 16 ft	•	•	•	0.22	0.04	0.06	0.07	0.11	0.41	0.31	0.15	0.20	0.07	•	•	0.01	1.65
16 - 18 ft	•	•	•	0.09	0.01	0.01	0.04	0.04	0.22	0.20	•	0.01	•	•	•	•	0.61
> 18 ft	•	•	•	•	0.02	•	0.01	0.09	0.13	0.11	•	•	•	•	•	•	0.37
Total	1.12	0.93	5.59	4.17	5.54	4.60	5.20	3.86	7.47	12.52	8.70	13.96	10.74	8.25	4.82	2.51	100.00

OCS A-0522 Climatological WavePeriod Rose for January: 1979 - 2015

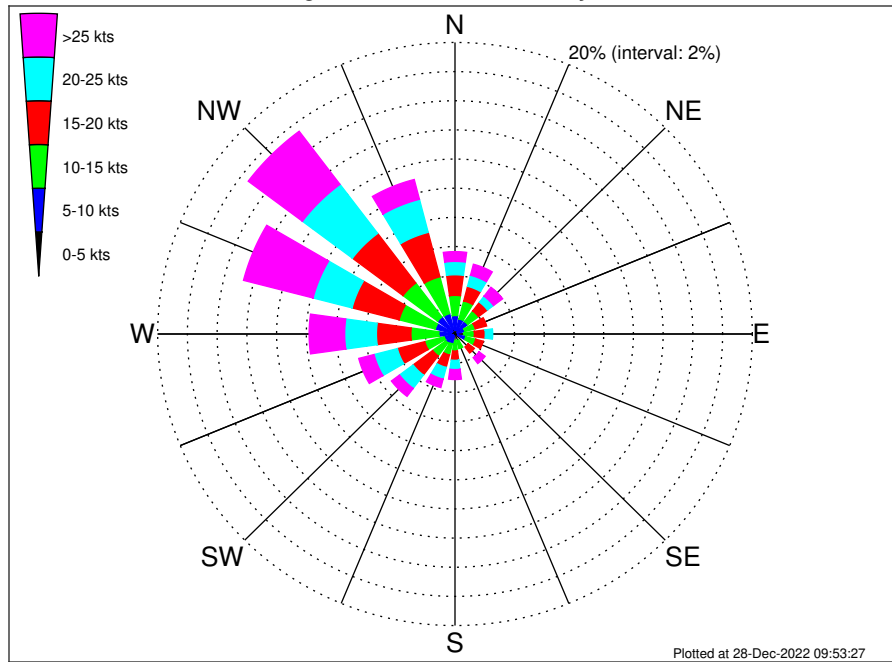


Joint Frequency Distribution Table

	N	NNE	NE	ENE	E	ESE	SE	SSE	S	SSW	SW	WSW	W	WNW	NW	NNW	Total
calm	•	•	•	•	•	•	•	•	•	•	•	•	•	•	•	•	•
1 - 2 sec	•	•	•	•	•	•	•	•	•	•	•	•	•	•	•	•	•
2 - 4 sec	0.22	0.13	0.13	0.23	0.32	0.31	0.32	0.23	0.17	0.18	0.20	0.40	0.26	0.27	0.40	0.46	4.24
4 - 6 sec	0.84	0.71	1.75	0.62	0.79	0.70	0.66	0.60	0.82	1.01	2.51	5.59	4.87	5.57	3.97	1.94	32.94
6 - 8 sec	0.06	0.09	3.32	1.44	0.92	0.82	0.93	1.06	2.06	4.59	4.74	7.03	5.57	2.42	0.45	0.11	35.59
8 - 10 sec	•	•	0.39	1.82	2.21	1.28	1.38	1.35	3.22	5.16	1.24	0.94	0.05	•	•	•	19.05
10 - 12 sec	•	•	•	0.06	1.31	1.35	1.79	0.50	1.10	1.53	0.01	•	•	•	•	•	7.65
12 - 14 sec	•	•	•	•	•	0.15	0.09	0.11	0.10	0.05	•	•	•	•	•	•	0.49
14 - 16 sec	•	•	•	•	•	•	0.04	•	•	•	•	•	•	•	•	•	0.04
18 - 20 sec	•	•	•	•	•	•	•	•	•	•	•	•	•	•	•	•	•
22 - 24 sec	•	•	•	•	•	•	•	•	•	•	•	•	•	•	•	•	•
Total	1.12	0.93	5.59	4.17	5.54	4.60	5.20	3.86	7.47	12.52	8.70	13.96	10.74	8.25	4.82	2.51	100.00



OCS A-0522 Climatological Wind Rose for January: 1979 - 2015



Joint Frequency Distribution Table

	N	NNE	NE	ENE	E	ESE	SE	SSE	S	SSW	SW	WSW	W	WNW	NW	NNW	Total
calm	•	0.01	0.01	•	•	•	•	•	•	•	•	0.01	•	•	•	0.04	0.07
0 - 5 kts	0.28	0.26	0.24	0.17	0.18	0.20	0.18	0.13	0.13	0.16	0.22	0.13	0.27	0.28	0.22	0.32	3.38
5 - 10 kts	0.99	0.81	0.82	0.51	0.41	0.55	0.48	0.34	0.31	0.54	0.55	0.61	0.82	1.09	1.24	1.09	11.14
10 - 15 kts	1.38	1.27	0.90	0.72	0.71	0.70	0.45	0.56	0.73	0.79	1.11	1.34	1.88	2.51	2.92	2.61	20.59
15 - 20 kts	1.42	1.04	0.76	0.79	0.73	0.52	0.52	0.49	0.63	0.88	1.65	1.90	2.32	3.27	4.26	3.15	24.34
20 - 25 kts	0.92	0.78	0.51	0.38	0.50	0.27	0.39	0.49	0.63	0.83	1.15	1.62	2.14	2.71	4.21	2.34	19.87
25 - 30 kts	0.37	0.31	0.44	0.22	0.24	0.26	0.38	0.24	0.35	0.45	0.54	0.62	1.40	2.86	2.92	1.04	12.63
30 - 35 kts	0.18	0.18	0.15	0.12	0.07	0.10	0.11	0.13	0.15	0.10	0.11	0.32	0.84	1.59	1.31	0.32	5.77
35 - 40 kts	0.09	0.13	0.10	0.07	0.06	0.01	0.02	0.06	0.15	0.04	0.02	0.10	0.13	0.34	0.33	0.04	1.70
40 - 45 kts	0.02	0.12	0.06	0.02	0.01	•	•	•	0.04	0.01	0.01	0.01	0.01	0.05	•	0.01	0.39
45 - 50 kts	0.01	0.04	0.02	0.01	•	•	•	•	•	•	•	0.01	•	•	0.01	•	0.11
Total	5.65	4.94	4.02	3.03	2.93	2.60	2.54	2.45	3.12	3.80	5.36	6.69	9.81	14.70	17.42	10.95	100.00