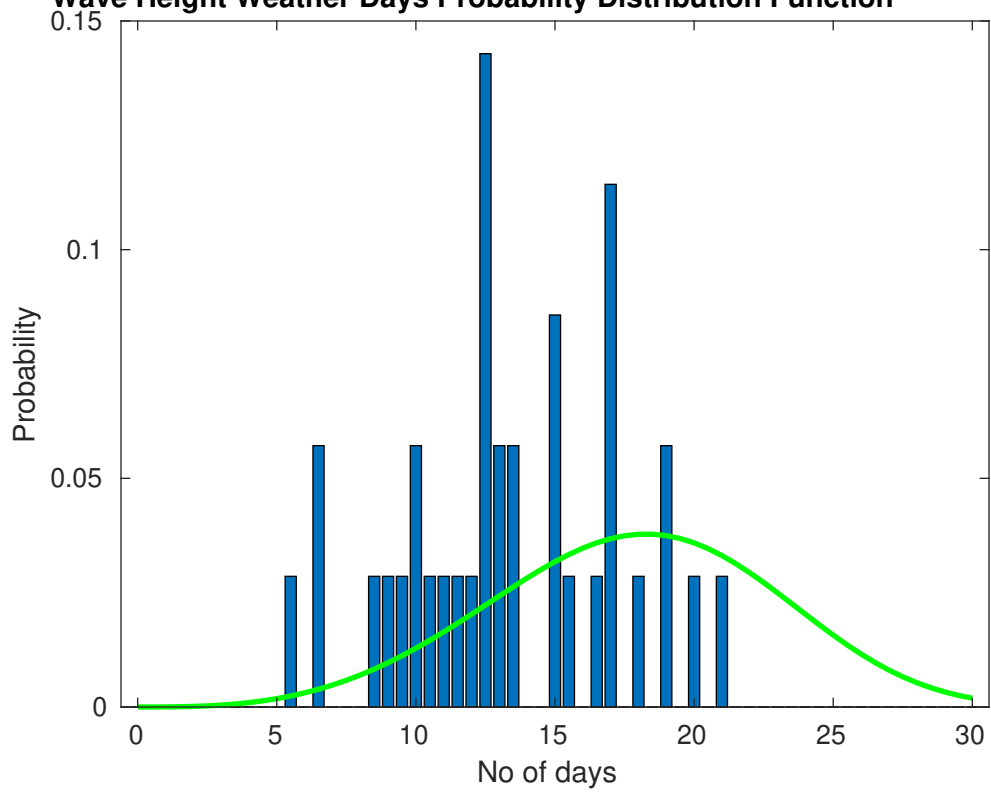
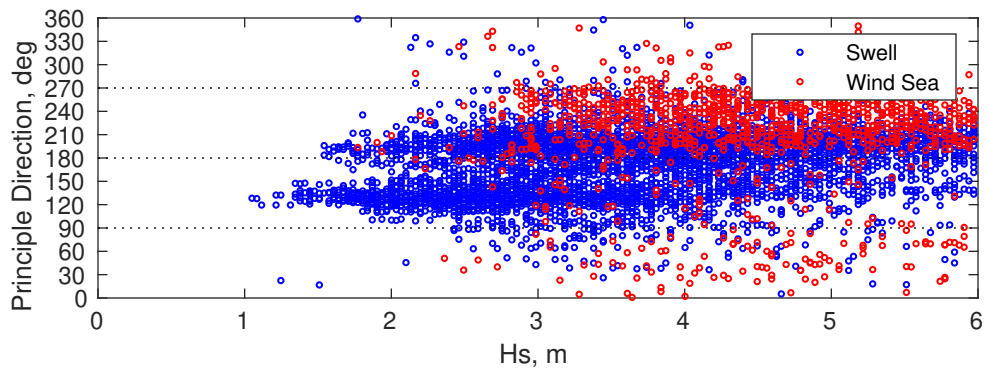
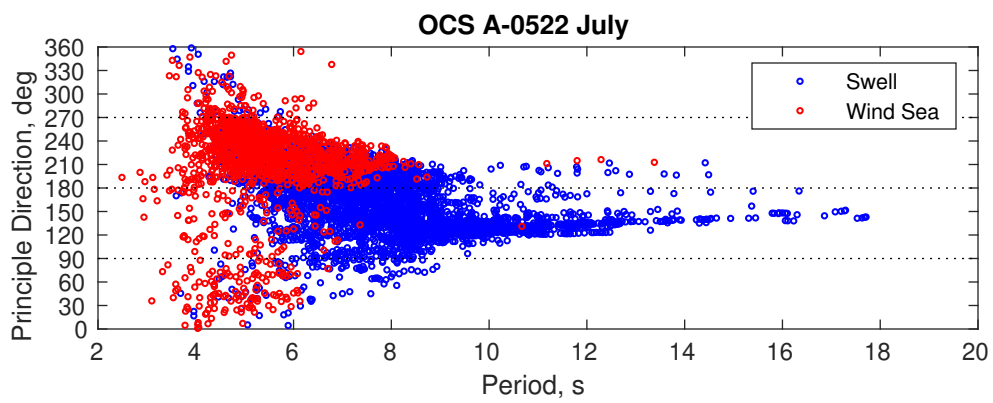
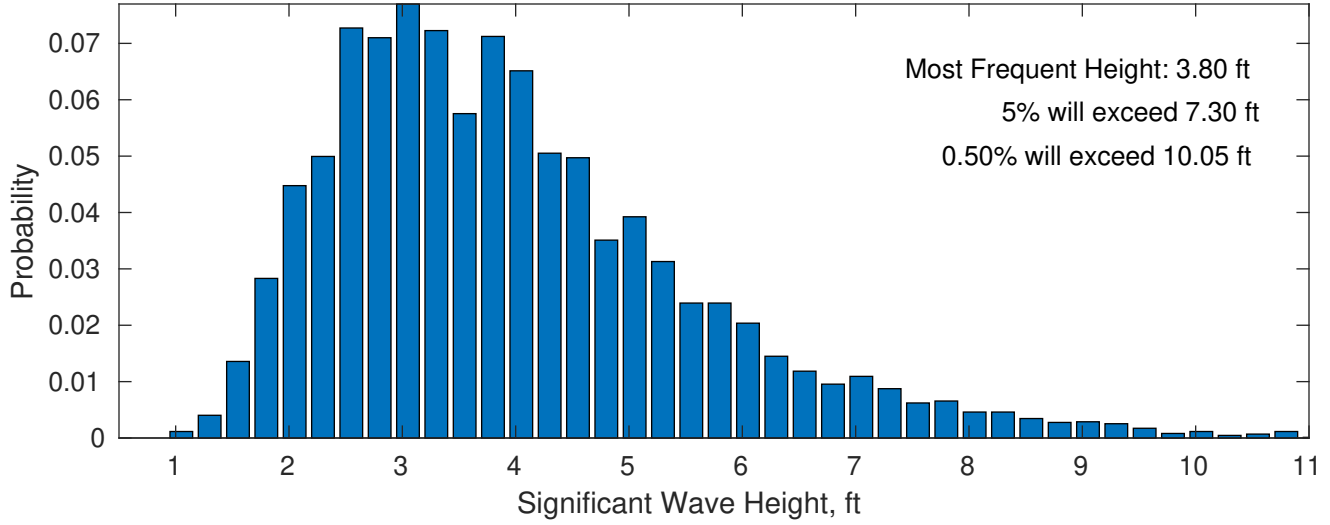


Wave Height Weather Days Probability Distribution Function

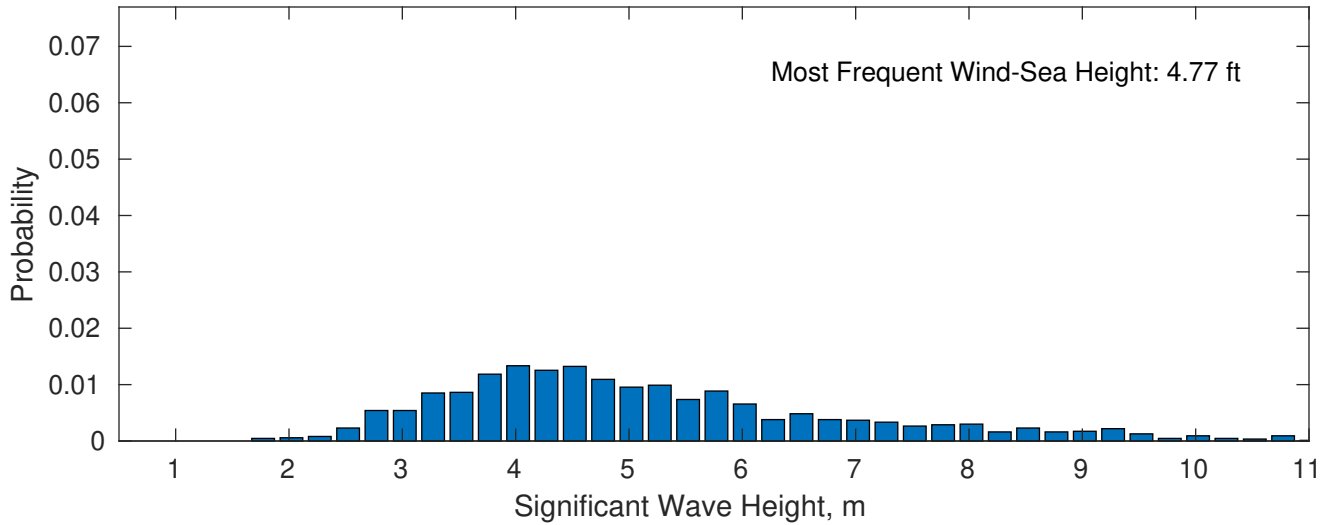




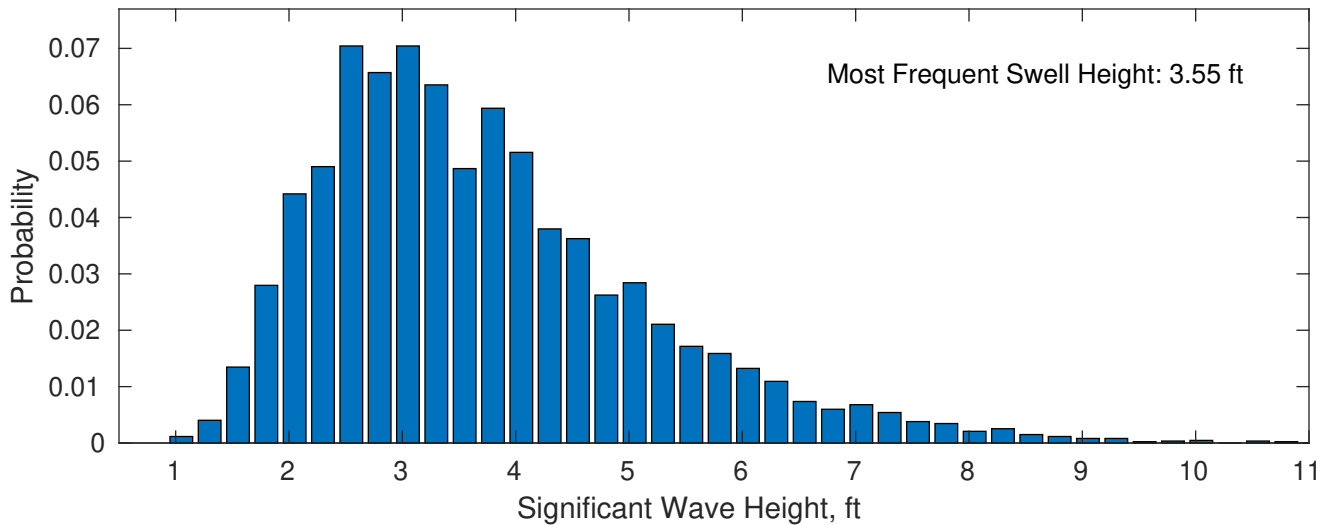
July Wave Height PDF: 1979 - 2015



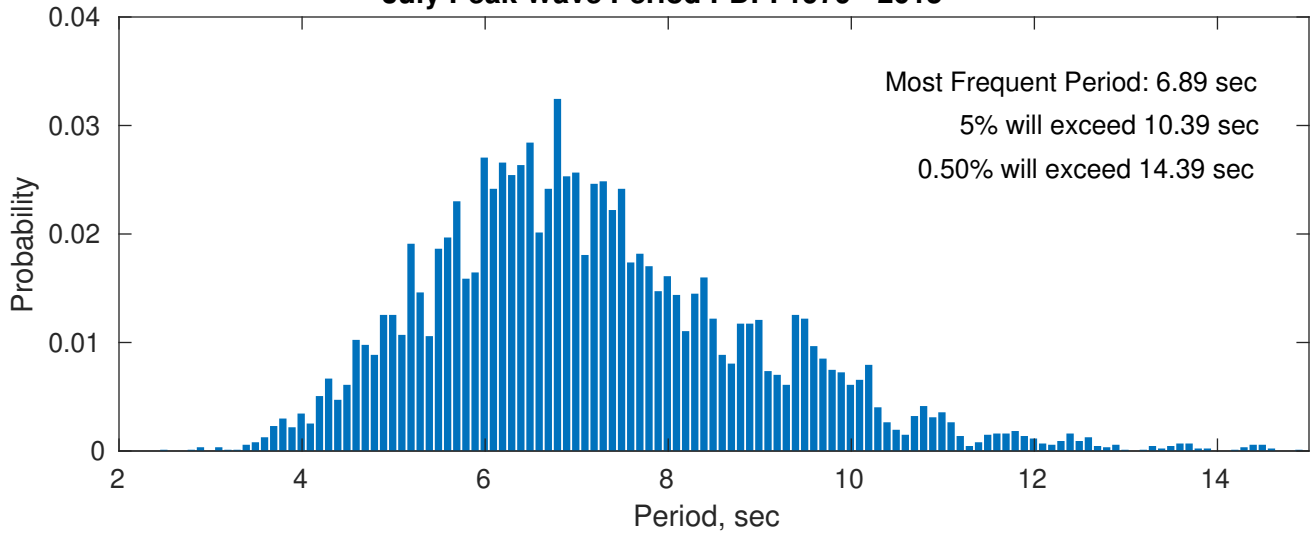
Wind-Sea: 17.94%



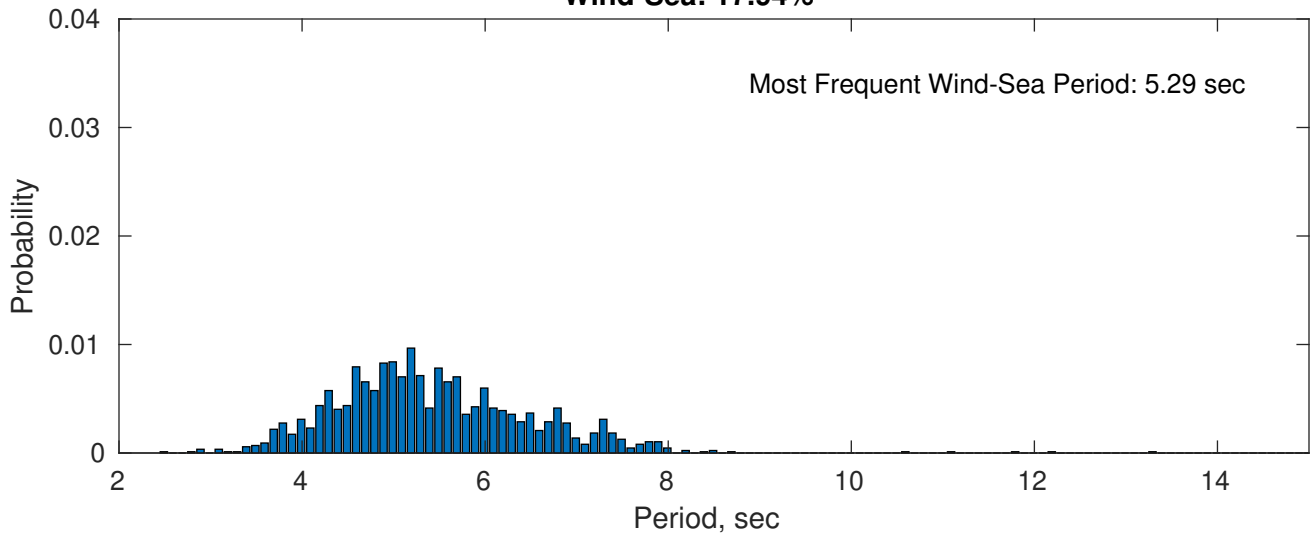
Swell: 82.06%



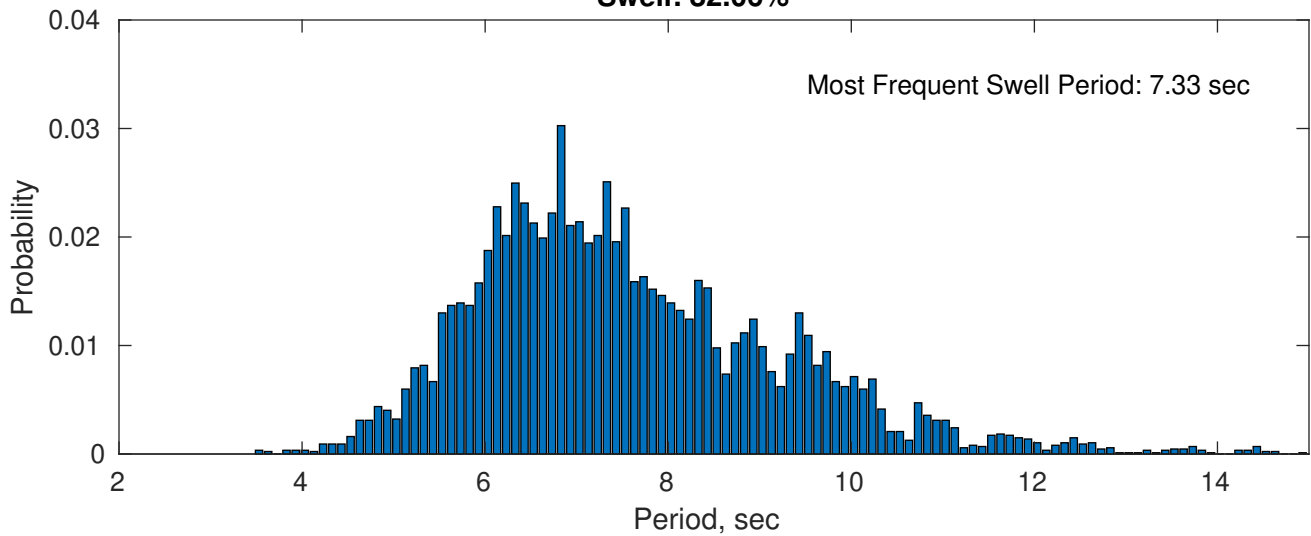
July Peak Wave Period PDF: 1979 - 2015



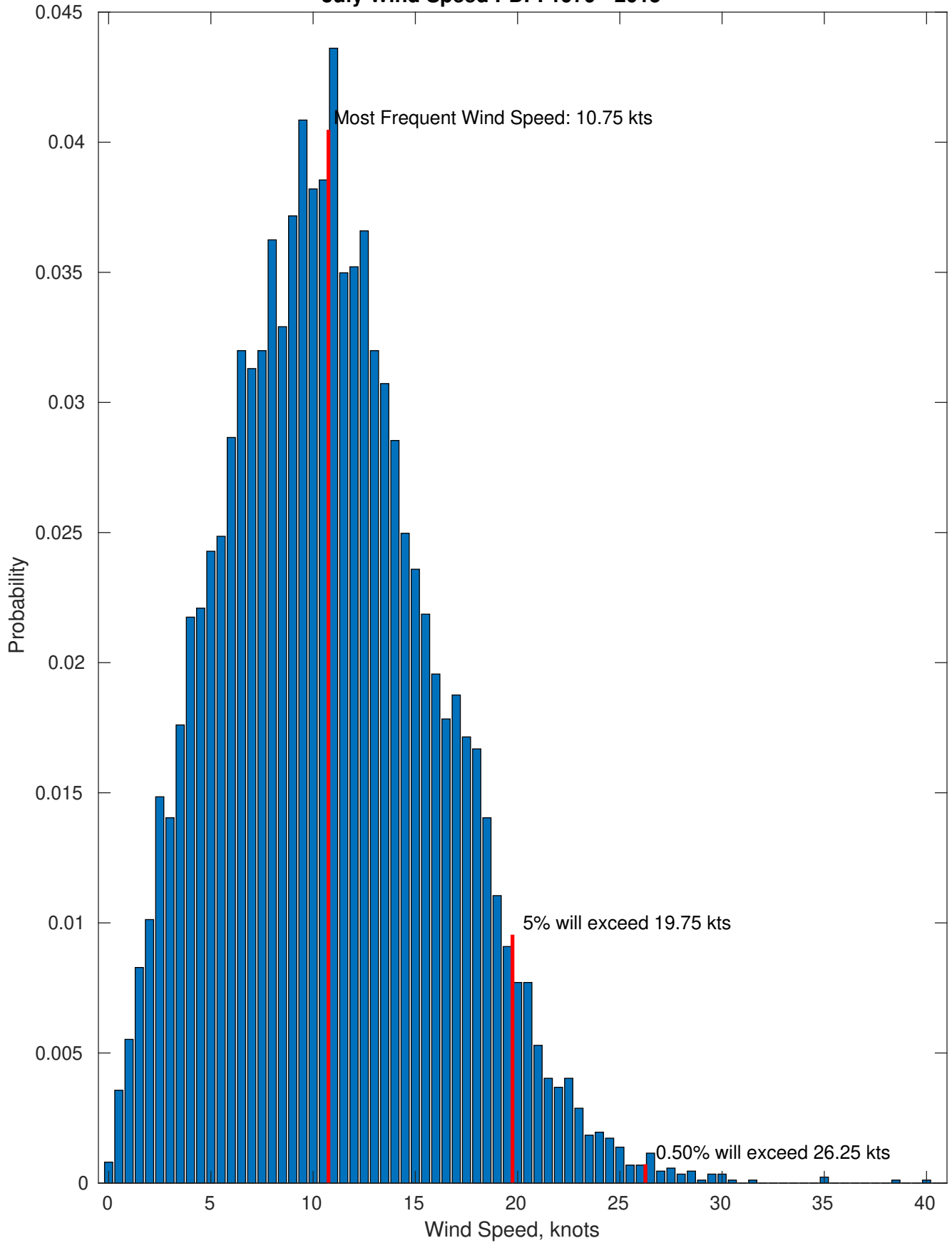
Wind-Sea: 17.94%



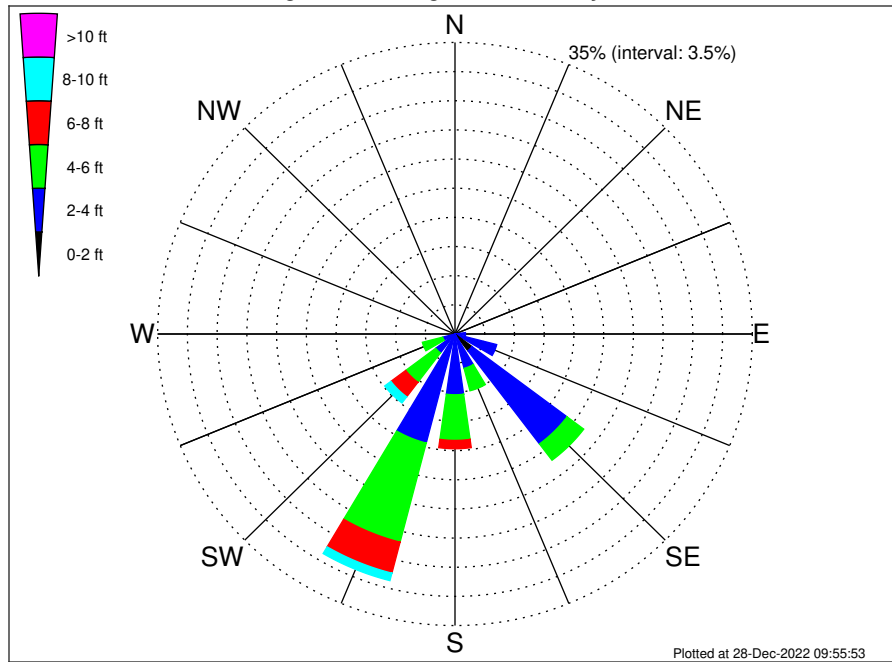
Swell: 82.06%



July Wind Speed PDF: 1979 - 2015



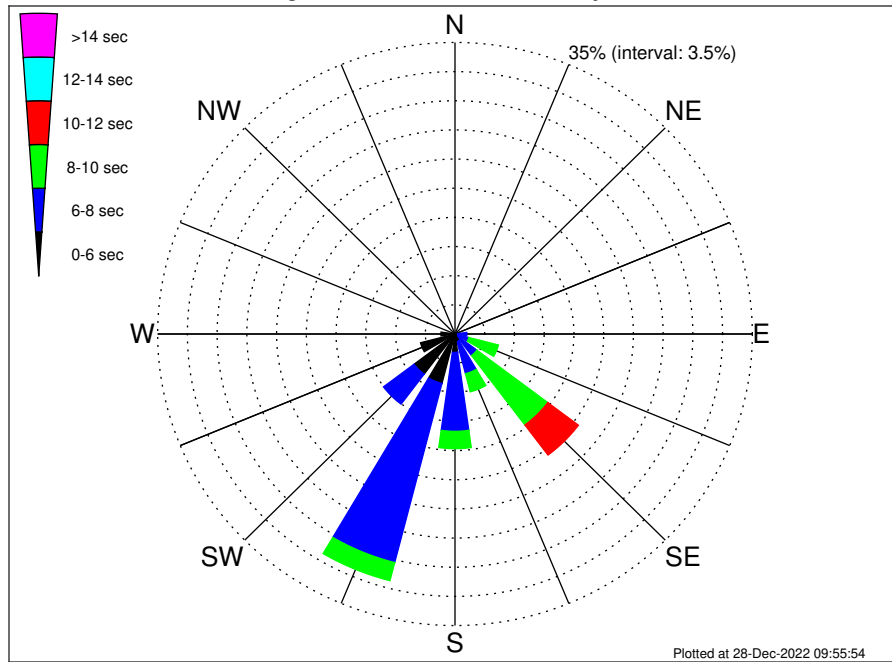
OCS A-0522 Climatological WaveHeight Rose for July: 1979 - 2015



Joint Frequency Distribution Table

	N	NNE	NE	E	ESE	SE	SSE	S	SSW	SW	WSW	W	WNW	NW	NNW	Total
calm	•	•	•	•	•	•	•	•	•	•	•	•	•	•	•	•
1 - 2 ft	0.01	0.02	•	•	0.03	0.47	2.51	0.13	0.35	0.32	0.01	•	•	•	•	3.86
2 - 4 ft	0.06	0.08	0.30	0.46	1.21	4.60	14.02	4.13	6.95	13.20	2.83	1.50	0.87	0.16	0.16	50.62
4 - 6 ft	0.07	0.18	0.38	0.45	0.55	0.77	2.45	2.78	5.48	12.29	4.42	2.47	0.72	0.17	0.10	33.31
6 - 8 ft	0.01	0.06	0.13	0.05	0.05	0.10	0.30	0.67	1.00	3.84	2.19	0.66	0.08	0.05	•	9.17
8 - 10 ft	0.01	•	•	•	0.01	0.05	0.06	0.07	0.20	0.93	0.92	0.15	0.01	0.02	•	2.44
10 - 12 ft	•	•	•	•	•	•	•	•	0.16	0.29	0.02	•	•	•	•	0.47
12 - 14 ft	•	•	•	•	•	•	•	0.02	0.03	•	•	•	•	•	•	0.06
14 - 16 ft	•	•	•	•	•	•	•	•	0.02	•	•	•	•	•	•	0.02
16 - 18 ft	•	•	•	•	•	•	•	•	0.01	•	•	•	•	•	•	0.01
> 18 ft	•	•	•	•	•	•	•	•	0.01	0.02	•	•	•	•	•	0.03
Total	0.16	0.35	0.81	0.96	1.85	6.00	19.33	7.78	13.99	30.83	10.68	4.80	1.69	0.40	0.12	100.00

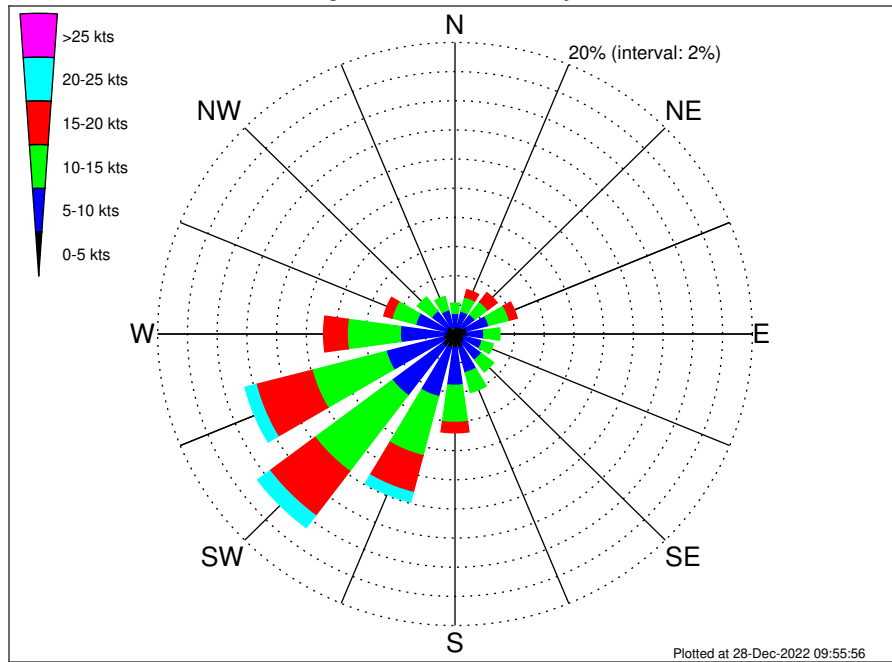
OCS A-0522 Climatological WavePeriod Rose for July: 1979 - 2015



Joint Frequency Distribution Table

	N	NNE	NE	E	ESE	SE	SSE	S	SSW	SW	WSW	W	WNW	NW	NNW	Total	
calm	•	•	•	•	•	•	•	•	•	•	•	•	•	•	•	•	
1 - 2 sec	•	•	•	•	•	•	•	•	•	•	•	•	•	•	•	•	
2 - 4 sec	0.03	0.06	0.08	0.06	0.02	0.05	0.06	0.03	0.23	0.13	0.09	0.14	0.05	0.01	0.05	0.07	1.15
4 - 6 sec	0.12	0.28	0.56	0.47	0.30	0.36	0.41	0.91	1.98	6.01	5.95	4.05	1.61	0.33	0.22	0.03	23.59
6 - 8 sec	0.01	0.01	0.15	0.35	1.07	1.29	2.76	3.98	9.47	22.21	4.50	0.61	0.03	0.06	•	0.01	46.51
8 - 10 sec	•	•	0.01	0.08	0.46	3.59	10.45	2.24	2.08	2.24	0.12	•	•	•	•	•	21.28
10 - 12 sec	•	•	•	•	•	0.63	4.51	0.26	0.16	0.14	0.01	•	•	•	•	•	5.72
12 - 14 sec	•	•	•	•	•	0.08	0.84	0.10	0.03	0.08	0.01	•	•	•	•	•	1.15
14 - 16 sec	•	•	•	•	•	•	0.18	0.12	0.02	0.02	•	•	•	•	•	•	0.35
18 - 20 sec	•	•	•	•	•	•	0.12	0.13	0.01	•	•	•	•	•	•	•	0.25
22 - 24 sec	•	•	•	•	•	•	•	•	•	•	•	•	•	•	•	•	•
Total	0.16	0.35	0.81	0.96	1.85	6.00	19.33	7.78	13.99	30.83	10.68	4.80	1.69	0.40	0.26	0.12	100.00

OCS A-0522 Climatological Wind Rose for July: 1979 - 2015



Joint Frequency Distribution Table

	N	NNE	NE	ENE	E	ESE	SE	SSE	S	SSW	SW	WSW	W	WNW	NW	NNW	Total
calm	0.01	•	0.05	0.03	0.06	0.02	0.07	0.01	0.03	0.05	0.02	0.03	0.01	0.01	0.02	•	0.44
0 - 5 kts	0.51	0.53	0.52	0.78	0.77	0.60	0.69	0.97	0.92	0.94	1.02	0.76	0.68	0.62	0.63	0.48	11.43
5 - 10 kts	0.90	1.08	1.10	1.53	1.12	1.27	1.45	1.76	2.57	3.44	4.22	3.98	2.99	2.09	1.30	1.22	32.03
10 - 15 kts	0.71	1.01	1.09	1.43	1.08	0.77	1.05	1.40	2.54	4.19	6.51	5.16	3.57	1.66	1.21	0.96	34.34
15 - 20 kts	0.30	0.52	0.79	0.55	0.26	0.24	0.25	0.26	0.71	2.61	3.81	3.89	1.59	0.56	0.38	0.22	16.96
20 - 25 kts	0.14	0.13	0.16	0.15	0.01	0.09	0.07	0.07	0.28	0.68	1.04	0.77	0.22	0.10	0.13	0.06	4.09
25 - 30 kts	0.02	0.03	0.01	0.05	0.01	0.05	0.01	0.03	0.01	0.08	0.10	0.13	0.03	•	0.05	•	0.62
30 - 35 kts	0.01	•	0.01	•	0.02	•	•	•	•	•	•	•	0.01	•	•	•	0.06
35 - 40 kts	•	•	•	•	•	•	•	•	0.01	0.01	0.01	•	•	•	•	•	0.03
40 - 45 kts	•	•	•	•	•	•	•	•	•	•	•	•	•	•	0.01	•	0.01
45 - 50 kts	•	•	•	•	•	•	•	•	•	•	•	•	•	•	•	•	•
Total	2.60	3.30	3.74	4.52	3.34	3.04	3.59	4.51	7.08	12.00	16.74	14.72	9.10	5.05	3.73	2.93	100.00