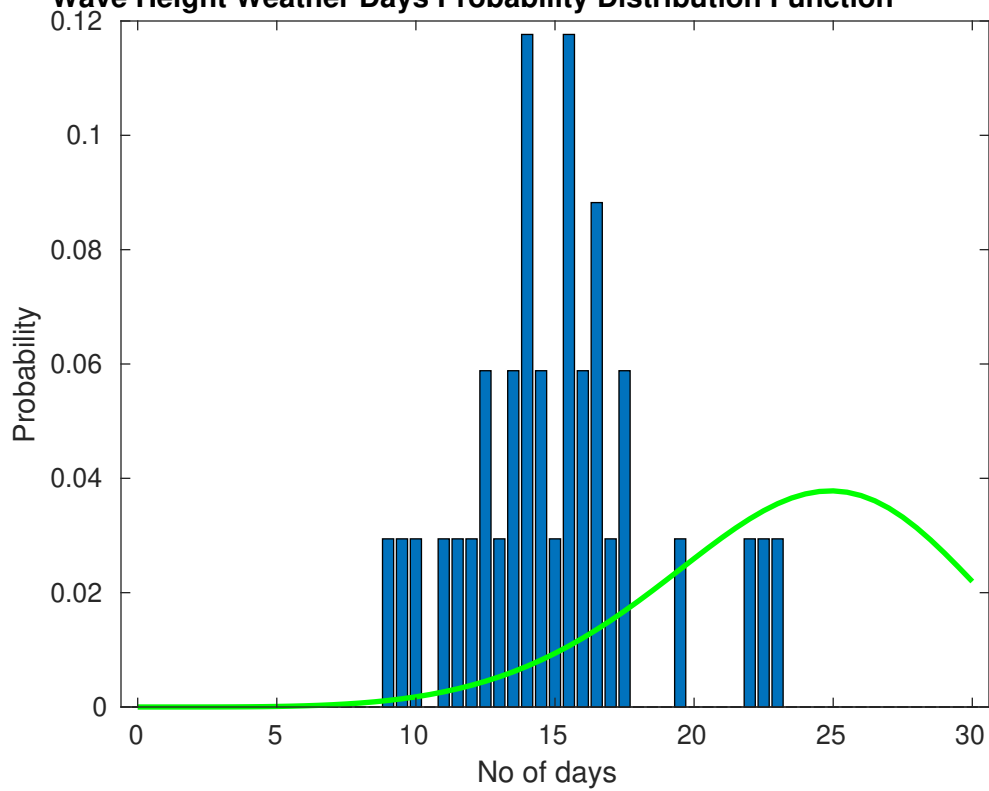
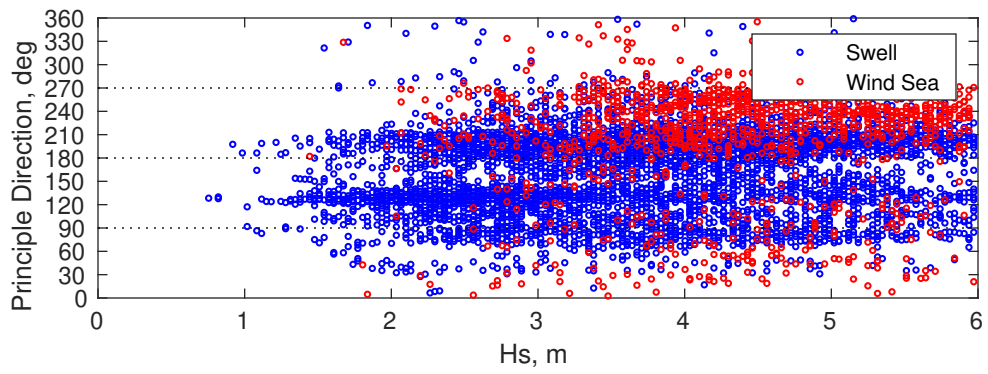
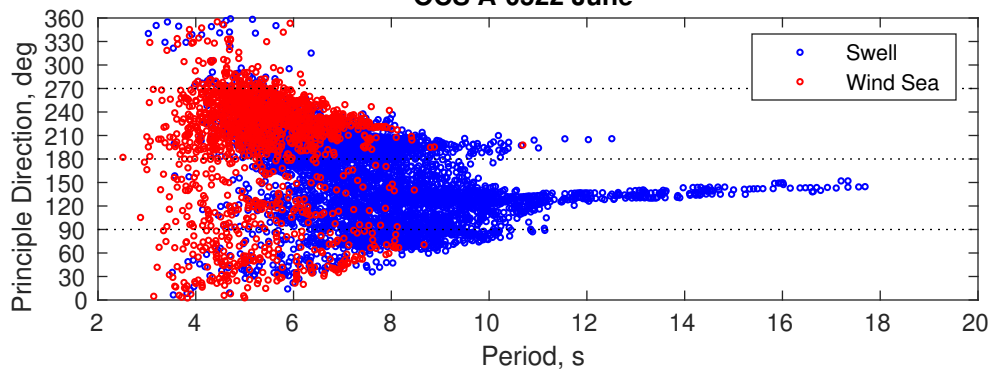




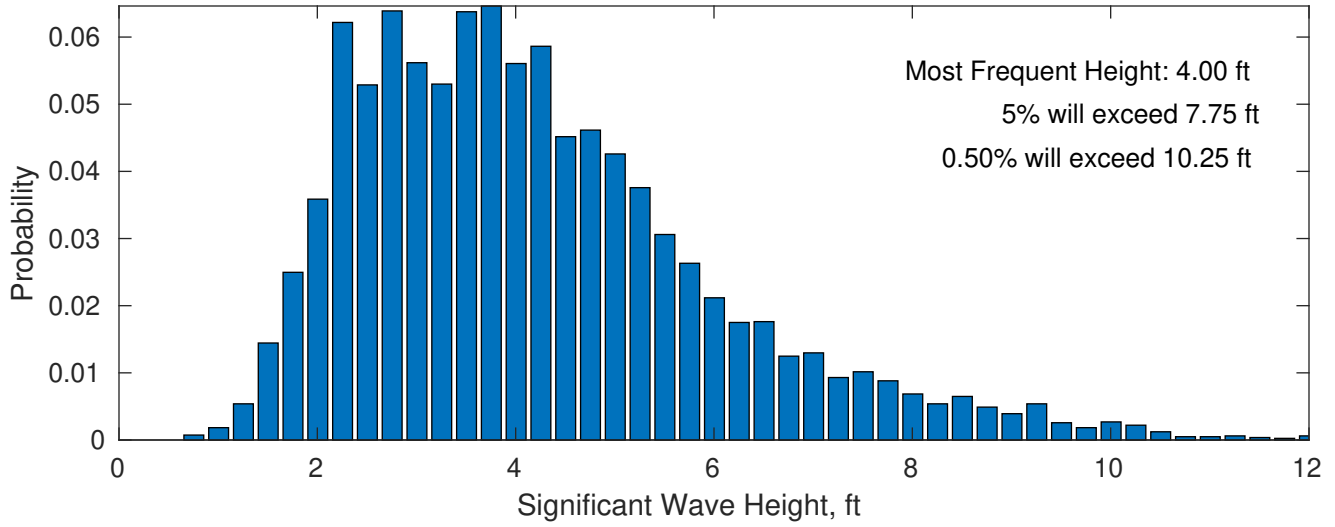
**Wave Height Weather Days Probability Distribution Function**



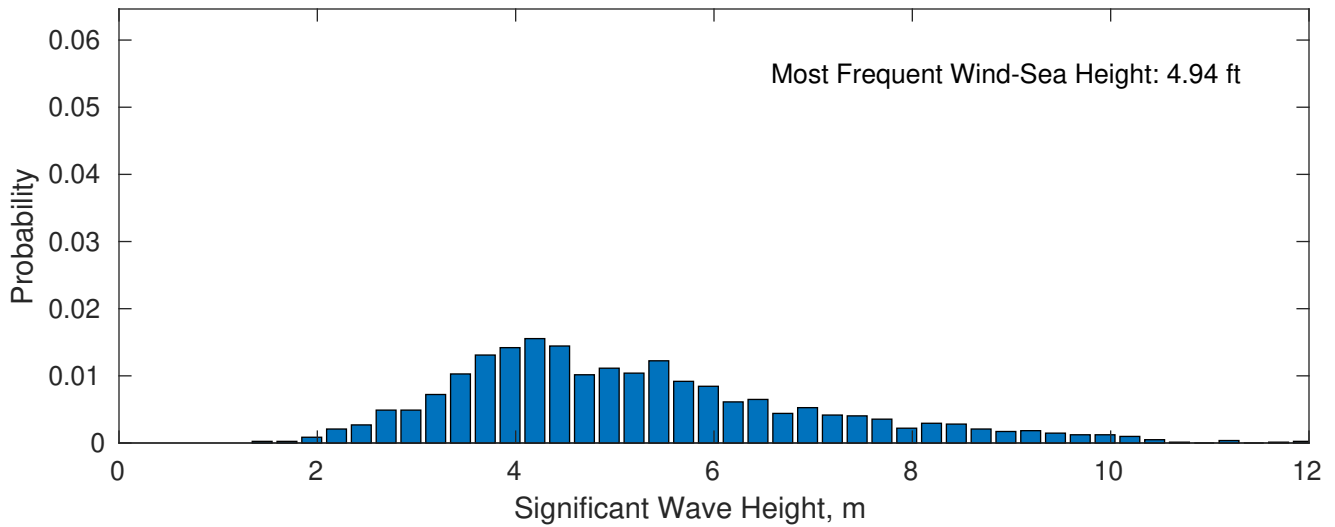
OCS A-0522 June



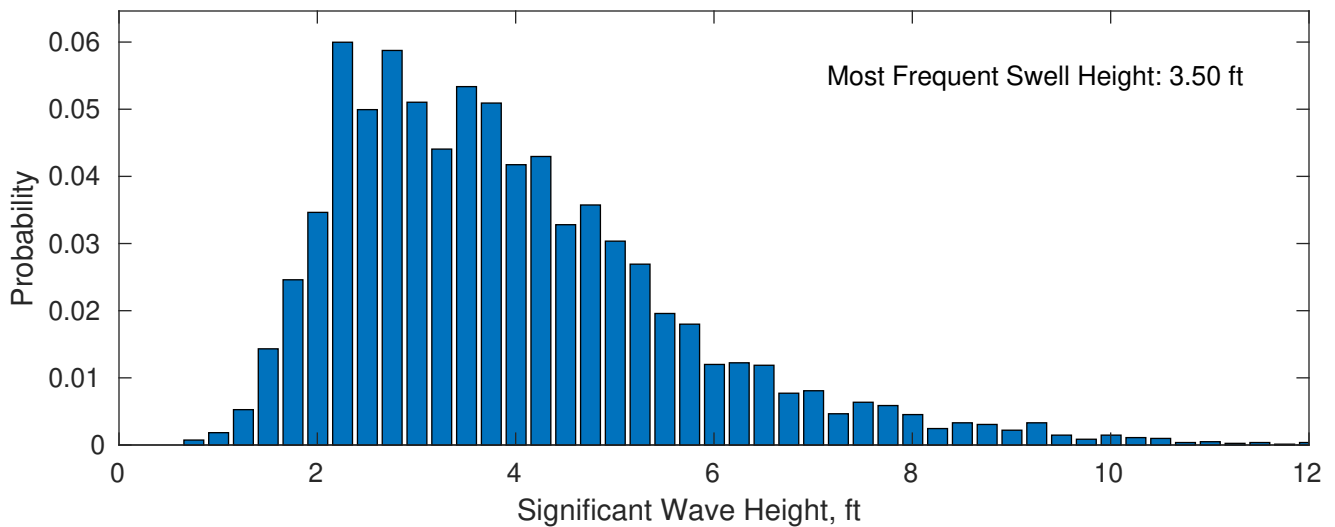
**June Wave Height PDF: 1979 - 2015**



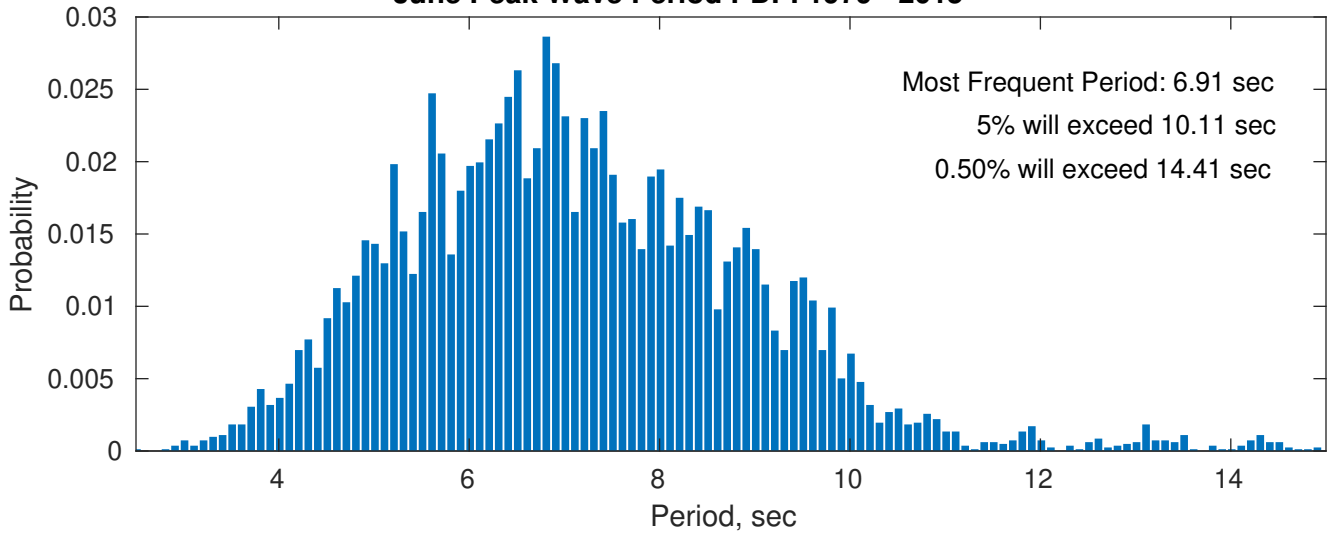
**Wind-Sea: 20.64%**



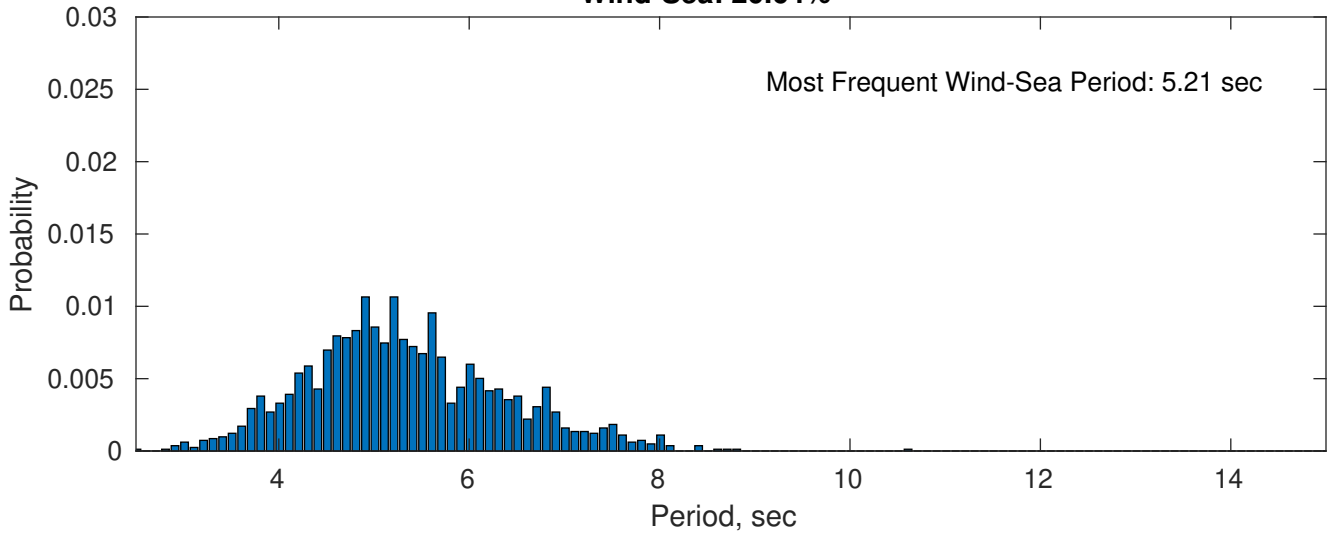
**Swell: 79.36%**



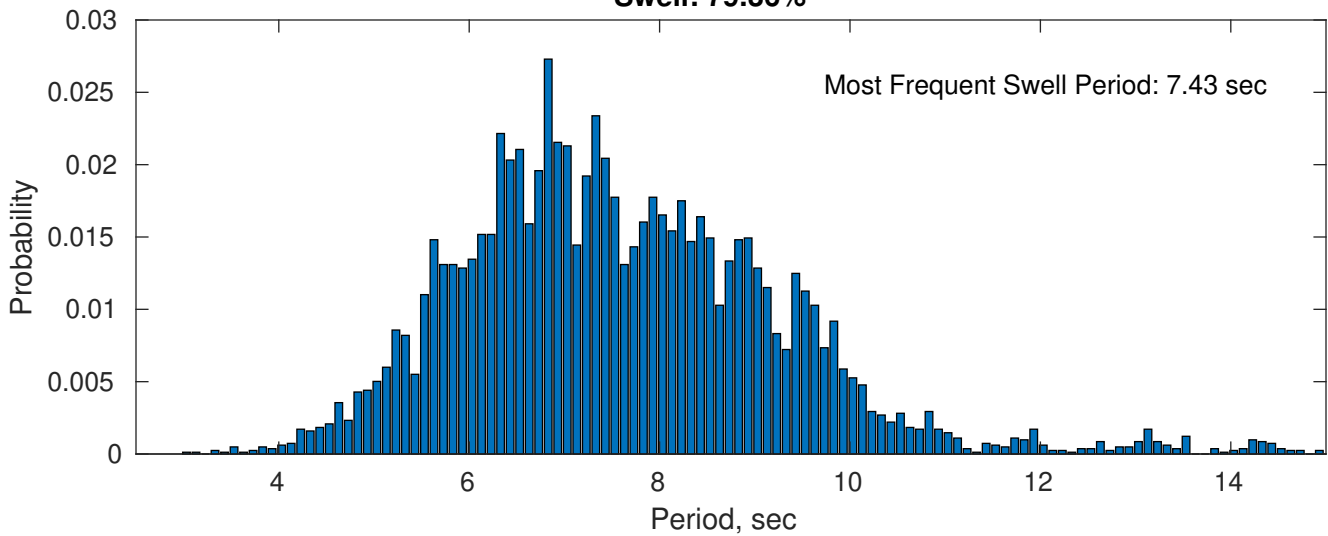
**June Peak Wave Period PDF: 1979 - 2015**



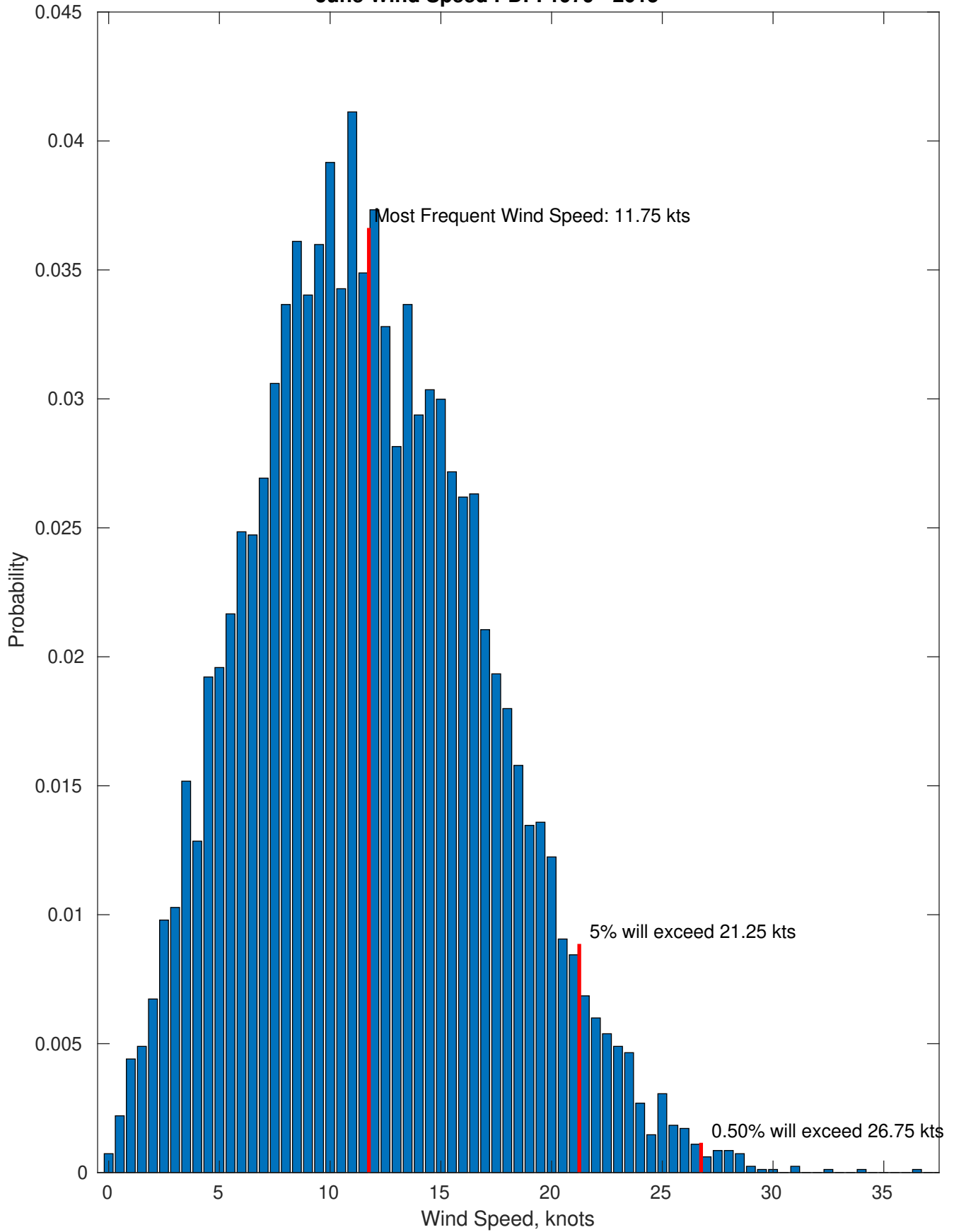
**Wind-Sea: 20.64%**



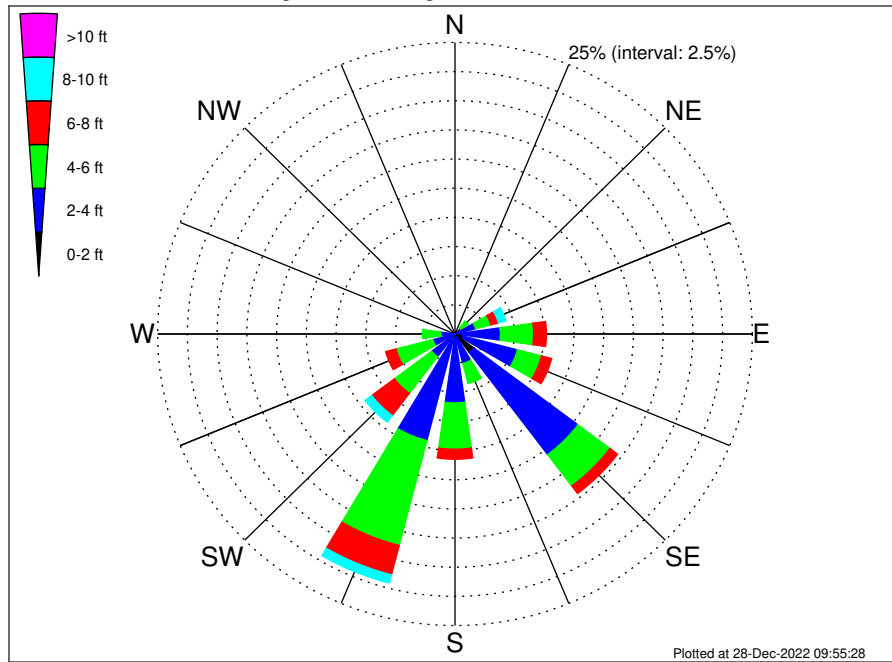
**Swell: 79.36%**



June Wind Speed PDF: 1979 - 2015



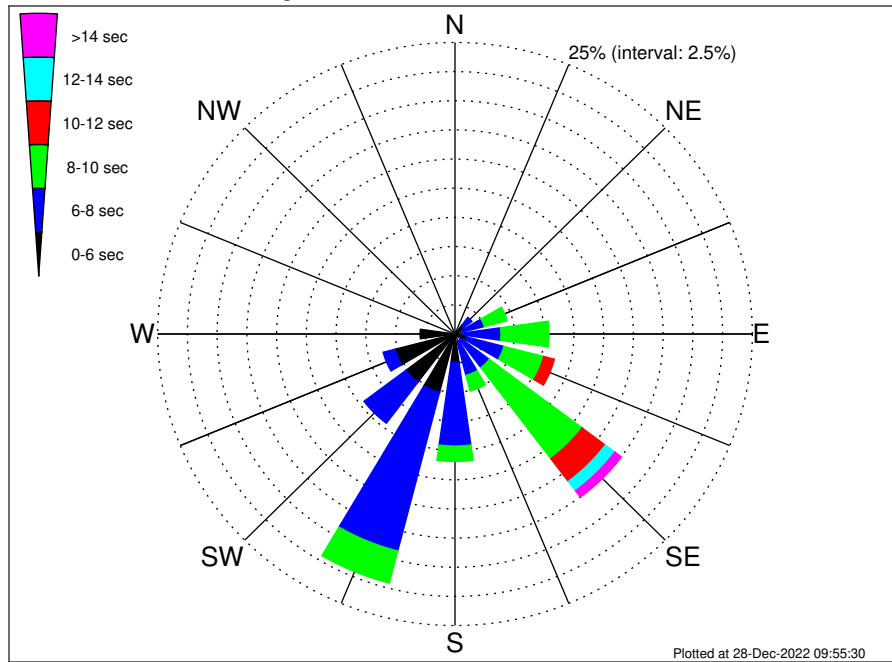
OCS A-0522 Climatological WaveHeight Rose for June: 1979 - 2015



Joint Frequency Distribution Table

	N	NNE	NE	E	ESE	SE	SSE	S	SSW	SW	WSW	W	WNW	NW	NNW	Total	
calm	•	•	•	•	•	•	0.05	•	0.01	0.01	•	•	•	•	•	0.07	
1 - 2 ft	0.02	•	0.11	0.16	0.26	0.66	1.95	0.26	0.28	0.53	0.02	•	0.04	•	0.01	0.02	4.32
2 - 4 ft	0.16	0.29	0.56	1.63	3.56	4.76	10.95	2.35	5.62	8.90	2.42	1.92	1.15	0.17	0.10	0.17	44.72
4 - 6 ft	0.06	0.28	0.71	1.32	2.79	2.09	3.37	1.77	3.97	9.29	3.93	3.19	1.55	0.24	0.07	0.09	34.74
6 - 8 ft	0.02	0.16	0.21	0.66	1.08	0.88	0.81	0.56	0.86	2.59	2.39	0.91	0.26	0.04	•	0.01	11.43
8 - 10 ft	0.02	0.01	0.17	0.66	0.49	0.17	0.33	0.10	0.15	0.73	0.70	0.17	•	0.01	•	0.01	3.73
10 - 12 ft	•	•	0.04	0.10	0.10	0.06	0.06	0.09	0.06	0.12	0.17	0.04	•	•	•	•	0.83
12 - 14 ft	•	•	•	•	•	•	•	•	0.05	0.04	0.01	0.02	•	•	•	•	0.12
14 - 16 ft	•	•	•	•	•	•	•	•	•	0.02	•	•	•	•	•	•	0.02
16 - 18 ft	•	•	•	•	•	•	•	•	•	•	•	•	•	•	•	•	•
> 18 ft	•	•	•	•	•	•	•	•	•	•	•	•	•	•	•	•	•
Total	0.29	0.75	1.80	4.53	8.27	8.63	17.52	5.13	10.99	22.24	9.65	6.25	3.00	0.47	0.18	0.31	100.00

OCS A-0522 Climatological WavePeriod Rose for June: 1979 - 2015

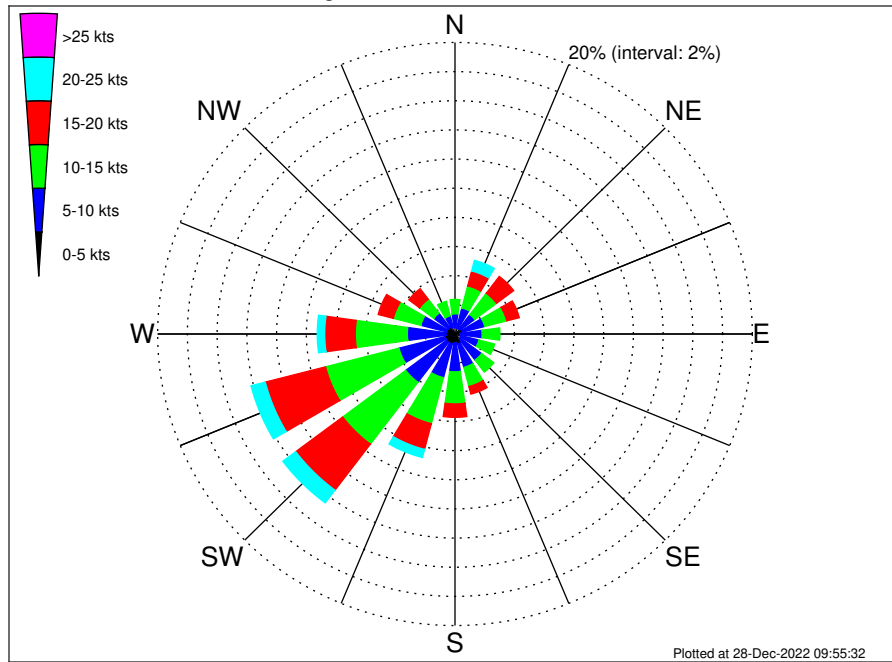


Joint Frequency Distribution Table

	N	NNE	NE	ENE	E	ENE	SE	SSE	S	SSW	SW	WSW	W	WNW	NW	NNW	Total
calm	•	•	•	•	•	•	•	•	•	•	•	•	•	•	•	•	•
1 - 2 sec	•	•	•	•	•	•	•	•	•	•	•	•	•	•	•	•	•
2 - 4 sec	0.12	0.15	0.09	0.10	0.09	0.06	0.09	0.13	0.12	0.29	0.17	0.18	0.10	0.01	0.04	0.13	1.87
4 - 6 sec	0.17	0.49	0.83	0.60	0.51	0.98	0.55	0.53	2.29	4.86	4.99	5.02	2.84	0.44	0.13	0.17	25.41
6 - 8 sec	•	0.11	0.87	1.85	3.27	3.21	2.97	3.00	7.20	14.06	4.42	1.04	0.06	0.01	0.01	•	42.08
8 - 10 sec	•	•	0.01	1.98	4.04	3.45	9.78	1.38	1.32	2.84	0.06	0.01	•	•	•	•	24.88
10 - 12 sec	•	•	•	•	0.37	0.93	2.44	•	0.06	0.16	•	•	•	•	•	•	3.95
12 - 14 sec	•	•	•	•	•	•	1.00	•	•	0.02	•	•	•	•	•	•	1.03
14 - 16 sec	•	•	•	•	•	•	0.51	0.04	•	•	•	•	•	•	•	•	0.55
18 - 20 sec	•	•	•	•	•	•	0.17	0.05	•	•	•	•	•	•	•	•	0.22
22 - 24 sec	•	•	•	•	•	•	•	•	•	•	•	•	•	•	•	•	•
Total	0.29	0.75	1.80	4.53	8.27	8.63	17.52	5.13	10.99	22.24	9.65	6.25	3.00	0.47	0.18	0.31	100.00



OCS A-0522 Climatological Wind Rose for June: 1979 - 2015



Joint Frequency Distribution Table

	N	NNE	NE	ENE	E	ESE	SE	SSE	S	SSW	SW	WSW	W	WNW	NW	NNW	Total
calm	•	0.01	0.01	•	•	•	0.01	0.04	0.01	0.01	0.04	0.01	0.05	0.04	0.02	0.04	0.29
0 - 5 kts	0.44	0.42	0.40	0.51	0.33	0.42	0.43	0.67	0.59	0.69	0.69	0.69	0.56	0.54	0.55	0.42	8.34
5 - 10 kts	0.94	1.42	1.25	1.55	1.49	1.25	1.80	1.65	2.00	2.40	3.43	3.19	2.59	1.80	1.21	0.83	28.81
10 - 15 kts	0.99	1.57	1.84	1.53	1.20	1.09	1.03	1.36	2.20	3.26	5.31	5.10	3.50	1.91	1.20	1.03	34.11
15 - 20 kts	0.49	1.05	1.44	0.87	0.45	0.47	0.47	0.54	0.92	1.82	3.95	4.19	2.06	1.05	0.91	0.42	21.09
20 - 25 kts	0.29	0.75	0.33	0.26	0.23	0.23	0.17	0.21	0.17	0.58	1.09	0.99	0.50	0.20	0.10	0.07	6.17
25 - 30 kts	0.10	0.17	0.15	0.05	0.07	•	0.05	0.04	0.04	0.10	0.13	0.05	0.05	0.02	0.06	0.04	1.11
30 - 35 kts	•	0.01	0.01	•	•	0.01	•	•	•	•	•	0.02	•	•	•	•	0.06
35 - 40 kts	•	•	0.01	•	•	•	•	•	•	•	•	•	•	•	•	•	0.01
40 - 45 kts	•	•	•	•	•	•	•	•	•	•	•	•	•	•	•	•	•
45 - 50 kts	•	•	•	•	•	•	•	•	•	•	•	•	•	•	•	•	•
Total	3.26	5.40	5.45	4.77	3.78	3.46	3.95	4.50	5.92	8.85	14.64	14.25	9.31	5.56	4.05	2.84	100.00