

OCS A-0522 - March

Latitude: 40.67 N Longitude: 70.26 W

Weather Days

Wave Height > 4.0 ft Mean: 20.6 days Range: 18.2 - 22.9 days p50:21.5 days p75:20 days p90:17.5 days

Wave Height > 5.0 ft Mean: 16.1 days Range: 13.0 - 19.1 days p50:17 days p75:15 days p90:12.5 days

Wave Height > 6.0 ft Mean: 12.3 days Range: 9.0 - 15.5 days p50:13.5 days p75:10.5 days p90:8.5 days

Wind Speed > 20.0 knots Mean: 10.0 days Range: 7.4 - 12.5 days p50:10.5 days p75:8 days p90:7 days

Wind Speed > 25.0 knots Mean: 4.4 days Range: 2.3 - 6.4 days p50:4.5 days p75:3 days p90:2 days

Wind Speed > 30.0 knots Mean: 1.4 days Range: 0.3 - 2.5 days p50:1.5 days p75:0.5 days p90:0.5 days

Working Window Probability

Wave Height < 4.0 ft 3 days or longer: 13%
 5 days or longer: 1%
 7 days or longer: 0%

Wave Height < 5.0 ft 3 days or longer: 26%
 5 days or longer: 3%
 7 days or longer: 1%

Wave Height < 6.0 ft 3 days or longer: 36%
 5 days or longer: 7%
 7 days or longer: 3%

Waves

Mean Height: 4 - 6 ft

The wave heights will occasionally reach 16 - 18 ft, but rarely higher.

Mean Period: 6 - 8 sec

The wave periods will occasionally reach 12 - 14 sec, but rarely longer.

Principle Direction, from: SSW

WindSea/Swell: 36% / 64%

Winds

Mean Speed: 15 - 20 kts

The winds will occasionally reach 35 - 40 kts, but rarely greater.

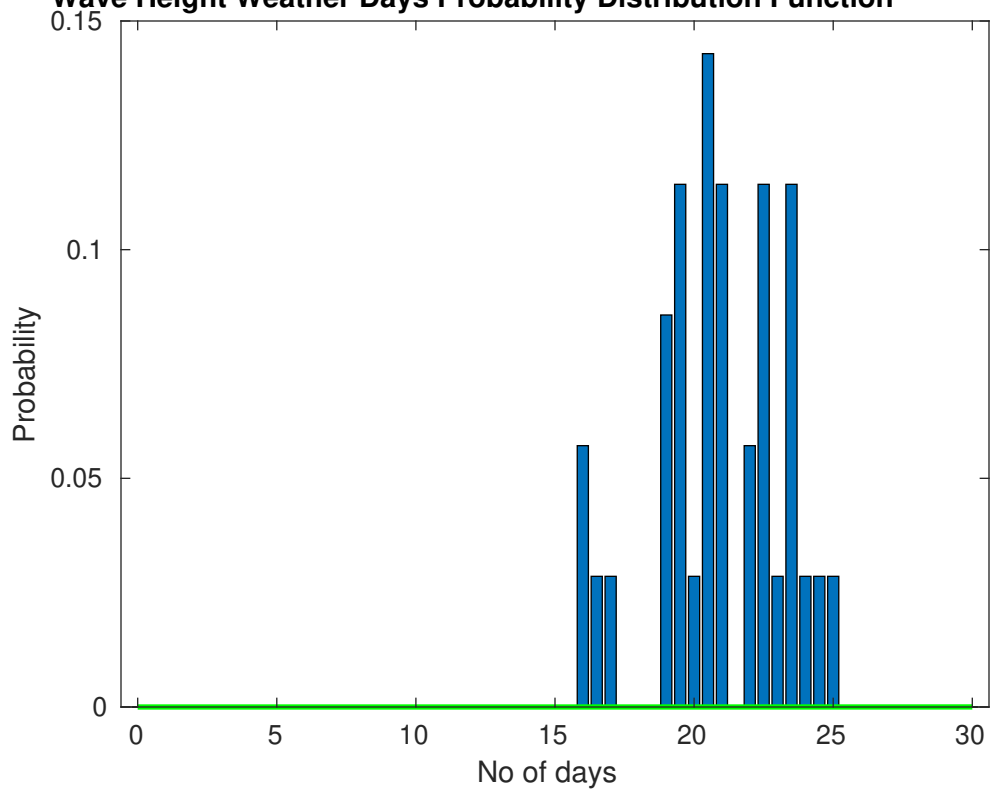
Principle Direction, from: NW

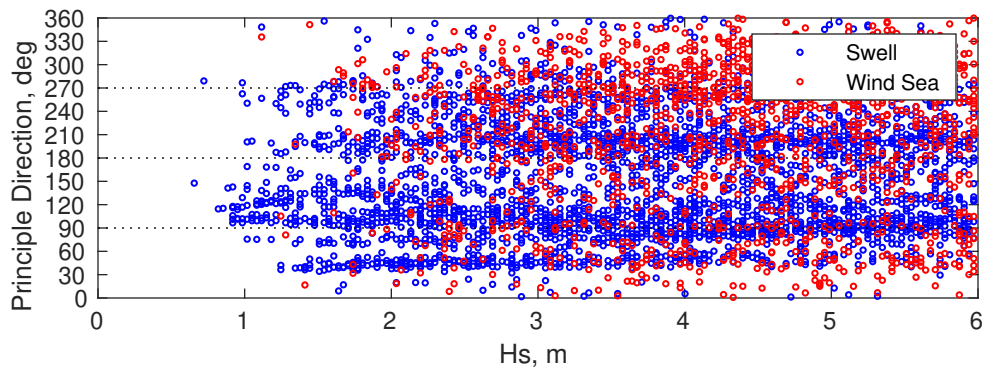
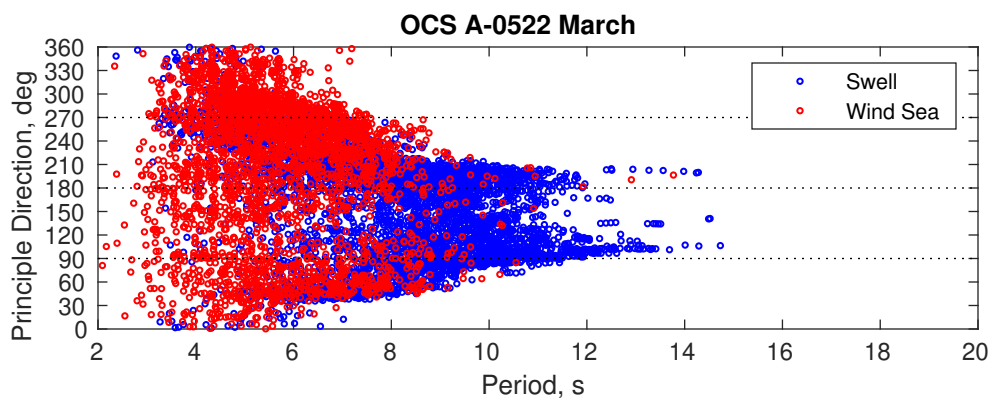
Severe Storms

There is a 80 % chance of a storm occurring in the month with winds peaking above 34 kts.

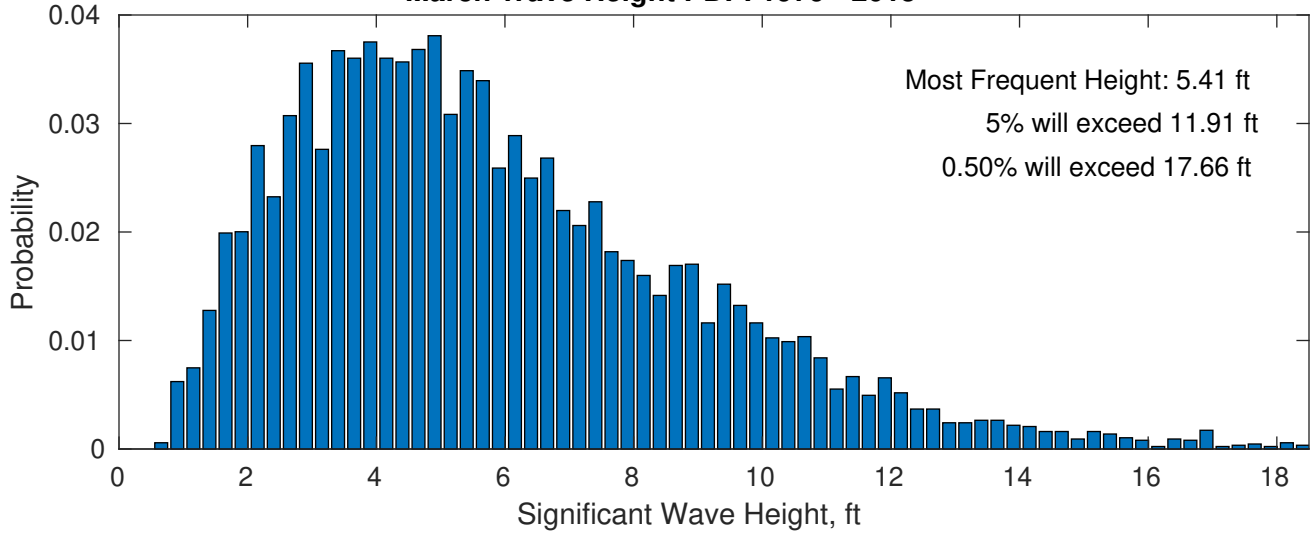
There is a 129 % chance of a storm occurring in the month with waves peaking at 4m (13 ft) or greater.

Wave Height Weather Days Probability Distribution Function

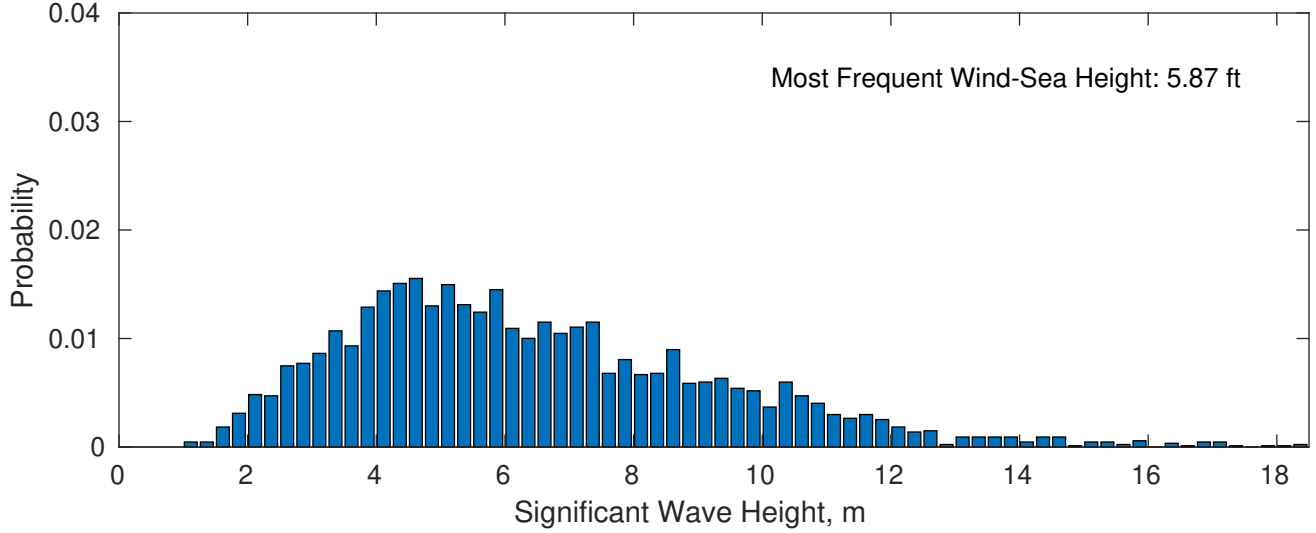




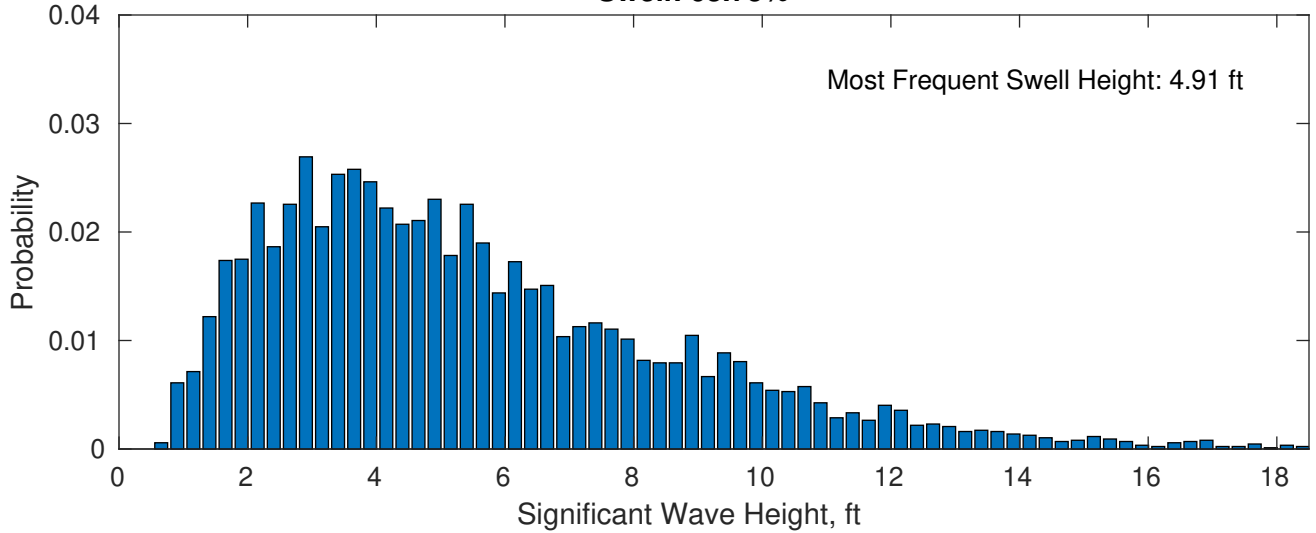
March Wave Height PDF: 1979 - 2015



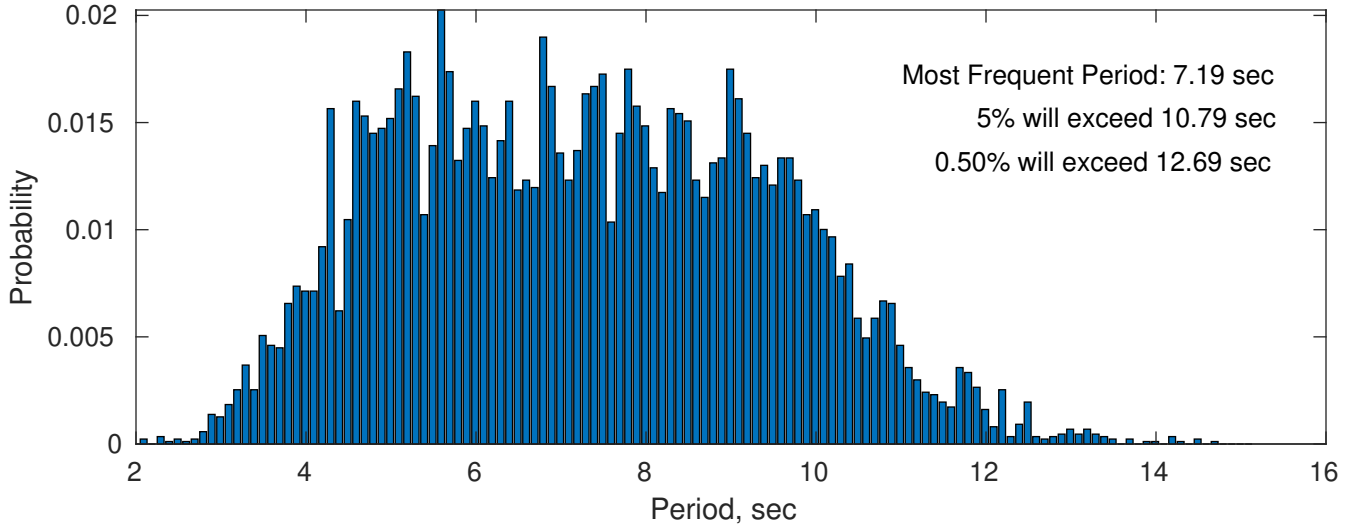
Wind-Sea: 36.25%



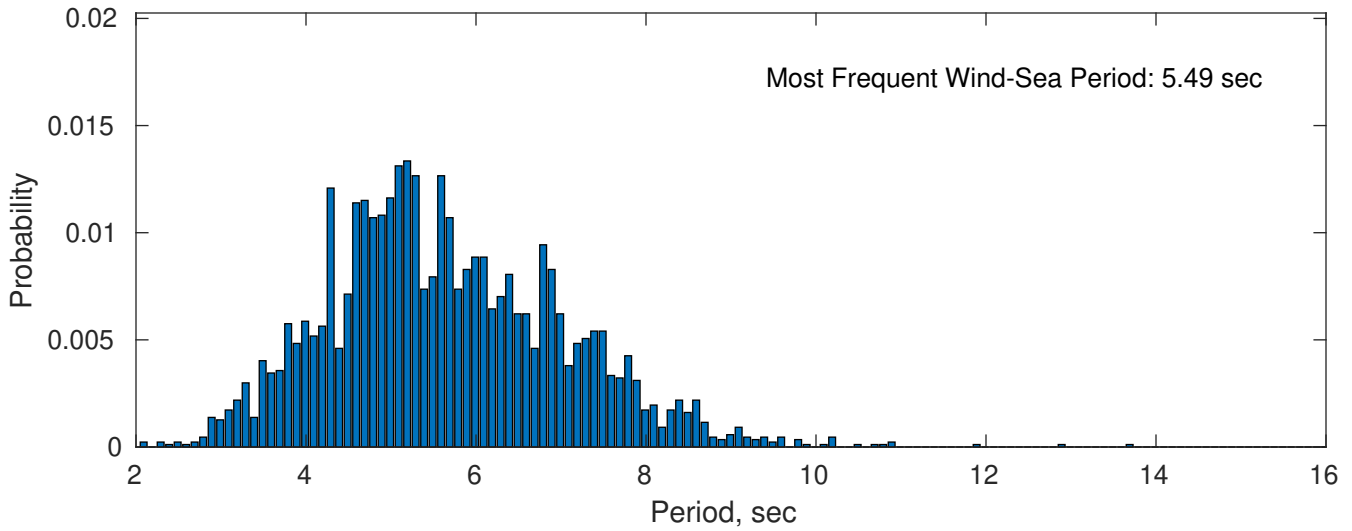
Swell: 63.75%



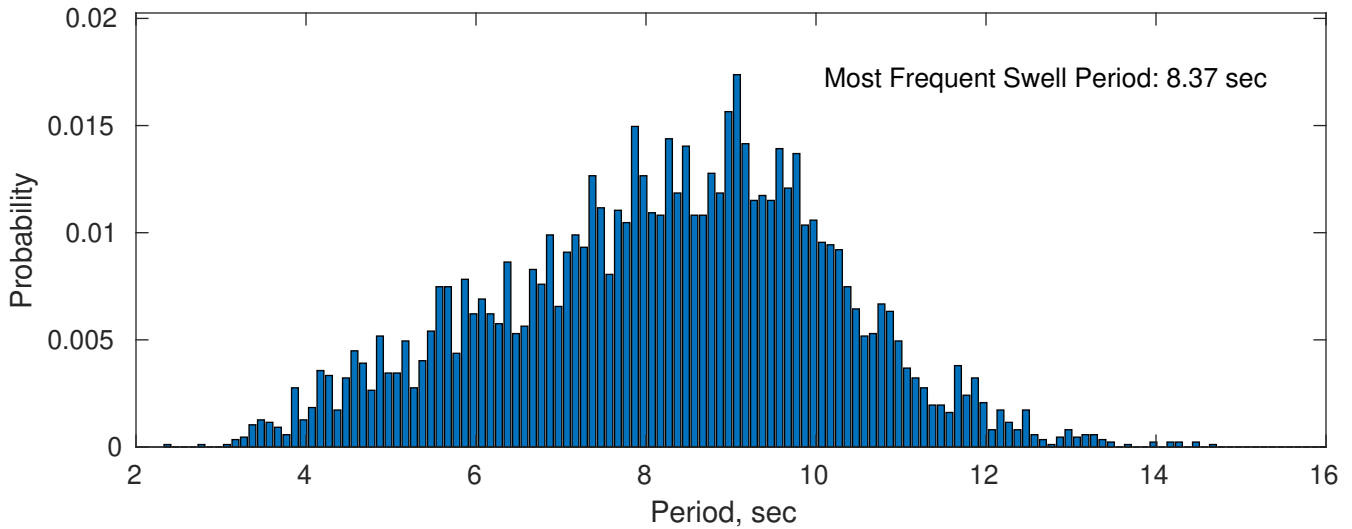
March Peak Wave Period PDF: 1979 - 2015



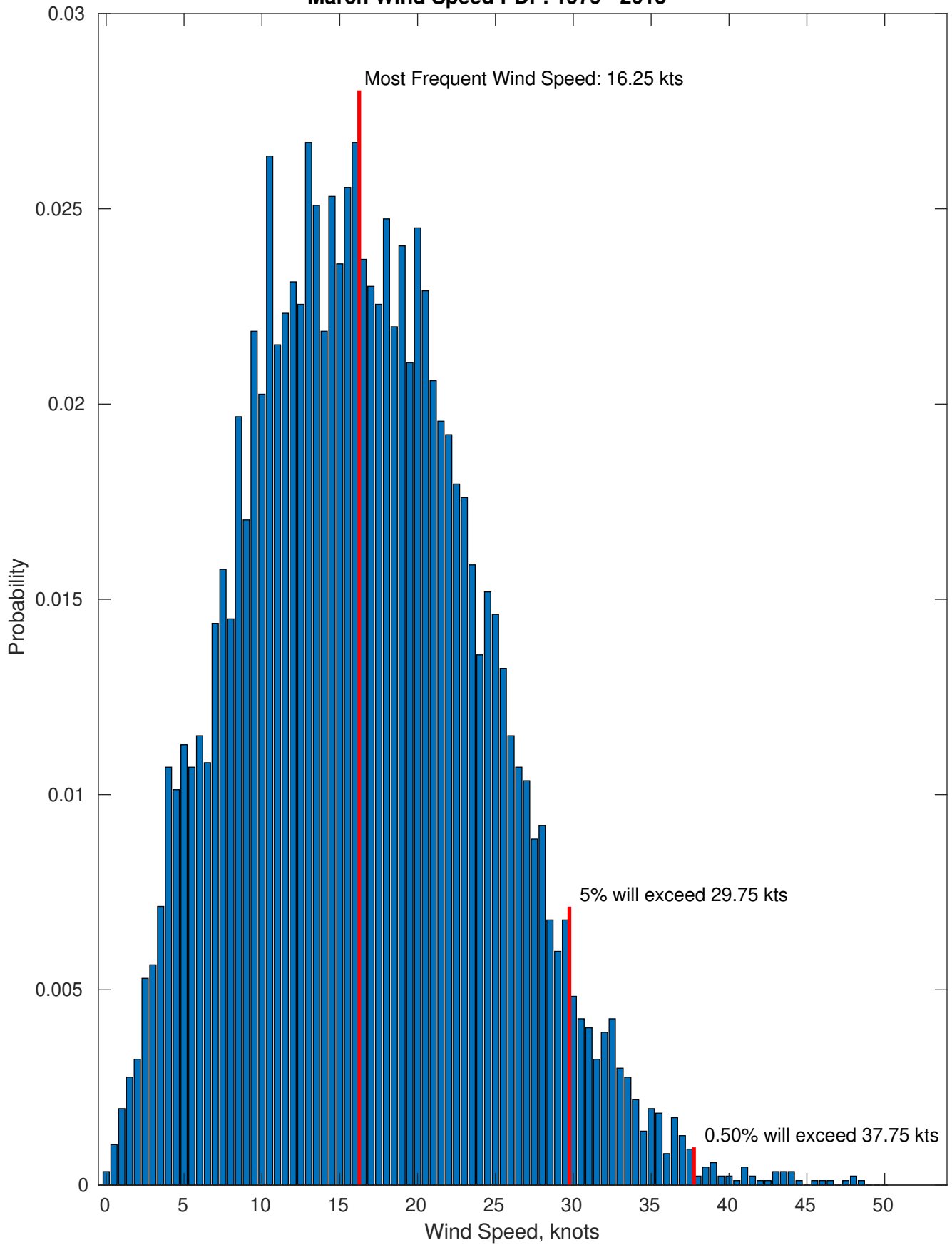
Wind-Sea: 36.25%



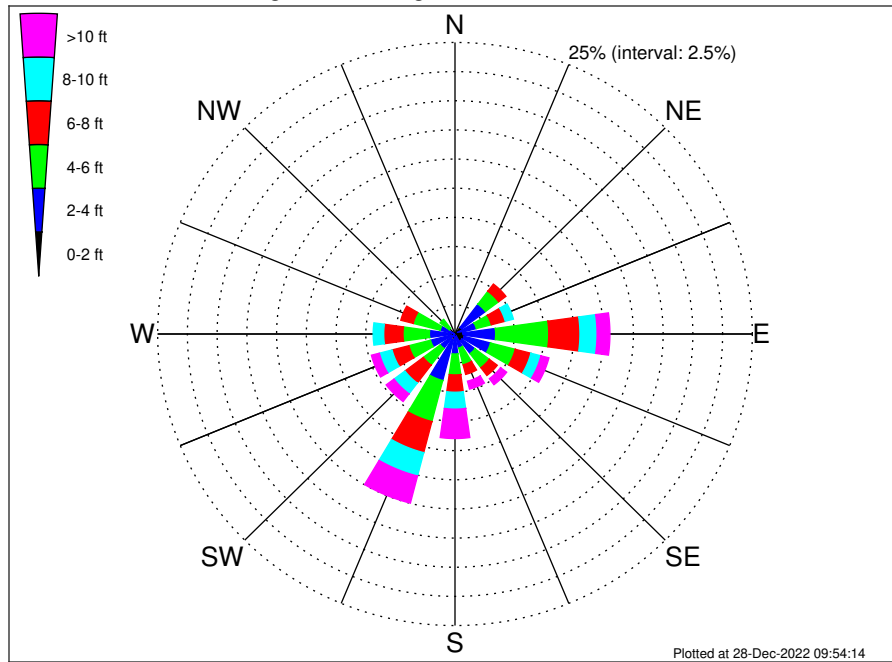
Swell: 63.75%



March Wind Speed PDF: 1979 - 2015



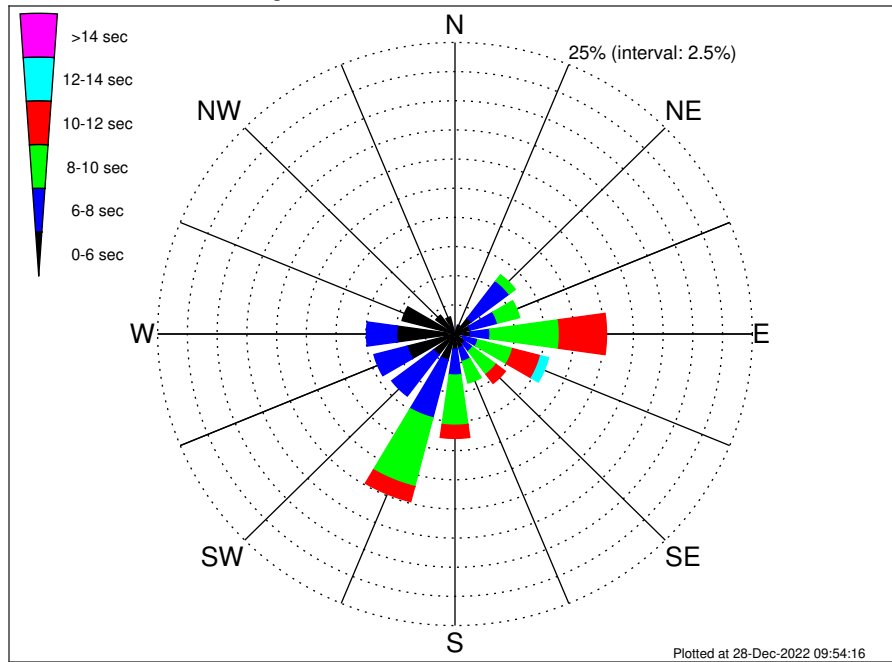
OCS A-0522 Climatological WaveHeight Rose for March: 1979 - 2015



Joint Frequency Distribution Table

	N	NNE	NE	ENE	E	ESE	SE	SSE	S	SSW	SW	WSW	W	WNW	NW	NNW	Total
calm	•	•	•	•	0.03	0.13	0.03	0.01	•	•	•	•	0.03	•	•	•	0.24
1 - 2 ft	0.03	0.03	0.70	0.26	0.63	0.67	0.69	0.21	0.23	0.55	0.06	0.31	0.44	0.07	0.02	0.05	4.96
2 - 4 ft	0.22	0.30	2.51	1.59	2.75	2.29	1.38	1.02	1.48	3.57	1.50	1.82	1.68	1.22	0.59	0.39	24.30
4 - 6 ft	0.31	0.25	1.38	1.30	4.46	2.15	1.51	1.48	1.80	3.64	1.78	1.88	2.22	2.35	0.97	0.59	28.07
6 - 8 ft	0.12	0.20	0.77	1.21	2.62	1.36	0.84	0.85	1.48	2.75	1.93	1.46	1.62	1.07	0.39	0.33	19.01
8 - 10 ft	0.02	0.06	0.60	0.71	1.44	0.87	0.35	0.60	1.45	2.07	1.15	1.10	0.89	0.28	0.09	0.23	11.91
10 - 12 ft	•	0.02	0.30	0.48	0.67	0.38	0.18	0.32	1.23	1.16	0.56	0.44	0.56	0.17	0.02	0.02	6.54
12 - 14 ft	0.02	0.01	0.07	0.09	0.26	0.14	0.21	0.13	0.74	0.75	0.14	0.16	0.02	0.01	0.01	0.01	2.77
14 - 16 ft	0.01	•	0.02	0.05	0.09	0.06	0.16	0.08	0.30	0.23	0.10	0.07	•	•	•	0.01	1.19
16 - 18 ft	•	•	•	•	0.05	0.06	0.06	0.07	0.12	0.12	0.02	0.02	0.01	•	•	•	0.52
> 18 ft	•	•	•	•	0.01	0.06	0.03	0.10	0.14	0.15	•	•	•	•	•	•	0.49
Total	0.74	0.87	6.35	5.70	13.03	8.16	5.44	4.88	8.96	14.98	7.25	7.26	7.48	5.17	2.09	1.63	100.00

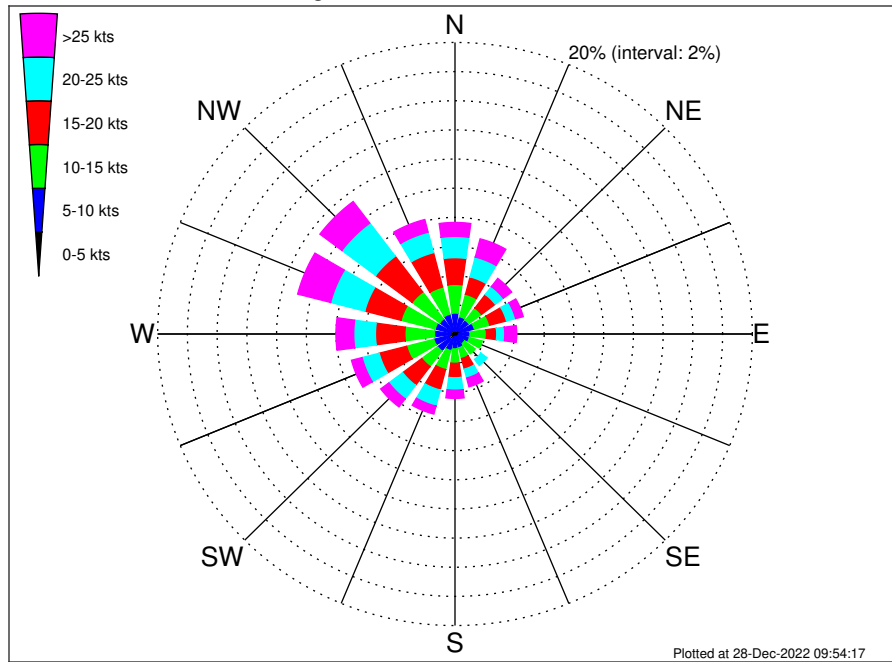
OCS A-0522 Climatological WavePeriod Rose for March: 1979 - 2015



Joint Frequency Distribution Table

	N	NNE	NE	ENE	E	ENE	SE	SSE	S	SSW	SW	WSW	W	WNW	NW	NNW	Total
calm	•	•	•	•	•	•	•	•	•	•	•	•	•	•	•	•	•
1 - 2 sec	•	•	•	•	•	•	•	•	•	•	•	•	•	•	•	•	•
2 - 4 sec	0.17	0.16	0.13	0.21	0.30	0.16	0.25	0.23	0.32	0.41	0.17	0.35	0.67	0.28	0.31	0.32	4.44
4 - 6 sec	0.52	0.63	1.61	1.10	0.99	0.53	0.78	1.01	0.99	1.90	2.09	3.81	4.23	4.33	1.71	1.20	27.45
6 - 8 sec	0.05	0.08	3.96	2.38	1.66	1.30	0.82	1.19	2.21	5.11	4.40	2.89	2.54	0.56	0.07	0.12	29.32
8 - 10 sec	•	•	0.66	1.92	5.83	3.01	2.47	1.91	4.30	6.09	0.59	0.22	0.03	•	•	•	27.04
10 - 12 sec	•	•	•	0.08	3.96	2.43	0.98	0.49	1.13	1.35	•	•	•	•	•	•	10.41
12 - 14 sec	•	•	•	•	0.29	0.69	0.12	0.05	0.01	0.09	•	•	•	•	•	•	1.24
14 - 16 sec	•	•	•	•	•	0.03	0.02	•	•	0.03	•	•	•	•	•	•	0.09
18 - 20 sec	•	•	•	•	•	•	•	•	•	•	•	•	•	•	•	•	•
22 - 24 sec	•	•	•	•	•	•	•	•	•	•	•	•	•	•	•	•	•
Total	0.74	0.87	6.35	5.70	13.03	8.16	5.44	4.88	8.96	14.98	7.25	7.26	7.48	5.17	2.09	1.63	100.00

OCS A-0522 Climatological Wind Rose for March: 1979 - 2015



Joint Frequency Distribution Table

	N	NNE	NE	ENE	E	ESE	SE	SSE	S	SSW	SW	WSW	W	WNW	NW	NNW	Total
calm	•	•	•	0.02	•	0.01	•	0.01	0.01	0.01	0.01	0.02	•	0.01	0.01	0.01	0.14
0 - 5 kts	0.29	0.30	0.30	0.33	0.25	0.25	0.21	0.24	0.18	0.30	0.44	0.40	0.35	0.29	0.28	0.28	4.68
5 - 10 kts	1.15	0.93	0.87	0.99	0.76	0.74	0.60	0.72	0.83	0.86	1.01	1.05	1.04	1.08	1.00	1.12	14.75
10 - 15 kts	1.97	1.59	1.06	1.07	1.10	0.90	0.90	0.76	0.99	1.35	1.33	1.89	1.99	2.37	2.32	1.92	23.51
15 - 20 kts	1.83	1.23	1.16	1.16	0.69	0.43	0.47	0.75	0.99	1.45	1.61	1.91	1.98	2.52	3.07	2.44	23.69
20 - 25 kts	1.46	1.40	0.68	0.63	0.54	0.36	0.53	0.63	0.85	1.14	1.16	1.19	1.46	2.37	2.84	1.45	18.70
25 - 30 kts	0.63	0.79	0.45	0.33	0.48	0.14	0.36	0.43	0.37	0.41	0.59	0.55	0.83	1.31	1.37	0.76	9.80
30 - 35 kts	0.17	0.39	0.20	0.14	0.20	0.10	0.10	0.14	0.13	0.12	0.06	0.14	0.23	0.77	0.43	0.08	3.38
35 - 40 kts	0.07	0.08	0.06	0.02	0.10	0.08	0.02	0.06	0.06	0.02	0.03	0.03	0.09	0.17	0.06	0.03	1.00
40 - 45 kts	0.06	0.02	•	0.02	0.01	0.02	•	•	0.01	•	•	0.01	0.03	0.03	•	0.01	0.24
45 - 50 kts	0.02	•	•	0.01	0.01	•	•	•	•	0.01	0.01	•	0.01	•	•	0.01	0.09
Total	7.65	6.74	4.78	4.74	4.15	3.03	3.19	3.74	4.42	5.67	6.26	7.19	8.01	10.93	11.38	8.11	100.00