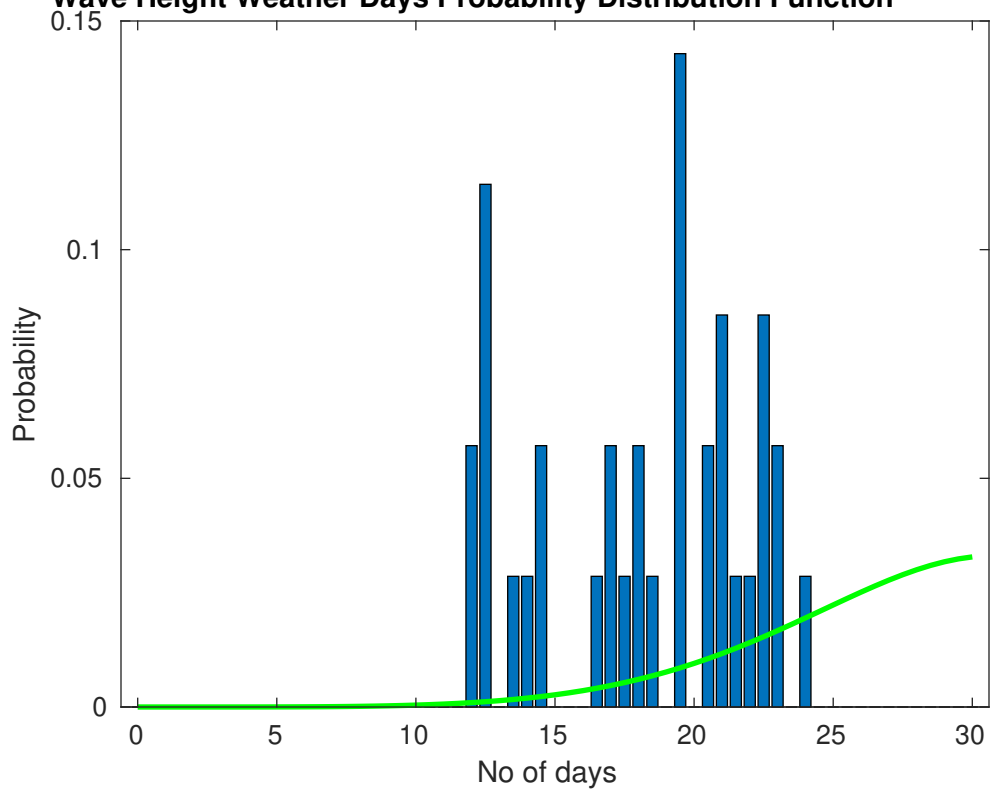
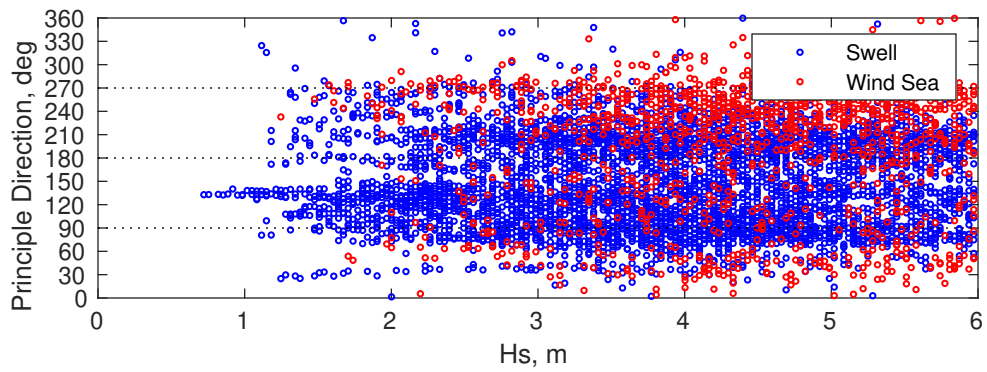
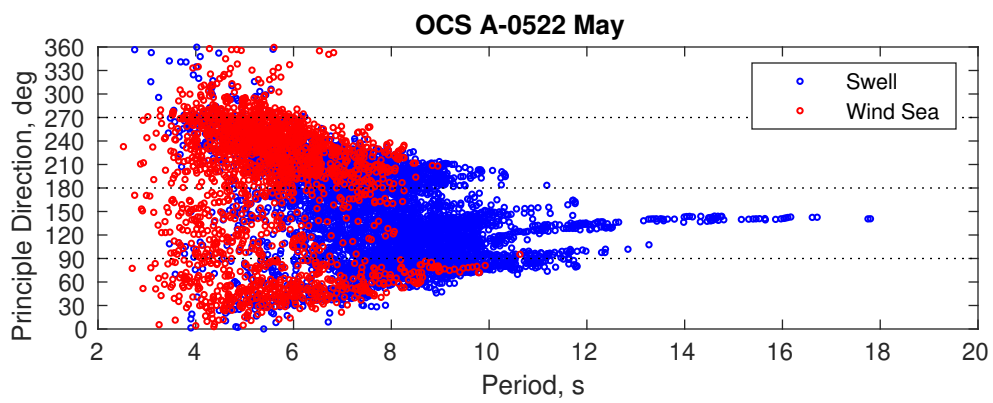


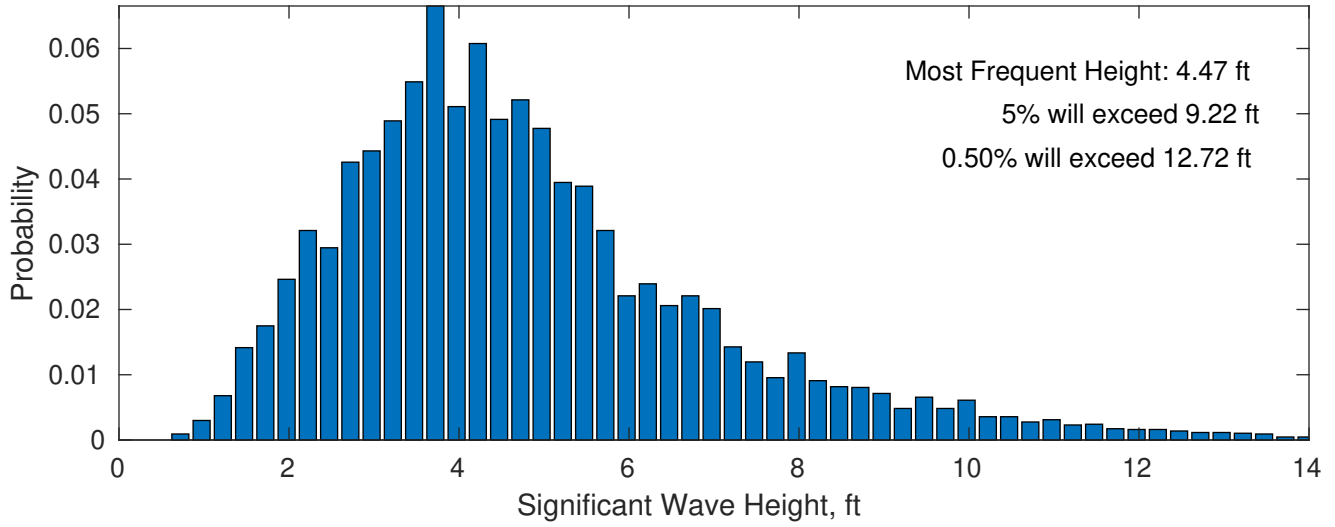


**Wave Height Weather Days Probability Distribution Function**

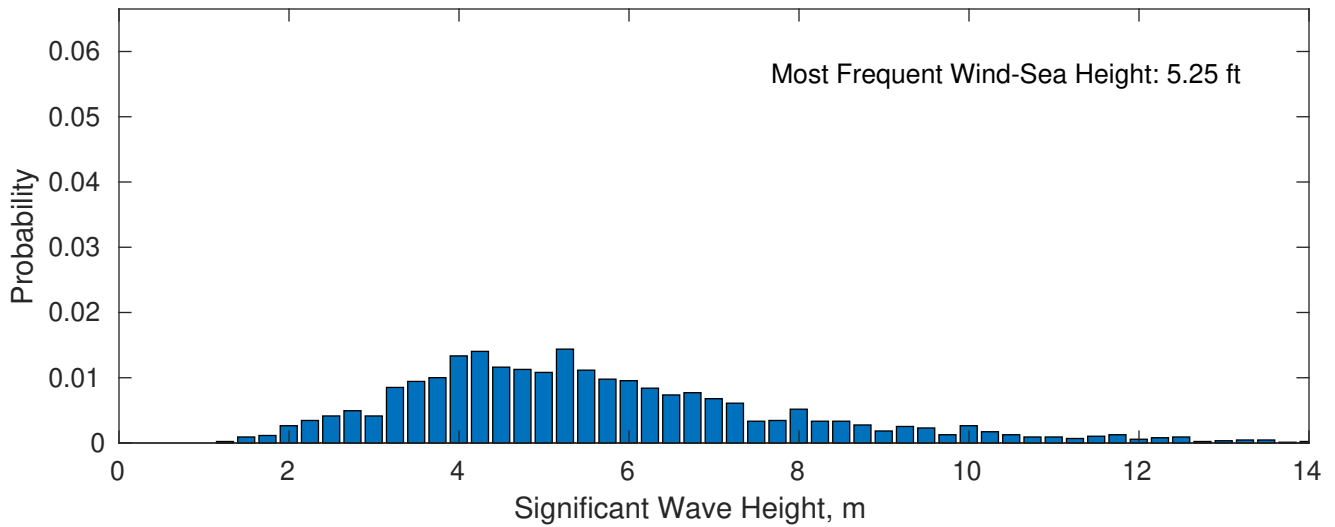




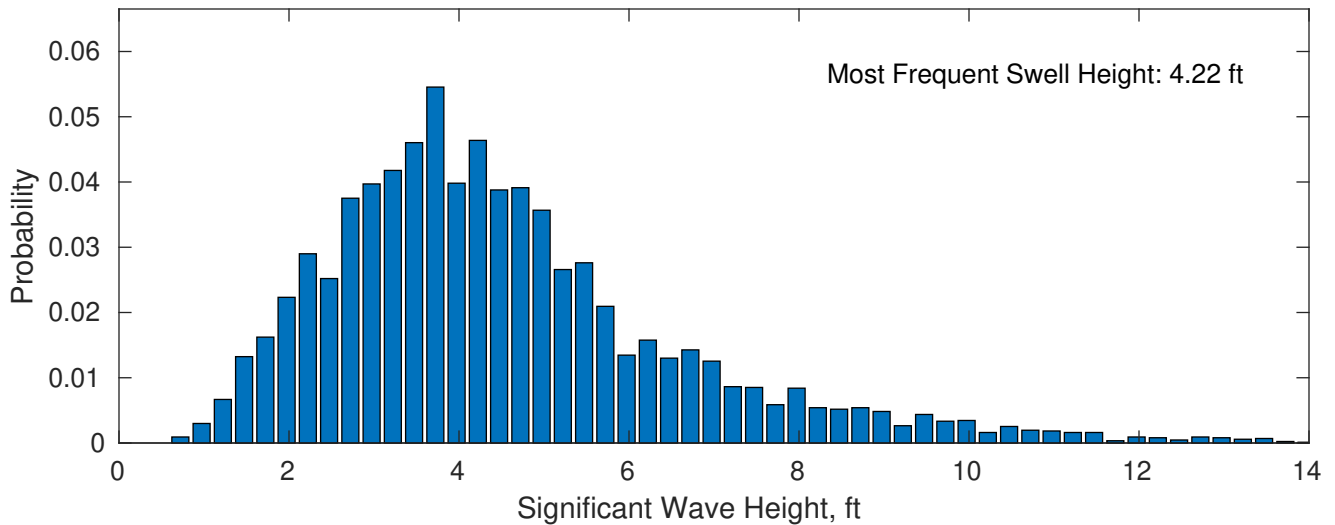
**May Wave Height PDF: 1979 - 2015**



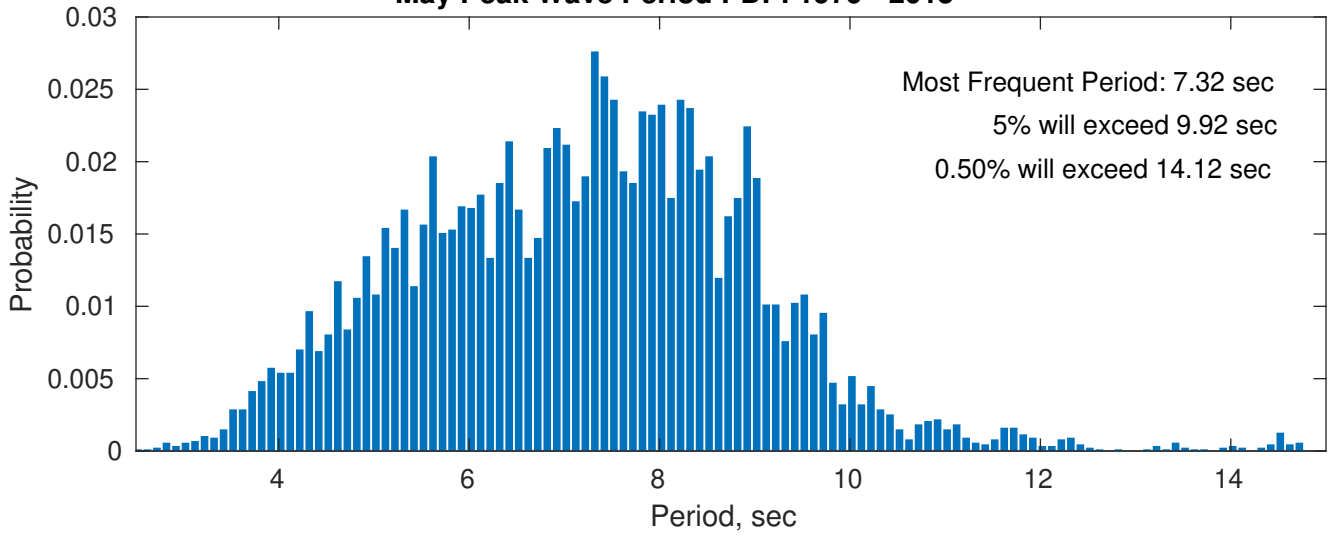
**Wind-Sea: 23.62%**



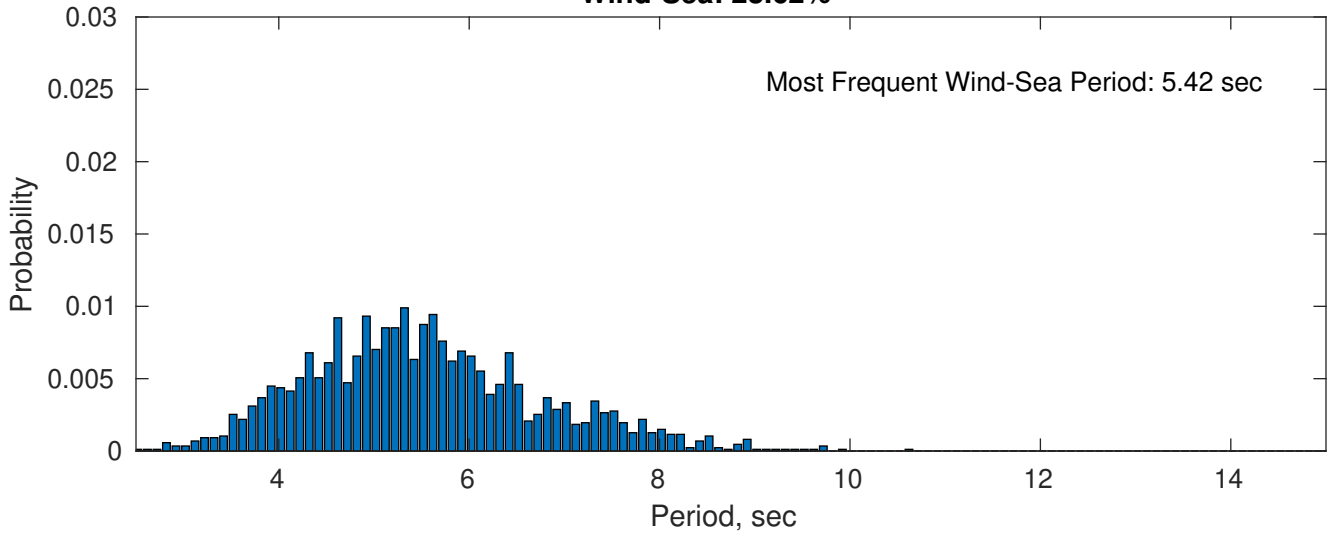
**Swell: 76.38%**



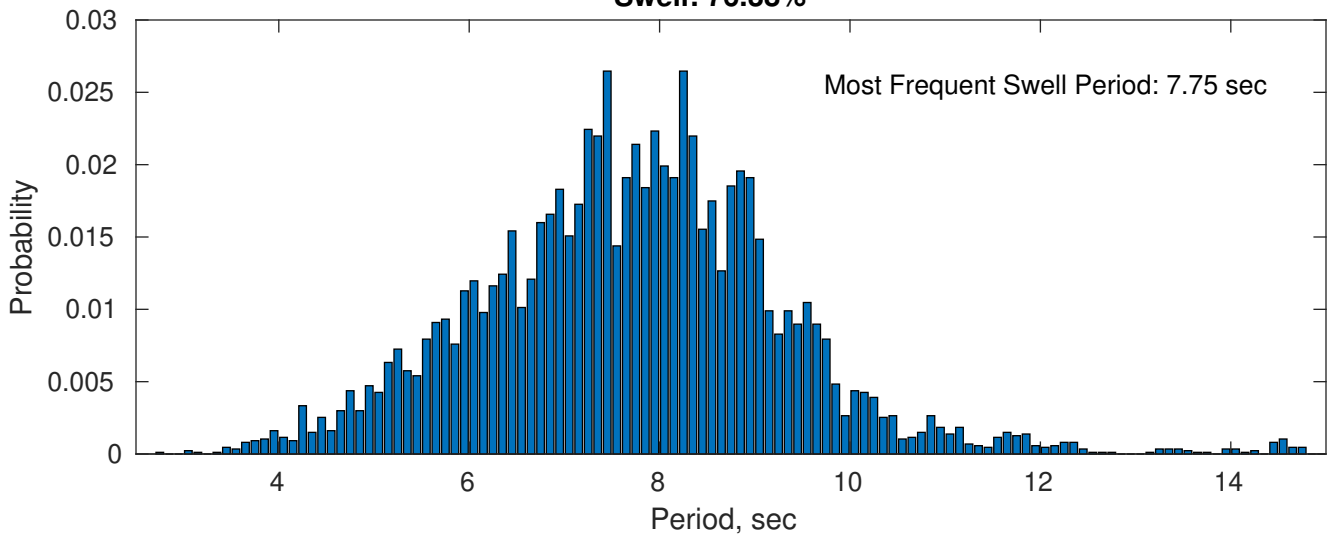
### May Peak Wave Period PDF: 1979 - 2015



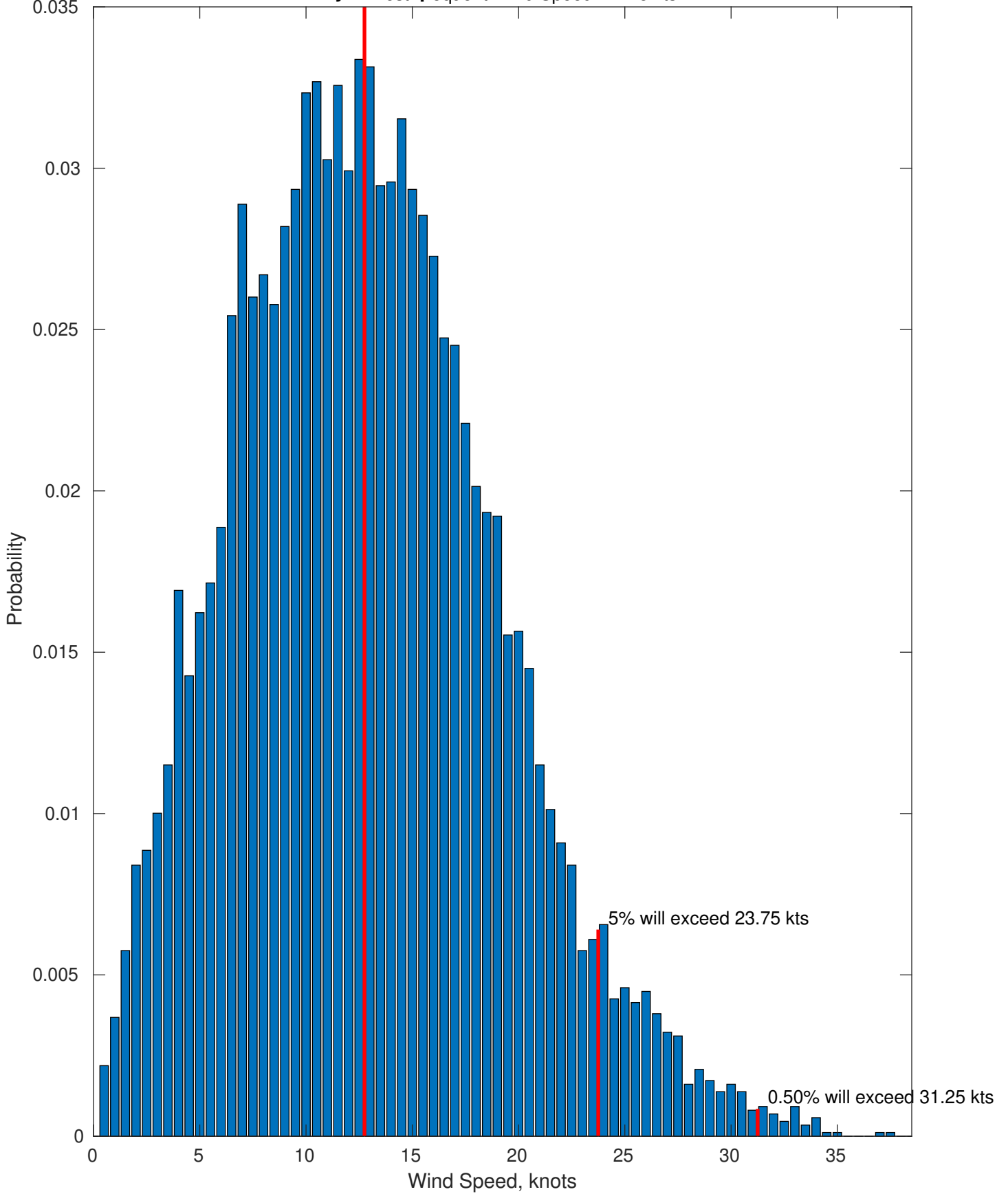
### Wind-Sea: 23.62%



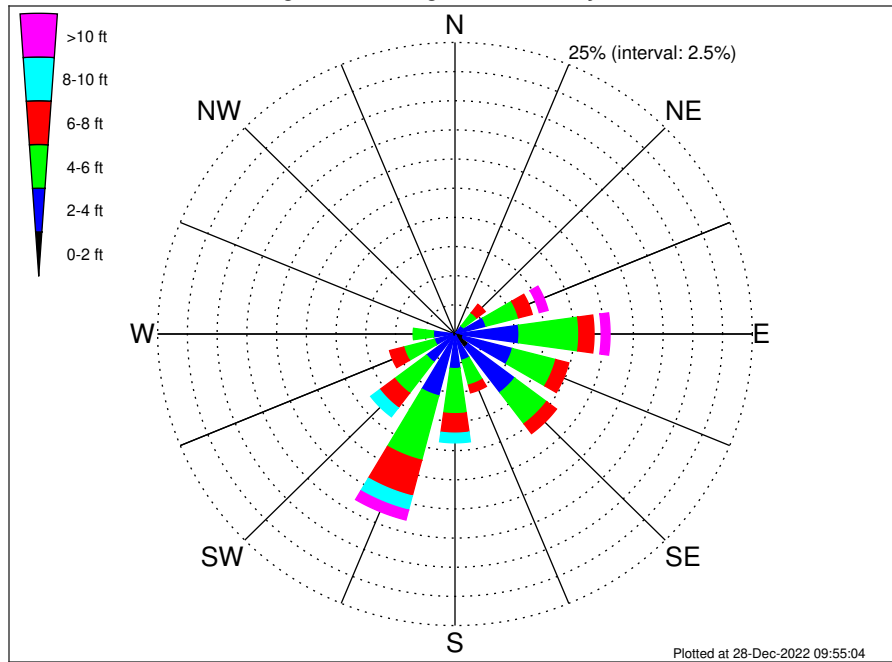
### Swell: 76.38%



May Wind Speed PDF: 1979-2015



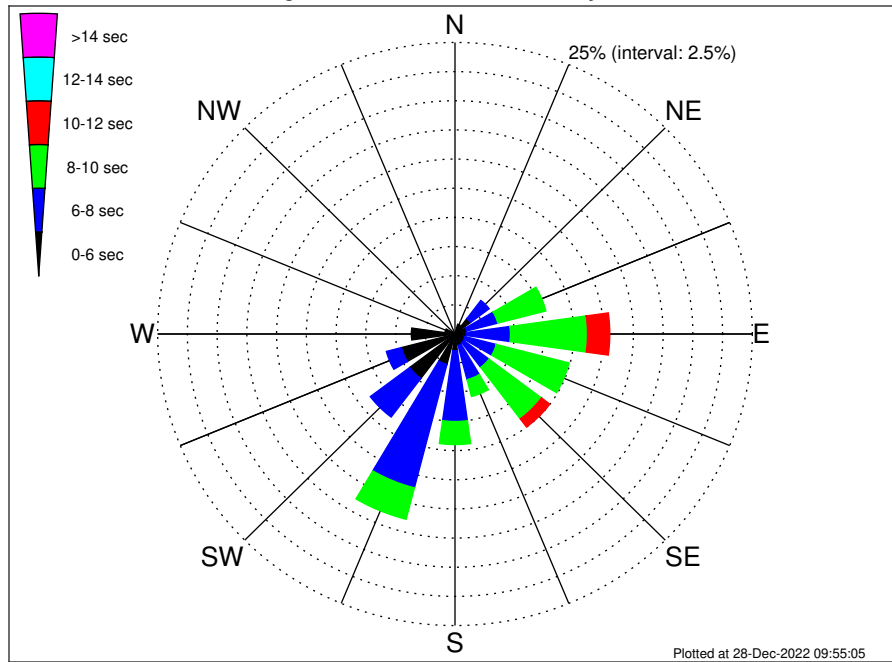
OCS A-0522 Climatological WaveHeight Rose for May: 1979 - 2015



Joint Frequency Distribution Table

	N	NNE	NE	ENE	E	ESE	SE	SSE	S	SSW	SW	WSW	W	WNW	NW	NNW	Total
calm	•	•	•	•	•	•	0.12	•	•	•	•	•	•	•	•	•	0.12
1 - 2 ft	0.01	0.12	0.06	0.09	0.44	0.71	1.28	0.13	0.24	0.26	0.25	0.26	0.22	0.01	0.02	0.01	4.12
2 - 4 ft	0.08	0.21	0.83	2.60	4.95	4.28	4.89	2.20	2.73	5.21	2.75	1.53	1.60	0.31	0.12	0.06	34.34
4 - 6 ft	0.13	0.45	1.40	2.83	5.03	3.76	3.36	2.20	3.87	5.71	3.35	2.66	1.70	0.51	0.15	0.03	37.13
6 - 8 ft	0.03	0.17	0.90	1.19	1.28	1.13	1.05	0.69	1.67	3.16	1.58	1.23	0.36	0.02	0.06	0.05	14.56
8 - 10 ft	0.01	0.05	0.46	0.61	0.60	0.45	0.24	0.48	0.83	1.25	0.96	0.20	0.01	•	•	0.01	6.16
10 - 12 ft	0.03	0.08	0.14	0.43	0.39	0.09	0.03	0.12	0.17	0.67	0.31	0.07	•	•	•	•	2.53
12 - 14 ft	0.01	•	•	0.28	0.31	0.02	0.03	•	•	0.21	0.06	0.01	•	•	•	•	0.93
14 - 16 ft	•	•	•	0.07	0.05	•	•	•	•	•	•	•	•	•	•	•	0.12
16 - 18 ft	•	•	•	•	•	•	•	•	•	•	•	•	•	•	•	•	•
> 18 ft	•	•	•	•	•	•	•	•	•	•	•	•	•	•	•	•	•
Total	0.31	1.07	3.79	8.09	13.04	10.45	11.00	5.81	9.51	16.48	9.25	5.96	3.89	0.85	0.35	0.16	100.00

OCS A-0522 Climatological WavePeriod Rose for May: 1979 - 2015

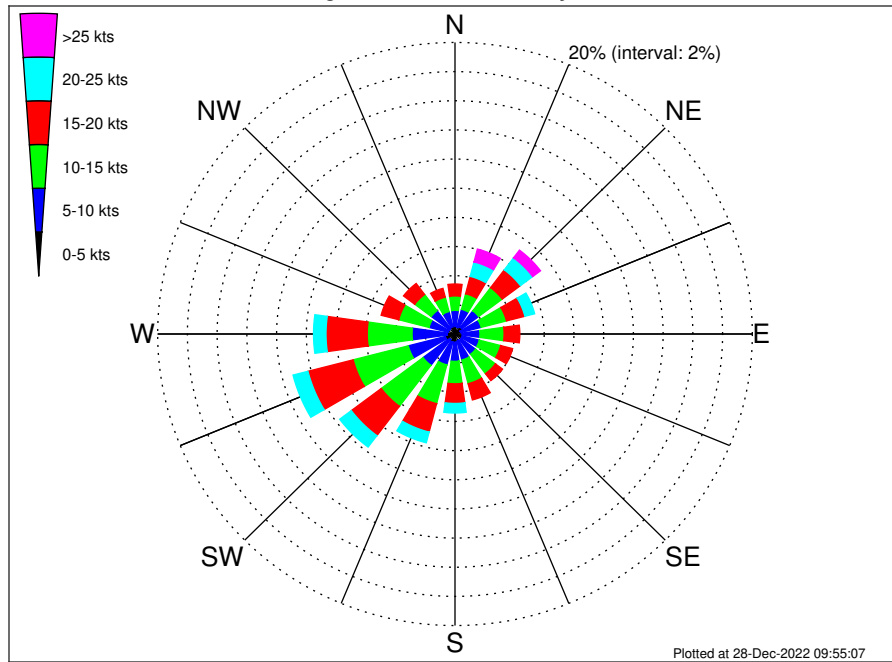


Joint Frequency Distribution Table

	N	NNE	NE	ENE	E	ESE	SE	SSE	S	SSW	SW	WSW	W	WNW	NW	NNW	Total
calm	•	•	•	•	•	•	•	•	•	•	•	•	•	•	•	•	•
1 - 2 sec	•	•	•	•	•	•	•	•	•	•	•	•	•	•	•	•	•
2 - 4 sec	0.06	0.06	0.13	0.23	0.16	0.15	0.12	0.22	0.08	0.13	0.24	0.31	0.48	0.07	0.03	0.05	2.51
4 - 6 sec	0.21	0.81	1.53	0.78	0.79	0.70	0.78	0.79	1.36	2.57	4.53	4.34	3.19	0.78	0.31	0.12	23.59
6 - 8 sec	0.05	0.21	1.94	2.70	3.71	2.73	2.68	3.03	6.06	10.93	4.14	1.31	0.22	•	•	•	39.71
8 - 10 sec	•	•	0.18	4.18	6.48	6.33	5.54	1.50	1.98	2.78	0.33	•	•	•	•	•	29.30
10 - 12 sec	•	•	•	0.20	1.88	0.51	0.87	0.28	0.02	0.07	•	•	•	•	•	•	3.82
12 - 14 sec	•	•	•	•	0.02	0.03	0.46	•	•	•	•	•	•	•	•	•	0.52
14 - 16 sec	•	•	•	•	•	•	0.46	•	•	•	•	•	•	•	•	•	0.46
18 - 20 sec	•	•	•	•	•	•	0.09	•	•	•	•	•	•	•	•	•	0.09
22 - 24 sec	•	•	•	•	•	•	•	•	•	•	•	•	•	•	•	•	•
Total	0.31	1.07	3.79	8.09	13.04	10.45	11.00	5.81	9.51	16.48	9.25	5.96	3.89	0.85	0.35	0.16	100.00



OCS A-0522 Climatological Wind Rose for May: 1979 - 2015



Joint Frequency Distribution Table

	N	NNE	NE	ENE	E	ESE	SE	SSE	S	SSW	SW	WSW	W	WNW	NW	NNW	Total
calm	•	•	0.03	•	0.01	•	0.03	0.05	0.03	•	0.01	0.02	•	•	0.02	•	0.22
0 - 5 kts	0.52	0.47	0.54	0.39	0.46	0.51	0.49	0.44	0.53	0.56	0.46	0.64	0.52	0.47	0.43	0.51	7.94
5 - 10 kts	1.10	1.28	1.42	1.43	1.21	1.19	1.21	1.36	1.31	1.62	2.22	2.58	2.37	1.33	1.55	1.08	24.26
10 - 15 kts	0.99	1.10	1.99	1.76	1.62	1.48	1.67	1.68	1.54	2.75	3.52	3.83	3.01	2.11	1.39	1.02	31.48
15 - 20 kts	0.82	1.23	1.53	1.28	1.06	0.83	0.60	1.15	1.35	2.01	2.52	3.14	2.77	1.22	0.94	0.62	23.07
20 - 25 kts	0.40	1.02	1.04	0.68	0.25	0.22	0.14	0.29	0.66	0.76	0.98	1.04	0.84	0.49	0.29	0.10	9.19
25 - 30 kts	0.29	0.61	0.55	0.20	0.10	0.06	0.07	0.03	0.21	0.23	0.22	0.17	0.12	0.07	0.03	0.06	3.01
30 - 35 kts	0.17	0.29	0.10	0.06	•	0.01	•	•	0.02	0.02	•	0.01	0.05	0.02	•	0.02	0.78
35 - 40 kts	0.02	0.01	•	•	•	•	•	•	•	•	•	•	•	•	•	•	0.03
40 - 45 kts	•	•	•	•	•	•	•	•	•	•	•	•	•	•	•	•	•
45 - 50 kts	•	•	•	•	•	•	•	•	•	•	•	•	•	•	•	•	•
Total	4.32	6.02	7.20	5.79	4.72	4.29	4.21	4.99	5.65	7.96	9.93	11.44	9.68	5.72	4.66	3.42	100.00