

OCS A-0522 - November

Latitude: 40.67 N Longitude: 70.26 W

Weather Days

Wave Height > 4.0 ft Mean: 20.8 days Range: 18.5 - 23.1 days p50:21.5 days p75:20.5 days p90:18 days
 Wave Height > 5.0 ft Mean: 16.3 days Range: 13.8 - 18.9 days p50:17.5 days p75:16 days p90:14 days
 Wave Height > 6.0 ft Mean: 12.2 days Range: 9.4 - 14.9 days p50:13.5 days p75:11.5 days p90:9 days

Wind Speed > 20.0 knots Mean: 10.0 days Range: 7.4 - 12.6 days p50:10.5 days p75:8.5 days p90:7 days
 Wind Speed > 25.0 knots Mean: 4.5 days Range: 2.5 - 6.4 days p50:4.5 days p75:3 days p90:2.5 days
 Wind Speed > 30.0 knots Mean: 1.5 days Range: 0.3 - 2.7 days p50:2 days p75:1 days p90:0.5 days

Working Window Probability

Wave Height < 4.0 ft	3 days or longer: 12%
	5 days or longer: 1%
	7 days or longer: 0%
Wave Height < 5.0 ft	3 days or longer: 25%
	5 days or longer: 3%
	7 days or longer: 1%
Wave Height < 6.0 ft	3 days or longer: 37%
	5 days or longer: 5%
	7 days or longer: 1%

Waves

Mean Height: 4 - 6 ft
 The wave heights will occasionally reach 14 - 16 ft, but rarely higher.

Mean Period: 6 - 8 sec
 The wave periods will occasionally reach 12 - 14 sec, but rarely longer.

Principle Direction, from: ESE
 WindSea/Swell: 41% / 59%

Winds

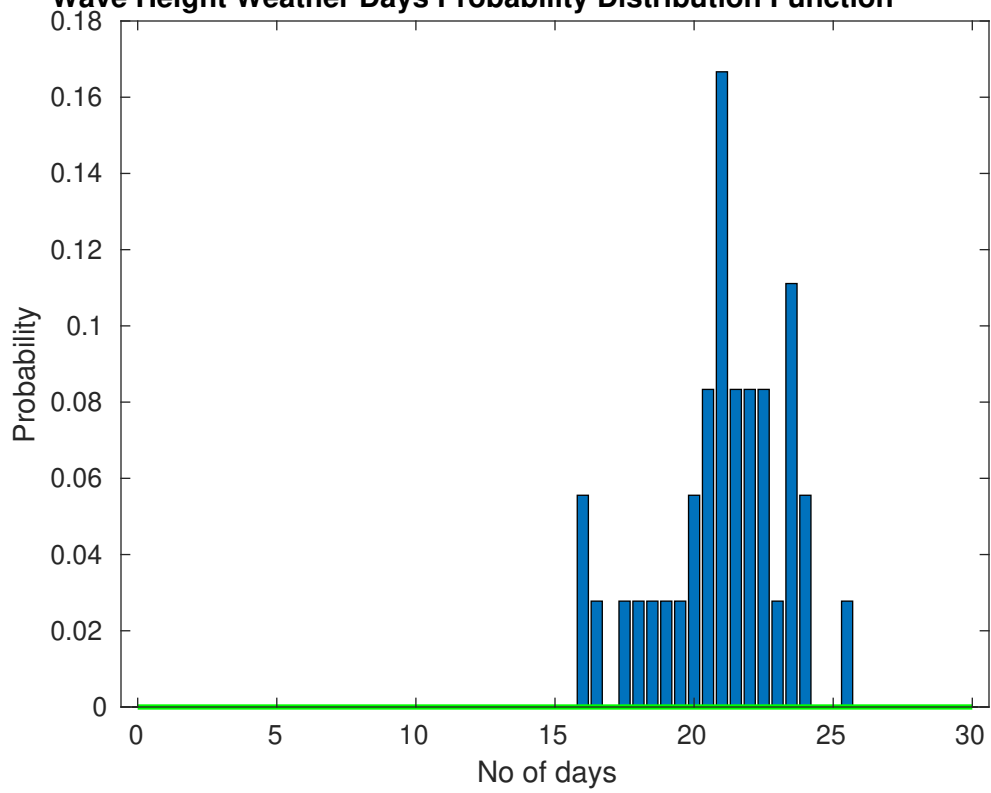
Mean Speed: 15 - 20 kts
 The winds will occasionally reach 35 - 40 kts, but rarely greater.

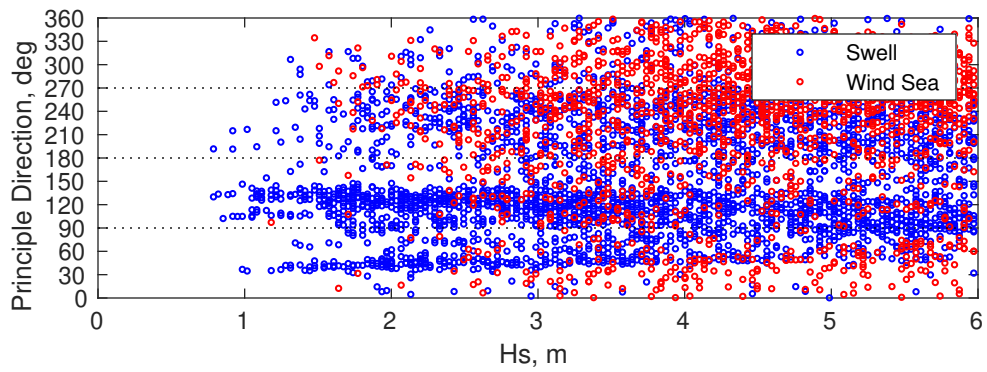
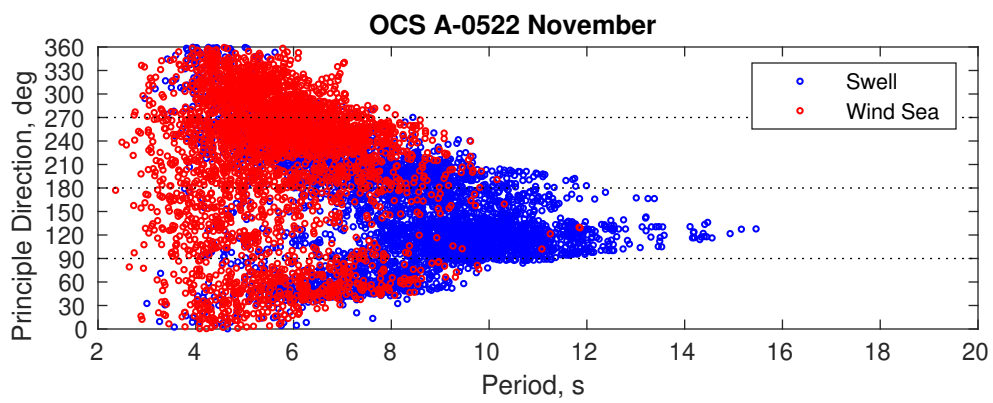
Principle Direction, from: NW

Severe Storms

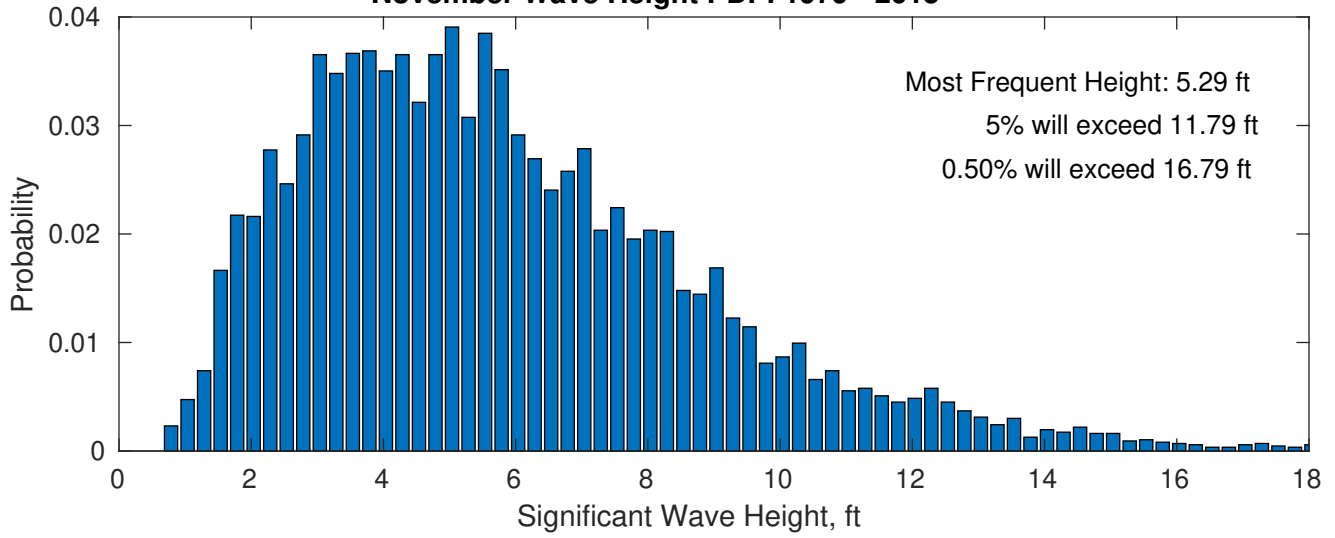
There is a 72 % chance of a storm occurring in the month with winds peaking above 34 kts.
 There is a 117 % chance of a storm occurring in the month with waves peaking at 4m (13 ft) or greater.

Wave Height Weather Days Probability Distribution Function

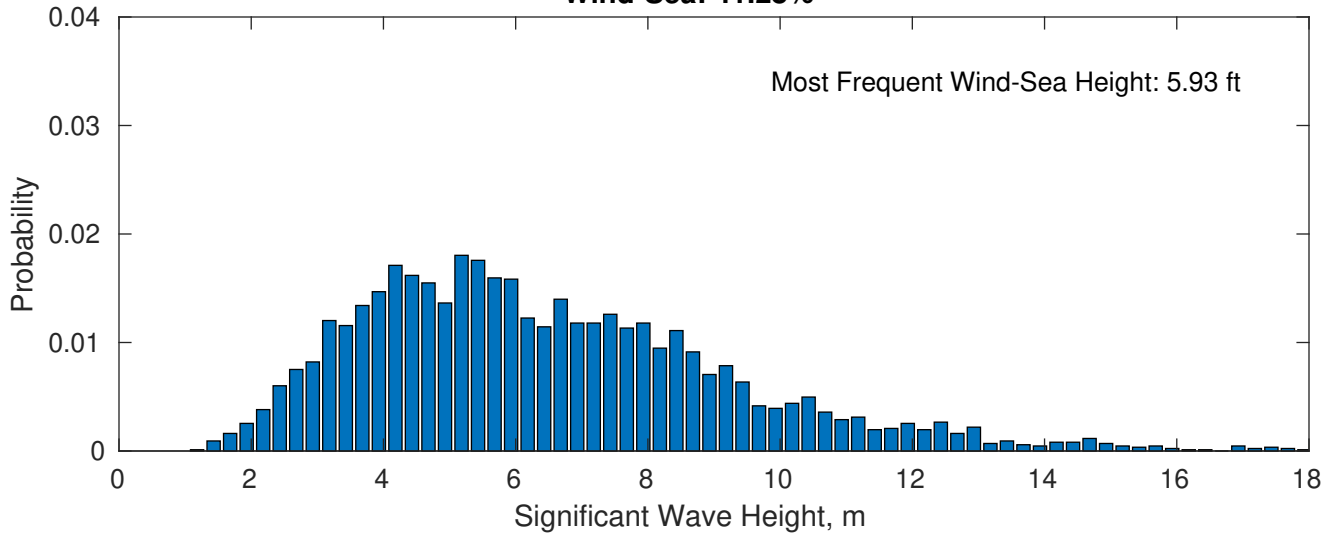




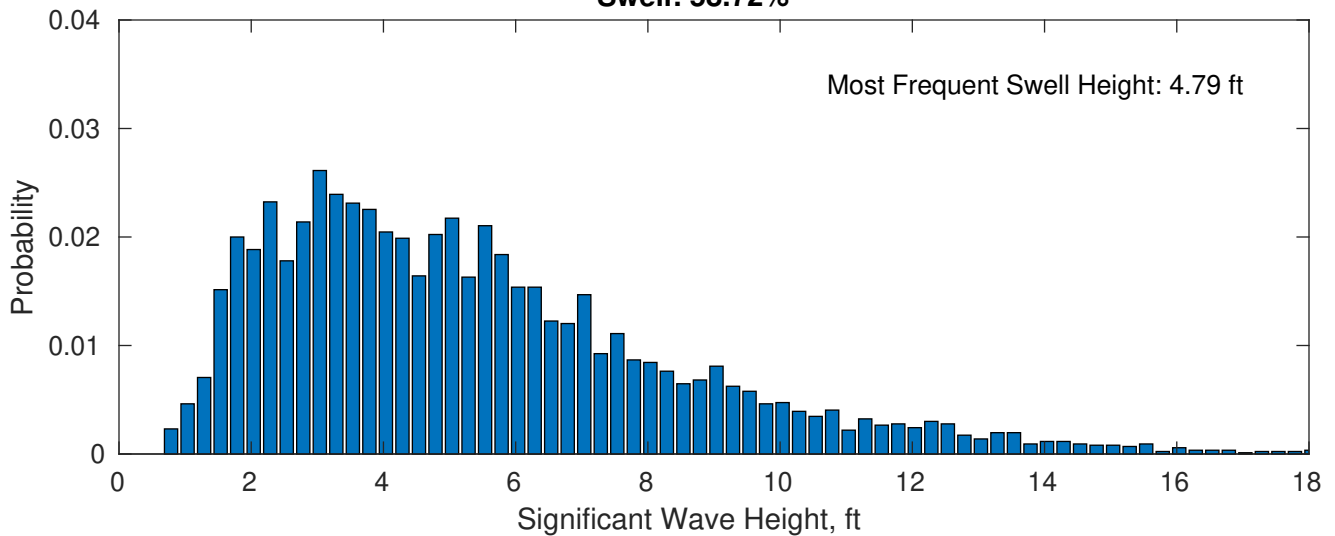
November Wave Height PDF: 1979 - 2015



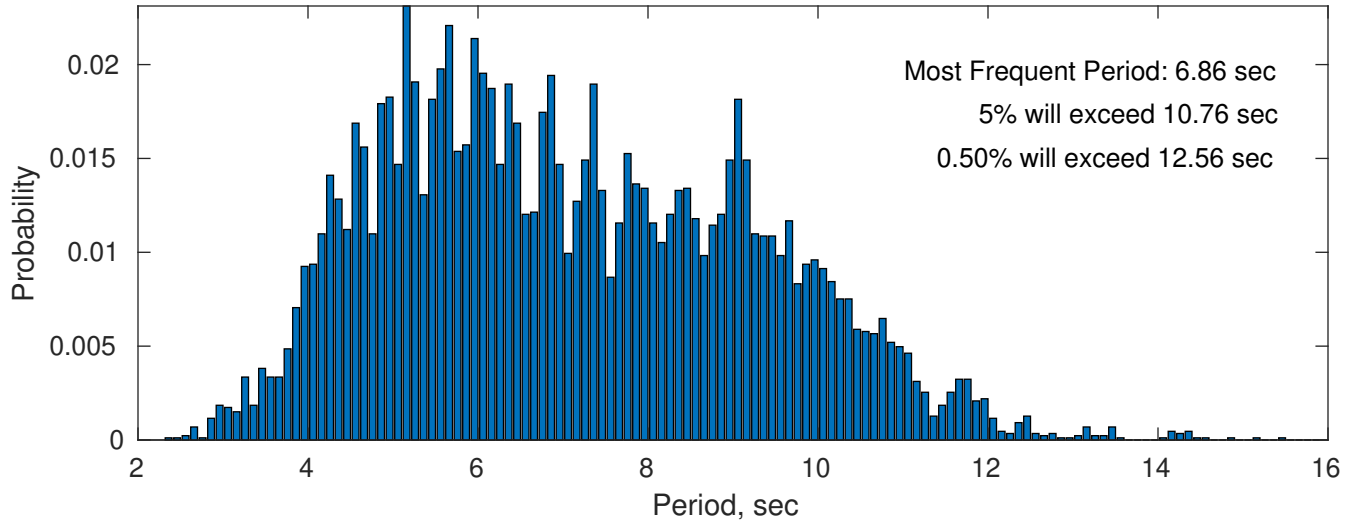
Wind-Sea: 41.28%



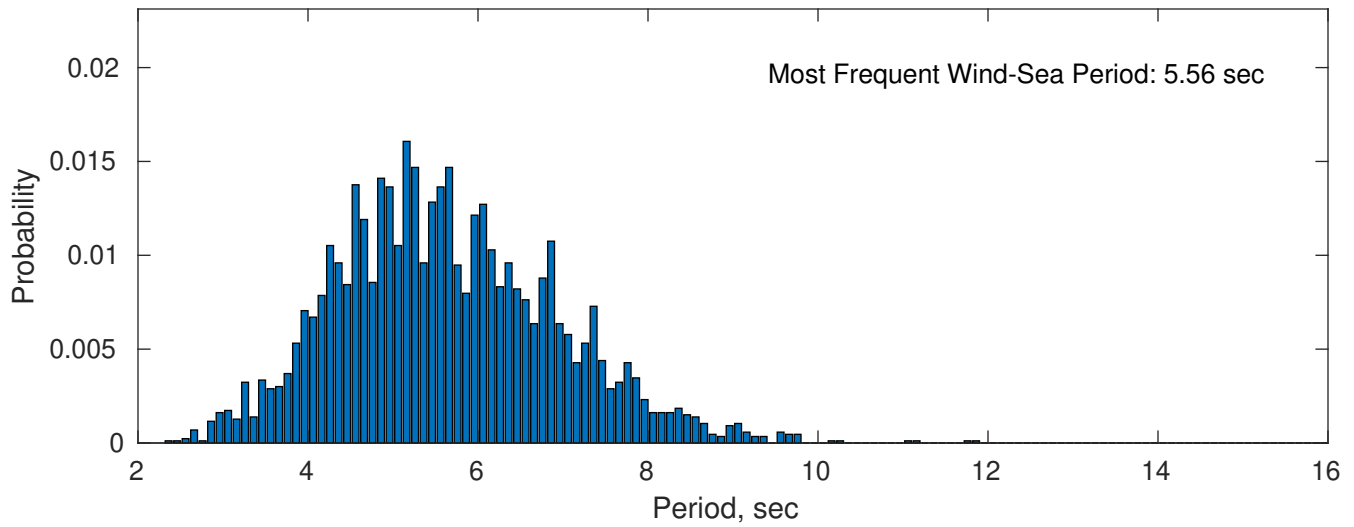
Swell: 58.72%



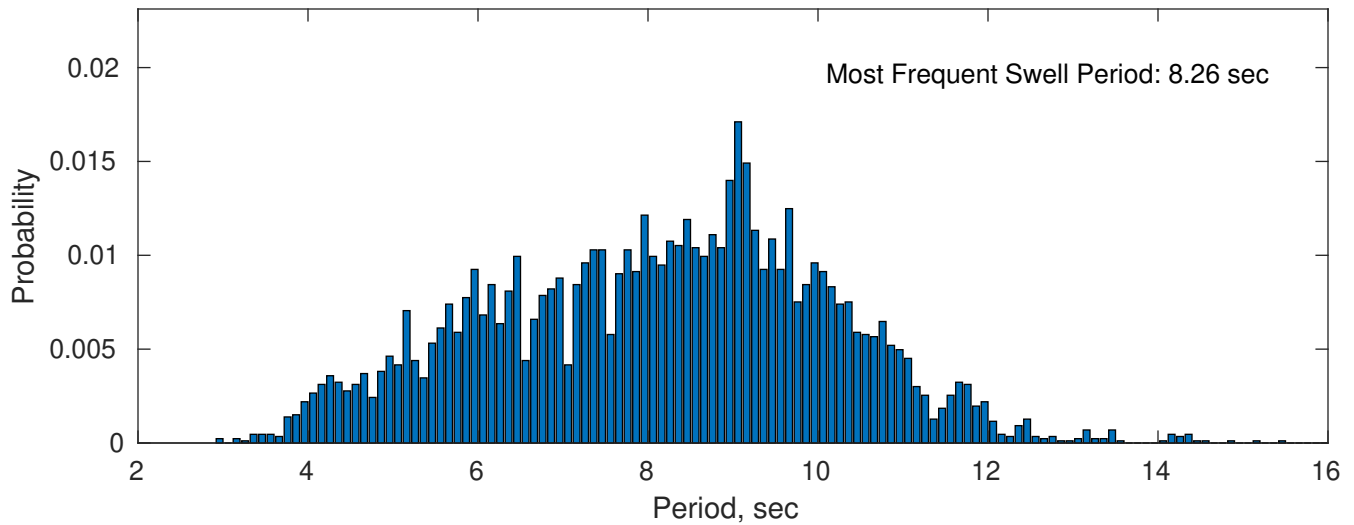
November Peak Wave Period PDF: 1979 - 2015



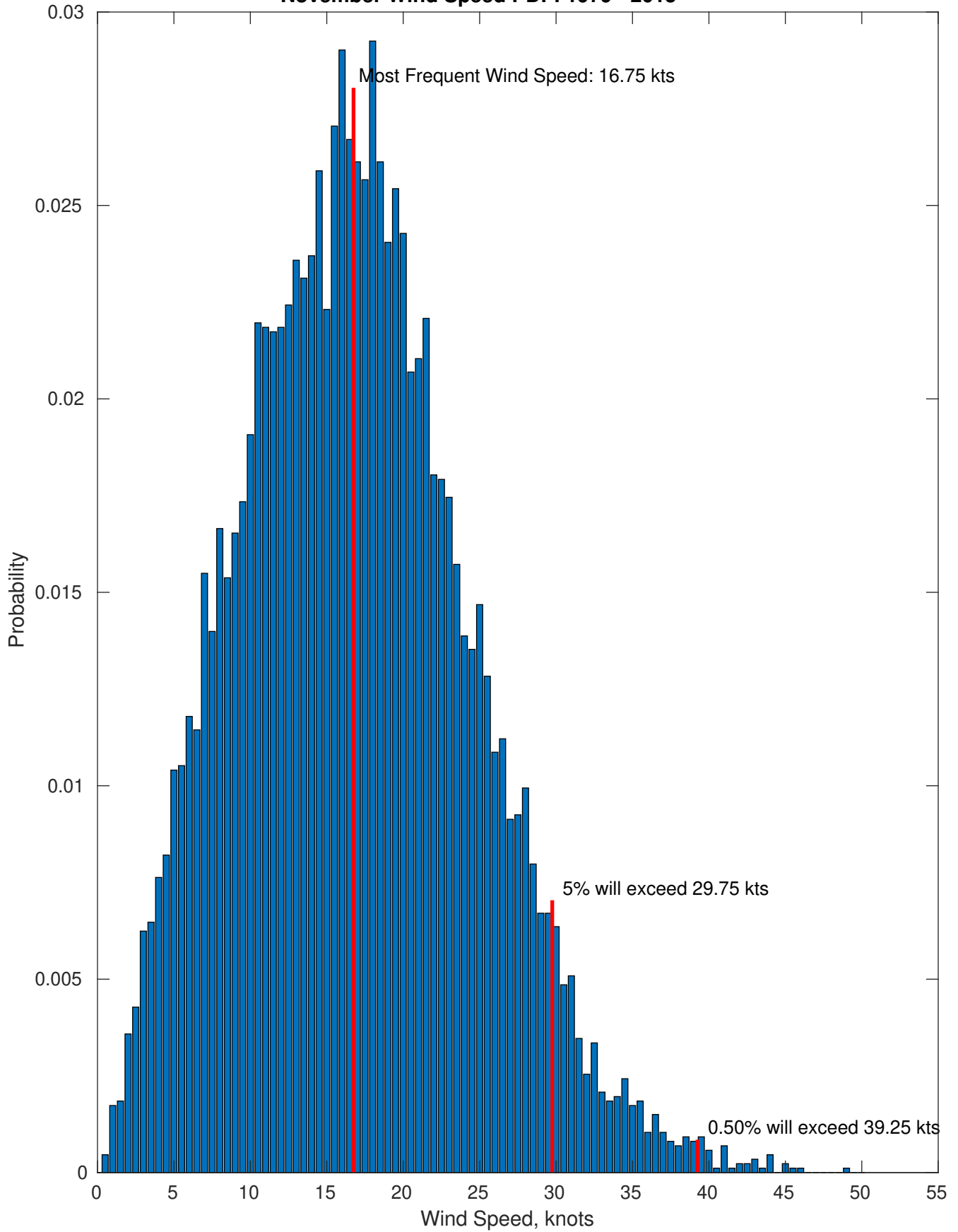
Wind-Sea: 41.28%



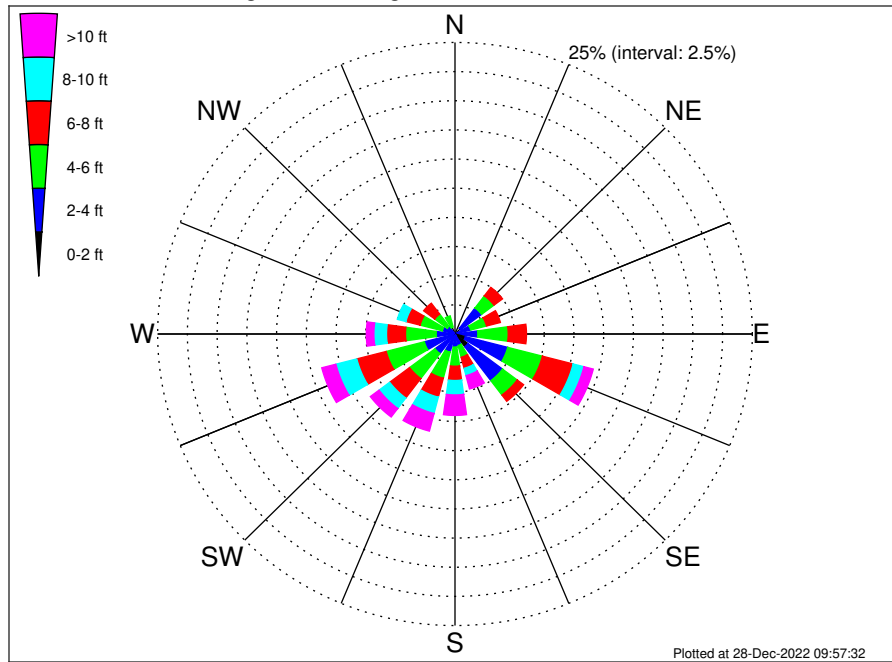
Swell: 58.72%



November Wind Speed PDF: 1979 - 2015



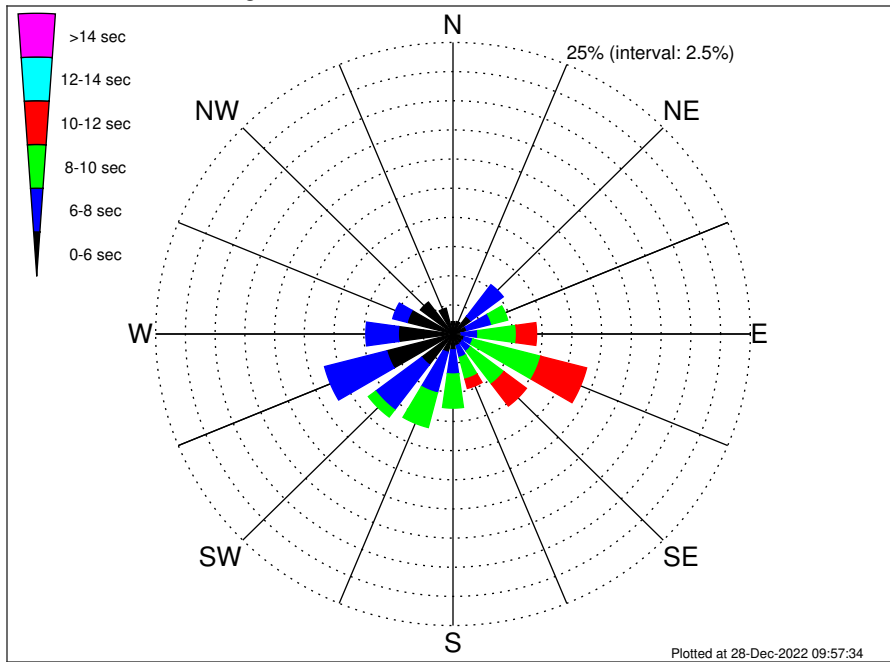
OCS A-0522 Climatological WaveHeight Rose for November: 1979 - 2015



Joint Frequency Distribution Table

	N	NNE	NE	ENE	E	ESE	SE	SSE	S	SSW	SW	WSW	W	WNW	NW	NNW	Total
calm	•	•	0.01	•	•	0.07	0.08	0.01	•	0.02	0.01	•	•	•	•	•	0.21
1 - 2 ft	0.02	0.06	0.60	0.09	0.29	0.83	1.28	0.09	0.18	0.13	0.24	0.32	0.15	0.09	0.08	0.01	4.49
2 - 4 ft	0.40	0.39	2.18	1.27	1.63	3.68	3.64	0.91	0.94	1.46	1.85	2.34	1.43	1.01	0.73	0.60	24.46
4 - 6 ft	0.49	0.35	1.31	1.38	2.55	3.02	1.55	1.04	1.64	2.31	2.68	3.32	2.58	1.93	1.33	0.99	28.46
6 - 8 ft	0.10	0.21	0.90	1.20	1.54	2.67	0.67	0.98	1.23	1.68	2.09	2.55	1.60	1.24	1.17	0.45	20.28
8 - 10 ft	0.08	0.17	0.58	0.43	0.58	0.94	0.57	0.65	1.24	1.45	1.12	1.82	1.06	0.74	0.30	0.22	11.93
10 - 12 ft	•	0.03	0.16	0.20	0.28	0.39	0.18	0.54	0.73	0.91	0.53	0.72	0.36	0.20	0.12	0.03	5.39
12 - 14 ft	•	0.01	0.08	0.15	0.22	0.24	0.05	0.32	0.66	0.44	0.22	0.27	0.17	0.03	0.03	0.01	2.91
14 - 16 ft	•	0.01	0.03	0.01	0.01	0.10	0.05	0.16	0.27	0.14	0.13	0.17	0.08	•	•	0.01	1.18
16 - 18 ft	•	•	0.01	•	0.01	0.05	0.03	0.08	0.07	0.06	0.03	0.05	0.02	•	•	•	0.42
> 18 ft	•	0.01	•	0.02	0.02	0.02	0.06	0.07	0.03	0.01	•	0.02	•	•	•	•	0.28
Total	1.10	1.25	5.87	4.75	7.13	12.01	8.16	4.87	6.98	8.60	8.91	11.57	7.46	5.24	3.76	2.34	100.00

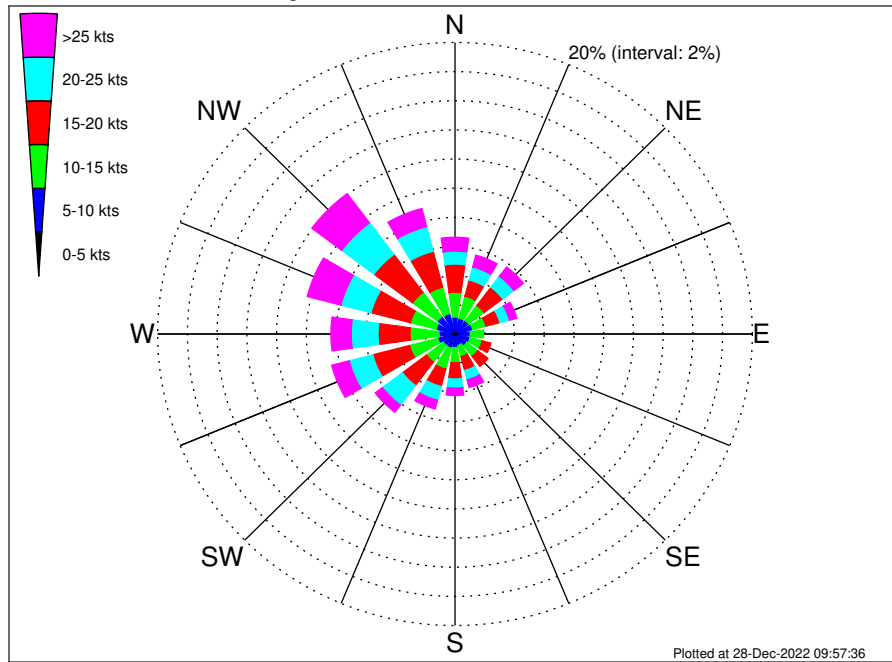
OCS A-0522 Climatological WavePeriod Rose for November: 1979 - 2015



Joint Frequency Distribution Table

	N	NNE	NE	ENE	E	ESE	SE	SSE	S	SSW	SW	WSW	W	WNW	NW	NNW	Total
calm	•	•	•	•	•	•	•	•	•	•	•	•	•	•	•	•	•
1 - 2 sec	•	•	•	•	•	•	•	•	•	•	•	•	•	•	•	•	•
2 - 4 sec	0.16	0.20	0.10	0.13	0.14	0.17	0.28	0.30	0.28	0.25	0.25	0.42	0.46	0.20	0.34	0.29	3.97
4 - 6 sec	0.90	0.91	1.79	1.08	0.57	0.81	0.69	0.73	1.08	1.38	3.05	5.34	4.14	3.79	3.10	2.00	31.35
6 - 8 sec	0.03	0.13	3.40	2.16	1.39	0.74	0.87	1.05	2.08	3.60	4.84	5.40	2.73	1.25	0.32	0.05	30.03
8 - 10 sec	•	0.01	0.58	1.39	3.25	5.91	3.53	1.92	2.92	3.06	0.76	0.42	0.13	•	•	•	23.87
10 - 12 sec	•	•	•	•	1.69	3.98	2.37	0.82	0.61	0.31	•	•	•	•	•	•	9.78
12 - 14 sec	•	•	•	•	0.10	0.28	0.36	0.05	0.01	•	•	•	•	•	•	•	0.80
14 - 16 sec	•	•	•	•	•	0.13	0.07	•	•	•	•	•	•	•	•	•	0.20
18 - 20 sec	•	•	•	•	•	•	•	•	•	•	•	•	•	•	•	•	•
22 - 24 sec	•	•	•	•	•	•	•	•	•	•	•	•	•	•	•	•	•
Total	1.10	1.25	5.87	4.75	7.13	12.01	8.16	4.87	6.98	8.60	8.91	11.57	7.46	5.24	3.76	2.34	100.00

OCS A-0522 Climatological Wind Rose for November: 1979 - 2015



Joint Frequency Distribution Table

	N	NNE	NE	ENE	E	ESE	SE	SSE	S	SSW	SW	WSW	W	WNW	NW	NNW	Total
calm	•	•	•	0.01	•	•	•	•	•	•	•	0.01	•	•	0.01	0.01	0.05
0 - 5 kts	0.25	0.28	0.28	0.30	0.32	0.27	0.27	0.20	0.25	0.18	0.22	0.21	0.27	0.27	0.28	0.16	4.00
5 - 10 kts	0.91	0.84	0.88	0.91	0.71	0.79	0.73	0.61	0.68	0.81	0.76	0.98	0.81	1.05	1.20	1.27	13.95
10 - 15 kts	1.70	1.56	1.29	0.92	0.89	0.84	0.91	0.80	1.04	1.49	1.42	1.95	1.95	1.78	2.08	1.87	22.52
15 - 20 kts	1.93	1.14	1.57	0.97	0.49	0.60	0.87	0.98	1.11	1.24	2.02	2.55	2.15	2.74	3.26	2.54	26.17
20 - 25 kts	0.89	0.92	0.94	0.66	0.32	0.30	0.50	0.66	0.62	0.97	1.68	1.64	1.80	2.09	2.72	1.75	18.46
25 - 30 kts	0.64	0.45	0.46	0.36	0.07	0.17	0.30	0.37	0.35	0.42	0.54	0.88	0.82	1.29	1.77	1.04	9.93
30 - 35 kts	0.21	0.24	0.20	0.12	0.05	0.05	0.06	0.08	0.14	0.18	0.06	0.25	0.37	0.61	0.62	0.16	3.40
35 - 40 kts	0.07	0.09	0.07	0.03	0.05	0.02	•	0.08	0.01	0.01	0.01	0.08	0.10	0.32	0.12	0.06	1.13
40 - 45 kts	0.01	0.02	0.02	•	•	0.01	•	0.01	0.01	•	•	•	0.07	0.10	•	0.02	0.29
45 - 50 kts	0.02	0.02	0.05	•	•	•	•	•	•	•	•	•	•	•	•	•	0.09
Total	6.64	5.58	5.76	4.29	2.89	3.05	3.63	3.79	4.22	5.31	6.72	8.57	8.35	10.27	12.06	8.89	100.00