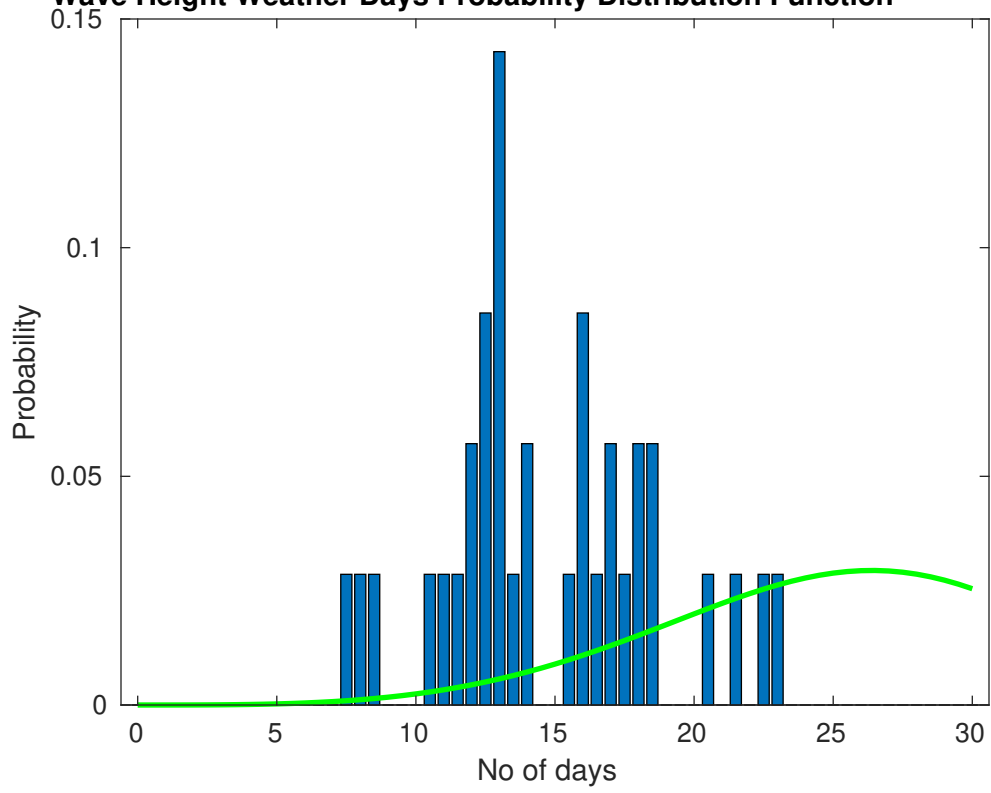
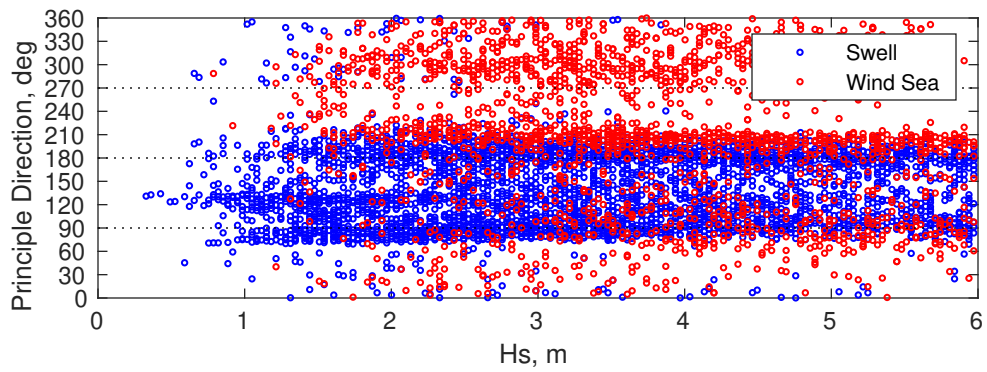
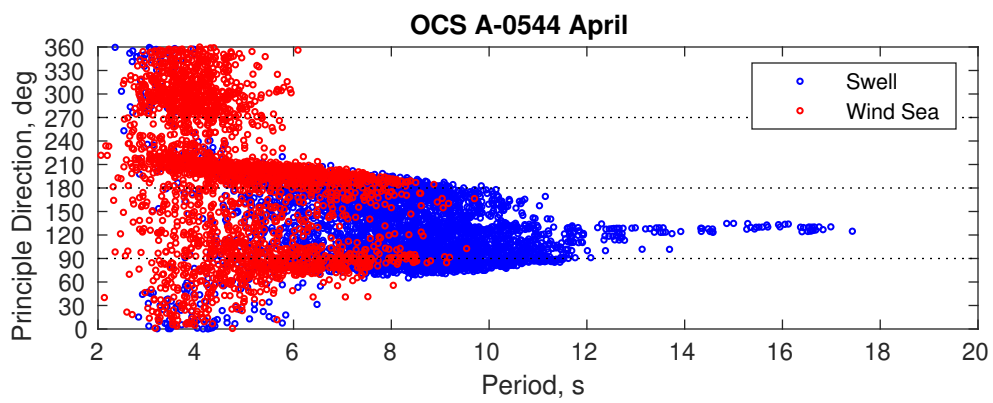
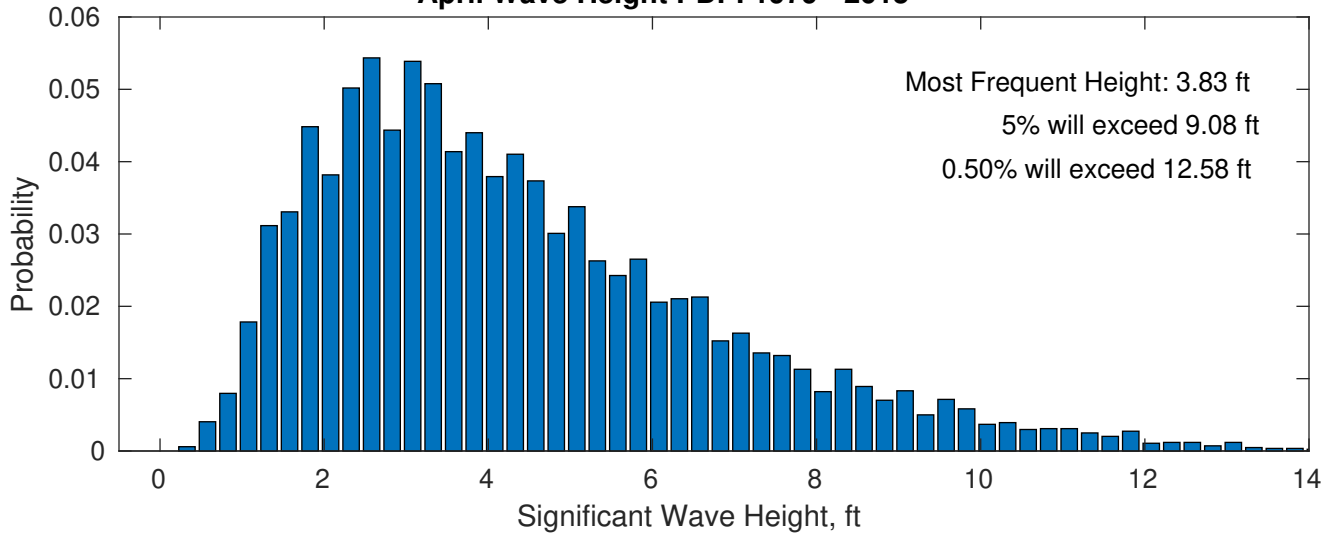


Wave Height Weather Days Probability Distribution Function

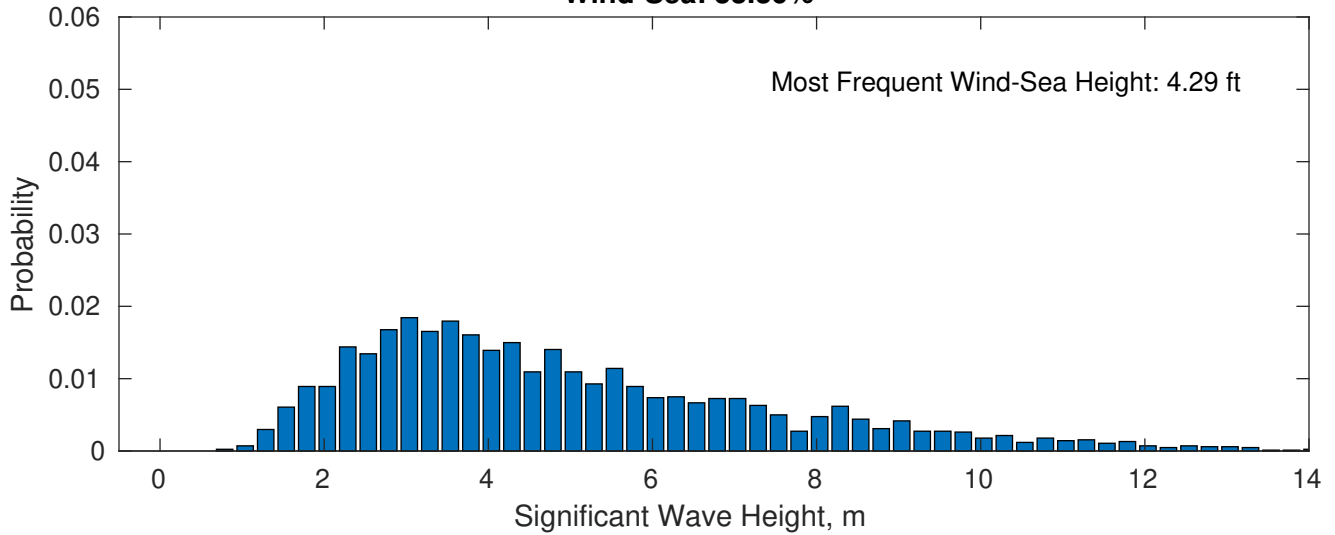




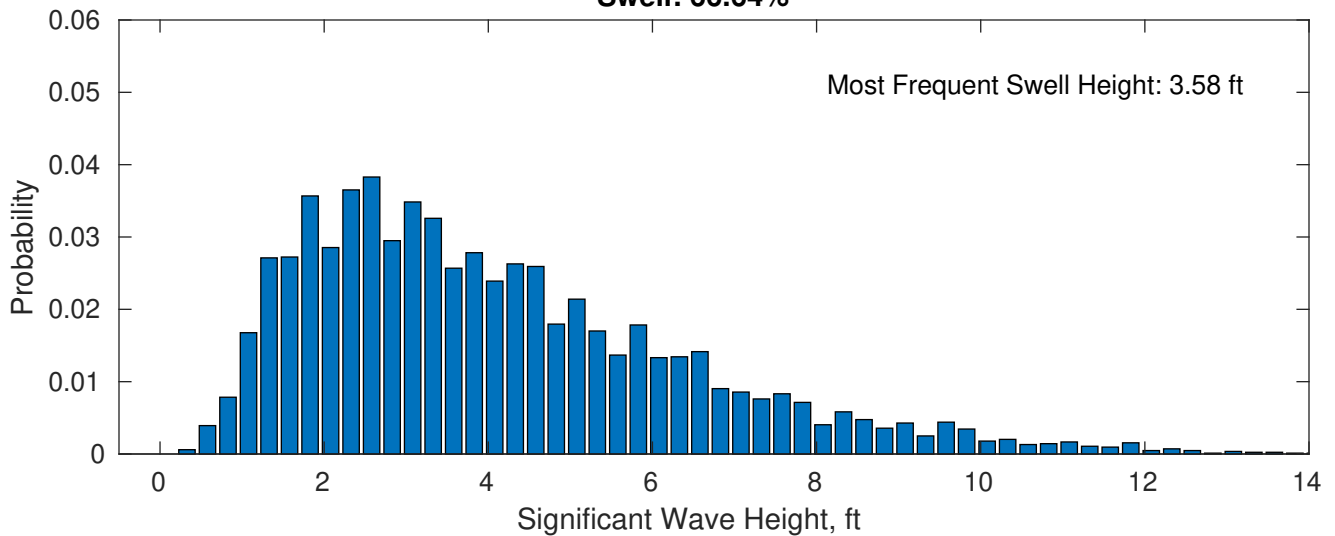
April Wave Height PDF: 1979 - 2015



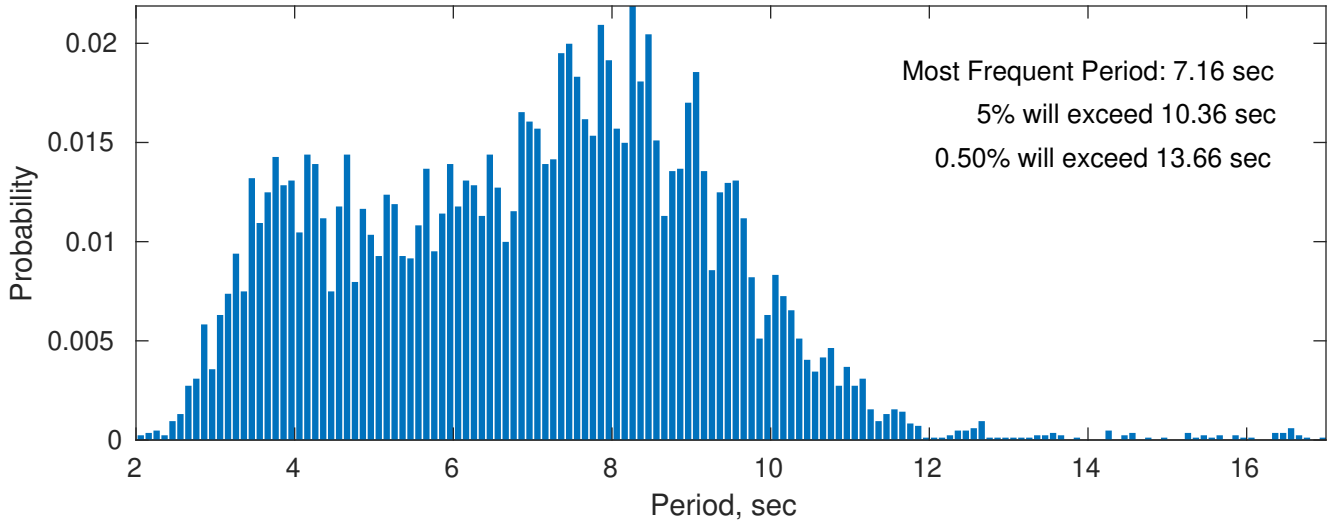
Wind-Sea: 33.36%



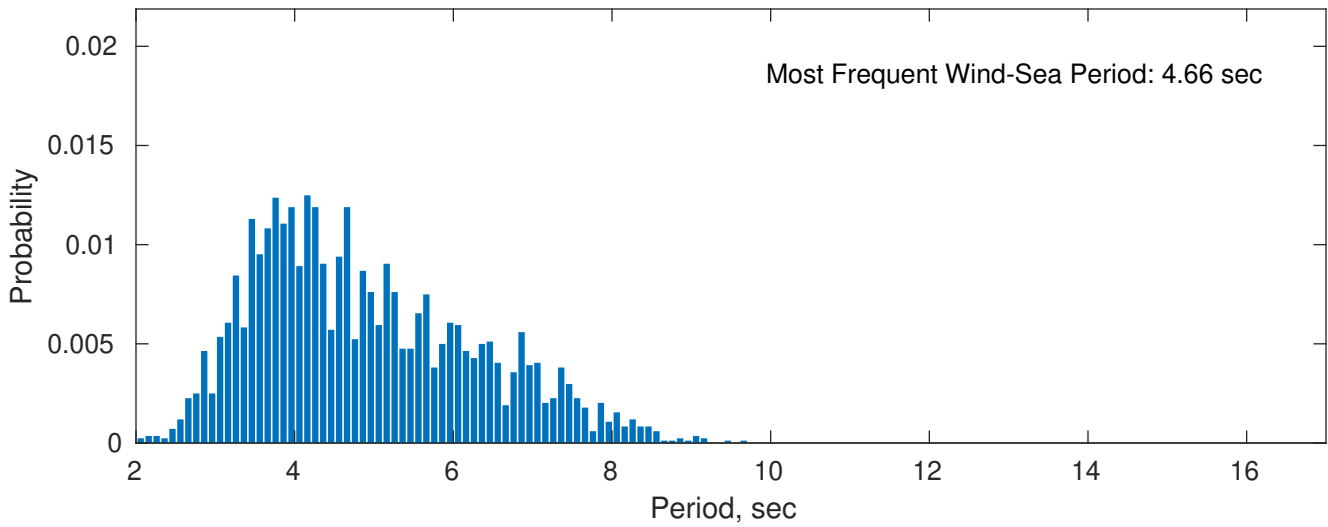
Swell: 66.64%



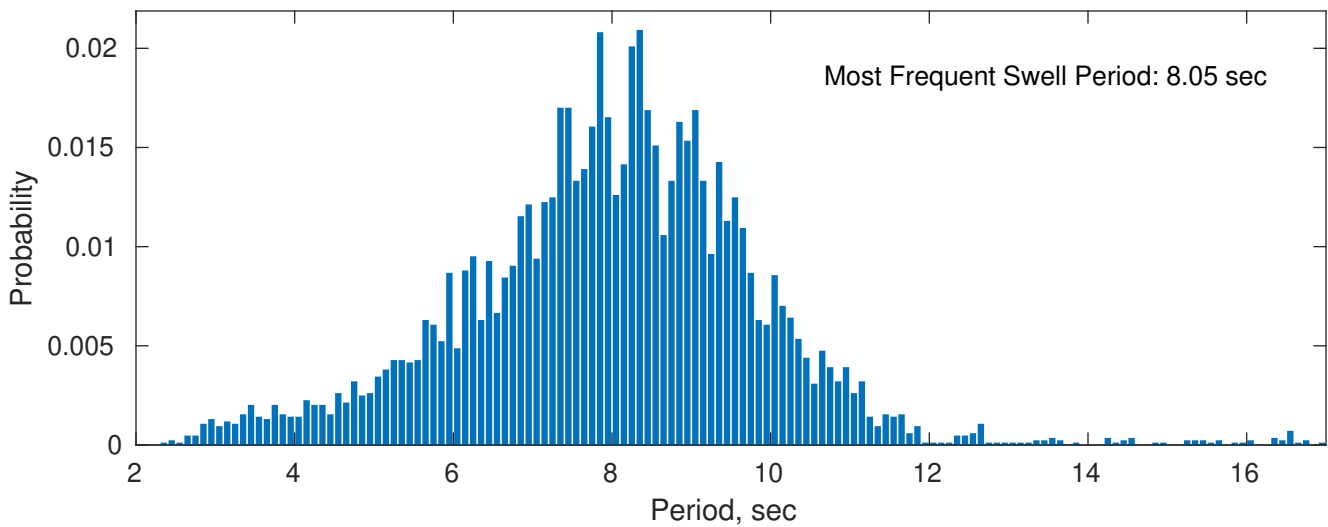
April Peak Wave Period PDF: 1979 - 2015



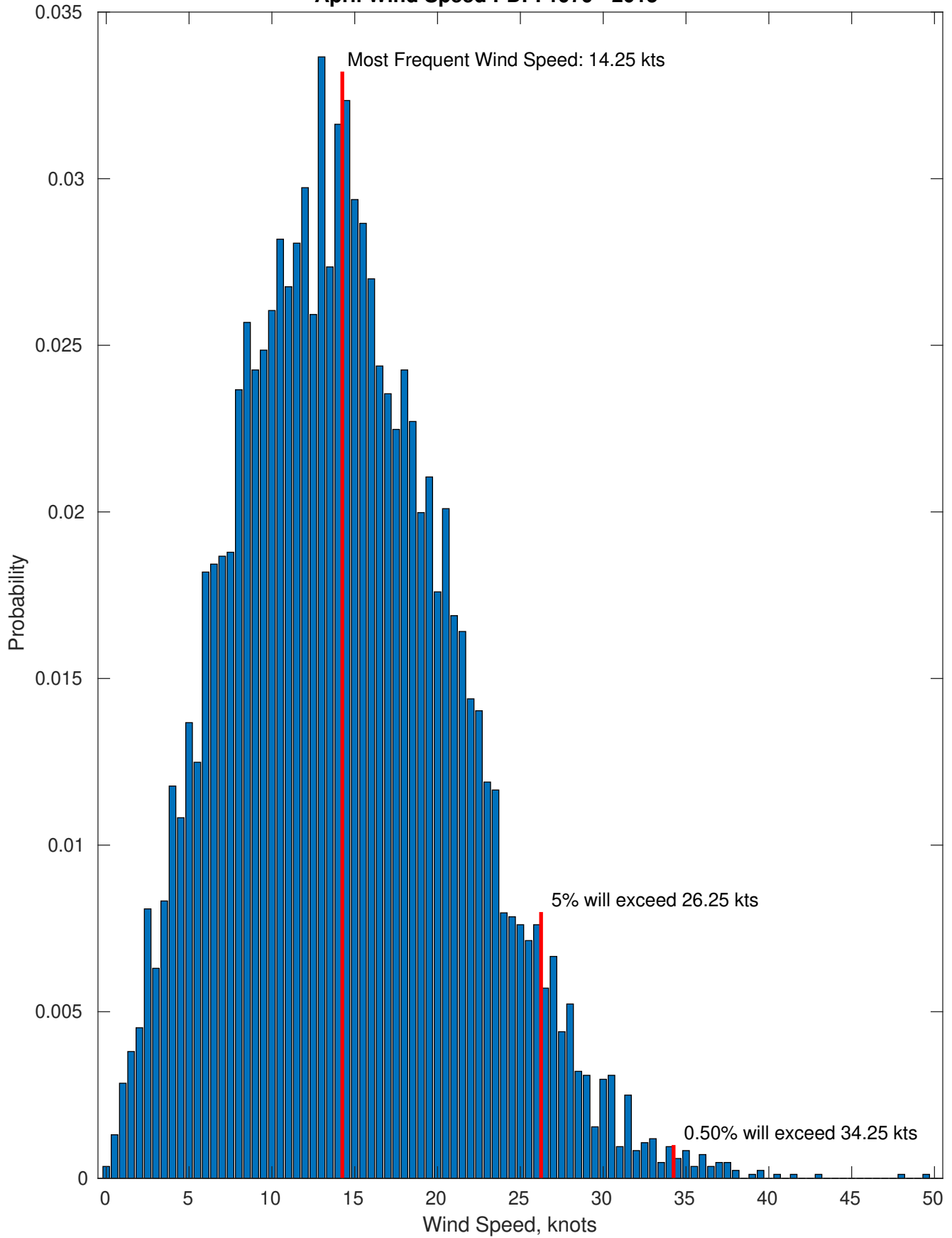
Wind-Sea: 33.36%



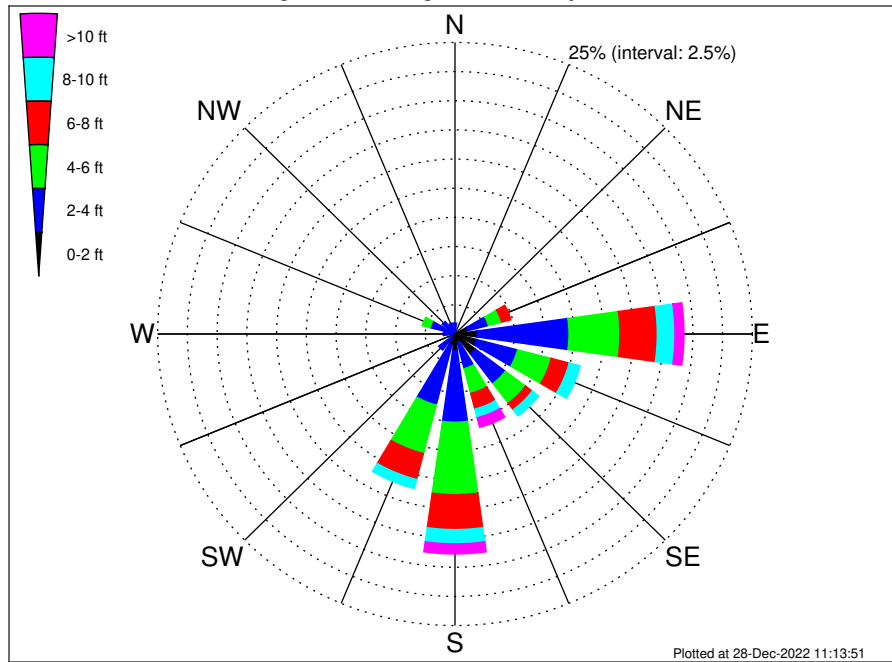
Swell: 66.64%



April Wind Speed PDF: 1979 - 2015



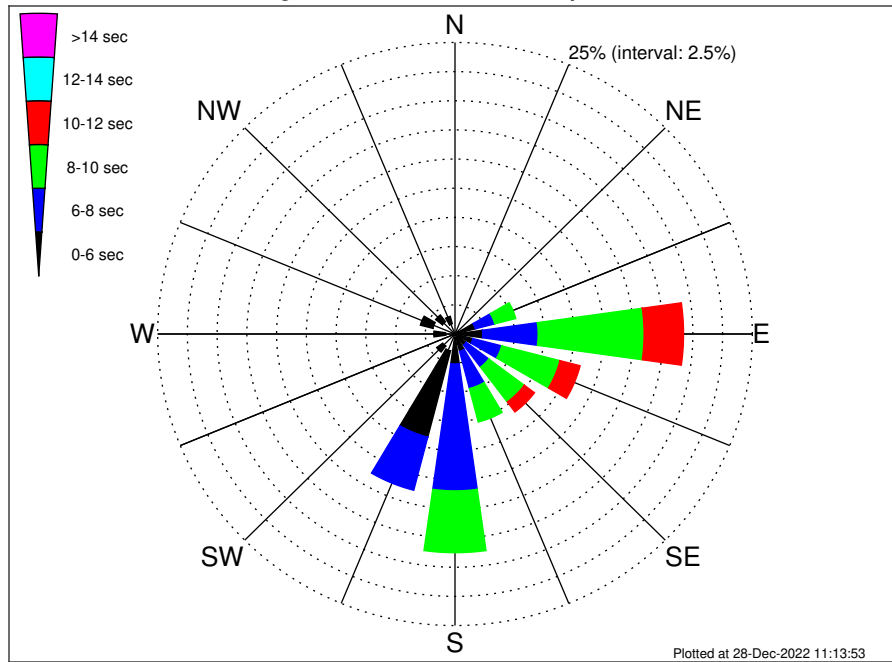
OCS A-0544 Climatological WaveHeight Rose for April: 1979 - 2015



Joint Frequency Distribution Table

	N	NNE	NE	ENE	E	ESE	SE	SSE	S	SSW	SW	WSW	W	WNW	NW	NNW	Total
calm	•	•	0.02	0.10	0.06	0.14	0.36	0.05	0.07	0.06	0.01	0.01	•	0.05	•	•	0.93
1 - 2 ft	0.13	0.19	0.11	1.03	1.81	1.72	1.78	0.70	1.38	0.94	0.36	0.12	0.18	0.36	0.30	0.14	11.25
2 - 4 ft	0.81	0.43	0.43	1.77	7.72	3.57	3.16	2.32	6.11	5.29	1.36	0.40	0.82	1.76	1.06	0.83	37.84
4 - 6 ft	0.27	0.17	0.18	1.14	4.28	2.93	2.13	2.19	6.21	4.29	0.18	0.15	0.61	0.68	0.52	0.51	26.44
6 - 8 ft	0.02	0.11	0.11	0.81	3.14	1.56	0.70	1.39	3.00	2.30	0.06	0.04	0.13	0.14	0.08	0.08	13.66
8 - 10 ft	0.01	0.02	0.04	0.42	1.49	0.96	0.68	0.77	1.22	0.80	•	0.01	0.05	0.02	0.08	•	6.58
10 - 12 ft	0.01	0.01	•	0.05	0.58	0.20	0.17	0.51	0.67	0.21	•	•	•	•	•	•	2.41
12 - 14 ft	•	•	0.02	0.01	0.18	0.05	0.07	0.21	0.17	0.01	•	•	•	•	•	•	0.73
14 - 16 ft	•	•	0.01	•	•	•	•	0.07	0.04	•	•	•	•	•	•	•	0.12
16 - 18 ft	•	•	•	•	•	•	•	0.05	•	•	•	•	•	•	•	•	0.05
> 18 ft	•	•	•	•	•	•	•	•	•	•	•	•	•	•	•	•	•
Total	1.26	0.93	0.92	5.33	19.25	11.13	9.05	8.26	18.86	13.90	1.96	0.74	1.78	3.01	2.05	1.57	100.00

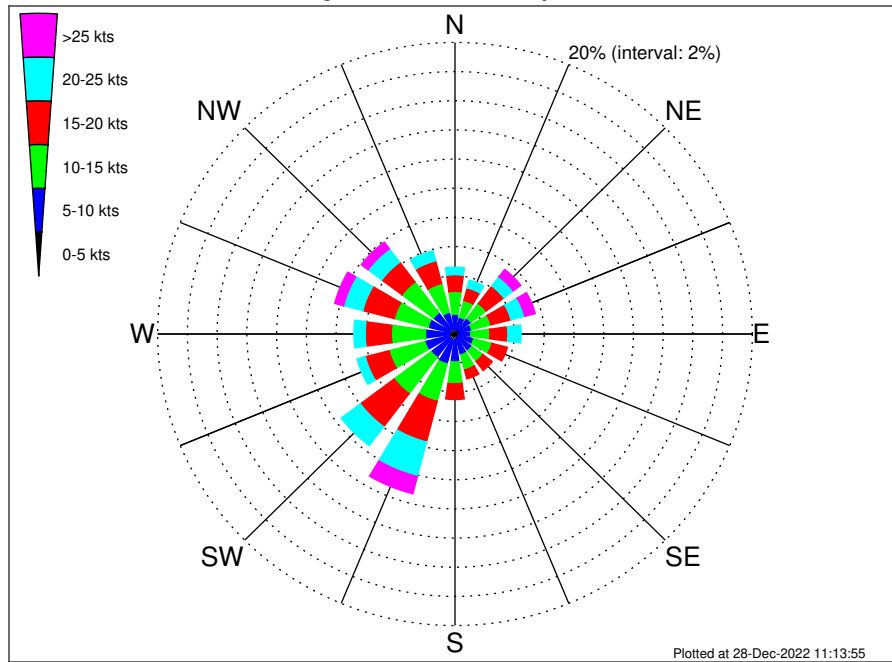
OCS A-0544 Climatological WavePeriod Rose for April: 1979 - 2015



Joint Frequency Distribution Table

	N	NNE	NE	ENE	E	ESE	SE	SSE	S	SSW	SW	WSW	W	WNW	NW	NNW	Total
calm	•	•	•	•	•	•	•	•	•	•	•	•	•	•	•	•	•
1 - 2 sec	•	•	•	•	•	•	•	•	•	•	•	•	•	•	•	•	•
2 - 4 sec	0.86	0.54	0.42	0.31	0.37	0.26	0.23	0.39	0.32	1.49	1.30	0.43	0.80	1.93	1.32	0.90	11.84
4 - 6 sec	0.39	0.38	0.42	1.45	1.96	1.30	0.96	1.14	2.25	7.65	0.64	0.31	0.99	1.08	0.73	0.67	22.31
6 - 8 sec	0.01	0.01	0.07	1.69	4.66	2.50	2.37	3.29	10.88	4.71	0.02	•	•	•	•	•	30.22
8 - 10 sec	•	•	0.01	1.83	8.91	5.07	3.75	2.97	5.30	0.06	•	•	•	•	•	•	27.90
10 - 12 sec	•	•	•	0.05	3.32	1.75	1.07	0.46	0.11	•	•	•	•	•	•	•	6.75
12 - 14 sec	•	•	•	•	0.04	0.25	0.21	•	•	•	•	•	•	•	•	•	0.50
14 - 16 sec	•	•	•	•	•	0.01	0.25	•	•	•	•	•	•	•	•	•	0.26
18 - 20 sec	•	•	•	•	•	•	0.21	•	•	•	•	•	•	•	•	•	0.21
22 - 24 sec	•	•	•	•	•	•	•	•	•	•	•	•	•	•	•	•	•
Total	1.26	0.93	0.92	5.33	19.25	11.13	9.05	8.26	18.86	13.90	1.96	0.74	1.78	3.01	2.05	1.57	100.00

OCS A-0544 Climatological Wind Rose for April: 1979 - 2015



Joint Frequency Distribution Table

	N	NNE	NE	ENE	E	ESE	SE	SSE	S	SSW	SW	WSW	W	WNW	NW	NNW	Total
calm	•	•	•	•	•	0.07	0.01	•	•	•	0.02	•	0.02	•	0.02	0.01	0.17
0 - 5 kts	0.36	0.29	0.40	0.29	0.27	0.29	0.27	0.39	0.37	0.46	0.38	0.46	0.38	0.36	0.34	0.33	5.65
5 - 10 kts	1.00	0.90	0.94	0.88	0.78	0.95	1.14	1.09	1.55	1.65	1.61	1.63	1.58	1.52	1.45	1.19	19.87
10 - 15 kts	1.57	1.19	1.27	1.33	1.28	1.26	0.92	1.06	1.50	2.65	3.12	2.49	2.30	2.34	2.65	2.05	28.97
15 - 20 kts	1.14	0.89	1.50	1.39	1.21	1.07	0.80	0.63	1.08	2.88	2.84	1.65	1.76	2.19	1.70	1.61	24.34
20 - 25 kts	0.51	0.55	0.80	0.96	0.89	0.48	0.25	0.36	0.49	2.45	1.62	0.57	0.76	1.33	1.15	0.71	13.88
25 - 30 kts	0.19	0.24	0.45	0.57	0.36	0.21	0.19	0.24	0.21	0.99	0.24	0.04	0.12	0.48	0.37	0.33	5.22
30 - 35 kts	0.07	0.07	0.17	0.13	0.05	0.10	0.12	0.08	0.06	0.19	•	0.01	0.07	0.13	0.11	0.11	1.46
35 - 40 kts	0.06	0.01	0.01	0.02	0.04	0.01	0.04	0.01	•	0.05	•	•	0.01	0.01	0.10	0.01	0.38
40 - 45 kts	0.02	•	•	•	•	•	•	•	•	•	•	•	•	•	•	0.01	0.04
45 - 50 kts	0.02	•	•	•	•	•	•	•	•	•	•	•	•	•	•	•	0.02
Total	4.95	4.14	5.54	5.58	4.89	4.44	3.73	3.86	5.26	11.32	9.82	6.85	7.00	8.36	7.90	6.36	100.00