

## OCS A-0544 - July

Latitude: 40.24 N Longitude: 73.08 W

### Weather Days

Wave Height > 4.0 ft Mean: 8.1 days Range: 4.8 - 11.5 days p50:8.5 days p75:6 days p90:5 days

Wave Height > 5.0 ft Mean: 3.4 days Range: 1.4 - 5.4 days p50:4 days p75:2 days p90:1 days

Wave Height > 6.0 ft Mean: 1.4 days Range: 0.2 - 2.7 days p50:1.5 days p75:0.5 days p90:0.5 days

Wind Speed > 20.0 knots Mean: 1.8 days Range: 0.8 - 2.7 days p50:2 days p75:1 days p90:0.5 days

Wind Speed > 25.0 knots Mean: 0.2 days Range: 0.0 - 0.5 days p50:0.5 days p75:0.5 days p90:0.5 days

Wind Speed > 30.0 knots Mean: 0.0 days Range: 0.0 - 0.1 days p50:0.5 days p75:0.5 days p90:0.5 days

### Working Window Probability

Wave Height < 4.0 ft                      3 days or longer: 46%  
    5 days or longer: 14%  
    7 days or longer: 7%

Wave Height < 5.0 ft                      3 days or longer: 68%  
    5 days or longer: 34%  
    7 days or longer: 23%

Wave Height < 6.0 ft                      3 days or longer: 80%  
    5 days or longer: 56%  
    7 days or longer: 47%

### Waves

Mean Height: 2 - 4 ft

The wave heights will occasionally reach 8 - 10 ft, but rarely higher.

Mean Period: 6 - 8 sec

The wave periods will occasionally reach 12 - 14 sec, but rarely longer.

Principle Direction, from: S

WindSea/Swell: 18% / 82%

### Winds

Mean Speed: 10 - 15 kts

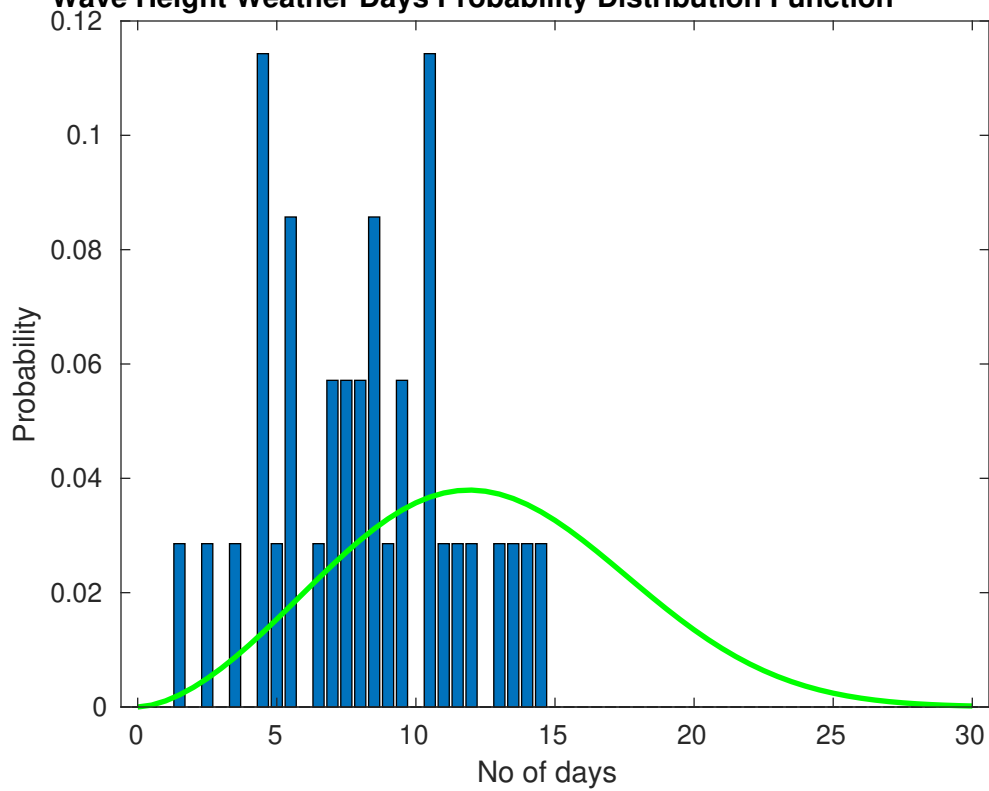
The winds will occasionally reach 25 - 30 kts, but rarely greater.

Principle Direction, from: SSW

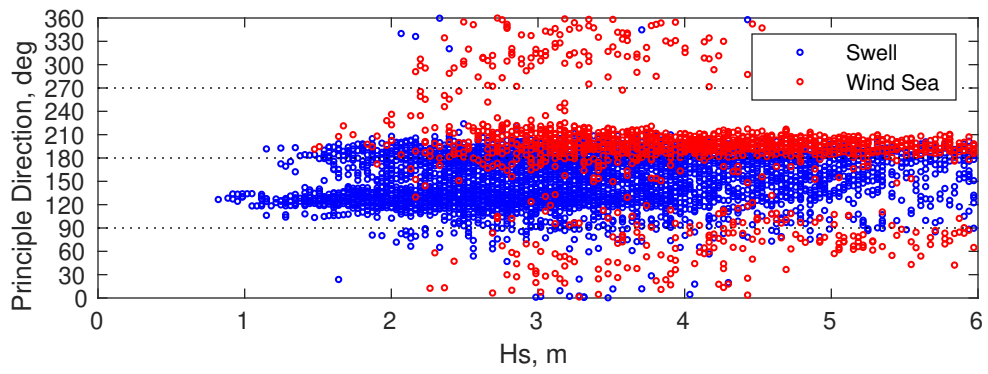
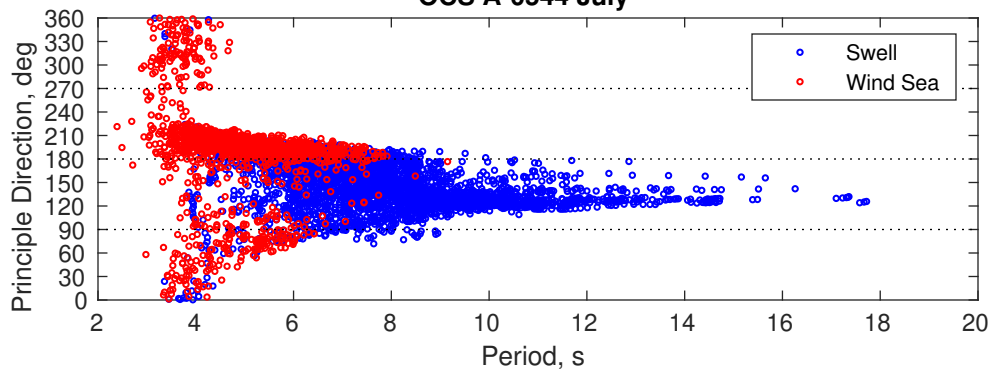
### Severe Storms

Severe storms with gale force winds and extreme waves are not expected during this month.

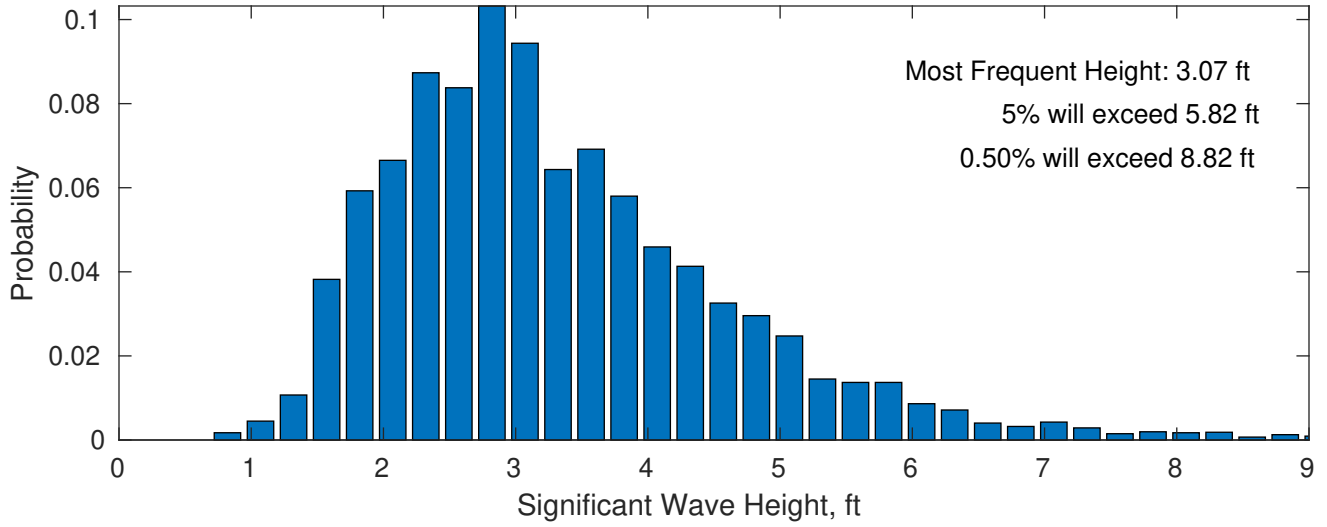
**Wave Height Weather Days Probability Distribution Function**



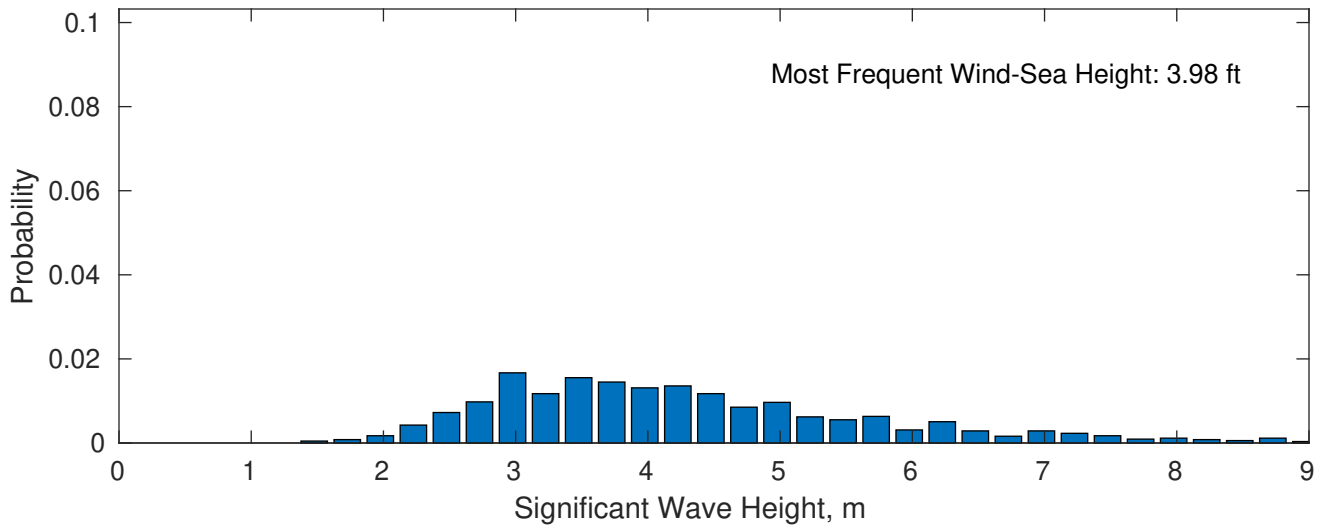
OCS A-0544 July



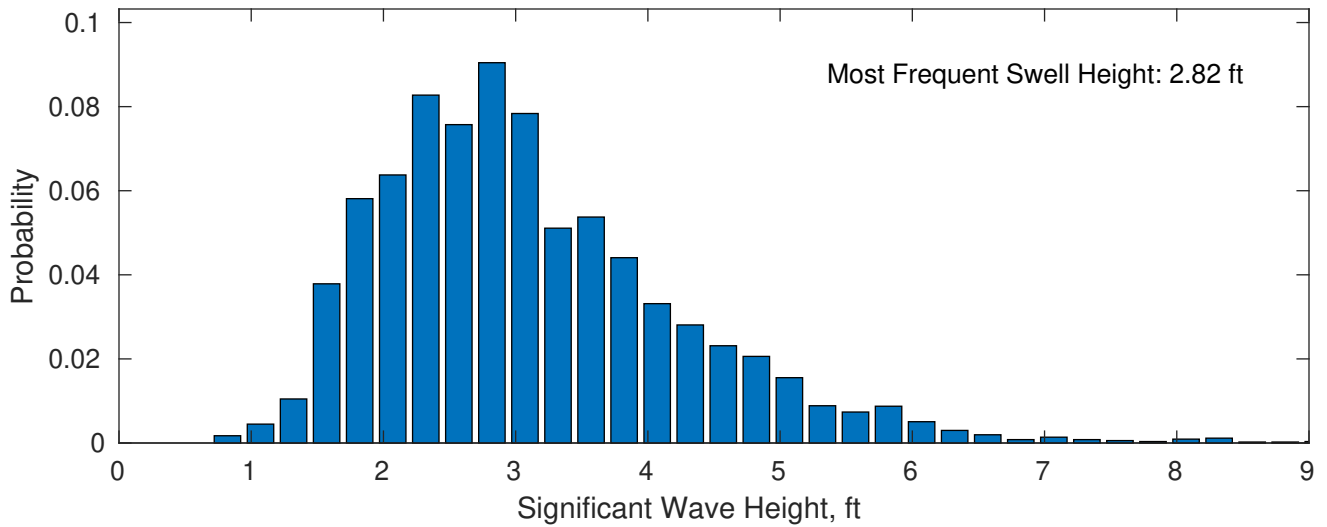
**July Wave Height PDF: 1979 - 2015**



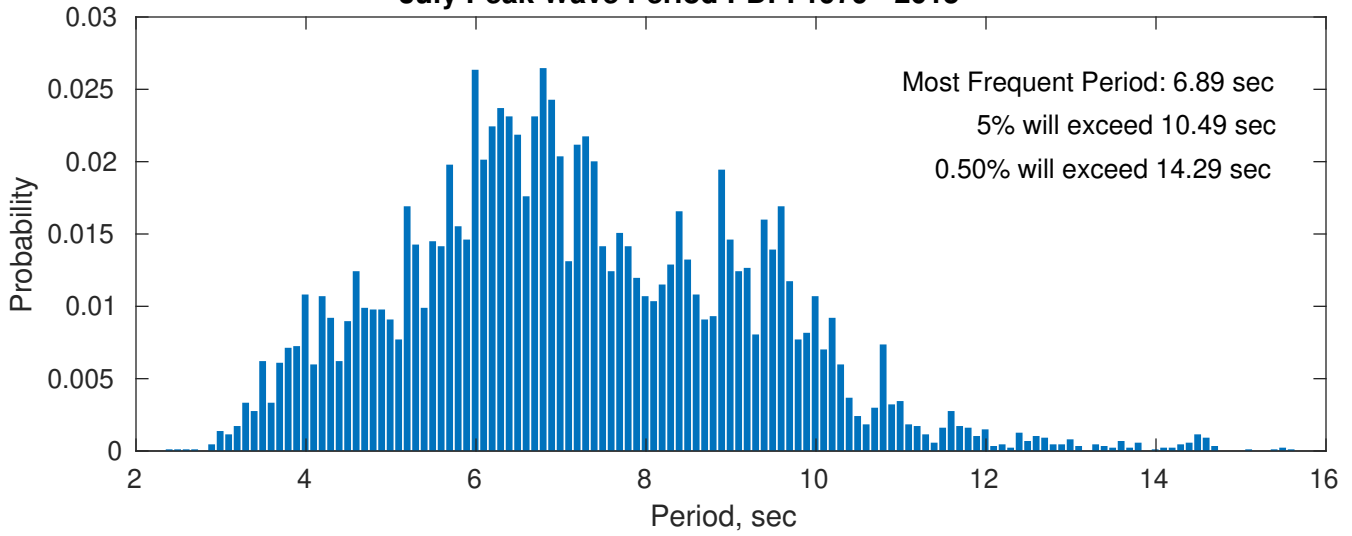
**Wind-Sea: 18.43%**



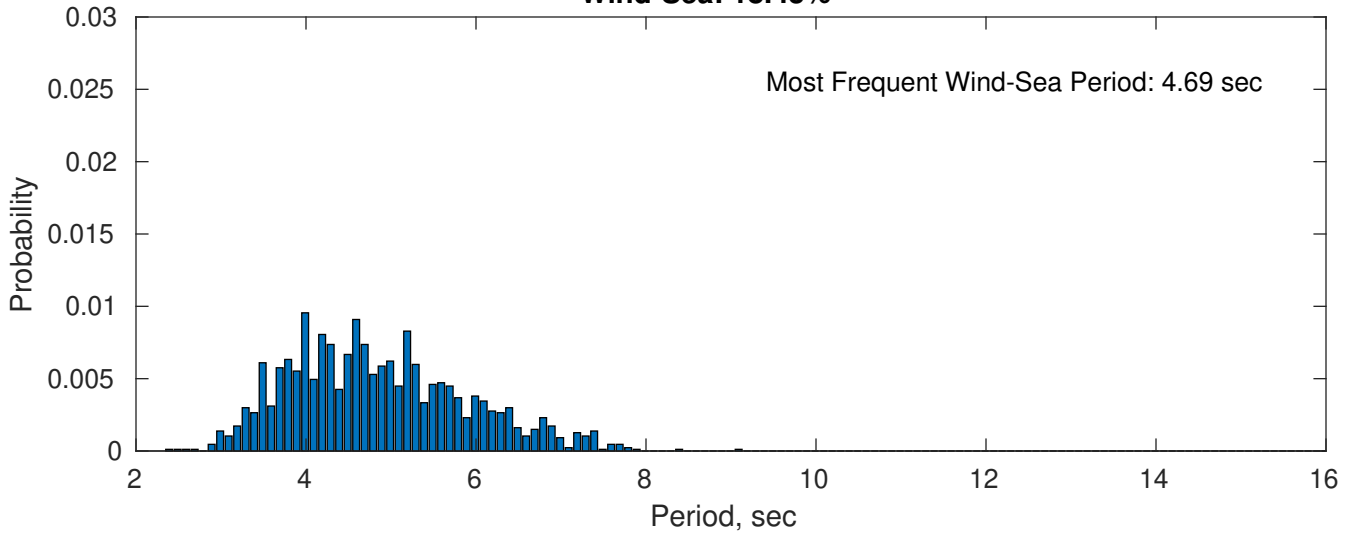
**Swell: 81.57%**



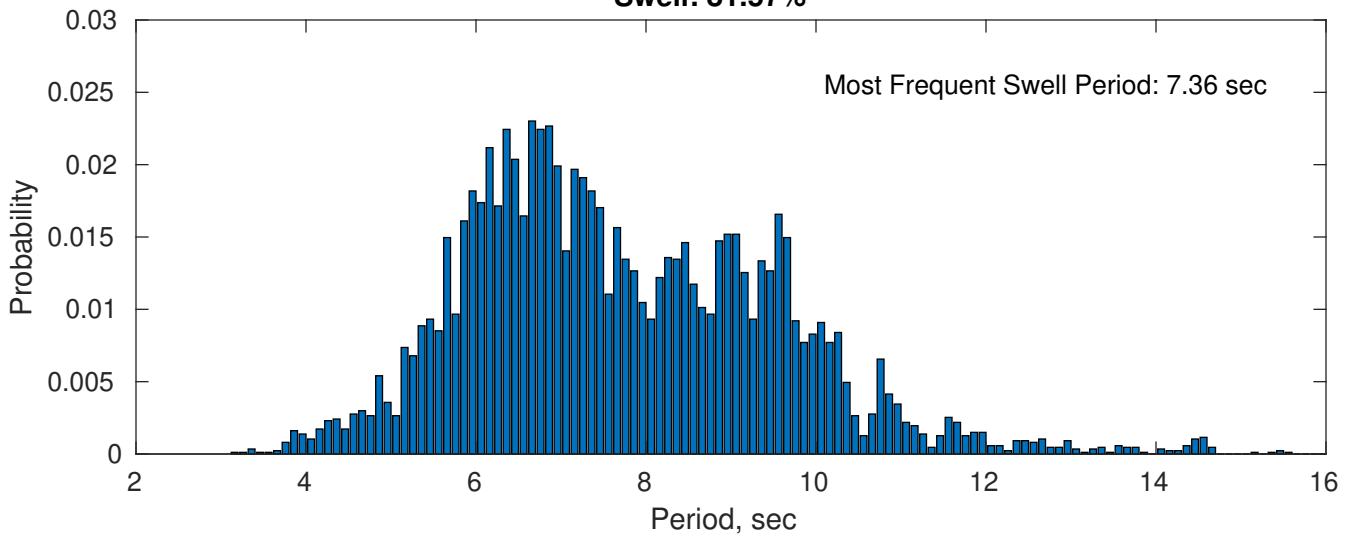
### July Peak Wave Period PDF: 1979 - 2015



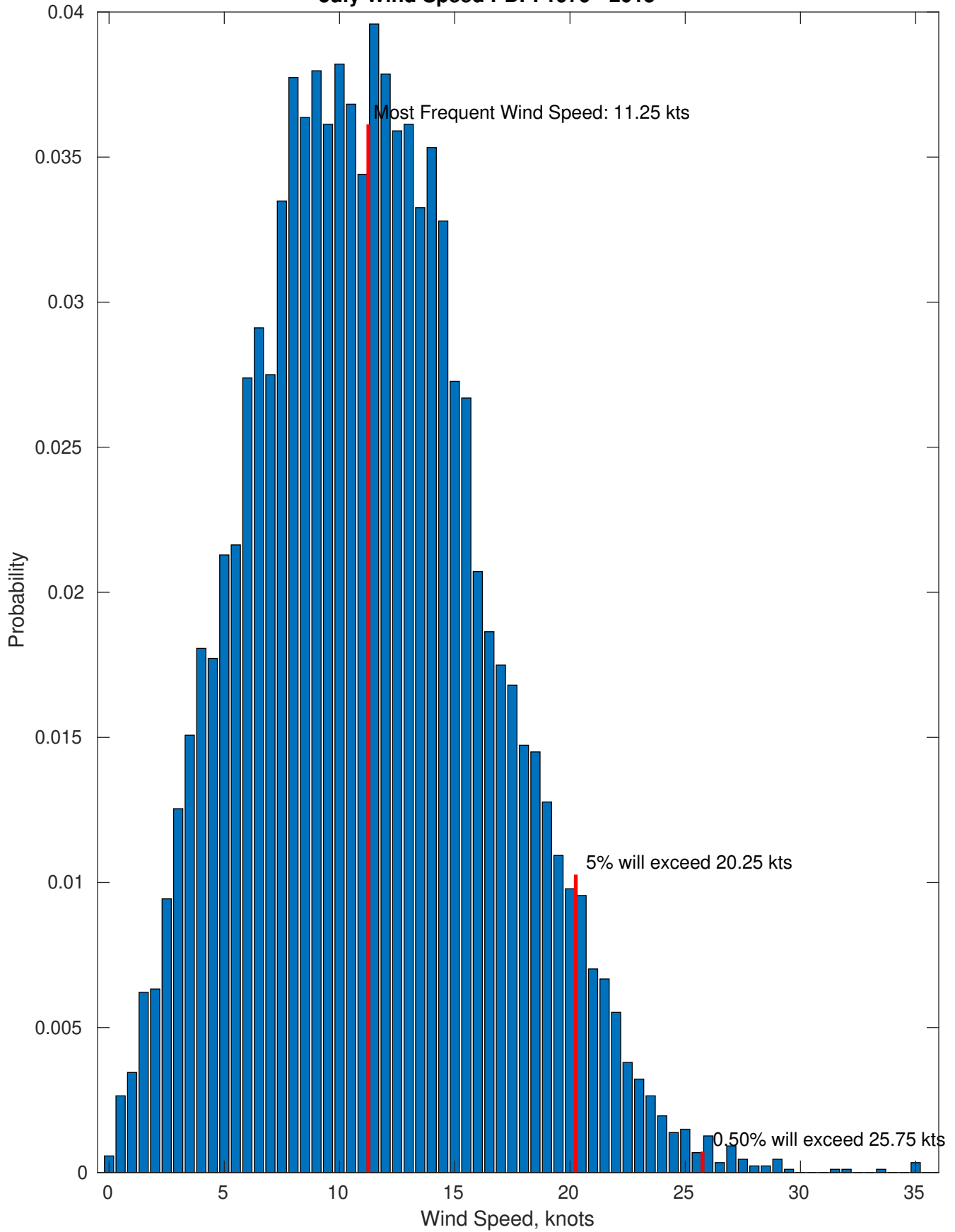
### Wind-Sea: 18.43%



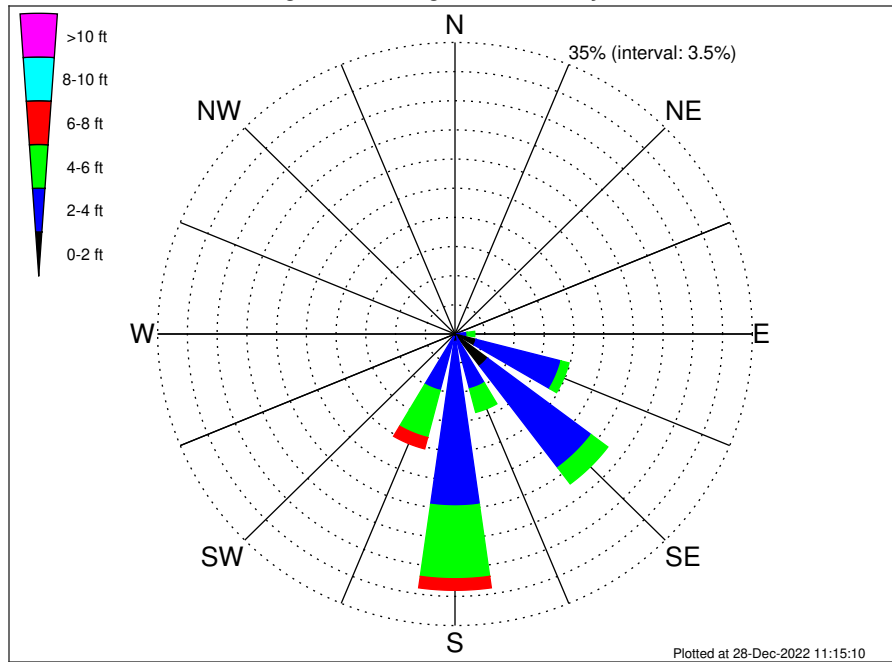
### Swell: 81.57%



July Wind Speed PDF: 1979 - 2015



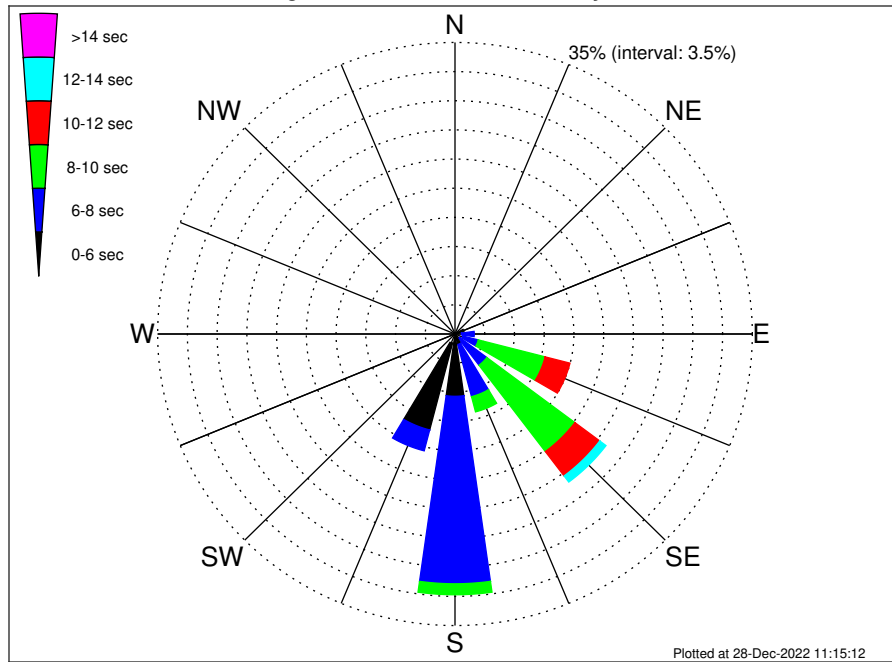
OCS A-0544 Climatological WaveHeight Rose for July: 1979 - 2015



Joint Frequency Distribution Table

	N	NNE	NE	ENE	E	ESE	SE	SSE	S	SSW	SW	WSW	W	WNW	NW	NNW	Total
calm	•	•	•	•	•	•	0.13	•	•	•	•	•	•	•	•	•	0.13
1 - 2 ft	•	0.01	•	•	0.02	2.58	4.68	0.33	0.89	0.33	0.02	•	•	•	•	•	8.87
2 - 4 ft	0.35	0.24	0.24	0.47	1.40	10.32	15.28	6.47	19.76	6.66	0.86	0.08	0.10	0.20	0.40	0.30	63.14
4 - 6 ft	0.05	0.07	0.10	0.61	0.91	0.97	2.44	2.92	8.73	5.85	0.10	•	0.05	0.03	0.12	0.08	23.03
6 - 8 ft	0.01	•	•	0.06	0.16	0.22	0.22	0.35	1.39	1.40	•	•	•	•	•	•	3.81
8 - 10 ft	•	•	•	0.01	0.05	0.01	0.07	0.02	0.54	0.22	•	•	•	•	•	•	0.92
10 - 12 ft	•	•	•	•	•	•	•	0.01	0.03	0.02	•	•	•	•	•	•	0.07
12 - 14 ft	•	•	•	•	•	•	•	•	•	•	•	•	•	•	•	•	•
14 - 16 ft	•	•	•	•	•	•	•	•	0.01	•	•	•	•	•	•	•	0.01
16 - 18 ft	•	•	•	•	•	•	•	•	0.01	•	•	•	•	•	•	•	0.01
> 18 ft	•	•	•	•	•	•	•	•	0.01	•	•	•	•	•	•	•	0.01
Total	0.40	0.32	0.35	1.15	2.54	14.10	22.82	10.10	31.38	14.49	0.99	0.08	0.15	0.23	0.52	0.38	100.00

OCS A-0544 Climatological WavePeriod Rose for July: 1979 - 2015

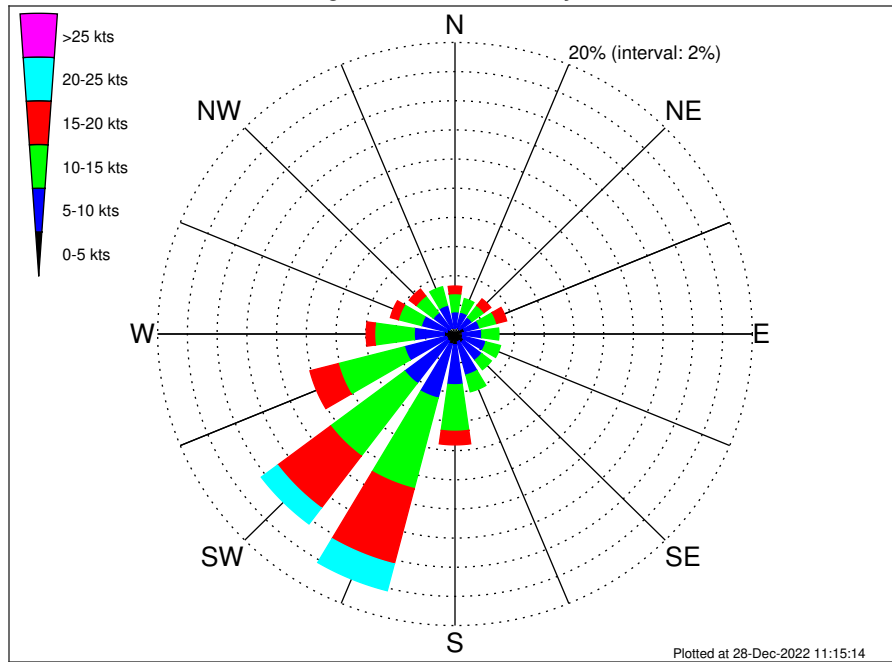


Joint Frequency Distribution Table

	N	NNE	NE	ENE	E	ENE	SE	SSE	S	SSW	SW	WSW	W	WNW	NW	NNW	Total
calm	•	•	•	•	•	•	•	•	•	•	•	•	•	•	•	•	•
1 - 2 sec	•	•	•	•	•	•	•	•	•	•	•	•	•	•	•	•	•
2 - 4 sec	0.31	0.20	0.15	0.08	0.06	0.14	0.10	0.09	0.38	1.15	0.61	0.08	0.10	0.18	0.44	0.30	4.37
4 - 6 sec	0.09	0.13	0.20	1.01	0.71	0.81	0.59	1.21	7.10	10.75	0.38	•	0.05	0.05	0.08	0.08	23.22
6 - 8 sec	•	•	•	0.05	1.50	1.90	4.00	6.47	22.51	2.59	•	•	•	•	•	•	39.01
8 - 10 sec	•	•	•	0.01	0.28	8.12	12.98	1.89	1.31	•	•	•	•	•	•	•	24.59
10 - 12 sec	•	•	•	•	•	3.01	3.66	0.38	0.07	•	•	•	•	•	•	•	7.12
12 - 14 sec	•	•	•	•	•	0.12	0.92	0.03	0.01	•	•	•	•	•	•	•	1.08
14 - 16 sec	•	•	•	•	•	•	0.43	0.03	•	•	•	•	•	•	•	•	0.46
18 - 20 sec	•	•	•	•	•	•	0.14	•	•	•	•	•	•	•	•	•	0.14
22 - 24 sec	•	•	•	•	•	•	•	•	•	•	•	•	•	•	•	•	•
Total	0.40	0.32	0.35	1.15	2.54	14.10	22.82	10.10	31.38	14.49	0.99	0.08	0.15	0.23	0.52	0.38	100.00



OCS A-0544 Climatological Wind Rose for July: 1979 - 2015



Joint Frequency Distribution Table

	N	NNE	NE	ENE	E	ESE	SE	SSE	S	SSW	SW	WSW	W	WNW	NW	NNW	Total
calm	•	0.03	0.01	0.07	0.01	•	0.05	0.02	0.02	0.03	•	0.01	0.03	•	0.01	0.01	0.32
0 - 5 kts	0.39	0.44	0.41	0.60	0.49	0.55	0.67	0.54	0.71	0.69	0.63	0.59	0.69	0.56	0.46	0.45	8.88
5 - 10 kts	1.14	1.08	1.00	1.05	1.30	1.60	1.53	2.35	2.75	3.82	3.60	2.91	2.03	1.77	1.36	1.58	30.86
10 - 15 kts	1.24	0.96	1.02	1.19	1.15	1.01	0.82	1.19	3.19	6.41	6.25	4.60	2.66	1.60	1.44	1.31	36.03
15 - 20 kts	0.52	0.47	0.56	0.69	0.43	0.17	0.10	0.21	0.93	5.34	4.46	1.97	0.56	0.55	0.59	0.49	18.06
20 - 25 kts	0.12	0.10	0.21	0.16	0.15	0.07	0.05	0.12	0.21	1.90	1.37	0.18	0.07	0.09	0.21	0.16	5.16
25 - 30 kts	0.01	•	0.03	0.02	0.01	0.02	0.01	0.01	0.01	0.31	0.13	•	0.01	•	0.01	0.02	0.62
30 - 35 kts	•	0.02	•	•	•	•	•	•	•	•	0.01	•	•	•	•	•	0.03
35 - 40 kts	0.01	•	•	•	•	•	0.01	•	0.01	•	•	•	•	•	•	•	0.03
40 - 45 kts	•	•	•	•	•	•	•	•	•	•	•	•	•	•	•	•	•
45 - 50 kts	•	•	•	•	•	•	•	•	•	•	•	•	•	•	•	•	•
Total	3.43	3.11	3.26	3.77	3.54	3.43	3.23	4.43	7.84	18.50	16.46	10.26	6.05	4.58	4.07	4.03	100.00