

## OCS A-0544 - June

Latitude: 40.24 N Longitude: 73.08 W

### Weather Days

Wave Height > 4.0 ft Mean: 9.6 days Range: 6.1 - 13.2 days p50:10 days p75:8 days p90:5.5 days

Wave Height > 5.0 ft Mean: 4.2 days Range: 1.4 - 7.1 days p50:4 days p75:3 days p90:1.5 days

Wave Height > 6.0 ft Mean: 1.8 days Range: 0.1 - 3.5 days p50:2 days p75:1 days p90:0.5 days

Wind Speed > 20.0 knots Mean: 2.0 days Range: 0.7 - 3.4 days p50:2.5 days p75:1 days p90:1 days

Wind Speed > 25.0 knots Mean: 0.3 days Range: 0.0 - 0.7 days p50:0.5 days p75:0.5 days p90:0.5 days

Wind Speed > 30.0 knots Mean: 0.0 days Range: 0.0 - 0.1 days p50:0.5 days p75:0.5 days p90:0.5 days

### Working Window Probability

Wave Height < 4.0 ft                      3 days or longer: 43%  
    5 days or longer: 13%  
    7 days or longer: 6%

Wave Height < 5.0 ft                      3 days or longer: 59%  
    5 days or longer: 31%  
    7 days or longer: 22%

Wave Height < 6.0 ft                      3 days or longer: 75%  
    5 days or longer: 47%  
    7 days or longer: 41%

### Waves

Mean Height: 2 - 4 ft

The wave heights will occasionally reach 8 - 10 ft, but rarely higher.

Mean Period: 6 - 8 sec

The wave periods will occasionally reach 14 - 16 sec, but rarely longer.

Principle Direction, from: S

WindSea/Swell: 22% / 78%

### Winds

Mean Speed: 10 - 15 kts

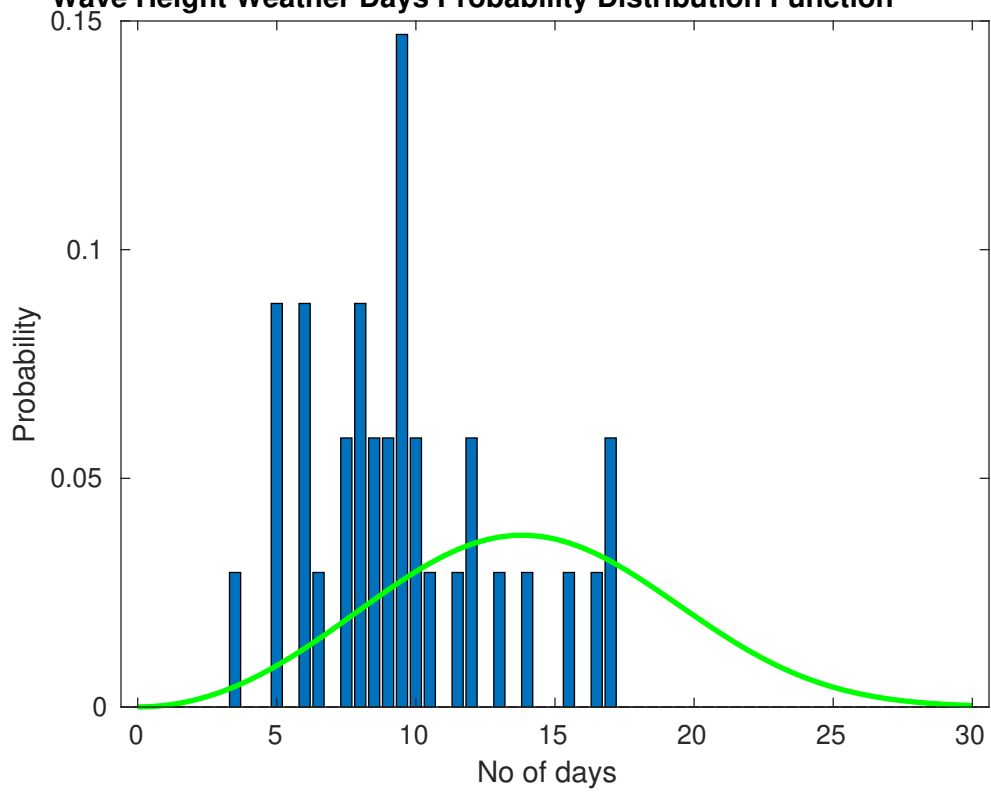
The winds will occasionally reach 25 - 30 kts, but rarely greater.

Principle Direction, from: SW

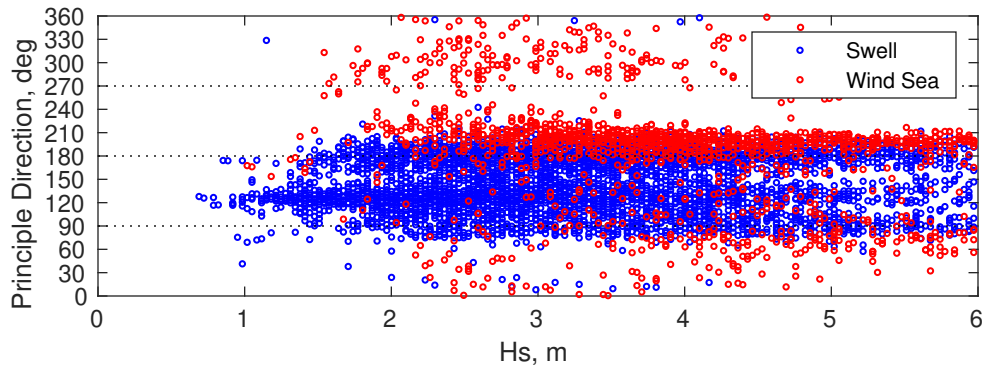
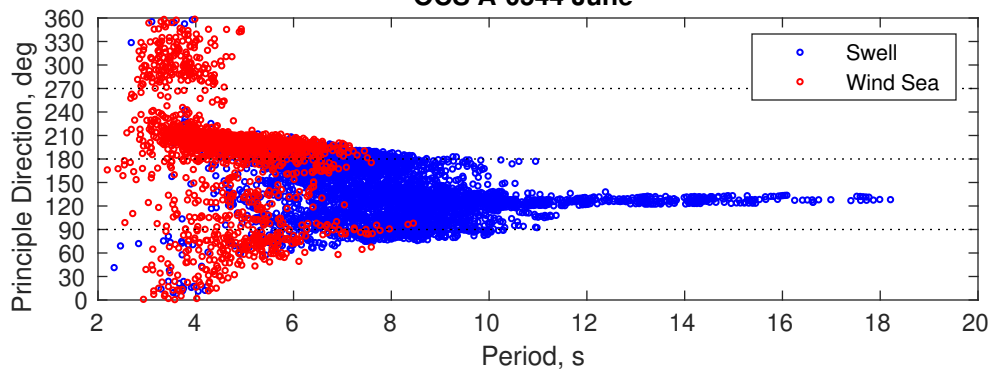
### Severe Storms

Severe storms with gale force winds and extreme waves are not expected during this month.

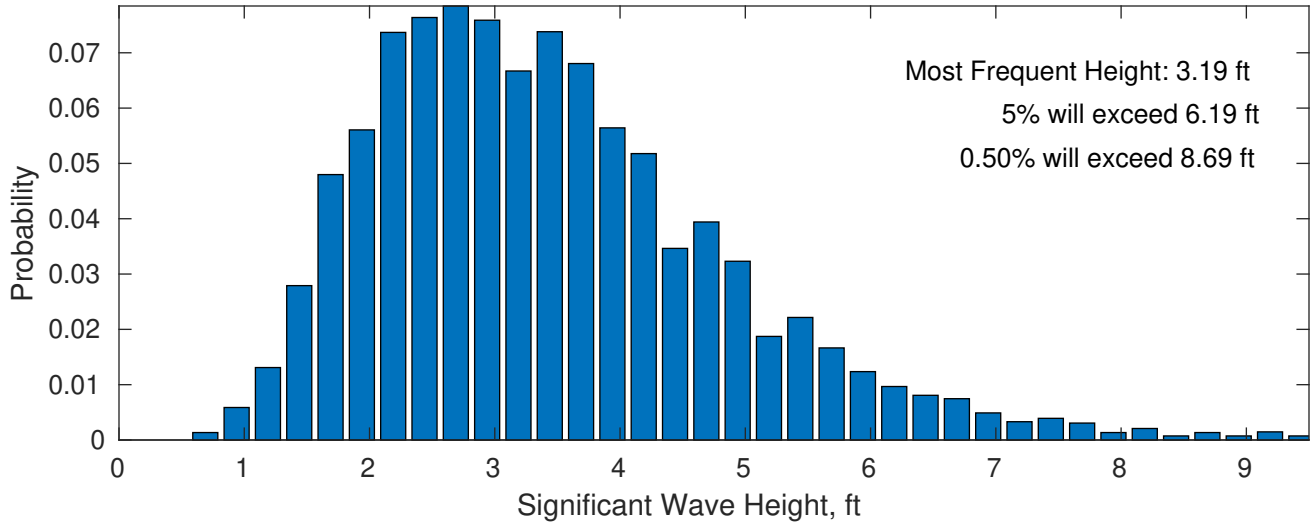
**Wave Height Weather Days Probability Distribution Function**



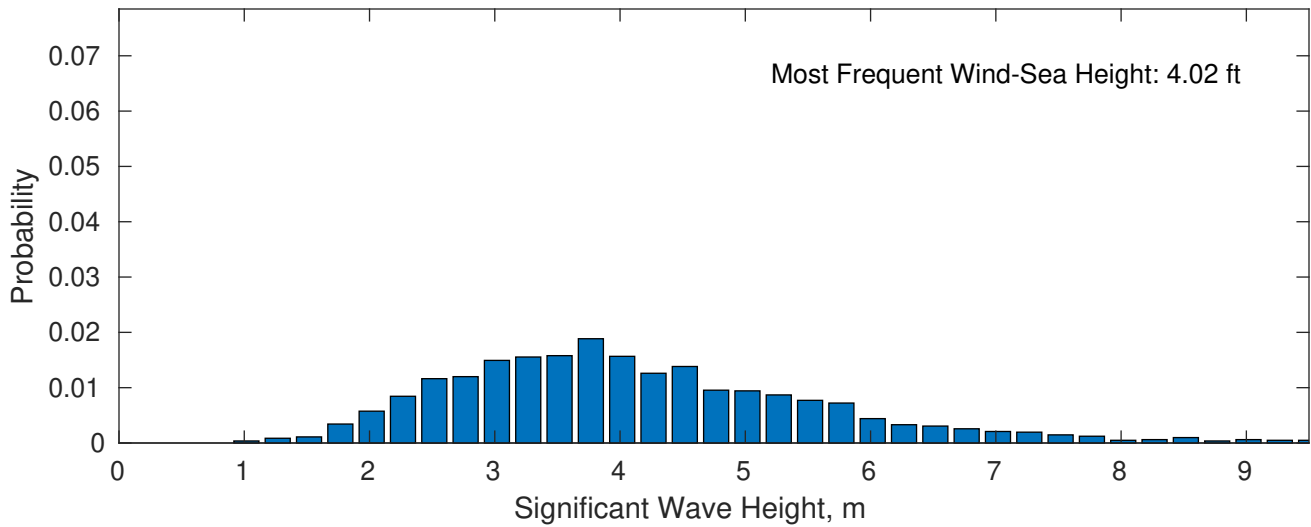
OCS A-0544 June



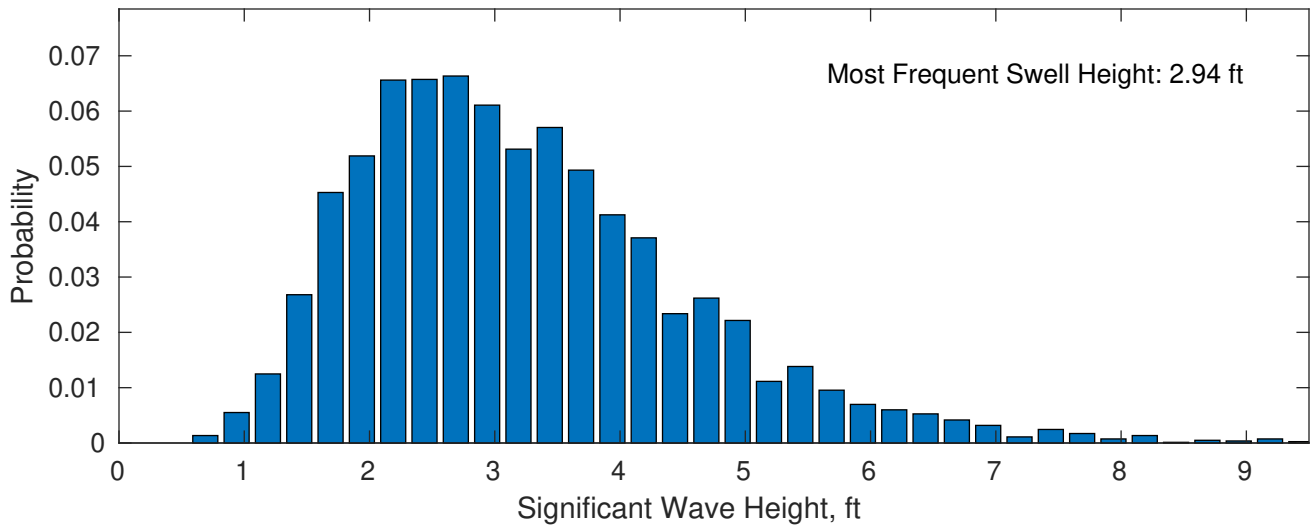
**June Wave Height PDF: 1979 - 2015**



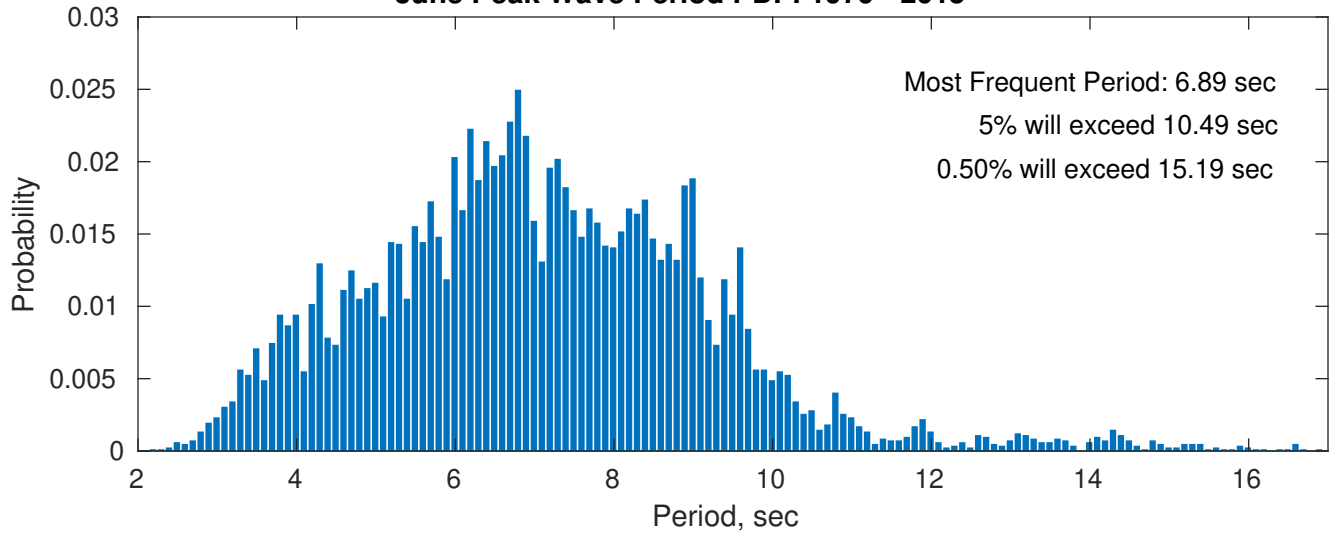
**Wind-Sea: 21.85%**



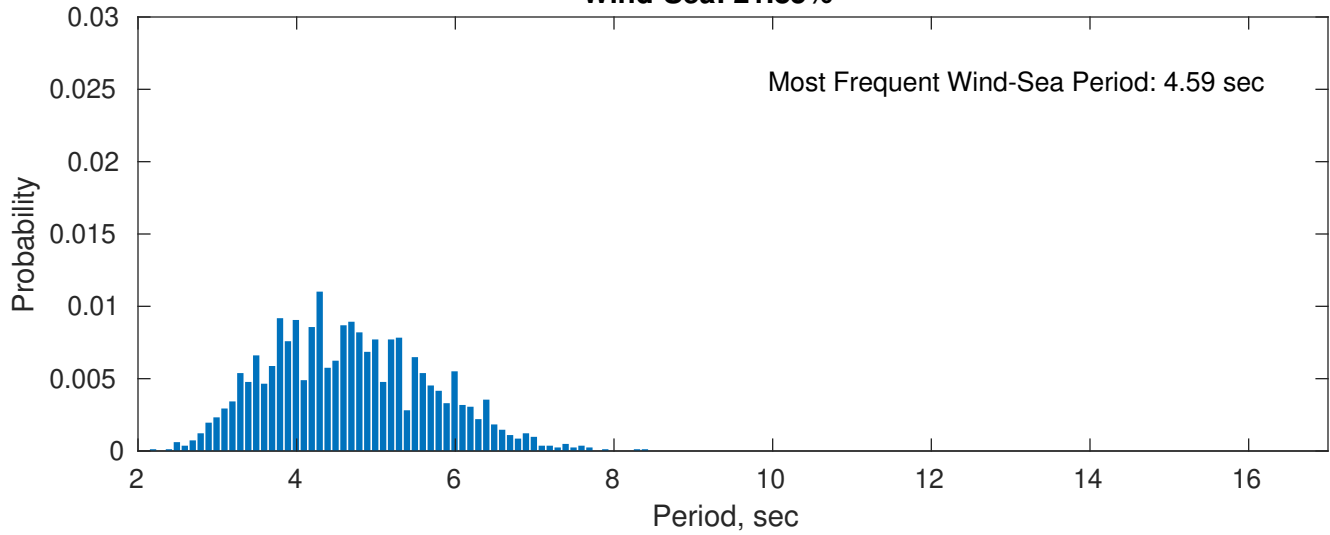
**Swell: 78.15%**



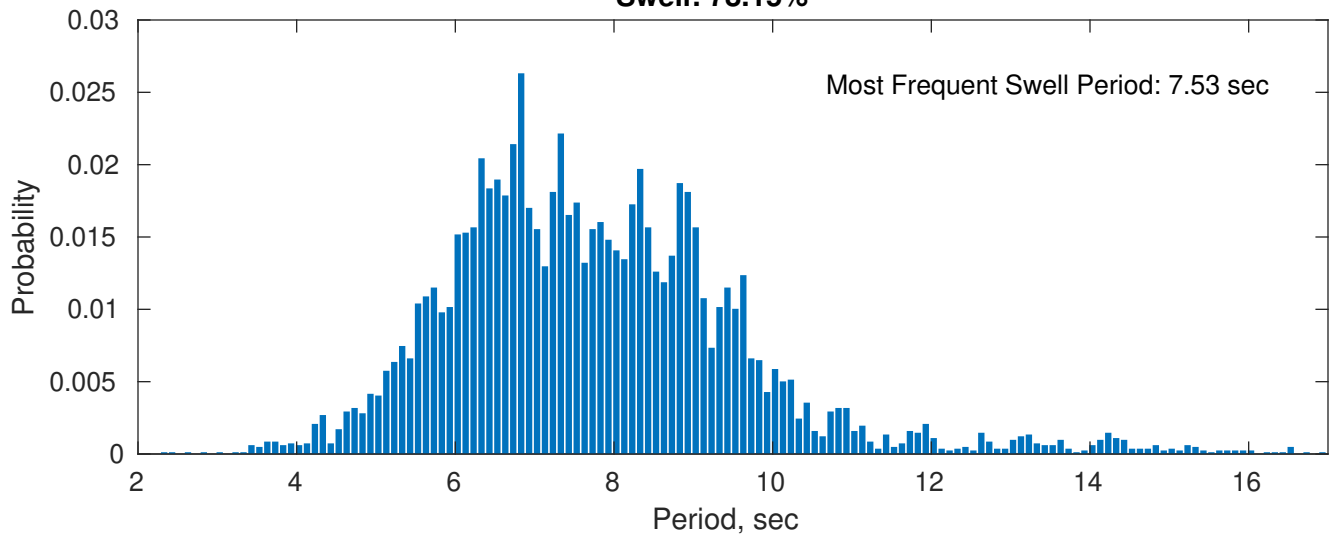
**June Peak Wave Period PDF: 1979 - 2015**



**Wind-Sea: 21.85%**

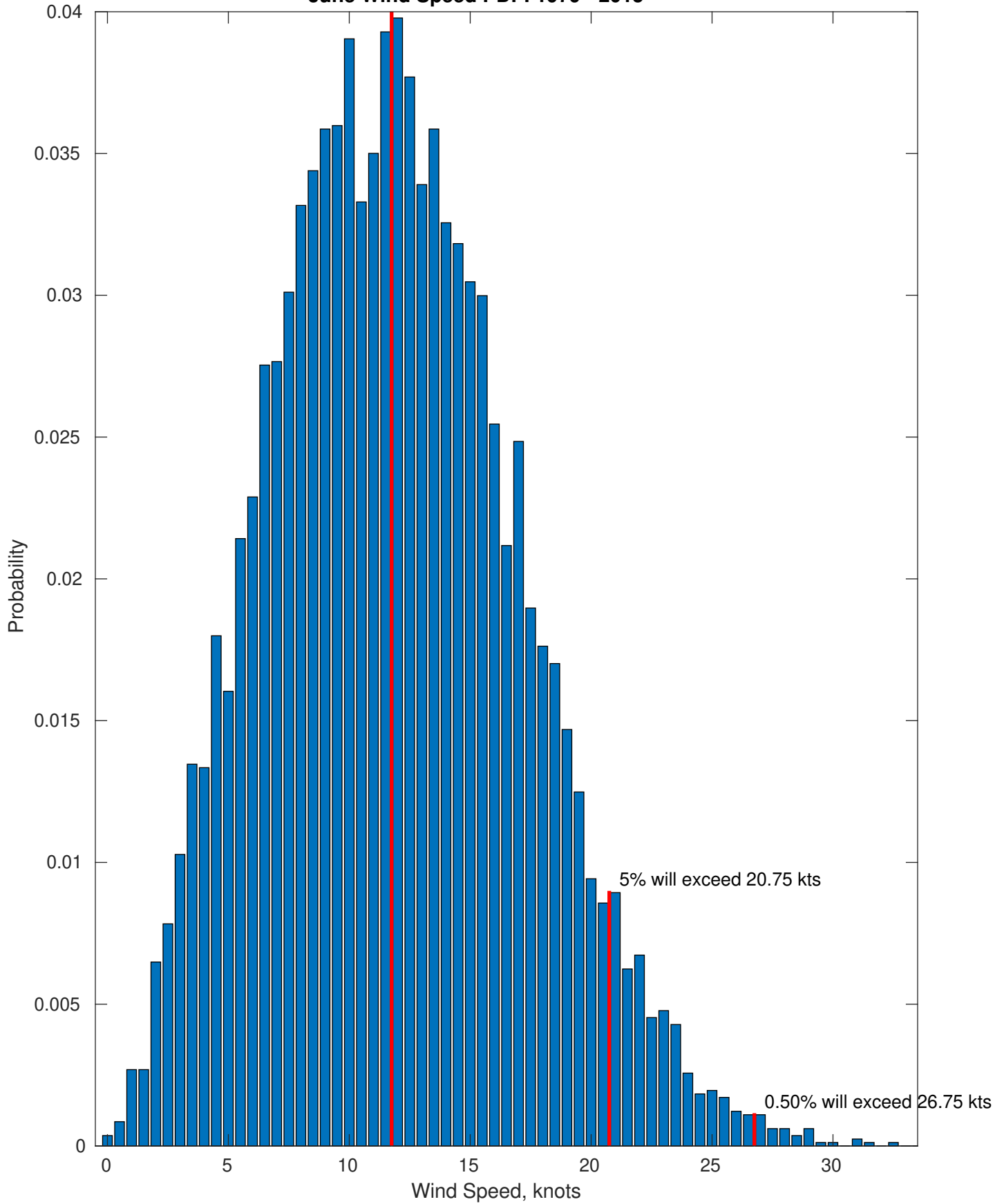


**Swell: 78.15%**

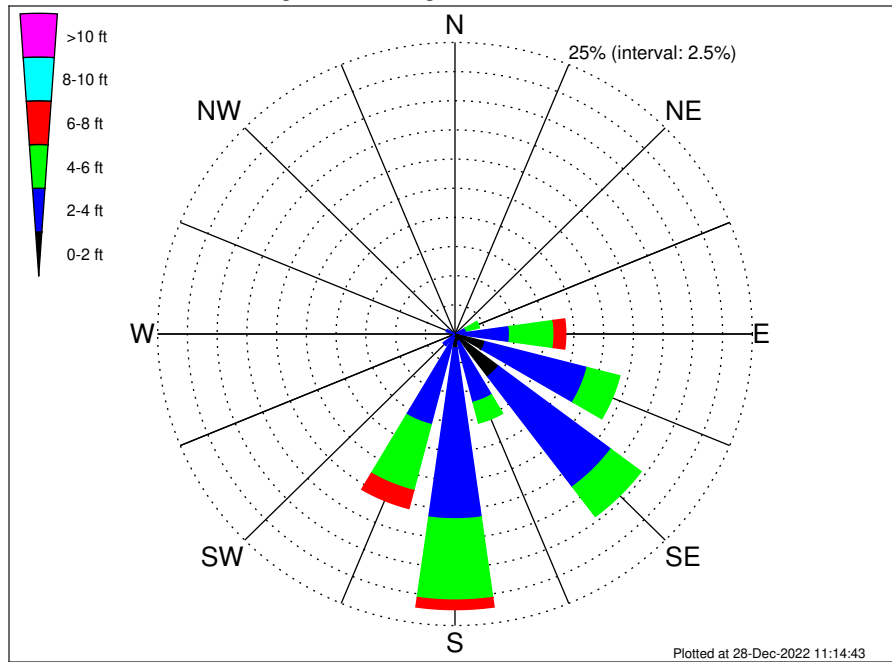


Most Frequent Wind Speed: 11.75 kts

### June Wind Speed PDF: 1979 - 2015



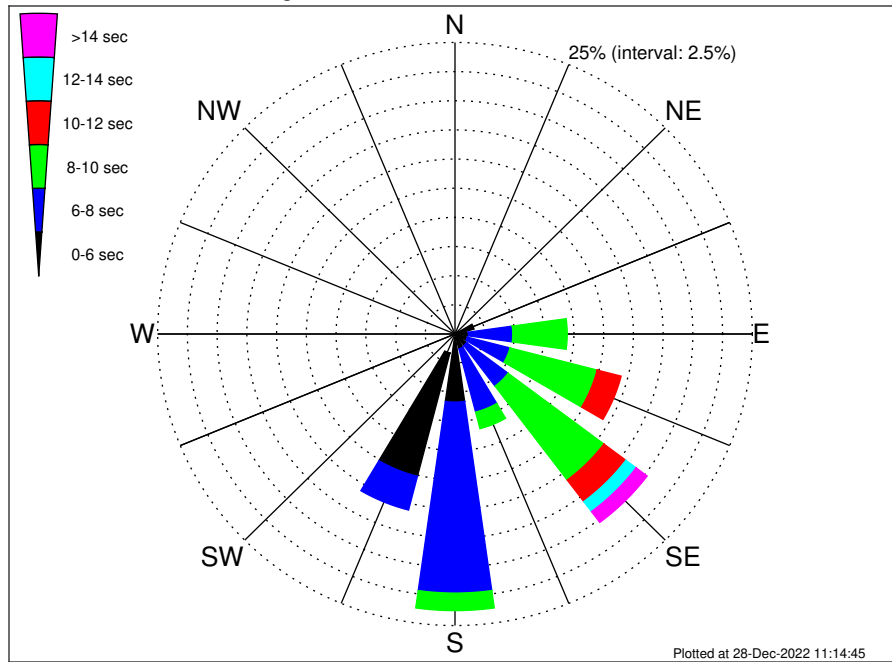
OCS A-0544 Climatological WaveHeight Rose for June: 1979 - 2015



Joint Frequency Distribution Table

	N	NNE	NE	ENE	E	ESE	SE	SSE	S	SSW	SW	WSW	W	WNW	NW	NNW	Total
calm	•	•	0.01	0.01	•	0.09	0.07	•	0.04	•	•	•	•	•	•	•	0.22
1 - 2 ft	•	•	0.01	0.07	0.44	2.53	4.50	0.70	1.15	0.32	0.10	0.02	0.06	0.12	0.02	0.01	10.07
2 - 4 ft	0.26	0.32	0.20	0.91	4.15	8.86	11.84	5.35	14.66	7.70	1.15	0.16	0.20	0.64	0.45	0.29	57.12
4 - 6 ft	0.02	0.16	0.28	1.14	3.75	2.84	3.18	1.85	6.96	5.84	0.07	0.06	0.09	0.11	0.09	0.10	26.54
6 - 8 ft	•	•	0.02	0.22	0.98	0.34	0.58	0.48	0.82	1.60	•	•	•	0.01	0.01	0.04	5.10
8 - 10 ft	•	•	0.01	0.04	0.32	0.13	0.06	0.02	0.12	0.13	•	•	•	•	•	•	0.84
10 - 12 ft	•	•	•	•	0.06	•	•	0.02	0.01	•	•	•	•	•	•	•	0.10
12 - 14 ft	•	•	•	•	•	•	•	•	•	•	•	•	•	•	•	•	•
14 - 16 ft	•	•	•	•	•	•	•	•	•	•	•	•	•	•	•	•	•
16 - 18 ft	•	•	•	•	•	•	•	•	•	•	•	•	•	•	•	•	•
> 18 ft	•	•	•	•	•	•	•	•	•	•	•	•	•	•	•	•	•
Total	0.28	0.48	0.54	2.39	9.69	14.80	20.23	8.42	23.77	15.59	1.32	0.24	0.34	0.88	0.58	0.44	100.00

OCS A-0544 Climatological WavePeriod Rose for June: 1979 - 2015

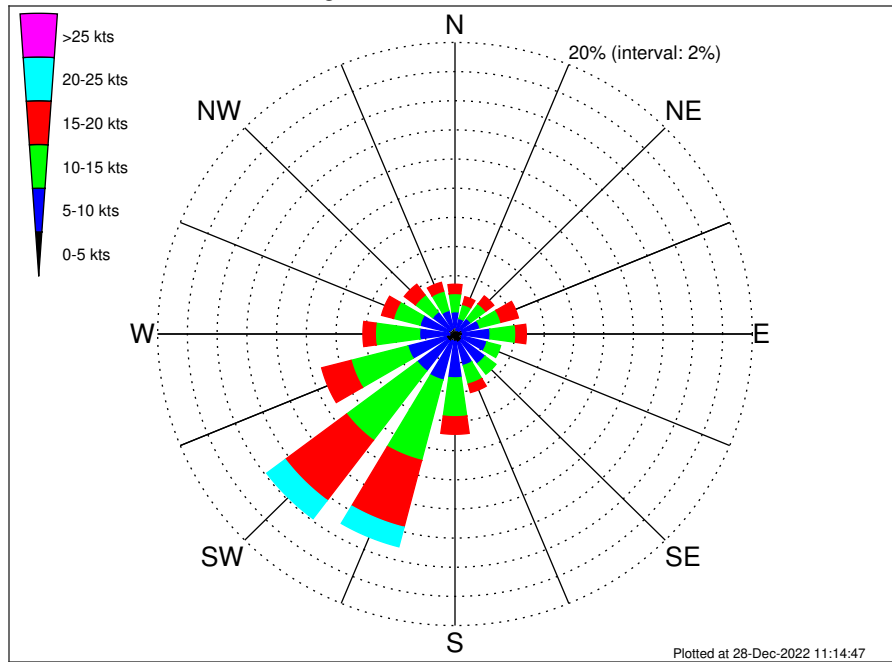


Joint Frequency Distribution Table

	N	NNE	NE	ENE	E	ESE	SE	SSE	S	SSW	SW	WSW	W	WNW	NW	NNW	Total
calm	.	.	.	.	.	.	.	.	.	.	.	.	.	.	.	.	.
1 - 2 sec	.	.	.	.	.	.	.	.	.	.	.	.	.	.	.	.	.
2 - 4 sec	0.26	0.26	0.17	0.22	0.13	0.12	0.09	0.18	0.33	1.69	1.00	0.17	0.24	0.71	0.49	0.32	6.39
4 - 6 sec	0.02	0.22	0.35	1.43	0.99	0.95	1.14	1.13	5.51	10.92	0.32	0.07	0.10	0.17	0.09	0.12	23.54
6 - 8 sec	.	.	0.01	0.58	3.73	3.70	4.37	5.61	16.38	2.99	.	.	.	.	.	.	37.36
8 - 10 sec	.	.	.	0.16	4.58	7.58	10.09	1.47	1.51	.	.	.	.	.	.	.	25.37
10 - 12 sec	.	.	.	.	0.26	2.08	2.31	0.04	0.05	.	.	.	.	.	.	.	4.74
12 - 14 sec	.	.	.	.	.	0.23	1.08	.	.	.	.	.	.	.	.	.	1.31
14 - 16 sec	.	.	.	.	.	0.13	0.88	.	.	.	.	.	.	.	.	.	1.02
18 - 20 sec	.	.	.	.	.	.	0.27	.	.	.	.	.	.	.	.	.	0.27
22 - 24 sec	.	.	.	.	.	.	0.01	.	.	.	.	.	.	.	.	.	0.01
Total	0.28	0.48	0.54	2.39	9.69	14.80	20.23	8.42	23.77	15.59	1.32	0.24	0.34	0.88	0.58	0.44	100.00



OCS A-0544 Climatological Wind Rose for June: 1979 - 2015



Joint Frequency Distribution Table

	N	NNE	NE	ENE	E	ESE	SE	SSE	S	SSW	SW	WSW	W	WNW	NW	NNW	Total
calm	•	0.02	•	0.01	•	0.01	•	0.01	0.01	0.01	•	•	•	•	0.01	0.01	0.12
0 - 5 kts	0.47	0.27	0.31	0.49	0.51	0.48	0.56	0.59	0.50	0.48	0.60	0.62	0.37	0.48	0.37	0.39	7.48
5 - 10 kts	1.06	0.81	1.02	1.22	1.85	1.73	1.97	1.63	2.50	2.77	2.56	2.66	2.02	1.96	1.51	1.26	28.51
10 - 15 kts	1.25	0.99	1.27	1.47	1.74	0.95	0.92	1.32	2.67	5.70	5.96	3.94	2.97	1.84	1.46	1.37	35.83
15 - 20 kts	0.64	0.55	0.67	1.21	0.70	0.24	0.29	0.60	1.20	4.74	5.17	2.04	0.83	0.83	0.93	0.62	21.27
20 - 25 kts	0.23	0.44	0.24	0.35	0.20	0.13	0.12	0.09	0.15	1.38	1.57	0.13	0.12	0.21	0.27	0.15	5.79
25 - 30 kts	0.02	0.09	0.04	0.13	0.05	0.02	0.01	0.02	0.04	0.26	0.07	0.02	0.04	0.01	0.02	0.09	0.94
30 - 35 kts	•	•	0.02	•	•	•	0.01	•	•	•	•	•	•	•	0.01	0.01	0.06
35 - 40 kts	•	•	•	•	•	•	•	•	•	•	•	•	•	•	•	•	•
40 - 45 kts	•	•	•	•	•	•	•	•	•	•	•	•	•	•	•	•	•
45 - 50 kts	•	•	•	•	•	•	•	•	•	•	•	•	•	•	•	•	•
Total	3.67	3.17	3.57	4.90	5.04	3.57	3.89	4.26	7.06	15.34	15.94	9.42	6.35	5.32	4.58	3.90	100.00