

OCS A-0544 - March

Latitude: 40.24 N Longitude: 73.08 W

Weather Days

Wave Height > 4.0 ft Mean: 15.5 days Range: 12.5 - 18.4 days p50:16.5 days p75:15 days p90:12 days

Wave Height > 5.0 ft Mean: 10.9 days Range: 7.7 - 14.0 days p50:11.5 days p75:9.5 days p90:7 days

Wave Height > 6.0 ft Mean: 7.2 days Range: 4.2 - 10.1 days p50:7.5 days p75:6 days p90:3.5 days

Wind Speed > 20.0 knots Mean: 8.7 days Range: 6.0 - 11.3 days p50:9 days p75:7.5 days p90:5.5 days

Wind Speed > 25.0 knots Mean: 3.5 days Range: 1.7 - 5.3 days p50:4 days p75:2 days p90:1.5 days

Wind Speed > 30.0 knots Mean: 1.1 days Range: 0.2 - 2.1 days p50:1.5 days p75:0.5 days p90:0.5 days

Working Window Probability

Wave Height < 4.0 ft 3 days or longer: 26%
 5 days or longer: 1%
 7 days or longer: 1%

Wave Height < 5.0 ft 3 days or longer: 41%
 5 days or longer: 7%
 7 days or longer: 4%

Wave Height < 6.0 ft 3 days or longer: 56%
 5 days or longer: 17%
 7 days or longer: 9%

Waves

Mean Height: 4 - 6 ft

The wave heights will occasionally reach 12 - 14 ft, but rarely higher.

Mean Period: 6 - 8 sec

The wave periods will occasionally reach 12 - 14 sec, but rarely longer.

Principle Direction, from: E

WindSea/Swell: 40% / 60%

Winds

Mean Speed: 15 - 20 kts

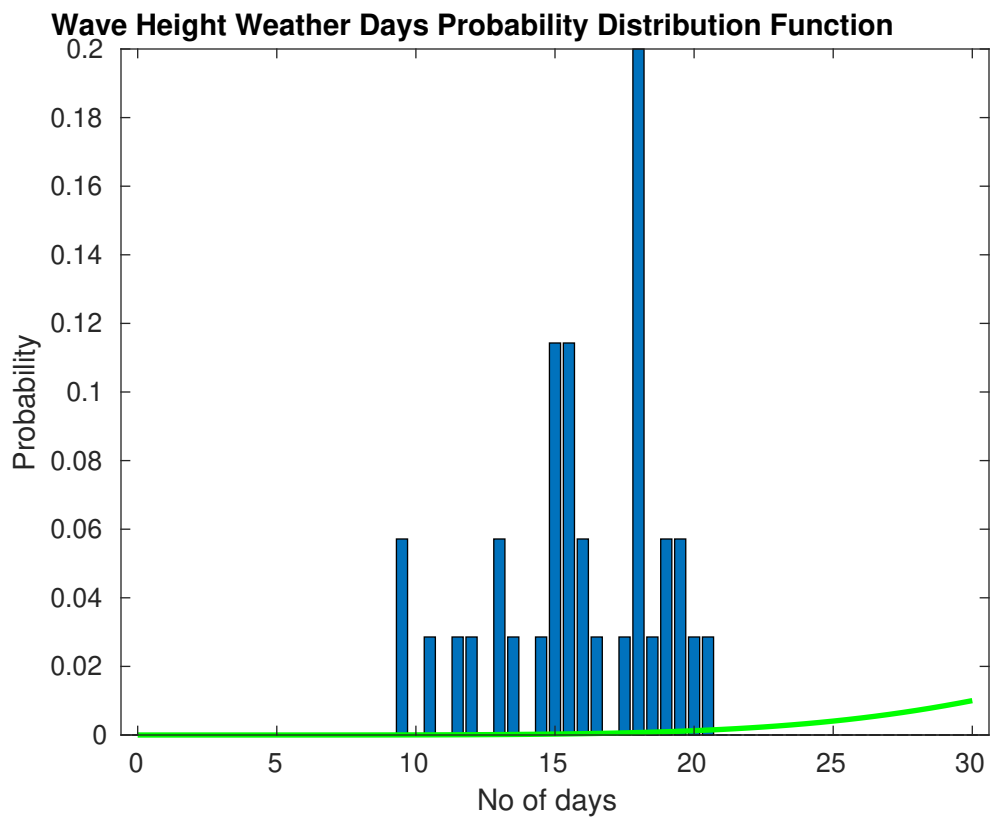
The winds will occasionally reach 35 - 40 kts, but rarely greater.

Principle Direction, from: NW

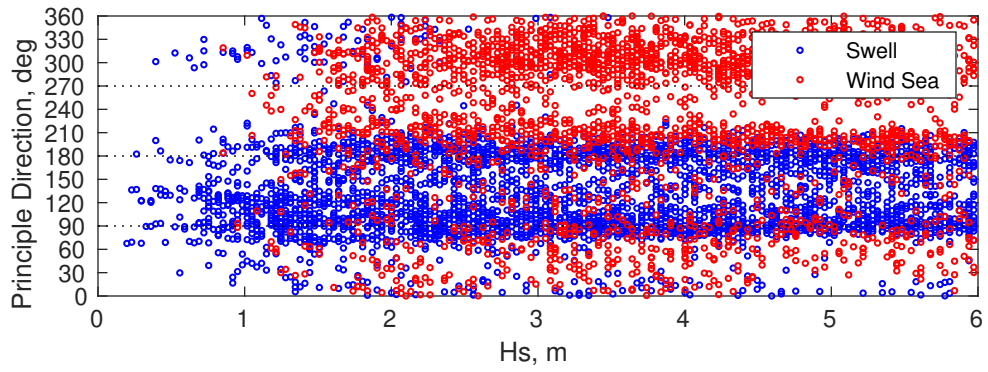
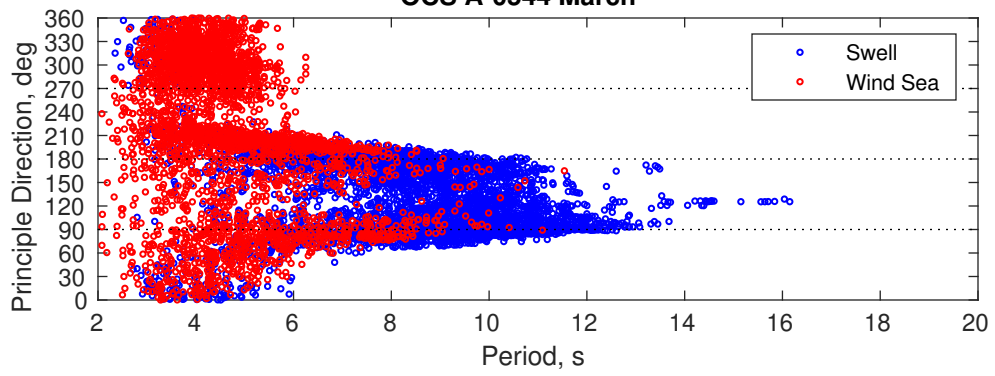
Severe Storms

There is a 49 % chance of a storm occurring in the month with winds peaking above 34 kts.

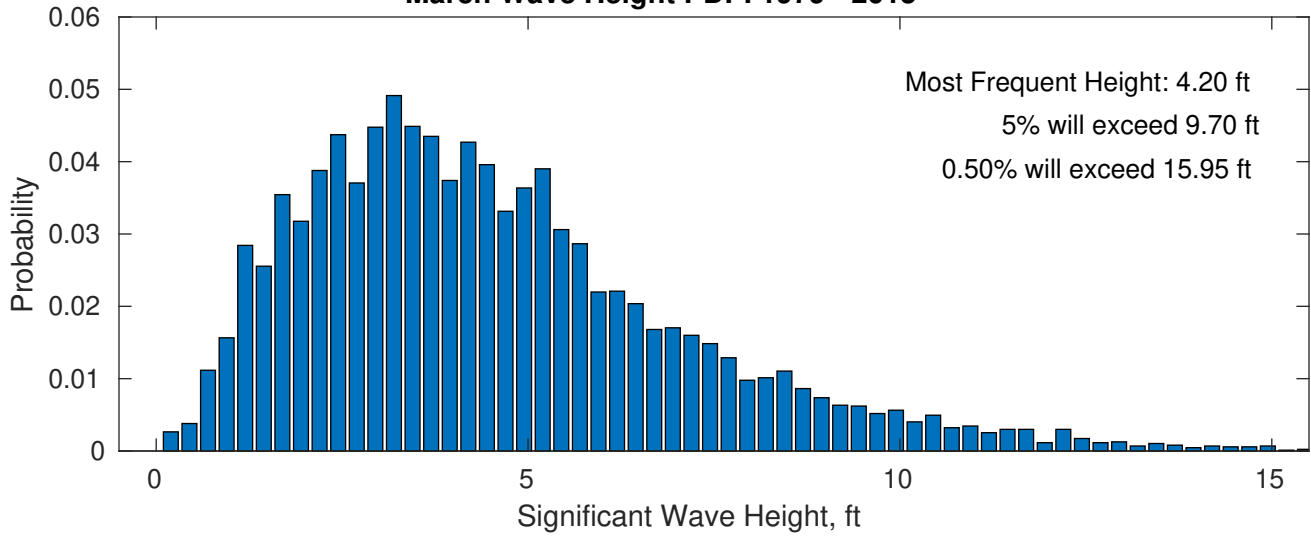
There is a 54 % chance of a storm occurring in the month with waves peaking at 4m (13 ft) or greater.



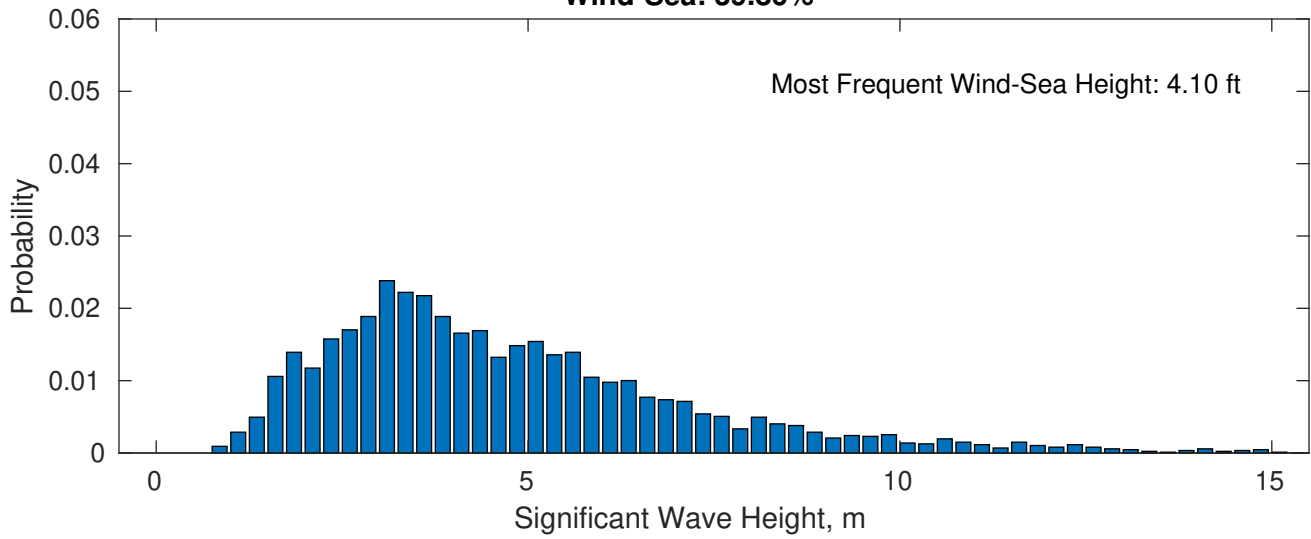
OCS A-0544 March



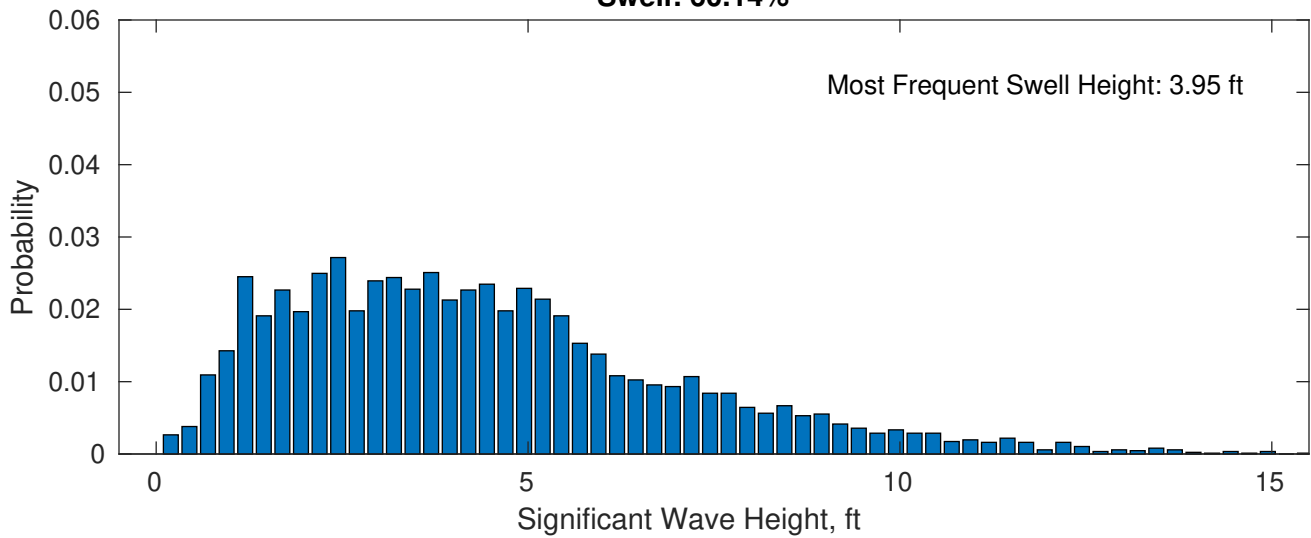
March Wave Height PDF: 1979 - 2015



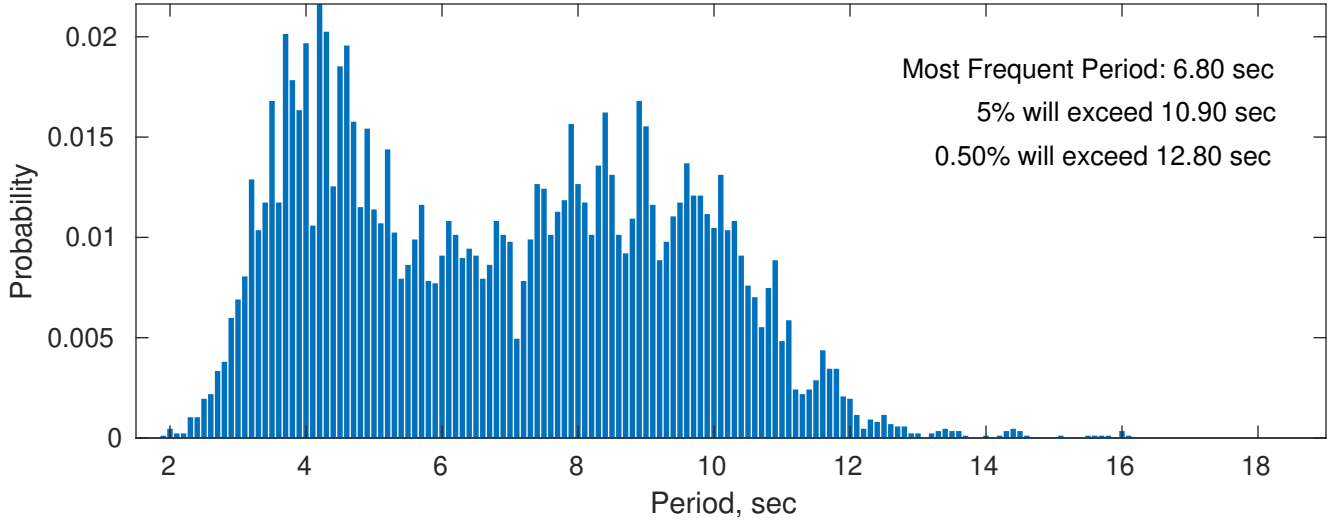
Wind-Sea: 39.86%



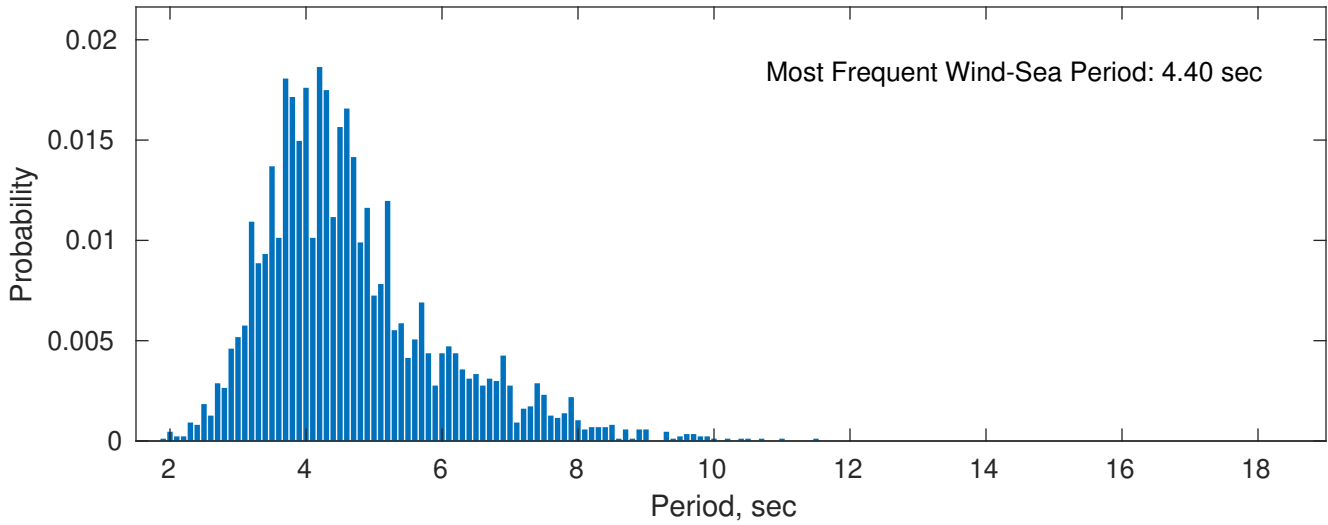
Swell: 60.14%



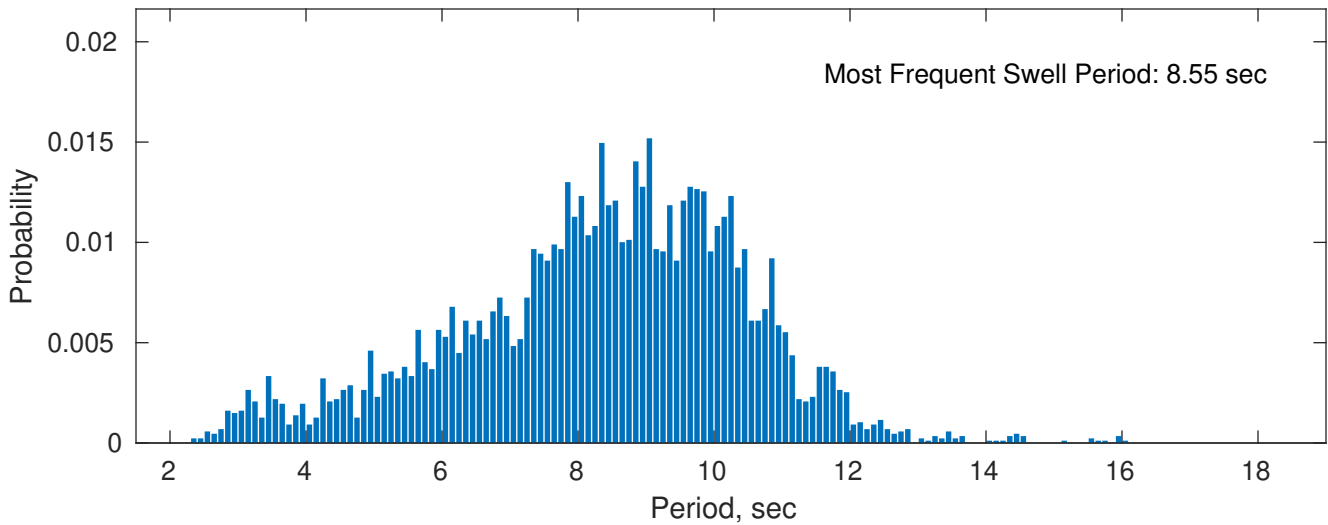
March Peak Wave Period PDF: 1979 - 2015



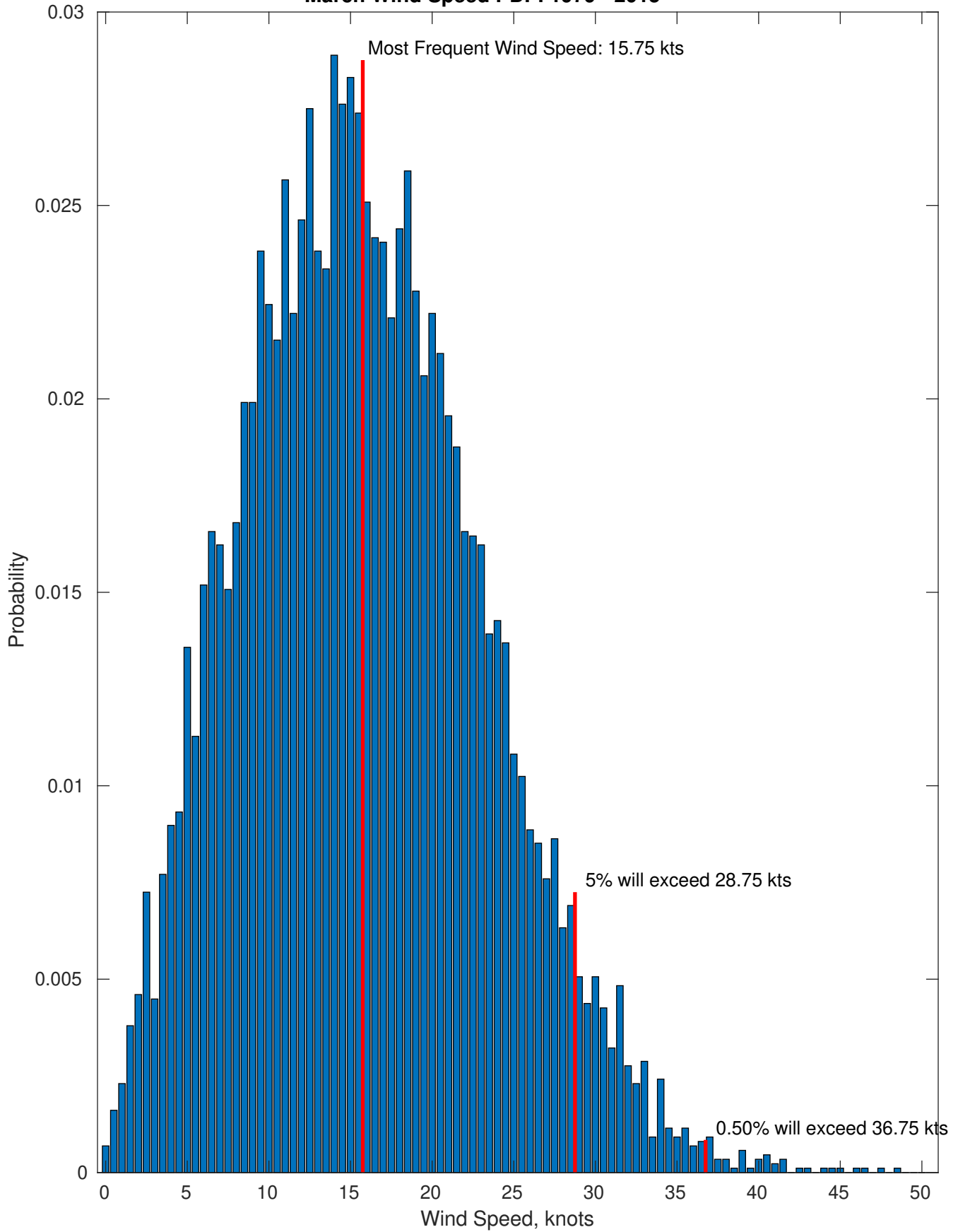
Wind-Sea: 39.86%



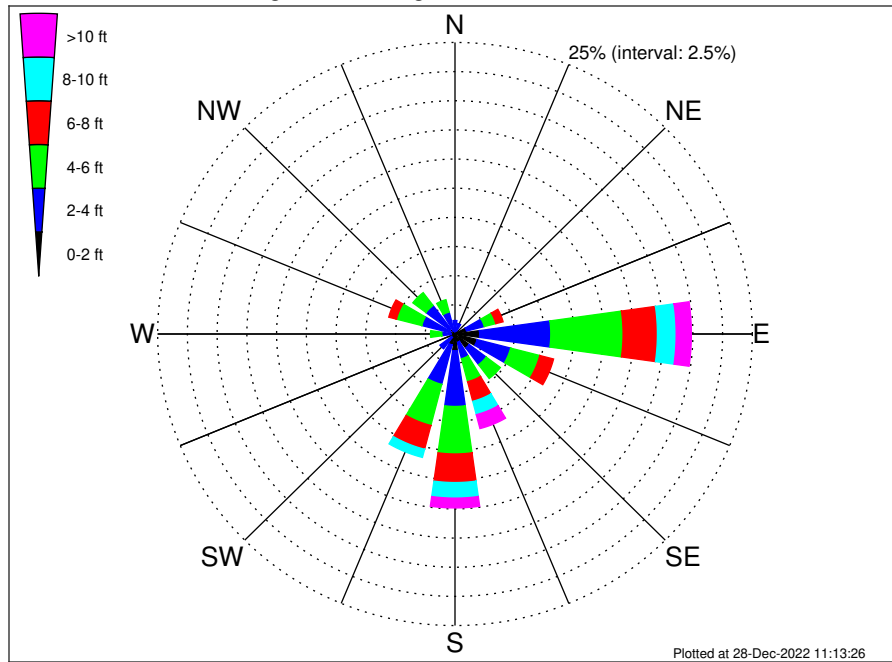
Swell: 60.14%



March Wind Speed PDF: 1979 - 2015



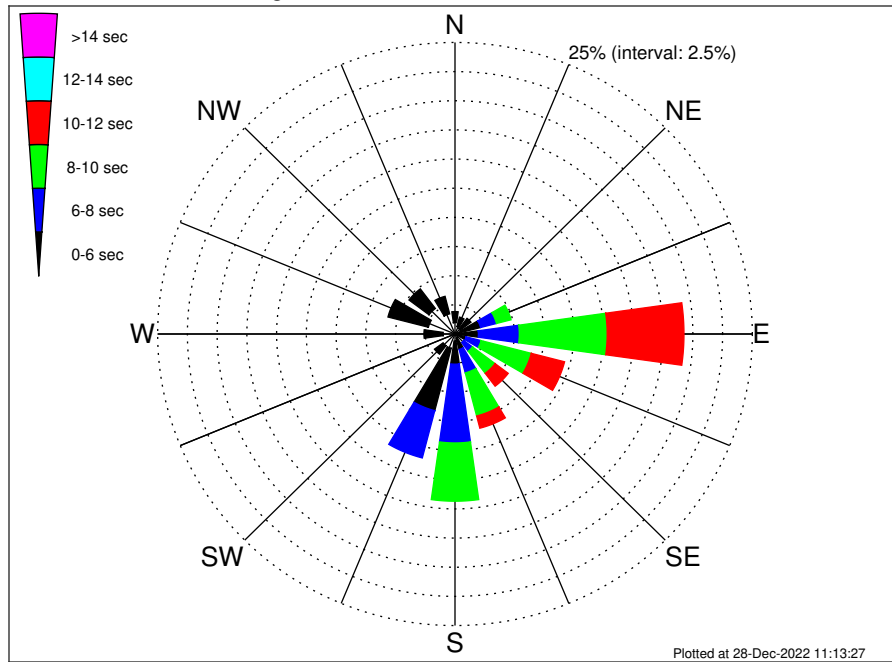
OCS A-0544 Climatological WaveHeight Rose for March: 1979 - 2015



Joint Frequency Distribution Table

	N	NNE	NE	ENE	E	ESE	SE	SSE	S	SSW	SW	WSW	W	WNW	NW	NNW	Total
calm	•	0.05	0.06	0.17	0.44	0.35	0.51	0.08	0.16	0.07	0.01	•	•	0.03	0.10	0.01	2.04
1 - 2 ft	0.21	0.25	0.28	0.83	1.63	1.58	0.99	0.66	1.28	0.90	0.36	0.24	0.32	0.37	0.45	0.30	10.63
2 - 4 ft	0.96	0.63	0.61	1.54	5.98	2.91	1.80	1.45	4.78	3.50	1.22	0.56	0.79	2.49	2.51	1.63	33.36
4 - 6 ft	0.61	0.40	0.52	1.00	6.08	2.53	1.48	2.04	4.07	3.64	0.45	0.30	0.94	2.20	1.38	1.09	28.73
6 - 8 ft	0.13	0.12	0.21	0.63	2.89	1.20	0.47	1.74	2.45	2.11	0.13	0.08	0.46	0.67	0.39	0.28	13.94
8 - 10 ft	0.02	0.05	0.02	0.46	1.58	0.60	0.23	1.19	1.33	0.72	•	0.02	0.12	0.07	•	0.02	6.43
10 - 12 ft	•	•	0.01	0.23	0.79	0.31	0.12	0.69	0.60	0.10	•	•	•	0.02	0.02	•	2.90
12 - 14 ft	•	•	•	0.05	0.25	0.15	0.12	0.30	0.17	0.05	•	•	•	•	•	•	1.08
14 - 16 ft	•	•	•	•	0.12	0.05	0.06	0.07	0.07	0.01	•	•	•	•	•	•	0.37
16 - 18 ft	•	•	•	•	0.03	0.06	0.09	0.12	•	•	•	•	•	•	•	•	0.30
> 18 ft	•	•	•	•	0.08	0.01	0.07	0.06	•	•	•	•	•	•	•	•	0.22
Total	1.92	1.50	1.70	4.91	19.87	9.74	5.93	8.38	14.91	11.09	2.16	1.21	2.64	5.85	4.86	3.34	100.00

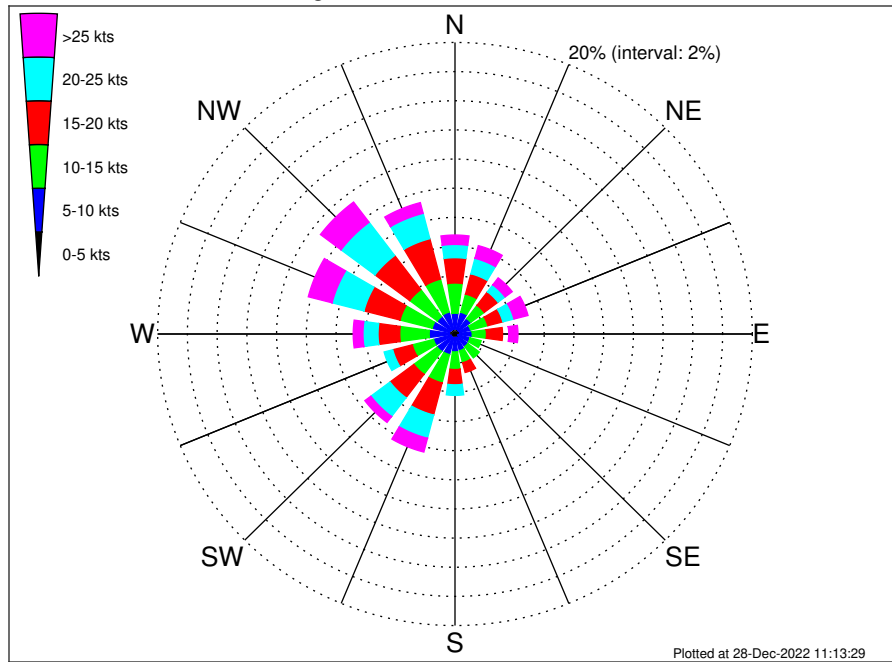
OCS A-0544 Climatological WavePeriod Rose for March: 1979 - 2015



Joint Frequency Distribution Table

	N	NNE	NE	ENE	E	ESE	SE	SSE	S	SSW	SW	WSW	W	WNW	NW	NNW	Total
calm	•	•	•	•	•	•	•	•	•	•	•	•	•	•	•	•	•
1 - 2 sec	•	•	•	•	0.01	•	•	•	•	•	•	•	•	•	•	•	0.01
2 - 4 sec	0.98	0.66	0.56	0.51	0.30	0.25	0.31	0.38	0.60	1.27	1.25	0.63	1.00	2.31	2.74	1.78	15.54
4 - 6 sec	0.94	0.84	1.12	1.71	1.66	0.71	0.61	0.99	1.99	5.52	0.91	0.56	1.61	3.51	2.11	1.55	26.35
6 - 8 sec	•	•	0.02	1.38	3.44	1.30	0.92	2.07	6.75	4.19	•	0.01	0.02	0.02	0.01	•	20.15
8 - 10 sec	•	•	•	1.27	7.39	4.36	2.38	3.82	4.99	0.12	•	•	•	•	•	•	24.33
10 - 12 sec	•	•	•	0.05	6.46	2.89	1.38	1.08	0.54	•	•	•	•	•	•	•	12.39
12 - 14 sec	•	•	•	•	0.62	0.18	0.10	0.03	0.03	•	•	•	•	•	•	•	0.98
14 - 16 sec	•	•	•	•	•	0.03	0.17	•	•	•	•	•	•	•	•	•	0.21
18 - 20 sec	•	•	•	•	•	•	0.05	•	•	•	•	•	•	•	•	•	0.05
22 - 24 sec	•	•	•	•	•	•	•	•	•	•	•	•	•	•	•	•	•
Total	1.92	1.50	1.70	4.91	19.87	9.74	5.93	8.38	14.91	11.09	2.16	1.21	2.64	5.85	4.86	3.34	100.00

OCS A-0544 Climatological Wind Rose for March: 1979 - 2015



Joint Frequency Distribution Table

	N	NNE	NE	ENE	E	ESE	SE	SSE	S	SSW	SW	WSW	W	WNW	NW	NNW	Total
calm	0.03	0.01	0.02	0.01	•	0.02	•	0.01	0.01	0.02	•	0.02	0.01	•	0.02	0.02	0.23
0 - 5 kts	0.32	0.35	0.29	0.33	0.32	0.20	0.31	0.25	0.23	0.28	0.28	0.25	0.37	0.41	0.33	0.32	4.84
5 - 10 kts	1.07	1.19	1.01	0.74	0.84	0.83	0.77	0.92	0.99	1.16	1.22	1.22	1.36	1.17	1.14	1.21	16.84
10 - 15 kts	2.07	1.29	1.14	1.20	0.96	0.77	0.97	0.85	1.21	2.00	1.97	1.47	1.98	2.23	2.32	2.34	24.76
15 - 20 kts	1.74	1.44	1.16	1.05	1.08	0.39	0.47	0.69	1.05	2.28	2.01	1.36	1.46	2.51	2.92	2.87	24.48
20 - 25 kts	0.91	1.09	0.60	0.77	0.41	0.32	0.35	0.38	0.72	1.65	1.61	0.60	1.01	2.21	2.85	1.80	17.28
25 - 30 kts	0.43	0.55	0.26	0.56	0.24	0.20	0.21	0.16	0.29	0.75	0.37	0.18	0.35	1.15	1.42	0.62	7.73
30 - 35 kts	0.15	0.28	0.29	0.26	0.22	0.05	0.07	0.13	0.10	0.16	0.12	0.03	0.24	0.45	0.32	0.12	2.98
35 - 40 kts	0.07	0.06	0.03	0.07	0.10	0.01	0.03	0.02	0.02	0.05	0.01	0.02	0.05	0.03	•	0.01	0.60
40 - 45 kts	•	•	0.01	0.05	0.03	•	•	•	•	0.02	0.01	•	0.02	0.02	•	0.01	0.18
45 - 50 kts	•	0.01	•	0.03	0.02	•	•	•	•	•	•	•	•	•	•	•	0.07
Total	6.79	6.26	4.82	5.07	4.23	2.78	3.18	3.42	4.63	8.37	7.59	5.17	6.85	10.20	11.33	9.31	100.00