

OCS A-0544 - May

Latitude: 40.24 N Longitude: 73.08 W

Weather Days

Wave Height > 4.0 ft Mean: 12.5 days Range: 9.4 - 15.7 days p50:13 days p75:11.5 days p90:9.5 days

Wave Height > 5.0 ft Mean: 7.0 days Range: 4.3 - 9.8 days p50:7.5 days p75:5.5 days p90:3.5 days

Wave Height > 6.0 ft Mean: 4.0 days Range: 1.9 - 6.0 days p50:4 days p75:3 days p90:1.5 days

Wind Speed > 20.0 knots Mean: 3.5 days Range: 1.7 - 5.2 days p50:3.5 days p75:2.5 days p90:1.5 days

Wind Speed > 25.0 knots Mean: 0.9 days Range: 0.0 - 1.7 days p50:1 days p75:0.5 days p90:0.5 days

Wind Speed > 30.0 knots Mean: 0.2 days Range: 0.0 - 0.4 days p50:0.5 days p75:0.5 days p90:0.5 days

Working Window Probability

Wave Height < 4.0 ft 3 days or longer: 39%
 5 days or longer: 8%
 7 days or longer: 2%

Wave Height < 5.0 ft 3 days or longer: 61%
 5 days or longer: 25%
 7 days or longer: 11%

Wave Height < 6.0 ft 3 days or longer: 69%
 5 days or longer: 43%
 7 days or longer: 26%

Waves

Mean Height: 2 - 4 ft

The wave heights will occasionally reach 10 - 12 ft, but rarely higher.

Mean Period: 6 - 8 sec

The wave periods will occasionally reach 14 - 16 sec, but rarely longer.

Principle Direction, from: E

WindSea/Swell: 24% / 76%

Winds

Mean Speed: 10 - 15 kts

The winds will occasionally reach 25 - 30 kts, but rarely greater.

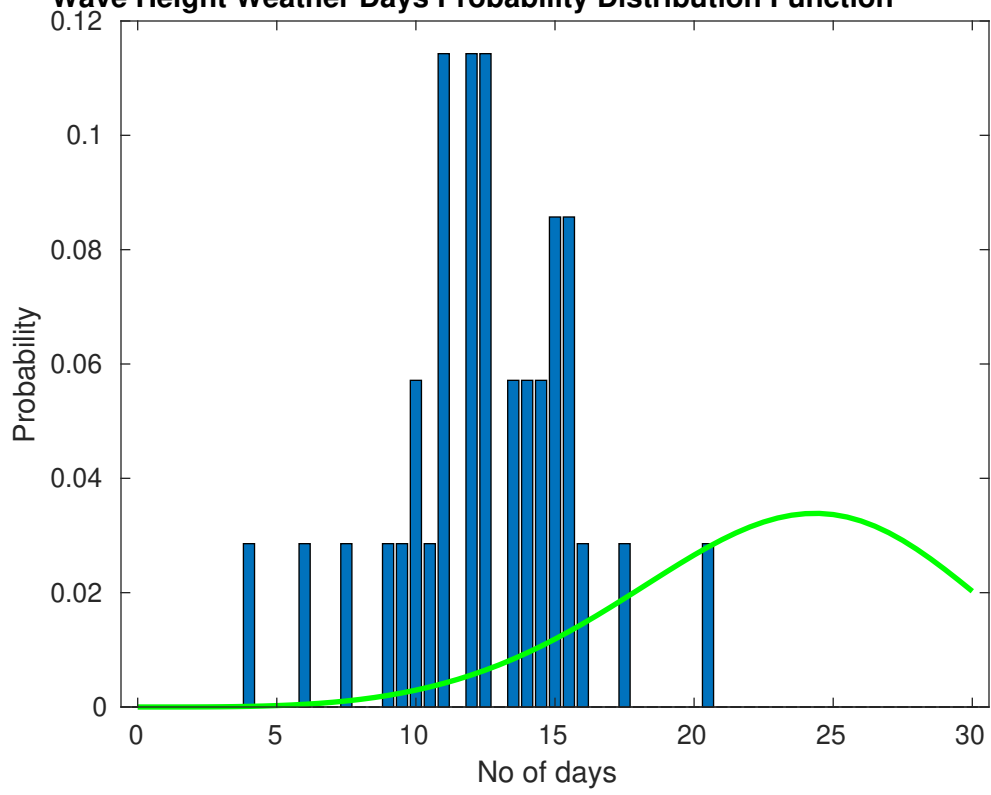
Principle Direction, from: SSW

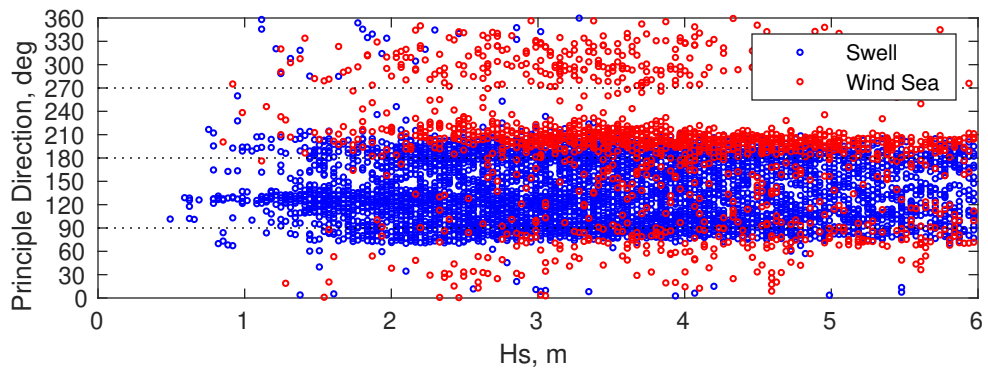
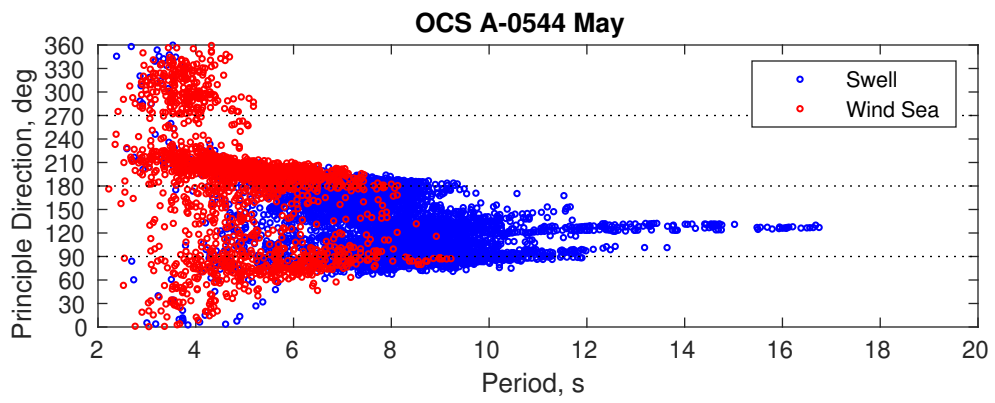
Severe Storms

There is a 6 % chance of a storm occurring in the month with winds peaking above 34 kts.

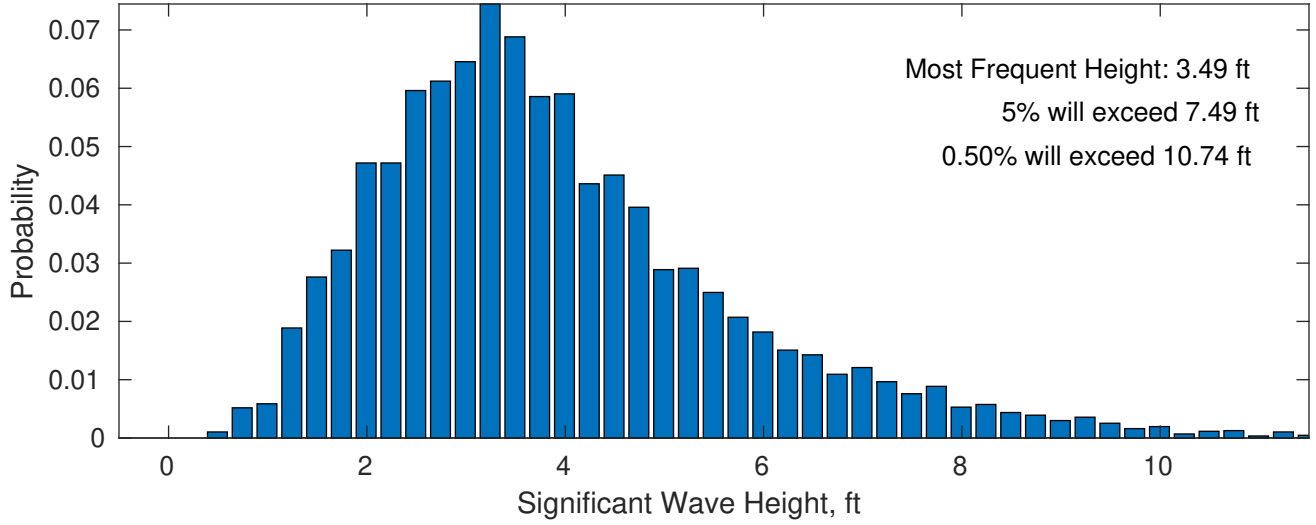
There is a 6 % chance of a storm occurring in the month with waves peaking at 4m (13 ft) or greater.

Wave Height Weather Days Probability Distribution Function

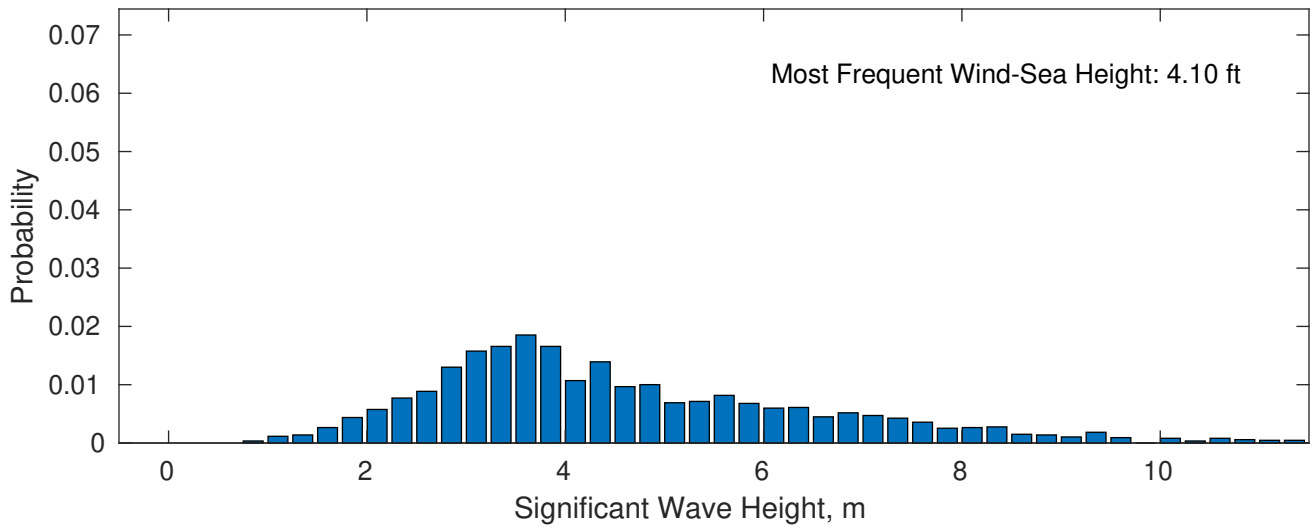




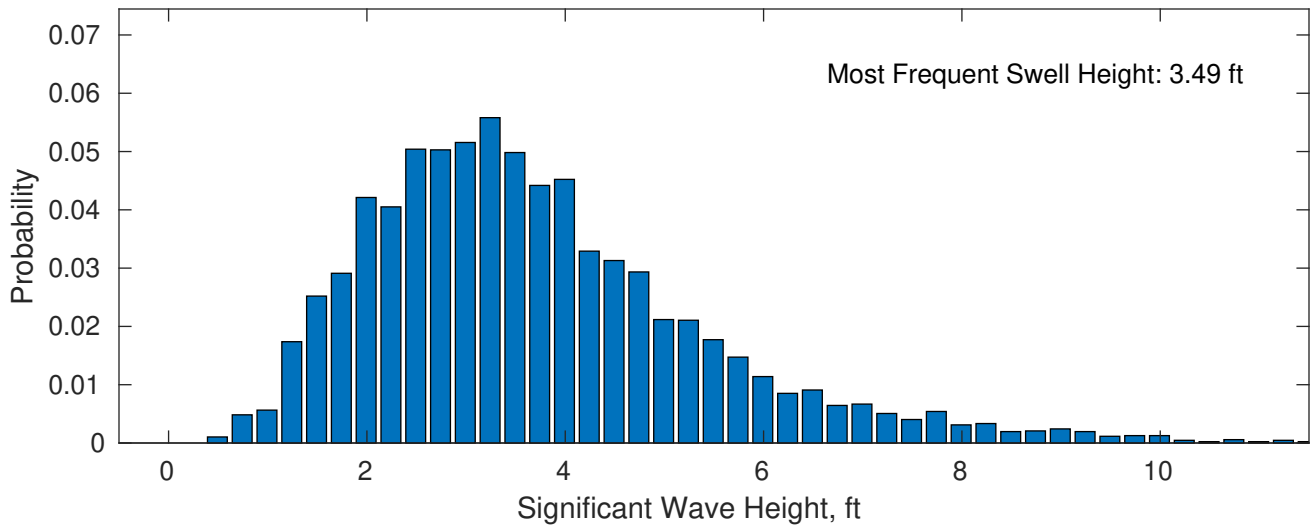
May Wave Height PDF: 1979 - 2015



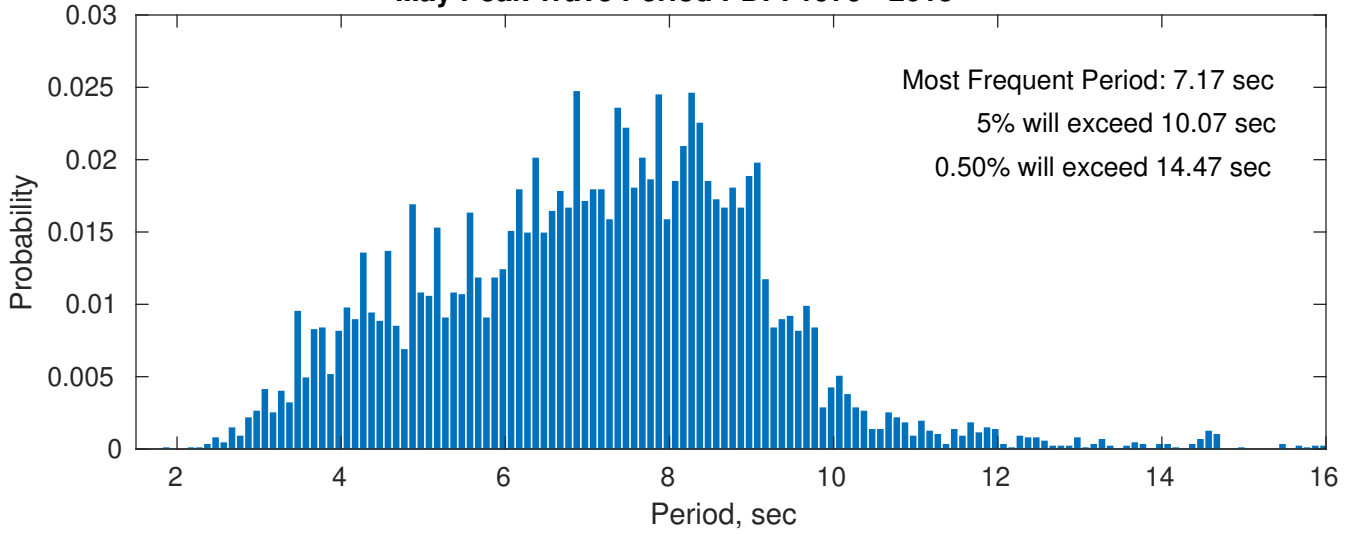
Wind-Sea: 24.04%



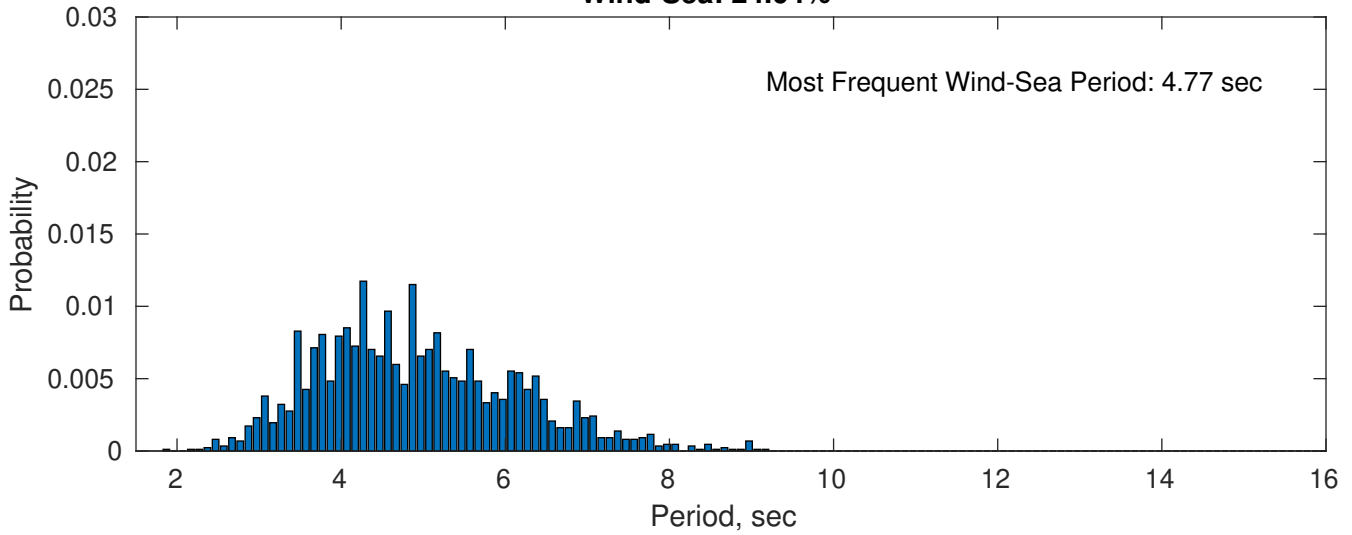
Swell: 75.96%



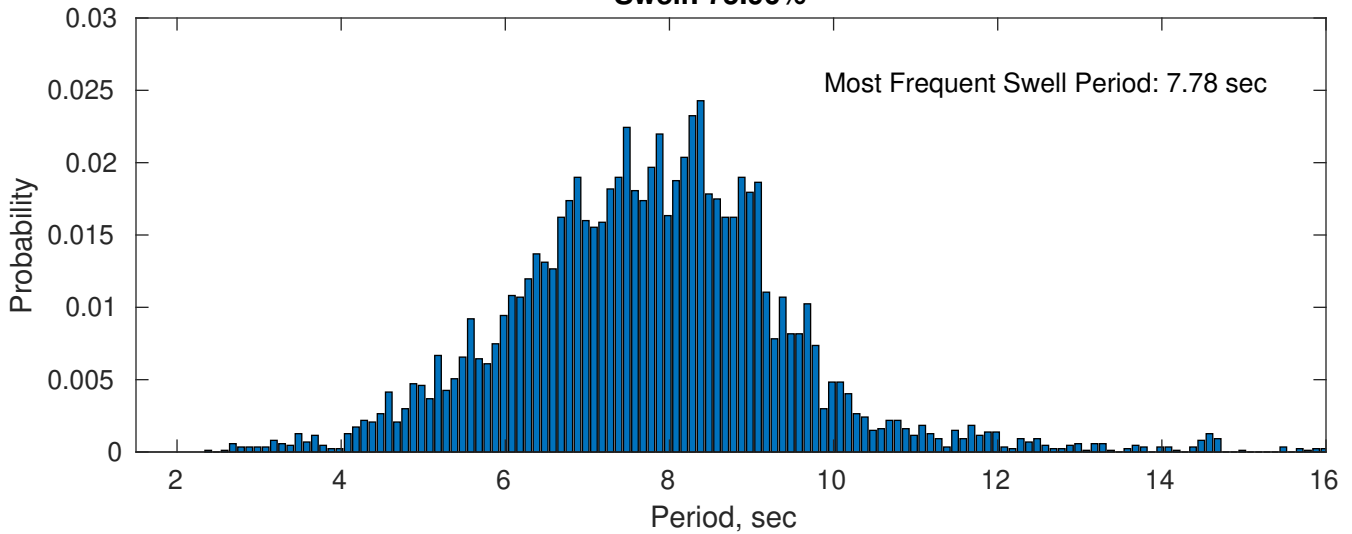
May Peak Wave Period PDF: 1979 - 2015



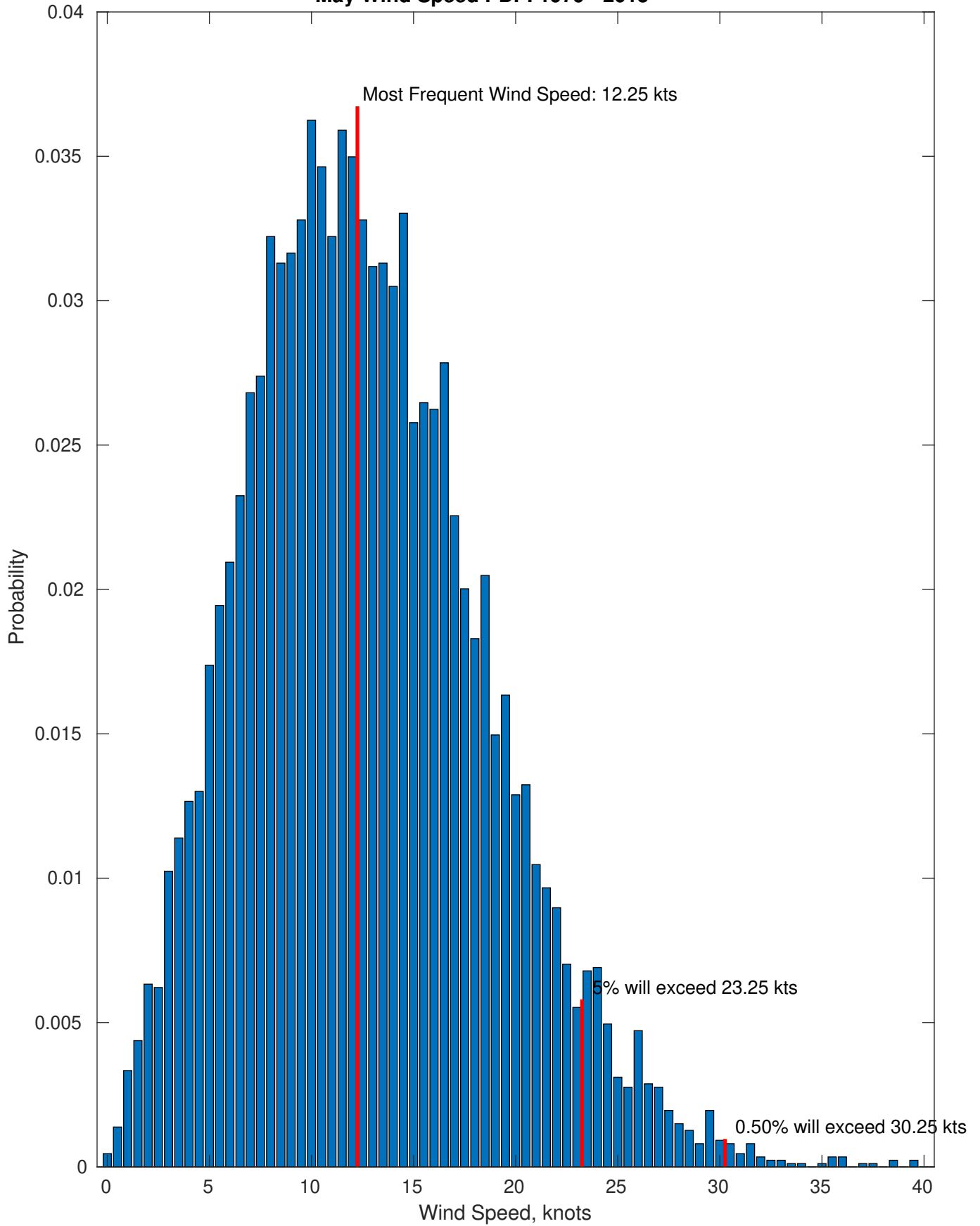
Wind-Sea: 24.04%



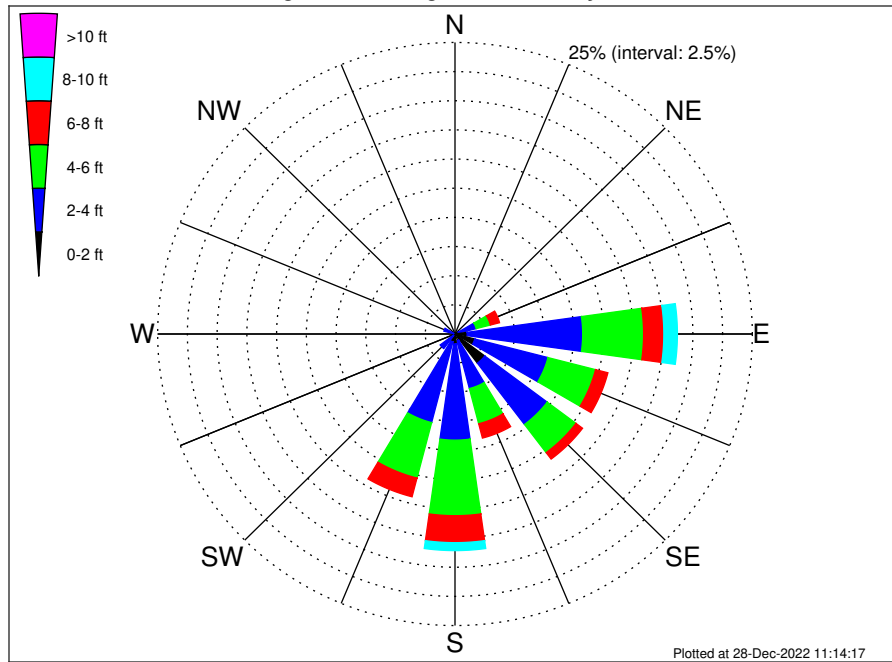
Swell: 75.96%



May Wind Speed PDF: 1979 - 2015



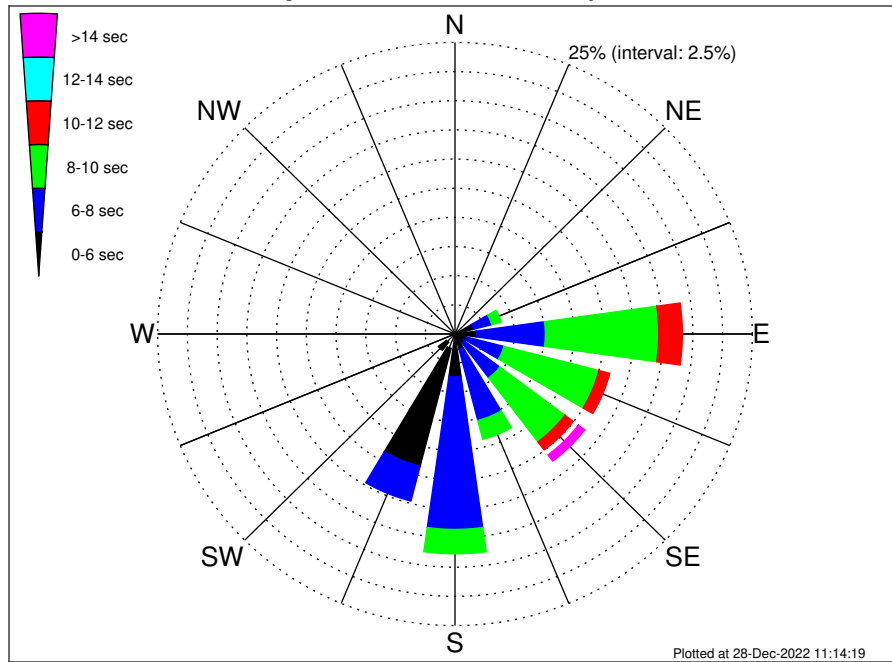
OCS A-0544 Climatological WaveHeight Rose for May: 1979 - 2015



Joint Frequency Distribution Table

	N	NNE	NE	ENE	E	ESE	SE	SSE	S	SSW	SW	WSW	W	WNW	NW	NNW	Total
calm	•	•	•	0.05	0.02	0.07	0.32	0.03	0.01	0.06	0.02	0.01	0.02	•	•	•	0.62
1 - 2 ft	0.06	0.02	0.03	0.28	1.00	1.65	2.81	0.56	0.84	0.63	0.17	0.05	0.03	0.13	0.12	0.08	8.46
2 - 4 ft	0.17	0.23	0.22	1.52	9.71	6.36	6.58	4.23	8.25	7.16	1.37	0.15	0.37	0.84	0.60	0.39	48.16
4 - 6 ft	0.07	0.14	0.15	1.23	5.12	4.13	3.03	3.12	6.48	4.91	0.20	0.02	0.08	0.17	0.10	0.15	29.10
6 - 8 ft	•	0.02	0.03	0.79	1.70	1.07	0.69	1.27	2.31	1.66	•	0.02	0.05	0.05	•	•	9.67
8 - 10 ft	•	•	0.03	0.12	1.14	0.28	0.17	0.23	0.68	0.36	•	•	•	•	•	•	3.00
10 - 12 ft	•	•	•	0.02	0.30	0.12	0.01	•	0.25	0.02	•	•	•	•	•	•	0.72
12 - 14 ft	•	•	•	0.01	0.14	0.02	0.02	•	0.02	•	•	•	•	•	•	•	0.22
14 - 16 ft	•	•	•	•	0.01	0.01	0.01	•	0.01	•	•	•	•	•	•	•	0.05
16 - 18 ft	•	•	•	•	•	•	•	•	•	•	•	•	•	•	•	•	•
> 18 ft	•	•	•	•	•	•	•	•	•	•	•	•	•	•	•	•	•
Total	0.30	0.41	0.47	4.02	19.15	13.71	13.65	9.45	18.86	14.80	1.76	0.25	0.55	1.19	0.82	0.62	100.00

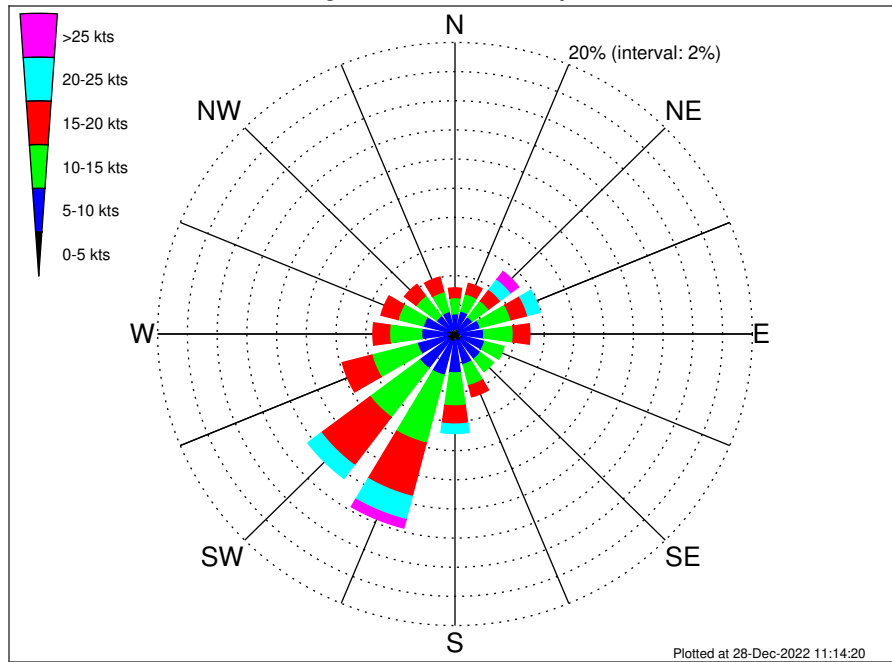
OCS A-0544 Climatological WavePeriod Rose for May: 1979 - 2015



Joint Frequency Distribution Table

	N	NNE	NE	ENE	E	ENE	SE	SSE	S	SSW	SW	WSW	W	WNW	NW	NNW	Total
calm
1 - 2 sec	0.01	0.01
2 - 4 sec	0.22	0.22	0.22	0.17	0.21	0.07	0.08	0.22	0.23	1.28	0.90	0.17	0.32	0.77	0.69	0.47	6.24
4 - 6 sec	0.08	0.20	0.22	1.42	1.61	0.93	0.90	1.16	3.44	10.44	0.86	0.07	0.23	0.41	0.13	0.15	22.24
6 - 8 sec	.	.	0.03	1.60	5.78	3.25	3.73	6.27	13.08	3.08	36.82
8 - 10 sec	.	.	.	0.81	9.53	8.25	6.87	1.67	2.09	29.22
10 - 12 sec	.	.	.	0.02	1.99	0.94	0.87	0.13	0.01	3.97
12 - 14 sec	0.03	0.26	0.53	0.83
14 - 16 sec	0.53	0.53
18 - 20 sec	0.14	0.14
22 - 24 sec
Total	0.30	0.41	0.47	4.02	19.15	13.71	13.65	9.45	18.86	14.80	1.76	0.25	0.55	1.19	0.82	0.62	100.00

OCS A-0544 Climatological Wind Rose for May: 1979 - 2015



Joint Frequency Distribution Table

	N	NNE	NE	ENE	E	ESE	SE	SSE	S	SSW	SW	WSW	W	WNW	NW	NNW	Total
calm	•	0.02	0.01	•	•	0.01	•	0.01	0.01	0.01	0.03	0.01	0.03	0.01	•	0.01	0.18
0 - 5 kts	0.32	0.39	0.32	0.29	0.38	0.48	0.51	0.52	0.39	0.54	0.54	0.54	0.35	0.51	0.33	0.35	6.75
5 - 10 kts	1.07	1.21	1.13	1.46	1.55	1.57	1.62	1.63	2.27	2.37	2.37	2.07	1.86	1.68	1.22	1.23	26.32
10 - 15 kts	1.10	1.22	1.38	2.14	1.99	1.35	1.10	1.50	2.27	4.81	4.20	3.15	2.16	1.77	1.73	1.40	33.28
15 - 20 kts	0.67	0.75	0.98	1.16	1.12	0.49	0.43	0.79	1.24	3.77	4.12	2.06	1.12	1.17	0.98	1.05	21.90
20 - 25 kts	0.36	0.49	0.89	0.86	0.48	0.13	0.18	0.22	0.64	1.65	1.14	0.31	0.16	0.45	0.37	0.31	8.64
25 - 30 kts	0.10	0.20	0.53	0.29	0.05	0.01	0.01	0.05	0.16	0.53	0.14	•	0.12	0.09	0.05	0.06	2.37
30 - 35 kts	0.01	0.05	0.08	0.07	0.01	•	0.01	0.02	0.03	0.07	0.01	•	•	0.02	0.01	•	0.40
35 - 40 kts	•	0.05	0.05	•	0.05	•	•	0.01	•	•	•	•	•	•	•	•	0.15
40 - 45 kts	•	•	•	•	•	•	•	•	•	•	•	•	•	•	•	•	•
45 - 50 kts	•	•	•	•	•	•	•	•	•	•	•	•	•	•	•	•	•
Total	3.64	4.37	5.36	6.27	5.63	4.04	3.87	4.75	7.02	13.75	12.55	8.15	5.80	5.71	4.68	4.41	100.00