

OCS A-0544 - November

Latitude: 40.24 N Longitude: 73.08 W

Weather Days

Wave Height > 4.0 ft Mean: 16.0 days Range: 13.0 - 18.9 days p50:17.5 days p75:15 days p90:14 days
Wave Height > 5.0 ft Mean: 11.0 days Range: 8.2 - 13.9 days p50:11.5 days p75:10.5 days p90:8.5 days
Wave Height > 6.0 ft Mean: 7.2 days Range: 4.7 - 9.7 days p50:8 days p75:6.5 days p90:5 days
Wind Speed > 20.0 knots Mean: 9.4 days Range: 6.7 - 12.2 days p50:9.5 days p75:8 days p90:5.5 days
Wind Speed > 25.0 knots Mean: 4.1 days Range: 2.2 - 6.0 days p50:4.5 days p75:3 days p90:2 days
Wind Speed > 30.0 knots Mean: 1.3 days Range: 0.4 - 2.2 days p50:1.5 days p75:1 days p90:0.5 days

Working Window Probability

Wave Height < 4.0 ft	3 days or longer: 25%
	5 days or longer: 3%
	7 days or longer: 0%
Wave Height < 5.0 ft	3 days or longer: 41%
	5 days or longer: 7%
	7 days or longer: 3%
Wave Height < 6.0 ft	3 days or longer: 57%
	5 days or longer: 21%
	7 days or longer: 6%

Waves

Mean Height: 4 - 6 ft

The wave heights will occasionally reach 14 - 16 ft, but rarely higher.

Mean Period: 6 - 8 sec

The wave periods will occasionally reach 12 - 14 sec, but rarely longer.

Principle Direction, from: ESE

WindSea/Swell: 44% / 56%

Winds

Mean Speed: 15 - 20 kts

The winds will occasionally reach 35 - 40 kts, but rarely greater.

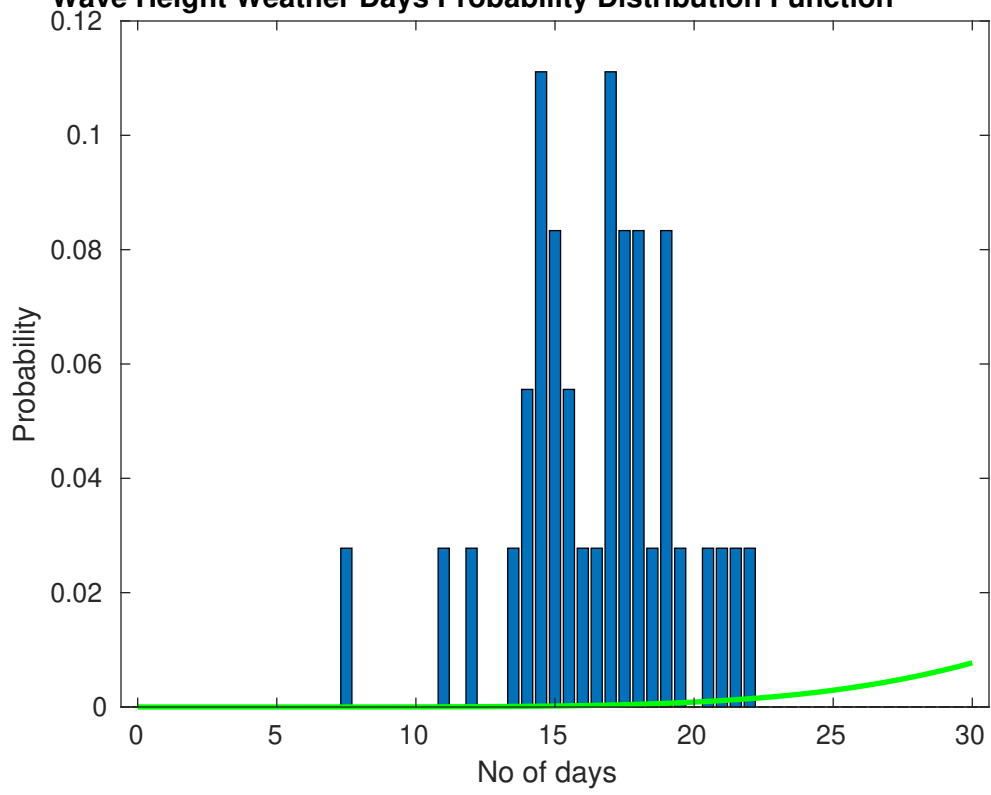
Principle Direction, from: NW

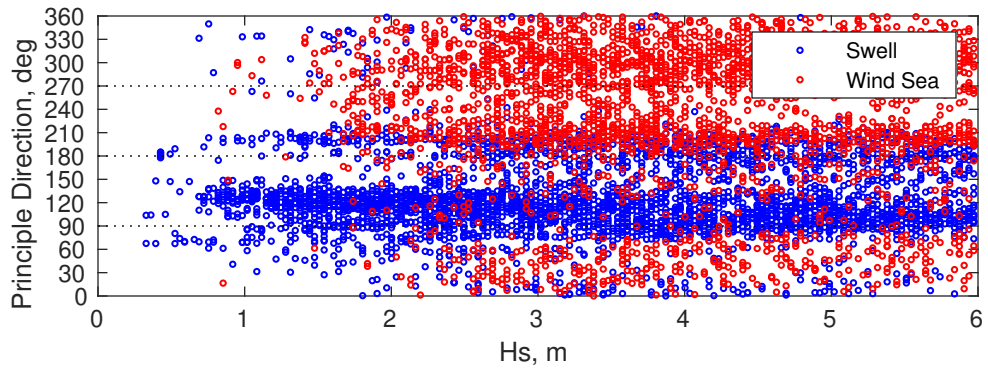
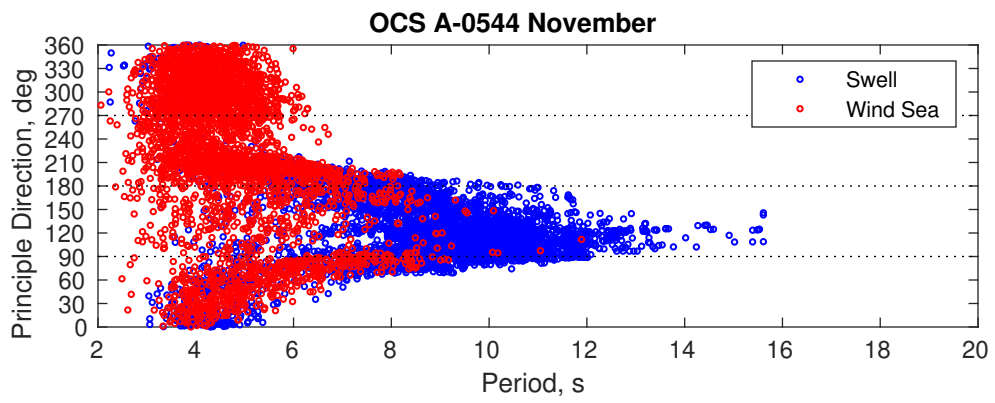
Severe Storms

There is a 61 % chance of a storm occurring in the month with winds peaking above 34 kts.

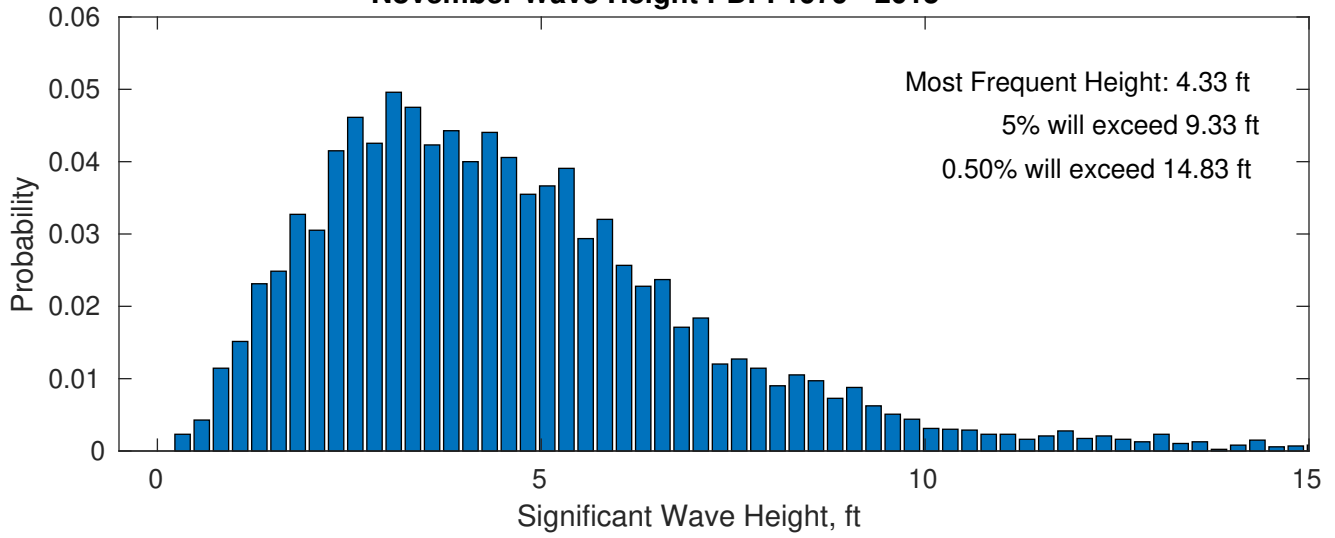
There is a 53 % chance of a storm occurring in the month with waves peaking at 4m (13 ft) or greater.

Wave Height Weather Days Probability Distribution Function

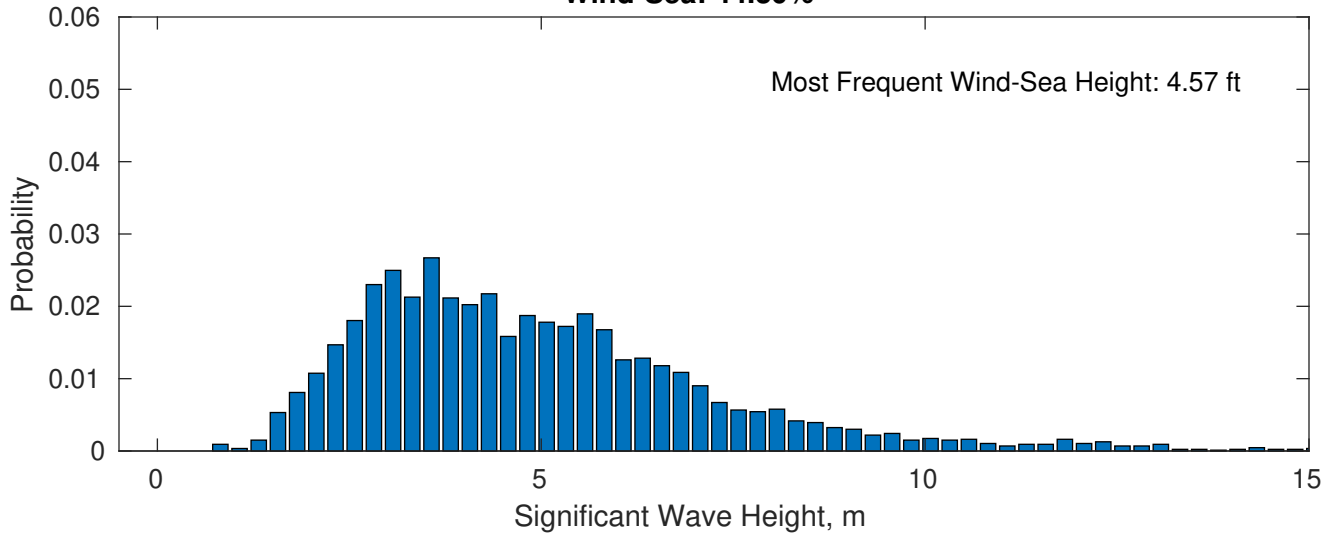




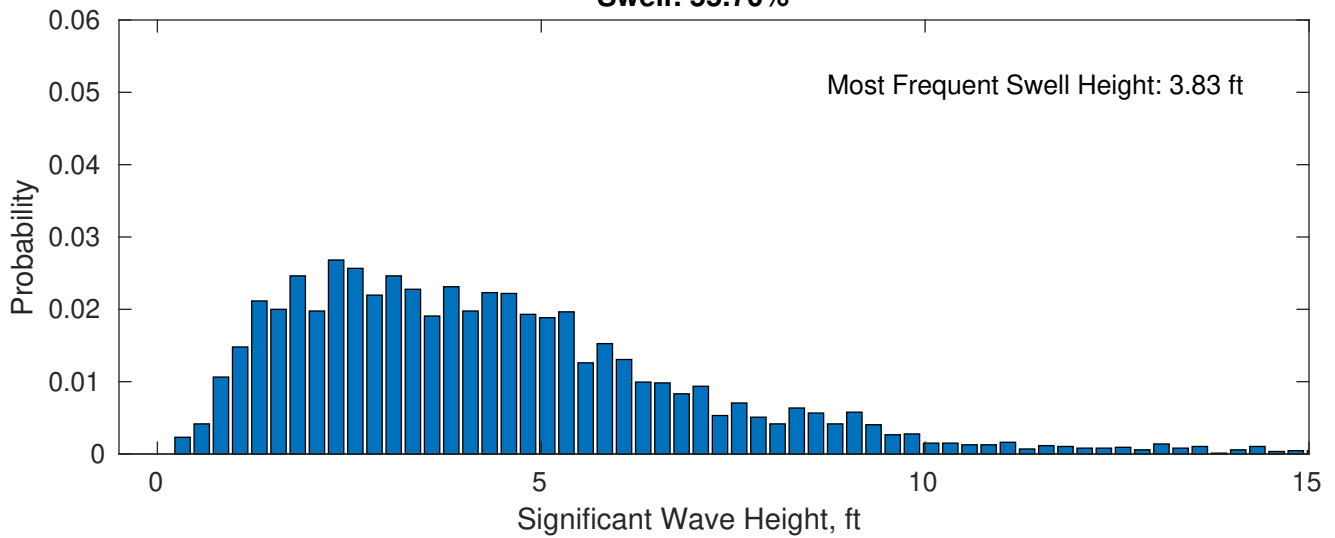
November Wave Height PDF: 1979 - 2015



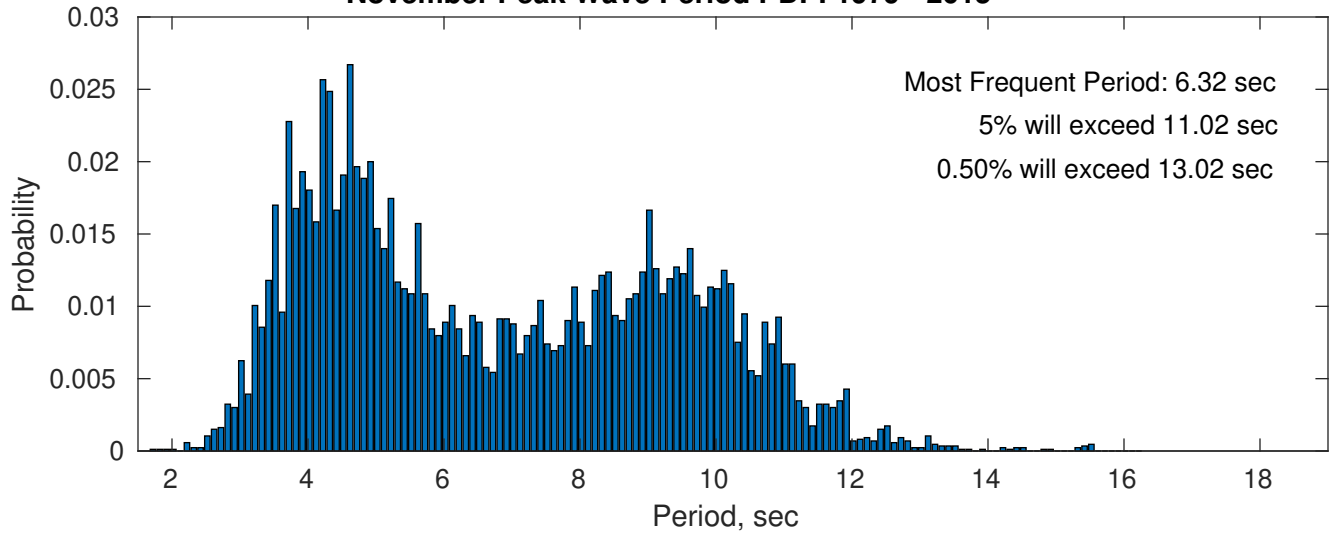
Wind-Sea: 44.30%



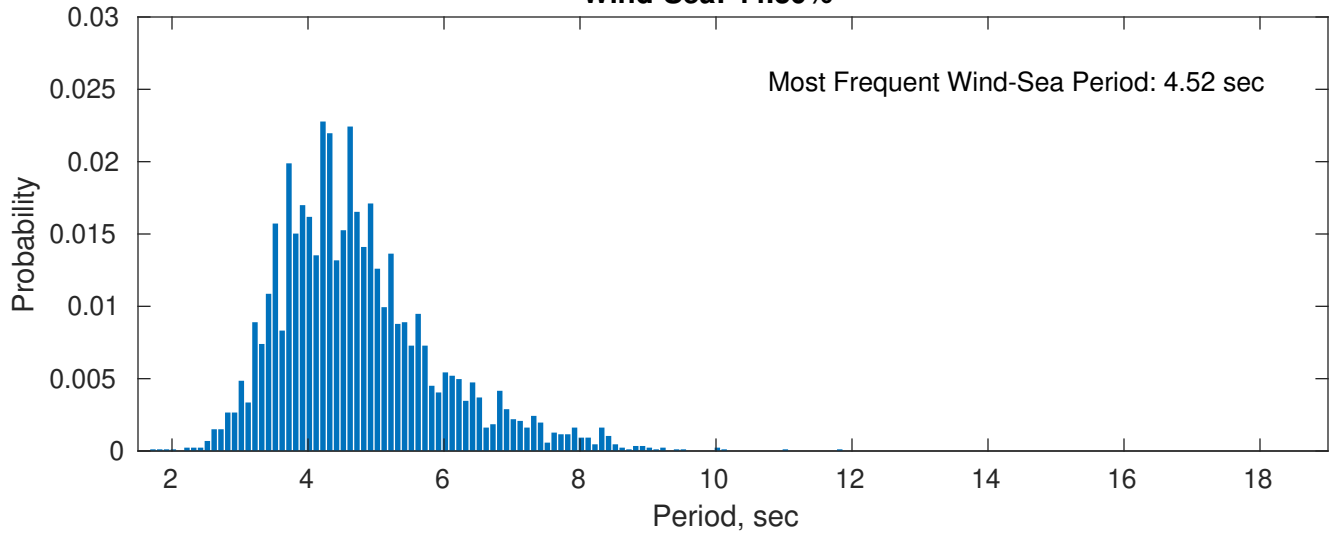
Swell: 55.70%



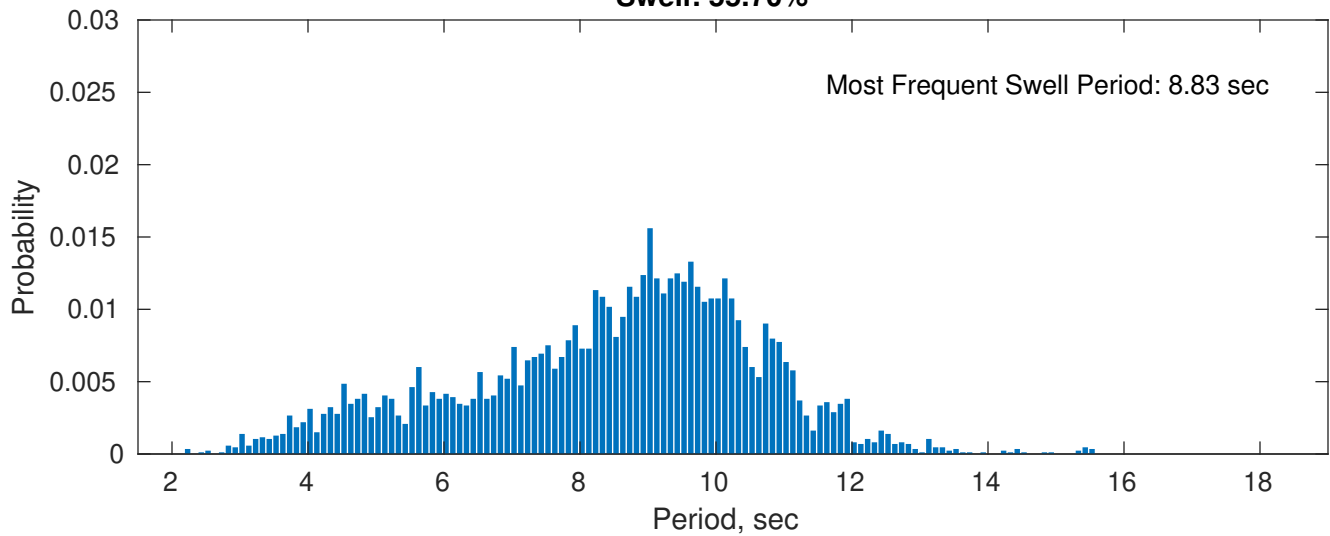
November Peak Wave Period PDF: 1979 - 2015



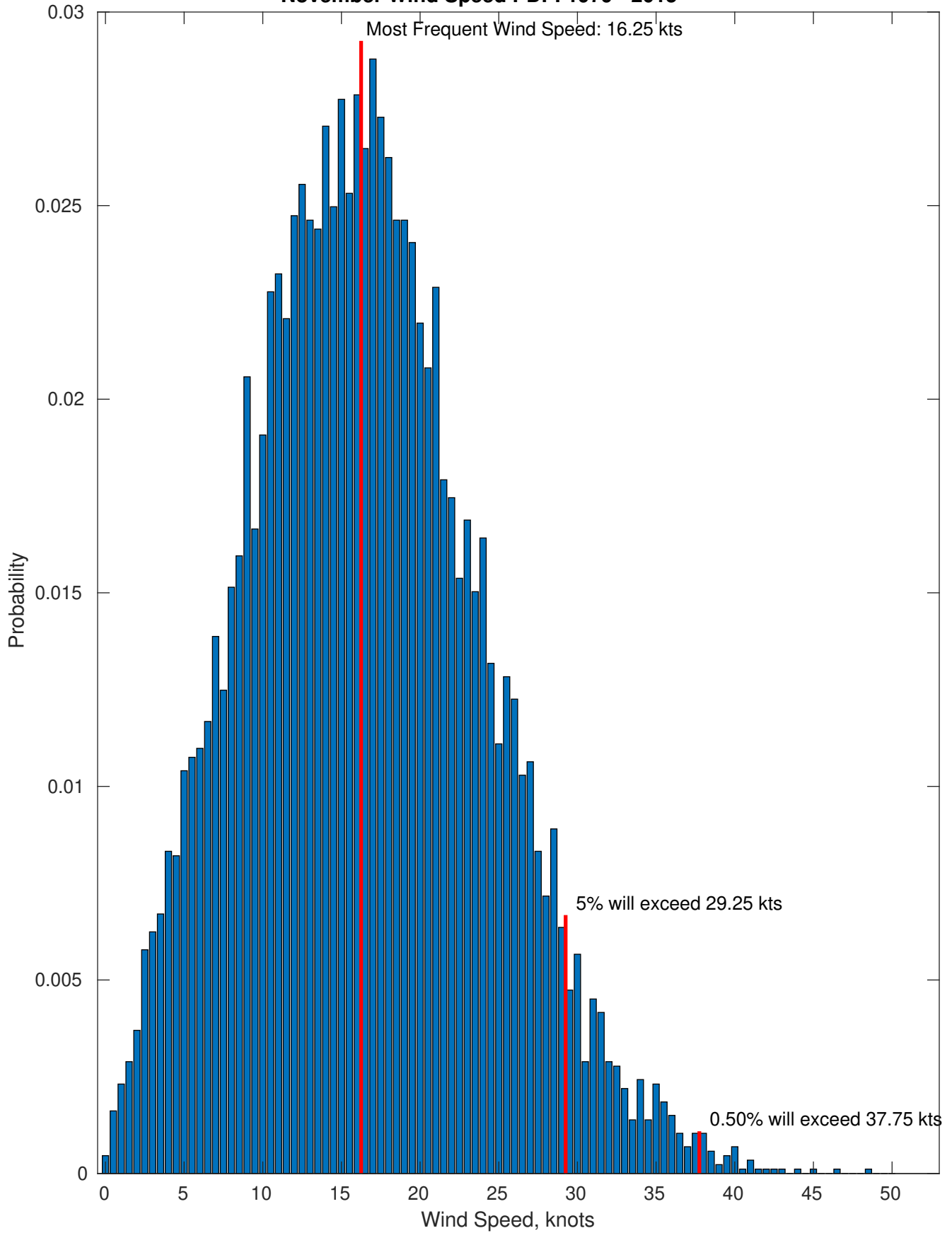
Wind-Sea: 44.30%



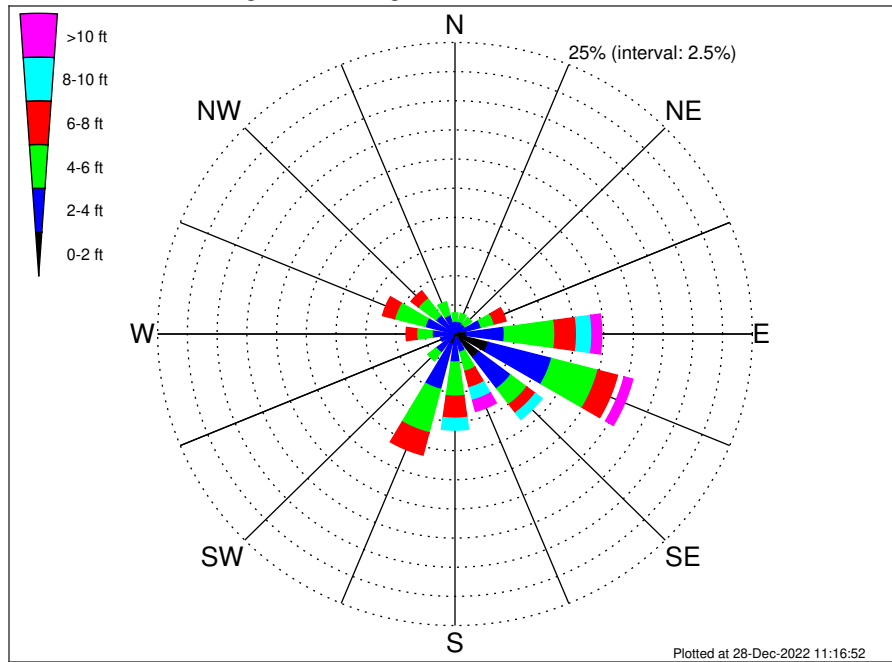
Swell: 55.70%



November Wind Speed PDF: 1979 - 2015



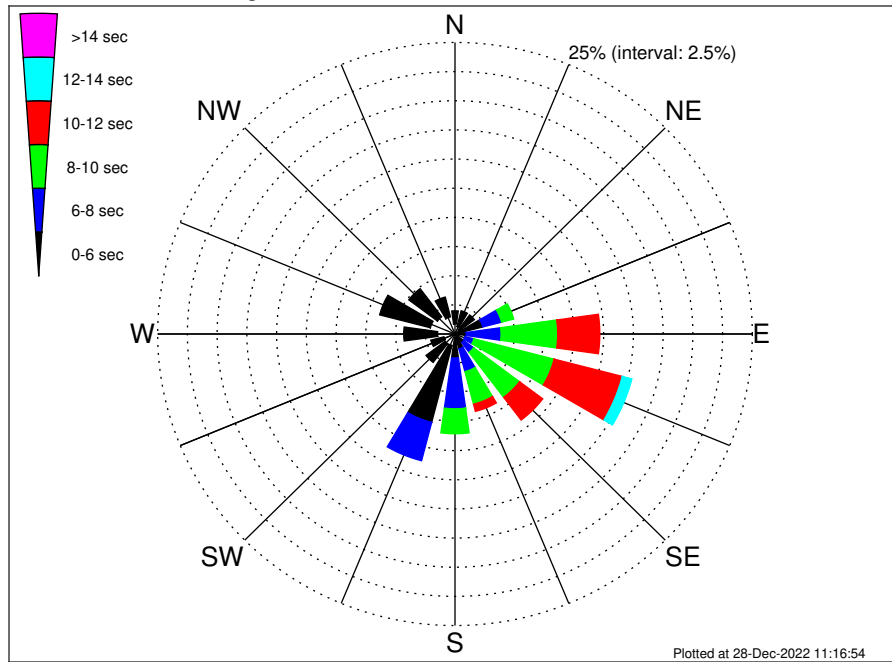
OCS A-0544 Climatological WaveHeight Rose for November: 1979 - 2015



Joint Frequency Distribution Table

	N	NNE	NE	ENE	E	ESE	SE	SSE	S	SSW	SW	WSW	W	WNW	NW	NNW	Total
calm	0.01	0.01	0.01	0.17	0.02	0.30	0.52	0.09	0.12	0.08	0.01	0.01	0.01	0.03	•	0.02	1.43
1 - 2 ft	0.06	0.07	0.16	0.40	0.92	2.60	1.98	0.24	0.23	0.80	0.21	0.23	0.20	0.22	0.21	0.21	8.74
2 - 4 ft	1.04	1.04	0.88	1.70	3.20	5.49	3.35	1.27	2.06	4.02	1.77	0.99	1.72	2.35	1.80	1.46	34.15
4 - 6 ft	0.71	0.72	0.72	1.13	4.25	4.02	1.70	1.69	2.92	3.84	0.88	0.59	1.31	2.65	1.85	1.17	30.14
6 - 8 ft	0.16	0.21	0.29	1.03	1.83	1.70	0.91	1.46	1.90	1.99	0.23	0.25	0.88	1.05	0.77	0.36	15.02
8 - 10 ft	•	0.01	0.10	0.43	1.28	0.57	0.71	1.11	1.02	0.38	•	0.02	0.25	0.24	0.24	0.06	6.43
10 - 12 ft	0.01	•	•	0.14	0.37	0.23	0.15	0.52	0.38	0.13	0.01	0.05	0.02	0.03	•	•	2.05
12 - 14 ft	•	•	•	0.09	0.34	0.27	0.15	0.25	0.07	0.07	•	•	•	•	•	•	1.24
14 - 16 ft	•	•	•	0.01	0.10	0.13	0.16	0.13	0.01	0.01	•	•	•	•	•	•	0.55
16 - 18 ft	•	•	•	•	•	0.09	0.01	0.03	•	•	•	•	•	•	•	•	0.14
> 18 ft	•	•	•	•	0.01	0.05	•	0.06	•	•	•	•	•	•	•	•	0.12
Total	1.99	2.06	2.16	5.11	12.34	15.45	9.64	6.86	8.71	11.32	3.11	2.15	4.39	6.58	4.88	3.27	100.00

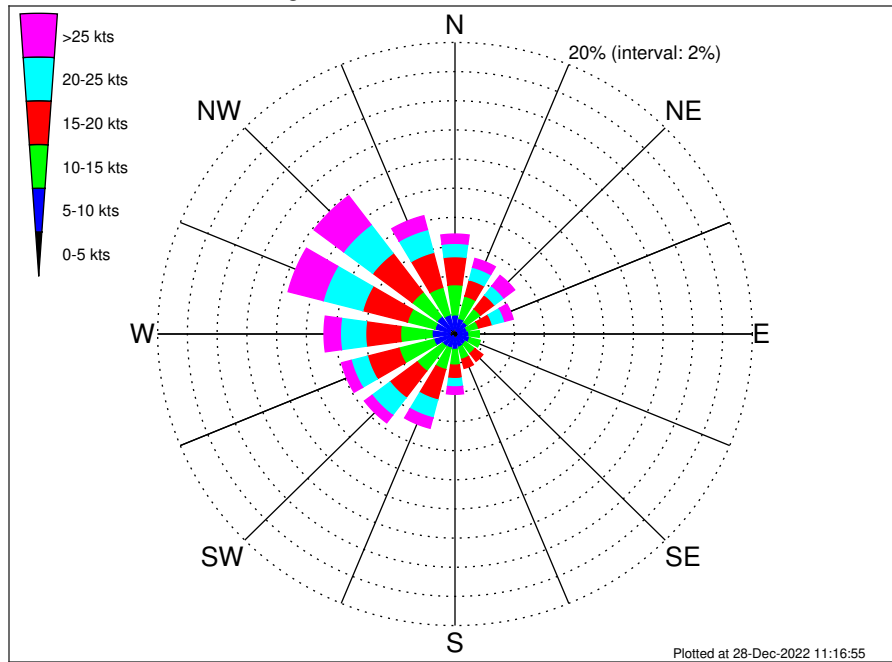
OCS A-0544 Climatological WavePeriod Rose for November: 1979 - 2015



Joint Frequency Distribution Table

	N	NNE	NE	ENE	E	ESE	SE	SSE	S	SSW	SW	WSW	W	WNW	NW	NNW	Total
calm	•	•	•	•	•	•	•	•	•	•	•	•	•	•	•	•	•
1 - 2 sec	•	0.01	•	•	•	•	•	0.01	•	•	0.01	•	•	•	•	•	0.03
2 - 4 sec	0.87	0.65	0.46	0.28	0.08	0.24	0.17	0.30	0.34	1.02	1.03	0.96	1.47	2.14	1.85	1.51	13.36
4 - 6 sec	1.12	1.40	1.58	2.14	0.87	0.61	0.75	1.01	1.72	6.81	2.01	1.14	2.84	4.40	3.02	1.76	33.19
6 - 8 sec	•	•	0.12	1.63	2.92	0.79	1.04	2.01	4.36	3.40	0.06	0.05	0.08	0.03	0.01	•	16.50
8 - 10 sec	•	•	•	1.05	4.76	6.97	4.83	2.89	2.14	0.09	•	•	•	•	•	•	22.74
10 - 12 sec	•	•	•	0.01	3.54	5.92	2.44	0.64	0.15	•	•	•	•	•	•	•	12.69
12 - 14 sec	•	•	•	•	0.16	0.83	0.27	•	•	•	•	•	•	•	•	•	1.26
14 - 16 sec	•	•	•	•	•	0.08	0.14	•	•	•	•	•	•	•	•	•	0.22
18 - 20 sec	•	•	•	•	•	•	•	•	•	•	•	•	•	•	•	•	•
22 - 24 sec	•	•	•	•	•	•	•	•	•	•	•	•	•	•	•	•	•
Total	1.99	2.06	2.16	5.11	12.34	15.45	9.64	6.86	8.71	11.32	3.11	2.15	4.39	6.58	4.88	3.27	100.00

OCS A-0544 Climatological Wind Rose for November: 1979 - 2015



Joint Frequency Distribution Table

	N	NNE	NE	ENE	E	ESE	SE	SSE	S	SSW	SW	WSW	W	WNW	NW	NNW	Total
calm	0.03	0.02	•	0.01	0.02	0.01	•	0.01	0.01	•	0.01	•	0.02	0.01	0.02	0.01	0.21
0 - 5 kts	0.34	0.22	0.23	0.22	0.21	0.24	0.23	0.29	0.30	0.24	0.17	0.34	0.38	0.32	0.38	0.30	4.42
5 - 10 kts	0.95	0.87	0.79	0.61	0.72	0.76	0.65	0.64	0.75	0.76	0.86	1.14	1.14	1.06	1.10	1.05	13.85
10 - 15 kts	2.07	1.57	1.13	0.80	0.69	0.74	0.80	0.86	1.08	1.51	2.14	2.40	2.12	1.91	2.09	1.94	23.85
15 - 20 kts	1.92	1.16	1.18	0.95	0.45	0.49	0.67	0.65	0.92	2.15	2.30	2.20	2.35	3.11	3.34	2.47	26.30
20 - 25 kts	0.91	0.89	0.79	0.87	0.35	0.21	0.34	0.46	0.57	1.27	1.50	1.13	1.70	2.74	2.45	1.62	17.79
25 - 30 kts	0.45	0.32	0.44	0.30	0.17	0.15	0.16	0.21	0.37	0.54	0.58	0.54	0.82	1.68	1.69	0.83	9.26
30 - 35 kts	0.13	0.16	0.36	0.16	0.03	0.08	0.10	0.15	0.09	0.10	0.07	0.08	0.16	0.54	0.68	0.12	3.03
35 - 40 kts	0.06	0.13	0.12	0.10	0.01	0.02	0.01	0.08	0.01	0.08	•	0.05	0.08	0.17	0.12	0.03	1.08
40 - 45 kts	•	0.01	•	0.01	•	0.01	•	0.01	0.03	0.01	•	•	0.03	0.05	•	•	0.17
45 - 50 kts	•	•	•	0.01	0.01	•	•	0.02	•	•	•	•	•	•	•	•	0.05
Total	6.86	5.35	5.03	4.05	2.67	2.72	2.96	3.38	4.14	6.68	7.63	7.88	8.81	11.60	11.87	8.38	100.00