

## OCS A-0544 - October

Latitude: 40.24 N Longitude: 73.08 W

### Weather Days

Wave Height > 4.0 ft Mean: 13.5 days Range: 10.6 - 16.5 days p50:15 days p75:13.5 days p90:11.5 days

Wave Height > 5.0 ft Mean: 8.6 days Range: 5.9 - 11.3 days p50:10 days p75:8 days p90:6.5 days

Wave Height > 6.0 ft Mean: 5.4 days Range: 3.1 - 7.8 days p50:6 days p75:5 days p90:3 days

Wind Speed > 20.0 knots Mean: 6.8 days Range: 5.1 - 8.6 days p50:7 days p75:6 days p90:4.5 days

Wind Speed > 25.0 knots Mean: 2.3 days Range: 1.2 - 3.4 days p50:2.5 days p75:1.5 days p90:1 days

Wind Speed > 30.0 knots Mean: 0.7 days Range: 0.1 - 1.3 days p50:1 days p75:0.5 days p90:0.5 days

### Working Window Probability

Wave Height < 4.0 ft  
3 days or longer: 33%  
5 days or longer: 5%  
7 days or longer: 1%

Wave Height < 5.0 ft  
3 days or longer: 48%  
5 days or longer: 14%  
7 days or longer: 8%

Wave Height < 6.0 ft  
3 days or longer: 65%  
5 days or longer: 31%  
7 days or longer: 20%

### Waves

Mean Height: 2 - 4 ft

The wave heights will occasionally reach 14 - 16 ft, but rarely higher.

Mean Period: 6 - 8 sec

The wave periods will occasionally reach 12 - 14 sec, but rarely longer.

Principle Direction, from: ESE

WindSea/Swell: 34% / 66%

### Winds

Mean Speed: 10 - 15 kts

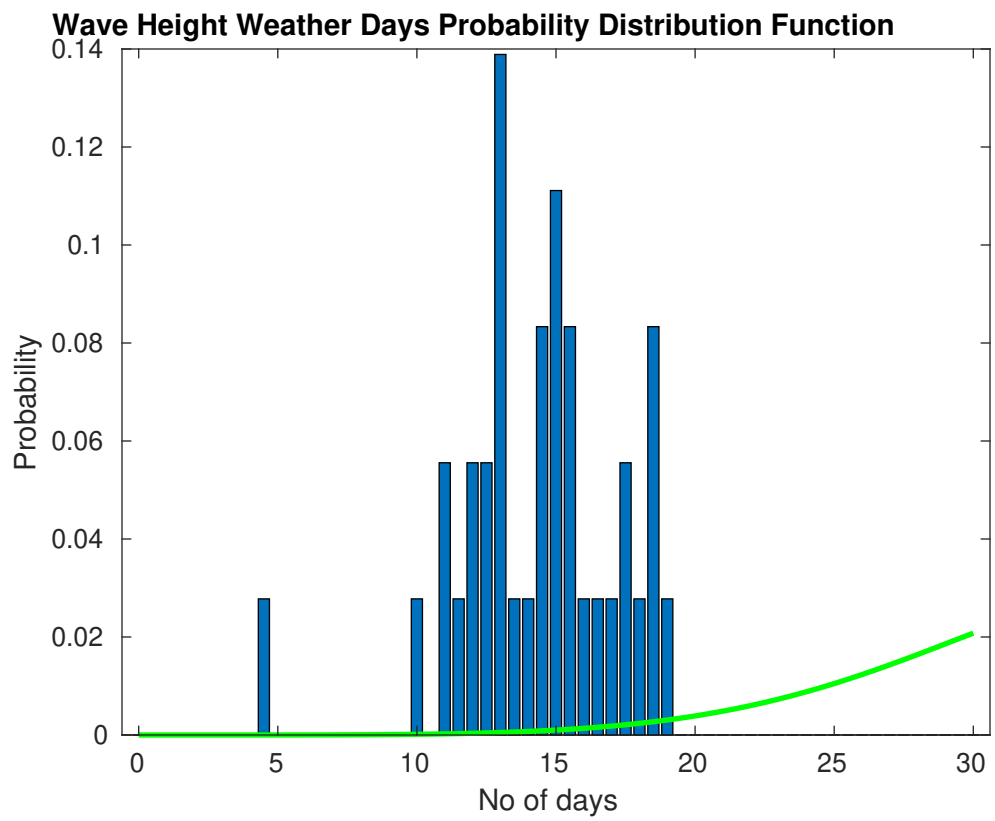
The winds will occasionally reach 30 - 35 kts, but rarely greater.

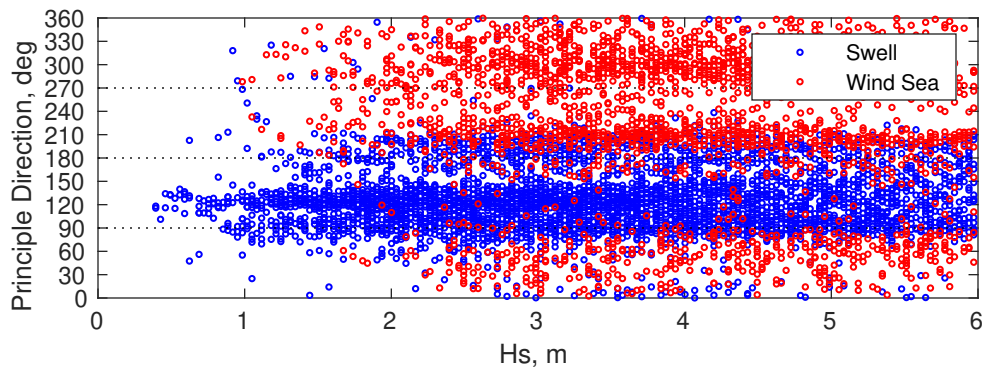
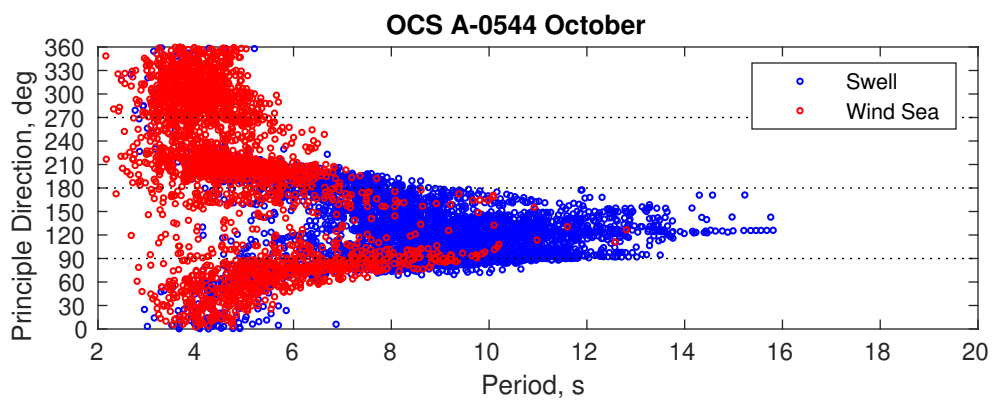
Principle Direction, from: WNW

### Severe Storms

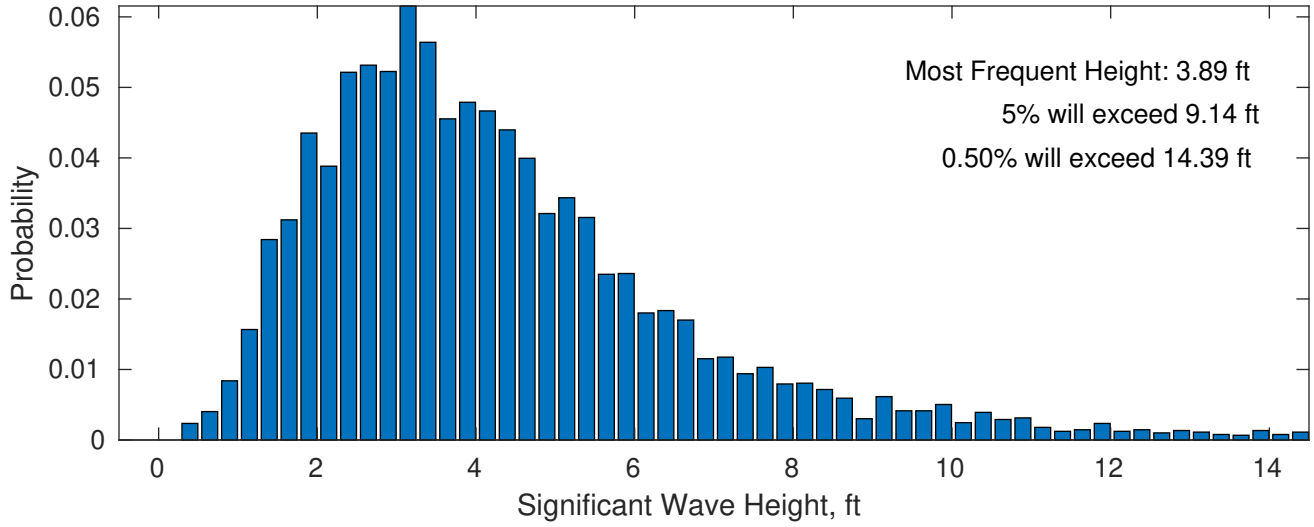
There is a 36 % chance of a storm occurring in the month with winds peaking above 34 kts.

There is a 47 % chance of a storm occurring in the month with waves peaking at 4m (13 ft) or greater.

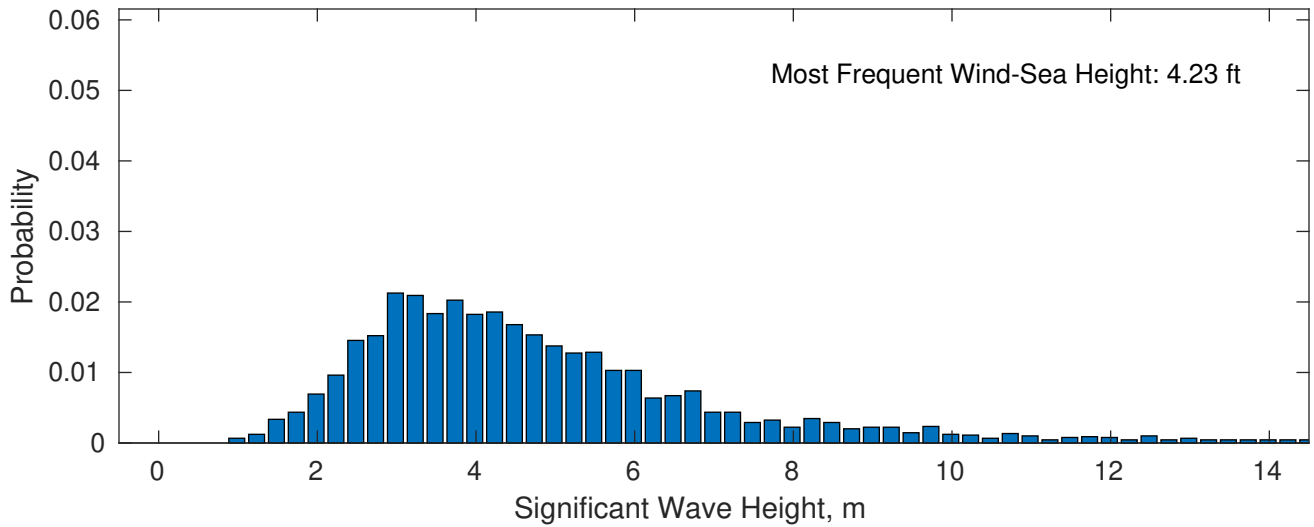




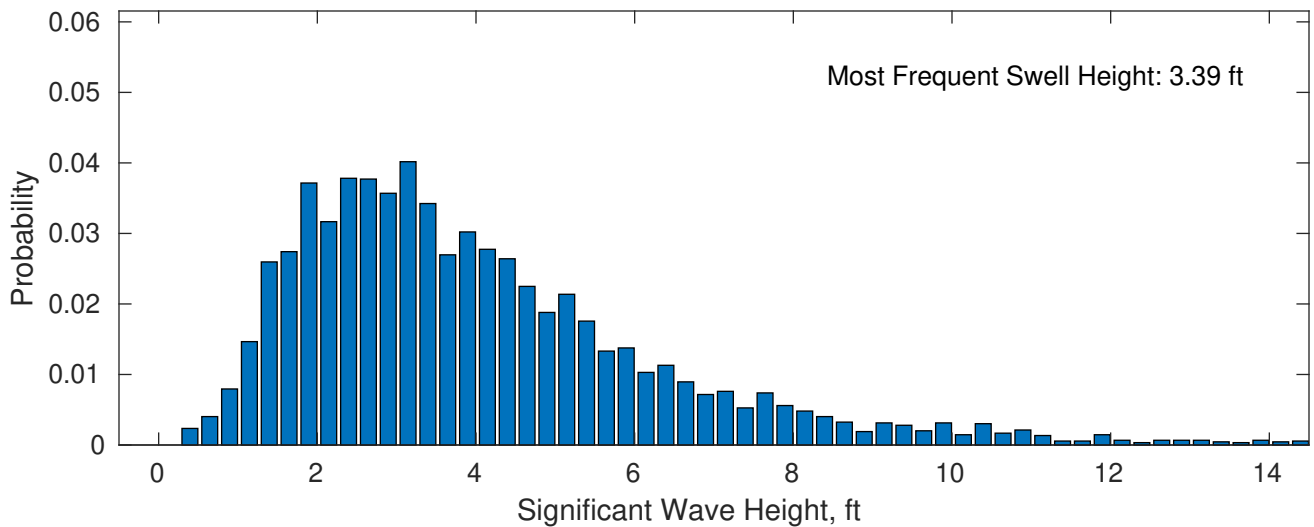
### October Wave Height PDF: 1979 - 2015



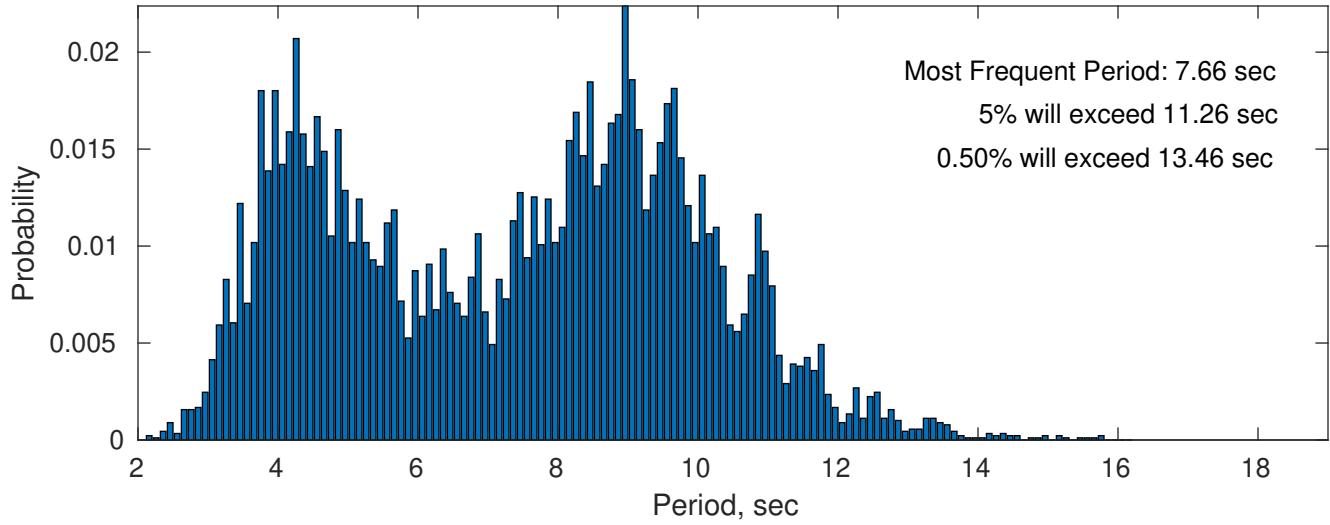
### Wind-Sea: 33.58%



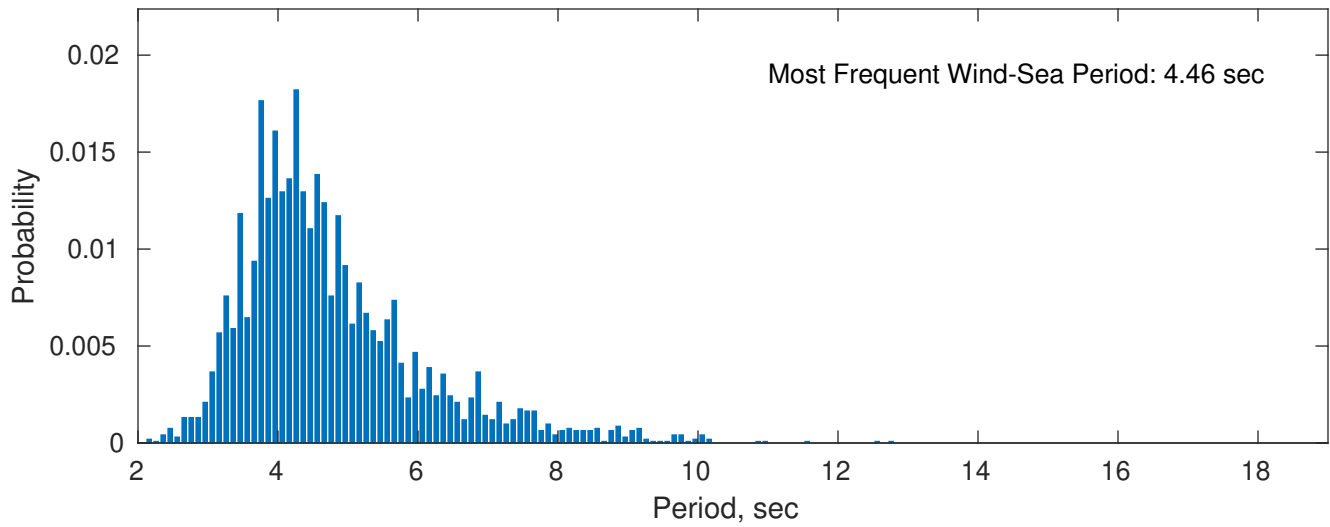
### Swell: 66.42%



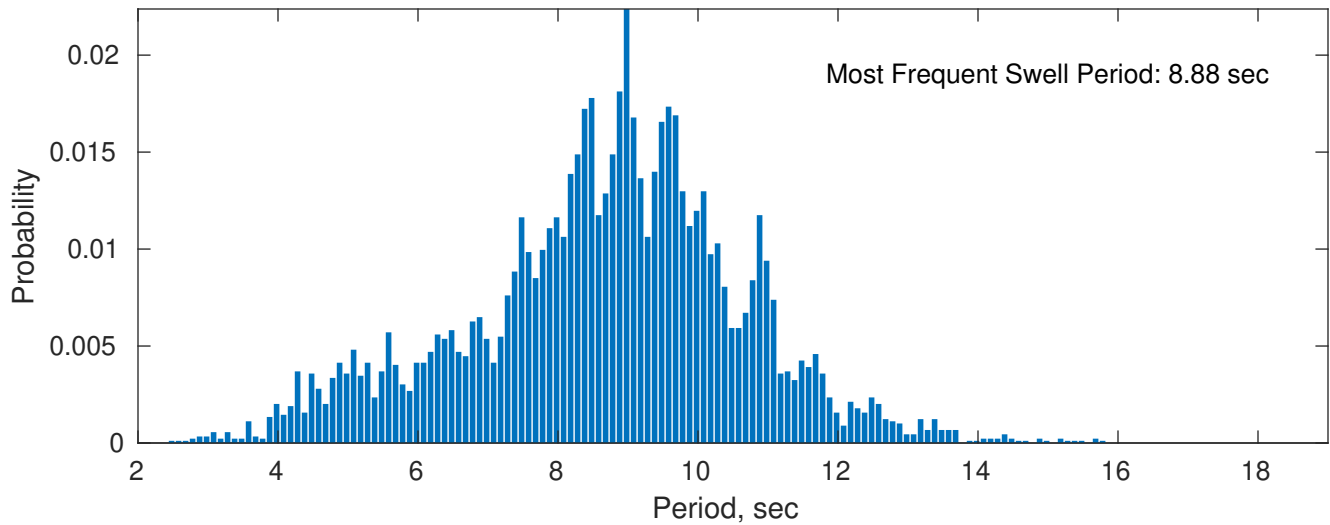
**October Peak Wave Period PDF: 1979 - 2015**



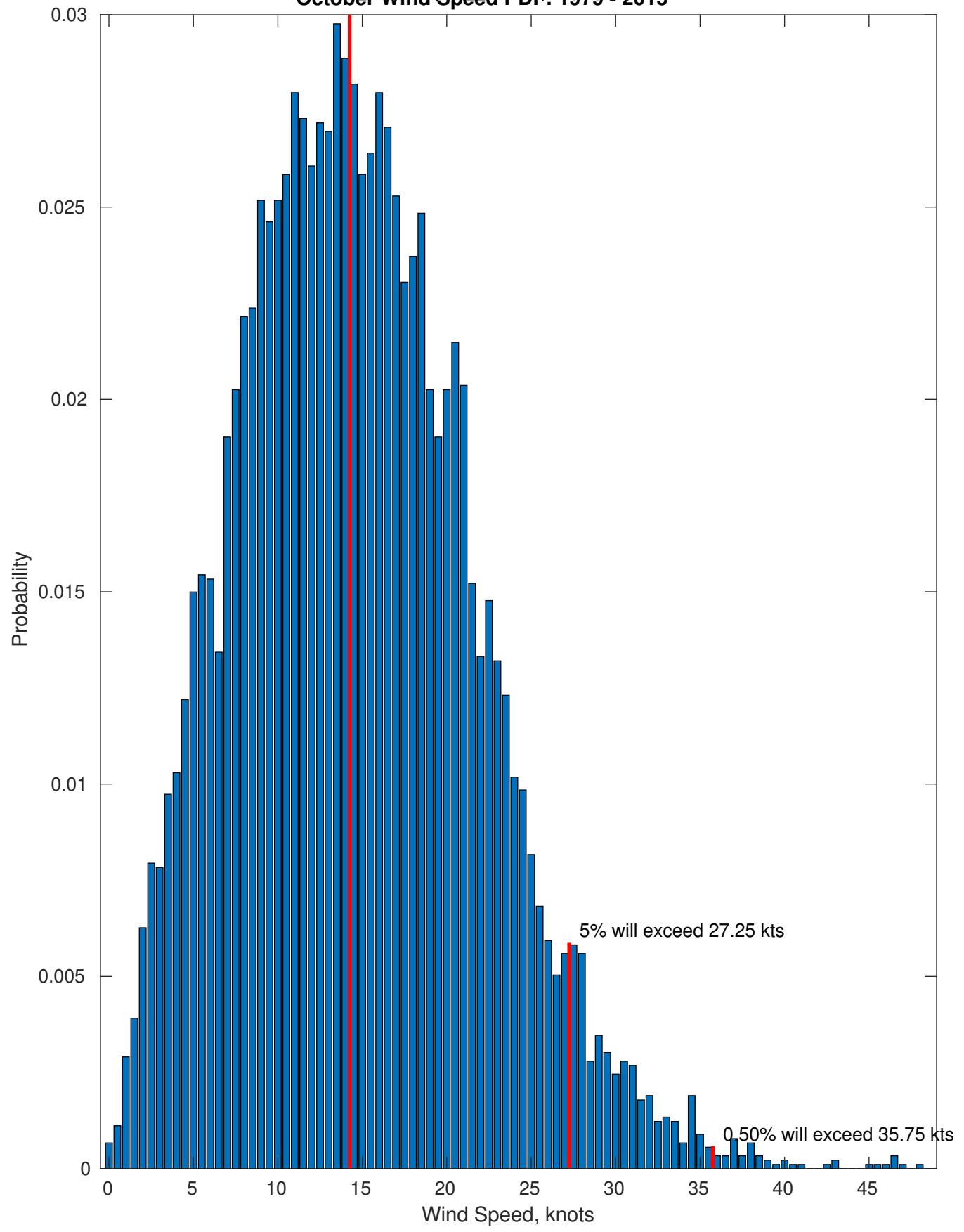
**Wind-Sea: 33.58%**



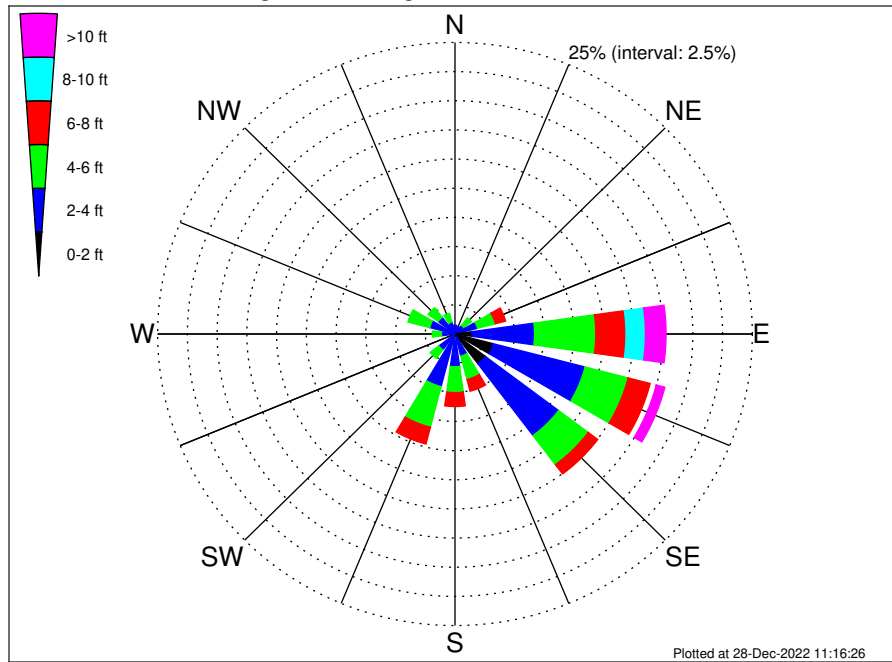
**Swell: 66.42%**



October Wind Speed PDF: 1979-2015  
Most Frequent Wind Speed: 14.25 kts



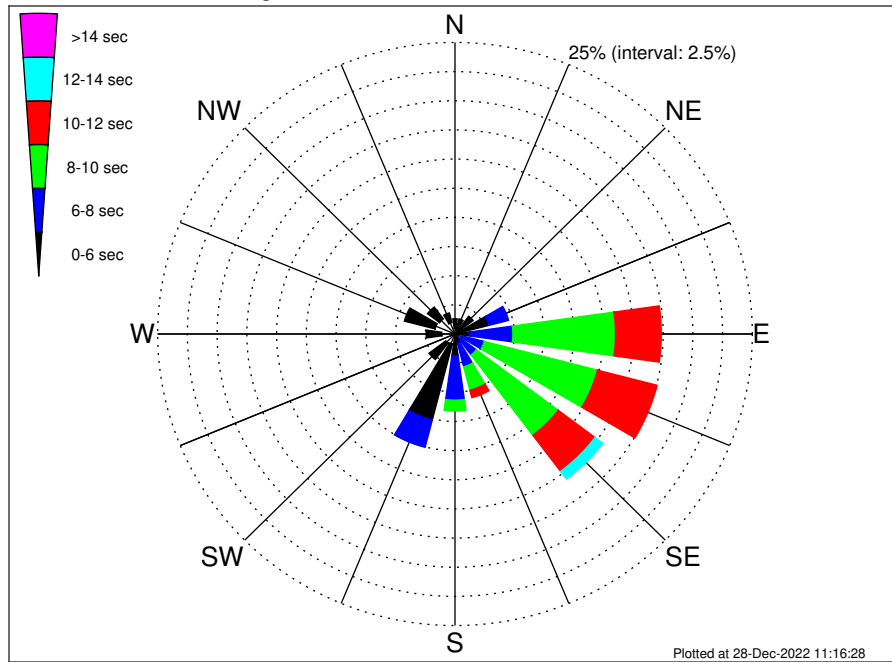
OCS A-0544 Climatological WaveHeight Rose for October: 1979 - 2015



Joint Frequency Distribution Table

	N	NNE	NE	ENE	E	ESE	SE	SSE	S	SSW	SW	WSW	W	WNW	NW	NNW	Total
calm	•	•	0.03	0.01	0.12	0.32	0.30	0.01	•	0.03	•	•	0.03	•	0.01	•	0.88
1 - 2 ft	0.02	0.02	0.07	0.22	1.31	3.00	2.90	0.32	0.55	0.35	0.18	0.11	0.10	0.18	0.15	0.13	9.61
2 - 4 ft	0.74	0.67	0.82	1.72	5.26	7.98	7.71	1.62	2.26	4.29	1.52	0.60	1.01	2.03	1.63	0.93	40.79
4 - 6 ft	0.46	0.55	0.82	1.54	5.15	3.74	3.12	2.07	2.22	3.59	0.92	0.35	0.77	1.88	1.03	0.77	28.97
6 - 8 ft	0.08	0.09	0.19	0.90	2.54	1.91	1.00	1.04	1.20	1.49	0.12	0.10	0.48	0.29	0.08	0.03	11.54
8 - 10 ft	0.01	0.01	0.02	0.59	1.63	0.53	0.38	0.45	0.30	0.26	0.04	0.09	0.03	0.02	•	•	4.38
10 - 12 ft	•	•	•	0.17	1.03	0.37	0.15	0.20	0.09	0.04	0.02	0.03	•	•	•	•	2.10
12 - 14 ft	•	•	•	0.04	0.41	0.20	0.12	0.16	0.06	•	•	•	•	•	•	•	1.00
14 - 16 ft	0.01	•	•	•	0.28	0.13	0.03	0.08	0.02	•	•	•	•	•	•	•	0.56
16 - 18 ft	•	•	•	•	0.01	0.01	0.01	0.02	0.01	•	•	•	•	•	•	•	0.07
> 18 ft	•	•	•	•	•	0.03	0.03	0.03	0.01	•	•	•	•	•	•	•	0.11
Total	1.32	1.34	1.95	5.20	17.75	18.23	15.75	6.01	6.71	10.05	2.81	1.29	2.43	4.40	2.90	1.87	100.00

OCS A-0544 Climatological WavePeriod Rose for October: 1979 - 2015

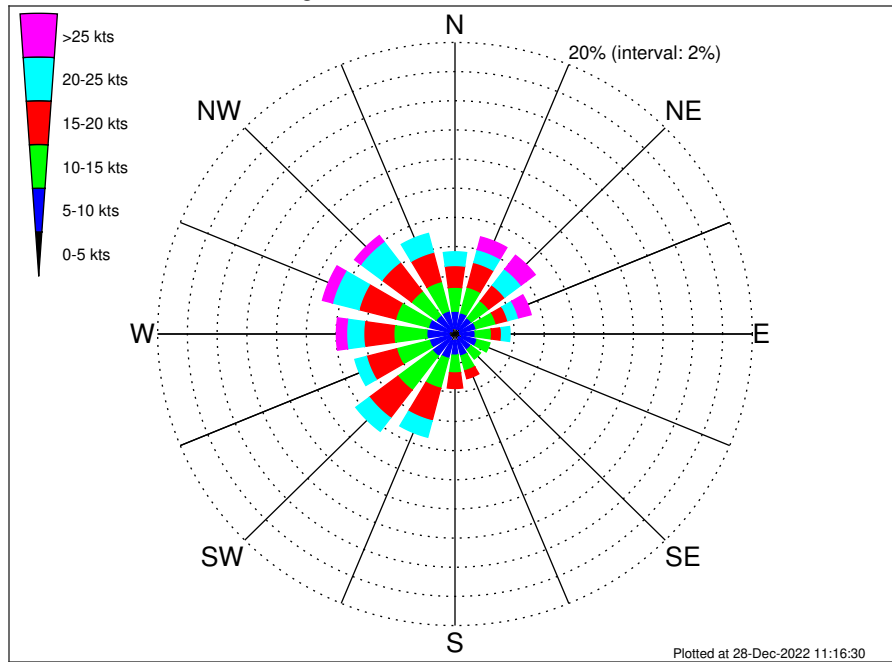


Joint Frequency Distribution Table

	N	NNE	NE	ENE	E	ESE	SE	SSE	S	SSW	SW	WSW	W	WNW	NW	NNW	Total
calm	•	•	•	•	•	•	•	•	•	•	•	•	•	•	•	•	•
1 - 2 sec	•	•	•	•	•	•	•	•	•	•	•	•	•	•	•	•	•
2 - 4 sec	0.48	0.38	0.41	0.23	0.12	0.09	0.06	0.11	0.30	0.87	0.96	0.62	1.12	1.73	1.62	1.02	10.14
4 - 6 sec	0.83	0.96	1.50	2.72	1.11	0.53	0.22	0.68	1.56	6.75	1.78	0.62	1.31	2.66	1.28	0.85	25.34
6 - 8 sec	0.01	•	0.03	1.70	3.64	1.92	1.97	2.10	3.82	2.42	0.07	0.06	•	•	•	•	17.74
8 - 10 sec	•	•	•	0.50	8.63	9.84	8.63	2.08	0.93	0.01	•	•	•	•	•	•	30.61
10 - 12 sec	•	•	•	0.04	3.85	5.18	3.87	0.66	0.08	•	•	•	•	•	•	•	13.68
12 - 14 sec	•	•	•	•	0.40	0.62	0.83	0.36	•	•	•	•	•	•	•	•	2.20
14 - 16 sec	•	•	•	•	•	0.06	0.18	0.01	0.03	•	•	•	•	•	•	•	0.28
18 - 20 sec	•	•	•	•	•	•	•	•	•	•	•	•	•	•	•	•	•
22 - 24 sec	•	•	•	•	•	•	•	•	•	•	•	•	•	•	•	•	•
Total	1.32	1.34	1.95	5.20	17.75	18.23	15.75	6.01	6.71	10.05	2.81	1.29	2.43	4.40	2.90	1.87	100.00



OCS A-0544 Climatological Wind Rose for October: 1979 - 2015



Joint Frequency Distribution Table

	N	NNE	NE	ENE	E	ESE	SE	SSE	S	SSW	SW	WSW	W	WNW	NW	NNW	Total
calm	•	0.01	0.06	0.01	•	0.01	•	0.01	0.03	•	•	0.01	•	•	0.01	0.02	0.18
0 - 5 kts	0.40	0.35	0.37	0.32	0.32	0.46	0.32	0.46	0.40	0.49	0.37	0.36	0.43	0.40	0.27	0.38	6.11
5 - 10 kts	1.16	1.15	0.95	1.13	1.04	1.07	1.02	1.09	1.02	1.24	1.52	1.41	1.48	1.44	1.32	1.23	19.28
10 - 15 kts	1.64	1.81	1.47	1.39	1.10	0.88	0.81	1.05	1.22	2.11	2.92	2.28	2.22	2.28	2.07	2.08	27.34
15 - 20 kts	1.49	1.75	1.34	0.82	0.67	0.35	0.37	0.56	1.06	2.31	2.41	2.09	2.03	2.55	2.48	2.08	24.35
20 - 25 kts	0.94	0.92	1.39	0.75	0.57	0.38	0.11	0.32	0.49	1.16	1.14	0.81	1.15	1.84	1.79	1.33	15.09
25 - 30 kts	0.26	0.60	0.73	0.50	0.17	0.12	0.11	0.10	0.19	0.27	0.20	0.27	0.39	0.53	0.48	0.30	5.23
30 - 35 kts	0.10	0.27	0.31	0.30	0.07	0.02	0.01	0.03	0.06	0.04	0.10	0.07	0.22	0.16	0.03	•	1.80
35 - 40 kts	0.06	0.01	0.10	0.06	0.02	0.02	•	0.03	0.03	•	•	0.04	0.07	0.01	•	•	0.46
40 - 45 kts	•	0.01	0.01	0.01	0.01	0.01	•	•	0.01	•	•	•	•	•	•	0.01	0.08
45 - 50 kts	•	•	0.03	•	0.01	•	0.02	0.01	•	•	•	•	•	•	•	0.01	0.09
Total	6.05	6.88	6.76	5.29	3.98	3.33	2.77	3.67	4.52	7.63	8.66	7.34	7.98	9.21	8.46	7.45	100.00