

## OCS A-0544 - September

Latitude: 40.24 N Longitude: 73.08 W

### Weather Days

Wave Height > 4.0 ft Mean: 11.4 days Range: 7.4 - 15.3 days p50:13.5 days p75:10 days p90:8.5 days

Wave Height > 5.0 ft Mean: 6.7 days Range: 3.0 - 10.3 days p50:7.5 days p75:5.5 days p90:4.5 days

Wave Height > 6.0 ft Mean: 3.9 days Range: 1.0 - 6.8 days p50:4.5 days p75:3 days p90:2 days

Wind Speed > 20.0 knots Mean: 3.6 days Range: 2.2 - 4.9 days p50:4 days p75:2.5 days p90:2 days

Wind Speed > 25.0 knots Mean: 0.9 days Range: 0.3 - 1.6 days p50:1 days p75:0.5 days p90:0.5 days

Wind Speed > 30.0 knots Mean: 0.3 days Range: 0.0 - 0.6 days p50:0.5 days p75:0.5 days p90:0.5 days

### Working Window Probability

Wave Height < 4.0 ft  
3 days or longer: 38%  
5 days or longer: 7%  
7 days or longer: 1%

Wave Height < 5.0 ft  
3 days or longer: 57%  
5 days or longer: 21%  
7 days or longer: 12%

Wave Height < 6.0 ft  
3 days or longer: 74%  
5 days or longer: 36%  
7 days or longer: 25%

### Waves

Mean Height: 2 - 4 ft

The wave heights will occasionally reach 12 - 14 ft, but rarely higher.

Mean Period: 8 - 10 sec

The wave periods will occasionally reach 14 - 16 sec, but rarely longer.

Principle Direction, from: ESE

WindSea/Swell: 20% / 80%

### Winds

Mean Speed: 10 - 15 kts

The winds will occasionally reach 30 - 35 kts, but rarely greater.

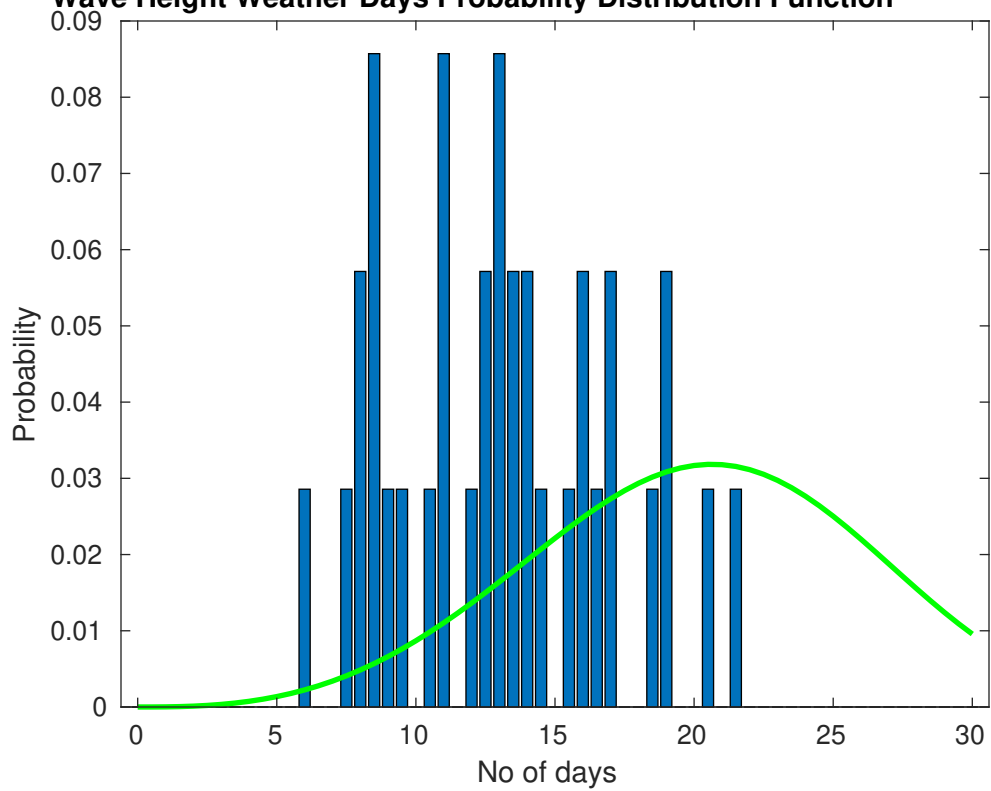
Principle Direction, from: SSW

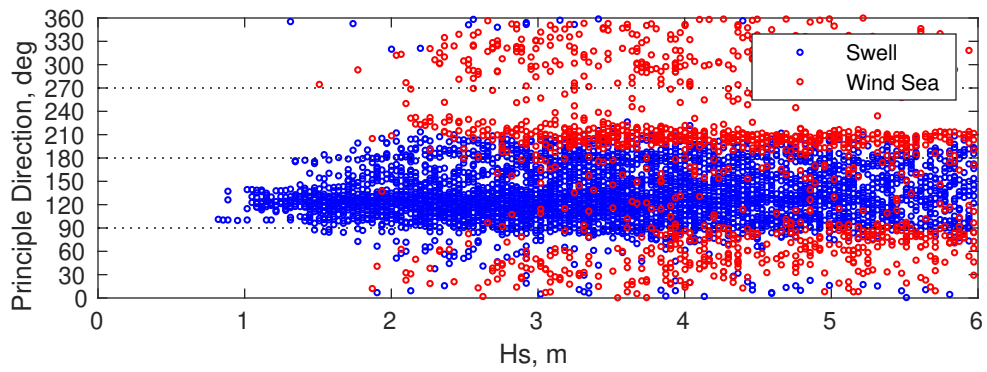
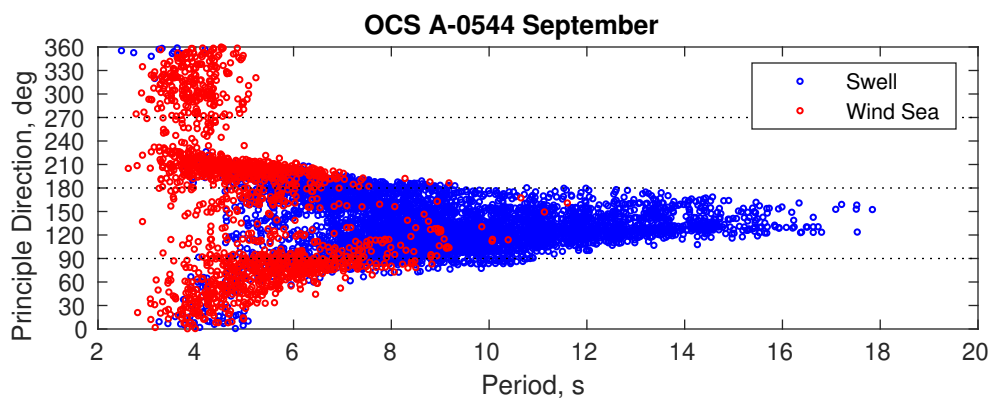
### Severe Storms

There is a 20 % chance of a storm occurring in the month with winds peaking above 34 kts.

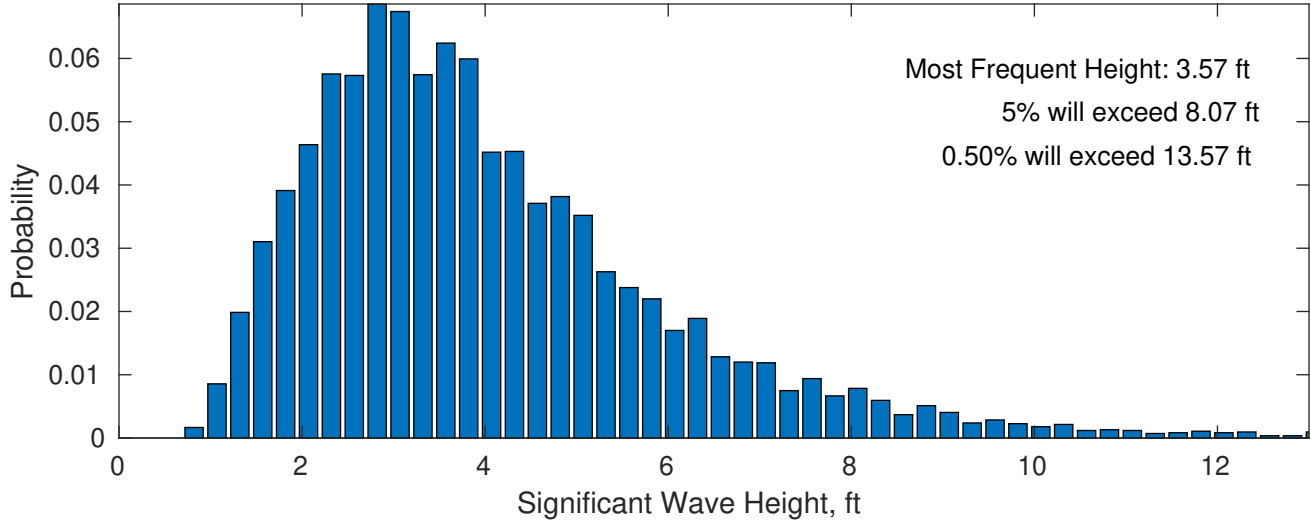
There is a 29 % chance of a storm occurring in the month with waves peaking at 4m (13 ft) or greater.

**Wave Height Weather Days Probability Distribution Function**

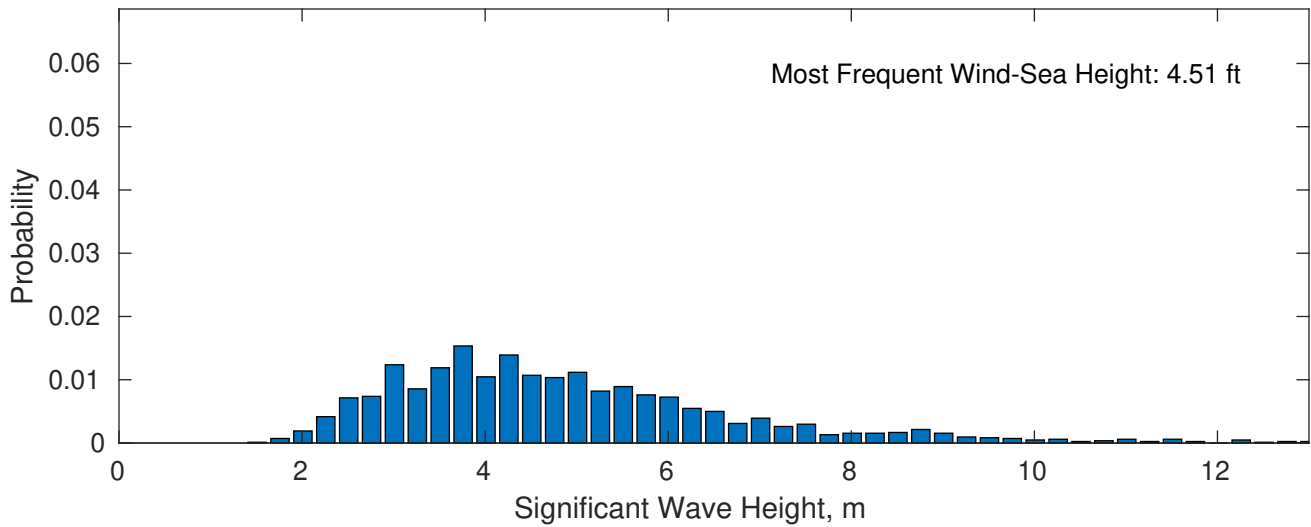




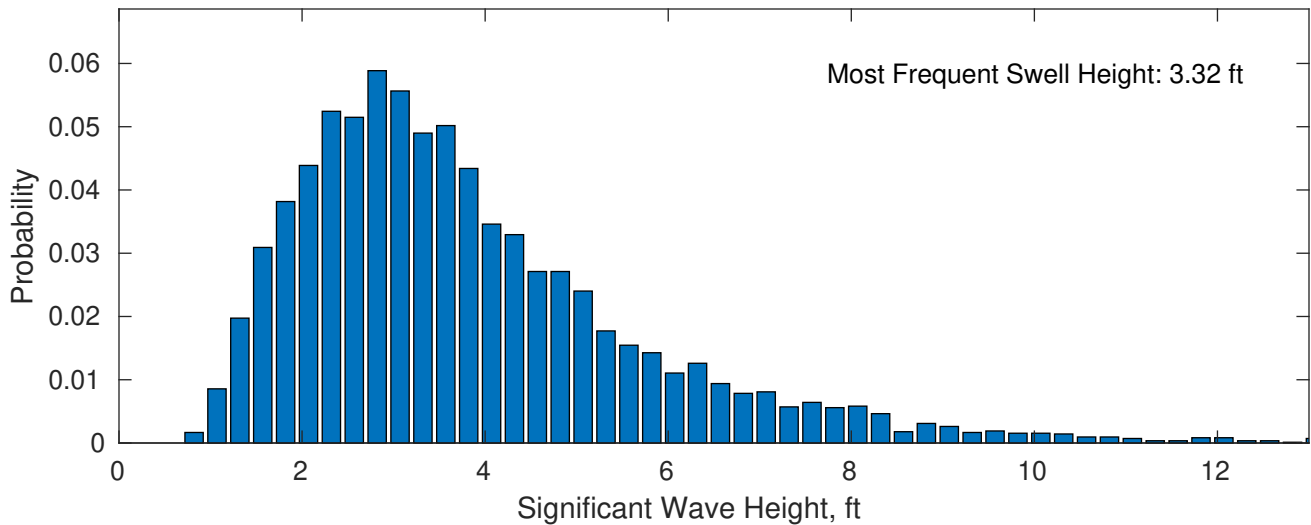
**September Wave Height PDF: 1979 - 2015**



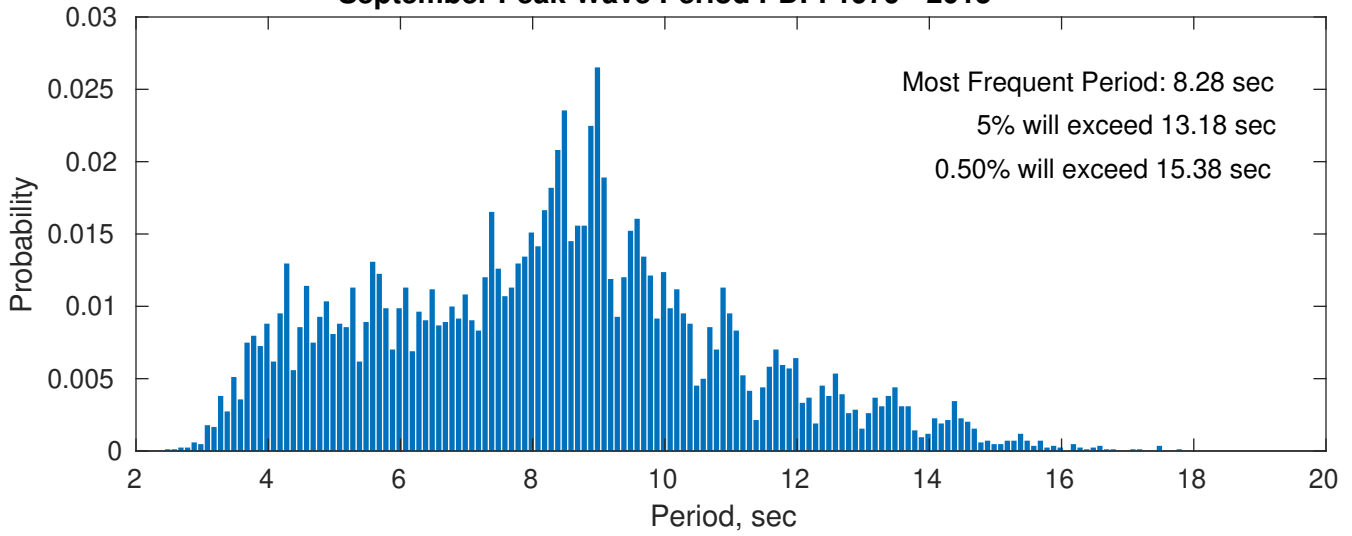
**Wind-Sea: 20.08%**



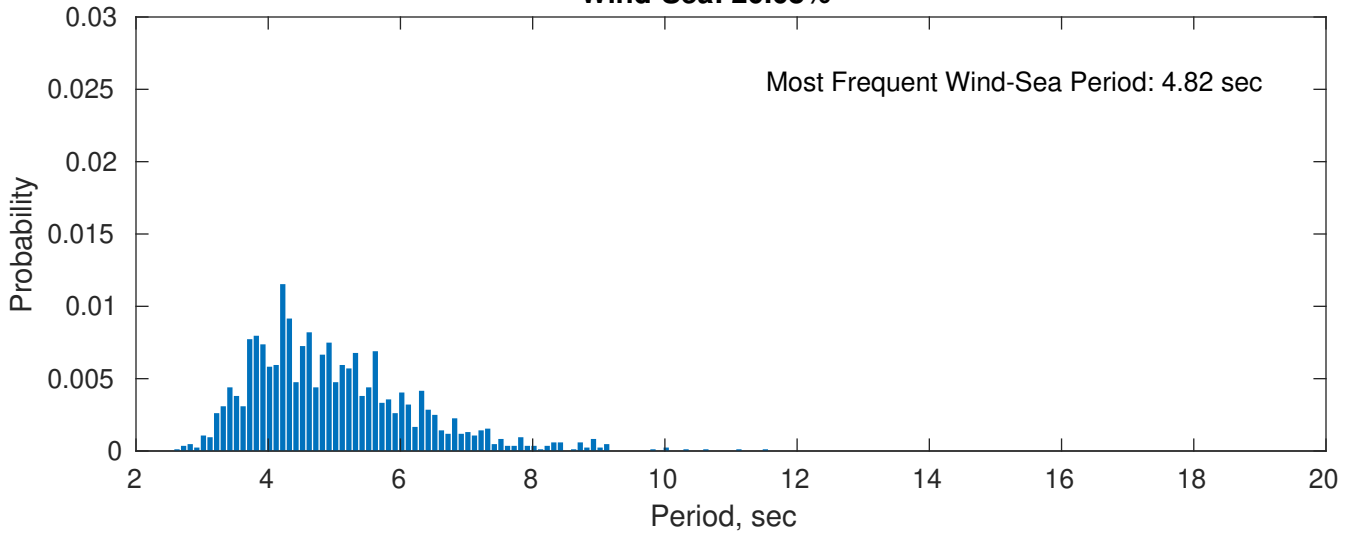
**Swell: 79.92%**



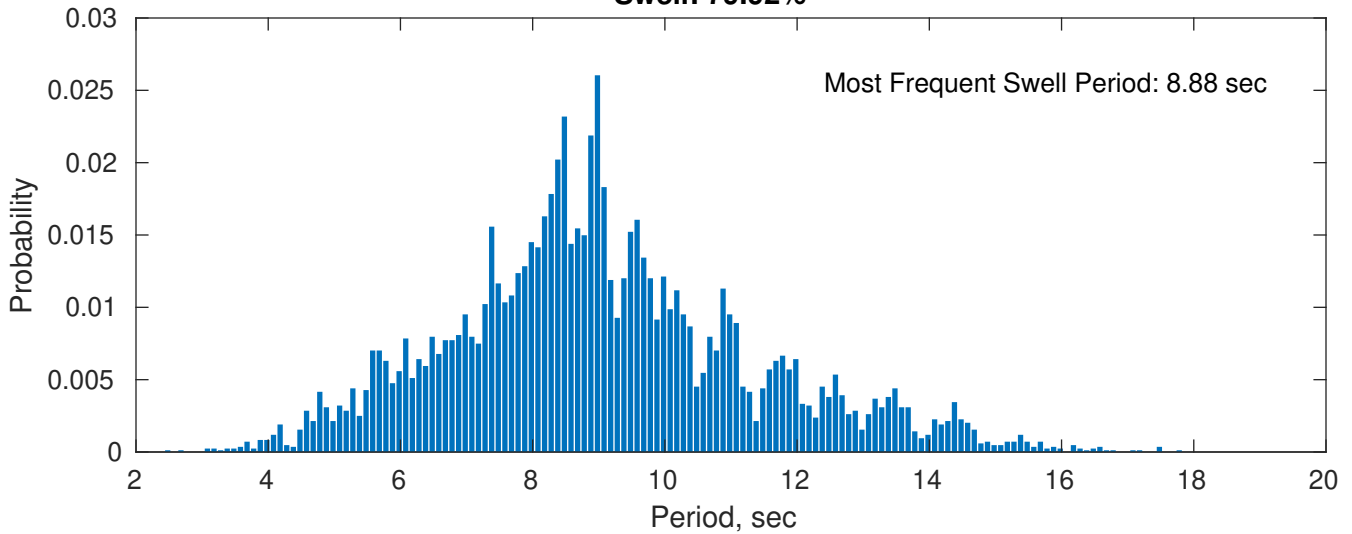
### September Peak Wave Period PDF: 1979 - 2015



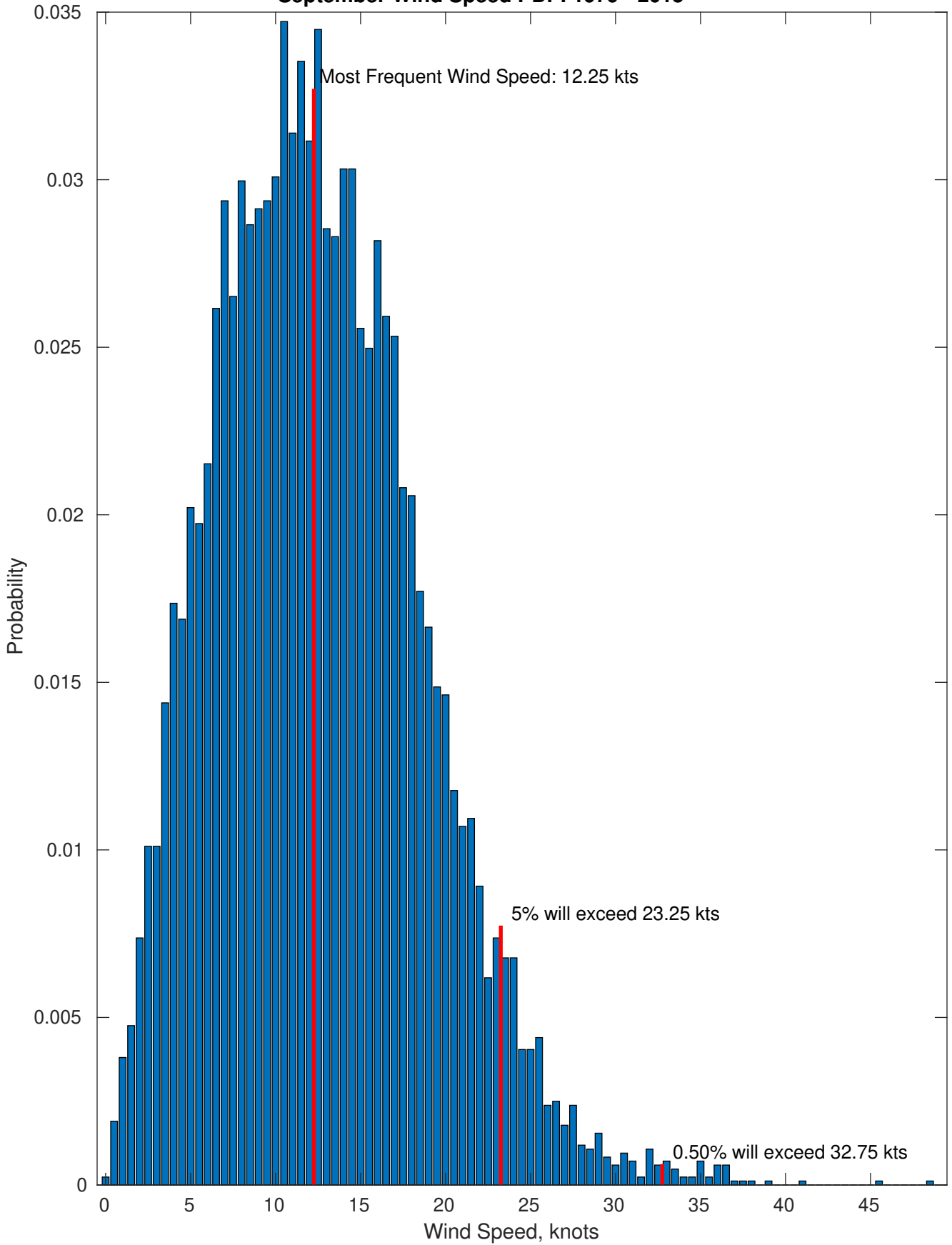
### Wind-Sea: 20.08%



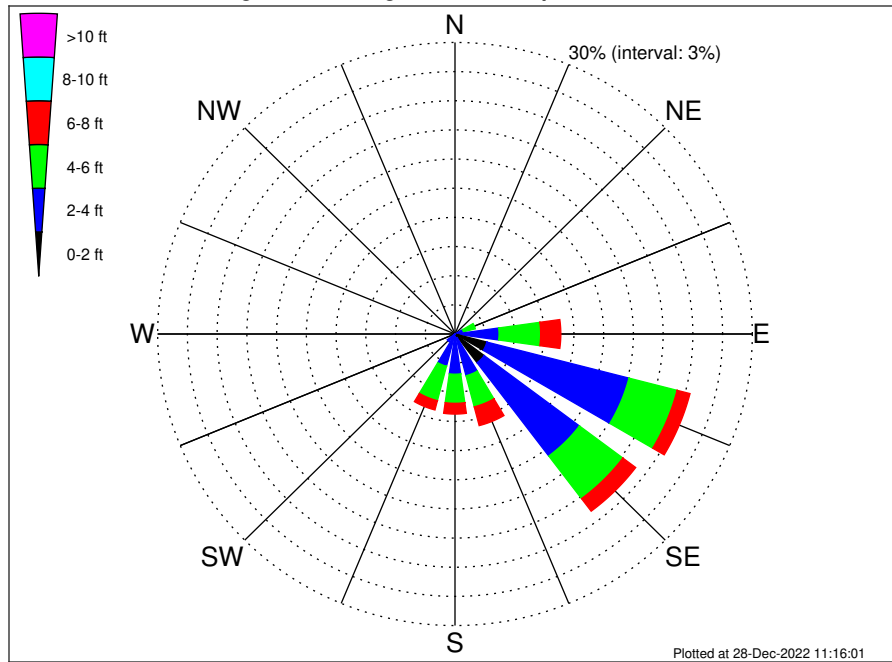
### Swell: 79.92%



September Wind Speed PDF: 1979 - 2015



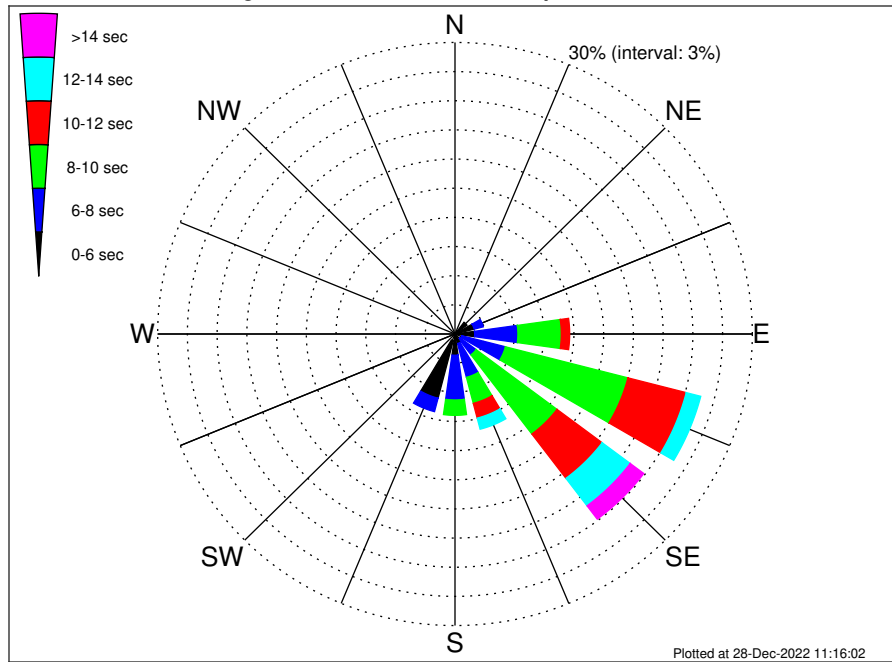
OCS A-0544 Climatological WaveHeight Rose for September: 1979 - 2015



Joint Frequency Distribution Table

	N	NNE	NE	ENE	E	ESE	SE	SSE	S	SSW	SW	WSW	W	WNW	NW	NNW	Total
calm	•	•	•	•	0.05	•	0.02	•	•	•	•	•	•	•	•	•	0.07
1 - 2 ft	0.04	0.01	0.01	0.02	0.48	3.32	3.67	0.44	0.31	0.06	•	•	0.01	0.01	•	•	8.38
2 - 4 ft	0.38	0.50	0.61	0.87	3.92	14.82	12.02	4.00	3.83	3.37	0.99	0.15	0.18	0.57	0.57	0.40	47.17
4 - 6 ft	0.34	0.40	0.73	1.22	4.20	5.02	5.49	3.31	3.00	3.66	0.25	0.07	0.23	0.27	0.23	0.23	28.64
6 - 8 ft	0.06	0.06	0.17	0.70	2.03	1.34	1.62	2.00	1.11	0.99	0.02	•	•	0.07	0.02	0.04	10.23
8 - 10 ft	•	0.01	0.01	0.20	0.63	0.75	0.70	0.62	0.42	0.15	•	•	•	•	•	•	3.50
10 - 12 ft	•	•	0.02	0.04	0.15	0.31	0.18	0.23	0.10	0.02	•	•	•	•	•	•	1.05
12 - 14 ft	•	•	•	0.01	0.12	0.15	0.06	0.08	0.07	0.01	•	•	•	•	•	•	0.51
14 - 16 ft	•	•	•	•	0.01	0.12	0.06	0.06	0.05	•	•	•	•	•	•	•	0.30
16 - 18 ft	•	•	•	•	•	0.01	0.02	0.02	•	•	•	•	•	•	•	•	0.06
> 18 ft	•	•	•	•	•	•	•	0.08	0.01	•	•	•	•	•	•	•	0.10
Total	0.82	0.99	1.55	3.07	11.59	25.84	23.85	10.83	8.88	8.26	1.26	0.23	0.42	0.93	0.82	0.67	100.00

OCS A-0544 Climatological WavePeriod Rose for September: 1979 - 2015

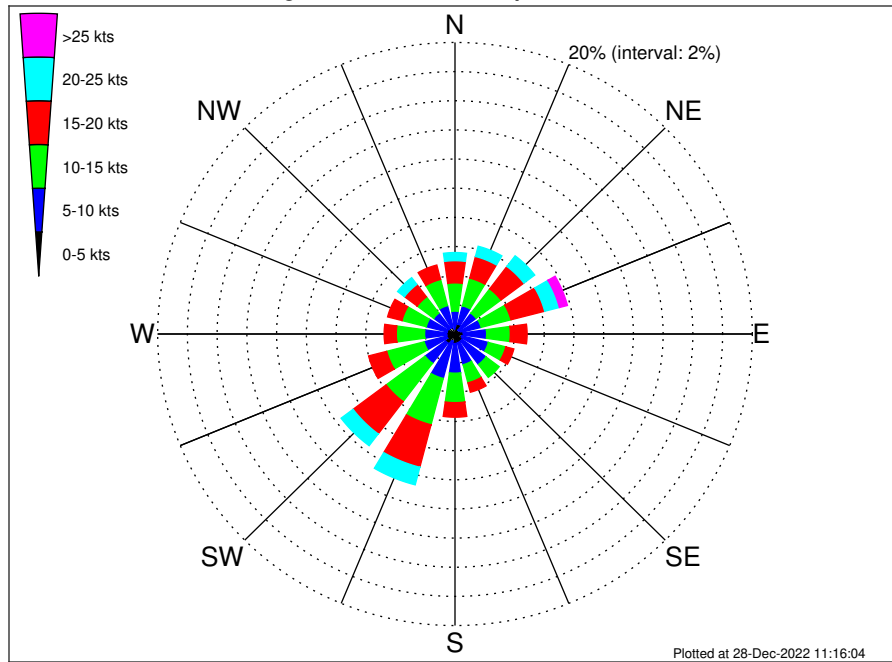


Joint Frequency Distribution Table

	N	NNE	NE	E	ESE	SE	SSE	S	SSW	SW	WSW	W	WNW	NW	NNW	Total	
calm	•	•	•	•	•	•	•	•	•	•	•	•	•	•	•	•	
1 - 2 sec	•	•	•	•	•	•	•	•	•	•	•	•	•	•	•	•	
2 - 4 sec	0.40	0.37	0.27	0.14	0.05	0.06	0.04	0.05	0.19	0.71	0.61	0.13	0.17	0.42	0.59	0.38	4.58
4 - 6 sec	0.42	0.62	1.24	1.85	1.94	0.67	0.59	0.96	2.00	6.11	0.65	0.10	0.25	0.51	0.23	0.29	18.42
6 - 8 sec	•	•	0.04	0.95	4.36	4.53	2.05	3.59	4.60	1.43	•	•	•	•	•	•	21.55
8 - 10 sec	•	•	•	0.12	4.38	12.77	10.21	2.77	1.58	0.01	•	•	•	•	•	•	31.84
10 - 12 sec	•	•	•	•	0.84	6.08	5.71	1.57	0.36	•	•	•	•	•	•	•	14.55
12 - 14 sec	•	•	•	•	0.02	1.51	3.54	1.18	0.15	•	•	•	•	•	•	•	6.41
14 - 16 sec	•	•	•	•	•	0.18	1.59	0.63	•	•	•	•	•	•	•	•	2.40
18 - 20 sec	•	•	•	•	•	0.05	0.12	0.08	•	•	•	•	•	•	•	•	0.25
22 - 24 sec	•	•	•	•	•	•	•	•	•	•	•	•	•	•	•	•	•
Total	0.82	0.99	1.55	3.07	11.59	25.84	23.85	10.83	8.88	8.26	1.26	0.23	0.42	0.93	0.82	0.67	100.00



OCS A-0544 Climatological Wind Rose for September: 1979 - 2015



Joint Frequency Distribution Table

	N	NNE	NE	ENE	E	ESE	SE	SSE	S	SSW	SW	WSW	W	WNW	NW	NNW	Total
calm	•	0.01	0.01	•	0.01	0.01	0.01	0.01	0.01	0.04	0.01	0.02	•	0.02	0.02	0.01	0.21
0 - 5 kts	0.36	0.69	0.32	0.42	0.55	0.46	0.58	0.61	0.64	0.48	0.77	0.55	0.56	0.52	0.50	0.48	8.48
5 - 10 kts	1.21	1.30	1.45	1.40	1.57	1.84	2.02	1.56	2.03	2.64	1.74	1.57	1.49	1.45	1.27	1.52	26.06
10 - 15 kts	1.94	1.96	2.09	2.07	1.59	1.21	1.11	1.28	2.02	3.28	3.28	2.60	1.90	1.69	1.39	1.85	31.28
15 - 20 kts	1.52	1.53	1.93	2.34	1.13	0.56	0.42	0.67	1.00	3.01	2.78	1.26	0.82	1.00	1.07	1.02	22.06
20 - 25 kts	0.56	0.73	0.92	1.02	0.45	0.18	0.13	0.29	0.34	1.25	1.01	0.19	0.29	0.38	0.58	0.50	8.81
25 - 30 kts	0.11	0.18	0.26	0.43	0.11	0.02	0.02	0.05	0.14	0.21	0.13	0.06	0.08	0.13	0.11	0.17	2.21
30 - 35 kts	•	0.10	0.07	0.10	0.06	0.07	0.01	0.04	0.05	0.01	0.01	0.04	•	0.02	0.01	•	0.58
35 - 40 kts	•	•	0.02	0.04	0.08	0.02	0.01	0.01	0.01	0.04	•	•	•	0.02	•	•	0.26
40 - 45 kts	•	0.01	•	•	•	•	•	•	•	•	•	•	•	•	•	•	0.01
45 - 50 kts	•	•	•	•	•	•	0.01	•	•	•	•	0.01	•	•	•	•	0.02
Total	5.70	6.50	7.07	7.81	5.55	4.39	4.33	4.51	6.25	10.95	9.74	6.30	5.14	5.24	4.96	5.55	100.00