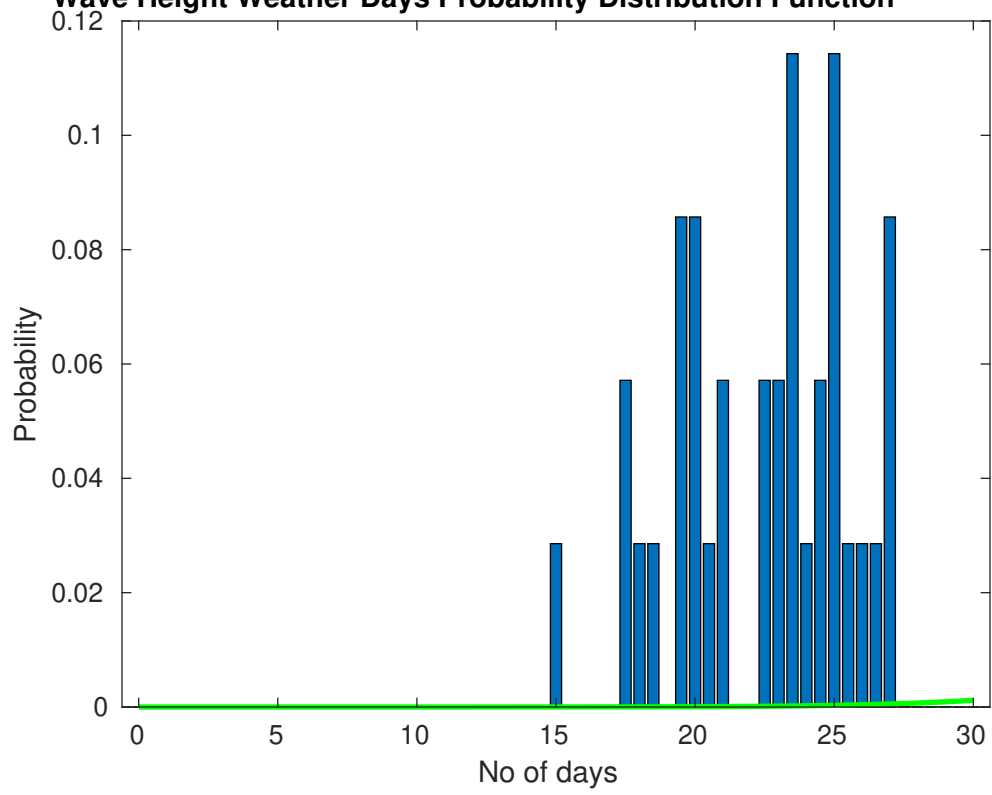
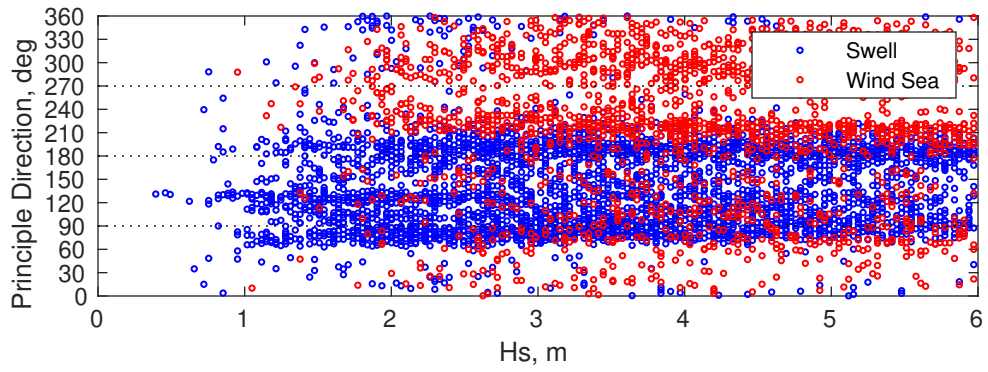
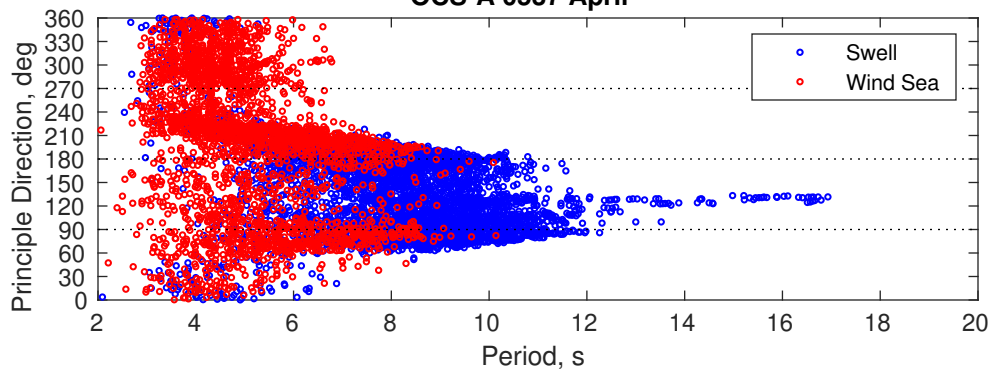


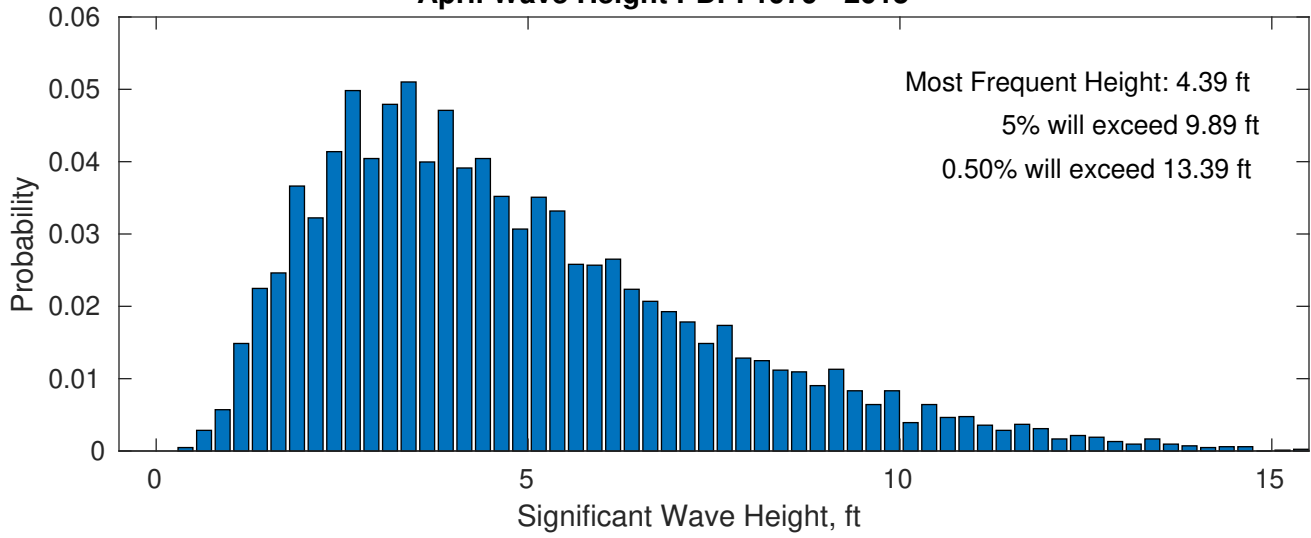
Wave Height Weather Days Probability Distribution Function



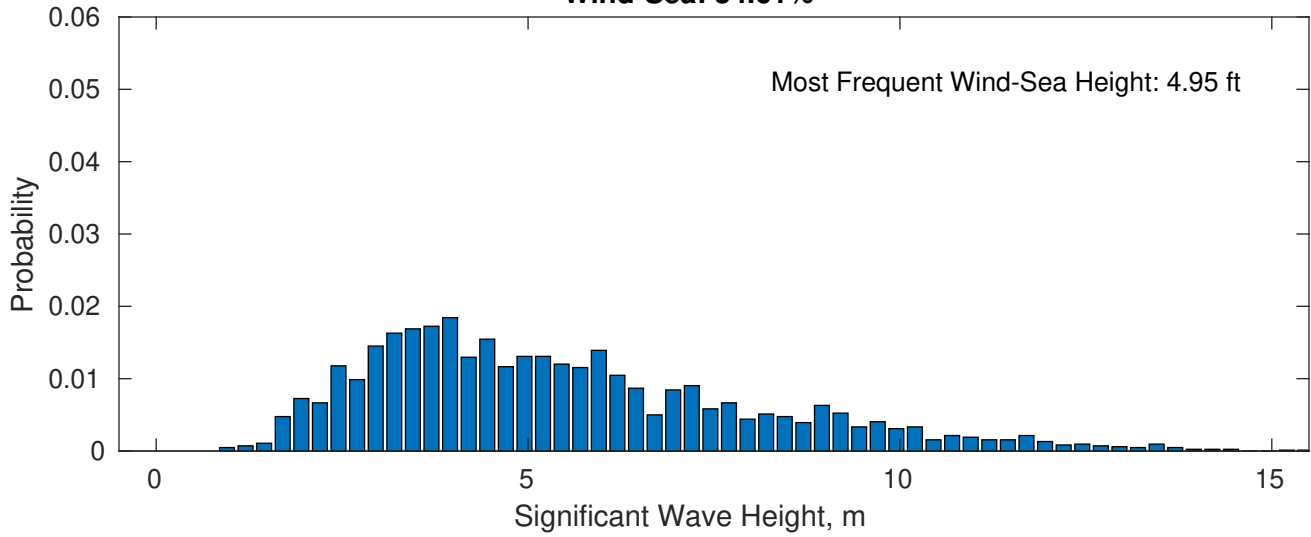
OCS-A 0537 April



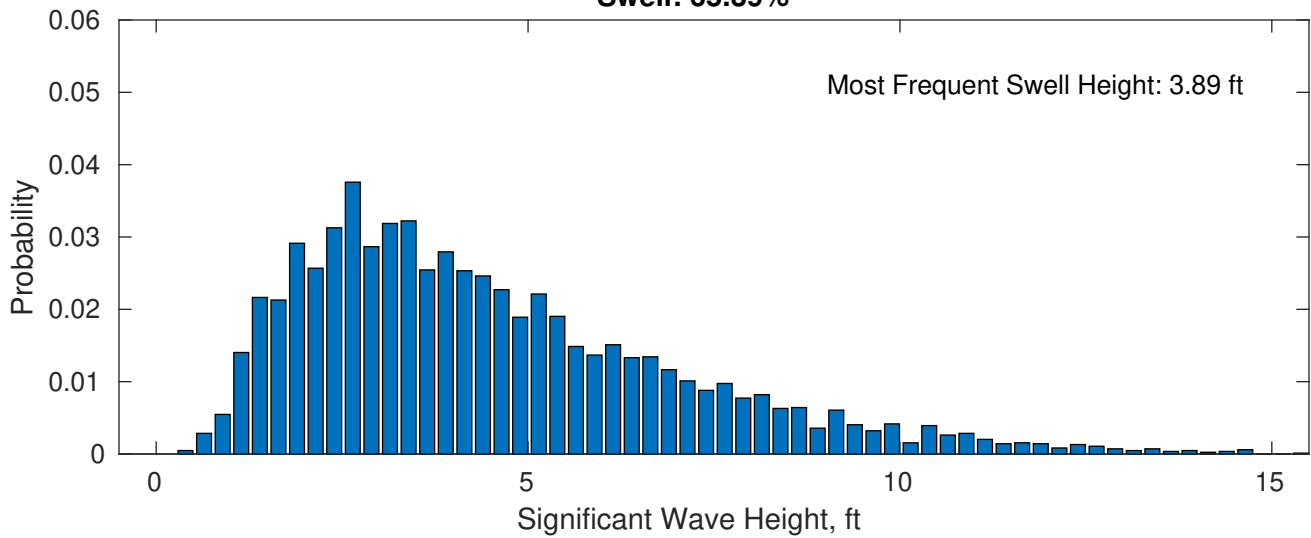
April Wave Height PDF: 1979 - 2015



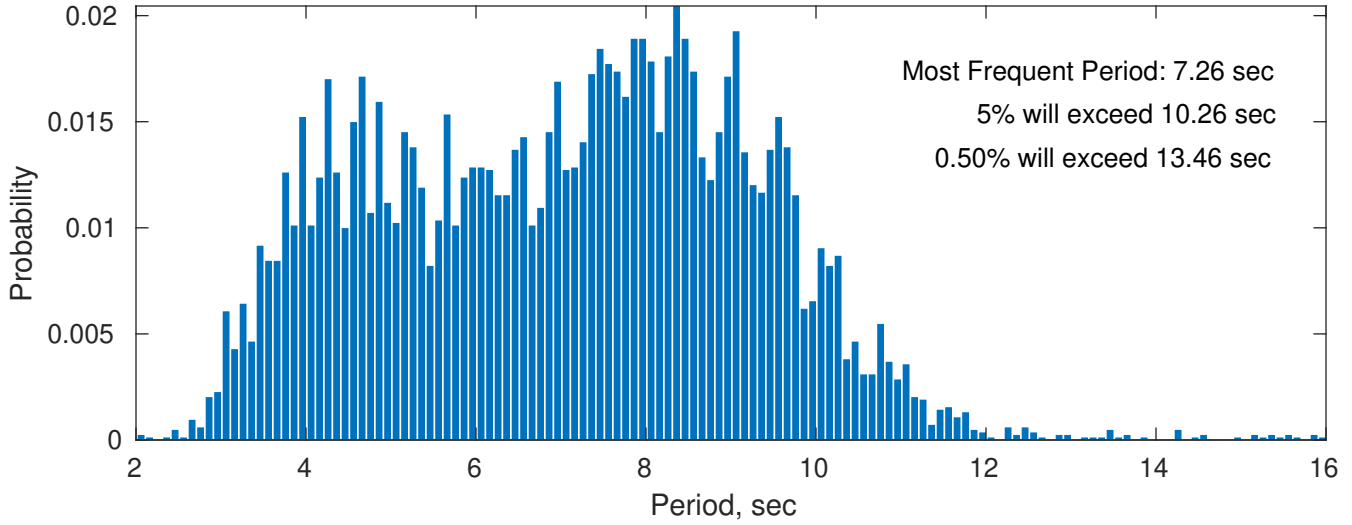
Wind-Sea: 34.61%



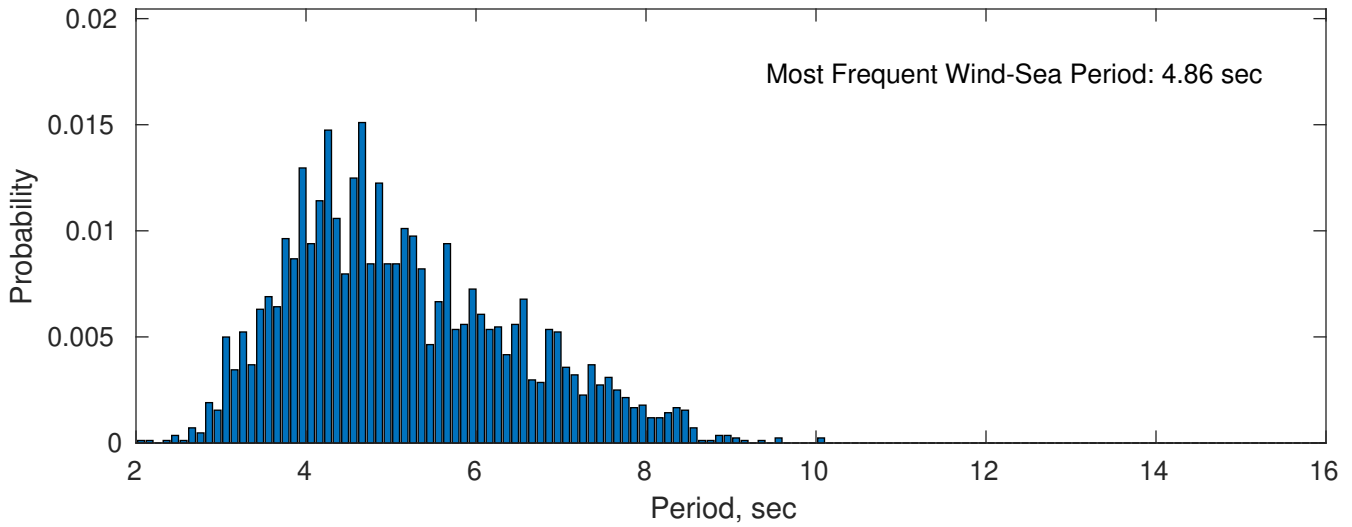
Swell: 65.39%



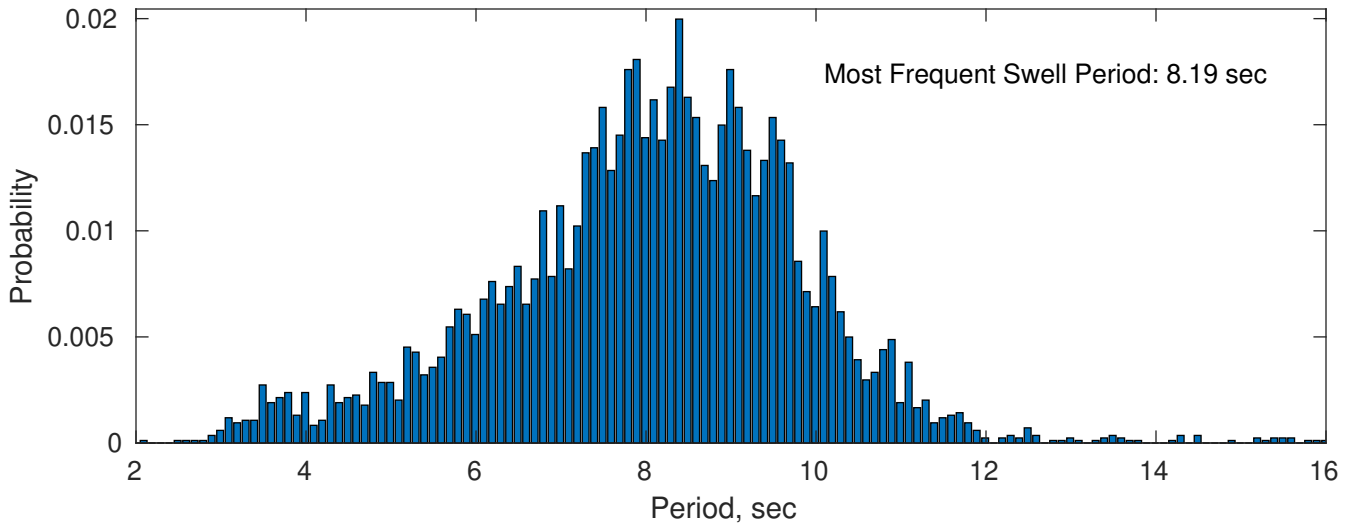
April Peak Wave Period PDF: 1979 - 2015



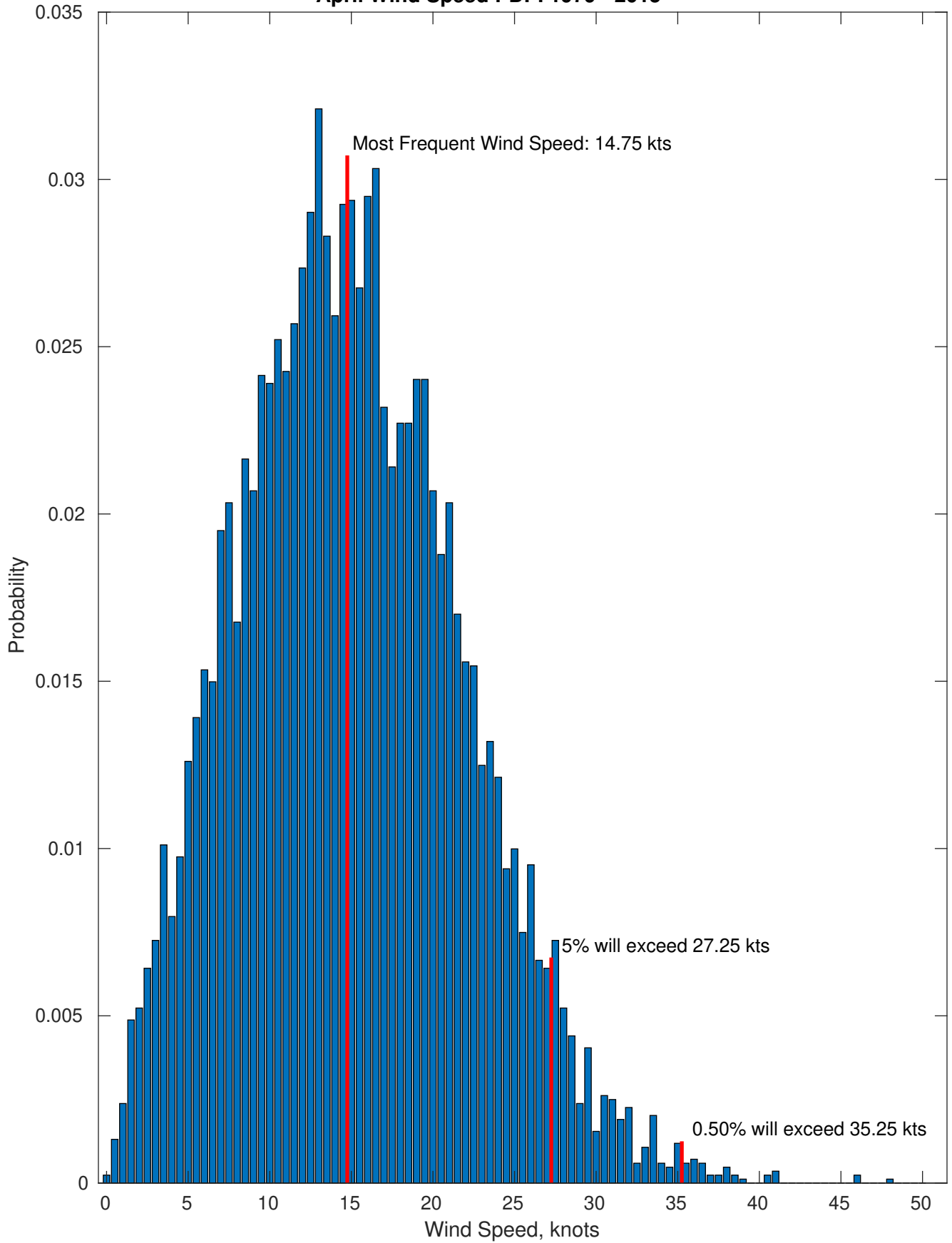
Wind-Sea: 34.61%



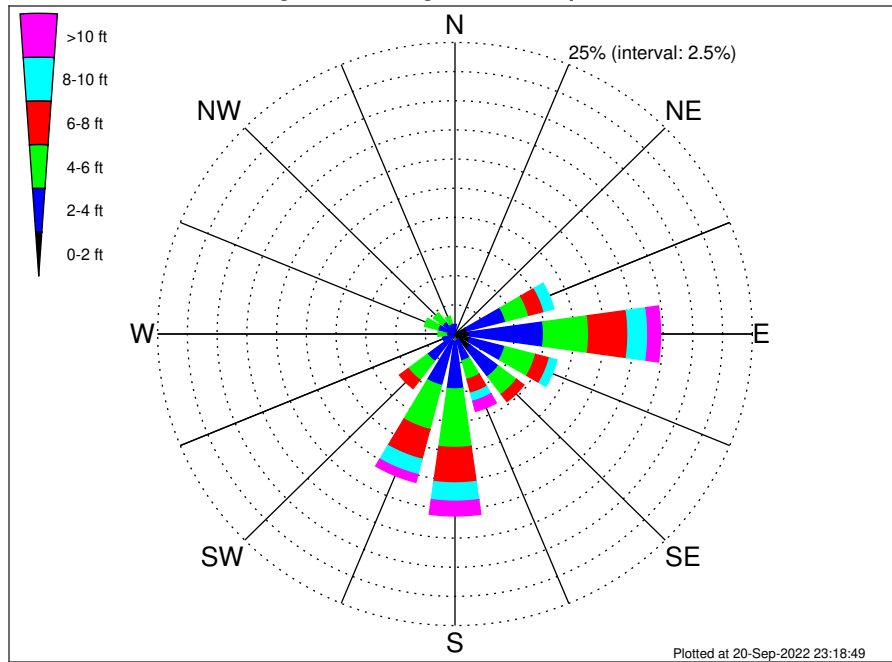
Swell: 65.39%



April Wind Speed PDF: 1979 - 2015



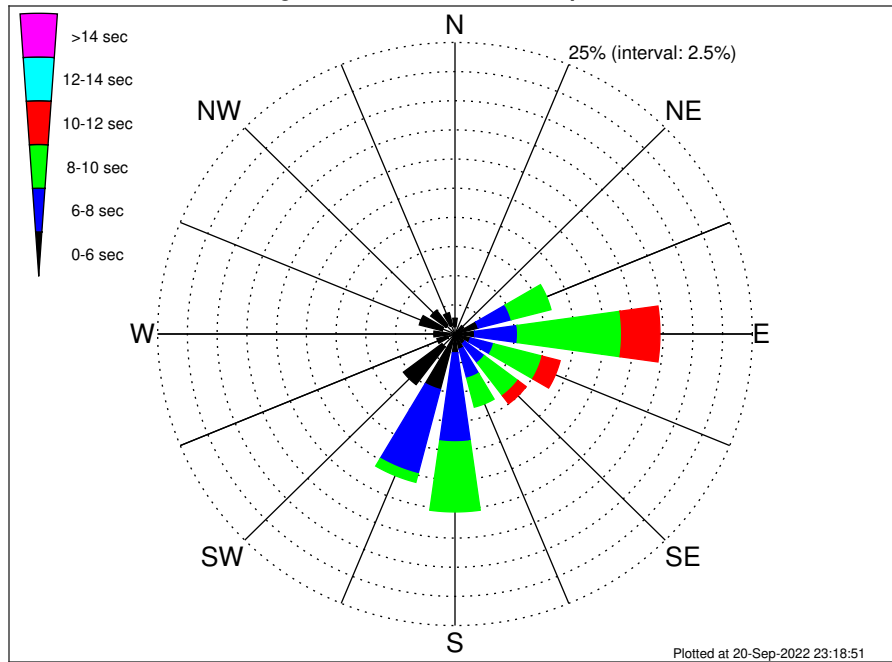
OCS-A 0537 Climatological WaveHeight Rose for April: 1979 - 2015



Joint Frequency Distribution Table

	N	NNE	NE	ENE	E	ESE	SE	SSE	S	SSW	SW	WSW	W	WNW	NW	NNW	Total
calm	0.01	0.01	0.04	0.02	0.02	0.04	0.24	•	0.04	0.01	0.01	0.02	•	0.02	•	•	0.49
1 - 2 ft	0.11	0.07	0.11	1.00	1.22	1.28	1.38	0.52	0.62	0.61	0.29	0.15	0.19	0.17	0.12	0.12	7.96
2 - 4 ft	0.71	0.55	0.38	3.38	6.20	3.01	2.95	1.84	4.06	3.94	2.60	0.92	0.56	1.32	1.20	0.82	34.43
4 - 6 ft	0.40	0.24	0.26	2.00	3.79	2.68	1.90	1.64	5.02	3.90	2.02	0.37	0.69	1.14	0.95	0.64	27.65
6 - 8 ft	0.11	0.15	0.13	1.33	3.31	1.20	0.78	1.22	3.04	2.64	0.93	0.10	0.30	0.39	0.25	0.24	16.13
8 - 10 ft	0.01	0.06	0.07	0.86	1.66	0.65	0.58	0.71	1.57	1.36	0.19	0.06	0.11	0.08	0.04	0.08	8.10
10 - 12 ft	0.02	0.02	0.04	0.26	0.67	0.38	0.14	0.51	0.84	0.52	0.01	0.01	0.02	0.01	0.08	0.01	3.57
12 - 14 ft	0.01	•	0.01	0.07	0.38	0.07	0.07	0.25	0.30	0.12	•	•	•	•	0.01	•	1.30
14 - 16 ft	•	•	0.02	•	0.02	0.01	0.01	0.10	0.06	0.04	•	•	•	•	•	•	0.26
16 - 18 ft	•	•	0.01	•	•	•	•	0.04	0.05	0.01	•	•	•	•	•	•	0.11
> 18 ft	•	•	•	•	•	•	•	0.01	0.01	•	•	•	•	•	•	•	0.02
Total	1.39	1.11	1.07	8.92	17.28	9.32	8.06	6.85	15.60	13.14	6.05	1.63	1.87	3.14	2.65	1.91	100.00

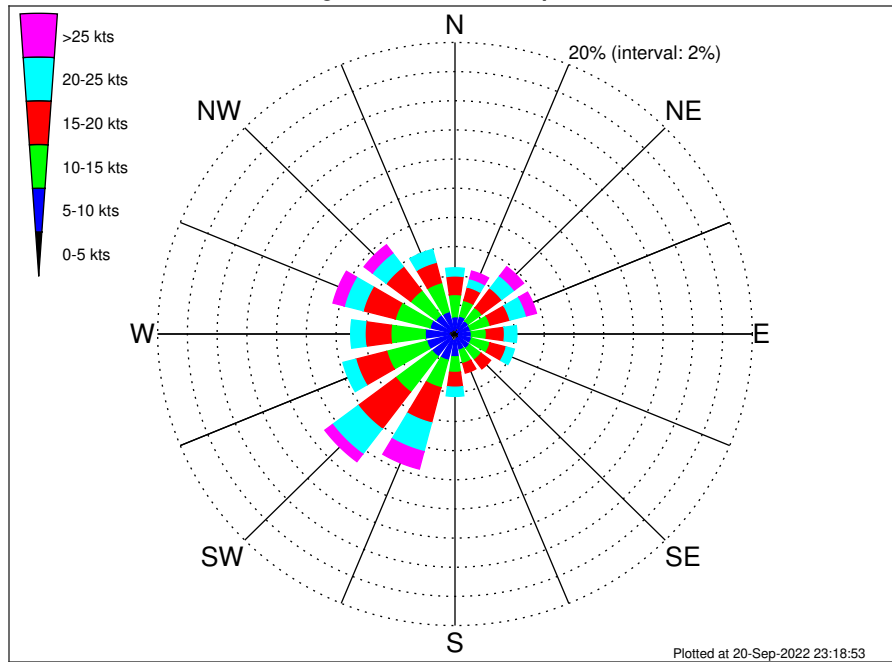
OCS-A 0537 Climatological WavePeriod Rose for April: 1979 - 2015



Joint Frequency Distribution Table

	N	NNE	NE	ENE	E	ESE	SE	SSE	S	SSW	SW	WSW	W	WNW	NW	NNW	Total
calm
1 - 2 sec
2 - 4 sec	0.63	0.45	0.27	0.32	0.17	0.23	0.21	0.32	0.20	0.23	1.37	0.65	0.49	1.11	0.96	0.77	8.38
4 - 6 sec	0.73	0.58	0.63	1.70	1.49	1.12	0.82	1.02	1.42	4.70	4.07	0.92	1.30	2.00	1.59	1.12	25.19
6 - 8 sec	0.04	0.07	0.13	2.87	3.62	2.01	2.06	2.57	7.63	7.46	0.62	0.06	0.08	0.04	0.10	0.02	29.36
8 - 10 sec	.	.	0.04	3.45	8.74	4.22	3.53	2.57	6.01	0.76	29.31
10 - 12 sec	.	.	.	0.58	3.22	1.56	0.87	0.37	0.34	6.94
12 - 14 sec	0.05	0.17	0.18	0.39
14 - 16 sec	0.02	0.20	0.23
18 - 20 sec	0.19	0.19
22 - 24 sec
Total	1.39	1.11	1.07	8.92	17.28	9.32	8.06	6.85	15.60	13.14	6.05	1.63	1.87	3.14	2.65	1.91	100.00

OCS-A 0537 Climatological Wind Rose for April: 1979 - 2015



Joint Frequency Distribution Table

	N	NNE	NE	ENE	E	ESE	SE	SSE	S	SSW	SW	WSW	W	WNW	NW	NNW	Total
calm	•	0.01	•	0.02	•	•	0.01	0.01	0.02	0.01	0.04	•	0.01	•	0.01	•	0.15
0 - 5 kts	0.29	0.43	0.19	0.32	0.27	0.29	0.36	0.31	0.40	0.45	0.34	0.33	0.42	0.39	0.29	0.32	5.40
5 - 10 kts	0.90	0.83	0.93	0.73	0.83	0.87	0.84	0.82	1.14	1.40	1.55	1.63	1.58	1.36	1.32	1.26	17.99
10 - 15 kts	1.52	1.11	1.14	1.37	1.01	1.28	0.99	0.95	1.07	1.94	3.06	2.78	2.31	2.40	2.12	2.06	27.10
15 - 20 kts	1.27	0.95	1.68	1.38	1.21	1.13	0.80	0.68	1.01	2.50	3.18	2.15	1.74	2.24	2.06	1.44	25.40
20 - 25 kts	0.56	0.59	1.06	1.15	0.83	0.56	0.32	0.36	0.63	2.03	2.16	0.89	0.96	1.31	1.17	0.92	15.51
25 - 30 kts	0.23	0.42	0.51	0.54	0.29	0.29	0.19	0.25	0.26	1.02	0.58	0.17	0.23	0.62	0.46	0.30	6.34
30 - 35 kts	0.11	0.08	0.24	0.11	0.06	0.05	0.11	0.07	0.05	0.17	0.06	•	0.11	0.15	0.10	0.11	1.56
35 - 40 kts	0.05	•	0.04	0.05	0.02	•	0.04	0.02	0.01	0.05	•	0.01	0.01	0.01	0.12	0.01	0.44
40 - 45 kts	0.01	0.01	•	•	•	•	•	•	•	•	•	•	•	•	0.02	0.01	0.06
45 - 50 kts	0.01	0.02	•	•	•	•	•	•	•	•	•	•	•	•	•	0.01	0.05
Total	4.95	4.46	5.78	5.66	4.53	4.46	3.65	3.47	4.60	9.57	10.96	7.97	7.36	8.48	7.66	6.43	100.00