

OCS-A 0537 - August

Latitude: 39.96 N Longitude: 72.73 W

Weather Days

Wave Height > 3.0 ft Mean: 18.1 days Range: 14.4 - 21.7 days p50:18 days p75:16 days p90:14 days

Wave Height > 4.0 ft Mean: 10.1 days Range: 6.8 - 13.3 days p50:10.5 days p75:8 days p90:7 days

Wave Height > 5.0 ft Mean: 5.4 days Range: 2.7 - 8.1 days p50:6 days p75:4 days p90:2.5 days

Wind Speed > 20.0 knots Mean: 2.2 days Range: 0.9 - 3.6 days p50:2.5 days p75:1.5 days p90:0.5 days

Wind Speed > 25.0 knots Mean: 0.5 days Range: 0.0 - 1.2 days p50:0.5 days p75:0.5 days p90:0.5 days

Wind Speed > 30.0 knots Mean: 0.1 days Range: 0.0 - 0.4 days p50:0.5 days p75:0.5 days p90:0.5 days

Working Window Probability

Wave Height < 3.0 ft 3 days or longer: 26%

5 days or longer: 2%

7 days or longer: 1%

Wave Height < 4.0 ft 3 days or longer: 46%

5 days or longer: 14%

7 days or longer: 5%

Wave Height < 5.0 ft 3 days or longer: 61%

5 days or longer: 32%

7 days or longer: 20%

Waves

Mean Height: 2 - 4 ft

The wave heights will occasionally reach 10 - 12 ft, but rarely higher.

Mean Period: 6 - 8 sec

The wave periods will occasionally reach 14 - 16 sec, but rarely longer.

Principle Direction, from: SE

WindSea/Swell: 19% / 81%

Winds

Mean Speed: 10 - 15 kts

The winds will occasionally reach 25 - 30 kts, but rarely greater.

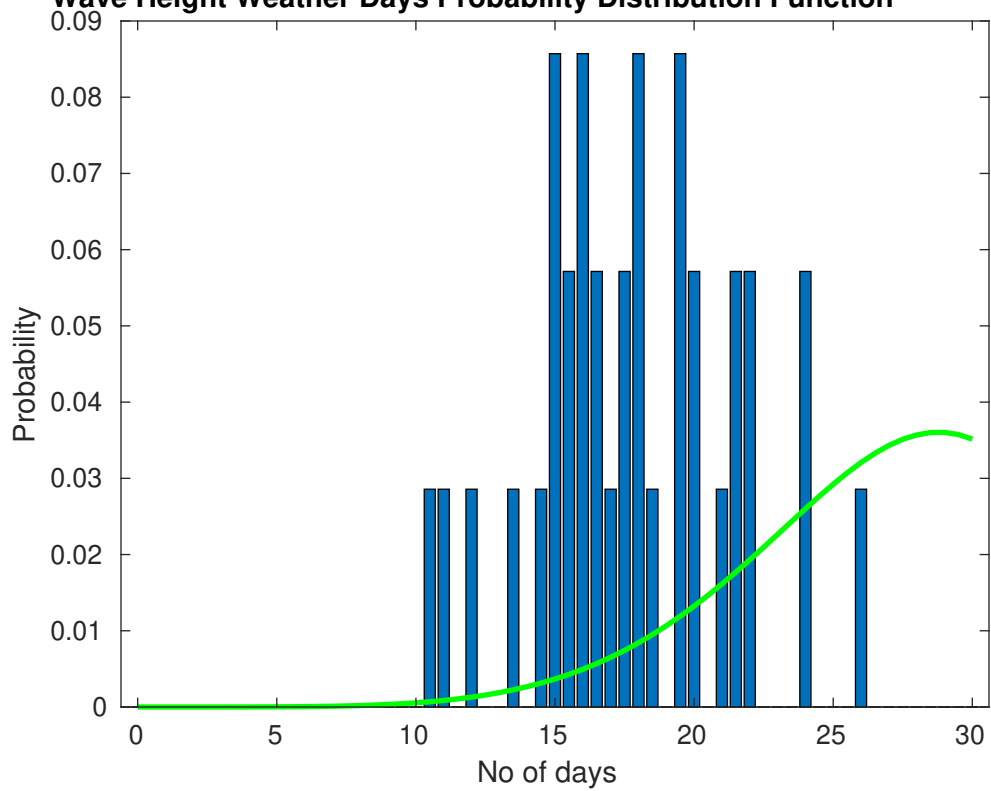
Principle Direction, from: SW

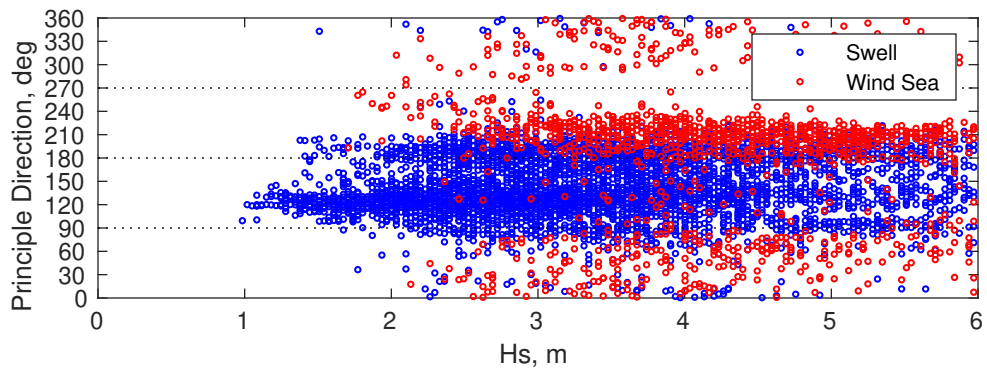
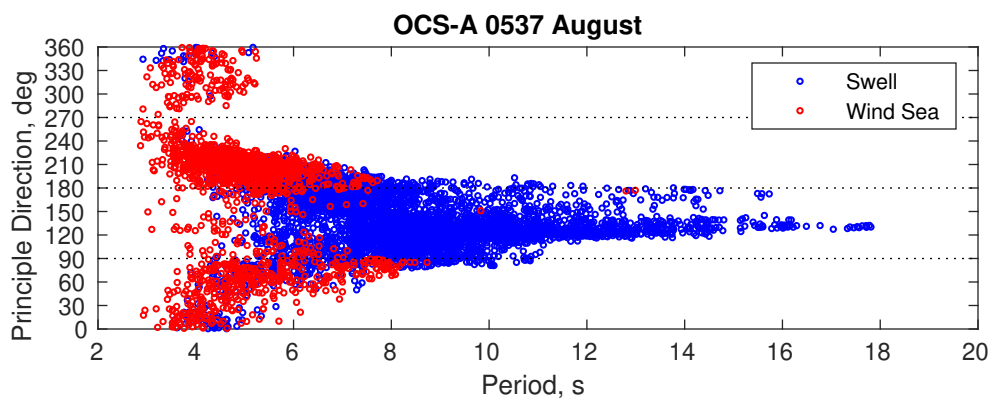
Severe Storms

There is a 3 % chance of a storm occurring in the month with winds peaking above 34 kts.

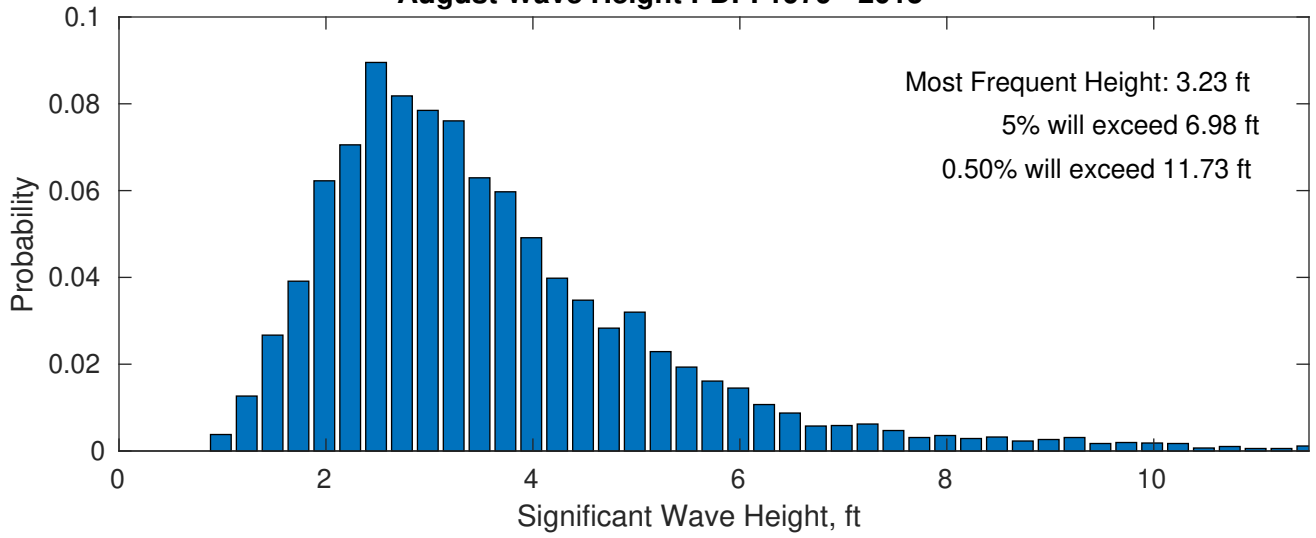
There is a 14 % chance of a storm occurring in the month with waves peaking at 4m (13 ft) or greater.

Wave Height Weather Days Probability Distribution Function

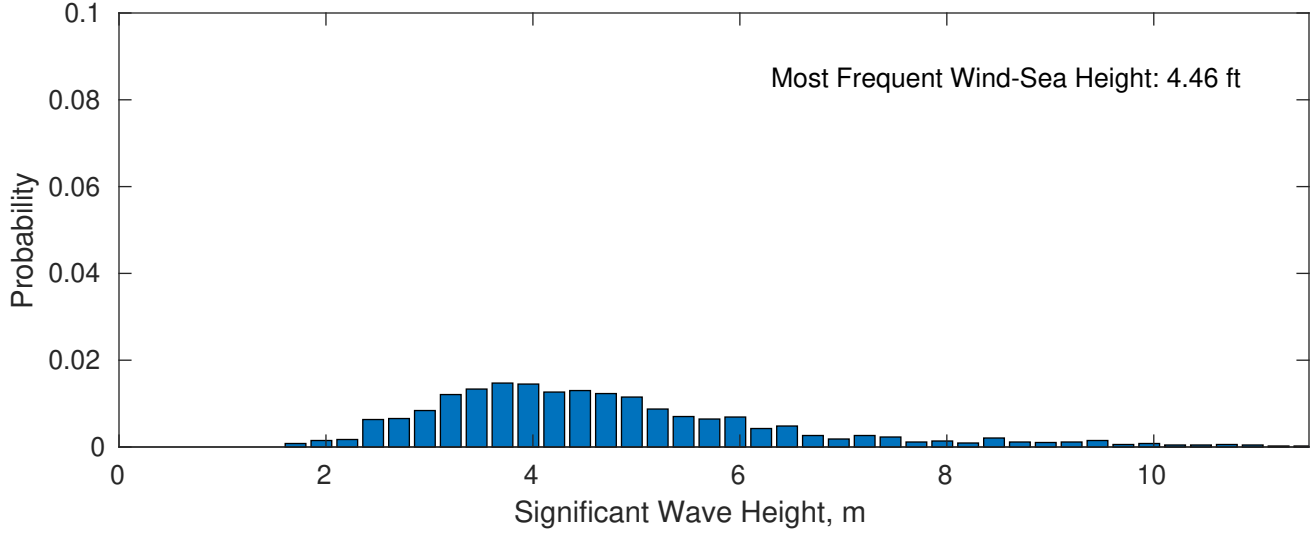




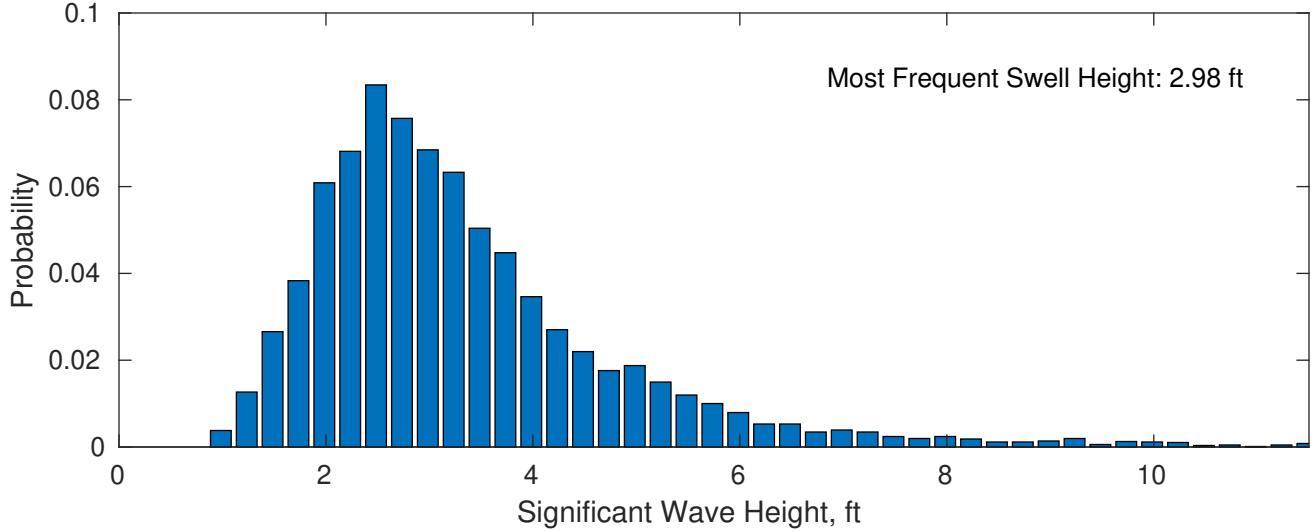
August Wave Height PDF: 1979 - 2015



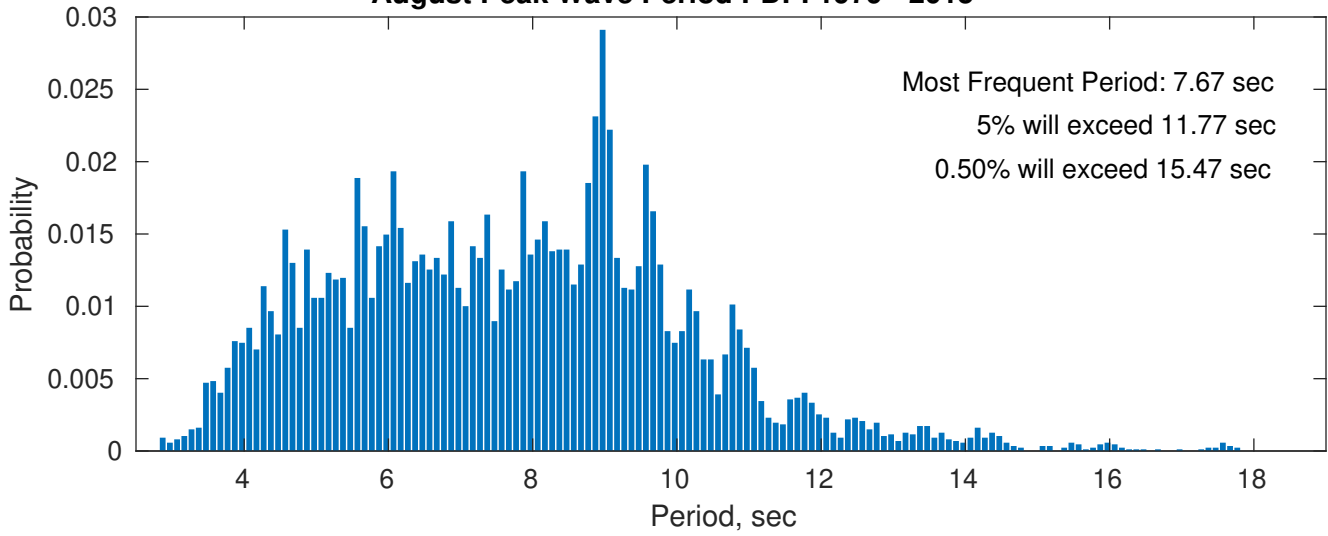
Wind-Sea: 19.22%



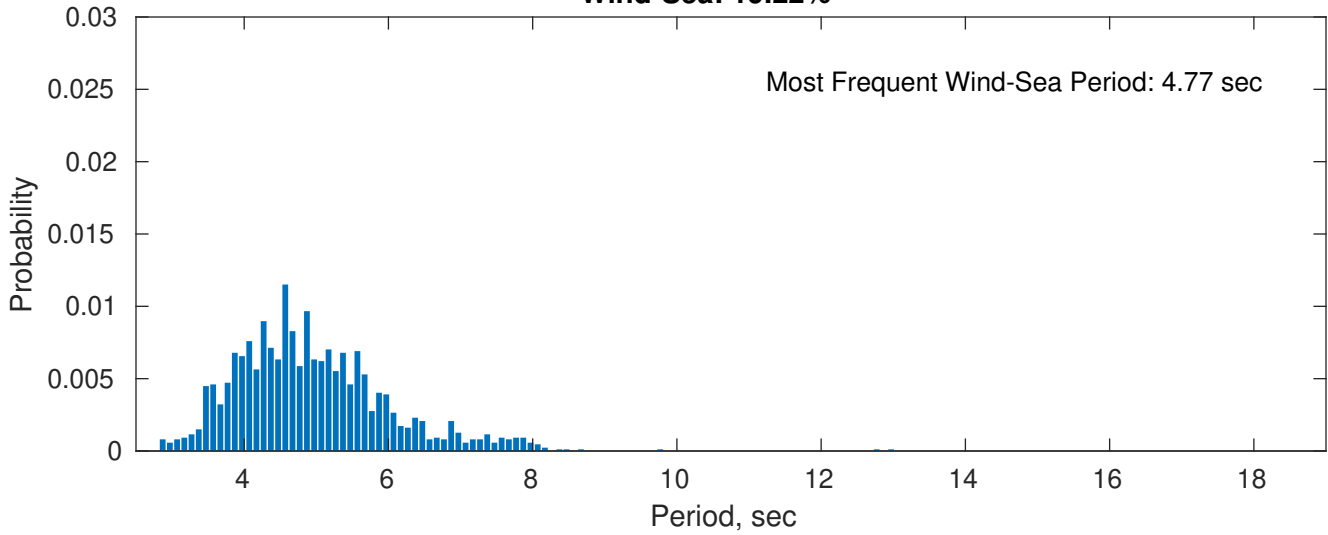
Swell: 80.78%



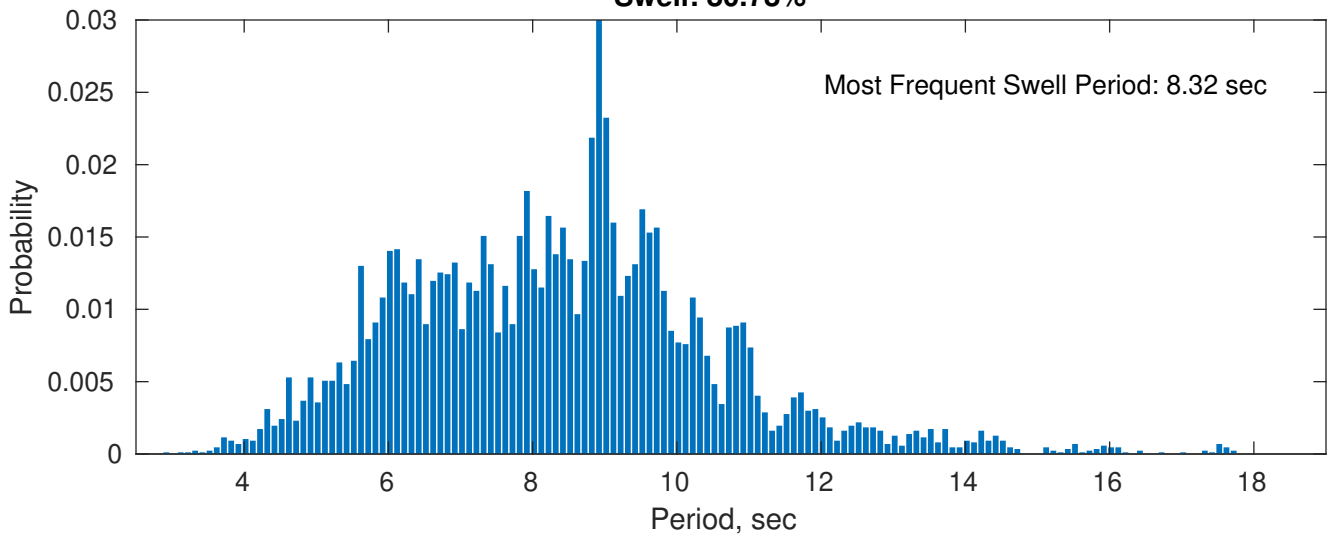
August Peak Wave Period PDF: 1979 - 2015



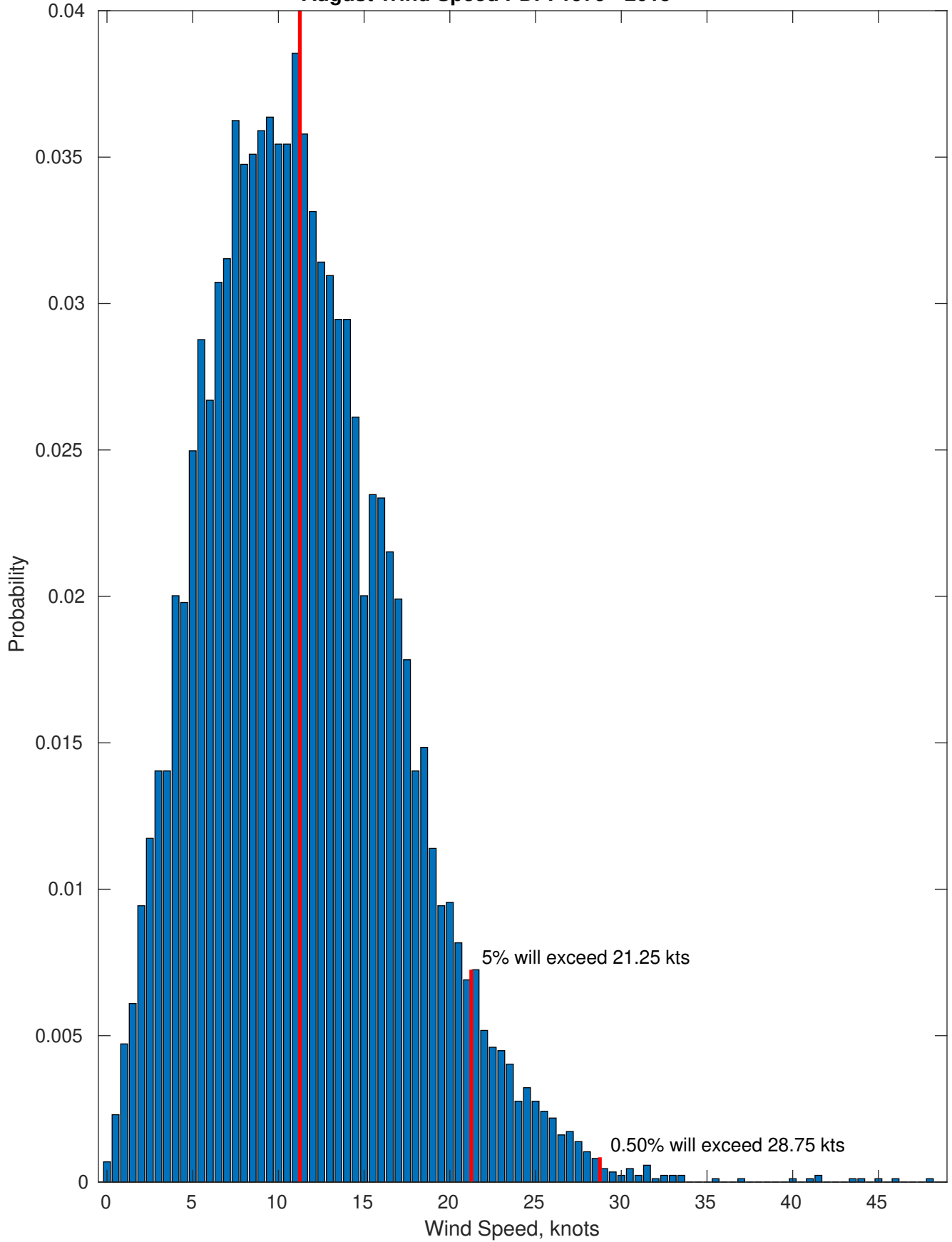
Wind-Sea: 19.22%



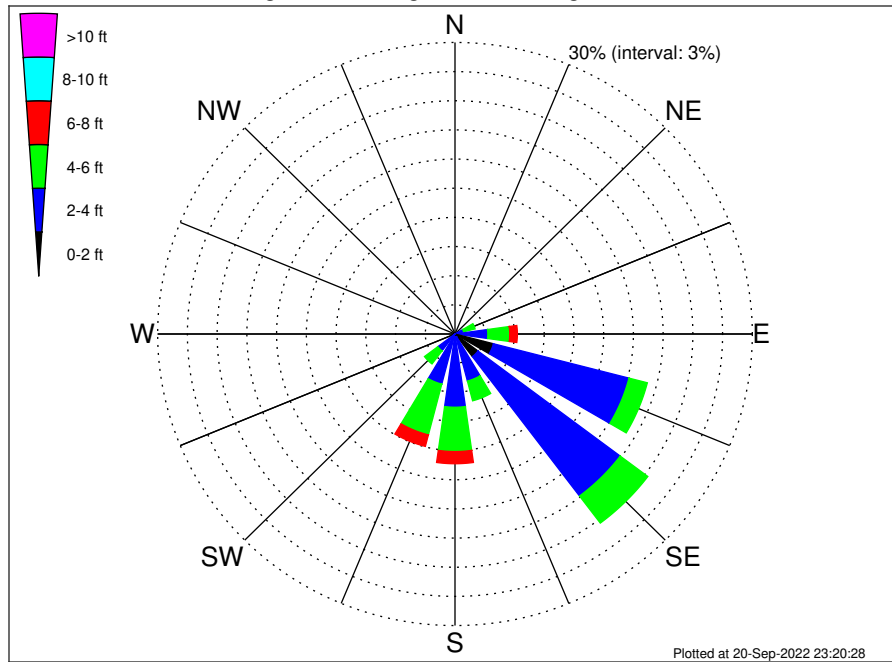
Swell: 80.78%



Most Frequent Wind Speed: 11.25 kts
August Wind Speed PDF: 1979 - 2015



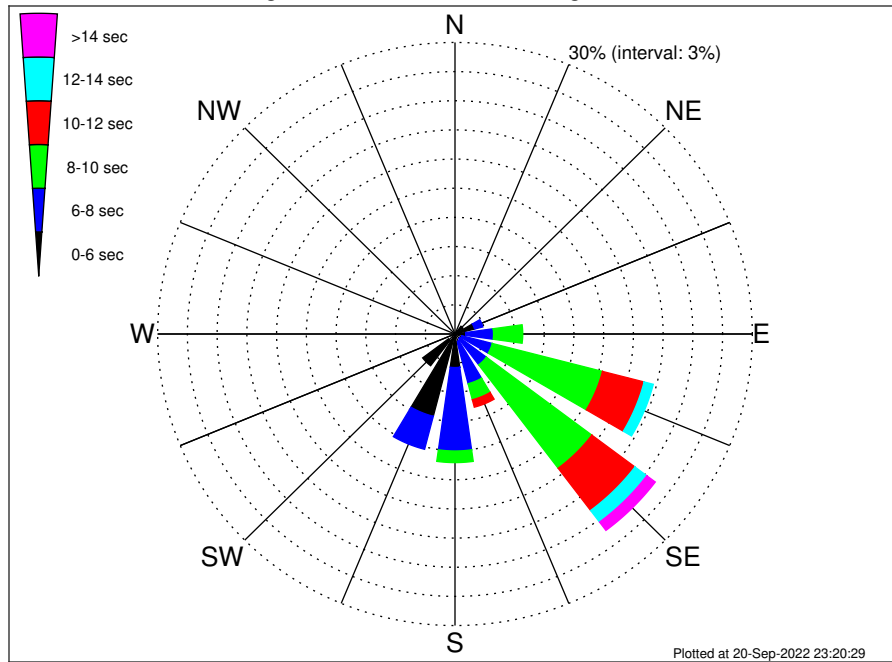
OCS-A 0537 Climatological WaveHeight Rose for August: 1979 - 2015



Joint Frequency Distribution Table

	N	NNE	NE	ENE	E	ESE	SE	SSE	S	SSW	SW	WSW	W	WNW	NW	NNW	Total
calm	•	•	•	•	0.01	•	•	•	•	•	•	•	•	•	•	•	0.01
1 - 2 ft	•	•	0.02	•	0.29	4.00	2.91	0.32	0.28	0.31	•	0.05	0.02	•	•	0.01	8.22
2 - 4 ft	0.59	0.61	0.46	0.91	3.01	14.13	17.96	4.67	7.26	5.02	2.17	0.39	0.09	0.23	0.30	0.32	58.14
4 - 6 ft	0.32	0.33	0.45	1.19	2.21	1.91	3.49	2.11	4.56	5.40	1.68	0.05	•	0.10	0.22	0.23	24.23
6 - 8 ft	0.06	0.05	0.18	0.46	0.77	0.51	0.51	0.54	1.25	1.22	0.33	•	•	0.02	0.05	0.01	5.96
8 - 10 ft	•	0.01	0.05	0.25	0.62	0.20	0.21	0.25	0.24	0.31	•	•	•	•	•	•	2.14
10 - 12 ft	•	•	0.02	0.16	0.25	•	0.12	0.13	0.18	0.02	•	•	•	•	•	•	0.89
12 - 14 ft	•	•	0.01	•	•	•	0.10	0.06	0.07	•	•	•	•	•	•	•	0.24
14 - 16 ft	•	•	•	•	•	•	0.01	0.03	0.03	•	•	•	•	•	•	•	0.08
16 - 18 ft	•	•	•	•	•	•	•	•	0.02	•	•	•	•	•	•	•	0.02
> 18 ft	•	•	•	•	•	•	•	•	0.07	•	•	•	•	•	•	•	0.07
Total	0.97	1.00	1.20	2.97	7.17	20.75	25.30	8.11	13.97	12.28	4.19	0.48	0.12	0.36	0.56	0.58	100.00

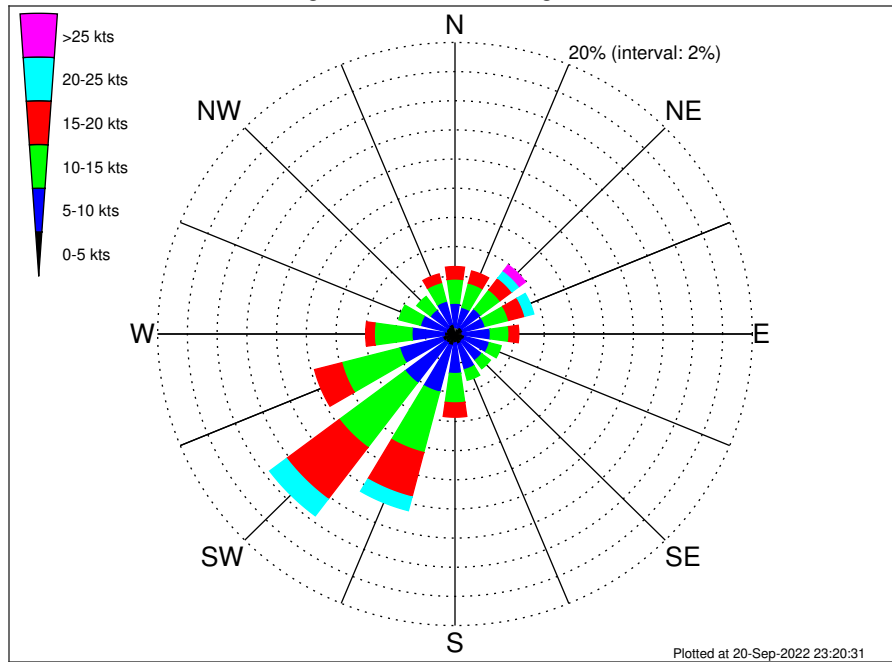
OCS-A 0537 Climatological WavePeriod Rose for August: 1979 - 2015



Joint Frequency Distribution Table

	N	NNE	NE	ENE	E	ENE	SE	SSE	S	SSW	SW	WSW	W	WNW	NW	NNW	Total
calm	•	•	•	•	•	•	•	•	•	•	•	•	•	•	•	•	•
1 - 2 sec	•	•	•	•	•	•	•	•	•	•	•	•	•	•	•	•	•
2 - 4 sec	0.31	0.36	0.16	0.09	0.01	0.02	0.08	0.05	0.05	0.39	0.82	0.39	0.12	0.20	0.23	0.30	3.57
4 - 6 sec	0.66	0.63	0.84	1.94	1.07	0.71	0.53	0.74	3.41	8.35	3.27	0.09	•	0.16	0.33	0.28	23.01
6 - 8 sec	•	0.01	0.20	0.86	2.81	3.15	3.36	4.50	8.58	3.51	0.10	•	•	•	•	•	27.09
8 - 10 sec	•	•	•	0.07	2.95	11.48	13.33	1.70	1.20	0.01	•	•	•	•	•	•	30.74
10 - 12 sec	•	•	•	•	0.33	4.34	5.44	0.79	0.46	0.01	•	•	•	•	•	•	11.38
12 - 14 sec	•	•	•	•	•	0.96	1.50	0.25	0.15	•	•	•	•	•	•	•	2.85
14 - 16 sec	•	•	•	•	•	0.08	0.74	0.08	0.13	•	•	•	•	•	•	•	1.02
18 - 20 sec	•	•	•	•	•	•	0.33	•	•	•	•	•	•	•	•	•	0.33
22 - 24 sec	•	•	•	•	•	•	•	•	•	•	•	•	•	•	•	•	•
Total	0.97	1.00	1.20	2.97	7.17	20.75	25.30	8.11	13.97	12.28	4.19	0.48	0.12	0.36	0.56	0.58	100.00

OCS-A 0537 Climatological Wind Rose for August: 1979 - 2015



Joint Frequency Distribution Table

	N	NNE	NE	ENE	E	ESE	SE	SSE	S	SSW	SW	WSW	W	WNW	NW	NNW	Total
calm	0.01	0.01	0.02	•	0.03	0.01	0.01	0.01	0.01	0.05	•	0.01	0.02	0.03	0.02	0.03	0.30
0 - 5 kts	0.45	0.44	0.54	0.56	0.46	0.67	0.62	0.70	0.61	0.77	0.77	0.85	0.69	0.59	0.60	0.67	9.99
5 - 10 kts	1.66	1.44	1.59	1.53	1.89	1.71	1.62	1.82	2.09	3.30	3.43	2.98	2.19	1.78	1.45	1.62	32.11
10 - 15 kts	1.66	1.73	1.65	1.63	1.25	0.82	0.72	0.75	2.01	4.28	5.55	4.03	2.53	1.50	1.15	1.32	32.58
15 - 20 kts	0.85	0.85	1.00	1.13	0.66	0.20	0.25	0.24	0.98	3.15	4.44	1.89	0.58	0.35	0.41	0.61	17.58
20 - 25 kts	0.22	0.43	0.62	0.62	0.10	0.02	0.09	0.09	0.30	0.97	1.43	0.29	0.02	0.06	0.22	0.14	5.62
25 - 30 kts	0.01	0.18	0.45	0.26	0.05	0.01	0.02	0.01	0.05	0.07	0.23	0.01	•	•	0.08	0.03	1.47
30 - 35 kts	0.01	0.01	0.06	0.08	0.02	•	0.03	•	•	•	•	•	0.01	•	•	•	0.23
35 - 40 kts	•	•	•	•	•	0.01	•	•	•	•	0.01	•	•	•	•	•	0.02
40 - 45 kts	0.01	•	0.01	0.01	•	•	0.01	•	•	0.01	•	•	•	0.01	•	•	0.07
45 - 50 kts	•	0.01	•	•	•	•	•	0.01	•	•	•	0.01	•	•	•	•	0.03
Total	4.88	5.10	5.94	5.83	4.46	3.45	3.39	3.64	6.05	12.60	15.86	10.07	6.04	4.32	3.94	4.43	100.00