

OCS-A 0537 - December

Latitude: 39.96 N Longitude: 72.73 W

Weather Days

Wave Height > 3.0 ft Mean: 24.3 days Range: 22.7 - 25.8 days p50:24.5 days p75:23.5 days p90:22 days

Wave Height > 4.0 ft Mean: 19.7 days Range: 17.6 - 21.8 days p50:20 days p75:18.5 days p90:17.5 days

Wave Height > 5.0 ft Mean: 15.3 days Range: 12.8 - 17.7 days p50:16 days p75:14 days p90:12 days

Wind Speed > 20.0 knots Mean: 12.2 days Range: 9.7 - 14.7 days p50:13 days p75:11 days p90:8.5 days

Wind Speed > 25.0 knots Mean: 6.1 days Range: 4.1 - 8.0 days p50:6.5 days p75:5 days p90:3 days

Wind Speed > 30.0 knots Mean: 2.3 days Range: 1.1 - 3.6 days p50:2.5 days p75:1.5 days p90:1 days

Working Window Probability

Wave Height < 3.0 ft 3 days or longer: 4%
 5 days or longer: 0%
 7 days or longer: 0%

Wave Height < 4.0 ft 3 days or longer: 11%
 5 days or longer: 1%
 7 days or longer: 0%

Wave Height < 5.0 ft 3 days or longer: 24%
 5 days or longer: 2%
 7 days or longer: 0%

Waves

Mean Height: 4 - 6 ft

The wave heights will occasionally reach 12 - 14 ft, but rarely higher.

Mean Period: 4 - 6 sec

The wave periods will occasionally reach 12 - 14 sec, but rarely longer.

Principle Direction, from: WNW

WindSea/Swell: 53% / 47%

Winds

Mean Speed: 15 - 20 kts

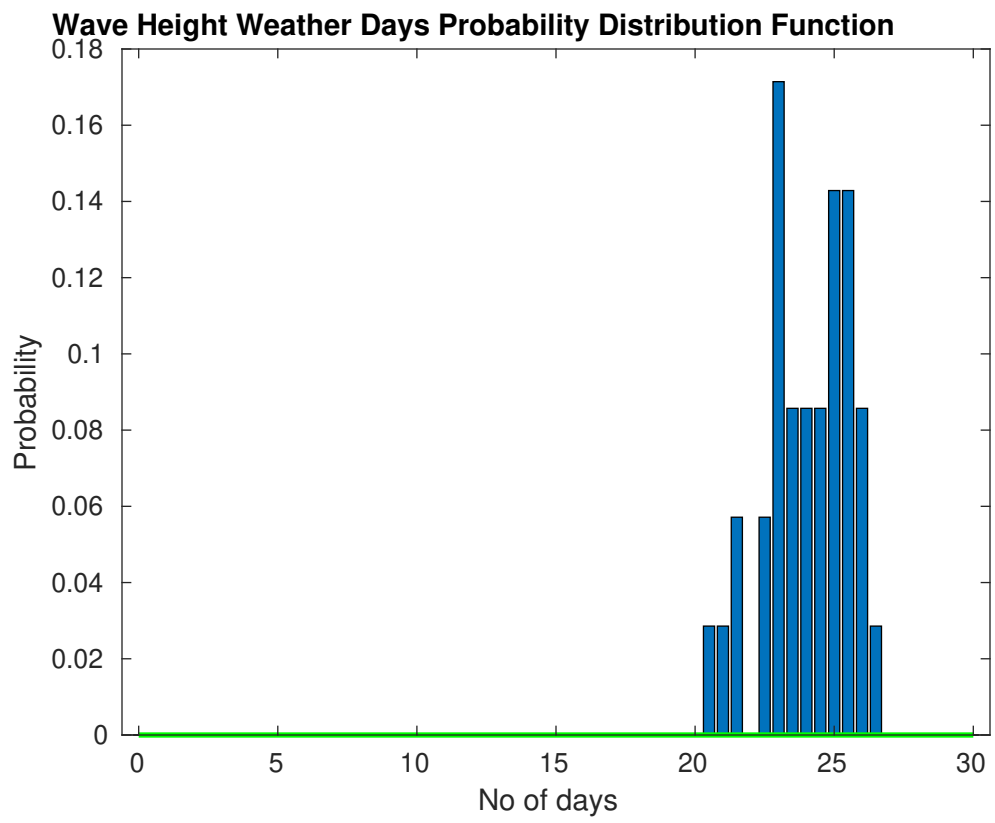
The winds will occasionally reach 35 - 40 kts, but rarely greater.

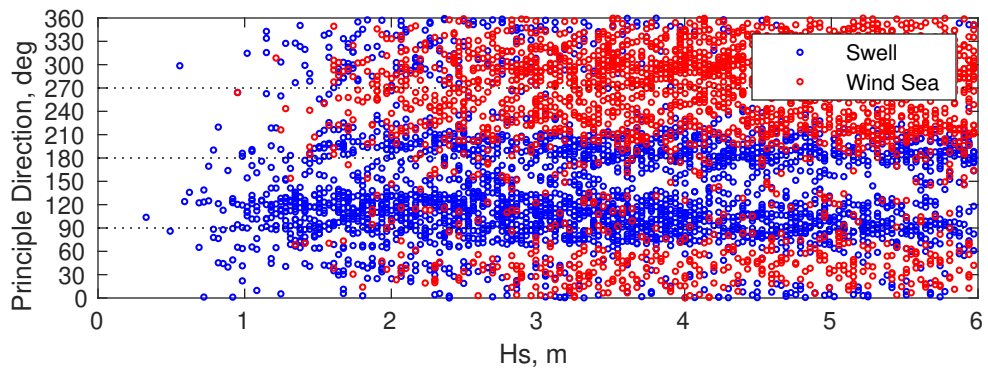
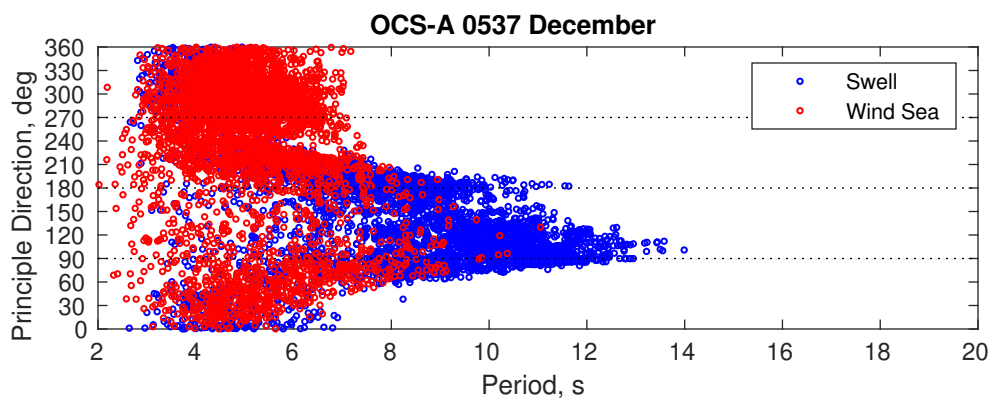
Principle Direction, from: WNW

Severe Storms

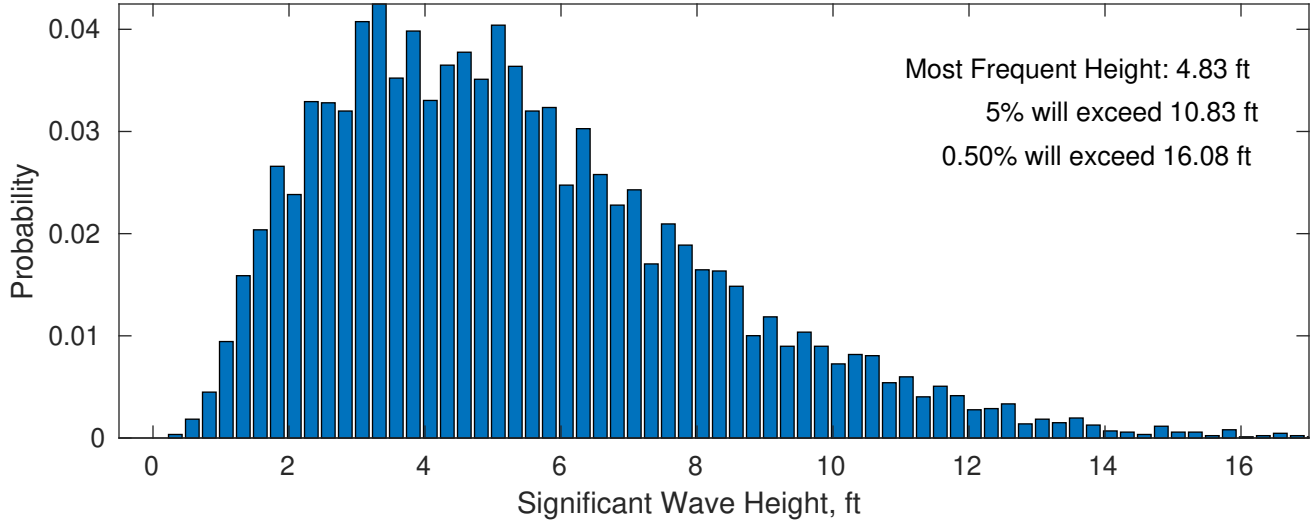
There is a 108 % chance of a storm occurring in the month with winds peaking above 34 kts.

There is a 68 % chance of a storm occurring in the month with waves peaking at 4m (13 ft) or greater.

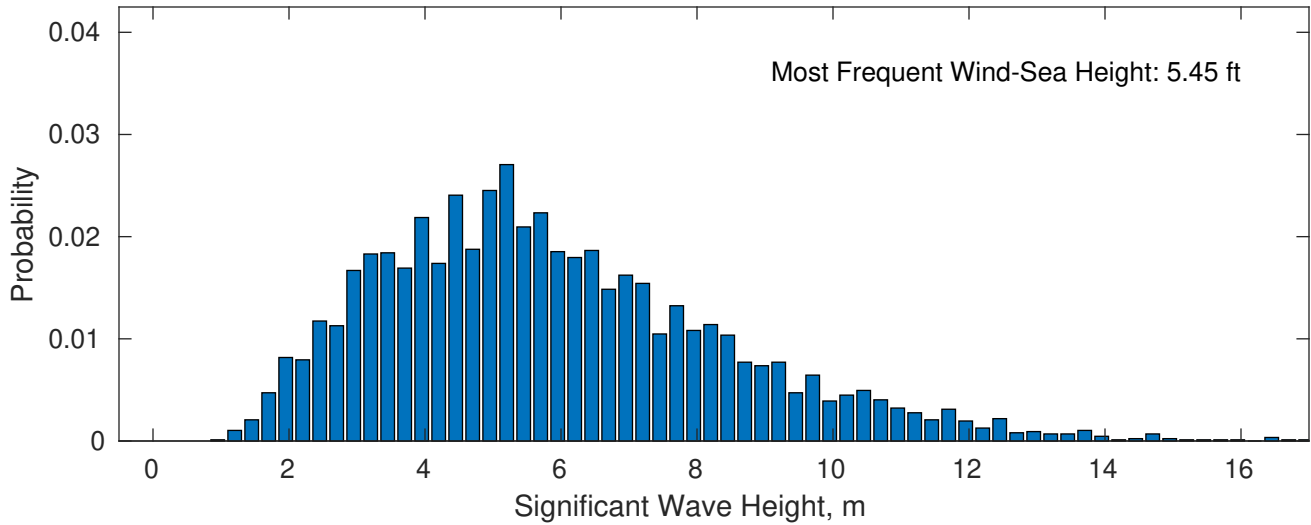




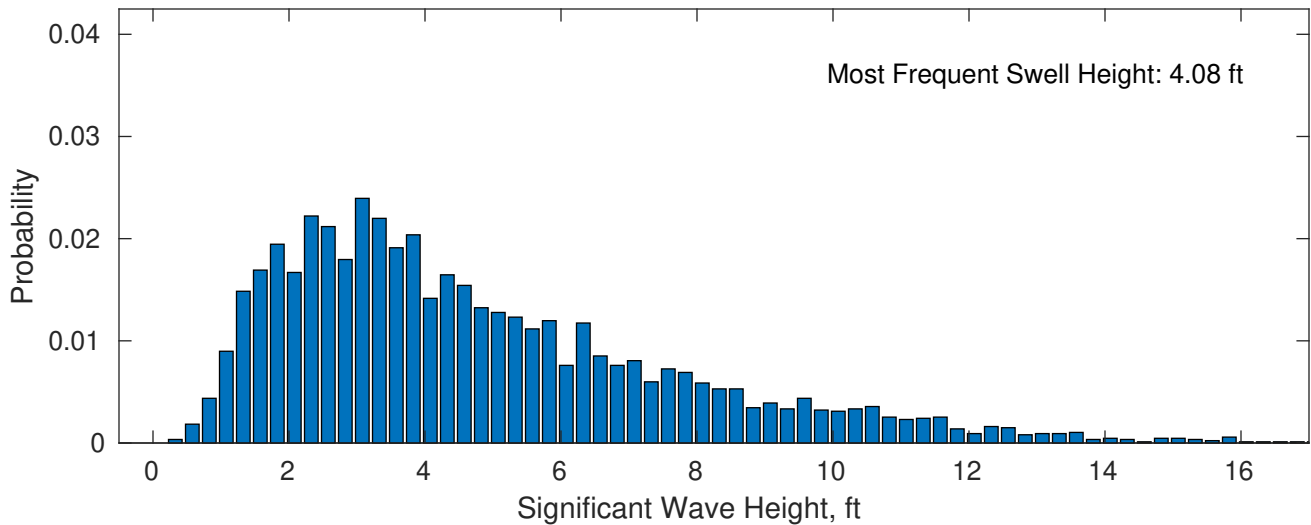
December Wave Height PDF: 1979 - 2015



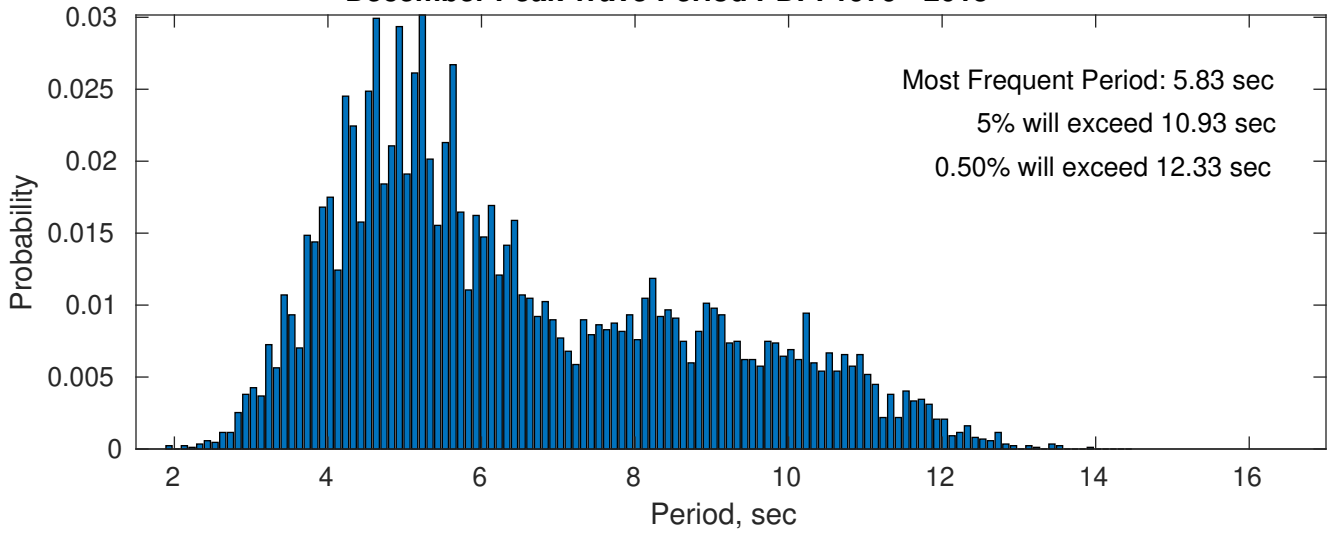
Wind-Sea: 52.83%



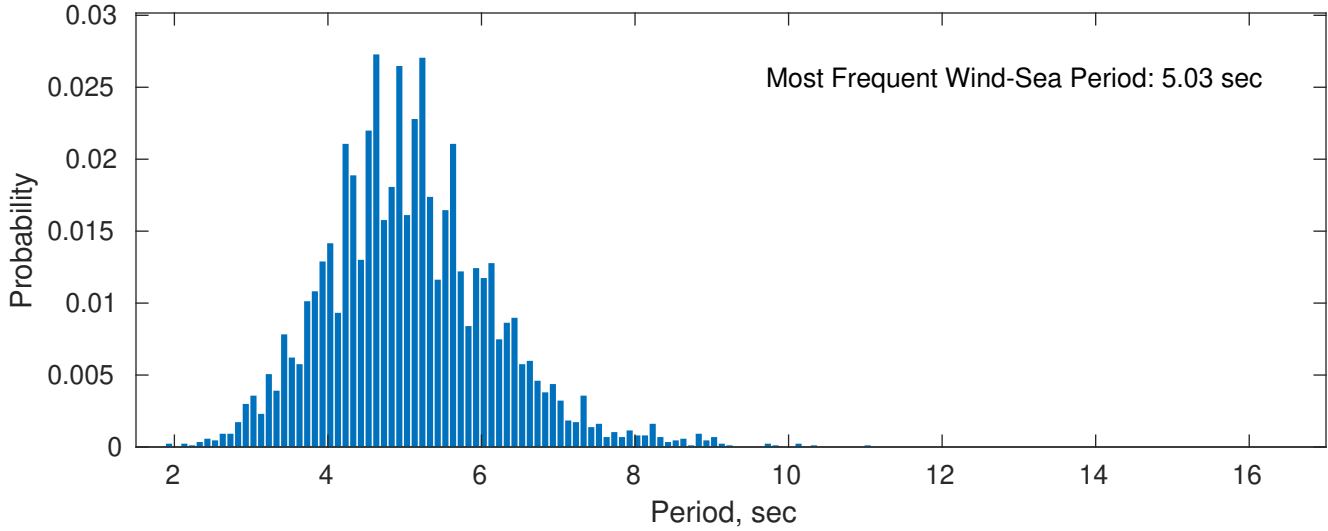
Swell: 47.17%



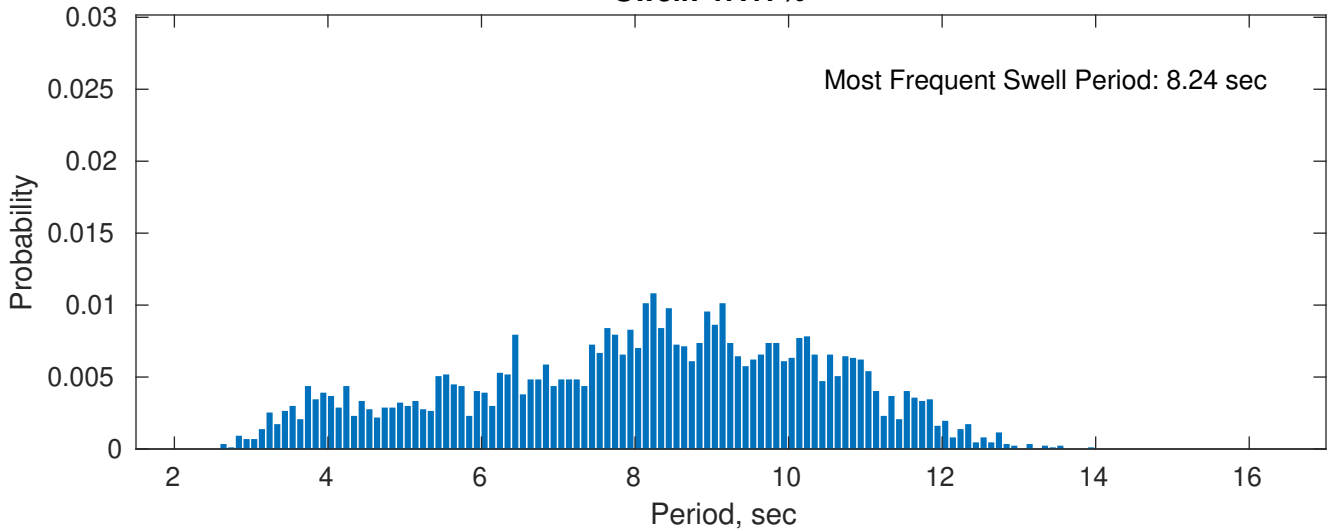
December Peak Wave Period PDF: 1979 - 2015



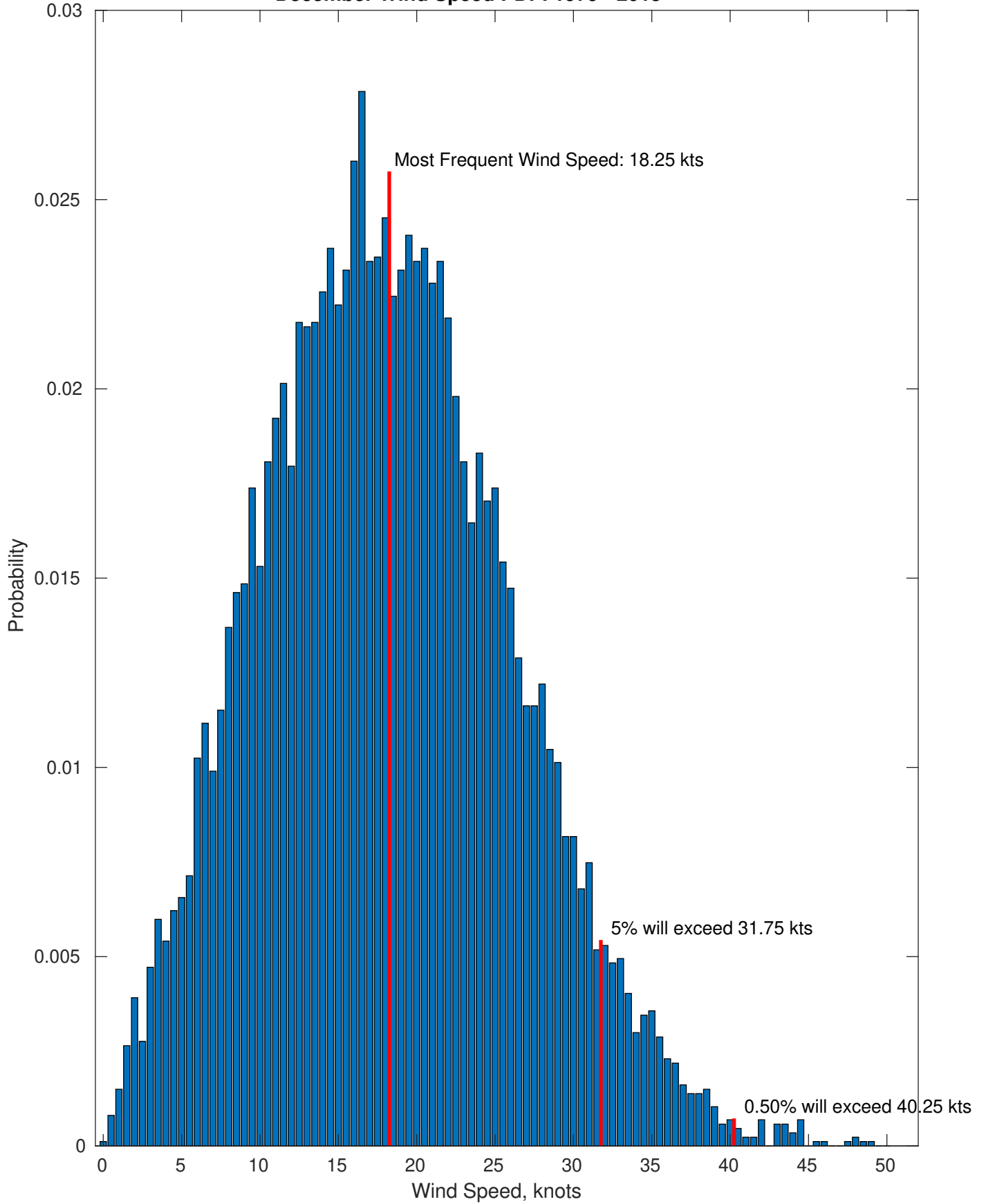
Wind-Sea: 52.83%



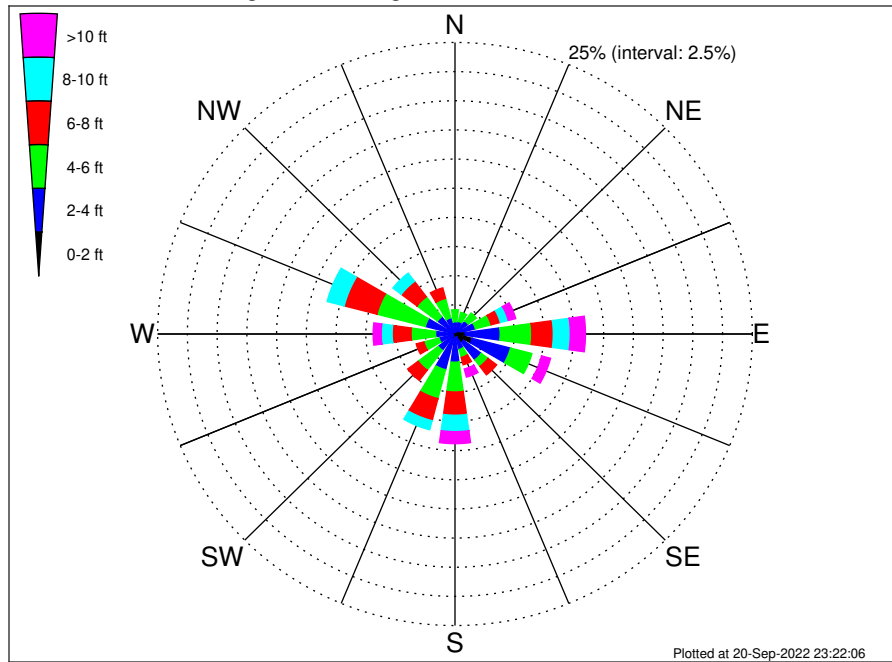
Swell: 47.17%



December Wind Speed PDF: 1979 - 2015



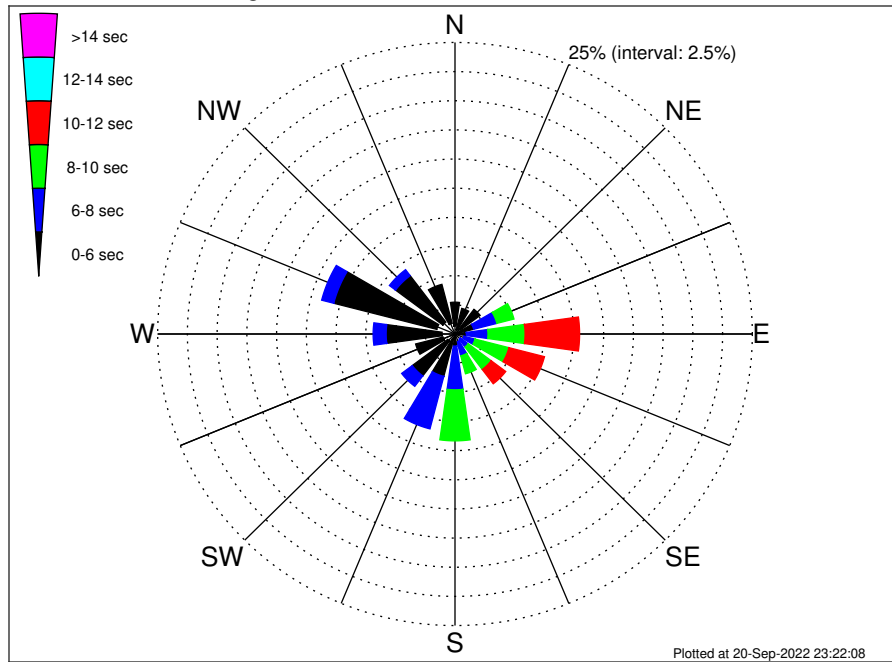
OCS-A 0537 Climatological WaveHeight Rose for December: 1979 - 2015



Joint Frequency Distribution Table

	N	NNE	NE	ENE	E	ESE	SE	SSE	S	SSW	SW	WSW	W	WNW	NW	NNW	Total
calm	0.02	0.01	0.06	0.06	0.07	0.09	0.07	0.01	0.05	•	0.01	•	0.02	0.01	•	•	0.48
1 - 2 ft	0.10	0.09	0.31	0.40	0.81	1.40	0.83	0.29	0.31	0.44	0.28	0.16	0.21	0.32	0.21	0.17	6.33
2 - 4 ft	0.92	1.01	1.02	1.31	2.92	3.33	1.88	1.07	2.06	2.73	1.47	1.22	1.40	2.24	1.65	1.25	27.50
4 - 6 ft	1.04	0.81	0.86	1.36	2.66	1.85	0.70	0.70	2.56	2.56	2.12	1.32	2.06	4.20	2.14	1.73	28.66
6 - 8 ft	0.55	0.33	0.62	0.81	1.81	0.56	0.91	0.66	1.99	1.96	1.11	0.67	1.59	2.84	1.66	0.93	18.99
8 - 10 ft	0.14	0.20	0.15	0.69	1.43	0.28	0.45	0.37	1.40	0.81	0.48	0.23	0.92	1.48	0.89	0.37	10.28
10 - 12 ft	0.06	0.03	0.07	0.44	0.64	0.39	0.21	0.35	0.70	0.31	0.13	0.16	0.62	0.41	0.30	0.12	4.94
12 - 14 ft	0.03	0.01	•	0.17	0.28	0.23	0.18	0.26	0.22	0.10	0.02	0.05	0.06	0.06	0.07	0.03	1.78
14 - 16 ft	0.01	•	0.02	0.02	0.14	0.06	0.06	0.08	0.05	0.02	•	•	•	•	•	0.01	0.47
16 - 18 ft	•	•	•	•	0.10	0.02	0.03	0.01	0.06	0.01	•	•	•	•	•	•	0.24
> 18 ft	•	•	•	0.01	0.12	0.08	0.07	0.02	0.01	•	•	•	•	•	•	•	0.31
Total	2.88	2.50	3.12	5.27	10.97	8.30	5.39	3.82	9.40	8.93	5.62	3.81	6.88	11.58	6.91	4.62	100.00

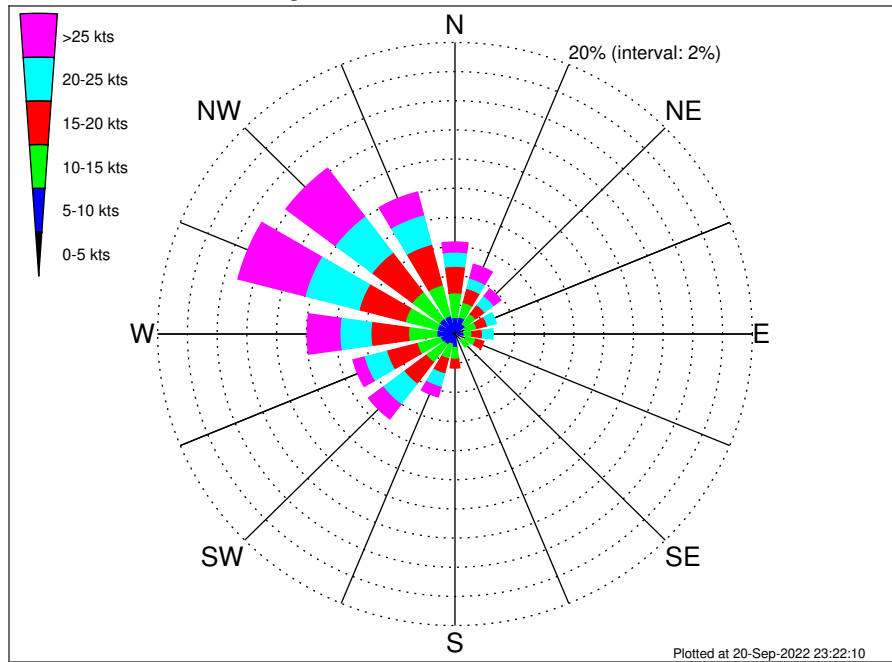
OCS-A 0537 Climatological WavePeriod Rose for December: 1979 - 2015



Joint Frequency Distribution Table

	N	NNE	NE	ENE	E	ESE	SE	SSE	S	SSW	SW	WSW	W	WNW	NW	NNW	Total
calm	•	•	•	•	•	•	•	•	•	•	•	•	•	•	•	•	•
1 - 2 sec	•	•	•	•	•	•	•	•	•	•	•	•	0.01	•	•	•	0.01
2 - 4 sec	0.68	0.38	0.54	0.21	0.20	0.28	0.14	0.25	0.23	0.41	0.76	1.04	1.08	1.59	1.28	0.94	10.00
4 - 6 sec	2.05	1.89	2.11	1.42	0.76	0.49	0.43	0.44	0.81	3.34	3.74	2.38	4.70	8.94	4.98	3.45	41.92
6 - 8 sec	0.15	0.23	0.46	2.01	1.82	0.97	0.83	1.24	3.75	4.65	1.12	0.39	1.09	1.05	0.64	0.22	20.63
8 - 10 sec	•	•	0.01	1.48	3.12	2.95	2.42	1.59	4.37	0.51	•	•	•	•	•	•	16.45
10 - 12 sec	•	•	•	0.15	4.58	3.09	1.53	0.30	0.24	0.02	•	•	•	•	•	•	9.91
12 - 14 sec	•	•	•	•	0.49	0.53	0.05	•	•	•	•	•	•	•	•	•	1.07
14 - 16 sec	•	•	•	•	•	•	•	•	•	•	•	•	•	•	•	•	•
18 - 20 sec	•	•	•	•	•	•	•	•	•	•	•	•	•	•	•	•	•
22 - 24 sec	•	•	•	•	•	•	•	•	•	•	•	•	•	•	•	•	•
Total	2.88	2.50	3.12	5.27	10.97	8.30	5.39	3.82	9.40	8.93	5.62	3.81	6.88	11.58	6.91	4.62	100.00

OCS-A 0537 Climatological Wind Rose for December: 1979 - 2015



Joint Frequency Distribution Table

	N	NNE	NE	ENE	E	ESE	SE	SSE	S	SSW	SW	WSW	W	WNW	NW	NNW	Total
calm	•	0.01	0.01	•	•	0.01	•	•	0.01	•	0.02	0.01	0.01	•	•	•	0.09
0 - 5 kts	0.21	0.22	0.22	0.26	0.12	0.25	0.17	0.23	0.20	0.15	0.13	0.17	0.26	0.24	0.29	0.20	3.32
5 - 10 kts	0.93	0.97	0.62	0.45	0.51	0.49	0.39	0.41	0.74	0.58	0.75	0.82	0.96	0.99	1.01	1.09	11.71
10 - 15 kts	1.69	1.05	0.89	0.81	0.53	0.69	0.56	0.37	0.79	1.04	1.53	1.65	1.90	2.23	2.30	2.19	20.21
15 - 20 kts	1.82	0.99	0.76	0.74	0.70	0.54	0.48	0.37	0.60	1.06	1.85	2.11	2.53	3.21	3.38	2.88	24.02
20 - 25 kts	0.98	0.73	0.77	0.61	0.71	0.28	0.30	0.28	0.48	0.96	1.77	1.57	2.08	3.75	3.12	2.10	20.48
25 - 30 kts	0.43	0.54	0.36	0.33	0.24	0.26	0.30	0.15	0.18	0.52	0.86	0.59	1.32	2.67	2.61	1.09	12.47
30 - 35 kts	0.21	0.24	0.12	0.07	0.10	0.16	0.14	0.09	0.18	0.12	0.29	0.13	0.56	1.55	1.01	0.35	5.32
35 - 40 kts	0.02	0.08	0.08	0.08	0.06	0.03	0.05	0.01	0.08	0.05	0.06	0.03	0.28	0.40	0.39	0.14	1.84
40 - 45 kts	0.02	0.08	0.05	•	0.03	0.02	•	•	0.01	•	0.02	0.01	0.03	0.02	0.12	0.02	0.45
45 - 50 kts	•	0.03	•	•	0.01	0.01	•	•	0.01	•	•	0.01	•	•	•	0.01	0.09
Total	6.31	4.94	3.87	3.35	3.02	2.76	2.39	1.91	3.29	4.45	7.29	7.09	9.95	15.08	14.24	10.06	100.00