

OCS-A 0537 - February

Latitude: 39.96 N Longitude: 72.73 W

Weather Days

Wave Height > 3.0 ft Mean: 24.1 days Range: 22.2 - 26.1 days p50:25 days p75:23 days p90:22 days

Wave Height > 4.0 ft Mean: 19.4 days Range: 16.6 - 22.2 days p50:20.5 days p75:17.5 days p90:16 days

Wave Height > 5.0 ft Mean: 14.5 days Range: 11.4 - 17.6 days p50:15 days p75:13 days p90:10 days

Wind Speed > 20.0 knots Mean: 11.4 days Range: 8.9 - 13.8 days p50:11.5 days p75:10 days p90:9.5 days

Wind Speed > 25.0 knots Mean: 5.4 days Range: 3.6 - 7.2 days p50:5 days p75:4.5 days p90:3.5 days

Wind Speed > 30.0 knots Mean: 1.8 days Range: 0.8 - 2.8 days p50:2 days p75:1.5 days p90:1 days

Working Window Probability

Wave Height < 3.0 ft 3 days or longer: 3%
 5 days or longer: 0%
 7 days or longer: 0%

Wave Height < 4.0 ft 3 days or longer: 11%
 5 days or longer: 0%
 7 days or longer: 0%

Wave Height < 5.0 ft 3 days or longer: 25%
 5 days or longer: 2%
 7 days or longer: 1%

Waves

Mean Height: 4 - 6 ft

The wave heights will occasionally reach 14 - 16 ft, but rarely higher.

Mean Period: 4 - 6 sec

The wave periods will occasionally reach 12 - 14 sec, but rarely longer.

Principle Direction, from: E

WindSea/Swell: 51% / 49%

Winds

Mean Speed: 15 - 20 kts

The winds will occasionally reach 35 - 40 kts, but rarely greater.

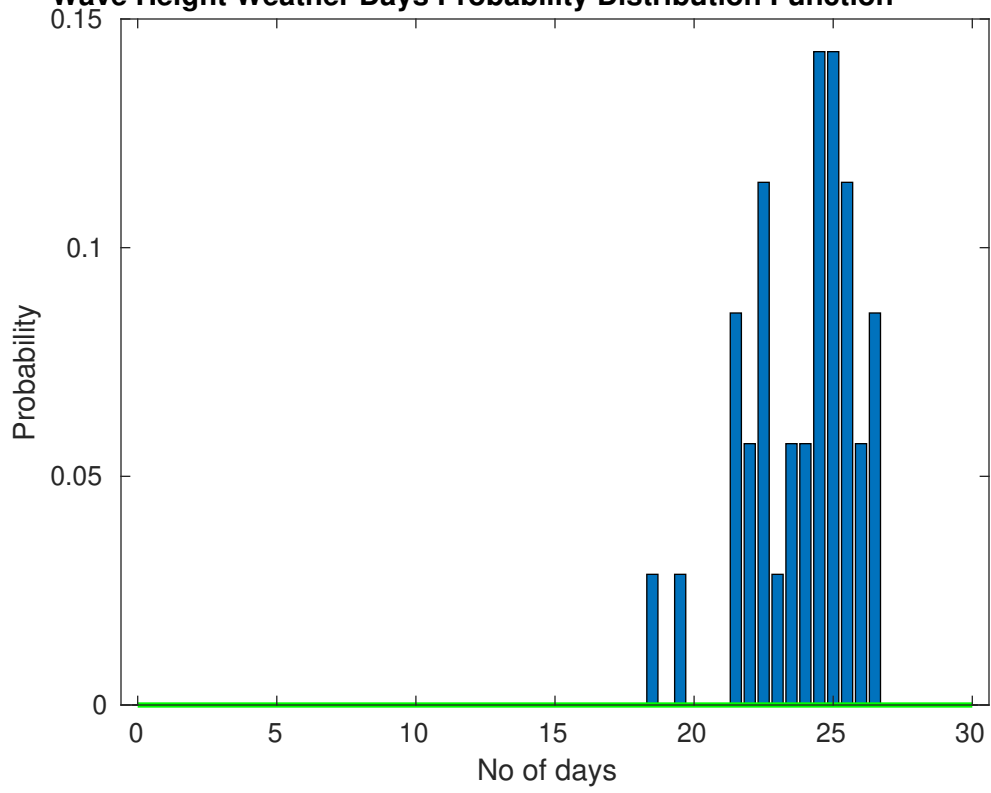
Principle Direction, from: NW

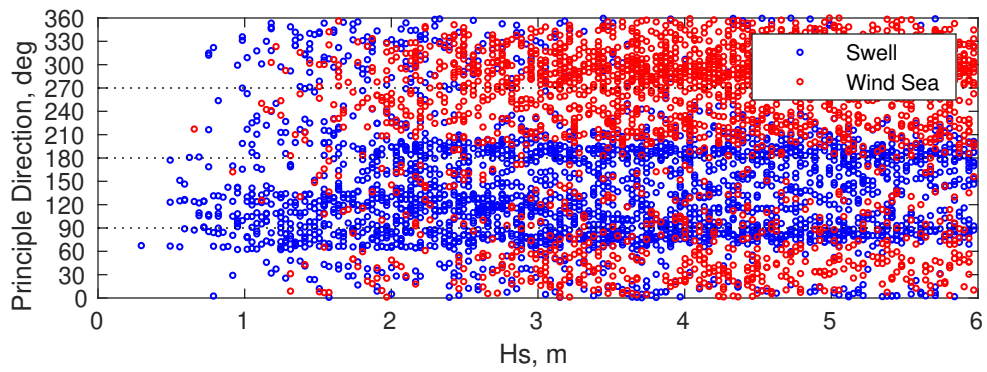
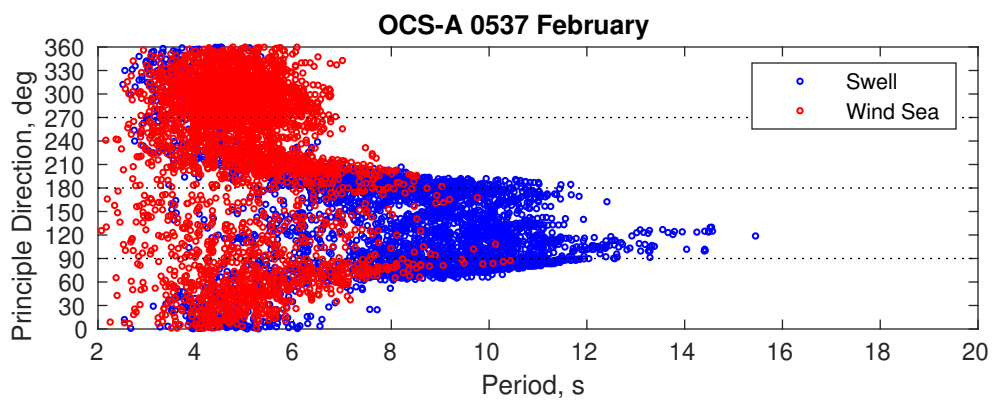
Severe Storms

There is a 71 % chance of a storm occurring in the month with winds peaking above 34 kts.

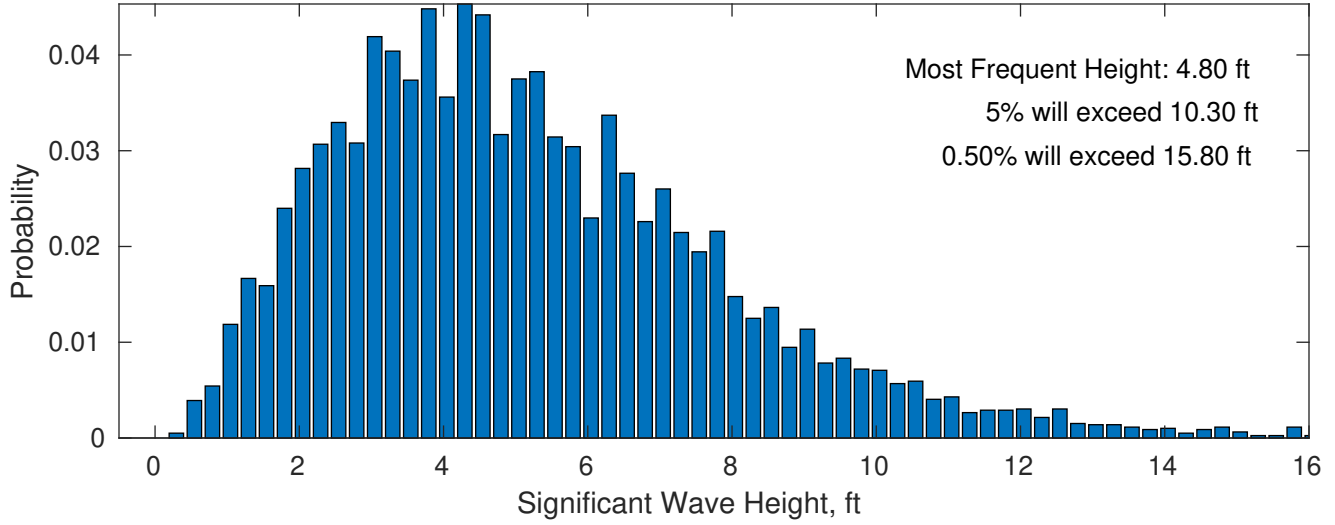
There is a 54 % chance of a storm occurring in the month with waves peaking at 4m (13 ft) or greater.

Wave Height Weather Days Probability Distribution Function

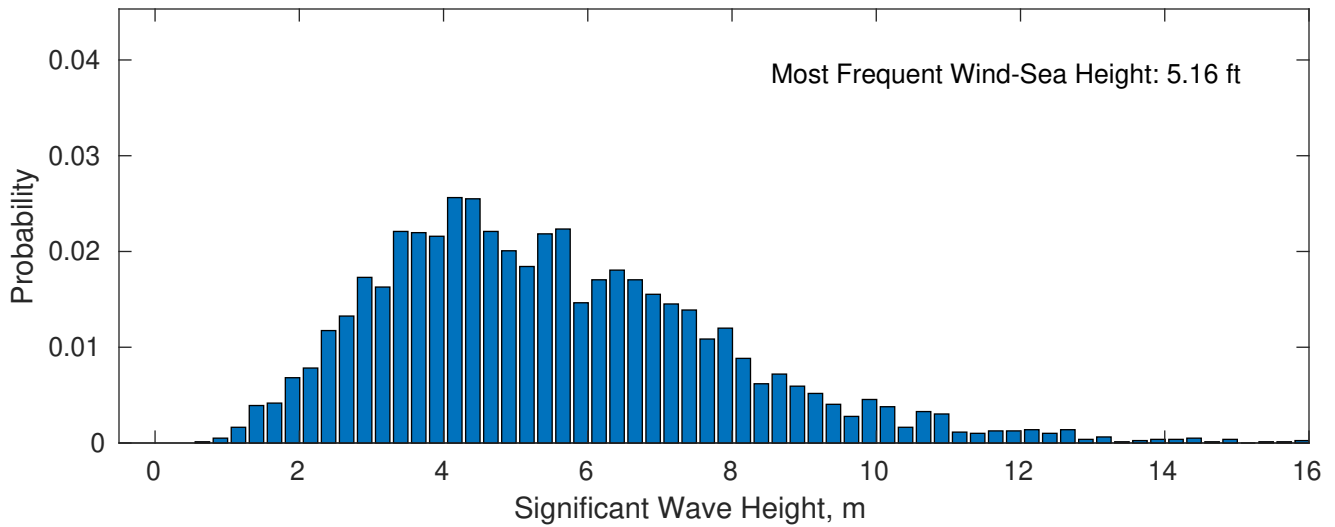




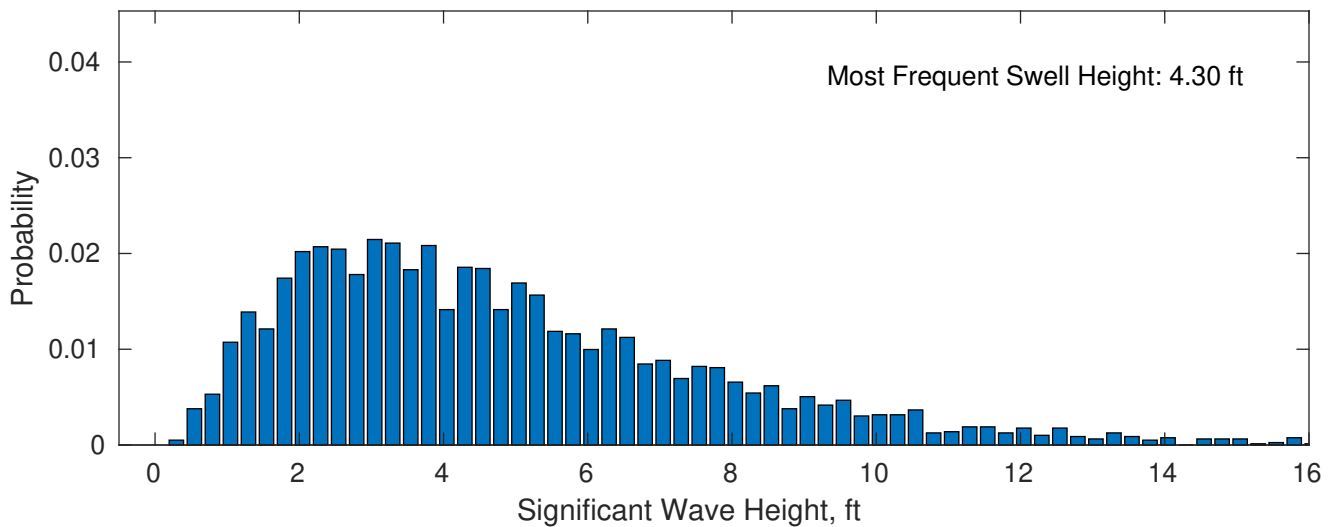
February Wave Height PDF: 1979 - 2015



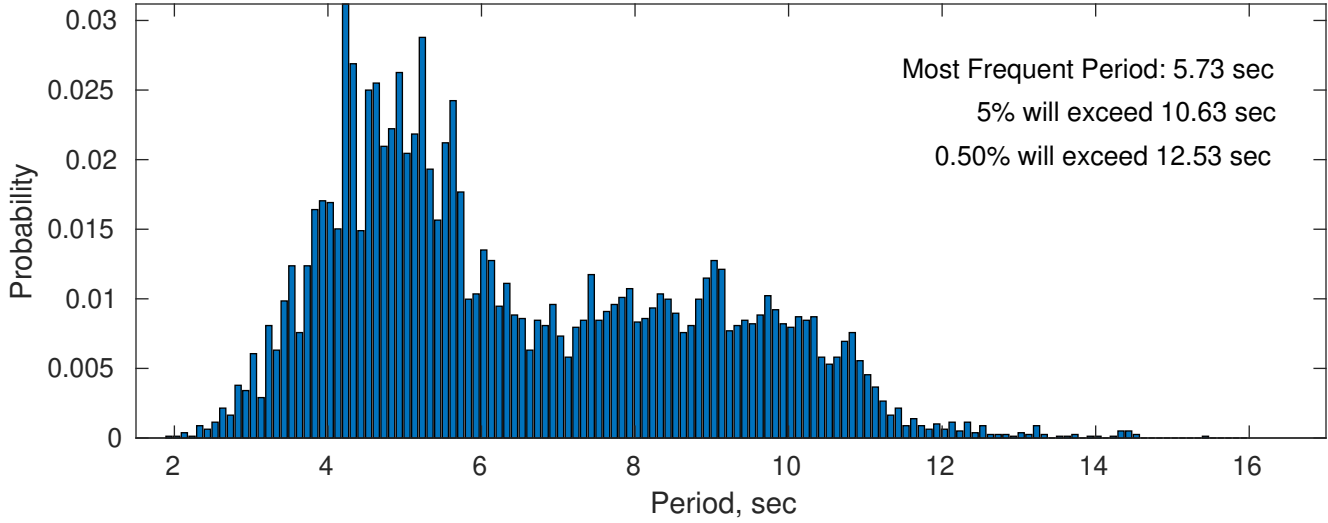
Wind-Sea: 50.94%



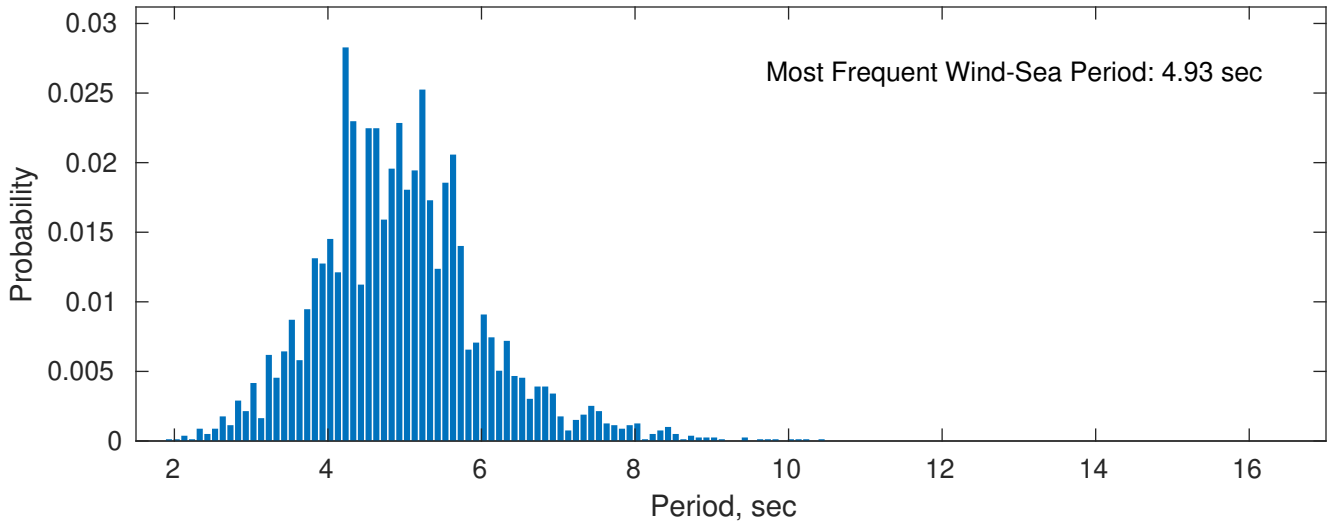
Swell: 49.06%



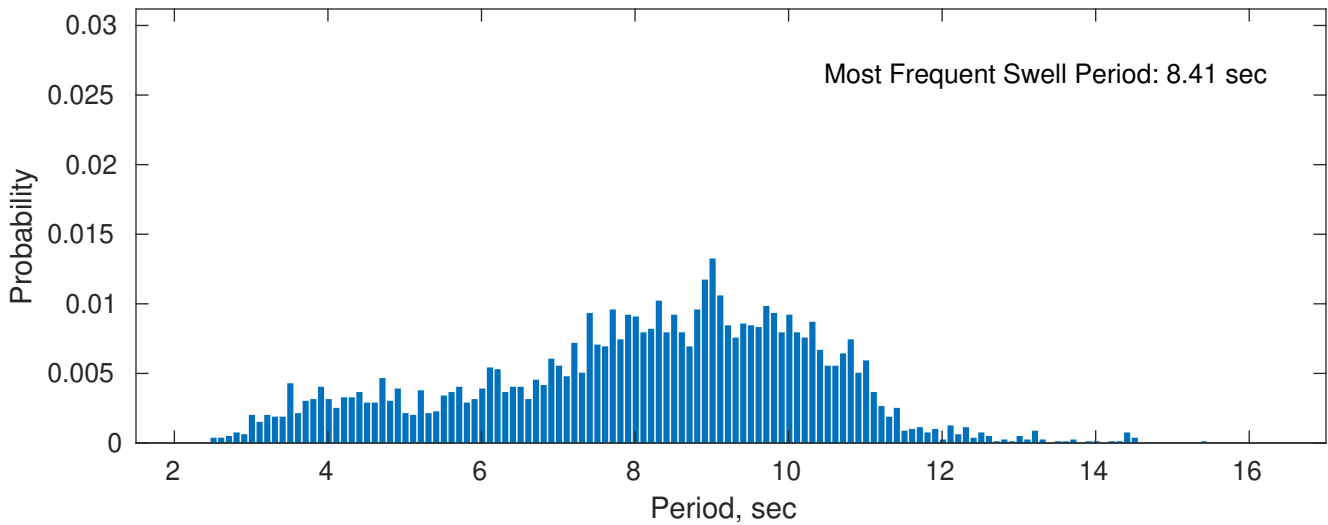
February Peak Wave Period PDF: 1979 - 2015



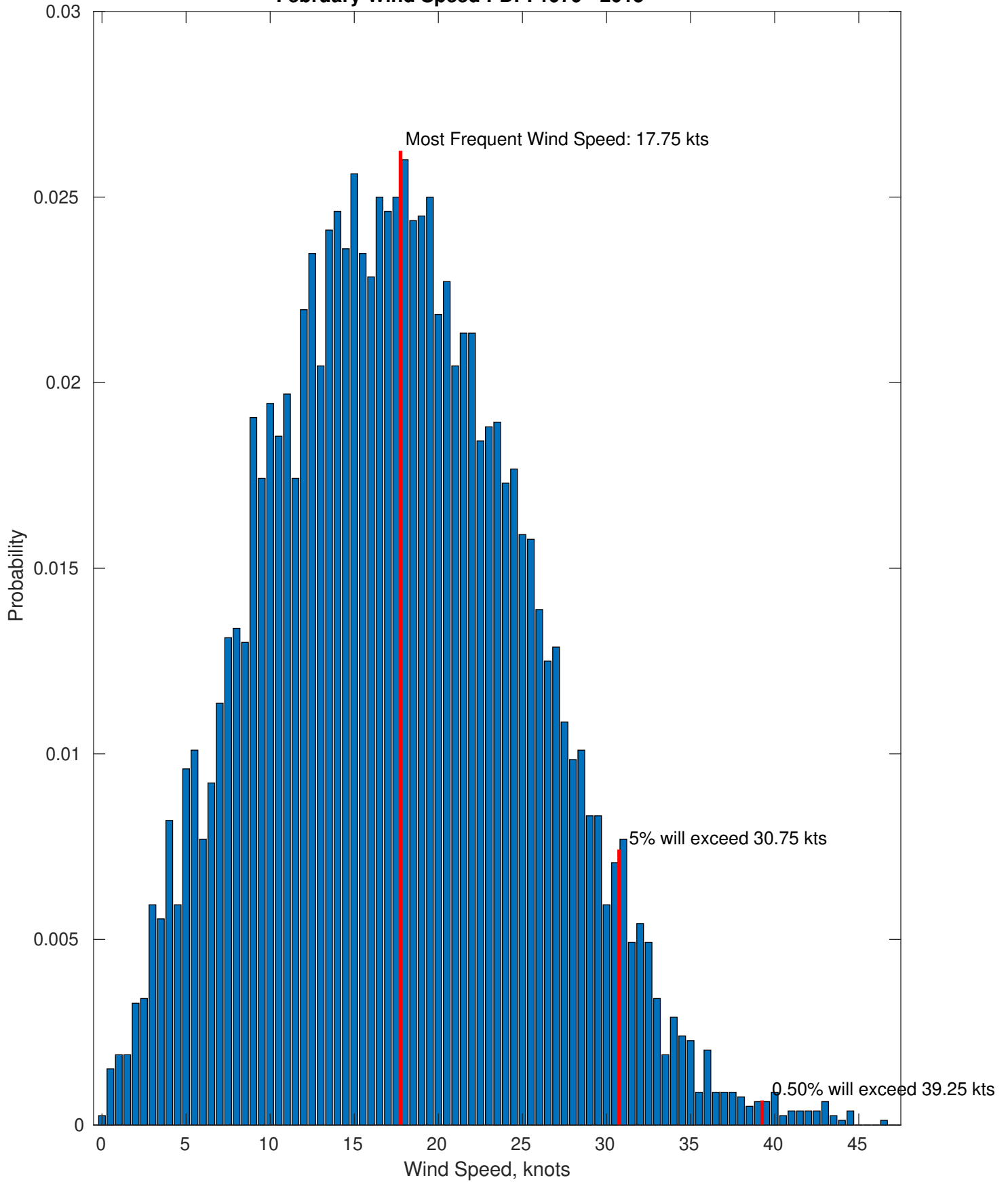
Wind-Sea: 50.94%



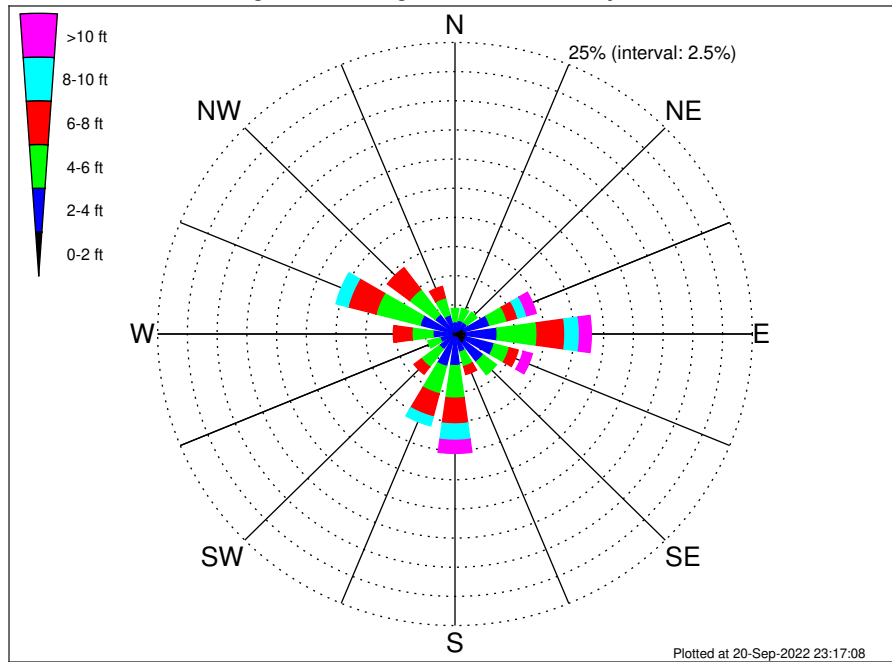
Swell: 49.06%



February Wind Speed PDF: 1979 - 2015



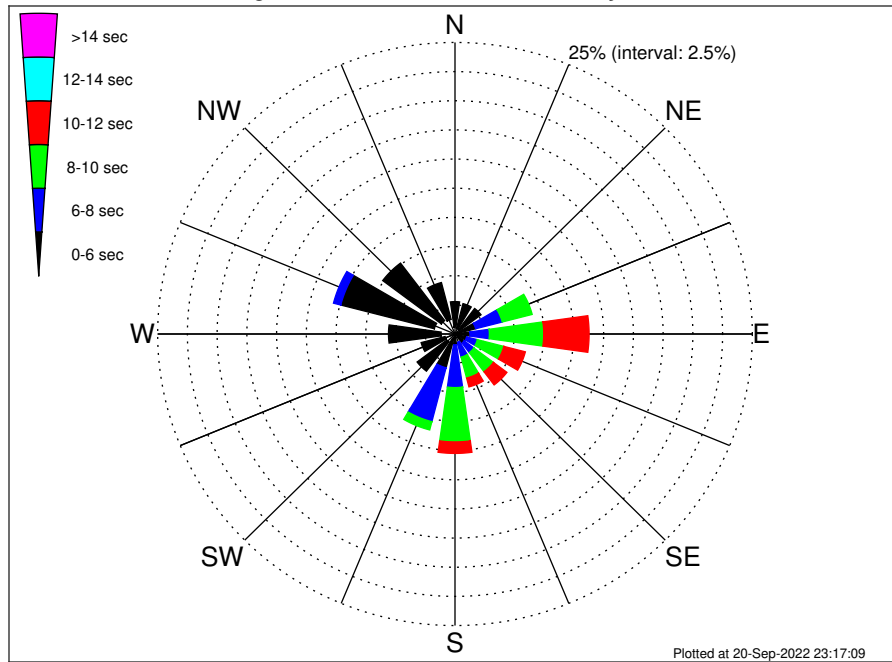
OCS-A 0537 Climatological WaveHeight Rose for February: 1979 - 2015



Joint Frequency Distribution Table

	N	NNE	NE	ENE	E	ESE	SE	SSE	S	SSW	SW	WSW	W	WNW	NW	NNW	Total
calm	0.01	0.01	•	0.09	0.19	0.14	0.18	0.06	0.05	0.01	0.03	0.01	0.01	0.01	0.04	0.03	0.87
1 - 2 ft	0.18	0.20	0.23	0.71	0.76	0.81	0.80	0.28	0.27	0.35	0.30	0.28	0.24	0.28	0.32	0.33	6.31
2 - 4 ft	0.87	1.01	1.02	2.21	2.60	2.46	2.01	1.26	2.40	2.50	1.31	1.01	1.60	2.75	1.74	1.34	28.10
4 - 6 ft	1.14	1.05	1.07	1.51	3.36	1.31	1.39	1.28	2.79	2.42	1.89	1.06	1.77	3.83	2.69	1.51	30.07
6 - 8 ft	0.48	0.38	0.50	0.93	2.34	0.77	0.58	0.71	2.21	2.05	0.78	0.56	1.57	2.44	2.34	1.01	19.63
8 - 10 ft	0.16	0.08	0.20	0.78	1.22	0.43	0.33	0.54	1.40	0.81	0.18	0.19	0.59	1.04	0.58	0.37	8.90
10 - 12 ft	0.03	0.04	0.08	0.54	0.54	0.40	0.16	0.24	0.58	0.23	0.04	0.08	0.30	0.21	0.09	0.08	3.64
12 - 14 ft	•	•	0.03	0.13	0.16	0.28	0.15	0.14	0.35	0.13	0.01	0.01	0.05	•	0.01	0.03	1.48
14 - 16 ft	•	0.03	•	0.11	0.09	0.08	0.01	0.10	0.14	•	•	•	•	•	•	0.01	0.57
16 - 18 ft	•	•	•	0.03	0.09	0.01	0.01	0.06	0.05	•	•	•	•	•	•	•	0.25
> 18 ft	•	•	•	0.01	0.11	0.03	•	0.03	•	•	•	•	•	•	•	•	0.18
Total	2.87	2.79	3.13	7.06	11.46	6.72	5.62	4.70	10.24	8.50	4.54	3.19	6.14	10.55	7.80	4.70	100.00

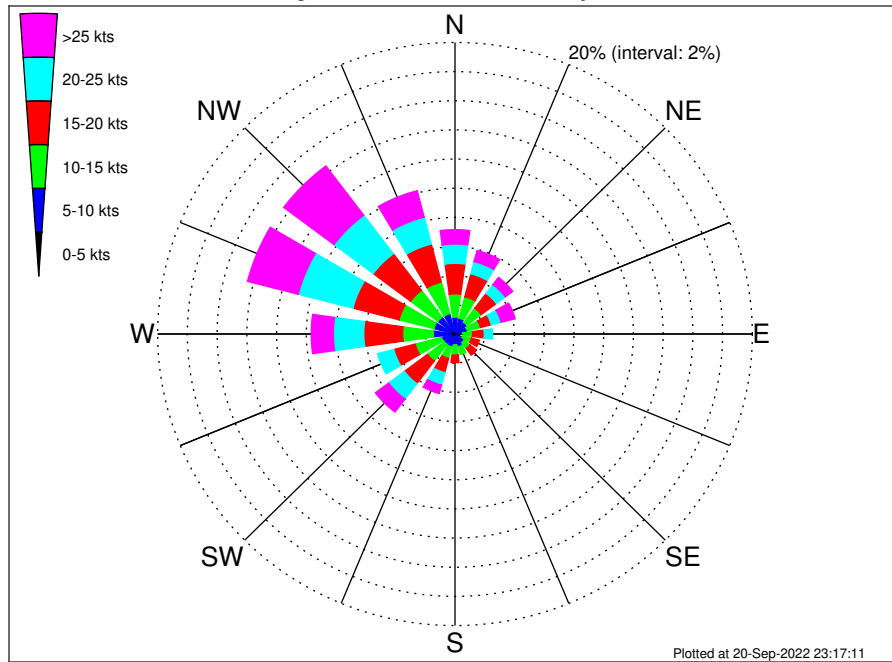
OCS-A 0537 Climatological WavePeriod Rose for February: 1979 - 2015



Joint Frequency Distribution Table

	N	NNE	NE	E	ESE	SE	SSE	S	SSW	SW	WSW	W	WNW	NW	NNW	Total	
calm	
1 - 2 sec	0.01	0.01	
2 - 4 sec	0.59	0.49	0.48	0.24	0.24	0.25	0.33	0.30	0.19	0.40	0.86	0.86	1.17	1.79	1.44	1.29	10.93
4 - 6 sec	2.18	2.20	2.26	1.55	1.02	0.76	0.64	0.43	0.74	2.59	3.13	2.08	4.42	8.13	6.17	3.27	41.59
6 - 8 sec	0.09	0.10	0.39	2.31	1.63	0.93	1.02	1.30	3.66	4.77	0.56	0.25	0.54	0.63	0.19	0.14	18.52
8 - 10 sec	.	.	.	2.60	4.57	2.30	2.06	1.86	4.66	0.73	18.77
10 - 12 sec	.	.	.	0.35	3.81	1.87	1.41	0.78	0.98	9.22
12 - 14 sec	0.16	0.56	0.06	0.01	0.80
14 - 16 sec	0.03	0.05	0.09	0.16
18 - 20 sec
22 - 24 sec
Total	2.87	2.79	3.13	7.06	11.46	6.72	5.62	4.70	10.24	8.50	4.54	3.19	6.14	10.55	7.80	4.70	100.00

OCS-A 0537 Climatological Wind Rose for February: 1979 - 2015



Joint Frequency Distribution Table

	N	NNE	NE	ENE	E	ESE	SE	SSE	S	SSW	SW	WSW	W	WNW	NW	NNW	Total
calm	0.03	•	•	0.01	0.03	•	0.03	0.03	0.01	•	•	•	0.01	0.01	0.03	•	0.18
0 - 5 kts	0.30	0.14	0.18	0.24	0.16	0.13	0.09	0.24	0.19	0.24	0.35	0.24	0.33	0.34	0.19	0.25	3.61
5 - 10 kts	0.83	0.98	0.82	0.61	0.35	0.40	0.63	0.64	0.54	0.67	0.54	0.69	1.12	1.12	1.24	1.19	12.40
10 - 15 kts	1.59	1.51	1.21	0.91	0.64	0.62	0.50	0.54	0.71	0.82	1.43	1.83	2.06	2.41	2.30	2.25	21.34
15 - 20 kts	2.10	1.63	1.28	0.76	0.78	0.54	0.57	0.38	0.52	1.01	1.94	1.49	2.61	3.21	3.14	2.69	24.64
20 - 25 kts	1.33	0.87	0.76	0.68	0.56	0.19	0.48	0.18	0.45	0.88	1.33	1.12	2.05	3.80	3.31	1.91	19.88
25 - 30 kts	0.66	0.50	0.33	0.44	0.15	0.10	0.11	0.15	0.24	0.38	0.83	0.30	0.95	2.23	3.09	1.36	11.84
30 - 35 kts	0.21	0.11	0.11	0.33	0.11	0.09	0.06	0.09	0.08	0.19	0.25	0.14	0.43	1.07	0.98	0.39	4.66
35 - 40 kts	0.08	0.11	0.05	0.11	0.03	0.03	•	0.01	0.05	0.03	0.03	•	0.10	0.19	0.14	0.09	1.04
40 - 45 kts	0.03	0.05	0.13	0.09	0.01	0.01	•	•	0.01	•	•	•	0.01	0.03	0.01	0.03	0.40
45 - 50 kts	0.01	•	•	•	•	•	•	•	•	•	•	•	•	•	•	•	0.01
Total	7.16	5.92	4.86	4.18	2.83	2.11	2.47	2.26	2.80	4.22	6.70	5.82	9.67	14.42	14.43	10.15	100.00