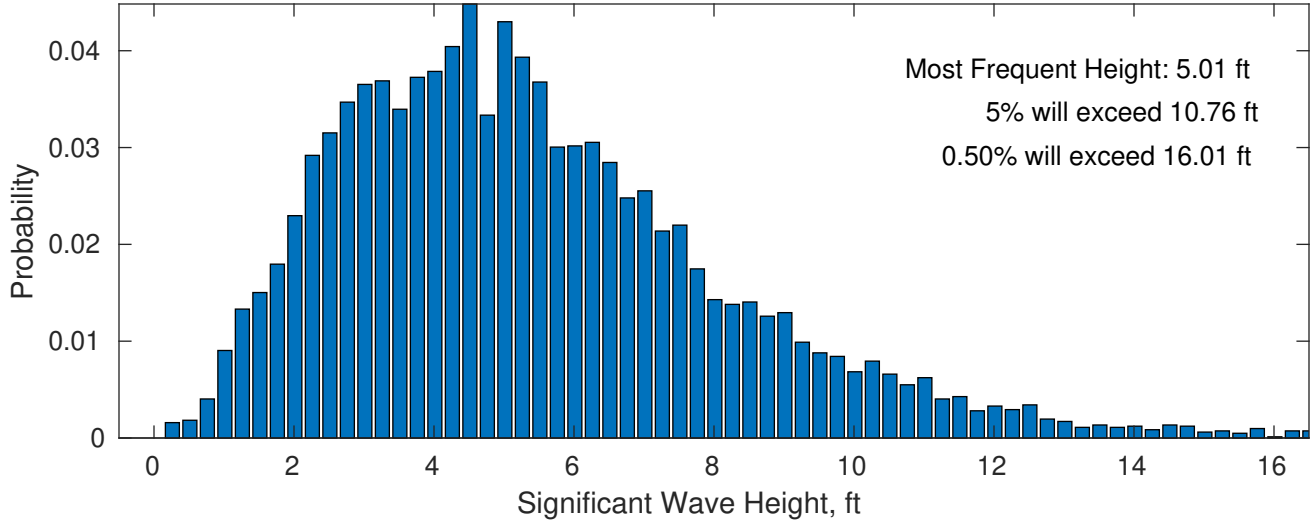
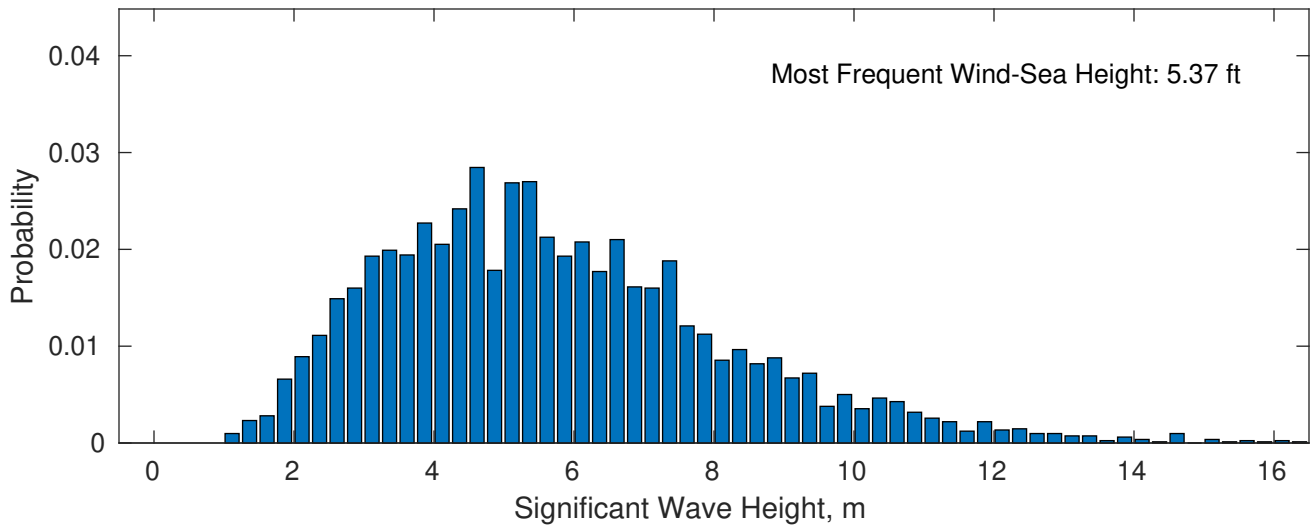


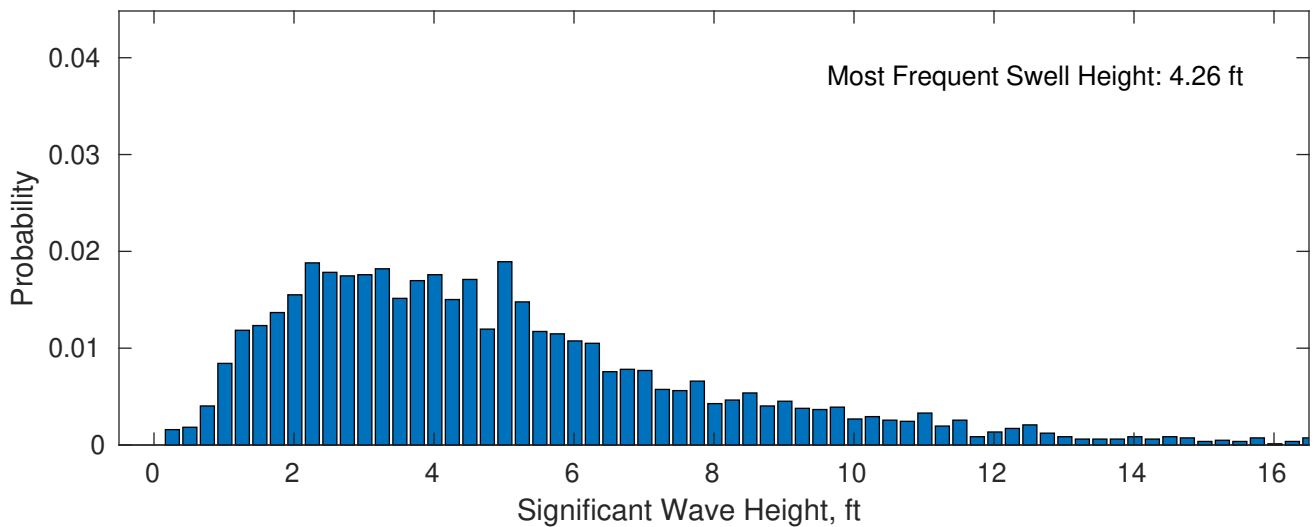
January Wave Height PDF: 1979 - 2015



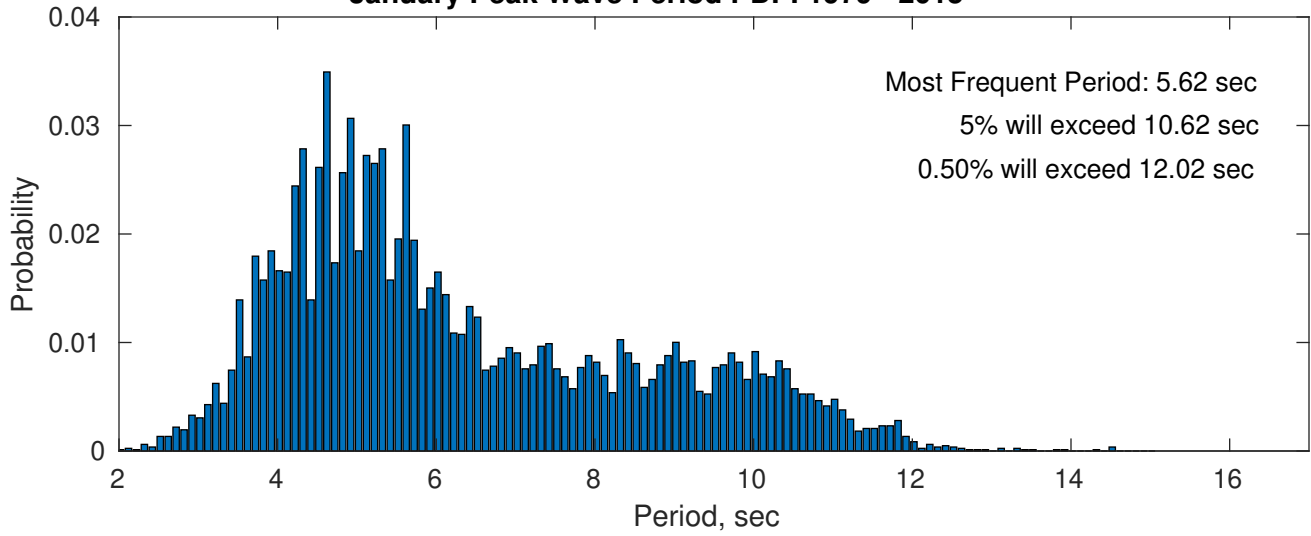
Wind-Sea: 55.69%



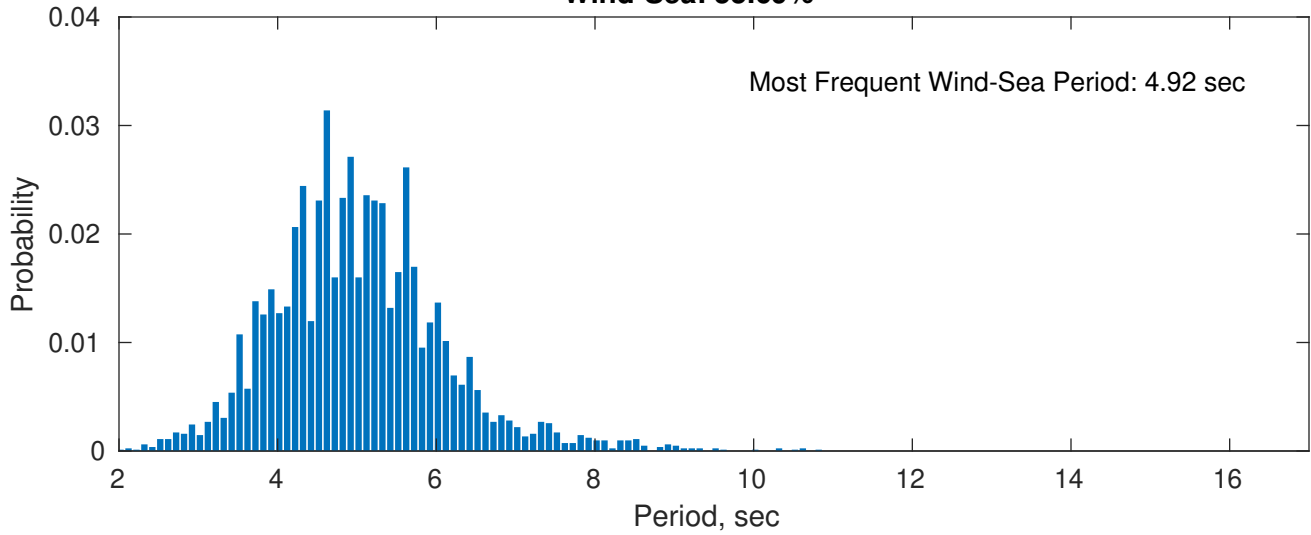
Swell: 44.31%



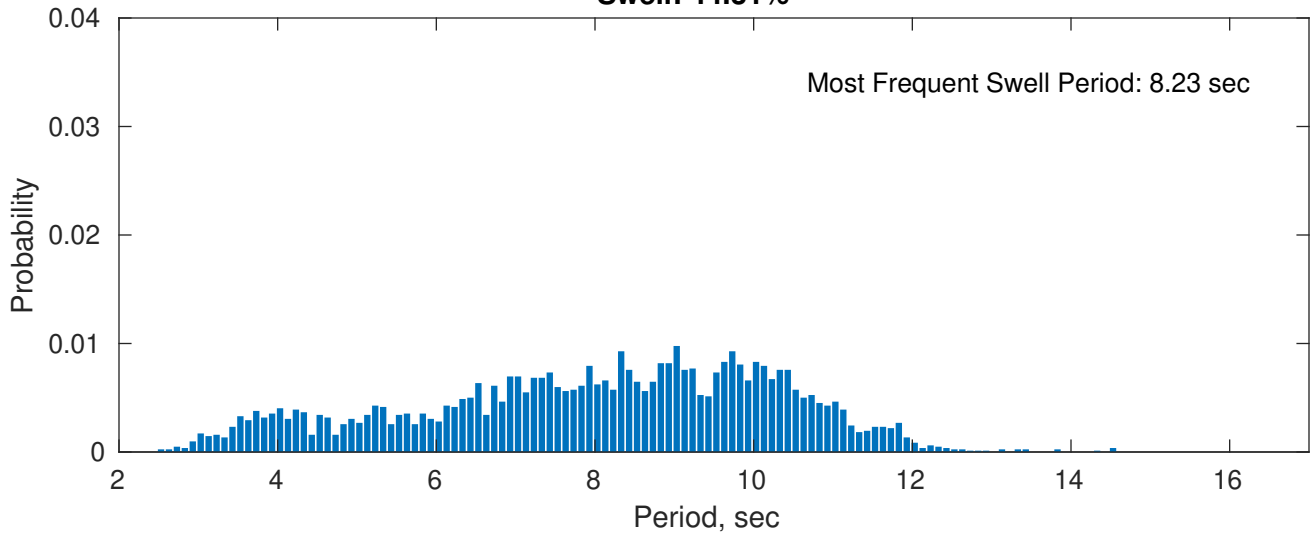
January Peak Wave Period PDF: 1979 - 2015



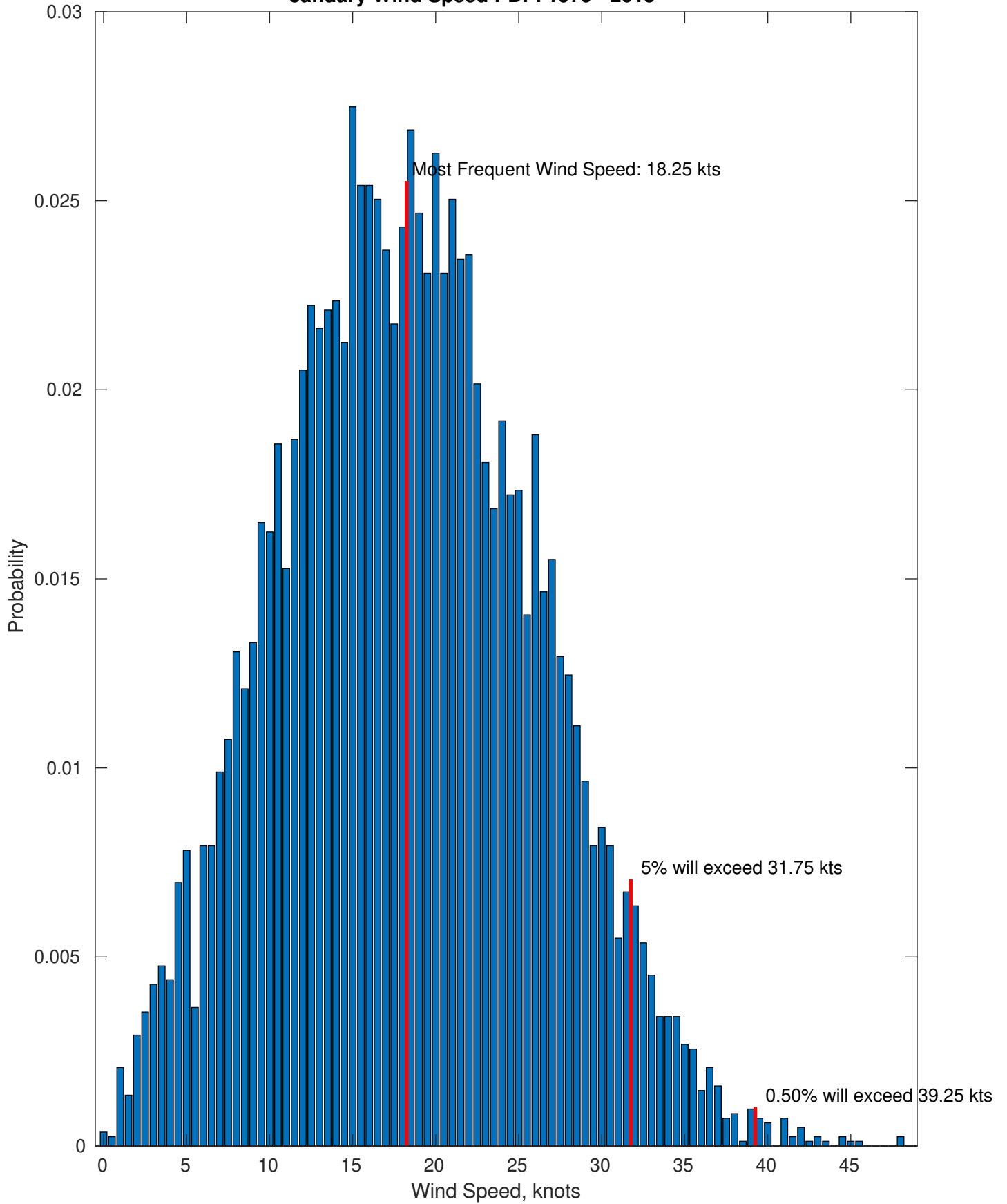
Wind-Sea: 55.69%



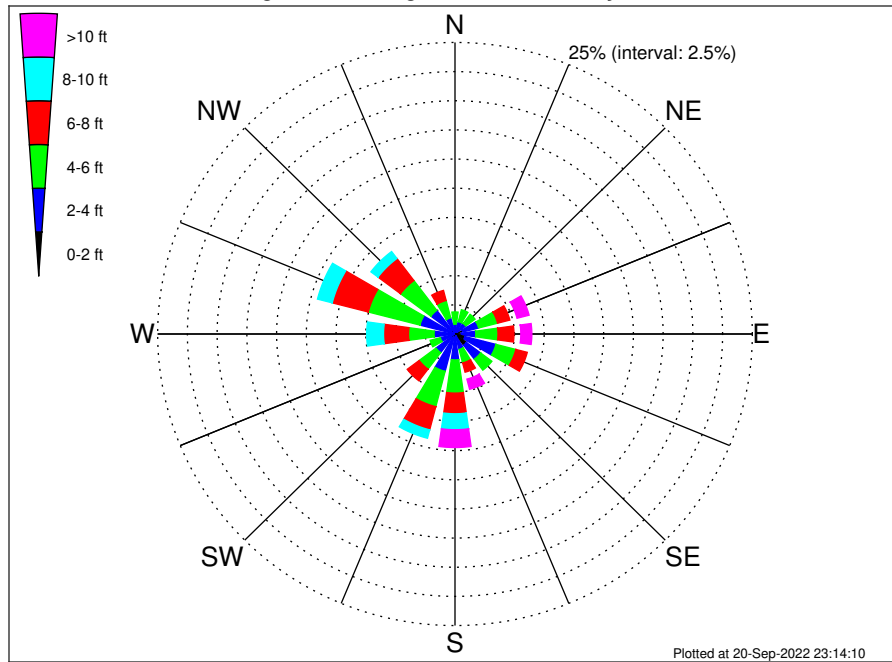
Swell: 44.31%



January Wind Speed PDF: 1979 - 2015



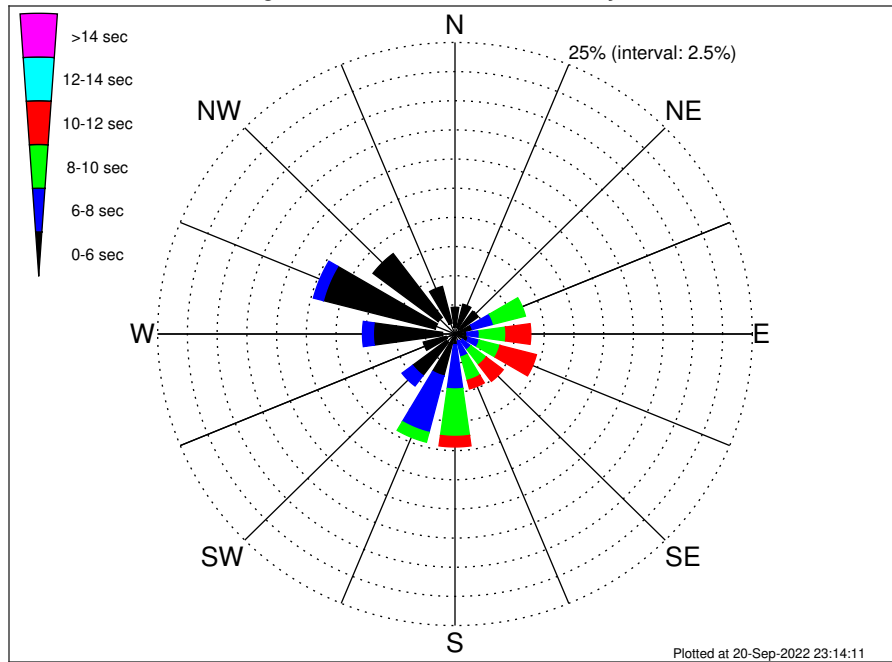
OCS-A 0537 Climatological WaveHeight Rose for January: 1979 - 2015



Joint Frequency Distribution Table

	N	NNE	NE	ENE	E	ESE	SE	SSE	S	SSW	SW	WSW	W	WNW	NW	NNW	Total
calm	0.02	0.01	0.01	0.15	0.16	0.06	0.22	•	0.01	•	0.06	•	•	•	0.01	0.02	0.75
1 - 2 ft	0.12	0.27	0.22	0.54	0.38	0.79	0.98	0.18	0.31	0.29	0.32	0.06	0.06	0.23	0.37	0.17	5.29
2 - 4 ft	0.70	0.82	0.90	1.37	1.21	2.70	1.50	1.18	1.91	3.02	1.62	1.21	1.70	2.81	2.16	1.23	26.04
4 - 6 ft	1.05	1.05	0.98	1.65	1.87	1.73	1.18	1.20	2.85	3.13	1.77	0.89	2.15	4.49	3.20	1.54	30.73
6 - 8 ft	0.35	0.48	0.42	1.06	1.34	0.99	0.51	0.82	1.77	2.05	1.26	0.56	2.10	3.13	2.37	0.89	20.11
8 - 10 ft	0.07	0.05	0.24	0.62	0.57	0.51	0.32	0.61	1.37	0.75	0.37	0.31	1.42	1.28	0.75	0.43	9.66
10 - 12 ft	0.02	•	0.10	0.53	0.54	0.21	0.26	0.38	0.75	0.33	0.17	0.12	0.32	0.33	0.29	0.13	4.47
12 - 14 ft	0.01	•	•	0.33	0.28	0.10	0.17	0.28	0.34	0.05	0.01	0.01	0.04	0.02	0.04	0.02	1.71
14 - 16 ft	•	•	0.01	0.17	0.05	0.07	0.05	0.16	0.23	•	•	•	•	•	•	•	0.75
16 - 18 ft	•	•	•	0.02	0.04	0.05	0.02	0.02	0.18	•	•	•	•	•	•	•	0.34
> 18 ft	•	•	•	•	0.02	0.04	0.01	0.06	0.02	•	•	•	•	•	•	•	0.16
Total	2.36	2.67	2.88	6.44	6.46	7.26	5.23	4.90	9.73	9.61	5.58	3.16	7.78	12.30	9.19	4.45	100.00

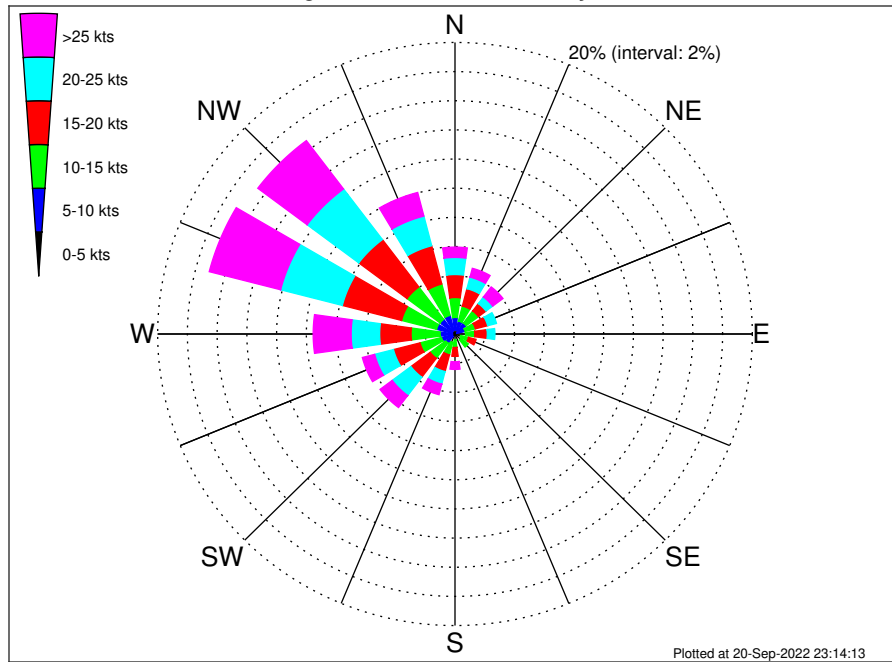
OCS-A 0537 Climatological WavePeriod Rose for January: 1979 - 2015



Joint Frequency Distribution Table

	N	NNE	NE	ENE	E	ESE	SE	SSE	S	SSW	SW	WSW	W	WNW	NW	NNW	Total
calm
1 - 2 sec
2 - 4 sec	0.60	0.57	0.54	0.32	0.28	0.31	0.24	0.21	0.20	0.38	0.90	0.77	1.05	1.71	1.77	0.96	10.81
4 - 6 sec	1.70	2.06	1.92	1.20	0.73	0.84	0.53	0.43	0.72	3.33	3.57	1.99	5.81	9.72	6.86	3.25	44.67
6 - 8 sec	0.06	0.04	0.43	1.83	1.04	0.96	0.90	1.39	3.80	5.01	1.11	0.40	0.92	0.87	0.55	0.23	19.54
8 - 10 sec	.	.	.	2.77	2.24	1.80	1.62	2.08	4.07	0.87	15.44
10 - 12 sec	.	.	.	0.32	2.09	3.16	1.78	0.76	0.90	0.02	9.04
12 - 14 sec	0.09	0.16	0.12	0.04	0.05	0.45
14 - 16 sec	0.02	0.02	0.05
18 - 20 sec
22 - 24 sec
Total	2.36	2.67	2.88	6.44	6.46	7.26	5.23	4.90	9.73	9.61	5.58	3.16	7.78	12.30	9.19	4.45	100.00

OCS-A 0537 Climatological Wind Rose for January: 1979 - 2015



Joint Frequency Distribution Table

	N	NNE	NE	ENE	E	ESE	SE	SSE	S	SSW	SW	WSW	W	WNW	NW	NNW	Total
calm	•	0.01	•	•	0.01	•	•	0.01	•	0.01	•	•	•	0.01	•	•	0.06
0 - 5 kts	0.31	0.26	0.26	0.13	0.21	0.10	0.15	0.07	0.13	0.13	0.21	0.24	0.17	0.18	0.22	0.26	3.03
5 - 10 kts	0.83	0.65	0.68	0.57	0.49	0.33	0.34	0.37	0.29	0.45	0.57	0.70	0.83	1.09	1.04	1.06	10.30
10 - 15 kts	1.37	1.06	1.04	0.71	0.62	0.51	0.64	0.37	0.50	0.88	1.31	1.49	1.95	2.43	2.78	2.22	19.89
15 - 20 kts	1.58	1.23	0.64	0.86	0.84	0.53	0.43	0.40	0.61	1.18	1.62	1.84	2.11	4.12	4.07	2.71	24.77
20 - 25 kts	1.17	0.82	0.56	0.61	0.51	0.33	0.18	0.31	0.37	0.89	1.58	1.31	1.92	4.29	4.35	2.10	21.29
25 - 30 kts	0.45	0.29	0.37	0.21	0.33	0.18	0.23	0.34	0.27	0.51	0.81	0.68	1.61	3.26	2.71	1.18	13.45
30 - 35 kts	0.15	0.20	0.27	0.13	0.12	0.07	0.04	0.09	0.10	0.17	0.15	0.13	0.83	1.49	1.20	0.38	5.51
35 - 40 kts	0.11	0.07	0.16	0.09	0.01	0.02	0.01	0.02	0.10	0.05	0.06	0.04	0.10	0.18	0.24	0.11	1.38
40 - 45 kts	•	0.06	0.05	0.04	0.01	•	0.01	•	0.05	0.01	0.01	•	0.01	0.02	•	•	0.28
45 - 50 kts	•	•	0.02	0.01	•	•	•	•	0.01	•	•	•	•	•	•	•	0.05
Total	5.96	4.65	4.04	3.36	3.16	2.08	2.03	1.98	2.43	4.30	6.31	6.44	9.54	17.08	16.61	10.03	100.00