

OCS-A 0537 - July

Latitude: 39.96 N Longitude: 72.73 W

Weather Days

Wave Height > 3.0 ft Mean: 19.2 days Range: 15.8 - 22.7 days p50:20 days p75:16.5 days p90:15 days

Wave Height > 4.0 ft Mean: 10.3 days Range: 6.6 - 14.0 days p50:10.5 days p75:7 days p90:5.5 days

Wave Height > 5.0 ft Mean: 4.7 days Range: 2.2 - 7.3 days p50:4.5 days p75:2.5 days p90:1.5 days

Wind Speed > 20.0 knots Mean: 2.1 days Range: 1.0 - 3.3 days p50:2.5 days p75:1.5 days p90:1 days

Wind Speed > 25.0 knots Mean: 0.3 days Range: 0.0 - 0.6 days p50:0.5 days p75:0.5 days p90:0.5 days

Wind Speed > 30.0 knots Mean: 0.0 days Range: 0.0 - 0.1 days p50:0.5 days p75:0.5 days p90:0.5 days

Working Window Probability

Wave Height < 3.0 ft
3 days or longer: 19%
5 days or longer: 1%
7 days or longer: 0%

Wave Height < 4.0 ft
3 days or longer: 41%
5 days or longer: 10%
7 days or longer: 5%

Wave Height < 5.0 ft
3 days or longer: 62%
5 days or longer: 26%
7 days or longer: 17%

Waves

Mean Height: 2 - 4 ft

The wave heights will occasionally reach 8 - 10 ft, but rarely higher.

Mean Period: 6 - 8 sec

The wave periods will occasionally reach 12 - 14 sec, but rarely longer.

Principle Direction, from: S

WindSea/Swell: 21% / 79%

Winds

Mean Speed: 10 - 15 kts

The winds will occasionally reach 25 - 30 kts, but rarely greater.

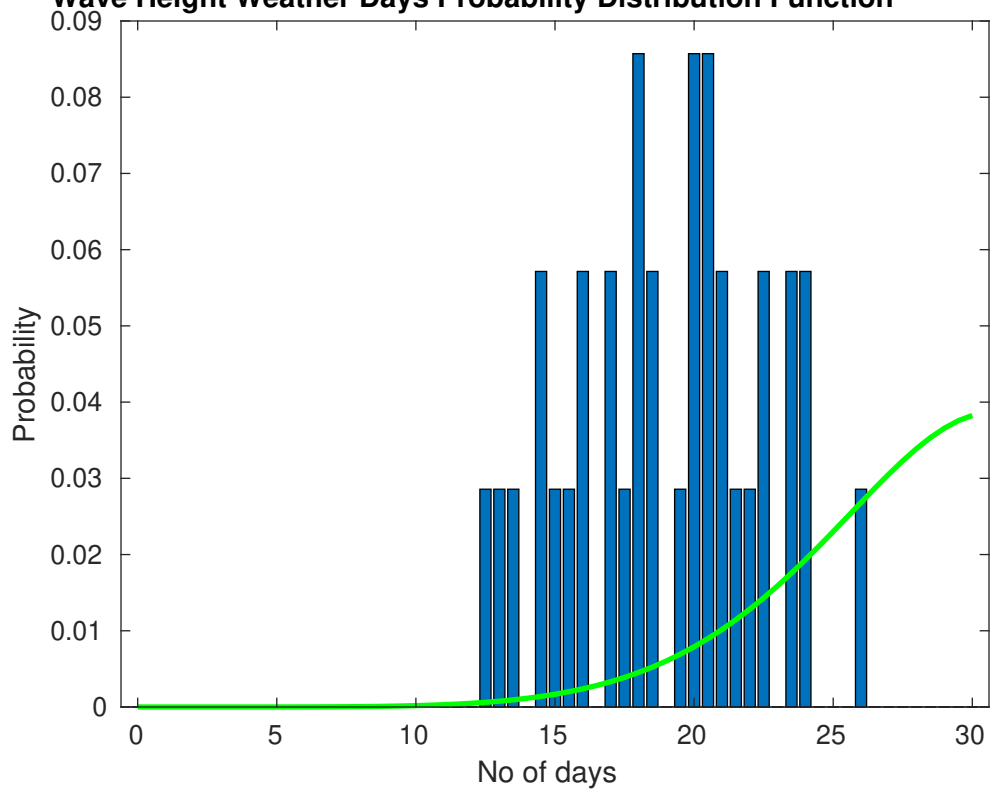
Principle Direction, from: SW

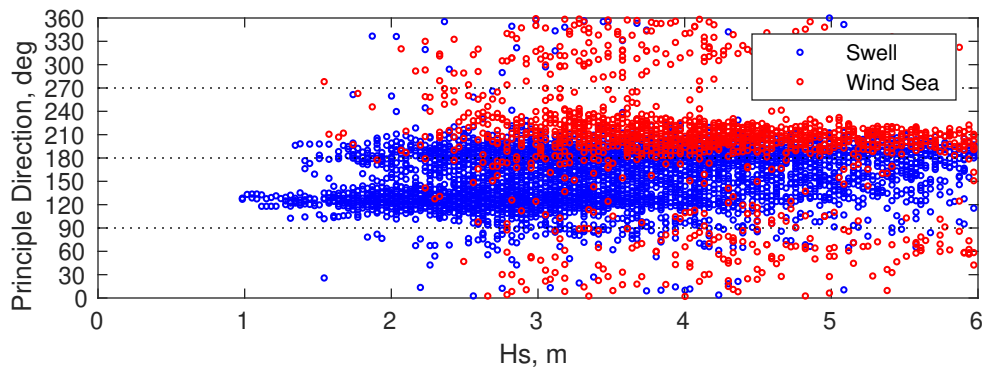
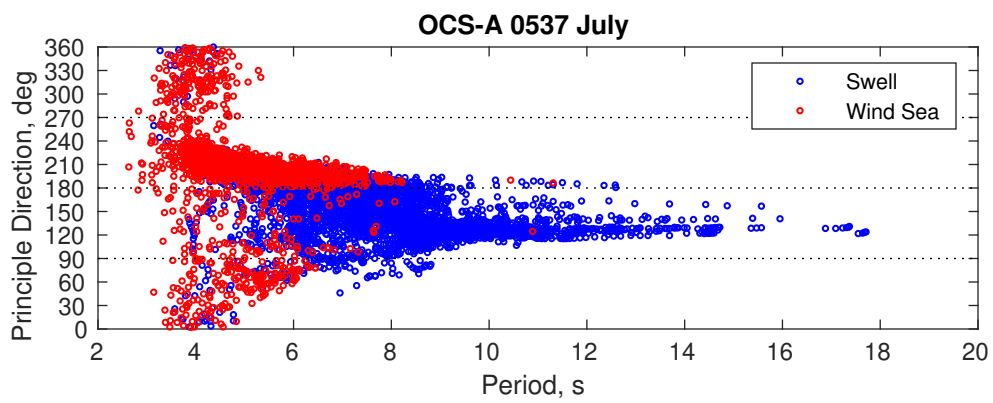
Severe Storms

There is a 3 % chance of a storm occurring in the month with winds peaking above 34 kts.

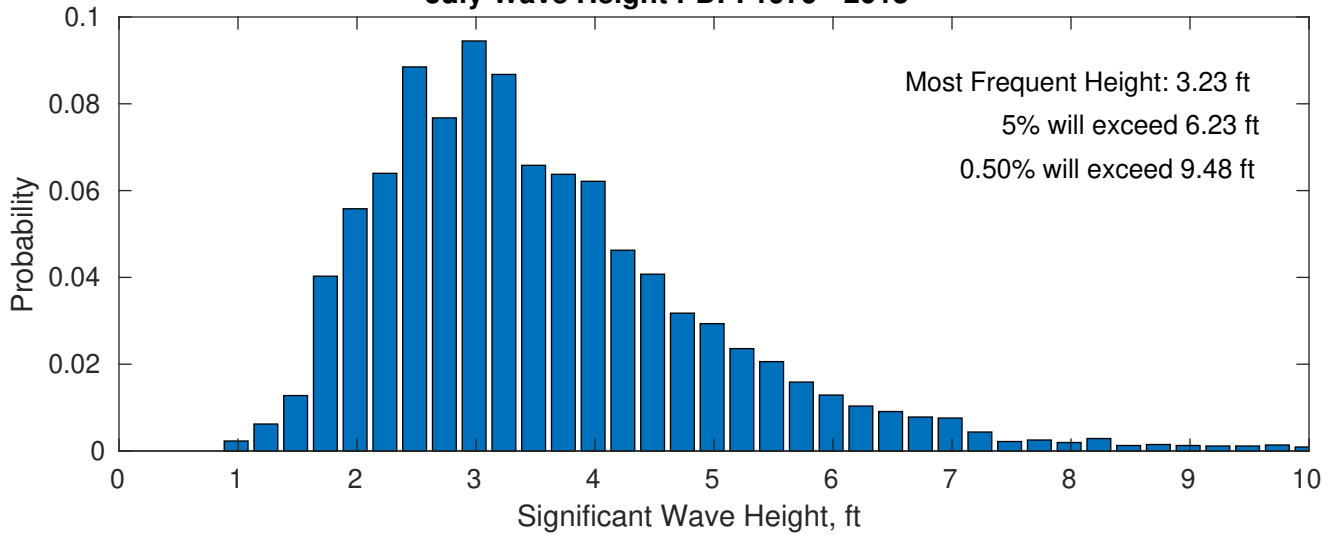
There is little chance of a storm occurring in the month with waves peaking at 4m (13 ft) or greater.

Wave Height Weather Days Probability Distribution Function

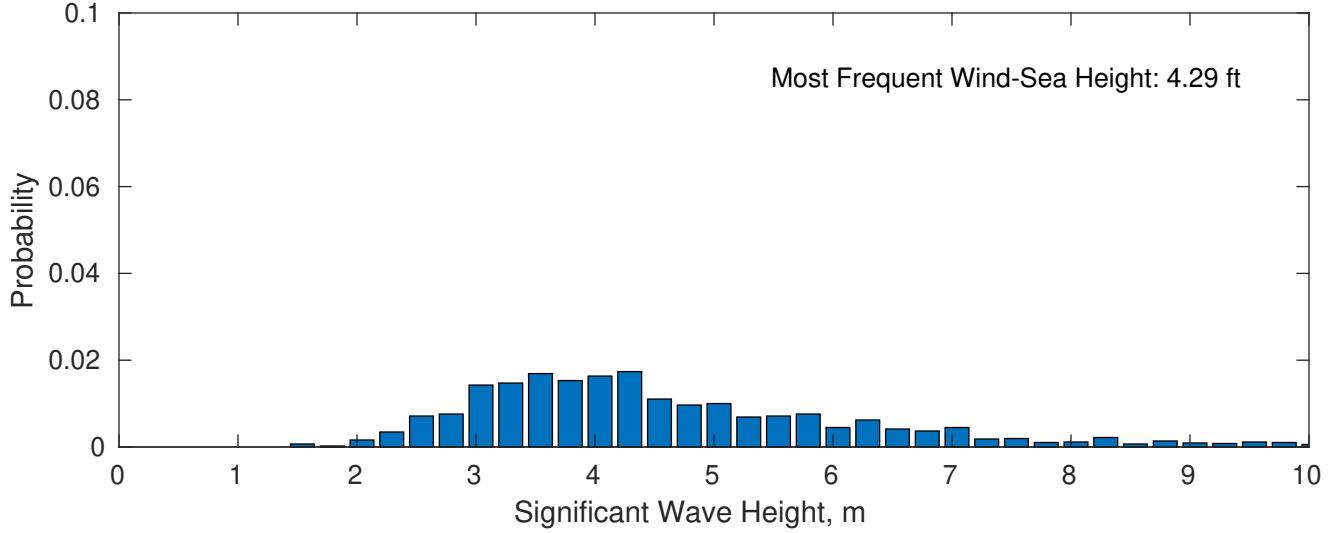




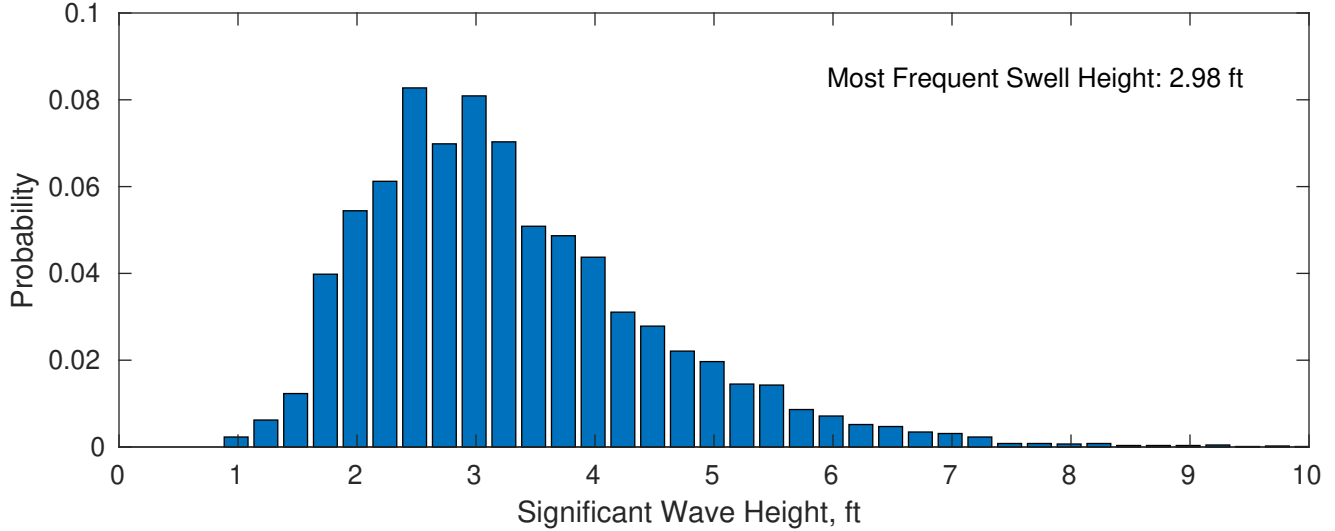
July Wave Height PDF: 1979 - 2015



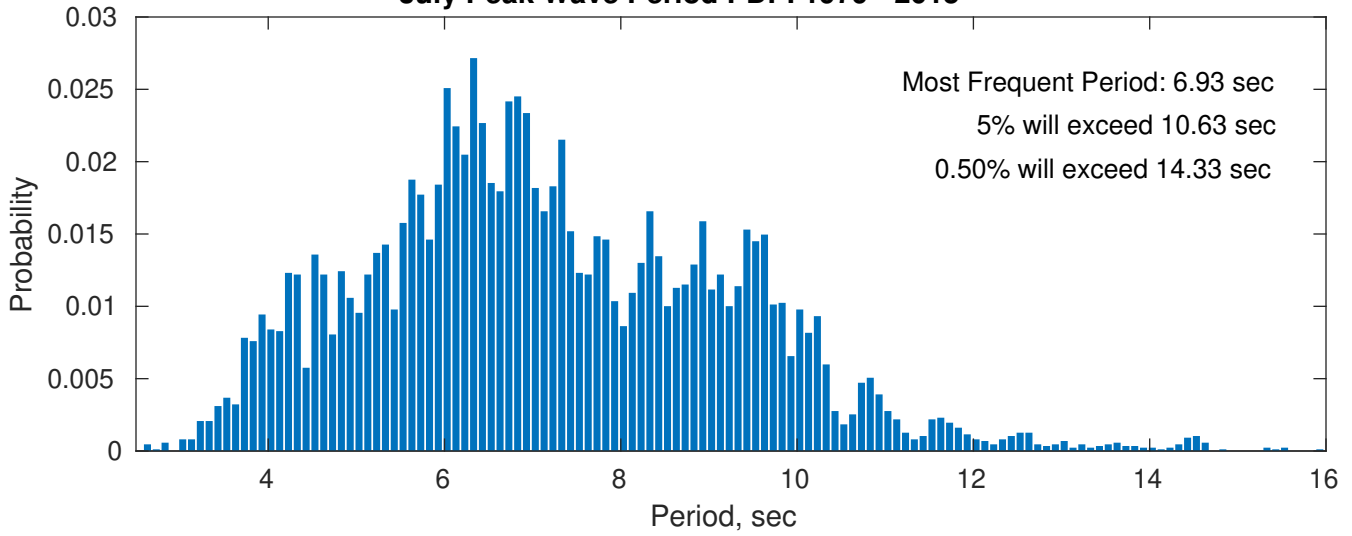
Wind-Sea: 20.69%



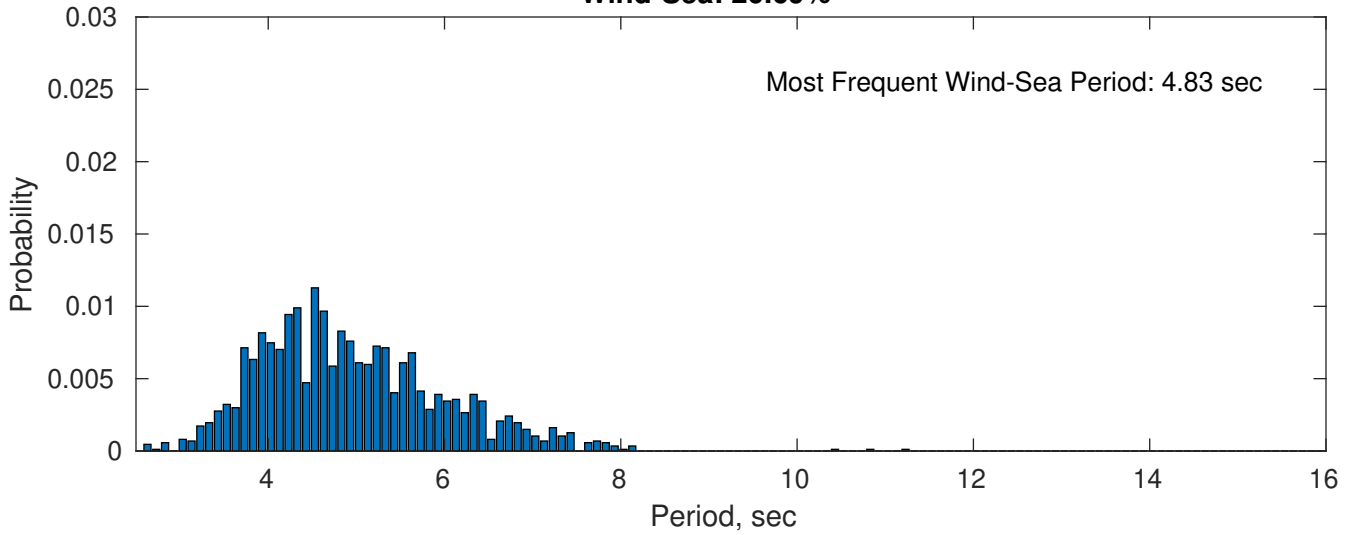
Swell: 79.31%



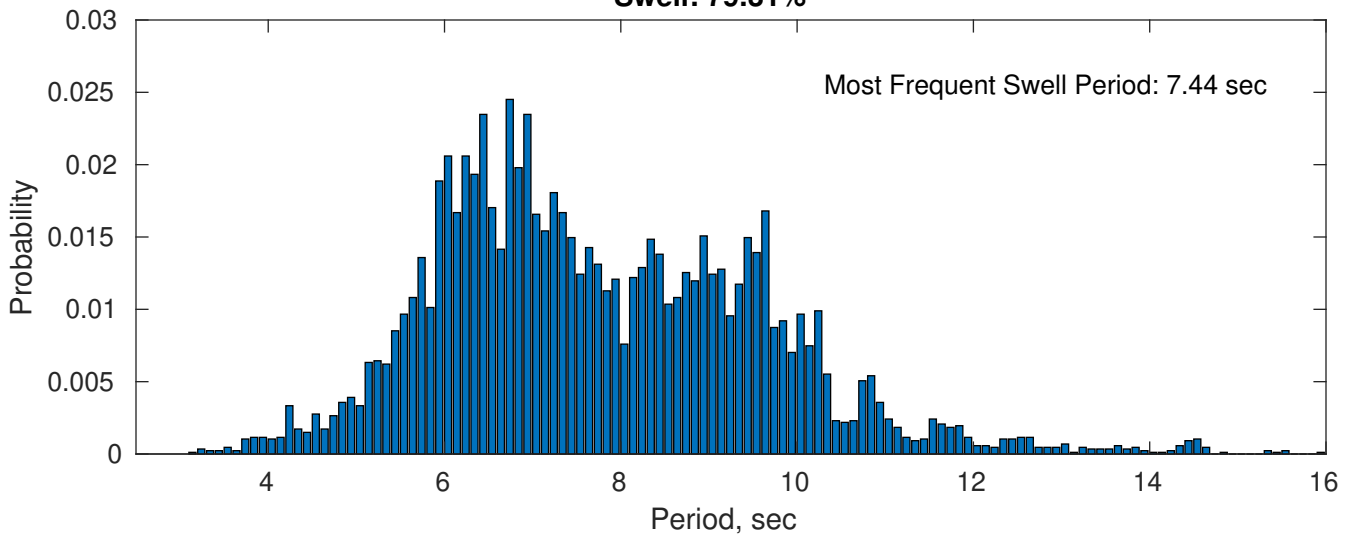
July Peak Wave Period PDF: 1979 - 2015



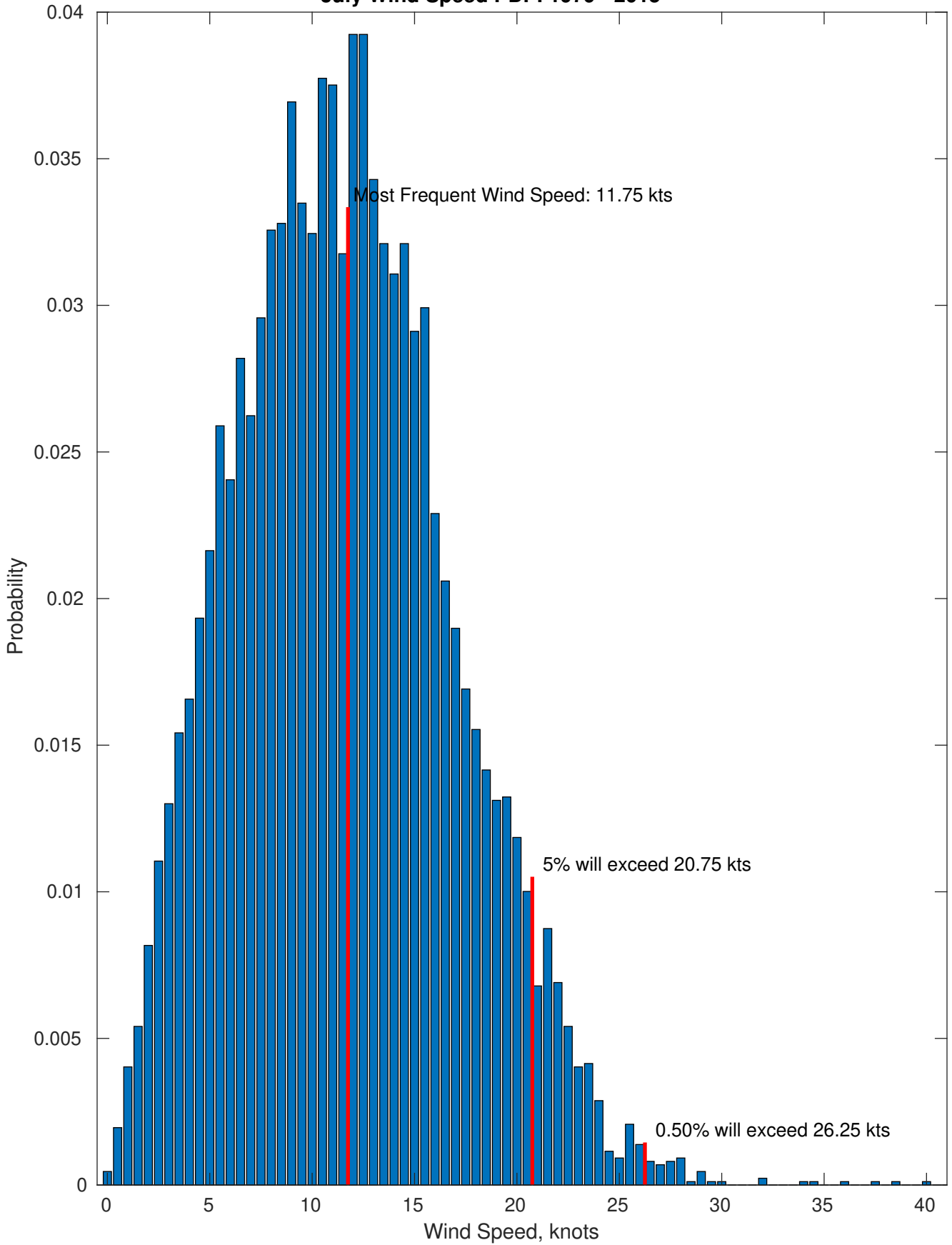
Wind-Sea: 20.69%



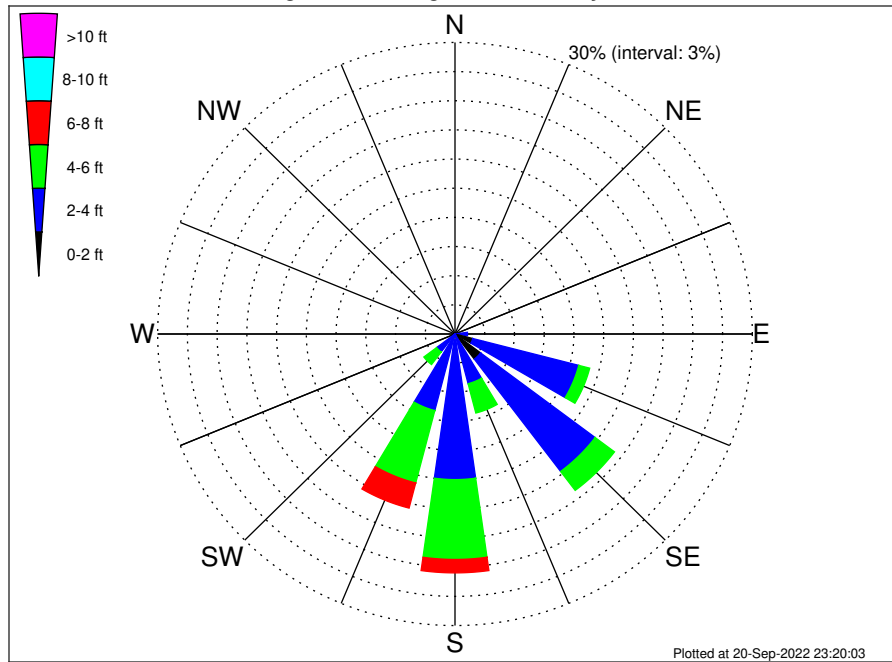
Swell: 79.31%



July Wind Speed PDF: 1979 - 2015



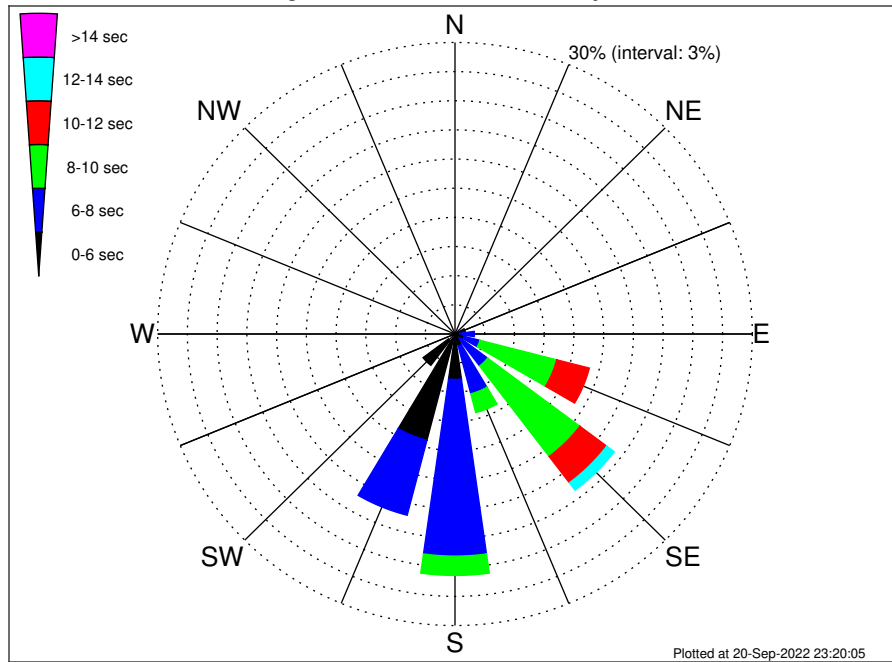
OCS-A 0537 Climatological WaveHeight Rose for July: 1979 - 2015



Joint Frequency Distribution Table

	N	NNE	NE	ENE	E	ESE	SE	SSE	S	SSW	SW	WSW	W	WNW	NW	NNW	Total
calm	•	•	•	•	•	•	0.02	•	•	•	•	•	•	•	•	•	0.02
1 - 2 ft	•	0.01	•	0.02	0.01	1.85	3.21	0.10	0.59	0.28	•	0.01	0.03	•	•	0.01	6.13
2 - 4 ft	0.37	0.24	0.21	0.41	1.25	11.05	14.48	5.18	14.40	7.86	2.32	0.52	0.22	0.31	0.46	0.31	59.59
4 - 6 ft	0.18	0.17	0.23	0.74	0.72	1.14	2.44	3.12	8.22	7.70	1.61	0.05	0.10	0.10	0.32	0.18	27.03
6 - 8 ft	0.01	•	0.07	0.25	0.25	0.22	0.31	0.33	1.38	2.67	0.15	•	•	•	0.02	0.01	5.68
8 - 10 ft	•	•	0.01	•	0.03	0.03	0.06	0.07	0.37	0.67	0.01	•	•	•	•	•	1.25
10 - 12 ft	•	•	0.01	0.01	0.01	•	•	0.01	0.03	0.16	•	•	•	•	•	•	0.24
12 - 14 ft	•	•	•	•	•	•	•	•	•	•	•	•	•	•	•	•	•
14 - 16 ft	•	•	•	•	•	•	•	•	0.01	•	•	•	•	•	•	•	0.01
16 - 18 ft	•	•	•	•	•	•	•	•	0.01	•	•	•	•	•	•	•	0.01
> 18 ft	•	•	•	•	•	•	•	•	0.02	•	•	•	•	•	•	•	0.02
Total	0.56	0.43	0.53	1.44	2.29	14.29	20.52	8.81	25.03	19.33	4.10	0.58	0.36	0.41	0.81	0.52	100.00

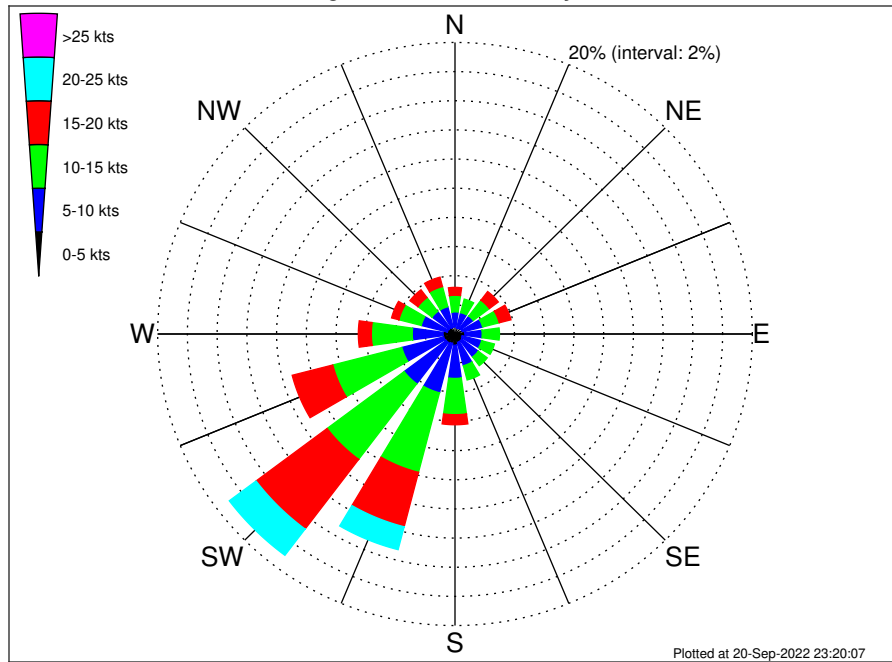
OCS-A 0537 Climatological WavePeriod Rose for July: 1979 - 2015



Joint Frequency Distribution Table

	N	NNE	NE	ENE	E	ESE	SE	SSE	S	SSW	SW	WSW	W	WNW	NW	NNW	Total
calm
1 - 2 sec
2 - 4 sec	0.29	0.17	0.13	0.07	0.09	0.09	0.12	0.08	0.12	0.49	0.83	0.39	0.24	0.25	0.38	0.25	3.99
4 - 6 sec	0.28	0.25	0.38	0.99	0.45	0.84	0.51	1.20	4.56	10.79	3.21	0.18	0.12	0.16	0.43	0.26	24.60
6 - 8 sec	.	.	0.02	0.28	1.42	1.67	3.50	5.07	18.18	7.97	0.06	38.17
8 - 10 sec	.	.	.	0.10	0.33	8.00	11.66	2.00	1.99	0.07	24.15
10 - 12 sec	3.41	3.39	0.39	0.15	7.34
12 - 14 sec	0.14	0.96	0.03	0.03	1.16
14 - 16 sec	0.10	0.30	0.03	0.44
18 - 20 sec	0.05	0.09	0.14
22 - 24 sec
Total	0.56	0.43	0.53	1.44	2.29	14.29	20.52	8.81	25.03	19.33	4.10	0.58	0.36	0.41	0.81	0.52	100.00

OCS-A 0537 Climatological Wind Rose for July: 1979 - 2015



Joint Frequency Distribution Table

	N	NNE	NE	ENE	E	ESE	SE	SSE	S	SSW	SW	WSW	W	WNW	NW	NNW	Total
calm	0.01	0.01	•	0.02	0.01	•	0.01	0.05	0.01	0.01	0.02	0.02	0.01	0.01	0.01	0.02	0.24
0 - 5 kts	0.48	0.40	0.48	0.49	0.66	0.51	0.56	0.55	0.76	0.66	0.71	0.76	0.79	0.52	0.51	0.45	9.30
5 - 10 kts	1.02	1.10	1.06	1.40	1.16	1.35	1.39	1.65	2.28	3.50	3.54	2.91	2.07	1.82	1.42	1.46	29.14
10 - 15 kts	1.14	0.96	1.36	1.15	1.16	0.89	0.75	1.01	2.49	5.64	6.49	4.80	2.75	1.55	1.20	1.43	34.75
15 - 20 kts	0.54	0.39	0.75	0.82	0.33	0.20	0.09	0.26	0.69	3.86	5.98	2.82	0.87	0.51	0.67	0.67	19.45
20 - 25 kts	0.15	0.16	0.24	0.20	0.15	0.06	0.07	0.09	0.17	1.62	2.26	0.40	0.13	0.09	0.23	0.17	6.19
25 - 30 kts	•	•	0.02	0.05	•	0.01	0.02	0.01	•	0.33	0.28	0.03	•	•	0.06	0.01	0.83
30 - 35 kts	0.01	•	0.01	•	0.01	•	0.01	•	•	•	•	0.01	•	•	•	•	0.06
35 - 40 kts	0.01	•	•	•	•	•	•	•	0.01	•	0.01	•	•	•	•	•	0.03
40 - 45 kts	0.01	•	•	•	•	•	•	•	•	•	•	•	•	•	•	•	0.01
45 - 50 kts	•	•	•	•	•	•	•	•	•	•	•	•	•	•	•	•	•
Total	3.38	3.03	3.92	4.13	3.49	3.00	2.91	3.62	6.41	15.62	19.30	11.76	6.63	4.50	4.09	4.21	100.00