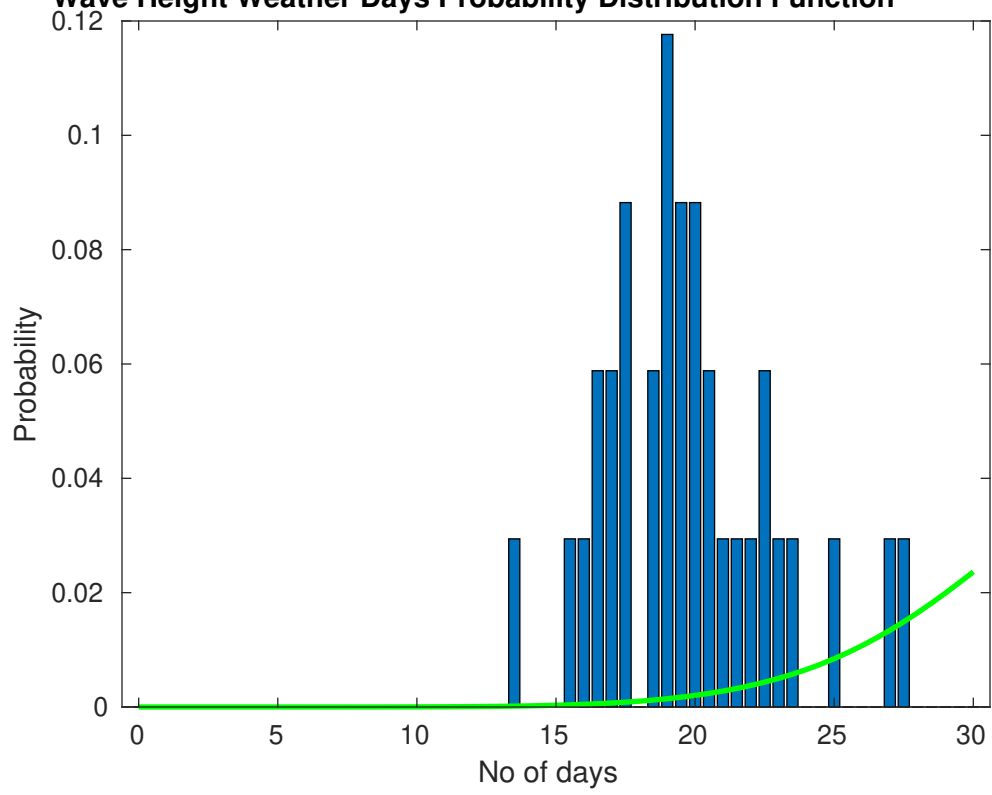
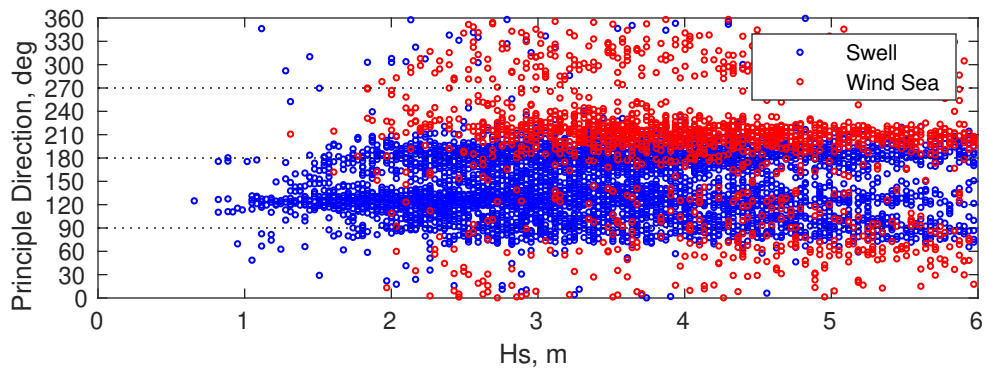
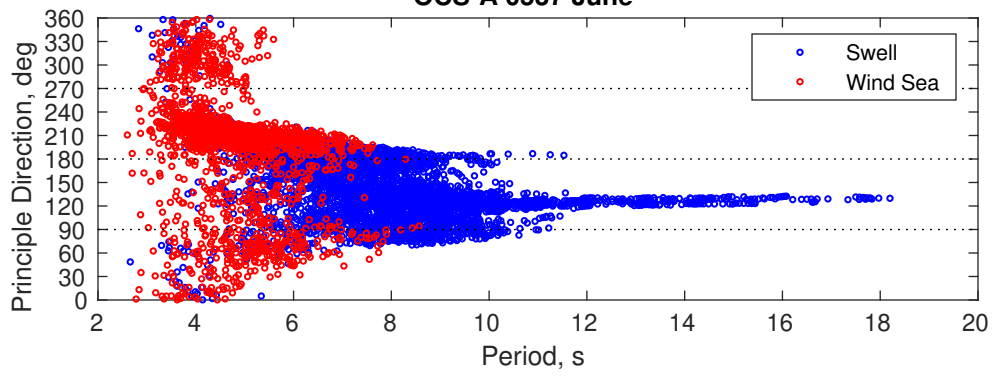




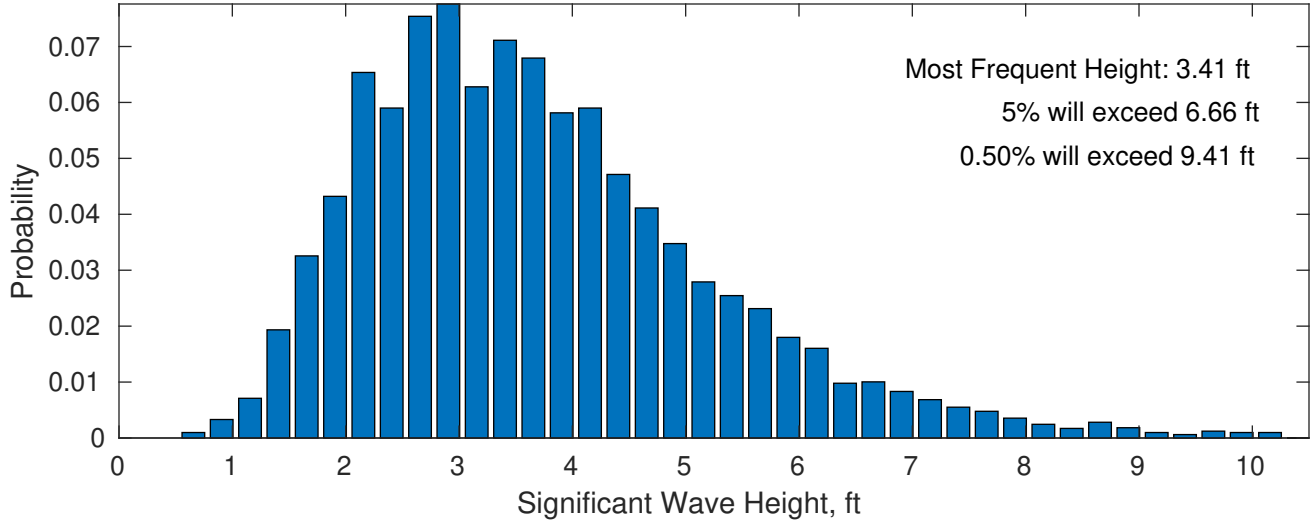
**Wave Height Weather Days Probability Distribution Function**



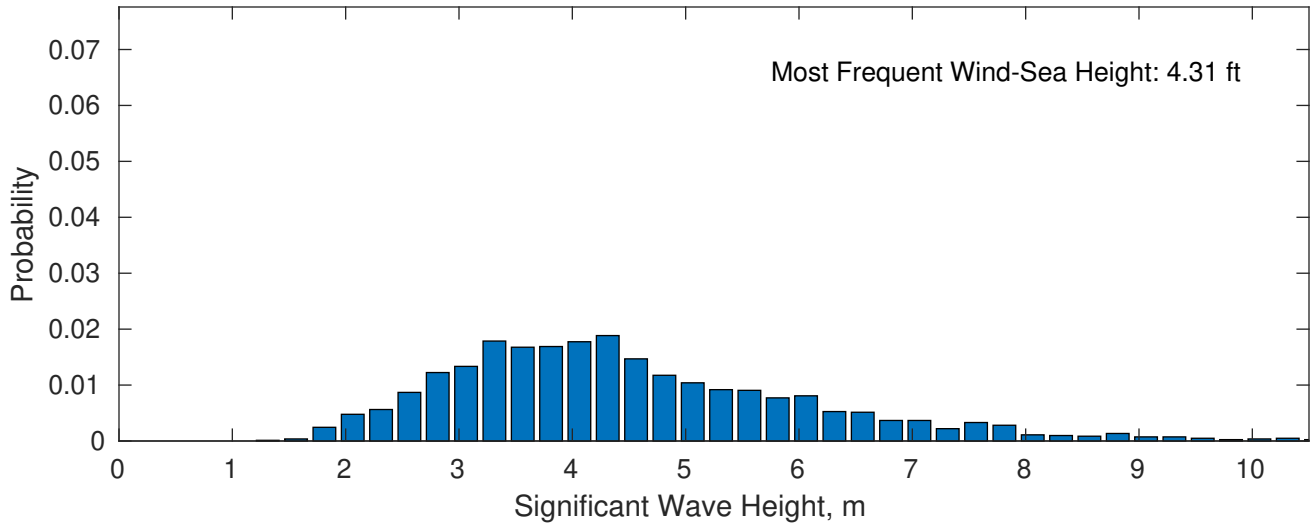
OCS-A 0537 June



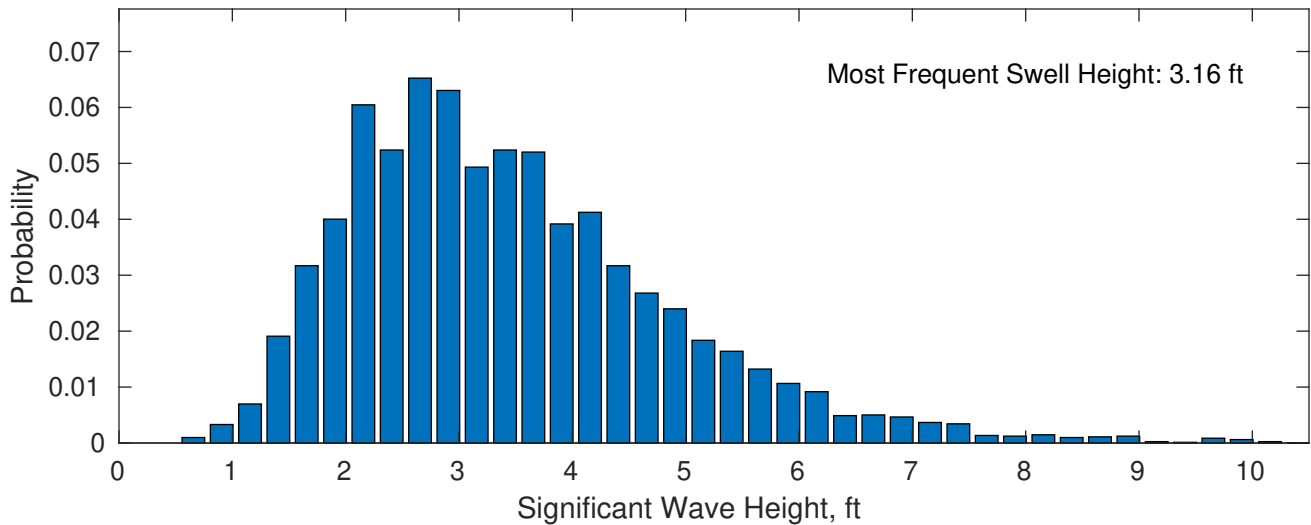
**June Wave Height PDF: 1979 - 2015**



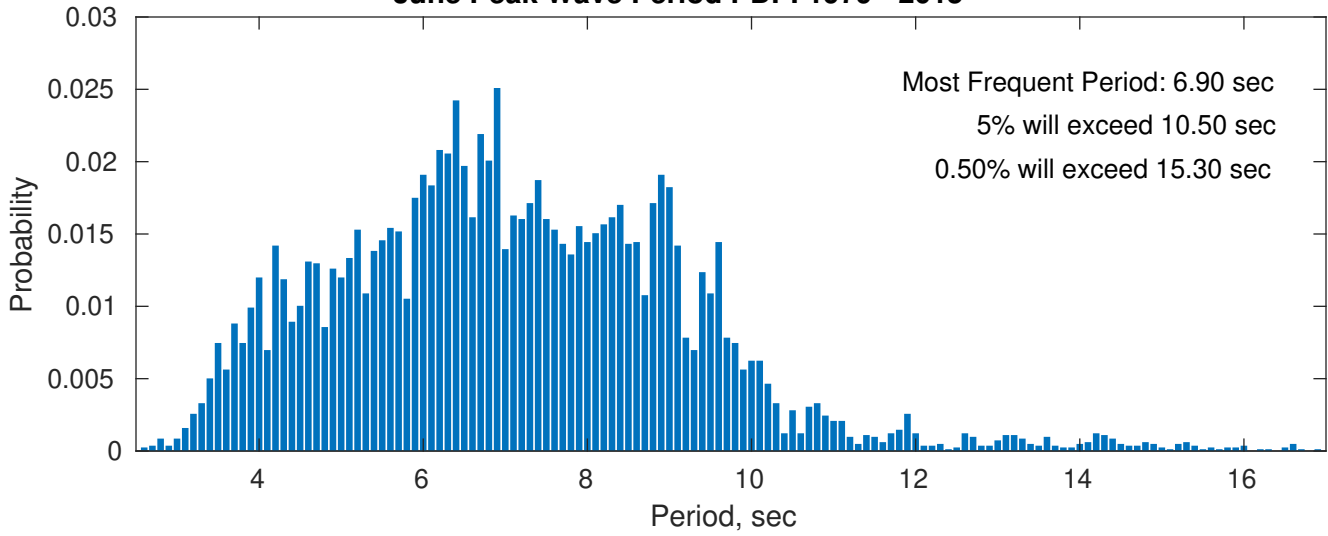
**Wind-Sea: 24.08%**



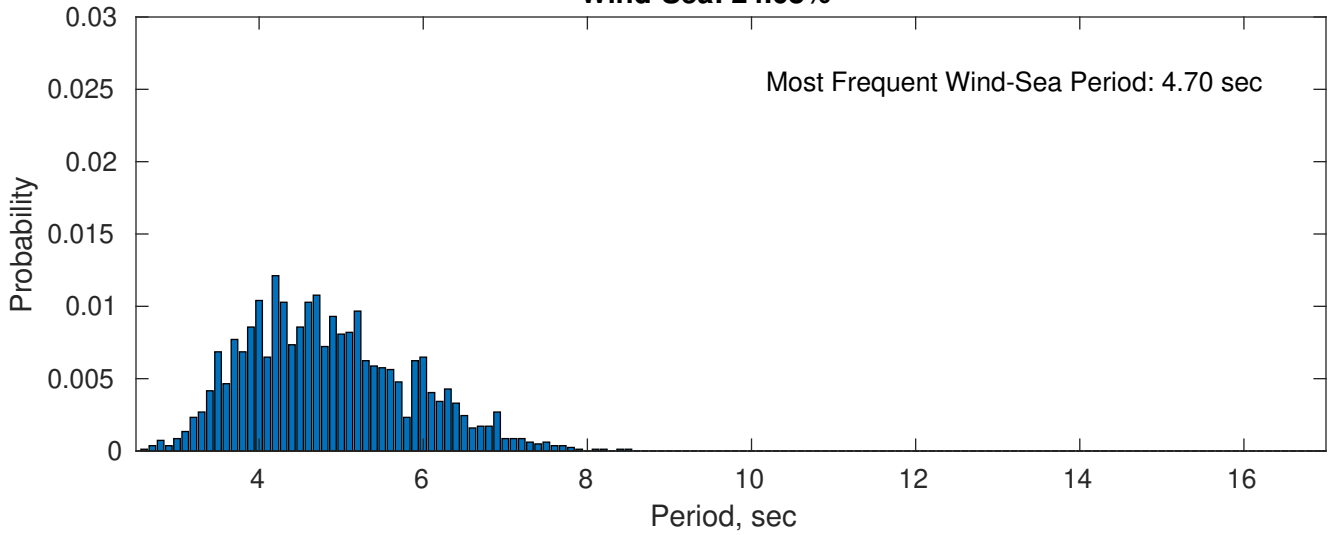
**Swell: 75.92%**



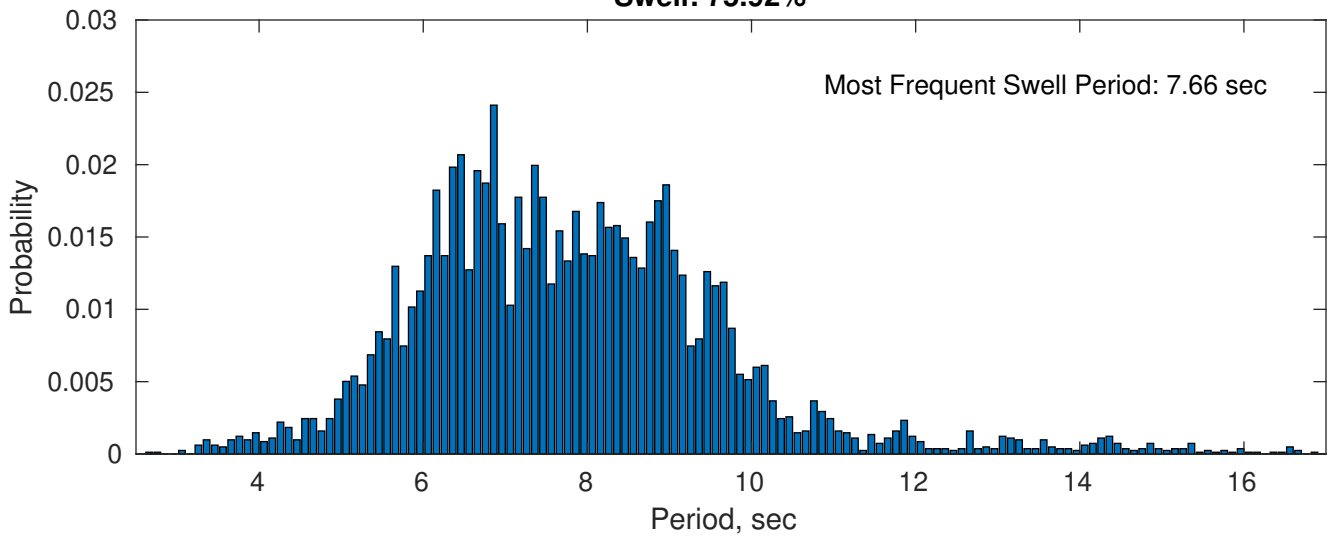
**June Peak Wave Period PDF: 1979 - 2015**



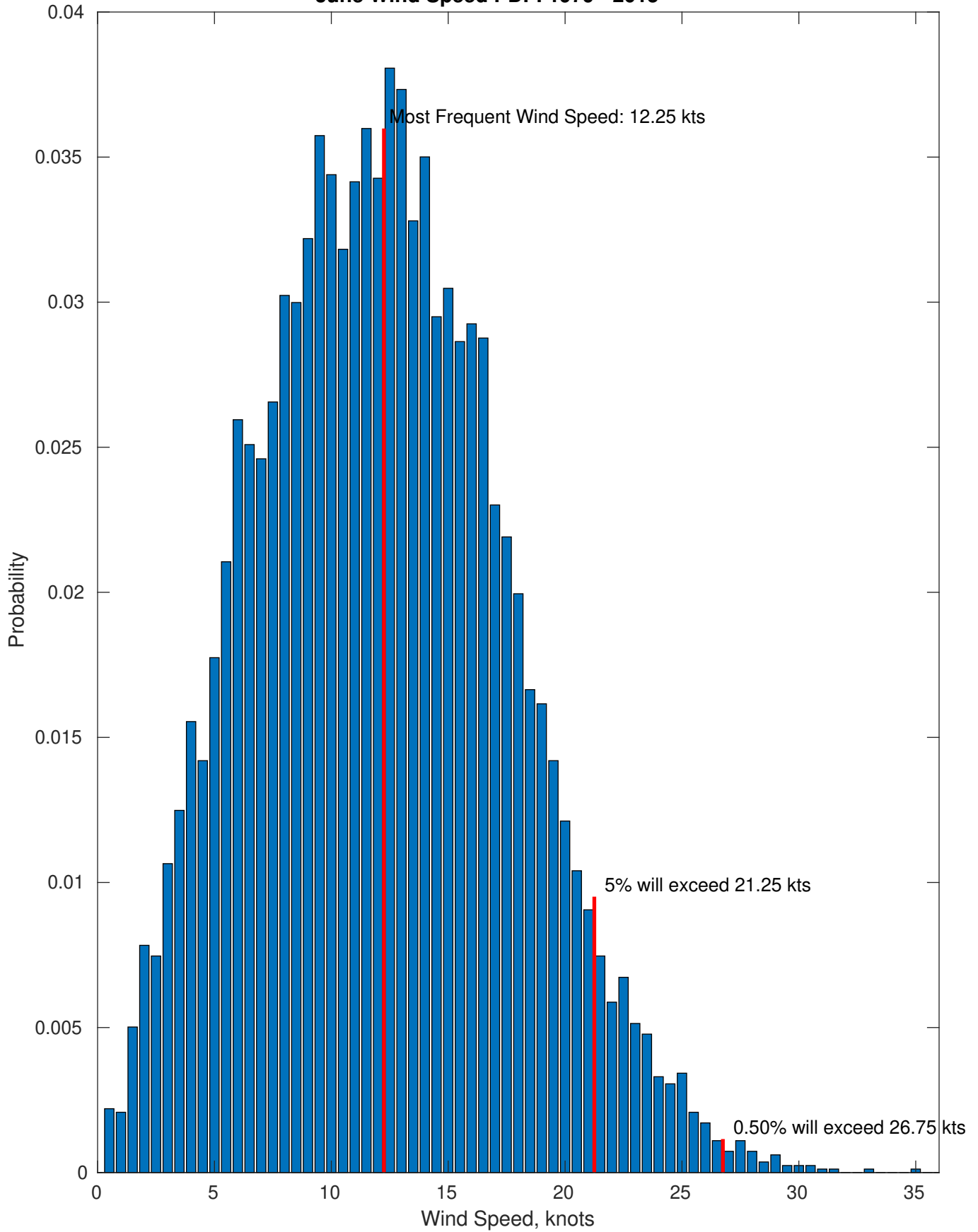
**Wind-Sea: 24.08%**



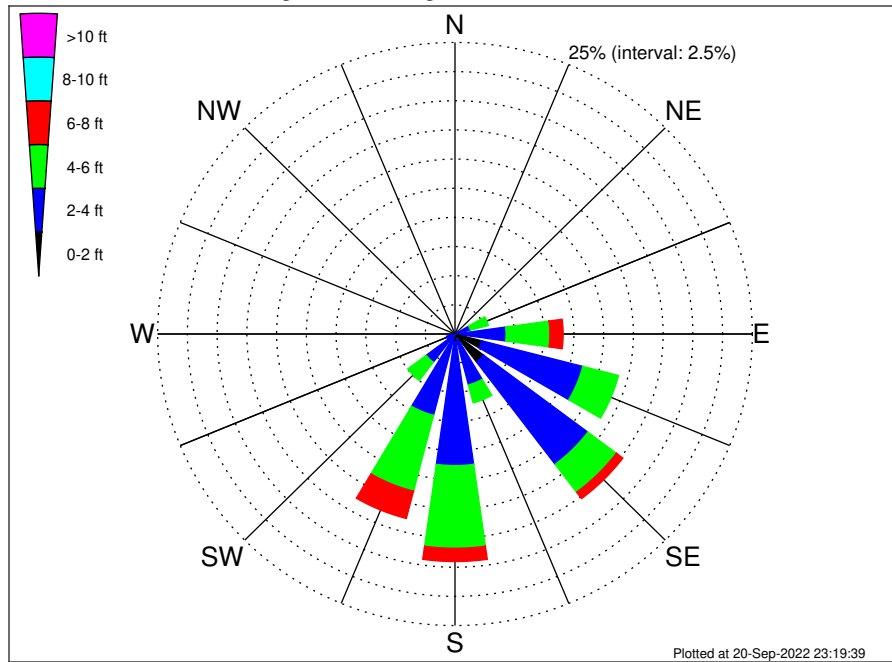
**Swell: 75.92%**



June Wind Speed PDF: 1979 - 2015



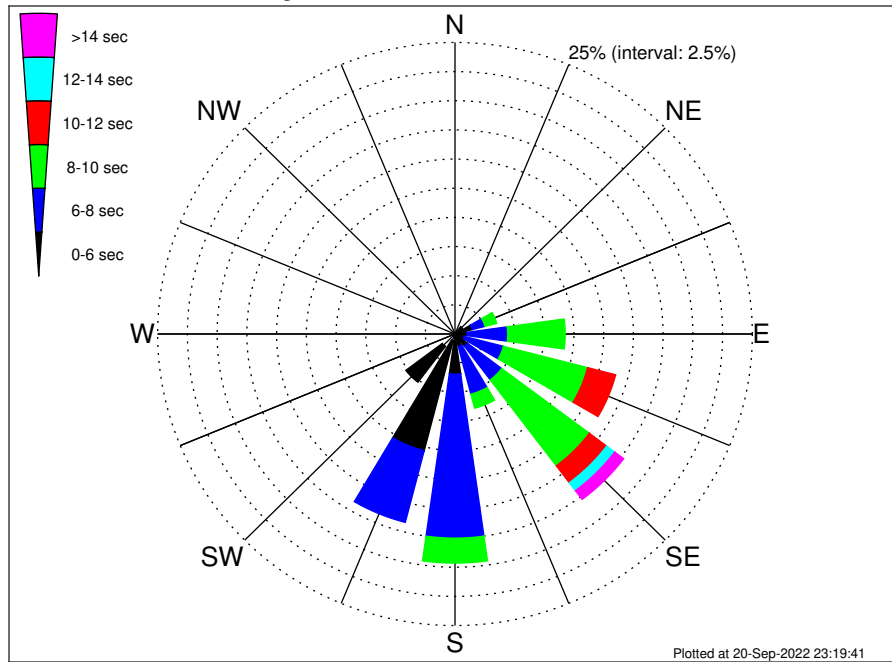
OCS-A 0537 Climatological WaveHeight Rose for June: 1979 - 2015



Joint Frequency Distribution Table

	N	NNE	NE	ENE	E	ESE	SE	SSE	S	SSW	SW	WSW	W	WNW	NW	NNW	Total
calm	•	•	•	0.01	•	0.06	0.04	•	0.04	•	•	•	•	•	•	•	0.15
1 - 2 ft	•	0.04	0.01	0.09	0.31	2.29	2.95	0.53	0.65	0.24	0.05	0.02	0.05	0.02	0.01	0.01	7.27
2 - 4 ft	0.43	0.20	0.20	1.24	3.99	8.75	11.00	3.98	10.60	6.95	2.99	0.72	0.20	0.55	0.59	0.40	52.78
4 - 6 ft	0.12	0.23	0.48	1.57	3.68	3.10	3.00	1.59	7.09	6.72	1.95	0.09	0.10	0.42	0.26	0.20	30.58
6 - 8 ft	0.01	0.01	0.18	0.60	1.11	0.35	0.69	0.44	1.14	2.42	0.37	•	0.06	0.04	0.06	0.05	7.54
8 - 10 ft	•	0.01	•	0.10	0.43	0.07	0.06	0.07	0.18	0.40	0.01	•	•	•	0.02	0.02	1.40
10 - 12 ft	•	•	0.02	0.02	0.13	•	0.02	•	0.05	0.01	•	•	•	•	•	•	0.27
12 - 14 ft	•	•	•	•	•	•	•	•	0.02	•	•	•	•	•	•	•	0.02
14 - 16 ft	•	•	•	•	•	•	•	•	•	•	•	•	•	•	•	•	•
16 - 18 ft	•	•	•	•	•	•	•	•	•	•	•	•	•	•	•	•	•
> 18 ft	•	•	•	•	•	•	•	•	•	•	•	•	•	•	•	•	•
Total	0.56	0.49	0.89	3.62	9.66	14.63	17.76	6.61	19.77	16.76	5.36	0.83	0.40	1.03	0.94	0.69	100.00

OCS-A 0537 Climatological WavePeriod Rose for June: 1979 - 2015

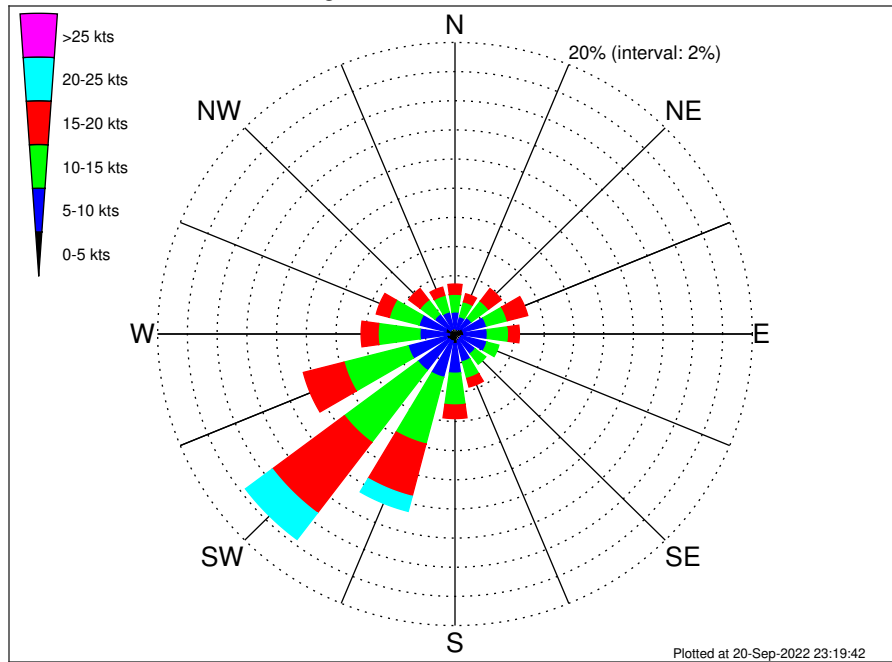


Joint Frequency Distribution Table

	N	NNE	NE	E	ESE	SE	SSE	S	SSW	SW	WSW	W	WNW	NW	NNW	Total
calm	.	.	.	.	.	.	.	.	.	.	.	.	.	.	.	.
1 - 2 sec	.	.	.	.	.	.	.	.	.	.	.	.	.	.	.	.
2 - 4 sec	0.34	0.17	0.13	0.23	0.11	0.06	0.11	0.09	0.17	0.59	1.33	0.45	0.22	0.54	0.53	5.45
4 - 6 sec	0.22	0.31	0.66	1.27	0.91	0.75	1.21	1.02	3.27	9.74	3.84	0.38	0.18	0.49	0.42	24.98
6 - 8 sec	.	0.01	0.10	1.10	3.41	3.40	3.60	4.22	14.06	6.35	0.18	.	.	.	.	36.45
8 - 10 sec	.	.	.	1.02	4.83	7.31	9.23	1.25	2.14	0.07	.	.	.	.	.	25.85
10 - 12 sec	.	.	.	.	0.39	2.44	1.82	0.04	0.12	.	.	.	.	.	.	4.81
12 - 14 sec	.	.	.	.	.	0.37	0.84	.	.	.	.	.	.	.	.	1.21
14 - 16 sec	.	.	.	.	.	0.31	0.64	.	.	.	.	.	.	.	.	0.94
18 - 20 sec	.	.	.	.	.	.	0.29	.	.	.	.	.	.	.	.	0.29
22 - 24 sec	.	.	.	.	.	.	0.01	.	.	.	.	.	.	.	.	0.01
Total	0.56	0.49	0.89	3.62	9.66	14.63	17.76	6.61	19.77	16.76	5.36	0.83	0.40	1.03	0.94	100.00



OCS-A 0537 Climatological Wind Rose for June: 1979 - 2015



Joint Frequency Distribution Table

	N	NNE	NE	ENE	E	ESE	SE	SSE	S	SSW	SW	WSW	W	WNW	NW	NNW	Total
calm	•	•	0.05	0.01	•	•	0.04	•	0.01	0.01	•	0.01	0.01	0.06	0.01	•	0.22
0 - 5 kts	0.40	0.33	0.37	0.55	0.60	0.47	0.39	0.48	0.65	0.50	0.51	0.58	0.37	0.59	0.37	0.38	7.53
5 - 10 kts	1.11	0.91	0.97	1.63	1.58	1.75	1.27	1.49	2.03	2.56	2.61	2.67	1.98	1.85	1.32	1.19	26.92
10 - 15 kts	1.21	1.05	1.44	1.44	1.43	0.83	0.89	1.18	2.18	4.72	6.19	4.46	2.82	2.07	1.24	1.18	34.33
15 - 20 kts	0.70	0.56	1.08	1.42	0.72	0.39	0.29	0.61	0.93	3.71	6.07	2.83	1.14	0.91	0.97	0.58	22.90
20 - 25 kts	0.24	0.48	0.35	0.35	0.18	0.10	0.16	0.13	0.20	1.06	2.26	0.37	0.17	0.23	0.28	0.21	6.79
25 - 30 kts	0.02	0.15	0.11	0.16	•	0.02	0.01	0.02	0.02	0.23	0.23	0.01	0.05	0.04	0.04	0.09	1.21
30 - 35 kts	•	0.01	0.01	•	•	•	•	•	•	•	0.01	0.01	•	•	0.02	0.01	0.09
35 - 40 kts	•	•	0.01	•	•	•	•	•	•	•	•	•	•	•	•	•	0.01
40 - 45 kts	•	•	•	•	•	•	•	•	•	•	•	•	•	•	•	•	•
45 - 50 kts	•	•	•	•	•	•	•	•	•	•	•	•	•	•	•	•	•
Total	3.70	3.49	4.39	5.57	4.52	3.56	3.06	3.92	6.02	12.80	17.89	10.93	6.54	5.74	4.25	3.62	100.00