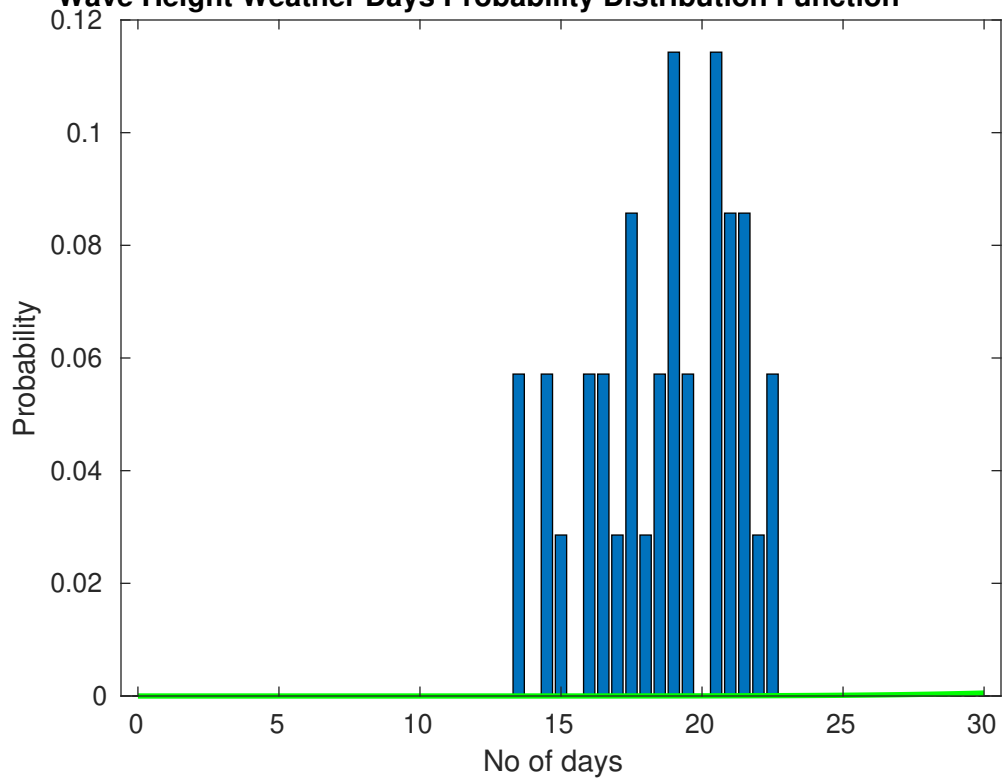
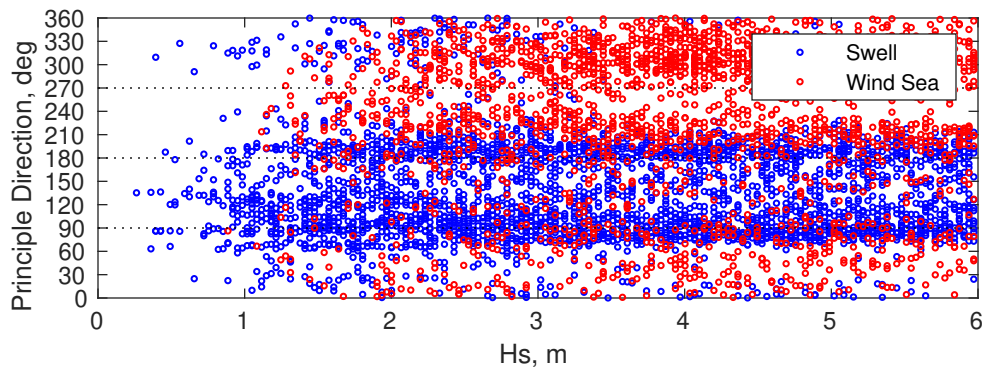
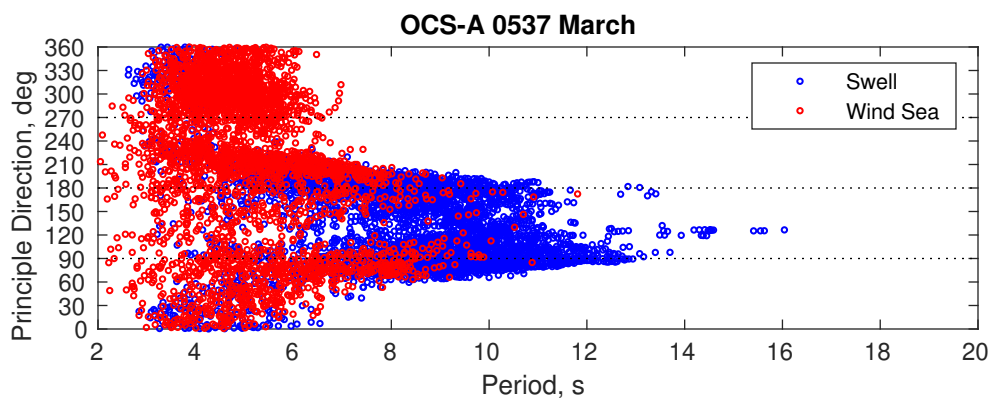
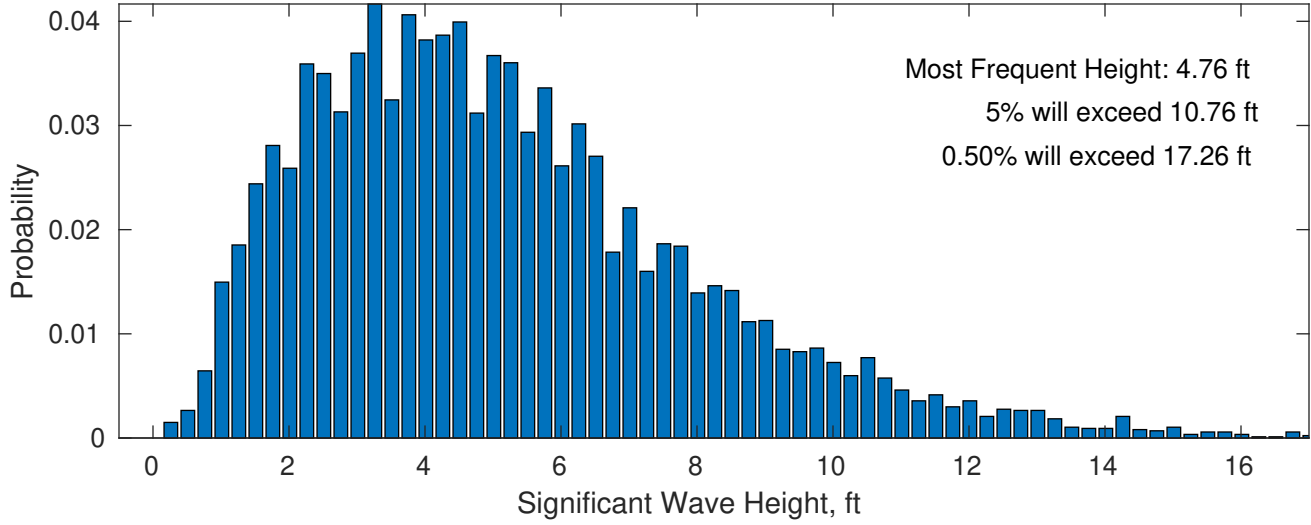


Wave Height Weather Days Probability Distribution Function

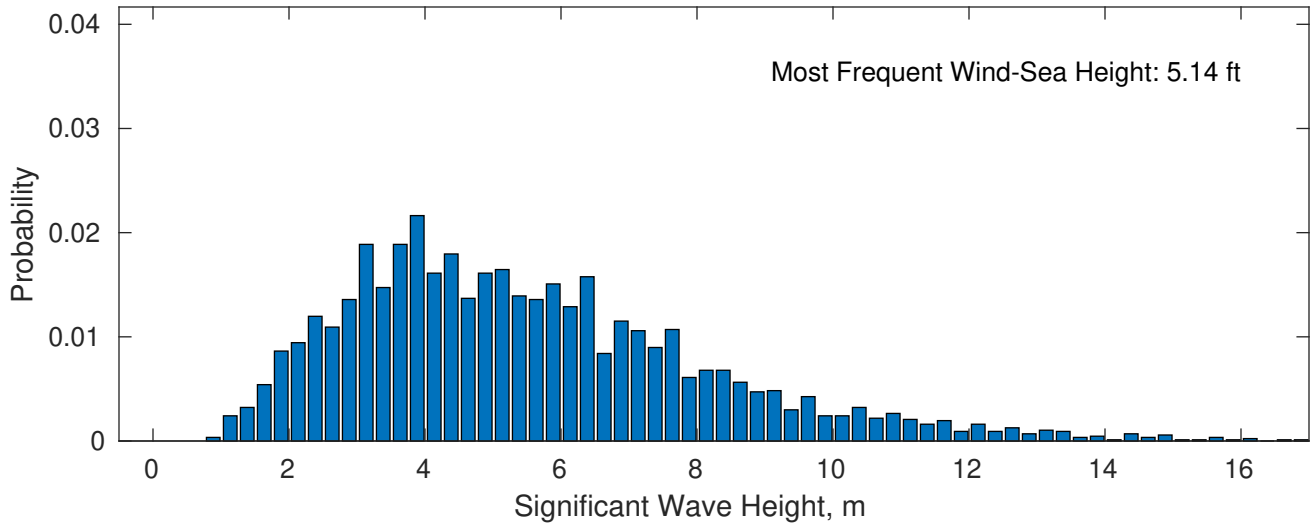




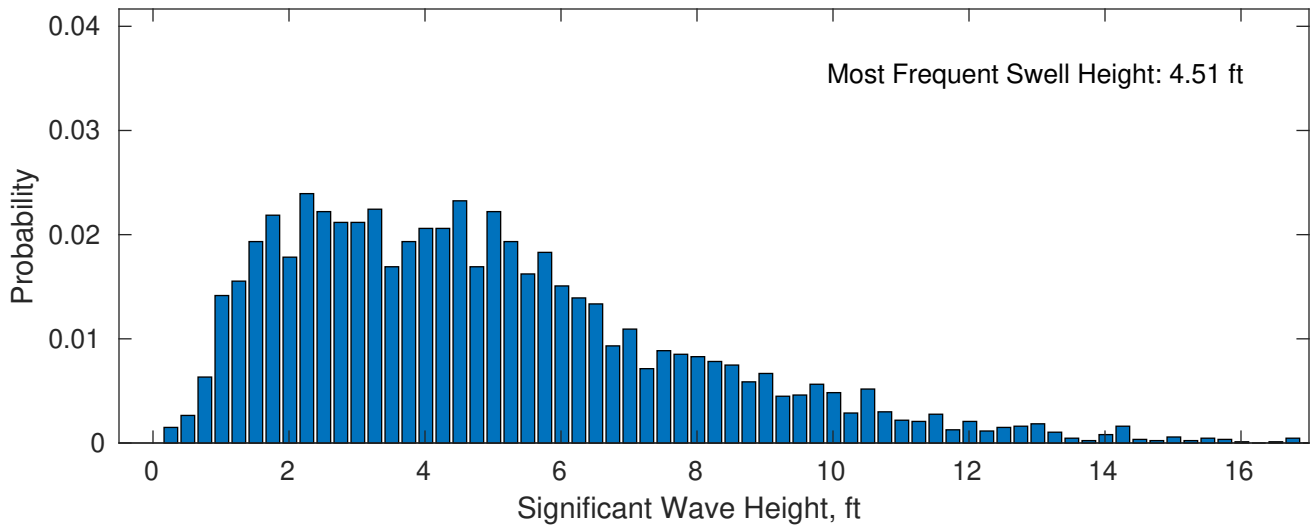
March Wave Height PDF: 1979 - 2015



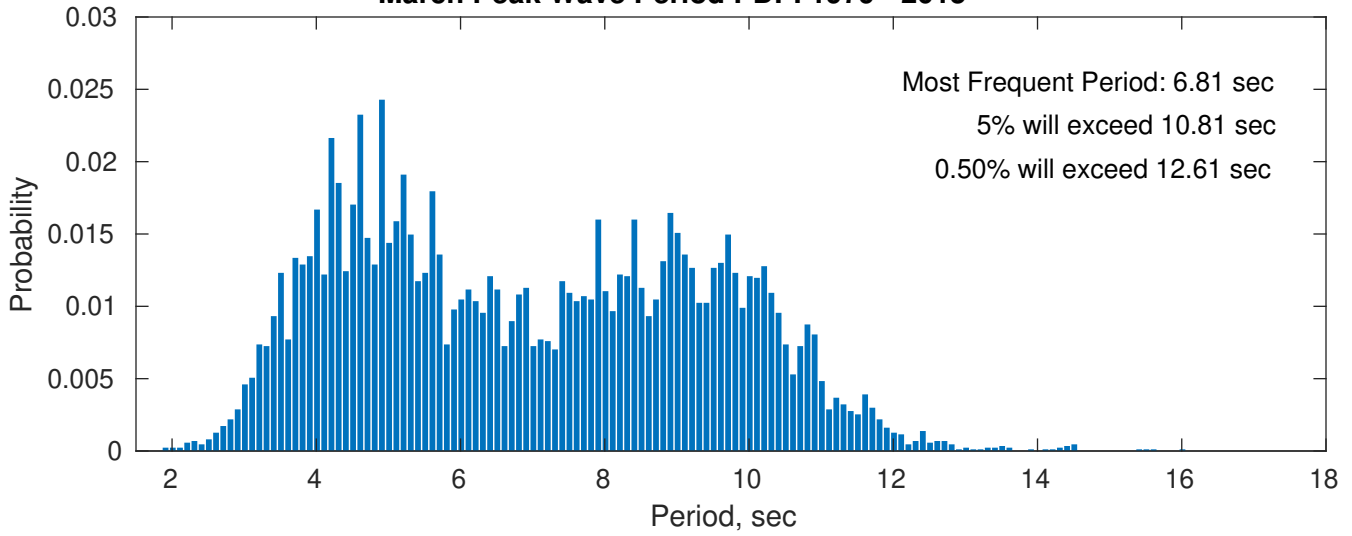
Wind-Sea: 41.58%



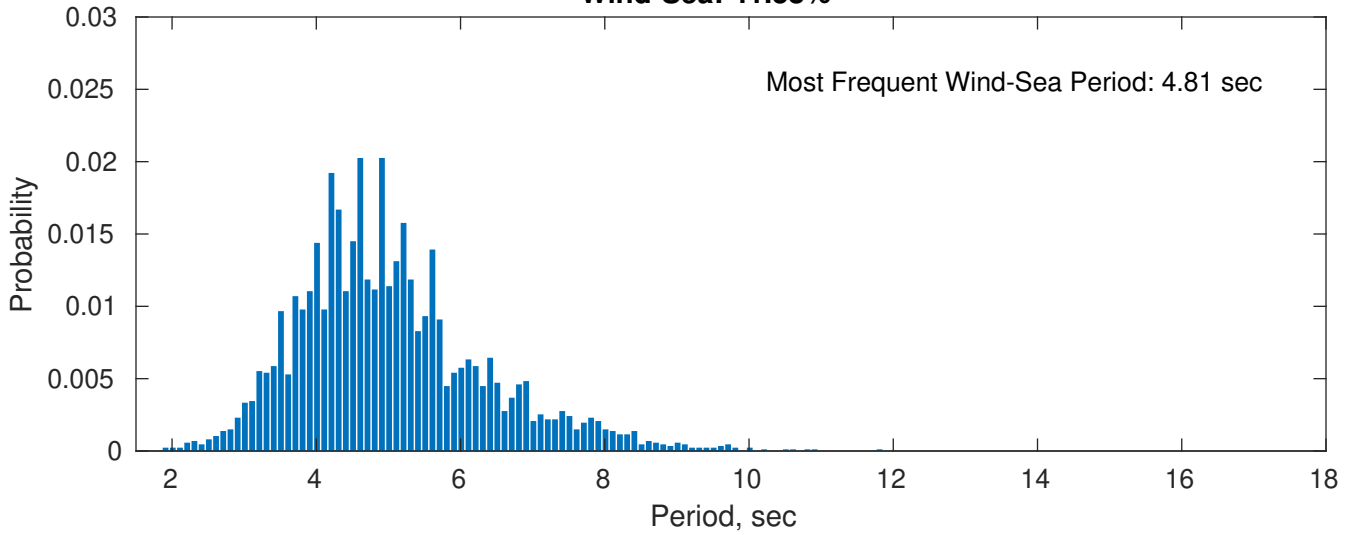
Swell: 58.42%



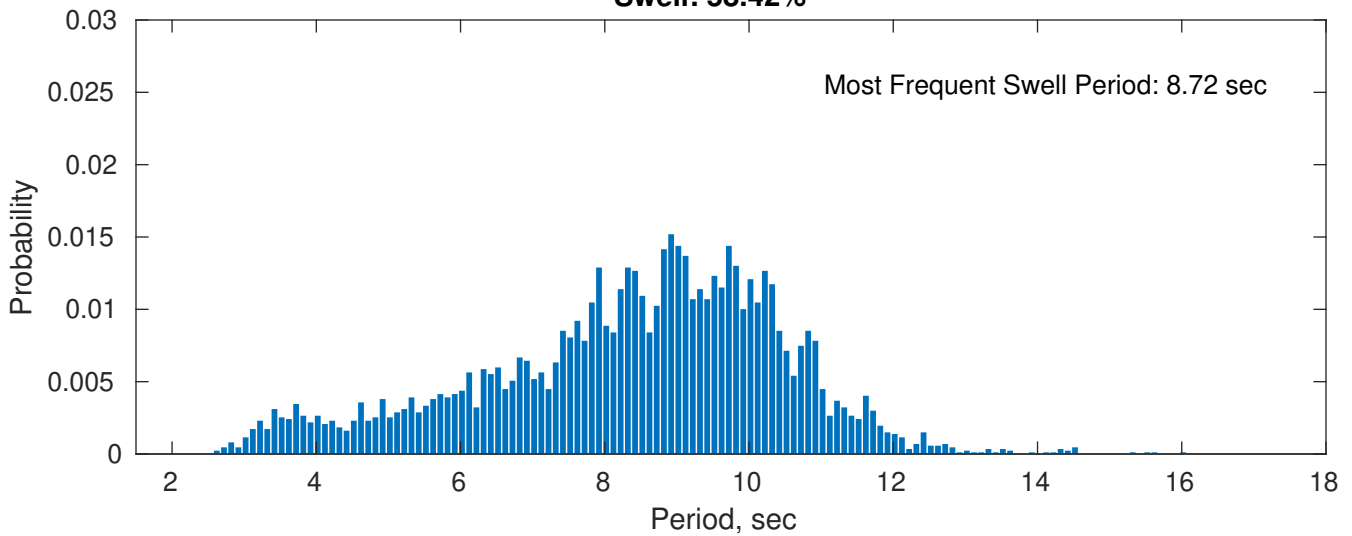
March Peak Wave Period PDF: 1979 - 2015



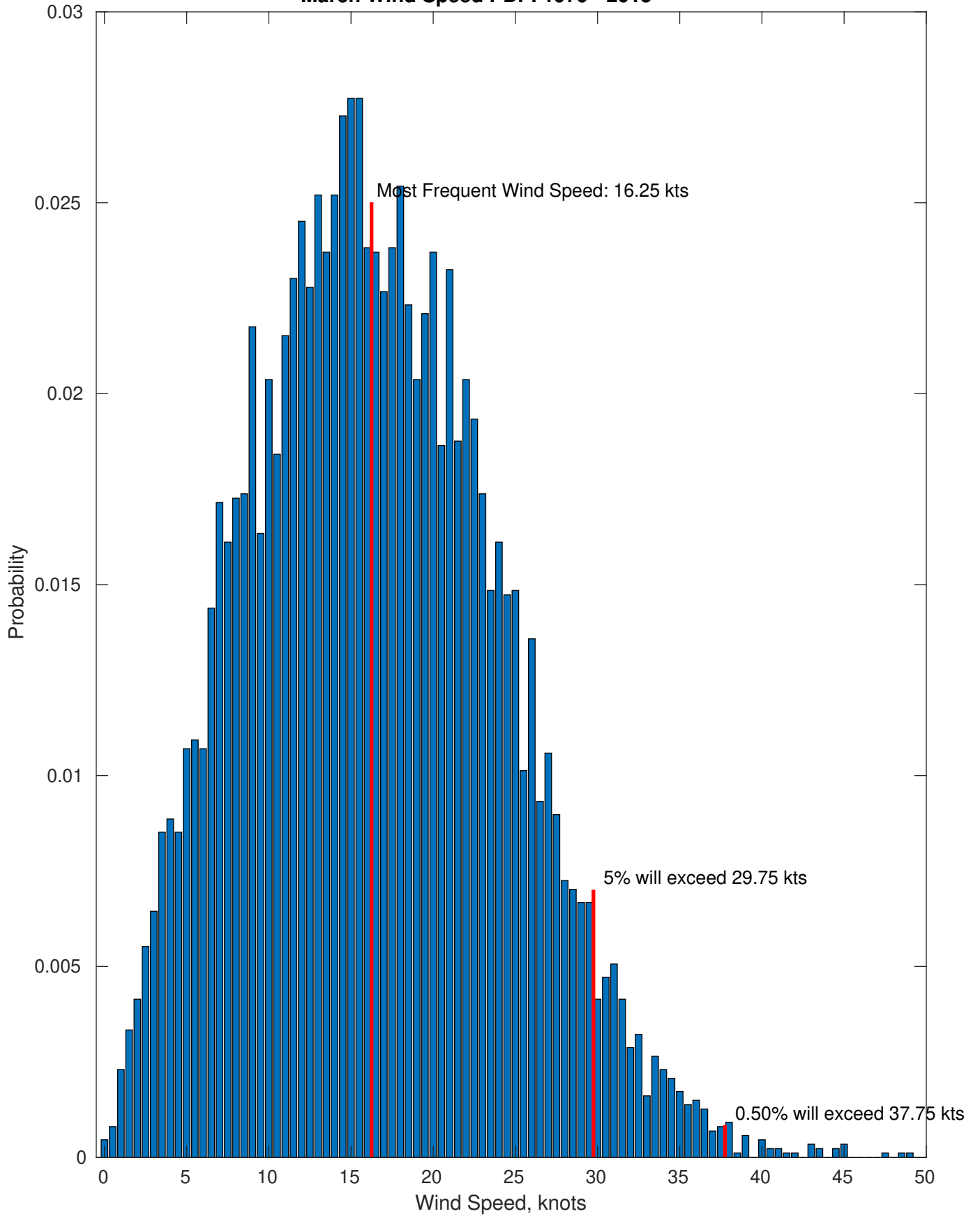
Wind-Sea: 41.58%



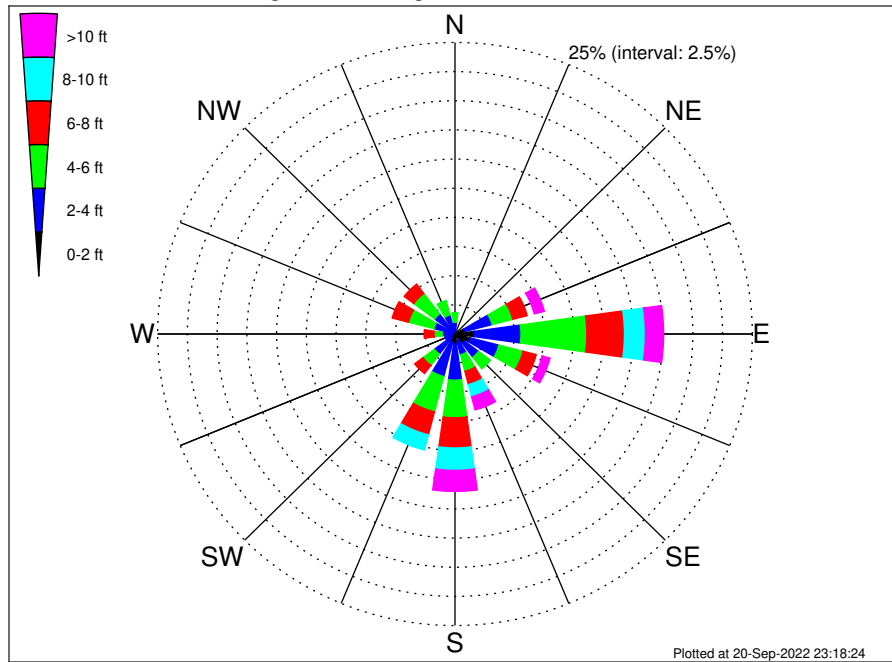
Swell: 58.42%



March Wind Speed PDF: 1979 - 2015



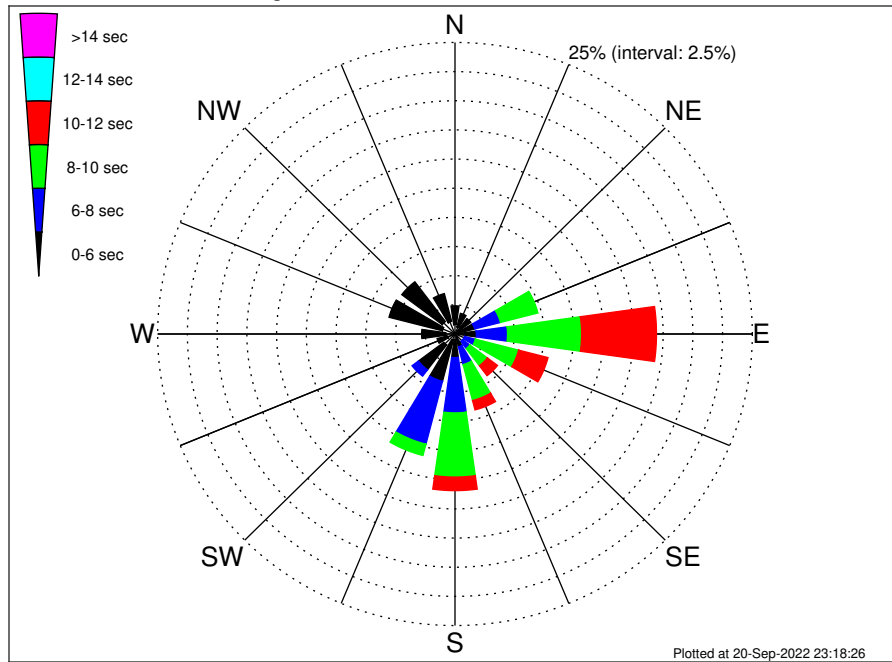
OCS-A 0537 Climatological WaveHeight Rose for March: 1979 - 2015



Joint Frequency Distribution Table

	N	NNE	NE	ENE	E	ESE	SE	SSE	S	SSW	SW	WSW	W	WNW	NW	NNW	Total
calm	•	0.02	•	0.10	0.22	0.16	0.23	0.07	0.13	0.01	0.01	0.01	•	0.01	0.07	0.01	1.06
1 - 2 ft	0.20	0.31	0.22	0.75	1.42	1.16	0.78	0.48	0.75	0.74	0.43	0.22	0.14	0.20	0.25	0.15	8.18
2 - 4 ft	0.81	0.52	0.60	2.37	3.91	2.50	1.47	1.29	3.08	3.02	1.74	0.64	0.93	1.63	1.83	1.53	27.87
4 - 6 ft	0.83	0.59	0.60	1.80	5.54	2.09	1.24	1.46	3.22	3.13	1.20	0.37	0.69	2.20	2.20	1.27	28.42
6 - 8 ft	0.52	0.36	0.32	1.25	3.16	1.14	0.43	1.17	2.59	2.04	0.87	0.28	0.84	1.42	1.00	0.49	17.88
8 - 10 ft	0.13	0.10	0.08	0.61	1.76	0.52	0.14	1.08	1.92	1.35	0.24	0.13	0.25	0.44	0.28	0.14	9.16
10 - 12 ft	0.03	0.01	0.13	0.55	1.00	0.31	0.09	0.68	0.94	0.29	0.03	0.01	0.12	0.06	0.01	0.01	4.28
12 - 14 ft	•	•	0.01	0.28	0.33	0.20	0.13	0.22	0.46	0.12	•	•	•	0.02	0.01	•	1.77
14 - 16 ft	•	•	•	0.03	0.10	0.09	0.08	0.09	0.23	0.07	•	•	•	•	•	•	0.70
16 - 18 ft	•	•	•	0.01	0.03	0.05	0.07	0.06	0.06	0.01	•	•	•	•	•	•	0.29
> 18 ft	•	•	•	•	0.06	0.03	0.06	0.12	0.12	•	•	•	•	•	•	•	0.38
Total	2.51	1.91	1.96	7.76	17.54	8.25	4.72	6.72	13.50	10.76	4.52	1.66	2.97	5.97	5.65	3.60	100.00

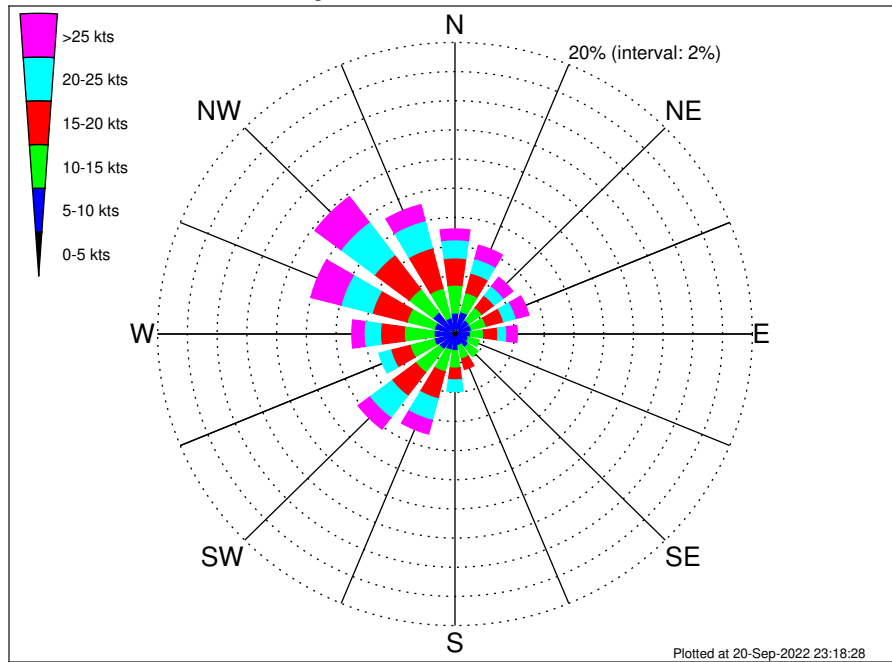
OCS-A 0537 Climatological WavePeriod Rose for March: 1979 - 2015



Joint Frequency Distribution Table

	N	NNE	NE	ENE	E	ESE	SE	SSE	S	SSW	SW	WSW	W	WNW	NW	NNW	Total
calm	•	•	•	•	•	•	•	•	•	•	•	•	•	•	•	•	•
1 - 2 sec	•	•	•	0.01	0.01	•	•	•	•	•	•	•	•	•	•	•	0.02
2 - 4 sec	0.81	0.63	0.32	0.33	0.28	0.29	0.18	0.30	0.49	0.54	1.17	0.63	0.77	1.09	1.34	1.12	10.30
4 - 6 sec	1.61	1.20	1.34	1.36	1.51	0.54	0.61	0.83	1.53	3.65	2.67	0.92	2.04	4.64	4.27	2.46	31.17
6 - 8 sec	0.09	0.08	0.30	2.24	2.62	0.94	0.77	1.58	4.74	5.57	0.68	0.10	0.16	0.24	0.05	0.02	20.20
8 - 10 sec	•	•	•	3.26	6.23	3.75	1.84	3.19	5.50	1.00	•	•	•	•	•	•	24.77
10 - 12 sec	•	•	•	0.55	6.30	2.55	1.07	0.83	1.16	•	•	•	•	•	•	•	12.46
12 - 14 sec	•	•	•	•	0.60	0.14	0.10	•	0.07	•	•	•	•	•	•	•	0.91
14 - 16 sec	•	•	•	•	•	0.03	0.13	•	•	•	•	•	•	•	•	•	0.16
18 - 20 sec	•	•	•	•	•	•	0.01	•	•	•	•	•	•	•	•	•	0.01
22 - 24 sec	•	•	•	•	•	•	•	•	•	•	•	•	•	•	•	•	•
Total	2.51	1.91	1.96	7.76	17.54	8.25	4.72	6.72	13.50	10.76	4.52	1.66	2.97	5.97	5.65	3.60	100.00

OCS-A 0537 Climatological Wind Rose for March: 1979 - 2015



Joint Frequency Distribution Table

	N	NNE	NE	ENE	E	ESE	SE	SSE	S	SSW	SW	WSW	W	WNW	NW	NNW	Total
calm	0.01	0.01	•	0.01	0.01	•	0.01	•	0.01	0.01	0.01	•	0.02	0.01	•	•	0.13
0 - 5 kts	0.36	0.40	0.39	0.33	0.25	0.24	0.21	0.28	0.22	0.30	0.29	0.23	0.18	0.40	0.44	0.24	4.76
5 - 10 kts	1.08	1.16	0.78	0.81	0.78	0.69	0.90	0.54	0.92	0.83	1.01	1.23	1.21	1.01	1.40	0.91	15.27
10 - 15 kts	1.91	1.36	1.09	1.01	0.89	0.75	0.82	0.96	1.20	1.54	1.99	1.67	2.00	1.91	2.01	2.09	23.20
15 - 20 kts	1.86	1.38	1.04	1.22	0.96	0.45	0.47	0.74	0.81	1.91	2.01	1.34	1.60	2.42	2.92	2.85	23.97
20 - 25 kts	1.24	1.02	0.79	0.87	0.61	0.35	0.36	0.40	0.79	1.53	1.88	0.82	1.10	2.18	2.83	1.93	18.71
25 - 30 kts	0.45	0.61	0.47	0.54	0.29	0.21	0.26	0.22	0.33	0.68	0.70	0.23	0.52	1.43	1.67	0.90	9.51
30 - 35 kts	0.17	0.24	0.17	0.25	0.21	0.03	0.05	0.12	0.12	0.21	0.20	0.07	0.22	0.58	0.48	0.17	3.28
35 - 40 kts	0.10	0.08	0.13	0.05	0.10	0.02	0.03	0.02	0.02	0.06	0.06	0.03	0.05	0.07	0.02	0.05	0.90
40 - 45 kts	0.01	0.01	•	0.01	0.07	•	•	•	0.01	0.01	•	•	0.03	0.01	0.01	0.01	0.20
45 - 50 kts	•	•	•	0.02	0.02	•	•	•	•	0.01	0.01	•	•	•	•	•	0.07
Total	7.20	6.28	4.87	5.13	4.19	2.74	3.11	3.27	4.43	7.09	8.16	5.62	6.94	10.01	11.80	9.16	100.00