

OCS-A 0537 - May

Latitude: 39.96 N Longitude: 72.73 W

Weather Days

Wave Height > 3.0 ft Mean: 22.5 days Range: 19.3 - 25.6 days p50:23.5 days p75:20.5 days p90:18 days
Wave Height > 4.0 ft Mean: 15.2 days Range: 11.9 - 18.5 days p50:15.5 days p75:13.5 days p90:10.5 days
Wave Height > 5.0 ft Mean: 8.9 days Range: 5.9 - 11.8 days p50:9.5 days p75:7 days p90:4.5 days

Wind Speed > 20.0 knots Mean: 4.1 days Range: 2.3 - 5.9 days p50:4.5 days p75:3 days p90:2 days
Wind Speed > 25.0 knots Mean: 1.1 days Range: 0.2 - 2.0 days p50:1.5 days p75:0.5 days p90:0.5 days
Wind Speed > 30.0 knots Mean: 0.2 days Range: 0.0 - 0.5 days p50:0.5 days p75:0.5 days p90:0.5 days

Working Window Probability

Wave Height < 3.0 ft	3 days or longer: 15%
	5 days or longer: 0%
	7 days or longer: 0%
Wave Height < 4.0 ft	3 days or longer: 29%
	5 days or longer: 5%
	7 days or longer: 2%
Wave Height < 5.0 ft	3 days or longer: 51%
	5 days or longer: 17%
	7 days or longer: 7%

Waves

Mean Height: 4 - 6 ft
The wave heights will occasionally reach 10 - 12 ft, but rarely higher.

Mean Period: 6 - 8 sec
The wave periods will occasionally reach 12 - 14 sec, but rarely longer.

Principle Direction, from: E
WindSea/Swell: 26% / 74%

Winds

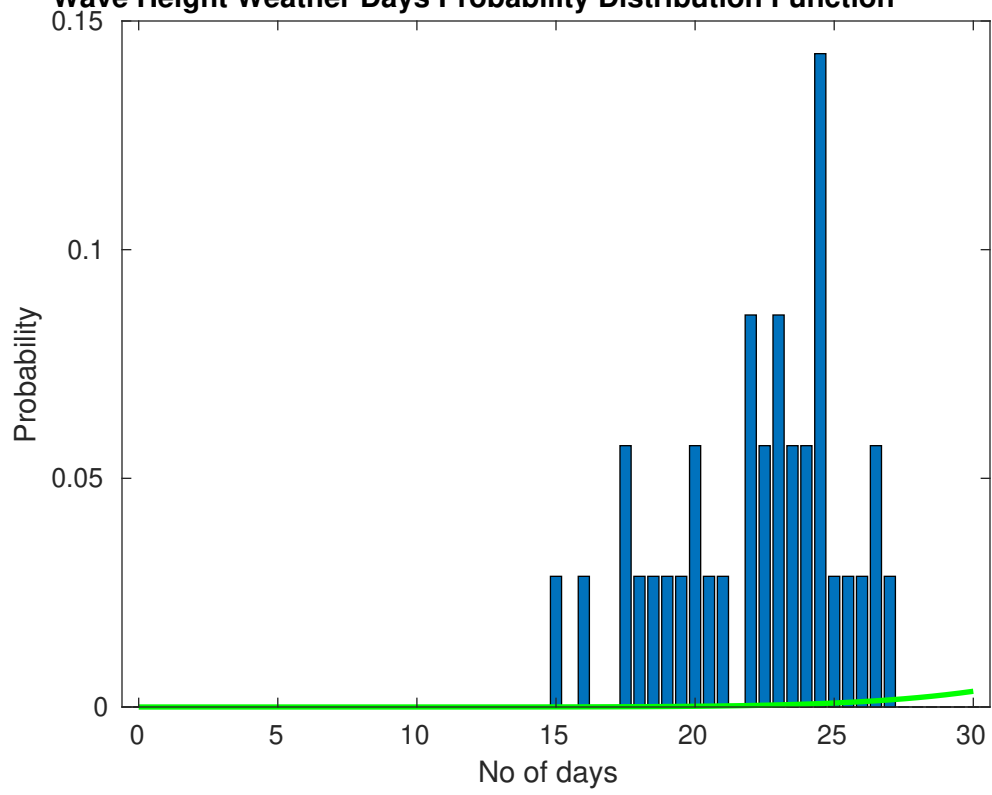
Mean Speed: 10 - 15 kts
The winds will occasionally reach 30 - 35 kts, but rarely greater.

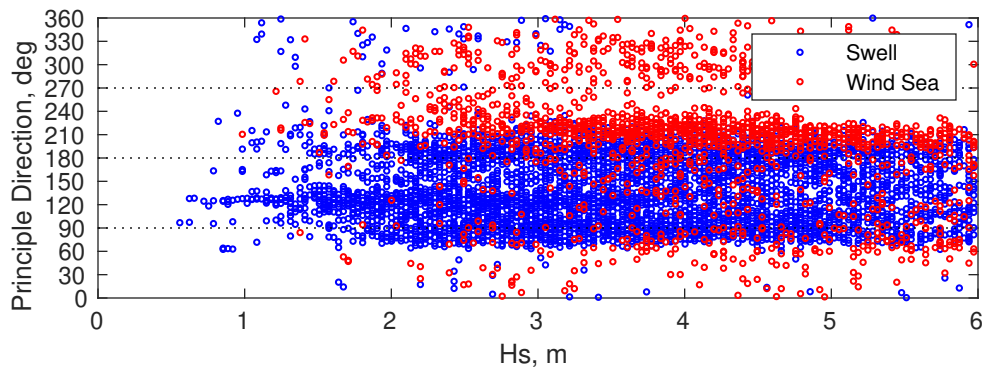
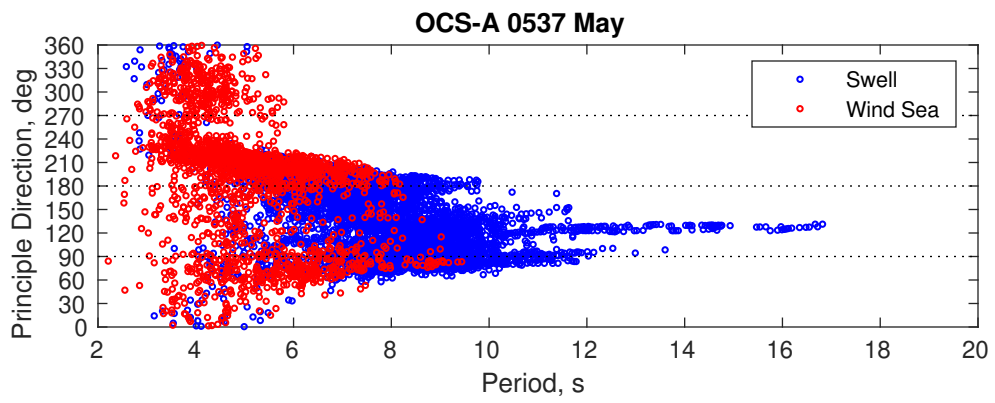
Principle Direction, from: SW

Severe Storms

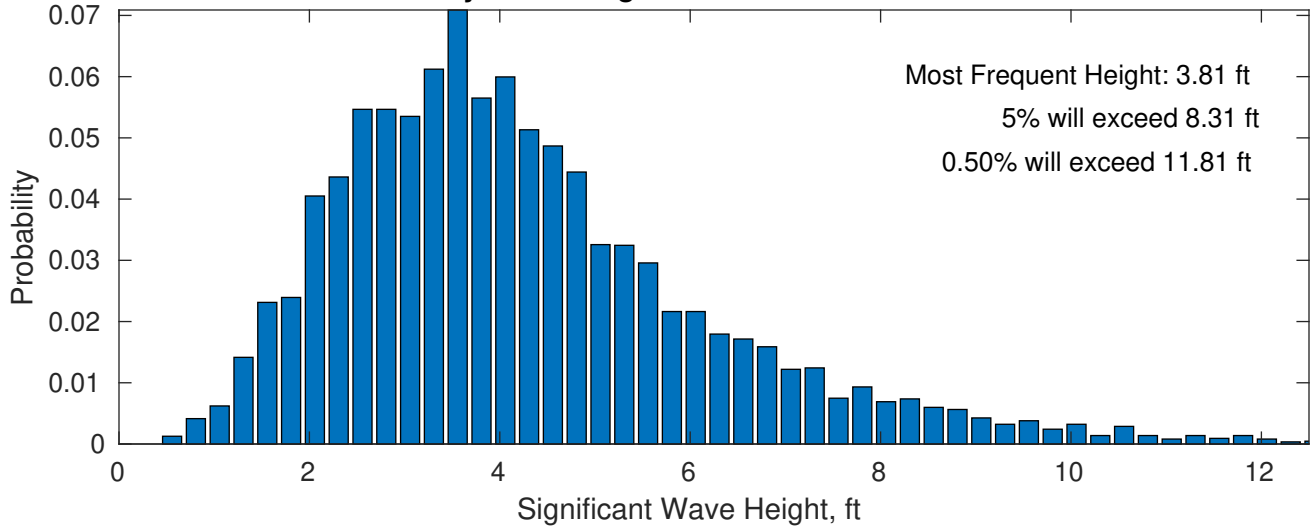
There is a 3 % chance of a storm occurring in the month with winds peaking above 34 kts.
There is a 11 % chance of a storm occurring in the month with waves peaking at 4m (13 ft) or greater.

Wave Height Weather Days Probability Distribution Function

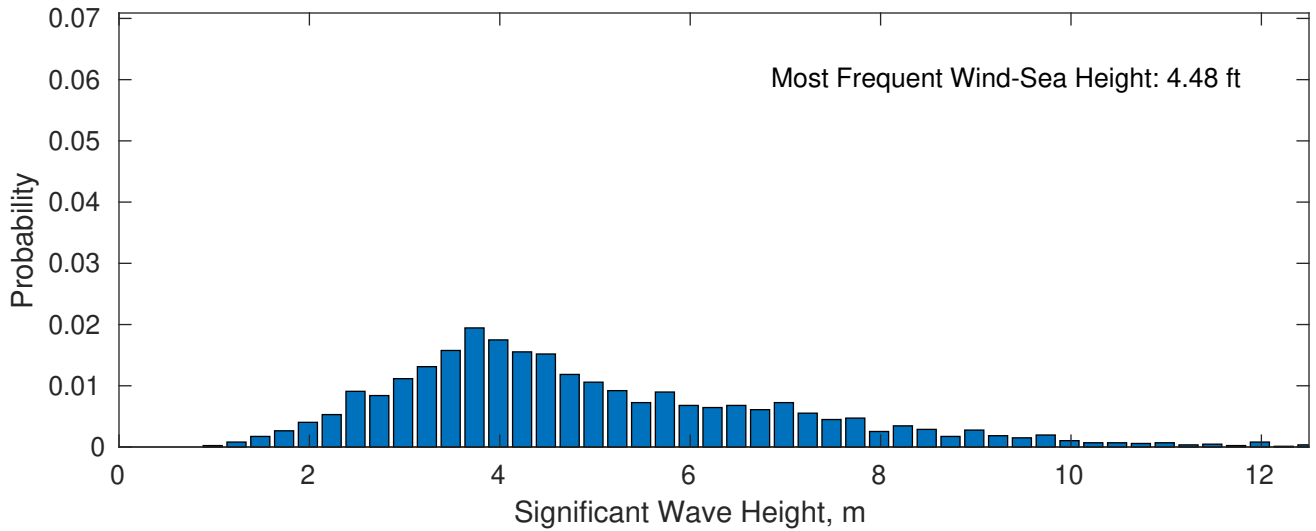




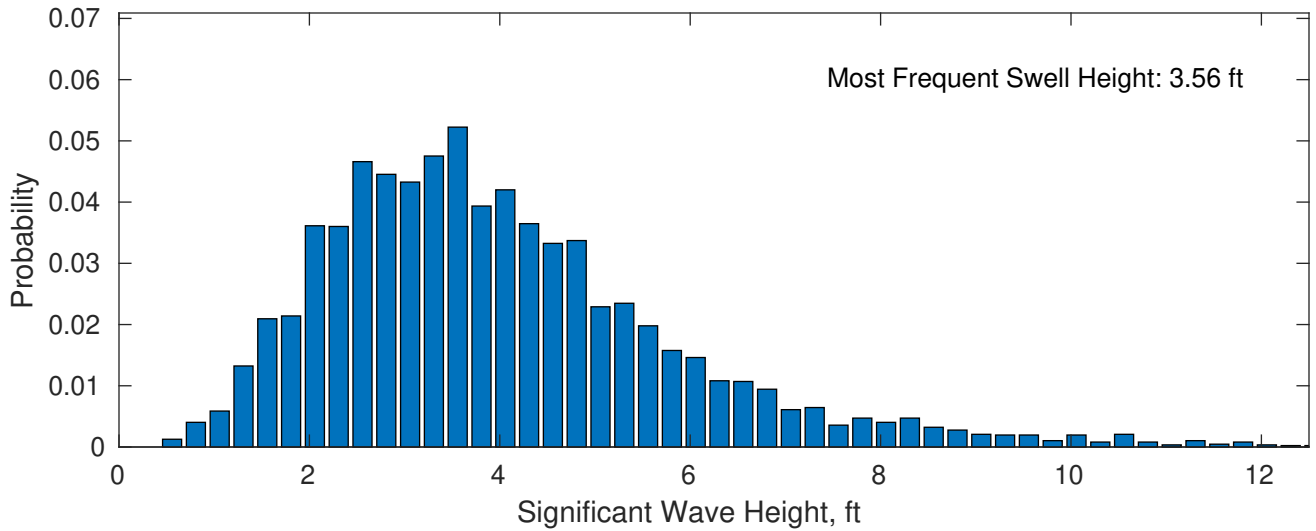
May Wave Height PDF: 1979 - 2015



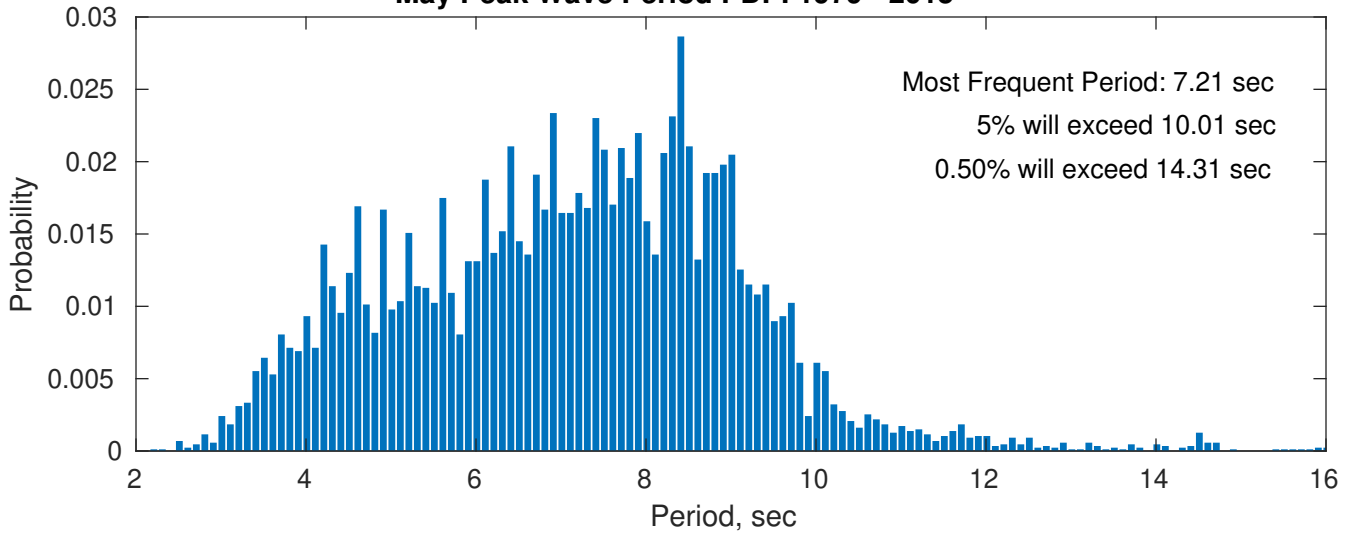
Wind-Sea: 26.24%



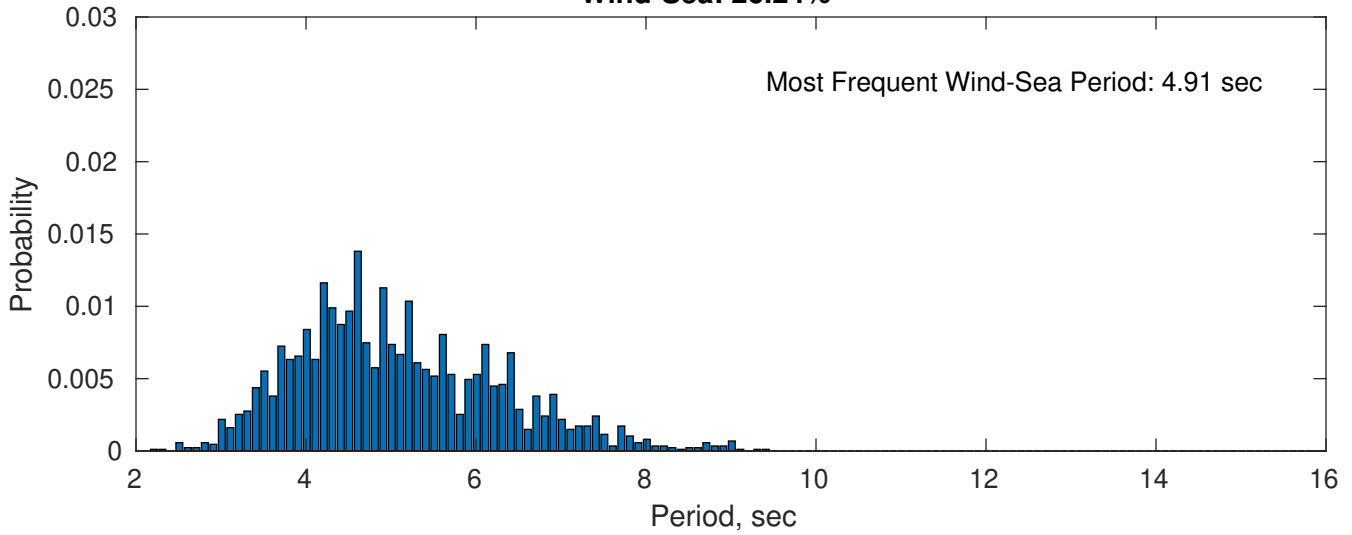
Swell: 73.76%



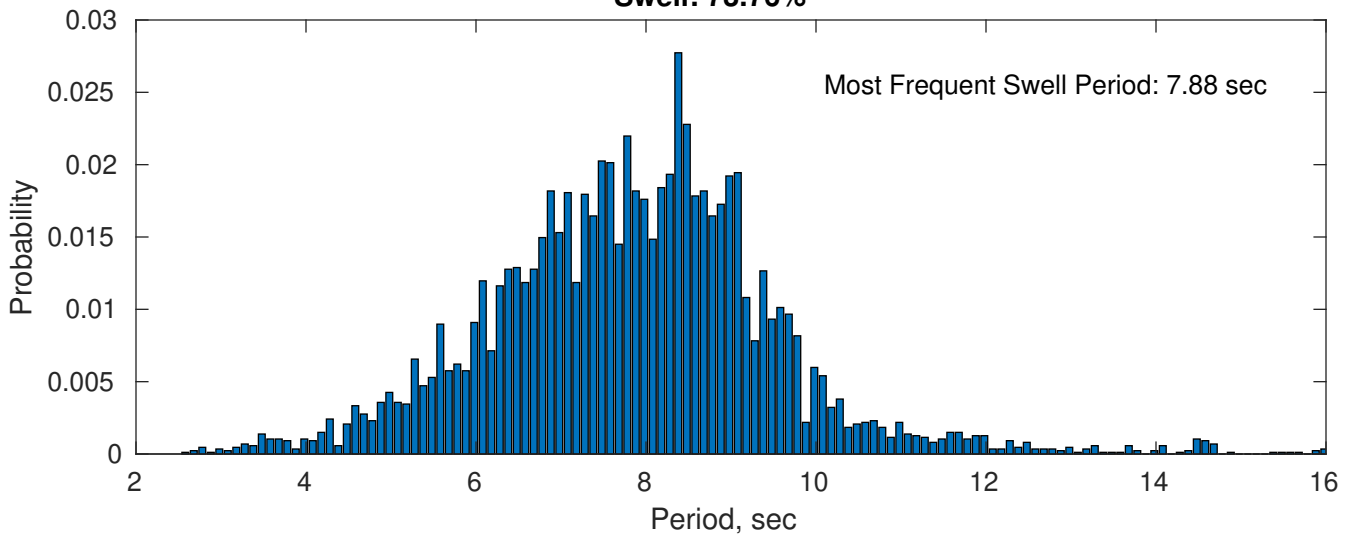
May Peak Wave Period PDF: 1979 - 2015



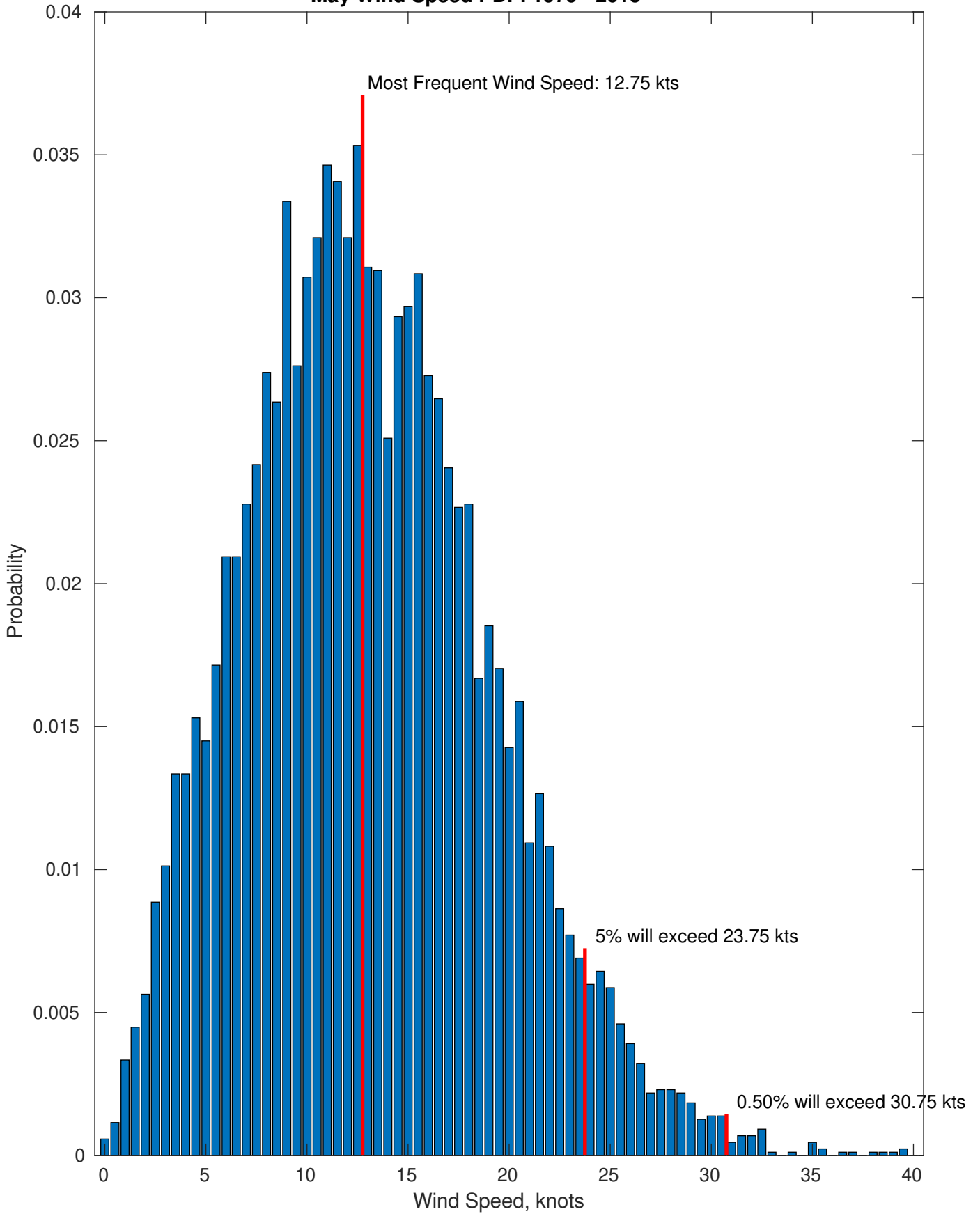
Wind-Sea: 26.24%



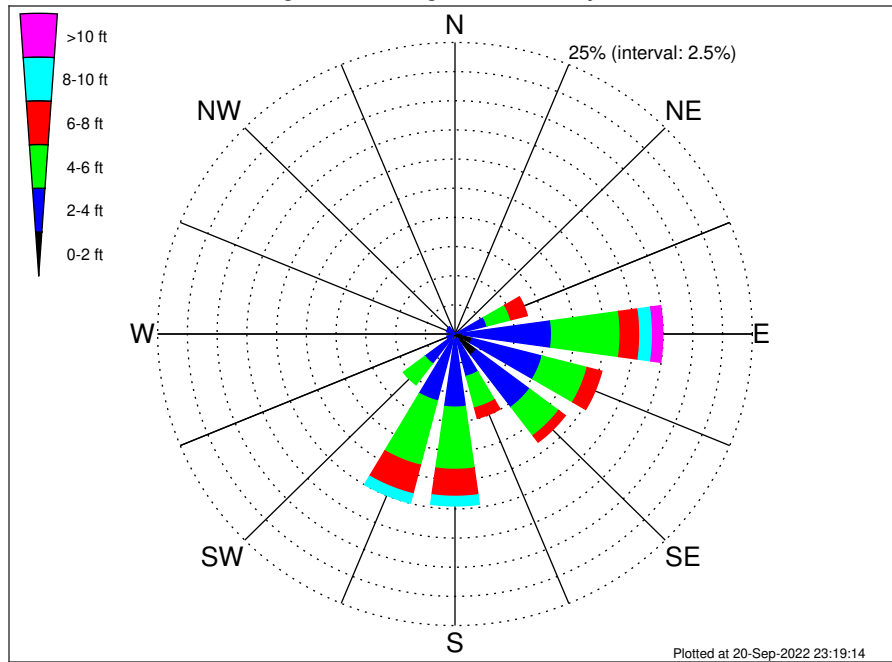
Swell: 73.76%



May Wind Speed PDF: 1979 - 2015



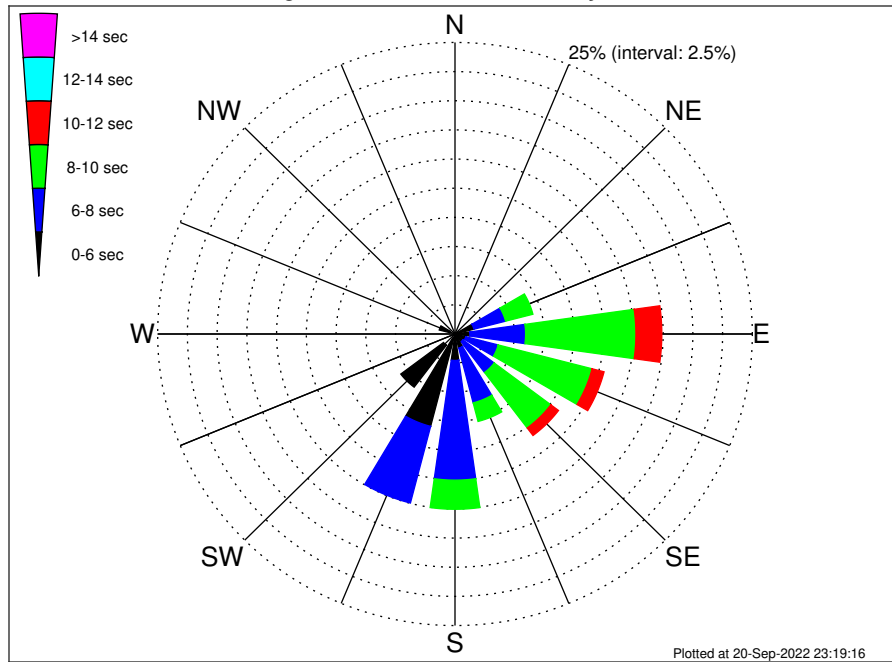
OCS-A 0537 Climatological WaveHeight Rose for May: 1979 - 2015



Joint Frequency Distribution Table

	N	NNE	NE	ENE	E	ESE	SE	SSE	S	SSW	SW	WSW	W	WNW	NW	NNW	Total
calm	•	•	•	0.06	0.05	0.02	0.23	0.03	•	0.02	0.01	0.01	•	•	•	•	0.44
1 - 2 ft	0.03	0.02	0.03	0.14	0.59	1.47	2.01	0.37	0.45	0.53	0.28	0.06	0.09	0.07	0.09	0.09	6.33
2 - 4 ft	0.20	0.20	0.21	2.58	7.49	6.08	5.60	3.35	5.82	5.36	2.89	0.64	0.37	0.67	0.69	0.44	42.58
4 - 6 ft	0.17	0.18	0.24	2.07	5.77	3.91	3.06	2.80	5.34	5.71	2.27	0.12	0.20	0.55	0.35	0.20	32.92
6 - 8 ft	0.03	0.07	0.17	1.44	1.66	1.27	0.70	0.92	2.31	2.53	0.46	0.05	0.09	0.06	0.01	0.03	11.81
8 - 10 ft	•	0.01	0.06	0.40	1.07	0.31	0.20	0.35	0.82	0.83	0.06	0.01	0.01	0.02	0.01	•	4.15
10 - 12 ft	•	•	0.02	0.06	0.61	0.14	0.01	0.03	0.26	0.15	0.01	•	•	•	•	•	1.30
12 - 14 ft	•	•	•	0.03	0.18	0.08	•	0.01	0.05	0.01	•	•	•	•	•	•	0.37
14 - 16 ft	•	•	•	0.01	0.06	0.01	0.02	•	•	•	•	•	•	•	•	•	0.10
16 - 18 ft	•	•	•	•	•	•	•	•	•	•	•	•	•	•	•	•	•
> 18 ft	•	•	•	•	•	•	•	•	•	•	•	•	•	•	•	•	•
Total	0.44	0.48	0.74	6.79	17.47	13.29	11.84	7.86	15.05	15.14	5.97	0.89	0.76	1.37	1.15	0.76	100.00

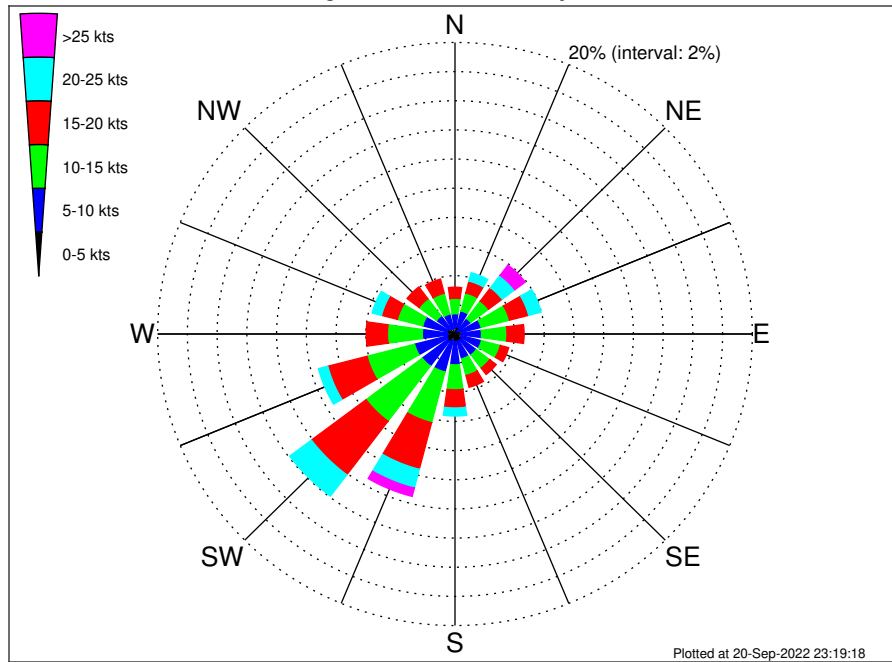
OCS-A 0537 Climatological WavePeriod Rose for May: 1979 - 2015



Joint Frequency Distribution Table

	N	NNE	NE	ENE	E	ESE	SE	SSE	S	SSW	SW	WSW	W	WNW	NW	NNW	Total
calm
1 - 2 sec
2 - 4 sec	0.18	0.18	0.16	0.13	0.12	0.05	0.12	0.17	0.14	0.39	1.21	0.63	0.38	0.45	0.55	0.45	5.30
4 - 6 sec	0.25	0.30	0.43	1.52	1.14	0.89	0.71	1.07	2.13	7.79	4.50	0.25	0.38	0.92	0.60	0.31	23.19
6 - 8 sec	.	.	0.15	2.75	4.68	2.82	3.30	4.86	10.26	6.79	0.26	35.88
8 - 10 sec	.	.	.	2.37	9.28	8.16	5.96	1.65	2.50	0.17	30.08
10 - 12 sec	.	.	.	0.02	2.17	1.04	0.81	0.12	0.02	4.18
12 - 14 sec	0.08	0.31	0.39	0.78
14 - 16 sec	0.03	0.44	0.47
18 - 20 sec	0.12	0.12
22 - 24 sec
Total	0.44	0.48	0.74	6.79	17.47	13.29	11.84	7.86	15.05	15.14	5.97	0.89	0.76	1.37	1.15	0.76	100.00

OCS-A 0537 Climatological Wind Rose for May: 1979 - 2015



Joint Frequency Distribution Table

	N	NNE	NE	ENE	E	ESE	SE	SSE	S	SSW	SW	WSW	W	WNW	NW	NNW	Total
calm	0.01	•	•	0.01	0.01	•	•	0.01	0.01	0.05	0.01	0.03	0.01	0.01	•	•	0.17
0 - 5 kts	0.39	0.52	0.25	0.45	0.44	0.44	0.53	0.51	0.51	0.40	0.62	0.53	0.49	0.53	0.45	0.39	7.45
5 - 10 kts	0.99	1.12	1.07	1.36	1.33	1.40	1.27	1.24	1.60	2.24	2.13	2.24	1.69	1.70	1.10	1.02	23.52
10 - 15 kts	1.06	1.28	1.51	1.97	1.71	1.31	1.13	1.19	1.71	3.59	4.73	3.30	2.35	1.76	1.47	1.47	31.54
15 - 20 kts	0.76	0.84	1.14	1.33	1.15	0.58	0.55	0.83	1.24	3.30	4.60	2.73	1.43	1.10	1.01	1.00	23.60
20 - 25 kts	0.36	0.59	1.07	0.86	0.41	0.14	0.22	0.26	0.55	1.33	1.83	0.64	0.29	0.64	0.45	0.37	10.02
25 - 30 kts	0.15	0.23	0.70	0.40	0.06	0.03	•	0.03	0.10	0.47	0.40	0.02	0.13	0.09	0.08	0.06	2.97
30 - 35 kts	0.05	0.08	0.15	0.05	0.01	•	0.01	0.02	0.02	0.12	0.02	•	•	0.03	0.01	•	0.58
35 - 40 kts	•	0.03	0.02	0.03	0.05	•	•	0.01	•	•	•	•	•	•	•	•	0.15
40 - 45 kts	•	•	•	•	•	•	•	•	•	•	•	•	•	•	•	•	•
45 - 50 kts	•	•	•	•	•	•	•	•	•	•	•	•	•	•	•	•	•
Total	3.76	4.68	5.91	6.47	5.18	3.90	3.71	4.11	5.75	11.51	14.35	9.51	6.39	5.88	4.58	4.32	100.00