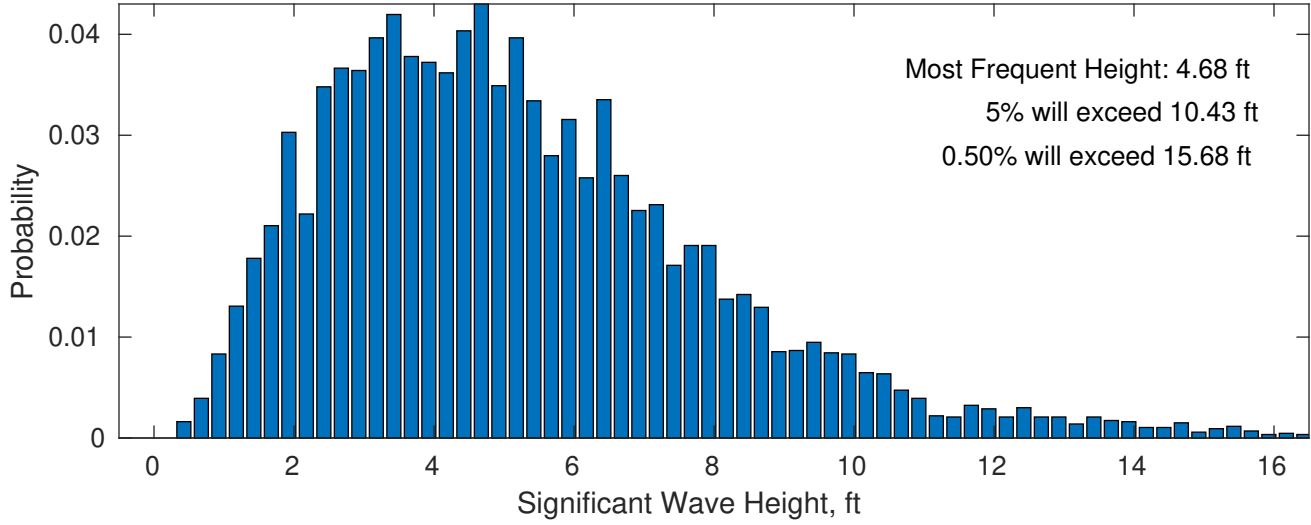
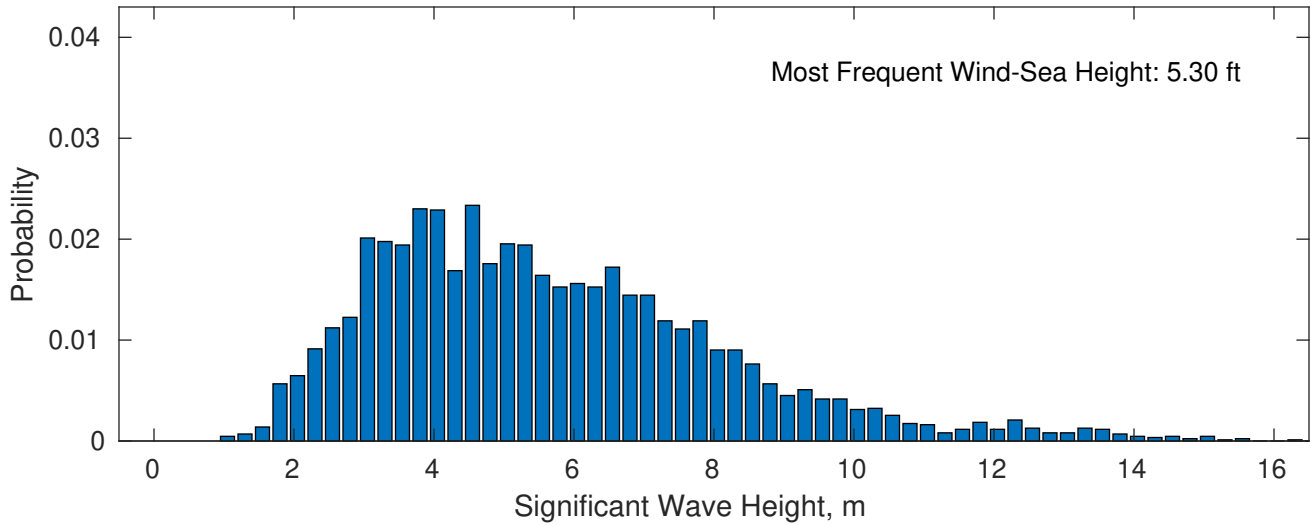


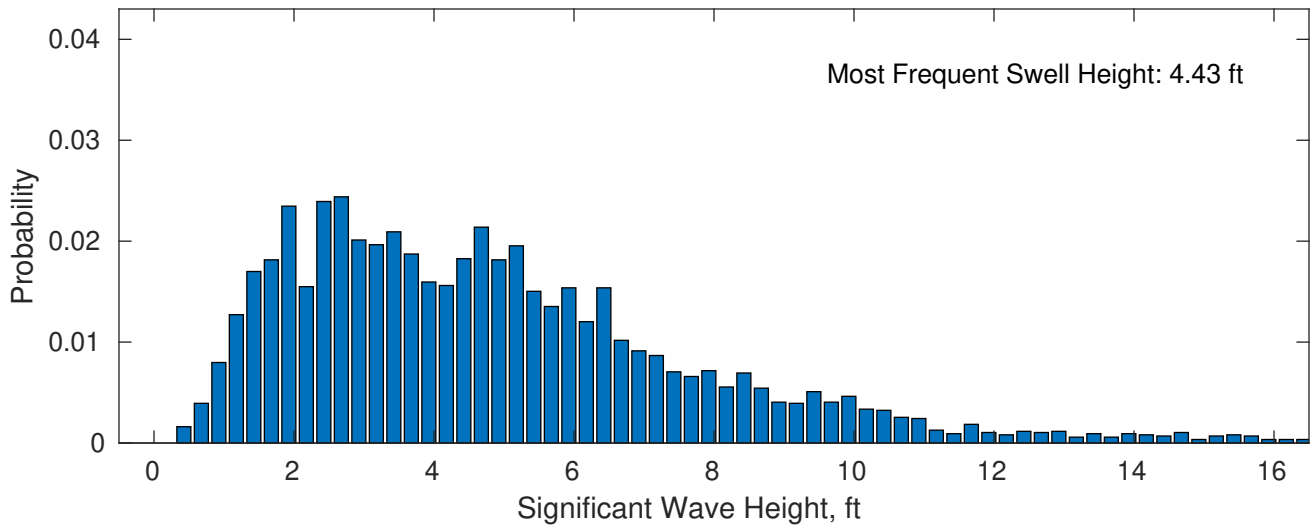
November Wave Height PDF: 1979 - 2015



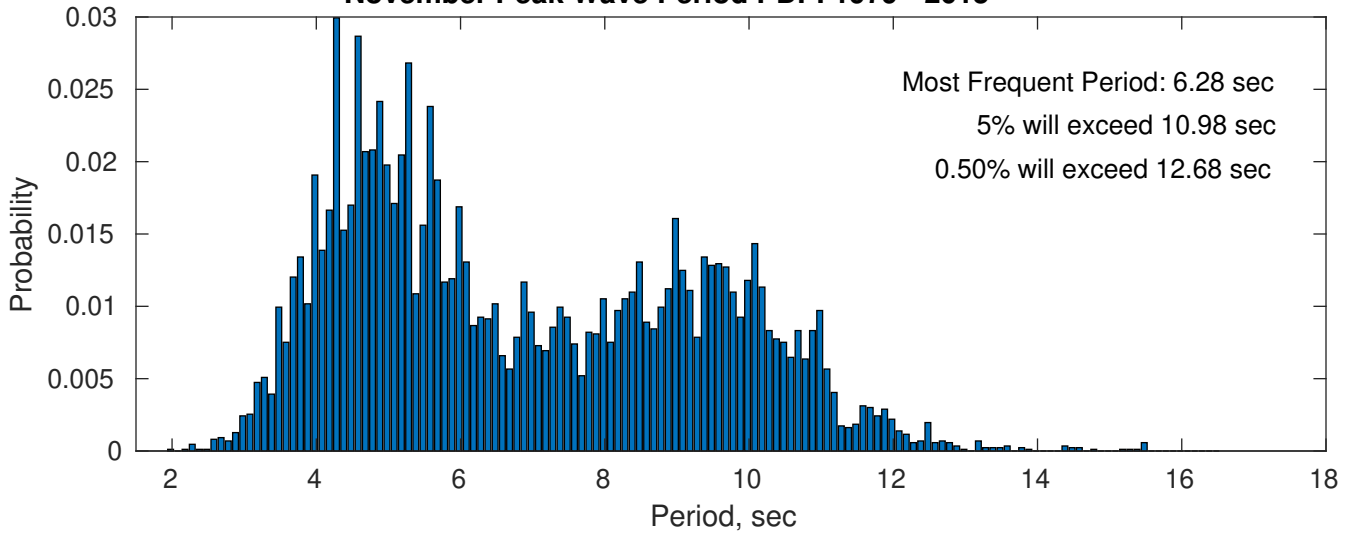
Wind-Sea: 47.09%



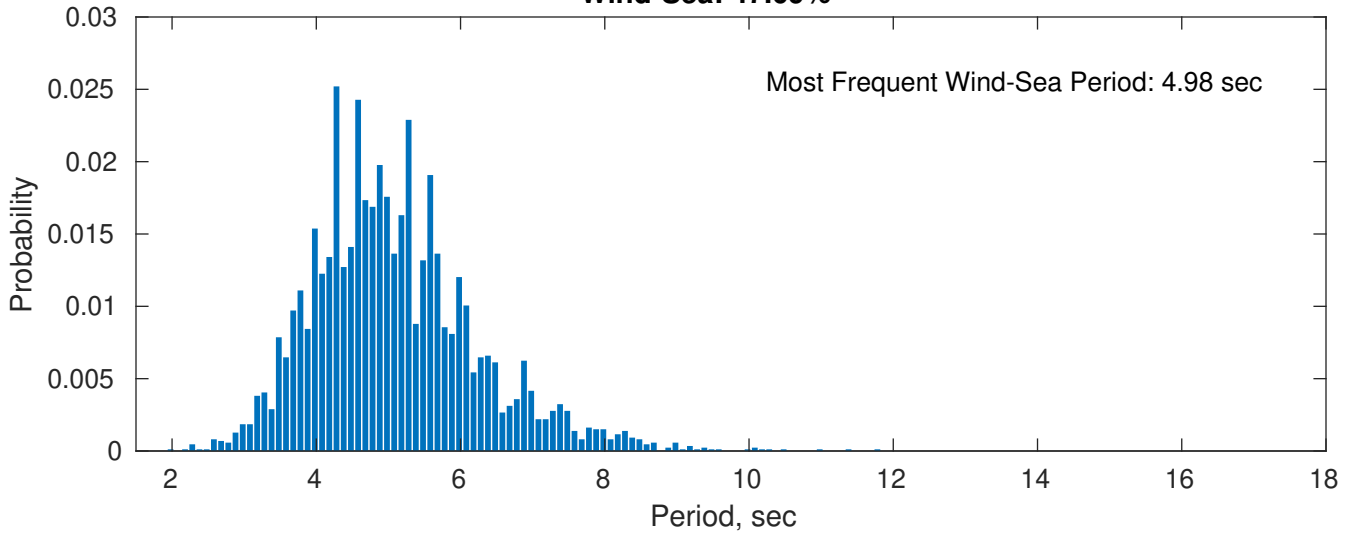
Swell: 52.91%



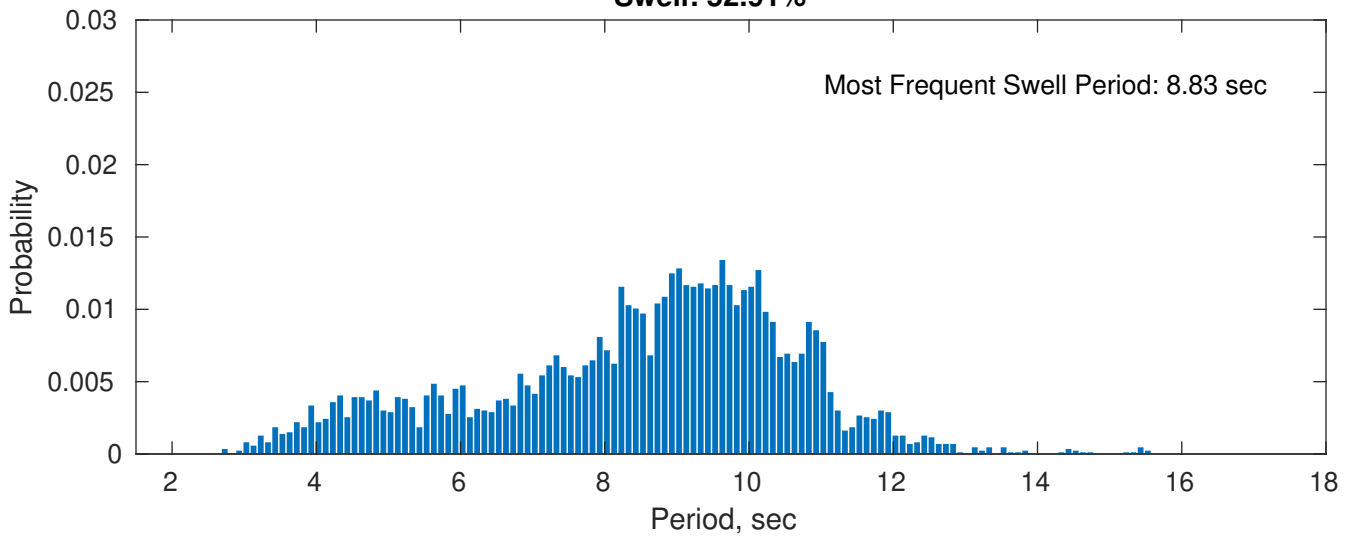
November Peak Wave Period PDF: 1979 - 2015



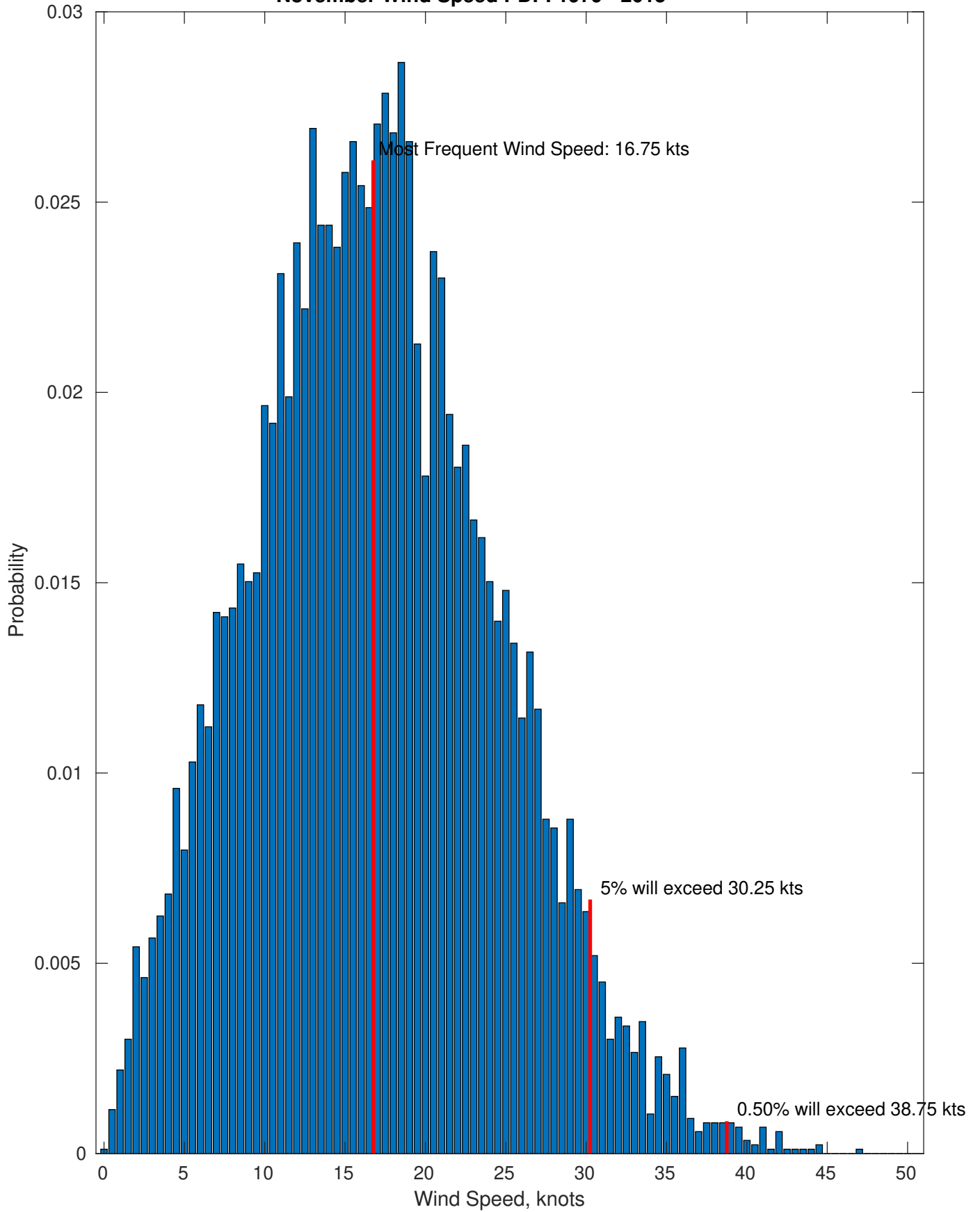
Wind-Sea: 47.09%



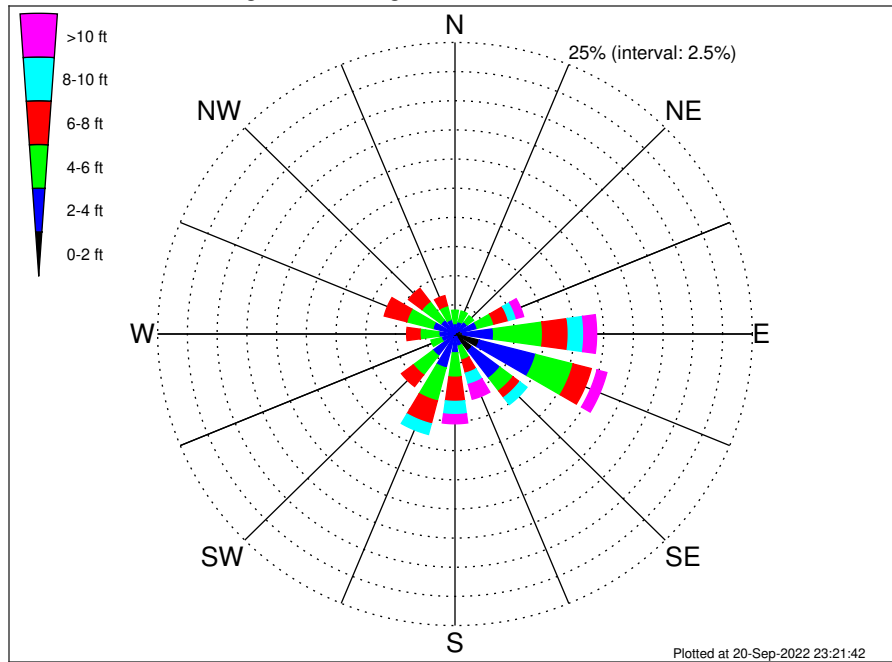
Swell: 52.91%



November Wind Speed PDF: 1979 - 2015



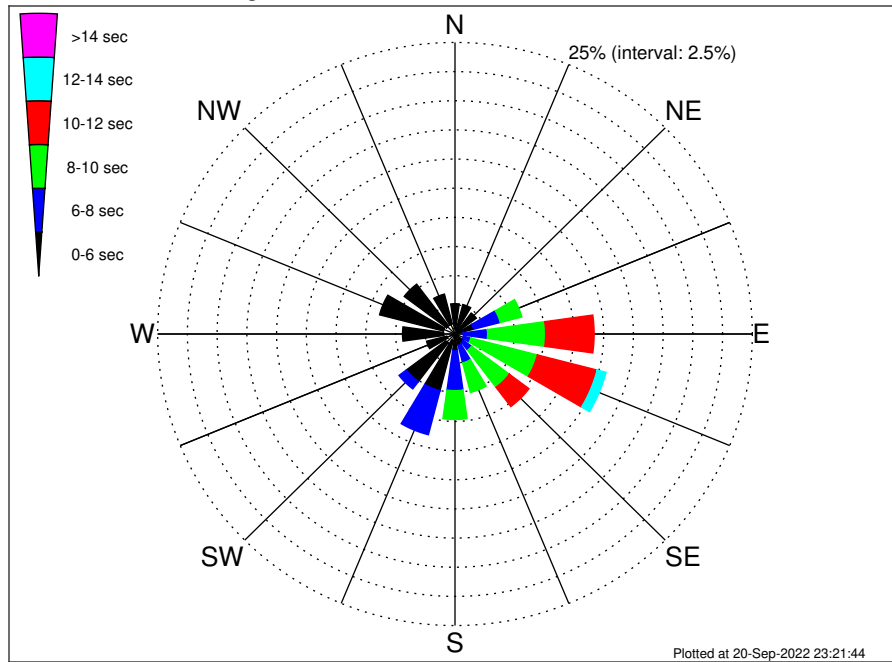
OCS-A 0537 Climatological WaveHeight Rose for November: 1979 - 2015



Joint Frequency Distribution Table

	N	NNE	NE	ENE	E	ESE	SE	SSE	S	SSW	SW	WSW	W	WNW	NW	NNW	Total
calm	•	0.01	0.01	0.15	0.05	0.15	0.32	0.03	0.06	0.07	•	•	•	•	•	•	0.86
1 - 2 ft	0.02	0.08	0.18	0.39	0.60	1.97	1.48	0.22	0.18	0.38	0.25	0.06	0.27	0.14	0.10	0.14	6.47
2 - 4 ft	0.88	1.01	1.09	1.39	2.60	4.90	2.92	0.82	1.38	2.55	2.08	1.13	1.10	1.79	1.39	1.13	28.16
4 - 6 ft	1.14	0.94	0.67	1.45	4.12	3.25	1.38	1.23	2.09	2.92	2.06	0.90	1.58	2.27	2.00	1.24	29.23
6 - 8 ft	0.46	0.53	0.50	1.26	2.16	1.57	0.72	1.17	2.07	2.02	1.25	0.34	1.12	1.95	1.41	0.89	19.42
8 - 10 ft	0.09	0.13	0.32	0.69	1.31	0.50	0.76	0.99	1.13	0.95	0.24	0.20	0.62	0.61	0.59	0.20	9.34
10 - 12 ft	•	0.02	0.07	0.34	0.55	0.30	0.16	0.74	0.46	0.25	•	0.01	0.16	0.17	0.27	0.03	3.55
12 - 14 ft	0.01	•	0.01	0.21	0.32	0.16	0.13	0.27	0.23	0.17	0.01	0.05	0.05	0.05	•	0.01	1.68
14 - 16 ft	•	•	•	0.07	0.15	0.18	0.13	0.20	0.06	0.03	•	0.01	•	•	•	•	0.83
16 - 18 ft	•	•	•	0.02	0.01	0.09	0.03	0.07	0.02	•	•	•	•	•	•	•	0.25
> 18 ft	•	•	•	•	0.03	0.12	•	0.05	0.01	•	•	•	•	•	•	•	0.21
Total	2.61	2.72	2.86	5.97	11.91	13.19	8.03	5.78	7.70	9.36	5.90	2.69	4.90	6.98	5.76	3.64	100.00

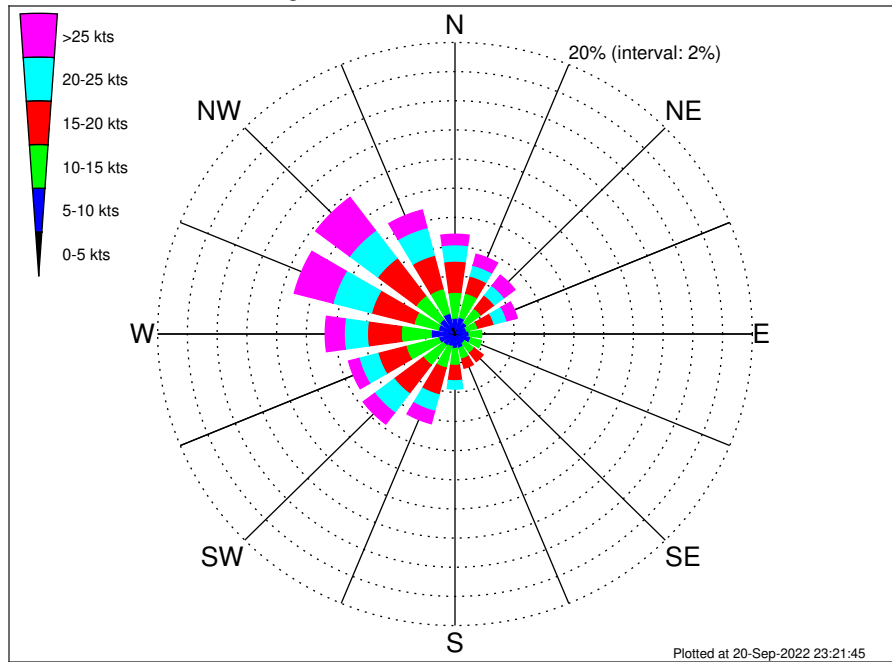
OCS-A 0537 Climatological WavePeriod Rose for November: 1979 - 2015



Joint Frequency Distribution Table

	N	NNE	NE	ENE	E	ENE	SE	SSE	S	SSW	SW	WSW	W	WNW	NW	NNW	Total
calm	•	•	•	•	•	•	•	•	•	•	•	•	•	•	•	•	•
1 - 2 sec	•	•	•	•	•	•	•	•	0.01	•	•	•	•	•	•	•	0.01
2 - 4 sec	0.46	0.36	0.27	0.12	0.10	0.22	0.14	0.22	0.24	0.58	0.96	0.71	0.96	1.01	0.88	0.88	8.09
4 - 6 sec	2.14	2.25	1.99	1.50	0.59	0.52	0.74	0.77	1.19	4.44	4.15	1.77	3.46	5.55	4.47	2.66	38.20
6 - 8 sec	0.01	0.10	0.60	2.31	2.05	0.64	0.87	1.56	3.41	3.91	0.79	0.22	0.49	0.43	0.40	0.10	17.88
8 - 10 sec	•	•	•	1.87	4.88	5.78	3.98	2.62	2.47	0.44	•	•	•	•	•	•	22.05
10 - 12 sec	•	•	•	0.16	4.08	5.19	2.07	0.58	0.37	•	•	•	•	•	•	•	12.45
12 - 14 sec	•	•	•	•	0.20	0.77	0.14	0.02	•	•	•	•	•	•	•	•	1.13
14 - 16 sec	•	•	•	•	0.01	0.07	0.10	•	•	•	•	•	•	•	•	•	0.18
18 - 20 sec	•	•	•	•	•	•	•	•	•	•	•	•	•	•	•	•	•
22 - 24 sec	•	•	•	•	•	•	•	•	•	•	•	•	•	•	•	•	•
Total	2.61	2.72	2.86	5.97	11.91	13.19	8.03	5.78	7.70	9.36	5.90	2.69	4.90	6.98	5.76	3.64	100.00

OCS-A 0537 Climatological Wind Rose for November: 1979 - 2015



Joint Frequency Distribution Table

	N	NNE	NE	ENE	E	ESE	SE	SSE	S	SSW	SW	WSW	W	WNW	NW	NNW	Total
calm	•	0.01	0.01	•	0.01	0.01	0.01	0.01	0.01	0.01	•	0.02	0.01	•	•	•	0.13
0 - 5 kts	0.30	0.36	0.24	0.14	0.27	0.30	0.17	0.30	0.22	0.21	0.20	0.22	0.46	0.20	0.27	0.51	4.36
5 - 10 kts	0.80	0.82	0.73	0.67	0.68	0.77	0.62	0.69	0.76	0.67	0.79	0.89	1.13	0.97	1.01	0.96	12.97
10 - 15 kts	1.77	1.70	1.20	0.79	0.83	0.75	0.82	0.77	1.17	1.53	1.69	2.28	2.01	1.69	2.01	1.75	22.75
15 - 20 kts	2.14	1.21	1.13	1.12	0.49	0.46	0.74	0.65	1.05	1.90	2.45	1.94	2.28	2.95	3.23	2.36	26.09
20 - 25 kts	1.12	0.76	0.83	0.89	0.34	0.21	0.38	0.43	0.57	1.17	1.64	1.32	1.56	2.68	2.38	1.97	18.24
25 - 30 kts	0.52	0.44	0.43	0.37	0.18	0.15	0.14	0.25	0.35	0.65	0.81	0.59	0.96	1.75	1.82	1.02	10.42
30 - 35 kts	0.13	0.14	0.37	0.21	0.03	0.08	0.07	0.14	0.08	0.17	0.15	0.12	0.18	0.67	0.84	0.18	3.57
35 - 40 kts	0.05	0.15	0.10	0.14	•	0.02	0.02	0.07	0.05	0.05	0.01	0.02	0.08	0.20	0.17	0.05	1.18
40 - 45 kts	0.02	0.06	•	•	0.01	•	•	0.02	0.01	0.01	•	•	0.05	0.07	0.01	•	0.27
45 - 50 kts	•	•	•	•	0.01	•	•	0.01	•	•	•	•	•	•	•	•	0.02
Total	6.84	5.65	5.05	4.32	2.86	2.76	2.98	3.35	4.27	6.36	7.73	7.40	8.73	11.17	11.73	8.79	100.00