

## OCS-A 0537 - October

Latitude: 39.96 N Longitude: 72.73 W

### Weather Days

Wave Height > 3.0 ft Mean: 23.0 days Range: 20.7 - 25.2 days p50:23 days p75:22.5 days p90:21 days  
Wave Height > 4.0 ft Mean: 17.0 days Range: 14.1 - 19.9 days p50:17.5 days p75:16 days p90:13.5 days  
Wave Height > 5.0 ft Mean: 12.0 days Range: 9.3 - 14.7 days p50:12 days p75:10.5 days p90:9 days  
Wind Speed > 20.0 knots Mean: 7.3 days Range: 5.5 - 9.1 days p50:7.5 days p75:7 days p90:5 days  
Wind Speed > 25.0 knots Mean: 2.6 days Range: 1.5 - 3.7 days p50:3 days p75:2 days p90:1 days  
Wind Speed > 30.0 knots Mean: 0.8 days Range: 0.3 - 1.4 days p50:1 days p75:0.5 days p90:0.5 days

### Working Window Probability

Wave Height < 3.0 ft	3 days or longer: 11%
	5 days or longer: 0%
	7 days or longer: 0%
Wave Height < 4.0 ft	3 days or longer: 25%
	5 days or longer: 4%
	7 days or longer: 1%
Wave Height < 5.0 ft	3 days or longer: 38%
	5 days or longer: 9%
	7 days or longer: 4%

### Waves

Mean Height: 4 - 6 ft

The wave heights will occasionally reach 14 - 16 ft, but rarely higher.

Mean Period: 6 - 8 sec

The wave periods will occasionally reach 12 - 14 sec, but rarely longer.

Principle Direction, from: E

WindSea/Swell: 37% / 63%

### Winds

Mean Speed: 10 - 15 kts

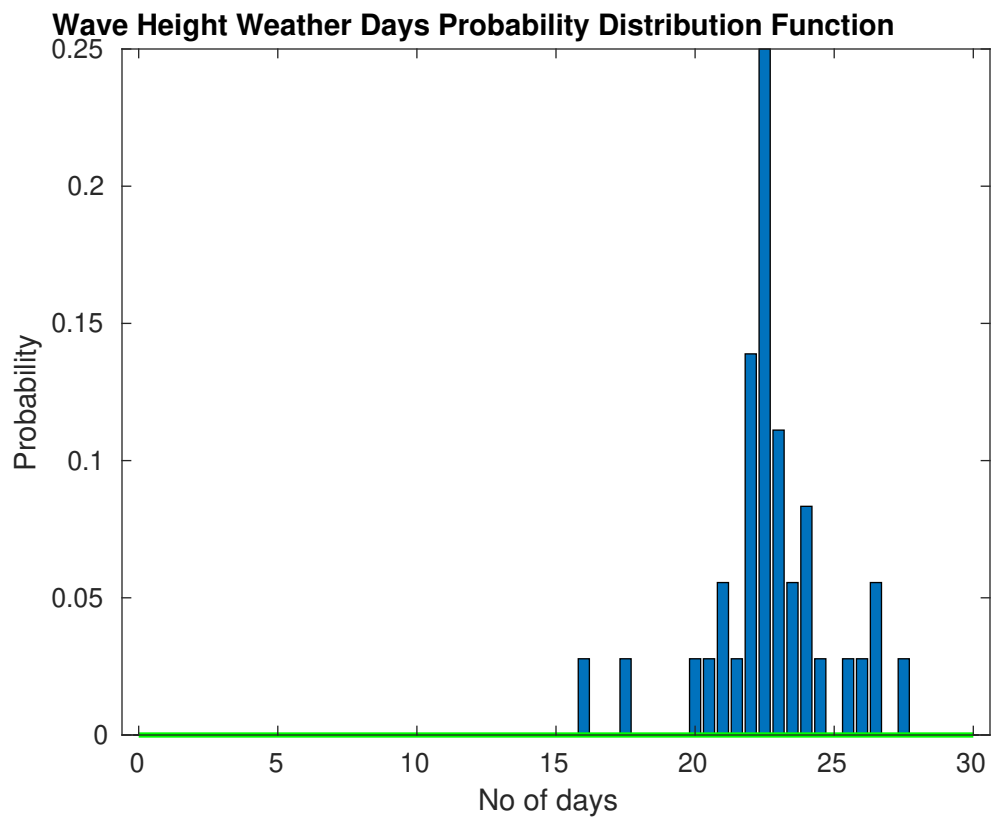
The winds will occasionally reach 35 - 40 kts, but rarely greater.

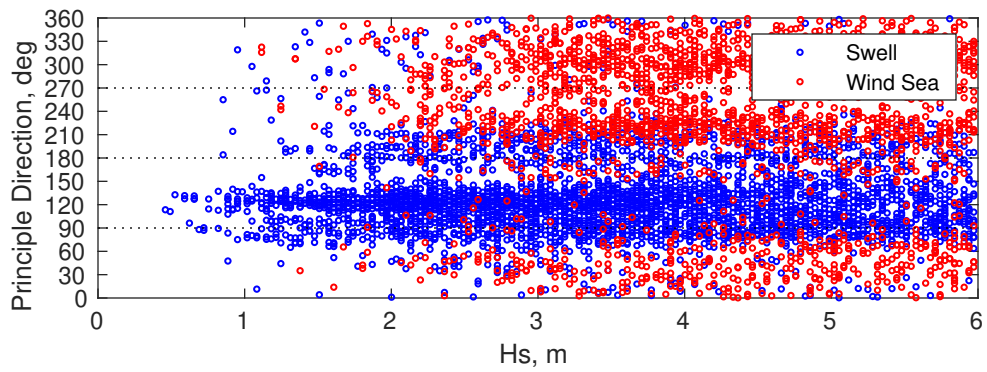
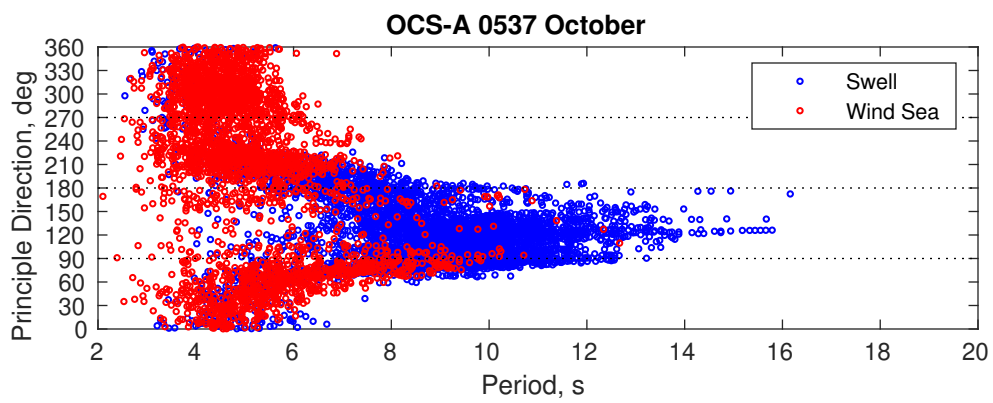
Principle Direction, from: WNW

### Severe Storms

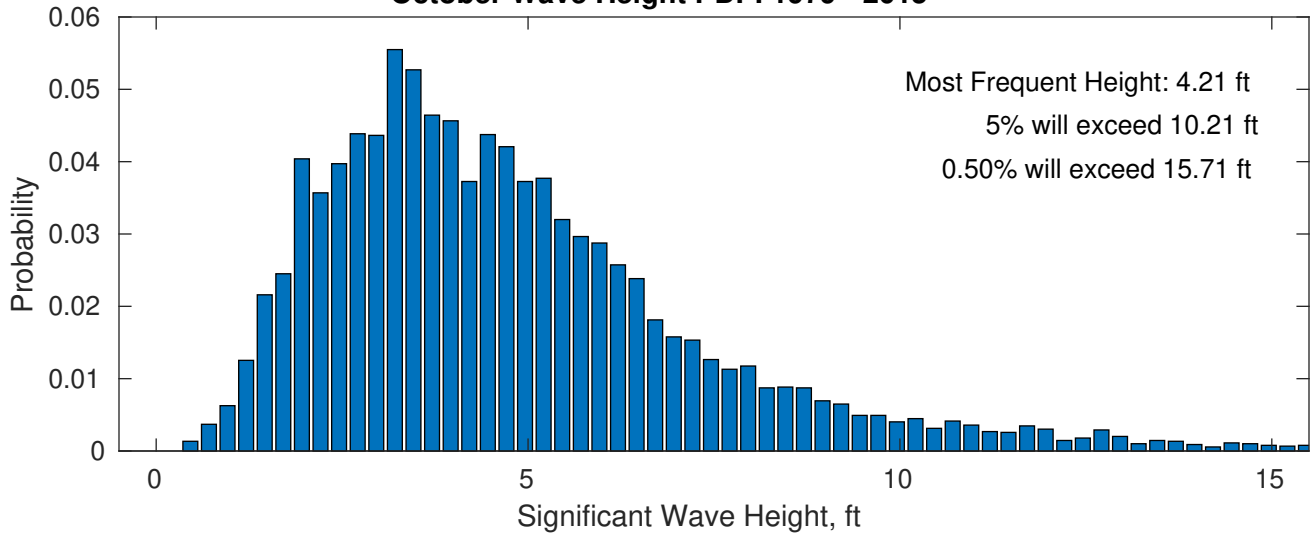
There is a 42 % chance of a storm occurring in the month with winds peaking above 34 kts.

There is a 56 % chance of a storm occurring in the month with waves peaking at 4m (13 ft) or greater.

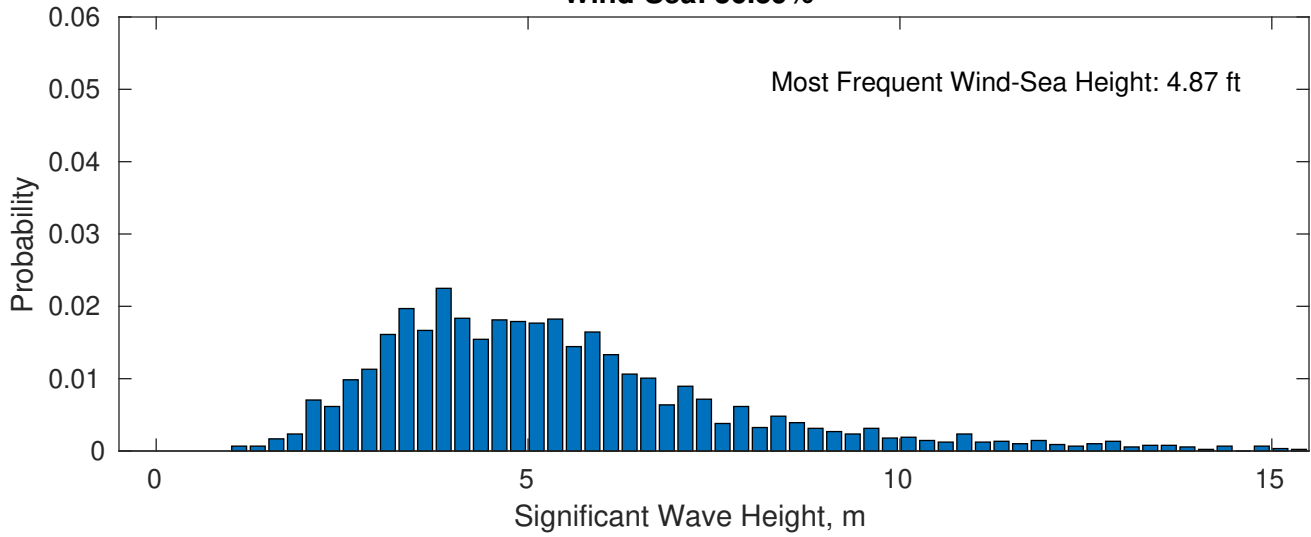




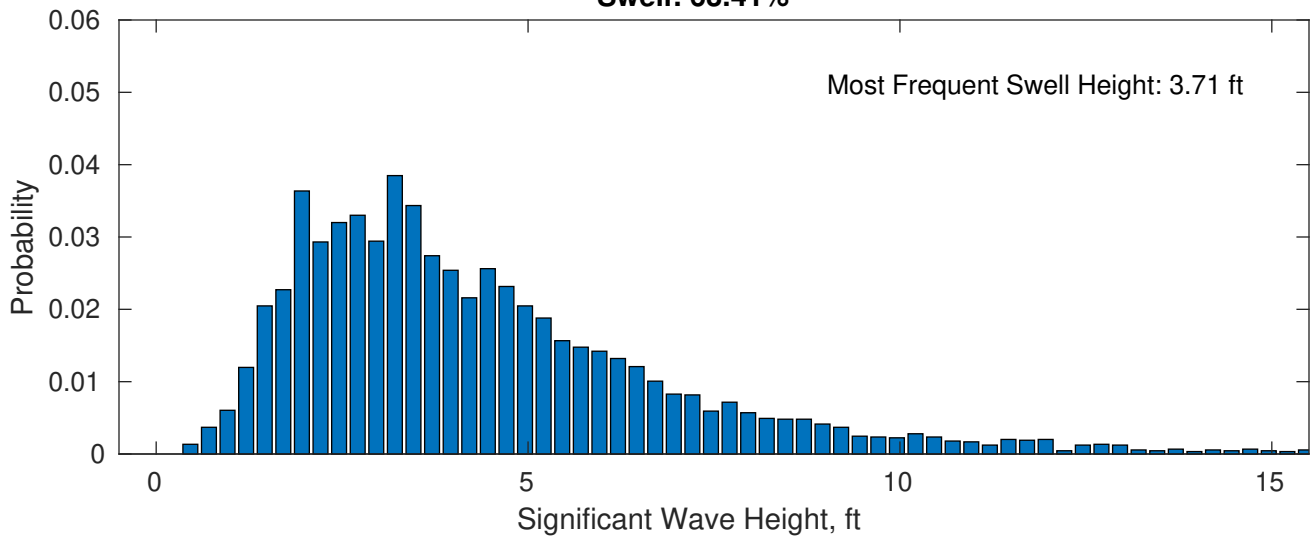
**October Wave Height PDF: 1979 - 2015**



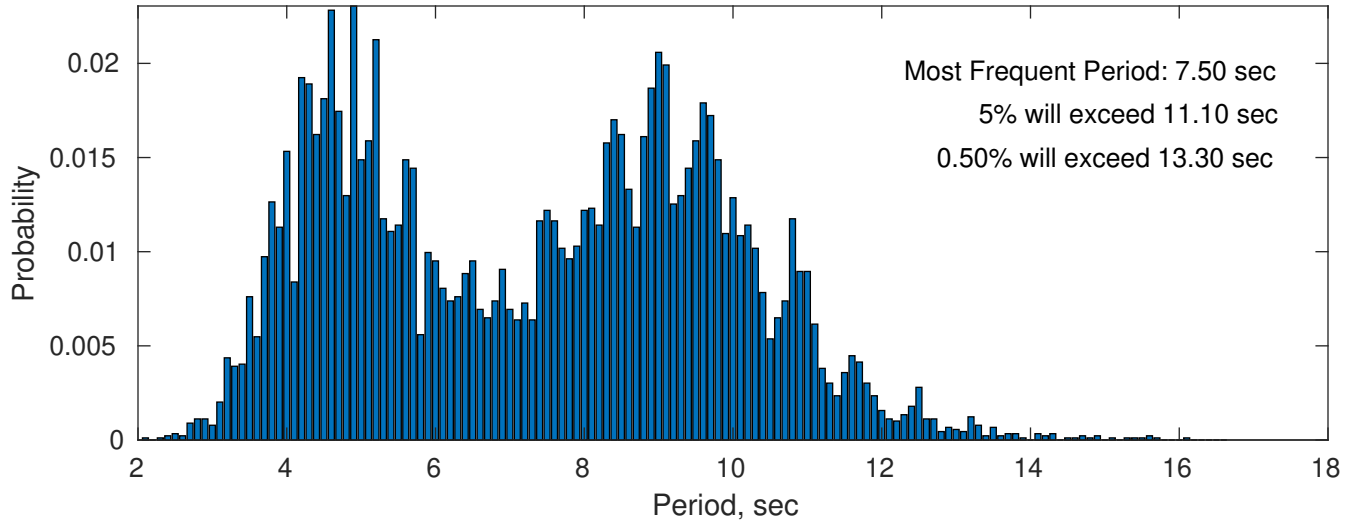
**Wind-Sea: 36.59%**



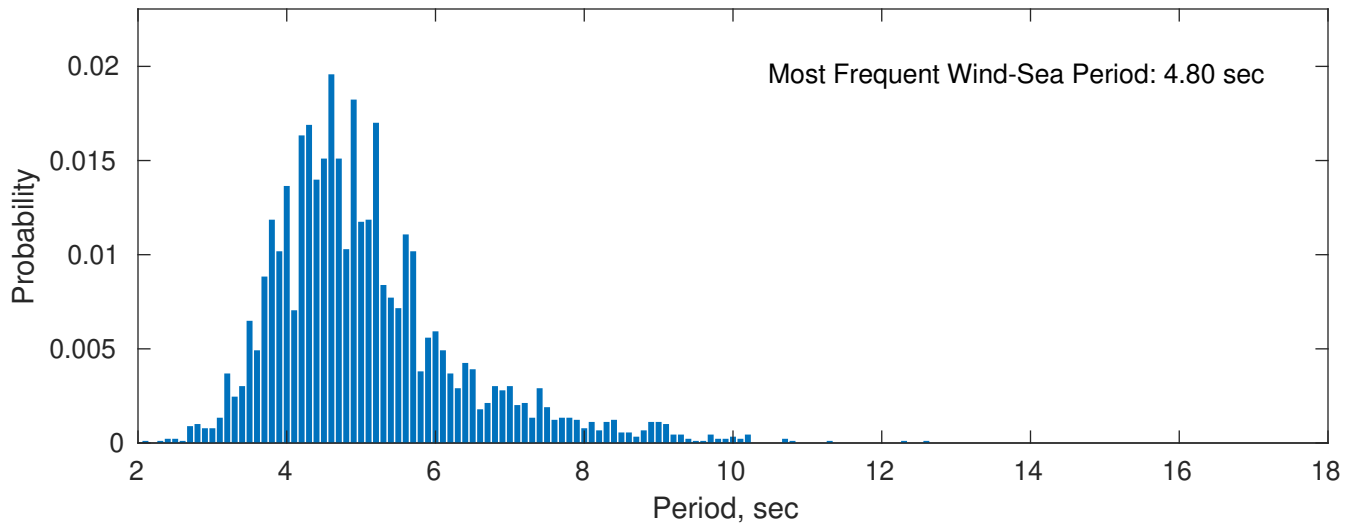
**Swell: 63.41%**



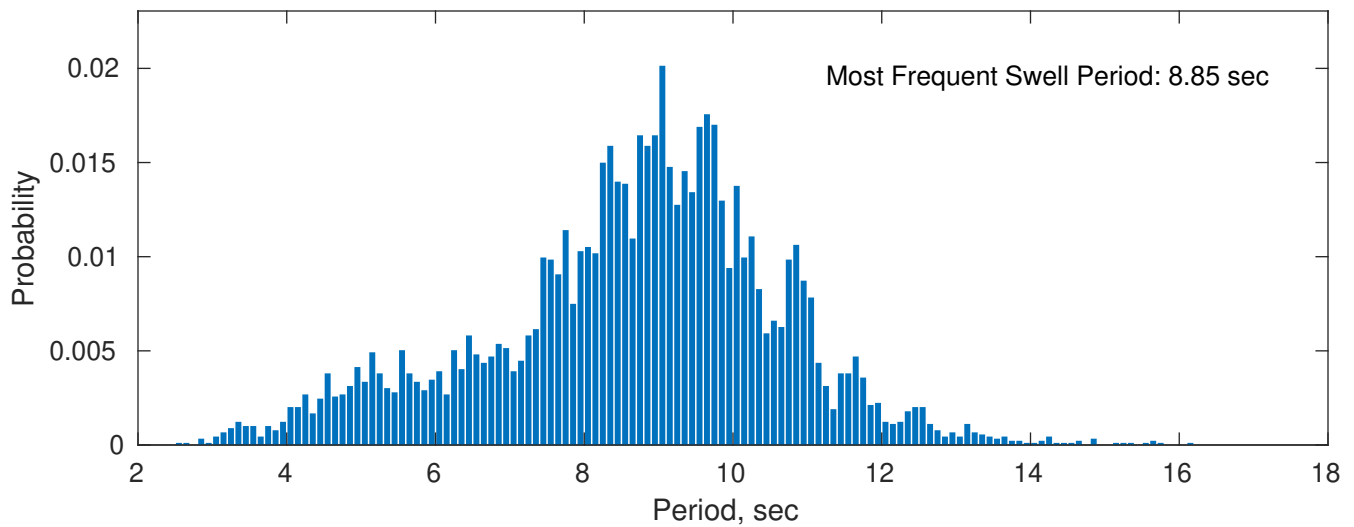
**October Peak Wave Period PDF: 1979 - 2015**



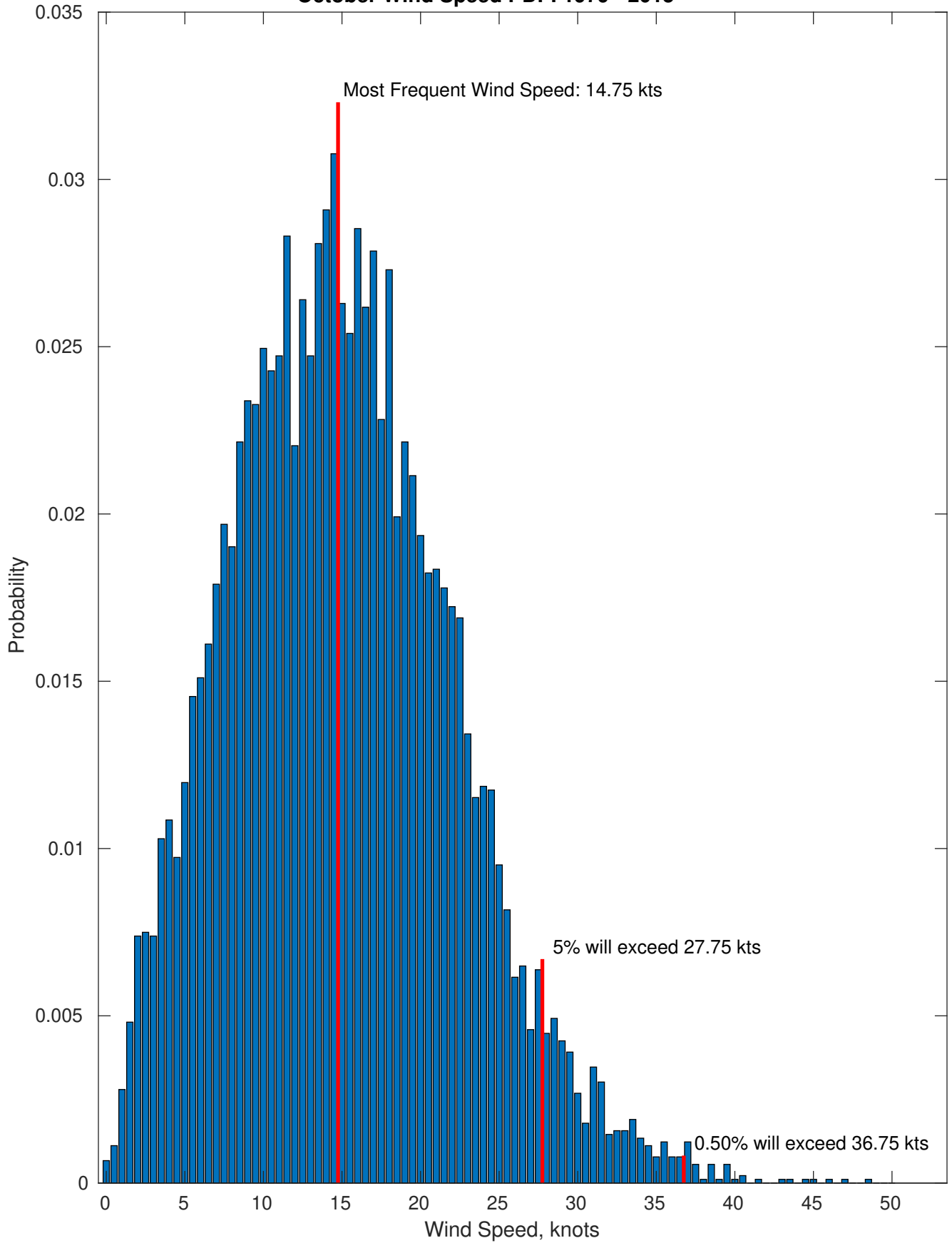
**Wind-Sea: 36.59%**



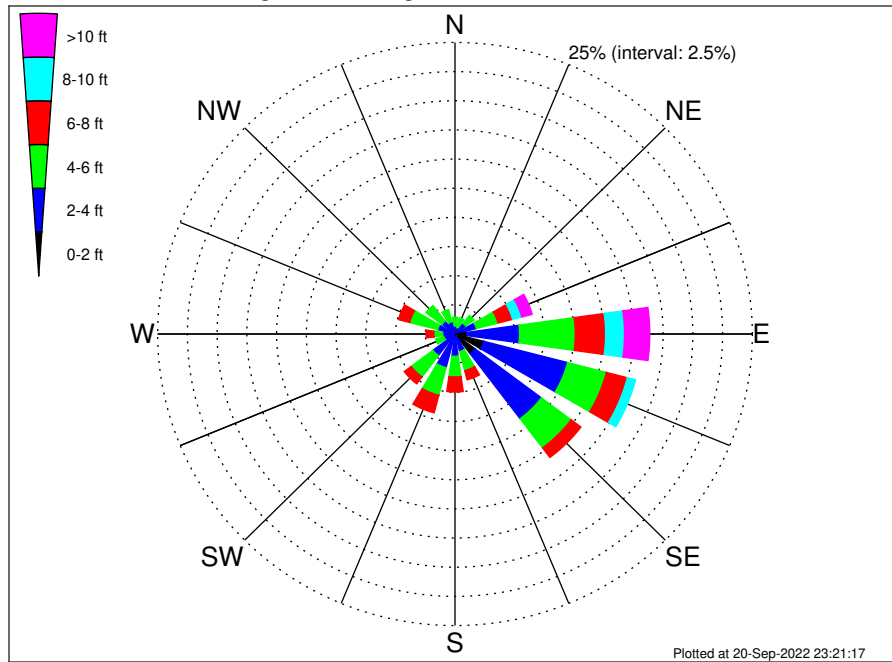
**Swell: 63.41%**



October Wind Speed PDF: 1979 - 2015



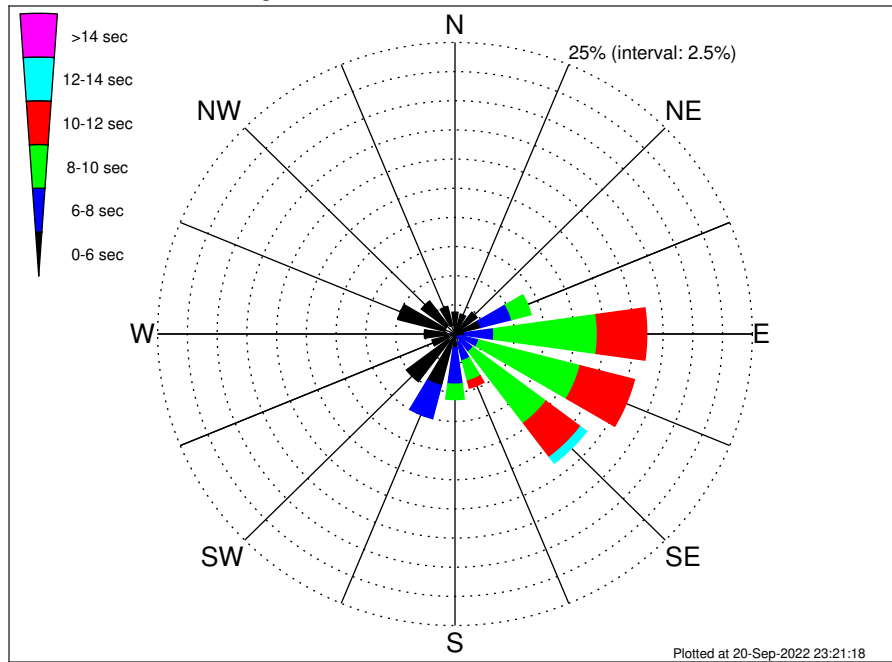
OCS-A 0537 Climatological WaveHeight Rose for October: 1979 - 2015



Joint Frequency Distribution Table

	N	NNE	NE	ENE	E	ESE	SE	SSE	S	SSW	SW	WSW	W	WNW	NW	NNW	Total
calm	•	•	0.01	0.01	0.07	0.17	0.21	•	0.01	•	0.01	0.01	•	•	0.01	•	0.51
1 - 2 ft	0.04	0.02	0.09	0.34	0.93	2.34	1.91	0.22	0.27	0.22	0.08	0.12	0.13	0.08	0.11	0.09	7.00
2 - 4 ft	0.65	0.60	1.03	1.51	4.43	7.27	6.97	1.33	1.63	2.75	2.23	0.82	0.91	1.43	1.26	1.00	35.82
4 - 6 ft	0.75	0.81	0.87	1.88	4.69	3.37	3.13	1.69	1.77	2.45	2.29	0.73	0.74	2.43	1.67	1.07	30.33
6 - 8 ft	0.37	0.29	0.53	1.26	2.55	1.82	1.03	0.82	1.30	1.56	0.74	0.29	0.66	0.97	0.46	0.28	14.93
8 - 10 ft	0.08	0.09	0.21	0.79	1.59	0.72	0.34	0.55	0.49	0.45	0.19	0.11	0.27	0.11	0.03	0.01	6.03
10 - 12 ft	0.03	0.01	0.06	0.55	1.07	0.20	0.19	0.27	0.13	0.11	0.06	0.10	0.01	0.02	•	•	2.82
12 - 14 ft	0.01	•	•	0.22	0.66	0.15	0.13	0.10	0.10	0.01	0.02	0.04	•	•	•	•	1.45
14 - 16 ft	•	•	•	0.11	0.21	0.13	0.03	0.07	0.08	•	•	•	•	•	•	•	0.64
16 - 18 ft	•	•	•	0.02	0.12	0.03	0.01	0.02	0.06	•	•	•	•	•	•	•	0.27
> 18 ft	•	•	•	•	0.06	0.01	0.06	0.02	0.04	•	•	•	•	•	•	•	0.19
Total	1.94	1.82	2.80	6.70	16.38	16.21	14.02	5.09	5.88	7.55	5.62	2.23	2.72	5.05	3.55	2.45	100.00

OCS-A 0537 Climatological WavePeriod Rose for October: 1979 - 2015

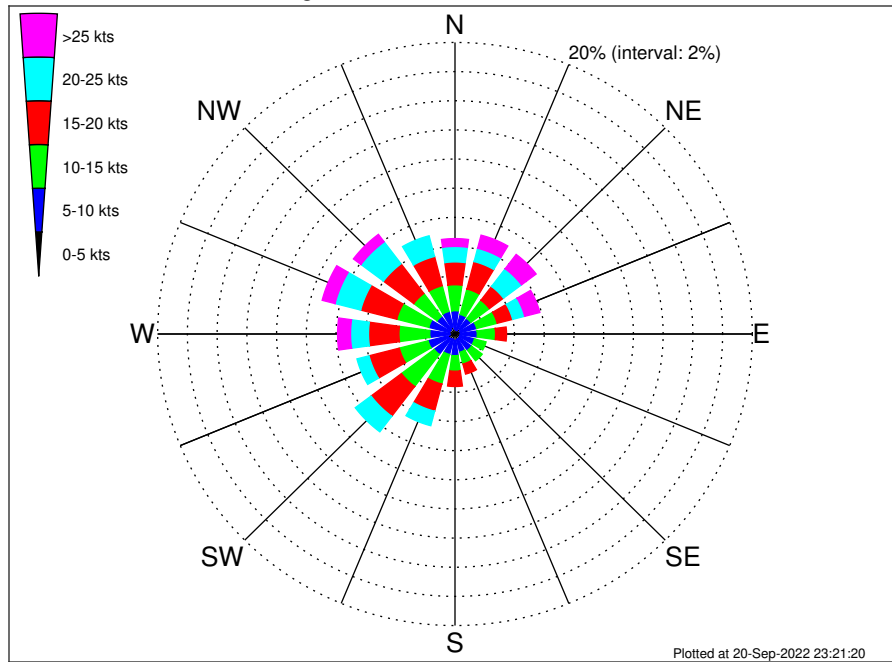


Joint Frequency Distribution Table

	N	NNE	NE	ENE	E	ESE	SE	SSE	S	SSW	SW	WSW	W	WNW	NW	NNW	Total
calm	•	•	•	•	•	•	•	•	•	•	•	•	•	•	•	•	•
1 - 2 sec	•	•	•	•	•	•	•	•	•	•	•	•	•	•	•	•	•
2 - 4 sec	0.32	0.17	0.36	0.13	0.13	0.06	0.07	0.15	0.18	0.43	0.72	0.58	0.70	0.90	0.94	0.77	6.60
4 - 6 sec	1.56	1.60	1.98	2.09	0.69	0.43	0.20	0.59	1.02	4.15	4.40	1.42	1.88	4.07	2.61	1.68	30.36
6 - 8 sec	0.06	0.06	0.46	2.70	2.44	1.58	1.61	1.62	3.11	2.92	0.49	0.22	0.13	0.08	•	•	17.48
8 - 10 sec	•	•	•	1.69	8.70	8.82	7.70	1.80	1.32	0.06	0.01	•	•	•	•	•	30.10
10 - 12 sec	•	•	•	0.09	4.15	4.71	3.64	0.64	0.19	•	•	•	•	•	•	•	13.41
12 - 14 sec	•	•	•	•	0.26	0.57	0.65	0.29	0.02	•	•	•	•	•	•	•	1.79
14 - 16 sec	•	•	•	•	•	0.06	0.16	•	0.03	•	•	•	•	•	•	•	0.25
18 - 20 sec	•	•	•	•	•	•	•	•	0.01	•	•	•	•	•	•	•	0.01
22 - 24 sec	•	•	•	•	•	•	•	•	•	•	•	•	•	•	•	•	•
Total	1.94	1.82	2.80	6.70	16.38	16.21	14.02	5.09	5.88	7.55	5.62	2.23	2.72	5.05	3.55	2.45	100.00



OCS-A 0537 Climatological Wind Rose for October: 1979 - 2015



Joint Frequency Distribution Table

	N	NNE	NE	ENE	E	ESE	SE	SSE	S	SSW	SW	WSW	W	WNW	NW	NNW	Total
calm	•	•	•	0.01	0.03	•	•	0.01	0.03	0.02	•	0.02	0.01	0.01	0.01	0.01	0.18
0 - 5 kts	0.34	0.27	0.45	0.35	0.36	0.34	0.38	0.37	0.41	0.36	0.44	0.46	0.34	0.38	0.37	0.48	6.08
5 - 10 kts	1.26	1.12	0.88	1.15	1.11	1.02	1.02	0.91	1.04	1.07	1.32	1.39	1.35	1.43	1.13	1.11	18.32
10 - 15 kts	1.78	1.80	1.57	1.42	1.23	0.81	0.90	0.84	1.06	2.09	2.75	2.00	2.07	2.23	1.97	1.82	26.34
15 - 20 kts	1.57	1.95	1.19	1.07	0.74	0.39	0.32	0.72	1.05	1.92	2.56	2.10	2.05	2.51	2.55	2.07	24.76
20 - 25 kts	1.06	0.94	1.52	0.84	0.47	0.30	0.17	0.31	0.48	1.03	1.33	0.84	1.21	1.78	1.89	1.47	15.64
25 - 30 kts	0.34	0.55	0.77	0.65	0.12	0.10	0.08	0.08	0.17	0.32	0.34	0.27	0.53	0.66	0.58	0.34	5.88
30 - 35 kts	0.11	0.27	0.29	0.34	0.07	0.04	0.01	0.03	0.07	0.08	0.11	0.04	0.25	0.20	0.06	0.02	1.99
35 - 40 kts	0.07	0.10	0.12	0.07	0.02	0.02	0.01	0.03	0.03	0.01	•	0.04	0.10	0.03	•	•	0.67
40 - 45 kts	0.02	0.01	0.02	•	•	•	•	•	0.01	•	•	•	•	•	•	0.01	0.08
45 - 50 kts	•	•	0.02	•	•	0.01	0.01	0.02	•	•	•	•	•	•	•	•	0.07
Total	6.55	7.00	6.84	5.90	4.15	3.03	2.90	3.32	4.36	6.91	8.85	7.17	7.90	9.23	8.56	7.33	100.00