

OCS-A 0537 - September

Latitude: 39.96 N Longitude: 72.73 W

Weather Days

Wave Height > 3.0 ft Mean: 22.3 days Range: 18.8 - 25.8 days p50:23 days p75:19.5 days p90:17 days
Wave Height > 4.0 ft Mean: 15.2 days Range: 11.3 - 19.2 days p50:15 days p75:12.5 days p90:10.5 days
Wave Height > 5.0 ft Mean: 9.7 days Range: 6.0 - 13.3 days p50:10 days p75:7 days p90:6.5 days
Wind Speed > 20.0 knots Mean: 4.0 days Range: 2.9 - 5.1 days p50:4.5 days p75:3 days p90:3 days
Wind Speed > 25.0 knots Mean: 1.1 days Range: 0.4 - 1.8 days p50:1 days p75:1 days p90:0.5 days
Wind Speed > 30.0 knots Mean: 0.3 days Range: 0.0 - 0.7 days p50:0.5 days p75:0.5 days p90:0.5 days

Working Window Probability

Wave Height < 3.0 ft	3 days or longer: 14%
	5 days or longer: 1%
	7 days or longer: 0%
Wave Height < 4.0 ft	3 days or longer: 34%
	5 days or longer: 4%
	7 days or longer: 0%
Wave Height < 5.0 ft	3 days or longer: 51%
	5 days or longer: 16%
	7 days or longer: 7%

Waves

Mean Height: 4 - 6 ft
The wave heights will occasionally reach 12 - 14 ft, but rarely higher.
Mean Period: 8 - 10 sec
The wave periods will occasionally reach 14 - 16 sec, but rarely longer.
Principle Direction, from: ESE
WindSea/Swell: 22% / 78%

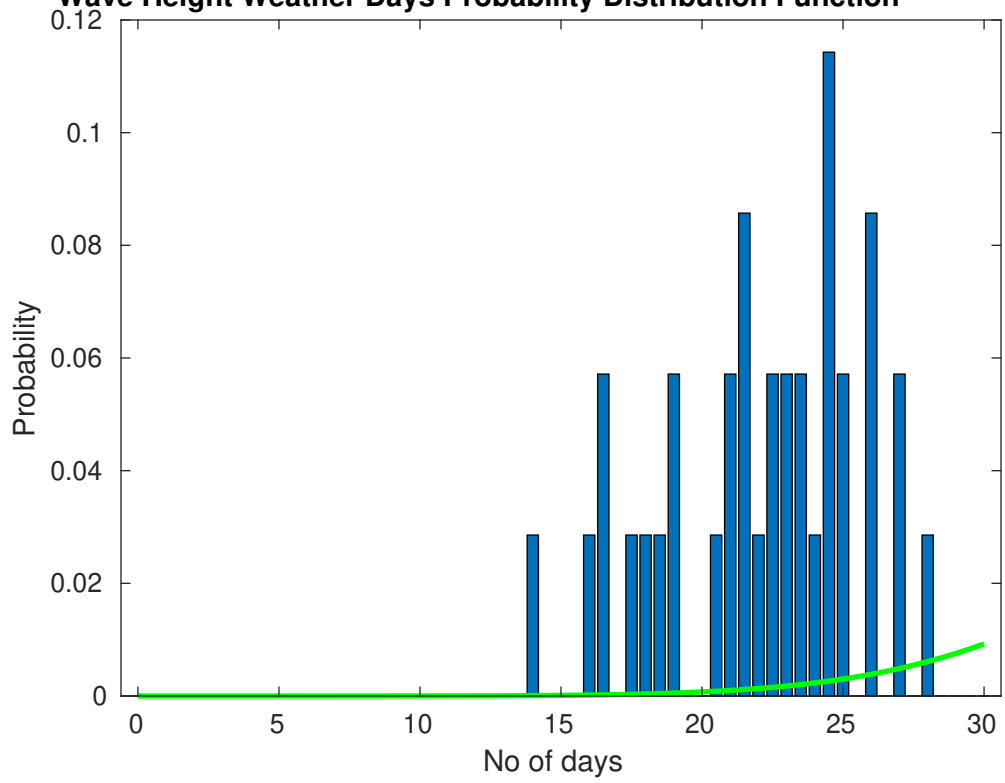
Winds

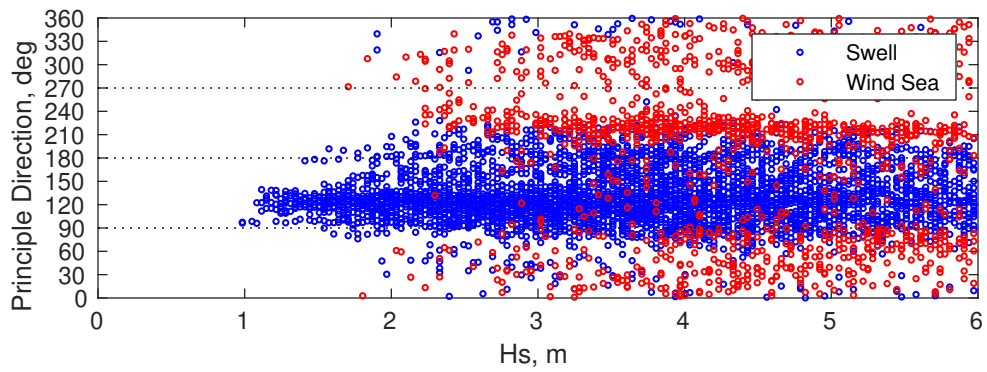
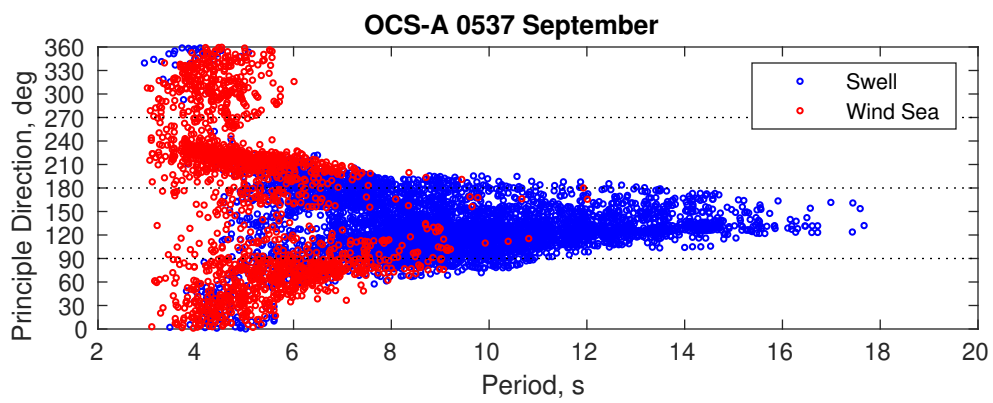
Mean Speed: 10 - 15 kts
The winds will occasionally reach 30 - 35 kts, but rarely greater.
Principle Direction, from: SW

Severe Storms

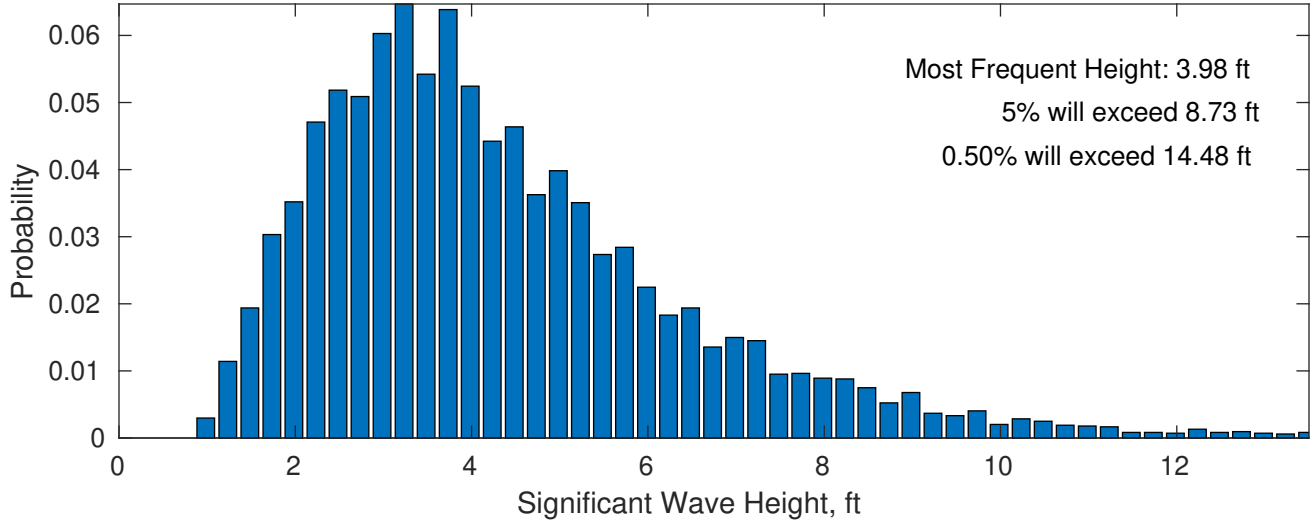
There is a 17 % chance of a storm occurring in the month with winds peaking above 34 kts.
There is a 40 % chance of a storm occurring in the month with waves peaking at 4m (13 ft) or greater.

Wave Height Weather Days Probability Distribution Function

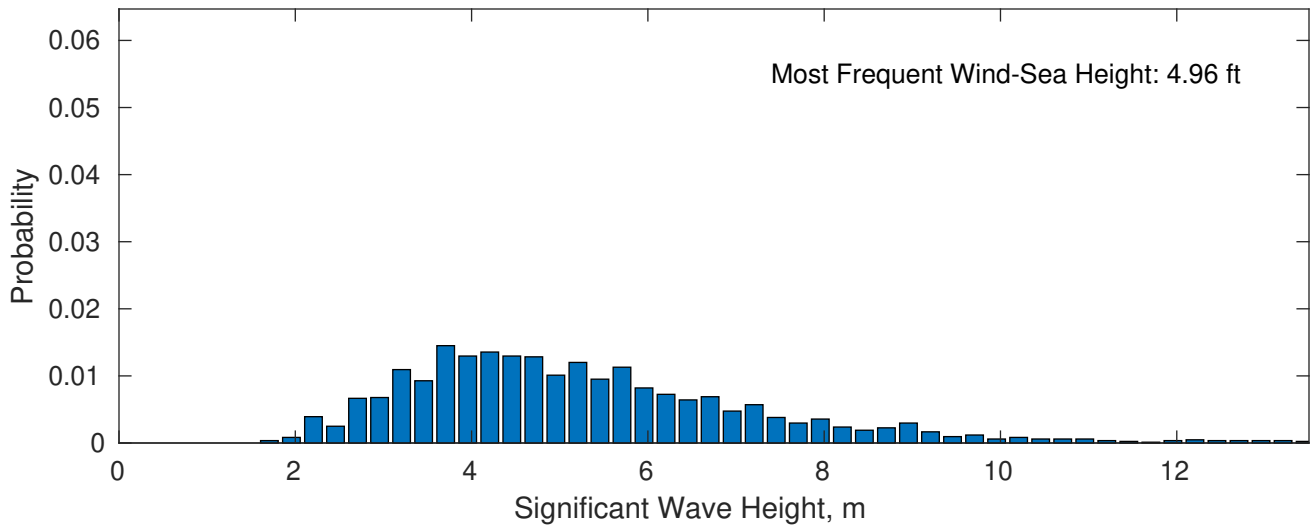




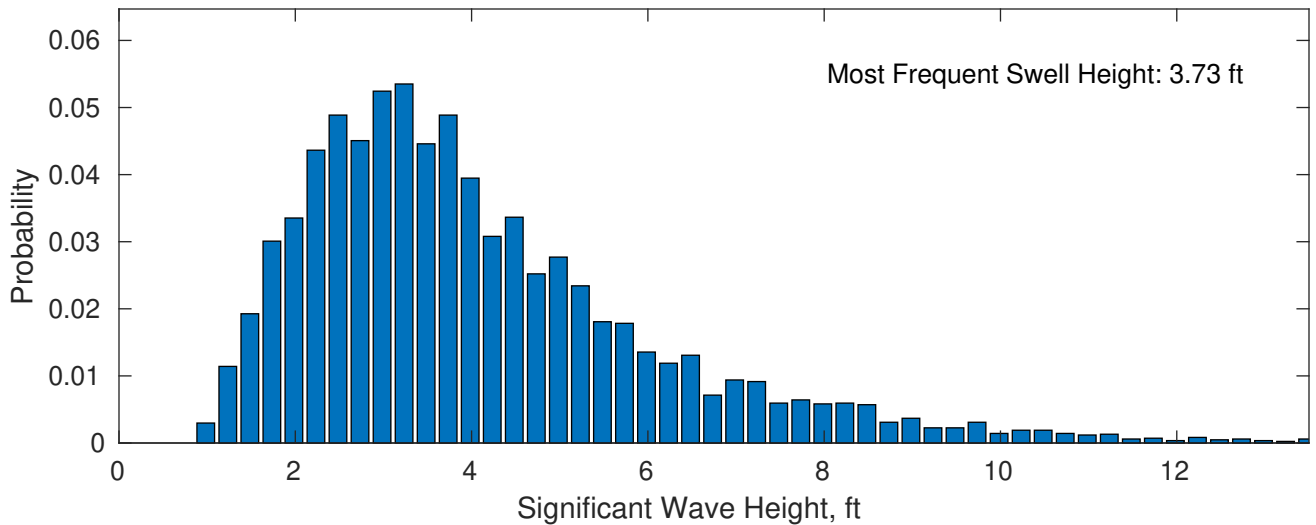
September Wave Height PDF: 1979 - 2015



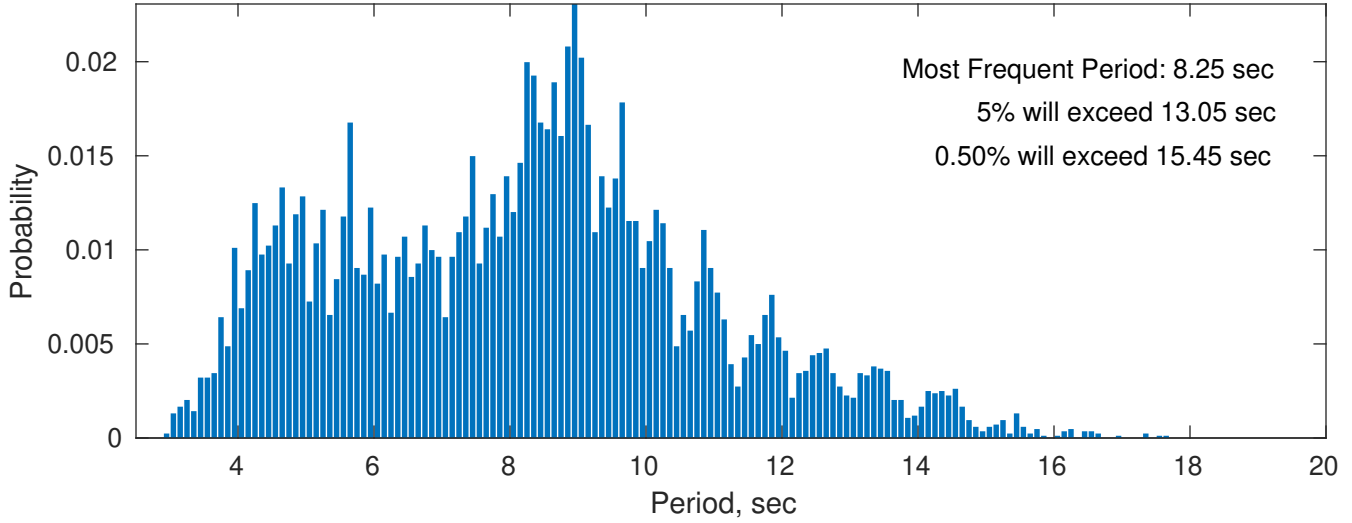
Wind-Sea: 22.34%



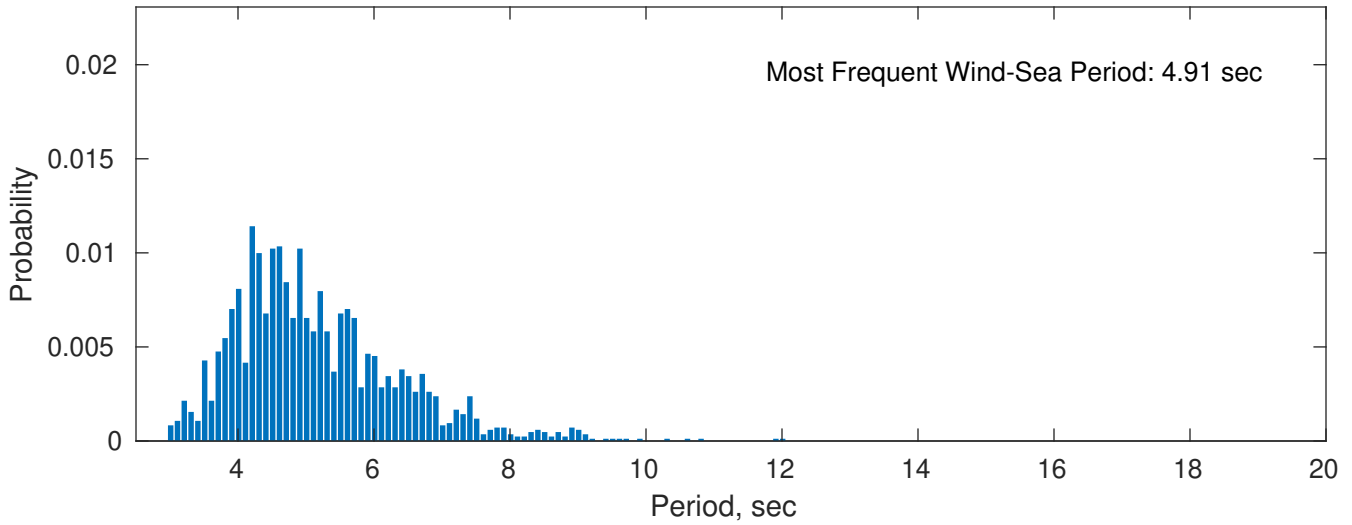
Swell: 77.66%



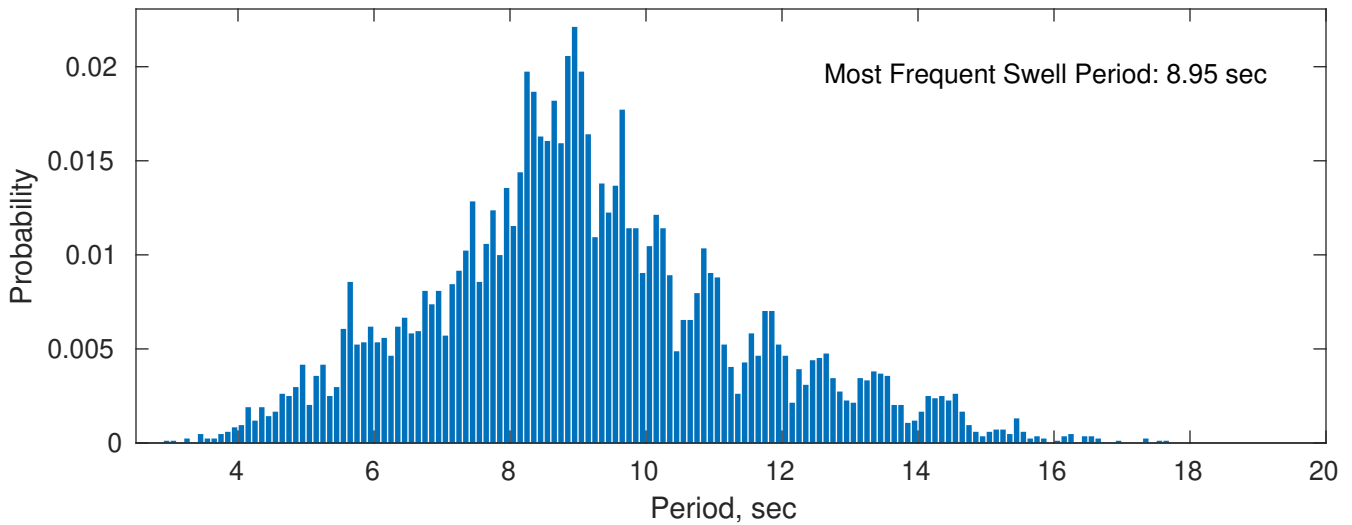
September Peak Wave Period PDF: 1979 - 2015



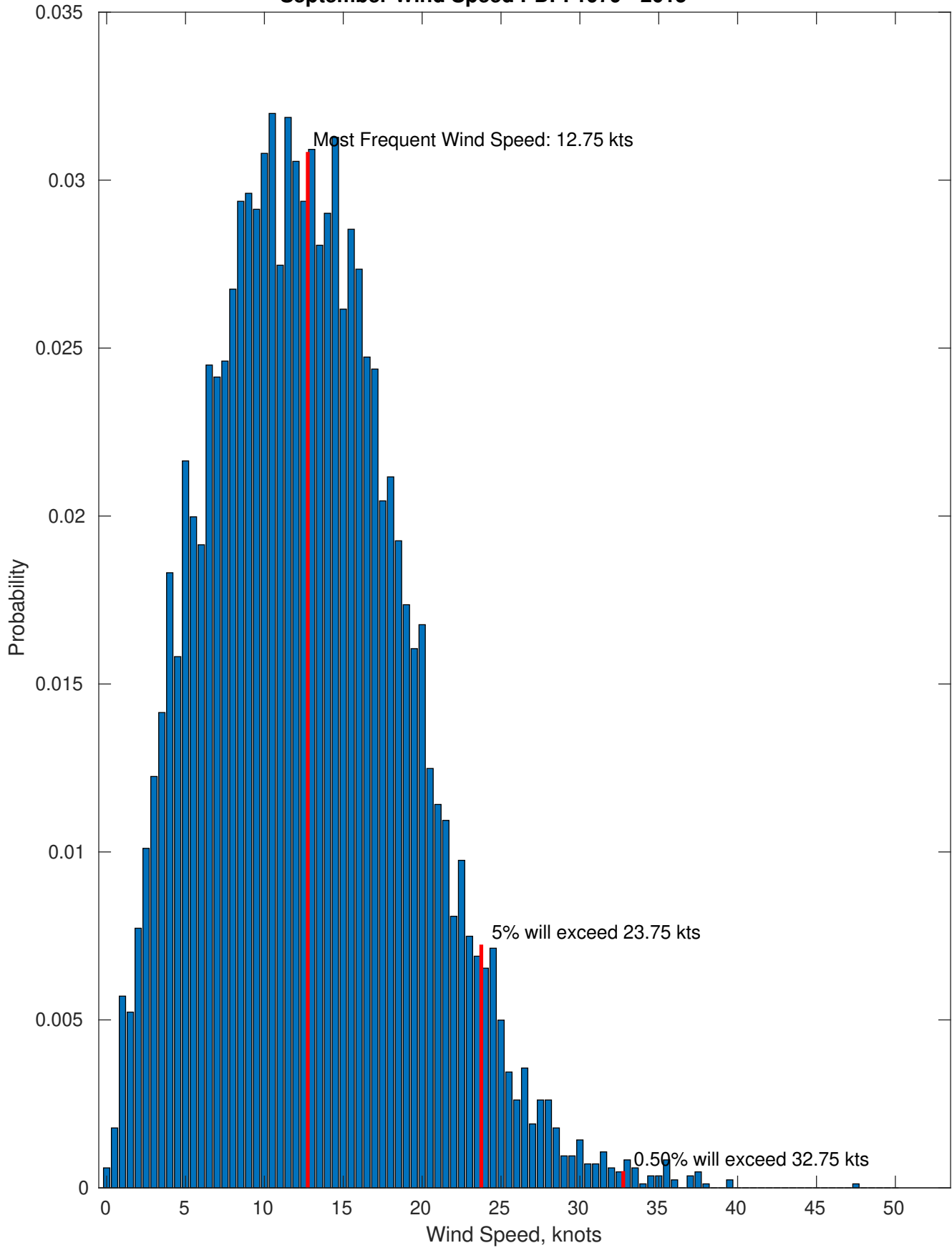
Wind-Sea: 22.34%



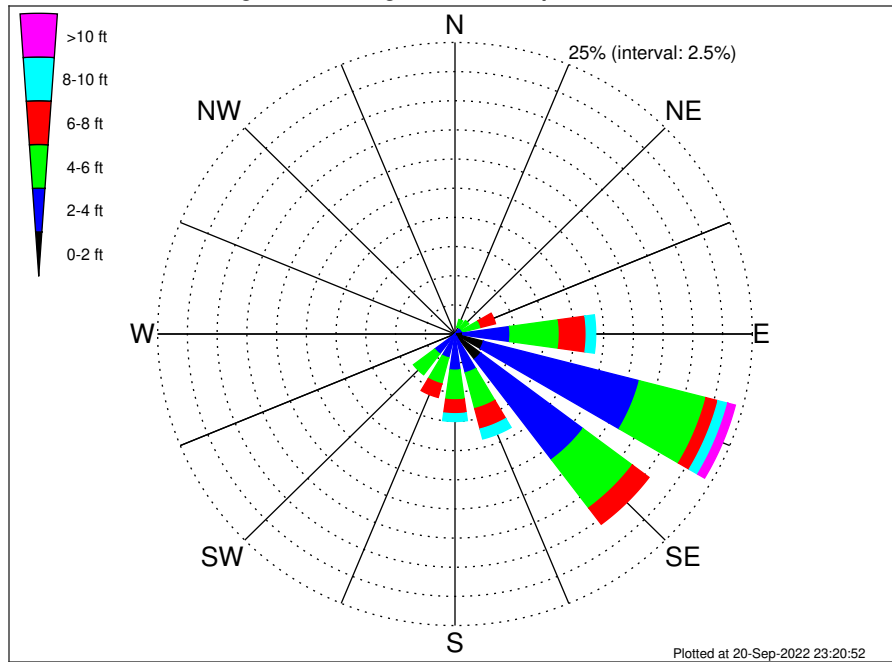
Swell: 77.66%



September Wind Speed PDF: 1979 - 2015



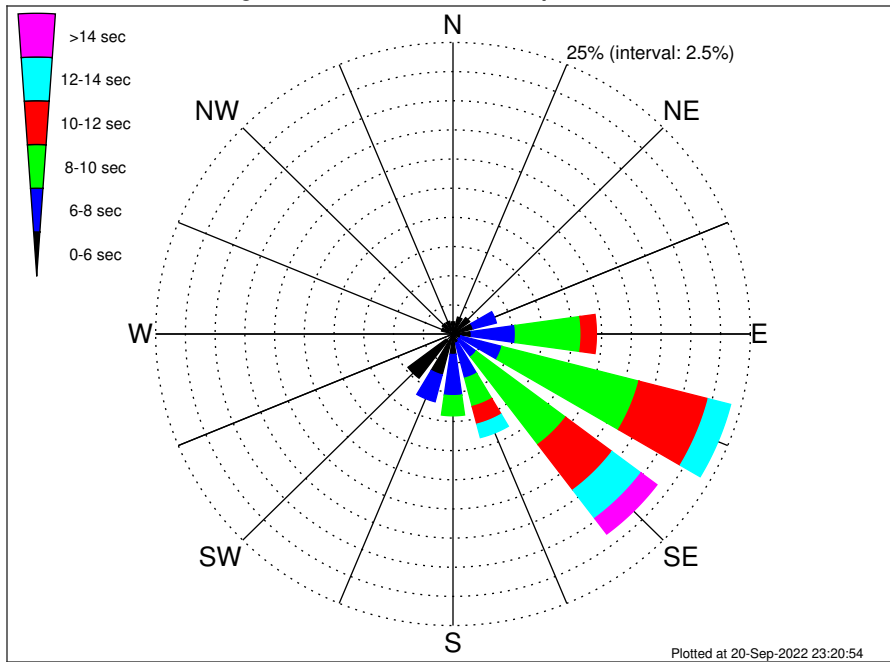
OCS-A 0537 Climatological WaveHeight Rose for September: 1979 - 2015



Joint Frequency Distribution Table

	N	NNE	NE	ENE	E	ENE	SE	SSE	S	SSW	SW	WSW	W	WNW	NW	NNW	Total
calm	•	•	•	•	0.02	•	•	•	•	•	•	•	•	•	•	•	0.02
1 - 2 ft	0.01	0.01	0.01	0.01	0.63	2.47	2.71	0.24	0.20	0.04	•	•	0.01	•	0.02	0.01	6.39
2 - 4 ft	0.36	0.61	0.63	0.67	3.97	13.54	10.78	3.20	2.90	2.08	2.14	0.34	0.24	0.32	0.56	0.46	42.81
4 - 6 ft	0.54	0.67	0.81	1.58	4.15	5.79	5.18	3.17	2.54	2.31	2.24	0.15	0.36	0.56	0.43	0.52	31.00
6 - 8 ft	0.13	0.20	0.38	1.26	2.26	1.05	1.75	1.81	1.19	1.20	0.61	0.01	0.05	0.10	0.12	0.13	12.24
8 - 10 ft	0.01	0.01	0.10	0.45	0.80	0.83	0.59	0.88	0.67	0.43	0.02	•	•	0.02	0.01	•	4.83
10 - 12 ft	•	•	0.05	0.14	0.08	0.37	0.26	0.27	0.17	0.10	•	•	•	•	•	•	1.44
12 - 14 ft	•	•	•	0.06	0.13	0.17	0.07	0.07	0.10	0.02	•	•	•	•	•	•	0.62
14 - 16 ft	•	•	•	0.04	0.01	0.12	0.07	0.02	0.06	0.02	•	•	•	•	•	•	0.34
16 - 18 ft	•	•	•	•	0.02	0.01	0.05	0.04	0.06	•	•	•	•	•	•	•	0.18
> 18 ft	•	•	•	•	•	•	•	0.06	0.08	•	•	•	•	•	•	•	0.14
Total	1.05	1.50	1.97	4.21	12.08	24.35	21.47	9.76	7.97	6.20	5.01	0.51	0.65	1.00	1.14	1.13	100.00

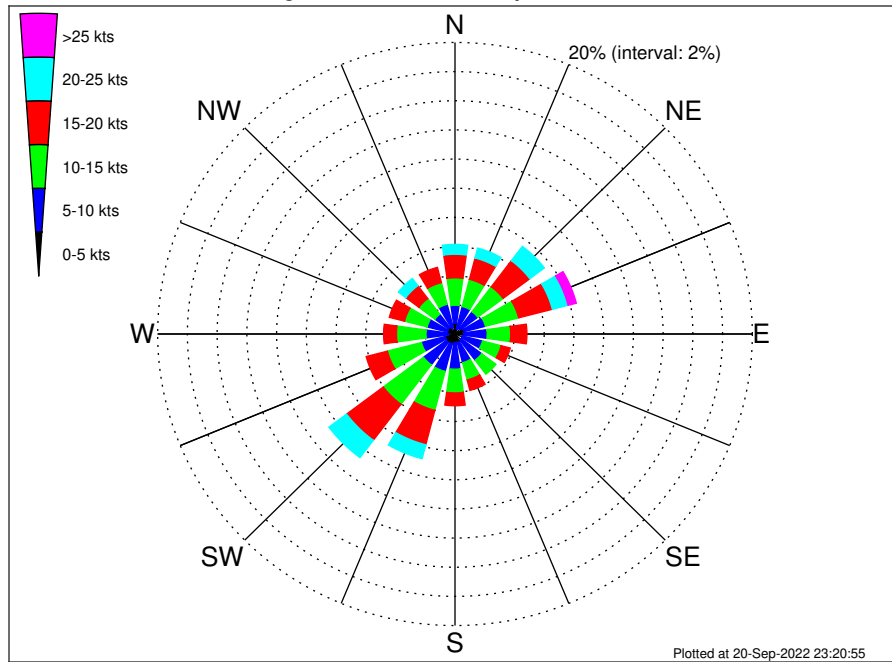
OCS-A 0537 Climatological WavePeriod Rose for September: 1979 - 2015



Joint Frequency Distribution Table

	N	NNE	NE	ENE	E	ENE	SE	SSE	S	SSW	SW	WSW	W	WNW	NW	NNW	Total
calm	•	•	•	•	•	•	•	•	•	•	•	•	•	•	•	•	•
1 - 2 sec	•	•	•	•	•	•	•	•	•	•	•	•	•	•	•	•	•
2 - 4 sec	0.23	0.21	0.13	0.11	0.11	0.04	0.02	•	0.12	0.17	0.74	0.24	0.19	0.19	0.50	0.34	3.33
4 - 6 sec	0.82	1.28	1.63	1.65	1.44	0.64	0.59	0.81	1.64	3.46	4.01	0.27	0.46	0.81	0.63	0.78	20.94
6 - 8 sec	•	•	0.21	2.01	3.71	3.58	1.84	3.10	3.53	2.38	0.26	•	•	•	0.01	•	20.64
8 - 10 sec	•	•	•	0.40	5.52	11.89	9.41	2.51	1.72	0.18	•	•	•	•	•	•	31.63
10 - 12 sec	•	•	•	0.04	1.28	6.03	4.89	1.57	0.61	0.01	•	•	•	•	•	•	14.42
12 - 14 sec	•	•	•	•	0.02	1.94	3.04	1.19	0.25	•	•	•	•	•	•	•	6.44
14 - 16 sec	•	•	•	•	•	0.19	1.52	0.54	0.10	•	•	•	•	•	•	•	2.34
18 - 20 sec	•	•	•	•	•	0.05	0.15	0.05	•	•	•	•	•	•	•	•	0.25
22 - 24 sec	•	•	•	•	•	•	•	•	•	•	•	•	•	•	•	•	•
Total	1.05	1.50	1.97	4.21	12.08	24.35	21.47	9.76	7.97	6.20	5.01	0.51	0.65	1.00	1.14	1.13	100.00

OCS-A 0537 Climatological Wind Rose for September: 1979 - 2015



Joint Frequency Distribution Table

	N	NNE	NE	ENE	E	ESE	SE	SSE	S	SSW	SW	WSW	W	WNW	NW	NNW	Total
calm	0.02	•	0.01	0.01	•	0.01	0.04	0.04	0.02	•	0.02	0.01	0.01	0.01	0.01	0.01	0.24
0 - 5 kts	0.73	0.37	0.46	0.62	0.61	0.50	0.49	0.57	0.57	0.69	0.70	0.67	0.45	0.51	0.56	0.44	8.93
5 - 10 kts	1.22	1.58	1.44	1.49	1.56	1.40	1.72	1.43	1.82	1.96	1.93	1.65	1.49	1.41	1.13	1.65	24.89
10 - 15 kts	1.88	1.93	2.14	2.31	1.58	1.30	1.20	1.22	1.63	2.76	3.39	2.37	1.99	1.57	1.34	1.53	30.13
15 - 20 kts	1.62	1.51	2.25	2.34	1.09	0.63	0.37	0.74	0.88	2.44	3.09	1.47	0.87	1.06	1.11	1.08	22.54
20 - 25 kts	0.68	0.70	1.22	1.09	0.50	0.08	0.10	0.24	0.38	0.99	1.49	0.40	0.40	0.40	0.62	0.45	9.75
25 - 30 kts	0.13	0.24	0.34	0.44	0.11	0.05	0.04	0.04	0.15	0.17	0.23	0.11	0.06	0.14	0.10	0.21	2.54
30 - 35 kts	0.04	0.10	0.04	0.12	0.08	0.08	0.02	0.05	0.05	0.02	0.02	0.01	•	0.02	0.04	•	0.69
35 - 40 kts	•	0.02	0.07	0.01	0.02	0.01	0.01	•	0.02	0.02	0.01	0.01	0.01	0.01	0.01	•	0.26
40 - 45 kts	•	•	•	•	•	•	•	•	•	•	•	•	•	•	•	•	•
45 - 50 kts	•	•	•	•	•	•	•	0.01	•	•	0.01	•	•	•	•	•	0.02
Total	6.31	6.44	7.98	8.43	5.55	4.07	3.98	4.33	5.53	9.05	10.89	6.71	5.28	5.15	4.91	5.39	100.00