

OCS-A 0538 - August

Latitude: 39.71 N Longitude: 73.16 W

Weather Days

Wave Height > 3.0 ft Mean: 17.5 days Range: 13.7 - 21.4 days p10:23 days p50:18 days p90:13.5 days

Wave Height > 4.0 ft Mean: 9.3 days Range: 6.1 - 12.4 days p10:13.5 days p50:9.5 days p90:6.5 days

Wave Height > 5.0 ft Mean: 4.9 days Range: 2.3 - 7.4 days p10:7.5 days p50:5.5 days p90:1.5 days

Wind Speed > 20.0 knots Mean: 2.0 days Range: 0.7 - 3.3 days p10:4 days p50:2 days p90:0.5 days

Wind Speed > 25.0 knots Mean: 0.4 days Range: 0.0 - 1.0 days p10:1.5 days p50:0.5 days p90:0.5 days

Wind Speed > 30.0 knots Mean: 0.1 days Range: 0.0 - 0.3 days p10:0.5 days p50:0.5 days p90:0.5 days

Working Window Probability

Wave Height < 3.0 ft 3 days or longer: 23%
 5 days or longer: 2%
 7 days or longer: 1%

Wave Height < 4.0 ft 3 days or longer: 46%
 5 days or longer: 16%
 7 days or longer: 7%

Wave Height < 5.0 ft 3 days or longer: 62%
 5 days or longer: 33%
 7 days or longer: 22%

Waves

Mean Height: 2 - 4 ft

The wave heights will occasionally reach 10 - 12 ft, but rarely higher.

Mean Period: 6 - 8 sec

The wave periods will occasionally reach 14 - 16 sec, but rarely longer.

Principle Direction, from: ESE

WindSea/Swell: 18% / 82%

Winds

Mean Speed: 10 - 15 kts

The winds will occasionally reach 25 - 30 kts, but rarely greater.

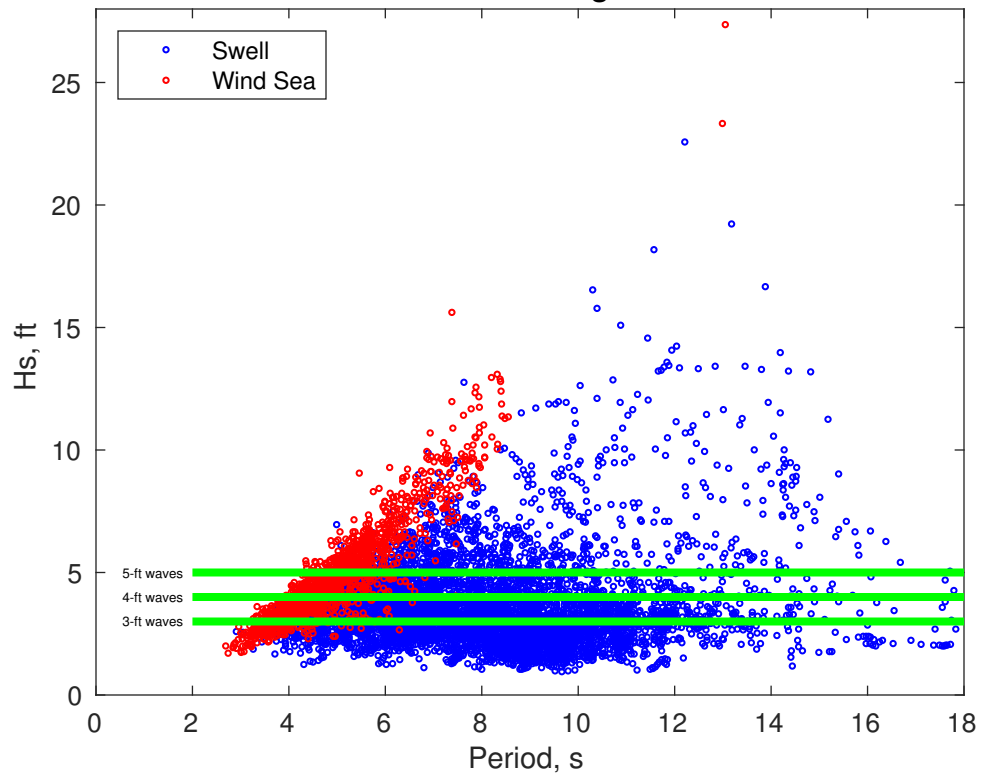
Principle Direction, from: SW

Severe Storms

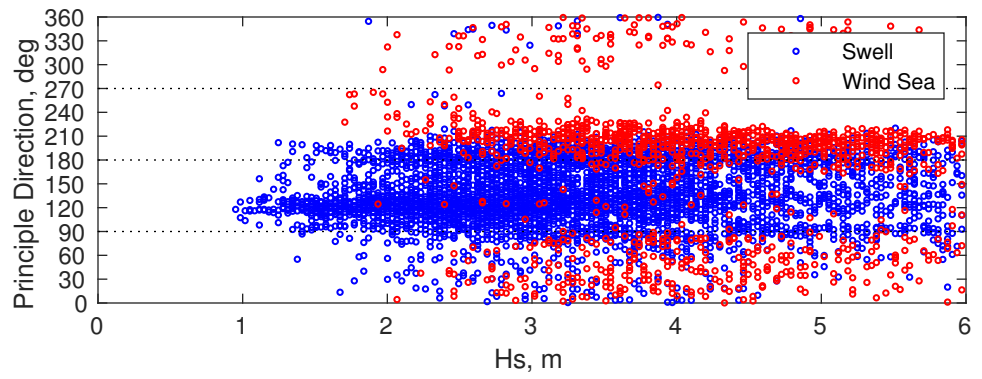
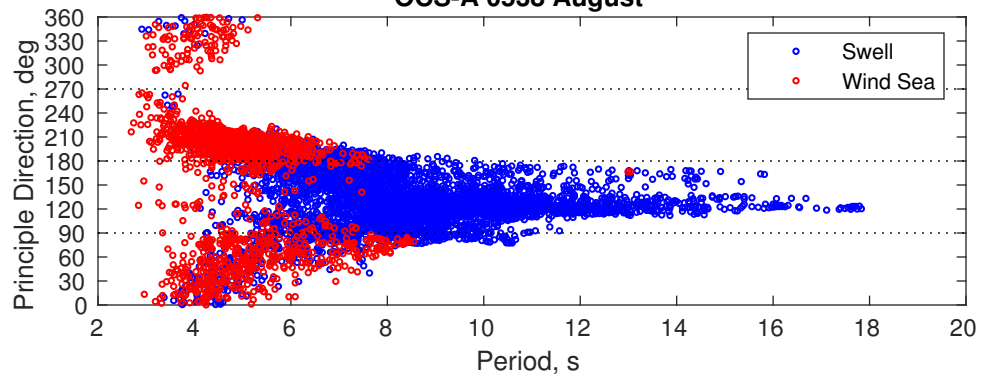
There is a 3 % chance of a storm occurring in the month with winds peaking above 34 kts.

There is a 9 % chance of a storm occurring in the month with waves peaking at 4m (13 ft) or greater.

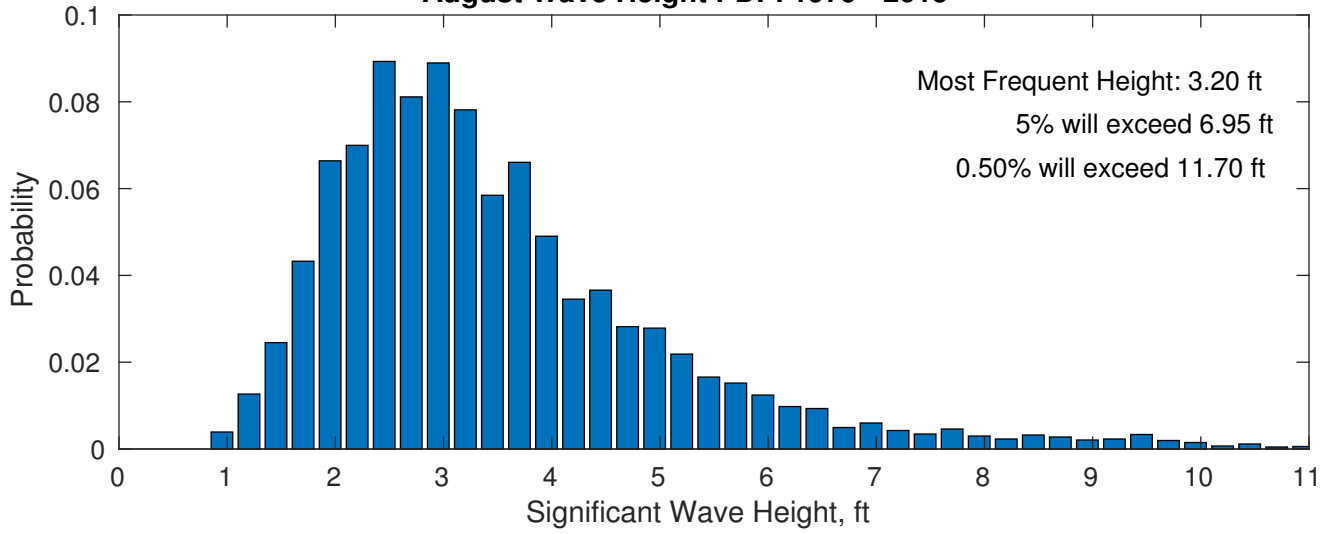
OCS-A 0538 August



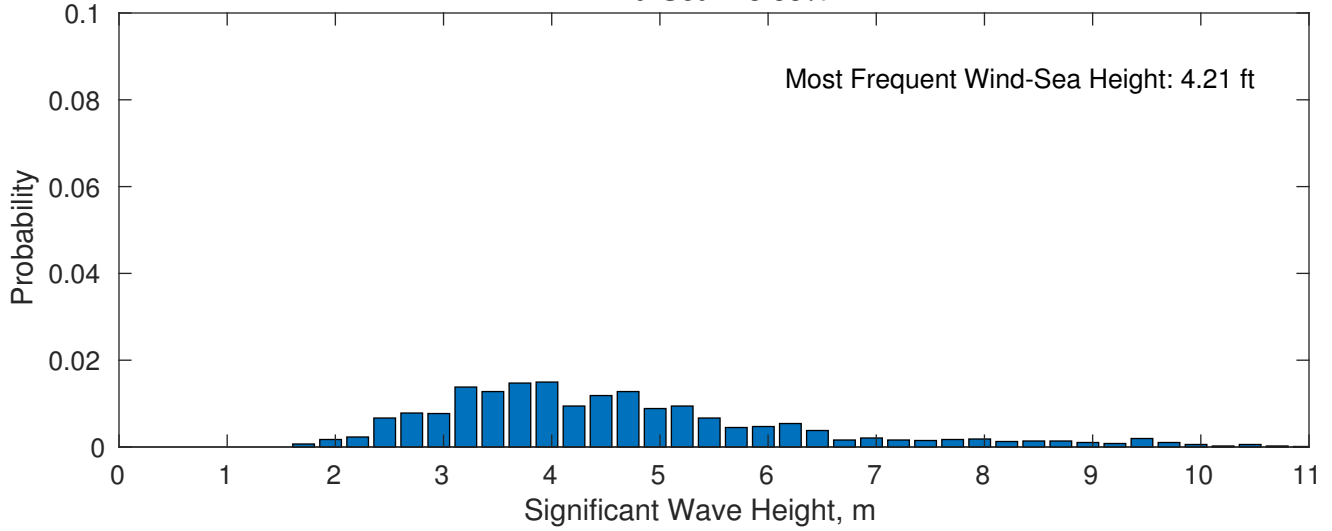
OCS-A 0538 August



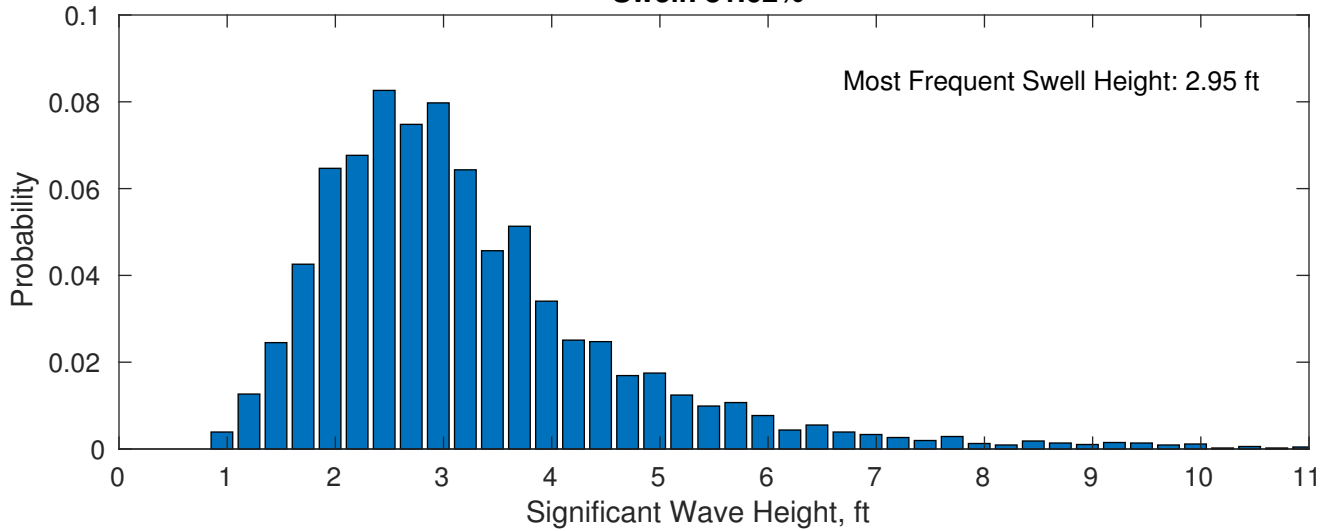
August Wave Height PDF: 1979 - 2015



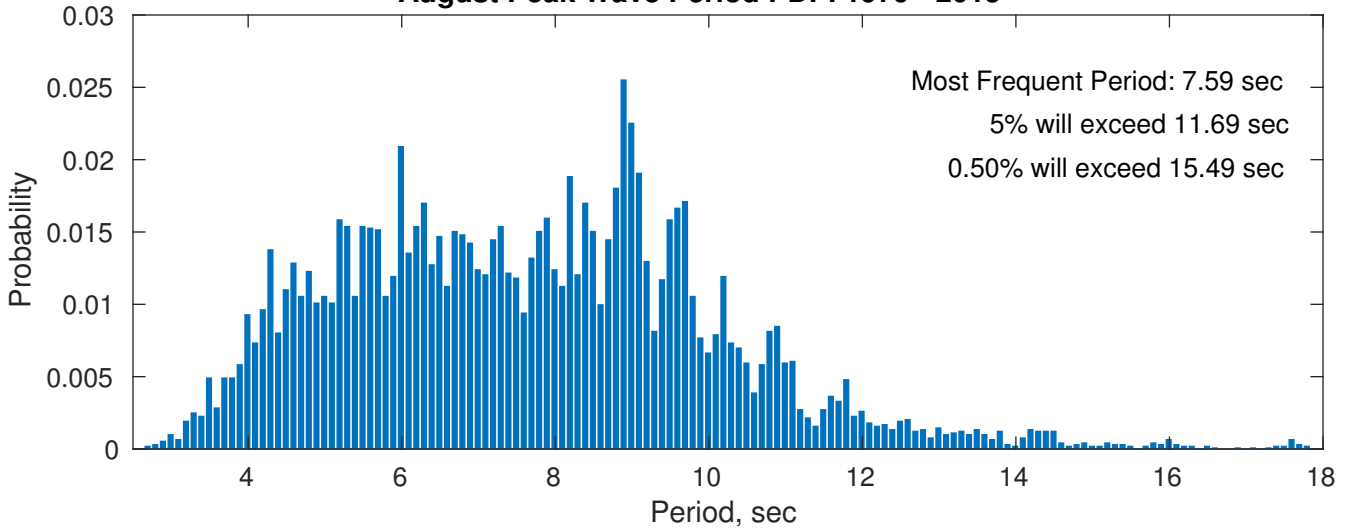
Wind-Sea: 18.38%



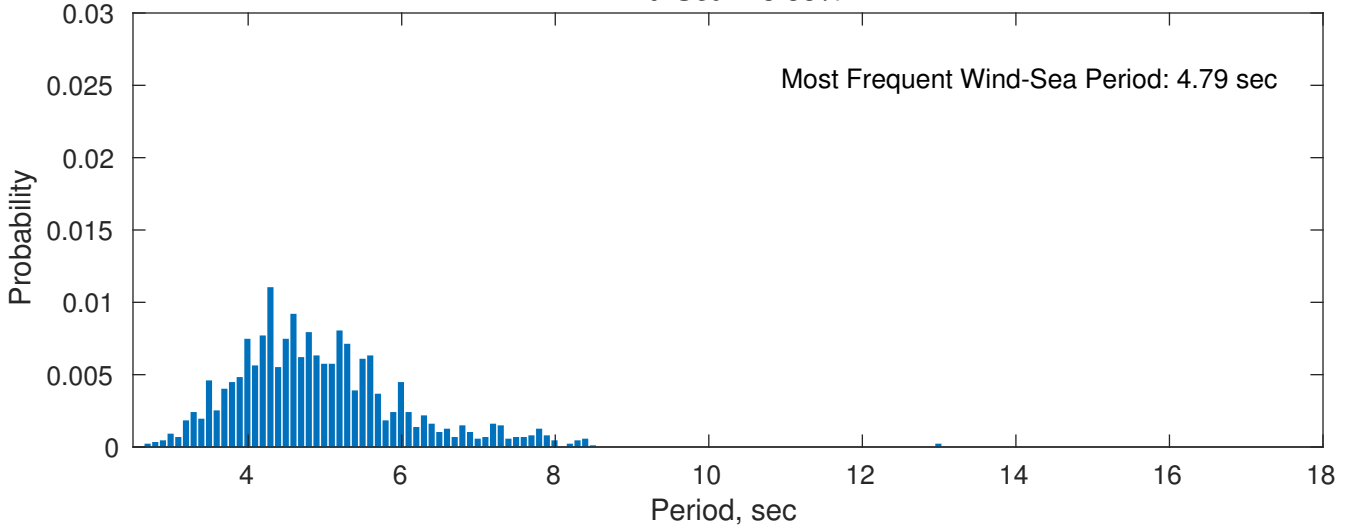
Swell: 81.62%



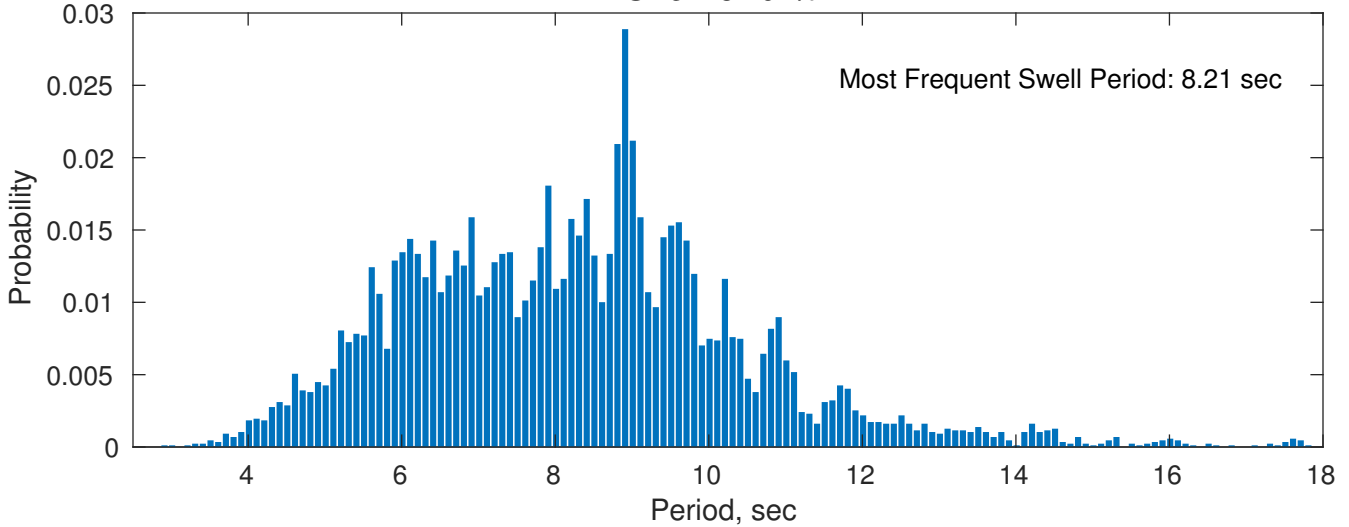
August Peak Wave Period PDF: 1979 - 2015



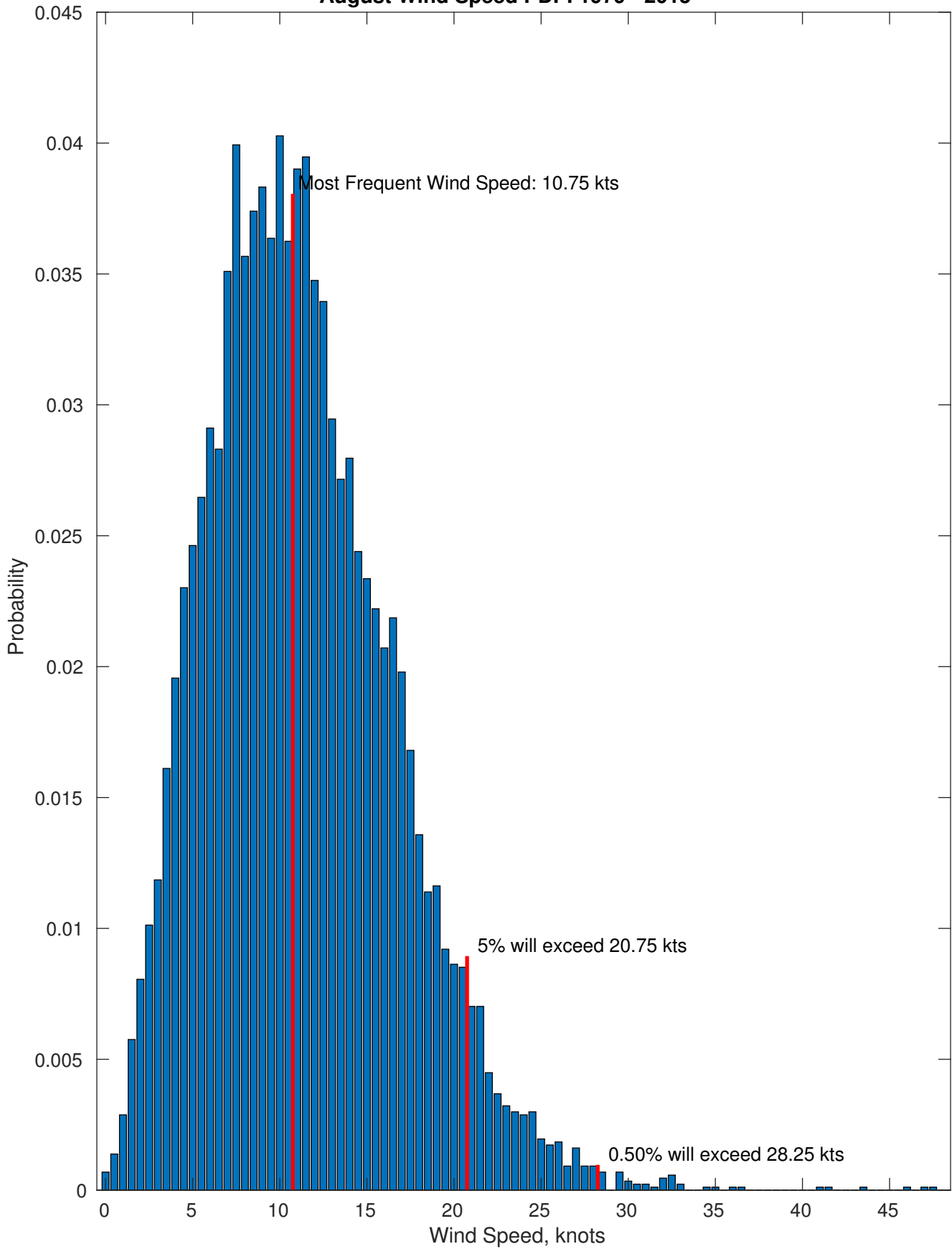
Wind-Sea: 18.38%



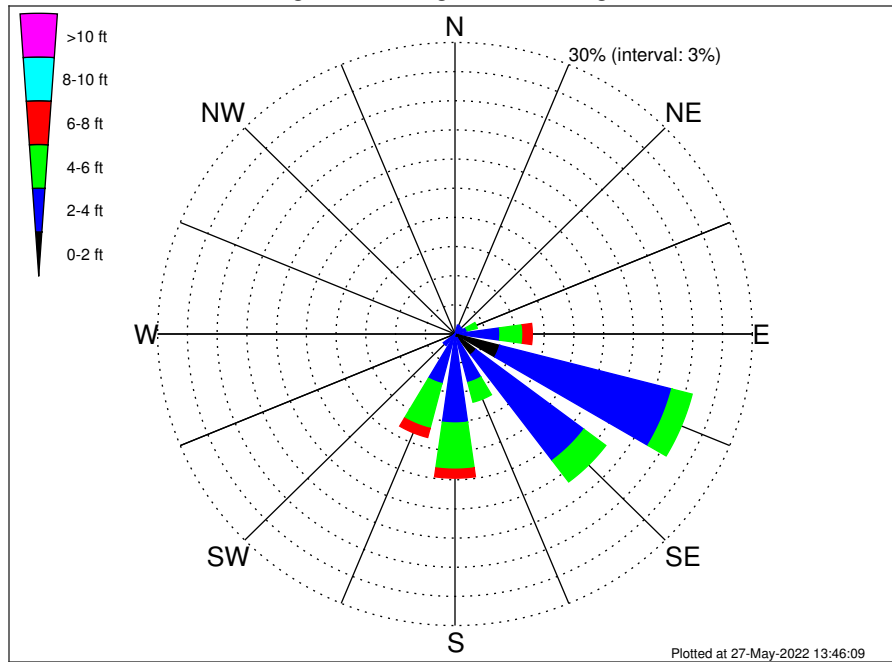
Swell: 81.62%



August Wind Speed PDF: 1979 - 2015



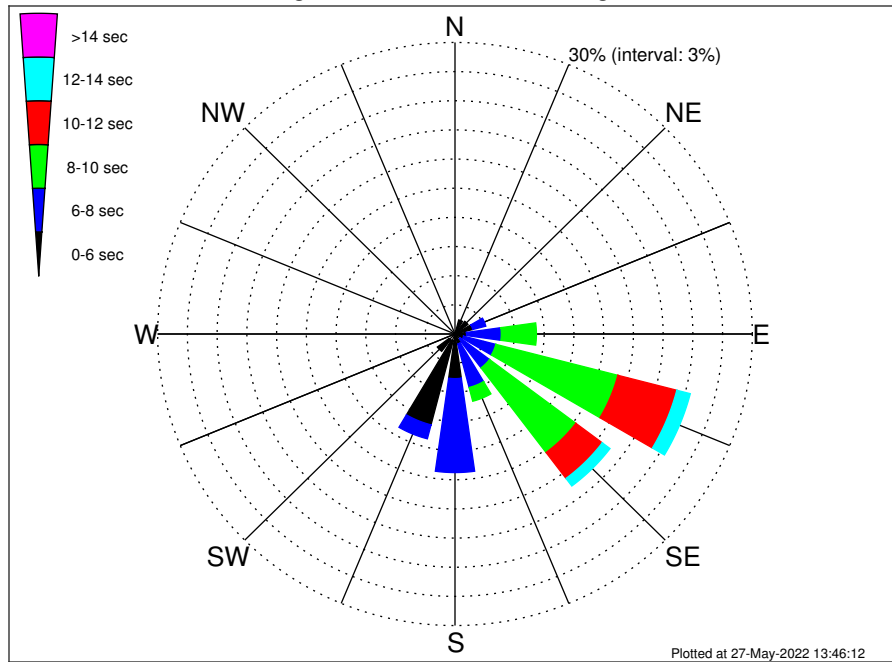
OCS-A 0538 Climatological WaveHeight Rose for August: 1979 - 2015



Joint Frequency Distribution Table

	N	NNE	NE	ENE	E	ESE	SE	SSE	S	SSW	SW	WSW	W	WNW	NW	NNW	Total
calm	•	•	•	•	•	0.02	0.01	•	•	•	•	•	•	•	•	•	0.03
1 - 2 ft	0.01	0.02	0.02	0.05	0.47	4.64	2.65	0.45	0.43	0.18	0.01	0.01	0.05	0.01	•	•	9.00
2 - 4 ft	0.47	0.93	0.86	1.23	4.06	17.93	13.65	4.71	8.73	5.09	1.47	0.18	0.06	0.07	0.24	0.38	60.07
4 - 6 ft	0.24	0.47	0.71	1.05	2.32	2.13	2.75	2.09	4.75	4.76	0.67	0.01	•	0.02	0.12	0.21	22.31
6 - 8 ft	0.07	0.09	0.24	0.51	0.94	0.38	0.59	0.55	0.92	0.97	0.09	•	•	•	•	0.01	5.36
8 - 10 ft	0.01	•	0.10	0.45	0.51	0.14	0.15	0.32	0.23	0.14	•	•	•	•	•	•	2.05
10 - 12 ft	•	0.01	•	0.13	0.24	0.01	0.13	0.12	0.08	•	•	•	•	•	•	•	0.71
12 - 14 ft	•	•	0.01	0.07	0.02	•	0.13	0.07	0.01	•	•	•	•	•	•	•	0.31
14 - 16 ft	•	•	0.01	•	•	•	•	0.03	0.02	•	•	•	•	•	•	•	0.07
16 - 18 ft	•	•	•	•	•	•	•	•	0.02	•	•	•	•	•	•	•	0.02
> 18 ft	•	•	•	•	•	•	•	0.06	•	•	•	•	•	•	•	•	0.06
Total	0.81	1.53	1.97	3.48	8.57	25.25	20.05	8.40	15.20	11.14	2.24	0.21	0.10	0.10	0.36	0.60	100.00

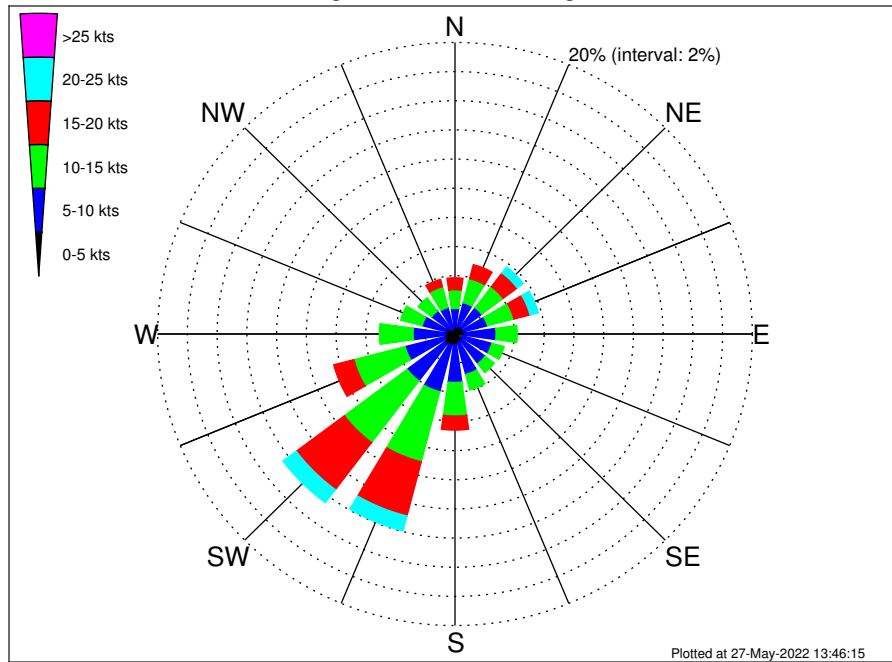
OCS-A 0538 Climatological WavePeriod Rose for August: 1979 - 2015



Joint Frequency Distribution Table

	N	NNE	NE	ENE	E	ESE	SE	SSE	S	SSW	SW	WSW	W	WNW	NW	NNW	Total
calm	•	•	•	•	•	•	•	•	•	•	•	•	•	•	•	•	•
1 - 2 sec	•	•	•	•	•	•	•	•	•	•	•	•	•	•	•	•	•
2 - 4 sec	0.23	0.33	0.22	0.06	0.02	0.02	0.08	0.02	0.12	0.72	0.75	0.18	0.10	0.08	0.21	0.29	3.44
4 - 6 sec	0.56	1.16	1.42	1.80	1.14	0.87	0.59	1.04	4.48	8.93	1.48	0.02	•	0.02	0.15	0.31	23.97
6 - 8 sec	0.01	0.03	0.33	1.36	3.51	3.36	3.69	4.63	9.67	1.48	0.01	•	•	•	•	•	28.09
8 - 10 sec	•	•	•	0.21	3.54	12.72	10.91	1.46	0.68	•	•	•	•	•	•	•	29.52
10 - 12 sec	•	•	•	0.06	0.36	6.14	3.34	0.72	0.24	•	•	•	•	•	•	•	10.86
12 - 14 sec	•	•	•	•	•	1.40	0.98	0.28	0.02	•	•	•	•	•	•	•	2.68
14 - 16 sec	•	•	•	•	•	0.44	0.37	0.25	•	•	•	•	•	•	•	•	1.06
18 - 20 sec	•	•	•	•	•	0.29	0.09	•	•	•	•	•	•	•	•	•	0.38
22 - 24 sec	•	•	•	•	•	•	•	•	•	•	•	•	•	•	•	•	•
Total	0.81	1.53	1.97	3.48	8.57	25.25	20.05	8.40	15.20	11.14	2.24	0.21	0.10	0.10	0.36	0.60	100.00

OCS-A 0538 Climatological Wind Rose for August: 1979 - 2015



Joint Frequency Distribution Table

	N	NNE	NE	ENE	E	ESE	SE	SSE	S	SSW	SW	WSW	W	WNW	NW	NNW	Total
calm	0.02	0.01	•	0.02	•	0.01	0.03	•	0.02	•	•	•	0.03	0.02	0.01	0.01	0.21
0 - 5 kts	0.54	0.53	0.60	0.56	0.70	0.47	0.58	0.62	0.72	0.82	0.90	0.71	0.61	0.63	0.41	0.32	9.74
5 - 10 kts	1.20	1.68	1.66	1.67	2.06	2.08	1.93	2.24	2.58	3.27	3.13	2.75	2.17	1.62	1.54	1.54	33.13
10 - 15 kts	1.28	1.70	1.81	1.84	1.43	0.85	0.77	1.09	2.30	4.97	5.29	3.56	2.27	1.50	1.14	1.47	33.27
15 - 20 kts	0.82	0.99	1.19	1.12	0.49	0.10	0.25	0.21	0.97	3.84	4.05	1.40	0.38	0.33	0.39	0.52	17.05
20 - 25 kts	0.20	0.44	0.51	0.58	0.22	0.03	0.03	0.14	0.24	1.05	1.12	0.14	0.05	0.03	0.20	0.18	5.14
25 - 30 kts	0.06	0.18	0.35	0.20	0.02	0.01	0.05	•	0.05	0.03	0.12	•	0.01	0.01	0.01	0.03	1.13
30 - 35 kts	0.01	0.02	0.05	0.09	•	0.02	0.02	•	•	•	•	0.01	•	•	•	•	0.23
35 - 40 kts	•	•	•	0.01	0.01	•	•	•	•	•	•	•	•	0.01	•	•	0.03
40 - 45 kts	•	•	•	•	•	•	•	•	0.01	•	0.01	•	0.01	•	•	•	0.03
45 - 50 kts	0.01	0.01	•	•	•	•	0.01	•	•	•	•	•	•	•	•	•	0.03
Total	4.13	5.57	6.14	6.09	4.94	3.59	3.68	4.30	6.89	13.98	14.61	8.57	5.54	4.17	3.71	4.09	100.00