

## OCS-A 0538 - December

Latitude: 39.71 N Longitude: 73.16 W

### Weather Days

Wave Height > 3.0 ft Mean: 23.6 days Range: 22.1 - 25.2 days p10:25.5 days p50:24 days p90:21.5 days  
Wave Height > 4.0 ft Mean: 18.7 days Range: 16.5 - 20.8 days p10:21.5 days p50:19.5 days p90:16 days  
Wave Height > 5.0 ft Mean: 13.8 days Range: 11.2 - 16.4 days p10:17.5 days p50:14.5 days p90:10.5 days  
  
Wind Speed > 20.0 knots Mean: 11.6 days Range: 9.1 - 14.1 days p10:15 days p50:12 days p90:7.5 days  
Wind Speed > 25.0 knots Mean: 5.6 days Range: 3.6 - 7.6 days p10:8 days p50:6 days p90:3 days  
Wind Speed > 30.0 knots Mean: 2.0 days Range: 0.9 - 3.2 days p10:4 days p50:2 days p90:1 days

### Working Window Probability

Wave Height < 3.0 ft	3 days or longer: 4%
	5 days or longer: 0%
	7 days or longer: 0%
Wave Height < 4.0 ft	3 days or longer: 13%
	5 days or longer: 1%
	7 days or longer: 0%
Wave Height < 5.0 ft	3 days or longer: 29%
	5 days or longer: 3%
	7 days or longer: 1%

### Waves

Mean Height: 4 - 6 ft  
The wave heights will occasionally reach 12 - 14 ft, but rarely higher.  
Mean Period: 4 - 6 sec  
The wave periods will occasionally reach 12 - 14 sec, but rarely longer.  
Principle Direction, from: E  
WindSea/Swell: 49% / 51%

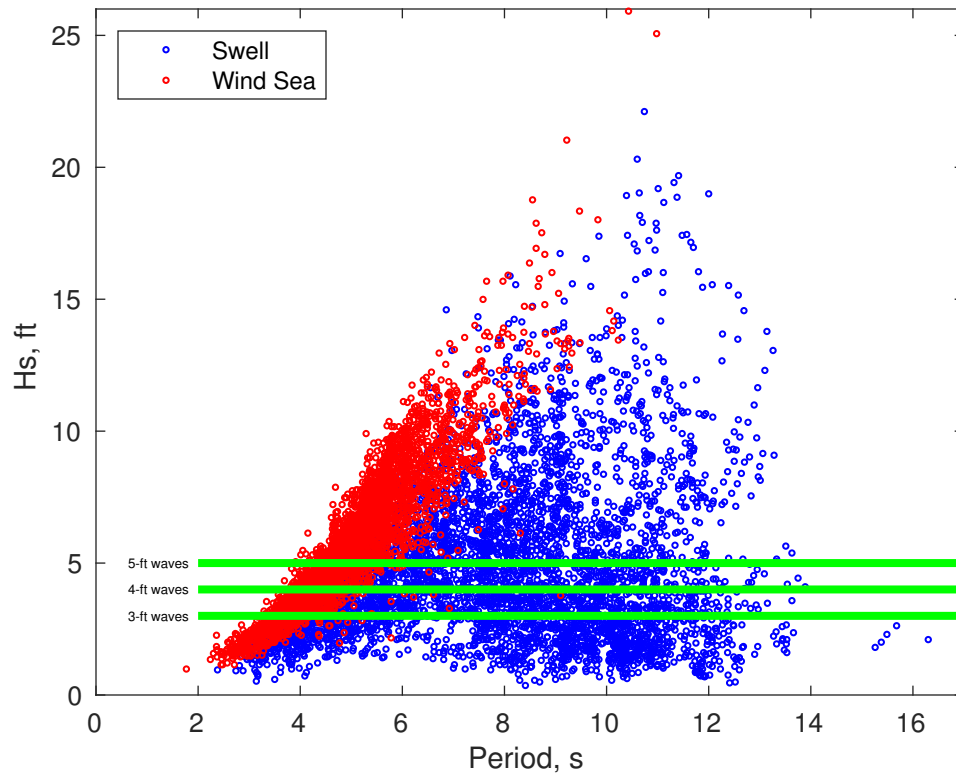
### Winds

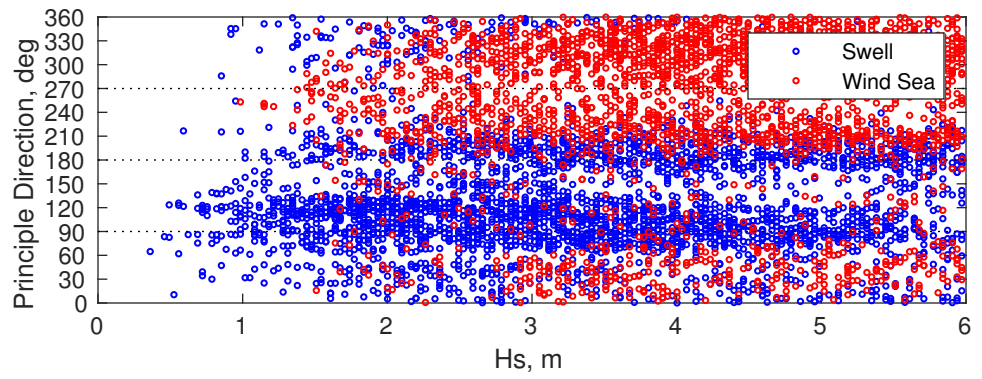
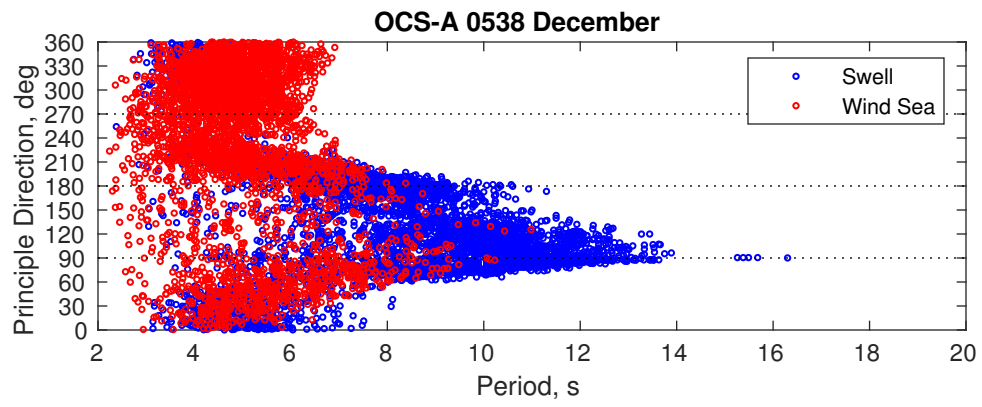
Mean Speed: 15 - 20 kts  
The winds will occasionally reach 35 - 40 kts, but rarely greater.  
Principle Direction, from: WNW

### Severe Storms

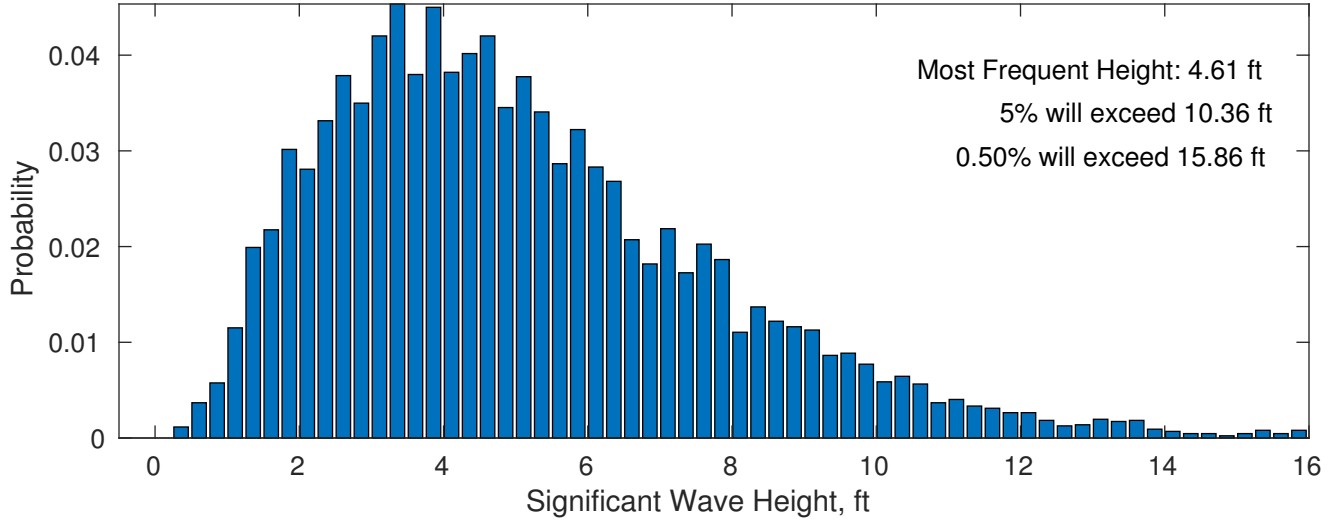
There is a 92 % chance of a storm occurring in the month with winds peaking above 34 kts.  
There is a 46 % chance of a storm occurring in the month with waves peaking at 4m (13 ft) or greater.

### OCS-A 0538 December

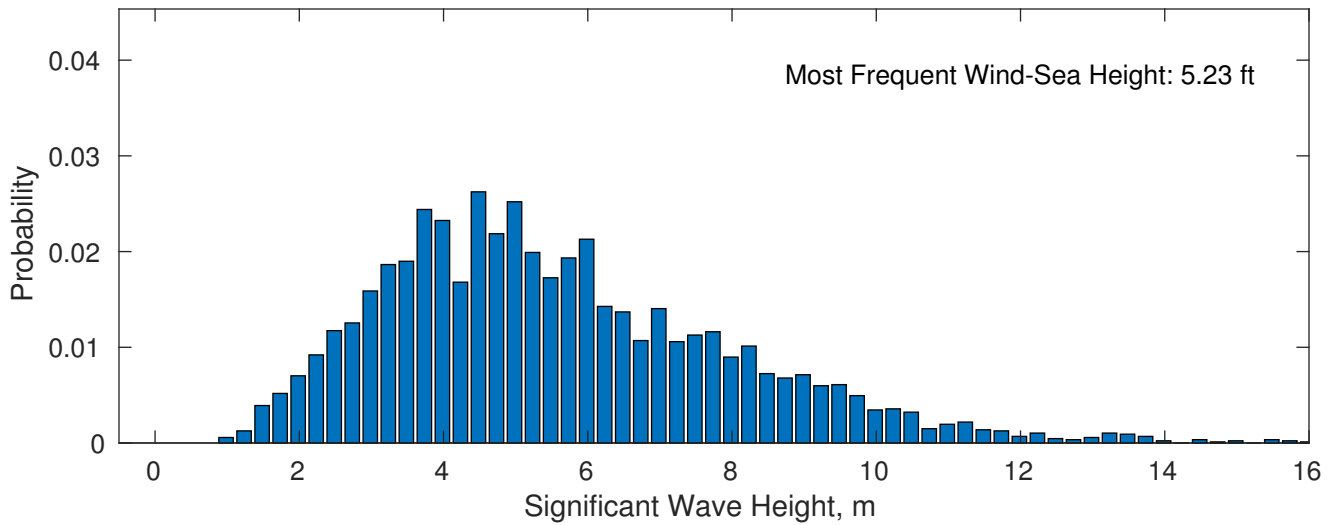




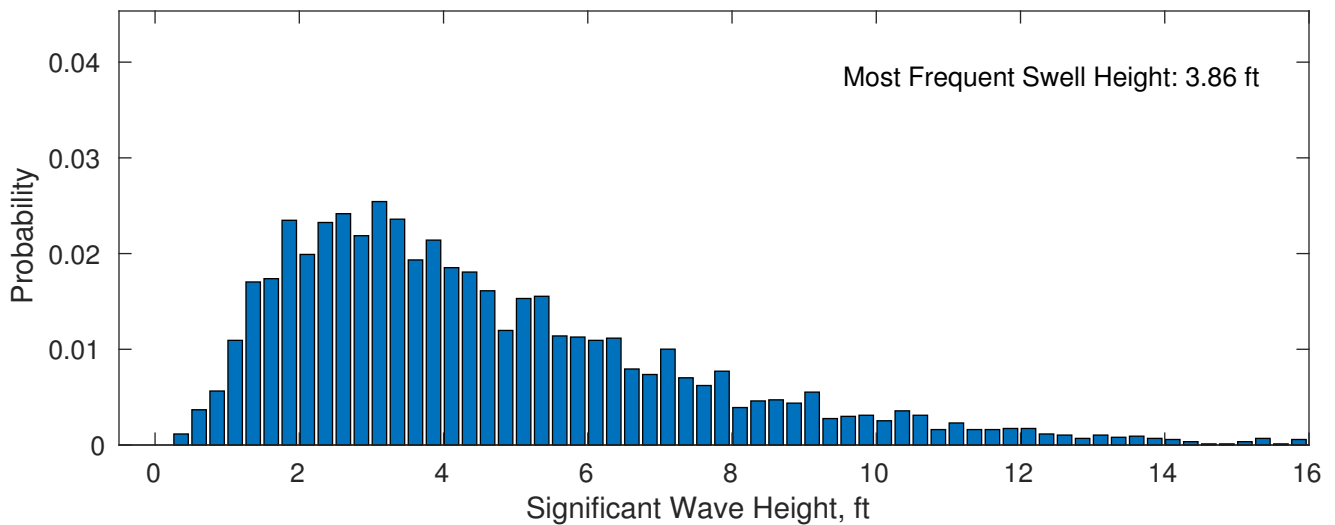
**December Wave Height PDF: 1979 - 2015**



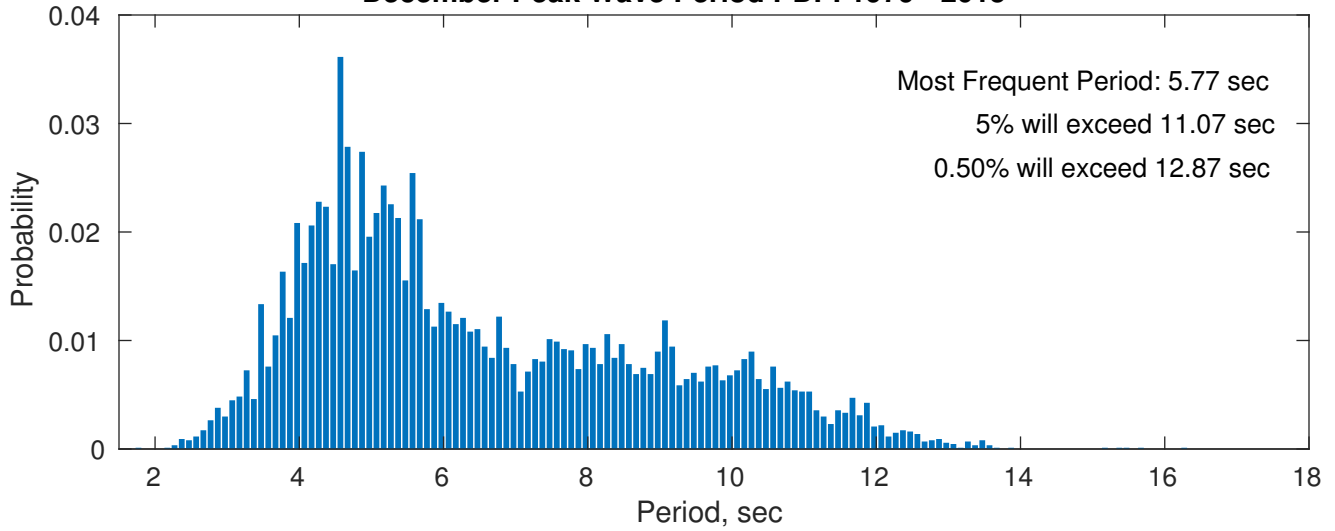
**Wind-Sea: 49.12%**



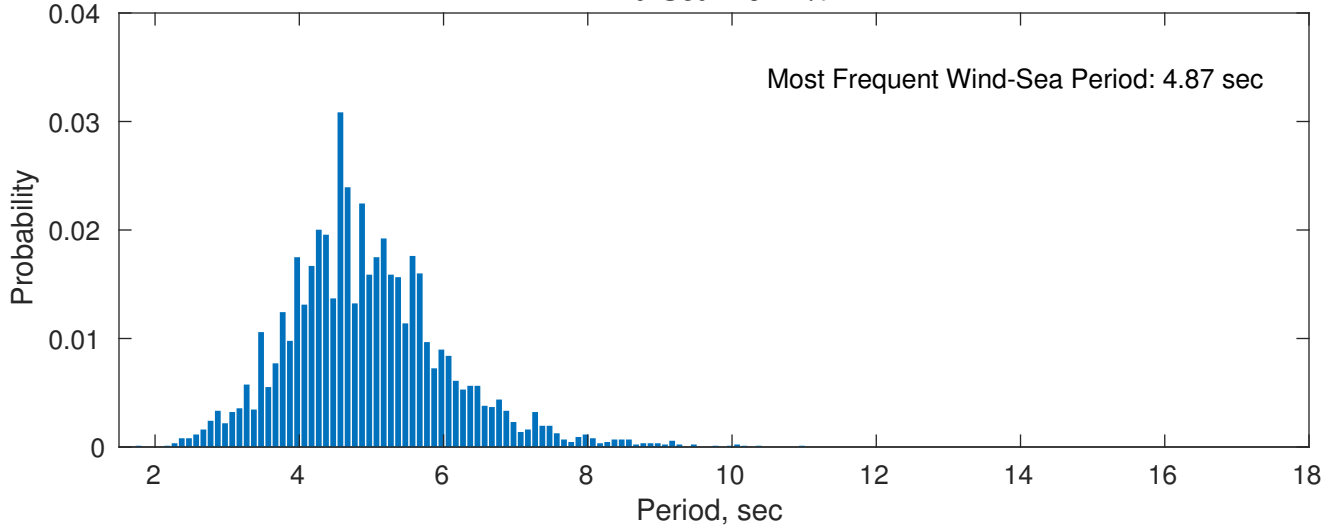
**Swell: 50.88%**



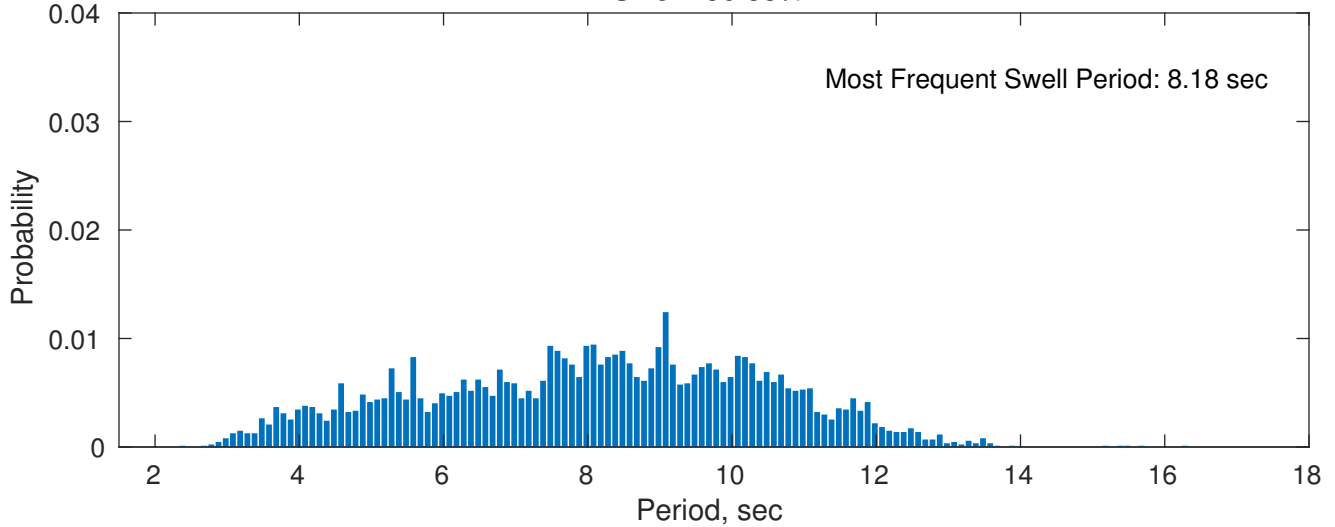
**December Peak Wave Period PDF: 1979 - 2015**



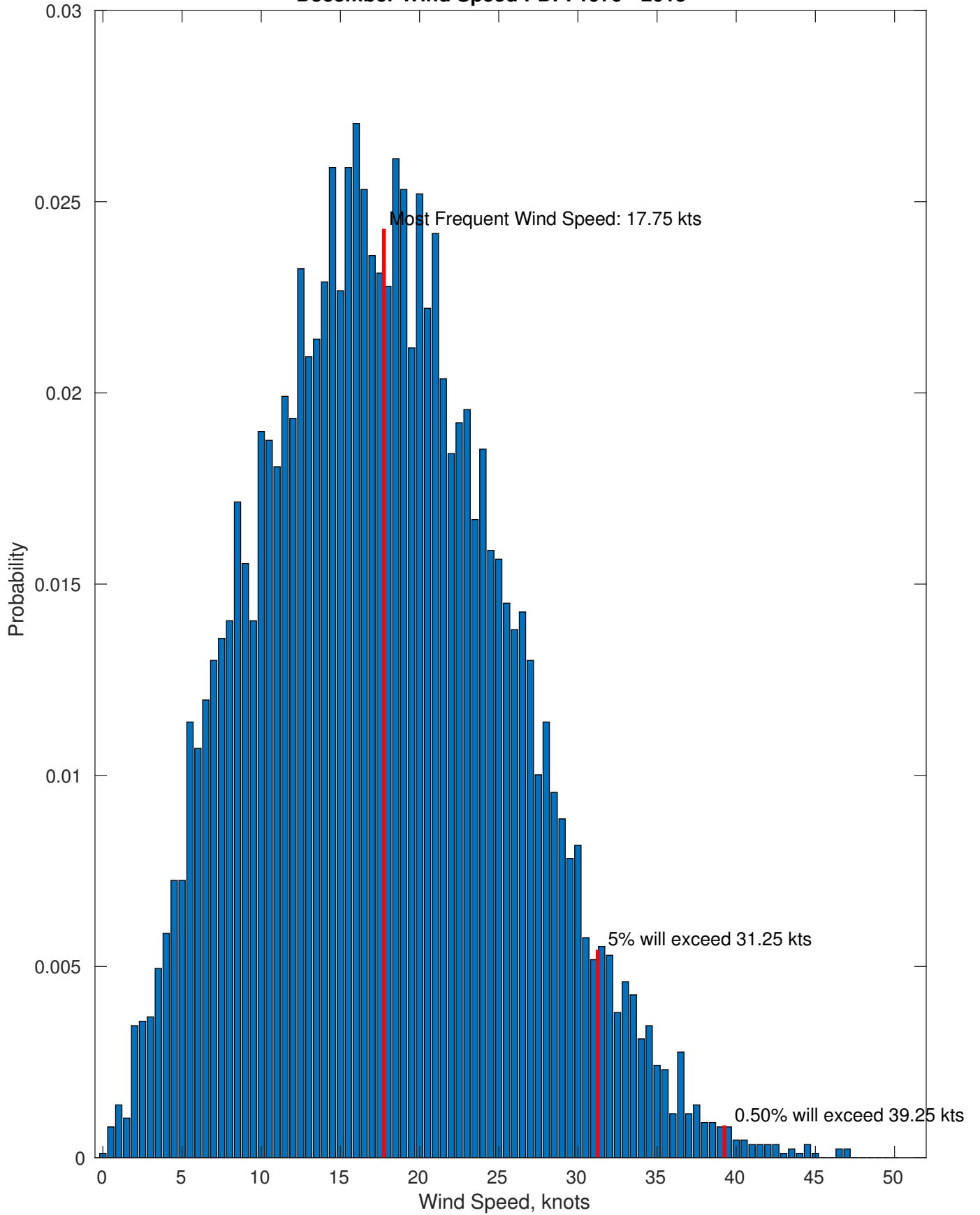
**Wind-Sea: 49.12%**



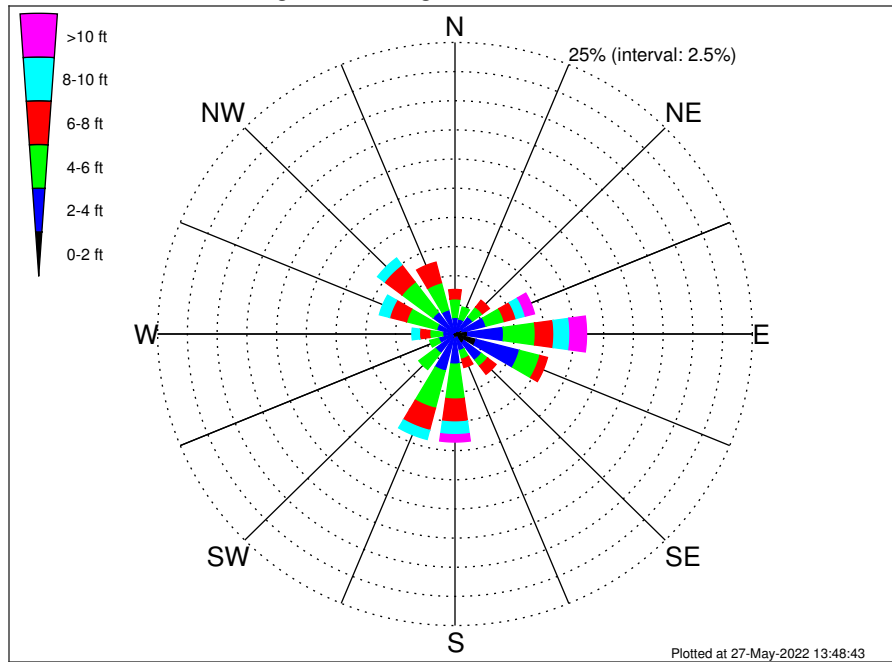
**Swell: 50.88%**



December Wind Speed PDF: 1979 - 2015



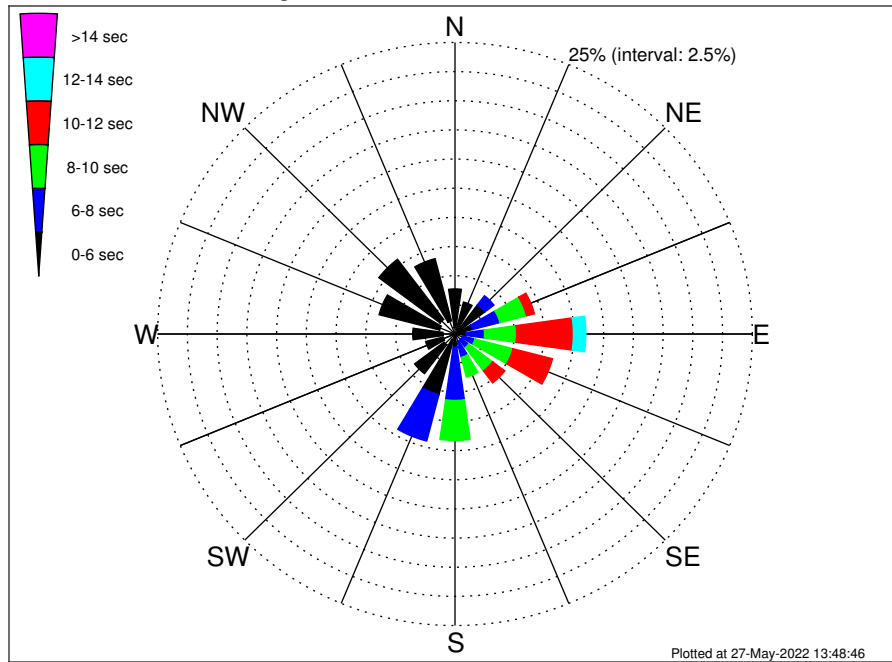
OCS-A 0538 Climatological WaveHeight Rose for December: 1979 - 2015



Joint Frequency Distribution Table

	N	NNE	NE	ENE	E	ESE	SE	SSE	S	SSW	SW	WSW	W	WNW	NW	NNW	Total
calm	0.01	0.01	0.03	0.08	0.14	0.28	0.12	0.01	•	•	0.03	0.02	•	0.01	•	0.03	0.78
1 - 2 ft	0.13	0.24	0.32	0.55	0.93	1.57	0.84	0.31	0.41	0.39	0.20	0.30	0.25	0.17	0.22	0.20	7.03
2 - 4 ft	1.29	1.09	1.50	2.06	3.02	3.76	1.83	1.15	2.18	2.89	1.82	1.10	0.79	1.42	2.12	1.91	29.92
4 - 6 ft	1.59	1.05	1.04	1.59	2.67	1.77	0.64	0.76	2.99	3.30	1.76	0.77	1.08	2.61	3.25	2.41	29.28
6 - 8 ft	0.81	0.51	0.74	1.02	1.57	0.66	0.90	0.74	1.97	1.96	0.56	0.31	0.86	1.47	1.85	1.82	17.74
8 - 10 ft	0.20	0.22	0.31	0.81	1.35	0.38	0.38	0.43	1.08	0.81	0.21	0.20	0.63	0.89	0.73	0.59	9.18
10 - 12 ft	0.07	0.05	0.15	0.49	0.74	0.23	0.30	0.36	0.40	0.16	0.06	0.07	0.10	0.17	0.15	0.24	3.74
12 - 14 ft	0.03	•	0.02	0.23	0.26	0.22	0.20	0.15	0.20	0.07	•	0.01	0.01	•	•	0.01	1.42
14 - 16 ft	0.02	0.01	0.01	0.03	0.17	0.05	0.06	0.06	0.01	0.01	•	•	•	•	•	•	0.44
16 - 18 ft	•	•	•	0.02	0.15	0.02	0.03	0.02	0.02	•	•	•	•	•	•	•	0.28
> 18 ft	•	•	•	0.01	0.07	0.08	0.03	•	•	•	•	•	•	•	•	•	0.20
Total	4.14	3.18	4.12	6.91	11.06	9.01	5.33	3.98	9.26	9.59	4.64	2.79	3.74	6.74	8.31	7.20	100.00

OCS-A 0538 Climatological WavePeriod Rose for December: 1979 - 2015

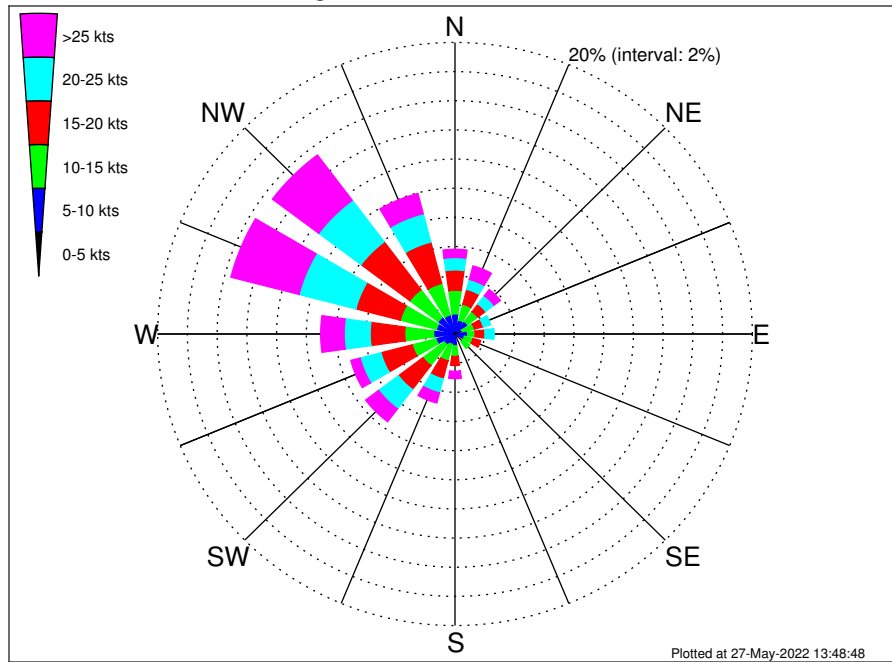


Joint Frequency Distribution Table

	N	NNE	NE	ENE	E	ESE	SE	SSE	S	SSW	SW	WSW	W	WNW	NW	NNW	Total
calm	•	•	•	•	•	•	•	•	•	•	•	•	•	•	•	•	•
1 - 2 sec	•	•	•	•	•	•	•	•	•	•	•	0.01	•	•	•	•	0.01
2 - 4 sec	0.54	0.40	0.38	0.17	0.14	0.24	0.20	0.30	0.25	0.51	1.15	1.02	1.01	1.34	1.57	1.16	10.38
4 - 6 sec	3.33	2.43	2.76	1.36	0.81	0.43	0.45	0.39	0.87	4.86	3.11	1.52	2.54	5.26	6.46	5.51	42.08
6 - 8 sec	0.28	0.33	0.97	2.37	1.54	1.06	0.79	1.38	4.57	4.12	0.38	0.23	0.18	0.15	0.29	0.53	19.17
8 - 10 sec	•	0.01	0.01	2.31	2.69	3.31	2.52	1.74	3.43	0.10	•	•	•	•	•	•	16.14
10 - 12 sec	•	•	•	0.69	4.78	3.43	1.29	0.17	0.14	•	•	•	•	•	•	•	10.50
12 - 14 sec	•	•	•	•	1.05	0.54	0.08	•	•	•	•	•	•	•	•	•	1.67
14 - 16 sec	•	•	•	•	0.05	•	•	•	•	•	•	•	•	•	•	•	0.05
18 - 20 sec	•	•	•	•	0.01	•	•	•	•	•	•	•	•	•	•	•	0.01
22 - 24 sec	•	•	•	•	•	•	•	•	•	•	•	•	•	•	•	•	•
Total	4.14	3.18	4.12	6.91	11.06	9.01	5.33	3.98	9.26	9.59	4.64	2.79	3.74	6.74	8.31	7.20	100.00



OCS-A 0538 Climatological Wind Rose for December: 1979 - 2015



Joint Frequency Distribution Table

	N	NNE	NE	ENE	E	ESE	SE	SSE	S	SSW	SW	WSW	W	WNW	NW	NNW	Total
calm	0.02	0.01	0.01	•	0.01	•	•	•	•	•	•	0.03	•	•	•	•	0.09
0 - 5 kts	0.31	0.20	0.23	0.12	0.22	0.15	0.21	0.14	0.17	0.13	0.13	0.25	0.28	0.18	0.18	0.23	3.12
5 - 10 kts	1.05	0.78	0.83	0.41	0.62	0.51	0.47	0.49	0.64	0.61	0.78	1.04	1.16	1.10	1.24	1.12	12.87
10 - 15 kts	1.62	1.12	0.84	0.82	0.51	0.60	0.55	0.49	0.73	1.16	1.80	1.65	1.94	2.51	2.38	2.23	20.95
15 - 20 kts	1.39	1.06	0.67	0.62	0.66	0.53	0.47	0.30	0.62	1.29	2.06	2.18	2.32	3.10	4.11	2.93	24.31
20 - 25 kts	0.85	0.70	0.71	0.51	0.62	0.28	0.33	0.24	0.39	0.99	1.67	1.45	1.75	3.95	3.57	2.01	20.03
25 - 30 kts	0.36	0.52	0.38	0.28	0.37	0.17	0.17	0.22	0.29	0.53	0.86	0.47	0.92	2.77	2.55	1.02	11.89
30 - 35 kts	0.17	0.22	0.13	0.07	0.06	0.17	0.10	0.14	0.12	0.15	0.17	0.14	0.41	1.62	0.98	0.26	4.91
35 - 40 kts	0.01	0.13	0.01	0.08	0.03	0.07	0.02	0.01	0.07	0.03	0.06	0.02	0.22	0.30	0.30	0.09	1.46
40 - 45 kts	0.02	0.07	0.01	•	0.01	•	0.01	•	0.03	•	•	0.01	0.02	0.03	0.06	0.02	0.31
45 - 50 kts	•	0.02	•	•	•	0.02	•	•	•	•	•	•	•	•	•	0.02	0.07
Total	5.81	4.82	3.82	2.90	3.11	2.50	2.35	2.04	3.06	4.89	7.53	7.24	9.03	15.57	15.38	9.96	100.00